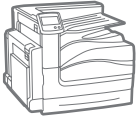


Phaser®
7800
A3
Colour
Printer



Xerox® Phaser® 7800
Colour Printer
The graphic arts
gold standard.



Xerox® Phaser® 7800 Colour Printer

Unmatched colour printing. Industry-leading media flexibility.

Professional colour management technologies. These are the benchmarks of the Phaser 7800 – the only A3-size colour printer in its class that delivers the full complement of advanced capabilities today's most graphic-intensive environments require. Now any business that produces large volumes of high-resolution output, such as advertising agencies, graphic design shops, marketing communications firms, photography studios and countless others, can keep more of their business-critical print jobs in-house thanks to the Phaser 7800 colour printer's unbeatable state-of-the-art technologies.





Print shop-quality colour, without the print shop.

If your work demands the best-possible colour print quality, the Xerox® Phaser 7800 colour printer is the obvious choice. With the winning combination of consistently superior image quality and professional-level colour-matching technologies, no other A3-size colour printer gives creative professionals the freedom to produce more customer-facing collaterals in-house.

- **True 1200 x 2400 dpi.** The Xerox® Phaser® 7800 colour printer delivers a high print resolution that consistently produces realistic images, photos and graphics, plus sharp text and fine-line detail.
- **The colours you expect, with reliable accuracy.** PANTONE® calibrated solid-colour simulations and Xerox® Colour Correction technology deliver results that always match your expectations, while true Adobe® PostScript® 3™ ensures accuracy you can count on.
- **Seeing is believing.** Impress your clients and potential customers with output that, until now, could only be achieved by outsourcing your work to a professional print shop. The Phaser 7800 produces glossy, vivid colours; rich, deep blacks; and the smoothest colour transitions – no streaking, banding or striping.
- **Advanced print head technology.** The Phaser 7800 colour printer features the Xerox® Hi-Q LED print head, which provides better dot-to-dot intensity and timing control, and produces precise colour registration.
- **Easy viewing.** Stunning colour quality means very little if your audience can't easily understand your messaging. Advanced trapping technology ensures clean edges and prevents gaps between adjacent colours. Plus, black text on coloured backgrounds and coloured text on black backgrounds always prints sharp and clear.



Media Mastery

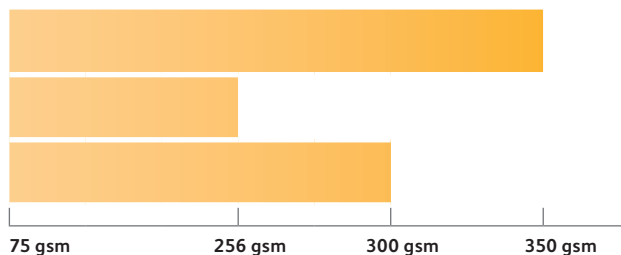
For designers, photographers, and creative professionals from every industry: Now there's virtually no limit to the types of printed materials you can create thanks to the Xerox® Phaser® 7800 colour printer's incredible media handling capabilities. From customer-ready brochures and sales proposals, to posters, banners, booklets and business cards, no other device in its class prints such amazing colour quality on the widest range of media weights and sizes. Take advantage of weights from 75 to 350 gsm, and sizes from 88 x 99 mm to 320 x 1219 mm, and let your creative inspiration take over.

Media Weight Capabilities

Single-sided printing

Automatic two-sided printing

Automatic two-sided printing with optional Extra Heavy Duty Media Kit



**350
gsm**

However you measure your paper weight, the Phaser 7800 can print on it.



Environmental Advantages

The Xerox® Phaser® 7800 colour printer includes an impressive lineup of standard features that help your office environment reduce its impact on the natural environment.

- **EA Toner.** Our EA Toner with low-melt technology achieves minimum fusing temperature at 20 degrees C less than conventional toner for even more energy savings.
- **Reduced paper consumption.** Save paper and money when you print multipage documents with automatic two-sided output.
- **Hi-Q LED print engine.** Proven Hi-Q LED print engine technology consumes minimal energy and space, and operates quietly.
- **Induction heating fuser.** The heat-efficient IH fuser consumes substantially less power in standby mode than conventional fusers and achieves a start-up time of less than 15 seconds.



The best colour printing, and beyond.

Powerful, industry-leading software solutions for colour matching, proofing and variable data printing allow you to bring additional professional-level graphic-arts and marketing capabilities in-house.

PhaserMatch® 5.0 with PhaserMeter™ Colour Measurement Device powered by X-Rite. Standard with the Phaser 7800GX configuration (optional with DN and DX configurations), PhaserMatch 5.0 colour management and calibration software brings stability to the colour control process – delivering consistent, predictable and reproducible colour matching. Plus, it comes with the PhaserMeter all-in-one Colour Measurement Device, which captures colours and helps calibrate your monitors and Phaser 7800 printer.

PhaserMatch 5.0 benefits include:

- Colour calibration for accurate, consistent results
- Control over repeatable colour – saving time and money
- Greater colour accuracy for design visuals and prepress proofs

- Fewer iterations and assurance that digital proofs meet press colour expectations

EFI™ Fiery eXpress 4.5. For graphic artists and colour professionals, generating proofs that predict your final print characteristics is an essential capability. Whether you need high-quality proofing or high-resolution photo prints, the Phaser 7800 Colour Printer and Fiery eXpress 4.5 for Xerox combine to deliver cost-effective, in-house colour proofing.

XMPie uDirect Studio LE. This integrated suite of XMPie desktop software tools – uDirect and uImage® – creates communications with more impact and relevance through advanced variable data customised images. With uDirect Studio, you can create impressive variable data-driven documents with personalised images and illustrations using XMPie uImage and Adobe Photoshop® and Illustrator®.



The peak of productivity.

Engineered for fast-paced environments with the most demanding expectations, the Xerox® Phaser® 7800 colour printer delivers clearly superior colour quality without sacrificing exceptional speed or reliability. Now any business or organisation that depends on colour – whether selling their products, winning new business, or sharing creative concepts – can produce the most impressive, customer-ready collaterals as fast as they need them.

- **Fast printing.** The Phaser 7800 helps you beat your deadlines, delivering both black and white and colour output at a speed of up to 45 ppm.
- **A true powerhouse.** With a 1.33 GHz processor, 2 GB of memory and a standard 160 GB hard drive, the Phaser 7800 is designed to handle a steady flow of high-resolution print jobs loaded with colourful images and graphics.
- **Standard duplexing.** Automatic two-sided printing comes standard, providing more flexibility and helping reduce paper consumption. Plus, the Phaser 7800 printer's duplex speed is just as fast as single-side printing, so there's no sacrificing efficiency for conservation. And with the optional Extra Heavy Duty Media Kit you can print two-sided output on standard and custom-size media in weights up to 300 gsm. No other printer in its class handles such a wide variety of heavy stock*.
- **Long-term durability.** With a duty cycle of up to 225,000 pages per month, we built the Phaser 7800 colour printer to withstand constant use and perform at its best for years to come.
- **Total peace of mind.** In the unlikely event that a problem does occur, your Phaser 7800 is covered by a one-year onsite warranty.



Emphasis on easy.

Designed to handle a wide variety of complex colour print jobs, there's nothing complex about the Xerox® Phaser® 7800 colour printer's usability.

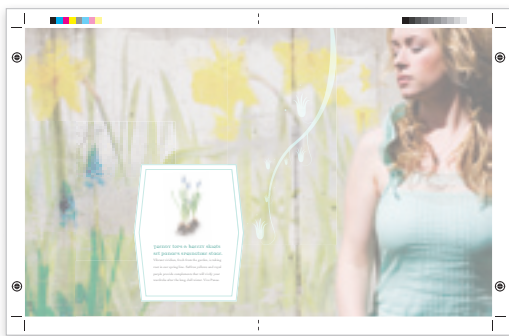
With superior printer management capabilities and innovative, helpful technologies, even those with no experience using advanced colour printers will quickly become comfortable with the wealth of useful features offered by the Xerox® Phaser® 7800.

- **Advanced touch screen interface.** The Phaser 7800 features a state-of-the-art 109 mm, colour touch-screen interface. Its big, bright icons and intuitive menus make walk-up operation faster and easier than ever.
- **Help where you need it.** The Phaser 7800 features embedded help videos for quick, easy, step-by-step troubleshooting assistance right on the colour touch screen.
- **Effortless printer management.** Xerox® CentreWare® Internet Services embedded web server helps you save valuable time by simplifying configuration cloning and automatic installation of additional Phaser 7800 colour printers. You can also view job status and troubleshoot right from your web browser.
- **Fewer interventions.** Long-life, user-replaceable items, such as the imaging unit and fuser, are easy to access and replace. Plus, they're engineered for maximum longevity so you'll stay more productive, longer.
- **Easy, front access.** The Phaser 7800 was designed for total convenience. There's no need to rotate or move the printer to perform routine maintenance like changing toner and adding paper.
- **Bi directional communication.** The Phaser 7800 sends print-job updates, along with toner and paper supply levels, to your desktop or even over the web. Pop-up alerts immediately notify you of any print problems – and how to fix them.

More finishing options, greater design flexibility.

The Xerox® Phaser® 7800 colour printer gives graphic arts professionals an impressive range of business-ready finishing options to choose from.

Depending on your needs and budget, you can go with the all-in-one Professional Finisher and get stacking, stapling, hole punching, booklet making and v-folding; or start with the Office Finisher LX and get stacking and stapling with the flexibility to add separate hole punching, creasing and stapling capabilities as your workload dictates.



Oversize Output for A3 bleed



Booklet



V-Fold



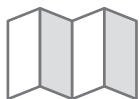
2/4-hole punch



Multiposition stapling

Xerox® Media: Unique media applications for digital colour printers.

Complementing our line of robust plain and coated paper portfolios, Xerox® specialty media products enable printers to position themselves as innovators, offering unique solutions to their customer's needs, while achieving greater profits. For more information on these and other Xerox® Specialty Media, visit us at www.xerox.com.



Xerox® AccordianPix™



Xerox® Everflat® Books



Xerox® FunFlip®



Xerox® PhotoPix



1

Professional Finisher

As the name indicates, when you add the Professional Finisher to your Phaser 7800, you'll benefit from a wealth of professional-level document finishing capabilities.

- Stacking: 1,500 sheets plus a 500-sheet top tray
- Stapling: 50-sheet, multi-position
- 2/4-hole punch
- Saddle-stitch booklet making
- V-folding, up to 15 sheets
- Sizes: 182 x 182 mm to 330.2 x 483 mm

2

Office Finisher LX

If your immediate needs don't require some of the more advanced capabilities offered by the Professional Finisher, consider adding the Office Finisher LX, which lets you add hole punching and/or creasing capabilities as your workload evolves.

- Stacking: 2,000 sheets unstapled, 1,000 sheets single-stapled or 750 sheets dual stapled
- Stapling: 50-sheet, multi-position
- Sizes: 100 x 148 mm to 330.2 x 488 mm

3

Booklet Maker for Office Finisher LX

Add booklet-making capabilities to the Office Finisher LX and create booklets with up to 15 sheets, either creased or saddle-stitched.

- Sizes: 210 x 279.4 mm to 330.2 x 457.2 mm

Xerox® Phaser® 7800 Quick Facts

Print

330 x 457 mm

45 ppm

WxDxH (DN configuration):
641 x 699 x 578 mm



Phaser 7800 with Professional Finisher

Xerox® Phaser® 7800

Colour Printer



	Xerox® Phaser® 7800DN	Phaser 7800DX	Phaser 7800GX	
Speed	Up to 45 ppm colour / 45 ppm black and white			
Duty Cycle	Up to 225,000 pages / month ¹			
Paper Handling Paper Input	Standard	Tray 1: 100 sheets; Custom sizes: 88 x 99 mm to 320 x 1219 mm		
		Tray 2: 520 sheets; Custom sizes: 140 x 182 mm to 297 x 432 mm		
		NA	High Capacity Tandem Tray: 2,520 sheets; Custom sizes: 140 x 182 mm to 330 x 457 mm	3 Tray Module: 1,560 sheets; Custom sizes: 140 x 182 mm to 330 x 457 mm
	Optional	3 Tray Module	NA	
		High Capacity Tandem Tray	NA	
	Total Standard Capacity	620 sheets	3,140 sheets	2,180 sheets
	Optional Extra Heavy Duty Media Kit: Allows automatic two-sided printing from Tray 1 on media up to 300 gsm			
Finishing Options	Standard	Dual Offset Catch Tray: 250-sheets each		
	Optional	Office Finisher LX: 2,000-sheet stacker, 50 sheets stapled, 2-position stapling, optional hole-punch		
		Booklet Maker for Office Finisher LX: Adds booklet making (crease, saddle-stitch) with up to 15 sheets		
		Professional Finisher: Stacking: 1,500-sheet stacker and 500-sheet top tray, 50-sheet multiposition stapling and hole punch, saddle-stitch booklet maker, V-Fold		
Automatic Two-sided Printing	Standard			
Print First-page-out Time	As fast as 9 seconds colour and black and white			
Resolution (max)	Enhanced: 1200 x 2400 x 1 dpi / Photo Mode: 600 x 600 x 8 dpi / Standard: 1200 x 600 x 1 dpi			
Processor	1.33 GHz			
Memory / Hard Drive	2 GB / 160 GB			
Connectivity	Ethernet 10/100/1000Base-T, USB 2.0, Optional external wireless 802.11 b, g, n			
Page Description Languages	Adobe® PostScript® 3™, PCL® 6/5c, Adobe PDF-Direct version 1.6			
Print Features	Print Around, Colour By Words, PDF Direct, Smart Duplex, Run Black, Secure and Personal Print, Booklet Printing, Smart Trays, Sample Set, Personal Saved Print, Custom size pages, Collation, Banner-size printing, Watermarks, PhaserSMART®, Print submission tools, Extended Font Storage, Scaling, Separation Pages, N-up, Internet Printing Protocol (IPP), Job Pipelining, Bi-directional driver, Layout/watermark, Form/Font Storage			
Accounting	Job Accounting, Usage Analysis Tool, Automatic Meter Read, Automatic Supplies Replenishment			
Security	Secure HTTPS (SSL), IPsec, 802.1X authentication, IPv6, SNMPv3, Image overwrite, Configurable disk overwrite, Port control, IP filtering			
Software Solutions	Standard	Xerox® PhaserCal®		
	Optional		Xerox® PhaserMatch 5.0 with Xerox® PhaserMeter® Colour Management Device powered by X-Rite	
Warranty	One-year on-site warranty			

¹ Maximum volume capacity expected in any one month. Not expected to be sustained on a regular basis.

Xerox® Phaser® 7800

Colour Printer

Device Management

CentreWare® Internet Services, CentreWare Web, Email alerts, Cloning, PhaserSMART®, Job Accounting, Usage Analysis, Print Submission Tools, Job Tracker, WebJet Admin Interface, Tivoli, Apple® Bonjour

Print Drivers

Windows® XP/Server 2003/2008/Vista, Mac OS® 10.5 and higher, Oracle® Solaris 9, 10, Red Hat® Enterprise Linux® 4, 5, Fedora Core 11-13, SUSE 11.x, IBM® AIX 5, HP-UX® 11.0/11i, Novell NetWare 5.x, 6.x Open Enterprise Server, Xerox Global Print Driver®, Xerox Mobile Express Driver®

Font Capability

139 PostScript® fonts; 93 PCL® fonts

Colour Standards

PANTONE® calibrated solid-colour simulations, Adobe® PostScript® device-independent colour, CIE International colour standards, and support for ICC, ICM and Apple ColorSync colour management systems, PhaserMatch® 5.0, PhaserCal®

Media Handling

Tray 1: 75–350 gsm; Automatic 2-sided printing: 75–256 gsm
Automatic 2-sided printing with Extra Heavy Duty Media Kit (optional): 75–300 gsm
Trays 2-5 and finishers: 75–256 gsm
Lightweight to extra heavyweight card stock (coated and uncoated), plain, preprinted, prepunched, letterhead, envelopes, transparencies, recycled, custom

Operating Environment

Temperature: Operating: 10° to 32° C
Relative Humidity (noncondensing): Operating: 15% to 85%
Sound pressure levels: Printing: 52 dB(A), Standby: 21 dB(A)
Sound power levels: Printing: 6.81 B(A), Standby: 3.80 B(A)

Electrical

230V: 50/60Hz: Printing (avg): 760 W
Ready: 86 W
Power Saver: 56 W
Sleep: 6.3 W

Unpackaged Dimensions (WxDxH)

7800DN: 641 x 699 x 578 mm, Weight: 81 kg
7800GX: 641 x 699 x 953 mm, Weight: 116 kg
7800DX: 641 x 699 x 953 mm, Weight: 125 kg
Office Finisher LX: 1,012 x 552 x 942 mm, Weight: 28 kg
Office Finisher LX with Booklet Maker: 1,012 x 597 x 1057 mm, Weight: 37.2 kg
Professional Finisher: 885 x 650 x 1,010 mm, Weight: 90.7 kg

Certifications

Certified to UL 60950-1/CSA 60950-1-07, 2nd Edition
FCC Part 15, Class A
Low Voltage Directive 2006/95/EC; EN 60950-1, 2nd Edition
EMC Directive 2004/108/EC
EN 55022, Class A
EN 55024
RoHS Directive 2002/95/EC
Section 508 Compliant
ENERGY STAR® Qualified

Supplies

Standard-capacity Toner Cartridges:
Cyan: 6,000 pages¹ 106R01624
Magenta: 6,000 pages¹ 106R01626
Yellow: 6,000 pages¹ 106R01625
High-capacity Toner Cartridges:
Black: 24,000 pages¹ 106R01573
Cyan: 17,200 pages¹ 106R01570
Magenta: 17,200 pages¹ 106R01571
Yellow: 17,200 pages¹ 106R01572
Staple Refills for Office Finisher LX 008R12941
Staple Refills for Professional Finisher 008R12897

Routine Maintenance Items

Imaging Unit: Up to 145,000 pages² 106R01582
Waste Cartridge: Up to 20,000 pages² 108R00982
Suction Filter: Up to 120,000 pages² 108R01037
IBT Cleaner: Up to 160,000 pages² 108R01036

Options

Office Finisher LX 097S04166
Booklet Maker for Office Finisher LX 497K03850
2/4-hole Punch for Office Finisher LX 497K03870
Professional Finisher 097S04168
3 Tray Module 097S04159
Cabinet Stand 097S04245
High Capacity Tandem Tray 097S04160
Extra Heavy Duty Media Kit 097S04341
PhaserMatch 5.0
(includes Phasermeter® powered by X-Rite) 097S04276
XMPie uDirect Studio LE (Phaser 7800)³
Fiery eXpress, Xerox v4.5 301N68860
Wireless Network Adapter
– European power converter 097S03741
– UK power converter 097S03742

¹ Average standard pages. Declared Yield in accordance with ISO/IEC 19798. Yield will vary based on image, area coverage and print mode.

² Average standard pages. Yield will vary depending on job run length, media size and orientation.

³ Available only with Phaser 7800V_D. Please contact your local Xerox sales representative.

Xerox® Phaser® 7800

Colour Printer



For more information, visit us at www.xerox.com/office.

©2013 Xerox Corporation. All rights reserved. Contents of this publication may not be reproduced in any form without permission of Xerox Corporation. Xerox®, Xerox and Design®, CentreWare®, Global Print Driver®, Mobile Express Driver®, Phaser®, PhaserCal®, PhaserMatch® and PhaserMeter® are trademarks of Xerox Corporation in the United States and/or other countries. As an ENERGY STAR® partner, Xerox Corporation has determined that this product meets the ENERGY STAR guidelines for energy efficiency. ENERGY STAR and the ENERGY STAR mark are registered U.S. marks. The information in this brochure is subject to change without notice. Updated 6/13 BR395 78XBR-011D

