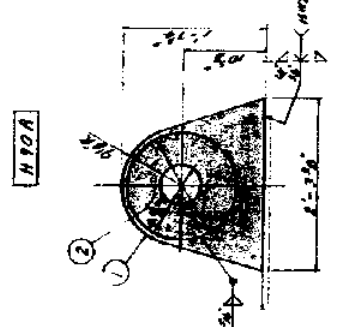
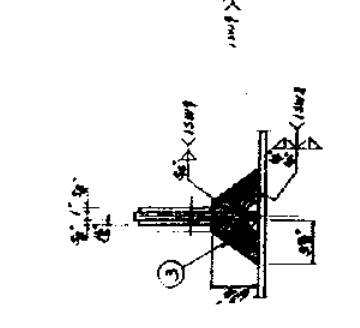
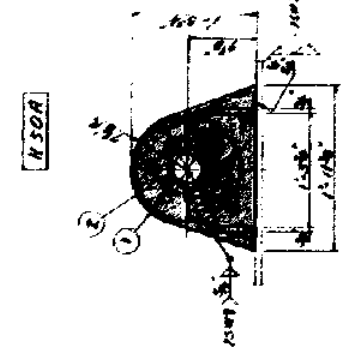


DETAILS OF PADEYES FOR BOX GIRDER (No. 1)
(Scale: 1/2" = 1'-0")

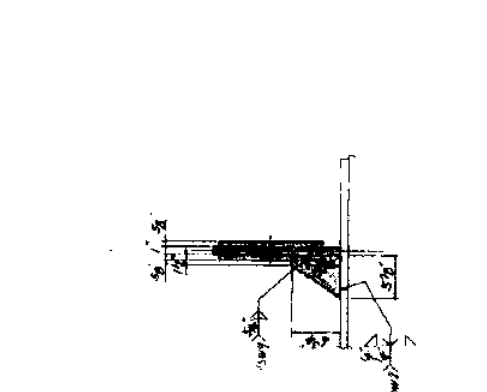
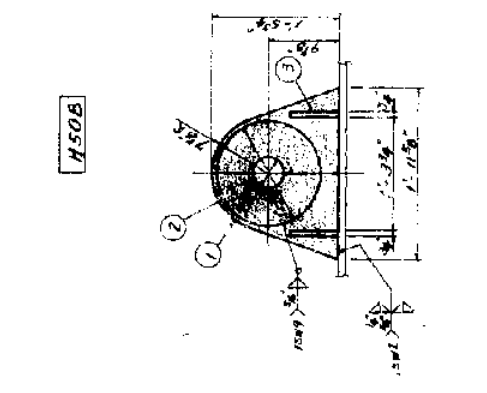
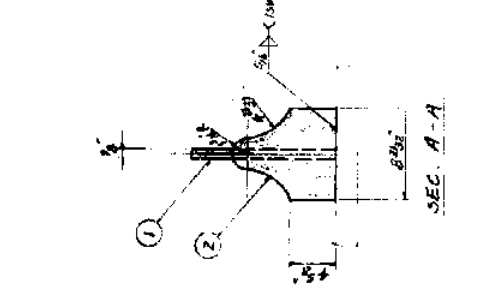
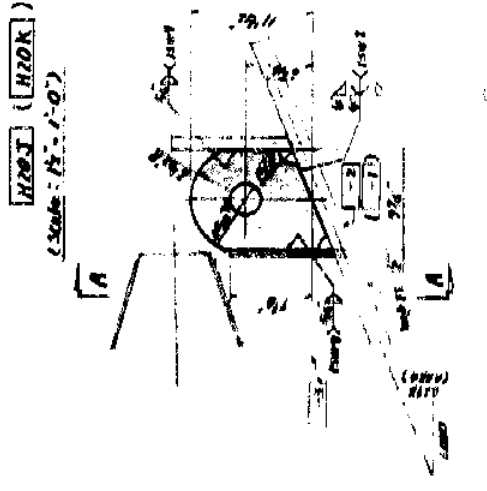
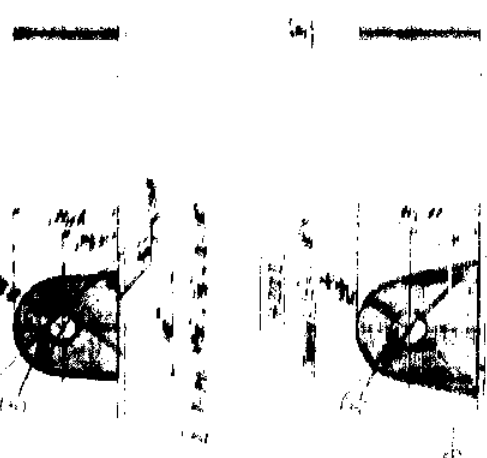


- ① 1-Pl. 15 1/2" x 15" x 1/2"
- ② 2-Pls. 10 1/2" x 10" x 1/2"
- ③ 2-Pls. 10" x 10" x 1/2"

- ① 1-Pl. 17 1/2" x 17" x 1/2"
- ② 2-Pls. 14 1/2" x 14" x 1/2"
- ③ 4-Pls. 5 1/2" x 5" x 1/2"

- ① 1-Pl. 19 1/2" x 14" x 1/2"
- ② 2-Pls. 15 1/2" x 15"

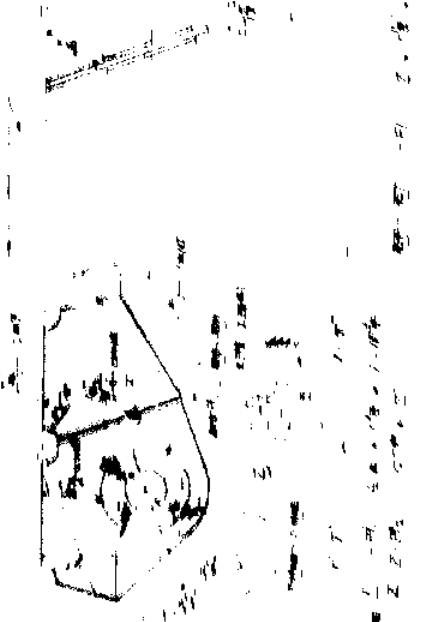
H20K (H20K)
(Scale: 1/2" = 1'-0")



- ① 1-Pl. 9 1/2" x 15" x 1/2"
- ② 1-Pl. 8 1/2" x 12" x 1/2"

- ① 1-Pl. 17 1/2" x 17" x 1/2"
- ② 2-Pls. 14 1/2" x 14" x 1/2"
- ③ 2-Pls. 5 1/2" x 5" x 1/2"

NOTES:
1. All material are A577 A588.
2. In details of reinforcement and rebaring for padeyes, see Div. No. 5-364, 5-365 & 5-366.

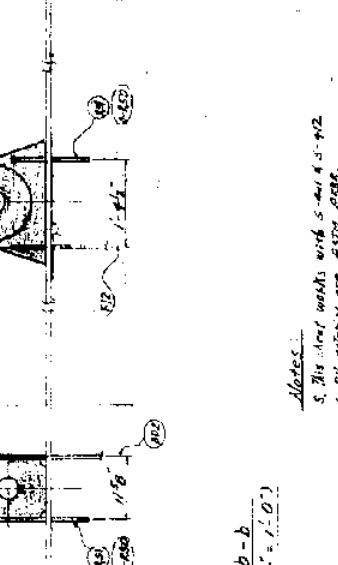
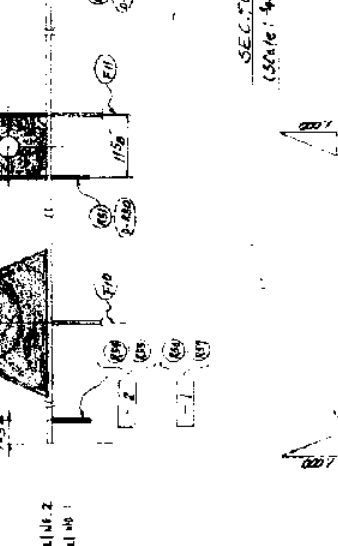
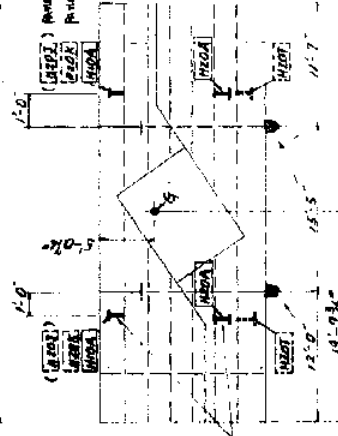
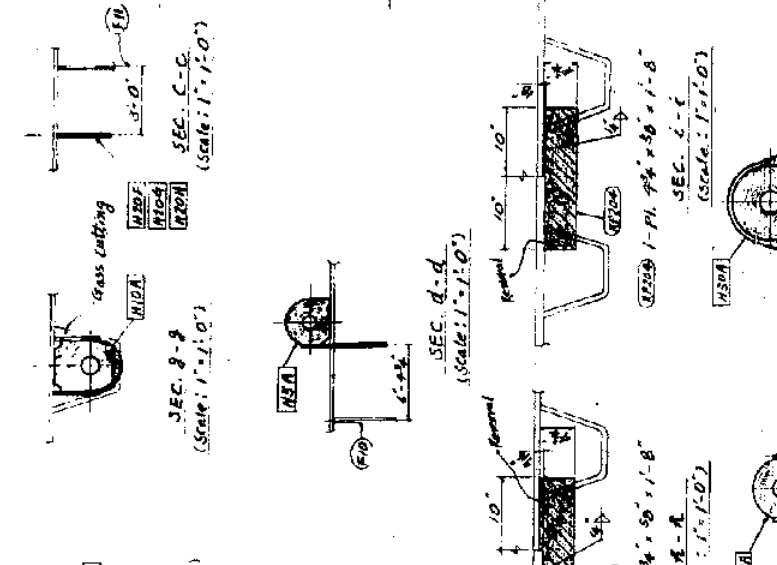
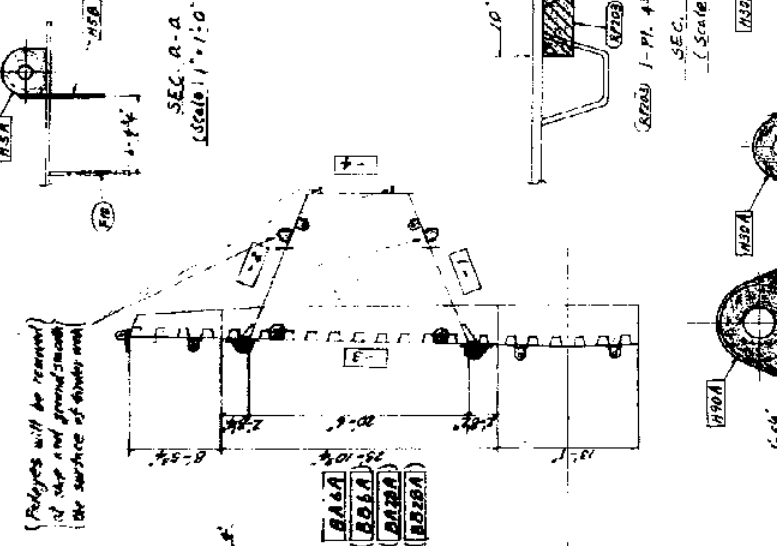
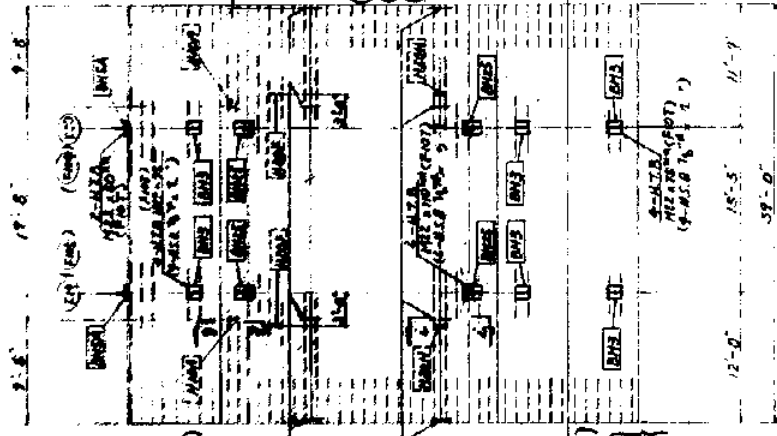


TITLE	DETAILS OF PADEYES FOR BOX GIRDER (No. 1)
STATE OF LOUISIANA	DEPARTMENT OF TRANSPORTATION AND DEVELOPMENT
OFFICE OF HIGHWAYS	STATE PROJECT NO. 450-37-07
MISSISSIPPI RIVER BRIDGE (CULVERT)	CONTRACT NO. 1-310-4195122
MAIN PLY CRUSSING SUBSTRUCTURE	DESIGNED BY GROUP PRODUCTION DESIGN UNIT
DESIGNED BY	GROUP PRODUCTION DESIGN UNIT
CHECKED BY	GROUP PRODUCTION DESIGN UNIT
SCALE	1/2" = 1'-0"
DATE	1-1-64
DRAWN BY	P. J. ...

RADEYES AND REINFORCEMENT FOR BOX GIRDER
(BLOCK No. 4, 6, 28 AND 30)

(Scale: 1/8" = 1'-0")

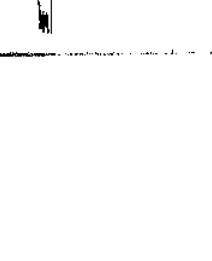
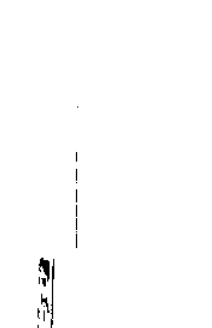
NOTE: Length of ASD in parentheses shows for filling box.



Notes:
1. All steel works with 5-1/2" x 5-1/2"
2. All details of polyages and reinforcement unless otherwise
shown, see Fig. 4, 5, 6, 7 and 8-343.
3. All polyages and reinforcement unless otherwise
shown, see Fig. 4, 5, 6, 7 and 8-343.
4. Details on this sheet will be approved, and the AREA
DESIGN GROUPS ARE ADVISED BY THE CONTRACTOR TO
CONSTITUTE THAT NO PLANS BEHIND ON THE SHEET.

LIST OF BLOCK WEIGHTS

WEIGHT	UNIT
1-PI. 5'6" x 12" x 1'-24"	1.00
2-PI. 5'6" x 12" x 1'-24"	2.00
3-PI. 5'6" x 12" x 1'-24"	3.00
4-PI. 5'6" x 12" x 1'-24"	4.00
5-PI. 5'6" x 12" x 1'-24"	5.00
6-PI. 5'6" x 12" x 1'-24"	6.00
7-PI. 5'6" x 12" x 1'-24"	7.00
8-PI. 5'6" x 12" x 1'-24"	8.00
9-PI. 5'6" x 12" x 1'-24"	9.00
10-PI. 5'6" x 12" x 1'-24"	10.00
11-PI. 5'6" x 12" x 1'-24"	11.00
12-PI. 5'6" x 12" x 1'-24"	12.00
13-PI. 5'6" x 12" x 1'-24"	13.00
14-PI. 5'6" x 12" x 1'-24"	14.00
15-PI. 5'6" x 12" x 1'-24"	15.00
16-PI. 5'6" x 12" x 1'-24"	16.00
17-PI. 5'6" x 12" x 1'-24"	17.00
18-PI. 5'6" x 12" x 1'-24"	18.00
19-PI. 5'6" x 12" x 1'-24"	19.00
20-PI. 5'6" x 12" x 1'-24"	20.00
21-PI. 5'6" x 12" x 1'-24"	21.00
22-PI. 5'6" x 12" x 1'-24"	22.00
23-PI. 5'6" x 12" x 1'-24"	23.00
24-PI. 5'6" x 12" x 1'-24"	24.00
25-PI. 5'6" x 12" x 1'-24"	25.00
26-PI. 5'6" x 12" x 1'-24"	26.00
27-PI. 5'6" x 12" x 1'-24"	27.00
28-PI. 5'6" x 12" x 1'-24"	28.00
29-PI. 5'6" x 12" x 1'-24"	29.00
30-PI. 5'6" x 12" x 1'-24"	30.00



PROVIDES AND REINFORCEMENT FOR
BOX GIRDER (BLOCK No. 4, 6, 28 AND 30)
STATE OF LOUISIANA
DEPARTMENT OF TRANSPORTATION AND REVENUE
OFFICE AT HOUMA
HOUMA, LOUISIANA 70303
DATE: 11/15/54
DRAWN BY: J. H. BROWN
CHECKED BY: J. H. BROWN
APPROVED BY: J. H. BROWN

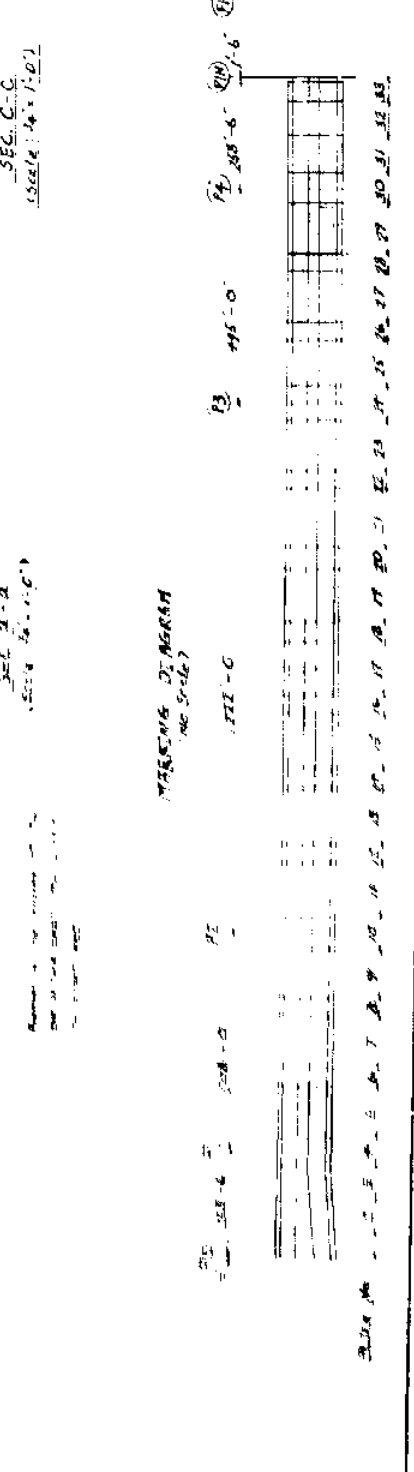
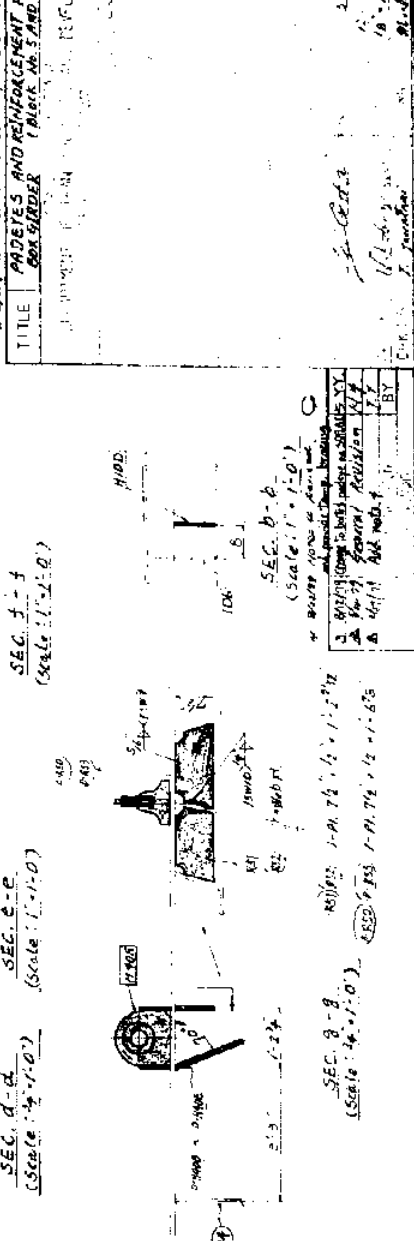
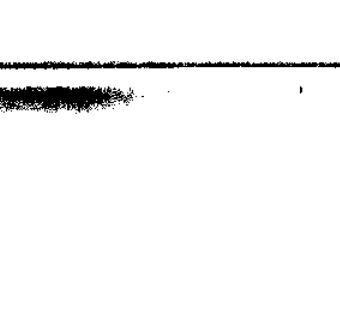
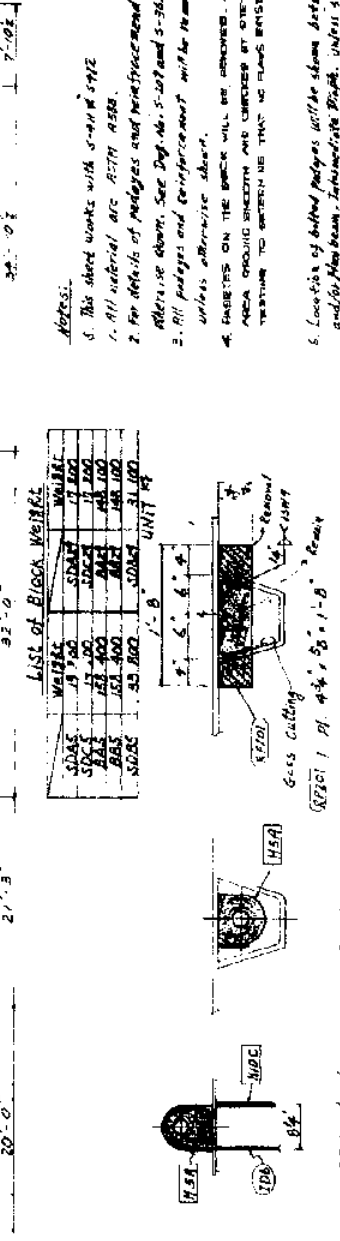
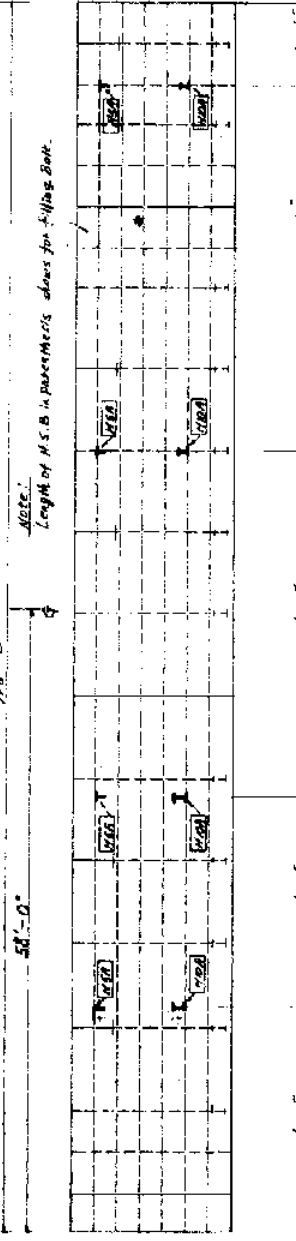
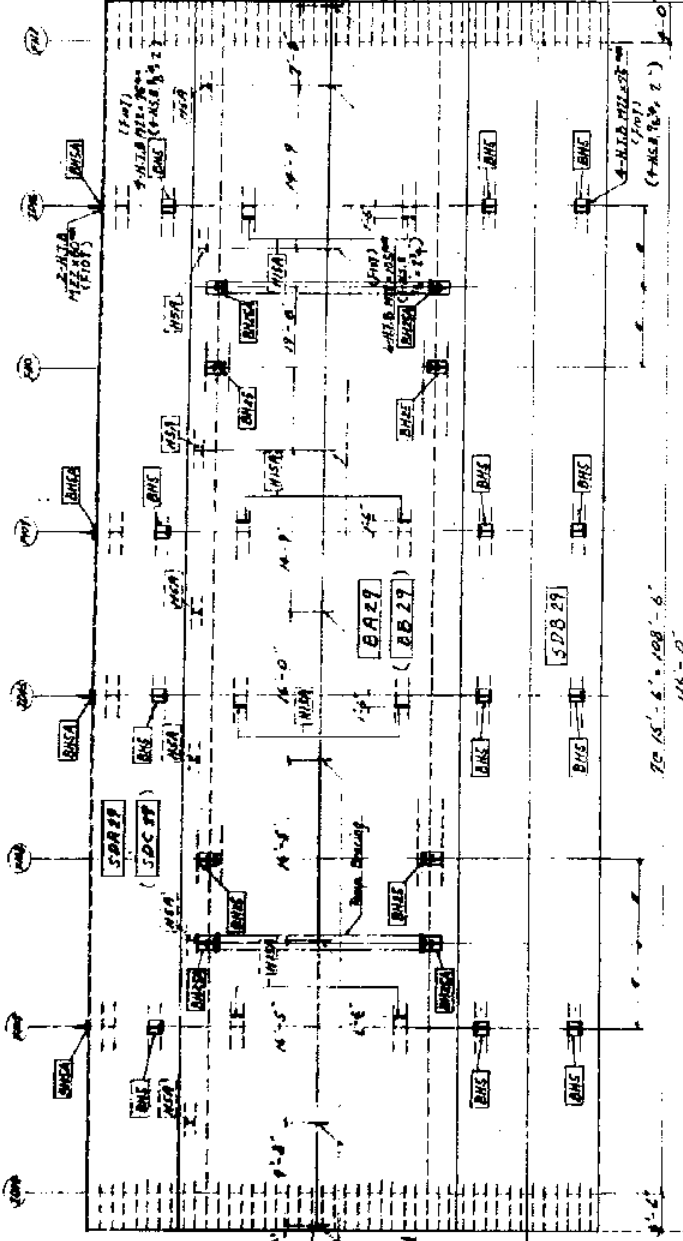
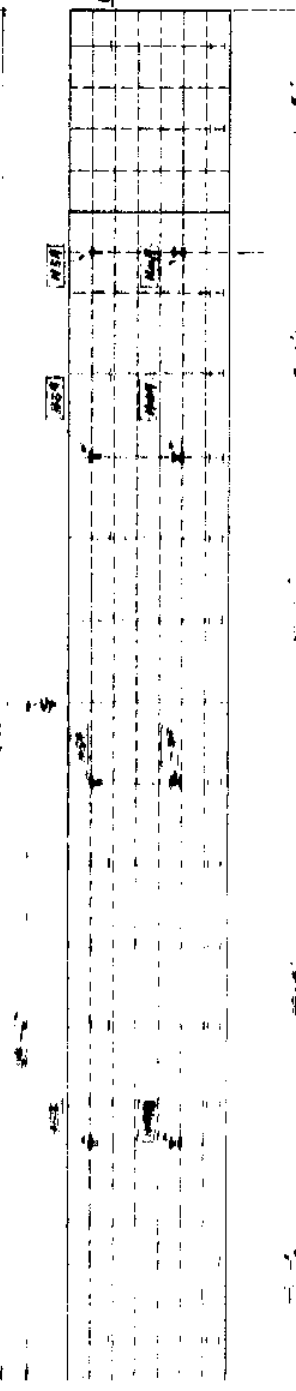
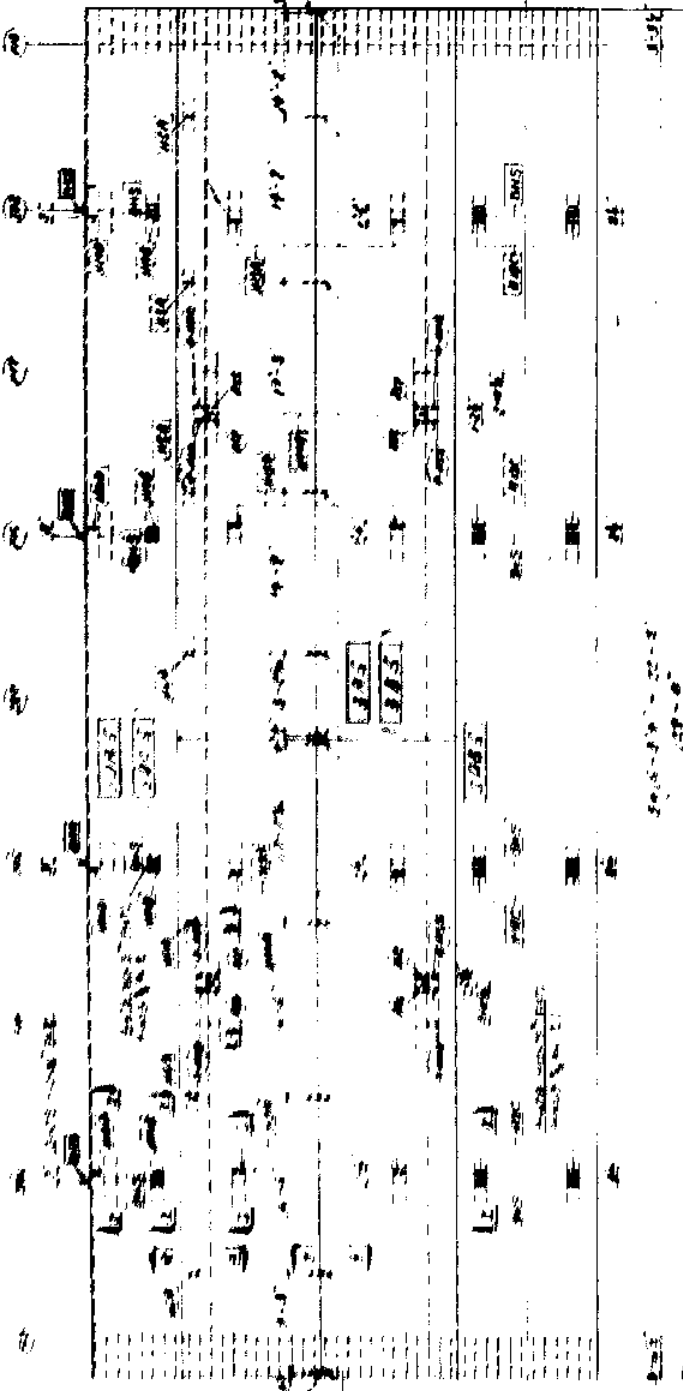
PROVIDES AND REINFORCEMENT FOR
BOX GIRDER (BLOCK No. 4, 6, 28 AND 30)
STATE OF LOUISIANA
DEPARTMENT OF TRANSPORTATION AND REVENUE
OFFICE AT HOUMA
HOUMA, LOUISIANA 70303
DATE: 11/15/54
DRAWN BY: J. H. BROWN
CHECKED BY: J. H. BROWN
APPROVED BY: J. H. BROWN

PROVIDES AND REINFORCEMENT FOR
BOX GIRDER (BLOCK No. 4, 6, 28 AND 30)
STATE OF LOUISIANA
DEPARTMENT OF TRANSPORTATION AND REVENUE
OFFICE AT HOUMA
HOUMA, LOUISIANA 70303
DATE: 11/15/54
DRAWN BY: J. H. BROWN
CHECKED BY: J. H. BROWN
APPROVED BY: J. H. BROWN

PROVIDES AND REINFORCEMENT FOR
BOX GIRDER (BLOCK No. 4, 6, 28 AND 30)
STATE OF LOUISIANA
DEPARTMENT OF TRANSPORTATION AND REVENUE
OFFICE AT HOUMA
HOUMA, LOUISIANA 70303
DATE: 11/15/54
DRAWN BY: J. H. BROWN
CHECKED BY: J. H. BROWN
APPROVED BY: J. H. BROWN

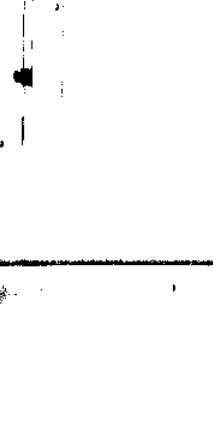
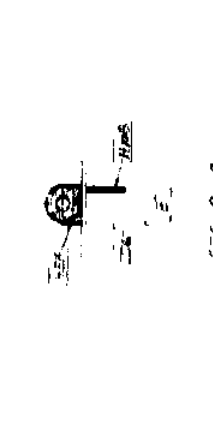
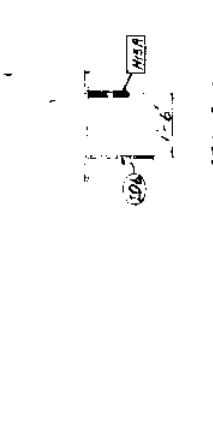
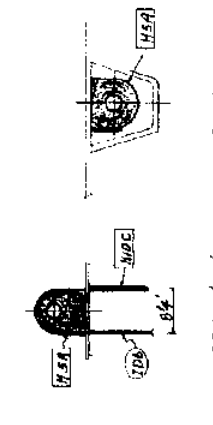
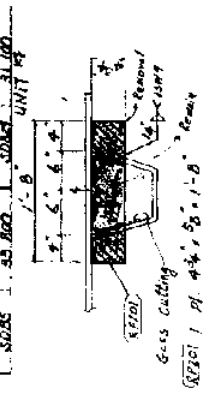
PROVIDES AND REINFORCEMENT FOR
BOX GIRDER (BLOCK No. 4, 6, 28 AND 30)
STATE OF LOUISIANA
DEPARTMENT OF TRANSPORTATION AND REVENUE
OFFICE AT HOUMA
HOUMA, LOUISIANA 70303
DATE: 11/15/54
DRAWN BY: J. H. BROWN
CHECKED BY: J. H. BROWN
APPROVED BY: J. H. BROWN

PADEYES AND REINFORCEMENT FOR BOX GIRDER (BLOCK NO. 5 AND 29) (Scale: 1/8"=1'-0")



LIST OF BLOCK REINFORCEMENT

BAR NO.	BAR SIZE	UNIT	REMARKS
STAR 29	1/2"	100	
STAR 27	1/2"	100	
STAR 28	1/2"	100	
STAR 25	1/2"	100	
STAR 26	1/2"	100	
STAR 24	1/2"	100	
STAR 23	1/2"	100	
STAR 22	1/2"	100	
STAR 21	1/2"	100	
STAR 20	1/2"	100	
STAR 19	1/2"	100	
STAR 18	1/2"	100	
STAR 17	1/2"	100	
STAR 16	1/2"	100	
STAR 15	1/2"	100	
STAR 14	1/2"	100	
STAR 13	1/2"	100	
STAR 12	1/2"	100	
STAR 11	1/2"	100	
STAR 10	1/2"	100	
STAR 9	1/2"	100	
STAR 8	1/2"	100	
STAR 7	1/2"	100	
STAR 6	1/2"	100	
STAR 5	1/2"	100	
STAR 4	1/2"	100	
STAR 3	1/2"	100	
STAR 2	1/2"	100	
STAR 1	1/2"	100	
STAR 0	1/2"	100	



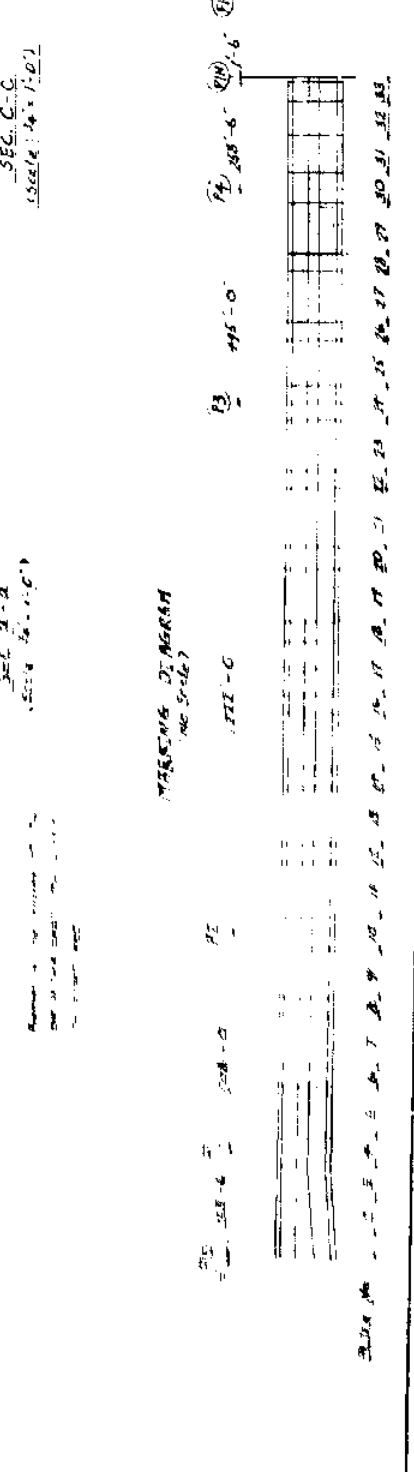
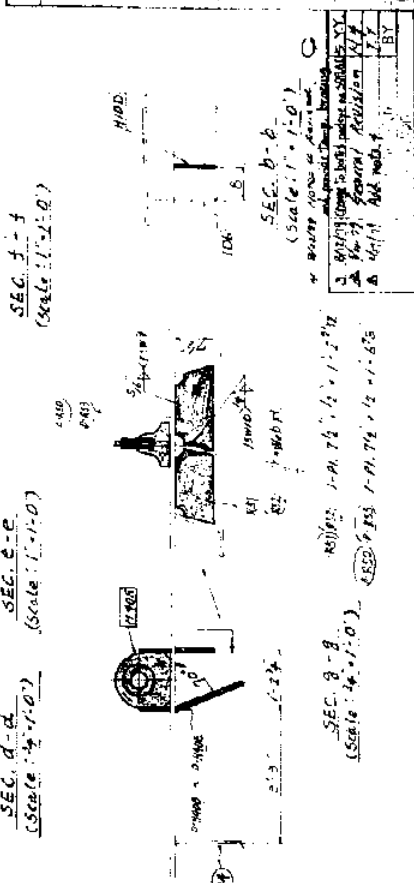
Notes:

- The sheet works with S-401 1992
- All material are ASTM A572
- For details of padeyes and reinforcement refer to the drawings. See Fig. No. S-20 and S-21.
- All padeyes and reinforcement will be furnished unless otherwise shown.
- REINFORCEMENT ON THE BACK WILL BE SHOWN AND THE AREA PROTECTIVE SHEET AND CHECKS BY THE CONTRACTOR WILL BE THE RESPONSIBILITY OF THE CONTRACTOR.
- Location of bolted padeyes will be shown between blocks and for the beam, intermediate blocks, unless shown otherwise.

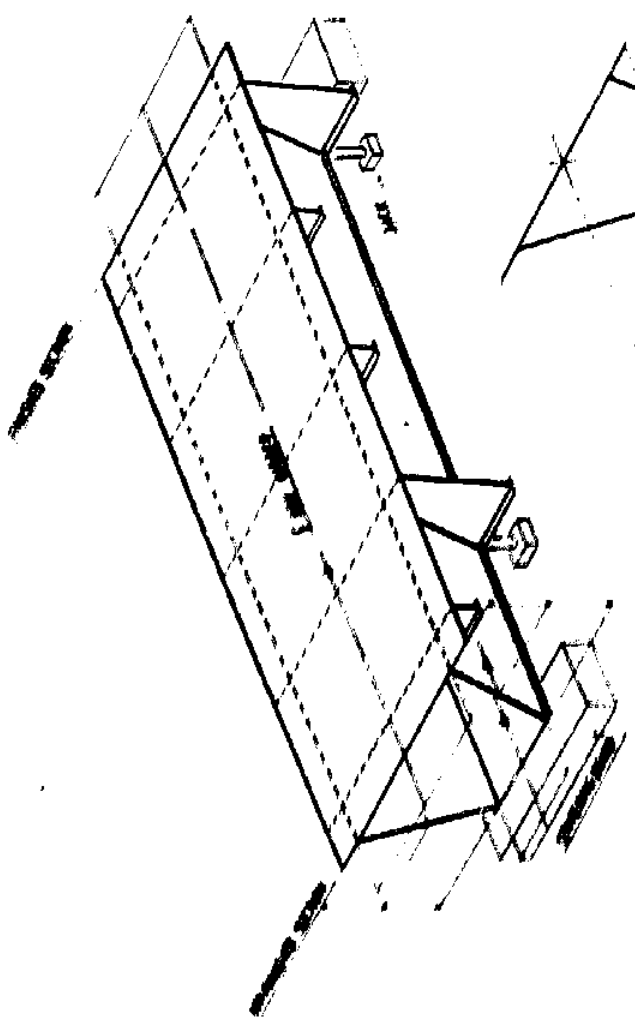
TITLE: PADEYES AND REINFORCEMENT FOR BOX GIRDER (BLOCK NO. 5 AND 29)

DATE: 1/1/74

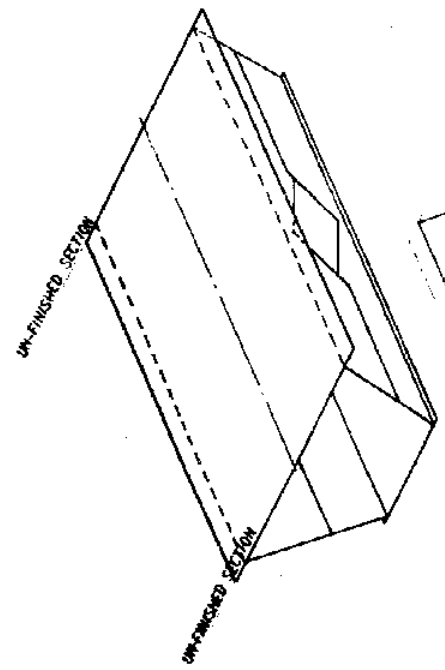
BY: J. J. J.



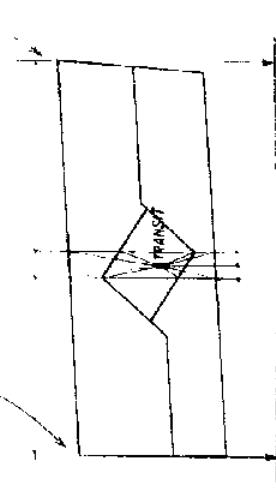
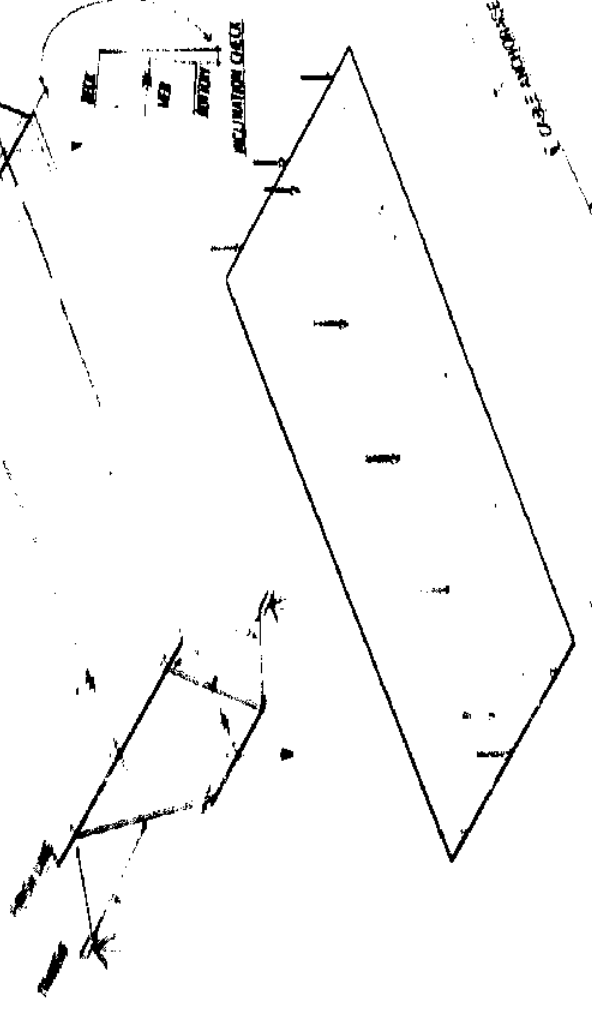
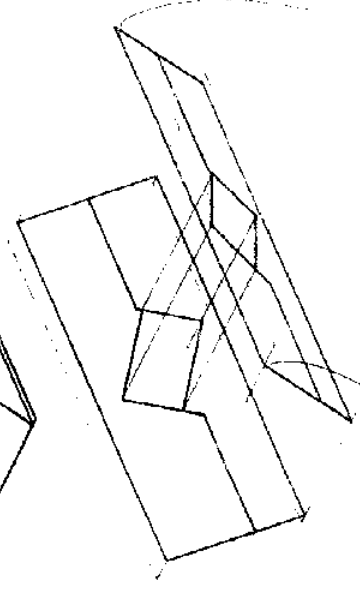
TYP. INSPECTION SEQUENCE FOR SHOP ASSEMBLY (BOX GIRDER)



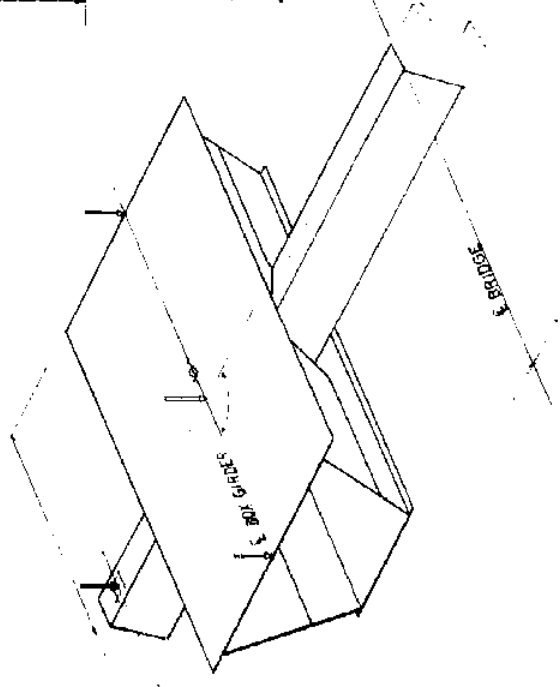
1. MARK & BOX GIRDER ON DECK PLATE.
2. PLACE BOX ON CENTERING BOARD, SO AS TO BRING EACH END SURFACE OF BOTTOM FLANGE AT UN-FINISHED END SECTION TO A LEVEL, ADJUSTED BY LEVELING JACK.
3. ADJUST BOX ON CENTERING BOARD, SO AS TO BRING UN-FINISHED END SECTION TO A VERTICAL.
4. CHECK INCLINATION AT FINISHED END SECTION.
5. MEASURE LENGTH OF BOX GIRDER.
6. MARK END FINISH LINE AT UN-FINISHED SECTION.
7. CHECK STRAIGHTNESS & TORSION OF BOX BY STRING.
8. CHECK EACH ELEVATION ON DECK PLATE AT REQUIRED POINT BY LEVELING EQUIPMENT. (CAMBER CHECK)



- SAME SEQUENCE AS STANDARD BOX GIRDER EXCEPT FOLLOWING:
1. CHECK LOCATION OF WEB OPEN, MEASURED DIMENSION FROM VERTICAL END SECTION
 2. CHECK DISTANCE BETWEEN WEB & WEB AT OPEN.
 3. CHECK ELEVATION OF WEB OPEN AT THROUGH CROSS GIRDER
 4. CHECK SQUARENESS OF WEB OPEN



1. CROSS GIRDER BE COMBINED WITH BOX GIRDER AT SHOP ASSEMBLY
2. CHECK RELATED ANGLE BETWEEN E BOX GIRDER & E CROSS GIRDER.
3. CHECK FITNESS OF JOINT BETWEEN BOX GIRDER & CROSS GIRDER
4. CHECK ELEVATION AT REQUIRED POINT



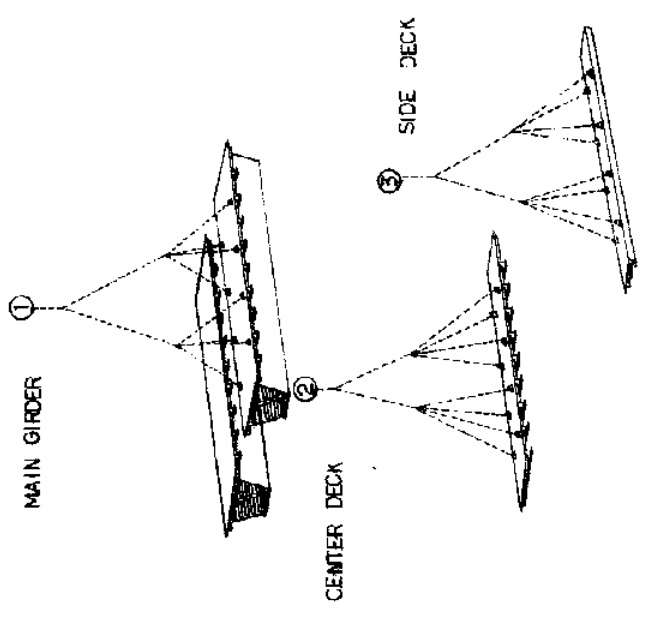
TITLE	TYP	INSPECTION SEQUENCE FOR SHOP ASSEMBLY
DEPARTMENT	0	DESIGN, FABRICATION AND ERECTION
DATE	1957	1-1-57
BY		
CHECKED BY		
APPROVED BY		
DATE		
GENERAL ENGINEERING GROUP		
S-967		
S-967		
S-967		

367

TYP SHOP ASSEMBLY SEQUENCE FOR BOX GIRDER (1/2)



NO.1 SHOP ASS.

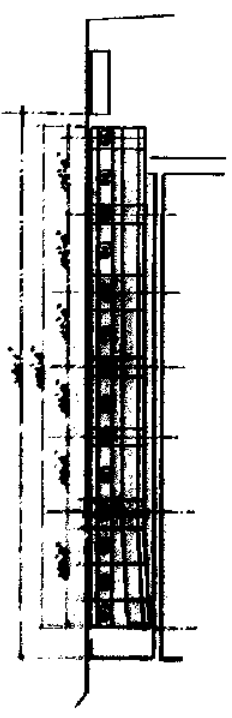


MAIN GIRDER

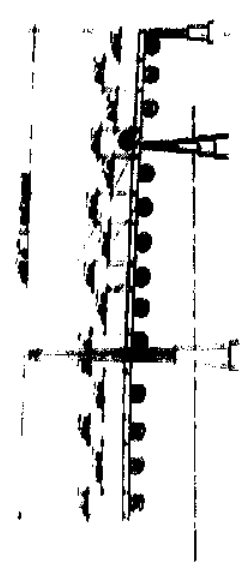
CENTER DECK

SIDE DECK

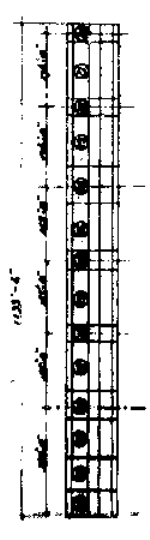
SHOP ASS. SEQUENCE



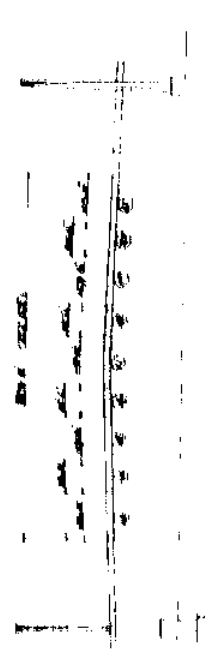
NO.1 SHOP ASSEMBLY AREA PLAN



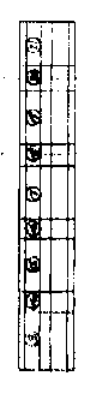
NO.2 SHOP ASS.



NO.2 SHOP ASSEMBLY AREA PLAN



NO.3 SHOP ASS.



NO.3 SHOP ASSEMBLY AREA PLAN

NOTES

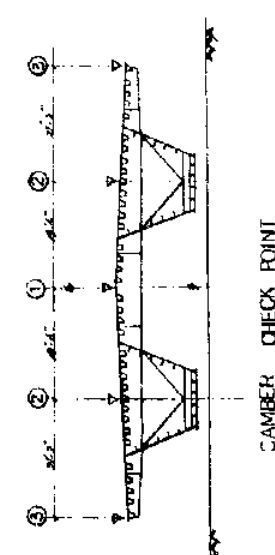
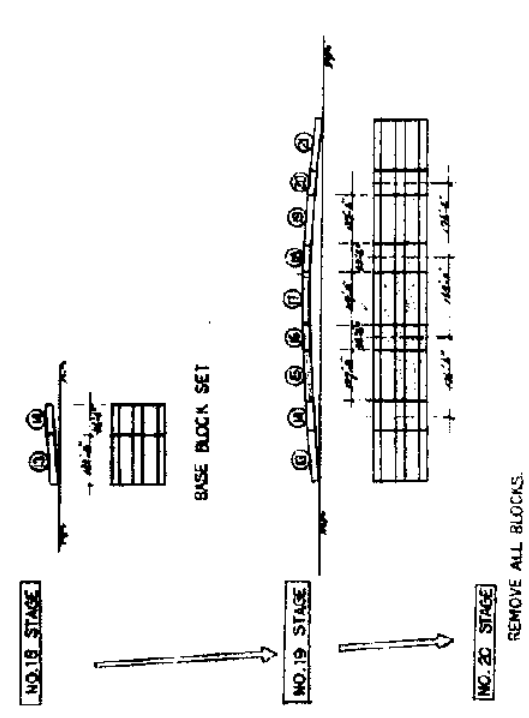
- SHOP ASSEMBLY AREA IS 1181.1 FEET LONG AND 108.1 FEET WIDE.
- SHOP ASSEMBLY OF BOX GIRDER WILL BE DONE IN THREE (3) SEQUENCE AS FOLLOWS:
NO.1 BLOCK NO.1 THRU NO.14
NO.2 BLOCK NO.15 THRU NO.20
NO.3 BLOCK NO.13 THRU NO.21
- FOR DETAIL SEQUENCE OF SHOP ASSEMBLY, SEE DWG. "TYP. SHOP ASSEMBLY SEQUENCE FOR BOX GIRDER (2)".

TITLE	TYP SHOP ASSEMBLY SEQUENCE FOR BOX GIRDER (2)
DEPARTMENT	CIVIL ENGINEERING DEPARTMENT
PROJECT	MISSISSIPPI RIVER BRIDGE
DATE	7-5-77
DESIGNED BY	J. H. HARRIS
CHECKED BY	J. H. HARRIS
APPROVED BY	J. H. HARRIS
SCALE	AS SHOWN
GENERAL ENGINEERING GROUP	S-366

368

TYP SHOP ASSEMBLY SEQUENCE FOR BOX GIRDER (2)

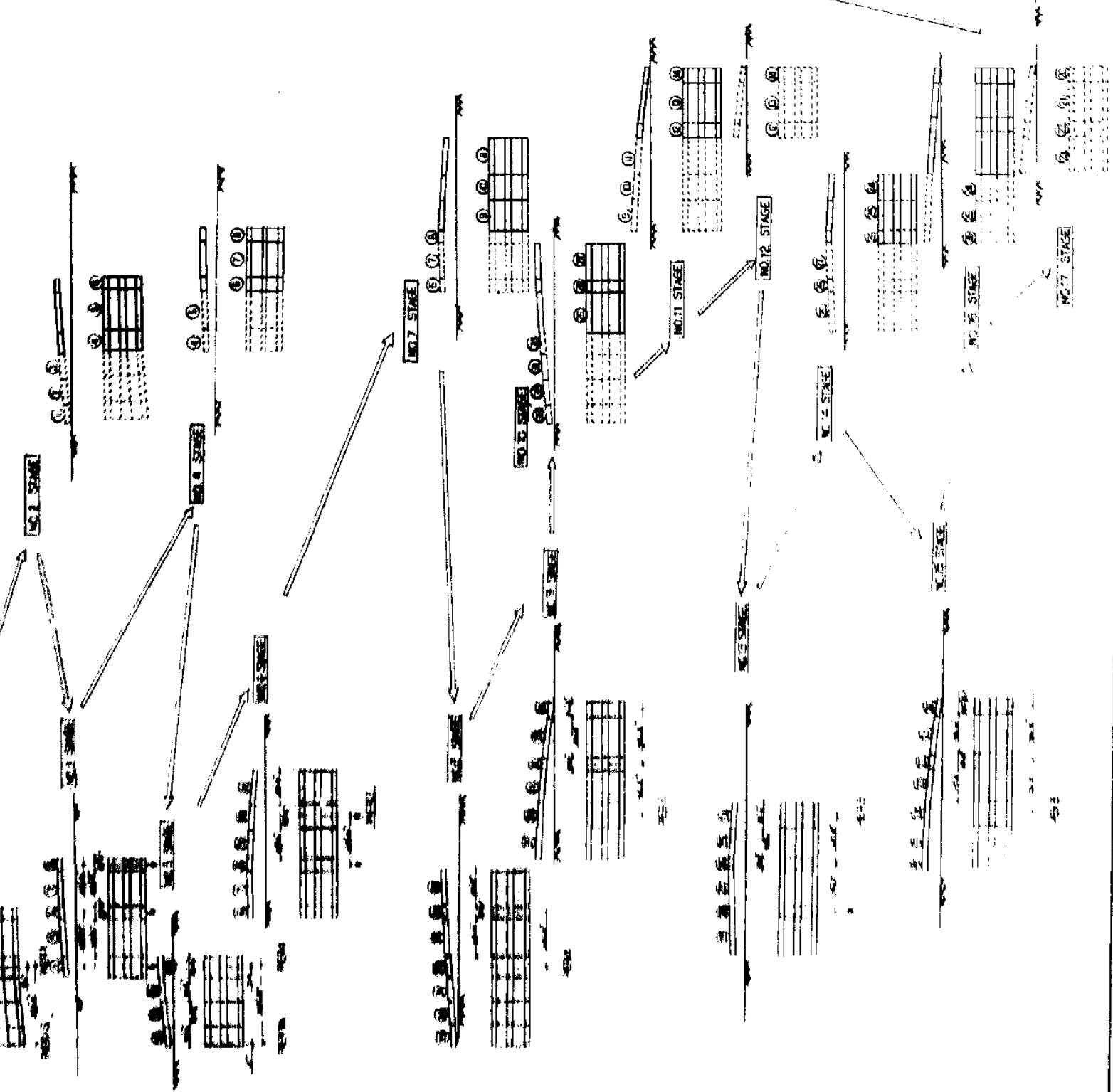
NO. 3 SHOP ASSEMBLY SEQUENCE



- NOTES**
1. AT LEAST THREE (3) BLOCKS SHALL BE CONTINUED AT EVERY STAGE OF SHOP ASSEMBLY (BOX GIRDER) EXCEPT AT ABOVE NO. 18 STAGE.
 2. THIS ASSEMBLY SHALL INCLUDE CROSS GIRDER, FLOOR BEAM, FULL DEPTH DIAPHRAGM AND CROSS FRAMES. PAIRING PL. & BARRIER MAY NOT BE INCLUDED.
 3. DIMENSIONS ON THIS SHEET, SHOW FOR REFERENCE. DIMENSIONS AT SHOP ASSEMBLY, SHALL BE CHECKED ACCORDING TO SHOP DWG "SHOP ASSEMBLY DIAGRAM FOR BOX GIRDER".

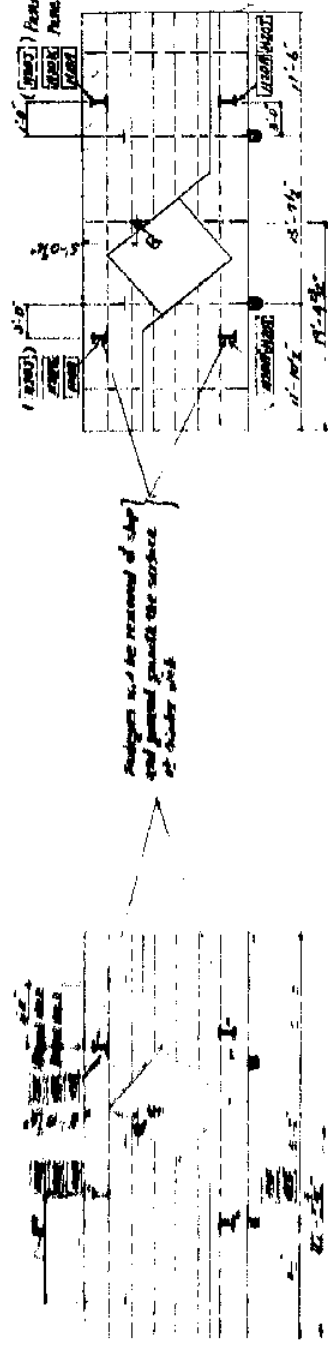
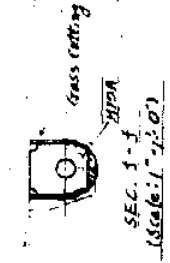
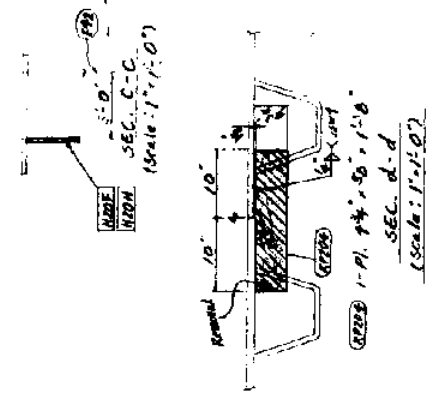
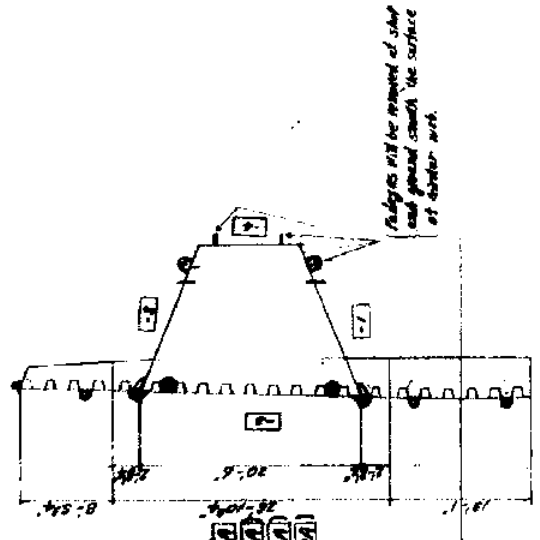
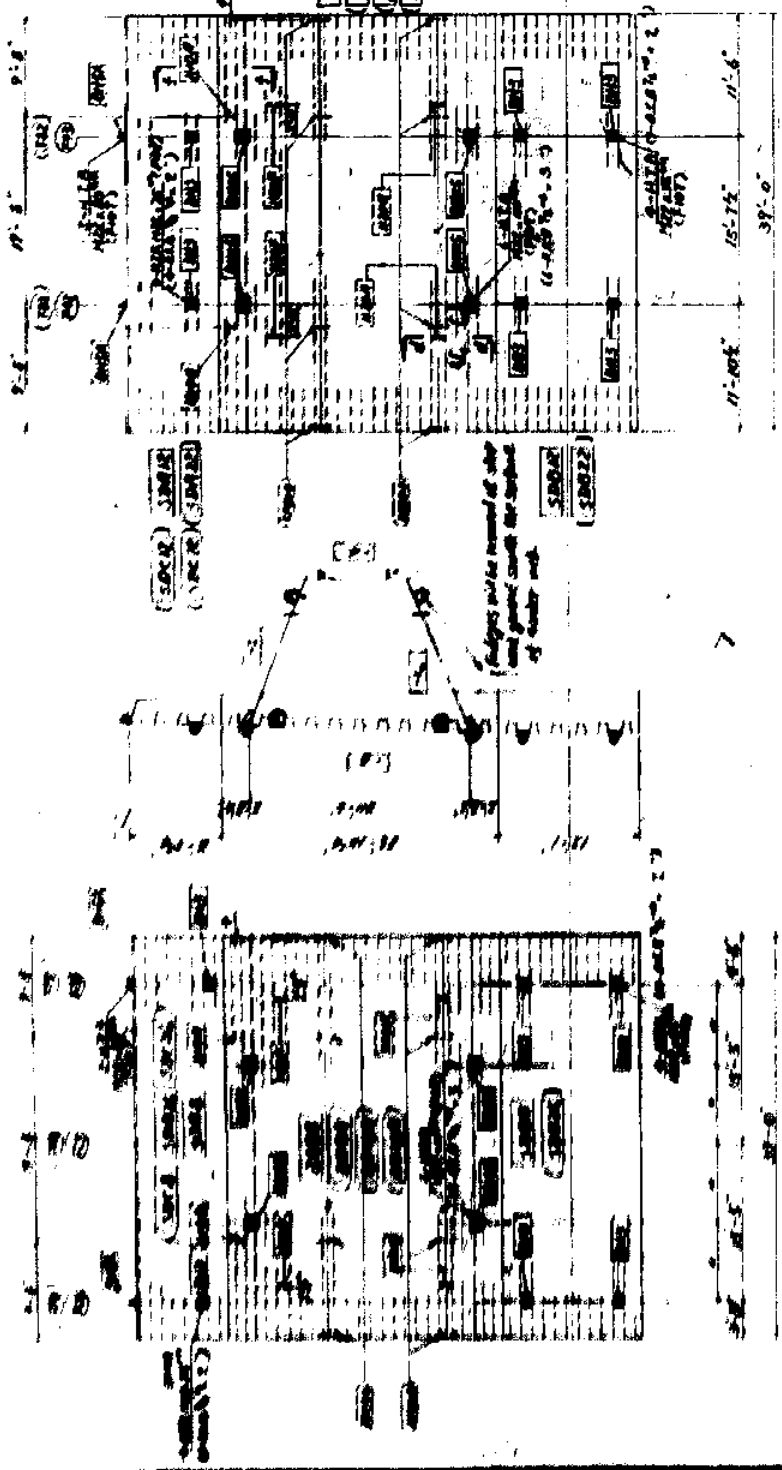
TITLE TYP SHOP ASSEMBLY SEQUENCE FOR BOX GIRDER (2)	
DEPARTMENT	GENERAL ENGINEERING GROUP
DATE	5/30/69
BY	
CHECKED	
APPROVED	

NO. 1 SHOP ASSEMBLY REMOVE SEQUENCE
NO. 2 SHOP ASSEMBLY REMOVE SEQUENCE



PADEYES AND REINFORCEMENT FOR BOX GIRDER
(Scale: 1/4" = 1'-0")

369



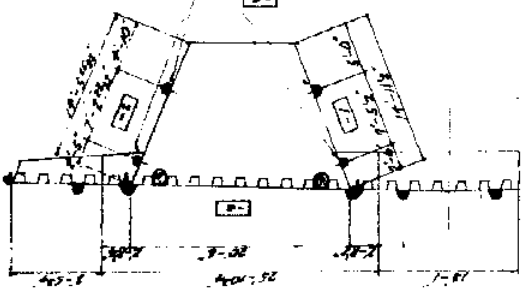
- NOTES:**
1. All material use ASTM A500.
 2. For details of padeyes and reinforcement unless otherwise shown, see Day No. 100-100.
 3. All padeyes and reinforcement will be removed, unless other shown.
 4. Padeyes on the side of the girder shall be removed, and the area ground smooth and checked by eye for any defects. TESTING TO DETERMINE THAT NO PLATE CRACKS ON THE BRIDGE.

5. This slant works with S-401, S-412.
6. Location of bolted padeyes will be shown between floor beam and floor beam unless shown.
7. Length of A.S.T.M. reinforcement slabs for hump bays.

List of Blocks Weights	
WEIGHT	WEIGHT
SDA8	5,900
SDC8	5,700
BBA	78,300
BB2A	78,300
SDB8	2,100
SDA12	5,700
SDC12	5,700
BBA	78,300
BB2A	78,300
SDB12	2,100

TITLE	PADEYES AND REINFORCEMENT FOR BOX GIRDER (Block No. 6, 12, 22 AND 26)
DEPARTMENT	STATE OF LOUISIANA DEPARTMENT OF TRANSPORTATION AND DEVELOPMENT OFFICE OF HIGHWAYS
PROJECT NO.	SEC-27-02
STATE	MISSISSIPPI RIVER BRIDGE (JULING)
CONTRACT NO.	MAIN RIVER CROSSING SUPERSTRUCTURE
DESIGNER	WILLIAMS ENGINEERING CO. INC.
ENGINEER	ISHIKAWA H. HARIMA HEAVY INDUSTRIES CO.
DATE	APRIL 1962
SCALE	1/4" = 1'-0"
BY	W. J. Williams
CHECKED BY	J. Williams

AA PADKEYS AND REINFORCEMENT FOR BOX GIRDER (Scale: 1/4" = 1'-0")



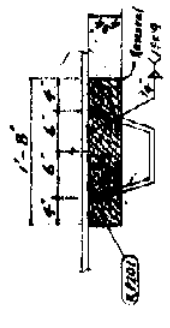
- NOTES:
1. All material use ASTM A36.
 2. For details of pads and other use shown, see Div. No. 5 and 5-A.
 3. All pads and reinforcement will be finished unless other wise shown.
 4. Pads on the deck will be removed, and the area ground smooth and checked by Dye Penetration Testing to determine that no damage exist on the deck.

5. This sheet works with 5-11, 5-12, 5-13, 5-14, 5-15, 5-16, 5-17, 5-18, 5-19, 5-20, 5-21, 5-22, 5-23, 5-24, 5-25, 5-26, 5-27, 5-28, 5-29, 5-30, 5-31, 5-32, 5-33, 5-34, 5-35, 5-36, 5-37, 5-38, 5-39, 5-40, 5-41, 5-42, 5-43, 5-44, 5-45, 5-46, 5-47, 5-48, 5-49, 5-50, 5-51, 5-52, 5-53, 5-54, 5-55, 5-56, 5-57, 5-58, 5-59, 5-60, 5-61, 5-62, 5-63, 5-64, 5-65, 5-66, 5-67, 5-68, 5-69, 5-70, 5-71, 5-72, 5-73, 5-74, 5-75, 5-76, 5-77, 5-78, 5-79, 5-80, 5-81, 5-82, 5-83, 5-84, 5-85, 5-86, 5-87, 5-88, 5-89, 5-90, 5-91, 5-92, 5-93, 5-94, 5-95, 5-96, 5-97, 5-98, 5-99, 5-100.

LIST OF BLOCK WEIGHTS

WEIGHT	WEIGHT	WEIGHT	
SDA9	15,600	SDA10	13,400
SDC9	15,600	SDC10	13,400
BA9	127,600	BA10	117,600
BB9	127,600	BB10	117,600
SDB9	20,600	SDB10	16,600
SDA5	15,600	SDA4	13,400
SDC5	15,600	SDC4	13,400
BA5	127,600	BA4	117,600
BB5	127,600	BB4	117,600
SDB5	20,600	SDB4	16,600

UNIT: LB



SEC. J-J
(Scale: 1/2" = 1'-0")

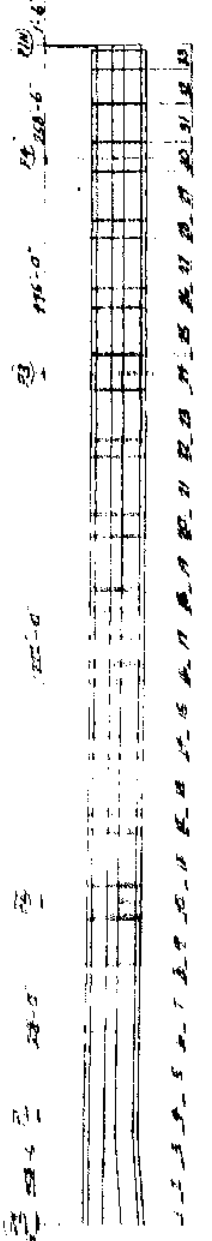


SEC. K-K
(Scale: 1/2" = 1'-0")



SEC. L-L
(Scale: 1/2" = 1'-0")

WEIGHTS DIAGRAM (See Note)

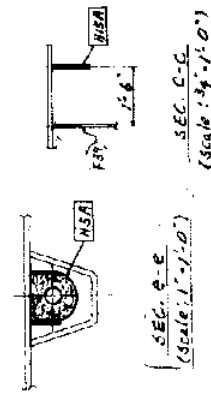
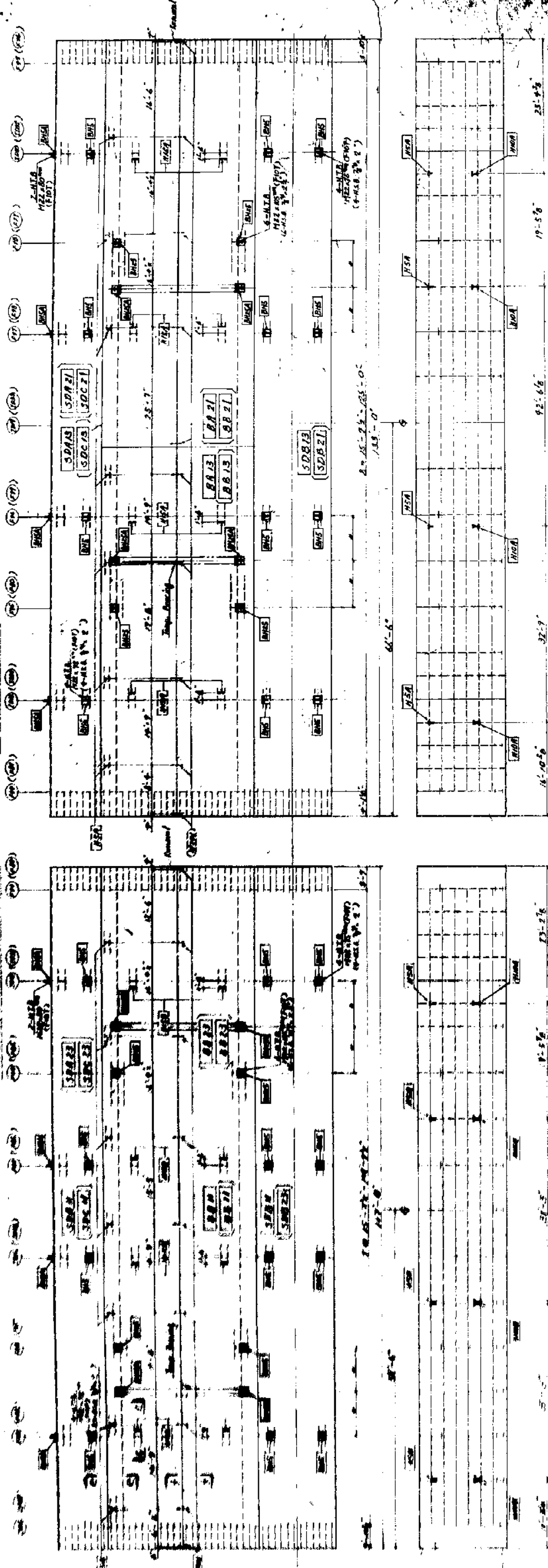


5-11, 5-12, 5-13, 5-14, 5-15, 5-16, 5-17, 5-18, 5-19, 5-20, 5-21, 5-22, 5-23, 5-24, 5-25, 5-26, 5-27, 5-28, 5-29, 5-30, 5-31, 5-32, 5-33, 5-34, 5-35, 5-36, 5-37, 5-38, 5-39, 5-40, 5-41, 5-42, 5-43, 5-44, 5-45, 5-46, 5-47, 5-48, 5-49, 5-50, 5-51, 5-52, 5-53, 5-54, 5-55, 5-56, 5-57, 5-58, 5-59, 5-60, 5-61, 5-62, 5-63, 5-64, 5-65, 5-66, 5-67, 5-68, 5-69, 5-70, 5-71, 5-72, 5-73, 5-74, 5-75, 5-76, 5-77, 5-78, 5-79, 5-80, 5-81, 5-82, 5-83, 5-84, 5-85, 5-86, 5-87, 5-88, 5-89, 5-90, 5-91, 5-92, 5-93, 5-94, 5-95, 5-96, 5-97, 5-98, 5-99, 5-100.

AA PADIES AND REINFORCEMENT FOR BOX GIRDER
(Scale: 1/4" = 1'-0")

BB PADIES AND REINFORCEMENT FOR BOX GIRDER
(Scale: 1/4" = 1'-0")

371

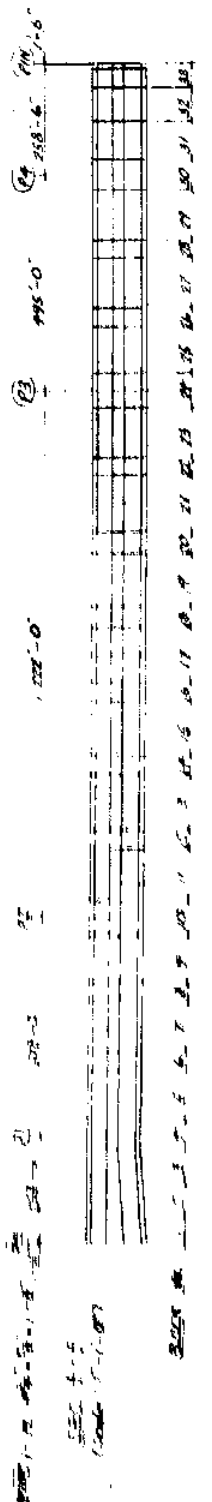


Location of girders will be shown between floor beams and floor beams. Intermediates Supporting Girders shown.

LIST OF BLOCK WEIGHTS

Weight	Weight	UNIT
SDA11	17,000	19,300
SDA12	17,000	19,300
SDA13	17,000	19,300
BA11	132,200	156,200
BA12	132,200	156,200
BA13	132,200	156,200
SDA21	17,000	19,300
SDA22	17,000	19,300
SDA23	17,000	19,300
BA21	132,200	156,200
BA22	132,200	156,200
BA23	132,200	156,200
SDA31	17,000	19,300
SDA32	17,000	19,300
SDA33	17,000	19,300
BA31	132,200	156,200
BA32	132,200	156,200
BA33	132,200	156,200

TAKINGS DIAGRAM
FROM SECTION

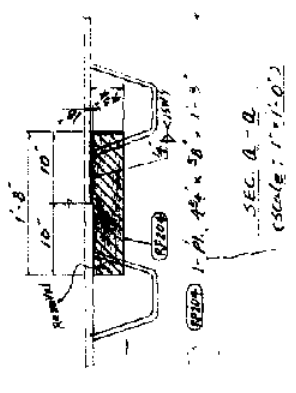
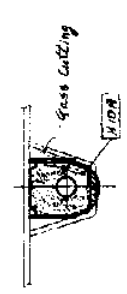
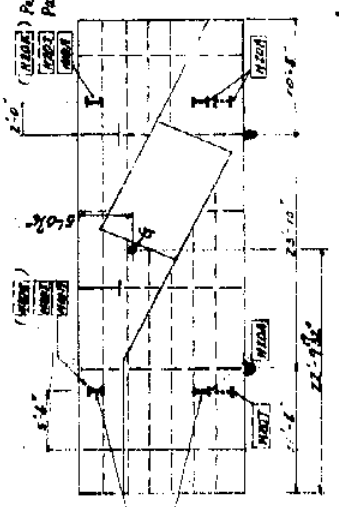
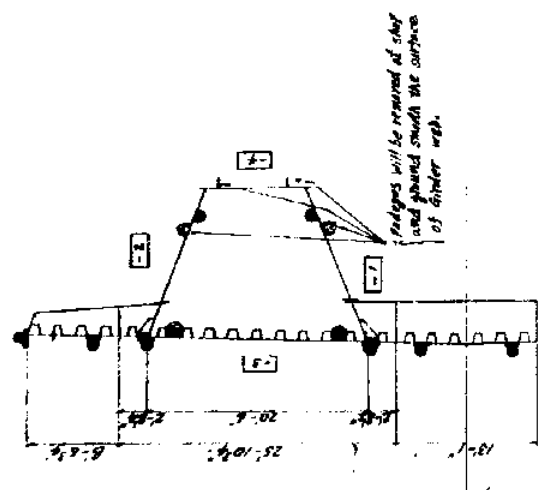
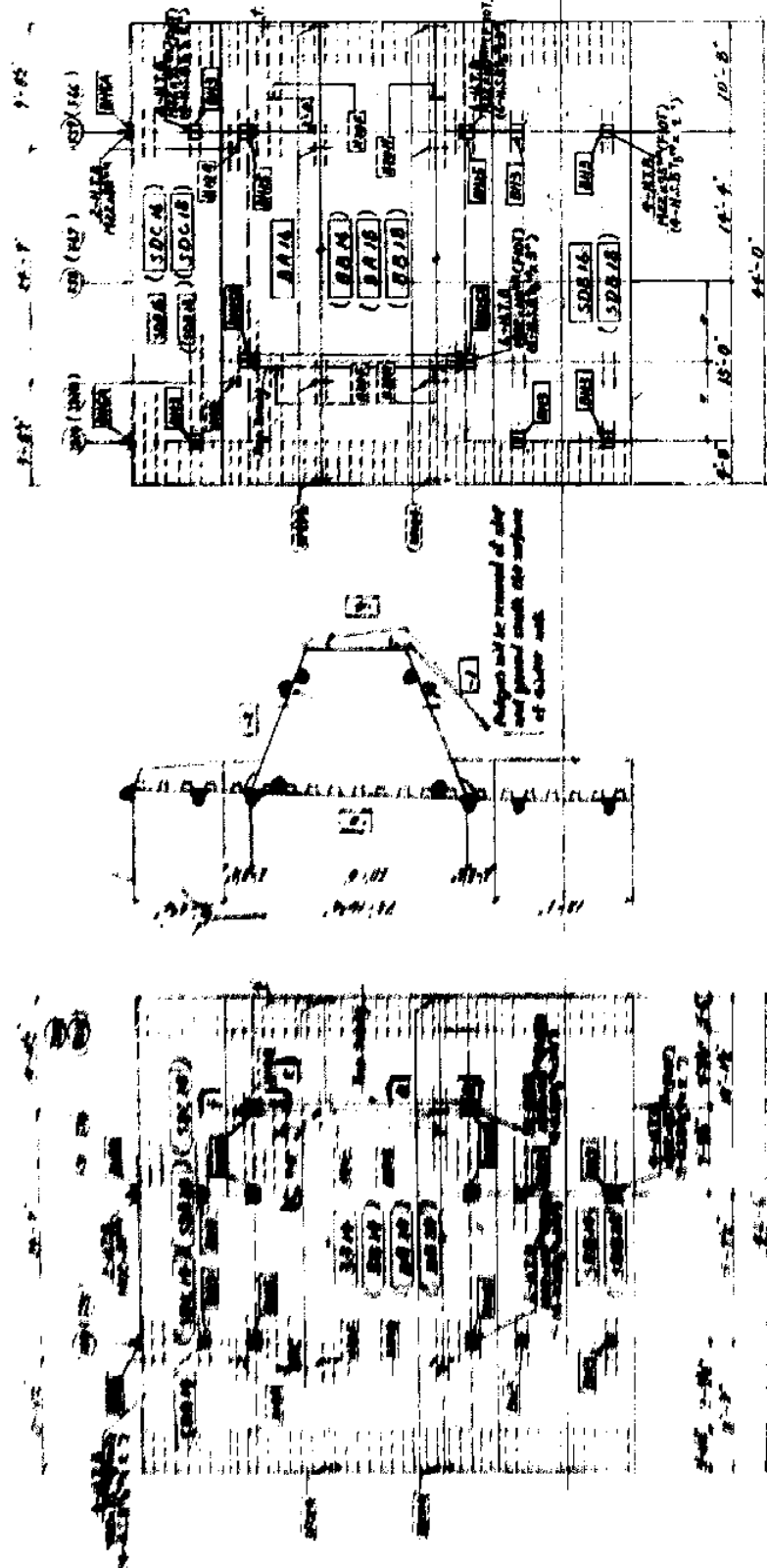


1. 1/2" dia. x 4' Rebar
2. 3/4" dia. x 4' Rebar
3. 1" dia. x 4' Rebar
4. 1 1/4" dia. x 4' Rebar

DATE: 11/13/21
 DRAWN BY: [Signature]
 CHECKED BY: [Signature]
 APPROVED BY: [Signature]

PADEYES AND REINFORCEMENT FOR BOX GIRDER
(Scale: 1/8" = 1'-0")

372



- NOTES:**
1. All materials are ASTM A368.
 2. For details of padeyes and reinforcement areas otherwise shown see Det. No. 3-207 and 3-208.
 3. All padeyes and reinforcement will be removed, unless otherwise shown.
 4. Padeyes will be removed, and the area around smooth and checked by eye - PENETRANT TESTING TO DETERMINE THAT NO FLAWS EXIST ON THE GIRD.

TITLE PADEYES AND REINFORCEMENT FOR BOX GIRDER (Block No. 16, 18 AND 20)
STATE OF LOUISIANA
DEPARTMENT OF TRANSPORTATION AND DEVELOPMENT
OFFICE OF HIGHWAYS

SITE PROJECT NO. 501-37-02
PLAN NO. 30-43-223
MISSISSIPPI RIVER BRIDGE (1951)
MAIN RIVER CROSSING OVER MISSISSIPPI RIVER

DESIGNED BY: J. H. ...
CHECKED BY: ...
DATE: ...

5. This sheet works with 5-41, 5-42, 5-43, 5-44, 5-45, 5-46, 5-47, 5-48, 5-49, 5-50, 5-51, 5-52, 5-53, 5-54, 5-55, 5-56, 5-57, 5-58, 5-59, 5-60, 5-61, 5-62, 5-63, 5-64, 5-65, 5-66, 5-67, 5-68, 5-69, 5-70, 5-71, 5-72, 5-73, 5-74, 5-75, 5-76, 5-77, 5-78, 5-79, 5-80, 5-81, 5-82, 5-83, 5-84, 5-85, 5-86, 5-87, 5-88, 5-89, 5-90, 5-91, 5-92, 5-93, 5-94, 5-95, 5-96, 5-97, 5-98, 5-99, 5-100.

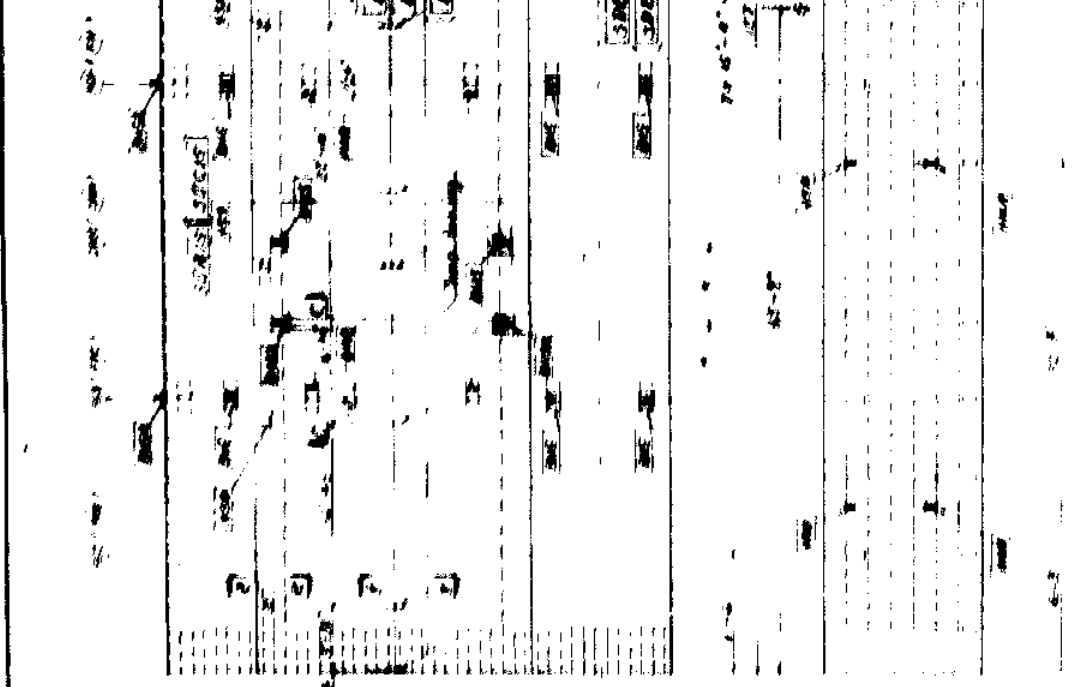
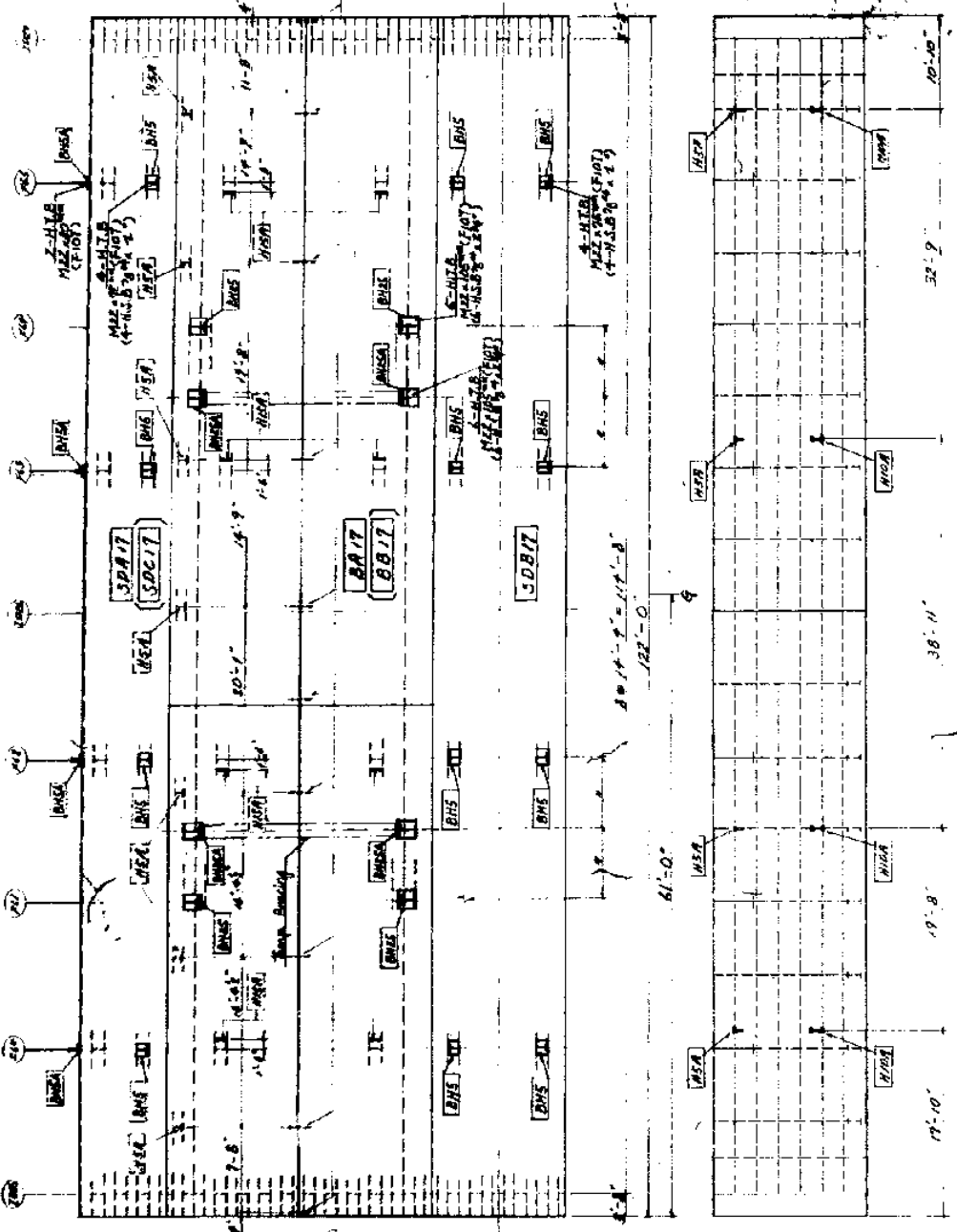
List of Blocks Weights

Block No.	Weight
SDA16	4,700
SDC16	4,700
BA14	16,600
BB14	16,600
SDB14	9,000
SDA20	4,700
SDC20	4,700
BA20	16,600
BB20	16,600
SDB20	9,000

UNIT #

373

PADEYES AND REINFORCEMENT FOR BOX GIRDER
(Scale: 1/8" = 1'-0")



- NOTES:**
1. All material are ASTM A36.
 2. For details of padeyes press other use shown. See Day. No. 5-107-1-1.
 3. All padeyes and reinforcement will be removed, unless otherwise shown.
 4. Padeyes on the deck will be removed, and the area ground smooth and checked by Dye Penetration Testing to determine that no flaws exist on the deck.
 5. This sheet works with S-41 S-41E.

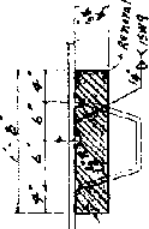
6. Location of bolted padeyes will be shown between floor beam and or floor beam in intermediate diaphragms, unless shown.

7. Length of H.S.B. in parenthesis shows for filling Bolt.

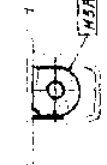
LIST OF BLOCK WEIGHTS

WEIGHT	WEIGHT	WEIGHT
SDA15 18 400	BB1 137 000	
SEC. 5 18 400	SCB19 24 800	
BBA15 137 000	SDA17 17 400	
BB15 137 000	SDC17 17 400	
SCB15 24 800	BA17 134 300	
SDA15 18 400	BB17 134 300	
SEC. 1 18 400	SDC17 17 400	
BBA1 137 000		

UNIT: LB

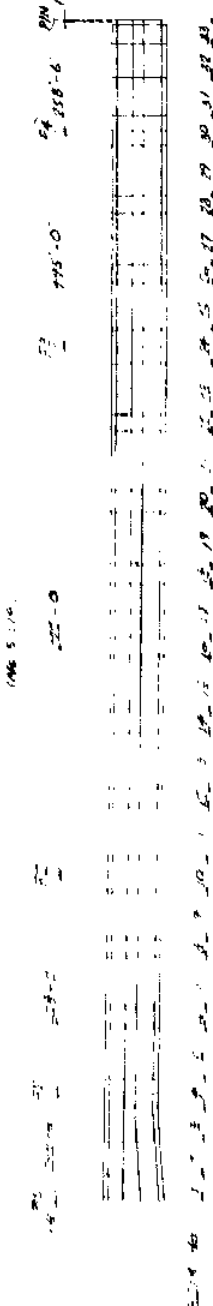


SEC. 1-1
(Scale: 1/2" = 1'-0")



SEC. 2-2
(Scale: 1/2" = 1'-0")

SECTION DIAGRAM

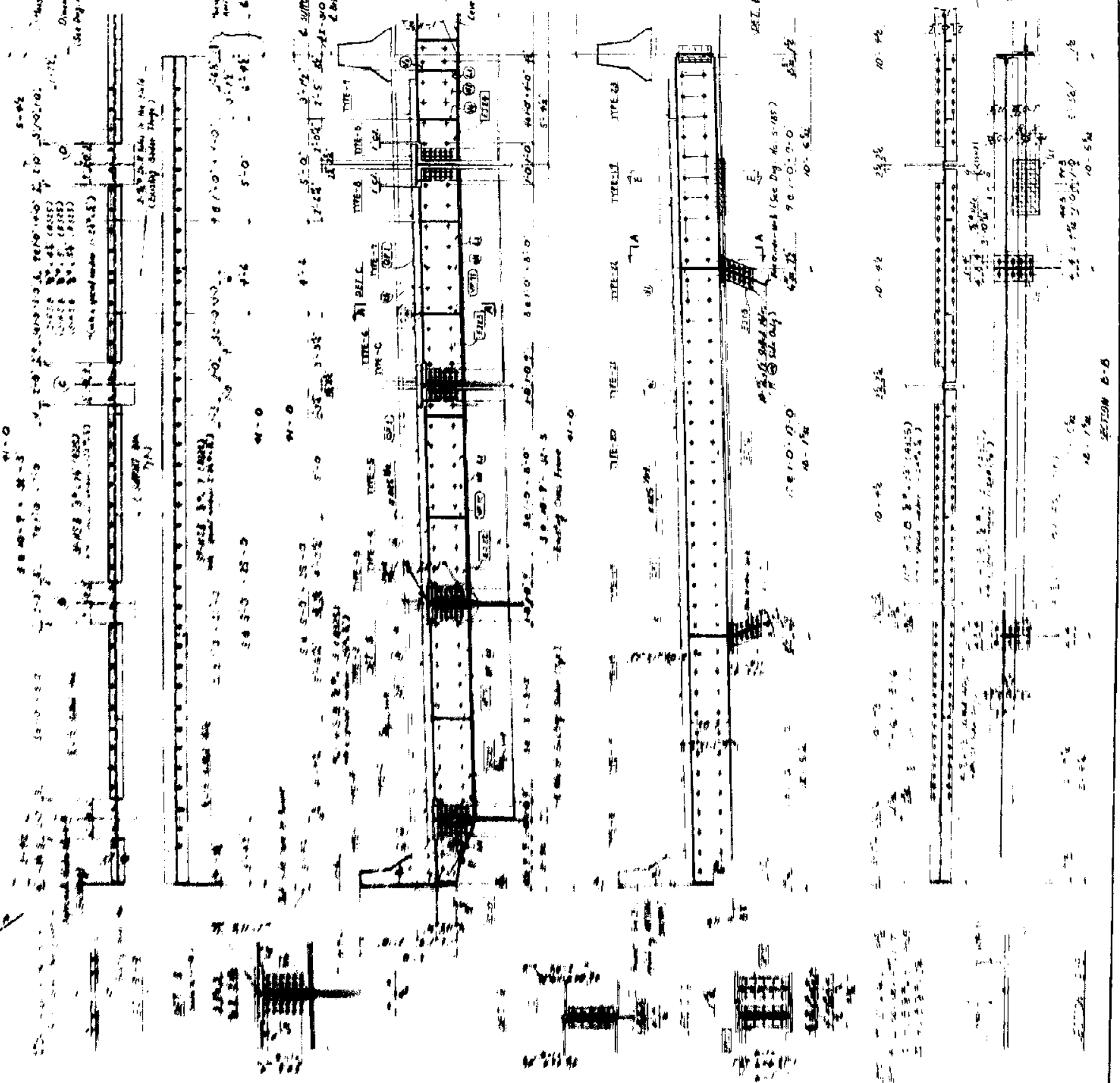


TITLE PADEYES AND REINFORCEMENT FOR BOX GIRDER (CHECK FOR STANDARD)

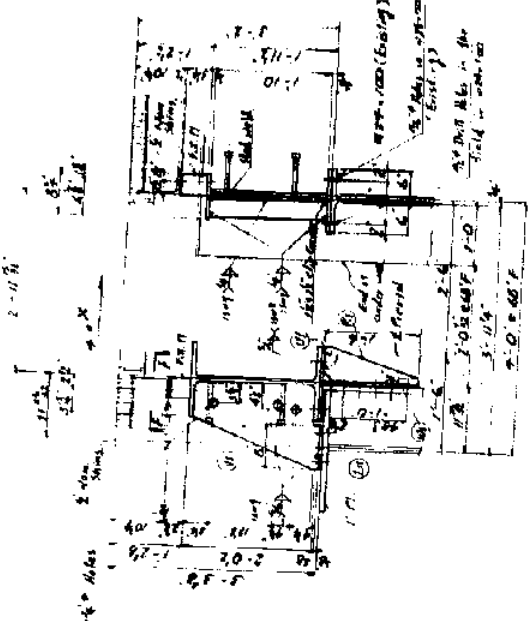
DATE: 10/15/54
DRAWN BY: J. J. [unclear]
CHECKED BY: [unclear]

EXPANSION JOINT SUPPORT E2 (1/2) Δ

SCALE: 1/8" = 1'-0"



SECTION A-A
Scale: 1/8" = 1'-0"



SECTION F-F

NOTES:

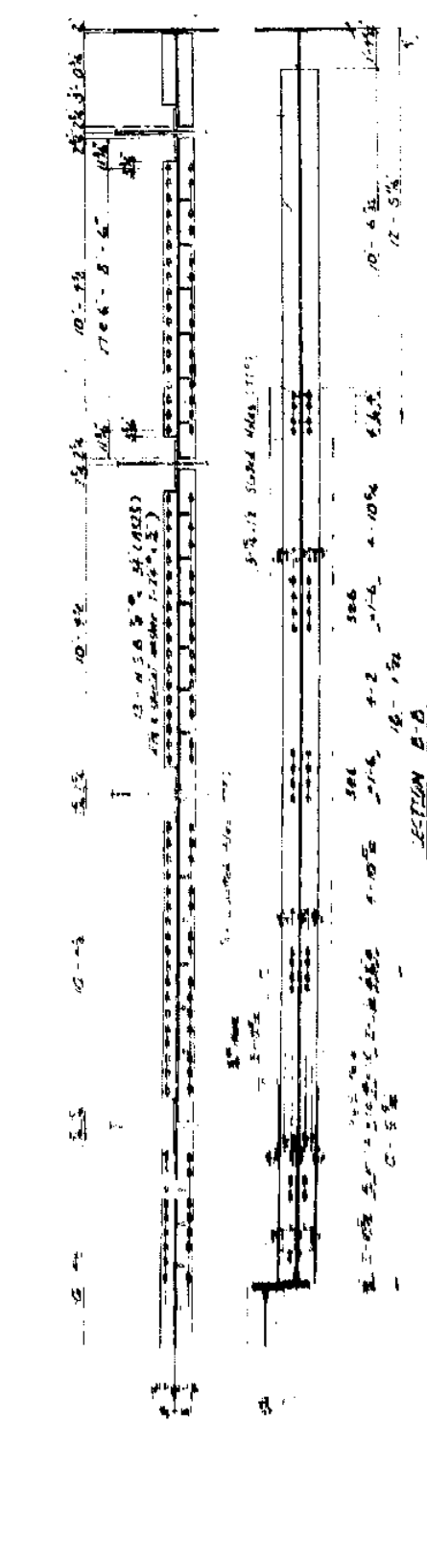
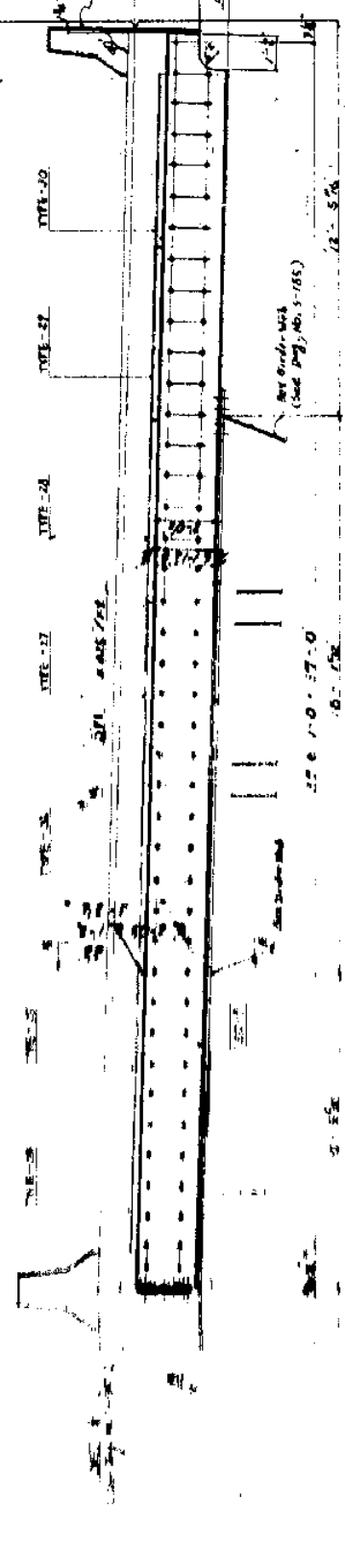
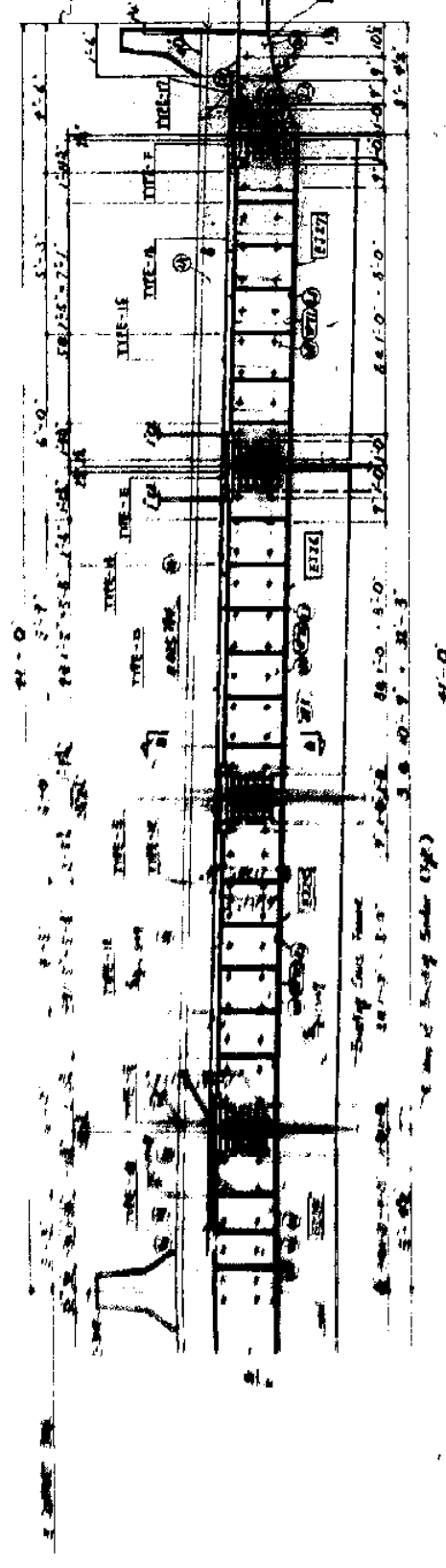
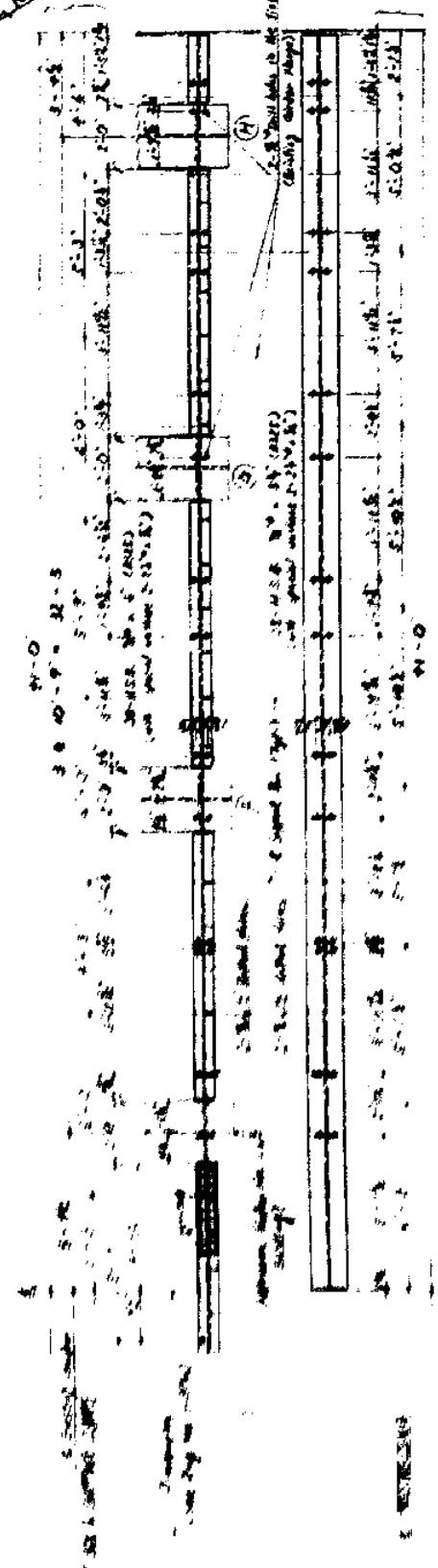
- 1. For General notes, see Day No. 3-1.
- 2. All bolt holes are to be unless otherwise noted.
- 3. & 4. Damages substituted shapes and these details are shown on Day No. 3-105.
- 5. For details of filler plates and skin plates, see Day No. 3-377.
- 6. Work with Day No. 3-376 & 3-377.

NOTES: For relation to slotted holes (1/2" x 1/2"), general widths and edge distance, see Day No. 3-476.

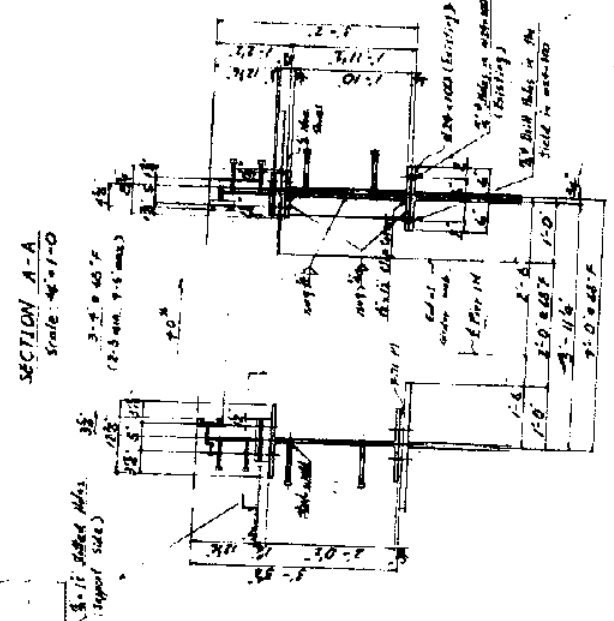
MARKING DIAGRAM
1/8" Scale

TITLE	EXPANSION JOINT SUPPORT E2 (1/2)
STATE OF LOUISIANA	
DEPARTMENT OF TRANSPORTATION AND HIGHWAYS	
OFFICE OF HIGHWAYS	
SHEET NO. 374	
PROJECT NO.	10-25-10
CONTRACT NO.	10-25-10
CONTRACTOR	WILLIAMS BROTHERS ENGINEERING & ARCHITECTS
DESIGNER	WILLIAMS BROTHERS ENGINEERING & ARCHITECTS
CHIEF	J. Williams
IN CHARGE	J. Williams
CHECKED BY	J. Williams
DATE	10-25-10

EXPANSION JOINT SUPPORT E2 (E2)

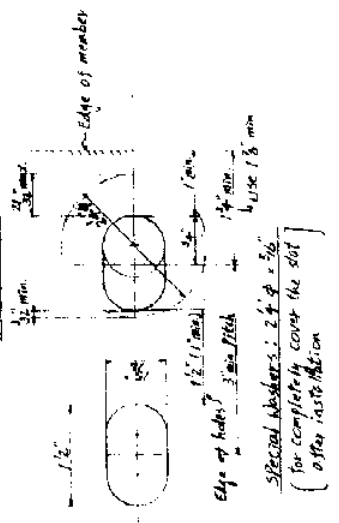


- Notes:
- (1) 1" x 4" x 1/2" (A191)
 - (2) 1" x 4" x 1/2" (A191)
 - (3) 1" x 4" x 1/2" (A191)
 - (4) 1" x 4" x 1/2" (A191)
 - (5) 1" x 4" x 1/2" (A191)
 - (6) 1" x 4" x 1/2" (A191)
 - (7) 1" x 4" x 1/2" (A191)
 - (8) 1" x 4" x 1/2" (A191)
 - (9) 1" x 4" x 1/2" (A191)
 - (10) 1" x 4" x 1/2" (A191)
 - (11) 1" x 4" x 1/2" (A191)
 - (12) 1" x 4" x 1/2" (A191)
 - (13) 1" x 4" x 1/2" (A191)
 - (14) 1" x 4" x 1/2" (A191)
 - (15) 1" x 4" x 1/2" (A191)
 - (16) 1" x 4" x 1/2" (A191)
 - (17) 1" x 4" x 1/2" (A191)
 - (18) 1" x 4" x 1/2" (A191)
 - (19) 1" x 4" x 1/2" (A191)
 - (20) 1" x 4" x 1/2" (A191)
 - (21) 1" x 4" x 1/2" (A191)
 - (22) 1" x 4" x 1/2" (A191)
 - (23) 1" x 4" x 1/2" (A191)
 - (24) 1" x 4" x 1/2" (A191)
 - (25) 1" x 4" x 1/2" (A191)
 - (26) 1" x 4" x 1/2" (A191)
 - (27) 1" x 4" x 1/2" (A191)
 - (28) 1" x 4" x 1/2" (A191)
 - (29) 1" x 4" x 1/2" (A191)
 - (30) 1" x 4" x 1/2" (A191)
 - (31) 1" x 4" x 1/2" (A191)
 - (32) 1" x 4" x 1/2" (A191)
 - (33) 1" x 4" x 1/2" (A191)
 - (34) 1" x 4" x 1/2" (A191)
 - (35) 1" x 4" x 1/2" (A191)
 - (36) 1" x 4" x 1/2" (A191)
 - (37) 1" x 4" x 1/2" (A191)
 - (38) 1" x 4" x 1/2" (A191)
 - (39) 1" x 4" x 1/2" (A191)
 - (40) 1" x 4" x 1/2" (A191)
 - (41) 1" x 4" x 1/2" (A191)
 - (42) 1" x 4" x 1/2" (A191)
 - (43) 1" x 4" x 1/2" (A191)
 - (44) 1" x 4" x 1/2" (A191)
 - (45) 1" x 4" x 1/2" (A191)
 - (46) 1" x 4" x 1/2" (A191)
 - (47) 1" x 4" x 1/2" (A191)
 - (48) 1" x 4" x 1/2" (A191)
 - (49) 1" x 4" x 1/2" (A191)
 - (50) 1" x 4" x 1/2" (A191)



- NOTES:
1. For details of filler plates and shim plates, see Det. No. S-377.
 2. Work with Det. No. S-375 & S-377.
 3. For additional notes, see Det. No. S-378.

RELATION TO SLOTTED HOLES (1/2" x 1/2"), SPECIAL WASHERS AND EDGE DISTANCE



TITLE		EXPANSION JOINT SUPPORT E2 (E2)
STATE OF LOUISIANA		
DEPARTMENT OF TRANSPORTATION AND DEVELOPMENT		
OFFICE		GEN. ENG. DIVISION
PROJECT		MISSISSIPPI RIVER IMPROVEMENT PROJECT
DRAWN BY		J. H. GIBSON
CHECKED BY		J. H. GIBSON
DATE		5-2-57
SCALE		AS SHOWN

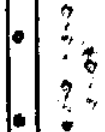
FILLER AND SHIM PLATE FOR EXP. JT. E2

Scale: 1" = 2'-0"

TYPE - 1



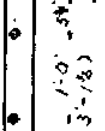
TYPE - 2



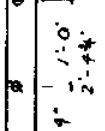
TYPE - 3 (S)



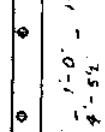
TYPE - 4 (9)



TYPE - 6



TYPE - 7



TYPE - 8



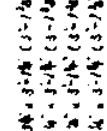
TYPE - 10



TYPE - 19 (20)



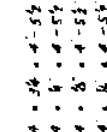
TYPE - 21



TYPE - 22



TYPE - 23



TYPE - 24



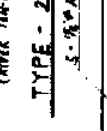
TYPE - 25



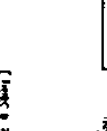
TYPE - 26



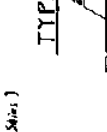
TYPE - 27



TYPE - 28



TYPE - 29



TYPE - 30



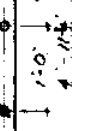
TYPE - 31 (32)



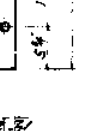
TYPE - 33



TYPE - 34



TYPE - 35



TYPE - 36



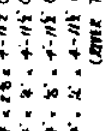
TYPE - 37



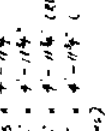
TYPE - 38



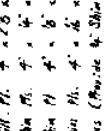
TYPE - 39



TYPE - 40



TYPE - 41



TYPE - 42



TYPE - 43



TYPE - 44



TYPE - 45



TYPE - 46



TYPE - 47



TYPE - 48



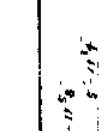
TYPE - 49



TYPE - 50



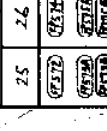
TYPE - 51



TYPE - 52



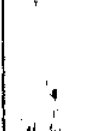
TYPE - 53



TYPE - 54



TYPE - 55



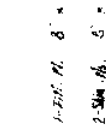
TYPE - 56



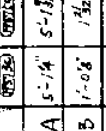
TYPE - 57



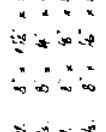
TYPE - 58



TYPE - 59



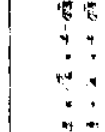
TYPE - 60



TYPE - 61



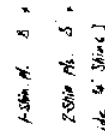
TYPE - 62



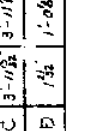
TYPE - 63



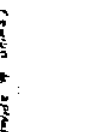
TYPE - 64



TYPE - 65



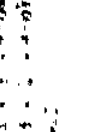
TYPE - 66



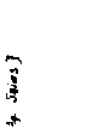
TYPE - 67



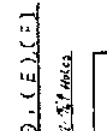
TYPE - 68



TYPE - 69



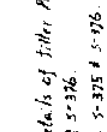
TYPE - 70



TYPE - 71



TYPE - 72



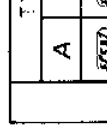
TYPE - 73



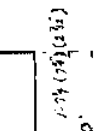
TYPE - 74



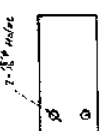
TYPE - 75



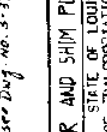
TYPE - 76



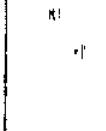
TYPE - 77



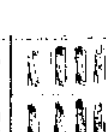
TYPE - 78



TYPE - 79



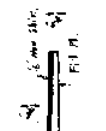
TYPE - 80



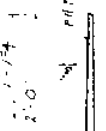
TYPE - 81



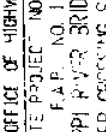
TYPE - 82



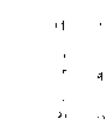
TYPE - 83



TYPE - 84



TYPE - 85



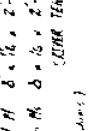
TYPE - 86



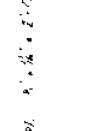
TYPE - 87



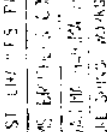
TYPE - 88



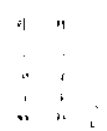
TYPE - 89



TYPE - 90



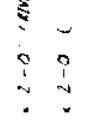
TYPE - 91



TYPE - 92



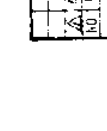
TYPE - 93



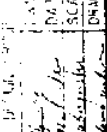
TYPE - 94



TYPE - 95



TYPE - 96



TYPE	25	26	27	28	29
(G25)	(G26)	(G27)	(G28)	(G29)	(G30)
(G31)	(G32)	(G33)	(G34)	(G35)	(G36)
(G37)	(G38)	(G39)	(G40)	(G41)	(G42)

NOTES:
 1. This drawing shows details of filler plates and shim plates on Draw. No. S-375 & S-376.
 2. Work with Draw. No. S-375 & S-376.
 3. For additional notes, see Draw. No. S-375.

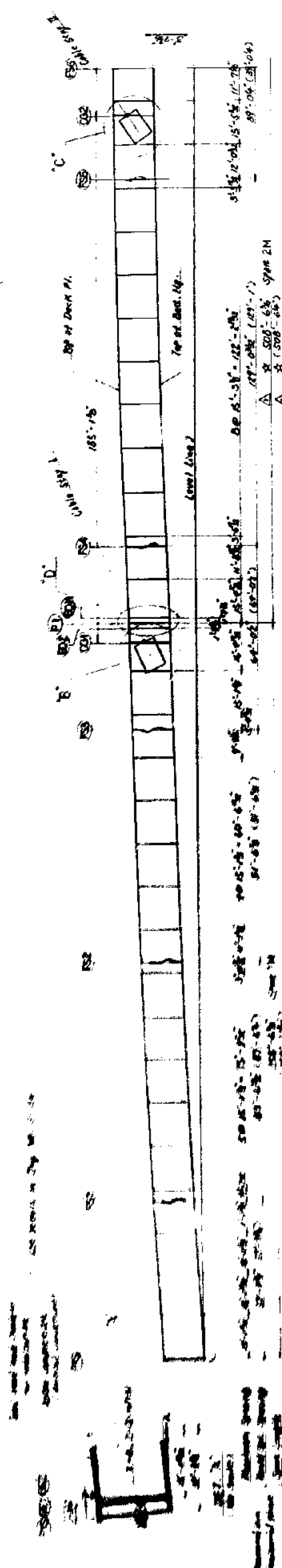
TITLE FILLER AND SHIM PLATE FOR EXP. JT. E2
 STATE OF LOUISIANA
 DEPARTMENT OF TRANSPORTATION AND INFLUENCE
 OFFICE OF HIGHWAYS

STATE PROJECT NO. 450-37-10
 F.A.P. NO. 1-000-452-223
 MISSISSIPPI RIVER BRIDGE (FILLING)
 MAIN RIVER CROSSING SUPERSTRUCTURE
 ST. LOUIS, MISSOURI

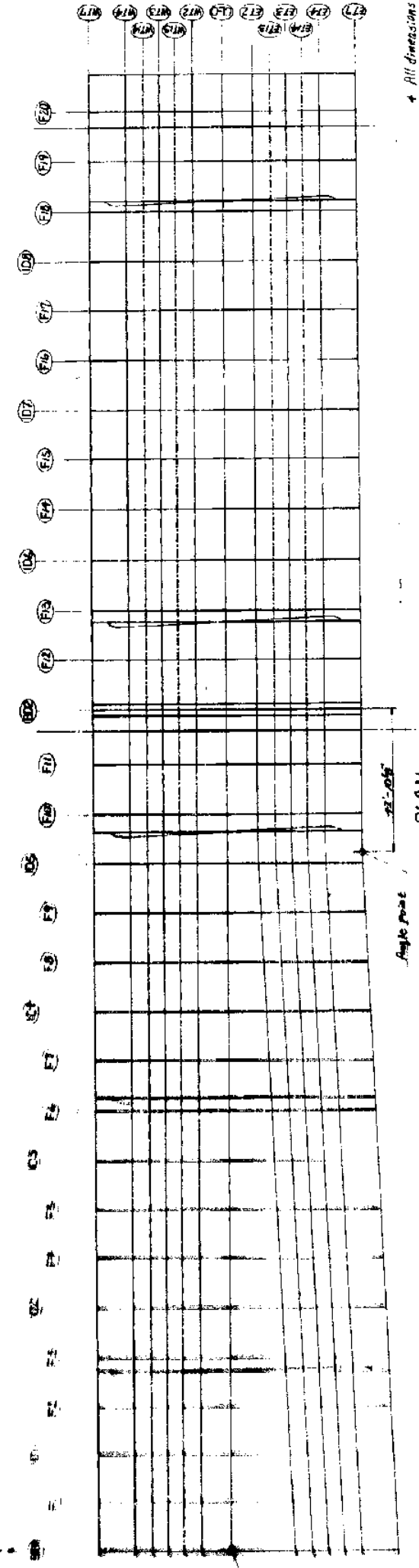
CONTRACTOR: WILLIAMS ENGINEERING COMPANY, INC.
 SUPERVISOR: JOHN W. BROWN, JR.
 ENGINEER: J. W. BROWN, JR.
 MANAGER: J. W. BROWN, JR.
 CHECKED: J. W. BROWN, JR.
 DATE: 5-27-77
 SCALE: 1" = 2'-0"

DESIGNED BY: J. W. BROWN, JR.
 DRAWN BY: J. W. BROWN, JR.

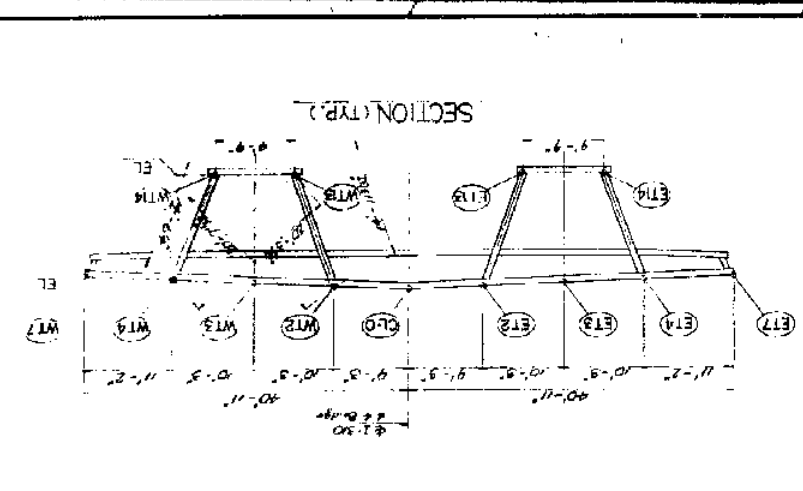
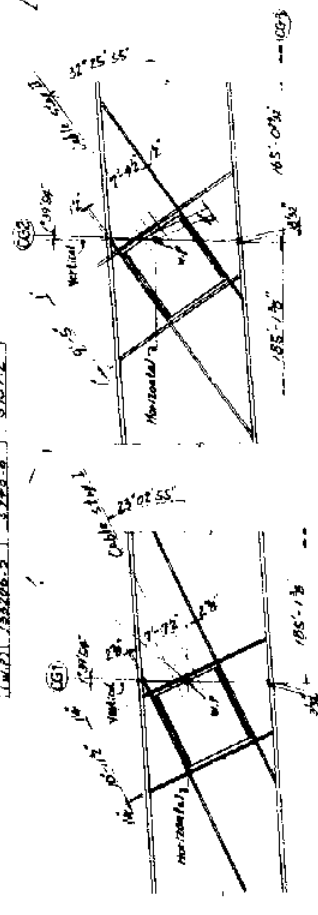
NO. 1. SHOP ASSEMBLY DIAGRAM FOR BOX GIRDER (1/8)



ELEVATION



X	Y	Z
CG1	751'-00.00	12'-0"
CG2	78758.7	5203.6
CG3	857'-00.00	12'-0"
CG4	133206.5	5203.6



NOTES:

1. This drawing will be used to check the dimensions when we will shop assemble the box girders at the shop.
2. Shop assembly is performed under such conditions as both ends of box girders to be level as shown Sec. A-A.
3. All dimensions are given at normal temperature of 68°F.
4. All dimensions given on this sheet include actual camber and at these dimensions, box girders are laid down as shown Sec. A-A.

5. For coordinates and elevations, see Proj. No. S-301 & S-302.
6. For details of inspection sequence and shop assembly sequence for box girders, see Proj. No. S-267 thru S-309.
7. Do not reject dimensions due to axial camber and actual span length.

NO. 1. SHOP ASSEMBLY DIAGRAM FOR BOX GIRDER (1/8)

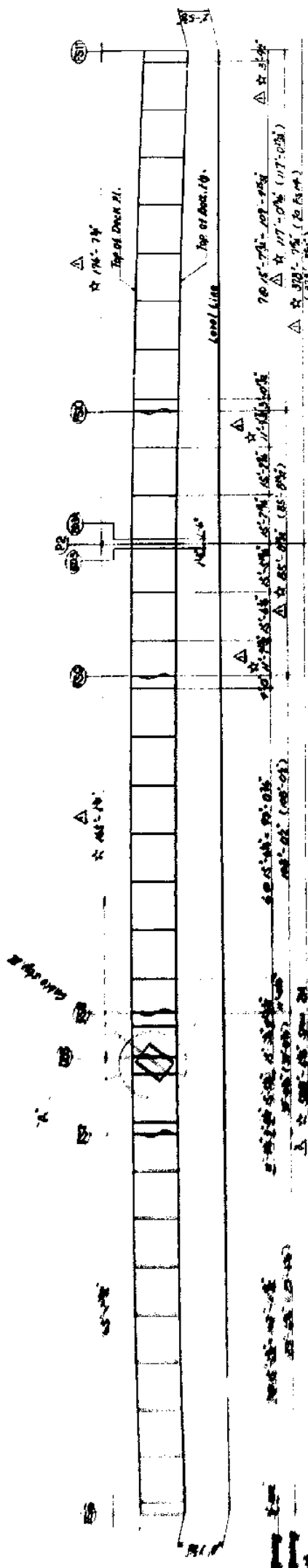
STATE OF LOUISIANA
DEPARTMENT OF TRANSPORTATION AND DEVELOPMENT
OFFICE OF DRAWINGS

PROJECT NO. S-301 & S-302
SHEET NO. 1 OF 2

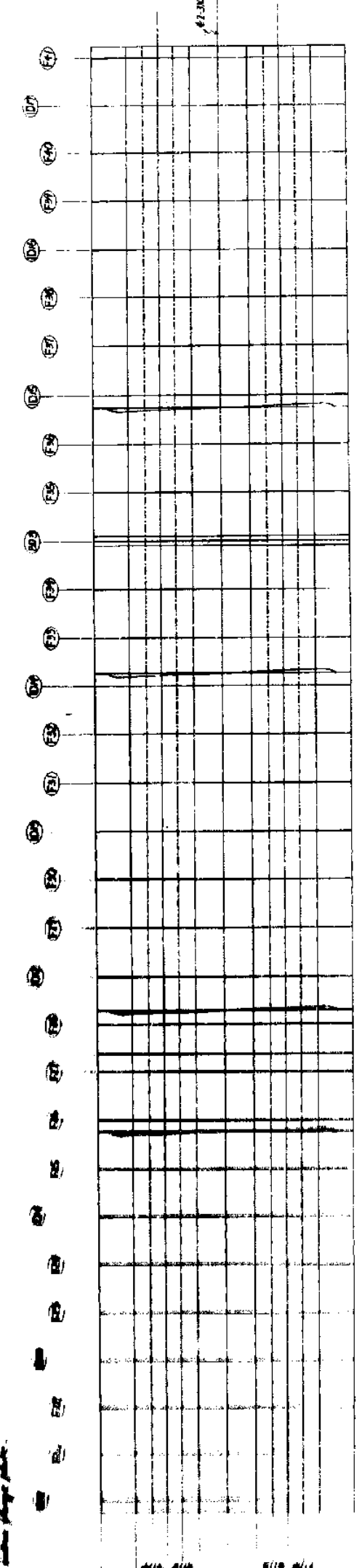
DESIGNED BY: [Name]
CHECKED BY: [Name]
DATE: 4-10-27

SCALE: As shown

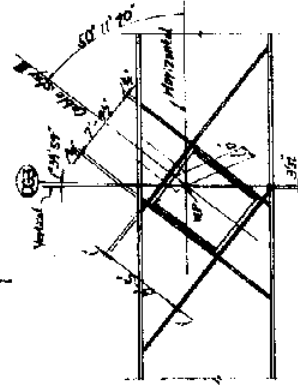
NO. 1 SHOP ASSEMBLY DIAGRAM FOR BOX GIRDER (1/2)



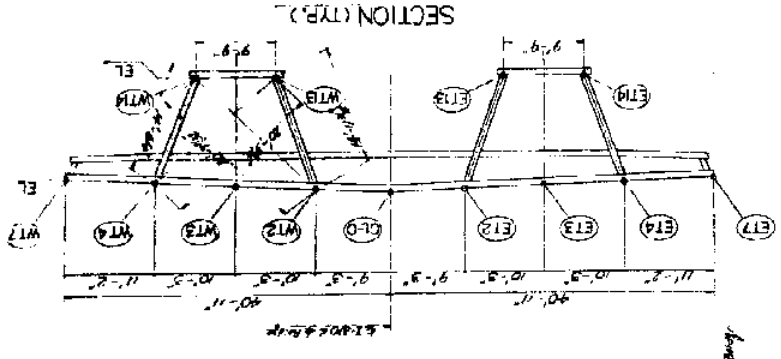
ELEVATION



PLAN



KEY PLAN



NOTES:

- 1. For coordinates and elevations, see Det. No. 5-378 & 5-384.
- 2. For additional notes, see Det. No. 5-378.

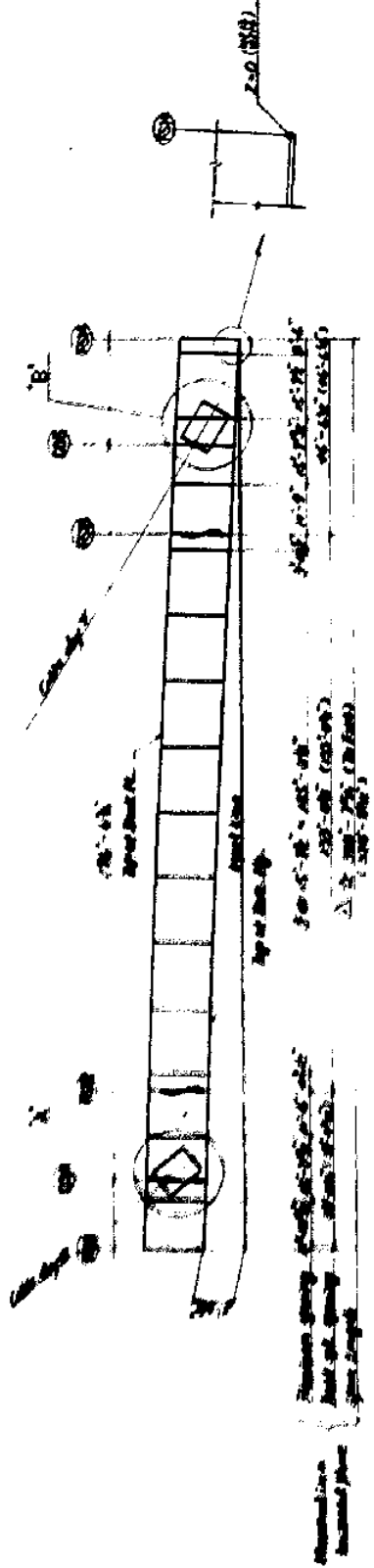
NO. 1 SHOP ASSEMBLY DIAGRAM FOR BOX GIRDER (1/2)

STATE OF LOUISIANA
DEPARTMENT OF TRANSPORTATION AND DEVELOPMENT
OFFICE OF HIGHWAYS

STATE PROJECT NO. 450-37-02
F.P. NO. 1-310-4039223
MISSISSIPPI RIVER BRIDGE (11.1.35)
MAIN RIVER CROSSING SUPERSTRUCTURE

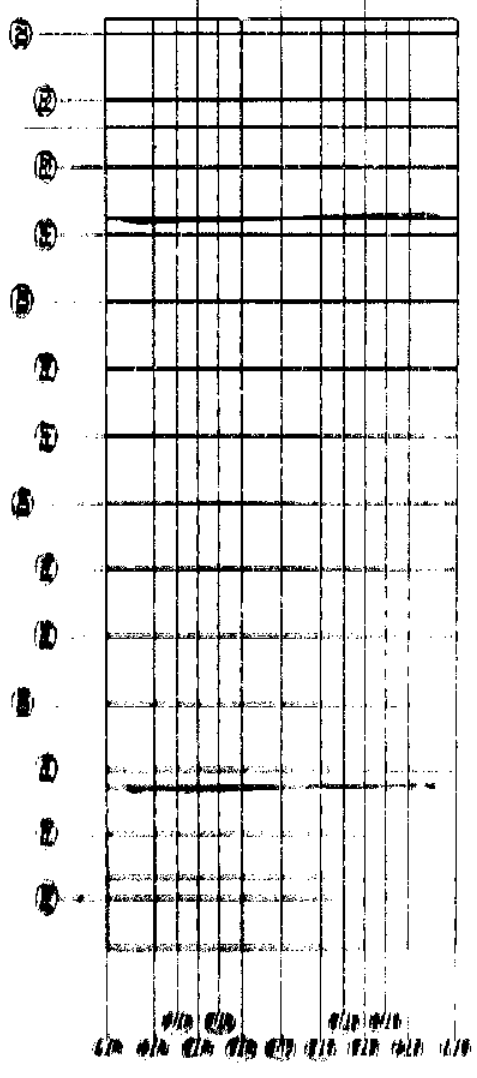
DESIGNED BY: J. K. KENNEDY
CHECKED BY: J. K. KENNEDY
DATE: 1-1-35
DRAWN BY: J. K. KENNEDY
SCALE: 1/4" = 1'-0"

NO. 1 SHOP ASSEMBLY DIAGRAM FOR BOX GIRDER (1/2)

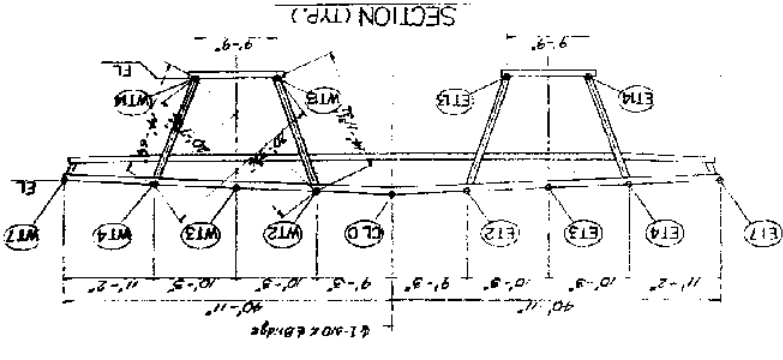


ELEVATION

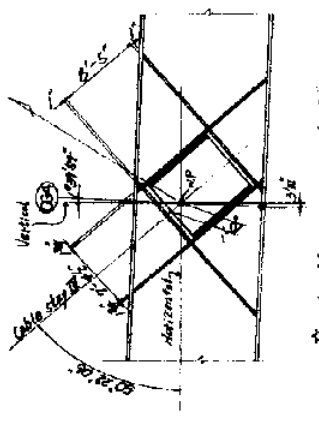
Note:
Dimensions in parentheses show actual dimensions along top of web flange plate.



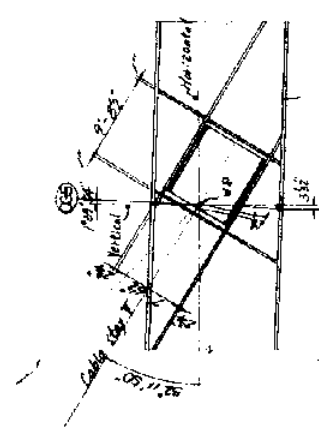
PLAN



X	Y	Z
CG 4	343.75	11.05
CG 2	277.50	33.65
CG 5	176.5	2.0
CG 6	343.75	25.5



DEL. A'
(No scale)



DEL. B'
(No scale)

NOTES:
1. For coordinates and elevations, see Day No. S-385 & S-386.
2. For additional notes, see Day No. S-576.

NO. 1 SHOP ASSEMBLY DIAGRAM FOR BOX GIRDER (1/2)
 STATE OF LOUISIANA
 DEPARTMENT OF TRANSPORTATION AND DEVELOPMENT
 OFFICE OF HIGHWAYS
 STATE PROJECT NO. 450-37-02
 F.A.P. NO. 1-310-41351223
 MISSISSIPPI RIVER BRIDGE (LULING)
 MAIN PAVEMENT SUPERSTRUCTURE

CONTRACT NO. 1-310-41351223
 FABRICATOR: KAWASUMI & SONS, INC., KAWASUMI INDUSTRIES CO., KURE, JAPAN
 MANUFACTURED BY: KAWASUMI & SONS, INC., KAWASUMI INDUSTRIES CO., KURE, JAPAN
 MANUFACTURED BY: KAWASUMI & SONS, INC., KAWASUMI INDUSTRIES CO., KURE, JAPAN
 DRAWN BY: A. Det.

380

COORDINATES AND ELEVATIONS OF NO. 1 SHOP ASS' DIAGRAM (1/2)

EXAMPLE:
14-25
482.1 mm

	NT-7			NT-4			NT-3			NT-2			NT-14			NT-13			CL-0		
	X	Y	Z	X	Y	Z	X	Y	Z	X	Y	Z	X	Y	Z	X	Y	Z	X	Y	Z
82	110	110	110	110	110	110	110	110	110	110	110	110	110	110	110	110	110	110	110	110	110
83	110	110	110	110	110	110	110	110	110	110	110	110	110	110	110	110	110	110	110	110	110
84	110	110	110	110	110	110	110	110	110	110	110	110	110	110	110	110	110	110	110	110	110
85	110	110	110	110	110	110	110	110	110	110	110	110	110	110	110	110	110	110	110	110	110
86	110	110	110	110	110	110	110	110	110	110	110	110	110	110	110	110	110	110	110	110	110
87	110	110	110	110	110	110	110	110	110	110	110	110	110	110	110	110	110	110	110	110	110
88	110	110	110	110	110	110	110	110	110	110	110	110	110	110	110	110	110	110	110	110	110
89	110	110	110	110	110	110	110	110	110	110	110	110	110	110	110	110	110	110	110	110	110
90	110	110	110	110	110	110	110	110	110	110	110	110	110	110	110	110	110	110	110	110	110
91	110	110	110	110	110	110	110	110	110	110	110	110	110	110	110	110	110	110	110	110	110
92	110	110	110	110	110	110	110	110	110	110	110	110	110	110	110	110	110	110	110	110	110
93	110	110	110	110	110	110	110	110	110	110	110	110	110	110	110	110	110	110	110	110	110
94	110	110	110	110	110	110	110	110	110	110	110	110	110	110	110	110	110	110	110	110	110
95	110	110	110	110	110	110	110	110	110	110	110	110	110	110	110	110	110	110	110	110	110
96	110	110	110	110	110	110	110	110	110	110	110	110	110	110	110	110	110	110	110	110	110
97	110	110	110	110	110	110	110	110	110	110	110	110	110	110	110	110	110	110	110	110	110
98	110	110	110	110	110	110	110	110	110	110	110	110	110	110	110	110	110	110	110	110	110
99	110	110	110	110	110	110	110	110	110	110	110	110	110	110	110	110	110	110	110	110	110
100	110	110	110	110	110	110	110	110	110	110	110	110	110	110	110	110	110	110	110	110	110

COORDINATES AND ELEVATIONS OF NO. 1 SHOP ASS. DIAGRAM (1/2)

DATE: 10-1-55
BY: J. Y. Anderson
CHECKED: B. K. Anderson
SCALE: 1/8" = 1'-0"

NOTES:
 1. For details of line no., cut line no. (location) and X, Y, Z, see Diag. No. 5-370.
 2. Unit:
 Upper column: foot inch } see example as shown
 Lower column: mm }

CORONATES AND ELEVATIONS OF No. 1 SHOP ASS. DIAGRAM (228)

Example:

--- 0'-3 1/2"
--- 0'-6 1/2"

LINE NO.	E1-0			E1-1			E1-2			E1-3			E1-4			E1-7			E1-13			E1-14		
	X	Y	Z	X	Y	Z	X	Y	Z	X	Y	Z	X	Y	Z	X	Y	Z	X	Y	Z	X	Y	Z
100	100.0	0.0	0.0	100.0	0.0	0.0	100.0	0.0	0.0	100.0	0.0	0.0	100.0	0.0	0.0	100.0	0.0	0.0	100.0	0.0	0.0	100.0	0.0	0.0
101	100.0	0.0	0.0	100.0	0.0	0.0	100.0	0.0	0.0	100.0	0.0	0.0	100.0	0.0	0.0	100.0	0.0	0.0	100.0	0.0	0.0	100.0	0.0	0.0
102	100.0	0.0	0.0	100.0	0.0	0.0	100.0	0.0	0.0	100.0	0.0	0.0	100.0	0.0	0.0	100.0	0.0	0.0	100.0	0.0	0.0	100.0	0.0	0.0
103	100.0	0.0	0.0	100.0	0.0	0.0	100.0	0.0	0.0	100.0	0.0	0.0	100.0	0.0	0.0	100.0	0.0	0.0	100.0	0.0	0.0	100.0	0.0	0.0
104	100.0	0.0	0.0	100.0	0.0	0.0	100.0	0.0	0.0	100.0	0.0	0.0	100.0	0.0	0.0	100.0	0.0	0.0	100.0	0.0	0.0	100.0	0.0	0.0
105	100.0	0.0	0.0	100.0	0.0	0.0	100.0	0.0	0.0	100.0	0.0	0.0	100.0	0.0	0.0	100.0	0.0	0.0	100.0	0.0	0.0	100.0	0.0	0.0
106	100.0	0.0	0.0	100.0	0.0	0.0	100.0	0.0	0.0	100.0	0.0	0.0	100.0	0.0	0.0	100.0	0.0	0.0	100.0	0.0	0.0	100.0	0.0	0.0
107	100.0	0.0	0.0	100.0	0.0	0.0	100.0	0.0	0.0	100.0	0.0	0.0	100.0	0.0	0.0	100.0	0.0	0.0	100.0	0.0	0.0	100.0	0.0	0.0
108	100.0	0.0	0.0	100.0	0.0	0.0	100.0	0.0	0.0	100.0	0.0	0.0	100.0	0.0	0.0	100.0	0.0	0.0	100.0	0.0	0.0	100.0	0.0	0.0
109	100.0	0.0	0.0	100.0	0.0	0.0	100.0	0.0	0.0	100.0	0.0	0.0	100.0	0.0	0.0	100.0	0.0	0.0	100.0	0.0	0.0	100.0	0.0	0.0
110	100.0	0.0	0.0	100.0	0.0	0.0	100.0	0.0	0.0	100.0	0.0	0.0	100.0	0.0	0.0	100.0	0.0	0.0	100.0	0.0	0.0	100.0	0.0	0.0
111	100.0	0.0	0.0	100.0	0.0	0.0	100.0	0.0	0.0	100.0	0.0	0.0	100.0	0.0	0.0	100.0	0.0	0.0	100.0	0.0	0.0	100.0	0.0	0.0
112	100.0	0.0	0.0	100.0	0.0	0.0	100.0	0.0	0.0	100.0	0.0	0.0	100.0	0.0	0.0	100.0	0.0	0.0	100.0	0.0	0.0	100.0	0.0	0.0
113	100.0	0.0	0.0	100.0	0.0	0.0	100.0	0.0	0.0	100.0	0.0	0.0	100.0	0.0	0.0	100.0	0.0	0.0	100.0	0.0	0.0	100.0	0.0	0.0
114	100.0	0.0	0.0	100.0	0.0	0.0	100.0	0.0	0.0	100.0	0.0	0.0	100.0	0.0	0.0	100.0	0.0	0.0	100.0	0.0	0.0	100.0	0.0	0.0
115	100.0	0.0	0.0	100.0	0.0	0.0	100.0	0.0	0.0	100.0	0.0	0.0	100.0	0.0	0.0	100.0	0.0	0.0	100.0	0.0	0.0	100.0	0.0	0.0
116	100.0	0.0	0.0	100.0	0.0	0.0	100.0	0.0	0.0	100.0	0.0	0.0	100.0	0.0	0.0	100.0	0.0	0.0	100.0	0.0	0.0	100.0	0.0	0.0
117	100.0	0.0	0.0	100.0	0.0	0.0	100.0	0.0	0.0	100.0	0.0	0.0	100.0	0.0	0.0	100.0	0.0	0.0	100.0	0.0	0.0	100.0	0.0	0.0
118	100.0	0.0	0.0	100.0	0.0	0.0	100.0	0.0	0.0	100.0	0.0	0.0	100.0	0.0	0.0	100.0	0.0	0.0	100.0	0.0	0.0	100.0	0.0	0.0
119	100.0	0.0	0.0	100.0	0.0	0.0	100.0	0.0	0.0	100.0	0.0	0.0	100.0	0.0	0.0	100.0	0.0	0.0	100.0	0.0	0.0	100.0	0.0	0.0
120	100.0	0.0	0.0	100.0	0.0	0.0	100.0	0.0	0.0	100.0	0.0	0.0	100.0	0.0	0.0	100.0	0.0	0.0	100.0	0.0	0.0	100.0	0.0	0.0

COORDINATES AND ELEVATIONS OF No. 1 SHOP ASS. DIAGRAM (228)

DEFINITION OF POINTS AND DEVELOPMENT

DATE: 11-27-32

BY: J. H. ...

FOR: Y. ...

5-222

4-10-32

M. ...

NOTES:

1. For details of line no. cut line no. (location) and X, Y, Z, see Diag. No. 5-378.

2. Unit: upper column: foot inch } see example as shown lower column: mm }

COORDINATES AND ELEVATIONS OF NO. 1 SHOP ASS. DIAGRAM (3/6)

382

Example:
17.48
5582.24

Line No.	M-7			M-4			M-3			M-2			M-14			M-13			CL-0		
	X	Y	Z	X	Y	Z	X	Y	Z	X	Y	Z	X	Y	Z	X	Y	Z	X	Y	Z
F28	2481.1	1741.0	17.48	2481.1	1741.0	17.48	2481.1	1741.0	17.48	2481.1	1741.0	17.48	2481.1	1741.0	17.48	2481.1	1741.0	17.48	2481.1	1741.0	17.48
F29	2481.1	1741.0	17.48	2481.1	1741.0	17.48	2481.1	1741.0	17.48	2481.1	1741.0	17.48	2481.1	1741.0	17.48	2481.1	1741.0	17.48	2481.1	1741.0	17.48
F30	2481.1	1741.0	17.48	2481.1	1741.0	17.48	2481.1	1741.0	17.48	2481.1	1741.0	17.48	2481.1	1741.0	17.48	2481.1	1741.0	17.48	2481.1	1741.0	17.48
F31	2481.1	1741.0	17.48	2481.1	1741.0	17.48	2481.1	1741.0	17.48	2481.1	1741.0	17.48	2481.1	1741.0	17.48	2481.1	1741.0	17.48	2481.1	1741.0	17.48
F32	2481.1	1741.0	17.48	2481.1	1741.0	17.48	2481.1	1741.0	17.48	2481.1	1741.0	17.48	2481.1	1741.0	17.48	2481.1	1741.0	17.48	2481.1	1741.0	17.48
F33	2481.1	1741.0	17.48	2481.1	1741.0	17.48	2481.1	1741.0	17.48	2481.1	1741.0	17.48	2481.1	1741.0	17.48	2481.1	1741.0	17.48	2481.1	1741.0	17.48
F34	2481.1	1741.0	17.48	2481.1	1741.0	17.48	2481.1	1741.0	17.48	2481.1	1741.0	17.48	2481.1	1741.0	17.48	2481.1	1741.0	17.48	2481.1	1741.0	17.48
F35	2481.1	1741.0	17.48	2481.1	1741.0	17.48	2481.1	1741.0	17.48	2481.1	1741.0	17.48	2481.1	1741.0	17.48	2481.1	1741.0	17.48	2481.1	1741.0	17.48
F36	2481.1	1741.0	17.48	2481.1	1741.0	17.48	2481.1	1741.0	17.48	2481.1	1741.0	17.48	2481.1	1741.0	17.48	2481.1	1741.0	17.48	2481.1	1741.0	17.48
F37	2481.1	1741.0	17.48	2481.1	1741.0	17.48	2481.1	1741.0	17.48	2481.1	1741.0	17.48	2481.1	1741.0	17.48	2481.1	1741.0	17.48	2481.1	1741.0	17.48

NOTES:
1. For details of line no. cut line no. (location) and X, Y, Z, see Day No. 5-379.
2. Unit:
Upper column: foot inch } see example above
Lower column: mm } upper right corner

COORDINATES AND ELEVATIONS OF NO. 1 SHOP ASS. DIAGRAM (3/6)
For 7 pan woods
A. 1-1/2" x 1/2" x 1/2"
M. Do.

COORDINATES AND ELEVATIONS OF NO. 1 SHOP ASS' DIAGRAM (5/6) △

364

Example:
--- 17'-00"
--- 5286.6

Point	WT-1			WT-2			WT-3			WT-4			WT-13			WT-14			WT-15		
	X	Y	Z	X	Y	Z	X	Y	Z	X	Y	Z	X	Y	Z	X	Y	Z	X	Y	Z
F38	310.0	110.0	0.0	310.0	110.0	0.0	310.0	110.0	0.0	310.0	110.0	0.0	310.0	110.0	0.0	310.0	110.0	0.0	310.0	110.0	0.0
1016	310.0	110.0	0.0	310.0	110.0	0.0	310.0	110.0	0.0	310.0	110.0	0.0	310.0	110.0	0.0	310.0	110.0	0.0	310.0	110.0	0.0
F39	310.0	110.0	0.0	310.0	110.0	0.0	310.0	110.0	0.0	310.0	110.0	0.0	310.0	110.0	0.0	310.0	110.0	0.0	310.0	110.0	0.0
F40	310.0	110.0	0.0	310.0	110.0	0.0	310.0	110.0	0.0	310.0	110.0	0.0	310.0	110.0	0.0	310.0	110.0	0.0	310.0	110.0	0.0
1017	310.0	110.0	0.0	310.0	110.0	0.0	310.0	110.0	0.0	310.0	110.0	0.0	310.0	110.0	0.0	310.0	110.0	0.0	310.0	110.0	0.0
1018	310.0	110.0	0.0	310.0	110.0	0.0	310.0	110.0	0.0	310.0	110.0	0.0	310.0	110.0	0.0	310.0	110.0	0.0	310.0	110.0	0.0
F41	310.0	110.0	0.0	310.0	110.0	0.0	310.0	110.0	0.0	310.0	110.0	0.0	310.0	110.0	0.0	310.0	110.0	0.0	310.0	110.0	0.0
F42	310.0	110.0	0.0	310.0	110.0	0.0	310.0	110.0	0.0	310.0	110.0	0.0	310.0	110.0	0.0	310.0	110.0	0.0	310.0	110.0	0.0
1019	310.0	110.0	0.0	310.0	110.0	0.0	310.0	110.0	0.0	310.0	110.0	0.0	310.0	110.0	0.0	310.0	110.0	0.0	310.0	110.0	0.0
F43	310.0	110.0	0.0	310.0	110.0	0.0	310.0	110.0	0.0	310.0	110.0	0.0	310.0	110.0	0.0	310.0	110.0	0.0	310.0	110.0	0.0
F44	310.0	110.0	0.0	310.0	110.0	0.0	310.0	110.0	0.0	310.0	110.0	0.0	310.0	110.0	0.0	310.0	110.0	0.0	310.0	110.0	0.0
F45	310.0	110.0	0.0	310.0	110.0	0.0	310.0	110.0	0.0	310.0	110.0	0.0	310.0	110.0	0.0	310.0	110.0	0.0	310.0	110.0	0.0
F46	310.0	110.0	0.0	310.0	110.0	0.0	310.0	110.0	0.0	310.0	110.0	0.0	310.0	110.0	0.0	310.0	110.0	0.0	310.0	110.0	0.0
1020	310.0	110.0	0.0	310.0	110.0	0.0	310.0	110.0	0.0	310.0	110.0	0.0	310.0	110.0	0.0	310.0	110.0	0.0	310.0	110.0	0.0
F47	310.0	110.0	0.0	310.0	110.0	0.0	310.0	110.0	0.0	310.0	110.0	0.0	310.0	110.0	0.0	310.0	110.0	0.0	310.0	110.0	0.0
F48	310.0	110.0	0.0	310.0	110.0	0.0	310.0	110.0	0.0	310.0	110.0	0.0	310.0	110.0	0.0	310.0	110.0	0.0	310.0	110.0	0.0
1021	310.0	110.0	0.0	310.0	110.0	0.0	310.0	110.0	0.0	310.0	110.0	0.0	310.0	110.0	0.0	310.0	110.0	0.0	310.0	110.0	0.0
F49	310.0	110.0	0.0	310.0	110.0	0.0	310.0	110.0	0.0	310.0	110.0	0.0	310.0	110.0	0.0	310.0	110.0	0.0	310.0	110.0	0.0
F50	310.0	110.0	0.0	310.0	110.0	0.0	310.0	110.0	0.0	310.0	110.0	0.0	310.0	110.0	0.0	310.0	110.0	0.0	310.0	110.0	0.0
1022	310.0	110.0	0.0	310.0	110.0	0.0	310.0	110.0	0.0	310.0	110.0	0.0	310.0	110.0	0.0	310.0	110.0	0.0	310.0	110.0	0.0
F51	310.0	110.0	0.0	310.0	110.0	0.0	310.0	110.0	0.0	310.0	110.0	0.0	310.0	110.0	0.0	310.0	110.0	0.0	310.0	110.0	0.0
F52	310.0	110.0	0.0	310.0	110.0	0.0	310.0	110.0	0.0	310.0	110.0	0.0	310.0	110.0	0.0	310.0	110.0	0.0	310.0	110.0	0.0
F53	310.0	110.0	0.0	310.0	110.0	0.0	310.0	110.0	0.0	310.0	110.0	0.0	310.0	110.0	0.0	310.0	110.0	0.0	310.0	110.0	0.0
F54	310.0	110.0	0.0	310.0	110.0	0.0	310.0	110.0	0.0	310.0	110.0	0.0	310.0	110.0	0.0	310.0	110.0	0.0	310.0	110.0	0.0

COORDINATES AND ELEVATIONS OF NO. 1 SHOP ASS' DIAGRAM (5/6)

DATE: 11-1-52
BY: [Signature]
CHECKED: [Signature]

SCALE: 1" = 10'-0"

PROJECT: [Project Name]

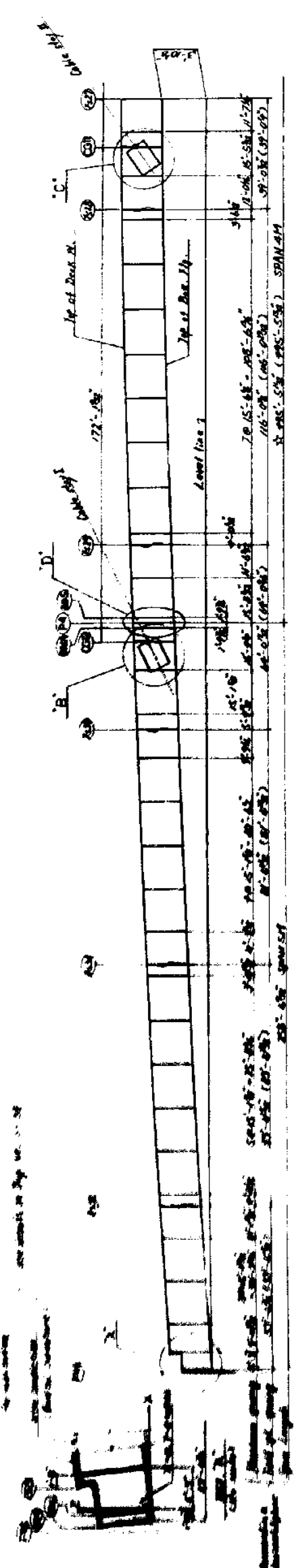
NO. 1 SHOP ASS' DIAGRAM

DATE: 11-1-52
BY: [Signature]
CHECKED: [Signature]

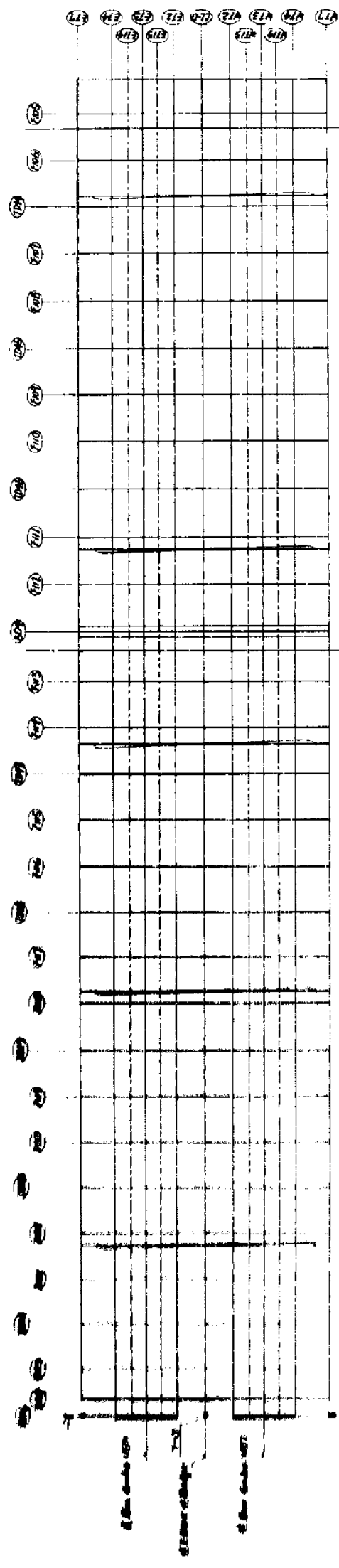
NOTES:
1. For details of line no., cut line no. (location) and A. I. Z., see Day. No. 5-360.
2. Unit: upper column: foot inch } see example in sheet lower column: mill } upper right corner

NO. 1 SHOP ASS' DIAGRAM	5-365
DATE: 11-1-52	4-10-51
BY: [Signature]	[Signature]
CHECKED: [Signature]	[Signature]

NO. 1 SHOP ASSEMBLY DIAGRAM FOR BOX GIRDER (1/3)

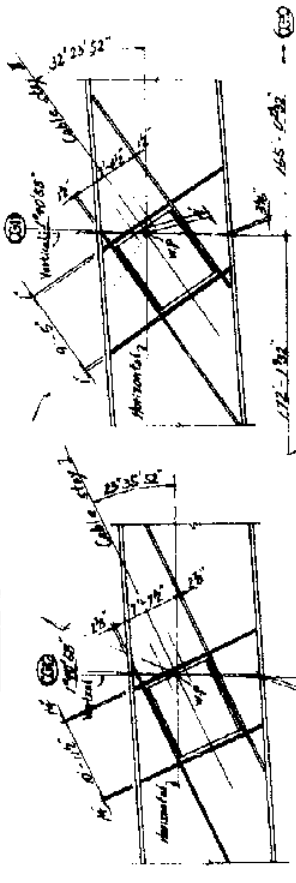


ELEVATION



PLAN

W/P	X	Y	Z
CG12	7577.3	19'-6"	11'-0"
CG11	7577.6	19'-6"	11'-0"



- NOTES:**
1. This drawing will be used to check the dimensions when the shop assembles the box girders at the shop.
 2. Shop assembly is performed under wet conditions as both ends of the girders to be level as shown Sec. A-A.
 3. All dimensions are given at normal temperature (60°F).
 4. All dimensions given in this sheet include actual camber and at these dimensions, box girders are laid down as shown Sec. A-A.
 5. For cambers and elevations, see Proj. No. 5-300 x 5-391.
 6. For details of inspection sequence and shop assembly sequence for box girders, see Proj. No. 5-367 thru 5-367.
 7. Double adjusted dimensions are to actual camber and actual span lengths.

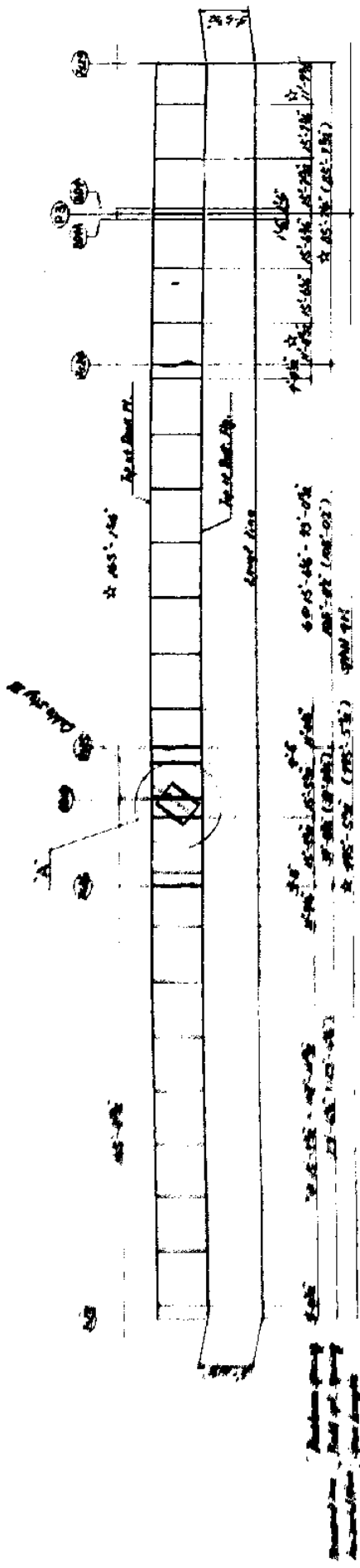
NO. 1 SHOP ASSEMBLY DIAGRAM FOR BOX GIRDER (2/3)

REVISIONS

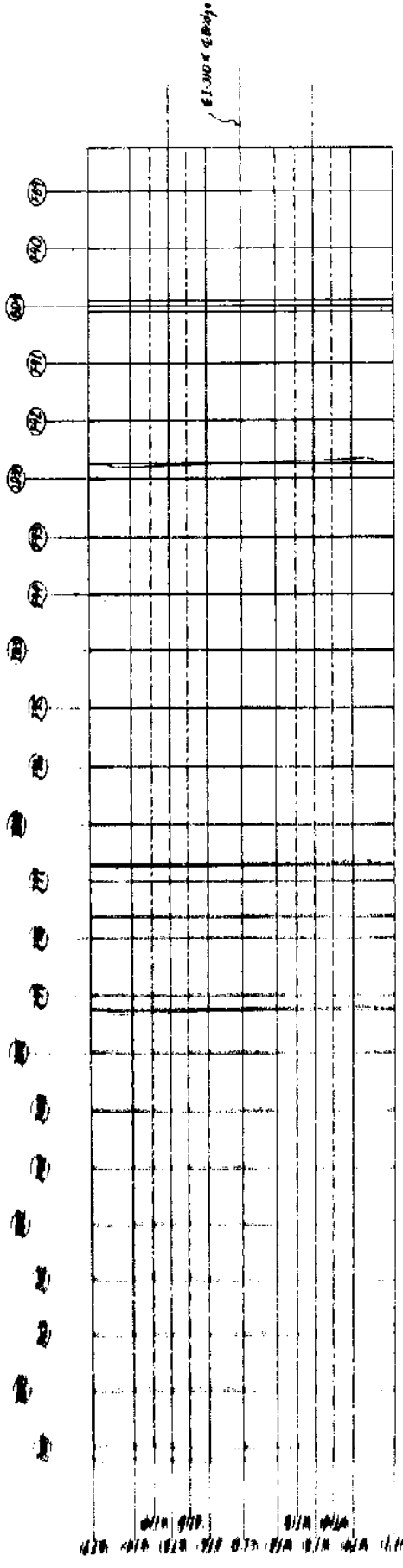
NO.	DATE	BY	CHKD BY	SCALE
1	1-1-71	M. D. D.		

DESIGNED BY: M. D. D.
 DRAWN BY: M. D. D.
 CHECKED BY: M. D. D.
 APPROVED BY: M. D. D.

NO. 2 SHOP ASSEMBLY DIAGRAM FOR BOX GIRDER (2's)

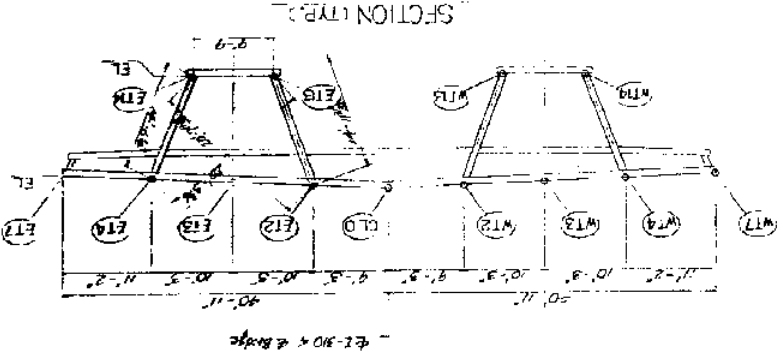
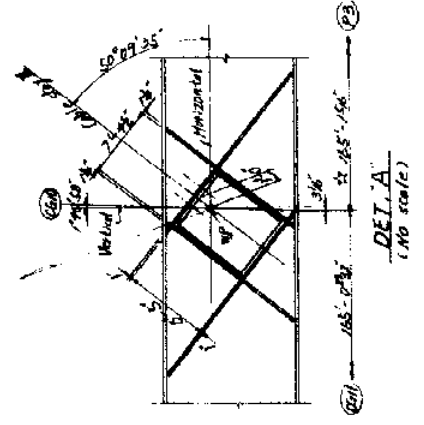


ELEVATION



PLAN

W.P.	X	Y	Z
1640	587'-13 1/2"	5945'-6"	12'-2 1/2"
	2795'-2 1/2"		2840'-3"



NOTES

1. For coordinates and elevations, see Day, No. S-382 & S-383.
2. For additional notes, see Day, No. S-387.

NO. 2 SHOP ASSEMBLY DIAGRAM FOR BOX GIRDER (2's)

DATE: 7-1-79

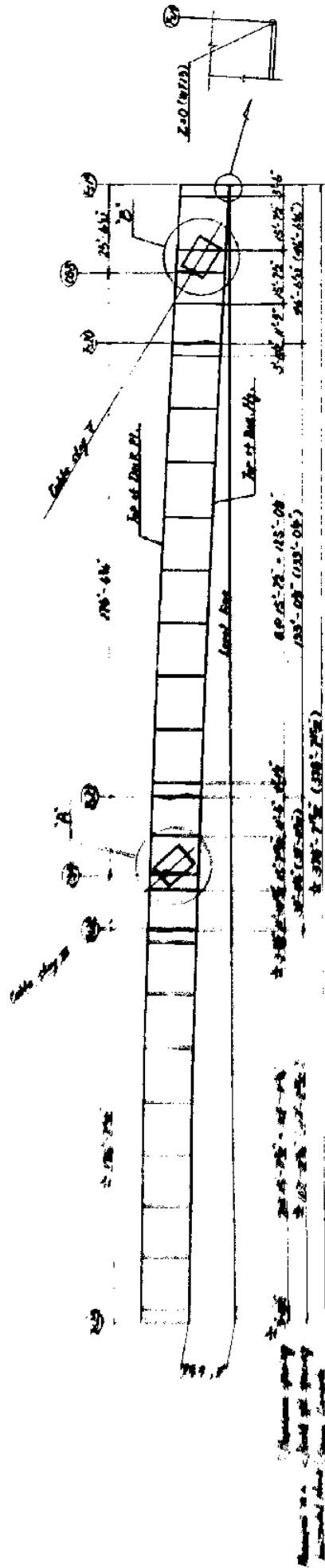
BY: [Signature]

CHECKED BY: [Signature]

DESIGNED BY: [Signature]

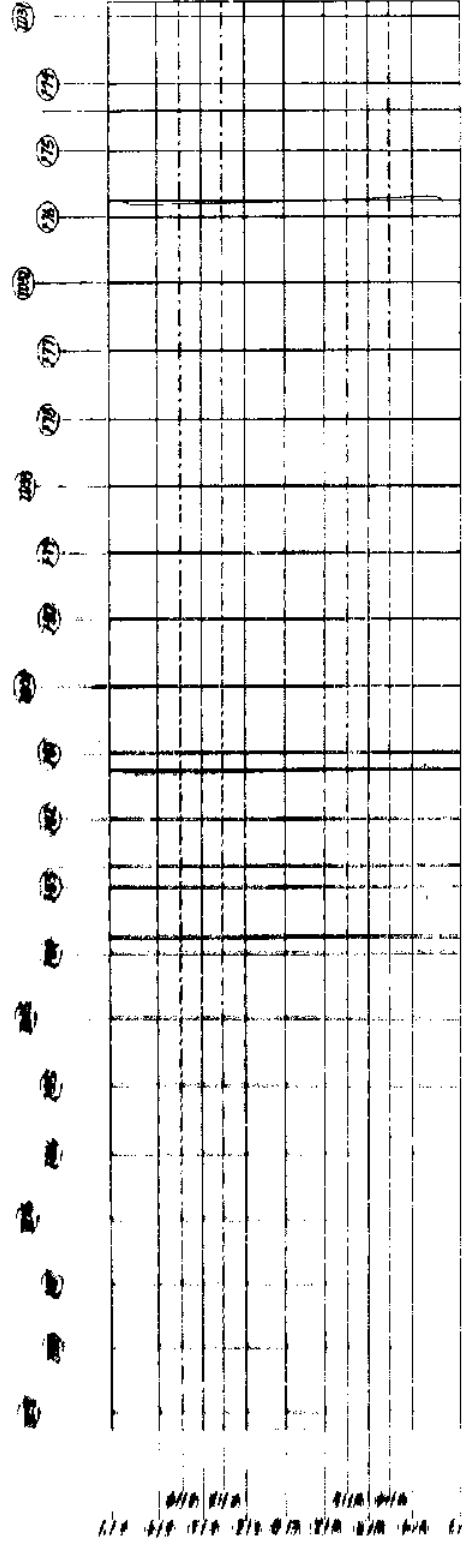
SCALE: 1" = 20'-0"

NO. 2 SHOP ASSEMBLY DIAGRAM FOR BOX GIRDER (3/5)

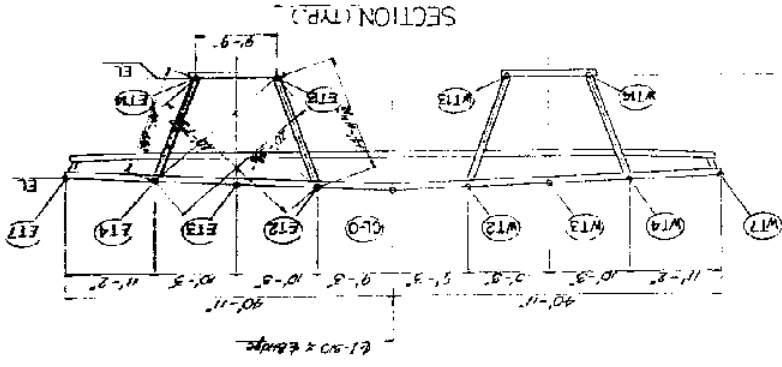


ELEVATION

Dimensions in parentheses give actual dimensions along the vertical center line.



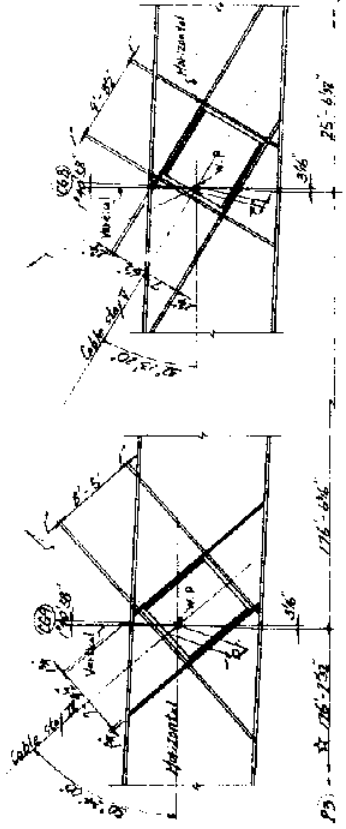
PLAN



NOTES:

- 1. For coordinates and elevations, see Proj. No. S-594 & S-595.
- 2. For additional notes, see Proj. No. S-387.

W.P.	X	Y	Z
W.P.	13-6	12-13	
CG9	13-6	12-13	
CG8	13-6	12-13	



DET. A
(No scale)

DET. B
(No scale)

TITLE	NO. 2 SHOP ASSEMBLY DIAGRAM FOR BOX GIRDER (3/5)
STATE OF MISSISSIPPI	DEPARTMENT OF TRANSPORTATION AND DEVELOPMENT
	OFFICE OF HIGHWAYS
	STATE ENGINEER
	MISSISSIPPI PARK SERVICE (L-1180)
	HEAVY MAINTENANCE DIVISION
DATE	NOV 15 1954
PREPARED BY	W. H. HARRIS
DESIGNED BY	W. H. HARRIS
CHECKED BY	W. H. HARRIS
APPROVED BY	W. H. HARRIS
SCALE	AS SHOWN

COORDINATES AND ELEVATIONS OF NO. 2 SHOP ASS. DIAGRAM (1/6)

Example:

Point	WT-7			WT-4			WT-3			WT-2			WT-14			WT-13			CL-0		
	X	Y	Z	X	Y	Z	X	Y	Z	X	Y	Z	X	Y	Z	X	Y	Z	X	Y	Z
624	110.0	110.0	110.0	110.0	110.0	110.0	110.0	110.0	110.0	110.0	110.0	110.0	110.0	110.0	110.0	110.0	110.0	110.0	110.0	110.0	110.0
606	110.0	110.0	110.0	110.0	110.0	110.0	110.0	110.0	110.0	110.0	110.0	110.0	110.0	110.0	110.0	110.0	110.0	110.0	110.0	110.0	110.0
623	110.0	110.0	110.0	110.0	110.0	110.0	110.0	110.0	110.0	110.0	110.0	110.0	110.0	110.0	110.0	110.0	110.0	110.0	110.0	110.0	110.0
624	110.0	110.0	110.0	110.0	110.0	110.0	110.0	110.0	110.0	110.0	110.0	110.0	110.0	110.0	110.0	110.0	110.0	110.0	110.0	110.0	110.0
625	110.0	110.0	110.0	110.0	110.0	110.0	110.0	110.0	110.0	110.0	110.0	110.0	110.0	110.0	110.0	110.0	110.0	110.0	110.0	110.0	110.0
626	110.0	110.0	110.0	110.0	110.0	110.0	110.0	110.0	110.0	110.0	110.0	110.0	110.0	110.0	110.0	110.0	110.0	110.0	110.0	110.0	110.0
627	110.0	110.0	110.0	110.0	110.0	110.0	110.0	110.0	110.0	110.0	110.0	110.0	110.0	110.0	110.0	110.0	110.0	110.0	110.0	110.0	110.0
628	110.0	110.0	110.0	110.0	110.0	110.0	110.0	110.0	110.0	110.0	110.0	110.0	110.0	110.0	110.0	110.0	110.0	110.0	110.0	110.0	110.0
629	110.0	110.0	110.0	110.0	110.0	110.0	110.0	110.0	110.0	110.0	110.0	110.0	110.0	110.0	110.0	110.0	110.0	110.0	110.0	110.0	110.0
630	110.0	110.0	110.0	110.0	110.0	110.0	110.0	110.0	110.0	110.0	110.0	110.0	110.0	110.0	110.0	110.0	110.0	110.0	110.0	110.0	110.0
631	110.0	110.0	110.0	110.0	110.0	110.0	110.0	110.0	110.0	110.0	110.0	110.0	110.0	110.0	110.0	110.0	110.0	110.0	110.0	110.0	110.0
632	110.0	110.0	110.0	110.0	110.0	110.0	110.0	110.0	110.0	110.0	110.0	110.0	110.0	110.0	110.0	110.0	110.0	110.0	110.0	110.0	110.0
633	110.0	110.0	110.0	110.0	110.0	110.0	110.0	110.0	110.0	110.0	110.0	110.0	110.0	110.0	110.0	110.0	110.0	110.0	110.0	110.0	110.0
634	110.0	110.0	110.0	110.0	110.0	110.0	110.0	110.0	110.0	110.0	110.0	110.0	110.0	110.0	110.0	110.0	110.0	110.0	110.0	110.0	110.0
635	110.0	110.0	110.0	110.0	110.0	110.0	110.0	110.0	110.0	110.0	110.0	110.0	110.0	110.0	110.0	110.0	110.0	110.0	110.0	110.0	110.0
636	110.0	110.0	110.0	110.0	110.0	110.0	110.0	110.0	110.0	110.0	110.0	110.0	110.0	110.0	110.0	110.0	110.0	110.0	110.0	110.0	110.0
637	110.0	110.0	110.0	110.0	110.0	110.0	110.0	110.0	110.0	110.0	110.0	110.0	110.0	110.0	110.0	110.0	110.0	110.0	110.0	110.0	110.0
638	110.0	110.0	110.0	110.0	110.0	110.0	110.0	110.0	110.0	110.0	110.0	110.0	110.0	110.0	110.0	110.0	110.0	110.0	110.0	110.0	110.0
639	110.0	110.0	110.0	110.0	110.0	110.0	110.0	110.0	110.0	110.0	110.0	110.0	110.0	110.0	110.0	110.0	110.0	110.0	110.0	110.0	110.0
640	110.0	110.0	110.0	110.0	110.0	110.0	110.0	110.0	110.0	110.0	110.0	110.0	110.0	110.0	110.0	110.0	110.0	110.0	110.0	110.0	110.0
641	110.0	110.0	110.0	110.0	110.0	110.0	110.0	110.0	110.0	110.0	110.0	110.0	110.0	110.0	110.0	110.0	110.0	110.0	110.0	110.0	110.0
642	110.0	110.0	110.0	110.0	110.0	110.0	110.0	110.0	110.0	110.0	110.0	110.0	110.0	110.0	110.0	110.0	110.0	110.0	110.0	110.0	110.0
643	110.0	110.0	110.0	110.0	110.0	110.0	110.0	110.0	110.0	110.0	110.0	110.0	110.0	110.0	110.0	110.0	110.0	110.0	110.0	110.0	110.0
644	110.0	110.0	110.0	110.0	110.0	110.0	110.0	110.0	110.0	110.0	110.0	110.0	110.0	110.0	110.0	110.0	110.0	110.0	110.0	110.0	110.0

NOTES:
 1. For details of line no. cut line no. (location) and X, Y, Z, see Day No. 5-587
 2. Unit:
 upper column: foot inch } see example as above
 lower column: mm }

COORDINATES AND ELEVATIONS OF NO. 2 SHOP ASS. DIAGRAM (1/6)

DATE: 11/15/54
 DRAWN BY: J. J. ...
 CHECKED BY: ...
 APPROVED BY: ...

COORDINATES AND ELEVATIONS OF NO. 2 SHOP ASS. DIAGRAM (248)

240

Example:
 - - - - - 0'-0.00'
 - - - - - 5.00'

Point	E1-0			E1-1			E1-2			E1-3			E1-4			E1-7			E1-13			E1-14		
	X	Y	Z	X	Y	Z	X	Y	Z	X	Y	Z	X	Y	Z	X	Y	Z	X	Y	Z	X	Y	Z
F101	1100.0	1000.0	1000.0	1100.0	1000.0	1000.0	1100.0	1000.0	1000.0	1100.0	1000.0	1000.0	1100.0	1000.0	1000.0	1100.0	1000.0	1000.0	1100.0	1000.0	1000.0	1100.0	1000.0	1000.0

TITLE: COORDINATES AND ELEVATIONS OF NO. 2 SHOP ASS. DIAGRAM (248)

DEPARTMENT OF TRANSPORTATION AND AIRCRAFT

PROJECT: ...

MANAGED BY: ...

CHIEF IN CHARGE: ...

DRAWN BY: ...

NOTES:

- For details of line no. cut line no. (location) and X, Y, Z, see page No. 5-387.
- Unit: Upper column: foot inch / see example as shown. Lower column: mm.