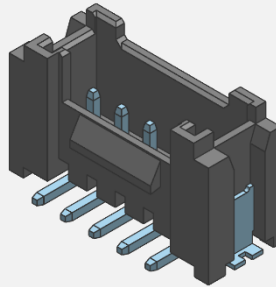
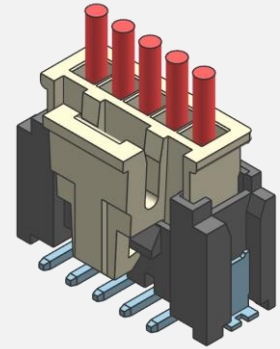


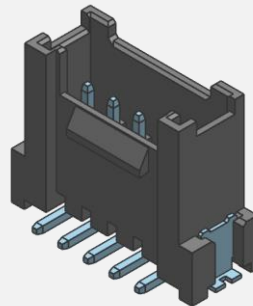
SMH200-NN



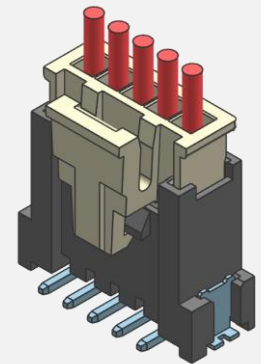
SMW200-HNNG



Mating View



SMW200-HNNG3



Mating View

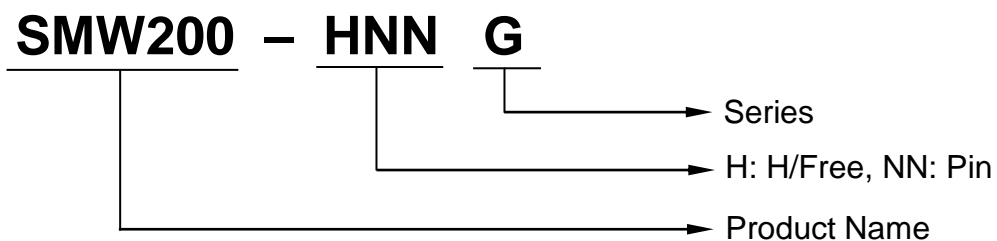
□ Feature

1. This Product is a Wire to board Connector
2. Product Height is 10.0mm , 14.10mm
3. This Connector Type is Vertical
4. Uses this connector in Reflow soldering
5. The product is the G series integrated catalog

□ Product Specification

Item	Specification
Operating Voltage	AC/DC 250V
Current Rating	AC/DC 3A
Operating Temperature	-25°C ~ +85°C
Insulation resistance	1000MΩ
Withstanding voltage	No flash over and no physical damage
Contact resistance	30mΩ MAX
Durability	Contact Resistance : 50mΩ MAX
Vibration	1) Contact Resistance : 50mΩ MAX 2) Discontinue : 1μsec MAX

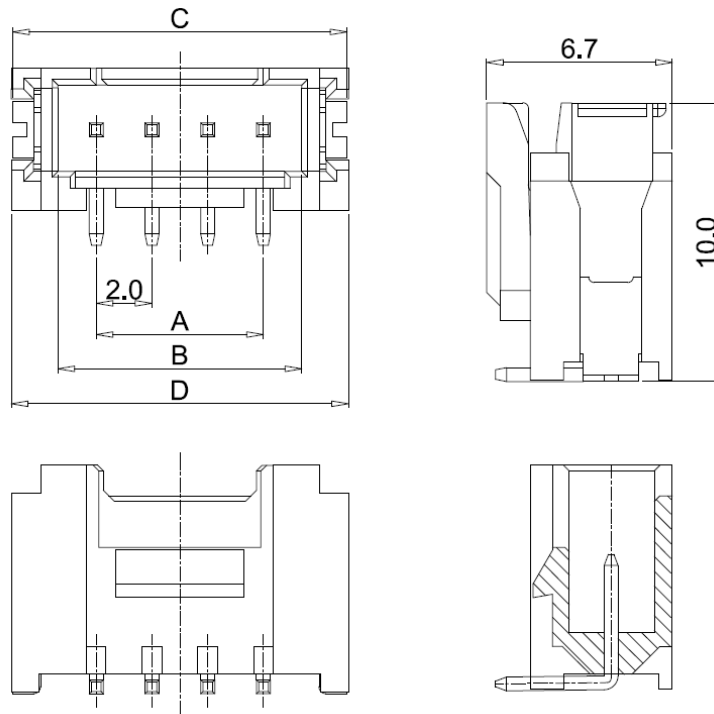
□ Ordering Code



□ Material / Plating

Part	Material	Plating / Color
Wafer	LCP	Natural
Pin	Copper Alloy	Sn Plating
Hook	Copper Alloy	Sn Plating
Cover	PA계열	Black
Housing	PA계열	White
Terminal	Copper Alloy	Sn Plating

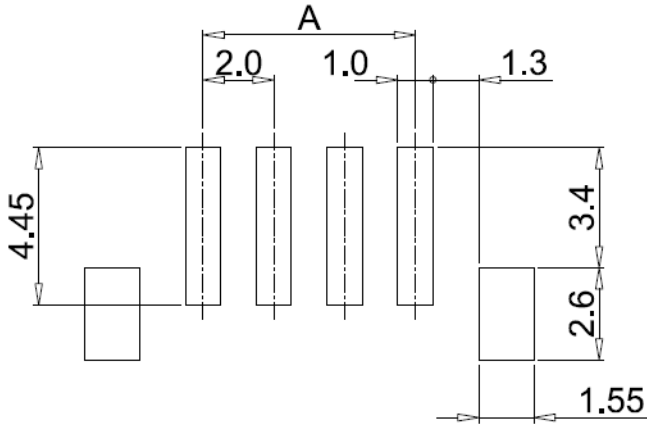
□ Connector Dimension/ SMAW200-HNN G



Part No.	Pin	A	B	C	D
SMW200-H02G	2	2.0	4.7	7.9	8.0
SMW200-H04G	4	6.0	8.7	11.9	12.0
SMW200-H06G	6	10.0	12.7	15.9	16.0
SMW200-H08G	8	14.0	16.7	19.9	20.0
SMW200-H10G	10	18.0	20.7	23.9	24.0
SMW200-H12G	12	22.0	24.7	27.9	28.0
SMW200-H14G	14	26.0	28.7	31.9	32.0
SMW200-H16G	16	30.0	32.7	35.9	36.0

※ Contact Yeonho Sales representative if considering use of non-specified circuits

□ PCB Pattern Dimension/ SMAW200-HNN G

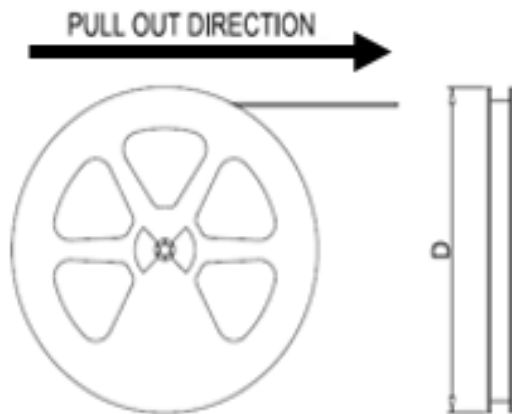
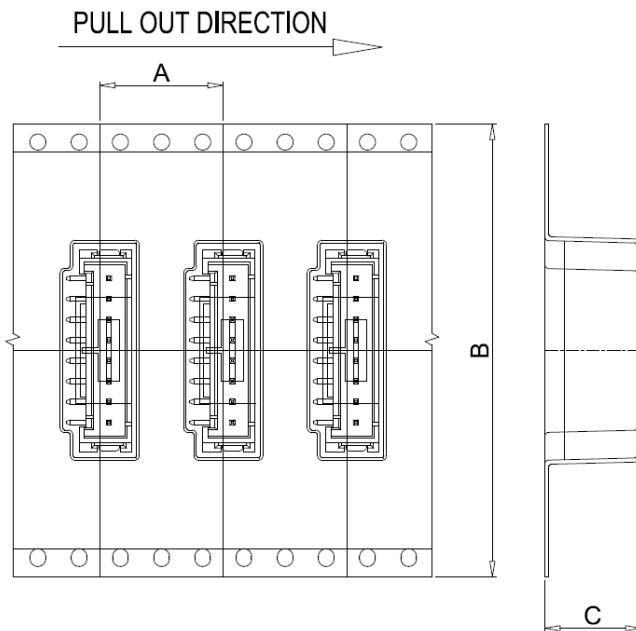
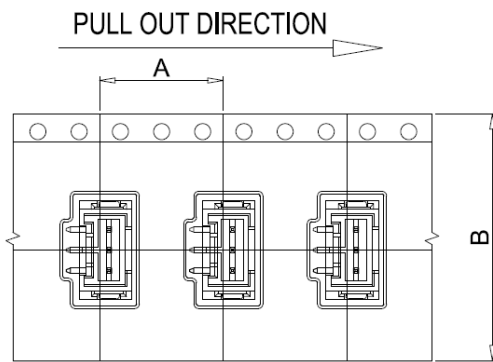


Pin	A
2	2.0
4	6.0
6	10.0
8	14.0
10	18.0
12	22.0
14	26.0
16	30.0

SMAW200-HNN G

※ Contact Yeonho Sales representative if considering use of non-specified circuits

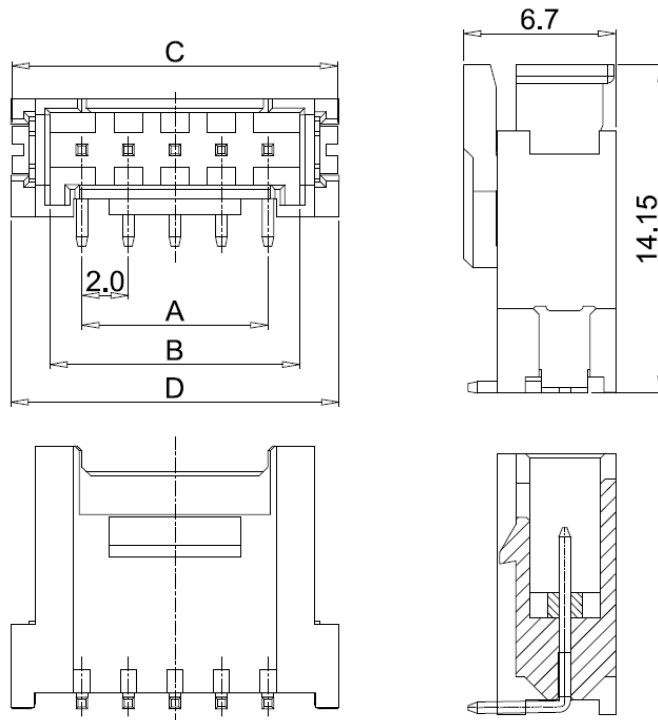
□ Packing Dimension/ SMAW200-HNN G



Pin	A	B	C	D
2	12	24	9.35	Φ380
4	12	24	9.35	Φ380
6	12	24	9.35	Φ380
8	12	32	9.35	Φ380
10	12	44	9.35	Φ380
12	12	44	9.35	Φ380
14	12	56	9.35	Φ380
16	12	56	9.35	Φ380

※ Contact Yeonho Sales representative if considering use of non-specified circuits

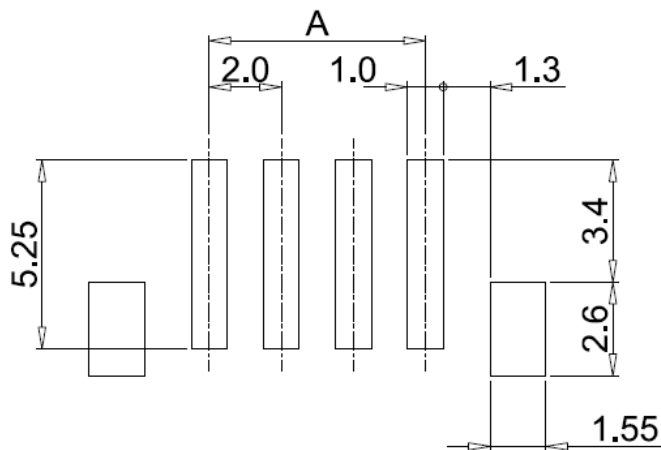
□ Connector Dimension/ SMW200-HNN G3



Part No.	Pin	A	B	C	D
SMW200-H02G3	2	2.0	4.7	7.9	8.0
SMW200-H04G3	4	6.0	8.7	11.9	12.0
SMW200-H06G3	6	10.0	12.7	15.9	16.0
SMW200-H08G3	8	14.0	16.7	19.9	20.0
SMW200-H10G3	10	18.0	20.7	23.9	24.0
SMW200-H12G3	12	22.0	24.7	27.9	28.0
SMW200-H14G3	14	26.0	28.7	31.9	32.0
SMW200-H16G3	16	28.0	30.7	33.9	34.0

※ Contact Yeonho Sales representative if considering use of non-specified circuits

□ PCB Pattern Dimension/ SMW200-HNN **G3**

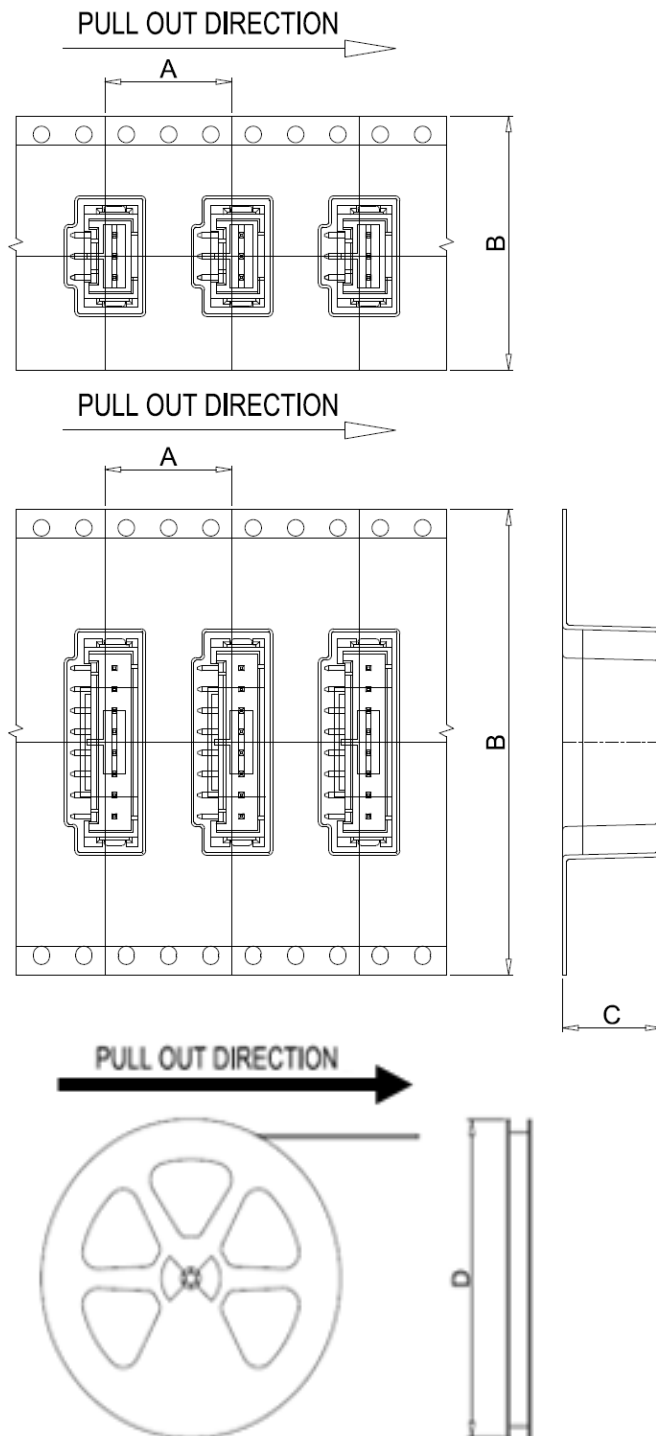


Pin	A
2	2.0
4	6.0
6	10.0
8	14.0
10	18.0
12	22.0
14	26.0
16	30.0

SMW200-HNN **G3**

※ Contact Yeonho Sales representative if considering use of non-specified circuits

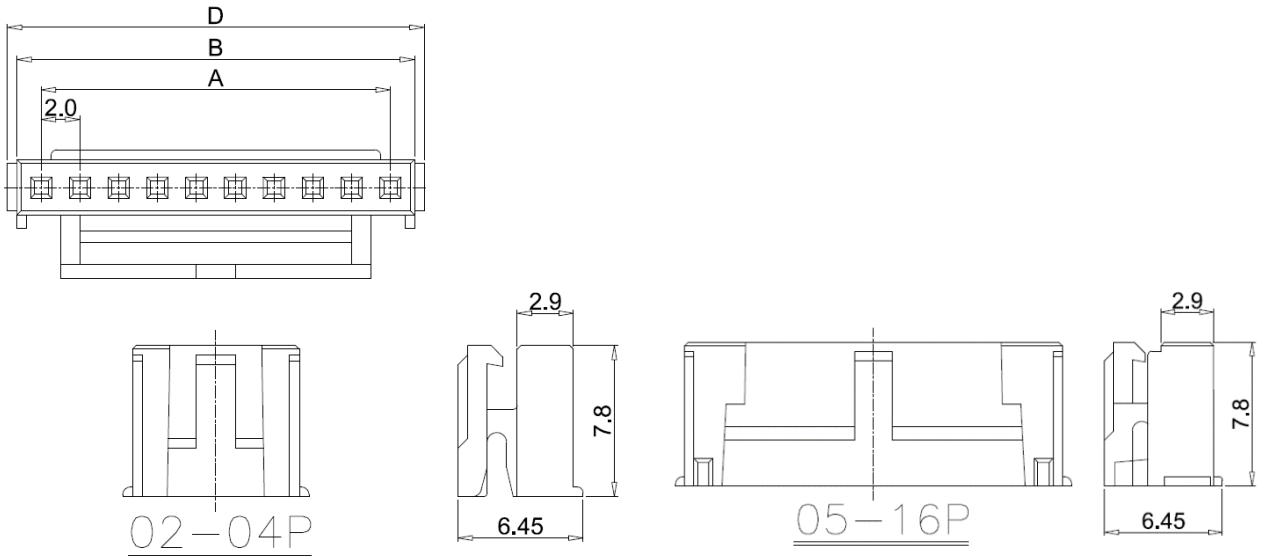
□ Packing Dimension/ SMW200-HNN G3



Pin	A	B	C	D
2	12	24	9.35	Φ380
3	12	24	9.35	Φ380
4	12	24	9.35	Φ380
5	12	24	9.35	Φ380
6	12	24	9.35	Φ380
8	12	32	9.35	Φ380
9	12	44	9.35	Φ380
10	12	44	9.35	Φ380
11	12	44	9.35	Φ380
12	12	44	9.35	Φ380
13	12	56	9.35	Φ380
14	12	56	9.35	Φ380
15	12	56	9.35	Φ380

※ Contact Yeonho Sales representative if considering use of non-specified circuits

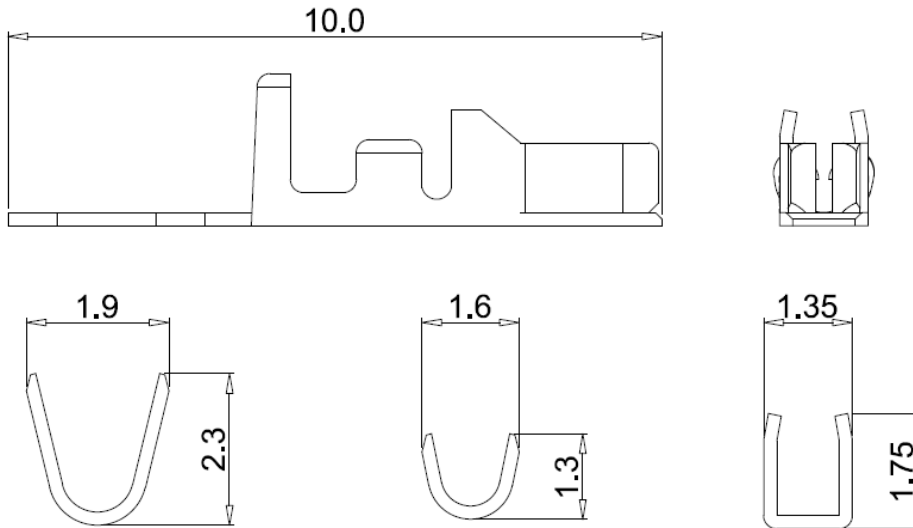
□ Connector Dimension/ SMH200-NN



Part No.	Pin	A	B	D
SMH200-02	2	2.0	4.6	5.6
SMH200-04	4	6.0	8.6	9.6
SMH200-06	6	10.0	12.6	13.6
SMH200-08	8	14.0	16.6	17.6
SMH200-10	10	18.0	20.6	21.6
SMH200-12	12	22.0	24.6	25.6
SMH200-14	14	26.0	30.6	29.6
SMH200-15	15	30.0	34.6	33.6

※ Contact Yeonho Sales representative if considering use of non-specified circuits

□ Connector Dimension/ YST200



Part Name	Housing Name	Plating	Wire Size
YST200	SMH200-NN	Sn-Plating	AWG #24~#26

※ Contact Yeonho Sales representative if considering use of non-specified circuits