

CONTINENTAL[®] AIRCRAFT ENGINE

service bulletin

M81-16

Technical Portions Are
FAA-DER Approved

27 July, 1981

TO: Aircraft Manufacturers, Distributors, Dealers, Engine Overhaul Facilities,
Owners and Operators of Teledyne Continental Motors' Aircraft Engines.

SUBJECT: TURBOCHARGER CENTER HOUSINGS

MODELS
AFFECTED: TSIO-470, TSIO-520, GTSIO-520 AND TSIO-360A, B, C, D, & H Engines.

Gentlemen:

The attached Airesearch Service Letter is offered for you information and compliance as applicable.



Service Letter

SUBJECT: AIRCRAFT TURBOCHARGER CENTER HOUSINGS

A. EFFECTIVITY

All AiResearch aircraft turbochargers except model TE0659, AID P/N 406610-5, Cessna P/N C295001-0101. (Changeover subject of separate Service Letter.)

B. REASON

Previous pin design has been superseded and is no longer available as spare parts.

C. DESCRIPTION

Use of the previous pin design (solid groove pin) in new production turbochargers has been discontinued. Present center housing and solid groove pins may be reused if in serviceable condition. The new design (spring) pin requires the use of a new center housing on all units in Para F.

D. COMPLIANCE

Optional at the time of overhaul, if in serviceable condition as determined by overhaul inspection criteria.

E. ACCOMPLISHMENT INSTRUCTIONS

1. Discard used center housing assy.
2. Order new center housing and pins per Para F.
3. Install pins as follows:
 - a. Install spring pins as shown in Fig. 1, oriented so that slot in pin is located radially outward within 15° of the radial line.
 - b. Using tool (AiResearch P/N 478199) install pin so that height is .075 - .080 above machined surface, as shown in Fig. 2.

F. MATERIAL INFORMATION

Order center housing corresponding to your turbocharger part number as indicated below. Also, order two each P/N 400705 spring pins, per center housing; order tool AID P/N 478199 as required.

<u>TURBO MODEL</u>	<u>AID P/N</u>	<u>OEM P/N</u>	<u>CENT HSG P/N</u>
T1106	404350-1	629844-1	409303
T1107	404360-4	630374-4	409303
TC1108	404460-2	77692	*409183-1
T1112	404830-1	73895	409303



OVERHAUL MANUAL

F. MATERIAL INFORMATION (Continued)

<u>TURBO MODEL</u>	<u>AID P/N</u>	<u>OEM P/N</u>	<u>CENT HSG P/N</u>
T1823	406110-5	LW11968	441320-1
T1823	406110-7	LW13309	441320-2
TE0655	406330-1	406330-1	441320-3
TE0659	406610-1	632729-1	441320-3
TE0659	406610-3	406610-3	441320-3
TE0659	406610-15	LW13112	441320-4
TE0659	406610-18	C295001-0103	441320-5
TE0659	406610-19	632729-10	441320-4
TE0659	406610-20	LW12689	441320-4
TE0659	406610-21	LW12950	441320-4
TE0659	406610-22	C295001-0108	441320-5
TE0659	406610-25	632729-11	441320-4
TE0659	406610-26	LW15749	441320-4
TE0659	406610-27	406610-27	441320-4
TE0659	406610-28	632729-12	441320-4
TE0659	406610-29	632729-13	441320-4
TE0657	406970-1	C295001-0102	441320-5
TH0867	406990-4	633274-4	441320-6
T1879	407540-3	LW13310	441320-7
T18A21	407800-3	LW13234	441320-7
TH08A67	407810-1	635630	441320-8
TE0656	408250-4	4885.1	441320-5
T18A44	408590-2	635034-2	441320-9
T18A44	408590-12	635034-12	441320-9
TH0871	408610-1	637374-1	441320-6
TE0659	409072	641541	441320-4
TH08A60	409170-1	LW12463	441320-10
TH08A68	409680-1	640327-1	441320-4
TH08A68	409680-11	640327-11	441320-4
TA0401	465292-1	C295001-0301	441320-11
TA0401	465292-2	C295001-0304	441320-11
TA0401	465292-4	642518-4	441320-11
TA0402	465398-2	LW16264	441320-11
TH08A70	465930-2	641672-2	441320-10
TH08A70	465930-3	641672-3	441320-10
TA0301	465448-1	642760	441320-10
TH08A69	465680-1	LW13897	441320-10
TH08A69	465680-3	C295001-0201	441320-10

* 409183-1 is a center housing and turbine shroud assembly. The new spring pins are installed in the assembly.

Required parts are available through normal O.E.M. channels.

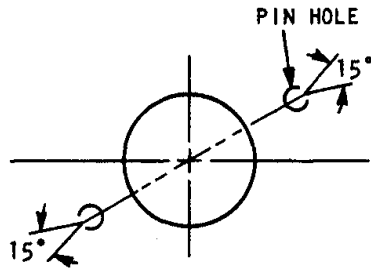


Figure 1

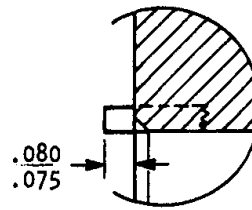


Figure 2