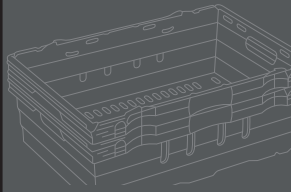




CONTAINER CATALOGUE

materials handling and
packaging solutions



STORAGE DESIGN LIMITED

Tel: 01446 772614

Fax: 01446 774770

info@storage-design.co.uk

www.storage-design.co.uk

Ref: 08LMH/SDL



stack nest with bale arm



180° stack nest

Stack nest containers – the industry standard stacking and nesting containers developed to meet the challenging requirements of many industries.

○ product story

A returnable transit packaging product so thoughtfully designed that some major retailers choose to use it as a display case in-store as well as throughout the supply chain. The range is broad but is typified by the Maxinest design, which is regarded as the industry standard for the last 15 years and has become an indispensable component of any sophisticated supply chain.



○ key features and benefits

- Space efficient
- Various heights and footprints
- Full and half size trays
- Multiple stack nest configurations
- Can be used from supplier to store, minimising product handling and potential to damage goods.

Attached lid containers – containers with built-in tamper-proof features to deter the theft of high risk or high value goods in transit.

Based on the simple principle that out of sight is out of mind, we designed a range of containers with attached lids that can be fitted with tamper-deterrent security seals. By keeping high risk or high value items hidden from view, thefts and losses can be reduced whenever they are being stored, handled or transported.



- Stacking and nesting... save cost in reverse logistics
- Super-tough moulding
- Maximum maneuverability
- Security tags and/or seals can be added
- Drastically reduce content loss.



bread basket



attached lid containers

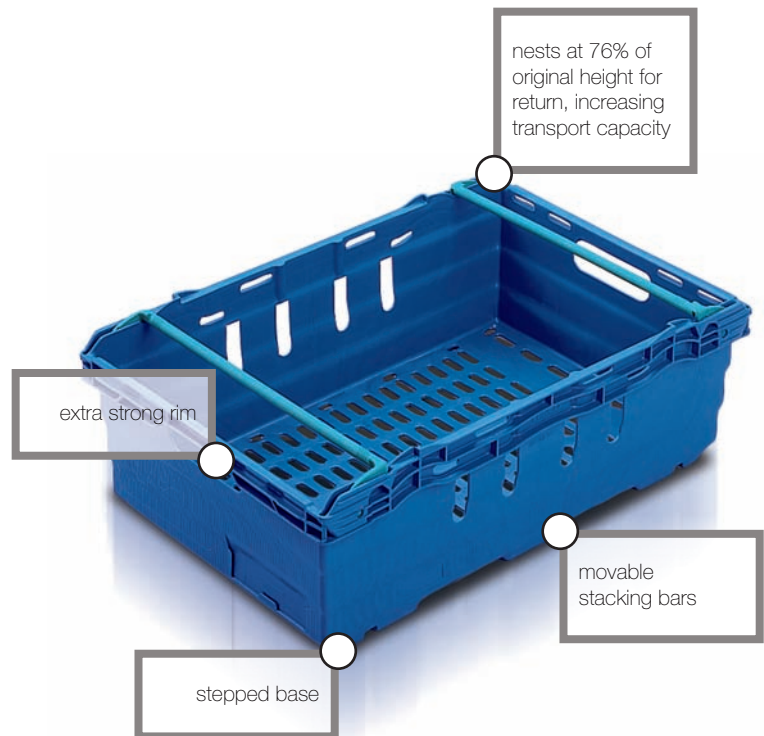
○ maxinest®

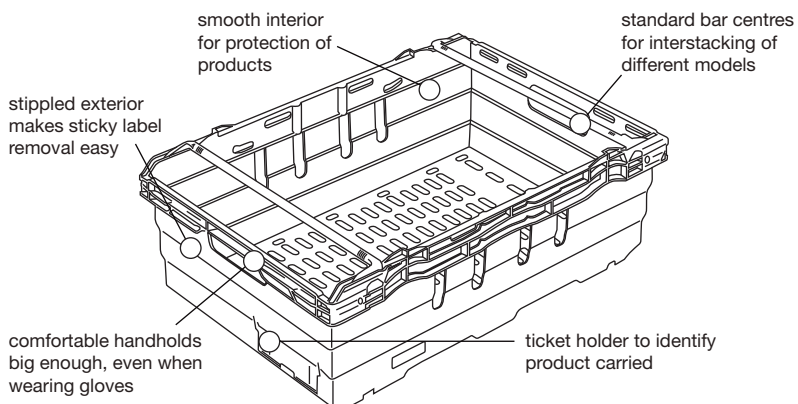
Our famous Maxinest containers were developed following close observation of how the food and grocery supply chain worked and designed in consultation with major retailers.



The original design was registered in 1995 and has now grown into a range of 11 variants, including the latest Mushroom Tray in 2007.

No other stacking is more accommodating. Maxinest fits with all standard distribution and display cabinet arrangements and works seamlessly with the latest filling, weighing, handling and pallet storage methods. It can also be fitted with LINPAC Allibert RFID tagging technology.





“Maxinest containers ensure that quality of produce is maintained throughout the deliveries to our shops.” *Fritos Blanco*

○ SN431302

Small size stack and nest container. Part of the Maxinest range, with a swing bar action which will give two internal working heights.

suitable for:

- produce distribution and display



Technical specification

Ext.Top Dim.	400 x 300 x 135mm
Int.Base Dim.	365 x 261 x 100mm
Load	81kg on base tray
Capacity	10 litres
Weight	0.8kg
Material	Polypropylene
Colour	Blue



○ SN431802

Small size stack and nest container. Part of the Maxinest range, with a swing bar action which will give two internal working heights.

suitable for:

- produce distribution and display



Technical specification

Ext.Top Dim.	400 x 300 x 180mm
Int.Base Dim.	364 x 264 x 144mm
Load	81kg on base tray
Capacity	15 litres
Weight	1kg
Material	Polypropylene
Colour	Blue

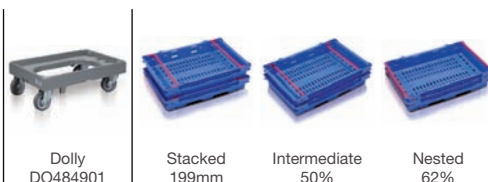


○ DH641002

Part of the Maxinest range, with a swing bar action which will give two internal working heights.

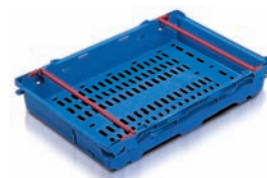
suitable for:

- prepacked meats
- prepacked fish
- variety of salad products



Technical specification

Ext.Top Dim.	600 x 400 x 106mm
Int.Base Dim.	552 x 352 x 50mm
Load	162kg on base tray
Capacity	16 and 10 litres
Weight	1.2kg
Material	Polypropylene
Colour	Blue

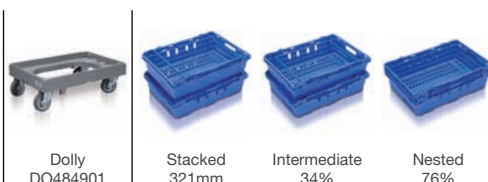


○ DH641602

Part of the Maxinest range, with a swing bar action which will give two internal working heights.

suitable for:

- variety of salad products
- fresh vegetables



Technical specification

Ext.Top Dim.	600 x 400 x 167mm
Int.Base Dim.	548 x 352 x 110mm
Load	162kg on base tray
Capacity	28 and 21 litres
Weight	1.5kg
Material	Polypropylene
Colour	Blue



○ SN641902

Part of the Maxinest range, with a swing bar action for stacking and nesting.

suitable for:

- prepacked meats
- prepacked fish
- variety of salad products



Dolly
DO484901



Double Dolly
DO795904



Stacked
385mm



Nested
76%

Technical specification

Ext.Top Dim.	600 x 400 x 199mm
Int.Base Dim.	546 x 349 x 172mm
Load	162kg on base tray
Capacity	35 litres
Weight	1.7kg
Material	Polypropylene
Colour	Blue



○ SN641907

Part of the Maxinest range, with a swing bar action for stacking and nesting.

suitable for:

- housewares
- prepacked meats
- prepacked fish



Dolly
DO484901



Double Dolly
DO795904



Stacked
385mm



Nested
76%

Technical specification

Ext.Top Dim.	600 x 400 x 199mm
Int.Base Dim.	546 x 349 x 172mm
Load	162kg on base tray
Capacity	35 litres
Weight	1.8kg
Material	Polypropylene
Colour	Blue



○ DH400002

Part of the Maxinest range, with a conveyor base and a swing bar action which will give three internal working heights.

suitable for:

- cool chain distribution
- fresh vegetables
- housewares



Stacked
385mm



Intermediate
33%



54%



Nested
76%

Technical specification

Ext.Top Dim.	600 x 400 x 199mm
Int.Base Dim.	546 x 347 x 31mm
Load	162kg on base tray
Capacity	35,26 and 17 litres
Weight	2kg
Material	Polypropylene
Colour	Blue



○ SN642402

Part of the Maxinest range, with a swing bar action which will give two internal working heights.

suitable for:

- prepacked meats
- home shopping
- variety of salad products



Dolly
DO484901



Double Dolly
DO795904



Stacked
493mm



Nested
75%

Technical specification

Ext.Top Dim.	600 x 400 x 253mm
Int.Base Dim.	548 x 352 x 226mm
Load	162kg on base tray
Capacity	44 litres
Weight	2kg
Material	Polypropylene
Colour	Blue



○ SN652402

Part of the Maxinest range, with a swing bar action for stacking and nesting. Reinforced heavy-duty base for use with automated handling.

suitable for:

- prepacked meats
- home shopping
- variety of salad products



Dolly
DO484901



Double Dolly
DO795904



Stacked
493mm



Nested
75%

Technical specification

Ext.Top Dim.	600 x 400 x 253mm
Int.Base Dim.	548 x 352 x 226mm
Load	162kg on base tray
Capacity	44 litres
Weight	2.3kg
Material	Polypropylene
Colour	Grey



○ SN642602

Part of the Maxinest range, with a swing bar action which will give two internal working heights.

suitable for:

- prepacked meats
- home shopping
- variety of salad products



Dolly
DO484901



Double Dolly
DO795904



Stacked
521mm



Nested
75%

Technical specification

Ext.Top Dim.	600 x 400 x 267mm
Int.Base Dim.	548 x 352 x 240mm
Load	162kg on base tray
Capacity	46 litres
Weight	2.1kg
Material	Polypropylene
Colour	Blue





smooth interior for protection of products

perforations allow good air circulation

dual height available in some sizes

ideal for temperature controlled environments

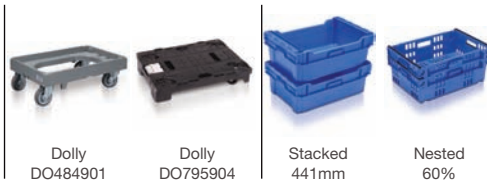
A comprehensive range of stack nest containers offer versatility and save space.

○ SN642202

Stack and nest container using plastic bale arms to maximise internal dimensions.

suitable for:

- prepacked meats
- fresh produce
- computer games



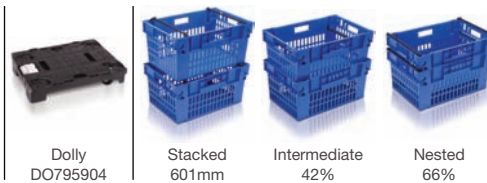
Technical specification

Ext. Top Dim.	600 x 400 x 225mm
Int. Base Dim.	525 x 347 x 200mm
Load Capacity	162kg on base tray
Capacity	38 litres
Weight	1.7kg
Material	Polypropylene
Colour	Blue



○ DH701802

The swing bar action will give three internal working heights.



Technical specification

Ext. Dim.	600 x 400 x 302mm
Int. Dim.	570 x 370 x 270mm
Load	18kg
Capacity	54 litres
Weight	2.1kg
Material	Polypropylene
Colour	Blue



○ DH701807

The swing bar action will give three internal working heights.



Technical specification

Ext. Dim.	600 x 400 x 302mm
Int. Dim.	570 x 370 x 270mm
Load	18kg
Capacity	54 litres
Weight	2.4kg
Material	Polypropylene
Colour	Blue



○ DH300002

Reinforced base for compatible use of conveyors and automated handling equipment.

suitable for:

- housewares
- textiles



Technical specification

Ext. Top Dim.	600 x 400 x 303mm
Int. Base Dim.	539 x 342 x 279mm
Load	180kg on base tray
Capacity	54 litres
Weight	2.6kg
Material	Polypropylene
Colour	Blue



○ DH643602

The swing bar action will give two internal working heights and base drain holes will prevent water retention.

suitable for:

- housewares
- clothing
- general distribution



Dolly
DO795904



Stacked
731mm



Intermediate
35%



Nestled
72%

Technical specification

Ext.Top Dim. 600 x 400 x 368mm
Int.Base Dim. 532 x 339 x 338mm
Load Capacity 180kg on base tray
Weight 2.2kg
Material Polypropylene
Colour Blue



○ DH643607

The swing bar action will give two internal working heights and base drain holes will prevent water retention.

suitable for:

- housewares
- clothing
- general distribution



Dolly
DO484901



Stacked
731mm



Intermediate
385mm



Nestled
76%

Technical specification

Ext.Top Dim. 600 x 400 x 368mm
Int.Base Dim. 532 x 339 x 338mm
Load Capacity 180kg on base tray
Weight 2.6kg
Material Polypropylene
Colour Blue



○ DH740002

The swing bar action will give two internal working heights.

suitable for:

- meat distribution
- fresh vegetables



Dolly
DO867701



Stacked
377mm



Intermediate
43%



Nestled
64%

Technical specification

Ext.Top Dim. 691 x 441 x 194mm
Int.Base Dim. 635 x 391 x 168mm
Load Capacity 200kg on base tray
Weight 2kg
Material Polypropylene
Colour Blue



○ 11214

French bread tray, stacks on metal bale arms. Ventilated base and sides.



Stacked
1350mm



Nestled
69%

Technical specification

Ext. Dim. 720 x 500 x 685mm
Int. Dim. 604 x 404 x 607mm
Capacity 180 litres
Weight 5.84kg
Material Polypropylene
Colour Yellow



○ 11215

French bread tray, stacks on metal bale arms. Ventilated base and sides.



Stacked
1620mm



Nestled
74%

Technical specification

Ext. Dim. 720 x 500 x 820mm
Int. Dim. 604 x 404 x 742mm
Capacity 215 litres
Weight 6.35kg
Material Polypropylene
Colour Ivory



○ 10060 / SN006008

Metal stacking bars.



Stacked
656mm



Nestled
65%

Technical specification

Ext. Dim. 630 x 495 x 290mm
Int. Dim. 560 x 415 x 265mm
Capacity 63 litres
Weight 2.75kg
Material Polypropylene
Colour Red, green



○ SN704608

Six drainage holes in base.
Metal stacking bars.



Dolly
DO684301



Lid
61075 /
LI610704



Stacked
685mm



Nested
78%

Technical specification

Ext. Dim.	710 x 460 x 350mm
Int. Dim.	599 x 378 x 310mm
Capacity	75 litres
Weight	4.2kg
Material	Polypropylene
Colour	Grey



○ 10130 / SN013008

Minimum order item.
Eight drainage holes in base.
Metal stacking bars.



Stacked
668mm

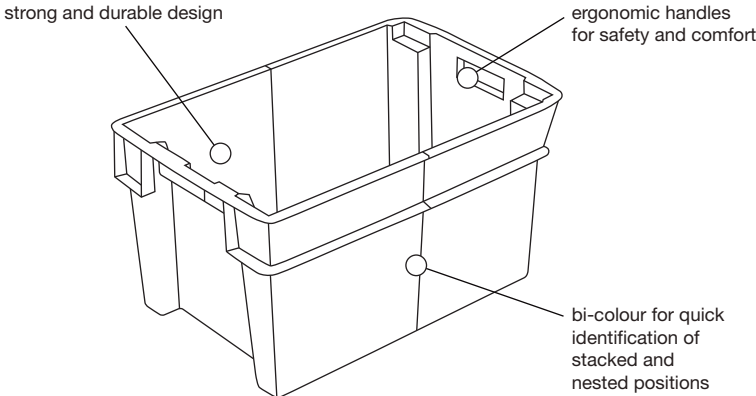


Nested
75%

Technical specification

Ext. Dim.	1160 x 480 x 342mm
Int. Dim.	1000 x 370 x 322mm
Capacity	130 litres
Weight	5.6kg
Material	Polypropylene
Colour	Grey

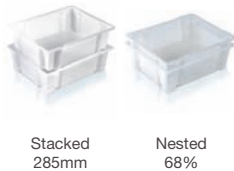




Containers that stack and nest through 180° rotation.

○ SN111104

One piece moulded 180° turn stacking and nesting container.
suitable for:
• food processing
• meat products



Stacked 285mm
Nested 68%

Technical specification	
Ext.Top Dim.	510 x 400 x 150mm
Int.Base Dim.	410 x 300 x 130mm
Load	90kg on base tray
Capacity	23 litres
Weight	1.1kg
Material	Polypropylene
Colour	Natural



○ SN700601

Stack and nest container. Lid is perforated ref. no. LI151401.
suitable for:
• distribution of 'day old chicks'



Dolly DO484901
Lid LI151401

Stacked 235mm
Nested 50%

Technical specification	
Ext.Top Dim.	600 x 400 x 120mm
Int.Base Dim.	268 x 362 x 111 x 2 off
Load	82kg on base tray
Capacity	22 litres
Weight	1.2kg
Material	Polypropylene
Colour	Black



○ SN600004

Stack and nest container by 180° turn method. Fully solid with clean lines.
suitable for:
• parts storage
• food preparation



Dolly DO484901

Stacked 352mm
Nested 68%

Technical specification	
Ext.Top Dim.	595 x 390 x 185mm
Int.Base Dim.	460 x 320 x 160mm
Load	112kg on base tray
Capacity	24 litres
Weight	1.3kg
Material	Polypropylene
Colour	Red



○ SN599004

Double sized stack and nest container by 180° turn method. Fully solid with clean lines.
suitable for:
• handling of textiles



Dolly DO795904

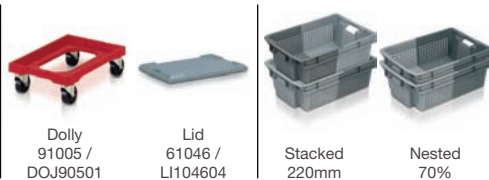
Stacked 721mm
Nested 78%

Technical specification	
Ext.Top Dim.	800 x 597 x 370mm
Int.Base Dim.	650 x 490 x 350mm
Load	192kg on base tray
Capacity	110 litres
Weight	4.6kg
Material	Polypropylene
Colour	Red



○ 11018 / SN101804

Containers securely stack when loaded and nested, by turning through 180°, to save space when not in use. Bi-colour design clearly identifies stacking and nesting positions. Solid sides and base.



Dolly
91005 /
DOJ90501

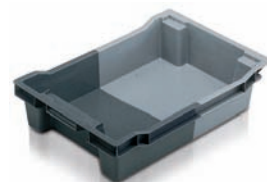
Lid
61046 /
LH104604

Stacked
220mm

Nested
70%

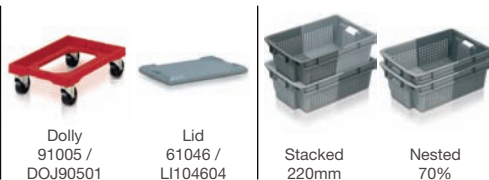
Technical specification

Ext. Dim. 600 x 400 x 117mm
Int. Dim. 458 x 338 x 102mm
Capacity 18 litres
Weight 1.18kg
Material HDPE
Colour Grey/light grey



○ 11020 / SN102001

Containers securely stack when loaded and nested, by turning through 180°, to save space when not in use. Bi-colour design clearly identifies stacking and nesting positions. Ventilated sides and base.



Dolly
91005 /
DOJ90501

Lid
61046 /
LH104604

Stacked
220mm

Nested
70%

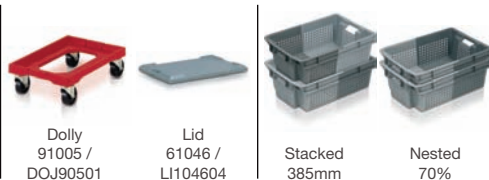
Technical specification

Ext. Dim. 600 x 400 x 117mm
Int. Dim. 458 x 338 x 102mm
Capacity 18 litres
Weight 1.09kg
Material HDPE
Colour Grey/light grey



○ 11032 / SN110305

Containers securely stack when loaded and nested, by turning through 180°, to save space when not in use. Bi-colour design clearly identifies stacking and nesting positions. Solid sides and base.



Dolly
91005 /
DOJ90501

Lid
61046 /
LH104604

Stacked
385mm

Nested
70%

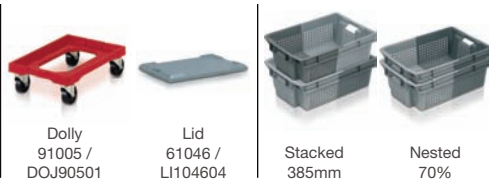
Technical specification

Ext. Dim. 600 x 400 x 200mm
Int. Dim. 457 x 338 x 177mm
Capacity 32 litres
Weight 1.84kg
Material HDPE
Colour Grey/light grey,
grey/red



○ 11034 / SN110301

Containers securely stack when loaded and nested, by turning through 180°, to save space when not in use. Bi-colour design clearly identifies stacking and nesting positions. Ventilated sides and base.



Dolly
91005 /
DOJ90501

Lid
61046 /
LH104604

Stacked
385mm

Nested
70%

Technical specification

Ext. Dim. 600 x 400 x 200mm
Int. Dim. 457 x 338 x 177mm
Capacity 32 litres
Weight 1.6kg
Material HDPE
Colour Grey/light grey



○ 11035 / SNR13506

Containers securely stack when loaded and nested, by turning through 180°, to save space when not in use. Bi-colour design clearly identifies stacking and nesting positions. Solid base and ventilated sides.



Dolly
91005 /
DOJ90501

Lid
61046 /
LH104604

Stacked
385mm

Nested
70%

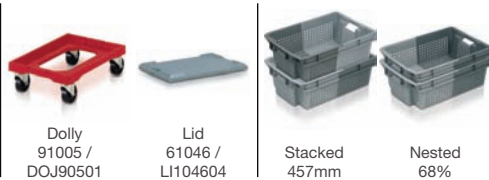
Technical specification

Ext. Dim. 600 x 400 x 200mm
Int. Dim. 457 x 338 x 177mm
Capacity 33 litres
Weight 1.71kg
Material HDPE
Colour Grey/light grey



○ 11037 / SN103701

Containers securely stack when loaded and nested, by turning through 180°, to save space when not in use. Ventilated sides and base.



Dolly
91005 /
DOJ90501

Lid
61046 /
LH104604

Stacked
457mm

Nested
68%

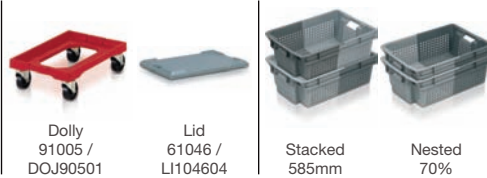
Technical specification

Ext. Dim. 600 x 400 x 236mm
Int. Dim. 460 x 340 x 205mm
Capacity 37 litres
Weight 1.64kg
Material HDPE
Colour Orange



○ 11051 / SN105105

Containers securely stack when loaded and nested, by turning through 180°, to save space when not in use. Bi-colour design clearly identifies stacking and nesting positions. Solid sides and base.



Dolly
91005 /
DOJ90501

Lid
61046 /
LH104604

Stacked
585mm

Nested
70%

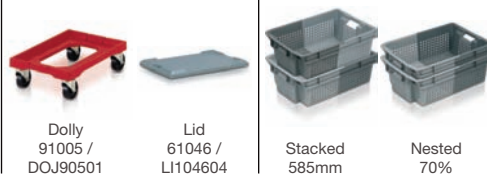
Technical specification

Ext. Dim.	600 x 400 x 300mm
Int. Dim.	460 x 340 x 270mm
Capacity	50 litres
Weight	2.3kg
Material	HDPE
Colour	Grey/light grey, grey/red



○ 11053 / SNR15306

Containers securely stack when loaded and nested, by turning through 180°, to save space when not in use. Bi-colour design clearly identifies stacking and nesting positions. Solid base, ventilated sides.



Dolly
91005 /
DOJ90501

Lid
61046 /
LH104604

Stacked
585mm

Nested
70%

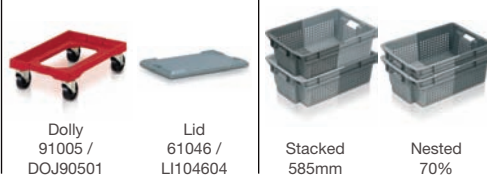
Technical specification

Ext. Dim.	600 x 400 x 300mm
Int. Dim.	460 x 340 x 270mm
Capacity	50 litres
Weight	2.27kg
Material	HDPE
Colour	Grey/light grey



○ 11052 / SN105201

Containers securely stack when loaded and nested, by turning through 180°, to save space when not in use. Bi-colour design clearly identifies stacking and nesting positions. Ventilated sides and base.



Dolly
91005 /
DOJ90501

Lid
61046 /
LH104604

Stacked
585mm

Nested
70%

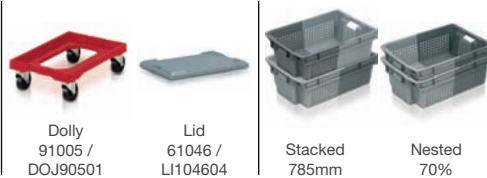
Technical specification

Ext. Dim.	600 x 400 x 300mm
Int. Dim.	460 x 340 x 270mm
Capacity	50 litres
Weight	2.1kg
Material	HDPE
Colour	Grey/light grey



○ 11065 / SN106505

Containers securely stack when loaded and nested, by turning through 180°, to save space when not in use. Bi-colour design clearly identifies stacking and nesting positions. Solid sides and base.



Dolly
91005 /
DOJ90501

Lid
61046 /
LH104604

Stacked
785mm

Nested
70%

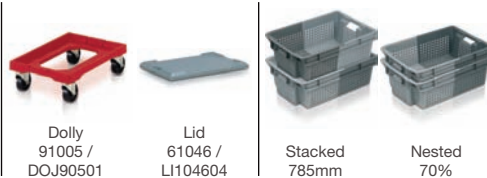
Technical specification

Ext. Dim.	600 x 400 x 400mm
Int. Dim.	460 x 340 x 370mm
Capacity	70 litres
Weight	3.06kg
Material	HDPE
Colour	Grey/light grey



○ 11066 / SN106601

Containers securely stack when loaded and nested, by turning through 180°, to save space when not in use. Bi-colour design clearly identifies stacking and nesting positions. Ventilated sides and base.



Dolly
91005 /
DOJ90501

Lid
61046 /
LH104604

Stacked
785mm

Nested
70%

Technical specification

Ext. Dim.	600 x 400 x 400mm
Int. Dim.	460 x 340 x 370mm
Capacity	70 litres
Weight	2.65kg
Material	HDPE
Colour	Grey



○ 11067 / SNR16706

Containers securely stack when loaded and nested, by turning through 180°, to save space when not in use. Bi-colour design clearly identifies stacking and nesting positions. Solid base, ventilated sides.



Dolly
91005 /
DOJ90501

Lid
61046 /
LH104604

Stacked
785mm

Nested
70%

Technical specification

Ext. Dim.	600 x 400 x 400mm
Int. Dim.	460 x 340 x 370mm
Capacity	70 litres
Weight	2.75kg
Material	HDPE
Colour	Grey



○ 12035 / SN203505

Containers stack securely when loaded and nest, by turning through 180°, to save space when not in use.



Stacked
520mm

Nested
70%

Technical specification

Ext. Dim. 500 x 400 x 270mm
Int. Dim. 370 x 340 x 240mm
Capacity 35 litres
Weight 1.8kg
Material HDPE
Colour White



○ 11044 / SN104405

Containers stack securely when loaded and nest, by turning through 180°, to save space when not in use.



Stacked
360mm

Nested
70%

Technical specification

Ext. Dim. 755 x 435 x 190mm
Int. Dim. 680 x 360 x 170mm
Capacity 44 litres
Weight 2.25kg
Material HDPE
Colour Red



○ 11060 / SN106005

Containers stack securely when loaded and nest, by turning through 180°, to save space when not in use.



Stacked
520mm

Nested
70%

Technical specification

Ext. Dim. 800 x 450 x 270mm
Int. Dim. 620 x 370 x 230mm
Capacity 60 litres
Weight 3.68kg
Material HDPE
Colour Grey/red



○ 12070 / SN207005

Containers stack securely when loaded and nest, by turning through 180°, to save space when not in use.



Stacked
564mm

Nested
68%

Technical specification

Ext. Dim. 800 x 450 x 292mm
Int. Dim. 620 x 370 x 257mm
Capacity 66 litres
Weight 4.06kg
Material HDPE
Colour Red



○ 11048 / SN104801

Containers stack securely when loaded and nest, by turning through 180°, to save space when not in use.



Stacked
409mm

Nested
49%

Technical specification

Ext. Dim. 665 x 460 x 212mm
Int. Dim. 625 x 400 x 194mm
Capacity 48 litres
Weight 2.45kg
Material HDPE
Colour Grey



○ 12061 / SN120604

Containers stack securely when loaded and nest, by turning through 180°, to save space when not in use.



Stacked
520mm

Nested
70%

Technical specification

Ext. Dim. 800 x 450 x 270mm
Int. Dim. 620 x 370 x 230mm
Capacity 60 litres
Weight 3.88kg
Material HDPE
Colour White



○ 11075 / SN107505

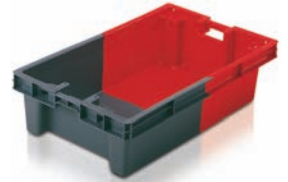
Containers stack securely when loaded and nest, by turning through 180°, to save space when not in use.



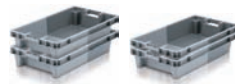
Stacked 450mm
Nested 70%

Technical specification

Ext. Dim. 890 x 560 x 235mm
Int. Dim. 695 x 475 x 200mm
Capacity 75 litres
Weight 4.15kg
Material HDPE
Colour Grey/red



○ 12A30



Stacked 270mm
Nested 46mm

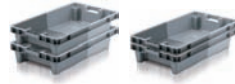
Technical specification

Ext. Dim. 800 x 450 x 150mm
Int. Dim. 620 x 370 x 115mm
Nested Height 46mm
Capacity 30 litres
Weight 2.5kg
Colour Grey/light grey



○ 12A31

With external drainage.



Stacked 270mm
Nested 46mm

Technical specification

Ext. Dim. 800 x 450 x 150mm
Int. Dim. 620 x 370 x 105mm
Nested Height 46mm
Capacity 30 litres
Weight 2.5kg
Colour Grey/light grey



○ 12A32

16 off 10mm Ø drainage holes, subject to minimum quantity.



Stacked 270mm
Nested 46mm

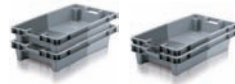
Technical specification

Ext. Dim. 800 x 450 x 150mm
Int. Dim. 620 x 370 x 115mm
Nested Height 46mm
Capacity 30 litres
Weight 2.5kg
Colour Grey/light grey



○ 12041

With external drainage.



Stacked 360mm
Nested 55mm

Technical specification

Ext. Dim. 800 x 450 x 190mm
Int. Dim. 624 x 372 x 155mm
Nested Height 55mm
Capacity 38 litres
Weight 2.6kg
Colour Grey/light grey

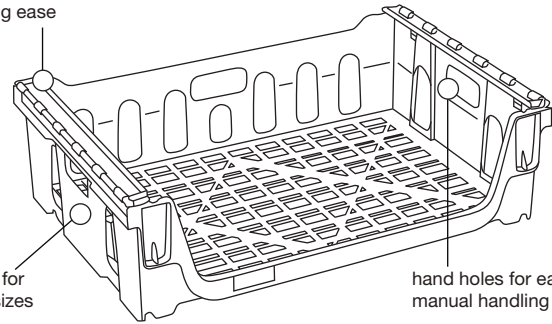




slide stacking feature for added stacking ease

baskets sized for different loaf sizes

hand holes for easy manual handling



Plastic baskets designed specifically for the distribution of bread and morning goods.

○ SN150201

Open fronted stack and nest basket with positive slide stacking to ensure secure stacking.

suitable for:

- bread deliveries
- morning goods



Dolly
DO322601



Stacked
371mm

Nested
68%

Technical specification

Ext.Top Dim.	788 x 617 x 190mm
Int.Base Dim.	723 x 569 x 165mm
Load	145kg on base tray
Capacity	68 litres
Weight	2.4kg
Material	Polypropylene
Colour	Blue



○ SN121202

Open fronted stack and nest basket with positive slide stacking to ensure secure stacking.

suitable for:

- bread deliveries
- morning goods



Dolly
DO302001



Stacked
425mm

Nested
50%

Technical specification

Ext.Top Dim.	762 x 508 x 216mm
Int.Base Dim.	697 x 463 x 190mm
Load	120kg on base tray
Capacity	65 litres
Weight	1.9kg
Material	Polypropylene
Colour	Grey



○ SN645401

Stack and nest bread bun tray with rigid base for conveyor and automated handling.

suitable for:

- morning goods
- confectionery



Stacked
215mm

Nested
70%

Technical specification

Ext.Top Dim.	640 x 540 x 117mm
Int.Base Dim.	595 x 505 x 88mm
Load	100kg on base tray
Capacity	26 litres
Weight	1.5kg
Material	Polypropylene
Colour	Blue



○ SN151501

Open fronted stack and nest basket that stacks and nests by turning through 90°.

suitable for:

- bread deliveries
- morning goods

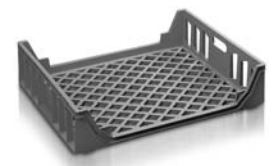


Stacked
341mm

Nested
100%

Technical specification

Ext.Top Dim.	772 x 627 x 176mm
Int.Base Dim.	716 x 586 x 149mm
Load	145kg on base tray
Capacity	63 litres
Weight	2.1kg
Material	Polypropylene
Colour	Grey



○ SN150401

Open fronted stack and nest basket with positive slide stacking to ensure secure stacking.

suitable for:

- bread deliveries
- morning goods

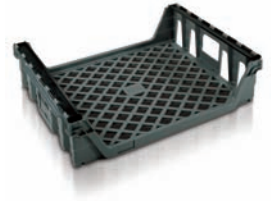


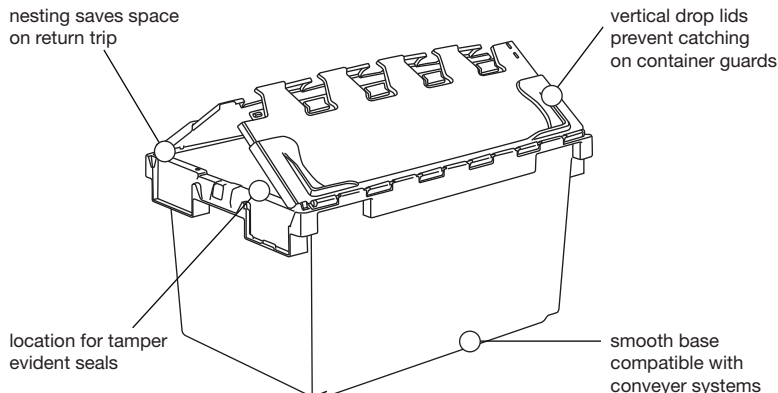
Stacked
375mm

Nested
70%

Technical specification

Ext.Top Dim.	815 x 635 x 192mm
Int.Base Dim.	739 x 595 x 168mm
Load	145kg on base tray
Capacity	75 litres
Weight	2.7kg
Material	Polypropylene
Colour	Grey





Containers with built-in tamper-proof features to deter the theft of high risk or high value goods in transit.

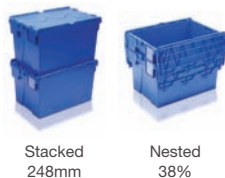
Security seals available for all attached lid containers. *Label holders available.

○ 10005 / AT000504*

Small attached lid container. Stacks two-up on refs.10020 and 10025.

suitable for:

- high value goods
- magazine distribution
- medical items



Stacked 248mm

Nested 38%

Technical specification

Ext. Dim.	300 x 200 x 130mm
Int. Dim.	245 x 160 x 101mm
Capacity	4 litres
Weight	0.7kg
Material	Polypropylene
Colour	Dark green/ light green

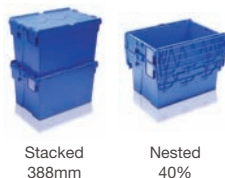


○ 10010 / AT001004*

Small attached lid container. Stacks two-up on refs.10020 and 10025.

suitable for:

- high value goods
- magazine distribution
- medical items



Stacked 388mm

Nested 40%

Technical specification

Ext. Dim.	300 x 200 x 200mm
Int. Dim.	235 x 152 x 174mm
Capacity	6 litres
Weight	0.85kg
Material	Polypropylene
Colour	Dark green/ light green



○ AT432204

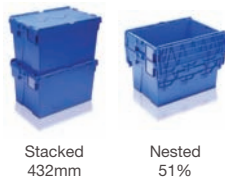
Small attached lid container.

suitable for:

- high value goods
- magazine distribution
- medical items



Dolly DO795904



Stacked 432mm

Nested 51%

Technical specification

Ext. Top Dim.	400 x 300 x 222mm
Int. Base Dim.	338 x 254 x 197mm
Capacity	18 litres
Weight	1.8kg
Material	Polypropylene
Colour	Blue



○ 10020 / AT002004*

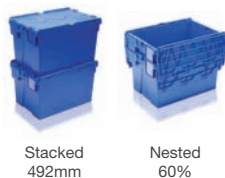
Small attached lid container. Stacks two-up on refs.10040, 1005B and 1006B.

suitable for:

- high value goods
- magazine distribution
- medical items



Dolly DO795904



Stacked 492mm

Nested 60%

Technical specification

Ext. Dim.	400 x 300 x 252mm
Int. Dim.	325 x 246 x 222mm
Capacity	20 litres
Weight	1.65kg
Material	Polypropylene
Colour	Dark green/ light green



○ AT432604

Small attached lid container.

suitable for:

- high value goods
- magazine distribution
- medical items



Dolly
DO795904



Stacked
516mm

Nested
59%

Technical specification

Ext.Top Dim.	400 x 300 x 264mm
Int.Base Dim.	334 x 254 x 239mm
Capacity	22 litres
Weight	1.9kg
Material	Polypropylene
Colour	Blue



○ AT433104

Small attached lid container.

suitable for:

- high value goods
- magazine distribution
- medical items



Dolly
DO795904



Stacked
601mm

Nested
64%

Technical specification

Ext.Top Dim.	400 x 300 x 306mm
Int.Base Dim.	329 x 250 x 282mm
Capacity	25 litres
Weight	2.1kg
Material	Polypropylene
Colour	Blue



○ 10025 / AT002504*

Small attached lid container.
Stacks two-up on refs.10040,
1005B and 1006B.

suitable for:

- high value goods
- magazine distribution
- medical items



Dolly
DO795904



Stacked
628mm

Nested
69%

Technical specification

Ext. Dim.	400 x 300 x 320mm
Int. Dim.	321 x 244 x 295mm
Capacity	25 litres
Weight	1.87kg
Material	Polypropylene
Colour	Dark green/ light green



○ 10040 / AT100404*

Tamper evident container with
attached lid.

suitable for:

- high value goods
- clothing
- electrical products



Dolly
DO795904



Stacked
488mm

Nested
66%

Technical specification

Ext. Dim.	600 x 400 x 250mm
Int. Dim.	515 x 343 x 215mm
Capacity	40 litres
Weight	2.79kg
Material	Polypropylene
Colour	Dark green/ light green



○ AT642604

Tamper evident container with
attached lid.

suitable for:

- high value goods
- clothing
- electrical products



Dolly
DO795904



Stacked
517mm

Nested
75%

Technical specification

Ext.Top Dim.	600 x 400 x 264mm
Int.Base Dim.	530 x 353 x 240mm
Capacity	48 litres
Weight	3kg
Material	Polypropylene
Colour	Blue



○ AT643104

Tamper evident container with
attached lid.

suitable for:

- high value goods
- clothing
- electrical products



Dolly
DO795904



Stacked
601mm

Nested
64%

Technical specification

Ext.Top Dim.	600 x 400 x 306mm
Int.Base Dim.	514 x 350 x 281mm
Capacity	54 litres
Weight	3.2kg
Material	Polypropylene
Colour	Blue



○ 10A5B / AT0A5B04*

Tamper evident container with attached lid.
suitable for:

- high value goods
- clothing
- electrical products



Dolly
DO795904



Stacked
628mm



Nested
73%

Technical specification

Ext.Top Dim. 600 x 400 x 320mm
Int.Base Dim. 508 x 355 x 285mm
Capacity 54 litres
Weight 3.2kg
Material Polypropylene
Colour Dark green/
light green



○ AT643604

Tamper evident container with attached lid.
suitable for:

- high value goods
- clothing
- electrical products



Dolly
DO795904



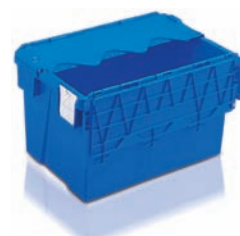
Stacked
719mm



Nested
70%

Technical specification

Ext.Top Dim. 600 x 400 x 365mm
Int.Base Dim. 508 x 346 x 340mm
Capacity 65 litres
Weight 3.5kg
Material Polypropylene
Colour Blue



○ 10A6B / AT0A6B04*

Tamper evident container with attached lid.
suitable for:

- high value goods
- clothing
- electrical products



Dolly
DO795904



Stacked
718mm



Nested
76%

Technical specification

Ext.Top Dim. 600 x 400 x 365mm
Int.Base Dim. 501 x 328 x 330mm
Capacity 64 litres
Weight 3.38kg
Material Polypropylene
Colour Dark green/
light green



○ 10066 / AT006604*

Tamper evident container with attached lid.
suitable for:

- high value goods
- clothing
- electrical products



Dolly
DO795904



Stacked
758mm



Nested
70%

Technical specification

Ext. Dim. 600 x 400 x 385mm
Int. Dim. 512 x 329 x 355mm
Capacity 67 litres
Weight 3.9kg
Material Polypropylene
Colour Dark green/
light green



○ AT644004

Tamper evident container with attached lid.
suitable for:

- high value goods
- clothing
- electrical products



Dolly
DO795904



Stacked
787mm



Nested
73%

Technical specification

Ext.Top Dim. 600 x 400 x 400mm
Int.Base Dim. 521 x 343 x 375mm
Capacity 70 litres
Weight 3.7kg
Material Polypropylene
Colour Blue



○ 10A82 / AT10A829*

Tamper evident container with attached lid.
suitable for:

- high value goods
- office removals



Dolly
DO684301



Stacked
724mm



Nested
78%

Technical specification

Ext.Top Dim. 710 x 460 x 368mm
Int.Base Dim. 597 x 374 x 330mm
Capacity 80 litres
Weight 4.3kg
Material Polypropylene
Colour Dark green/
light green



○ 10A83 / AT10A804*

Tamper evident container with attached lid.

suitable for:

- high value goods
- office removals



Dolly
DO684301



Stacked
724mm

Nested
78%

Technical specification

Ext.Top Dim.	710 x 460 x 368mm
Int.Base Dim.	597 x 374 x 330mm
Capacity	80 litres
Weight	4.3kg
Material	Polypropylene
Colour	Dark green/ light green



○ AT541704*

Tamper evident container with attached foldable lid to prevent grounding when open.

suitable for:

- high value goods
- CDs
- video tapes

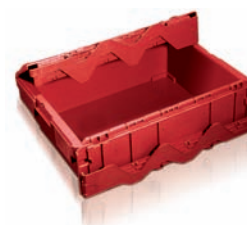


Stacked
338mm

Nested
60%

Technical specification

Ext.Top Dim.	500 x 400 x 175mm
Int.Base Dim.	430 x 352 x 145mm
Load	150kg on base tray
Capacity	22 litres
Weight	2.2kg
Material	Polypropylene
Colour	Burgundy



○ AT542404*

Tamper evident container with attached lid.

suitable for:

- pharmaceutical supplies
- electrical goods
- computer games



Stacked
468mm

Nested
66%

Technical specification

Ext.Top Dim.	500 x 400 x 240mm
Int.Base Dim.	430 x 352 x 205mm
Load	150kg on base tray
Capacity	28 litres
Weight	2.3kg
Material	Polypropylene
Colour	Burgundy



○ AT543004*

Tamper evident container with attached lid.

suitable for:

- pharmaceutical supplies
- electrical goods
- computer games



Stacked
588mm

Nested
73%

Technical specification

Ext.Top Dim.	500 x 400 x 300mm
Int.Base Dim.	430 x 352 x 265mm
Load	150kg on base tray
Capacity	36 litres
Weight	2.5kg
Material	Polypropylene
Colour	Burgundy



○ AT544004*

Tamper evident container with attached lid.

suitable for:

- pharmaceutical supplies
- electrical goods
- computer games



Stacked
788mm

Nested
80%

Technical specification

Ext.Top Dim.	500 x 400 x 400mm
Int.Base Dim.	430 x 352 x 265mm
Load	150kg on base tray
Capacity	49 litres
Weight	2.8kg
Material	Polypropylene
Colour	Burgundy



○ 10552 / AT055209*

Distribution picking container with sliding door and multi-fold lid.



Dolly
DO795904



Stacked
625mm

Nested
65%

Technical specification

Ext. Dim.	600 x 400 x 320mm
Int. Dim.	505 x 334 x 292mm
Door Aperture	290 x 165mm
Nested Height	110mm
Capacity	54 litres
Weight	3.2kg
Material	Polypropylene
Colour	Dark green/light green





euro stacking



euro boxes with lids

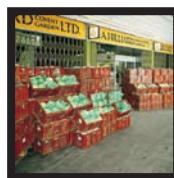
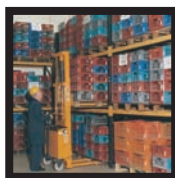


eureka®

Stacking containers – a world class workhorse, adopted by numerous industry sectors and deployed in countless operations across the world.

○ product story

This range of products is so commonplace now and functionally versatile it is impossible for us to describe an average or typical usage situation. It has been universally adopted as the stacking container of choice for industrial and engineering applications.



○ key features and benefits

- Minimal handling
- Minimal waste
- Heavy duty modular range
- Excellent capacity/overall size ration
- Clean and safe
- Optimum protection of your goods
- Galia and KLT ranges are manufactured to standards approved by the automotive industry.



KLT



LWB



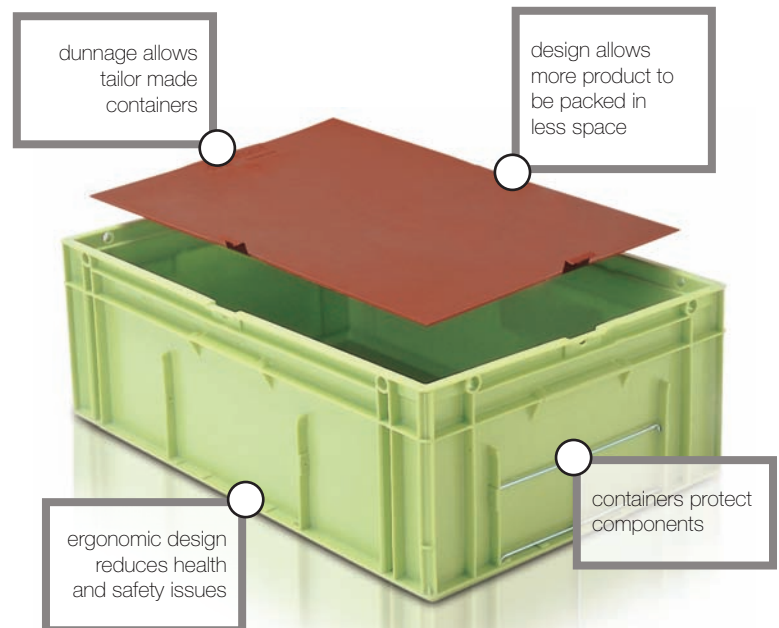
confectionary trays

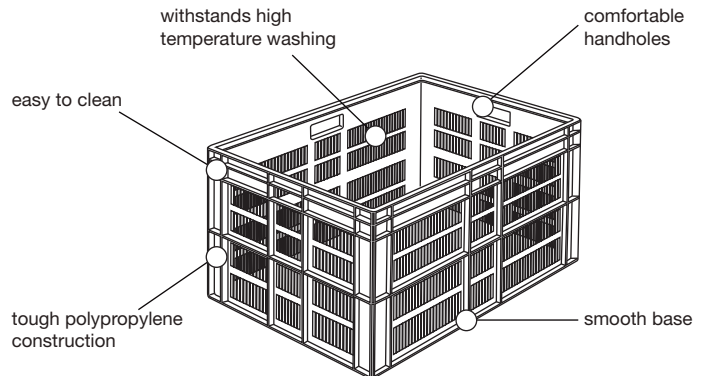
○ Galia

No-one is more attuned to the needs of the automotive industry than LINPAC Allibert. We have vast, global experience in this sector and we are the favoured supplier of materials handling products and services to many of the world's largest and most sophisticated vehicle manufacturers. (You may be familiar with the names Galia, KLT and Eureka, which are benchmark containers in Europe.)

We supply rigid and stacking returnable transit packaging in a huge variety of sizes and configurations and can design both dunnage and bespoke products to suit exact needs.

Our aim is always to provide our customers with solutions that allow substantial savings in packaging, labour and transport. We help them cut waste, pack more product per square metre and protect delicate components on their journey to the line.





Euro stacking range of modular containers offer flexible storage and distribution.

○ 20002 / ES000204

Small Euro stacking container.
suitable for:

- small parts storage



Stacked
226mm

Technical specification

Ext. Dim.	200 x 150 x 118mm
Int. Dim.	165 x 115 x 108mm
Capacity	2 litres
Weight	0.23kg
Material	Polypropylene
Colour	Grey



○ 21005 / ES210004

Small Euro stacking container.
suitable for:

- small parts storage



Stacked
226mm

Technical specification

Ext. Dim.	300 x 200 x 118mm
Int. Dim.	257 x 159 x 108mm
Capacity	5 litres
Weight	0.42kg
Material	Polypropylene
Colour	Grey, red, blue



○ 21006 / ES100604

Half size Euro stacking container
designed to fit on standard pallets.
suitable for:

- automotive parts
- engineering parts
- electrical goods



Dolly
91005 /
DOJ90501

Lid
61020 /
LI610204



Stacked
138mm

Technical specification

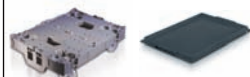
Ext. Dim.	400 x 300 x 74mm
Int. Dim.	355 x 255 x 64mm
Capacity	6 litres
Weight	0.48kg
Material	Polypropylene
Colour	Grey, red



○ 21009 / ES210001

Perforated Euro stacking container
for maximum airflow.
suitable for:

- harvesting soft fruits
- storing meat
- handling small parts



Dolly
DO701901

Lid
61020 /
LI610204



Stacked
226mm

Technical specification

Ext. Top Dim.	400 x 300 x 118mm
Int. Base Dim.	355 x 255 x 105mm
Capacity	10 litres
Weight	0.66kg
Material	Polypropylene
Colour	Grey

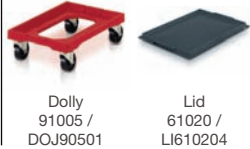


○ 21010 / ES210104

Half size Euro stacking container designed to fit on standard pallets.

suitable for:

- automotive parts
- engineering parts
- electrical goods



Technical specification

Ext. Dim.	400 x 300 x 118mm
Int. Dim.	355 x 255 x 105mm
Capacity	10 litres
Weight	0.796kg
Material	Polypropylene
Colour	Grey, red, white

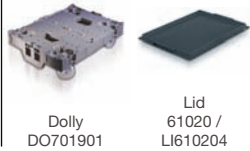


○ 21027 / ES102704

Half size Euro stacking container designed to fit on standard pallets.

suitable for:

- automotive parts
- engineering parts
- electrical goods



Technical specification

Ext. Dim.	400 x 300 x 175mm
Int. Dim.	355 x 255 x 164mm
Capacity	15 litres
Weight	1.02kg
Material	Polypropylene
Colour	Grey, red, blue

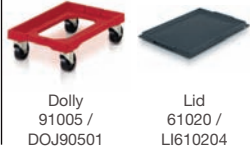


○ 21020 / ES210204

Half size Euro stacking container designed to fit on standard pallets.

suitable for:

- automotive parts
- engineering parts
- electrical goods



Technical specification

Ext. Dim.	400 x 300 x 235mm
Int. Dim.	355 x 255 x 220mm
Capacity	20 litres
Weight	1.272kg
Material	Polypropylene
Colour	Grey, red, blue



○ 21026 / ES102606

Perforated Euro stacking container for maximum airflow.

suitable for:

- harvesting soft fruits
- storing meat
- handling small parts



Technical specification

Ext. Dim.	400 x 300 x 235mm
Int. Dim.	355 x 255 x 220mm
Capacity	20 litres
Weight	1.19kg
Material	Polypropylene
Colour	Grey, red

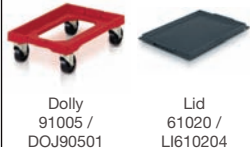


○ 21030 / ES103004

Half size Euro stacking container designed to fit on standard pallets.

suitable for:

- automotive parts
- engineering parts
- electrical goods



Technical specification

Ext. Dim.	400 x 300 x 319mm
Int. Dim.	355 x 255 x 300mm
Capacity	30 litres
Weight	1.77kg
Material	Polypropylene
Colour	Grey

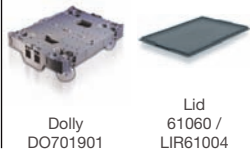


○ 21008 / ES100804

Euro stacking container designed to fit on standard pallets.

suitable for:

- automotive parts
- engineering parts
- electrical goods



Technical specification

Ext. Dim.	600 x 400 x 50mm
Int. Dim.	355 x 355 x 40mm
Capacity	8 litres
Weight	0.795kg
Material	Polypropylene
Colour	Grey



○ 21013 / ES101304

Euro stacking container designed to fit on standard pallets.

suitable for:

- automotive parts
- engineering parts
- electrical goods



Dolly
91005 /
DOJ90501

Lid
61060 /
LIR61004



Stacked
138mm

Technical specification

Ext. Dim.	600 x 400 x 73mm
Int. Dim.	555 x 355 x 62mm
Capacity	12 litres
Weight	1.08kg
Material	Polypropylene
Colour	Grey, red



○ 21014 / ES101401

Perforated Euro stacking container for maximum airflow.

suitable for:

- harvesting soft fruits
- storing meat
- handling small parts



Dolly
91005 /
DOJ90501

Lid
61060 /
LIR61004



Stacked
138mm

Technical specification

Ext. Dim.	600 x 400 x 73mm
Int. Dim.	555 x 355 x 62mm
Capacity	12 litres
Weight	0.96kg
Material	Polypropylene
Colour	Grey



○ 21015 / ES101506

Euro stacking container designed to fit on standard pallets.

suitable for:

- automotive parts
- engineering parts
- electrical goods



Dolly
DO701901

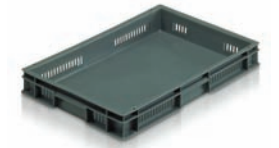
Lid
61060 /
LIR61004



Stacked
138mm

Technical specification

Ext. Dim.	600 x 400 x 73mm
Int. Dim.	555 x 355 x 57mm
Capacity	12 litres
Weight	1.02kg
Material	Polypropylene
Colour	Grey



○ 03019 / ES301948

Perforated Euro stacking container for maximum airflow.

suitable for:

- harvesting soft fruits
- storing meat
- handling small parts



Dolly
DO701901



Stacked
230mm

Technical specification

Ext. Dim.	600 x 400 x 120mm
Int. Dim.	555 x 358 x 104mm
Capacity	20 litres
Weight	1.27kg
Material	HDPE
Colour	White



○ 20019 / ES001911

Perforated Euro stacking container for maximum airflow.

suitable for:

- harvesting soft fruits
- storing meat
- handling small parts



Dolly
91005 /
DOJ90501



Stacked
230mm

Technical specification

Ext. Dim.	600 x 400 x 120mm
Int. Dim.	555 x 358 x 104mm
Capacity	20 litres
Weight	1.17kg
Material	Polypropylene
Colour	Grey



○ 20016 / ES001611

Perforated Euro stacking container for maximum airflow.

suitable for:

- harvesting soft fruits
- storing meat
- handling small parts



Dolly
DO701901



Stacked
230mm

Technical specification

Ext. Dim.	600 x 400 x 120mm
Int. Dim.	555 x 358 x 104mm
Capacity	20 litres
Weight	1.1kg
Material	Polypropylene
Colour	Grey

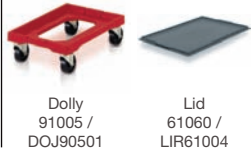


○ 2A021 / ESA02104

Euro stacking container designed to fit on standard pallets.

suitable for:

- automotive parts
- engineering parts
- electrical goods



Technical specification	
Ext. Dim.	600 x 400 x 118mm
Int. Dim.	555 x 355 x 105mm
Capacity	21 litres
Weight	1.36kg
Material	Polypropylene
Colour	Grey, red, blue, white

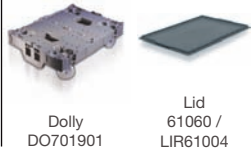


○ 2A022 / ES102101

Perforated Euro stacking container for maximum airflow.

suitable for:

- harvesting soft fruits
- storing meat
- handling small parts



Technical specification	
Ext. Dim.	600 x 400 x 118mm
Int. Dim.	555 x 355 x 105mm
Capacity	21 litres
Weight	1.11kg
Material	Polypropylene
Colour	Grey

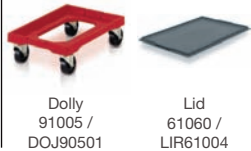


○ 20028 / ES002804

Euro stacking container designed to fit on standard pallets.

suitable for:

- automotive parts
- engineering parts
- electrical goods



Technical specification	
Ext. Dim.	600 x 400 x 150mm
Int. Dim.	555 x 355 x 139mm
Capacity	28 litres
Weight	1.48kg
Material	Polypropylene
Colour	Grey

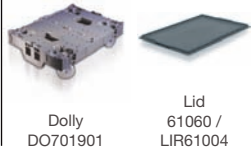


○ 20030 / ES003006

Perforated Euro stacking container for maximum airflow.

suitable for:

- harvesting soft fruits
- storing meat
- handling small parts



Technical specification	
Ext. Dim.	600 x 400 x 150mm
Int. Dim.	555 x 355 x 139mm
Capacity	28 litres
Weight	1.38kg
Material	Polypropylene
Colour	Grey

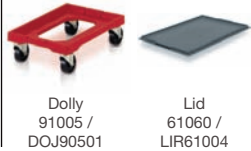


○ 20029 / ES002901

Perforated Euro stacking container for maximum airflow.

suitable for:

- harvesting soft fruits
- storing meat
- handling small parts



Technical specification	
Ext. Dim.	600 x 400 x 150mm
Int. Dim.	555 x 355 x 139mm
Capacity	28 litres
Weight	1.25kg
Material	Polypropylene
Colour	Grey

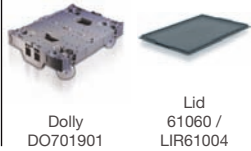


○ 06032 / ES603201

Perforated Euro stacking container for maximum airflow.

suitable for:

- harvesting soft fruits
- storing meat
- handling small parts



Technical specification	
Ext. Dim.	600 x 400 x 170mm
Int. Dim.	555 x 355 x 158mm
Capacity	32 litres
Weight	1.22kg
Material	Polypropylene
Colour	Grey



○ 21033 / ES103304

Euro stacking container designed to fit on standard pallets.

suitable for:

- automotive parts
- engineering parts
- electrical goods



Dolly
91005 /
DOJ90501

Lid
61060 /
LIR61004



Stacked
240mm

Technical specification

Ext. Dim.	600 x 400 x 175mm
Int. Dim.	555 x 355 x 164mm
Capacity	33 litres
Weight	1.7kg
Material	Polypropylene
Colour	Grey, red, blue



○ 21038 / ES103806

Euro stacking container designed to fit on standard pallets.

suitable for:

- automotive parts
- engineering parts
- electrical goods



Dolly
DO701901

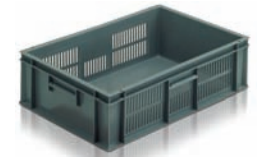
Lid
61060 /
LIR61004



Stacked
240mm

Technical specification

Ext. Dim.	600 x 400 x 175mm
Int. Dim.	555 x 355 x 164mm
Capacity	33 litres
Weight	1.63kg
Material	Polypropylene
Colour	Grey



○ 2A035 / ESA03501

Perforated Euro stacking container for maximum airflow.

suitable for:

- harvesting soft fruits
- storing meat
- handling small parts



Dolly
91005 /
DOJ90501

Lid
61060 /
LIR61004



Stacked
376mm

Technical specification

Ext. Dim.	600 x 400 x 193mm
Int. Dim.	555 x 355 x 167mm
Capacity	35 litres
Weight	1.69kg
Material	Polypropylene
Colour	Grey

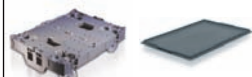


○ 2A049 / ES2A0405

Euro stacking container designed to fit on standard pallets.

suitable for:

- automotive parts
- engineering parts
- electrical goods



Dolly
DO701901

Lid
61060 /
LIR61004



Stacked
330mm

Technical specification

Ext. Dim.	600 x 400 x 235mm
Int. Dim.	555 x 355 x 220mm
Capacity	45 litres
Weight	2.18kg
Material	Polypropylene
Colour	Grey, red, blue, white

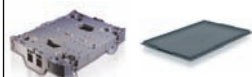


○ 2A046 / ES2A0406

Perforated Euro stacking container for maximum airflow.

suitable for:

- harvesting soft fruits
- storing meat
- handling small parts



Dolly
DO701901

Lid
61060 /
LIR61004



Stacked
460mm

Technical specification

Ext. Dim.	600 x 400 x 235mm
Int. Dim.	555 x 355 x 220mm
Capacity	45 litres
Weight	1.88kg
Material	Polypropylene
Colour	Red



○ 2A044 / ES2A0401

Ventilated sides and base, incorporates strapping facility for secure palletisation.



Dolly
91005 /
DOJ90501

Lid
61060 /
LIR61004



Stacked
460mm

Technical specification

Ext. Dim.	600 x 400 x 235mm
Int. Dim.	555 x 355 x 215mm
Capacity	45 litres
Weight	1.83kg
Material	Polypropylene
Colour	Grey

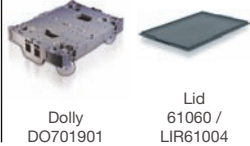


○ 2A045 / ES2A0404

Euro stacking container designed to fit on standard pallets.

suitable for:

- automotive parts
- engineering parts
- electrical goods



Technical specification

Ext. Dim.	600 x 400 x 235mm
Int. Dim.	555 x 355 x 220mm
Capacity	45 litres
Weight	2.18kg
Material	Polypropylene
Colour	Grey, red, blue, white

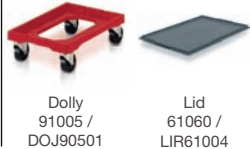


○ 21055 / ES105501

Perforated Euro stacking container for maximum airflow.

suitable for:

- harvesting soft fruits
- storing meat
- handling small parts



Technical specification

Ext. Dim.	600 x 400 x 280mm
Int. Dim.	555 x 355 x 255mm
Capacity	52 litres
Weight	2.18kg
Material	Polypropylene
Colour	Grey

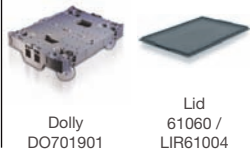


○ 21054 / ES210504

Euro stacking container designed to fit on standard pallets.

suitable for:

- automotive parts
- engineering parts
- electrical goods



Technical specification

Ext. Dim.	600 x 400 x 280mm
Int. Dim.	555 x 355 x 265mm
Capacity	54 litres
Weight	2.51kg
Material	Polypropylene
Colour	Grey

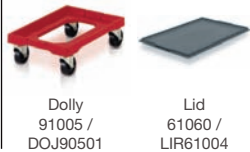


○ 21060 / ES210605

Euro stacking container designed to fit on standard pallets.

suitable for:

- automotive parts
- engineering parts
- electrical goods



Technical specification

Ext. Dim.	600 x 400 x 319mm
Int. Dim.	555 x 355 x 300mm
Capacity	60 litres
Weight	2.75kg
Material	Polypropylene
Colour	Grey, red, white

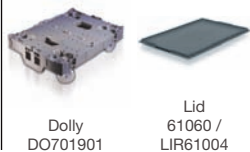


○ 21063 / ES210604

Euro stacking container designed to fit on standard pallets.

suitable for:

- automotive parts
- engineering parts
- electrical goods



Technical specification

Ext. Dim.	600 x 400 x 319mm
Int. Dim.	555 x 355 x 300mm
Capacity	60 litres
Weight	2.88kg
Material	Polypropylene
Colour	Grey

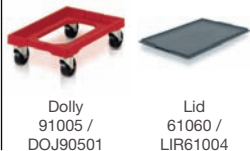


○ 21061 / ES210606

Perforated Euro stacking container for maximum airflow.

suitable for:

- harvesting soft fruits
- storing meat
- handling small parts



Technical specification

Ext. Dim.	600 x 400 x 319mm
Int. Dim.	555 x 355 x 300mm
Capacity	60 litres
Weight	2.31kg
Material	Polypropylene
Colour	Grey, red

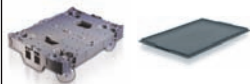


○ 20085 / ES200805

Euro stacking container designed to fit on standard pallets.

suitable for:

- automotive parts
- engineering parts
- electrical goods



Dolly
DO701901

Lid
61060 /
LIR61004



Stacked
814mm

Technical specification

Ext. Dim.	600 x 400 x 412mm
Int. Dim.	555 x 355 x 394mm
Capacity	75 litres
Weight	3.66kg
Material	Polypropylene
Colour	Grey



○ 20086 / ES200806

Perforated Euro stacking container for maximum airflow.

suitable for:

- harvesting soft fruits
- storing meat
- handling small parts



Dolly
91005 /
DOJ90501

Lid
61060 /
LIR61004



Stacked
814mm

Technical specification

Ext. Dim.	600 x 400 x 412mm
Int. Dim.	555 x 355 x 394mm
Capacity	75 litres
Weight	3.08kg
Material	Polypropylene
Colour	Grey



○ 20087 / ES008701

Perforated Euro stacking container for maximum airflow.

suitable for:

- harvesting soft fruits
- storing meat
- handling small parts



Dolly
DO701901

Lid
61060 /
LIR61004



Stacked
814mm

Technical specification

Ext. Dim.	600 x 400 x 412mm
Int. Dim.	555 x 355 x 394mm
Stacking Ht.	400mm
Capacity	75 litres
Weight	3.035kg
Material	Polypropylene
Colour	Grey

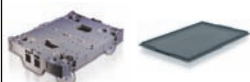


○ 21090 / ES210905

Euro stacking container designed to fit on standard pallets.

suitable for:

- automotive parts
- engineering parts
- electrical goods



Dolly
DO701901

Lid
61087 /
LI108704



Stacked
460mm

Technical specification

Ext. Dim.	800 x 600 x 235mm
Int. Dim.	755 x 555 x 205mm
Capacity	87 litres
Weight	3.85kg
Material	Polypropylene
Colour	Grey



○ 21092 / ES109206

Perforated Euro stacking container for maximum airflow.

suitable for:

- harvesting soft fruits
- storing meat
- handling small parts



Dolly
DO701901

Lid
61087 /
LI108704



Stacked
460mm

Technical specification

Ext. Dim.	800 x 600 x 235mm
Int. Dim.	755 x 555 x 205mm
Capacity	87 litres
Weight	3.47kg
Material	Polypropylene
Colour	Grey



○ 21091 / ES210901

Perforated Euro stacking container for maximum airflow.

suitable for:

- harvesting soft fruits
- storing meat
- handling small parts



Dolly
DO701901

Lid
61087 /
LI108704



Stacked
460mm

Technical specification

Ext. Dim.	800 x 600 x 235mm
Int. Dim.	755 x 555 x 205mm
Capacity	87 litres
Weight	3.33kg
Material	Polypropylene
Colour	Grey

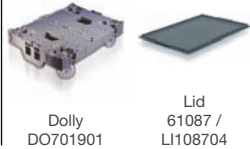


○ 21135 / ES211305

Euro stacking container designed to fit on standard pallets.

suitable for:

- automotive parts
- engineering parts
- electrical goods



Technical specification

Ext. Dim.	800 x 600 x 319mm
Int. Dim.	755 x 555 x 295mm
Capacity	125 litres
Weight	4.65kg
Material	Polypropylene
Colour	Grey

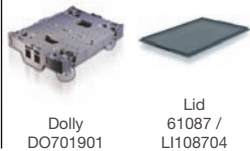


○ 21136 / ES211306

Perforated Euro stacking container for maximum airflow.

suitable for:

- harvesting soft fruits
- storing meat
- handling small parts



Technical specification

Ext. Dim.	800 x 600 x 319mm
Int. Dim.	755 x 555 x 295mm
Capacity	125 litres
Weight	4.06kg
Material	Polypropylene
Colour	Grey

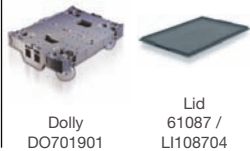


○ 21162 / ES211605

Euro stacking container designed to fit on standard pallets.

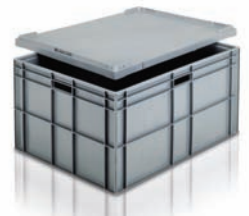
suitable for:

- automotive parts
- engineering parts
- electrical goods



Technical specification

Ext. Dim.	800 x 600 x 412mm
Int. Dim.	755 x 555 x 382mm
Capacity	162 litres
Weight	5.63kg
Material	Polypropylene
Colour	Grey

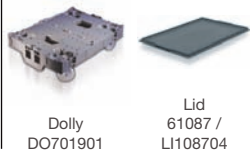


○ 21164 / ES211606

Perforated Euro stacking container for maximum airflow.

suitable for:

- harvesting soft fruits
- storing meat
- handling small parts



Technical specification

Ext. Dim.	800 x 600 x 412mm
Int. Dim.	755 x 555 x 382mm
Capacity	162 litres
Weight	4.99kg
Material	Polypropylene
Colour	Grey

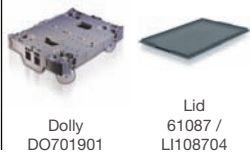


○ 21163 / ES211601

Perforated Euro stacking container for maximum airflow.

suitable for:

- harvesting soft fruits
- storing meat
- handling small parts



Technical specification

Ext. Dim.	800 x 600 x 412mm
Int. Dim.	755 x 555 x 382mm
Capacity	162 litres
Weight	4.65kg
Material	Polypropylene
Colour	Grey



○ 21000

Handle guard.

Technical specification

For containers ref:
20085, 20086, 20087, 04056,
04057, 21060, 21061, 21064,
21090, 21091, 21092, 21106,
21135, 21136, 21162, 21163,
21164.
Colour Grey



○ OPE07

Label holder.

Technical specification

For containers ref:
20085, 21020, 21027, 21030,
21033, 2A045, 21060, 21063,
21135 and Geoboxes.
Material Clear polycarbonate



○ OPE01 /
OTPE0104

Label clip.
Not supplied
with rivets.

Technical specification

Overall Dim. 46 x 32 x 20mm
Material Polypropylene
Colour Natural white



○ OPE08

Label holder.

Technical specification

Overall Dim. 240 x 47 x 6mm
Label width 210mm
Material Polypropylene
Colour Clear



○ OPE02 /
OTPE0204

Card clip.
Can be welded
or riveted onto
container.

Technical specification

Material Polypropylene, HDPE



○ OPE39

Label holder.
European standard
range with flat sides.

Technical specification

Overall Dim. 235 x 85 x 8mm
3 windows 62 x 62mm
Label width 200mm
Material Polycarbonate
Colour Clear



○ OPE05

Label holder.
Not supplied
with rivets.

Technical specification

Label size 85 x 189mm
Colour Yellow



○ OPE90

Label clip.

Technical specification

Overall Dim. 13 x 76 x 19mm
Material Stainless steel



○ OPE06

Label holder.
Not supplied
with rivets.

Technical specification

For ESR containers and ref:
11051 except ref. 20002, 21006,
21008, 21009, 21013.
Colour Black



○ OPEA6

Label holder.
Not supplied
with rivets.

Technical specification

Ext. Dim. 171 x 108mm
Label size 150 x 105mm
Material Polypropylene
Colour Clear



○ 21G21 /
RB1G2104

Modular storage tray.

Technical specification

Ext. Dim. 278 x 178 x 90mm
 Int. Dim. 265 x 165 x 88mm
 Weight 0.3kg
 Material Polypropylene
 Colour Blue



○ 80088

Divider strips.

Technical specification

Overall Dim. 1104 x 88mm
 Weight 0.22kg
 Material Polypropylene



○ 00413

Divider for 21G21 /
RB1G2104.

Technical specification

Divider for ref. 21G21 / RB1G2104
 Overall Dim. 169 x 82mm
 Weight 0.05kg
 Material Polypropylene
 Colour Blue



○ 80150

Divider strips.

Technical specification

Overall Dim. 1100 x 150mm
 Weight 0.44kg
 Material Polypropylene

○ 21G22 /
RB1G2204Double divider
creating four
compartments.

Technical specification

Divider for ref. 21G21 / RB1G2104
 Int. Dim. 131 x 81mm
 Weight 0.40kg
 Material Polypropylene
 Colour Blue



○ 80190

Divider strips.

Technical specification

Overall Dim. 1100 x 190mm
 Weight 0.54kg
 Material Polypropylene



○ 80045

Divider strips.

Technical specification

Overall Dim. 1104 x 45mm
 Weight 0.11kg
 Material Polypropylene



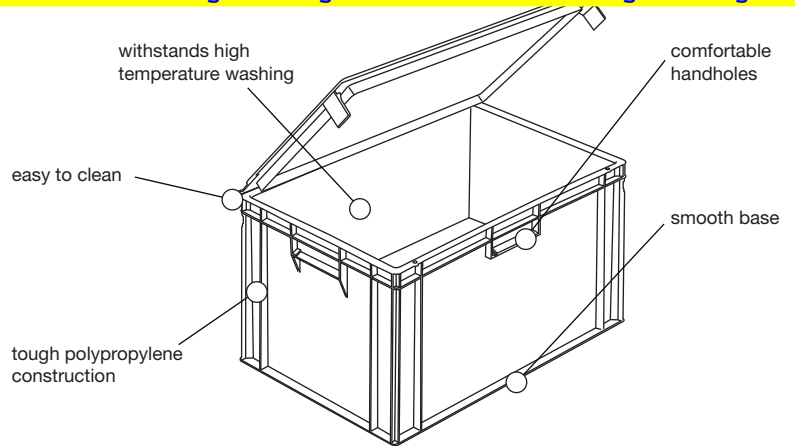
printing and labelling

We can offer a wide range of personalised solutions to increase identification, traceability and promote your company's image.

Corporate colours and branding can greatly enhance containers and ensure that your company image is promoted throughout the whole logistics chain.

- hot die stamping
- moulded-in logos and information
- bar code labels
- label holders/ticketclips and windows
- RFID tags
- security tags
- products moulded to match corporate colours.





A versatile modular range of euro stacking containers with attached lids for added security.

○ 20C10 / ES0C1004

Half size Euro container with attached lid for secure component storage.



Dolly
91005 /
DOJ90501



Stacked
248mm

Technical specification

Ext. Dim.	400 x 300 x 129mm
Int. Dim.	355 x 255 x 105mm
Capacity	10 litres
Weight	1.21kg
Material	Polypropylene
Colour	Grey



○ 21C27 / ES1C2704

Half size Euro container with attached lid for secure component storage.



Dolly
DO701901



Stacked
362mm

Technical specification

Ext. Dim.	400 x 300 x 186mm
Int. Dim.	355 x 255 x 164mm
Capacity	15 litres
Weight	1.43kg
Material	Polypropylene
Colour	Grey



○ 21C20 / ES1C2004

Half size Euro container with attached lid for secure component storage.



Dolly
91005 /
DOJ90501



Stacked
482mm

Technical specification

Ext. Dim.	400 x 300 x 246mm
Int. Dim.	355 x 255 x 220mm
Capacity	20 litres
Weight	1.68kg
Material	Polypropylene
Colour	Grey



○ 21C30 / ES1C3004

Half size Euro container with attached lid for secure component storage.



Dolly
DO701901



Stacked
650mm

Technical specification

Ext. Dim.	400 x 300 x 330mm
Int. Dim.	355 x 255 x 300mm
Capacity	30 litres
Weight	2.18kg
Material	Polypropylene
Colour	Grey



○ 21C13 / ES1C1304

Standard Euro container with attached lid for secure component and part storage and distribution.



Dolly
91005 /
DOJ90501



Stacked
158mm

Technical specification

Ext. Dim.	600 x 400 x 84mm
Int. Dim.	555 x 355 x 62mm
Capacity	12 litres
Weight	1.86kg
Material	Polypropylene
Colour	Grey



○ 21C21 / ES1C2104

Standard Euro container with attached lid for secure component and part storage and distribution.



Dolly
DO701901



Stacked
248mm

Technical specification

Ext. Dim.	600 x 400 x 129mm
Int. Dim.	555 x 355 x 105mm
Capacity	21 litres
Weight	2.14kg
Material	Polypropylene
Colour	Grey



○ 20C28 / ES0C2804

Standard Euro container with attached lid for secure component and part storage and distribution.



Dolly
91005 /
DOJ90501



Stacked
312mm

Technical specification

Ext. Dim.	600 x 400 x 161mm
Int. Dim.	555 x 355 x 139mm
Capacity	28 litres
Weight	2.11kg
Material	Polypropylene
Colour	Grey



○ 21C33 / ES1C3304

Standard Euro container with attached lid for secure component and part storage and distribution.



Dolly
DO701901



Stacked
362mm

Technical specification

Ext. Dim.	600 x 400 x 186mm
Int. Dim.	555 x 355 x 164mm
Capacity	33 litres
Weight	2.48kg
Material	Polypropylene
Colour	Grey



○ 21C45 / ES1C4504

Standard Euro container with attached lid for secure component and part storage and distribution.



Dolly
91005 /
DOJ90501



Stacked
482mm

Technical specification

Ext. Dim.	600 x 400 x 246mm
Int. Dim.	555 x 355 x 220mm
Capacity	45 litres
Weight	3.0kg
Material	Polypropylene
Colour	Grey



○ 21C54 / ES1C5404

Standard Euro container with attached lid for secure component and part storage and distribution.



Dolly
DO701901



Stacked
572mm

Technical specification

Ext. Dim.	600 x 400 x 291mm
Int. Dim.	555 x 355 x 265mm
Capacity	54 litres
Weight	3.33kg
Material	Polypropylene
Colour	Grey



○ 20C85 / ES0C8504

Standard Euro container with attached lid for secure component and part storage and distribution.



Dolly
91005 /
DOJ90501

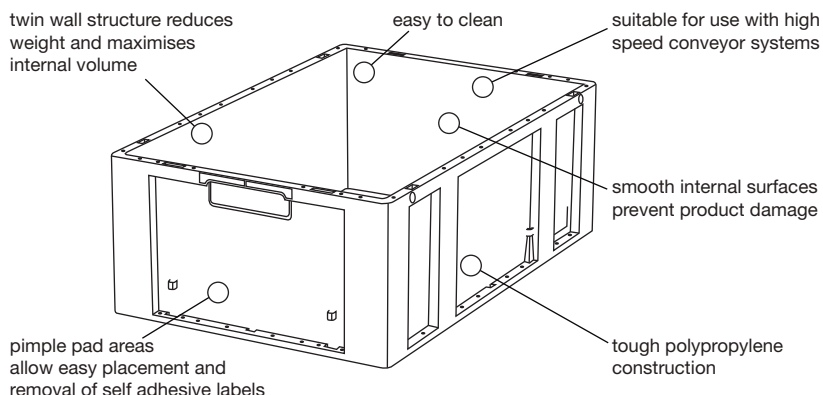


Stacked
836mm

Technical specification

Ext. Dim.	600 x 400 x 423mm
Int. Dim.	555 x 355 x 394mm
Capacity	75 litres
Weight	4.47kg
Material	Polypropylene
Colour	Grey





Eureka stacking containers, lightweight and trackable for efficient industrial logistics.

○ 26006 / ESK30604

Modular range of Euro footprint stacking containers.

- ideal for automated handling
- can be fitted with RFID
- reinforced bases available



Stacked 230mm

Technical specification

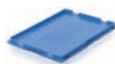
Ext. Dim.	298.5 x 199 x 120mm
Int. Dim.	259 x 160 x 109.5mm
Capacity	5 litres
Weight	0.45kg
Material	PP/HDPE
Colour	Blue



○ 26010 / ESK41004

Modular range of Euro footprint stacking containers.

- ideal for automated handling
- can be fitted with RFID
- reinforced bases available



Lid 60040 / ESKL4004



Stacked 230mm

Technical specification

Ext. Dim.	398 x 298.5 x 120mm
Int. Dim.	359 x 259 x 107mm
Capacity	10 litres
Weight	0.76kg
Material	PP/HDPE
Colour	Blue



○ 26016 / ESK41604

Modular range of Euro footprint stacking containers.

- ideal for automated handling
- can be fitted with RFID
- reinforced bases available



Lid 60040 / ESKL4004



Stacked 330mm

Technical specification

Ext. Dim.	398 x 298 x 170mm
Int. Dim.	359 x 259 x 157.5mm
Capacity	16 litres
Weight	0.98kg
Material	PP/HDPE
Colour	Blue



○ 26018 / ESK41804

Modular range of Euro footprint stacking containers.

- ideal for automated handling
- can be fitted with RFID
- reinforced bases available



Lid 60040 / ESKL4004



Stacked 430mm

Technical specification

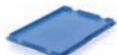
Ext. Dim.	398 x 298.5 x 220mm
Int. Dim.	359 x 259 x 207.5mm
Capacity	20 litres
Weight	1.18kg
Material	PP/HDPE
Colour	Blue



○ 26024 / ESK62404

Modular range of Euro footprint stacking containers.

- ideal for automated handling
- can be fitted with RFID
- reinforced bases available



Lid
60060 /
ESKL6004



Stacked
270mm

Technical specification

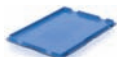
Ext. Dim.	598 x 398 x 140mm
Int. Dim.	558 x 358 x 127mm
Capacity	25 litres
Weight	1.46kg
Material	PP/HDPE
Colour	Blue



○ 26028 / ESK62804

Modular range of Euro footprint stacking containers.

- ideal for automated handling
- can be fitted with RFID
- reinforced bases available



Lid
60060 /
ESKL6004



Stacked
430mm

Technical specification

Ext. Dim.	598 x 398 x 220mm
Int. Dim.	558 x 358 x 207.5mm
Capacity	43 litres
Weight	1.94kg
Material	PP/HDPE
Colour	Blue



○ 26060 / ESK66004

Modular range of Euro footprint stacking containers.

- ideal for automated handling
- can be fitted with RFID
- reinforced bases available



Lid
60060 /
ESKL6004



Stacked
550mm

Technical specification

Ext. Dim.	598 x 398 x 280mm
Int. Dim.	558 x 358 x 267.5mm
Capacity	56 litres
Weight	2.37kg
Material	PP/HDPE
Colour	Blue



○ OPE26

Label holder.
Clips onto container.
No tools required.

Can be fitted to:
26010, 26016, 26018,
26024, 26028, 26060

Technical specification

Dim.	232 x 64mm
Label Length	215mm
Material	PP/HDPE
Colour	Clear



○ OPE28

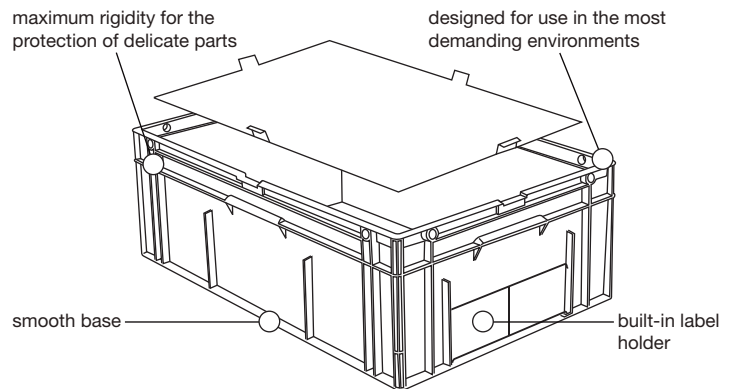
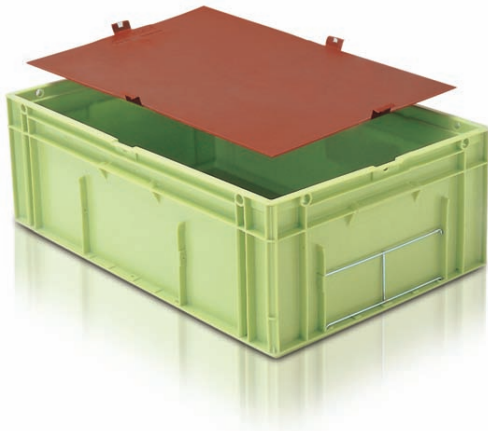
Label holder.
Clips onto container.
No tools required.

Can be fitted to:
26016, 26018,
26028, 26060

Technical specification

Dim.	232 x 102mm
Label Length	215mm
Material	Polycarbonate
Material	Polypropylene
Colour	Clear





Galia range of modular containers approved for and by the automotive industry.

○ 03212 / GA321204

Modular range of containers approved for the automotive industry.



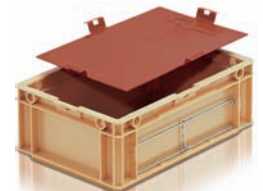
Lid
03200 /
LI032004



Stacked
213mm

Technical specification

Ext. Dim.	300 x 200 x 114mm
Int. Dim.	263 x 163 x 94mm
Capacity	4 litres
Weight	0.57kg
Material	HDPE
Colour	Beige



○ 04312 / GA431204

Modular range of containers approved for the automotive industry.



Dolly
91005 /
DOJ90501



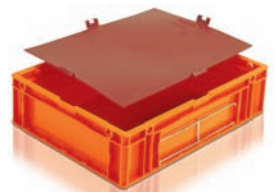
Lid
04300 /
LI043004



Stacked
213mm

Technical specification

Ext. Dim.	400 x 200 x 114mm
Int. Dim.	362 x 263 x 94mm
Capacity	9 litres
Weight	0.93kg
Material	HDPE
Colour	Orange



○ 04322 / GA432204

Modular range of containers approved for the automotive industry.



Dolly
91005 /
DOJ90501



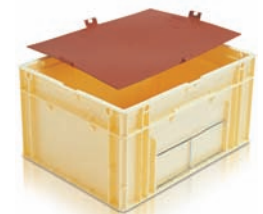
Lid
04300 /
LI043004



Stacked
413mm

Technical specification

Ext. Dim.	400 x 300 x 214mm
Int. Dim.	362 x 263 x 194mm
Capacity	18 litres
Weight	1.44kg
Material	HDPE
Colour	Ivory



○ 06422 / GA642204

Modular range of containers approved for the automotive industry.



Dolly
91005 /
DOJ90501



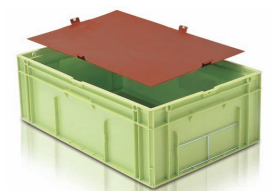
Lid
06400 /
LI064004



Stacked
413mm

Technical specification

Ext. Dim.	600 x 400 x 214mm
Int. Dim.	560 x 362 x 194mm
Capacity	39 litres
Weight	2.38kg
Material	HDPE
Colour	Green



○ 06432 / GA643204

Modular range of containers approved for the automotive industry.



Dolly
91005 /
DOJ90501

Lid
06400 /
LI064004



Stacked
613mm

Technical specification

Ext. Dim. 600 x 400 x 314mm
Int. Dim. 560 x 362 x 294mm
Capacity 59 litres
Weight 2.96kg
Material HDPE
Colour Yellow



○ 01315 / GA131504

Extended Galia box for larger products.



Divider
00431 /
GA131578



Stacked
285mm

Technical specification

Ext. Dim. 1196 x 238 x 150mm
Int. Dim. 1147 x 275 x 132mm
Capacity 42 litres
Weight 3.7kg
Material HDPE
Colour Deep yellow



○ RB651204

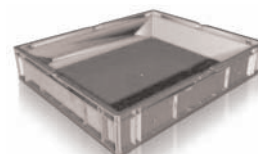
In the configuration Galia.



Stacked
213mm

Technical specification

Ext. Dim. 594 x 496 x 114mm
Int. Dim. 550 x 462 x 100mm
Capacity 25 litres
Weight 1.9kg
Material HDPE
Colour Grey



○ RB652204

In the configuration Galia.



Stacked
413mm

Technical specification

Ext. Dim. 594 x 496 x 214mm
Int. Dim. 550 x 462 x 200mm
Capacity 51 litres
Weight 2.75kg
Material HDPE
Colour Grey



○ RB653204

In the configuration Galia.



Stacked
613mm

Technical specification

Ext. Dim. 594 x 496 x 314mm
Int. Dim. 550 x 462 x 300mm
Capacity 76 litres
Weight 3.18kg
Material HDPE
Colour Grey



○ RB641104

In the configuration Galia.



Dolly
91005 /
DOJ90501

Lid
06400 /
LI064004



Stacked
213mm

Technical specification

Ext. Dim. 594 x 396 x 114mm
Int. Dim. 550 x 362 x 100mm
Capacity 18 litres
Weight 1.75kg
Material HDPE
Colour Grey



○ RB641504

In the configuration Galia.



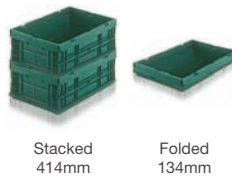
Technical specification

Ext. Dim.	594 x 396 x 164mm
Int. Dim.	550 x 362 x 140mm
Capacity	27.5 litres
Weight	2kg
Material	HDPE
Colour	Grey



○ P6423 / FC642304

Folding Galia type container.



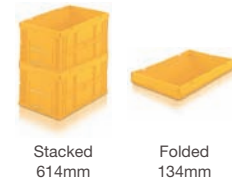
Technical specification

Ext. Dim.	600 x 400 x 214mm
Int. Dim.	560 x 362 x 194mm
Capacity	39 litres
Weight	2.38kg
Material	HDPE
Colour	Green



○ P6433 / FC643304

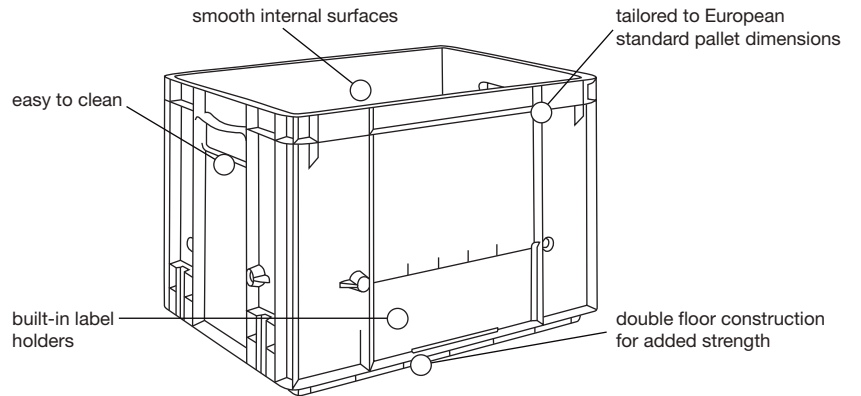
Folding Galia type container.



Technical specification

Ext. Dim.	600 x 400 x 314mm
Int. Dim.	560 x 362 x 294mm
Capacity	59 litres
Weight	2.96kg
Material	HDPE
Colour	Orange





Range of Euro stacking containers specifically designed for heavy duty applications.

○ WB231204

Containers manufactured to DIN standards.

Technical specification

Ext. Dim.	300 x 200 x 120mm
Int. Height	117mm
Capacity	4.5 litres
Weight	0.52kg
Material	Polypropylene
Colour	Green



○ WB242204

Containers manufactured to DIN standards.

Technical specification

Ext. Dim.	400 x 300 x 220mm
Int. Height	202mm
Capacity	18.5 litres
Weight	1.56kg
Material	Polypropylene
Colour	Green



○ WB230404

Lid for use with 300 x 200mm containers.

Technical specification

Ext. Dim.	300 x 200 x 9mm
Weight	0.16kg
Material	Polypropylene
Colour	Green



○ WB242704

Containers manufactured to DIN standards.

Technical specification

Ext. Dim.	400 x 300 x 270mm
Int. Height	252mm
Capacity	23.5 litres
Weight	1.78kg
Material	Polypropylene
Colour	Green



○ WB241204

Containers manufactured to DIN standards.

Technical specification

Ext. Dim.	400 x 300 x 120mm
Int. Height	102mm
Capacity	8.5 litres
Weight	1.17kg
Material	Polypropylene
Colour	Green



○ WB111204

Lid for use with 400 x 300mm containers.

Technical specification

Ext. Dim.	400 x 300 x 9mm
Weight	0.31kg
Material	Polypropylene
Colour	Green



○ WB241704

Containers manufactured to DIN standards.

Technical specification

Ext. Dim.	400 x 300 x 167mm
Int. Height	149mm
Capacity	13.5 litres
Weight	1.34kg
Material	Polypropylene
Colour	Green



○ WB261204

Containers manufactured to DIN standards.

Technical specification

Ext. Dim.	600 x 400 x 120mm
Int. Height	102mm
Capacity	18.1 litres
Weight	2kg
Material	Polypropylene
Colour	Green



○ WB261704

Containers
manufactured to
DIN standards.

Technical specification

Ext. Dim.	600 x 400 x 170mm
Int. Height	149mm
Capacity	27.9 litres
Weight	2.2kg
Material	Polypropylene
Colour	Green



○ WB263204

Containers
manufactured to
DIN standards.

Technical specification

Ext. Dim.	600 x 400 x 320mm
Int. Height	302mm
Capacity	59.7 litres
Weight	3.22kg
Material	Polypropylene
Colour	Green



○ WB262204

Containers
manufactured to
DIN standards.

Technical specification

Ext. Dim.	600 x 400 x 220mm
Int. Height	202mm
Capacity	38.9 litres
Weight	2.5kg
Material	Polypropylene
Colour	Green



○ WB264204

Containers
manufactured to
DIN standards.

Technical specification

Ext. Dim.	600 x 400 x 420mm
Int. Height	402mm
Capacity	80.5 litres
Weight	4.14kg
Material	Polypropylene
Colour	Green



○ WB262704

Containers
manufactured to
DIN standards.

Technical specification

Ext. Dim.	600 x 400 x 270mm
Int. Height	252mm
Capacity	49.3 litres
Weight	2.91kg
Material	Polypropylene
Colour	Green



○ WB123104

Lid for use with
600 x 400mm
containers.

Technical specification

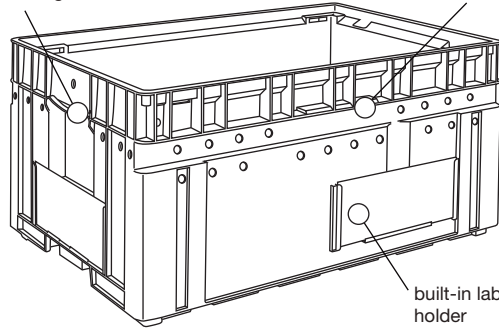
Ext. Dim.	600 x 400 x 10mm
Weight	0.72kg
Material	Polypropylene
Colour	Green





ergonomic handles for easy manual handling

double wall construction for added strength



built-in label holder

KLT, VDA approved, modular family of containers for light and heavy duty industrial applications.

○ KL321404

VDA recommended modular range of containers.



Lid
KL323004



Stacked
266mm

Technical specification

Ext. Dim.	300 x 200 x 148mm
Int. Dim.	260 x 136 x 129mm
Capacity	4.5 litres
Weight	0.7kg
Material	Polypropylene
Colour	Blue



○ KL431404

VDA recommended modular range of containers.



Lid
KL433004



Stacked
266mm

Technical specification

Ext. Dim.	400 x 300 x 148mm
Int. Dim.	334 x 247 x 104mm
Capacity	8.5 litres
Weight	1.6kg
Material	Polypropylene
Colour	Blue



○ KL432804

VDA recommended modular range of containers.



Lid
KL433004



Stacked
530mm

Technical specification

Ext. Dim.	400 x 300 x 280mm
Int. Dim.	334 x 247 x 236mm
Capacity	19 litres
Weight	2.6kg
Material	Polypropylene
Colour	Blue



○ KL641404

VDA recommended modular range of containers.



Lid
KL642504



Stacked
266mm

Technical specification

Ext. Dim.	600 x 400 x 148mm
Int. Dim.	532 x 346 x 104mm
Capacity	18 litres
Weight	2.8kg
Material	Polypropylene
Colour	Blue



○ KL642804

VDA recommended modular range of containers.



Lid
KL642504



Stacked
530mm

Technical specification

Ext. Dim.	600 x 400 x 280mm
Int. Dim.	532 x 346 x 231mm
Capacity	42 litres
Weight	4.4kg
Material	Polypropylene
Colour	Blue



○ RK321504

Single walled construction. KLT style modular range of containers.



Stacked
266mm

Technical specification

Ext. Dim.	300 x 200 x 148mm
Int. Dim.	243 x 162 x 110mm
Capacity	5 litres
Weight	0.6kg
Material	Polypropylene
Colour	Blue



○ RK431504

Single walled construction. KLT style modular range of containers.



Lid
RK432004



Stacked
266mm

Technical specification

Ext. Dim.	400 x 300 x 148mm
Int. Dim.	346 x 265 x 110mm
Capacity	10 litres
Weight	1.3kg
Material	Polypropylene
Colour	Blue



○ RK432904

Single walled construction. KLT style modular range of containers.



Lid
RK432004



Stacked
530mm

Technical specification

Ext. Dim.	400 x 300 x 280mm
Int. Dim.	346 x 265 x 242mm
Capacity	22 litres
Weight	1.9kg
Material	Polypropylene
Colour	Blue



○ RK642904

Single walled construction. KLT style modular range of containers.



Lid
RK642004



Stacked
530mm

Technical specification

Ext. Dim.	600 x 400 x 280mm
Int. Dim.	544 x 364 x 242mm
Capacity	48 litres
Weight	3kg
Material	Polypropylene
Colour	Blue



○ RL314704

Lightweight KLT style modular container range.



Stacked
279mm

Technical specification

Ext. Dim.	300 x 200 x 147mm
Int. Dim.	243 x 162 x 129mm
Capacity	5.3 litres
Weight	0.57kg
Material	Polypropylene
Colour	Blue



○ RL414729

Lightweight KLT style modular container range.



Lid
RK432004



Stacked
279mm

Technical specification

Ext. Dim. 400 x 300 x 147mm
Int. Dim. 345 x 260 x 129mm
Capacity 11.8 litres
Weight 1.08kg
Material Polypropylene
Colour Blue



○ RL428029

Lightweight KLT style modular container range.



Lid
RK432004



Stacked
545mm

Technical specification

Ext. Dim. 400 x 300 x 280mm
Int. Dim. 345 x 260 x 262mm
Capacity 24 litres
Weight 1.7kg
Material Polypropylene
Colour Blue



○ RL628029

Lightweight KLT style modular container range.



Lid
RK642004



Stacked
545mm

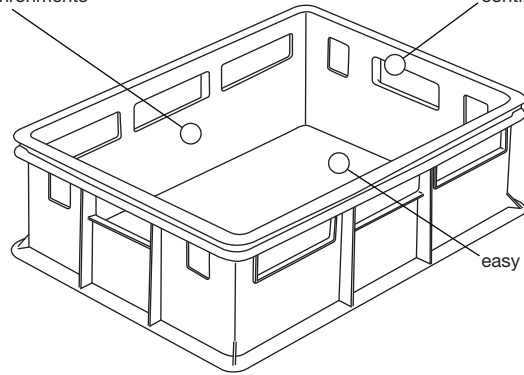
Technical specification

Ext. Dim. 600 x 400 x 280mm
Int. Dim. 544 x 359 x 262mm
Capacity 52 litres
Weight 2.67kg
Material Polypropylene
Colour Blue





durable design for the most demanding environments



perforations allow continuous airflow

easy to clean

A range of stacking containers for a variety of applications.

○ 21018 / RB101804

Stacking container for a variety of applications.



Stacked 270mm

Technical specification

Ext. Dim.	475 x 405 x 140mm
Int. Dim.	415 x 375 x 120mm
Capacity	18 litres
Weight	1.26kg
Material	HDPE
Colour	Grey



○ 21025 / RB102505

Ideal for use in cold temperature storage.



Stacked 340mm

Technical specification

Ext. Dim.	595 x 450 x 175mm
Int. Dim.	545 x 400 x 155mm
Capacity	34 litres
Weight	2.05kg
Material	HDPE
Colour	Red



○ 21041 / RB104101

Ventilated sides and base. Container designed for the transportation of small plants (when used with spacers).



4 spacers 79005 / AYB79500



Stacked 320mm

Technical specification

Ext. Dim.	750 x 450 x 165mm
Int. Dim.	723 x 423 x 140mm
Capacity	43 litres
Weight	1.84kg
Material	HDPE
Colour	Brown-red



○ 54064 / RB546401

Ideal for use in cold temperature storage.



Stacked 410mm

Technical specification

Ext. Dim.	680 x 470 x 210mm
Int. Dim.	650 x 440 x 180mm
Capacity	51 litres
Weight	3kg
Material	HDPE
Colour	Brown-red, white



○ 21024 / RB102428

Harvesting containers.
Undulating base with drainage
holes. Ventilated sides.



Stacked
392mm

Technical specification

Ext. Dim. 500 x 300 x 201mm
Int. Dim. 465 x 265 x 190mm
Capacity 23 litres
Weight 0.98kg
Material HDPE
Colour Brown-red



○ 21029 / RB102928

Harvesting containers.
Undulating base with drainage
holes. Ventilated sides.



Stacked
520mm

Technical specification

Ext. Dim. 500 x 300 x 265mm
Int. Dim. 465 x 265 x 250mm
Capacity 30 litres
Weight 1.4kg
Material HDPE
Colour Brown-red



○ 21028 / RB102801

Harvesting containers.
Flat ventilated base and sides.



Stacked
520mm

Technical specification

Ext. Dim. 500 x 300 x 265mm
Int. Dim. 465 x 265 x 250mm
Capacity 30 litres
Weight 1.32kg
Material HDPE
Colour Brown-red



○ 29049 / SN290401AA

Harvesting containers.
Ventilated base and sides.



Stacked
580mm

Technical specification

Ext. Dim. 550 x 366 x 295mm
Int. Dim. 518 x 333 x 260mm
Capacity 50 litres
Weight 2.05kg
Material HDPE
Colour Brown-red, orange



○ 21108 / RB211005

Stacking container for a variety
of applications.



Stacked
750mm

Technical specification

Ext. Dim. 745 x 470 x 380mm
Int. Dim. 695 x 420 x 365mm
Capacity 106 litres
Weight 4.65kg
Material HDPE
Colour Brown-red



○ 29170 / RB917001

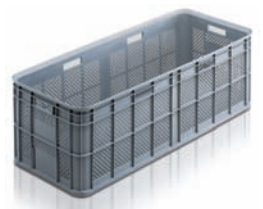
Solid base, ventilated sides.



Stacked
730mm

Technical specification

Ext. Dim. 1190 x 490 x 370mm
Int. Dim. 1140 x 440 x 335mm
Capacity 170 litres
Weight 5.6kg
Material HDPE
Colour Grey



○ 21174 / RBA17401

Stacking containers designed for the distribution and display of baguettes.



Stacked
1365mm

Technical specification

Dim.	655 x 455 x 665mm
Int.Dim.	600 x 400 x 600mm
Capacity	150 litres
Weight	5.08kg
Material	HDPE
Colour	Brown



○ 21175 / RBA17501

Stacking containers designed for the distribution and display of baguettes.

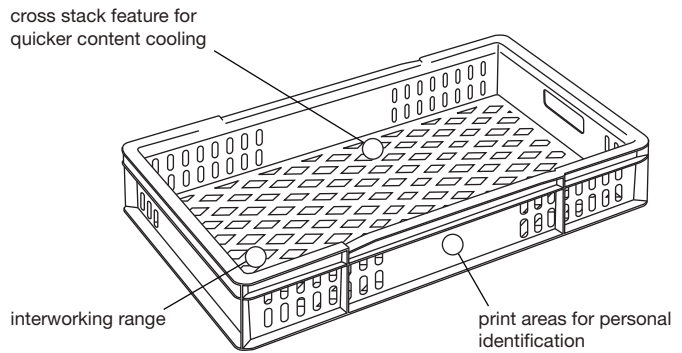


Stacked
1585mm

Technical specification

Dim.	655 x 455 x 800mm
Int.Dim.	600 x 400 x 737mm
Capacity	175 litres
Weight	6kg
Material	HDPE
Colour	Caramel





Modular range of hygienic stacking containers for the food industry.

○ RB318301

Standard 30" x 18" confectionary tray with positive slide stacking to ensure secure stacks.

suitable for:

- confectionery
- morning goods
- meat products



Dolly
DO301801

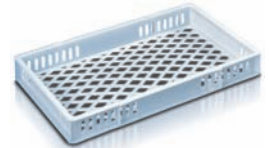
Lid
LI301804



Stacked
176mm

Technical specification

Ext.Top Dim.	762 x 457 x 92mm
Int.Base Dim.	715 x 412 x 72mm
Load	190kg on base tray
Capacity	22 litres
Weight	1.4kg
Material	Polypropylene
Colour	Natural

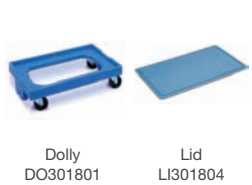


○ RB318501

Standard 30" x 18" confectionary tray with positive slide stacking to ensure secure stacks.

suitable for:

- confectionery
- morning goods
- meat products



Dolly
DO301801

Lid
LI301804



Stacked
238mm

Technical specification

Ext.Top Dim.	762 x 457 x 123mm
Int.Base Dim.	715 x 412 x 103mm
Load	190kg on base tray
Capacity	32 litres
Weight	1.9kg
Material	Polypropylene
Colour	Natural

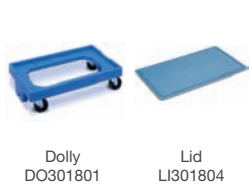


○ RB318701

Standard 30" x 18" confectionary tray with positive slide stacking to ensure secure stacks.

suitable for:

- confectionery
- morning goods
- meat products



Dolly
DO301801

Lid
LI301804



Stacked
344mm

Technical specification

Ext.Top Dim.	762 x 457 x 176mm
Int.Base Dim.	715 x 412 x 156mm
Load	190kg on base tray
Capacity	48 litres
Weight	2.1kg
Material	Polypropylene
Colour	Natural

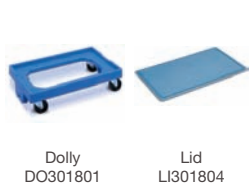


○ RB318304

Standard 30" x 18" confectionary tray with positive slide stacking to ensure secure stacks.

suitable for:

- confectionery
- morning goods
- meat products



Dolly
DO301801

Lid
LI301804



Stacked
176mm

Technical specification

Ext.Top Dim.	762 x 457 x 92mm
Int.Base Dim.	715 x 412 x 72mm
Load	190kg on base tray
Capacity	22 litres
Weight	1.8kg
Material	Polypropylene
Colour	Natural



○ RB318504

Standard 30" x 18" confectionery tray with positive slide stacking to ensure secure stacks.

suitable for:

- confectionery
- morning goods
- meat products



Dolly
DO301801

Lid
LI301804



Stacked
238mm

Technical specification

Ext.Top Dim.	762 x 457 x 123mm
Int.Base Dim.	715 x 412 x 103mm
Load	190kg on base tray
Capacity	32 litres
Weight	2.6kg
Material	Polypropylene
Colour	Natural



○ RB318704

Standard 30" x 18" confectionery tray with positive slide stacking to ensure secure stacks.

suitable for:

- confectionery
- morning goods
- meat products



Dolly
DO301801

Lid
LI301804



Stacked
344mm

Technical specification

Ext.Top Dim.	762 x 457 x 176mm
Int.Base Dim.	715 x 412 x 156mm
Load	190kg on base tray
Capacity	48 litres
Weight	2.2kg
Material	Polypropylene
Colour	Natural



○ RB318306

Standard 30" x 18" confectionery tray with positive slide stacking to ensure secure stacks.

suitable for:

- confectionery
- morning goods
- meat products



Dolly
DO301801

Lid
LI301804



Stacked
176mm

Technical specification

Ext.Top Dim.	762 x 457 x 92mm
Int.Base Dim.	715 x 412 x 72mm
Load	190kg on base tray
Capacity	22 litres
Weight	1.7kg
Material	Polypropylene
Colour	Natural



○ RB318506

Standard 30" x 18" confectionery tray with positive slide stacking to ensure secure stacks.

suitable for:

- confectionery
- morning goods
- meat products



Dolly
DO301801

Lid
LI301804



Stacked
238mm

Technical specification

Ext.Top Dim.	762 x 457 x 123mm
Int.Base Dim.	715 x 412 x 103mm
Load	190kg on base tray
Capacity	32 litres
Weight	2.1kg
Material	Polypropylene
Colour	Natural



○ RB318706

Standard 30" x 18" confectionery tray with positive slide stacking to ensure secure stacks.

suitable for:

- confectionery
- morning goods
- meat products



Dolly
DO301801

Lid
LI301804



Stacked
344mm

Technical specification

Ext.Top Dim.	762 x 457 x 176mm
Int.Base Dim.	715 x 412 x 156mm
Load	190kg on base tray
Capacity	48 litres
Weight	2.5kg
Material	Polypropylene
Colour	Natural





Improving bulk distribution and display of products with Maxipac.

○ BD702892

Maxipac with pallet base has smooth hygienic surfaces, label holders both internal and external and non-sequential folding.

suitable for:

- distribution and display
- handling bulk items



Stacked
1485mm



Folded
57%

Technical specification

Ext.Top Dim.	800 x 600 x 750mm
Int.Base Dim.	756 x 556 x 607mm
Load	250kg on base tray
Capacity	251 litres
Weight	15kg
Material	PP, HDPE
Colour	Black



○ BD702692

Maxipac with pallet base has smooth hygienic surfaces, label holders both internal and external and non-sequential folding.

suitable for:

- distribution and display
- handling bulk items



Stacked
1985mm



Folded
68%

Technical specification

Ext.Top Dim.	800 x 600 x 1000mm
Int.Base Dim.	756 x 556 x 846mm
Load	250kg on base tray
Capacity	357 litres
Weight	22kg
Material	PP, HDPE
Colour	Black



○ BD702792

Maxipac with castors has smooth hygienic surfaces, label holders both internal and external and non-sequential folding.

suitable for:

- distribution and display
- handling bulk items



Stacked
2135mm

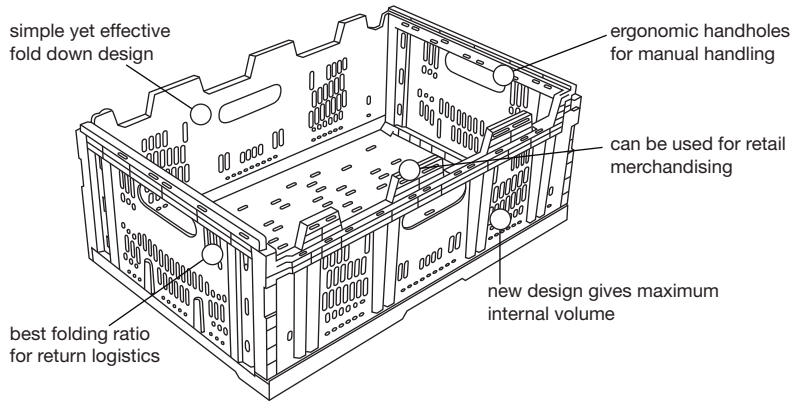


Folded
61%

Technical specification

Ext.Top Dim.	800 x 600 x 1080mm
Int.Base Dim.	756 x 556 x 843mm
Load	250kg on base tray
Capacity	357 litres
Weight	25.5kg
Material	PP, HDPE
Colour	Black



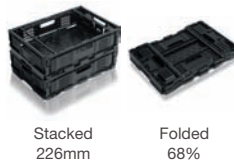


Introducing the new range of European folding produce trays - XLXS.

○ FC640101

Interworking family of folding containers. suitable for:

- fresh fruit and vegetables
- packaged meat products



Technical specification

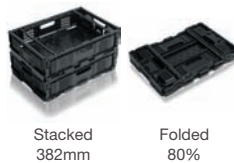
Ext.Overall Dim. 600 x 400 x 118mm
Int.Working Dim. 570 x 370 x 96mm
Load 160kg
Capacity 20.25 litres
Weight 1.347kg
Material Polypropylene
Colour Green



○ FC640301

Interworking family of folding containers. suitable for:

- fresh fruit and vegetables
- packaged meat products



Technical specification

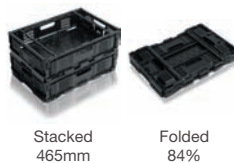
Ext.Overall Dim. 600 x 400 x 196mm
Int.Working Dim. 570 x 370 x 174mm
Load 160kg
Capacity 36.7 litres
Weight 1.644kg
Material Polypropylene
Colour Green



○ FC640501

Interworking family of folding containers. suitable for:

- fresh fruit and vegetables
- packaged meat products



Technical specification

Ext.Overall Dim. 600 x 400 x 238mm
Int.Working Dim. 570 x 364 x 215.5mm
Load 160kg
Capacity 44.7 litres
Weight 1.829kg
Material Polypropylene
Colour Green



○ **FC643404***

Folding container designed to work with European pallet systems. Interworks with FC465004.

suitable for:

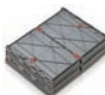
- automotive parts
- electrical goods
- communication products



Dolly
DO484901



Stacked
671mm



Folded
80%

Technical specification

Ext.Top Dim. 600 x 400 x 400mm
Int.Base Dim. 556 x 370 x 325mm
Load 14kg on base tray
Capacity 67 litres
Weight 3.4kg
Material Polypropylene
Colour Grey



○ **FC644004*** – available without lid FC644104

Concertina crate, the unique tamper evident folding container with special seals which not only secures the lid, but also the sides as well.

suitable for:

- clothing distribution
- housewares
- toys



Dolly
D0795904



Stacked
788mm



Folded
83%

Technical specification

Ext.Top Dim. 600 x 400 x 400mm
Int.Base Dim. 570 x 370 x 370mm
Load 150kg on base tray
Capacity 78 litres
Weight 3.6kg
Material Polypropylene
Colour Grey



○ **FC465004***

Galia folding container designed to work with European pallet systems. Interworks with FC643404.

suitable for:

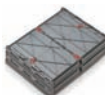
- automotive parts
- electrical goods
- textiles



Dolly
D0795904



Stacked
920mm



Folded
77%

Technical specification

Ext.Top Dim. 800 x 600 x 465mm
Int.Base Dim. 760 x 560 x 420mm
Load 30kg on base tray
Capacity 178 litres
Weight 7.4kg
Material Polypropylene
Colour Grey



○ **MF640102**

Maxifold container interworks with Maxinest range by use of the swing bars which also act as a locking mechanism when in the stacked position.

suitable for:

- fresh fruit and vegetables
- packaged meat products



Dolly
DO484901



Stacked
378mm



Folded
82%

Technical specification

Ext.Top Dim. 600 x 403 x 193mm
Int.Base Dim. 568 x 362 x 158mm
Load 162kg on base tray
Capacity 37 litres
Weight 2kg
Material Polypropylene
Colour Blue



○ **MF640202**

Maxifold container interworks with Maxinest range by use of the swing bars which also act as a locking mechanism when in the stacked position.

suitable for:

- fresh fruit and vegetables
- packaged meat products



Dolly
DO484901



Stacked
318mm



Folded
79%

Technical specification

Ext.Top Dim. 600 x 403 x 163mm
Int.Base Dim. 568 x 362 x 138mm
Load 162kg on base tray
Capacity 29 litres
Weight 1.8kg
Material Polypropylene
Colour Black



○ **P6423 / FC642304**

Folding Galia container approved for the automotive industry.



Dolly
91005 /
DOJ90501



Stacked
414mm



Folded
65%

Technical specification

Ext. Dim. 600 x 400 x 214mm
Int. Dim. 560 x 362 x 194mm
Capacity 39 litres
Weight 2.38kg
Material HDPE
Colour Green



○ P6433 / FC643304

Folding Galia container approved for the automotive industry.



Dolly
91005 /
DOJ90501



Stacked
614mm

Folded
76%

Technical specification

Ext. Dim.	600 x 400 x 314mm
Int. Dim.	560 x 362 x 294mm
Capacity	59 litres
Weight	2.96kg
Material	HDPE
Colour	Orange

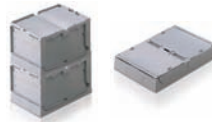


○ FC321804*

Allows maximum utilisation of cube space when in use and space saving when empty.

suitable for:

- automotive and aerospace
- general engineering
- pharmaceutical and retail
- textiles and DIY



Stacked
704mm

Folded
67%

Technical specification

Ext. Top. Dim.	298 x 194 x 182mm
Int. Base. Dim.	261 x 163 x 167mm
Capacity	7 litres
Weight	0.6kg
Colour	Grey



○ FC432204*

Allows maximum utilisation of cube space when in use and space saving when empty.

suitable for:

- automotive and aerospace
- general engineering
- pharmaceutical and retail
- textiles and DIY



Stacked
893mm

Folded
72%

Technical specification

Ext. Top. Dim.	400 x 300 x 230mm
Int. Base. Dim.	357 x 259 x 207mm
Capacity	19 litres
Weight	1.6kg
Colour	Grey



○ FC642204*

Allows maximum utilisation of cube space when in use and space saving when empty.

suitable for:

- automotive and aerospace
- general engineering
- pharmaceutical and retail
- textiles and DIY



Stacked
885mm

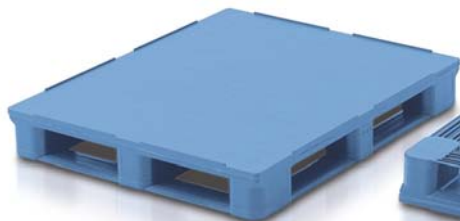
Folded
72%

Technical specification

Ext. Top. Dim.	600 x 400 x 228mm
Int. Base. Dim.	559 x 357 x 207mm
Capacity	41 litres
Weight	2.6kg
Colour	Grey



*Security seals available.



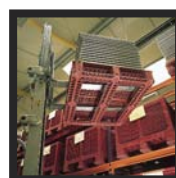
heavy duty pallets – maestro

medium to basic general pallets

A range of pallets that meet stringent hygiene, environmental and load bearing criteria.

○ product story

Our plastic pallets totally out-perform their wooden predecessors. They offer numerous benefits both in terms of load-bearing capacity and hygiene, thanks to innovative design and rigorous manufacturing standards, even though they are considerably lighter and more manoeuvrable.

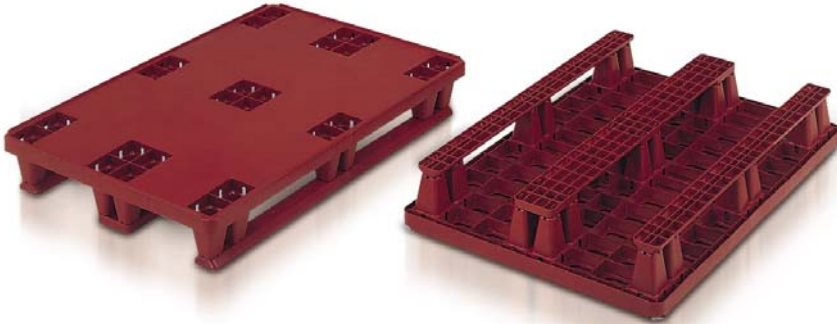


○ key features and benefits

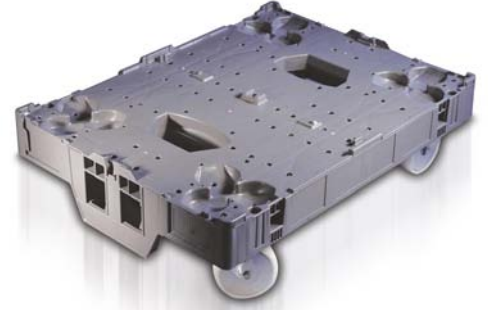
- Broad range to suit basic, medium and heavy duty applications
- Extreme load bearing
- Conforms to the strictest hygiene standards
- Environmentally sound
- RFID ready
- Highly durable
- Improved health and safety to reduce risk of injury
- Work with all standard handling equipment
- Option for merchandising.



STORAGE DESIGN LIMITED TEL: 01446 772614 info@storage-design.co.uk www.storage-design.co.uk



medium duty pallets – packpal



dollies

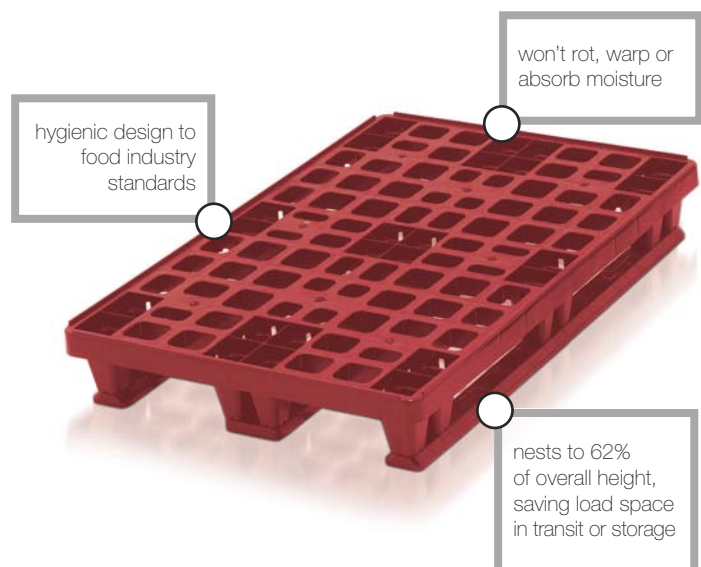
○ packpal

Packpal does everything the traditional wooden pallet does. And more.

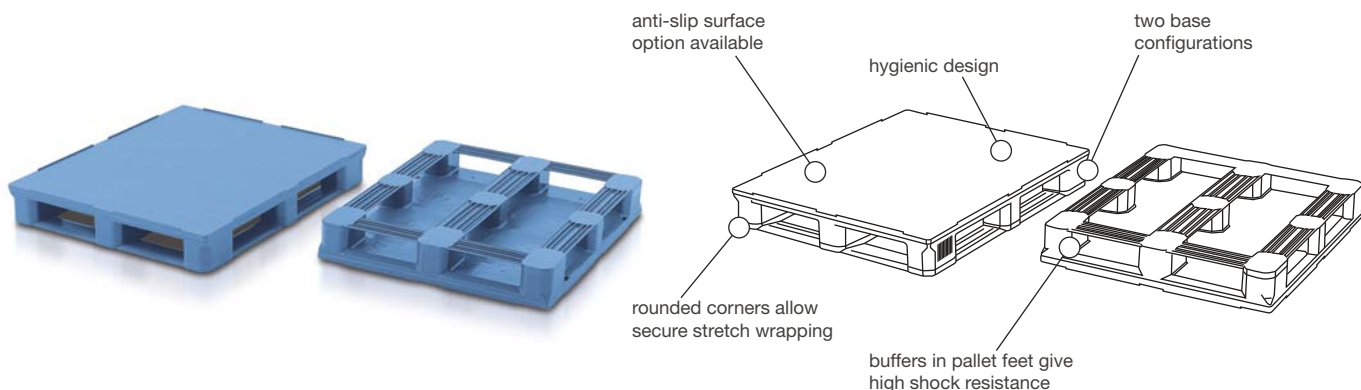


The 100% recyclable design is light but strong. Made to cope with the rigours of the intense environment of the warehouse and supply chain. Built to withstand clumsy handling by a forklift. In all weathers.

Empty pallets with nine feet nest to 62% of overall height, saving valuable space on return transport (one stack with 34 nested pallets measures less than two metres). And Packpal pallets with six perimeter runners can be used for racking evenly distributed loads of up to 700kg (depending on type and configuration of load).



STORAGE DESIGN LIMITED TEL: 01446 772614 info@storage-design.co.uk www.storage-design.co.uk



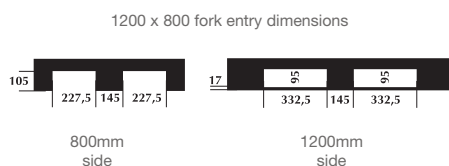
Maestro – a range of high performance heavy duty pallets.

○ 3L300 / MAL30004

Pallet with three runners.
Smooth deck.

suitable for:

- pharmaceutical, logistic and food processing industry



Technical specification

Dim.	1200 x 800 x 158mm
Load Mobile	1200kg
Load Static	5000kg
Load Racking	1000kg
Weight	19kg
Material	HDPE
Colour	Blue, ivory

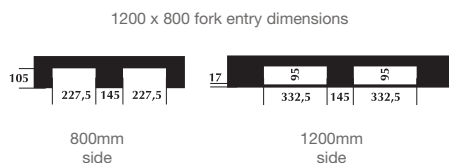


○ 3L302 / MAL30204

Pallet with three runners.
Smooth deck with 7mm collar.

suitable for:

- pharmaceutical, logistic and food processing industry



Technical specification

Dim.	1200 x 800 x 165mm
Load Mobile	1200kg
Load Static	5000kg
Load Racking	1000kg
Weight	19kg
Material	HDPE
Colour	Blue, ivory

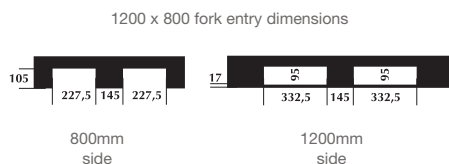


○ 3L350 / MAL35004

Reinforced pallet with three runners.
Smooth deck.

suitable for:

- pharmaceutical, logistic and food processing industry



Technical specification

Dim.	1200 x 800 x 158mm
Load Mobile	1500kg
Load Static	5000kg
Load Racking	1400kg
Weight	25kg
Material	HDPE
Colour	Grey

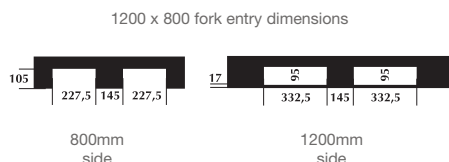


○ 3L352 / MAL35204

Reinforced pallet with three runners.
Smooth deck with 7mm collar.

suitable for:

- pharmaceutical, logistic and food processing industry



Technical specification

Dim.	1200 x 800 x 165mm
Load Mobile	1500kg
Load Static	5000kg
Load Racking	1400kg
Weight	25kg
Material	HDPE
Colour	Grey

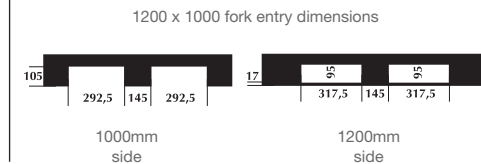


3M300 / MAM30004

Pallet with three runners.
Smooth deck.

suitable for:

- pharmaceutical, logistic and food processing industry



Technical specification

Dim.	1200 x 1000 x 158mm
Load Mobile	1500kg
Load Static	5000kg
Load Racking	1200kg
Weight	23.5kg
Material	HDPE
Colour	Blue

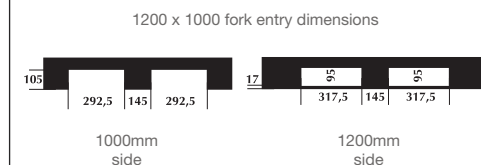


3M302 / MAM30204

Pallet with three runners.
Smooth deck with 7mm collar.

suitable for:

- pharmaceutical, logistic and food processing industry



Technical specification

Dim.	1200 x 1000 x 165mm
Load Mobile	1500kg
Load Static	5000kg
Load Racking	1200kg
Weight	23.5kg
Material	HDPE
Colour	Blue

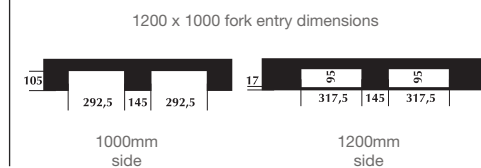


3M352 / MAM35204

Reinforced pallet with three runners.
Smooth deck with 7mm collar.

suitable for:

- pharmaceutical, logistic and food processing industry



Technical specification

Dim.	1200 x 1000 x 165mm
Load Mobile	2000kg
Load Static	5000kg
Load Racking	1600kg
Weight	30kg
Material	HDPE
Colour	Grey

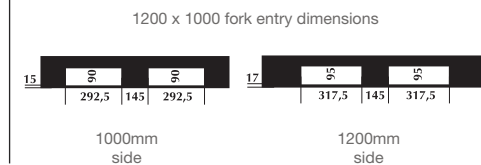


3M502 / MAM50204

Pallet with five runners. Smooth deck with 7mm collar.

suitable for:

- pharmaceutical, logistic and food processing industry



Technical specification

Dim.	1200 x 1000 x 165mm
Load Mobile	1500kg
Load Static	5000kg
Load Racking	1200kg
Weight	24.2kg
Material	HDPE
Colour	Blue

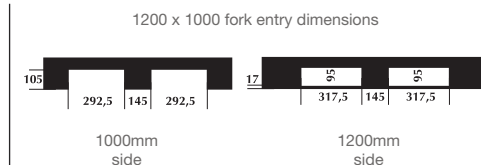


3L310 / MAL31004

Pallet with three runners and non-slip deck.

suitable for:

- pharmaceutical, logistic and food processing industry



Technical specification

Dim.	1200 x 1000 x 165mm
Load Mobile	600kg
Load Static	5000kg
Load Racking	500kg
Weight	19kg
Material	HDPE
Colour	Blue

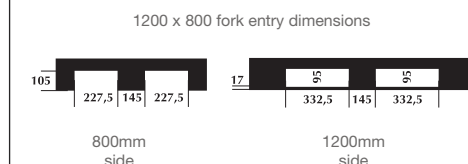


3L360 / MAL36004

Pallet with anti-slip deck and three runners reinforced by steel insert. Freezer grade quality.

suitable for:

- pharmaceutical, logistic and food processing industry



Technical specification

Dim.	1200 x 800 x 158mm
Load Mobile	1300kg
Load Static	5000kg
Load Racking	1200kg
Weight	25kg
Material	HDPE
Colour	Dark blue/grey

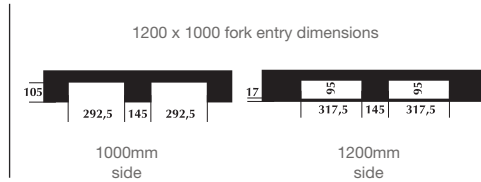


○ 3M310 / MAM31004

Pallet with three runners and non-slip deck.

suitable for:

- pharmaceutical, logistic and food processing industry



Technical specification

Dim.	1200 x 1000 x 158mm
Load Mobile	800kg
Load Static	5000kg
Load Racking	600kg
Weight	23.5kg
Material	HDPE
Colour	Blue

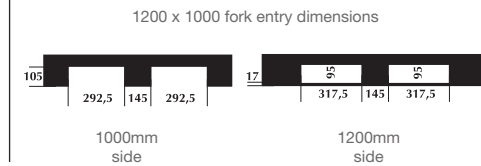


○ 3M360 / MAM36004

Pallet with anti-slip deck and three runners reinforced by steel insert. Freezer grade quality.

suitable for:

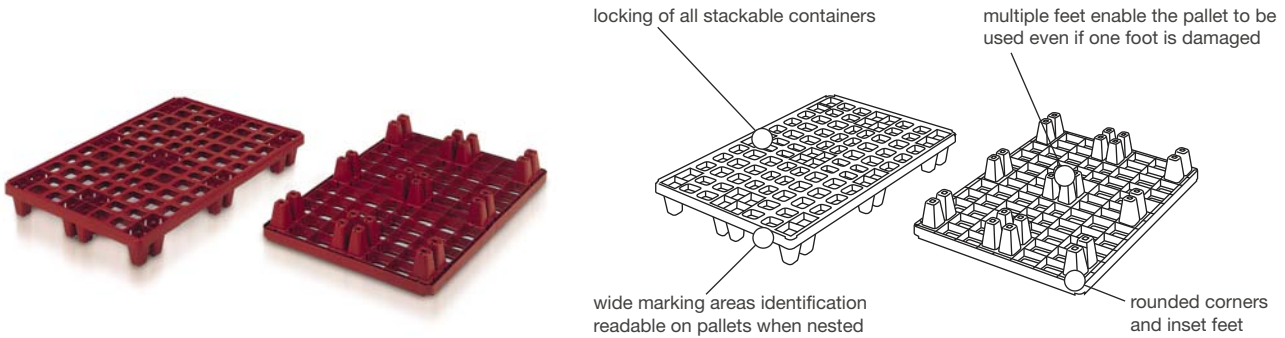
- pharmaceutical, logistic and food processing industry



Technical specification

Dim.	1200 x 1000 x 158mm
Load Mobile	1600kg
Load Static	5000kg
Load Racking	1400kg
Weight	25kg
Material	HDPE
Colour	Dark blue/grey

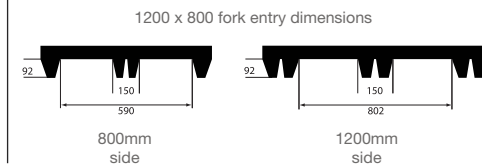




Packpal lightweight plastic pallet developed for storage and distribution.

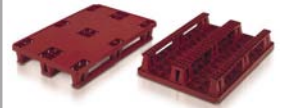
○ 3E002 / PKE00204

Pallet with nine feet.
Solid deck with collar.
suitable for:
• retail and industry distribution



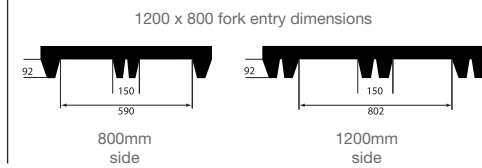
Technical specification

Dim.	1200 x 800 x 147mm
Load Mobile	650kg
Load Static	1500kg
Load Racking	N/A
Weight	7.0kg
Material	HDPE
Colour	Brown-red



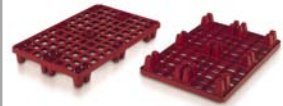
○ 3E003 / PKE00301

Pallet with nine feet.
Ventilated deck with collar.
suitable for:
• retail and industry distribution



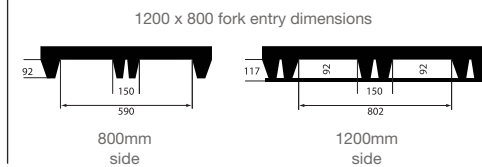
Technical specification

Dim.	1200 x 800 x 147mm
Load Mobile	650kg
Load Static	1500kg
Load Racking	N/A
Weight	5.9kg
Material	HDPE
Colour	Brown-red



○ 3E302 / PKE30204

Pallet with three runners.
Solid deck with collar.
suitable for:
• retail and industry distribution



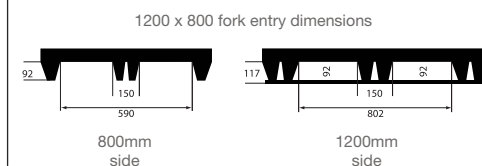
Technical specification

Dim.	1200 x 800 x 172mm
Load Mobile	1000kg
Load Static	1500kg
Load Racking	N/A
Weight	8.9kg
Material	HDPE
Colour	Brown-red



○ 3E303 / PKE30301

Pallet with three runners.
Ventilated deck with collar.
suitable for:
• retail and industry distribution



Technical specification

Dim.	1200 x 800 x 172mm
Load Mobile	1000kg
Load Static	1500kg
Load Racking	N/A
Weight	7.8kg
Material	HDPE
Colour	Brown-red



○ 3E502 / PKE50204

Pallet with perimeter runners.
Solid deck with collar.
suitable for:

- retail distribution

Technical specification

Dim.	1200 x 800 x 172mm
Load Mobile	1200kg
Load Static	1500kg
Load Racking	700kg
Weight	10.3kg
Material	HDPE
Colour	Brown-red



○ 3E503 / PKE50301

Pallet with perimeter runners.
Ventilated deck with collar.
suitable for:

- retail distribution

Technical specification

Dim.	1200 x 800 x 172mm
Load Mobile	1200kg
Load Static	1500kg
Load Racking	700kg
Weight	8.9kg
Material	HDPE
Colour	Brown-red



○ 3E509 / PKE50901

Pallet with perimeter runners.
Ventilated deck.
suitable for:

- retail distribution

Technical specification

Dim.	1200 x 800 x 190mm
Load Mobile	1200kg
Load Static	1500kg
Load Racking	700kg
Weight	9.3kg
Material	HDPE
Colour	Brown-red



○ 3F002 / PAF00204

Pallet with nine feet.
Solid deck with collar.
suitable for:

- retail and industry distribution

Technical specification

Dim.	1200 x 1000 x 147mm
Load Mobile	650kg
Load Static	1500kg
Load Racking	N/A
Weight	8.9kg
Material	HDPE
Colour	Brown-red



○ 3F003 / PKF00301

Pallet with nine feet.
Ventilated deck with collar.
suitable for:

- retail and industry distribution

Technical specification

Dim.	1200 x 1000 x 147mm
Load Mobile	650kg
Load Static	1500kg
Load Racking	N/A
Weight	7.3kg
Material	HDPE
Colour	Brown-red



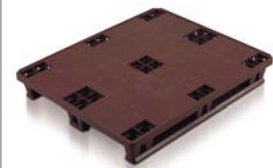
○ 3F302 / PKF30204

Pallet with three runners.
Solid deck with collar.
suitable for:

- retail and industry distribution

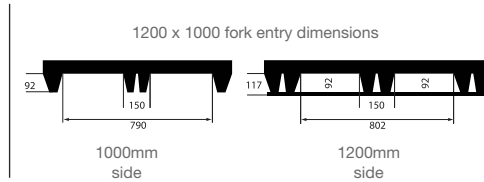
Technical specification

Dim.	1200 x 1000 x 172mm
Load Mobile	650kg
Load Static	1500kg
Load Racking	N/A
Weight	10.9kg
Material	HDPE
Colour	Brown-red



○ 3F303 / PKF30301

Pallet with three runners.
Ventilated deck with collar.
suitable for:
• retail and industry distribution



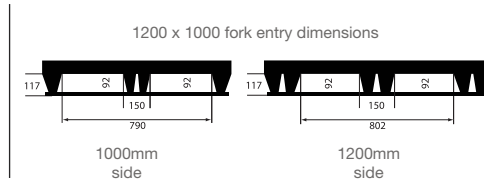
Technical specification

Dim.	1200 x 1000 x 172mm
Load Mobile	650kg
Load Static	1500kg
Load Racking	N/A
Weight	9.3kg
Material	HDPE
Colour	Brown-red



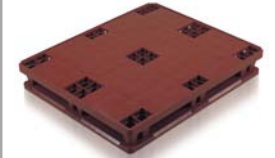
○ 3F502 / PKF50204

Pallet with perimeter runners.
Ventilated deck with collar.
suitable for:
• retail distribution



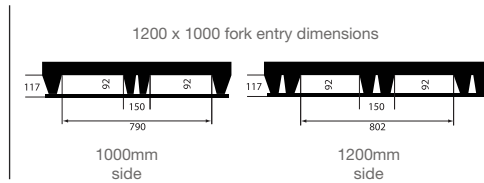
Technical specification

Dim.	1200 x 1000 x 172mm
Load Mobile	1200kg
Load Static	1500kg
Load Racking	700kg
Weight	13.5kg
Material	HDPE
Colour	Brown-red



○ 3F503 / PKF50301

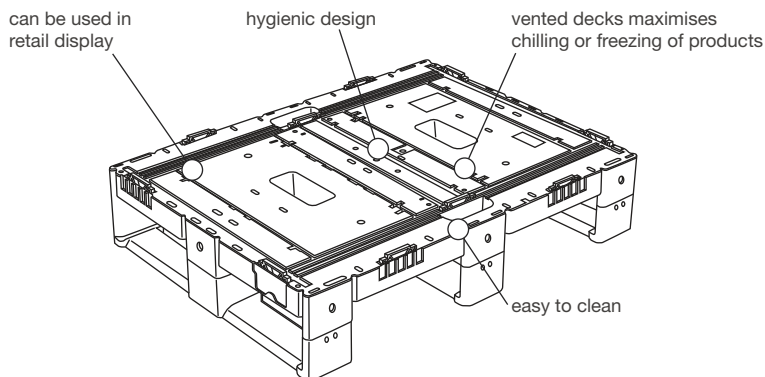
Pallet with perimeter runners.
Ventilated deck with collar.
suitable for:
• retail distribution



Technical specification

Dim.	1200 x 1000 x 172mm
Load Mobile	1200kg
Load Static	1500kg
Load Racking	700kg
Weight	11.9kg
Material	HDPE
Colour	Brown-red

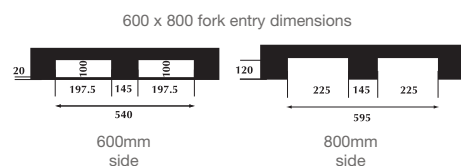




Pallets for a variety of applications.

○ 3G301 / PAG30101

Pallet with three runners.
Ventilated deck.
suitable for:
• logistic and automotive industry



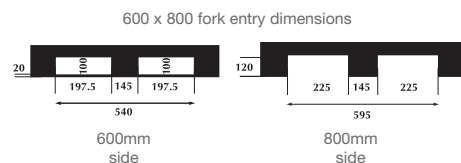
Technical specification

Dim.	800 x 600 x 160mm
Load Mobile	750kg
Load Static	2000kg
Load Racking	N/A
Weight	6.2kg
Material	HDPE
Colour	Grey



○ 3G303 / PAG30301

Pallet with three runners.
Ventilated deck with 7mm collar.
suitable for:
• logistic and automotive industry



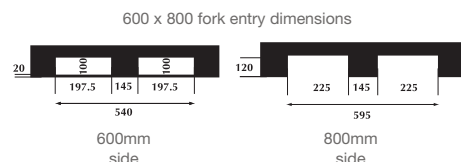
Technical specification

Dim.	800 x 600 x 167mm
Load Mobile	750kg
Load Static	2000kg
Load Racking	N/A
Weight	6.2kg
Material	HDPE
Colour	Grey



○ 3G305 / PAG30501

Pallet with three runners.
Ventilated deck with 20mm extended collar (collar off-set for full 800 x 600mm deck).
suitable for:
• logistic and automotive industry



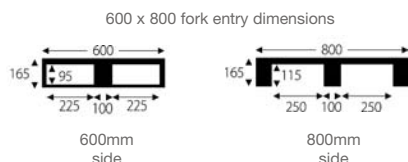
Technical specification

Dim.	816 x 616 x 180mm
Load Mobile	750kg
Load Static	2000kg
Load Racking	N/A
Weight	6.4kg
Material	HDPE
Colour	Grey



○ PA262804

Half size display pallet with pop-up container location features, making this ideal for both general merchandising and carrying plastic boxes.
suitable for:
• retail distribution



Technical specification

Ext. Top Dim.	800 x 600 x 165mm
Load Mobile	500kg
Load Static	1000kg
Load Racking	N/A
Weight	7kg
Material	Polypropylene
Colour	Black

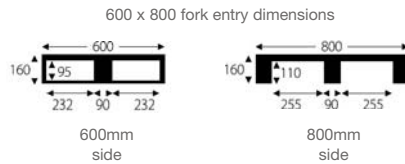


○ PA860501

Automotive heavy duty half size pallet with retaining rim with special stacking locking system to ensure safe transportation of stacked pallets when empty.

suitable for:

- automotive industry



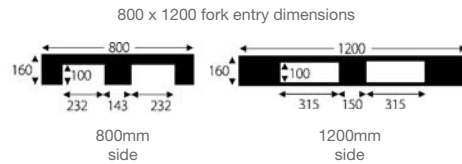
Technical specification

Ext. Top Dim.	800 x 600 x 160mm
Load Mobile	500kg
Load Static	2000kg
Load Racking	N/A
Weight	7.5kg
Material	HDPE
Colour	Black



○ PA004004

Outer rim and central location points available for Euro containers.



Technical specification

Ext. Top Dim.	1200 x 800 x 160mm
Load Mobile	1250kg
Load Static	5950kg
Load Racking	850kg
Weight	18kg
Material	HDPE
Colour	Grey

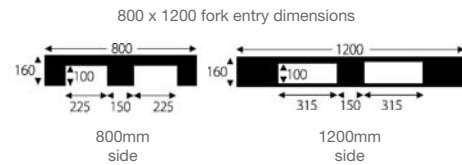


○ PA000601

High load bearing Euro sized pallet with anti-slip top deck inserts to improve load safety.

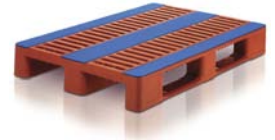
suitable for:

- industry with high performance



Technical specification

Ext. Top Dim.	1200 x 800 x 160mm
Load Mobile	1250kg
Load Static	5000kg
Load Racking	1000kg
Weight	18.5kg
Material	HDPE
Colour	Tan/blue

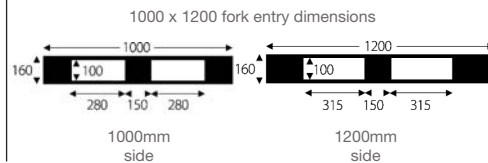


○ PA000201

Hygienic high performance pallet ideally suited to pharmaceutical and food industries.

suitable for:

- pharmaceutical and food industries



Technical specification

Ext. Top Dim.	1200 x 1000 x 160mm
Load Mobile	1250kg
Load Static	5000kg
Load Racking	850kg
Weight	22kg
Material	HDPE
Colour	Light grey

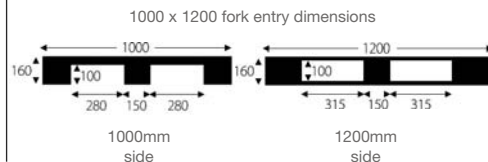


○ PA000232

Manufactured in recycled HDPE for economy, this pallet still gives a robust high performance within the industrial sector.

suitable for:

- industry



Technical specification

Ext. Top Dim.	1200 x 1000 x 160mm
Load Mobile	1000kg
Load Static	5000kg
Load Racking	Not suitable
Weight	19.5kg
Material	HDPE
Colour	Black

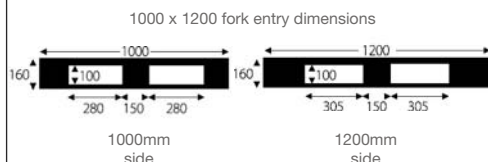


○ PA003401

The heavy duty all plastics perimetric pallet with unique anti-slip top deck for increased load safety.

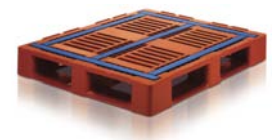
suitable for:

- automotive industry



Technical specification

Ext. Top Dim.	1200 x 1000 x 160mm
Load Mobile	1250kg
Load Static	5000kg
Load Racking	1000kg
Weight	23kg
Material	HDPE
Colour	Tan/blue

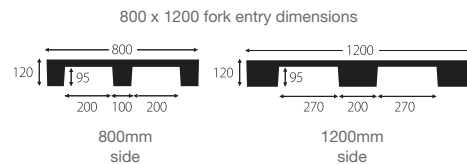


○ PA586301

Basic nesting pallet with considerable space saving for return loads. Available with runner base.

suitable for:

- distribution



Technical specification

Ext. Top Dim.	1200 x 800 x 120mm
Load Mobile	250kg
Load Static	500kg
Load Racking	N/A
Weight	4.23kg
Material	Polypropylene
Colour	Black

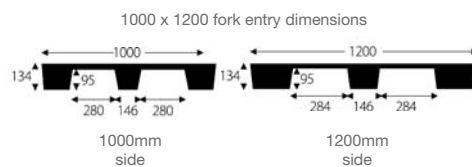


○ PA005801

Basic nesting pallet with considerable space saving for return loads.

suitable for:

- distribution



Technical specification

Ext. Top Dim.	1200 x 1000 x 134mm
Load Mobile	800kg
Load Static	1000kg
Load Racking	N/A
Weight	10kg
Material	HDPE
Colour	Black



○ 06700 / LIH70004

Lid for 800 x 600mm distribution pallets. Compatible with Eureka, Odette and European standard range stacking containers.



lid in use

Technical specification

Dim.	820 x 620 x 78mm
Weight	2.1kg
Material	Polypropylene
Colour	Black



○ 06772 / LIM77204

Lid for 800 x 600mm Distribution Pallets. Compatible with Eureka, Odette and European Standard Range stacking containers. With adjustable straps to secure loads from 400 to 900mm high.

Technical specification

Dim.	820 x 620 x 78mm
Weight	2.1kg
Material	Polypropylene
Colour	Black



○ 06800 / LIF80004

Lid for 1200 x 800mm Packpal pallets with three runners. Compatible with Eureka, Odette and European standard range stacking containers.

Technical specification

Dim.	1220 x 813 x 53mm
Weight	3.8kg
Material	Polypropylene
Colour	Black

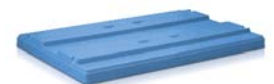


○ KL120804

1200 x 800mm lid, designed for use with KLT containers.

Technical specification

Dim.	1200 x 800 x 94mm
Weight	6.1kg
Material	Polypropylene
Colour	Blue



○ KL121804

1200 x 800mm lightweight lid, designed for use with KLT containers.

Technical specification

Dim. 1200 x 800 x 57mm
Weight 3.88kg
Material Polypropylene
Colour Blue



○ KL121004

1200 x 1000mm lid, designed for use with KLT containers.

Technical specification

Dim. 1200 x 1000 x 67mm
Weight 9.35kg
Material Polypropylene
Colour Blue



○ 06996 / LIG99604

Lid for 1200 x 1000mm Packpal pallets with three runners. Compatible with Eureka, Odette and European standard range stacking containers.

Technical specification

Dim. 1210 x 1010 x 45mm
Weight 6.2kg
Material Polypropylene
Colour Black, green



○ 06972 / LIL97204

Lid for 1200 x 1000mm Maestro and Alligrip pallets with three runners. Compatible with Eureka, Odette and European standard range stacking containers. With adjustable straps.

Technical specification

Dim. 1210 x 1010 x 45mm
Weight 6.2kg
Material Polypropylene
Colour Black



○ CO101501

Pallet collar for use with 1200 x 1000mm pallets.

Technical specification

Ext.Dim. 1225 x 1025 x 352mm
Int.Dim. 1160 x 960 x 300mm
Folded Dim. 1150 x 130 x 352mm
Load 500kg
Weight 6.2kg
Material Polypropylene with glass reinforced hinges
Colour Black



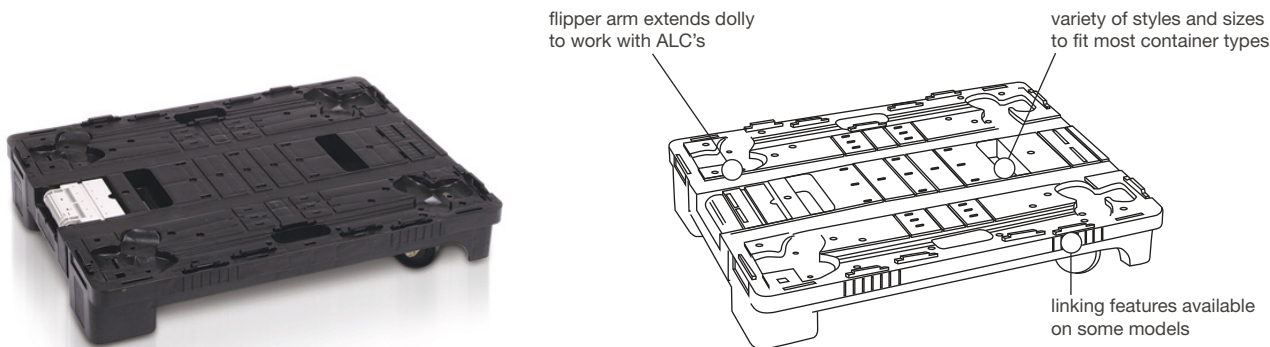
○ CO025104

Pallet collar for use with 1200 x 800mm pallets.

Technical specification

Ext.Dim. 1200 x 800mm
Load 500kg
Weight 6.2kg
Material Polypropylene with glass reinforced hinges
Colour Black





An extensive range of wheeled dollies designed to enable crates, trays and boxes to be manoeuvred safely and efficiently in the workplace.

○ 91005 / DOJ90501

Nylon wheels on galvanised mountings.
works with:
a range of standard 600 x 400mm containers.

Technical specification	
Dim.	604 x 402 x 162mm
Castors Ø	100mm (4 swivel)
Weight	4kg
Material	HDPE
Colour	Red



○ DO641501

Dolly for Euro containers.
works with:
a range of standard 600 x 400mm containers.

Technical specification	
Ext.Top Dim.	600 x 400 x 152mm
Int.Loc.Dim	568 x 364mm
Castors Ø	75mm (4 swivel)
Load	180kg
Weight	N/A
Material	MDPE
Colour	Black



○ DO484901

Dolly linkable for attached lid Euro and Galia containers.
works with:
a range of standard 600 x 400mm containers.

Technical specification	
Ext.Top Dim.	600 x 400 x 152mm
Int.Loc.Dim	570 x 370mm
Castors Ø	100mm (4 swivel)
Load	250kg
Weight	4.2kg
Material	MDPE
Colour	Black



○ 99602 / DOTC0201

Dolly for Euro containers.
works with:
a range of standard 600 x 400mm containers.

Technical specification	
Dim.	623 x 423 x 125mm
Int.Loc.Dim	610 x 410mm
Load	250kg
Castors Ø	100mm (4 swivel)
Weight	3.3kg
Colour	Red



○ DO684301

Single dolly for imperial sized vegetable crate and large attached lid container.
works with:
DH740002, 10A82, 10A83.

Technical specification	
Ext.Top Dim.	680 x 436 x 200mm
Int.Loc.Dim	640 x 400mm
Castors Ø	100mm (4 swivel)
Load	180kg
Weight	N/A
Material	MDPE
Colour	Grey



○ 97032 / DOM93204

Folding handles with automatic lock. Two fixed, two swivel castors. Solid rubber tyres. Black epoxy coated steel handle. HDPE platform with non-slip surface.

Technical specification	
Dim.	750 x 400 x 960mm
Platform Dim.	600 x 400mm
Folded Dim.	860 x 400 x 250mm
Castors Ø	100mm
Load	210kg
Material	HDPE platform with non-slip surface
Colour	Beige



○ DO701501

Dolly linkable for stack and nest containers.
works with:
a range of standard 600 x 400mm containers.

Technical specification	
Ext.Top Dim.	604 x 454 x 195mm
Int.Loc.Dim	600 x 400mm
Castors Ø	100mm (4 swivel)
Load	250kg
Weight	6.15
Material	Polypropylene
Colour	Grey



○ 97030 / DOM93004

Two fixed, two swivel castors. Solid rubber tyres. HDPE platform with non-slip surface.

Technical specification	
Dim.	600 x 400 x 165mm
Castors Ø	100mm
Load	210kg
Material	HDPE platform with non-slip surface
Colour	Red



○ DO795904

Universal double dolly with brake mechanism.
works with:
Attached lids,
Euro boxes,
Gondola end display,
Maxifolds,
Maxinests

Technical specification

Ext.Top Dim.	798 x 598 x 171mm
Int.Loc.Dim	600 x 400mm
Castors Ø	100mm (with brake)
Load	500kg
Weight	9.7kg
Material	Polypropylene
Colour	Grey



Handle available:
HO008604

○ DO301801

Dolly for confectionery trays.
works with:
RB318506 and most
30" x 18" trays

Technical specification

Ext.Top Dim.	762 x 457 x 202mm
Int.Loc.Dim	720 x 415mm
Castors Ø	75mm (4 swivel)
Load	150kg
Weight	N/A
Material	MDPE
Colour	Blue



○ DO701901

Suitable for most
600 x 400 and 400 x
300mm containers.
Easy to use handle is
available.
works with:
Euro boxes,
Maxifolds,
Maxinests,
Stack nests

Technical specification

Ext.Top Dim.	800 x 600 x 260mm
Int.Loc.Dim	600 x 400mm
Castors Ø	100mm (with brake)
Load	500kg
Weight	9.7kg
Material	Polypropylene
Colour	Grey



Handle available:
HO008604

○ DO322601

Dolly for bakery trays.
works with:
SN150201

Technical specification

Ext.Top Dim.	822 x 676 x 142mm
Int.Loc.Dim	749 x 603 x 40mm
Castors Ø	75mm (4 swivel)
Load	80kg
Weight	N/A
Material	MDPE
Colour	Blue



○ DO862501

Double dolly with
detachable handle.
Two fixed, two swivel
castors.
works with:
Euro boxes,
Maxifolds,
Maxinests

Technical specification

Ext.Top Dim.	800 x 600 x 255mm
Int.Loc.Dim	355 x 560mm
Castors Ø	125mm
Load	360kg
Weight	N/A
Material	MDPE
Colour	Black



Handle available:
HO421101

○ DO302001

Dolly for bakery trays.
works with:
SN121201

Technical specification

Ext.Top Dim.	762 x 508 x 207mm
Int.Loc.Dim	724 x 471mm
Castors Ø	100mm (4 swivel)
Load	135kg
Weight	N/A
Material	MDPE
Colour	Black

○ 99822 /
DOTE2201

Rubber wheels on
galvanised mountings.
Two fixed, two swivel
castors.

Technical specification

Ext.Top Dim.	825 x 620 x 155mm
Castors Ø	100mm
Load	250kg
Weight	5.5kg
Material	HDPE
Colour	Red



○ DO867701

Double dolly with
detachable handle.
Two fixed, two swivel
castors.
works with:
DH740002, 10A83,
SN704608, 10A82,

Technical specification

Ext.Top Dim.	860 x 678 x 255mm
Int.Loc.Dim	400 x 638mm x2
Castors Ø	125mm
Load	360kg
Weight	N/A
Material	MDPE
Colour	Grey



Handle available:
HO421101

○ DO171701

Dolly for bakery tubs.
works with:
TB400004, TB750004,
TB110004, TB160004,
TB308204

Technical specification

Ext.Top Dim.	432 x 432 x 184mm
Int.Loc.Dim	385mm
Castors Ø	75mm (4 swivel)
Load	120kg
Weight	N/A
Material	MDPE
Colour	Blue

○ 96750 /
DOR75001

Technical specification

Ext.Dim.	820 x 720 x 1888mm
Cage Ht.	1700mm
Load	450kg
Weight	26.6kg
Material	HDPE base
Colour	Red

○ 96550 /
DOR55001

Technical specification

Ext.Dim.	820 x 720 x 1688mm
Cage Ht.	1500mm
Load	450kg
Weight	25.5kg
Material	HDPE base
Colour	Red



○ 910A8

As dolly ref. 91005,
with handle.

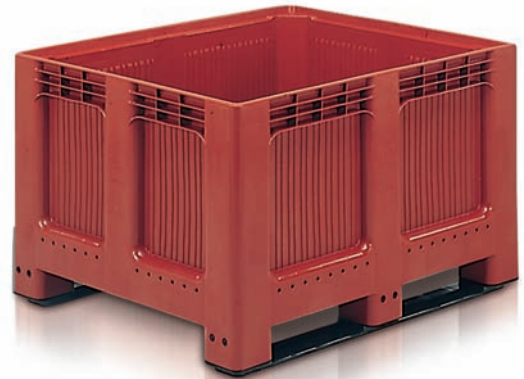
Technical specification

Dim.	604 x 402 x 965mm
Castors Ø	100mm (4 swivel)
Weight	8.9kg
Material	HDPE base
Colour	Red





box pallets – dolav®



box pallets – geobox

Large containers for bulk handling, storage and transport in tough environments with many industrial applications.

○ product story

Box pallets – these super performance products would not exist were it not for innovation in one-piece moulding. We use a structural foam polyethylene (Dolav) and HDPE (Geobox) that offers comparable strength and resistance to impact damage, allowing our boxes to contain vast quantities on the move.

FLCs – another product that has caused a minor revolution in the supply chain. These robust, modular units are in active service the full length of the supply chain, built to withstand the rigours of transit and yet with the flexibility to fold, stack and contain dunnage systems.

Sleeve packs – space is always at a premium, whether it be in the warehouse or in transit. These three piece bulk containers enable cavernous storage when in use and yet fold into little over a quarter of their original size when being stored. The sleeves are designed to be used repeatedly.



○ key features and benefits

Box pallets

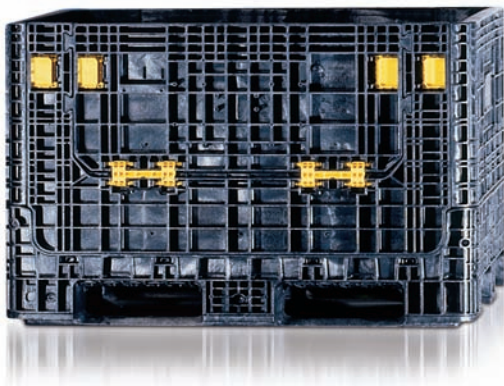
- Resistant to chemical corrosion and UV attack
- Big and tough yet light
- Can be colour coded to reduce losses
- Range of sizes

FLCs

- Folding design improves in-plant efficiency
- Long lasting in the toughest environments
- Revolutionises bulk loading applications and dunnage
- Ergonomic, cleaner, simpler, less wasteful

Sleeve packs

- Easier, cleaner and safer than disposable packaging
- Space saving and light weight
- Improve efficiency
- Extremely versatile
- Suitable for branding and company messages



folding large containers (FLCs)



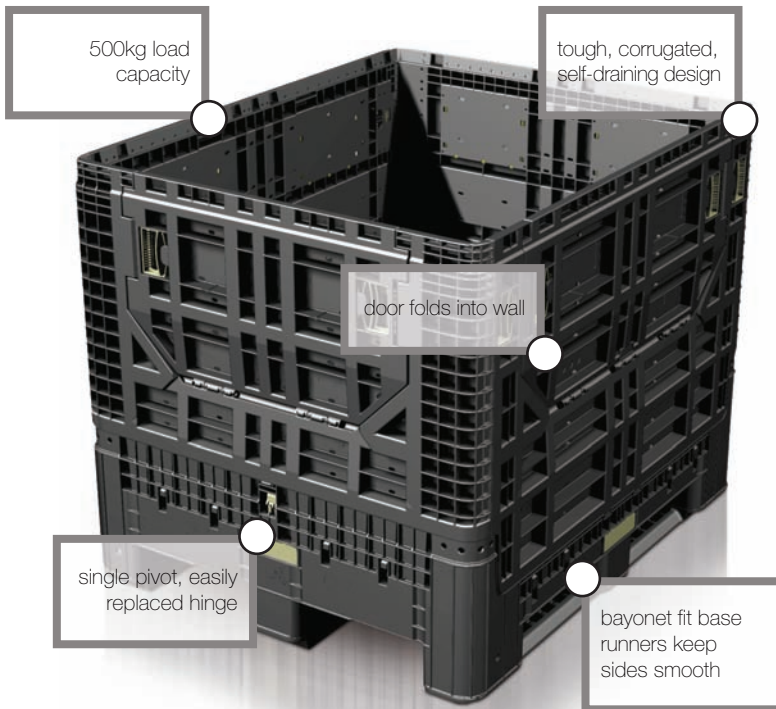
sleeve packs – boxerpac

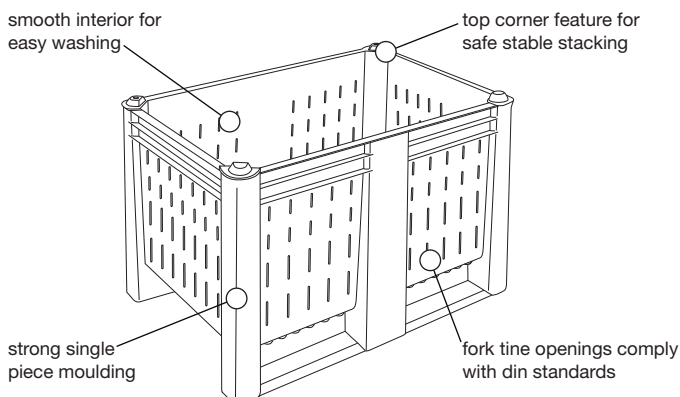
new tytan

The new Tytan is the next generation folding large container, developed as a worthy successor to the LINPAC Allibert FLC975, which has enjoyed a loyal following and over 13 years of active service.

Although a complete from-scratch re-design, Tytan has been designed to work seamlessly with the FLC975 so that its introduction can be phased.

We confidently predict that this new, 100% recyclable, 100% polypropylene design (no metal parts at all) will be even more popular than the product it replaces.





High performance, hygienic Dolav box pallets suitable for a variety of applications.

DL120801

Dolav box pallet made from high molecular weight structural foam HDPE for extra toughness.

suitable for:

- meat storage
- fruit and vegetable storage
- waste products



Lid
LI000304



Stacked
1480mm

Technical specification

Ext.Top Dim.	1200 x 800 x 740mm
Int.Base Dim.	1120 x 720 x 600mm
Load	4000kg a stack 6 high
Capacity	500 litres
Weight	31.5kg
Material	HDPE
Colour	Yellow



DL120804

Dolav box pallet made from high molecular weight structural foam HDPE for extra toughness.

suitable for:

- meat storage
- fruit and vegetable storage
- waste products



Lid
LI000304



Stacked
1480mm

Technical specification

Ext.Top Dim.	1200 x 800 x 740mm
Int.Base Dim.	1120 x 720 x 600mm
Load	4000kg a stack 6 high
Capacity	500 litres
Weight	31.5kg
Material	HDPE
Colour	Yellow



DL121032

Dolav box pallet made from high molecular weight structural foam HDPE for extra toughness.

suitable for:

- meat storage
- fruit and vegetable storage
- waste products



Lid
LI000204



Stacked
1480mm

Technical specification

Ext.Top Dim.	1200 x 1000 x 740mm
Int.Base Dim.	1120 x 920 x 600mm
Load	4000kg a stack 6 high
Capacity	600 litres
Weight	36.5kg
Material	HDPE
Colour	Grey



DL121033

Dolav box pallet made from high molecular weight structural foam HDPE for extra toughness.

suitable for:

- meat storage
- fruit and vegetable storage
- waste products



Lid
LI000204



Stacked
1480mm

Technical specification

Ext.Top Dim.	1200 x 1000 x 740mm
Int.Base Dim.	1120 x 920 x 600mm
Load	4000kg a stack 6 high
Capacity	600 litres
Weight	36.5kg
Material	HDPE
Colour	Grey



○ DL121001

Dolav box pallet made from high molecular weight structural foam HDPE for extra toughness.

suitable for:

- meat storage
- fruit and vegetable storage
- waste products



Lid
LI000204



Stacked
1480mm

Technical specification

Ext.Top Dim.	1200 x 1000 x 740mm
Int.Base Dim.	1120 x 920 x 600mm
Load	4000kg a stack 6 high
Capacity	600 litres
Weight	36.5kg
Material	HDPE
Colour	Yellow



○ DL121004

Dolav box pallet made from high molecular weight structural foam HDPE for extra toughness.

suitable for:

- meat storage
- fruit and vegetable storage
- waste products



Lid
LI000204

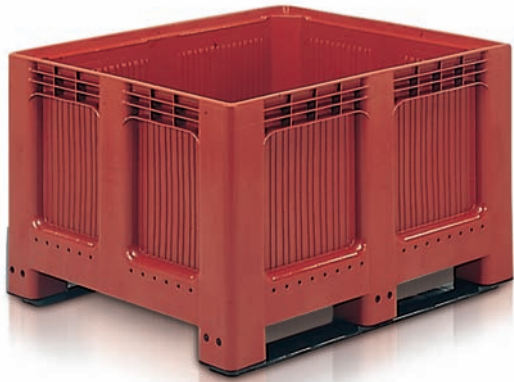


Stacked
1480mm

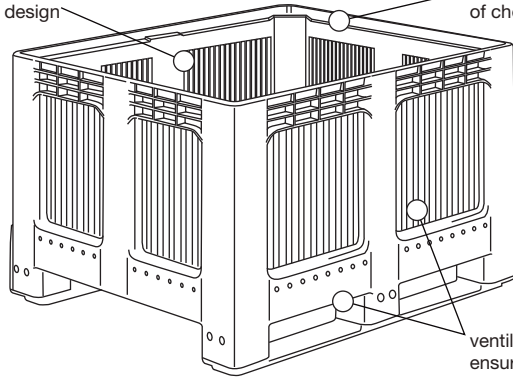
Technical specification

Ext.Top Dim.	1200 x 1000 x 740mm
Int.Base Dim.	1120 x 920 x 600mm
Load	4000kg a stack 6 high
Capacity	600 litres
Weight	36.5kg
Material	HDPE
Colour	Yellow, red, blue





Hygienic impact resistant design



impervious to most forms of chemical erosion

ventilated sides and base ensure good airflow

Geobox pallet boxes, strong and durable for intensive use.

○ **27250 / GB725004**

Geobox with two runners base.
suitable for:

- meat storage
- fruit and vegetable storage
- waste products



Stacked
1304mm

Technical specification

Ext. Dim.	1000 x 600 x 662mm
Int. Dim.	929 x 544 x 519mm
Load	450kg
Max 10 high	4.5 tonnes full load
Capacity	260 litres
Weight	13.5kg
Material	HDPE
Colour	Brown-red



○ **27270 / GB727004**

Geobox with six feet base.
suitable for:

- meat storage
- fruit and vegetable storage
- waste products



Stacked
1304mm

Technical specification

Ext. Dim.	1000 x 600 x 662mm
Int. Dim.	929 x 544 x 519mm
Load	450kg
Max 10 high	4.5 tonnes full load
Capacity	260 litres
Weight	12.7kg
Material	HDPE
Colour	Brown-red



○ **27400 / GB740004**

Geobox with two runners.
suitable for:

- meat storage
- fruit and vegetable storage
- waste products



Lid
64401 /
LIC40101



Stacked
1144mm

Technical specification

Ext. Dim.	1200 x 1000 x 580mm
Int. Dim.	1110 x 910 x 375mm
Load	450kg
Max 10 high	4.5 tonnes full load
Capacity	373 litres
Weight	29kg
Material	HDPE
Colour	Brown-red



○ **27401 / GB740101**

Geobox with two runners base.
suitable for:

- meat storage
- fruit and vegetable storage
- waste products



Lid
64401 /
LIC40101



Stacked
1144mm

Technical specification

Ext. Dim.	1200 x 1000 x 580mm
Int. Dim.	1110 x 910 x 375mm
Load	450kg
Max 10 high	4.5 tonnes full load
Capacity	373 litres
Weight	28kg
Material	HDPE
Colour	Brown-red



○ 27600 / GB760004

Geobox with two runners base.
suitable for:

- meat storage
- fruit and vegetable storage
- waste products



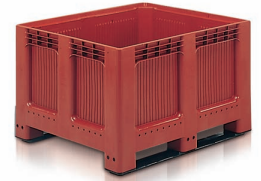
Lid
64401 /
LIC40101



Stacked
1480mm

Technical specification

Ext. Dim.	1200 x 1000 x 750mm
Int. Dim.	1110 x 910 x 545mm
Load	450kg
Max 10 high	4.5 tonnes full load
Capacity	543 litres
Weight	34kg
Material	HDPE
Colour	Brown-red



○ 27601 / GB760101

Geobox with two runners base.
suitable for:

- meat storage
- fruit and vegetable storage
- waste products



Lid
64401 /
LIC40101



Stacked
1480mm

Technical specification

Ext. Dim.	1200 x 1000 x 750mm
Int. Dim.	1110 x 910 x 545mm
Load	450kg
Max 10 high	4.5 tonnes full load
Capacity	543 litres
Weight	33kg
Material	HDPE
Colour	Brown-red



○ 27602 / GB760204

Geobox with six feet base.
suitable for:

- meat storage
- fruit and vegetable storage
- waste products



Lid
64401 /
LIC40101



Stacked
1480mm

Technical specification

Ext. Dim.	1200 x 1000 x 750mm
Int. Dim.	1110 x 910 x 545mm
Load	450kg
Max 10 high	4.5 tonnes full load
Capacity	543 litres
Weight	33kg
Material	HDPE
Colour	Brown-red



○ 27603

Geobox with six feet base.
suitable for:

- meat storage
- fruit and vegetable storage
- waste products



Lid
64401 /
LIC40101

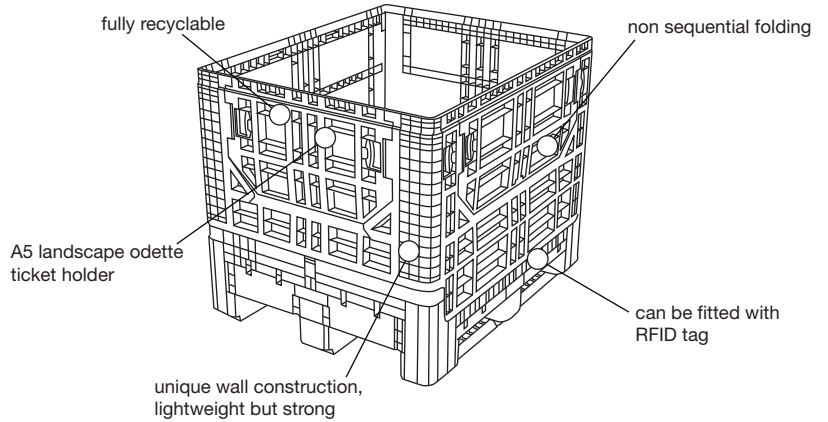


Stacked
1480mm

Technical specification

Ext. Dim.	1200 x 1000 x 750mm
Int. Dim.	1110 x 910 x 545mm
Load	450kg
Max 10 high	4.5 tonnes full load
Capacity	543 litres
Weight	32kg
Material	HDPE
Colour	Brown-red





Containers for heavy weight and long-lasting performance.

○ FLA97520

Tytan – a folding pallet container for long lasting performance in the most demanding of environments.

suitable for:

- automotive industry
- caps and closures
- wine bags



Dust Cover
LI097504



Lid
LI09759D



Stacked
1920mm



Folded
62%

Technical specification

Ext. Dim.	1197 x 997 x 975mm
Int. Dim.	1121 x 921 x 775mm
Load	500kg
Capacity	800 litres
Weight	48kg
Material	Polypropylene
Colour	Black



○ FL059518

Exceptionally strong folding box pallet.

suitable for:

- heavy engineering
- automotive parts



Dust Cover
LI097504



Lid
LI09759D



Stacked
1160mm



Folded
37%

Technical specification

Ext. Top Dim.	1200 x 1000 x 595mm
Int. Base Dim.	1118 x 918 x 381mm
Load	500kg x5 high
Capacity	384 litres
Weight	43.5kg
Material	HDPE
Colour	Black with blue sides



○ FL097520

A folding pallet container for long lasting performance in the most demanding of environments.

suitable for:

- automotive industry
- caps and closures
- wine bags



Dust Cover
LI097504



Lid
LI09759D



Stacked
1920mm



Nested

Technical specification

Ext. Top Dim.	1200 x 1000 x 975mm
Int. Base Dim.	1118 x 918 x 760mm
Load	500kg x5 high
Capacity	780 litres
Weight	63.9kg
Material	HDPE
Colour	Black



○ RP323420

Ropak – hinged drop doors are available on the 819mm side and two base options are available. Four-way forklift entry and conveyable base with two-way forklift entry.

suitable for:

- heavy engineering
- automotive parts



Lid
LI303204



Stacked
1671mm



Folded
59%

Technical specification

Ext. Top Dim.	819 x 768 x 864mm
Int. Base Dim.	749 x 694 x 719mm
Load	907kg/unit
Capacity	360 litres
Weight	37kg
Material	HDPE
Colour	Black



○ RP323920

Ropak – hinged drop doors are available on the 819mm side and two base options are available. Four-way forklift entry and conveyable base with two-way forklift entry.

suitable for:

- heavy engineering
- automotive parts



Lid
LI303204



Stacked
1923mm



Folded
66%

Technical specification

Ext.Top Dim.	819 x 768 x 990mm
Int.Base Dim.	749 x 694 x 846mm
Load	907kg/unit
Capacity	430 litres
Weight	41kg
Material	HDPE
Colour	Black



○ RP402520

Ropak – drop door versions have an articulating hinge that allows the open door to lay flat against the side of the container for tighter, safer storage.

suitable for:

- heavy engineering
- automotive parts



Lid
LI404804



Stacked
1198mm



Folded
46%

Technical specification

Ext.Top Dim.	1201 x 1006 x 643mm
Int.Base Dim.	1107 x 914 x 498mm
Load	907kg/unit
Capacity	480 litres
Weight	59kg
Material	HDPE
Colour	Black



○ RP402920

Ropak – drop door versions have an articulating hinge that allows the open door to lay flat against the side of the container for tighter, safer storage.

suitable for:

- heavy engineering
- automotive parts



Lid
LI404804



Stacked
1430mm



Folded
54%

Technical specification

Ext.Top Dim.	1201 x 1006 x 759mm
Int.Base Dim.	1107 x 914 x 612mm
Load	907kg/unit
Capacity	590 litres
Weight	64kg
Material	HDPE
Colour	Black



○ RP403420

Ropak – drop door versions have an articulating hinge that allows the open door to lay flat against the side of the container for tighter, safer storage.

suitable for:

- heavy engineering
- automotive parts



Lid
LI404804



Stacked
1654mm



Folded
60%

Technical specification

Ext.Top Dim.	1201 x 1006 x 871mm
Int.Base Dim.	1107 x 914 x 859mm
Load	907kg/unit
Capacity	710 litres
Weight	72kg
Material	HDPE
Colour	Black



○ RP403920

Ropak – drop door versions have an articulating hinge that allows the open door to lay flat against the side of the container for tighter, safer storage.

suitable for:

- heavy engineering
- automotive parts



Lid
LI404804



Stacked
1914mm



Folded
65%

Technical specification

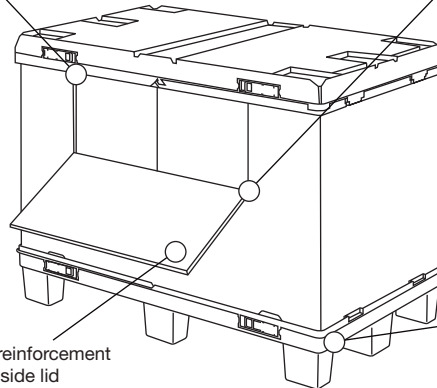
Ext.Top Dim.	1201 x 1006 x 1001mm
Int.Base Dim.	1107 x 914 x 859mm
Load	907kg/unit
Capacity	830 litres
Weight	77kg
Material	HDPE
Colour	Black





lid location points for interlocking
safe pallet stacking

locking latch attaches sleeve
to both base and lid



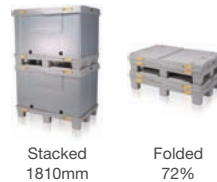
load bearing reinforcement
features on inside lid

choice of pallet base

Boxerpac is a versatile system providing outstanding volume for bulk storage and distribution.

○ BP120898 / BP120896

The standard Boxerpac comes with nine pallet feet, which locate into the lid feature when stacked. BP120898 version with solid plastic sleeve. BP120896 version with solid cardboard sleeve.



Stacked
1810mm

Folded
72%

Technical specification

Ext. Top Dim.	1200 x 800 x 910mm
Folded	1200 x 800 x 272mm
Int. Dim.	1140 x 740 x 710mm
Unit Load	500kg/unit
Capacity	600 litres
Weight	28kg
Material	Polypropylene
Colour	Grey



○ BP120899 / BP120897

The standard Boxerpac comes with nine pallet feet, which locate into the lid feature when stacked. BP120899 with two drop door plastic sleeve. BP120897 with 2 drop door cardboard sleeve.



Stacked
1810mm

Folded
72%

Technical specification

Ext. Top Dim.	1200 x 800 x 910mm
Folded	1200 x 800 x 272mm
Int. Dim.	1140 x 740 x 710mm
Unit Load	500kg/unit
Capacity	600 litres
Weight	28kg
Material	Polypropylene
Colour	Grey



○ BP12085H / BP12083H

The standard Boxerpac comes with three runner pallet base, which locate into the lid feature when stacked. BP12085H version with solid plastic sleeve. BP12083H with solid cardboard sleeve.



Stacked
1860mm

Folded
72%

Technical specification

Ext. Top Dim.	1200 x 800 x 930mm
Folded	1200 x 800 x 292mm
Int. Dim.	1140 x 740 x 710mm
Unit Load	500kg/unit
Capacity	600 litres
Weight	28kg
Material	Polypropylene
Colour	Grey



○ BP12086H / BP12084H

The standard Boxerpac comes with three runner pallet base, which locate into the lid feature when stacked. BP12086H version with two drop door plastic sleeve. BP12084H version with two drop door cardboard sleeve.



Stacked
1860mm

Folded
72%

Technical specification

Ext. Top Dim.	1200 x 800 x 930mm
Folded	1200 x 800 x 292mm
Int. Dim.	1140 x 740 x 710mm
Unit Load	500kg/unit
Capacity	600 litres
Weight	28kg
Material	Polypropylene
Colour	Grey



○ BP121098 / BP121096

The standard Boxerpac comes with nine pallet feet, which locate into the lid feature when stacked. BP121098 version with solid plastic sleeve. BP121096 version with solid cardboard sleeve.



Stacked
2190mm

Folded
72%

Technical specification

Ext. Top Dim.	1200 x 1000 x 1100mm
Folded	1200 x 1000 x 272mm
Int. Dim.	1150 x 945 x 905mm
Unit Load	500kg/unit
Capacity	984 litres
Weight	33kg
Material	Polypropylene
Colour	Black



○ BP121099 / BP121097

The standard Boxerpac comes with nine pallet feet, which locate into the lid feature when stacked. BP121099 with two drop door plastic sleeve. BP121097 with two drop door cardboard sleeve.



Stacked
2190mm

Folded
72%

Technical specification

Ext. Top Dim.	1200 x 1000 x 1100mm
Folded	1200 x 1000 x 272mm
Int. Dim.	1150 x 945 x 905mm
Unit Load	500kg/unit
Capacity	984 litres
Weight	33kg
Material	Polypropylene
Colour	Black



○ BP12105H / BP12103H

The standard Boxerpac comes with three runner pallet base, which locate into the lid feature when stacked. BP12105H version with solid plastic sleeve. BP12103H with solid cardboard sleeve.



Stacked
2240mm

Folded
72%

Technical specification

Ext. Top Dim.	1200 x 1000 x 1120mm
Folded	1200 x 1000 x 292mm
Int. Dim.	1150 x 945 x 905mm
Unit Load	500kg/unit
Capacity	984 litres
Weight	33kg
Material	Polypropylene
Colour	Black



○ BP12106H / BP12104H

The standard Boxerpac comes with three runner pallet base, which locate into the lid feature when stacked. BP12106H version with two drop door plastic sleeve. BP12104H version with two drop door cardboard sleeve.

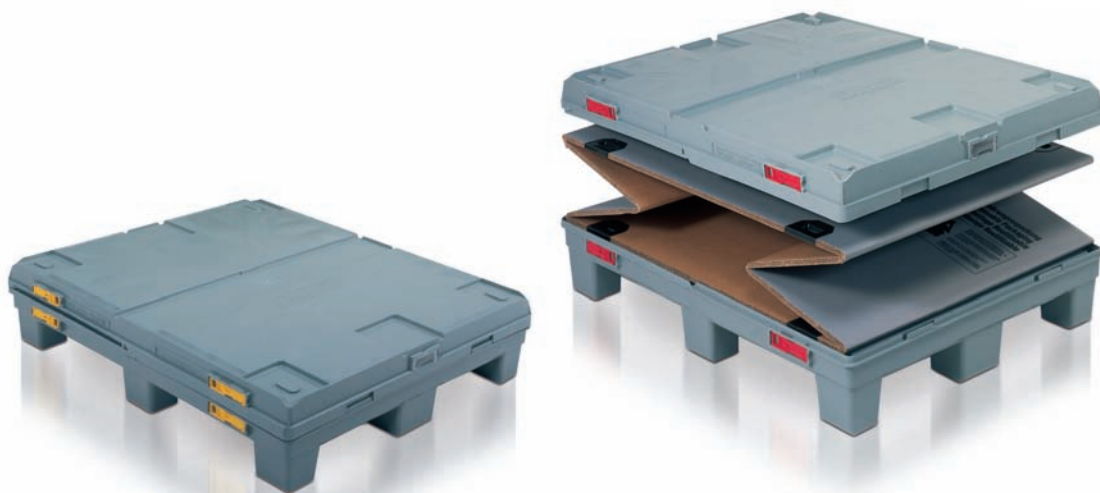


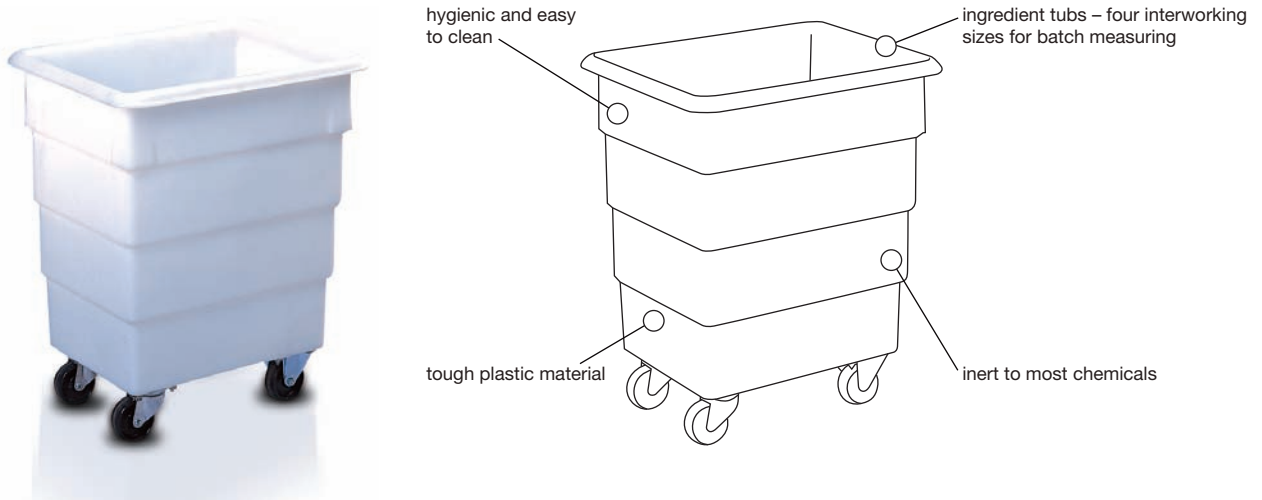
Stacked
2240mm

Folded
72%

Technical specification

Ext. Top Dim.	1200 x 1000 x 1120mm
Folded	1200 x 1000 x 292mm
Int. Dim.	1150 x 945 x 905mm
Unit Load	500kg/unit
Capacity	984 litres
Weight	33kg
Material	Polypropylene
Colour	Black





A huge range of hygienic plastic bins and tubs designed to hold a wide range of food-related goods.

○ **TB400004**

Just one of the range from our interworking measuring tubs which is available from stock. Coloured tubs are available, subject to quantity.

suitable for:

- bakery ingredients
- fats
- liquids



Technical specification

Ht.Top Dim.	Dia. 425 x 178mm
Int.Base Dim.	368 x 170mm
Load	30kg/unit
Capacity	31 litres
Material	MDPE
Colour	Natural



○ **TB750004**

Just one of the range from our interworking measuring tubs which is available from stock. Coloured tubs are available, subject to quantity.

suitable for:

- bakery ingredients
- fats
- liquids



Technical specification

Ht.Top Dim.	Dia. 425 x 300mm
Int.Base Dim.	368 x 293mm
Load	30kg/unit
Capacity	31 litres
Material	MDPE
Colour	Natural



○ **TB110004**

Just one of the range from our interworking measuring tubs which is available from stock. Coloured tubs are available, subject to quantity.

suitable for:

- bakery ingredients
- fats
- liquids



Technical specification

Ht.Top Dim.	Dia. 425 x 438mm
Int.Base Dim.	368 x 432mm
Load	30kg/unit
Capacity	46 litres
Material	MDPE
Colour	Natural



○ **TB160004**

Just one of the range from our interworking measuring tubs which is available from stock. Coloured tubs are available, subject to quantity.

suitable for:

- bakery ingredients
- fats
- liquids



Technical specification

Ht.Top Dim.	Dia. 425 x 641mm
Int.Base Dim.	368 x 629mm
Load	30kg/unit
Capacity	67 litres
Material	MDPE
Colour	Natural



○ TB838004

Fat and general ingredients box which fits standard bakery racking.

suitable for:

- bakery ingredients
- fats
- liquids



Lid
LI838004



Stacked
532mm

Technical specification

Ht.Top Dim.	483 x 381 x 267mm
Int.Base Dim.	394 x 298 x 254mm
Load	15kg/unit
Capacity	29 litres
Material	MDPE
Colour	Natural



○ TB210004

21 litre capacity ingredient dispensing unit, that is ideal for bench top use within a bakery environment.

suitable for:

- bakery ingredients
- salt storage
- sugar storage

Technical specification

Ht.Top Dim.	474 x 205 x 424mm
Int.Base Dim.	N/A
Load	10kg/unit
Capacity	21 litres
Material	MDPE
Colour	Natural/grey lid



○ TB610004

63 litre capacity ingredient dispensing unit, that is ideal for bench top use within a bakery environment.

suitable for:

- bakery ingredients
- salt storage
- sugar storage

Technical specification

Ht.Top Dim.	616 x 280 x 674mm
Int.Base Dim.	N/A
Load	20kg/unit
Capacity	63 litres
Material	MDPE
Colour	Natural/grey lid



○ TB900004

90 litre capacity ingredient dispensing unit, that is ideal for bench top use within a bakery environment.

suitable for:

- bakery ingredients
- salt storage
- sugar storage

Technical specification

Ht.Top Dim.	600 x 410 x 673mm
Int.Base Dim.	N/A
Load	30kg/unit
Capacity	90 litres
Material	MDPE
Colour	Natural/grey lid



○ MO140004

Predominantly used within the food industry, the mobile truck is used in a variety of bulk handling applications.

suitable for:

- textiles
- food ingredients
- liquids



Lid
LI140004



Nested
80%

Technical specification

Ht.Top Dim.	584 x 450 x 685mm
Int.Base Dim.	444 x 310 x 584mm
Capacity	100 litres
Castors	75mm (2 fixed, 2 swivel)
Material	MDPE
Colour	Natural



○ MO210004

Predominantly used within the food industry, the mobile truck is used in a variety of bulk handling applications.

suitable for:

- textiles
- food ingredients
- liquids



Lid
LI210004



Nested
78%

Technical specification

Ht.Top Dim.	800 x 450 x 685mm
Int.Base Dim.	660 x 310 x 584mm
Capacity	145 litres
Castors	75mm (2 fixed, 2 swivel)
Material	MDPE
Colour	Natural



○ **MO100004**

Predominantly used within the food industry, the mobile truck is used in a variety of bulk handling applications.

suitable for:

- textiles
- food ingredients
- liquids



Lid
LI120004



Nested
80%

Technical specification

Ht.Top Dim.	990 x 686 x 762mm
Int.Base Dim.	902 x 597 x 622mm
Capacity	305 litres
Castors	100mm (4 swivel)
Material	MDPE
Colour	Natural



○ **MO300004**

Predominantly used within the food industry, the mobile truck is used in a variety of bulk handling applications.

suitable for:

- textiles
- food ingredients



Lid
LI340004

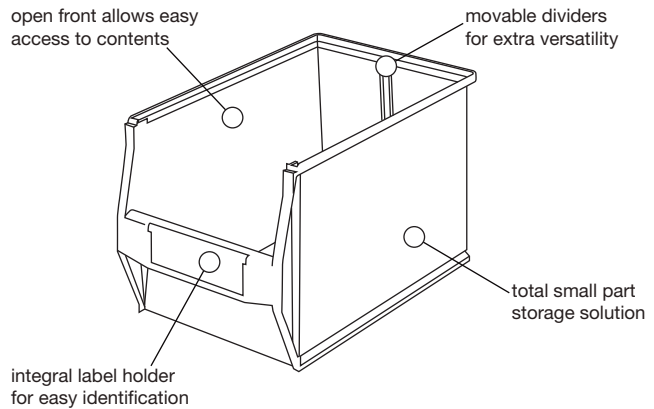


Nested
80%

Technical specification

Ht.Top Dim.	990 x 686 x 762mm
Int.Base Dim.	902 x 597 x 622mm
Capacity	305 litres
Castors	100mm (4 swivel)
Material	MDPE
Colour	Blue





Mini bins, designed to accommodate very small items, that can be securely stacked or hooked to a wall panel for easy access.

○ 71006 / AB100604

Open front containers specifically designed for the storage of components and small parts.

Technical specification

Ext. Dim.	90 x 105 x 52mm
Capacity	1/3 litre
Weight	0.04kg
Material	Polypropylene
Colour	Red, yellow, blue, green



○ 71005 / AB100504

Open front containers specifically designed for the storage of components and small parts.

Technical specification

Ext. Dim.	169 x 105 x 75mm
Capacity	1 litre
Weight	0.09kg
Material	Polypropylene
Colour	Red, yellow, blue, green



○ 71004 / AB100404

Open front containers specifically designed for the storage of components and small parts.

Technical specification

Ext. Dim.	240 x 150 x 125mm
Capacity	4 litres
Weight	0.21kg
Material	Polypropylene
Colour	Red, yellow, blue, green



○ 71009 / AB100904

Open front containers specifically designed for the storage of components and small parts.

Technical specification

Ext. Dim.	360 x 215 x 145mm
Capacity	9 litres
Weight	0.56kg
Material	Polypropylene
Colour	Red, yellow, blue, green



○ 71013 / AB101304

Open front containers specifically designed for the storage of components and small parts.



Divider 71L14

Technical specification

Ext. Dim. 360 x 215 x 200mm
Capacity 13 litres
Weight 0.76kg
Material Polypropylene
Colour Red, yellow, blue, green



○ 71017 / AB101704

Open front containers specifically designed for the storage of components and small parts.



Divider 71L18

Technical specification

Ext. Dim. 500 x 315 x 145mm
Capacity 16 litres
Weight 1.22kg
Material Polypropylene
Colour Red, yellow, blue, green



○ 71027 / AB102704

Open front containers specifically designed for the storage of components and small parts.



Divider 71L28

Technical specification

Ext. Dim. 400 x 460 x 180mm
Capacity 25 litres
Weight 1.52kg
Material Polypropylene
Colour Red, yellow, blue, green



○ 71002 / AB710004

Open front containers specifically designed for the storage of components and small parts.

Technical specification

Ext. Dim. 515 x 315 x 200mm
Capacity 28 litres
Weight 1.57kg
Material Polypropylene
Colour Red, yellow, blue, green



○ 71036 / AB103604

Open front containers specifically designed for the storage of components and small parts.



Divider 71L37

Technical specification

Ext. Dim. 500 x 315 x 300mm
Capacity 35 litres
Weight 1.9kg
Material Polypropylene
Colour Red, yellow, blue, green



○ 72E45 / AB2E4504

Open front containers specifically designed for the storage of components and small parts. With support bar for stacking.

Technical specification

Ext. Dim. 614 x 384 x 250mm
Capacity 45 litres
Weight 2.58kg
Material Polypropylene
Colour Red



○ 72E75 / AB72E704

Open front containers specifically designed for the storage of components and small parts. With support bar for stacking.

Technical specification

Ext. Dim.	724 x 442 x 305mm
Capacity	75 litres
Weight	3.88kg
Material	Polypropylene
Colour	Red



○ stack nest containers

maxinest

DH400002.....	p13
DH641002.....	p12
DH641602.....	p12
SN431302.....	p12
SN431802.....	p12
SN641902.....	p13
SN641907.....	p13
SN642402.....	p13
SN642602.....	p13
SN652402.....	p13

stack nest with bale arm

10060 / SN006008.....	p15
10130 / SN013008.....	p15
11214.....	p15
11215.....	p15
DH300002.....	p14
DH643602.....	p15
DH643607.....	p15
DH701802.....	p14
DH701807.....	p14
DH740002.....	p15
SN642202.....	p14
SN704608.....	p16

180° stack nest

11018 / SN101804.....	p18
11020 / SN102001.....	p18
11032 / SN110305.....	p18
11034 / SN110301.....	p18
11035 / SNR13506.....	p18
11037 / SN103701.....	p18
11044 / SN104405.....	p20
11048 / SN104801.....	p20
11051 / SN105105.....	p19
11052 / SN105201.....	p19
11053 / SNR15306.....	p19
11060 / SN106005.....	p20
11065 / SN106505.....	p19
11066 / SN106601.....	p19
11067 / SNR16706.....	p19
11075 / SN107505.....	p21
12035 / SN203505.....	p20
12041.....	p21
12061 / SN120604.....	p20
12070 / SN207005.....	p20
12A30.....	p21
12A31.....	p21
12A32.....	p21
SN111104.....	p17
SN599004.....	p17
SN600004.....	p17
SN700601.....	p17

bread basket

SN121202.....	p22
SN150201.....	p22
SN150401.....	p23
SN151501.....	p22
SN645401.....	p22

attached lid containers

10005 / AT000504.....	p24
10010 / AT001004.....	p24
10020 / AT002004.....	p24
10025 / AT002504.....	p25
10040 / AT100404.....	p25
10066 / AT006604.....	p26
10552 / AT055209.....	p27
10A5B / AT0A5B04.....	p26

10A6B / AT0A6B04.....	p26
10A82 / AT10A829.....	p26
10A83 / AT10A804.....	p27
AT432204.....	p24
AT432604.....	p25
AT433104.....	p25
AT541704.....	p27
AT542404.....	p27
AT543004.....	p27
AT544004.....	p27
AT642604.....	p25
AT643104.....	p25
AT643604.....	p26
AT644004.....	p26

○ stacking containers

euro stacking containers

03019 / ES301948.....	p32
06032 / ES603201.....	p33
20002 / ES000204.....	p30
20016 / ES001611.....	p32
20019 / ES001911.....	p32
20028 / ES002804.....	p33
20029 / ES002901.....	p33
20030 / ES003006.....	p33
20085 / ES200805.....	p36
20086 / ES200806.....	p36
20087 / ES008701.....	p36
21005 / ES210004.....	p30
21006 / ES100604.....	p30
21008 / ES100804.....	p31
21009 / ES210001.....	p30
21010 / ES210104.....	p31
21013 / ES101304.....	p32
21014 / ES101401.....	p32
21015 / ES101506.....	p32
21020 / ES210204.....	p31
21026 / ES102606.....	p31
21027 / ES102704.....	p31
21030 / ES103004.....	p31
21033 / ES103304.....	p34
21038 / ES103806.....	p34
21054 / ES210504.....	p35
21055 / ES105501.....	p35
21060 / ES210605.....	p35
21061 / ES210606.....	p35
21063 / ES210604.....	p35
21090 / ES210905.....	p36
21091 / ES210901.....	p36
21092 / ES109206.....	p36
21135 / ES211305.....	p37
21136 / ES211306.....	p37
21162 / ES211605.....	p37
21163 / ES211601.....	p37
21164 / ES211606.....	p37
2A021 / ESA02104.....	p33
2A022 / ES102101.....	p33
2A035 / ESA03501.....	p34
2A044 / ES2A0401.....	p34
2A045 / ES2A0404.....	p35
2A046 / ES2A0406.....	p34
2A049 / ES2A0405.....	p34

label holders

21000.....	p38
OPE01 / OTPE0104.....	p38
OPE02 / OTPE0204.....	p38
OPE05.....	p38
OPE06.....	p38
OPE07.....	p38
OPE08.....	p38

OPE39.....	p38
OPE90.....	p38
OPEA6.....	p38

dividers

00413.....	p39
21G21 / RB1G2104.....	p39
21G22 / RB1G2204.....	p39
80045.....	p39
80088.....	p39
80150.....	p39
80190.....	p39

printing and labelling.....

euro stacking boxes with lids

20C10 / ES0C1004.....	p40
20C28 / ES0C2804.....	p41
20C85 / ES0C8504.....	p42
21C13 / ES1C1304.....	p41
21C20 / ES1C2004.....	p40
21C21 / ES1C2104.....	p41
21C27 / ES1C2704.....	p40
21C30 / ES1C3004.....	p40
21C33 / ES1C3304.....	p41
21C45 / ES1C4504.....	p41
21C54 / ES1C5404.....	p41

eureka

26006 / ESK30604.....	p43
26010 / ESK41004.....	p43
26016 / ESK41604.....	p43
26018 / ESK41804.....	p43
26024 / ESK62404.....	p44
26028 / ESK62804.....	p44
26060 / ESK66004.....	p44
OPE26.....	p44
OPE28.....	p44

galia

01315 / GA131504.....	p46
03212 / GA321204.....	p45
04312 / GA431204.....	p45
04322 / GA432204.....	p45
06422 / GA642204.....	p45
06432 / GA643204.....	p46
P6423 / FC642304.....	p47
P6433 / FC643304.....	p47
RB641104.....	p46
RB641504.....	p47
RB651204.....	p46
RB652204.....	p46
RB653204.....	p46

LWB

WB111204.....	p48
WB123104.....	p49
WB230404.....	p48
WB231204.....	p48
WB241204.....	p48
WB241704.....	p48
WB242204.....	p48
WB242704.....	p48
WB261204.....	p48
WB261704.....	p49
WB262204.....	p49
WB262704.....	p49
WB263204.....	p49
WB264204.....	p49

KLT

KL321404.....	p50
KL431404.....	p50
KL432804.....	p50

KL641404.....	p50
KL642804.....	p51
RK321504.....	p51
RK431504.....	p51
RK432904.....	p51
RK642904.....	p51
RL314704.....	p51
RL414729.....	p52
RL428029.....	p52
RL628029.....	p52

stacking containers

21018 / RB101804.....	p53
21024 / RB102428.....	p54
21025 / RB102505.....	p53
21028 / RB102801.....	p54
21029 / RB102928.....	p54
21041 / RB104101.....	p53
29049 / SN290401AA.....	p54
21108 / RB211005.....	p54
21174 / RBA17401.....	p55
21175 / RBA17501.....	p55
29170 / RB917001.....	p54
54064 / RB546401.....	p53

confectionary trays

RB318301.....	p56
RB318306.....	p57
RB318304.....	p56
RB318501.....	p56
RB318504.....	p57
RB318506.....	p57
RB318701.....	p56
RB318704.....	p57
RB318706.....	p57

○ folding containers**folding containers**

BD702692.....	p60
BD702792.....	p60
BD702892.....	p60
FC321804.....	p63
FC432204.....	p63
FC465004.....	p62
FC640101.....	p61
FC640301.....	p61
FC640501.....	p61
FC642204.....	p63
FC643404.....	p62
FC644004.....	p62
MF640102.....	p62
MF640202.....	p62
P6423 / FC642304.....	p62
P6433 / FC643304.....	p63

○ pallets**heavy duty pallets – maestro**

3L300 / MAL30004.....	p66
3L302 / MAL30204.....	p66
3L310 / MAL31004.....	p67
3L350 / MAL35004.....	p66
3L352 / MAL35204.....	p66
3L360 / MAL36004.....	p67
3M300 / MAM30004.....	p67
3M302 / MAM30204.....	p67
3M310 / MAM31004.....	p68
3M352 / MAM35204.....	p67
3M360 / MAM36004.....	p68
3M502 / MAM50204.....	p67

medium duty pallets – packpal

3E002 / PKE00204.....	p69
3E003 / PKE00301.....	p69
3E302 / PKE30204.....	p69
3E303 / PKE30301.....	p69
3E502 / PKE50204.....	p70
3E503 / PKE50301.....	p70
3E509 / PKE50901.....	p70
3F002 / PAF00204.....	p70
3F003 / PKF00301.....	p70
3F302 / PKF30204.....	p70
3F303 / PKF30301.....	p71
3F502 / PKF50204.....	p71
3F503 / PKF50301.....	p71

medium to basic general pallets

06700 / LIH70004.....	p74
06772 / LIM77204.....	p74
06800 / LIF80004.....	p74
06972 / LIL97204.....	p75
06996 / LIG99604.....	p75
3G301 / PAG30101.....	p72
3G303 / PAG30301.....	p72
3G305 / PAG30501.....	p72
CO025104.....	p75
CO101501.....	p75
KL120804.....	p74
KL121004.....	p75
KL121804.....	p75
PA000201.....	p73
PA000232.....	p73
PA000601.....	p73
PA003401.....	p73
PA004004.....	p73
PA005801.....	p74
PA262804.....	p72
PA586301.....	p74
PA860501.....	p73

○ dollies

91005 / DOJ90501.....	p76
910A8.....	p77
96550 / DOR55001.....	p77
96750 / DOR75001.....	p77
97030 / DOM93004.....	p76
97032 / DOM93204.....	p76
99602 / DOTC0201.....	p76
99822 / DOTE2201.....	p77
DO171701.....	p77
DO301801.....	p77
DO302001.....	p77
DO322601.....	p77
DO484901.....	p76
DO641501.....	p76
DO684301.....	p76
DO701501.....	p76
DO701901.....	p77
DO795904.....	p77
DO862501.....	p77
DO867701.....	p77

○ bulk containers**dolav**

DL120801.....	p80
DL120804.....	p80
DL121001.....	p81
DL121004.....	p81
DL121032.....	p80
DL121033.....	p80

box pallets – geobox

27250 / GB725004.....	p82
27270 / GB727004.....	p82
27400 / GB740004.....	p82
27401 / GB740101.....	p82
27600 / GB760004.....	p83
27601 / GB760101.....	p83
27602 / GB760204.....	p83
27603.....	p83

folding large containers (FLCs)

FL059518.....	p84
FL097520.....	p84

ropak

RP323420.....	p84
RP323920.....	p85
RP402520.....	p85
RP402920.....	p85
RP403420.....	p85
RP403920.....	p85

tytan

FLA97520.....	p84
---------------	-----

sleeve packs – boxerpac

BP12085H / BP12083H.....	p86
BP12086H / BP12084H.....	p86
BP120898 / BP120896.....	p86
BP120899 / BP120897.....	p86
BP12105H / BP12103H.....	p87
BP12106H / BP12104H.....	p87
BP121098 / BP121096.....	p87
BP121099 / BP121097.....	p87

tubs and bins

MO100004.....	p90
MO140004.....	p89
MO210004.....	p89
MO300004.....	p90
TB110004.....	p88
TB160004.....	p88
TB210004.....	p89
TB400004.....	p88
TB610004.....	p89
TB750004.....	p88
TB838004.....	p89
TB900004.....	p89

○ small parts storage**allibin range**

71002 / AB710004.....	p92
71004 / AB100404.....	p91
71005 / AB100504.....	p91
71006 / AB100604.....	p91
71009 / AB100904.....	p91
71013 / AB101304.....	p92
71017 / AB101704.....	p92
71027 / AB102704.....	p92
71036 / AB103604.....	p92
72E45 / AB2E4504.....	p92
72E75 / AB72E704.....	p93

○ 10057 / SN005702

Ventilated sides and base. Plastic stacking bars.

stack nest containers

Technical specification

Ext.Top.Dim 600 x 500 x 205mm
Int.Base.Dim 555 x 458 x 190mm
Nested Ht. 70mm
Capacity 50 litres
Weight 2.14kg
Colour Brown-red



○ RB151401

Lightweight Euro container with perforated lid available. Dividers can be fitted to the exterior of the box.

stacking containers

Technical specification

Ext.Top.Dim 600 x 400 x 120mm
Int.Base.Dim 556 x 357 x 112mm
Load 75kg on base tray
Capacity 23 litres
Weight 0.9kg
Material Polypropylene
Colour Black



○ 21064 / ES210601

Ventilated sides and base.

stacking containers

Technical specification

Ext. Dim 600 x 400 x 319mm
Int. Dim 555 x 355 x 294mm
Capacity 60 litres
Weight 2.33kg
Colour Grey



○ RB155004

Stacking container with rounded internal corners for easy cleaning.

stacking containers

Technical specification

Ext.Top.Dim 654 x 395 x 155mm
Int.Base.Dim 585 x 325 x 139mm
Load 180kg on base tray
Capacity 28 litres
Weight 1.9kg
Material HDPE
Colour Natural



○ 24025 / RB240205

stacking containers

Technical specification

Ext.Top.Dim 360 x 360 x 250mm
Int.Base.Dim 330 x 330 x 234mm
Capacity 25 litres
Weight 1.4kg
Colour Red, blue



○ RB156304

Plastics Tote Pan that interworks with its metal equivalent.

stacking containers

Technical specification

Ext.Top.Dim 458 x 305 x 152mm
Int.Base.Dim 390 x 270 x 137mm
Load 320kg on base tray
Capacity 17 litres
Weight 1.1kg
Material Polypropylene
Colour Brown



○ 41042 / RB410401

stacking containers

Technical specification

Ext.Top.Dim 750 x 450 x 165mm
Int.Base.Dim 724 x 425 x 138mm
Capacity 43 litres
Weight 1.68kg
Colour White, brown-red



○ 29049 / SN290401

Ventilated sides and base.

stacking containers

Technical specification

Ext. Dim 550 x 366 x 295mm
Int. Dim 518 x 333 x 260mm
Capacity 50 litres
Weight 2.02kg
Colour Brown-red, orange



○ RB142204

Stacking container with rounded internal corners for easy cleaning.

stacking containers

Technical specification

Ext.Top.Dim 648 x 394 x 209mm
Int.Base.Dim 597 x 340 x 186mm
Load 180kg on base tray
Capacity 41 litres
Weight 2.1kg
Material HDPE
Colour Natural

