

Millimetres
0 10 100

Refer to drawing 5149899-ATK-ETE-DRG-EN-00015& 5149899-ATK-ETE-DRG-EN-00016 for Newhaven Public Realm Proposals incorporating driver welfare facility with power and water supply under development

Stabling area incorporating security measures including CCTV

Public Realm Improvements: predominantly soft landscape treatment comprised of specimen trees and ground-cover shrub planting.

Driver welfare facility

Buffer stop

Uncontrolled crossing

Adjoins existing shared surface facility

Uncontrolled crossing

TO SHEET 2 OF 14

Newhaven Tramstop

Uncontrolled crossing

New proposed path connection



KEY

- Pre-cast concrete paving
- Natural stone paving
- Asphalt footpath
- Raised Setts
- Cycle route
- Shared surface (Cycle route)
- Shared surface (pre-cast concrete paving)
- Shared surface (natural stone paving)
- Shared surface (asphalt footpath)
- Grasscrete or similar approved
- Proposed trees
- Existing trees
- Proposed grass
- Proposed ground-cover shrub planting
- Proposed raised planter
- Proposed/ retained cycle racks (8no provided; indicative location)
- Tram/ Cycle interface road markings (indicative)
- Tactile paving (Indicative)
- Existing/ proposed walls
- Parking bays
- Loading bays
- Bin locations

P12	23/11/21	Updates to reflect Contractor's design	BF	SS	SB	SM
P11	05/08/21	ELEVENTH ISSUE	AM	SS	SB	SM
P10	18/09/20	TENTH ISSUE	LL	SS	SB	SM
P09	31/07/20	NINTH ISSUE	LL	SS	SB	SM
P08	16/06/20	EIGHTH ISSUE	LL	SS	SB	SM
P07	05/03/20	SEVENTH ISSUE	LL	SS	SB	SM
P06	22/08/19	SIXTH ISSUE	LL	SS	SB	SM
P05	29/01/19	FIFTH ISSUE	RP	SB	SB	SM
P04	05/10/18	FOURTH ISSUE	RP	SB	SB	SM
P03	29/09/18	THIRD ISSUE	RP	SB	SB	SM
P02	14/03/18	SECOND ISSUE	SW	SB	SB	SM
P01	06/03/18	FIRST ISSUE	SW	SB	SB	SM
Rev.	Date	Description	Org	Chk'd	App'd	Aur'd

FOR INFORMATION S2

ATKINS
 6th Floor
 200 Broomielaw
 Glasgow
 Scotland
 G1 4RU
 Tel: +44 (0)141 220 2000
 Fax: +44 (0)141 220 2001
 www.atkinsglobal.com

Copyright © Atkins Limited (2013)

EDINBURGH
 THE CITY OF EDINBURGH COUNCIL

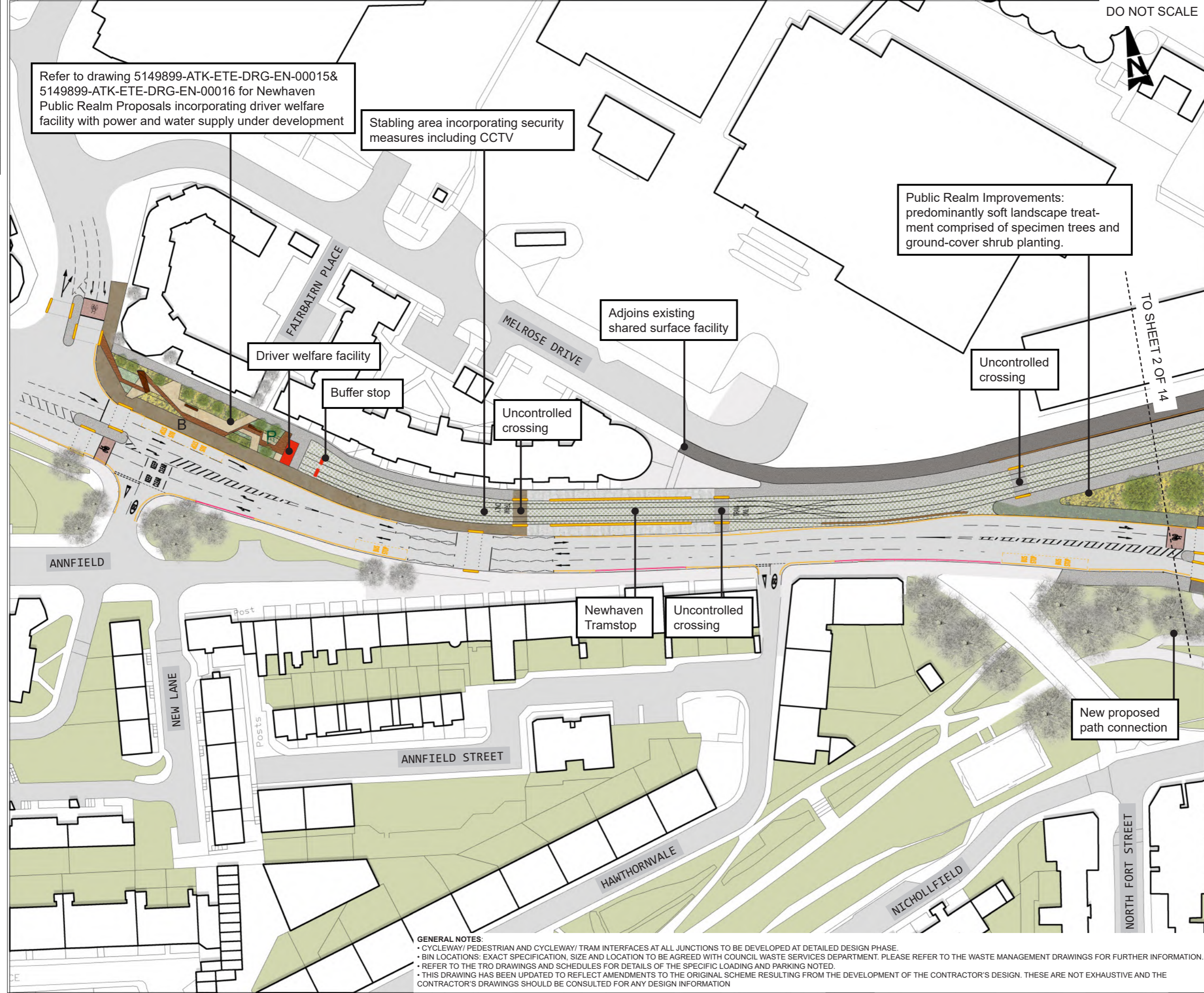
Project Title
**EDINBURGH TRAM
 YORK PLACE TO NEWHAVEN**

Drawing Title
**LANDSCAPE PROPOSALS
 SHEET 1 OF 14**

Scale	Original	Checked	Approved	Authorised
1:500	LL	SS	SB	SM
Original Size	Date	Date	Date	Date
A1	23/11/21	23/11/21	23/11/21	23/11/21
Drawing Number	Revision			
5149899-ATK-ETE-DRG-EN-00001	P12			

GENERAL NOTES:

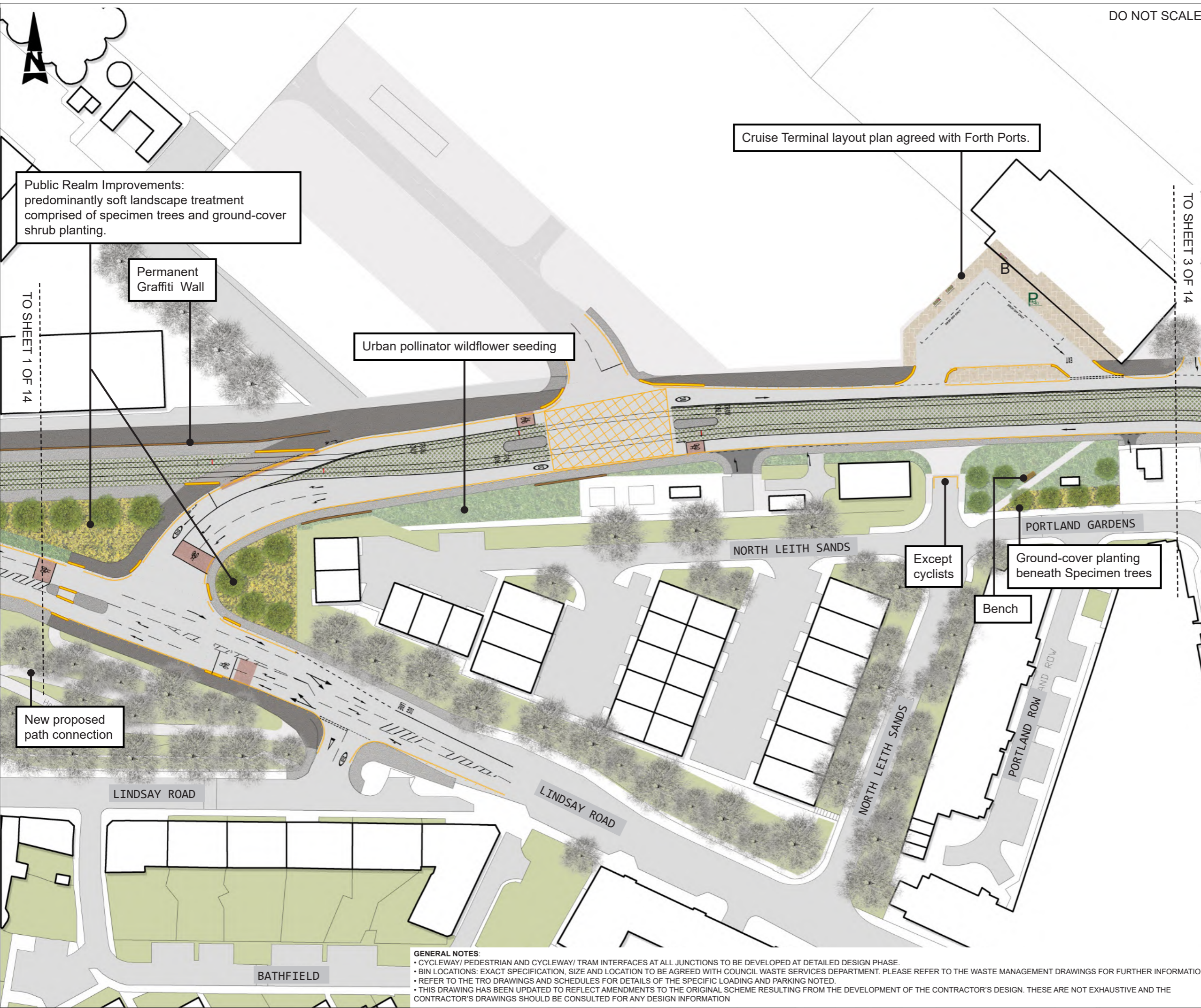
- CYCLEWAY/ PEDESTRIAN AND CYCLEWAY/ TRAM INTERFACES AT ALL JUNCTIONS TO BE DEVELOPED AT DETAILED DESIGN PHASE.
- BIN LOCATIONS: EXACT SPECIFICATION, SIZE AND LOCATION TO BE AGREED WITH COUNCIL WASTE SERVICES DEPARTMENT. PLEASE REFER TO THE WASTE MANAGEMENT DRAWINGS FOR FURTHER INFORMATION.
- REFER TO THE TRO DRAWINGS AND SCHEDULES FOR DETAILS OF THE SPECIFIC LOADING AND PARKING NOTED.
- THIS DRAWING HAS BEEN UPDATED TO REFLECT AMENDMENTS TO THE ORIGINAL SCHEME RESULTING FROM THE DEVELOPMENT OF THE CONTRACTOR'S DESIGN. THESE ARE NOT EXHAUSTIVE AND THE CONTRACTOR'S DRAWINGS SHOULD BE CONSULTED FOR ANY DESIGN INFORMATION



0 10 100
Millimetres

DO NOT SCALE

KEY	
	Pre-cast concrete paving
	Natural stone paving
	Asphalt footpath
	Raised Setts
	Cycle route
	Shared surface (Cycle route)
	Shared surface (pre-cast concrete paving)
	Shared surface (natural stone paving)
	Shared surface (asphalt footpath)
	Grasscrete or similar approved
	Proposed trees
	Existing trees
	Proposed grass
	Proposed ground-cover shrub planting
	Proposed raised planter
	Proposed/ retained cycle racks (8no provided; indicative location)
	Tram/ Cycle interface road markings (indicative)
	Tactile paving (Indicative)
	Existing/ proposed walls
	Parking bays
	Loading bays
	Bin locations



Public Realm Improvements:
predominantly soft landscape treatment
comprised of specimen trees and ground-cover
shrub planting.

Permanent
Graffiti Wall

Urban pollinator wildflower seeding

Cruise Terminal layout plan agreed with Forth Ports.

TO SHEET 3 OF 14

TO SHEET 1 OF 14

New proposed
path connection

Except
cyclists

Ground-cover planting
beneath Specimen trees

Bench

GENERAL NOTES:
 • CYCLEWAY/ PEDESTRIAN AND CYCLEWAY/ TRAM INTERFACES AT ALL JUNCTIONS TO BE DEVELOPED AT DETAILED DESIGN PHASE.
 • BIN LOCATIONS: EXACT SPECIFICATION, SIZE AND LOCATION TO BE AGREED WITH COUNCIL WASTE SERVICES DEPARTMENT. PLEASE REFER TO THE WASTE MANAGEMENT DRAWINGS FOR FURTHER INFORMATION.
 • REFER TO THE TRO DRAWINGS AND SCHEDULES FOR DETAILS OF THE SPECIFIC LOADING AND PARKING NOTED.
 • THIS DRAWING HAS BEEN UPDATED TO REFLECT AMENDMENTS TO THE ORIGINAL SCHEME RESULTING FROM THE DEVELOPMENT OF THE CONTRACTOR'S DESIGN. THESE ARE NOT EXHAUSTIVE AND THE CONTRACTOR'S DRAWINGS SHOULD BE CONSULTED FOR ANY DESIGN INFORMATION

Rev.	Date	Description	Org	Chk'd	App'd	Aur'd
P12	23/11/21	Updates to reflect Contractor's design	BF	SS	SB	SM
P11	05/08/21	ELEVENTH ISSUE	AM	SS	SB	SM
P10	05/08/20	TENTH ISSUE	LL	SS	SB	SM
P09	31/07/20	NINTH ISSUE	LL	SS	SB	SM
P08	16/06/20	EIGHTH ISSUE	LL	SS	SB	SM
P07	19/11/19	FORTH PORTS ACCESS UPDATE	LL	SS	SB	SM
P06	22/08/19	SIXTH ISSUE	LL	SS	SB	SM
P05	29/01/19	FIFTH ISSUE	RP	SB	SB	SM
P04	05/10/18	FOURTH ISSUE	RP	SB	SB	SM
P03	29/09/18	THIRD ISSUE	RP	SB	SB	SM
P02	14/03/18	SECOND ISSUE	SW	SB	SB	SM
P01	06/03/18	FIRST ISSUE	SW	SB	SB	SM

FOR INFORMATION S2

ATKINS
 6th Floor
 200 Broomielaw
 Glasgow
 Scotland
 G1 4RU
 Tel: +44 (0)141 220 2000
 Fax: +44 (0)141 220 2001
 www.atkinsglobal.com

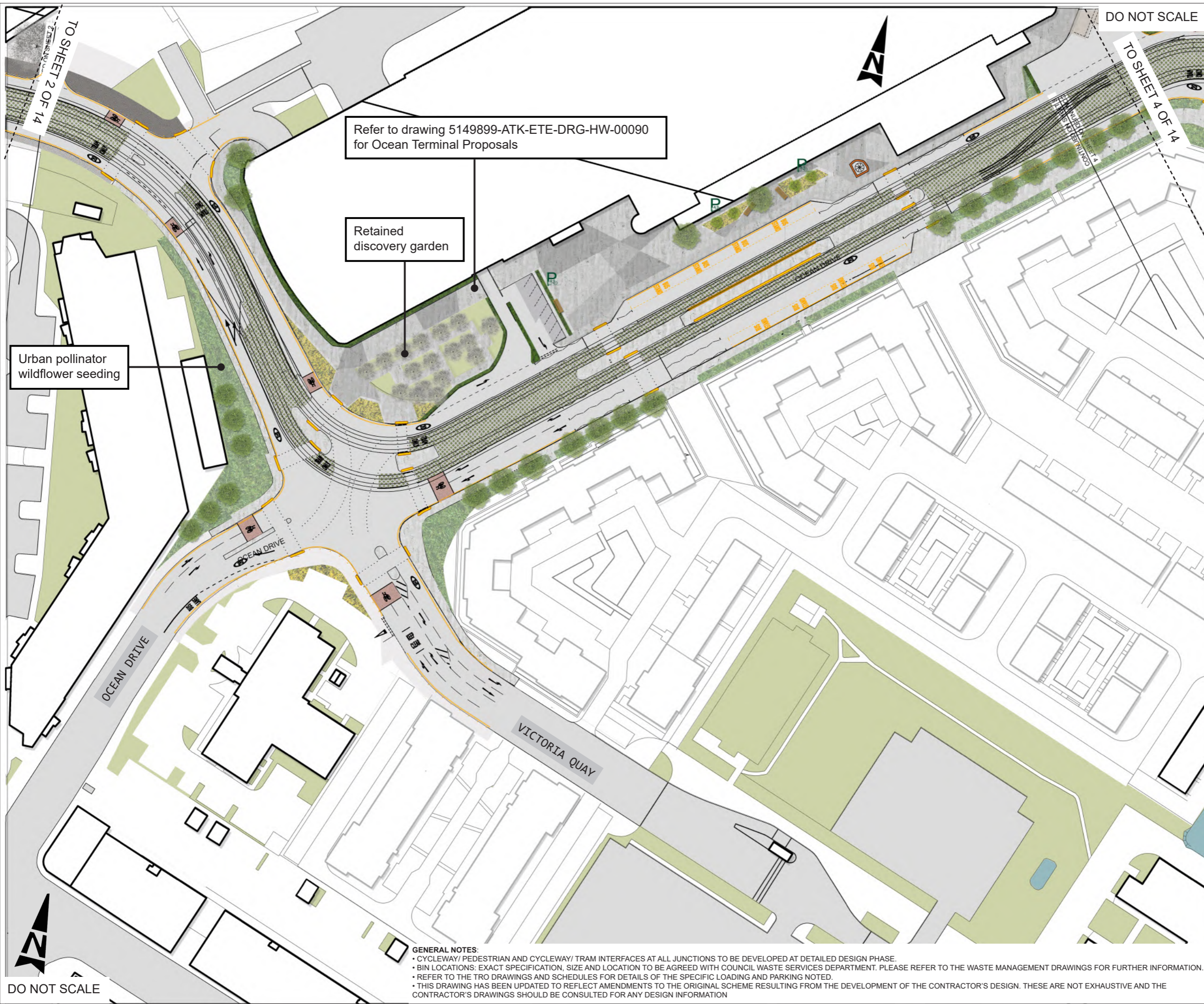
Client
EDINBURGH
 THE CITY OF EDINBURGH COUNCIL

Project Title
**EDINBURGH TRAM
 YORK PLACE TO NEWHAVEN**

Drawing Title
**LANDSCAPE PROPOSALS
 SHEET 2 OF 14**

Scale	Originator	Checked	Approved	Authorised
Original Size	Date	Date	Date	Date
1:500	LL	SS	SB	SM
A1	23/11/21	23/11/21	23/11/21	23/11/21
Drawing Number	Revision			
5149899-ATK-ETE-DRG-EN-00002	P12			

0 10 100
Millimetres



DO NOT SCALE

KEY

- Pre-cast concrete paving
- Natural stone paving
- Asphalt footpath
- Raised Setts
- Cycle route
- Shared surface (Cycle route)
- Shared surface (pre-cast concrete paving)
- Shared surface (natural stone paving)
- Shared surface (asphalt footpath)
- Grasscrete or similar approved
- Proposed trees
- Existing trees
- Proposed grass
- Proposed ground-cover shrub planting
- Proposed raised planter
- Proposed/ retained cycle racks (8no provided; indicative location)
- Tram/ Cycle interface road markings (indicative)
- Tactile paving (Indicative)
- Existing/ proposed walls
- Parking bays
- Loading bays
- Bin locations
- Trees within raised planters

P12	23/11/21	Updates to reflect Contractor's design	BF	SS	SB	SM
P11	05/08/21	ELEVENTH ISSUE	AM	SS	SB	SM
P10	12/01/21	TENTH ISSUE	LL	SS	SB	SM
P09	20/10/20	NINTH ISSUE	LL	SS	SB	SM
P08	18/09/20	EIGHTH ISSUE	LL	SS	SB	SM
P07	31/07/20	SEVENTH ISSUE	LL	SS	SB	SM
P06	16/06/20	SIXTH ISSUE	LL	SS	SB	SM
P05	29/01/19	FIFTH ISSUE	RP	SB	SB	SM
P04	05/10/18	FOURTH ISSUE	RP	SB	SB	SM
P03	29/09/18	THIRD ISSUE	RP	SB	SB	SM
P02	14/03/18	SECOND ISSUE	SW	SB	SB	SM
P01	06/03/18	FIRST ISSUE	SW	SB	SB	SM
Rev.	Date	Description	Org	Chk'd	App'd	Aur'd

FOR INFORMATION S2

ATKINS
 6th Floor
 200 Broomielaw
 Glasgow
 Scotland
 G1 4RU
 Tel: +44 (0)141 220 2000
 Fax: +44 (0)141 220 2001
 www.atkinsglobal.com

Copyright © Atkins Limited (2013)

EDINBURGH
 THE CITY OF EDINBURGH COUNCIL

Project Title
**EDINBURGH TRAM
 YORK PLACE TO NEWHAVEN**

Drawing Title
**LANDSCAPE PROPOSALS
 SHEET 3 OF 14**

Scale	Original	Checked	Approved	Authorised
1:500	LL	SS	SB	SM
Original Size	Date	Date	Date	Date
A1	23/11/21	23/11/21	23/11/21	23/11/21
Drawing Number	Revision			
5149899-ATK-ETE-DRG-EN-00003	P12			

Refer to drawing 5149899-ATK-ETE-DRG-HW-00090 for Ocean Terminal Proposals

Retained discovery garden

Urban pollinator wildflower seeding

GENERAL NOTES:

- CYCLEWAY/ PEDESTRIAN AND CYCLEWAY/ TRAM INTERFACES AT ALL JUNCTIONS TO BE DEVELOPED AT DETAILED DESIGN PHASE.
- BIN LOCATIONS: EXACT SPECIFICATION, SIZE AND LOCATION TO BE AGREED WITH COUNCIL WASTE SERVICES DEPARTMENT. PLEASE REFER TO THE WASTE MANAGEMENT DRAWINGS FOR FURTHER INFORMATION.
- REFER TO THE TRO DRAWINGS AND SCHEDULES FOR DETAILS OF THE SPECIFIC LOADING AND PARKING NOTED.
- THIS DRAWING HAS BEEN UPDATED TO REFLECT AMENDMENTS TO THE ORIGINAL SCHEME RESULTING FROM THE DEVELOPMENT OF THE CONTRACTOR'S DESIGN. THESE ARE NOT EXHAUSTIVE AND THE CONTRACTOR'S DRAWINGS SHOULD BE CONSULTED FOR ANY DESIGN INFORMATION

DO NOT SCALE

0 10 100
Millimetres

DO NOT SCALE



KEY	
	Pre-cast concrete paving
	Natural stone paving
	Asphalt footpath
	Raised Setts
	Cycle route
	Shared surface (Cycle route)
	Shared surface (pre-cast concrete paving)
	Shared surface (natural stone paving)
	Shared surface (asphalt footpath)
	Grasscrete or similar approved
	Proposed trees
	Existing trees
	Proposed grass
	Proposed ground-cover shrub planting
	Proposed hedges
	Proposed raised planter
	Proposed/ retained cycle racks (8no provided; indicative location)
	Tram/ Cycle interface road markings (indicative)
	Tactile paving (Indicative)
	Existing/ proposed walls
	Parking bays
	Loading bays
	Bin locations

Refer to drawing 5149899-ATK-ETE-DRG-HW-00090 for Ocean Terminal Proposals

PROPOSED RESIDENTIAL DEVELOPMENT

OCEAN DRIVE

TO SHEET 3 OF 14

TO SHEET 5 OF 14

Un-controlled pedestrian crossing

Rev.	Date	Description	Org	Chk'd	App'd	Aur'd
P12	23/11/21	Updates to reflect Contractor's design	BF	SS	SB	SM
P11	05/08/21	ELEVENTH ISSUE	AM	SS	SB	SM
P10	05/08/21	TENTH ISSUE	AM	SS	SB	SM
P09	20/10/20	NINTH ISSUE	LL	SS	SB	SM
P08	18/09/20	EIGHTH ISSUE	LL	SS	SB	SM
P07	31/07/20	SEVENTH ISSUE	LL	SS	SB	SM
P06	16/06/20	SIXTH ISSUE	LL	SS	SB	SM
P05	29/01/19	FIFTH ISSUE	RP	SB	SB	SM
P04	05/10/18	FOURTH ISSUE	RP	SB	SB	SM
P03	29/09/18	THIRD ISSUE	RP	SB	SB	SM
P02	14/03/18	SECOND ISSUE	SW	SB	SB	SM
P01	06/03/18	FIRST ISSUE	SW	SB	SB	SM

FOR INFORMATION S2

ATKINS
 6th Floor
 200 Broomielaw
 Glasgow
 Scotland
 G1 4RU
 Tel: +44 (0)141 220 2000
 Fax: +44 (0)141 220 2001
 www.atkinsglobal.com

Copyright © Atkins Limited (2013)

EDINBURGH
 THE CITY OF EDINBURGH COUNCIL

Project Title
**EDINBURGH TRAM
 YORK PLACE TO NEWHAVEN**

Drawing Title
**LANDSCAPE PROPOSALS
 SHEET 4 OF 14**

Scale	Originator	Checked	Approved	Authorised
1:500	LL	SS	SB	SM
Original Size	Date	Date	Date	Date
A1	23/11/21	23/11/21	23/11/21	23/11/21
Drawing Number	Revision			
5149899-ATK-ETE-DRG-EN-00004	P12			

GENERAL NOTES:

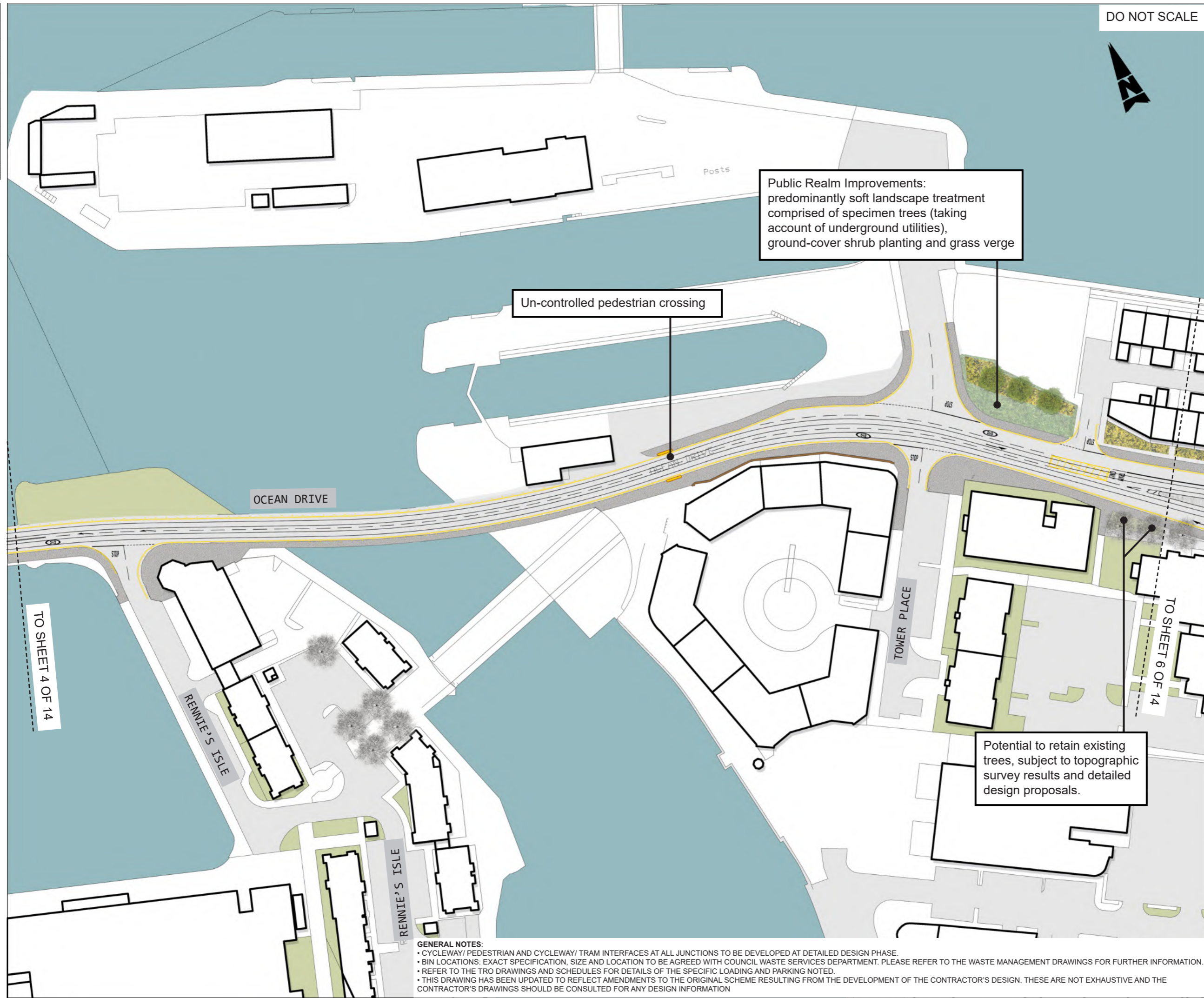
- CYCLEWAY/ PEDESTRIAN AND CYCLEWAY/ TRAM INTERFACES AT ALL JUNCTIONS TO BE DEVELOPED AT DETAILED DESIGN PHASE.
- BIN LOCATIONS: EXACT SPECIFICATION, SIZE AND LOCATION TO BE AGREED WITH COUNCIL WASTE SERVICES DEPARTMENT. PLEASE REFER TO THE WASTE MANAGEMENT DRAWINGS FOR FURTHER INFORMATION.
- REFER TO THE TRO DRAWINGS AND SCHEDULES FOR DETAILS OF THE SPECIFIC LOADING AND PARKING NOTED.
- THIS DRAWING HAS BEEN UPDATED TO REFLECT AMENDMENTS TO THE ORIGINAL SCHEME RESULTING FROM THE DEVELOPMENT OF THE CONTRACTOR'S DESIGN. THESE ARE NOT EXHAUSTIVE AND THE CONTRACTOR'S DRAWINGS SHOULD BE CONSULTED FOR ANY DESIGN INFORMATION

0 10 100
Millimetres

DO NOT SCALE



KEY	
	Pre-cast concrete paving
	Natural stone paving
	Asphalt footpath
	Raised Setts
	Cycle route
	Shared surface (Cycle route)
	Shared surface (pre-cast concrete paving)
	Shared surface (natural stone paving)
	Shared surface (asphalt footpath)
	Grasscrete or similar approved
	Proposed trees
	Existing trees
	Proposed grass
	Proposed ground-cover shrub planting
	Proposed raised planter
	Proposed/ retained cycle racks (8no provided; indicative location)
	Tram/ Cycle interface road markings (indicative)
	Tactile paving (Indicative)
	Existing/ proposed walls
	Parking bays
	Loading bays
	Bin locations
	Trees within raised planters



Public Realm Improvements:
predominantly soft landscape treatment
comprised of specimen trees (taking
account of underground utilities),
ground-cover shrub planting and grass verge

Un-controlled pedestrian crossing

Potential to retain existing
trees, subject to topographic
survey results and detailed
design proposals.

GENERAL NOTES:
 • CYCLEWAY/ PEDESTRIAN AND CYCLEWAY/ TRAM INTERFACES AT ALL JUNCTIONS TO BE DEVELOPED AT DETAILED DESIGN PHASE.
 • BIN LOCATIONS: EXACT SPECIFICATION, SIZE AND LOCATION TO BE AGREED WITH COUNCIL WASTE SERVICES DEPARTMENT. PLEASE REFER TO THE WASTE MANAGEMENT DRAWINGS FOR FURTHER INFORMATION.
 • REFER TO THE TRO DRAWINGS AND SCHEDULES FOR DETAILS OF THE SPECIFIC LOADING AND PARKING NOTED.
 • THIS DRAWING HAS BEEN UPDATED TO REFLECT AMENDMENTS TO THE ORIGINAL SCHEME RESULTING FROM THE DEVELOPMENT OF THE CONTRACTOR'S DESIGN. THESE ARE NOT EXHAUSTIVE AND THE CONTRACTOR'S DRAWINGS SHOULD BE CONSULTED FOR ANY DESIGN INFORMATION

P12	23/11/21	Updates to reflect Contractor's design	BF	SS	SB	SM
P11	05/08/21	ELEVENTH ISSUE	AM	SS	SB	SM
P10	12/01/21	TENTH ISSUE	AM	SS	SB	SM
P09	12/01/21	NINTH ISSUE	LL	SS	SB	SM
P08	18/09/20	EIGHTH ISSUE	LL	SS	SB	SM
P07	31/07/20	SEVENTH ISSUE	LL	SS	SB	SM
P06	16/06/20	SIXTH ISSUE	LL	SS	SB	SM
P05	29/01/19	FIFTH ISSUE	RP	SB	SB	SM
P04	05/10/18	FOURTH ISSUE	RP	SB	SB	SM
P03	29/09/18	THIRD ISSUE	RP	SB	SB	SM
P02	14/03/18	SECOND ISSUE	SW	SB	SB	SM
P01	06/03/18	FIRST ISSUE	SW	SB	SB	SM
Rev.	Date	Description	Org	Chk'd	App'd	Aur'd

FOR INFORMATION S2

ATKINS
 6th Floor
 200 Broomielaw
 Glasgow
 Scotland
 G1 4RU
 Tel: +44 (0)141 220 2000
 Fax: +44 (0)141 220 2001
 www.atkinsglobal.com

Copyright © Atkins Limited (2013)
 Client
EDINBURGH
 THE CITY OF EDINBURGH COUNCIL

Project Title
**EDINBURGH TRAM
 YORK PLACE TO NEWHAVEN**

Drawing Title
**LANDSCAPE PROPOSALS
 SHEET 5 OF 14**

Scale	Originator	Checked	Approved	Authorised
1:500	LL	SS	SB	SM
Original Size	Date	Date	Date	Date
A1	23/11/21	23/11/21	23/11/21	23/11/21
Drawing Number	Revision			
5149899-ATK-ETE-DRG-EN-00005	P12			

TO SHEET 4 OF 14

TO SHEET 6 OF 14

0 10 100
Millimetres

DO NOT SCALE



PROPOSED FUTURE FORTH PORTS WORKS

Ground-cover shrub planting between car park and re-aligned footpath, including 9 specimen trees.

Ground-cover shrubs between footpath and property boundary. Access maintained to gardens by provision of connecting footpaths through ground-cover planting.

Limited waiting

Limited waiting

Setts to be used for this access

Setts to be used for this access

9no. specimen trees (taking account of underground utilities)

Existing boundary wall and railings retained and re-aligned where required to suit scheme proposals.

KEY

- Pre-cast concrete paving
- Natural stone paving
- Asphalt footpath
- Raised Setts
- Cycle route
- Shared surface (Cycle route)
- Shared surface (pre-cast concrete paving)
- Shared surface (natural stone paving)
- Shared surface (asphalt footpath)
- Grasscrete or similar approved
- Proposed trees
- Existing trees
- Proposed grass
- Proposed ground-cover shrub planting
- Proposed raised planter
- Proposed/ retained cycle racks (8no provided; indicative location)
- Tram/ Cycle interface road markings (indicative)
- Tactile paving (Indicative)
- Existing/ proposed walls
- Parking bays
- Loading bays
- Bin locations
- Trees within raised planters

P12	23/11/21	Updates to reflect Contractor's design	BF	SS	SB	SM
P11	05/08/21	ELEVENTH ISSUE	AM	SS	SB	SM
P10	12/01/21	TENTH ISSUE	LL	SS	SB	SM
P09	11/11/20	NINTH ISSUE	LL	SS	SB	SM
P08	18/09/20	EIGHTH ISSUE	LL	SS	SB	SM
P07	31/07/20	SEVENTH ISSUE	LL	SS	SB	SM
P06	16/06/20	SIXTH ISSUE	LL	SS	SB	SM
P05	29/01/19	FIFTH ISSUE	RP	SB	SB	SM
P04	05/10/18	FOURTH ISSUE	RP	SB	SB	SM
P03	29/09/18	THIRD ISSUE	RP	SB	SB	SM
P02	14/03/18	SECOND ISSUE	SW	SB	SB	SM
P01	06/03/18	FIRST ISSUE	SW	SB	SB	SM
Rev.	Date	Description	Org	Chk'd	App'd	Aur'd

FOR INFORMATION S2

ATKINS
 6th Floor
 200 Broomielaw
 Glasgow
 Scotland
 G1 4RU
 Tel: +44 (0)141 220 2000
 Fax: +44 (0)141 220 2001
 www.atkinsglobal.com

EDINBURGH
 THE CITY OF EDINBURGH COUNCIL

Project Title
**EDINBURGH TRAM
 YORK PLACE TO NEWHAVEN**

Drawing Title
**LANDSCAPE PROPOSALS
 SHEET 6 OF 14**

Scale	Original	Checked	Approved	Authorised
1:500	LL	SS	SB	SM
Original Size	Date	Date	Date	Date
A1	23/11/21	23/11/21	23/11/21	23/11/21
Drawing Number	Revision			
5149899-ATK-ETE-DRG-EN-00006	P12			

GENERAL NOTES:

- CYCLEWAY/ PEDESTRIAN AND CYCLEWAY/ TRAM INTERFACES AT ALL JUNCTIONS TO BE DEVELOPED AT DETAILED DESIGN PHASE.
- BIN LOCATIONS: EXACT SPECIFICATION, SIZE AND LOCATION TO BE AGREED WITH COUNCIL WASTE SERVICES DEPARTMENT. PLEASE REFER TO THE WASTE MANAGEMENT DRAWINGS FOR FURTHER INFORMATION.
- REFER TO THE TRO DRAWINGS AND SCHEDULES FOR DETAILS OF THE SPECIFIC LOADING AND PARKING NOTED.
- THIS DRAWING HAS BEEN UPDATED TO REFLECT AMENDMENTS TO THE ORIGINAL SCHEME RESULTING FROM THE DEVELOPMENT OF THE CONTRACTOR'S DESIGN. THESE ARE NOT EXHAUSTIVE AND THE CONTRACTOR'S DRAWINGS SHOULD BE CONSULTED FOR ANY DESIGN INFORMATION

TO SHEET 5 OF 14

TO SHEET 7 OF 14

STEVEDORE PLACE

CONSTITUTION PLACE

TOWER STREET

TOWER STREET

0 10 100
Millimetres

DO NOT SCALE

- KEY**
-  Pre-cast concrete paving
 -  Natural stone paving
 -  Asphalt footpath
 -  Raised Setts
 -  Cycle route
 -  Shared surface (Cycle route)
 -  Shared surface (pre-cast concrete paving)
 -  Shared surface (natural stone paving)
 -  Shared surface (asphalt footpath)
 -  Grasscrete or similar approved
 -  Proposed trees
 -  Existing trees
 -  Proposed grass
 -  Proposed ground-cover shrub planting
 -  Proposed raised planter
 -  Proposed/ retained cycle racks (8no provided; indicative location)
 -  Tram/ Cycle interface road markings (indicative)
 -  Tactile paving (Indicative)
 -  Existing/ proposed walls
 -  Parking bays
 -  Loading bays
 -  Bin locations
 -  Trees within raised planters

Rev.	Date	Description	Org	Chkd	App'd	Aur'd
P12	23/11/21	Updates to reflect Contractor's design	BF	SS	SB	SM
P11	05/08/21	ELEVENTH ISSUE	AM	SS	SB	SM
P10	19/05/21	TENTH ISSUE	LL	SS	SB	SM
P09	11/11/20	NINTH ISSUE	LL	SS	SB	SM
P08	18/09/20	EIGHTH ISSUE	LL	SS	SB	SM
P07	16/06/20	SEVENTH ISSUE	LL	SS	SB	SM
P06	29/01/19	SIXTH ISSUE	RP	SB	SB	SM
P05	17/12/18	FIFTH ISSUE	RP	SB	SB	SM
P04	05/10/18	FOURTH ISSUE	RP	SB	SB	SM
P03	29/09/18	THIRD ISSUE	RP	SB	SB	SM
P02	14/03/18	SECOND ISSUE	SW	SB	SB	SM
P01	06/03/18	FIRST ISSUE	SW	SB	SB	SM

FOR INFORMATION S2

ATKINS
 6th Floor
 200 Broomielaw
 Glasgow
 Scotland
 G1 4RU
 Tel: +44 (0)141 220 2000
 Fax: +44 (0)141 220 2001
 www.atkinsglobal.com

Copyright © Atkins Limited (2013)
 Client
EDINBURGH
 THE CITY OF EDINBURGH COUNCIL

Project Title
**EDINBURGH TRAM
 YORK PLACE TO NEWHAVEN**

Drawing Title
**LANDSCAPE PROPOSALS
 SHEET 7 OF 14**

Scale	Originator	Checked	Approved	Authorised
Original Size	Date	Date	Date	Date
1:500	LL	SS	SB	SM
A1	23/11/21	23/11/21	23/11/21	23/11/21
Drawing Number	5149899-ATK-ETE-DRG-EN-00007			Revision
				P12



Public Realm Improvements:
 predominantly hard landscape treatment comprising
 of natural stone paving, specimen trees, litter bins
 and cycle stands.

GENERAL NOTES:
 • CYCLEWAY/ PEDESTRIAN AND CYCLEWAY/ TRAM INTERFACES AT ALL JUNCTIONS TO BE DEVELOPED AT DETAILED DESIGN PHASE.
 • BIN LOCATIONS: EXACT SPECIFICATION, SIZE AND LOCATION TO BE AGREED WITH COUNCIL WASTE SERVICES DEPARTMENT. PLEASE REFER TO THE WASTE MANAGEMENT DRAWINGS FOR FURTHER INFORMATION.
 • REFER TO THE TRO DRAWINGS AND SCHEDULES FOR DETAILS OF THE SPECIFIC LOADING AND PARKING NOTED.
 • THIS DRAWING HAS BEEN UPDATED TO REFLECT AMENDMENTS TO THE ORIGINAL SCHEME RESULTING FROM THE DEVELOPMENT OF THE CONTRACTOR'S DESIGN. THESE ARE NOT EXHAUSTIVE AND THE CONTRACTOR'S DRAWINGS SHOULD BE CONSULTED FOR ANY DESIGN INFORMATION

0 10 100
Millimetres

DO NOT SCALE



KEY	
	Pre-cast concrete paving
	Natural stone paving
	Asphalt footpath
	Raised Setts
	Cycle route
	Shared surface (Cycle route)
	Shared surface (pre-cast concrete paving)
	Shared surface (natural stone paving)
	Shared surface (asphalt footpath)
	Grasscrete or similar approved
	Proposed trees
	Existing trees
	Proposed grass
	Proposed ground-cover shrub planting
	Proposed raised planter
	Proposed/retained cycle racks (8no provided; indicative location)
	Tram/ Cycle interface road markings (indicative)
	Tactile paving (Indicative)
	Existing/ proposed walls
	Parking bays
	Loading bays
	Bin locations
	Trees within raised planters

P12	23/11/21	Updates to reflect Contractor's design	BF	SS	SB	SM
P11	05/08/21	ELEVENTH ISSUE	AM	SS	SB	SM
P10	19/05/21	TENTH ISSUE	LL	SS	SB	SM
P09	18/09/20	NINTH ISSUE	LL	SS	SB	SM
P08	16/06/20	EIGHTH ISSUE	LL	SS	SB	SM
P07	26/04/19	SEVENTH ISSUE	LL	SS	SB	SM
P06	29/01/19	SIXTH ISSUE	RP	SB	SB	SM
P05	17/12/18	FIFTH ISSUE	RP	SB	SB	SM
P04	05/10/18	FOURTH ISSUE	RP	SB	SB	SM
P03	29/09/18	THIRD ISSUE	RP	SB	SB	SM
P02	14/03/18	SECOND ISSUE	SW	SB	SB	SM
P01	06/03/18	FIRST ISSUE	SW	SB	SB	SM
Rev.	Date	Description	Org	Chk'd	App'd	Aur'd

Drawing Status: **FOR INFORMATION** Suitability: **S2**

ATKINS 6th Floor
200 Broomielaw
Glasgow
Scotland
G1 4RU
Tel: +44 (0)141 220 2000
Fax: +44 (0)141 220 2001
www.atkinsglobal.com

Copyright © Atkins Limited (2013)

EDINBURGH
THE CITY OF EDINBURGH COUNCIL

Project Title: **EDINBURGH TRAM
YORK PLACE TO NEWHAVEN**

Drawing Title: **LANDSCAPE PROPOSALS
SHEET 8 OF 14**

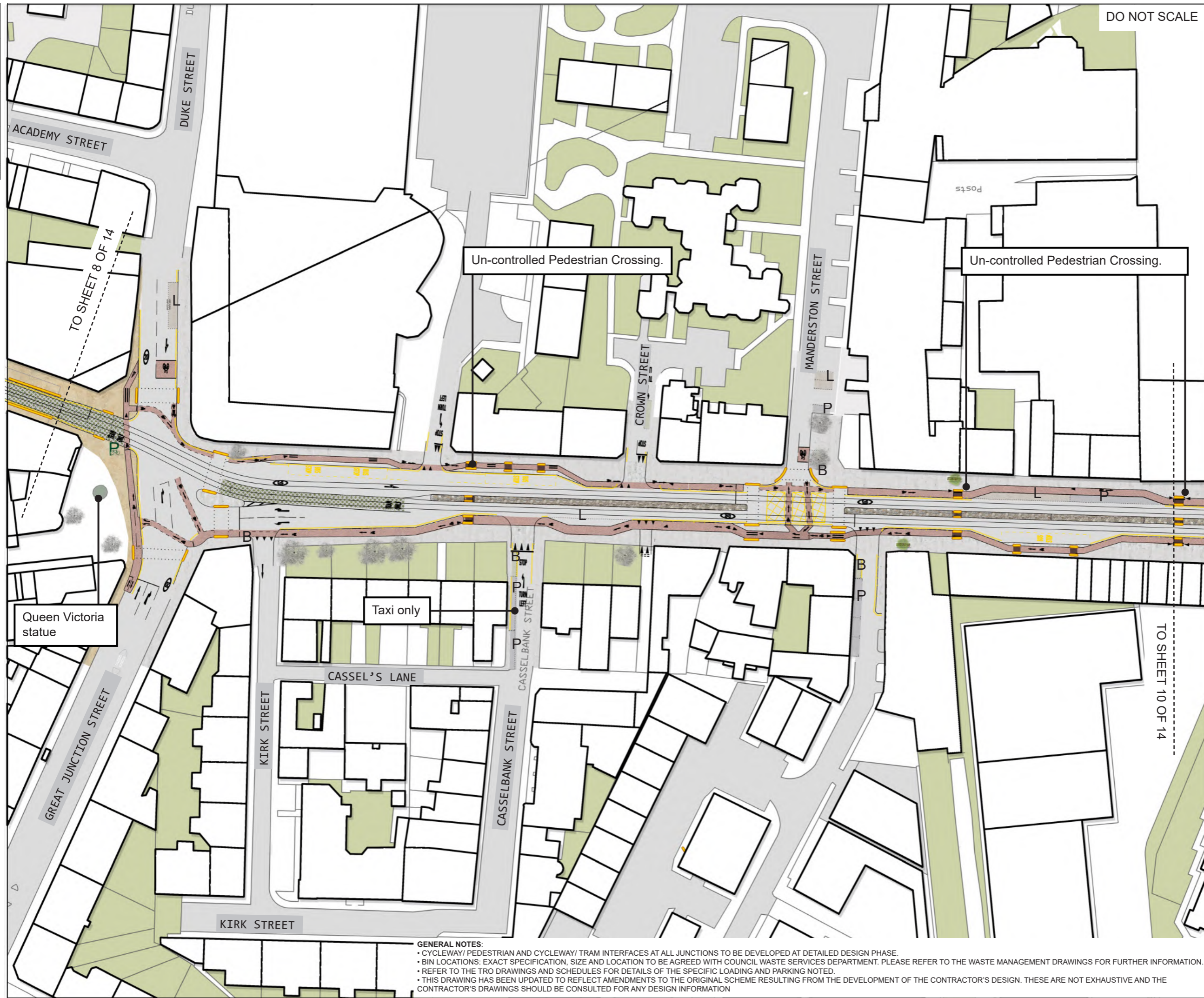
Scale	Originator	Checked	Approved	Authorised
1:500	LL	SS	SB	SM
Original Size	Date	Date	Date	Date
A1	23/11/21	23/11/21	23/11/21	23/11/21
Drawing Number	Revision			
5149899-ATK-ETE-DRG-EN-00008	P12			

GENERAL NOTES:

- CYCLEWAY/ PEDESTRIAN AND CYCLEWAY/ TRAM INTERFACES AT ALL JUNCTIONS TO BE DEVELOPED AT DETAILED DESIGN PHASE.
- BIN LOCATIONS: EXACT SPECIFICATION, SIZE AND LOCATION TO BE AGREED WITH COUNCIL WASTE SERVICES DEPARTMENT. PLEASE REFER TO THE WASTE MANAGEMENT DRAWINGS FOR FURTHER INFORMATION.
- REFER TO THE TRO DRAWINGS AND SCHEDULES FOR DETAILS OF THE SPECIFIC LOADING AND PARKING NOTED.
- THIS DRAWING HAS BEEN UPDATED TO REFLECT AMENDMENTS TO THE ORIGINAL SCHEME RESULTING FROM THE DEVELOPMENT OF THE CONTRACTOR'S DESIGN. THESE ARE NOT EXHAUSTIVE AND THE CONTRACTOR'S DRAWINGS SHOULD BE CONSULTED FOR ANY DESIGN INFORMATION

0 10 100
Millimetres

DO NOT SCALE



- KEY**
- Pre-cast concrete paving
 - Natural stone paving
 - Asphalt footpath
 - Raised Setts
 - Cycle route
 - Shared surface (Cycle route)
 - Shared surface (pre-cast concrete paving)
 - Shared surface (natural stone paving)
 - Shared surface (asphalt footpath)
 - Grasscrete or similar approved
 - Proposed trees
 - Existing trees
 - Proposed grass
 - Proposed ground-cover shrub planting
 - Proposed raised planter
 - Proposed/ retained cycle racks (8no provided; indicative location)
 - Tram/ Cycle interface road markings (indicative)
 - Tactile paving (Indicative)
 - Existing/ proposed walls
 - Parking bays
 - Loading bays
 - Bin locations
 - Trees within raised planters

TO SHEET 8 OF 14

Un-controlled Pedestrian Crossing.

Un-controlled Pedestrian Crossing.

Queen Victoria statue

Taxi only

TO SHEET 10 OF 14

P12	23/11/21	Updates to reflect Contractor's design	BF	SS	SB	SM
P11	05/08/21	ELEVENTH ISSUE	AM	SS	SB	SM
P10	18/09/20	TENTH ISSUE	LL	SS	SB	SM
P09	16/06/20	NINTH ISSUE	LL	SS	SB	SM
P08	30/08/19	EIGHTH ISSUE	LL	SS	SB	SM
P07	26/04/19	SEVENTH ISSUE	LL	SS	SB	SM
P06	29/01/19	SIXTH ISSUE	RP	SB	SB	SM
P05	17/12/18	FIFTH ISSUE	RP	SB	SB	SM
P04	05/10/18	FOURTH ISSUE	RP	SB	SB	SM
P03	29/09/18	THIRD ISSUE	RP	SB	SB	SM
P02	14/03/18	SECOND ISSUE	SW	SB	SB	SM
P01	06/03/18	FIRST ISSUE	SW	SB	SB	SM
Rev.	Date	Description	Org	Chk'd	App'd	Aur'd

FOR INFORMATION S2

ATKINS 6th Floor
200 Broomielaw
Glasgow
Scotland
G1 4RU
Tel: +44 (0)141 220 2000
Fax: +44 (0)141 220 2001
www.atkinsglobal.com

Copyright © Atkins Limited (2013)

EDINBURGH
THE CITY OF EDINBURGH COUNCIL

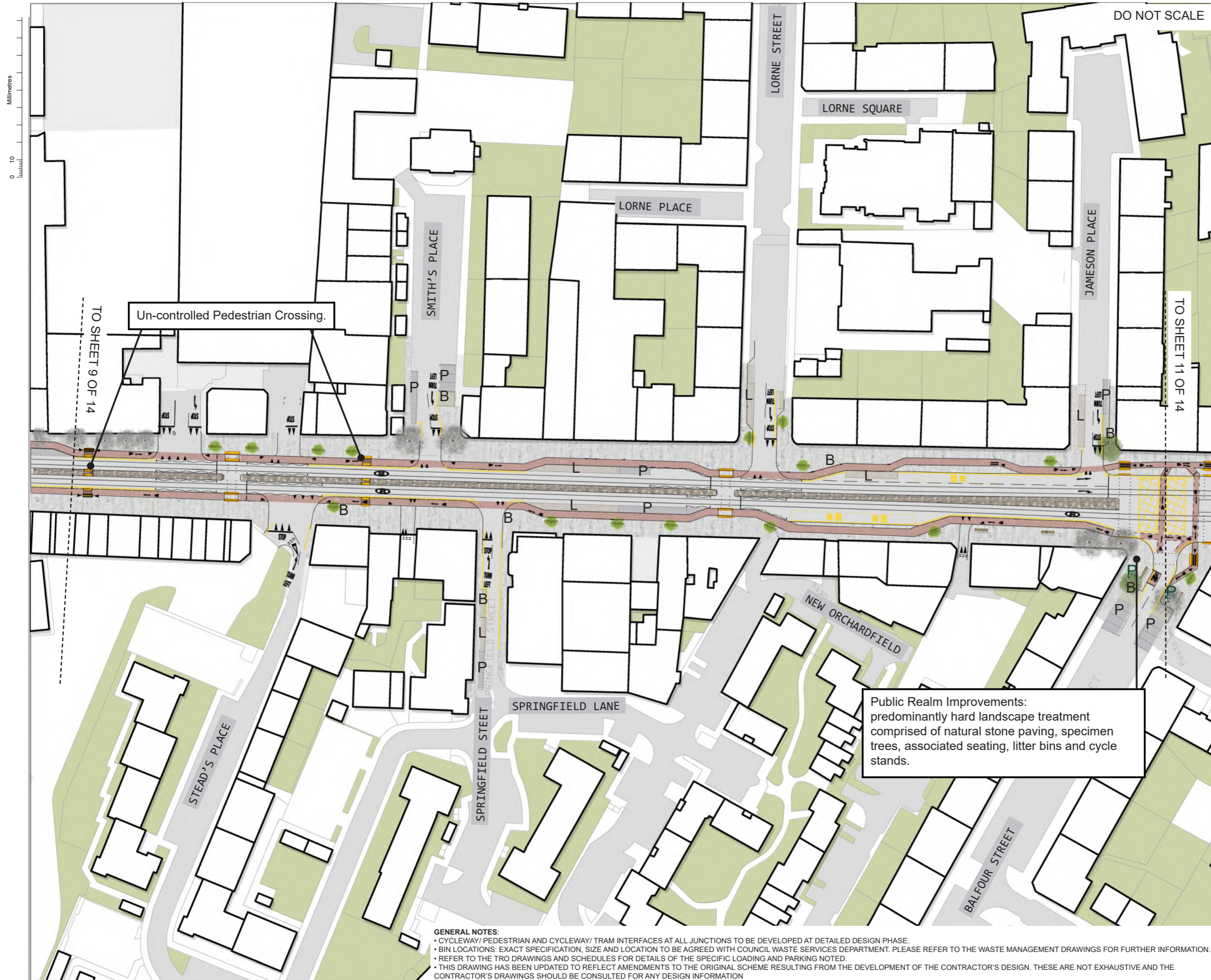
Project Title
**EDINBURGH TRAM
YORK PLACE TO NEWHAVEN**

Drawing Title
**LANDSCAPE PROPOSALS
SHEET 9 OF 14**

GENERAL NOTES:

- CYCLEWAY/ PEDESTRIAN AND CYCLEWAY/ TRAM INTERFACES AT ALL JUNCTIONS TO BE DEVELOPED AT DETAILED DESIGN PHASE.
- BIN LOCATIONS: EXACT SPECIFICATION, SIZE AND LOCATION TO BE AGREED WITH COUNCIL WASTE SERVICES DEPARTMENT. PLEASE REFER TO THE WASTE MANAGEMENT DRAWINGS FOR FURTHER INFORMATION.
- REFER TO THE TRO DRAWINGS AND SCHEDULES FOR DETAILS OF THE SPECIFIC LOADING AND PARKING NOTED.
- THIS DRAWING HAS BEEN UPDATED TO REFLECT AMENDMENTS TO THE ORIGINAL SCHEME RESULTING FROM THE DEVELOPMENT OF THE CONTRACTOR'S DESIGN. THESE ARE NOT EXHAUSTIVE AND THE CONTRACTOR'S DRAWINGS SHOULD BE CONSULTED FOR ANY DESIGN INFORMATION

Scale	Original	Checked	Approved	Authorised
1:500	LL	SS	SB	SM
Original Size	Date	Date	Date	Date
A1	23/11/21	23/11/21	23/11/21	23/11/21
Drawing Number	Revision			
5149899-ATK-ETE-DRG-EN-00009	P12			



- KEY**
- Pre-cast concrete paving
 - Natural stone paving
 - Asphalt footpath
 - Raised Setts
 - Cycle route
 - Shared surface (Cycle route)
 - Shared surface (pre-cast concrete paving)
 - Shared surface (natural stone paving)
 - Shared surface (asphalt footpath)
 - Grasscrete or similar approved
 - Proposed trees
 - Existing trees
 - Proposed grass
 - Proposed ground-cover shrub planting
 - Proposed raised planter
 - Proposed/ retained cycle racks (8no provided; indicative location)
 - Tram/ Cycle interface road markings (indicative)
 - Tactile paving (Indicative)
 - Existing/ proposed walls
 - Parking bays
 - Loading bays
 - Bin locations
 - Trees within raised planters

P12	23/11/21	Updates to reflect Contractor's design	BF	SS	SB	SM
P11	05/08/21	ELEVENTH ISSUE	AM	SS	SB	SM
P10	05/08/21	TENTH ISSUE	AM	SS	SB	SM
P09	19/05/21	NINTH ISSUE	LL	SS	SB	SM
P08	18/09/20	EIGHTH ISSUE	LL	SS	SB	SM
P07	16/06/20	SEVENTH ISSUE	LL	SS	SB	SM
P06	26/04/19	SIXTH ISSUE	LL	SB	SB	SM
P05	29/01/19	FIFTH ISSUE	RP	SB	SB	SM
P04	05/10/18	FOURTH ISSUE	RP	SB	SB	SM
P03	29/09/18	THIRD ISSUE	RP	SB	SB	SM
P02	14/03/18	SECOND ISSUE	SW	SB	SB	SM
P01	06/03/18	FIRST ISSUE	SW	SB	SB	SM
Rev.	Date	Description	Org	Chk'd	App'd	Aur'd

Drawing Status: **FOR INFORMATION** Suitability: **S2**

ATKINS 6th Floor
200 Broomielaw
Glasgow
Scotland
G1 4RU
Tel: +44 (0)141 220 2000
Fax: +44 (0)141 220 2001
www.atkinsglobal.com

Copyright © Atkins Limited (2013)

EDINBURGH
THE CITY OF EDINBURGH COUNCIL

Project Title: **EDINBURGH TRAM
YORK PLACE TO NEWHAVEN**

Drawing Title: **LANDSCAPE PROPOSALS
SHEET 10 OF 14**

Scale	Original	Checked	Approved	Authorised
1:500	LL	SS	SB	SM
Original Size	Date	Date	Date	Date
A1	23/11/21	23/11/21	23/11/21	23/11/21
Drawing Number	Revision			
5149899-ATK-ETE-DRG-EN-00010	P12			

GENERAL NOTES:

- CYCLEWAY/ PEDESTRIAN AND CYCLEWAY/ TRAM INTERFACES AT ALL JUNCTIONS TO BE DEVELOPED AT DETAILED DESIGN PHASE.
- BIN LOCATIONS: EXACT SPECIFICATION, SIZE AND LOCATION TO BE AGREED WITH COUNCIL WASTE SERVICES DEPARTMENT. PLEASE REFER TO THE WASTE MANAGEMENT DRAWINGS FOR FURTHER INFORMATION.
- REFER TO THE TRO DRAWINGS AND SCHEDULES FOR DETAILS OF THE SPECIFIC LOADING AND PARKING NOTED.
- THIS DRAWING HAS BEEN UPDATED TO REFLECT AMENDMENTS TO THE ORIGINAL SCHEME RESULTING FROM THE DEVELOPMENT OF THE CONTRACTOR'S DESIGN. THESE ARE NOT EXHAUSTIVE AND THE CONTRACTOR'S DRAWINGS SHOULD BE CONSULTED FOR ANY DESIGN INFORMATION

0 10 100
Millimetres

DO NOT SCALE



KEY	
	Pre-cast concrete paving
	Natural stone paving
	Asphalt footpath
	Raised Setts
	Cycle route
	Shared surface (Cycle route)
	Shared surface (pre-cast concrete paving)
	Shared surface (natural stone paving)
	Shared surface (asphalt footpath)
	Grasscrete or similar approved
	Proposed trees
	Existing trees
	Proposed grass
	Proposed ground-cover shrub planting
	Proposed raised planter
	Proposed/ retained cycle racks (8no provided; indicative location)
	Tram/ Cycle interface road markings (indicative)
	Tactile paving (Indicative)
	Existing/ proposed walls
	Parking bays
	Loading bays
	Bin locations
	Trees within raised planters

P12	23/11/21	Updates to reflect Contractor's design	BF	SS	SB	SM
P11	05/08/21	ELEVENTH ISSUE	AM	SS	SB	SM
P10	05/08/21	TENTH ISSUE				
P09	18/09/20	NINTH ISSUE	AM	SS	SB	SM
P08	19/05/21	EIGHTH ISSUE	LL	SS	SB	SM
P07	18/09/20	SEVENTH ISSUE	LL	SS	SB	SM
P06	16/06/20	SIXTH ISSUE	LL	SS	SB	SM
P05	29/01/19	FIFTH ISSUE	RP	SB	SB	SM
P04	05/10/18	FOURTH ISSUE	RP	SB	SB	SM
P03	29/09/18	THIRD ISSUE	RP	SB	SB	SM
P02	14/03/18	SECOND ISSUE	SW	SB	SB	SM
P01	06/03/18	FIRST ISSUE	SW	SB	SB	SM
Rev.	Date	Description	Org	Chkd	App'd	Aur'd

FOR INFORMATION S2

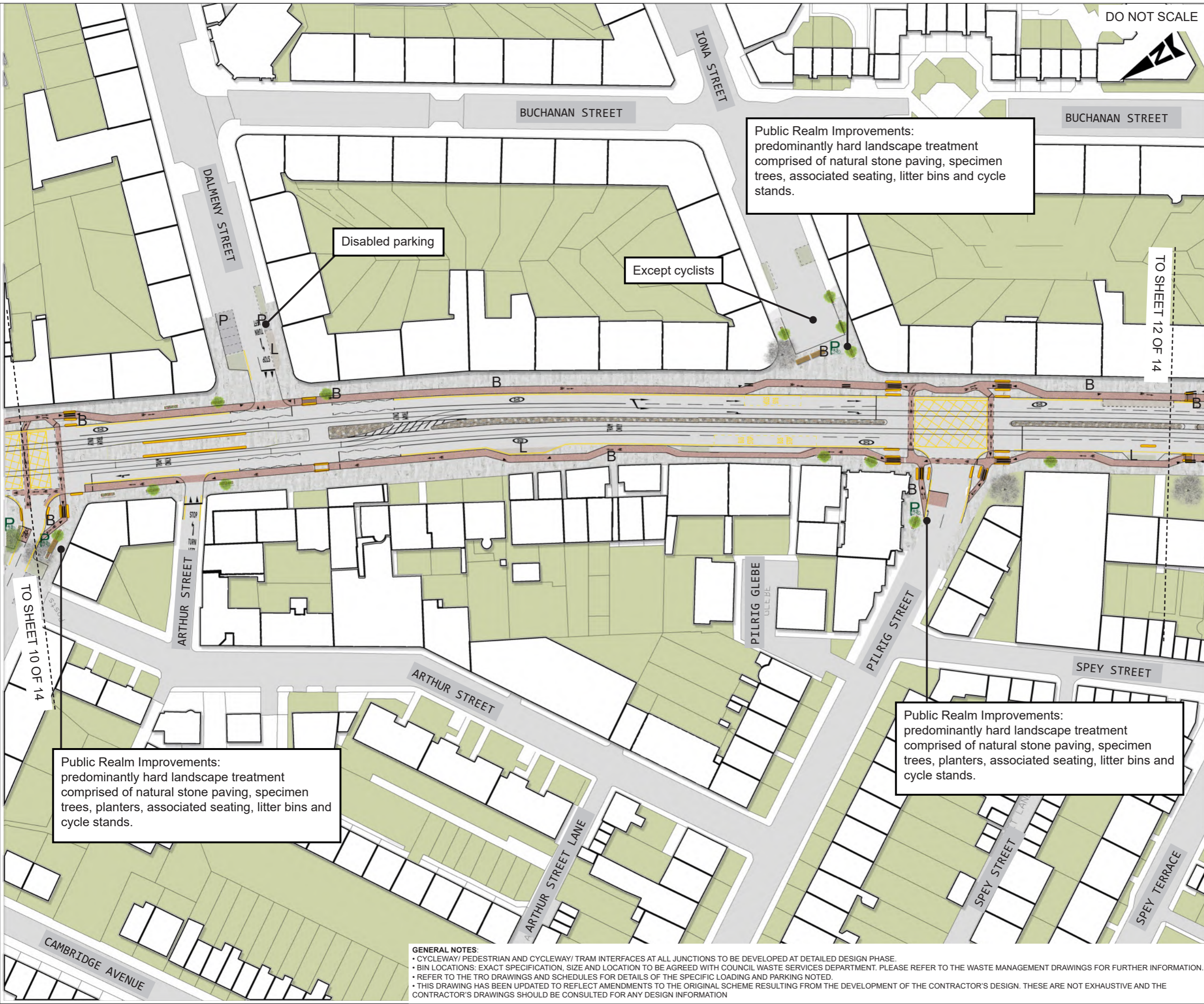
ATKINS
 6th Floor
 200 Broomielaw
 Glasgow
 Scotland
 G1 4RU
 Tel: +44 (0)141 220 2000
 Fax: +44 (0)141 220 2001
 www.atkinsglobal.com

Copyright © Atkins Limited (2013)
EDINBURGH
 THE CITY OF EDINBURGH COUNCIL

Project Title
**EDINBURGH TRAM
 YORK PLACE TO NEWHAVEN**

Drawing Title
**LANDSCAPE PROPOSALS
 SHEET 11 OF 14**

Scale	Original	Checked	Approved	Authorised
1:500	LL	SS	SB	SM
Original Size	Date	Date	Date	Date
A1	23/11/21	23/11/21	23/11/21	23/11/21
Drawing Number	Revision			
5149899-ATK-ETE-DRG-EN-00011	P12			



Public Realm Improvements:
 predominantly hard landscape treatment
 comprised of natural stone paving, specimen
 trees, associated seating, litter bins and cycle
 stands.

Disabled parking

Except cyclists

TO SHEET 12 OF 14

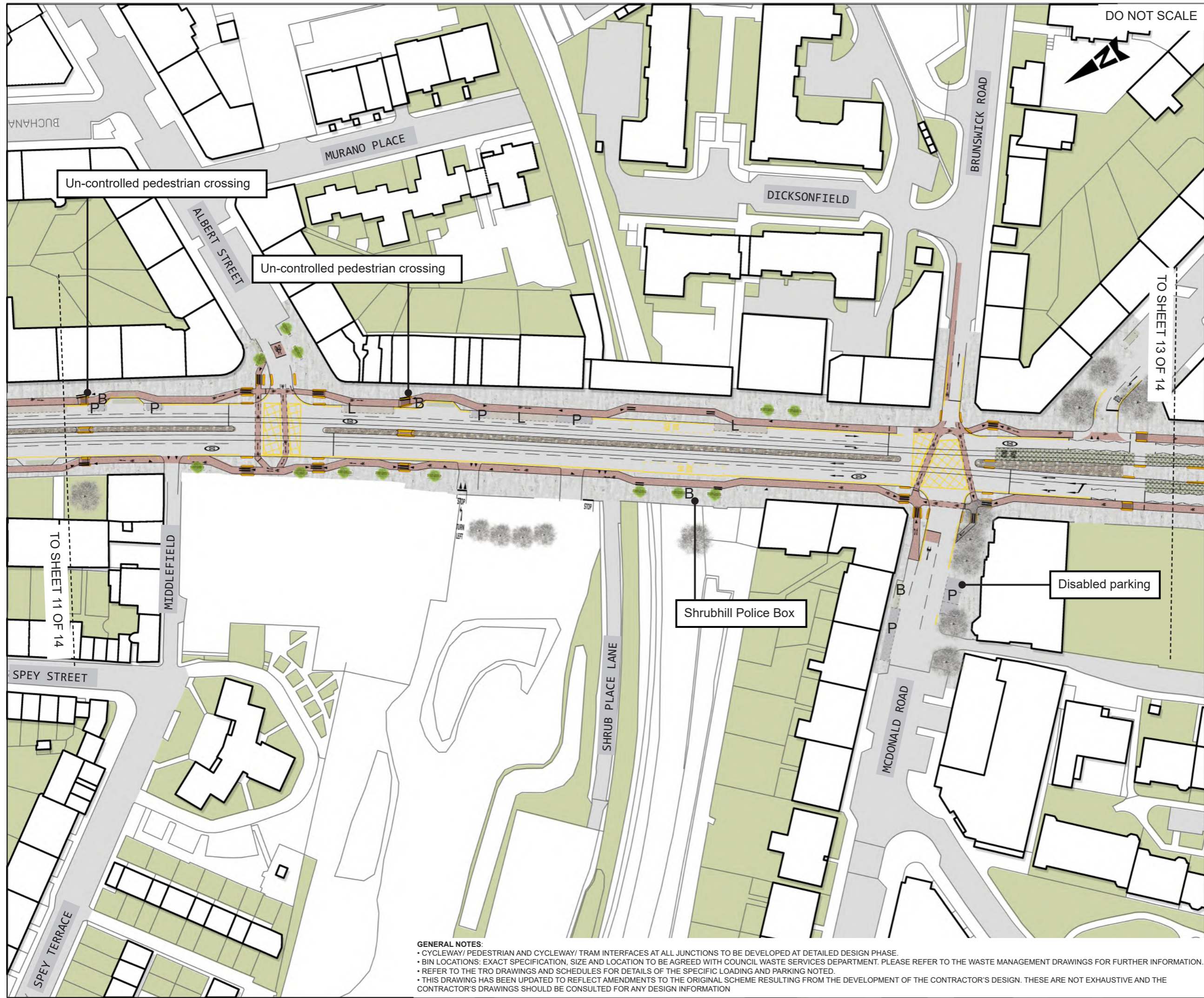
TO SHEET 10 OF 14

Public Realm Improvements:
 predominantly hard landscape treatment
 comprised of natural stone paving, specimen
 trees, planters, associated seating, litter bins and
 cycle stands.

Public Realm Improvements:
 predominantly hard landscape treatment
 comprised of natural stone paving, specimen
 trees, planters, associated seating, litter bins and
 cycle stands.

GENERAL NOTES:
 • CYCLEWAY/ PEDESTRIAN AND CYCLEWAY/ TRAM INTERFACES AT ALL JUNCTIONS TO BE DEVELOPED AT DETAILED DESIGN PHASE.
 • BIN LOCATIONS: EXACT SPECIFICATION, SIZE AND LOCATION TO BE AGREED WITH COUNCIL WASTE SERVICES DEPARTMENT. PLEASE REFER TO THE WASTE MANAGEMENT DRAWINGS FOR FURTHER INFORMATION.
 • REFER TO THE TRO DRAWINGS AND SCHEDULES FOR DETAILS OF THE SPECIFIC LOADING AND PARKING NOTED.
 • THIS DRAWING HAS BEEN UPDATED TO REFLECT AMENDMENTS TO THE ORIGINAL SCHEME RESULTING FROM THE DEVELOPMENT OF THE CONTRACTOR'S DESIGN. THESE ARE NOT EXHAUSTIVE AND THE CONTRACTOR'S DRAWINGS SHOULD BE CONSULTED FOR ANY DESIGN INFORMATION

0 10 100
Millimetres



DO NOT SCALE

KEY	
	Pre-cast concrete paving
	Natural stone paving
	Asphalt footpath
	Raised Setts
	Cycle route
	Shared surface (Cycle route)
	Shared surface (pre-cast concrete paving)
	Shared surface (natural stone paving)
	Shared surface (asphalt footpath)
	Grasscrete or similar approved
	Proposed trees
	Existing trees
	Proposed grass
	Proposed ground-cover shrub planting
	Proposed raised planter
	Proposed/ retained cycle racks (8no provided; indicative location)
	Tram/ Cycle interface road markings (indicative)
	Tactile paving (Indicative)
	Existing/ proposed walls
	Parking bays
	Loading bays
	Bin locations
	Trees within raised planters

Rev.	Date	Description	Org	Chk'd	App'd	Aur'd
P12	23/11/21	Updates to reflect Contractor's design	BF	SS	SB	SM
P11	05/08/21	ELEVENTH ISSUE	AM	SS	SB	SM
P10	19/05/21	TENTH ISSUE	LL	SS	SB	SM
P09	18/09/20	NINTH ISSUE	LL	SS	SB	SM
P08	16/06/20	EIGHTH ISSUE	LL	SS	SB	SM
P07	26/04/19	SEVENTH ISSUE	LL	SB	SB	SM
P06	29/01/19	SIXTH ISSUE	RP	SB	SB	SM
P05	17/12/18	FIFTH ISSUE	RP	SB	SB	SM
P04	05/10/18	FOURTH ISSUE	RP	SB	SB	SM
P03	29/09/18	THIRD ISSUE	RP	SB	SB	SM
P02	14/03/18	SECOND ISSUE	SW	SB	SB	SM
P01	06/03/18	FIRST ISSUE	SW	SB	SB	SM

FOR INFORMATION S2

ATKINS
 6th Floor
 200 Broomielaw
 Glasgow
 Scotland
 G1 4RU
 Tel: +44 (0)141 220 2000
 Fax: +44 (0)141 220 2001
 www.atkinsglobal.com

EDINBURGH
 THE CITY OF EDINBURGH COUNCIL

Project Title
**EDINBURGH TRAM
 YORK PLACE TO NEWHAVEN**

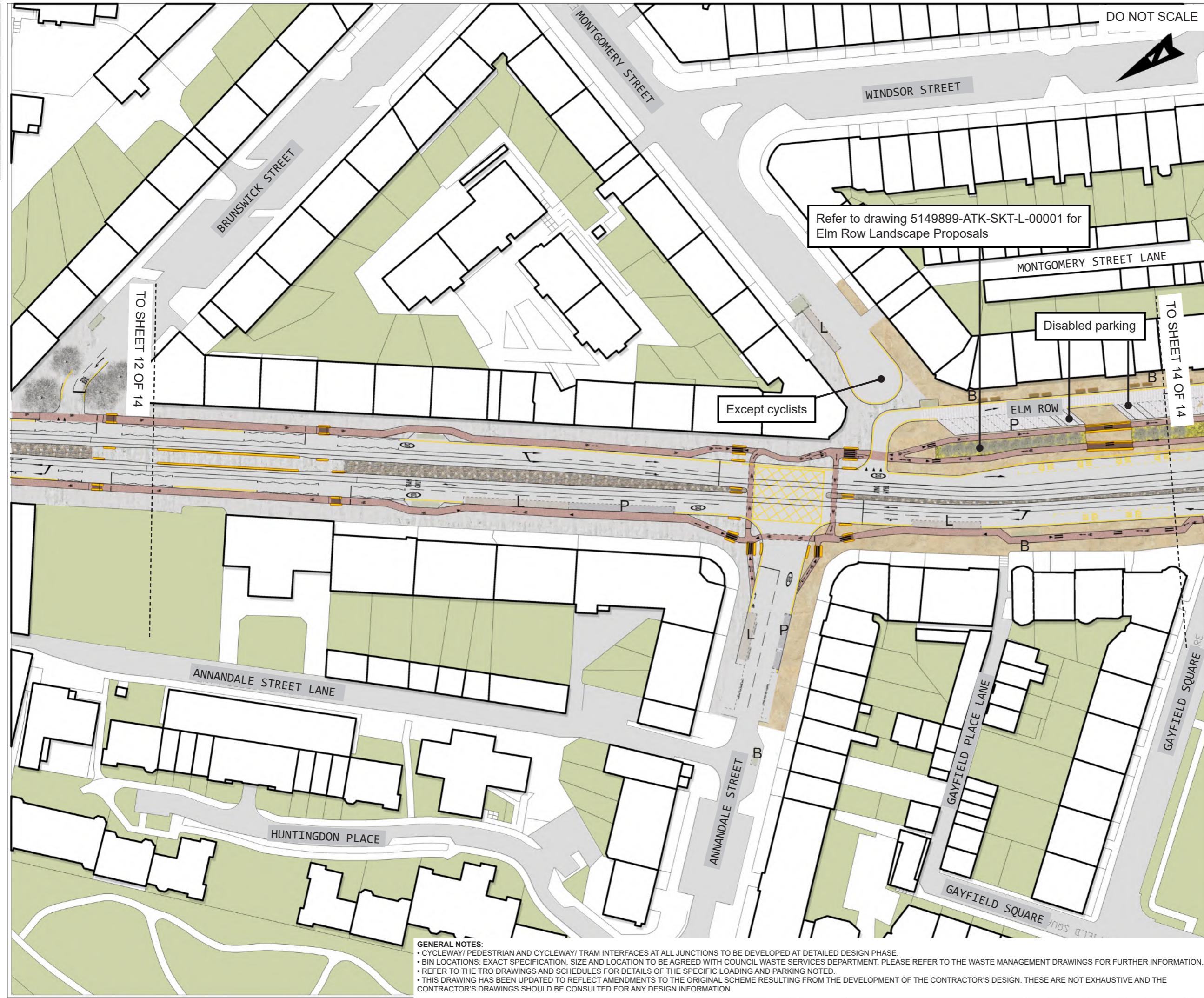
Drawing Title
**LANDSCAPE PROPOSALS
 SHEET 12 OF 14**

Scale	Original	Checked	Approved	Authorised
Original Size	Date	Date	Date	Date
1:500	LL	SS	SB	SM
A1	23/11/21	23/11/21	23/11/21	23/11/21
Drawing Number	5149899-ATK-ETE-DRG-EN-00012			Revision P12

GENERAL NOTES:
 • CYCLEWAY/ PEDESTRIAN AND CYCLEWAY/ TRAM INTERFACES AT ALL JUNCTIONS TO BE DEVELOPED AT DETAILED DESIGN PHASE.
 • BIN LOCATIONS: EXACT SPECIFICATION, SIZE AND LOCATION TO BE AGREED WITH COUNCIL WASTE SERVICES DEPARTMENT. PLEASE REFER TO THE WASTE MANAGEMENT DRAWINGS FOR FURTHER INFORMATION.
 • REFER TO THE TRO DRAWINGS AND SCHEDULES FOR DETAILS OF THE SPECIFIC LOADING AND PARKING NOTED.
 • THIS DRAWING HAS BEEN UPDATED TO REFLECT AMENDMENTS TO THE ORIGINAL SCHEME RESULTING FROM THE DEVELOPMENT OF THE CONTRACTOR'S DESIGN. THESE ARE NOT EXHAUSTIVE AND THE CONTRACTOR'S DRAWINGS SHOULD BE CONSULTED FOR ANY DESIGN INFORMATION

0 10 100
Millimetres

DO NOT SCALE



KEY

- Pre-cast concrete paving
- Natural stone paving
- Asphalt footpath
- Raised Setts
- Cycle route
- Shared surface (Cycle route)
- Shared surface (pre-cast concrete paving)
- Shared surface (natural stone paving)
- Shared surface (asphalt footpath)
- Grasscrete or similar approved
- Proposed trees
- Existing trees
- Proposed grass
- Proposed ground-cover shrub planting
- Proposed raised planter
- Proposed/ retained cycle racks (8no provided; indicative location)
- Tram/ Cycle interface road markings (indicative)
- Tactile paving (Indicative)
- Existing/ proposed walls
- Parking bays
- Loading bays
- Bin locations
- Trees within raised planters

P12	23/11/21	Updates to reflect Contractor's design	BF	SS	SB	SM
P11	05/08/21	ELEVENTH ISSUE	AM	SS	SB	SM
P10	19/05/21	TENTH ISSUE	LL	SS	SB	SM
P09	18/09/20	NINTH ISSUE	LL	SS	SB	SM
P08	16/06/20	EIGHTH ISSUE	LL	SS	SB	SM
P07	26/04/19	SEVENTH ISSUE	LL	SS	SB	SM
P06	29/01/19	SIXTH ISSUE	RP	SB	SB	SM
P05	17/12/18	FIFTH ISSUE	RP	SB	SB	SM
P04	05/10/18	FOURTH ISSUE	RP	SB	SB	SM
P03	29/09/18	THIRD ISSUE	RP	SB	SB	SM
P02	14/03/18	SECOND ISSUE	SW	SB	SB	SM
P01	06/03/18	FIRST ISSUE	SW	SB	SB	SM
Rev.	Date	Description	Org	Chk'd	App'd	Aur'd

FOR INFORMATION S2

ATKINS 6th Floor
200 Broomielaw
Glasgow
Scotland
G1 4RU
Tel: +44 (0)141 220 2000
Fax: +44 (0)141 220 2001
www.atkinsglobal.com

Copyright © Atkins Limited (2013)

EDINBURGH
THE CITY OF EDINBURGH COUNCIL

Project Title
**EDINBURGH TRAM
YORK PLACE TO NEWHAVEN**

Drawing Title
**LANDSCAPE PROPOSALS
SHEET 13 OF 14**

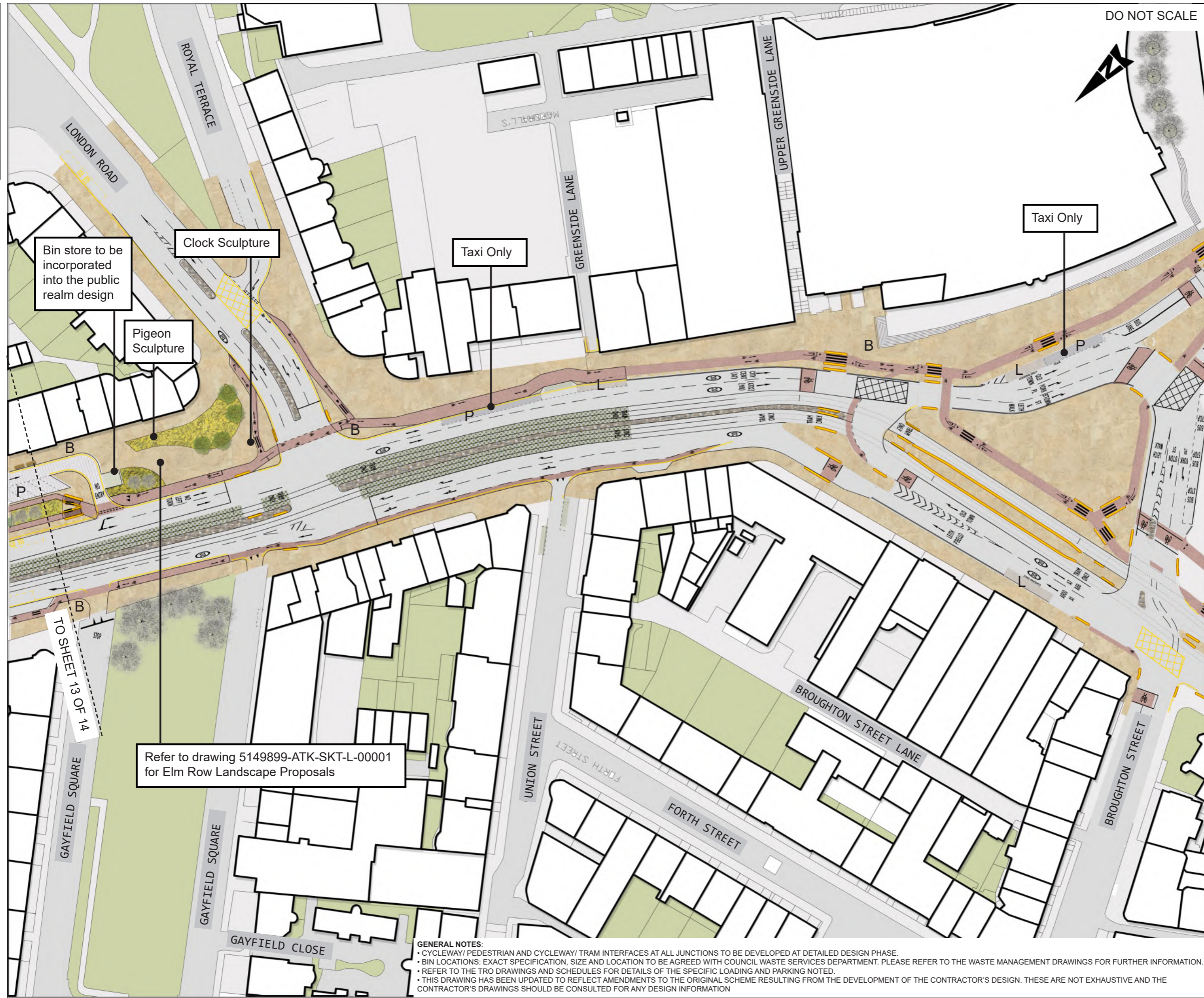
Scale 1:500	Original Size A1	Originalator LL	Checked SS	Approved SB	Authorised SM
Date 23/11/21	Date 23/11/21	Date 23/11/21	Date 23/11/21	Date 23/11/21	Date 23/11/21
Drawing Number 5149899-ATK-ETE-DRG-EN-00013	Revision P12				

GENERAL NOTES:

- CYCLEWAY/ PEDESTRIAN AND CYCLEWAY/ TRAM INTERFACES AT ALL JUNCTIONS TO BE DEVELOPED AT DETAILED DESIGN PHASE.
- BIN LOCATIONS: EXACT SPECIFICATION, SIZE AND LOCATION TO BE AGREED WITH COUNCIL WASTE SERVICES DEPARTMENT. PLEASE REFER TO THE WASTE MANAGEMENT DRAWINGS FOR FURTHER INFORMATION.
- REFER TO THE TRO DRAWINGS AND SCHEDULES FOR DETAILS OF THE SPECIFIC LOADING AND PARKING NOTED.
- THIS DRAWING HAS BEEN UPDATED TO REFLECT AMENDMENTS TO THE ORIGINAL SCHEME RESULTING FROM THE DEVELOPMENT OF THE CONTRACTOR'S DESIGN. THESE ARE NOT EXHAUSTIVE AND THE CONTRACTOR'S DRAWINGS SHOULD BE CONSULTED FOR ANY DESIGN INFORMATION

0 10 100
Millimetres

DO NOT SCALE



- KEY**
- Pre-cast concrete paving
 - Natural stone paving
 - Asphalt footpath
 - Raised Setts
 - Cycle route
 - Shared surface (Cycle route)
 - Shared surface (pre-cast concrete paving)
 - Shared surface (natural stone paving)
 - Shared surface (asphalt footpath)
 - Grasscrete or similar approved
 - Proposed trees
 - Existing trees
 - Proposed grass
 - Proposed ground-cover shrub planting
 - Proposed raised planter
 - Proposed/ retained cycle racks (8no provided; indicative location)
 - Tram/ Cycle interface road markings (indicative)
 - Tactile paving (Indicative)
 - Existing/ proposed walls
 - Parking bays
 - Loading bays
 - Bin locations
 - Trees within raised planters

Bin store to be incorporated into the public realm design

Clock Sculpture

Pigeon Sculpture

Taxi Only

Taxi Only

Refer to drawing 5149899-ATK-SKT-L-00001 for Elm Row Landscape Proposals

TO SHEET 13 OF 14

GENERAL NOTES:

- CYCLEWAY/ PEDESTRIAN AND CYCLEWAY/ TRAM INTERFACES AT ALL JUNCTIONS TO BE DEVELOPED AT DETAILED DESIGN PHASE.
- BIN LOCATIONS: EXACT SPECIFICATION, SIZE AND LOCATION TO BE AGREED WITH COUNCIL WASTE SERVICES DEPARTMENT. PLEASE REFER TO THE WASTE MANAGEMENT DRAWINGS FOR FURTHER INFORMATION.
- REFER TO THE TRO DRAWINGS AND SCHEDULES FOR DETAILS OF THE SPECIFIC LOADING AND PARKING NOTED.
- THIS DRAWING HAS BEEN UPDATED TO REFLECT AMENDMENTS TO THE ORIGINAL SCHEME RESULTING FROM THE DEVELOPMENT OF THE CONTRACTOR'S DESIGN. THESE ARE NOT EXHAUSTIVE AND THE CONTRACTOR'S DRAWINGS SHOULD BE CONSULTED FOR ANY DESIGN INFORMATION

Rev.	Date	Description	Org	Chk'd	App'd	Aur'd
P12	23/11/21	Updates to reflect Contractor's design	BF	SS	SB	SM
P11	05/08/21	ELEVENTH ISSUE	AM	SS	SB	SM
P10	04/08/21	TENTH ISSUE	AM	SS	SB	SM
PO9	19/05/21	NINTH ISSUE	LL	SS	SB	SM
P08	18/09/20	EIGHTH ISSUE	LL	SS	SB	SM
P07	16/06/20	SEVENTH ISSUE	LL	SS	SB	SM
P06	26/04/19	SIXTH ISSUE	LL	SB	SB	SM
P05	29/01/19	FIFTH ISSUE	RP	SB	SB	SM
P04	05/10/18	FOURTH ISSUE	RP	SB	SB	SM
P03	29/09/18	THIRD ISSUE	RP	SB	SB	SM
P02	14/03/18	SECOND ISSUE	SW	SB	SB	SM
P01	06/03/18	FIRST ISSUE	SW	SB	SB	SM

FOR INFORMATION S2

ATKINS
 6th Floor
 200 Broomielaw
 Glasgow
 Scotland
 G1 4RU
 Tel: +44 (0)141 220 2000
 Fax: +44 (0)141 220 2001
 www.atkinsglobal.com

Copyright © Atkins Limited (2013)
EDINBURGH
 THE CITY OF EDINBURGH COUNCIL

Project Title
**EDINBURGH TRAM
 YORK PLACE TO NEWHAVEN**

Drawing Title
**LANDSCAPE PROPOSALS
 SHEET 14 OF 14**

Scale	Original	Checked	Approved	Authorised
1:500	LL	SS	SB	SM
Original Size	Date	Date	Date	Date
A1	23/11/21	23/11/21	23/11/21	23/11/21
Drawing Number	5149899-ATK-ETE-DRG-EN-00014			Revision
				P12