



# Joint Base McGuire-Dix-Lakehurst Airspace Briefing





# Discussion Topics

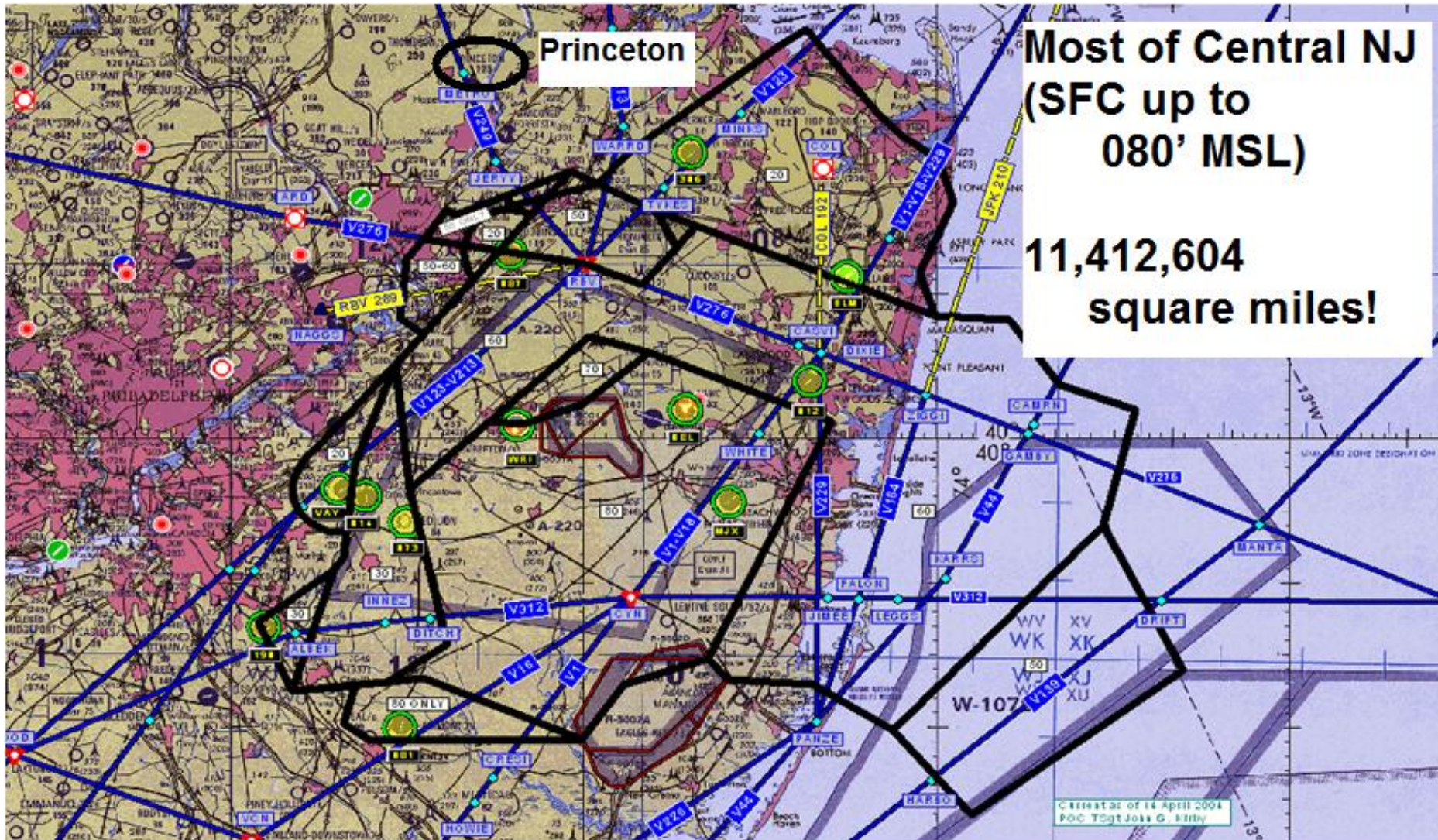
---

- **McGuire Airspace Configuration**
- **McGuire Approach Departure/Arrival Points**
- 
- **McGuire's Satellite Airports**
- **Class D Airspace/Procedures**
- **Local Special Use Airspace**
- **Philadelphia Class B Airspace**
- **BRAC/Joint Basing Integration**





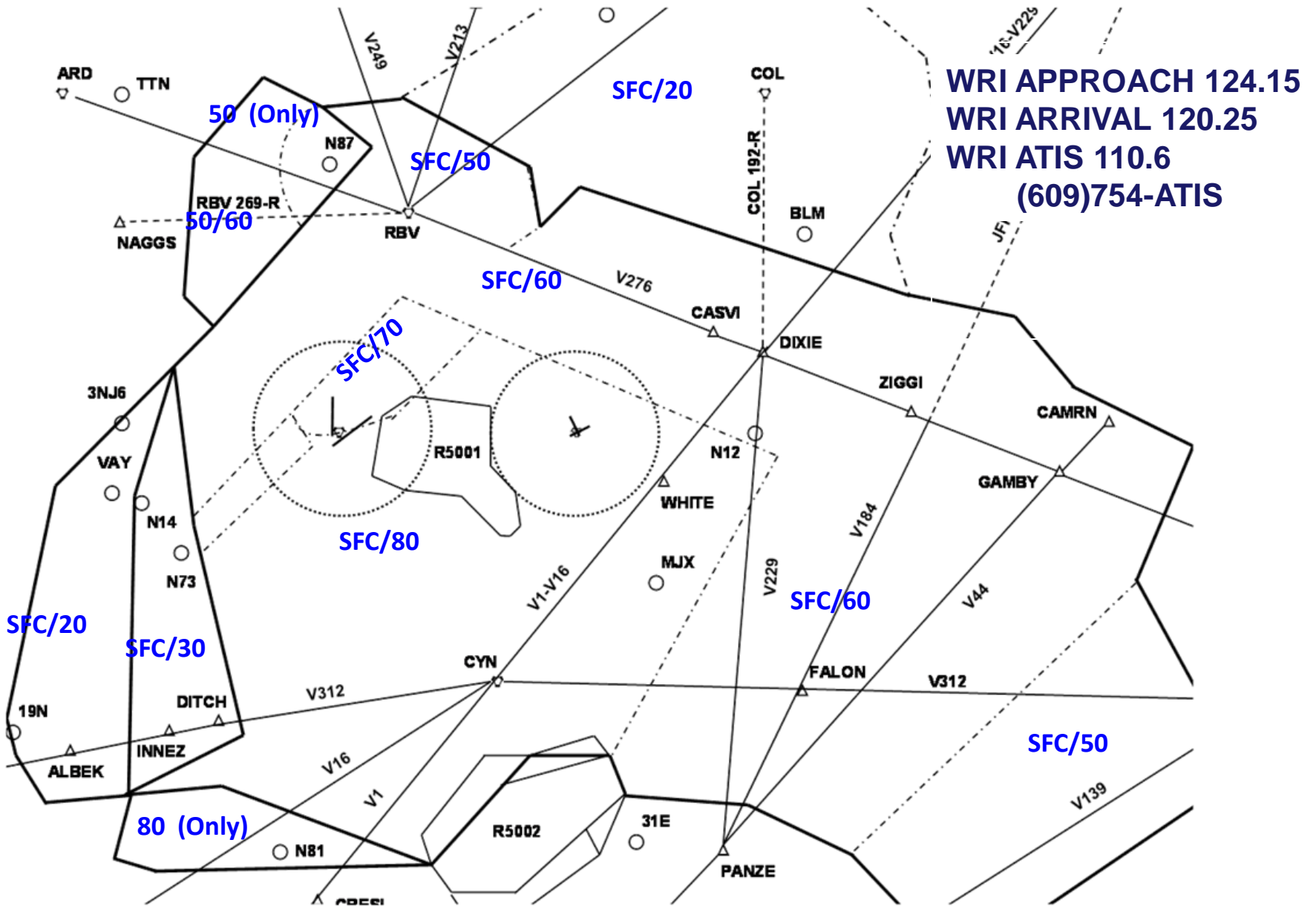
# McGuire Approach's Delegated Airspace



*America's Only Tri-Service Joint Base!*



# Current Airspace Configuration





# Adjacent Airspace

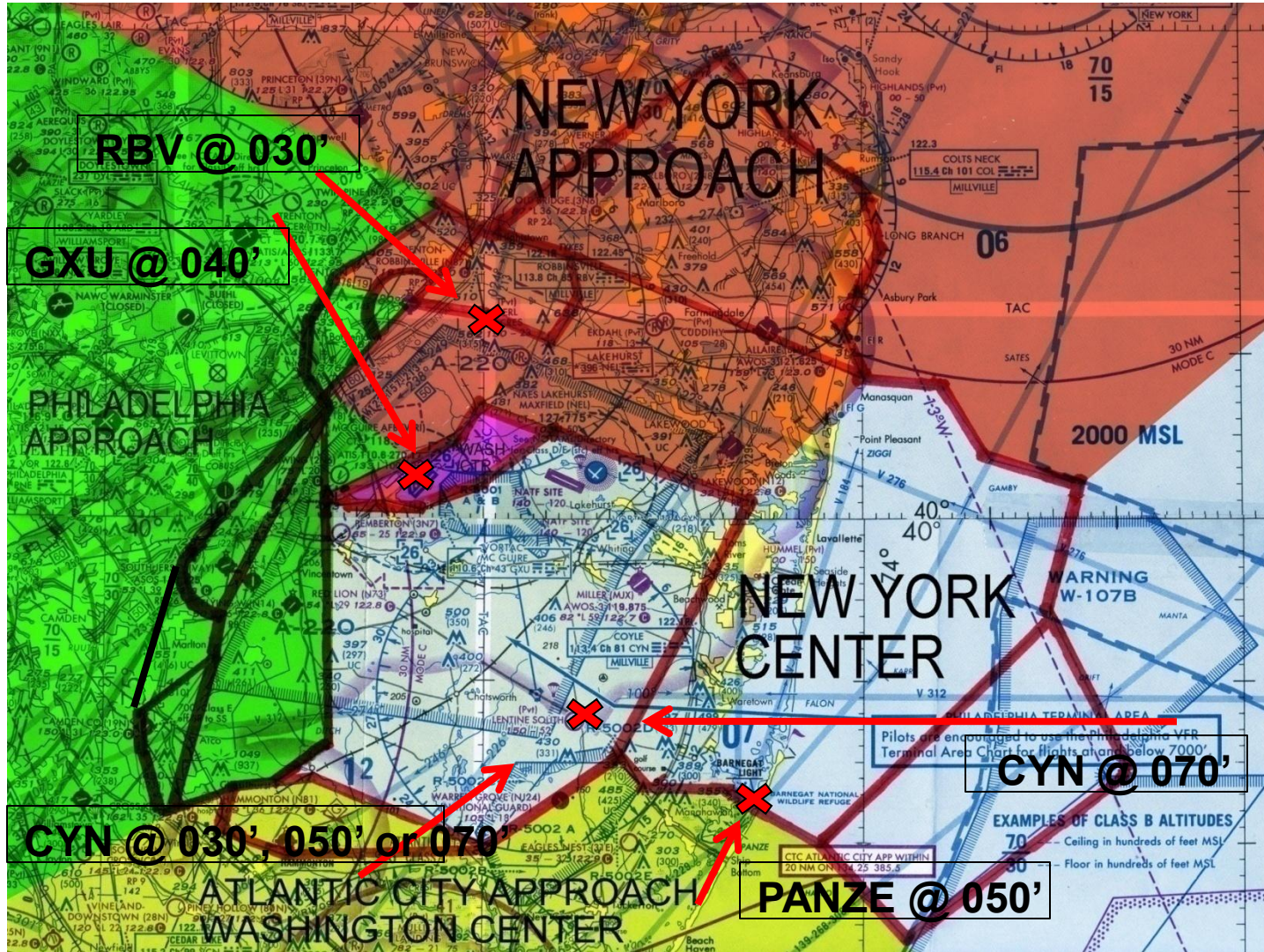


*America's Only Tri-Service Joint Base!*





# Arrival Points

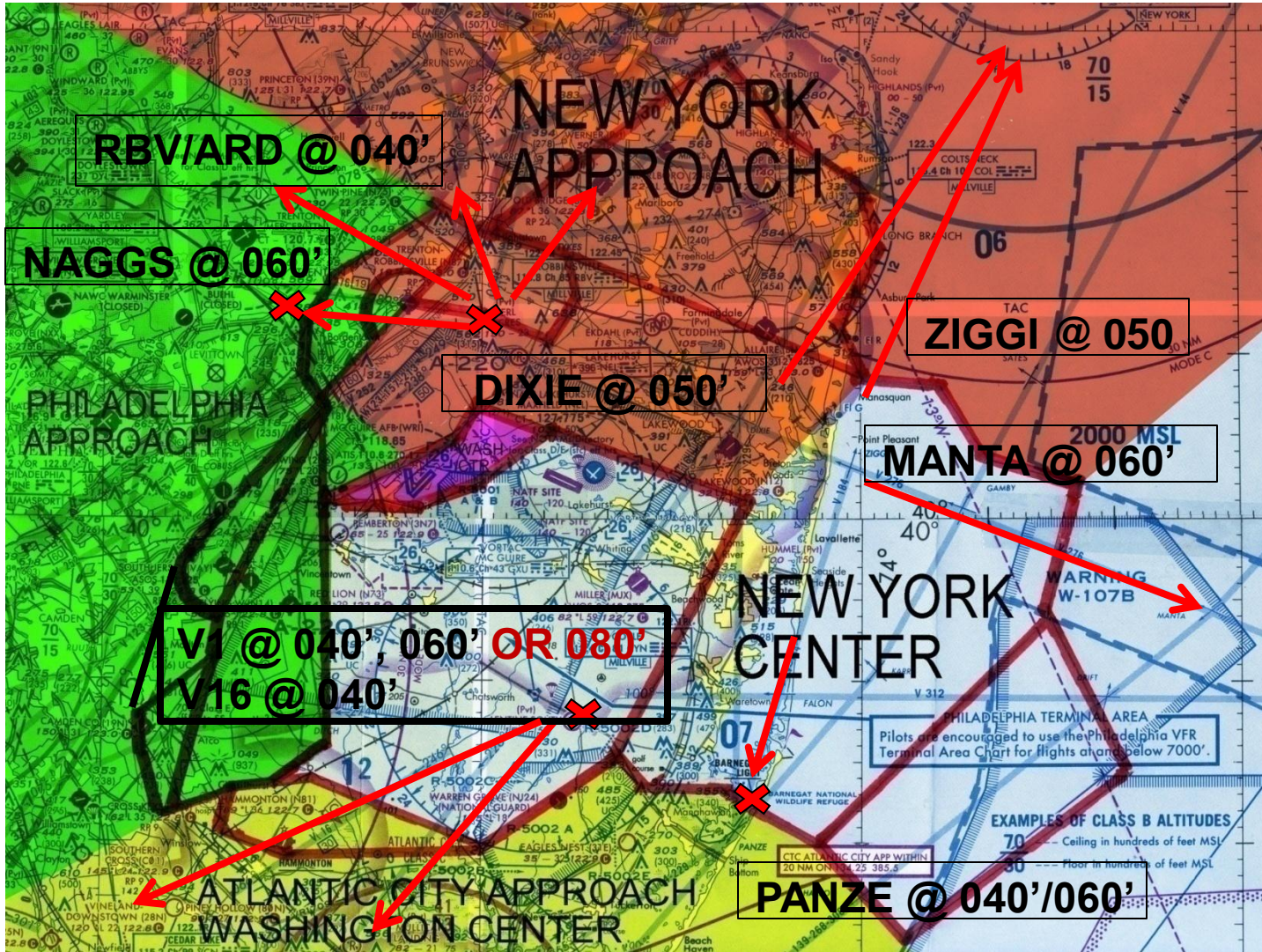


*America's Only Tri-Service Joint Base!*





# Departure Points



*America's Only Tri-Service Joint Base!*



# McGuire's 12 Satellite Airports

---

- ❑ Monmouth Executive (BLM)
- ❑ Old Bridge (3N6)
- ❑ Lakewood (N12)
- ❑ R.J. Miller (MJX)
- ❑ Hammonton (N81) **\*{Shared w/ ACY}**
- ❑ Pemberton (3N7)
- ❑ Redwing (2N6)
- ❑ Red Lion (N73)
- ❑ Flying W (N14)
- ❑ South Jersey Regional (VAY)
- ❑ Camden County (19N) **\*{Shared w/ PHL}**
- ❑ Trenton Robbinsville (N87)

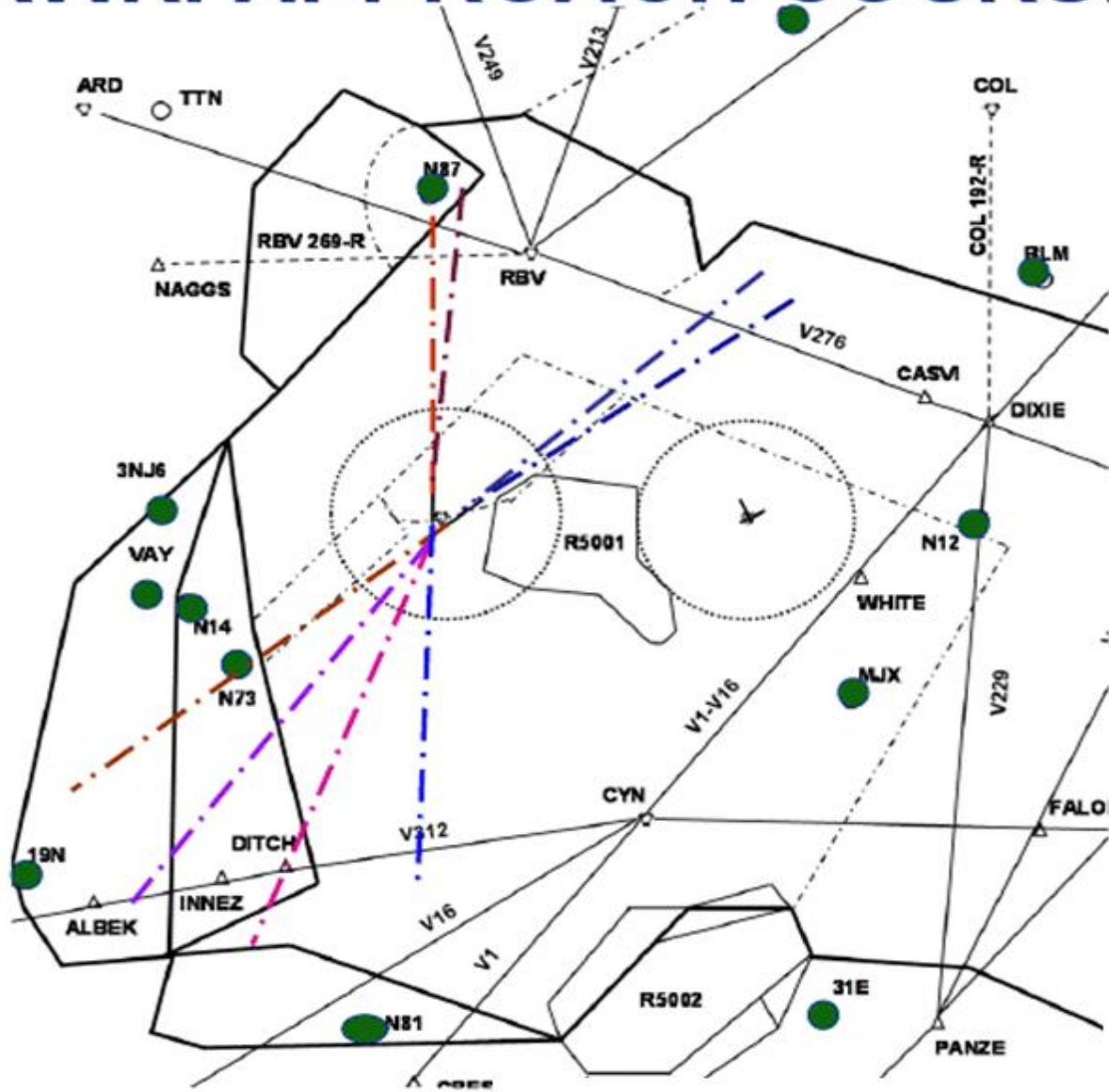








# KWRI APPROACH COURSES



*America's Only Tri-Service Joint Base!*

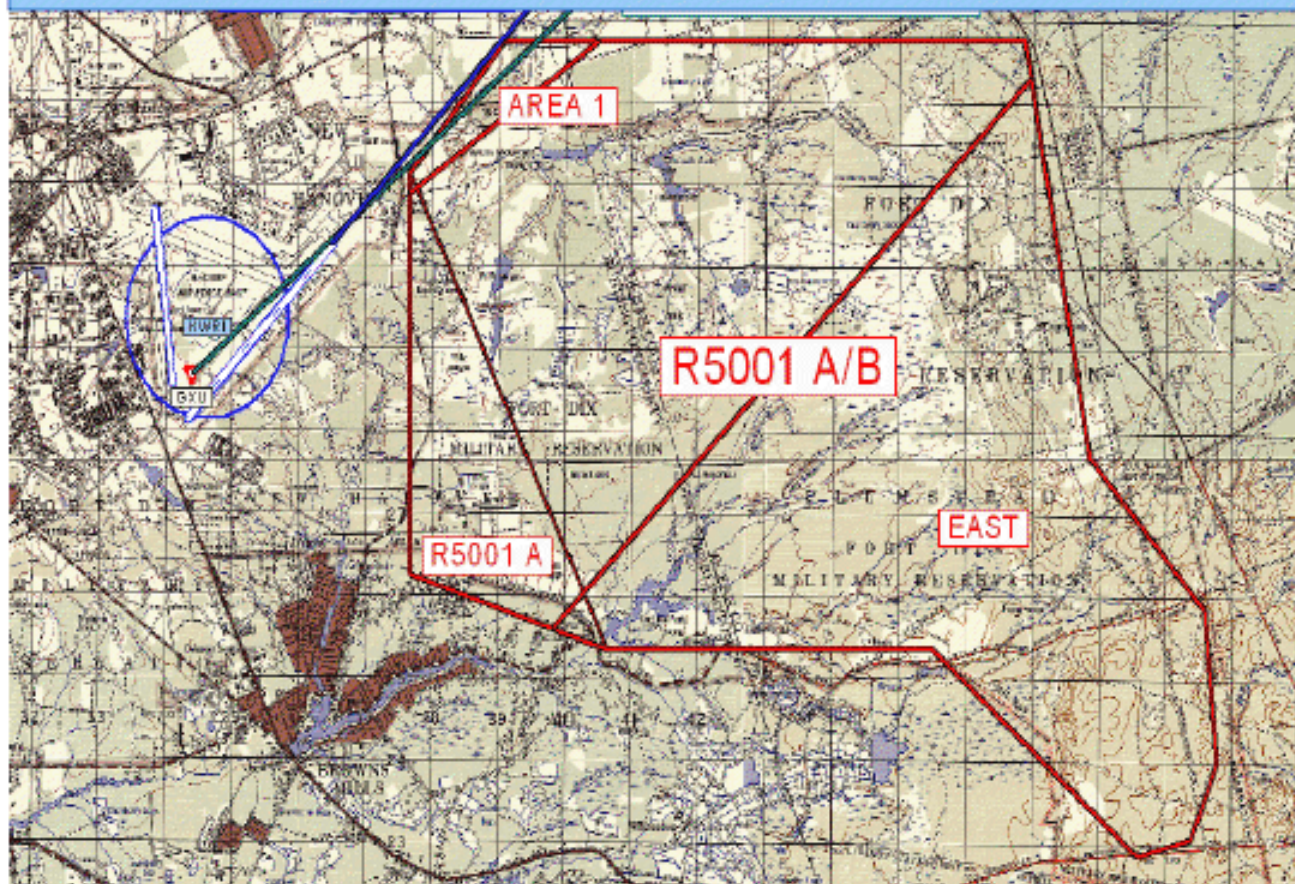




# Restricted Area, R-5001



R5001 Active: 500', 1000, 2000, **4000' (Std)**, 8000'



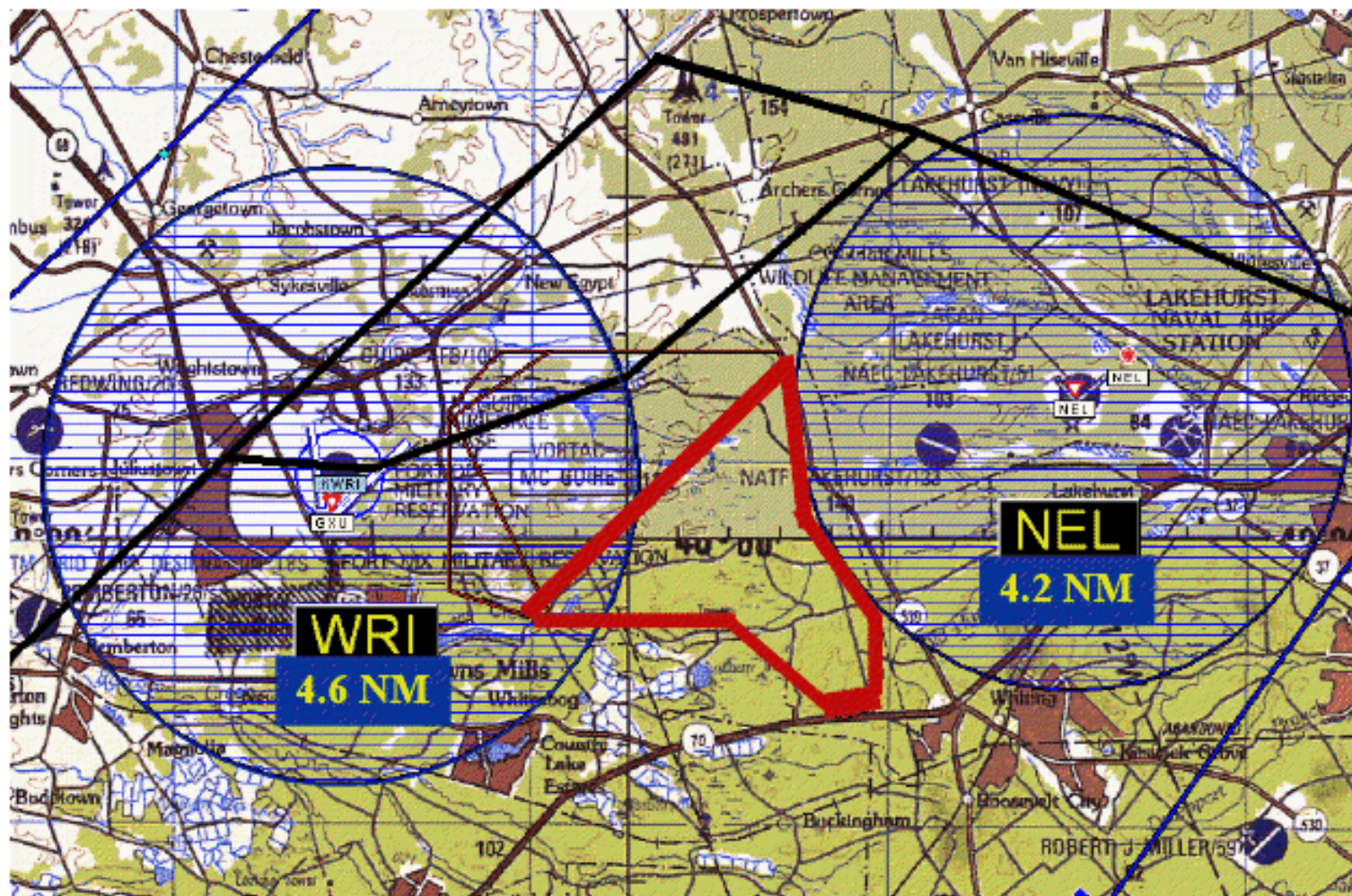
**When active with *Aerial Gunnery* expect restrictions**

R5001 Status broadcast on ATIS 110.6





# JB MDL







# Restricted Area, R-5002

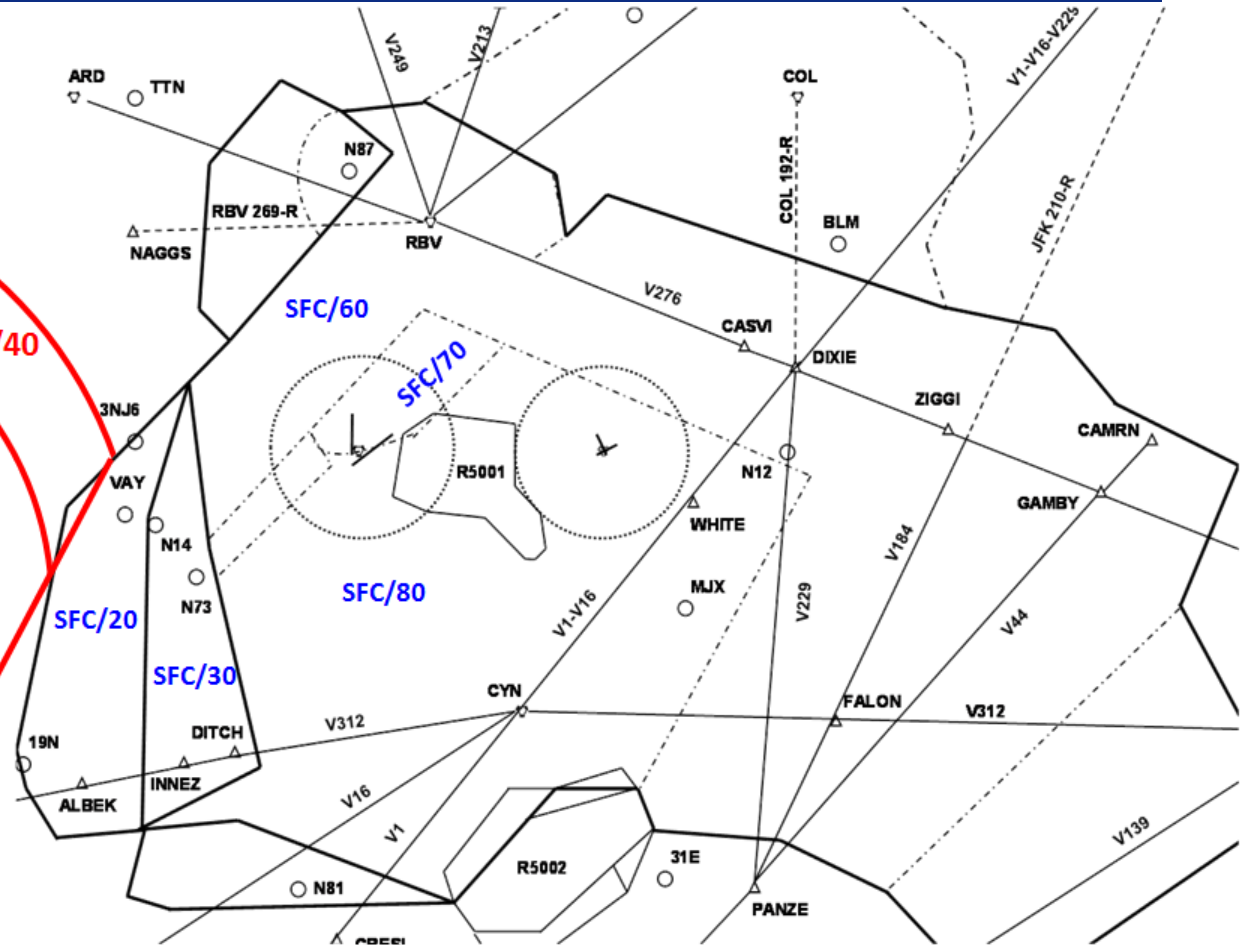
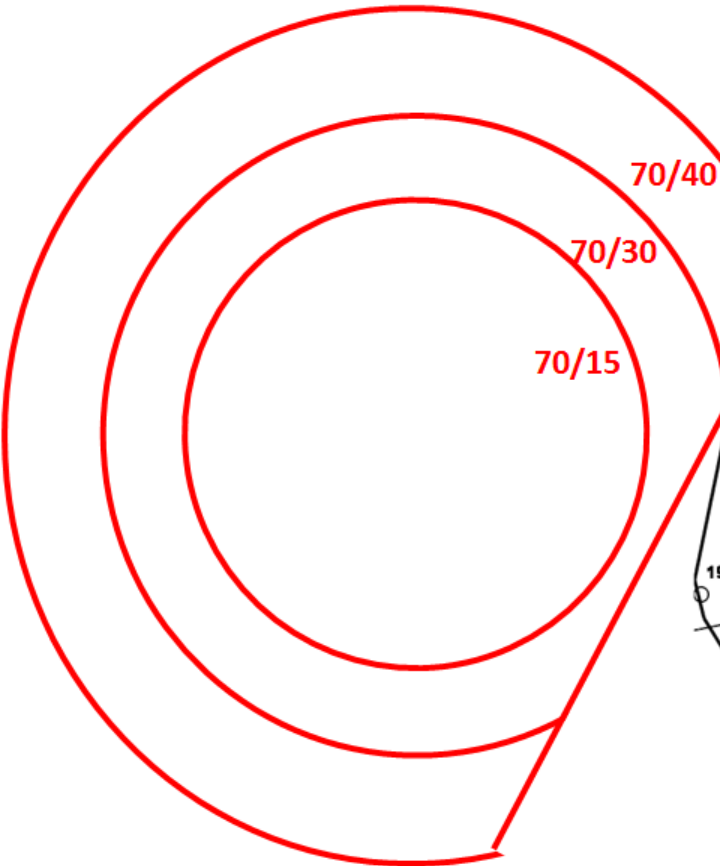


- A: SFC-14000
- B: 1000-14000
- C: SFC-3000
- D: SFC-4000
- E: 3500-14000



# PHL Class B configuration

Current Airspace Configuration

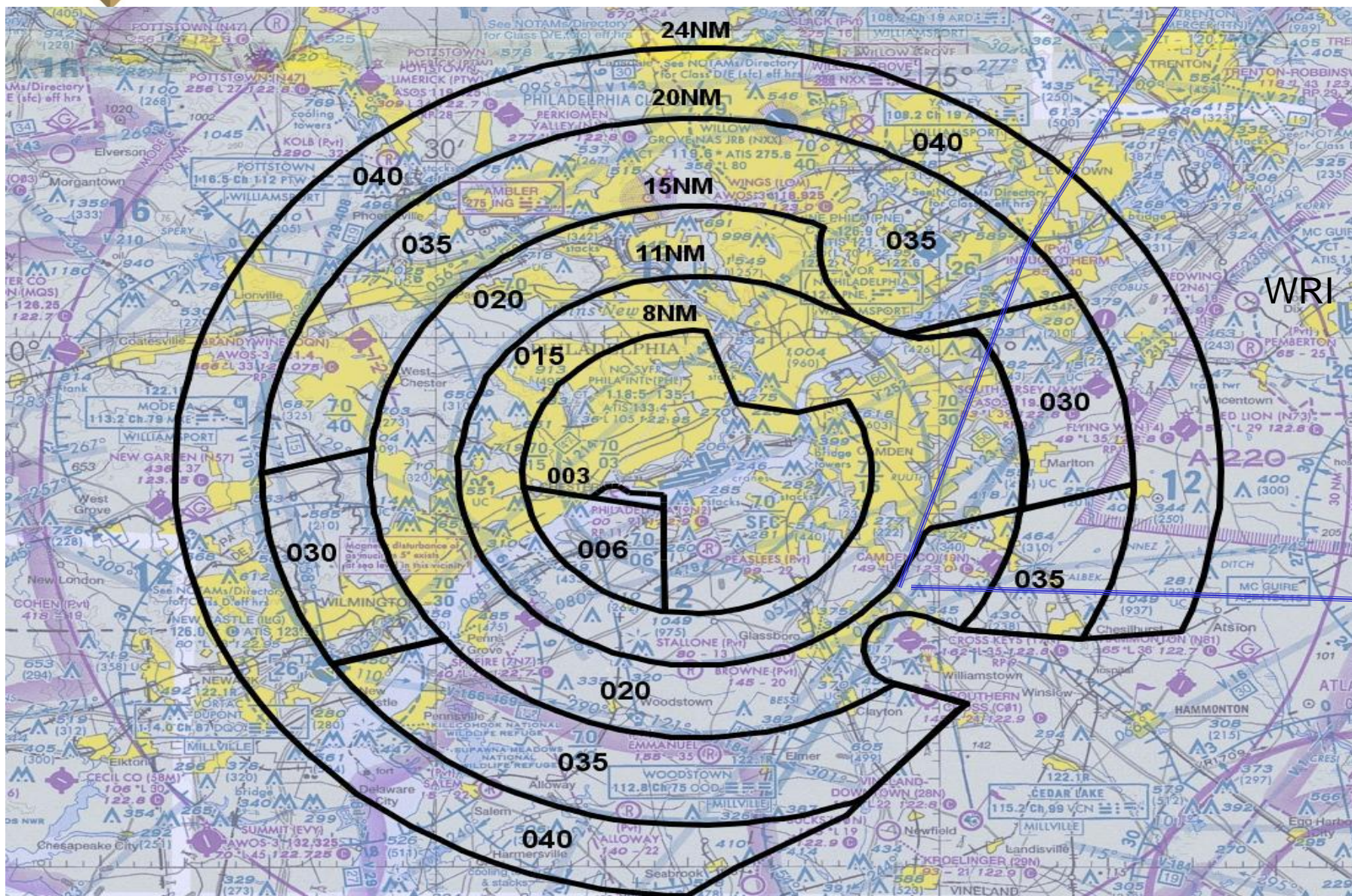


*America's Only Tri-Service Joint Base!*





# Proposed PHL Class B.....







# BRAC Relocations from Willow Grove and Johnstown, PA

- 28 Army/Navy/Marine Aircraft to JB MDL



*America's Only Tri-Service Joint Base!*





# BRAC Relocations from Willow Grove and Johnstown, PA

---

- ❑ **28 Army/Navy/Marine Aircraft to JB MDL**
  - ❑ **Army = 4 C-12's (BE-20's)**
  - ❑ **Navy = 4 C-9's, 3 C-130's & 1 C-12**
  - ❑ **Marines = 6 CH-53's, 6 AH-1's & 4 UH-60's**
- ❑ **NJARNG Helo's (UH-60's) on NEL**





# JOINT BASE MCGUIRE-DIX- LAKEHURST JBMDL



# QUESTIONS???

*America's Only Tri-Service Joint Base!*