



ROCHESTER,  
N.Y.

1792

**Rochester Public Library  
Reference Book  
Not For Circulation**

~~Local History~~ Division  
Rochester Public Library  
115 South Avenue  
Rochester, New York 14604

Rr 4.0294  
 634.0294  
 B8816

55 ✓



1

# BROWN Book of Choice Fruits, Ornamentals, Shrubs, Perennials, Roses and Bulbs.

**W**E TAKE PLEASURE in presenting herewith our **PLATE BOOK** which will be found a most complete work for both salesman and customer. It contains the "Cream" or BEST in Fruits, Ornamentals, Roses, Perennials and Bulbs. In it will be found illustrated many new and rare shrubs as well as those old-fashioned kinds that "grandmother" loved and cultivated and that again deservedly are coming in vogue. Only those Fruits and Ornamentals that succeed generally, are shown, and then only "The Best" are named. Great care has been taken to obtain natural colors and accuracy of formation. Large credit reflects on the Rochester Lithographing Co., Rochester, N. Y.—so widely known as the leading Fruit and Flower plate makers—who designed, engraved and printed this beautiful work. About one year was required for its execution. The edition was so large as to consume over one car load of paper. We would advise patrons to make selections of varieties from those herein. We grow the stock we furnish and all shipments are accompanied by a health certificate, issued by the State of New York, that our stock is *free* from infectious diseases, San Jose scale or other injurious insects. We have over 1200 acres under actual nursery cultivation and 50,000 square feet of glass. We mention this that our agents and customers may know WE ARE GROWERS of what we sell and not mere dealers. Our storage and packing cellars are the most extensive in the country and *we pack all goods entirely under cover*. Visitors are always welcome and as we feel pardonable pride in our collections of rare trees and plants, all interested in their culture are invited to inspect the result of our work.

We are grateful to patrons and agents for generous patronage and effort for the many past years and solicit continuance of the same.

Yours truly,  
**BROWN BROTHERS COMPANY.**

1-1

## Testimonials.

- "I have been fairly and kindly treated by your company." J. N. WHITLOW, Ark.
- "The peach and plum trees, also cherry currants, ordered through Mr. S. B. Nye, have arrived in fine condition, and give perfect satisfaction." ABBIE J. SHERMAN, Ct.
- "The shipment of nursery stock to this place came Monday, the 7th of April, and to-day at noon, it is all delivered. It was the nicest and healthiest stock I ever saw, and was commented on by all who saw it. The trees and shrubs were of good sizes and thrifty, and to say that the customers were delighted is expressing it mildly. I think I can safely say that your trade in this vicinity next year will be double." OLE S. THOMPSON, Ia.
- "I wish to thank you very kindly for those trees you sent me. They are very nice, and I am very proud of them, and if I can persuade any one to take an order of trees from you, I will do so." LUTHER M. JOHNSON, Ill.
- "My trees came all right yesterday, and I must say that I am well pleased with them." C. V. MILES, Ind.
- "Will have no trouble in making full collections, as the customers are well pleased with the stock." J. D. NICHOL, Delivery Agent, Kans.
- "The trees and small fruits you have sent me are way ahead of other firms." S. W. HOWARD, Me.
- "The stock came through nicely. I have bought a great deal of nursery stock, but never received as nice trees as those, or put up in as good shape." CYRUS CLINTON, Md.
- "My trees and plants were received yesterday. They look nice and arrived in fine shape." DR. J. H. WILLIAMS, Mont.
- "Have seen several people who ordered stock for Fall delivery, and they are much pleased. I have several duplicate orders from them already as a result." C. F. COPELAND, Mass.
- "The stock shipped this Spring was the best ever received here." CHAS A. RANKIN, Mich.
- "Three years ago I bought some apple trees from your nursery, and this year they bore fruit. They were the largest apples I ever saw in my life; are a dark red, with light streaks at the base, of uniform size, and measure from six to eight inches in diameter. At the Polk County, Wis. fair, they took all the premiums among a large number of others." RAY. W. SEAVEY, Minn.
- "The purchasers were all well pleased with the trees, and every one paid his bill in full. I hope to do a much larger business than usual this Spring and Summer." DAVID GARDYNE, Mo.
- "I am well pleased with the stock received this Spring." L. O. SPRIGGEL, NEB.
- "I thank you very much for the pains you took in selection and packing of stock." F. D. COLBURN, N. H.
- "Trees came in excellent condition. In fact, I wish to compliment you on the superior manner of packing the goods for shipment." HARRY WEBBER, N. J.
- "Your trees were the best trees ever delivered here." EUGENIO ROMERO, N. Mex.
- "The stock sent by you was duly received, and it is in fine condition. All the stock that has been sent here from your nurseries has given general satisfaction, and I hear nothing but words of commendation, both for the high standard of the goods and, and the care taken in packing and delivering." B. B. G. STONE, N. Y.
- "All the goods were in good condition, and I am well pleased." JOS. POLEY, Ore.
- "The box of nursery stock we are delivering here this Fall is a splendid credit to the nurseries. The bundles were, generally speaking, made up in a neat, business-like manner, and what is still better, the stock has a thrifty, healthy, O. K. appearance, as though it had come from among the Giants of the East. It gave me a feeling of pride to hear a gentleman remark: 'Anybody that sees that stock, and wants to plant trees, cannot help ordering from your nurseries; they are splendid.'" W. A. WEBBERLEY, Ohio.
- "Mr. Malcolm, the Delivery Agent, told us the people were all pleased with the stock delivered this Spring, and Mr. Malcolm spoke about your mode of wrapping in burlap and moss, which we appreciate as well as Mr. Malcolm, as several other companies shipped stock here this Spring, but we did not see as nice fruit trees, and wrapped half as nice." MR. and MRS. C. H. FISHER, Pa.
- "Find enclosed check for amount of bill. Goods unpacked yesterday. Must congratulate you on the Dwarf Duchess Pears. Have been handling stock for twenty years, but never saw finer." T. S. SNOW, R. I.
- "Stock gives good satisfaction." JOHN S. BANDY, Vt.
- "The stock shipped to my Summer home arrived in excellent shape, and was planted at once. It ought to do fine." F. T. MARTIN, W. Va.
- "I have at different times got trees from your nurseries, and always found them to be in good condition." GEO. ABRAHAMSON, Wis.
- "I received the trees O. K., after their long trip across the continent. They came through all right without a scratch on them. Everybody was very much pleased with them." T. A. Ward, Wash.

**Newest and Best Red Winter Apples.**—We Grow Over 175 Different Varieties of Apples.

The apple blossoms' shower of pearl,  
Though blent with rosier hue—  
As beautiful as woman's blush,  
As evanescent, too—*London.*

### Bismarck.

The most remarkable Apple of the age, because :

- 1—Hardy as an oak, and stands severe cold of the North and changes of Western, Southern, and Eastern climates.
- 2—Fruits first year after planting. A two-year tree bore 26 apples the past fall.
- 3—It is a sure, annual heavy cropper.
- 4—Fruit large beautiful red, good quality and keeps well.
- 5—Is of dwarfish habit and makes a great novelty for lawn or garden, being very ornamental



**Bismarck—Youngest Bearer Known.**



**The Century.**  
A Wage Earner.  
Can be purchased  
of us only.

### The Century.

This beautiful red winter apple of best quality is offered by us exclusively for the first time. It is a seedling grown by the late H. G. Pierce, of Atlanta, N. Y. We purchased the original tree in 1899 for \$50 and a liberal royalty on every tree sold. We were induced to make this purchase because of the high compliments given this apple at the meeting of the Western New York Horticultural Society, where it was first displayed. It originated in the bleak hills of Steuben County, where the mercury drops 10° below zero and must, therefore, be very hardy and desirable everywhere. A strong grower, and an early, abundant cropper.

Photo of Century made after March 1, from specimens kept in a warm room.

COOPER'S MARKET.

## Market Apples That Pay Big.



BOIKEN.



YORK IMPERIAL.

**COOPER'S MARKET**—Medium, yellow striped crimson; a great yielder; best quality. Dec. to May.

**BOIKEN**—A large, red cheeked yellow winter sort; an annual heavy cropper; keeps till April or May.

**YORK IMPERIAL OR JOHNSON'S FINE WINTER**—Medium, white shaded with crimson. A fine market sort. November to February.

# These Hardy Apples for Cold Climates. Bear fruit in Either Cold or Warm Latitudes.

"Fragrant blossoms  
fringe the apple houghs."  
—Waldy.



DUCHESS OF OLDENBURG

WEALTHY.

YELLOW TRANSPARENT.

**WEALTHY** — A profitable red winter; medium size and unexcelled quality; very hardy and a great bearer. Season Nov. to Jan.

### DUCHESS OF OLDENBURG

The best red fall; bears when young, and abundantly and when other sorts are a failure; very hardy, and succeeds as well South as North. Season, September.

### YELLOW TRANSPARENT

The best and earliest summer apple; fruit pale yellow, good size and quality; bears very young. Two-year trees in nursery rows producing fruit; very hardy and good cropper. Season August.

Gives fruit from early summer to early winter.

GANO

Splendid Winter Apples.



MANN

ONTARIO

GANO—Large, deep red; an early and heavy bearer. February and March.

MANN—Medium, deep yellow; very hardy, bears well and of good quality. January to April.

ONTARIO—Large, bright red, of aromatic quality; very hardy. January to April.



## Apples that do well Everywhere.



GIDEON.

JONATHAN.

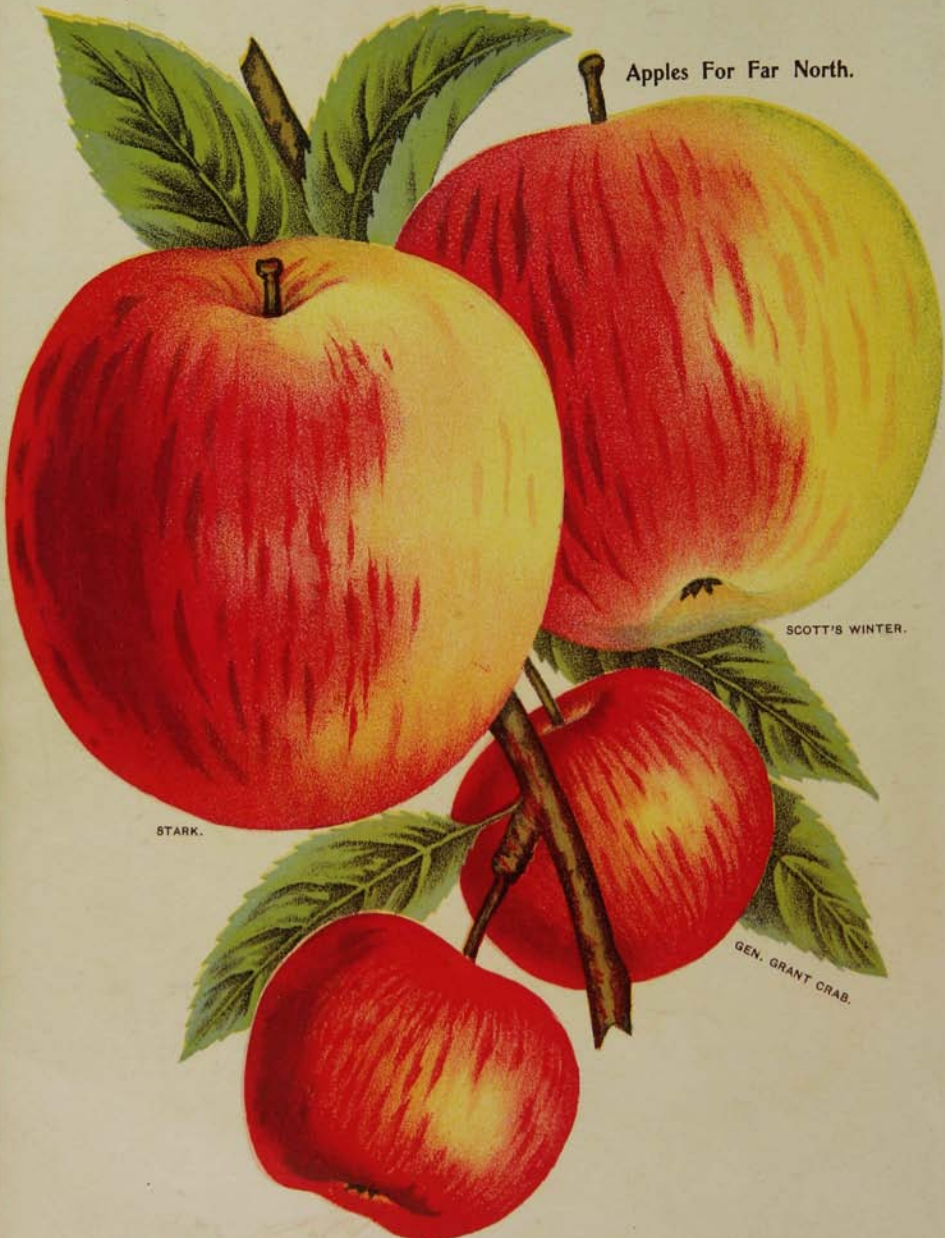
LADY APPLE.

**GIDEON**—Raised in Minnesota. An upright grower; medium to large; color yellow, with vermillion blush on sunny side; mild acid; quality very good. December to March.

**JONATHAN**—Medium, roundish; yellow, nearly covered with red; fine grained, tender, and finely flavored. A very profitable market. Stands long shipment. November to April.

**LADY APPLE**—A beautiful little dessert fruit; flat; pale yellow, with a deep red cheek; juicy, rich and pleasant. Just the sort where only one tree can be planted. November to May.

Apples For Far North.



STARK.

SCOTT'S WINTER.

GEN. GRANT CRAB.

STARK—Large, greenish yellow, shaded red ; keeps long. January to May.  
SCOTT'S WINTER—Medium, deep red, good quality ; a most profitable market sort. Dec. to June.  
GEN. GRANT CRAB—Large, yellow, striped red ; good quality. Oct. and Nov.



We Grow Over 80 Different  
Varieties of Pears.  
3 of Our Best Pears.

**FLEMISH BEAUTY**—Large, greenish-yellow and brown, with large spots of russet; rich and juicy, with a melting and musky flavor; a strong grower and fruitful; hardy; succeeds well in most parts of the country. September and October.

**BEURRE d'ANJOU**—An excellent market sort; large, pyriform, light green, with russet and red cheek; rich melting, and of excellent flavor; fine grower and good keeper; of excellent quality, bears well; keeps until the Winter holidays. October and November.

**BARTLETT**—The popular Pear; large, irregular in form, clear yellow, with a blush on the sunny side; very juicy, buttery and high flavored. A strong grower, bears abundantly and when quite young. Middle to last of September.

*Central Library of Rochester and Monroe Counties  
Rochester, New York*  
**Best Paying Pears.**



**BEURRE CLAIRGEAU.**

**CLAPP'S FAVORITE.**

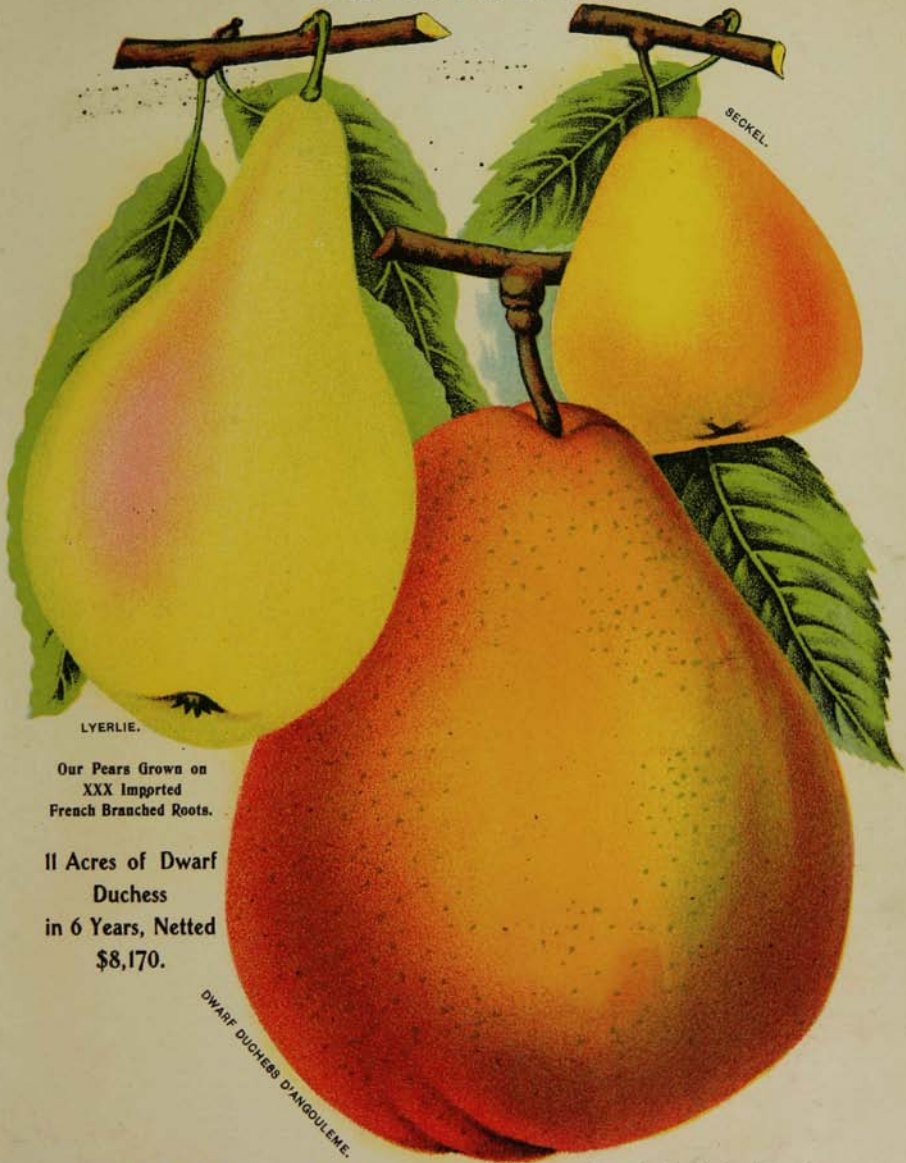
**KIEFFER.**

**BEURRE CLAIRGEAU**—Large, yellow and red; very hardy, very productive; a long keeper. Nov. to Jan.

**CLAPP'S FAVORITE**—One of the best summer pears; large, lemon yellow, of fine quality; earlier than Bartlett. Aug.

**KIEFFER**—The business pear; large, russet yellow; valuable for canning; an early, regular, heavy cropper, commanding best market prices. Oct. and Nov.

### Plant These Pears for Profit.



LYERLIE.

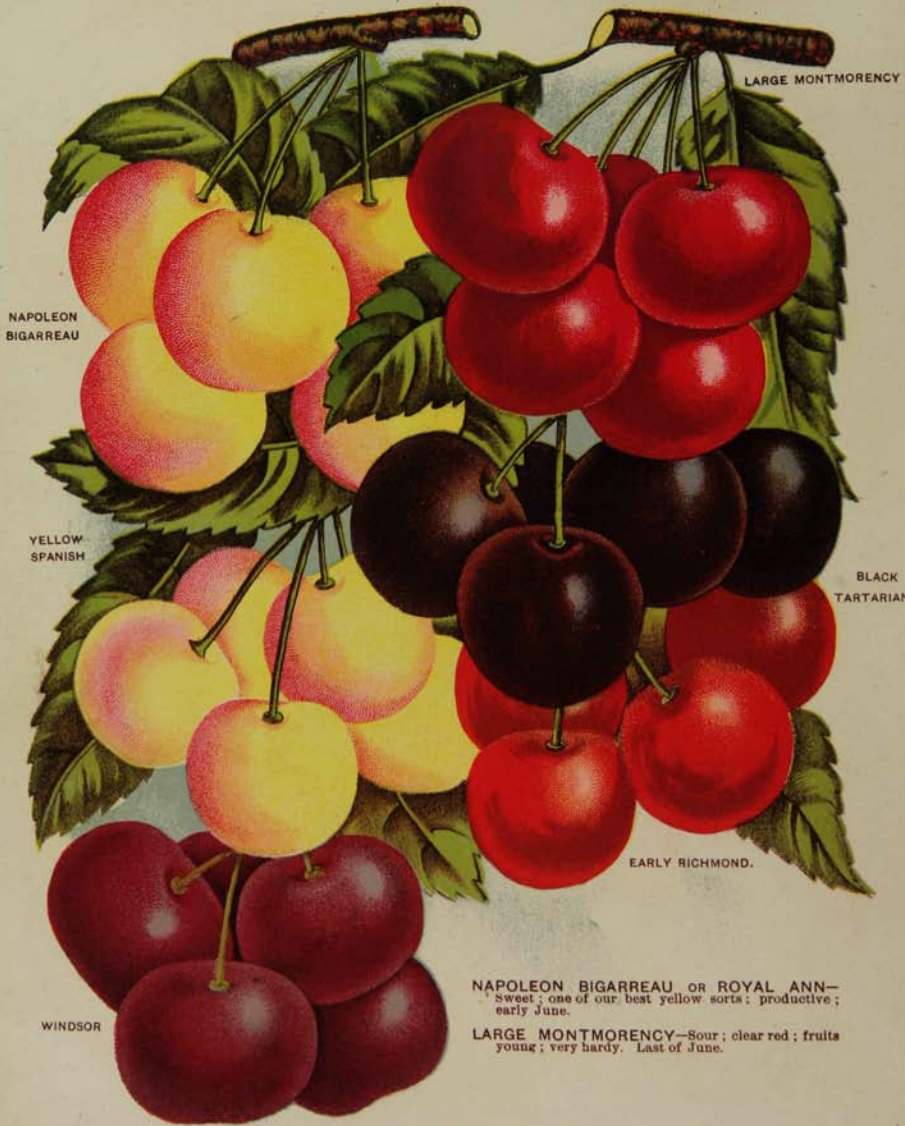
Our Pears Grown on  
XXX Imported  
French Branched Roots.

11 Acres of Dwarf  
Duchess  
in 6 Years, Netted  
\$8,170.

DWARF DUCHESS D'ANGOULEME.

- LYERLIE**—Six weeks earlier than Bartlett; very vigorous and wonderfully productive; fruit medium to large, greenish, with bluish cheek; very spicy and sweet; very near seedless and coreless; a sure annual cropper. Standard only.
- SECKEL**—Small, yellowish-russet, with a red cheek; flesh whitish, buttery, very juicy and melting, with a peculiarly rich, spicy flavor and aroma. A most prolific bearer. September and October.
- DWARF DUCHESS de ANGOULEME**—The largest and one of our best Fall Pears. Most profitable market sort known. A heavy annual cropper.

### Our Best Cherries.



NAPOLEON  
BIGARREAU

LARGE MONTMORENCY

YELLOW  
SPANISH

BLACK  
TARTARIAN

EARLY RICHMOND.

WINDSOR

NAPOLEON BIGARREAU OR ROYAL ANN—  
Sweet; one of our best yellow sorts; productive;  
early June.

LARGE MONTMORENCY—Sour; clear red; fruits  
young; very hardy. Last of June.

YELLOW SPANISH—Sweet; most popular yellow sort; good in every way. July.

BLACK TARTARIAN—Best sweet black sort. Last of June.

EARLY RICHMOND—Most popular sour sort. Can't be beat. June.

WINDSOR—Sweet; fruits early and heavily; very hardy. July.

# We Grow Over 90 Different Varieties of Plums. Best Japan Plums.



**BURBANK** — Of deeper color than Abundance and ripens 10 to 14 days later. Tree more spreading than Abundance.



**WICKSON**—Largest Japan sort; fruits very early. We have seen trees in nursery rows loaded with fruit; maroon red, small stone, fine flavor; ripens between abundance and Burbank and keeps two weeks after ripening.



**RED JUNE** — Vermilion red, of fair size and good quality; very productive; a good market sort. August.



**ABUNDANCE**—Very hardy and productive; fruits early and regularly; fruit large, bright cherry color and of delicious sweetness. First of August.



**OCTOBER PURPLE**—Latest fruiting Japan sort; large, round, purple colored and good quality; very vigorous and productive.

Prof. Bailey, of Cornell, says, their special merits:

1. Great Productiveness.
2. Adaptation to every latitude.
3. Freedom from disease and Curcullo.
4. Earliness in fruiting.
5. Long keeping qualities.

### A Group of Tempting Plums.



**SHROPSHIRE DAMSON**—The kind it pays to grow. The housewife's favorite canner. Larger than common Damson; dark purple. A reliable, abundant bearer. October.



**LOMBARD**—Old-fashioned, but hard to beat in hardiness, quality and productiveness. Large, violet red. Sept.



"With a bee in every bell  
Plum bloom, we greet  
Thee well."—Arnold.

**TATGE**—Our newest and best European Plum; very large, round, dark violet red; fine quality; very hardy, productive and long-lived. Sept.



**MONARCH**—Large, purplish blue, perfect free-stone; very hardy and productive. Oct.

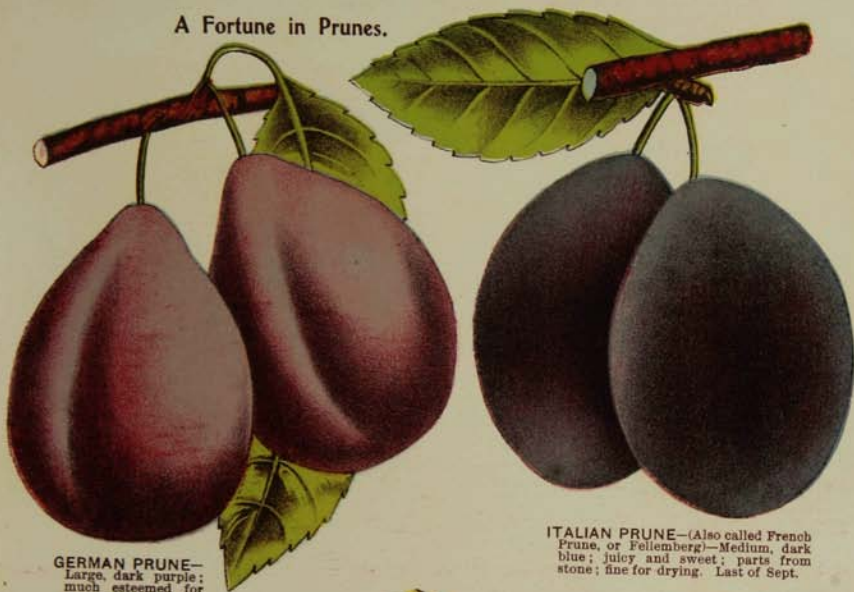


**NIAGARA**—Large, dark blue fruit; good quality and not liable to rot; best market sort; very hardy and a heavy cropper. August.

An Acre of These Nets \$300 to \$400 Yearly.



### A Fortune in Prunes.



**GERMAN PRUNE**—Large, dark purple; much esteemed for drying; a heavy, annual cropper; perfectly hardy. Sept.

**ITALIAN PRUNE**—(Also called French Prune, or Felleberg)—Medium, dark blue; juicy and sweet; parts from stone; fine for drying. Last of Sept.



**HUNGARIAN PRUNE**—(Also called Fonthill or Pond's Seedling)—Large, light red, fine quality; very hardy and a great cropper. Sept.

Prunes  
pay more  
to the  
Acre  
than any  
other fruits.

GOLDEN DROP.



CHAMPION.

EARLY CRAWFORD.

We Grow Over 80  
Different Varieties  
of Peaches.  
Market Peaches that  
Pay Big.

**GOLDEN DROP**—Large, round, and best quality; very hardy and prolific; follows Late Crawford. Freestone.  
**CHAMPION**—Creamy white, with red cheek; sweet and juicy; very hardy; a good bearer; August. Freestone.  
**EARLY CRAWFORD**—One of the best early yellow peaches; very large, yellow, with red cheek; best quality; early September. Freestone.

## A Gold Mine at Home—Our Klondike Peach Collection.

These are the best on the market. Do they pay?  
60c to \$1 per basket should do so.

Our peaches are grown  
from natural seed. Never  
have the "yellows."

ELBERTA

Make annual  
plantings of  
Peaches. It  
Pays . . .

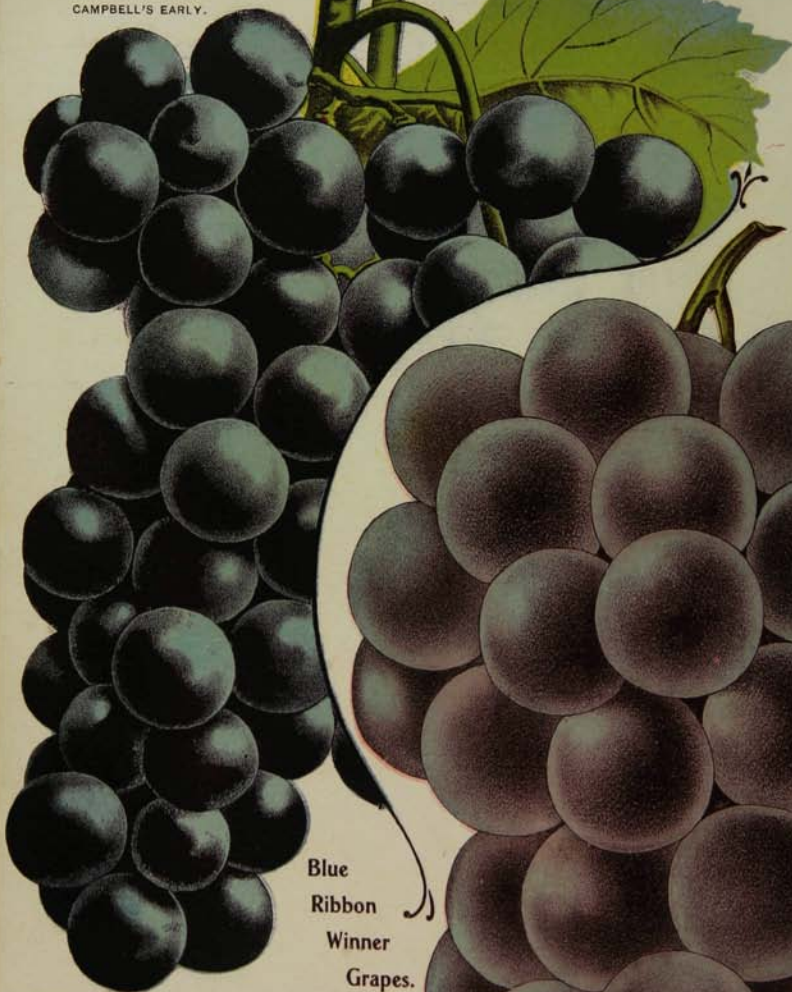
CROSBY

TRIUMPH

The grape may have its bac-  
chanal verse,  
To praise the fig we are free;  
But homage I pay to the queen  
of all,  
The glorious old peach tree.

**ELBERTA**—The best market peach. Resembles the Crawford's, but bears more heavily. Freestone. September.  
**CROSBY**—Large, yellow, delicious and very hardy. Has fruited every year since first season. Late. September.  
**TRIUMPH**—The only known *extra early yellow-fleshed* peach. Ripens before Alexander, but is larger and free-stone. Perfectly hardy, has stood 25 degrees below zero. Blooms late. July

CAMPBELL'S EARLY.



The McPike  
will be  
welcomed by  
all grape  
connoisseurs.

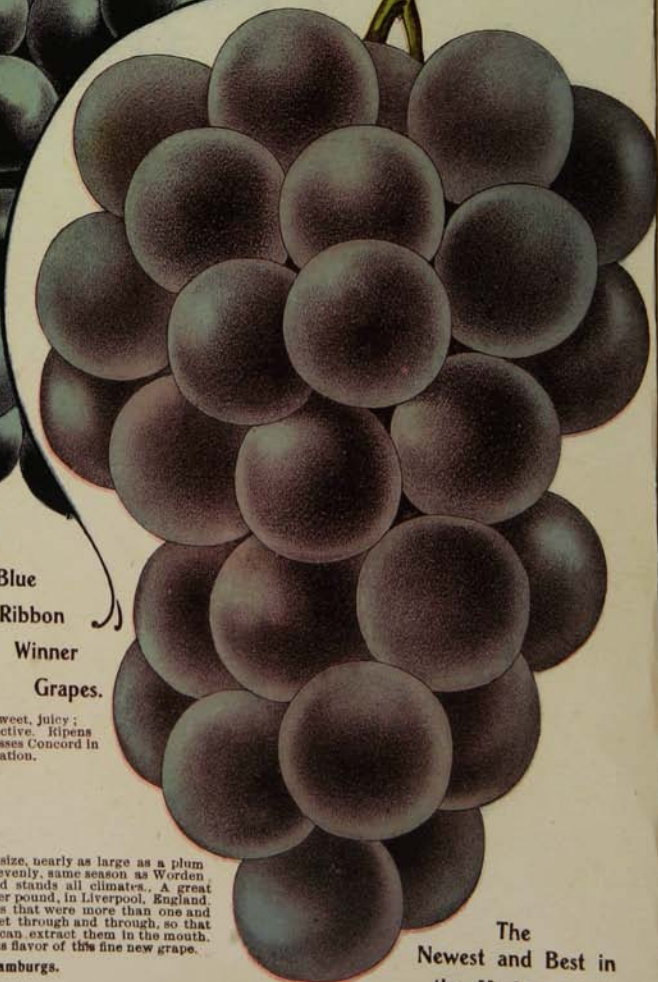
Blue  
Ribbon  
Winner  
Grapes.

**CAMPBELL'S EARLY**—Large, glossy black, sweet, July; very few seeds. Very hardy, early and productive. Ripens with Moore's Early, but keeps longer. Surpasses Concord in quality and earliness. Best for general cultivation.

A practically seedless sort.

**McPIKE**—A wonderful new sort of mammoth size, nearly as large as a plum, quality superior to Black Hamburg. Ripens evenly, same season as Worden, has only one or two seeds. Very hardy and stands all climates. A great shipper. After a 13 day journey, sold at 60c per pound, in Liverpool, England. We have personally measured McPike berries that were more than one and one-half inches in diameter and they are sweet through and through, so that those who prefer not to swallow the seeds can extract them in the mouth. In fact, this is the best way to get the delicious flavor of this fine new grape.

Surpassing the foreign Hamburgs.

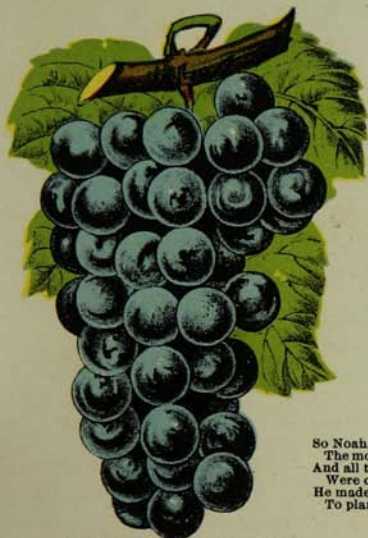


The  
Newest and Best in  
the Market.

McPIKE.

### Grapes for the Millions.

### Our Columbian Quartet.



**MOORE'S EARLY**.—A large dark blue, best quality, prolific and hardy. A profitable market sort because of its extreme earliness

So Noah, when he anchor'd safe on  
The mountain's top, his lofty haven,  
And all the passengers he bore  
Were on the new world set ashore.  
He made it next his chief design  
To plant and propagate a vine.  
—Butler.



**BRIGHTON**.—Of delicious aromatic flavor, thin skin, small seeds, sweet pulp. Hardy and productive. Ripens a week after Delaware.



**NIAGARA**.—The only white grape of commercial value and for family use. Shipping and eating qualities unsurpassed. Most hardy, free from disease and an enormous yielder. Ripens with Concord.



**CONCORD**.—A popular family favorite; hardy; productive; succeeds nearly everywhere. One of the best. September 10th to 15th.

The 4  
for  
\$1.00.

**NO FAMILY**  
should be without these.  
Their  
**LOW PRICE**  
Places them in every  
One's reach.

WILDER.

# Grapes for Everybody.

WORDEN.



GREEN MOUNTAIN.



POCKLINGTON

MOORE'S DIAMOND.



AGAWAM.



SALEM.

**GREEN MOUNTAIN or WINCHELL**—Earliest white sort; good for far North as well as South. Last of August.

**POCKLINGTON**—An old white sort; ripens after Concord.

**MOORE'S DIAMOND**—A splendid white grape. Ripens before Concord.

**AGAWAM**—One of the best red sorts. Ripens early.

**SALEM**—A fine red sort. Ripens with Concord.

We Grow Over 25 Different Varieties of Apricots.

The Fruit of The Gods.

No Fruit Commands a Higher Market Price. A Cross between Peach and Plum.  
Beautiful and Delicious.



An Apricot Orchard is a veritable Gold Mine.

The above, the best for home or market.

ACME.—Large, yellow, red-cheeked, hardy and productive. July.

ST. AMBROISE.—Large, bright yellow, with red blush; very juicy, ripening July 20th, and very productive.

LARGE EARLY MONTGAMET.—Large, deep yellow, with fine blush; juicy and excellent; fruits early, very hardy, July.

Plant More Quinces.

Never Worth Less Than \$2 to \$3 per Bushel.



MEECH'S PROLIFIC—An early, regular heavy cropper October.

CHAMPION—Very large, fine quality, keeps long, bears young; probably our best. Late

REA'S MAMMOTH—An early sort, especially valuable far North. October.

ORANGE OR APPLE—The popular Quince. Very productive October.



## Asparagus and Rhubarb. Two Things it Pays to Grow.

Col. Rochester, after whom the City of Rochester, N. Y., was named, said: "I don't know as I shall eat any fruit from the trees I am planting, but as I eat from trees somebody planted for me, I must set out trees for those who come after me."

### Asparagus Pays \$25 to \$450 Per Acre Clear.



**RHUBARB**—(Myatt's Linnaeus)—Early, tender, mild sub-acid. Largest and best.



**ASPARAGUS**—(Conover's Colossal)—Immense size remarkably tender and high flavored. Cuts one year sooner than other sorts. Most profitable sort. We offer also in Asparagus: Giant, Palmetto, Barr's Mammoth, Columbian White.

Every Garden Should Have These.

Flower City Fruit Collection. 17 Plants for \$2.00.



FRUITS FOR EVERYONE—This is a "Winner."  
WANTED EVERYWHERE—"Nuff said."  
800 DOWNING GOOSEBERRIES PRODUCED  
2,362 QUARTS.

SOLD AT 8 CENTS A QUART.  
DO THEY PAY?





**Flower City Fruit Collection.**  
**17 Plants for \$2.00.**

—All Hardy—

Consists of 1 each of following:

**RASPBERRIES.**

- 1—GAULT—Only everbearing sort, black.
- 2—GOLDEN QUEEN—Queen of yellow sorts.
- 3—CUTHBERT—An early market sort. red.
- 4—GREGG—A profitable blackcap.
- 5—COLUMBIAN—Latest; large, red
- 6—OHIO—Best market black cap.
- 7—MARLBORO—Earliest red.

**BLACKBERRIES.**

- 8—ANCIENT BRITON—A coreless, sweet sort.
- 9—SNYDER—A profitable market sort. Sweet
- 10—ERIE—Best family sort. Large, sweet.
- 11—RATHBUN—Largest, most prolific and seedless.

**CURRENTS.**

- 12—BLACK CHAMPION—Large, sweet.
- 13—CHERRY—Very productive. Red.
- 14—WHITE GRAPE—Best white. Sweet.
- 15—FAY'S PROLIFIC—Best red.

**GOOSEBERRIES.**

- 16—HOUGHTON—Best family sort. Pale red.
- 17—DOWNING—Most profitable variety. Large, green.



## New Raspberries of Much Merit.



GOLDEN  
QUEEN.

COLUMBIAN.

KANSAS.

CUMBERLAND.

**GOLDEN QUEEN**—Large, beautiful amber color; fine quality, hardy and productive.

**COLUMBIAN**—One of largest red sorts, often 1 inch in diameter; can be grown in tree form; unaffected by drought; propagates from tips; very hardy and very productive, 4 acres produced 4500 quarts, netting \$2800.

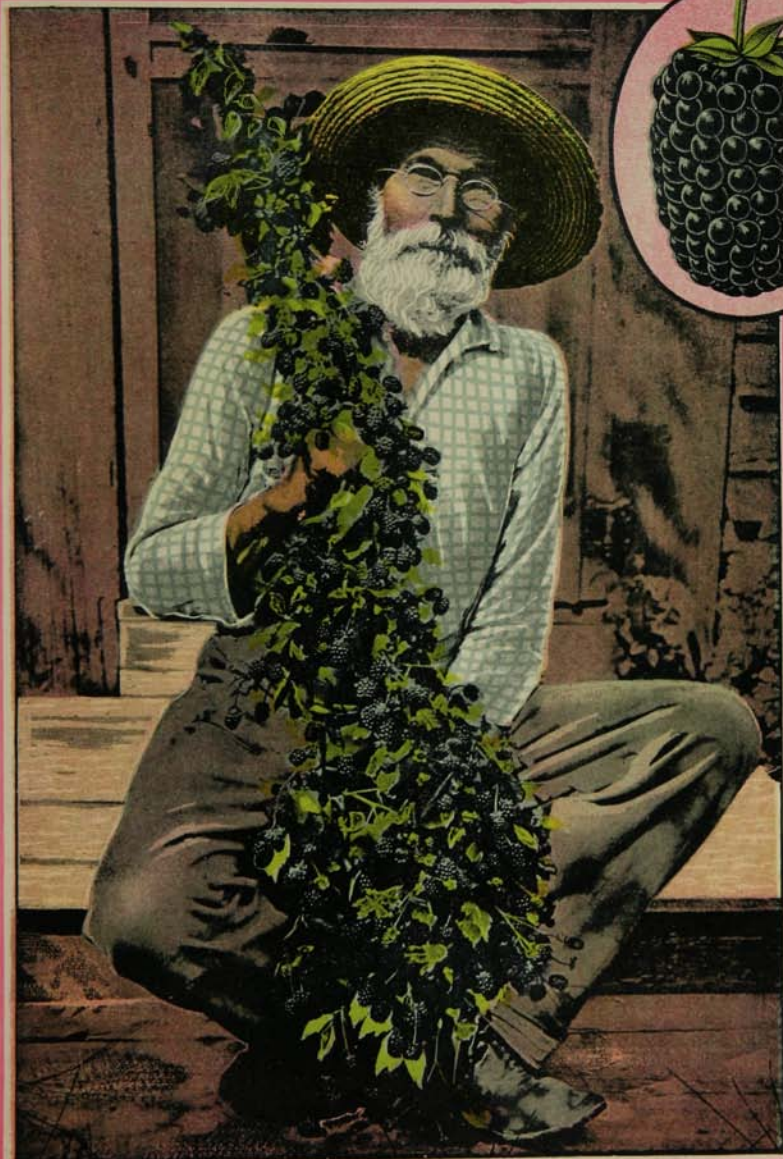
**CUMBERLAND**—A new large black of fine quality, perfect hardiness and a great producer.

**KANSAS**—Large jet black, best quality, very hardy and enormously productive; a fine market sort, ripening just after Palmer.

# Largest and Sweetest of Blackberries—Rathbun Blackberry.

Only 45 Berries to Quart Box. Roots at Tips. Never "Suckers."

20 to 22 Cents a Quart Makes Blackberries Pay.

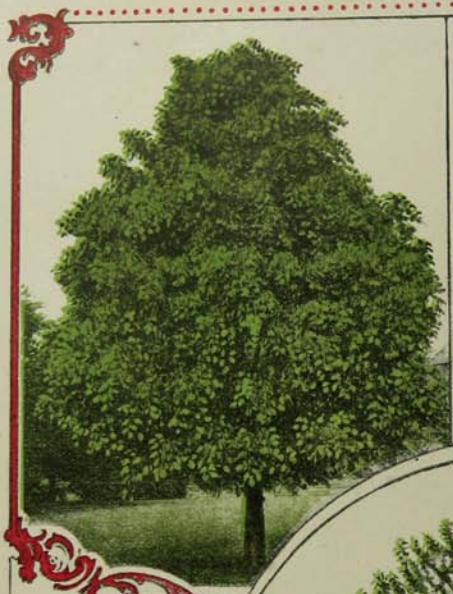


PROF. BAILEY, of Cornell, says RATHBUN is "Midway between a blackberry and dewberry in habit and earliness. There is a tuture for it."

**PLANT**—Vigorous, branching, making plenty of fruiting wood; in hardness, it is very satisfactory, and has stood safely 20 degrees below zero. Propagates from the tips of the shoots; produces fruit in great abundance.

**ROOTS**—Sucker but very little; run deep and branch freely, making the plant strongly drought-resisting.

**BERRIES**—Very large, measuring an inch and an eighth to an inch and a half in length, and one inch to one and an eighth in diameter. Color, intense black, with a high polish; pipe very large, and with small seeds; flesh juicy, high flavored, soft throughout and without any hard core, sweet and delicious. Carry well to market, retaining their form and making a handsome appearance. First quality for table use in a fresh state, or for canning, and also for cooking purposes. Season, July.



EUROPEAN LINDEN.



Purple Fringe.



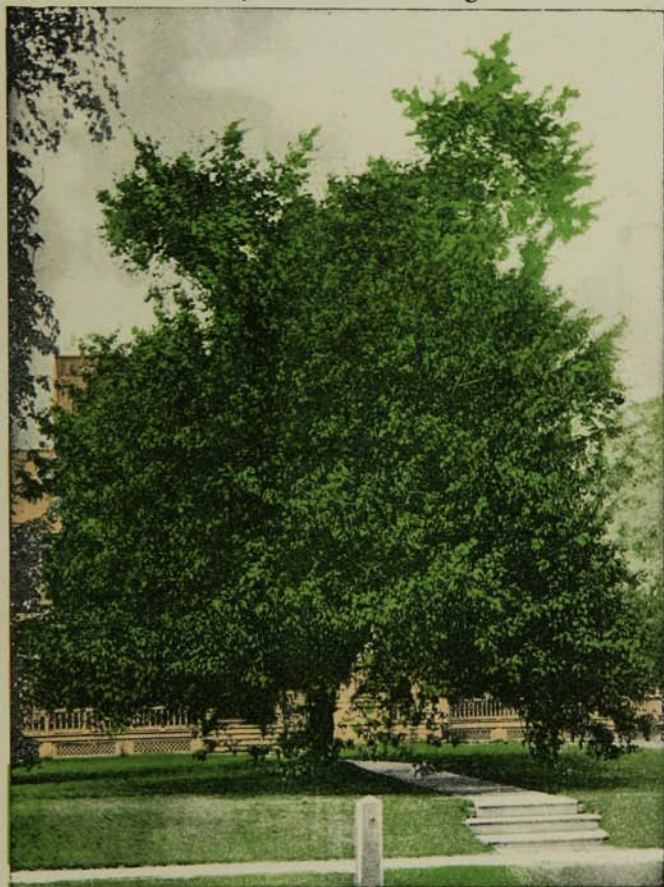
EUROPEAN BIRD CHERRY.

**EUROPEAN LINDEN OR LIME**—A rapid grower, of pyramidal growth, large leaves and fragrant flowers.

**PURPLE FRINGE or SMOKE TREE**—A small tree with round glossy foliage and showy mist-like clusters of seed vessels.

**EUROPEAN BIRD CHERRY**—A small handsome tree, covered in May with long spikes of white, fragrant flowers, followed by black berries.

## A Maple with Ashlike Foliage.



### MANITOBA MAPLE.

(Also called Maple Ashleaf, Negunda and Box Elder.)

One of the handsomest of its class; a very rapid grower and **EXTREMELY HARDY**, succeeding well in very cold and severe climates like Manitoba and Quebec, where most varieties of its class are a total failure. It is perfectly free from diseases and adapted to all soils. Maple like in its seeds and Ash-like in foliage. Its leaves and branches are of a light green color, thus rendering it quite conspicuous. Beautiful for street, park or large private grounds.



LABURNUM



Weir's Maple.



ENGLISH FILBERT.



CAMPERDOWN ELM.

CAMPERDOWN ELM—One of finest weeping lawn trees, with broad foliage and branches weeping to the ground. Often trained into immense umbrella-like arbor.

LABURNUM or GOLDEN CHAIN—A charming, hardy, small-sized lawn tree, having showy spikes of golden flowers in Spring.

WEIR'S CUT-LEAVED MAPLE—An elegant lawn tree of rapid growth, with pendulous branches and deeply cut foliage.

ENGLISH FILBERT—Of easiest culture, growing 6 to 8 feet high and one of most profitable nuts to grow.



## Best Tree For City Street Planting.

Resists Gas or Insects.

Very Rapid Grower.



ORIENTAL PLANE—(*Platanus orientalis*.)

The best tree for city street planting in our list. Mr. John C. Lewis, City Forester, of Philadelphia, Pa., says : The Oriental Plane for street planting is not only the best tree, but in many instances the only tree that will live and thrive. I have it growing luxuriantly on streets where other shade trees have failed. It is a tree that requires little or no pruning; its open growth freely admits light and air, while its luxuriant foliage affords ample shade. These are a few of its advantages as a street tree. On a lawn it makes a noble specimen of a forest giant and admits the grass to grow to perfection under it. In every way the Oriental Plane is a noble and long-lived tree.

It is the only tree that has done well in certain streets in London, where gases have killed other sorts.

## Oaks.

Stately, Long-Lived Trees, Valuable for Street, Park or Lawn Plantings.



1. GOLDEN OAK—Golden-yellow foliage during Summer.
2. SCARLET OAK—Handsome, shining, deeply cut foliage, turning rich scarlet in Fall.
3. PYRAMIDAL OAK—Has an upright habit of growth like Lombardy Poplar.

## The Quickest Shade Maker.

Most Valuable for New Streets and Driveways, Summer Residences, Back Yards, Etc.



**CAROLINA POPLAR.** (*Populus Carolina.*)

Pyramidal in form and robust in growth. Leaves large, glossy serrated, pale to deep green. Very hardy and most rapid growing shade tree known. Especially valuable for new streets, lawns, etc. where quick shade is wanted. Does well in all climates and in poorest of soils. Makes good screens or windbreaks. In fact a general utility tree that stands every soil and all sorts of abuse and neglect. Lives because can't die.

*Central Library of Rochester and Monroe County  
Rochester, New York*

## "Like a Mammoth Rose Bush."

New—Of Great Beauty. Delicate Fragrance. Blossoms Resemble Miniature Roses.



**BECHTEL'S FLOWERING CRAB**—(*Pyrus Angustifolia*)—A medium-sized ornamental tree, worthy of general cultivation. Double flowers, resembling delicate pink roses; very fragrant. Looks like mammoth rose bush when in bloom. Blooms very young. Hardy. Adapted to almost all soils.

Good Shade Trees For Street, Lawn or Park.



American Ash



Catalpa  
Speciosa



AMERICAN ELM.



BEECH-PURPLE LEAF.



NORWAY MAPLE

**NORWAY MAPLE**—One of finest and hardiest of street or lawn trees, especially adapted for sea shore.

**WISCONSIN WEeping WILLOW**—Has remarkably pendulous habit of growth, heightened by the long, thin, twisted foliage. Extra hardy.



WISCONSIN WEeping WILLOW

### Attractive Ornamental Trees.



Sycamore Maple



WILLOW. (Laurel Leaf)—  
Has large, shiny leaves. Valuable at the seashore.



KILMARNOCK WILLOW.—A small lawn tree with umbrella shaped head. Well suited for cemetery lots or small enclosures.



SILVER MAPLE.

SILVER LEAF MAPLE.—  
One of hardiest and fastest growing shade trees. Valuable for street, park, etc.

SYCAMORE MAPLE.—Large tree of vigorous growth with large spreading head. Thrives well even in exposed situations.



MOUNTAIN ASH, EUROPEAN.



TEA'S MULBERRY



RUSSIAN MULBERRY

**MT. ASH, EUROPEAN or ROWAN TREE**—A showy, medium-sized tree, bearing showy, large clusters of deep orange red fruit.

**TEA'S MULBERRY**—Our prettiest hardy, small weeper, growing 6 to 8 feet high. Forms an umbrella-shaped head, with long, slender branches drooping to ground.

**RUSSIAN MULBERRY**—A fine lawn tree with handsome foliage, and valuable for fruit; it bears from July on.





Salisburia



Paul's New Thorn.



ROSE TREE OF CHINA



PRUNUS  
PISSARDII

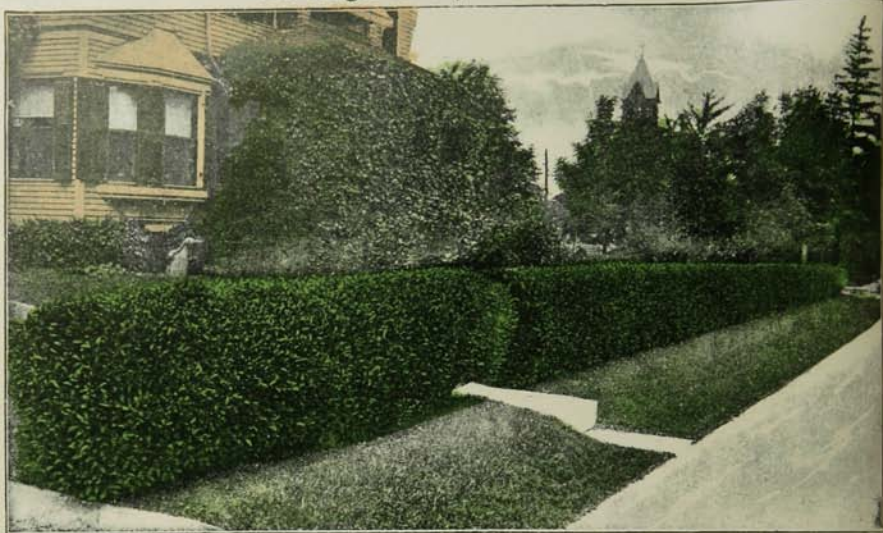
**SALISBURIA**—Ginkgo or Maiden Hair Tree)—A rare Japanese conifer of open headed, upright growth, with fan-like foliage and smooth, gray bark, inclined to shed into hairs.

**PAUL'S NEW THORN**—A valuable lawn tree with showy and scarlet flowers, followed by showy fruits.

**ROSE TREE OF CHINA or DOUBLE FLOWERING PLUM**—Earliest Spring flowering tree. Blooms in May and is literally covered with delicate pink flowers, resembling roses. Entirely hardy.

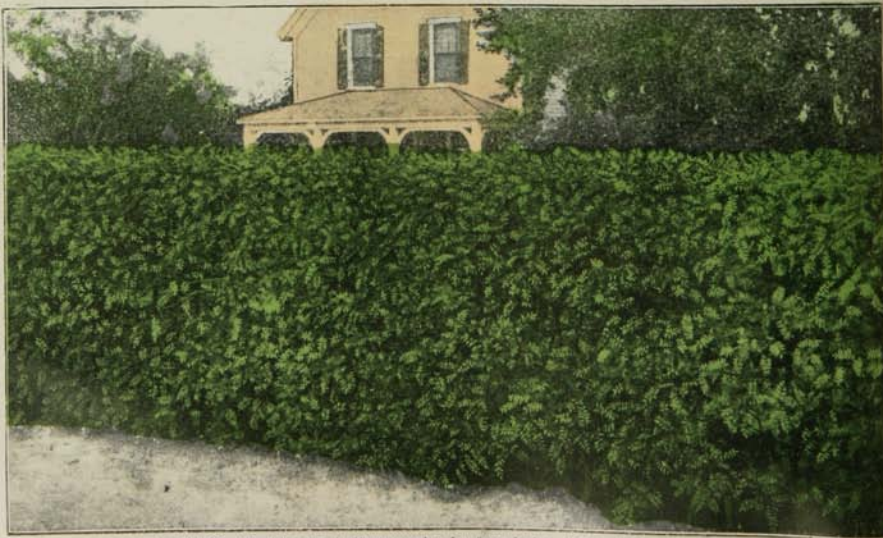
**PRUNUS PISSARDII or PURPLE-LEAVED PLUM**—Foliage deep blood red during entire season, with single white flowers in Spring, followed by fruit.

## Best Hedges for City Lots and Farms.



**CALIFORNIA PRIVET.**—*Ligustrum Japonicum, or ovalifolium.*—A strong grower, entirely hardy, with beautiful, glossy foliage and showy racemes of pure white bloom. Almost an evergreen, retaining foliage until late fall. Valuable as a specimen plant and at the seashore. For ornamental screen or hedge unequalled.

Increase beauty of lawn by planting Privet on division line. 100 feet will cost only \$12.



**HONEY LOCUST.**—(*Gleditschia.*)—Most popular for farm hedge. Perfectly hardy and does well everywhere. A rapid grower, with powerful spines and delicate foliage. Perfectly impunity stands pruning.

## Our Best Evergreens.



NORWAY SPRUCE

HEDGE.



TREE



COLORADO BLUE SPRUCE

**NORWAY SPRUCE—(*Picea excelsa*)**—A favorite because of its hardiness, rich green color, graceful habit and adaptation to all well drained soils. Forms a large sized specimen, branched to the ground. A rapid grower and the best for hedge purposes.

**COLORADO BLUE SPRUCE—(*Picea Pungens*)**—Most attractive of evergreens. Entirely hardy; rich blue foliage; perfect outline; a superb specimen plant. Our stock is grafted from selected specimens and is of brightest tints of blue.



Austrian Pine.



Juniper Savin.



MUGHO PINE.



Arbor Vitae.



Irish Juniper.

ARBOR VITÆ PYRAMIDAL.



EXOCHORDA  
BUSH.

1. **EXOCHORDA GRANDIFLORA** OR PEARL BUSH—A rapid grower with profuse clusters of large pure white starry flowers in May. One of the best and most rare.
2. **ELEAGNUS LONGIPES** OR JAPANESE OLEANDER—A very ornamental shrub with reddish brown bark in winter; foliage, light green above, silver beneath; bright yellow flowers on long stalks in June; deep orange red fruit, both ornamental and palatable. A rare species.

## Newest and Best Lilacs.



1. **FRAU DAMMANN**—Free blooming, with large panicles of snow white single flowers. The purest white.
2. **LÜDWIG SPÆTH**—Long panicles of single dark purplish red flowers. Free blooming. The finest of its color.
3. **PRESIDENT GREVY**—A beautiful blue, individual flowers very double and large, measuring  $\frac{3}{4}$  inch in diameter; magnificent panicles 11 inches long and 5 inches across.

These Surpass in Beauty, Fragrance, Bloom and Hardiness.

## The Rose of Sharon or Althea—(Hibiscus.)



" Why thou wert there, O rival of the rose,  
I never thought to ask, I never knew.—Emerson.

Showy, beautiful flowering shrubs. Flowers large, very brilliant, and of striking colors. Blooms freely in August and September, when few shrubs are in flower. Prevailing colors are rose, white, variegated, blue and purple. Hardy.

One of the Few Hardy BLUE FLOWERING SHRUBS.



2 BUSH FORM.

1. *BIGNONIA GRANDIFLORA*—(*Aristolochia Sipo*, Birthwort or Dutchman's Pipe)—A hardy climber with large, dark green leaves and scarlet trumpet-shaped flowers in August.
2. *XANTHOCERAS SORBIFOLIA*—A beautiful small tree from China, with foliage resembling Mt. Ash and white flowers in terminal clusters in May and June.





1. **HALESIA OR SILVER BELL**—An elegant small tree or large shrub, with broad, light green foliage and pure white flowers in profusion along the entire length of branches as leaves appear in the spring.
2. **CLETHRA ALNIFOLIA (Sweet Pepper Bush or White Alder)**—A dense growing shrub with dark green booted foliage and strong upright spikes of creamy white fragrant flowers during a long season.
3. **ANEMONE OR WIND FLOWER**—Of easiest culture and hardy. Commence to bloom in August and continue until late fall. Best sorts are *Ran*, deep rose with yellow center; *Wurrz*, pure white with yellow center and *Winn-wind*, pure white with golden disc and best for cutting.

## Indispensable Climbers of Incomparable Sweetness.



1. **MONTHLY FRAGRANT**—Flowers red and pale yellow; sweet scented during the Summer.
2. **SCARLET TRUMPET**—One of showiest honeysuckles with long tubular crimson flowers in bunches during the Summer, followed by ornamental scarlet berries.
3. **HALL'S JAPAN or EVERGREEN HONEYSUCKLE**—Excellent for covering trellises, rocks, dry banks, fences, etc., giving dense, almost evergreen foliage. Has very fragrant yellow flowers in constant succession. The best.

Upright or Erect Honeysuckles—Monthly.



UPRIGHT HONEYSUCKLE—BUSH FORM.

1. RED TARTARIAN HONEYSUCKLE—A beautiful shrub with large bright pink flowers in early spring.
2. WHITE TARTARIAN HONEYSUCKLE—Similar to Red Tartarian, with pure white flowers.
3. PINK FLOWERING HONEYSUCKLE—A fine sort with large bright red flowers, striped with white in June.



1. DOGWOOD, VARIEGATED.

2. DOGWOOD, RED FLOWERING (Cornus Florida Rubra.)

3. DOGWOOD, WHITE FLOWERING (Cornus Florida, Native or White.)

4. ALMOND, DOUBLE RED FLOWERING.

5. ALMOND, DOUBLE WHITE FLOWERING.

Splendid Single Lawn Specimen Bushes.



WEIGELIA ROSEA—BUSH FORM

1. WEIGELIA CANDIDA or WHITE—Has handsome light green foliage and showy pure white flowers in profusion throughout the summer and autumn. One of the best.
2. WEIGELIA ROSEA or ROSE FLOWERED—Handsome rose colored flowers in May and June.
3. WEIGELIA, VARIEGATED-LEAVED—Has finely variegated yellowish white foliage, lasting entire season and rose colored flowers; of dwarf habit.



1



GOLDEN SYRINGA BUSH FORM



3



2

1. **BLADDER SENNA.** (*Colutea arborescens*)—A fast growing shrub, thriving in any soil and having pea shaped and yellow brownish red flowers in July, followed by showy inflated reddish seed pods. This is the last shrub seen in ascending Mt. Vesulvus
2. **GOLDEN SYRINGA or MOCK ORANGE.** (*Coronarius foliis aureis*)—A pretty medium sized shrub with golden yellow foliage, lasting entire season.
3. **YUCCA FILIMENTOSA.** (Adam's Needle, Thread and Needle Plant)—Has long narrow dark green foliage with peculiar thread like filaments hanging from edge. Flowers in June on a long spike, 4 to 5 feet high, and bearing a branched panicle of immense size with hundreds of large bell shaped white flowers. Very sub-tropical, good for dry situations and hardy.



A GROUP OF RHODODENDRON MAXIMUM AT NORTH END OF OUR OFFICE.

**RHODODENDRON MAXIMUM.**—This is our native large leaved Rhododendron, and is largely used for planting under trees and in other shady places where a plant with evergreen foliage is desired. There is nothing more beautiful for such purpose.



CLEMATIS ERECTA—PHOTOGRAPHED FROM SPECIMENS ON OUR OFFICE GROUNDS.

**CLEMATIS ERECTA.**—An upright growing Clematis, bearing white star shaped fragrant flowers, similar to those of Clematis Paniculata, from July to September. Valuable in clumps or as a screen for fences, etc. We have been surprised that this grand novelty has not been planted more extensively. We recommend it most highly.

Our Most Beautiful Flowering Climbers.

Unequaled for Covering Cottages, Walls, Etc.



SILVER  
SWEET VINE.



**ACTINIDIA POLYGAMA, or SILVER SWEET VINE**—From Japan; new, hardy, and rapid growing; silvery white foliage at ends of branches; flowers appearing middle of June, are creamy white, with numerous stamens with bright yellow anthers, and resemble Lily of the Valley in fragrance.

**WISTARIA (Chinese Purple)**—An elegant, rapid growing climber; attains immense size, growing 15 to 20 feet in a season. Bears an abundance of long, pendulous clusters of purple flowers in May and June and again in the fall.



## Conspicuous Shrubs of Great Beauty.



GOLDEN GLOW FLOWER



3



2

1. GOLDEN GLOW (RUDBECKIA) or SUMMER CHRYSANTHEMUM—A hardy perennial growing 6 to 8 feet and blooming freely the same season planted. Succeeds in any soil and situation. Bears hundreds of large bright golden flowers, similar to chrysanthemums, valuable for cutting purposes.
2. FORSYTHIA FORTUNEII, or FORTUNE'S GOLDEN BELL—Deep shining green foliage with erect habit and bright yellow pendulous, trumpet-shaped flowers. We also recommend Suspensa, which is a pendulous grower.

3. KERRIA JAPONICA (Globe Flower or Corchorus Japonica)—An erect hardy grower with pale green bark and yellow flowers in profusion from last June until autumn. We offer this with either double or single flowers, and a single flowered kind having variegated silver and green foliage.

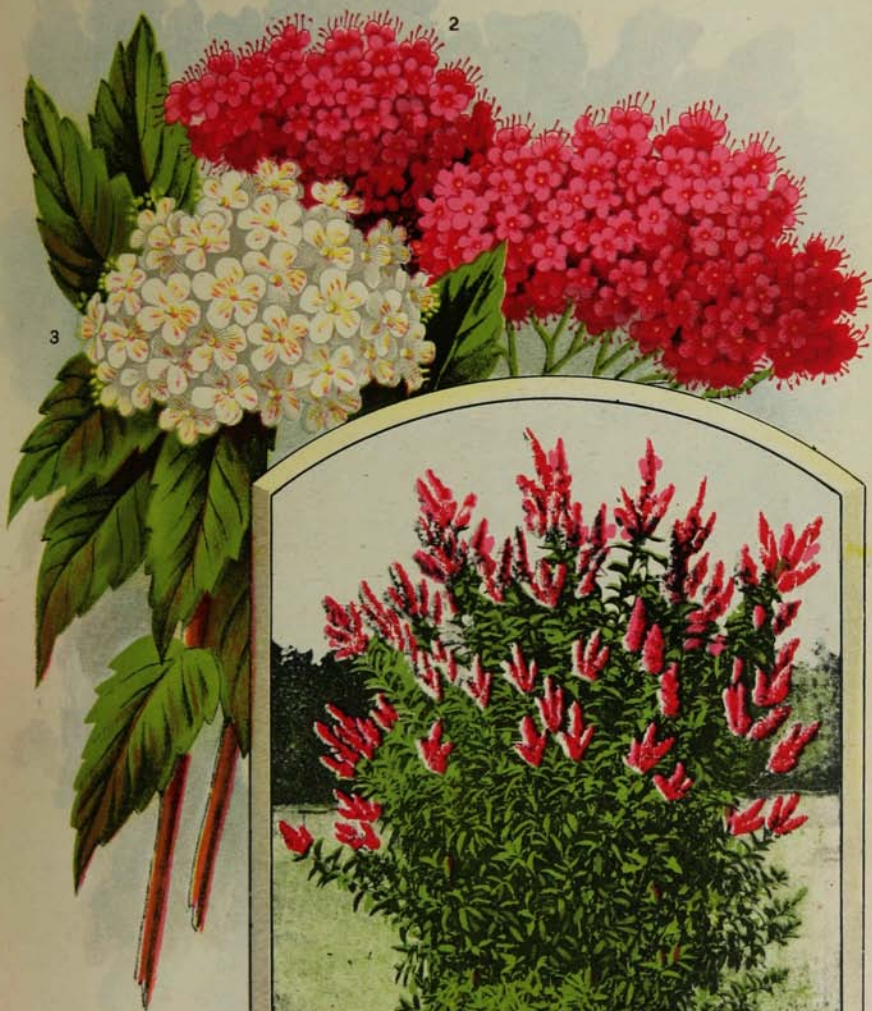
A Page of Spiræas or Meadow Sweets.



SPIRÆA THUNBERGII—BUSH FORM.

1. SPIRÆA PALMATA—Elegant palmate foliage and a succession of showy large heads of deep crimson flowers. Should be in every collection.
2. SPIRÆA GOLDEN or AUREA—Golden yellow tinted foliage and double white flowers in June; very conspicuous.
3. SPIRÆA THUNBERGII—Of dwarf habit and rounded graceful form; branches slender and some what drooping; narrow greenish yellow foliage; small white flowers in May.

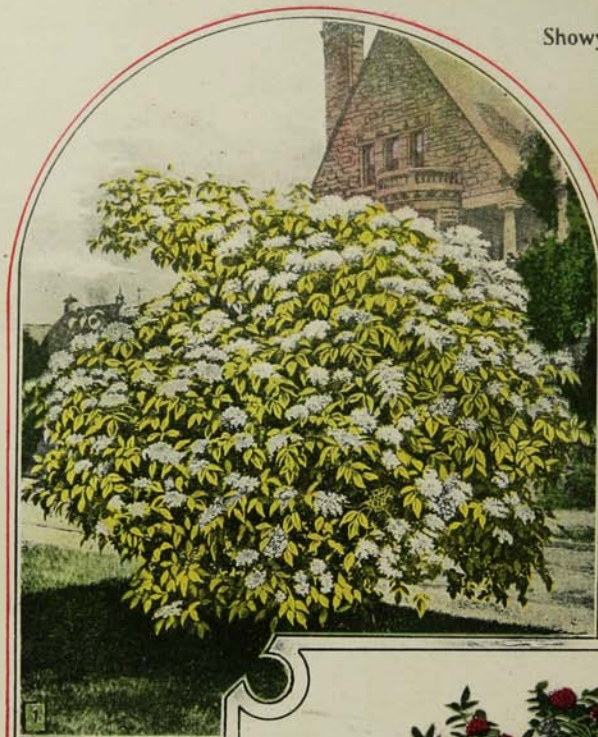
# Rare Spiræas, Worthy a Place Anywhere.



SPIRÆA BILLARDI—BUSH FORM.

1. SPIRÆA BILLARDI—Rose colored flowers in dense spikes in great profusion throughout the summer.
2. SPIRÆA ANTHONY WATERER—A dwarf sort, with dark crimson flowers. Best dark flowered sort.
3. SPIRÆA VAN HOUTTEI—One of the finest. In early June covered with a mass of large white-flowers. Handsome foliage; of pendulous habit; indispensable to any garden.

# Showy Shrubs For Lawns.



- 1. **GOLDEN ELDER**  
(*Sambucus Nigra Aurea*)—A beautiful golden foliaged sort, very useful for foliage effect.
- 2. **ELDER CUT-LEAVED**  
(*Sambucus Nigra Laciniata*)—A hardy showy shrub with deeply cut foliage. Succeeds everywhere.
- 3. **ELDER VARIEGATED LEAVED** (*Sambucus Nigra Variegata*)—Foliage prettily mottled with white and yellow.

4. **HIGH or BUSH CRANBERRY.** (*Viburnum Opulus*)  
Resembles Snowball in wood and foliage, but bears red berries like cranberries until late frosts. Very ornamental

## Most Popular of Flowering Shrubs.

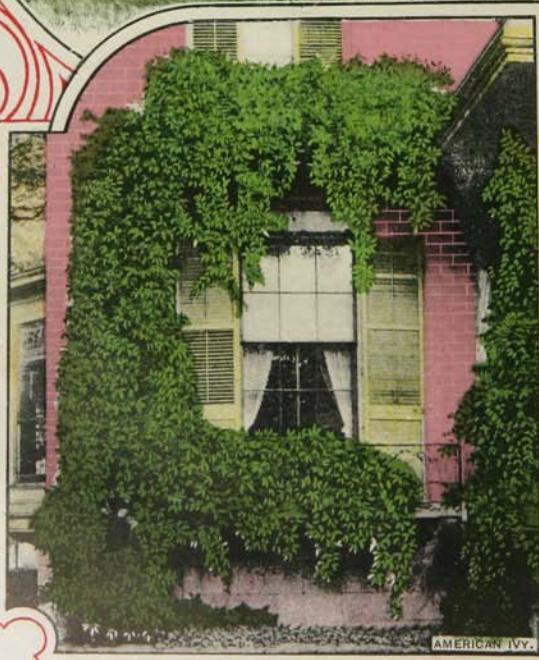


DEUTZIA GRACILIS—BUSH FORM.

1. **DAPHNE CNEORUM** or **GARLAND FLOWER**—A dwarf evergreen shrub bearing profuse rosy lilac flowers from May to October. Fine for rock work.
2. **DEUTZIA LEMOINE**—Of dwarf habit and a profusion of pure white flowers on stout upright branches, last of June. Makes a handsome ornamental hedge.
3. **DEUTZIA PRIDE OF ROCHESTER**—Large double white flowers, tinged with rose; very vigorous; one of the best.
4. **DEUTZIA GRACILIS** or **SLENDER BRANCHED**—A dwarf sort bearing a profusion of white flowers in June; excellent for cemetery lots or small door yards.

Our Best Ivies.

AMPELOPSIS VEITCHII.



AMERICAN IVY.

**AMPELOPSIS VEITCHII**—(Japan or Boston Ivy)—The handsomest, hardiest and most rapid growing Ivy for covering walls, masses of rock, etc. Leaves smaller than American Ivy, three lobed, glossy and overlap one another, forming a dense sheet of green, and in the autumn, in their radiant dress of crimson, are remarkably attractive. Clings to smoothest surface.

**AMERICAN IVY**—(Ampelopsis Quinquefolia, Virginia Creeper or Common Woodbine)—A native climber of vigorous growth with digitate leaves; a fine green in Summer changing to rich crimson in Autumn. It throws out tendrils at the joint, by which it fastens to anything it touches, affords shade quickly and is very desirable for covering walls, verandas or trunks of trees.

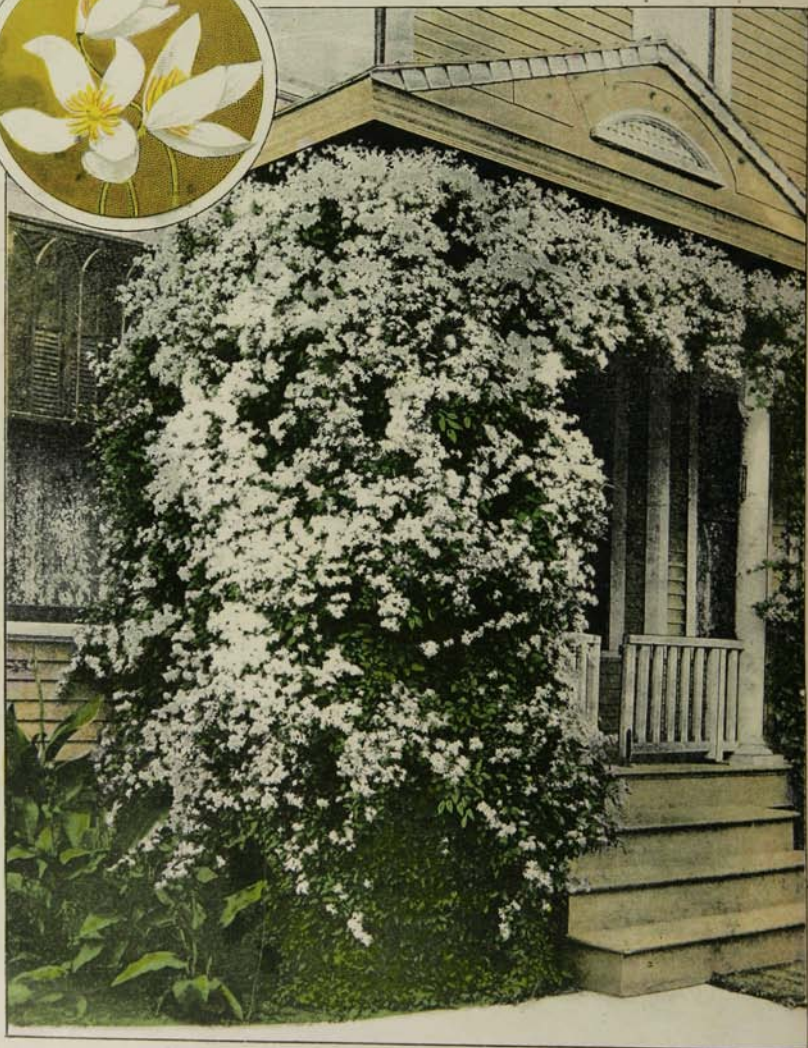
## Berry Bearing Shrubs.



1. SNOWBERRY, RED FRUITED—Low growing spreading graceful habit, with clusters of red berries in fall.
2. SNOWBERRY, WHITE FRUITED—Very ornamental, having white waxy round berries in fall.
3. BERBERRY, PURPLE-LEAVED—Grows 3 to 4 feet high with violet purple leaves and fruit.
4. BERBERRY THUNBERGII—Of dwarf habit; small foliage, changing to red in fall; red berries; makes neat little hedge on boundaries.

## Most Fragrant, Rapid Growing and Hardy Clematis.

Never Troubled by Insects. Blight Proof. Very Rapid Grower. Does well far North. Equally well in the South



**CLEMATIS PANICULATA**—The most hardy and rapid growing Clematis, growing 10 to 20 feet in one season. Foliage broad and healthy, deep clear green. Flowers are pure white,  $\frac{3}{4}$  inch diameter, star shaped and with a pleasing and penetrating fragrance. Valuable for cut flowers, retaining their freshness several days.



## Two of Our Most Ornamental Shrubs.



1. **TREE SNOWBALL** (*Viburnum Opulus*)—This is the old fashioned and very showy Snowball grown in tree form and is one of the best early bloomers. It is very conspicuous and attractive in tree form and far more handsomer than the bush form. This is the first time this grand old favorite has been offered in tree form, and we recommend it as a novelty; worthy a place everywhere.
2. **CALYCANTHUS** (Sweet Scented Shrub, Spice Bush or Carolina Allspice)—Has handsome glossy foliage and deep chocolate colored flowers of fragrance of the pineapple, at intervals throughout the summer and fall.

### Ornamental Grasses.



**EULALIA JAPONICA ZEBRINA, or ZEBRA-LEAVED EULALIA**—Leaves striped crosswise. Stately, luxuriant and attractive. Hardy.



**EULALIA GRACILLIMA UNIVITTATA**—Large clumps of long, narrow leaves, bright green with the mid-rib of a whitish tint. Unique as a specimen.



**ARUNDO DONAX, or THE REED**—Sub-tropical in effect. A reed growing 9 to 15 feet, with very attractive foliage. We offer also variegated Arundo Donax, having leaves striped with white and growing 6 to 8 ft.



**ERIANTHUS RAVENNÆ, or PLUME GRASS**—Tall clumps, with long, silky-whitish or violet panicles. Plume like in Autumn. Very ornamental.

Valuable for planting among belts of Shrubbery, edges of beds, front of porches, etc,

Unequaled for Ornamenting a Porch or Veranda.



1 HENRYII—Best perpetual white, large; blooms freely from June until frost.

2 MADAM ED. ANDRE—Flowers of rich carmine color, 3 to 4 inches across, in great profusion from early June until late Fall.

3 RAMONA—Very large flowers, sky blue; blooms profusely.

4 JACKMANNI—Large, violet-purple flowers. July to October. One of the best.



1. MATRIMONY VINE—A hardy rapid growing climber, bearing red berries from late spring until frost.
2. AKEBIA QUINATA—A fine climber with shiny leaves that remain until late frost and chocolate like flowers in June.
3. HYDRANGEA PANICULATA GRANDIFLORA—An "Ironclad" shrub flowering in September.
4. MAHONIA (Holly-Leaved)—Purplish shiny leaves and bright yellow flowers in May, followed by bluish berries.



1 HYPERICUM MOSERIANUM—(St. John's Wort)—Has long, slender, much-branched drooping stems with golden yellow flowers, 2 to 2½ inches across.

2 CAMPANULA—(Bell Flower)—Flowers on good stems for cutting during June to August. Plants 2 to 3 feet high; colors white, blue, bluish-purple, etc.; also called Canterbury Bells, Blue Bells of Scotland, Chimney Bell Flower, etc.

3 HYACINTHS—The most beautiful, fragrant and popular of bulbous plants either for house or garden culture. Colors dark blue, deep blue, light blue, pure white, rosy white, red, rose and yellow.



ICELAND POPPY.

1. **PLATYCODON** (Balloon Flower or Japanese Bell Flower)—A neat branched upright bush, bearing deep blue flowers in July to October. Excellent for permanent borders.
2. **POPPY** (Oriental)—Very large, bright deep red flowers on short leafy stalks, two to three feet high.
3. **POPPY** (Nudicaule or Iceland)—Bright green fern like foliage, in tufts, with slender stalks 12 inches high, bearing many yellow, white or orange scarlet flowers. Valuable for cut purposes.

### Fine Border Plants.



- 1 **HELIANTHUS** or Hardy Sunflower—Golden yellow flowers from July to October; valuable as cut flowers; grows 5 to 6 feet.
- 2 **FUNKIA**—(Plaintain Lily)—Broad, massive foliage with lily-shaped fragrant flowers; of easy culture.
- 3 **HEMEROCALLIS**—(Yellow Day Lily)—Large fragrant yellow flowers from June to September. Plants grow about 3 feet high.



1. CANTERBURY BELLS (*Campanula Media*)—A hardy perennial of easiest culture with large bell shaped flowers.
2. CENTAUREA (*Hardheads or Knapweed*)—Of neat compact growth, handsomely cut bright green foliage and clusters of large flowers. Choice for cutting.
3. BOLTONIA (*False Chamomile*)—Resemble asters. Bear hundreds of very showy flowers in immense broad heads, in late summer. Of easiest culture.
4. GAILLARDIA—Good bedding plants, being strong, constant bloomers, through the whole summer. Flowers large and showy, two to three inches across.





ENGLISH DAISY.

OSWEGO TEA.

LYSIMACHIA.

We grow every Hardy  
Perennial of Merit.  
A Page of Choice  
Border Plants.

**BELLIS PERENNIS** OR ENGLISH DAISY—An improved form of the Double English Daisy, having large and finely formed flowers. Can supply White or Pink.

**MONARDA DIDYMA** OR OSWEGO TEA—A showy plant, 2 to 3 feet high, with aromatic foliage and bright scarlet flowers in spikes during July and August.

**LYSIMACHIA**—Hardy, 2 feet high, with long, dense recurved spikes of flowers from July to September. Can furnish *Lysimachia Clethroides* (Loose-strife) pure white, and *Lysimachia Nummularia* (Creeping Jenny or Moneywort). The latter is valuable for planting under trees where grass will not grow.

## Hardy Pomponé Chrysanthemums. For Outdoor Culture.

These are  
Becoming Popular  
Again.

As  
Handsome  
as Greenhouse  
Chrysanthemums.



Absolutely hardy and of easy culture. Produce a lavish abundance of blooms and lend a coloration to the garden when other plants have been destroyed by frost. Frost does not affect the flowering, as frequently an armful of flowers can be cut after a sharp frost. We offer

CANARY—Pale yellow.

FRED PEELE—Deep crimson, tipped gold.

GLOBE d'OR—Golden yellow.

MAID OF KENT—Pure white.

MR. SCHMIDT—Yellow tipped, crimson.

MODEL OF PERFECTION—Pure white.

NELLIE RAINSFORD—Buff.

PETTILANTE—Soft creamy sulphur.

ROSINANTE—Blush rose; very dwarf.

TIBER—Crimson tipped, yellow.

VEUVE CLICQUOT—Bright red, edged yellow.

L'AMI COUDERCHET—Fine sulphur white.

DORONICUM



DAHLIAS

**DORONICUM PLANTAGINEUM EXCELSUM, OR LEOPARDS BANE**—A very early Spring flowering perennial, blooming in April and continuing throughout the season—15 to 24 inches high. Bright yellow flowers 2 to 3 inches across.

**DAHLIAS**—The grandest Autumn flowers we have. Nothing is its equal in any respect in September and October. It is in its glory when everything else has faded or is fading, and surrenders only to the Frost King. We have over 500 varieties, combining in a superlative degree purity of color, perfection of form, free and continuous flowering. Order by color.

Hardy, Easy Growing Lilies.

Central Library of Botany and Marine Coasts  
Bangalore, Mysore State, India

Our Gem Collection  
of 5 of Best  
Lilies  
for \$1.00.

Can be Planted either  
Fall or Spring.

This Collection gives  
all colors and  
long bloom.



THE GEM COLLECTION.

CONSISTS OF ONE EACH FOLLOWING:

- 1—BATEMANNII—Orange Apricot.
- 2—ELEGANS ATROPURPUREUM—Dark velvety red.
- 3—SPECIOSUM ALBUM—Pure white.
- 4—SPECIOSUM RUBRUM—White, with rich crimson spots.
- 5—TIGRINUM—(Tiger)—Orange and black spotted.

REMEMBER THE PRICE—\$1.00 for the 5.

## Old Fashioned Flowers, But Unequaled in Beauty.

Remember these in the old home garden.

They Recall Auld Lang Syne.



- 1 LILY OF VALLEY.—Large luxuriant foliage. Fragrant small bell-shaped flowers in pretty racemes.
- 2 BLEEDING HEART (*Dicentra* or *Dicentra*).—Showy, heart-shaped flowers, crimson and silvery white, on racemes one foot or over. Very hardy.
- 3 HARDY VIOLETS.—Of easy culture. We offer Single or Double Blue. Covered with flowers in early spring.
- 4 PERENNIAL CANDYTUFT (*Iberis*).—Profuse blooming evergreen, shrubby plants of dwarf habit well suited for rockeries, stumps, edgings, etc.

### Attractive Border Plants.



1. **PYRETHRUM** (Feverfew)—Plants form broad clumps with handsome fern-like foliage. In flower in June.
2. **SALVIA ARGENTEA** (Meadow Sage)—Large, white wooly foliage and small white flowers, from June to September.

SALVIA, BUSH FORM.

## A Bed of Dazzling Tulips Adorns Any Place.



Nothing More Brilliant or Gratiifying—Flower early and when few other flowers are out.

**A BED OF TULIPS ON OUR HOME GROUNDS**—Most dashing, showy, brilliant and gorgeous of all bulbs. Do well nearly everywhere. For beds unequalled, especially if set as shown herein. For lining walks, or in front of porches, very attractive. We offer early and Late show, single or double and Parrot. Our bulbs are *full sized* and blossom the Spring following their planting. We deliver them either Fall or Spring. If in Spring should be kept in cool cellar until Fall.

## The Flowers of the Rainbow.

More Gorgeous than the Orchid. Easiest Culture. Just the Plant for Damp Locations,



(JAPAN IRIS. *Iris Kaempferi*.)

Most beautiful of summer flowering plants. Form strong tufts of bright green foliage, 3 to 4 feet high, similar to Lilies. Flower from middle of June until five or six weeks later. Flowers 10 to 12 inches across and rival Orchids in their rich coloring and markings. Hardy, of easy culture and do well everywhere, and especially in wet positions.

We have fifty distinct varieties, but the Japanese names are so long and difficult to pronounce that we sell by numbers, from 1 to 50. They come in pure white. White, with yellow center. White, with blue stripes in center and edges of petals. In all shades of blue, purple, lavender and pinkish red. A very good way is to order by color.



## What Mother Loved to Grow. Tall Late Blooming Hardy PHLOX.

Among our finest  
Autumn Flowers.

Surpass old-fashioned  
Dwarf Phlox in  
every way.



Of vigorous habit, easy culture and produce numerous flowers; heads 6 to 9 inches across, from July until October. Our assortment is complete, but we name only our newer novelties:

**COCCINEA**—Flery, deep scarlet.  
**CROSS OF HONOR**—Rose-edged, white.  
**LE SIECLE**—Salmon rose.

**ECLAIREUR**—Carmine.  
**JEANNE D'ARC**—White.  
**NEPTUNE**—Mallow Salmon, pink eye.

Earliest Flowering and Handsomest Pæonia.

Entirely Hardy  
Succeeds  
Everywhere.

Flowers of Exquisite  
Color and Fragrance.



FRINGED-LEAVED PÆONIA.  
(PÆONY OFFICINALIS TENUIFOLIA.)

We offer this Double or Single. The Double has foliage bright lively green, in long thread-like filaments, giving plant appearance of fringe. Double globular crimson flowers. Hardy and rare. The Single has very rich, fern-like foliage and single dark crimson flowers. Flowers before the Double.

AGENTS:—Be careful to note on orders whether Double or Single wanted.

Brilliance of Color, Perfection of Bloom and Statelyness are Characteristics of  
Herbaceous Pæonies.



These are absolutely hardy everywhere, of easiest culture and increase in beauty yearly. They combine statelyness in growth, beauty of color and the delicious fragrance of the Tea Rose. They bloom in June and July. Our collection embraces the choicest kinds, running through the different colors—white, pink, crimson, yellow, etc.



**1 NEW GIANT HARDY PRIMROSE**—A hybrid Primrose, having somewhat the growth of a Polyanthus, combined with the yellow color and fragrance of the English Primrose. Flower is three times as large as any hardy Primrose, being over one inch, and frequently measuring over two inches, with trusses of bloom 6 inches in diameter. It is perfectly hardy, grows from 10 to 12 inches high, and begins to flower earlier and continues in bloom longer than any other plant of the same family known to us.

**2 WORLD FAVORITES—HARDY PINKS**—As handsome and fragrant as green-house carnations. Entirely hardy and of easy culture. Dwarf habit. Bear double flowers of rich colors and rich clove fragrance. For cut purposes, equal carnations. We offer assorted colors.

## Old Garden Favorites. Haven't You Often Wanted These.

A bed of Perennials is always fresh. There's a demand for old fashioned flowers.



**COLUMBINE** (*Aquilegia*).—Blooms late spring and early summer. Grows 2 feet high. We offer in colors, White, red and blue



**ACHILLEA, "THE PEARL,"**—Pure white flowers in greatest profusion the entire summer on strong, erect stems 2 feet high. Valuable for cutting.



**HOLLYHOCKS**—Invaluable for planting in rows or groups in the lawn or interspersing among shrubbery. Flowers form perfect ros-ttes. We have all colors.



**PERENNIAL LARKSPUR** (*Delphinium*).—Showy tall growing plants with magnificent spikes of blue flowers in summer.

## The Most Gorgeous and Beautiful of Hedges.



HEDGE OF CRIMSON RAMBLER ROSES.

THE CRIMSON RAMBLER ROSE is such a strong, rampant rapid grower that it soon makes a most desirable hedge or screen for a fence. The photograph shows this rose trained along a wire fence and planted three to four feet apart. It forms a perfect screen and when in full bloom with its thousands of miniature crimson roses in clusters makes a truly magnificent sight.



**CRIMSON RAMBLER.**

This is the most decided novelty in roses we have had in years. Introduced from Japan in 1893, it has been a source of wonder and admiration wherever exhibited. The plant is a vigorous grower, making shoots from eight to ten feet long in a season. A charming pillar rose; for covering trellises or buildings there is nothing finer. The flowers are grown in great pyramidal panicles each carrying thirty to forty blooms; the individual flowers are one to one and one-half inches in diameter, and remain in perfect condition on the plants for a long time. The color is a bright, vivid crimson, showing none of the purplish tint so commonly seen in crimson roses.

## The Heavenly Rose Twins.

Plant in Pairs for Color Effect, Do Not Separate Them.



**BALTIMORE BELLE.**  
(Pure White.)

**PRAIRIE QUEEN.**  
(Rosy Pink.)

Dark, rough, large foliage. Very rapid growers. Entirely hardy. Flowers late. Unequalled for covering walls, unsightly buildings, etc.



## A Pleasing Combination of Hardy Roses.

PERSIAN YELLOW.

JOHN HOPPER.


GENERAL JACQUEMINOT.

**PERSIAN YELLOW**—Deep, bright yellow; small, but handsome; double; a very early bloomer, and much the finest hardy yellow rose.

**JOHN HOPPER**—Large, brilliant rose colored; very regular and full and very sweet. A long blooming sort.

**GENERAL JACQUEMINOT**—Bright, shining crimson; very rich and velvety; exceedingly brilliant and handsome; makes magnificent buds; one of the best and most desirable for open ground and also for forcing.

Copyrighted by the American Rose Society  
New Hybrid Wichuriana Roses.—Very Hardy and Ornamental.



Of trailing  
habit.  
Fragrant  
double  
Flowers  
in July and  
August.

**We Offer These New Hybrid  
Wichurianas.**

**PINK ROAMER**—Rich, bright pink; single

**TRIUMPH**—White; double.

**GARDENIA**—Creamy white; double.

**JERSEY BEAUTY**—Pale yellow; single.

**UNIVERSAL FAVORITE**—Soft light pink;  
double.

**SOUTH ORANGE PERFECTION**—Blush  
pink, changing to white.

These should be in every Collection.

A New, Hardy, Double Yellow Rose—Soleil d'Or, or Golden Sun Rose.



This new rose is hardy. Flowers are large, full and globular, measuring  $3\frac{1}{4}$  inches across and sweet; buds are conical-shaped; color varying from gold and orange-yellow to reddish-gold, shaded with nasturtium red.

## The Season's Buds. The Charm of Moss Roses is the Bud.

"Rose: thou art the sweetest flower  
That ever drank the amber shower."



MOSS ROSES are among our most valuable decorative plants. Foliage somewhat crimped. In June, fragrant flowers, that in the bud state are invaluable for bouquets and out flowers. Hardy.

*Central Library of Rochester and Monroe County  
Historic Manuscript Collection*

## Tree Roses.



These are top-grafted or budded upon strong-growing, wild stocks at a distance of  $3\frac{1}{2}$  to  $4\frac{1}{2}$  feet from the ground. They thus form tree-shaped plants, nicely headed, and with proper care they are very desirable. We offer them in all colors.

Central Library of Rochester and Monroe Counties  
 Historic Newspapers Collection

## Fruit Bearing Roses.



SPIRÆA LINDLEYII.

RUGOSA ALBA—BUSH FORM

1. **RUGOSA ALBA** or **WHITE RAMANAS ROSE**—Elegant broad shining green foliage, with continuous clusters of showy pure white flowers throughout the summer, followed by orange fruits. Will succeed in almost any situation.
2. **RUGOSA RUBRA** or **RED RAMANAS ROSE**—Of similar habit to *Rugosa Alba*, but bearing brilliant large red showy fruits.
3. **RUBIFOLIA ROSE** or **RED LEAVED ROSE**—A very rare species with deep purple foliage of lasting color and deep red flowers in August, followed by showy crimson fruits which remain until late fall.



MEMORIAL ROSE.

- 1 CABBAGE ROSE—(*Rosa centifolia*)—Rich rose; blooms freely, mainly in June; perfectly hardy, exquisitely fragrant; valuable for hedge purposes or groups.
- 2 MICHIGAN PRAIRIE ROSE—(*Rosa setigera*)—Bears multitudes of large, single, rose-colored fading white flowers in clusters in mid-July; of handsome foliage; excellent as a bush, or for trellises, etc.
- 3 MEMORIAL ROSE—(*Rosa Wichuriana*)—Of prostrate trailing habit, soon forming a dense covering; foliage dark shining green, almost evergreen; flowers single, fragrant, white, followed in Fall with red fruit; valuable for covering low walls, rockeries or graves.

MARGARET DICKSON.

Two Beautiful Roses.



JULES MARGOTTIN.

MARGARET DICKSON—White, with pale flesh center; very fragrant; unequalled in form, hardiness and blooming qualities.

JULES MARGOTTIN—Beautiful red; very free bloomer.



Central Library of Rochester and Monroe County  
Rochester, New York



Lord Penzance's Hybrid Sweetbriers.  
Foliage of rich, spicy fragrance. Very hardy.  
For ornamental hedge invaluable.

We offer the following Sweetbriers:

- MEG MERRILLS—Crimson.
- BRANDWARDEN—Clear Rose.
- AMY ROBSART—Deep Rose.
- JEAN DAWSON—Crimson.
- GREEN MANTEL—Bright Pink.
- EDITH BOLINDER—Pale Rose.

MRS. JOHN LAING.

Gold Medal Collection.

COQUETTE DES ALPES.

PRINCE CAMILLE  
DE ROHAN.

MADAM GEORGE BRUANT.

MRS. JOHN LAING—Delicate pink; blossoms continuously through the Summer; very fragrant.

COQUETTE DES ALPES—White, slightly shaded with carmine; strongest grower of its class.

PRINCE CAMILLE DE ROHAN—Deep velvety crimson. A splendid rose.

MADAM GEORGE BRUANT—Pure white, fragrant; in bud state flowers long and pointed; when open, semi-double; forms a handsome bush.

Three Best Hardy Garden Roses.



1 MADAM GABRIEL LUIZET—Pink, very large, fragrant flowers; a free bloomer.

2 ALFRED COLOMB—Bright carmine crimson; one of best dark roses.

3 MADAM PLANTIER—One of best pure white hardy roses; blooms freely early in season.

CAPRICE.

A Popular Collection.

PAUL NEYRON.

ANNA DE DIESBACH.

MARSHALL P. WILDER.

CAPRICE—Best striped hardy rose; soft, satiny pink, distinctly striped carmine. A decided novelty

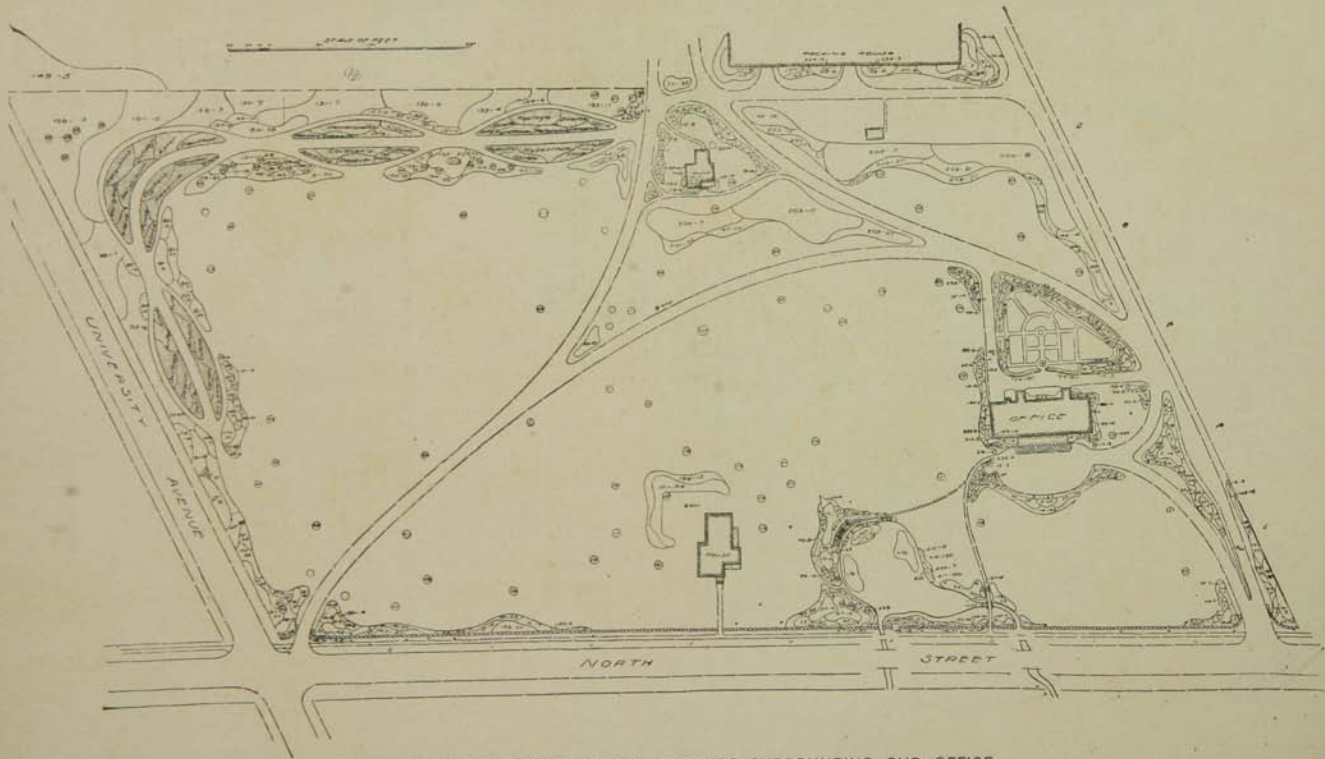
PAUL NEYRON—Deep rose color, free bloomer. One of finest.

ANNA DE DIESBACH or GLORY OF FRANCE—Beautiful carmine, fragrant. A superior garden sort.

MARSHALL P. WILDER—Cherry carmine; free late bloomer. Finest of its color.



EXTERIOR OF OUR OFFICE BUILDING—40X100 FEET.



PLAN OF PARK AND EXPERIMENTAL GROUNDS SURROUNDING OUR OFFICE.  
(See next page for list of stock.)

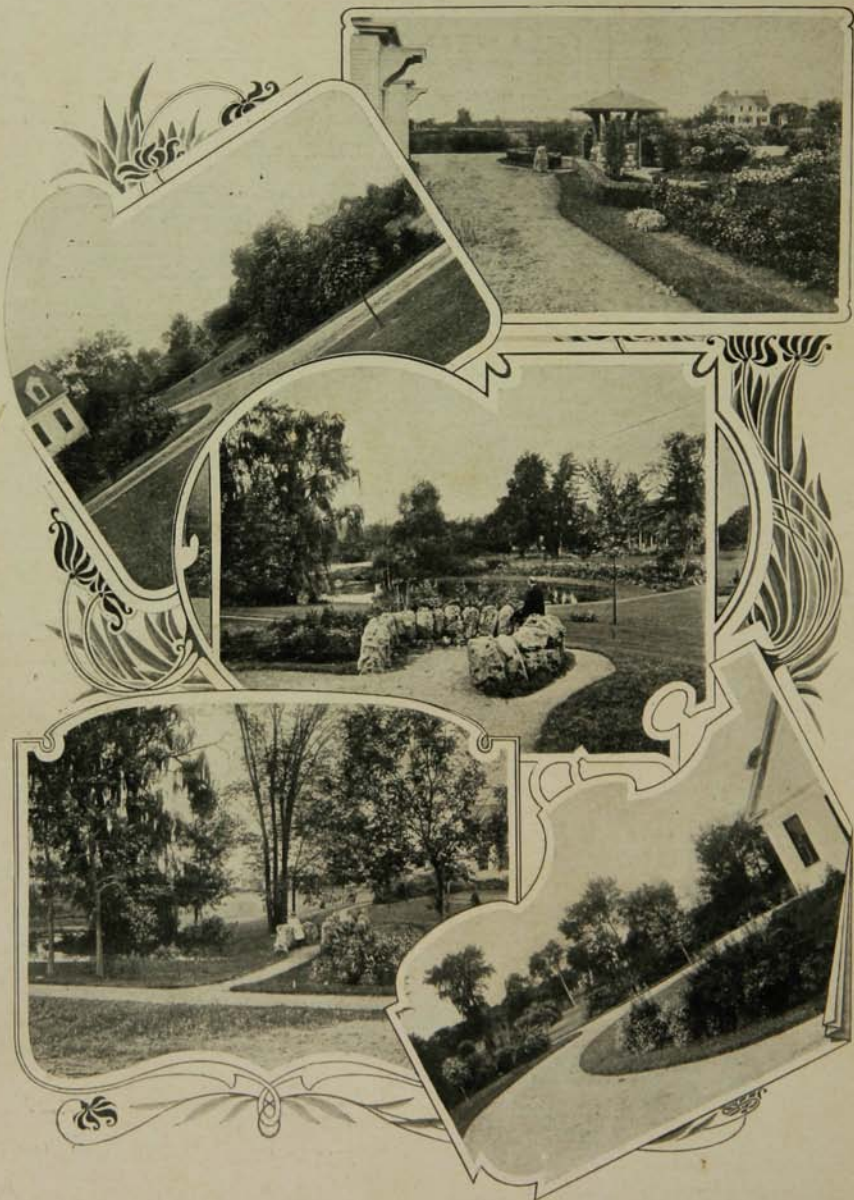
# PLANTING LIST.

1	<i>Ulmus Americana</i>	63	<i>Vinea minor</i> (and <i>Lilium canadense</i> )	121	<i>Salisburia adiantifolia</i>	180	<i>Pinus excelsa</i>
2	<i>Berberis Thunbergii</i>	64	<i>Cydonia Japonica</i>	122	<i>Klesgnus in var</i>	181	<i>Taxodium distichum</i>
3	<i>Berberis</i>	65	<i>Forsythia suspensa</i>	123	<i>Hydrangea paniculata</i>	182	<i>Ulmus montana superba</i>
4	<i>Rosa multiflora</i>	66	<i>Pinus Mabo</i>	124	and others	183	<i>Rhus Osbeckii</i>
5	<i>Rhus typhina</i>	67	<i>Betula nigra</i>	125	<i>Symphoricarpos in var</i>	184	<i>Tilia europaea</i>
6	<i>Viburnum tomentosum</i>	68	<i>Amorpha in var</i>	126	<i>Lonicera in var</i>	185	<i>Cerasus in var.</i>
7	<i>Forsythia Fortunei</i>	69	<i>Populus fastigiata</i>	127	<i>Alnus in var</i>	186	<i>Plantanus orientalis</i>
8	<i>Kerria Japonica</i>	70	<i>Liriodendron tulipifera</i>	128	<i>Ptelea trifoliata</i>	187	<i>Juniperus sabina pro-</i>
9	" " <i>d. pl.</i>	71	<i>Viburnum acerifolium</i>	129	<i>Eonymus atropurpureus</i>	188	cumbens
10	<i>Rhodotyus kerrioides</i>	72	" <i>plicatum</i>	130	<i>Fragaria in var</i>	188	<i>Cratogeomys crus-galli</i>
11	<i>Althea in var</i>	73	<i>Clethra in var</i>	131	<i>Quercus in var</i>	190	<i>Prunus in var.</i>
12	<i>Spiraea Van. Honneltii</i>	74	<i>Deutzia Fride of Roch's tr</i>	132	<i>Forsythia in var</i>	191	<i>Persica in var.</i>
13	<i>Lonicera fragrantissima</i>	75	" <i>graecilis</i>	133	<i>Calycanthus in var</i>	192	<i>Betula in var.</i>
14	" <i>Halleana</i>	76	<i>Crataegus oxyacantha fl. pl.</i>	134	<i>Cydonia in var</i>	193	<i>Fagus in var.</i>
15	<i>Yucca filamentosa</i>	77	<i>Hibiscus syriacus totus albus</i>	135	<i>Philadelphus in var</i>	194	<i>Pyrus malus in var.</i>
16	<i>Viburnum cassinoides</i>	78	<i>Lonicera tartarica alba</i>	136	<i>Tamarix, Africa</i>	195	<i>Magnolia in var.</i>
17	<i>Cornus sanguinea</i>	79	<i>Philadelphus grandiflorus</i>	137	<i>Pinus strobus</i>	196	<i>Tamarix in var.</i>
18	<i>Viburnum Opulus</i>	80	<i>Lilacs in var</i>	138	<i>Spiraea colosa</i>	197	<i>Syringa persica rubra</i>
19	<i>Hypericum moserianum</i>	81	<i>Cercis Canadensis</i>	139	" <i>alba</i>	198	" <i>alba</i>
20	<i>Corylus in var</i>	82	<i>Hydrangea in var</i>	140	<i>Carpinus Americana</i>	199	<i>Salix in var.</i>
21	<i>Cornus florida</i>	83	<i>Sambucus in var</i>	141	<i>Celastrus scandens</i>	200	<i>Pinus in var.</i>
22	<i>Daphne in var</i>	84	<i>Viburnum Lentago</i>	142	<i>Philadelphus coronarius</i>	201	<i>Twart Pines</i>
23	<i>Rosa in var</i>	85	" <i>dentatum</i>	143	<i>Trillium grandiflorum</i>	202	<i>Silver Fir in var.</i>
24	<i>Ligustrum ovalifolium</i>	86	<i>Rubus in var</i>	144	<i>Diervilla in var</i>	203	<i>Thuya in var.</i>
25	<i>Rosa setigera</i>	87	<i>Spiraea opulifolia</i>	145	<i>Deutzia in var</i>	204	<i>Birinospora in var.</i>
26	<i>Ribes alba</i>	88	<i>Stephanandra flexuosa.</i>	146	<i>Spiraea in var</i>	205	<i>Spruce in var.</i>
27	" <i>rufoea alba</i>	89	<i>Chionanthus virginica</i>	147	<i>Chionanthus occidentalis</i>	206	<i>Juniper in var.</i>
28	<i>Rhus aromatica</i>	90	<i>Rhus in var</i>	148	<i>Xanthorhiza apifolia</i>	207	<i>Paeonia in var.</i>
29	<i>Rhus odoratus</i>	91	<i>Cercis in var</i>	149	<i>Populus in var</i>	208	<i>Rose border</i>
30	<i>Spiraea arica-folia</i>	92	<i>Aralia in var</i>	150	<i>Diervilla candida</i>	209	<i>Cypress in var.</i>
31	<i>Rosa lucida</i>	93	<i>Crataegus in rose</i>	151	" <i>Abel Carriere</i>	210	<i>Taxus in var.</i>
32	<i>Aralia spinosa</i>	94	<i>Hibiscus (Rose Mallow) in var</i>	152	" <i>P. Duchateau</i>	211	<i>Rhododendron in var.</i>
33	<i>Hamamelis virginica</i>	95	<i>Pavia macrostachya</i>	153	" <i>rosea</i>	212	<i>Halmia latifolia</i>
34	<i>Spirae Lindleyana</i>	96	<i>Esculus in var</i>	154	<i>Calycanthus floridus</i>	213	<i>Andromeda polifolia</i>
35	<i>Aralia pentaphylla</i>	97	<i>Cornus Florida rubra</i>	155	<i>Sassafras officinate</i>	214	<i>Azalea smona</i>
36	<i>Hypericum in var</i>	98	" <i>circinata</i>	156	<i>Syrux (crab apple) in var</i>	215	<i>Trifoma in var.</i>
37	<i>Mirrica cerifera</i>	99	<i>Desmodium penduliflora</i>	157	<i>Rosa rosgus rubra</i>	216	<i>Iris Kämpferi</i>
38	<i>Mahonia aquifolium</i>	100	<i>Tilia in var</i>	158	<i>Ligustrum Ifoia</i>	217	<i>Lobelia cardinalis</i>
39	" <i>Japonicum</i>	101	<i>Acer in var</i>	159	<i>Selix rosmarinifolia</i>	218	<i>Ilex opaca</i>
40	<i>Salix vitellina aurea</i>	102	<i>Spiraea prunifolia fl. pl.</i>	160	<i>Syringa Persica and Persica alba</i>	219	<i>Pyrus scobus in var</i>
41	<i>Cornus paniculata</i>	103	<i>Rosa Wichuraina</i>	161	<i>Herbaceous border</i>	220	<i>Eulalia Japonica</i>
42	<i>Tsuga canadensis</i>	104	<i>Rhus glabra laciniata</i>	162	<i>Acer dasycarpum Wierli</i>	221	<i>Lyrium barbarum</i>
43	<i>Berberis vulgaris</i>	105	<i>Magnolia stellata</i>	163	<i>Castanea Americana</i>	222	<i>Acer saccharinum</i>
44	<i>Symphoricarpos racemosa</i>	106	<i>Cornus in var</i>	164	<i>Catalpa Bignonoides</i>	223	<i>Rhodotyus</i>
45	" <i>vulgaris</i>	107	<i>Magnolia tripetelata</i>	165	<i>Magnolia macrophylla</i>	224	<i>Allanthus glandulosa—</i>
46	<i>Sambucus racemosa</i>	108	" <i>conspicua</i>	166	<i>Gladriasis tinctoria</i>	225	<i>Baercharis balmfolia</i>
47	" <i>Canadensis</i>	109	<i>Cotoneaster in var</i>	167	<i>Gymnocladus Canadensis</i>	226	<i>Andromeda floribunda</i>
48	<i>Rosa rubiginosa</i>	110	<i>Eonymus in var</i>	168	<i>Liquidambar styraciflua</i>	227	<i>Rhus cotinus</i>
49	<i>Ribes in var</i>	111	<i>Salix laurifolia</i>	169	<i>Acer rubrum</i>	228	<i>Tescoma radicans</i>
50	<i>Abies alba</i>	112	<i>Tilia Americana</i>	170	<i>Fagus sylvatica</i>	229	<i>Wisteria "bifensis</i>
51	<i>Cornus stolonifera</i>	113	<i>Viburnum in var</i>	171	<i>Nyssa multiflora</i>	230	<i>Hedera Helix</i>
52	<i>Lindera Benzoin</i>	114	<i>Betula alba pendula laciniata</i>	172	<i>Magnolia Soulangeana</i>	231	<i>Koelreuteria paniculata</i>
53	<i>Salix rigida</i>	115	<i>Ligustrum in var</i>	173	<i>Quercus alba</i>	232	<i>Herbaceous plants in var</i>
54	<i>Amelanchier Canadensis</i>	116	<i>Quercus palustris</i>	174	" <i>bicolor</i>	233	<i>Cytisus laburnum</i>
55	<i>Clethra sinifolia</i>	117	" <i>rubra</i>	175	" <i>coccinea</i>	234	<i>Azalea rufiflora</i>
56	<i>Kerria in var</i>	118	<i>Acer Japonicum</i>	176	" <i>prinus</i>	235	<i>Bamamelis Japonica</i>
57	<i>Althea in var</i>	119	<i>Spiraea Thunbergii</i>	177		236	<i>Abies alba</i>
58	<i>Elochorda in grandiflora</i>	120	<i>Rhamnus in var</i>	178		237	<i>Castanea vesca</i>
59	<i>Lyceum in var</i>			179		238	<i>Ornamental grasses in var.</i>
60	<i>Colutea in var</i>						
61	<i>Ceanothus in var</i>						
62	<i>Ferns in var</i> and <i>Saxefroza cordifolia</i>						

**The beds in formal Garden in rear of Office are filled as follows:**

1	<i>Ricinus communis</i>	22	<i>Anemone japonica rubra</i>	43	<i>Campanula rotundifolia</i>	65	<i>Saponaria ocyroides</i>
2	<i>Canna Alphonse Bouvier</i>	23	<i>Thuya orientalis pyramid-</i>	44	<i>Veronica rupestris</i>	66	<i>Anemone Sylvestris</i>
3	<i>Caladium osculentum</i>	24	<i>alib</i>	45	<i>Viola odorata</i>	67	<i>Iris Pseudo-acorus</i>
4	<i>Astilbe Japonica</i>	25	<i>Delphinium formosum</i>	46	<i>Beselia Americana</i>	68	<i>Papaver nudicaule</i>
5	<i>Pennisetum longistylum</i>	26	<i>Digitalis purpurea</i>	47	<i>Aquilegia chrysantha</i>	69	<i>Aquilegia in var.</i>
6	<i>Rosa Indica odorata hybrida</i>	27	<i>Lilium canadense</i>	48	<i>Linum perenne</i>	70	<i>Lilies (white)</i>
7	<i>Rosa Polyantha</i>	28	<i>Yucca filamentosa</i>	49	<i>Starcke latifolia</i>	71	" <i>(red)</i>
8	" <i>lutea</i>	29	<i>Pyrethrum roseum</i>	50	<i>Cysochilla paniculata</i>	72	<i>Hollyhocks (dark)</i>
9	" <i>rubifolia</i>	30	<i>Crocopsis tinctoria</i>	51	<i>Phlox subulata alba</i>	73	" <i>(light)</i>
10	" <i>Centifolia muscosa</i>	31	<i>Rudbeckia speciosa</i>	52	<i>Saxifraga crassifolia</i>	74	<i>Tall Phlox. (white) and yellow tulips</i>
11	" <i>Bourboniana</i>	32	<i>Monarda didyma</i>	53	<i>Bellis perennis</i>	75	<i>Crocopsis lanceolata</i>
12	" <i>damascena hybrida</i>	33	<i>Lobelia cardinalis</i>	54	<i>Pansies in var.</i>	76	<i>Althea in var.</i>
13	<i>Dianthus plumarius (the pink)</i>	34	<i>Alyssum saxatile</i>	55	<i>Antennaria tinctoria</i>	77	<i>Lilium auratum L. candidum, etc.</i>
14	<i>Dwarf evergreens in var.</i>	35	<i>Papaver orientalis</i>	56	<i>Tritoma uaria</i>	77	<i>Aquilegia canadensis</i>
15	<i>Paeonies (red)</i>	36	<i>Oenothera speciosa</i>	57	<i>Iris Imogene Ware</i>	78	<i>Dwarf Plants in var.—</i>
16	" <i>(white)</i>	37	" <i>missouriensis</i>	58	" <i>floranta</i>	79	<i>Violets, Hairbells,</i>
17	" <i>(pink)</i>	38	<i>Lysimachia nummularia—</i>	59	<i>Campanula Purple</i>	80	<i>Narcissus, Snowdrops,</i>
18	<i>Anemone japonica alba</i>	39	<i>(Moneywort)</i>	60	" <i>atropurpurea</i>	81	<i>Forget-me-nots, Phlox,</i>
19	<i>Sweet Alyssum</i>	40	<i>Hermericilla flava</i>	61	<i>Forget-me-nots</i>	82	<i>Camivuff, etc.</i>
20	<i>Vinea minor</i>	41	<i>Campanula carpathica</i>	62	<i>Diontra eximia</i>	83	<i>Tall Phlox (pink) and red tulips.</i>
21	<i>Phlox subulata</i>	42	<i>Iberis sempervirens</i>	63	<i>Funkia grandiflora</i>		
		43	<i>Salvia pratense</i>	64	<i>Iris cristata</i>		

**NOTE—The first number in each group refers to list; the second indicates quantity.**



FAVORITE SPOTS IN THE PARK SURROUNDING OUR OFFICE.



P. 71. 5. - 1



3 9077 03559 2909

