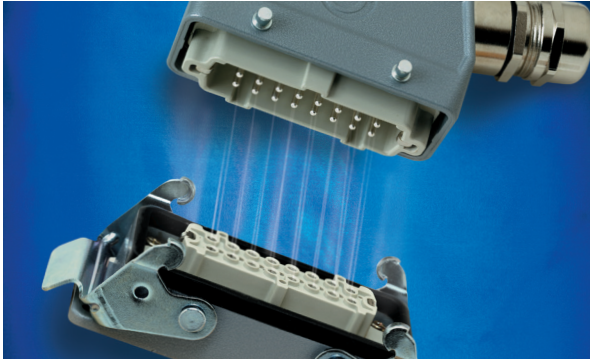


## EPIC® Rectangular Housings Overview



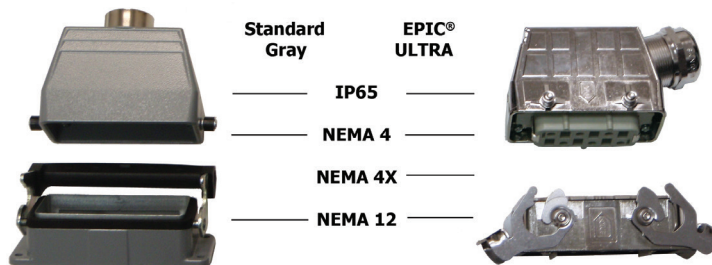
EPIC® rectangular connectors comply with all applicable requirements of Underwriters Laboratory (UL) Standards 1977 and 498, VDE Standard 0110 for creepage and clearance distances, and VDE Standard 0627 for the connector design.

The recognized UL file number and Canadian Standards Association (CSA) for EPIC® connectors are UL #E75770 and CSA #LR53004-1.

EPIC® connectors meet IP65, NEMA 4, 4X, and NEMA 12 standards only when in the mated condition.

Housing		Plugs & Receptacles										
Standard Gray	ULTRA HB	HBE	HA	HQ	STA	HEE	HBS	HBVE	HD	HDD	MC	Mixed Power
HB 6	HB 6	HBE 6	—	—	—	HEE 10	—	—	—	HDD 24	MC 2	—
HB 10	HB 10	HBE 10	—	—	—	HEE 18	—	HBVE 3	—	HDD 42	MC 3	—
HB 16	HB 16	HBE 16	—	—	—	HEE 32	HBS 6	HBVE 6	HD 40	HDD 72	MC 5	4+0, 4+2
HB 24	HB 24	HBE 24	—	—	—	HEE 46	—	HBVE 10	HD 64	HDD 108	MC 7	4+8
HB 32	—	HBE 32	—	—	—	HEE 64	HBS 12	—	HD 80	HDD 144	MC 10	—
HB 48	—	HBE 48	—	—	—	HEE 92	—	—	HD 128	HDD 216	MC 14	—
HA 3/4	—	—	HA 3/4	HQ 5	STA 6	—	—	—	HD 7/8	—	—	—
HA 10	—	—	HA 10	—	STA 14	—	—	—	HD 15	—	—	—
HA 16	—	—	HA 16	—	STA 20	—	—	—	HD 25	—	—	—
HA 32	—	—	HA 32	—	STA 40	—	—	—	HD 50	—	—	—
HA 48	—	—	HA 48	—	—	—	—	—	—	—	—	—
HA 64	—	—	HA 64	—	—	—	—	—	—	—	—	—

	Housing Size	EPIC® Standard Gray Housing	EPIC® ULTRA HB Housing
<b>Specification</b>		DIN 43652	DIN 43652
<b>Temperature Range</b>		-40°C to +100°C (short term up to +125°C)	-40°C to +100°C
<b>Protection Class</b>		IP65, NEMA 4 & 12	IP65, NEMA 4, 4X & 12
<b>Material</b>	HA 3/4	Powder-coated zinc or thermoplastic with zinc-plated steel hardware	—
	HA 10 - 64	Powder-coated aluminum with zinc-plated steel hardware	—
	HB 6 - 24	Powder-coated aluminum with zinc-plated steel hardware	Nickel-plated zinc with stainless steel hardware
	HB 32 - 48	Powder-coated aluminum with zinc-plated steel hardware	—
<b>Seal</b>		NBR	NBR



Photographs are not to scale and are not true representations of the products in question. For current information go to our website. If not otherwise specified, all values relating to the product are nominal values.

## SKINTOP® Overview

### Complete Your Installation with SKINTOP® Strain Relief

Your installation can be completed with a SKINTOP® strain relief gland. EPIC® connectors mate with SKINTOP® glands without locknuts. Use of tapered (NPT) threads with EPIC® rectangular connectors requires the use of a thread sealant.

## SKINTOP® SL

### Non-Metallic Strain Relief with PG Thread

#### Approvals



For additional information, see page 508.

Part Number		Thread Type & Size
without locknut	with locknut	
53015030	S1113	PG 13
53015040	S1116	PG 16
53015050	S1121	PG 21
53015060	S1129	PG 29
53015070	S1136	PG 36
53015080	S1142	PG 42



## SKINTOP® MS

### Metallic Strain Relief with PG Thread

#### Approvals



For additional information, see page 521.

Part Number		Thread Type & Size
without locknut	with locknut	
52015730		PG 13
52015740		PG 16
52015750		PG 21
52015760		PG 29
52015765		PG 36
52015766		PG 42



## SKINTOP® SLM

### Non-Metallic Strain Relief with Metric Thread

#### Approvals



For additional information, see page 509.

Part Number		Thread Type & Size
without locknut	with locknut	
53111020	S1513	M20 x 1.5
53111030	S1516	M25 x 1.5
53111040	S1521	M32 x 1.5
53111050	S1529	M40 x 1.5
53111060	S1536	M50 x 1.5



## SKINTOP® MS-M

### Metric Liquid-Tight, Metallic Strain Relief

#### Approvals



For additional information, see page 523.

Part Number		Thread Type & Size
without locknut	with locknut	
53112020		M20 x 1.5
53112030		M25 x 1.5
53112040		M32 x 1.5
53112050		M40 x 1.5
53112060		M50 x 1.5

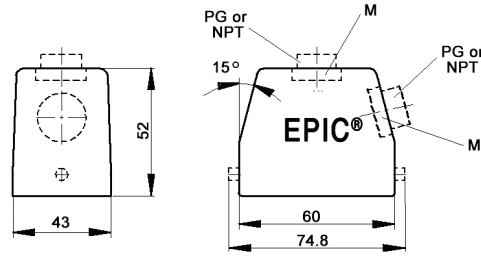


Photographs are not to scale and are not true representations of the products in question.

For current information go to our website. If not otherwise specified, all values relating to the product are nominal values.

# EPIC® HB 6 Standard Hoods

## Single Lever Bolts



All dimensions are in mm.

### Technical Data

<b>Specifications:</b>	DIN 43652	<b>IP Protection Class:</b>	NEMA 4, NEMA 12, IP65
<b>Temperature Range:</b>	-40°C to +125°C	<b>Material:</b>	Powder-coated aluminum alloy

PG	Size of Entry		PG	Part Number		Complete the Installation: SKINTOP® Strain Relief, page 368			
	NPT	Metric		NPT	Metric	PG Nylon	PG Metal	Metric Nylon	Metric Metal
<b>Top Entry</b>									
13	1/2"	20	100110	100110NP	19011000*	53015030	52015700	53111020	53112020
16	1/2"	25	100210	100210NP	19021000	53015040	52015740	53111030	53112030
<b>Side Entry</b>									
13	1/2"	20	100120	100120NP	19012000	53015030	52015740	53111030	53112030
16	1/2"	25	100220	100220NP	19022000	53015040	52015740	53111030	53112030

\* Metric top-entry hoods do not come with a neck.

### Approvals



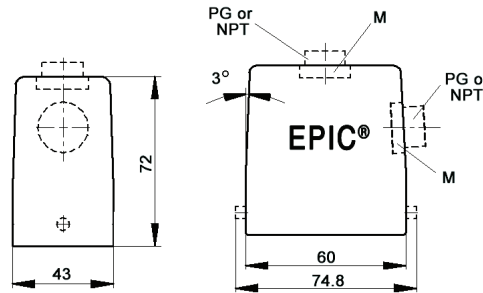
#### Complete the Installation



HB Dust Covers:  
page 415

# EPIC® HB 6 High Profile Hoods

## Single Lever Bolts



All dimensions are in mm.

### Technical Data

<b>Specifications:</b>	DIN 43652	<b>IP Protection Class:</b>	NEMA 4, NEMA 12, IP65
<b>Temperature Range:</b>	-40°C to +125°C	<b>Material:</b>	Powder-coated aluminum alloy

PG	Size of Entry		PG	Part Number		Complete the Installation: SKINTOP® Strain Relief, page 368			
	NPT	Metric		NPT	Metric*	PG Nylon	PG Metal	Metric Nylon	Metric Metal
<b>Top Entry</b>									
21	3/4"	25	700202	700202NP	79020200	53015050	52015750	53111030	53112030
29	1"	32	700204R	700204NP	79020400	53015060	52015760	53111040	53112040
<b>Side Entry</b>									
21	3/4"	25	700222	700222NP	79022200	53015050	52015750	53111030	53112030
29	1"	32	700224R	700224NP	79022400	53015060	52015760	53111040	53112040

\* Metric hoods do not come with a neck.

### Approvals



#### Complete the Installation

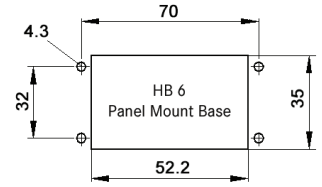
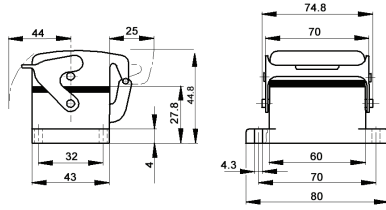


HB Dust Covers:  
page 415

Photographs are not to scale and are not true representations of the products in question.  
For current information go to our website. If not otherwise specified, all values relating to the product are nominal values.

# EPIC® HB 6 Panel Mount Bases

## Single Lever



All dimensions are in mm.

### Technical Data

<b>Specifications:</b>	DIN 43652	<b>IP Protection Class:</b>	NEMA 4, NEMA 12, IP65
<b>Temperature Range:</b>	-40°C to +125°C	<b>Material:</b>	Powder-coated aluminum alloy

Description	Part Number
Panel Mount Base	100030C0
Panel Mount Base with Dust Cover	100040C0

### Complete the Installation



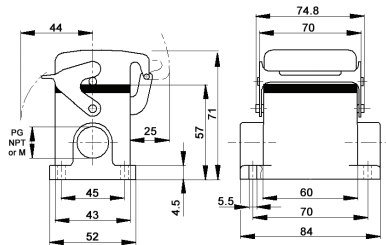
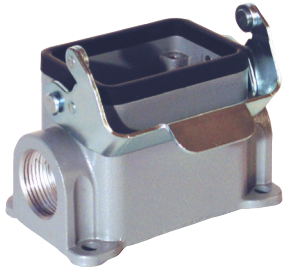
HB Dust Covers:  
page 415

### Approvals



# EPIC® HB 6 Surface Mount Bases

## Single Lever



All dimensions are in mm.



### Technical Data

<b>Specifications:</b>	DIN 43652	<b>IP Protection Class:</b>	NEMA 4, NEMA 12, IP65
<b>Temperature Range:</b>	-40°C to +125°C	<b>Material:</b>	Powder-coated aluminum alloy

PG	Size of Entry		PG	Part Number		Complete the Installation: SKINTOP® Strain Relief, page 368			
	NPT	Metric		NPT	Metric	PG Nylon	PG Metal	Metric Nylon	Metric Metal
<b>2 Entries</b>									
16	1/2"	20	100060	100060NP	19006000	53015040	52015740	53111020	53112020
-	-	25	-	-	79006600	-	-	53111030	53112030
<b>1 Entry</b>									
16	1/2"	20	100050	100050NP	19005000	53015040	52015740	53111020	53112020
-	-	25	-	-	79005600	-	-	53111030	53112030
<b>2 Entries with Dust Cover</b>									
16	1/2"	20	100090	100090NP	19009000	53015040	52015740	53111020	53112020
-	-	25	-	-	79016600	-	-	53111030	53112030
<b>1 Entry with Dust Cover</b>									
16	1/2"	20	100070	100070NP	19007000	53015040	52015740	53111020	53112020
-	-	25	-	-	79015600	-	-	53111030	53112030

### Approvals



### Complete the Installation



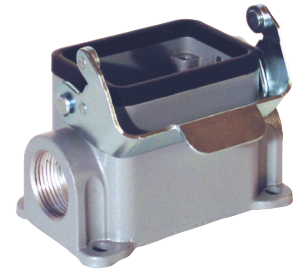
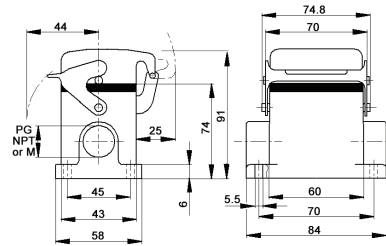
HB Dust Covers:  
page 415

Photographs are not to scale and are not true representations of the products in question.

For current information go to our website. If not otherwise specified, all values relating to the product are nominal values.

# EPIC® HB 6 High Profile Surface Mount Bases

Single Lever



All dimensions are in mm.

<b>Technical Data</b>			
Specifications:	DIN 43652	Protection Class:	NEMA 4, NEMA 12, IP65
Temperature Range:	-40°C to +125°C	Material:	Powder-coated aluminum alloy

PG	Size of Entry		PG	Part Number		Complete the Installation: SKINTOP® Strain Relief, page 368			
	NPT	Metric		NPT	Metric	PG Nylon	PG Metal	Metric Nylon	Metric Metal
<b>2 Entries</b>									
21	3/4"	25	700062	700062NP	79006200	53015050	52015750	53111030	53112030
29	1"	32	—	—	79006400	—	—	53111040	53112040
<b>1 Entry</b>									
21	3/4"	25	700052	700052NP	79005200	53015050	52015750	53111030	53112030
29	1"	32	700054	700054NP	79005400	53015060	52015760	53111040	53112040
<b>2 Entries with Dust Cover</b>									
21	3/4"	25	700162	700162NP	79016200	53015050	52015750	53111030	53112030
29	1"	32	—	—	79016400	—	—	53111040	53112040
<b>1 Entry with Dust Cover</b>									
21	3/4"	25	700152	700152NP	79015200	53015050	52015750	53111030	53112030
29	1"	32	—	—	79015400	—	—	53111040	53112040

## Approvals



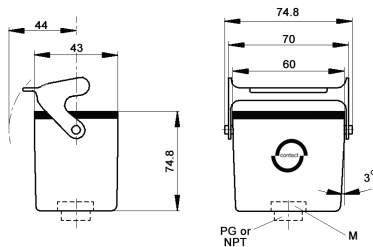
### Complete the Installation



HB Dust Covers:  
page 415

# EPIC® HB 6 Cable Coupler Hoods

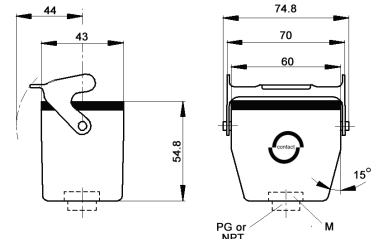
Single Lever



High Profile



All dimensions are in mm.



Standard Profile

<b>Technical Data</b>			
Specifications:	DIN 43652	Protection Class:	NEMA 4, NEMA 12, IP65
Temperature Range:	-40°C to +125°C	Material:	Powder-coated aluminum alloy

PG	Size of Entry		PG	Part Number		Complete the Installation: SKINTOP® Strain Relief, page 368			
	NPT	Metric		NPT	Metric*	PG Nylon	PG Metal	Metric Nylon	Metric Metal
<b>Standard Profile</b>									
13	1/2"	25	100140	100140NP	19014000	53015050	52015750	53111030	53112030
16	1/2"	32	100240	100240NP	19024000	53015060	52015760	53111040	53112040
<b>High Profile</b>									
21	3/4"	25	700102	700102NP	79010200	53015050	52015750	53111030	53112030
29	1"	32	700104	700104NP	—	53015060	52015760	—	—

\* Metric hoods do not come with a neck.

## Approvals



### Complete the Installation

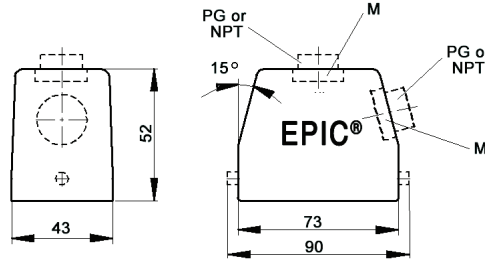


HB Dust Covers:  
page 415

Photographs are not to scale and are not true representations of the products in question. For current information go to our website. If not otherwise specified, all values relating to the product are nominal values.

# EPIC® HB 10 Standard Hoods

## Single Lever Bolts



All dimensions are in mm.

### Technical Data

<b>Specifications:</b>	DIN 43652	<b>IP Protection Class:</b>	NEMA 4, NEMA 12, IP65
<b>Temperature Range:</b>	-40°C to +125°C	<b>Material:</b>	Powder-coated aluminum alloy

PG	Size of Entry		PG	Part Number		Complete the Installation: SKINTOP® Strain Relief, page 368			
	NPT	Metric		NPT	Metric	PG Nylon	PG Metal	Metric Nylon	Metric Metal
<b>Top Entry</b>									
16	1/2"	20	100409	100409NP	19040900	53015040	52015740	53111020	53112020
21	3/4"	25	100407	100407NP	19040700*	53015050	52015750	53111030	53112030
<b>Side Entry</b>									
16	1/2"	20	100429	100429NP	19042900	53015040	52015740	53111020	53112020
21	3/4"	25	100428	100428NP	19042800*	53015050	52015750	53111030	53112030

\* Metric top-entry hoods do not come with a neck.

### Approvals



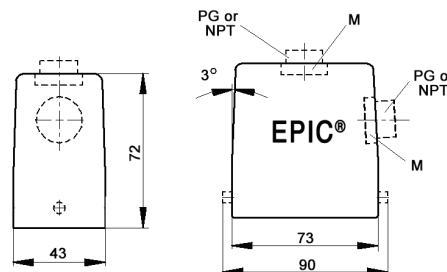
### Complete the Installation



HB Dust Covers:  
page 415

# EPIC® HB 10 High Profile Hoods

## Single Lever Bolts



All dimensions are in mm.

### Technical Data

<b>Specifications:</b>	DIN 43652	<b>IP Protection Class:</b>	NEMA 4, NEMA 12, IP65
<b>Temperature Range:</b>	-40°C to +125°C	<b>Material:</b>	Powder-coated aluminum alloy

PG	Size of Entry		PG	Part Number		Complete the Installation: SKINTOP® Strain Relief, page 368			
	NPT	Metric		NPT	Metric*	PG Nylon	PG Metal	Metric Nylon	Metric Metal
<b>Top Entry</b>									
21	3/4"	25	700442	700442NP	79044200	53015050	52015750	53111030	53112030
29	1"	32	700444	700444NP	79044400	53015060	52015760	53111040	53112040
<b>Side Entry</b>									
21	3/4"	25	700542	700542NP	79054200	53015050	52015750	53111030	53112030
29	1"	32	700544	700544NP	79054400	53015060	52015760	53111040	53112040

\* Metric hoods do not come with a neck.

### Approvals



### Complete the Installation

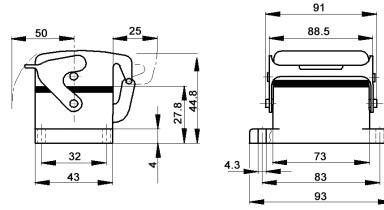
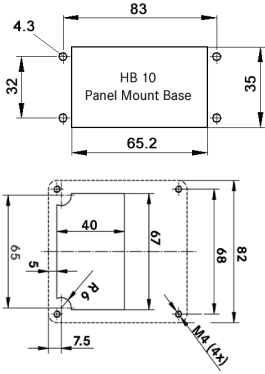


HB Dust Covers:  
page 415

Photographs are not to scale and are not true representations of the products in question. For current information go to our website. If not otherwise specified, all values relating to the product are nominal values.

# EPIC® HB 10 Panel Mount Bases

## Single Lever

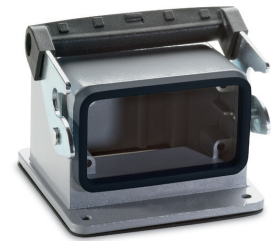
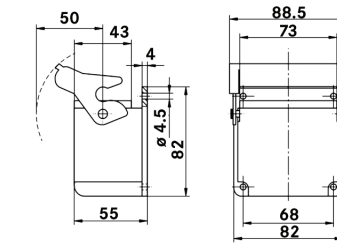


All dimensions are in mm.

HB 10 Right Angle Panel Mount Base

Technical Data	
Specifications:	DIN 43652
Temperature Range:	-40°C to +125°C
Protection Class:	NEMA 4, NEMA 12, IP65
Material:	Powder-coated aluminum alloy

Description	Part Number
Panel Mount Base	10032900
Panel Mount Base with Dust Cover	10033900
Right-Angle Panel Mount Base	44423026



**Complete the Installation**

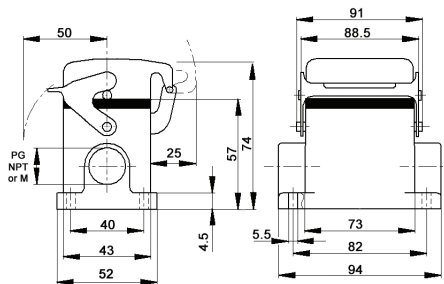
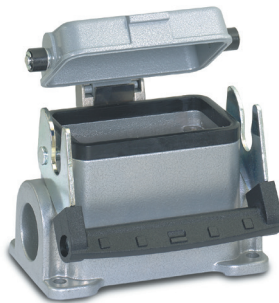
HB Dust Covers:  
page 415

**Approvals**

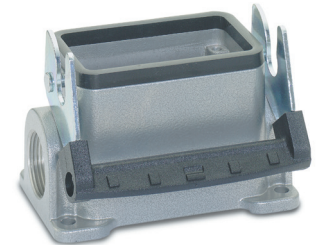


# EPIC® HB 10 Surface Mount Bases

## Single Lever



All dimensions are in mm.



Technical Data			
Specifications:	DIN 43652	Protection Class:	NEMA 4, NEMA 12, IP65
Temperature Range:	-40°C to +125°C	Material:	Powder-coated aluminum alloy

PG	Size of Entry		PG	Part Number		Complete the Installation: SKINTOP® Strain Relief, page 368			
	NPT	Metric		NPT	Metric	PG Nylon	PG Metal	Metric Nylon	Metric Metal
<b>2 Entries</b>									
16	1/2"	20	100359	100359NP	19035900	53015040	52015740	53111020	53112020
—	—	25	—	—	79061600	—	—	5311030	53112030
<b>1 Entry</b>									
16	1/2"	20	100349	100349NP	19034900	53015040	52015740	53111020	53112020
21	3/4"	25	100347	100347NP	19034700	53015050	52015750	53111030	53112030
<b>2 Entries with Dust Cover</b>									
16	1/2"	20	100389	100389NP	19038900	53015040	52015740	5311020	53112020
<b>1 Entry with Dust Cover</b>									
16	1/2"	20	100369	100369NP	79036900	53015040	52015740	53111020	53112020
—	—	25	—	—	79064600	—	—	53111030	53112030

**Approvals**



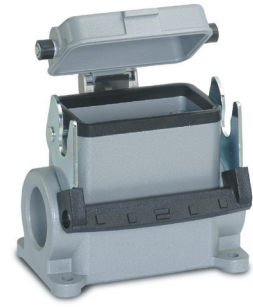
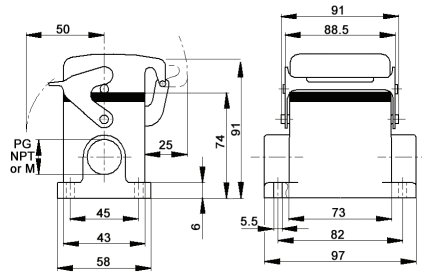
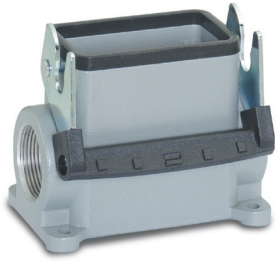
**Complete the Installation**

HB Dust Covers:  
page 415

Photographs are not to scale and are not true representations of the products in question. For current information go to our website. If not otherwise specified, all values relating to the product are nominal values.

# EPIC® HB 10 High Profile Surface Mount Bases

## Single Lever



All dimensions are in mm.

### Technical Data

<b>Specifications:</b>	DIN 43652	<b>Protection Class:</b>	NEMA 4, NEMA 12, IP65
<b>Temperature Range:</b>	-40°C to +125°C	<b>Material:</b>	Powder-coated aluminum alloy

PG	Size of Entry		PG	Part Number		Complete the Installation: SKINTOP® Strain Relief, page 368			
	NPT	Metric		NPT	Metric	PG Nylon	PG Metal	Metric Nylon	Metric Metal
<b>2 Entries</b>									
21	3/4"	25	700612	700612NP	79061200	53015050	52015750	53111030	53112030
29	1"	32	700614	700614NP	79061400	53015060	52015760	53111040	53112040
<b>1 Entry</b>									
21	3/4"	25	700602	700602NP	79060200	53015050	52015750	53111030	53112030
29	1"	32	700604R	700604NP	79060400	53015060	52015760	53111040	53112040
<b>2 Entries with Dust Cover</b>									
21	3/4"	25	700652	700652NP	79065200	53015050	52015750	53111030	53112030
29	1"	32	700654	700654NP	79065400	53015060	52015760	53111040	53112040
<b>1 Entry with Dust Cover</b>									
21	3/4"	25	700642	700642NP	79064200	53015050	52015750	53111030	53112030
29	1"	32	700644	700644NP	79064400	53015060	52015760	53111040	53112040

### Approvals



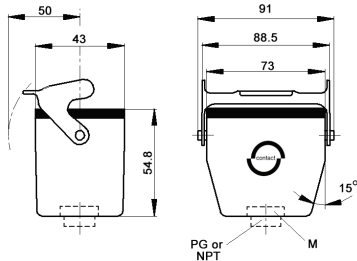
### Complete the Installation



HB Dust Covers:  
page 415

# EPIC® HB 10 Cable Coupler Hoods

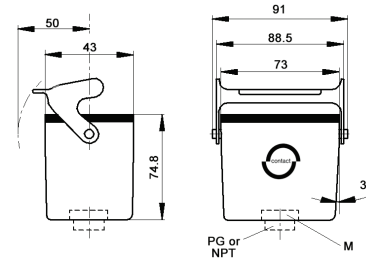
## Single Lever



Standard Profile



All dimensions are in mm.



High Profile

### Technical Data

<b>Specifications:</b>	DIN 43652	<b>Protection Class:</b>	NEMA 4, NEMA 12, IP65
<b>Temperature Range:</b>	-40°C to +125°C	<b>Material:</b>	Powder-coated aluminum alloy

PG	Size of Entry		PG	Part Number		Complete the Installation: SKINTOP® Strain Relief, page 368			
	NPT	Metric		NPT	Metric*	PG Nylon	PG Metal	Metric Nylon	Metric Metal
<b>Standard Profile</b>									
16	1/2"	20	100469	100469NP	19046900	53015040	52015740	53111020	53112030
21	3/4"	25	700422	700422NP	79042200	53015050	52015750	53111030	53112030
<b>High Profile</b>									
21	3/4"	25	700424	700424NP	79042400	53015050	52015750	53111030	53112030
29	1"	32	700426	700426NP	79042600	53015060	52015760	53111040	53112040

\* Metric hoods do not come with a neck.

### Approvals



### Complete the Installation



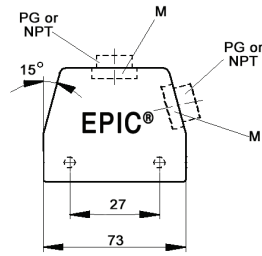
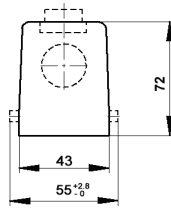
HB Dust Covers:  
page 415

Photographs are not to scale and are not true representations of the products in question. For current information go to our website. If not otherwise specified, all values relating to the product are nominal values.



# EPIC® HB 10 Standard Hoods

## Double Lever Bolts



All dimensions are in mm.

<b>Technical Data</b>	
<b>Specifications:</b>	DIN 43652
<b>Protection Class:</b>	NEMA 4, NEMA 12, IP65
<b>Temperature Range:</b>	-40°C to +125°C
<b>Material:</b>	Powder-coated aluminum alloy

PG	Size of Entry		PG	Part Number		Complete the Installation: SKINTOP® Strain Relief, page 368			
	NPT	Metric		NPT	Metric	PG Nylon	PG Metal	Metric Nylon	Metric Metal
<b>Top Entry</b>									
16	1/2"	20	100400	100400NP	19040000*	53015040	52015740	53111020	53112020
21	3/4"	25	100401	100401NP	19040100	53015050	52015750	53111030	53112030
<b>Side Entry</b>									
16	1/2"	20	100420	100420NP	19042000	53015040	52015740	53111020	53112020
21	3/4"	25	100421	100421NP	19042100	53015050	52015750	53111030	53112030

\* Metric top-entry hoods do not come with a neck.

### Approvals



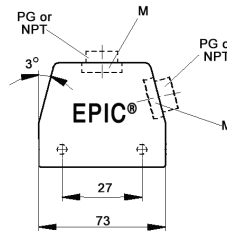
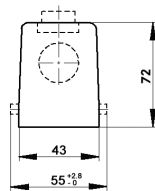
#### Complete the Installation



HB Dust Covers:  
page 415

# EPIC® HB 10 High Profile Hoods

## Double Lever Bolts



All dimensions are in mm.

<b>Technical Data</b>	
<b>Specifications:</b>	DIN 43652
<b>Protection Class:</b>	NEMA 4, NEMA 12, IP65
<b>Temperature Range:</b>	-40°C to +125°C
<b>Material:</b>	Powder-coated aluminum alloy

PG	Size of Entry		PG	Part Number		Complete the Installation: SKINTOP® Strain Relief, page 368			
	NPT	Metric		NPT	Metric*	PG Nylon	PG Metal	Metric Nylon	Metric Metal
<b>Top Entry</b>									
21	3/4"	25	700504	700504NP	79050400	53015050	52015750	53111030	53112030
29	1"	32	700506	700506NP	79050600	53015060	52015760	53111040	53112040
<b>Side Entry</b>									
21	3/4"	25	700524	700524NP	79052400	53015050	52015750	53111030	53112030
29	1"	32	700526	700526NP	79052600	53015060	52015760	53111040	53112040

\* Metric hoods do not come with a neck.

### Approvals



#### Complete the Installation

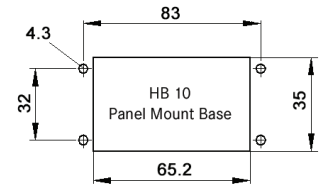
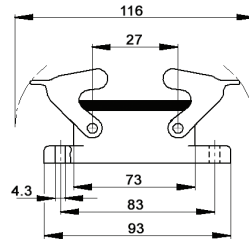
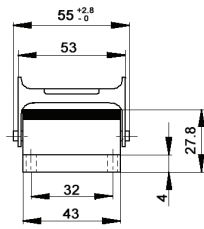
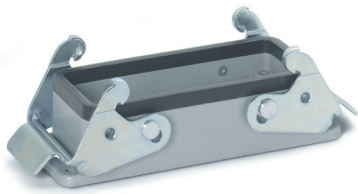


HB Dust Covers:  
page 415

Photographs are not to scale and are not true representations of the products in question.  
For current information go to our website. If not otherwise specified, all values relating to the product are nominal values.

# EPIC® HB 10 Panel Mount Bases

## Double Levers



All dimensions are in mm.

### Technical Data

<b>Specifications:</b>	DIN 43652	<b>Protection Class:</b>	NEMA 4, NEMA 12, IP65
<b>Temperature Range:</b>	-40°C to +125°C	<b>Material:</b>	Powder-coated aluminum alloy

Description	Part Number
Panel Mount Base	100320C0

### Complete the Installation



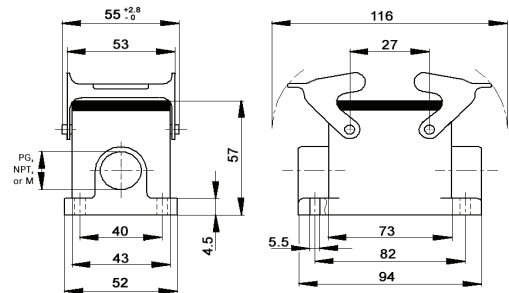
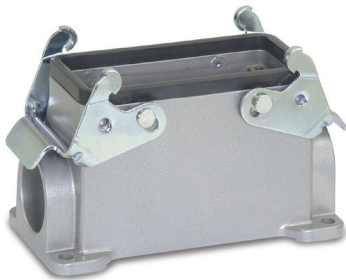
HB Dust Covers:  
page 415

### Approvals



# EPIC® HB 10 Surface Mount Bases

## Double Levers



All dimensions are in mm.

### Technical Data

<b>Specifications:</b>	DIN 43652	<b>Protection Class:</b>	NEMA 4, NEMA 12, IP65
<b>Temperature Range:</b>	-40°C to +125°C	<b>Material:</b>	Powder-coated aluminum alloy

PG	Size of Entry		PG	Part Number			Complete the Installation: SKINTOP® Strain Relief, page 368			
	NPT	Metric		PG	NPT	Metric	PG Nylon	PG Metal	Metric Nylon	Metric Metal
<b>2 Entries</b>										
16	1/2"	20	100350	100350NP	19035000	53015040	52015740	53111020	53112020	
-	-	25	-	-	19035100	-	-	53111030	53112030	
<b>1 Entry</b>										
16	1/2"	20	100340	100340NP	19034000	53015040	52015740	53111020	53112020	
-	-	25	-	-	19034100	-	-	53111030	53112030	

### Approvals



### Complete the Installation

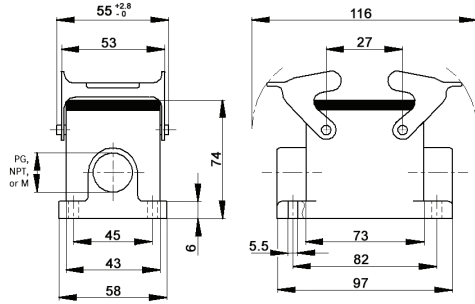


HB Dust Covers:  
page 415

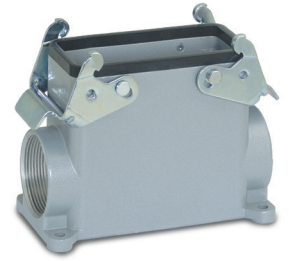
Photographs are not to scale and are not true representations of the products in question. For current information go to our website. If not otherwise specified, all values relating to the product are nominal values.

# EPIC® HB 10 High Profile Surface Mount Bases

## Double Levers



All dimensions are in mm.



<b>Technical Data</b>				
<b>Specifications:</b>	DIN 43652	<b>IP Protection Class:</b>	NEMA 4, NEMA 12, IP65	
<b>Temperature Range:</b>	-40°C to +125°C	<b>Material:</b>	Powder-coated aluminum alloy	

PG	Size of Entry		PG	Part Number		Complete the Installation: SKINTOP® Strain Relief, page 368			
	NPT	Metric		NPT	Metric	PG Nylon	PG Metal	Metric Nylon	Metric Metal
<b>2 Entries</b>									
21	3/4"	25	700362	700362NP	79036200	53015050	52015750	53111030	53112030
29	1"	32	700364	700364NP	79036400	53015060	52015760	53111040	53112040
<b>1 Entry</b>									
21	3/4"	25	700352	700352NP	79035200	53015050	52015750	53111030	53112030
29	1"	32	700354	700354NP	79035400	53015060	52015760	53111040	53112040

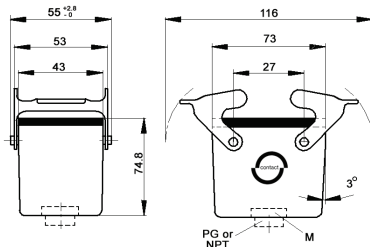
**Approvals**

**Complete the Installation**

HB Dust Covers: page 415

# EPIC® HB 10 Cable Coupler Hoods

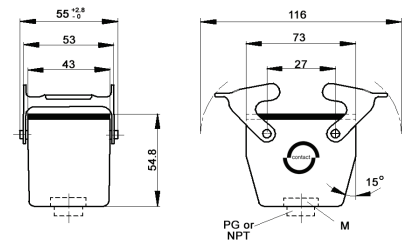
## Double Levers



High Profile



All dimensions are in mm.



Standard Profile

<b>Technical Data</b>				
<b>Specifications:</b>	DIN 43652	<b>IP Protection Class:</b>	NEMA 4, NEMA 12, IP65	
<b>Temperature Range:</b>	-40°C to +125°C	<b>Material:</b>	Powder-coated aluminum alloy	

PG	Size of Entry		PG	Part Number		Complete the Installation: SKINTOP® Strain Relief, page 368			
	NPT	Metric		NPT	Metric*	PG Nylon	PG Metal	Metric Nylon	Metric Metal
<b>Standard Profile</b>									
16	1/2"	20	100460	100460NP	19046000	53015040	52015740	53111020	53112030
21	3/4"	25	700402	700402NP	79040200	53015050	52015750	53111030	53112030
<b>High Profile</b>									
21	1/2"	25	700404R	700404NP	79040400	53015050	52015750	53111030	53112030
29	3/4"	32	700406	700406NP	79040600	53015060	52015760	53111040	53112040

\* Metric hoods do not come with a neck.

**Approvals**

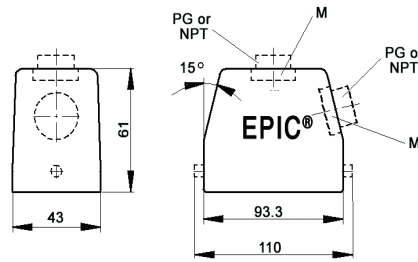
**Complete the Installation**

HB Dust Covers: page 415

Photographs are not to scale and are not true representations of the products in question. For current information go to our website. If not otherwise specified, all values relating to the product are nominal values.

# EPIC® HB 16 Standard Hoods

## Single Lever Bolts



All dimensions are in mm.



### Technical Data

<b>Specifications:</b>	DIN 43652	<b>IP Protection Class:</b>	NEMA 4, NEMA 12, IP65
<b>Temperature Range:</b>	-40°C to +125°C	<b>Material:</b>	Powder-coated aluminum alloy

PG	Size of Entry		PG	Part Number		Complete the Installation: SKINTOP® Strain Relief, page 368			
	NPT	Metric		NPT	Metric	PG Nylon	PG Metal	Metric Nylon	Metric Metal
<b>Top Entry</b>									
21	3/4"	25	100809	100809NP	19080900*	53015050	52015750	53111030	53112030
<b>Side Entry</b>									
21	3/4"	25	100829	100829NP	19082900	53015050	52015750	53111030	53112030
29	1"	32	100929	100929NP	19092900	53015060	52015760	53111040	53112040

\* Metric top-entry hoods do not come with a neck.

### Approvals



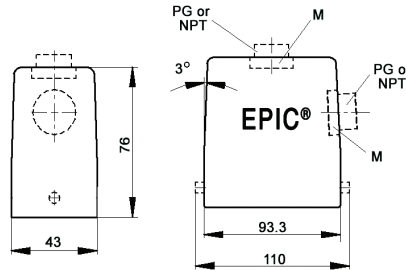
#### Complete the Installation



HB Dust Covers:  
page 415

# EPIC® HB 16 High Profile Hoods

## Single Lever Bolts



All dimensions are in mm.



### Technical Data

<b>Specifications:</b>	DIN 43652	<b>IP Protection Class:</b>	NEMA 4, NEMA 12, IP65
<b>Temperature Range:</b>	-40°C to +125°C	<b>Material:</b>	Powder-coated aluminum alloy

PG	Size of Entry		PG	Part Number		Complete the Installation: SKINTOP® Strain Relief, page 368			
	NPT	Metric		NPT	Metric*	PG Nylon	PG Metal	Metric Nylon	Metric Metal
<b>Top Entry</b>									
21	3/4"	25	700942	700942NP	79094200	53015050	52015750	53111030	53112030
29	1"	32	700944	700944NP	79094400	53015060	52015760	53111040	53112040
-	-	40	-	-	79094600	-	-	53111050	53112050
<b>Side Entry</b>									
21	3/4"	25	701042	701042NP	79104200	53015050	52015750	53111030	53112030
29	1"	32	701044	701044NP	79104400	53015060	52015760	53111040	53112040
-	-	40	-	-	79104800	-	-	53111050	53112050

\* Metric hoods do not come with a neck.

### Approvals



#### Complete the Installation

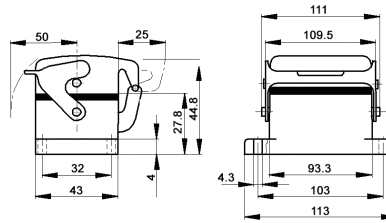
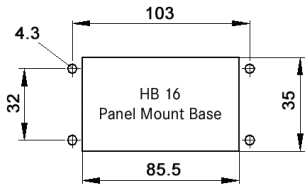


HB Dust Covers:  
page 415

Photographs are not to scale and are not true representations of the products in question. For current information go to our website. If not otherwise specified, all values relating to the product are nominal values.

# EPIC® HB 16 Panel Mount Bases

Single Lever



All dimensions are in mm.

Technical Data			
Specifications:	DIN 43652	Protection Class:	NEMA 4, NEMA 12, IP65
Temperature Range:	-40°C to +125°C	Material:	Powder-coated aluminum alloy

Description	Part Number
Panel Mount Base	10072900
Panel Mount Base with Dust Cover	10073900

**Complete the Installation**



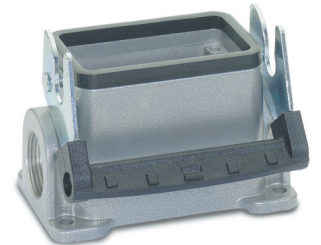
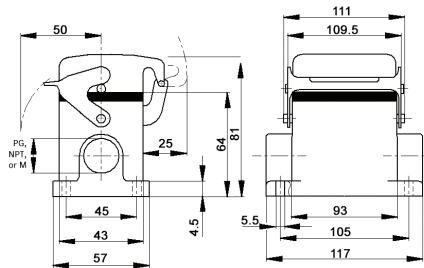
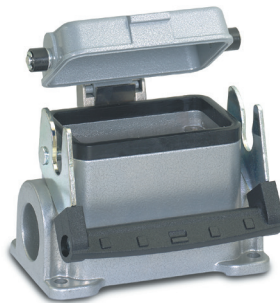
HB Dust Covers: page 415

**Approvals**



# EPIC® HB 16 Surface Mount Bases

Single Lever



All dimensions are in mm.

Technical Data			
Specifications:	DIN 43652	Protection Class:	NEMA 4, NEMA 12, IP65
Temperature Range:	-40°C to +125°C	Material:	Powder-coated aluminum alloy

PG	Size of Entry		PG	Part Number		Complete the Installation: SKINTOP® Strain Relief, page 368			
	NPT	Metric		NPT	Metric	PG Nylon	PG Metal	Metric Nylon	Metric Metal
<b>2 Entries</b>									
21	3/4"	25	100759	100759NP	19075900	53015050	52015750	53111030	53112030
<b>1 Entry</b>									
21	3/4"	25	100749	100749NP	19074900	53015050	52015750	53111030	53112030
<b>2 Entries with Dust Cover</b>									
21	3/4"	25	100789	100789NP	19078900	53015050	52015750	53111030	53112030
<b>1 Entry with Dust Cover</b>									
21	3/4"	25	100769	100769NP	19076900	53015050	52015750	53111030	53112030

**Approvals**



**Complete the Installation**

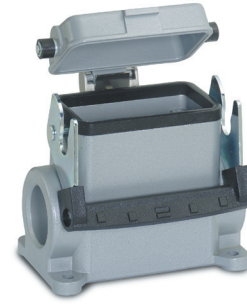
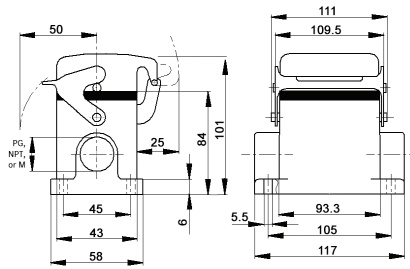
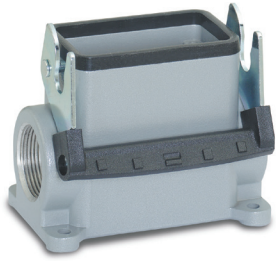


HB Dust Covers: page 415

Photographs are not to scale and are not true representations of the products in question. For current information go to our website. If not otherwise specified, all values relating to the product are nominal values.

# EPIC® HB 16 High Profile Surface Mount Bases

Single Lever



All dimensions are in mm.

### Technical Data

Specifications:	DIN 43652	Protection Class:	NEMA 4, NEMA 12, IP65
Temperature Range:	-40°C to +125°C	Material:	Powder-coated aluminum alloy

PG	Size of Entry		PG	Part Number		Complete the Installation: SKINTOP® Strain Relief, page 368			
	NPT	Metric		NPT	Metric	PG Nylon	PG Metal	Metric Nylon	Metric Metal
<b>2 Entries</b>									
21	3/4"	25	701112	701112NP	79111200	53015050	52015750	53111030	53112030
29	1"	32	701114	701114NP	79111400	53015060	52015760	53111040	53112040
<b>1 Entry</b>									
21	3/4"	25	701102	701102NP	79110200	53015050	52015750	53111030	53112030
29	1"	32	701104	701104NP	79110400	53015060	52015760	53111040	53112040
<b>2 Entries with Dust Cover</b>									
21	3/4"	25	701152	701152NP	79115200	53015050	52015750	53111030	53112030
29	1"	32	701154	701154NP	79115400	53015060	52015760	53111040	53112040
<b>1 Entry with Dust Cover</b>									
21	3/4"	25	701142	701142NP	79114200	53015050	52015750	53111030	53112030
29	1"	32	701144	701144NP	79114400	53015060	52015760	53111040	53112040

### Approvals



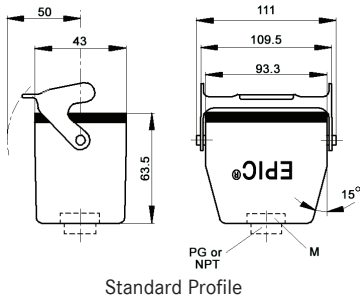
### Complete the Installation



HB Dust Covers: page 415

# EPIC® HB 16 Cable Coupler Hoods

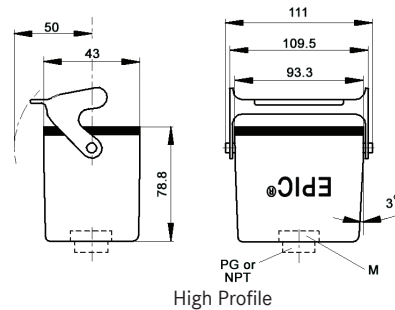
Single Lever



Standard Profile



All dimensions are in mm.



High Profile

### Technical Data

Specifications:	DIN 43652	Protection Class:	NEMA 4, NEMA 12, IP65
Temperature Range:	-40°C to +125°C	Material:	Powder-coated aluminum alloy

PG	Size of Entry		PG	Part Number		Complete the Installation: SKINTOP® Strain Relief, page 368			
	NPT	Metric		NPT	Metric*	PG Nylon	PG Metal	Metric Nylon	Metric Metal
<b>Standard Profile</b>									
21	3/4"	25	100869	100869NP	19086900	53015050	52015750	53111030	53112030
<b>High Profile</b>									
21	3/4"	25	700922	700922NP	79092200	53015050	52015750	53111030	53112030
29	1"	32	700924	700924NP	79092400	53015060	52015760	53111040	53112040

\* Metric hoods do not come with a neck.

### Approvals



### Complete the Installation

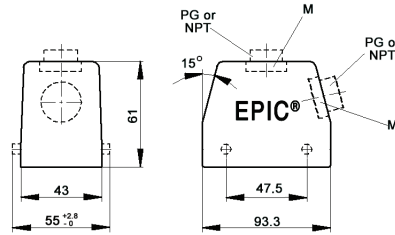


HB Dust Covers: page 415

Photographs are not to scale and are not true representations of the products in question. For current information go to our website. If not otherwise specified, all values relating to the product are nominal values.

# EPIC® HB 16 Standard Hoods

Double Lever Bolts



All dimensions are in mm.

<b>Technical Data</b>				
<b>Specifications:</b>	DIN 43652	<b>IP Protection Class:</b>	NEMA 4, NEMA 12, IP65	
<b>Temperature Range:</b>	-40°C to +125°C	<b>Material:</b>	Powder-coated aluminum alloy	

Size of Entry	PG		Part Number	Metric	Complete the Installation: SKINTOP® Strain Relief, page 368				
	NPT	Metric			PG Nylon	PG Metal	Metric Nylon	Metric Metal	
<b>Top Entry</b>									
21	3/4"	25	100800	100800NP	19080000*	53015050	52015750	53111030	53112030
—	—	25x2	—	—	19080500	—	—	53111030	53112030
29	1"	32	100900	100900NP	19090000*	53015060	52015760	53111040	53112040
<b>Side Entry</b>									
21	3/4"	25	100820	100820NP	19082000	53015050	52015750	53111030	53112030
29	1"	32	100920	100920NP	19092000	53015060	52015760	53111040	53112040

\* Metric top-entry hoods do not come with a neck.

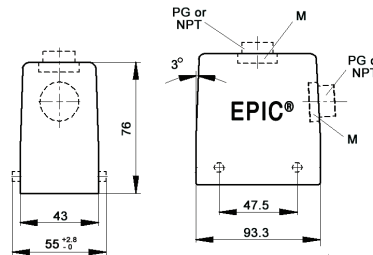
**Approvals**

**Complete the Installation**

HB Dust Covers: page 415

# EPIC® HB 16 High Profile Hoods

Double Lever Bolts



All dimensions are in mm.

\* Metric hoods do not come with a neck.

<b>Technical Data</b>				
<b>Specifications:</b>	DIN 43652	<b>IP Protection Class:</b>	NEMA 4, NEMA 12, IP65	
<b>Temperature Range:</b>	-40°C to +125°C	<b>Material:</b>	Powder-coated aluminum alloy	

Size of Entry	PG		Part Number	Metric*	Complete the Installation: SKINTOP® Strain Relief, page 368				
	NPT	Metric			PG Nylon	PG Metal	Metric Nylon	Metric Metal	
<b>Top Entry</b>									
21	3/4"	25	701002	701002NP	79100200	53015050	52015750	53111030	53112030
—	—	25x2	—	—	44422018	—	—	53111030	53112030
29	1"	32	701004R	701004NP	79100400	53015060	52015760	53111040	53112040
—	—	32x2	—	—	79128600	—	—	53111040	53112040
—	—	40	—	—	79100800	—	—	53111050	53112050
<b>Side Entry</b>									
21	3/4"	25	701022	701022NP	79102200	53015050	52015750	53111030	53112030
29	1"	23	701024	701024NP	79102400	53015060	52015760	53111040	53112040
—	—	40	—	—	79102800	—	—	53111050	53112050

**Approvals**

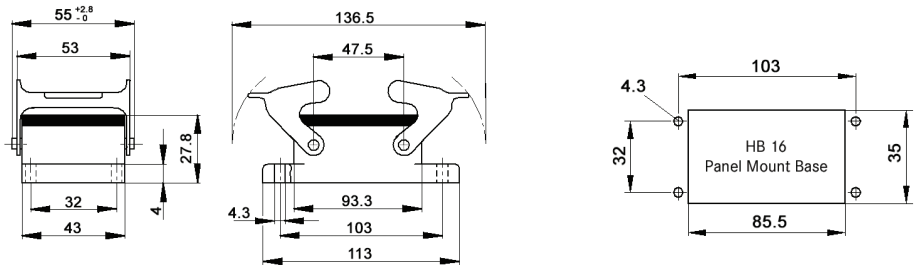
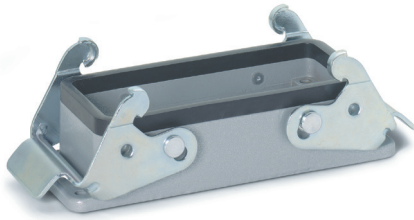
**Complete the Installation**

HB Dust Covers: page 415

Photographs are not to scale and are not true representations of the products in question. For current information go to our website. If not otherwise specified, all values relating to the product are nominal values.

# EPIC® HB 16 Panel Mount Bases

## Double Levers



All dimensions are in mm.

### Technical Data

<b>Specifications:</b>	DIN 43652	<b>Protection Class:</b>	NEMA 4, NEMA 12, IP65
<b>Temperature Range:</b>	-40°C to +125°C	<b>Material:</b>	Powder-coated aluminum alloy

Description	Part Number
Panel Mount Base	100720C0

### Complete the Installation



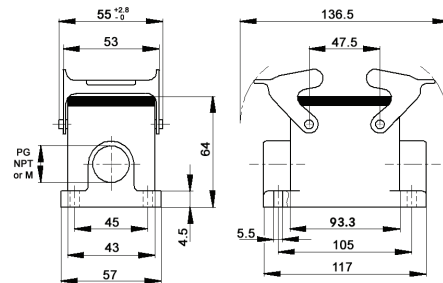
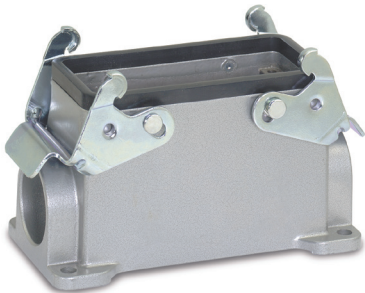
HB Dust Covers:  
page 415

### Approvals



# EPIC® HB 16 Surface Mount Bases

## Double Levers



All dimensions are in mm.

### Technical Data

<b>Specifications:</b>	DIN 43652	<b>Protection Class:</b>	NEMA 4, NEMA 12, IP65
<b>Temperature Range:</b>	-40°C to +125°C	<b>Material:</b>	Powder-coated aluminum alloy

PG	Size of Entry		PG	Part Number		Complete the Installation: SKINTOP® Strain Relief, page 368			
	NPT	Metric		NPT	Metric	PG Nylon	PG Metal	Metric Nylon	Metric Metal
<b>2 Entries</b>									
21	3/4"	25	100750	100750NP	19075000	53015050	52015750	53111030	53112030
<b>1 Entry</b>									
21	3/4"	25	100740	100740NP	19074000	53015050	52015750	53111040	53112030

### Approvals



### Complete the Installation



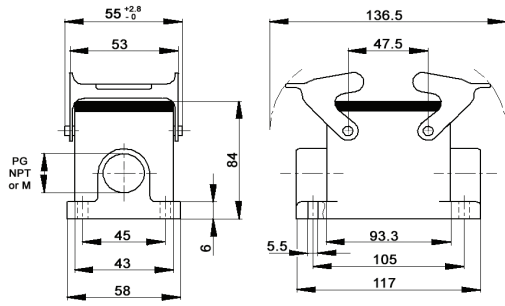
HB Dust Covers:  
page 415

Photographs are not to scale and are not true representations of the products in question. For current information go to our website. If not otherwise specified, all values relating to the product are nominal values.

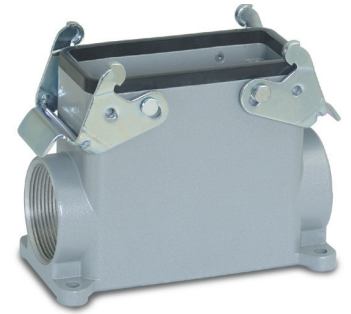


# EPIC® HB 16 High Profile Surface Mount Bases

## Double Levers



All dimensions are in mm.



Technical Data			
Specifications:	DIN 43652	Protection Class:	NEMA 4, NEMA 12, IP65
Temperature Range:	-40°C to +125°C	Material:	Powder-coated aluminum alloy

PG	Size of Entry		PG	Part Number		Complete the Installation: SKINTOP® Strain Relief, page 368			
	NPT	Metric		NPT	Metric	PG Nylon	PG Metal	Metric Nylon	Metric Metal
<b>2 Entries</b>									
21	3/4"	25	700862	700862NP	79086200	53015050	52015750	53111030	53112030
29	1"	32	700864	700864NP	79086400	53015060	52015760	53111040	53112040
<b>1 Entry</b>									
21	3/4"	25	700852	700852NP	79085200	53015050	52015750	53111030	53112030
29	1"	32	700854	700854NP	79085400	53015060	52015760	53111040	53112040

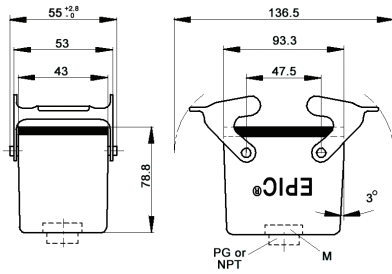
**Approvals**

**Complete the Installation**

HB Dust Covers: page 415

# EPIC® HB 16 Cable Coupler Hoods

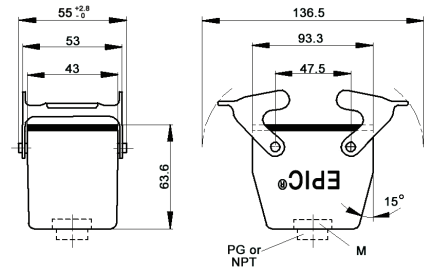
## Double Levers



High Profile



All dimensions are in mm.



Standard Profile

Technical Data			
Specifications:	DIN 43652	Protection Class:	NEMA 4, NEMA 12, IP65
Temperature Range:	-40°C to +125°C	Material:	Powder-coated aluminum alloy

PG	Size of Entry		PG	Part Number		Complete the Installation: SKINTOP® Strain Relief, page 368			
	NPT	Metric		NPT	Metric*	PG Nylon	PG Metal	Metric Nylon	Metric Metal
<b>Standard Profile</b>									
21	3/4"	25	100860	100860NP	19086000	53015050	52015750	53111030	53112030
<b>High Profile</b>									
21	3/4"	25	700902	700902NP	79090200	53015050	52015750	53111030	53112030
29	1"	32	700904	700904NP	79090400	53015060	52015760	53111040	53112040

\* Metric hoods do not come with a neck.

**Approvals**

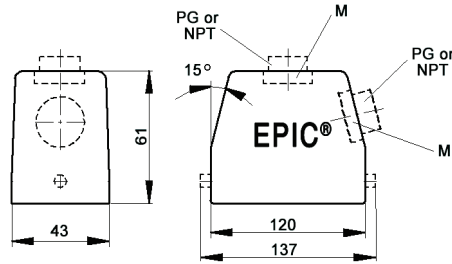
**Complete the Installation**

HB Dust Covers: page 415

Photographs are not to scale and are not true representations of the products in question. For current information go to our website. If not otherwise specified, all values relating to the product are nominal values.

# EPIC® HB 24 Standard Hoods

## Single Lever Bolts



All dimensions are in mm.



### Technical Data

Specifications:	DIN 43652	Protection Class:	NEMA 4, NEMA 12, IP65
Temperature Range:	-40°C to +125°C	Material:	Powder-coated aluminum alloy

PG	Size of Entry		PG	Part Number		Complete the Installation: SKINTOP® Strain Relief, page 368			
	NPT	Metric		NPT	Metric	PG Nylon	PG Metal	Metric Nylon	Metric Metal
<b>Top Entry</b>									
21	3/4"	25	101219	101219NP	19121900*	53015050	52015750	53111030	53112030
29	1"	32	101119	101119NP	19111900*	53015060	52015760	53111040	53112040
<b>Side Entry</b>									
21	3/4"	25	101139	101139NP	19113900	53015050	52015750	53111030	53112030
29	1"	32	101239	101239NP	19123900	53015060	52015760	53111040	53112040

\* Metric top-entry hoods do not come with a neck.

### Approvals



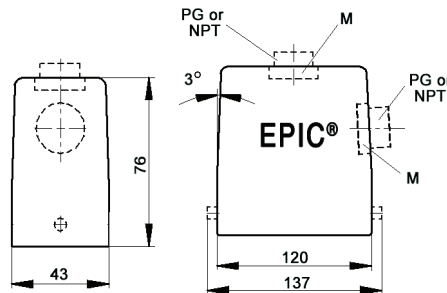
#### Complete the Installation



HB Dust Covers:  
page 415

# EPIC® HB 24 High Profile Hoods

## Single Lever Bolts



All dimensions are in mm.



### Technical Data

Specifications:	DIN 43652	Protection Class:	NEMA 4, NEMA 12, IP65
Temperature Range:	-40°C to +125°C	Material:	Powder-coated aluminum alloy

PG	Size of Entry		PG	Part Number		Complete the Installation: SKINTOP® Strain Relief, page 368			
	NPT	Metric		NPT	Metric*	PG Nylon	PG Metal	Metric Nylon	Metric Metal
<b>Top Entry</b>									
21	3/4"	25	701444	701444NP	79144400	53015050	52015750	53111030	53112030
29	1"	32	701446	701446NP	79144600	53015060	52015760	53111040	53112040
-	-	40	-	-	79144800	-	-	53111050	53112050
<b>Side Entry</b>									
21	3/4"	25	701544	701544NP	79154400	53015050	52015750	53111030	53112030
29	1"	32	701546	701546NP	79154600	53015060	52015760	53111040	53112040
-	-	40	-	-	79154800	-	-	53111050	53112050

\* Metric hoods do not come with a neck.

### Approvals



#### Complete the Installation

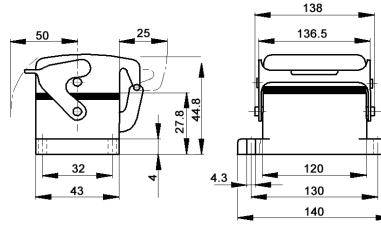
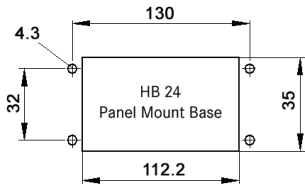


HB Dust Covers:  
page 415

Photographs are not to scale and are not true representations of the products in question. For current information go to our website. If not otherwise specified, all values relating to the product are nominal values.

# EPIC® HB 24 Panel Mount Bases

Single Lever



All dimensions are in mm.

Technical Data			
Specifications:	DIN 43652	Protection Class:	NEMA 4, NEMA 12, IP65
Temperature Range:	-40°C to +125°C	Material:	Powder-coated aluminum alloy

Description	Part Number
Panel Mount Base	10102900
Panel Mount Base with Dust Cover	10103900

**Complete the Installation**

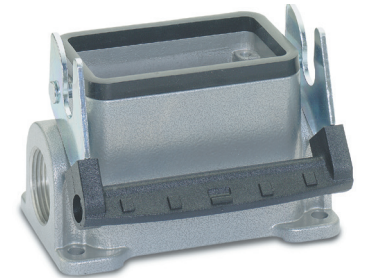
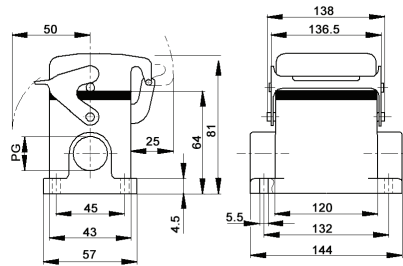
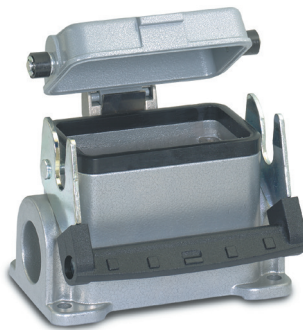
HB Dust Covers: page 415

**Approvals**



# EPIC® HB 24 Surface Mount Bases

Single Lever



All dimensions are in mm.

Technical Data			
Specifications:	DIN 43652	Protection Class:	NEMA 4, NEMA 12, IP65
Temperature Range:	-40°C to +125°C	Material:	Powder-coated aluminum alloy

PG	Size of Entry		PG	Part Number		Complete the Installation: SKINTOP® Strain Relief, page 368			
	NPT	Metric		NPT	Metric	PG Nylon	PG Metal	Metric Nylon	Metric Metal
<b>2 Entries</b>									
21	3/4"	25	101059	101059NP	19105900	53015050	52015750	53111030	53112030
<b>1 Entry</b>									
21	3/4"	25	101049	101049NP	19104900	53015050	52015750	53111030	53112030
<b>2 Entries with Dust Cover</b>									
21	3/4"	25	101099	101099NP	19109900	53015050	52015750	53111030	53112030
<b>1 Entry with Dust Cover</b>									
21	3/4"	25	101079	101079NP	19107900	53015050	52015750	53111030	53112040

**Approvals**



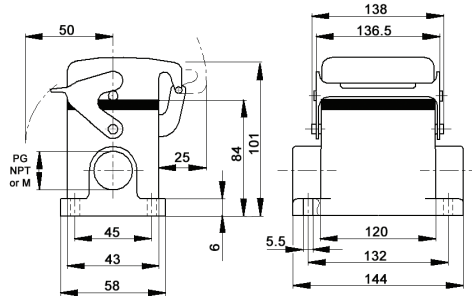
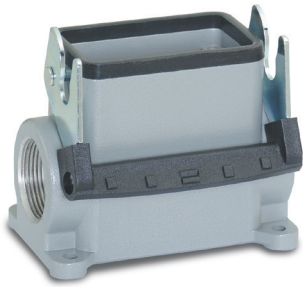
**Complete the Installation**

HB Dust Covers: page 415

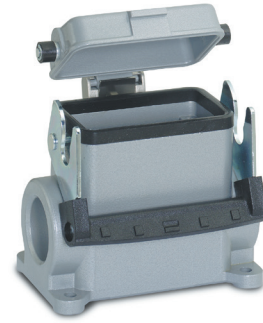
Photographs are not to scale and are not true representations of the products in question. For current information go to our website. If not otherwise specified, all values relating to the product are nominal values.

# EPIC® HB 24 High Profile Surface Mount Bases

## Single Lever



All dimensions are in mm.



### Technical Data

<b>Specifications:</b>	DIN 43652	<b>Protection Class:</b>	NEMA 4, NEMA 12, IP65
<b>Temperature Range:</b>	-40°C to +125°C	<b>Material:</b>	Powder-coated aluminum alloy

PG	Size of Entry		PG	Part Number			Complete the Installation: SKINTOP® Strain Relief, page 368			
	NPT	Metric		NPT	Metric	Metric	PG Nylon	PG Metal	Metric Nylon	Metric Metal
<b>2 Entries</b>										
21	3/4"	25	701612	701612NP	79161200	53015050	52015750	53111030	53112030	
29	1"	32	701614	701614NP	79161400	53015060	52015760	53111040	53112040	
<b>1 Entry</b>										
21	3/4"	25	701602	701602NP	79160200	53015050	52015750	53111030	53112030	
29	1"	32	701604R	701604NP	79160400	53015060	52015760	53111040	53112040	
<b>2 Entries with Dust Cover</b>										
21	3/4"	25	701652	701652NP	79165200	53015050	52015750	53111030	53112030	
29	1"	32	701654	701654NP	79165400	53015060	52015760	53111040	53112040	
<b>1 Entry with Dust Cover</b>										
21	3/4"	25	701642	701642NP	79164200	53015050	52015750	53111030	53112030	
29	1"	32	701644	701644NP	79164400	53015060	52015760	53111040	53112040	

### Approvals



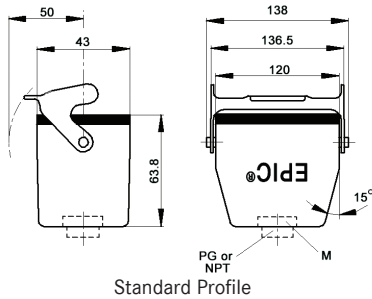
### Complete the Installation



HB Dust Covers:  
page 415

# EPIC® HB 24 Cable Coupler Hoods

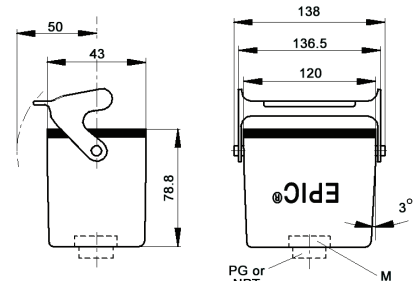
## Single Lever



Standard Profile



All dimensions are in mm.



High Profile

### Technical Data

<b>Specifications:</b>	DIN 43652	<b>Protection Class:</b>	NEMA 4, NEMA 12, IP65
<b>Temperature Range:</b>	-40°C to +125°C	<b>Material:</b>	Powder-coated aluminum alloy

PG	Size of Entry		PG	Part Number			Complete the Installation: SKINTOP® Strain Relief, page 368			
	NPT	Metric		NPT	Metric*	Metric	PG Nylon	PG Metal	Metric Nylon	Metric Metal
<b>Standard Profile</b>										
21	3/4"	25	101279	101279NP	19127900	53015050	52015750	53111030	53112030	
29	1"	32	101179	101179NP	19117900	53015060	52015760	53111040	53112040	
<b>High Profile</b>										
21	3/4"	25	701424	701424NP	79142400	53015050	52015750	53111030	53112030	
29	1"	32	701426	701426NP	79142600	53015060	52015760	53111040	53112040	

\* Metric hoods do not come with a neck.

### Approvals



### Complete the Installation

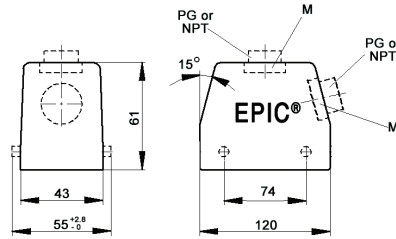


HB Dust Covers:  
page 415

Photographs are not to scale and are not true representations of the products in question. For current information go to our website. If not otherwise specified, all values relating to the product are nominal values.

# EPIC® HB 24 Standard Hoods

Double Lever Bolts



All dimensions are in mm.

<b>Technical Data</b>				
<b>Specifications:</b>	DIN 43652	<b>IP Protection Class:</b>	NEMA 4, NEMA 12, IP65	
<b>Temperature Range:</b>	-40°C to +125°C	<b>Material:</b>	Powder-coated aluminum alloy	

PG	Size of Entry		PG	Part Number		Complete the Installation: SKINTOP® Strain Relief, page 368			
	NPT	Metric		NPT	Metric	PG Nylon	PG Metal	Metric Nylon	Metric Metal
<b>Top Entry</b>									
21	3/4"	25	101210	101210NP	19121000*	53015050	52015750	53111030	53112030
—	—	25x2	—	—	44422019	—	—	53111030	53112030
29	1"	32	101110	101110NP	19111000*	53015060	52015760	53111040	53112040
—	—	32x2	—	—	44422020	—	—	53111040	53112040
<b>Side Entry</b>									
21	3/4"	25	101130	101130NP	19113000	53015050	52015750	53111030	53112030
29	1"	32	101230	101230NP	19123000	53015060	52015760	53111040	53112040

\* Metric top-entry hoods do not come with a neck.

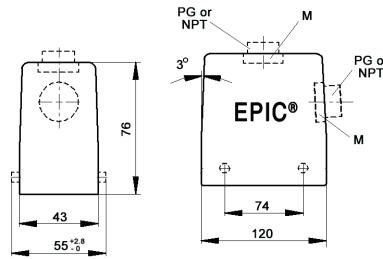
**Approvals**

**Complete the Installation**

HB Dust Covers: page 415

# EPIC® HB 24 High Profile Hoods

Double Lever Bolts



All dimensions are in mm.

\* Metric hoods do not come with a neck.

<b>Technical Data</b>				
<b>Specifications:</b>	DIN 43652	<b>IP Protection Class:</b>	NEMA 4, NEMA 12, IP65	
<b>Temperature Range:</b>	-40°C to +125°C	<b>Material:</b>	Powder-coated aluminum alloy	

PG	Size of Entry		PG	Part Number		Complete the Installation: SKINTOP® Strain Relief, page 368			
	NPT	Metric		NPT	Metric*	PG Nylon	PG Metal	Metric Nylon	Metric Metal
<b>Top Entry</b>									
21	3/4"	25	701504	701504NP	79150400	53015050	52015750	53111030	53112030
—	—	25x2	—	—	44422021	—	—	53111030	53112030
29	1"	32	701506	701506NP	79150600	53015060	52015760	53111040	53112040
—	—	32x2	—	—	79178500	—	—	53111040	53112040
—	—	40	—	—	79150800	—	—	53111050	53112050
<b>Side Entry</b>									
21	3/4"	25	701524	701524NP	79152400	53015050	52015750	53111030	53112030
29	1"	23	701526	701526NP	79152600	53015060	52015760	53111040	53112040
—	—	40	—	—	79152800	—	—	53111050	53112050

**Approvals**

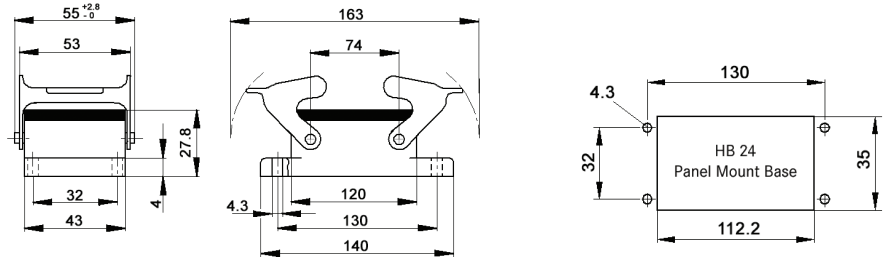
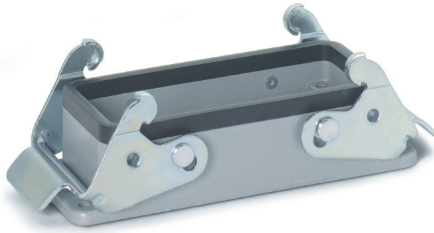
**Complete the Installation**

HB Dust Covers: page 415

Photographs are not to scale and are not true representations of the products in question. For current information go to our website. If not otherwise specified, all values relating to the product are nominal values.

# EPIC® HB 24 Panel Mount Bases

## Double Levers



All dimensions are in mm.

### Technical Data

<b>Specifications:</b>	DIN 43652	<b>Protection Class:</b>	NEMA 4, NEMA 12, IP65
<b>Temperature Range:</b>	-40°C to +125°C	<b>Material:</b>	Powder-coated aluminum alloy

Description	Part Number
Panel Mount Base	101020C0

**Complete the Installation**

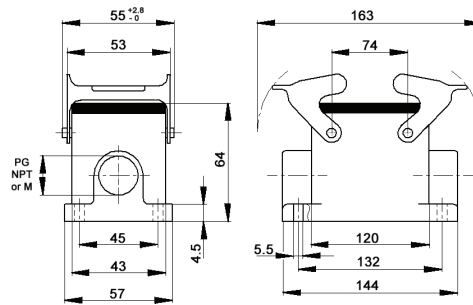
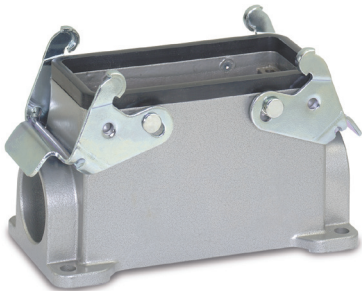
HB Dust Covers:  
page 415

### Approvals



# EPIC® HB 24 Surface Mount Bases

## Double Levers



All dimensions are in mm.

### Technical Data

<b>Specifications:</b>	DIN 43652	<b>Protection Class:</b>	NEMA 4, NEMA 12, IP65
<b>Temperature Range:</b>	-40°C to +125°C	<b>Material:</b>	Powder-coated aluminum alloy

PG	Size of Entry		PG	Part Number			Complete the Installation: SKINTOP® Strain Relief, page 368			
	NPT	Metric		NPT	Metric	Metric	PG Nylon	PG Metal	Metric Nylon	Metric Metal
<b>2 Entries</b>										
21	3/4"	25	101050	101050NP	19105000	53015050	52015750	53111030	53112030	
<b>1 Entry</b>										
21	3/4"	25	101040	101040NP	19104000	53015050	52015750	53111040	53112030	

### Approvals



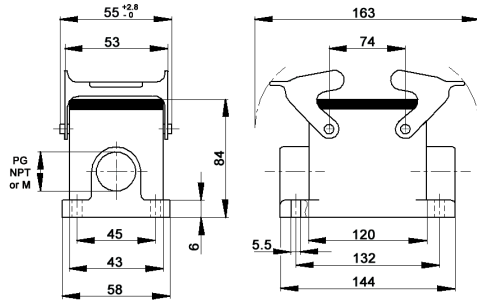
**Complete the Installation**

HB Dust Covers:  
page 415

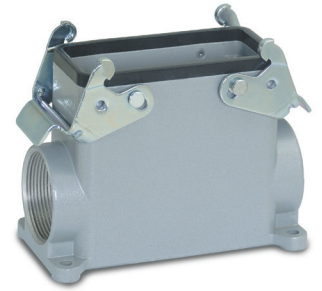
Photographs are not to scale and are not true representations of the products in question. For current information go to our website. If not otherwise specified, all values relating to the product are nominal values.

# EPIC® HB 24 High Profile Surface Mount Bases

Double Levers



All dimensions are in mm.



Technical Data			
Specifications:	DIN 43652	Protection Class:	NEMA 4, NEMA 12, IP65
Temperature Range:	-40°C to +125°C	Material:	Powder-coated aluminum alloy

PG	Size of Entry		PG	Part Number		Complete the Installation: SKINTOP® Strain Relief, page 368			
	NPT	Metric		NPT	Metric	PG Nylon	PG Metal	Metric Nylon	Metric Metal
<b>2 Entries</b>									
21	3/4"	25	701362	701362NP	79136200	53015050	52015750	53111030	53112030
29	1"	32	701364	701364NP	79136400	53015060	52015760	53111040	53112040
<b>1 Entry</b>									
21	3/4"	25	701352	701352NP	79135200	53015050	52015750	53111030	53112030
29	1"	32	701354	701354NP	79135400	53015060	52015760	53111040	53112040

## Approvals



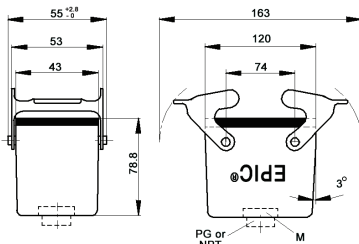
### Complete the Installation



HB Dust Covers: page 415

# EPIC® HB 24 Cable Coupler Hoods

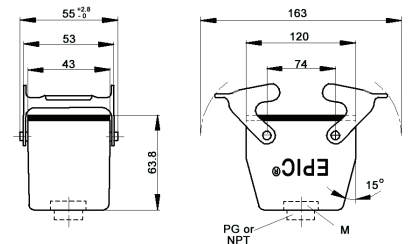
Double Levers



High Profile



All dimensions are in mm.



Standard Profile

Technical Data			
Specifications:	DIN 43652	Protection Class:	NEMA 4, NEMA 12, IP65
Temperature Range:	-40°C to +125°C	Material:	Powder-coated aluminum alloy

PG	Size of Entry		PG	Part Number		Complete the Installation: SKINTOP® Strain Relief, page 368			
	NPT	Metric		NPT	Metric*	PG Nylon	PG Metal	Metric Nylon	Metric Metal
<b>Standard Profile</b>									
21	3/4"	25	101270	101270NP	19127000	53015050	52015750	53111030	53112030
29	1"	32	101170	101170NP	19117000	53015060	52015760	53111040	53112040
<b>High Profile</b>									
21	3/4"	25	701404R	701404NP	79140400	53015050	52015750	53111030	53112030
29	1"	32	701406	701406NP	79140600	53015060	52015760	53111040	53112040

\* Metric hoods do not come with a neck.

## Approvals



### Complete the Installation

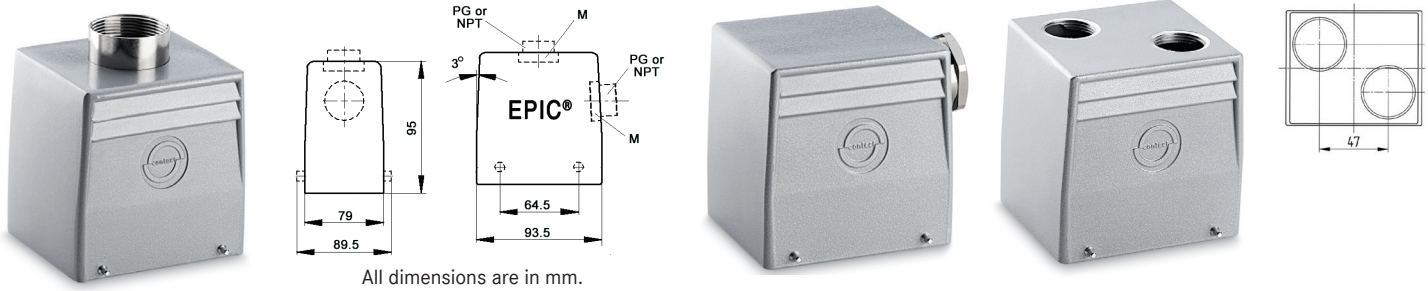


HB Dust Covers: page 415

Photographs are not to scale and are not true representations of the products in question. For current information go to our website. If not otherwise specified, all values relating to the product are nominal values.

# EPIC® HB 32 Standard Hoods

## Double Lever Bolts



All dimensions are in mm.

### Technical Data

<b>Specifications:</b>	DIN 43652	<b>Protection Class:</b>	NEMA 4, NEMA 12, IP65
<b>Temperature Range:</b>	-40°C to +125°C	<b>Material:</b>	Powder-coated aluminum alloy

PG	Size of Entry		PG	Part Number		Complete the Installation: SKINTOP® Strain Relief, page 368			
	NPT	Metric		NPT	Metric	PG Nylon	PG Metal	Metric Nylon	Metric Metal
<b>Top Entry</b>									
21	3/4"	—	101330	101330NP	—	53015050	52015750	—	—
—	—	25 x 2	—	—	44422022	—	—	53111030	53112030
29	1"	32	101340	101340NP	19134000	53015060	52015760	53111040	53112040
—	—	32 x 2	—	—	44422023	—	—	53111040	53112040
—	1 1/4"	40	—	101343NP	19134400	—	—	53111050	53112050
<b>Side Entry</b>									
21	3/4"	25	101350	101350NP	19135000	53015050	52015750	—	—
29	1"	32	101360	101360NP	19136000	53015060	52015760	53111040	53112040
—	—	40	—	—	19136200	—	—	53111050	53112050

### Approvals



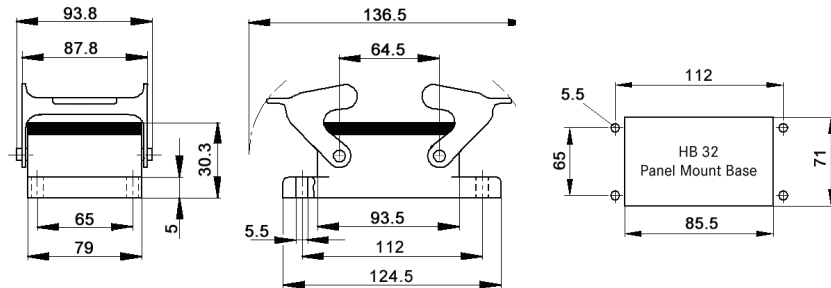
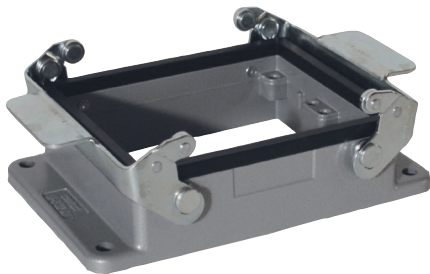
#### Complete the Installation



HB Dust Covers:  
page 415

# EPIC® HB 32 Panel Mount Bases

## Double Levers



All dimensions are in mm.

### Technical Data

<b>Specifications:</b>	DIN 43652	<b>Protection Class:</b>	NEMA 4, NEMA 12, IP65
<b>Temperature Range:</b>	-40°C to +125°C	<b>Material:</b>	Powder-coated aluminum alloy

Description	Part Number
Panel Mount Base	101320C0

#### Complete the Installation



HB Dust Covers:  
page 415

### Approvals

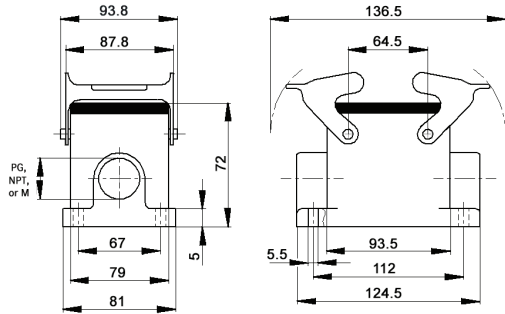


Photographs are not to scale and are not true representations of the products in question. For current information go to our website. If not otherwise specified, all values relating to the product are nominal values.

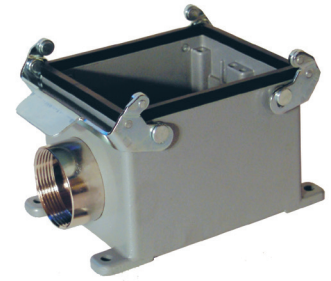


# EPIC® HB 32 Surface Mount Bases

## Double Levers



All dimensions are in mm.



Technical Data			
Specifications:	DIN 43652	Protection Class:	NEMA 4, NEMA 12, IP65
Temperature Range:	-40°C to +125°C	Material:	Powder-coated aluminum alloy

PG	Size of Entry		PG	Part Number		Complete the Installation: SKINTOP® Strain Relief, page 368			
	NPT	Metric		NPT	Metric	PG Nylon	PG Metal	Metric Nylon	Metric Metal
<b>2 Entries</b>									
29	1"	32	101380	101380NP	19138000	53015060	52015760	53111040	53112040
-	-	40	-	-	19146400	-	-	53111050	53112050
<b>1 Entry</b>									
29	1"	32	101670	101670NP	19137000	53015060	52015760	53111040	53112040
-	-	40	-	-	19145400	-	-	53111050	53112050

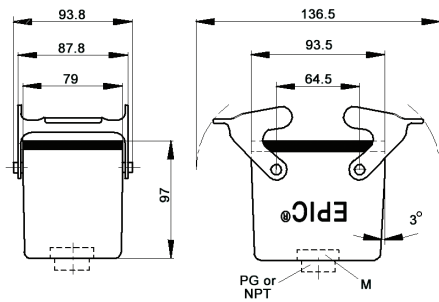
**Approvals**

**Complete the Installation**

HB Dust Covers: page 415

# EPIC® HB 32 Cable Coupler Hoods

## Double Levers



All dimensions are in mm.



Technical Data			
Specifications:	DIN 43652	Protection Class:	NEMA 4, NEMA 12, IP65
Temperature Range:	-40°C to +125°C	Material:	Powder-coated aluminum alloy

PG	Size of Entry		PG	Part Number		Complete the Installation: SKINTOP® Strain Relief, page 368			
	NPT	Metric		NPT	Metric	PG Nylon	PG Metal	Metric Nylon	Metric Metal
21	3/4"	-	101390	101390NP	-	53015050	52015750	-	-
29	1"	32	101395	101395NP	19139500	53015060	52015760	53111040	53112040

**Approvals**

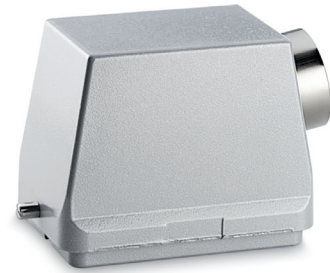
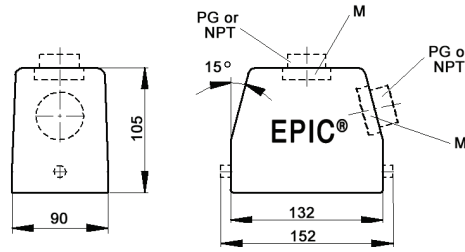
**Complete the Installation**

HB Dust Covers: page 415

Photographs are not to scale and are not true representations of the products in question. For current information go to our website. If not otherwise specified, all values relating to the product are nominal values.

# EPIC® HB 48 Standard Hoods

## Single Lever Bolts



All dimensions are in mm.

### Technical Data

Specifications:	DIN 43652	Protection Class:	NEMA 4, NEMA 12, IP65
Temperature Range:	-40°C to +125°C	Material:	Powder-coated aluminum alloy

PG	Size of Entry		PG	Part Number			Complete the Installation: SKINTOP® Strain Relief, page 368			
	NPT	Metric		NPT	Metric	Metric	PG Nylon	PG Metal	Metric Nylon	Metric Metal
<b>Top Entry</b>										
29	1"	32	101550	101550NP	19155000	53015060	52015760	53111040	53112040	
36	1 1/4"	40	101560	101560NP	19156000	53015070	52015765	53111050	53112050	
42	-	50	101570	-	19157000	53015080	52015766	53111060	53112060	
<b>Side Entry</b>										
29	1"	32	101580	101580NP	19158000	53015060	52015760	53111040	53112040	
36	1 1/4"	40	101590	101590NP	19159000	53015070	52015765	53111050	53112050	
42	-	50	101600	-	19160000	53015080	52015766	53111060	53112060	

### Approvals

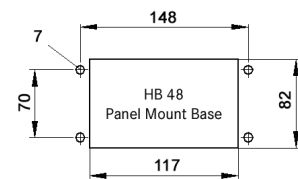
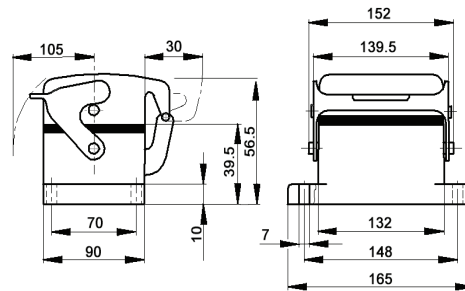


**Complete the Installation**

HB Dust Covers: page 415

# EPIC® HB 48 Panel Mount Bases

## Single Lever



All dimensions are in mm.

### Technical Data

Specifications:	DIN 43652	Protection Class:	NEMA 4, NEMA 12, IP65
Temperature Range:	-40°C to +125°C	Material:	Powder-coated aluminum alloy

Description	Part Number
Panel Mount Base	10161000
Panel Mount Base with Dust Cover: Hold Down Screw, No Dust Cover Bolts	10152000
Panel Mount Base with Dust Cover: Dust Cover Bolts	10152500

**Complete the Installation**

HB Dust Covers: page 415

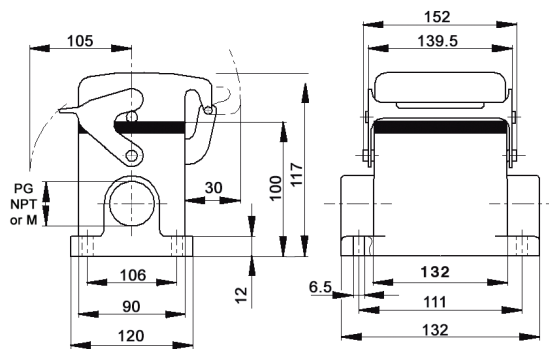
### Approvals



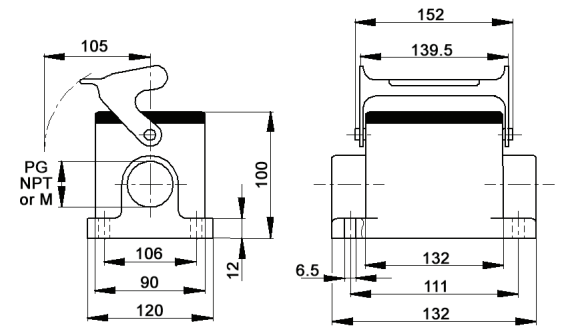
Photographs are not to scale and are not true representations of the products in question. For current information go to our website. If not otherwise specified, all values relating to the product are nominal values.

# EPIC® HB 48 Surface Mount Bases

Single Lever



All dimensions are in mm.



All dimensions are in mm.

## Technical Data

Specifications:	DIN 43652	Protection Class:	NEMA 4, NEMA 12, IP65
Temperature Range:	-40°C to +125°C	Material:	Powder-coated aluminum alloy

PG	Size of Entry		PG	Part Number		Complete the Installation: SKINTOP® Strain Relief, page 368			
	NPT	Metric		NPT	Metric	PG Nylon	PG Metal	Metric Nylon	Metric Metal
<b>2 Entries</b>									
29	1"	32	101660	101660NP	19166000	53015060	52015760	53111040	53112040
36	1 1/4"	40	101661	101661NP	19166100	53015070	52015765	53111050	53112050
<b>1 Entry</b>									
29	1"	32	101650	101650NP	19165000	53015060	52015760	53111040	53112040
36	1 1/4"	40	101651	101651NP	19165100	53015070	52015765	53111050	53112050
<b>2 Entries with Dust Cover</b>									
29	1"	32	101680	101680NP	19168000	53015060	52015760	53111040	53112040
36	1 1/4"	40	101681	101681NP	19168100	53015070	52015765	53111050	53112050
<b>1 Entry with Dust Cover</b>									
29	1"	32	101670	101670NP	19167000	53015060	52015760	53111040	53112040
36	1 1/4"	40	101671	101671NP	19167100	53015070	52015765	53111050	53112050

## Approvals



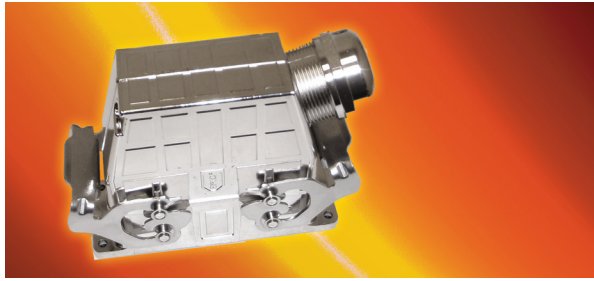
### Complete the Installation



HB Dust Covers:  
page 415

Photographs are not to scale and are not true representations of the products in question. For current information go to our website. If not otherwise specified, all values relating to the product are nominal values.

# EPIC® ULTRA HB Housings Overview



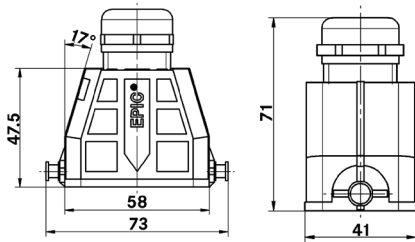
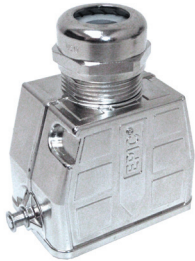
EPIC® ULTRA HB housings have a hard, electrically conductive, and corrosion-resistant nickel finish. Latching levers and bolts are stainless steel for strength and corrosion resistance. An integrated SKINTOP® gland in the hoods and surface mount bases provides a self-centering radial seal and strain relief. For electrically noisy environments where shielded cable is used, a SKINTOP® Brush insert provides a 360° low-resistance contact area with the cable shield. This configuration forms a conductive shell around the wire terminations that virtually eliminates electrical interference.

Housings				Plugs & Receptacles								
ULTRA	HBE	HA	HQ	STA	HEE	HBS	HBVE	HD	HDD	MC	Mixed Power	
HB 6	HBE 6	—	—	—	HEE 10	—	—	—	HDD 24	2 Modules	—	
HB 10	HBE 10	—	—	—	HEE 18	—	HBVE 3	—	HDD 42	3 Modules	—	
HB 16	HBE 16	—	—	—	HEE 32	HBS 6	HBVE 6	HD 40	HDD 72	5 Modules	4+0, 4+2	
HB 24	HBE 24	—	—	—	HEE 46	—	HBVE 10	HD 64	HDD 108	7 Modules	4+8	

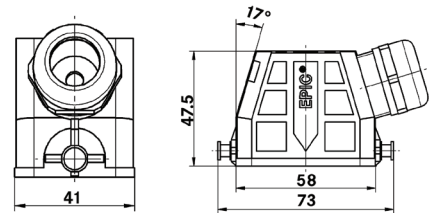
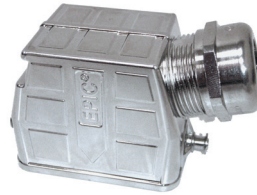
## Technical Data

<b>Specifications:</b>	DIN EN 60529, DIN EN 6988	<b>Material:</b>	
<b>Temperature Range:</b>	-40°C to +100°C	- Housing:	Nickel-plated die-cast zinc
<b>Protection Class:</b>	NEMA 4, NEMA 4X, NEMA 12, IP65	- Lever & bolts:	Stainless steel
<b>Corrosion Resistance:</b>	72-hour salt spray per DIN EN 60068-2 480-hour salt spray per DIN EN ISO 9227	- Sealing:	NBR
		- Gland cap nut:	Nickel-plated brass
		- Gland insert:	PA thermoplastic
		- Gland seal:	Special chloroprene elastomer

## EPIC® ULTRA HB 6 Hoods Single Lever Bolts



All dimensions are in mm.



All dimensions are in mm.

## Technical Data

<b>Specifications:</b>	DIN EN 60529, DIN EN 6988	<b>Corrosion Resistance:</b>	72-hour salt spray per DIN EN 60068-2 480-hour salt spray per DIN EN ISO 9227
<b>Temperature Range:</b>	-40°C to +100°C	<b>Material:</b>	see page 394
<b>Protection Class:</b>	NEMA 4, 4X, 12, IP65		

Part Number	Cable OD Range	Min. OD for Braided Shield	Brush
<b>Top Entry</b>			
70250200	6 - 13 mm	—	No
70250201	9 - 17 mm	—	No
70250202	9 - 17 mm	6 mm	Yes
<b>Side Entry</b>			
70250203	6 - 13 mm	—	No
70250204	9 - 17 mm	—	No
70250205	9 - 17 mm	6 mm	Yes

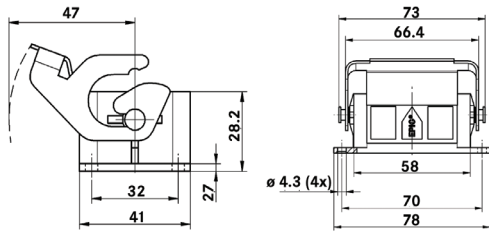
## Approvals



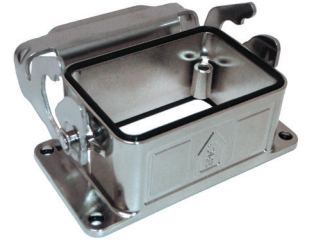
Photographs are not to scale and are not true representations of the products in question. For current information go to our website. If not otherwise specified, all values relating to the product are nominal values.

# EPIC® ULTRA HB 6 Panel Mount Bases

Single Lever



All dimensions are in mm.



### Technical Data

<b>Specifications:</b>	DIN EN 60529, DIN EN 6988	<b>Corrosion Resistance:</b>	72-hour salt spray per DIN EN 60068-2 480-hour salt spray per DIN EN ISO 9227
<b>Temperature Range:</b>	-40°C to +100°C	<b>Material:</b>	see page 394
<b>IP Protection Class:</b>	NEMA 4, 4X, 12, IP65		

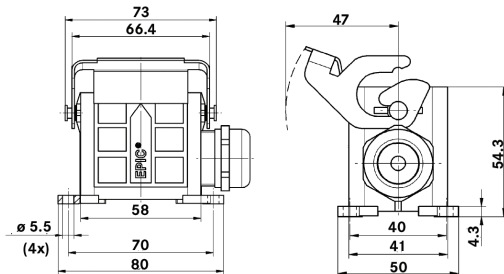
Description	Part Number
Panel Mount Base	70250206

### Approvals



# EPIC® ULTRA HB 6 Surface Mount Bases

Single Lever



All dimensions are in mm.



### Technical Data

<b>Specifications:</b>	DIN EN 60529, DIN EN 6988	<b>Corrosion Resistance:</b>	72-hour salt spray per DIN EN 60068-2 480-hour salt spray per DIN EN ISO 9227
<b>Temperature Range:</b>	-40°C to +100°C	<b>Material:</b>	see page 394
<b>IP Protection Class:</b>	NEMA 4, 4X, 12, IP65		

Part Number	Cable OD Range	Min. OD for Braided Shield	Brush
<b>1 Entry</b>			
70250207	6 - 13 mm	—	No
70250208	9 - 17 mm	—	No
70250209	9 - 17 mm	6 mm	Yes

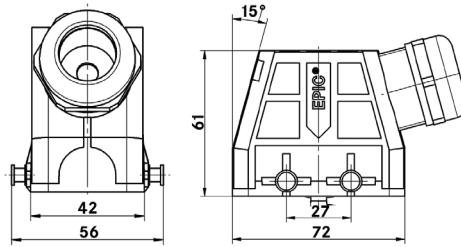
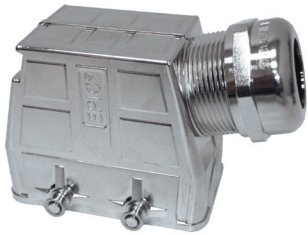
### Approvals



Photographs are not to scale and are not true representations of the products in question. For current information go to our website. If not otherwise specified, all values relating to the product are nominal values.

# EPIC® ULTRA HB 10 Hoods

## Double Lever Bolts



**Complete the Installation**



FLEXIMARK®  
ULTRA L Labels  
(10 sheets of 84):  
83252424

All dimensions are in mm.

**Technical Data**

<b>Specifications:</b>	DIN EN 60529, DIN EN 6988	<b>Corrosion Resistance:</b>	72-hour salt spray per DIN EN 60068-2 480-hour salt spray per DIN EN ISO 9227
<b>Temperature Range:</b>	-40°C to +100°C	<b>Material:</b>	see page 394
<b>Protection Class:</b>	NEMA 4, 4X, 12, IP65		

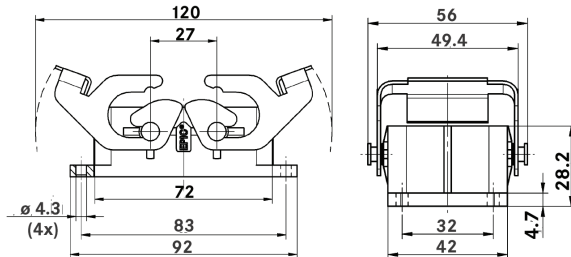
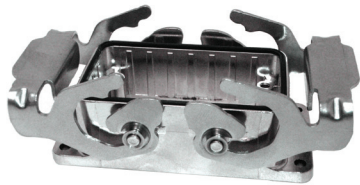
Part Number	Cable OD Range	Min. OD for Braided Shield	Brush
<b>Side Entry</b>			
70250210	6 - 13 mm	—	No
70250211	9 - 17 mm	—	No
70250212	9 - 17 mm	6 mm	Yes

**Approvals**



# EPIC® ULTRA HB 10 Panel Mount Bases

## Double Levers



All dimensions are in mm.

**Technical Data**

<b>Specifications:</b>	DIN EN 60529, DIN EN 6988	<b>Corrosion Resistance:</b>	72-hour salt spray per DIN EN 60068-2 480-hour salt spray per DIN EN ISO 9227
<b>Temperature Range:</b>	-40°C to +100°C	<b>Material:</b>	see page 394
<b>Protection Class:</b>	NEMA 4, 4X, 12, IP65		

Description	Part Number
Panel Mount Base	70250213

**Approvals**



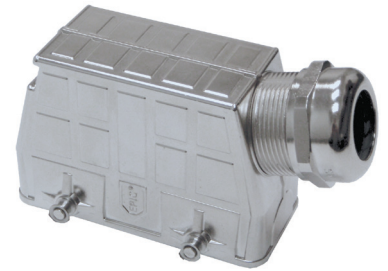
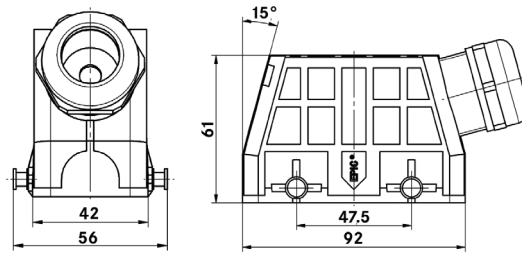
Photographs are not to scale and are not true representations of the products in question. For current information go to our website. If not otherwise specified, all values relating to the product are nominal values.

EPIC® ULTRA HB 16 Hoods  
Double Lever Bolts

Complete the Installation



FLEXIMARK®  
ULTRA L Labels  
(10 sheets of 84):  
83252424



All dimensions are in mm.

Technical Data

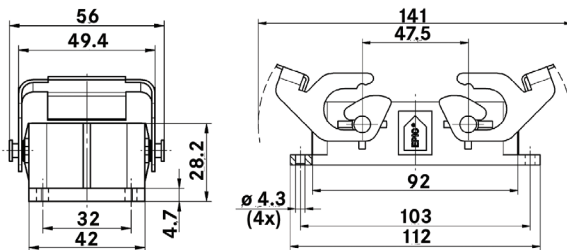
<b>Specifications:</b>	DIN EN 60529, DIN EN 6988	<b>Corrosion Resistance:</b>	72-hour salt spray per DIN EN 60068-2 480-hour salt spray per DIN EN ISO 9227
<b>Temperature Range:</b>	-40°C to +100°C	<b>Material:</b>	see page 394
<b>IP Protection Class:</b>	NEMA 4, 4X, 12, IP65		

Part Number	Cable OD Range	Min. OD for Braided Shield	Brush
<b>Side Entry</b>			
70250214	7 - 15 mm	—	No
70250215	11 - 21 mm	—	No
70250216	11 - 21 mm	8 mm	Yes

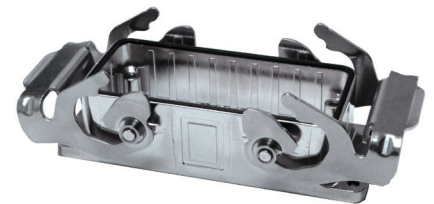
Approvals



EPIC® ULTRA HB 16 Panel Mount Bases  
Double Levers



All dimensions are in mm.



Technical Data

<b>Specifications:</b>	DIN EN 60529, DIN EN 6988	<b>Corrosion Resistance:</b>	72-hour salt spray per DIN EN 60068-2 480-hour salt spray per DIN EN ISO 9227
<b>Temperature Range:</b>	-40°C to +100°C	<b>Material:</b>	see page 394
<b>IP Protection Class:</b>	NEMA 4, 4X, 12, IP65		

Description	Part Number
Panel Mount Base	70250217

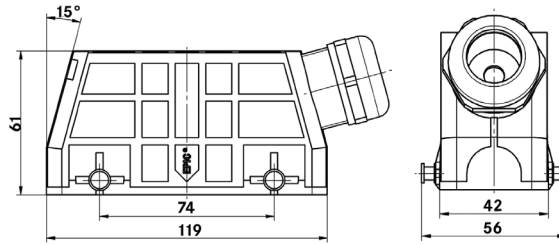
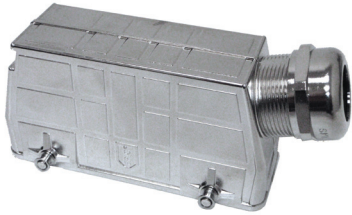
Approvals



Photographs are not to scale and are not true representations of the products in question.  
For current information go to our website. If not otherwise specified, all values relating to the product are nominal values.

# EPIC® ULTRA HB 24 Hoods

## Double Lever Bolts








All dimensions are in mm.

**Complete the Installation**



FLEXIMARK®  
ULTRA L Labels  
(10 sheets of 84):  
83252424

### Technical Data

 <b>Specifications:</b>	DIN EN 60529, DIN EN 6988	 <b>Corrosion Resistance:</b>	72-hour salt spray per DIN EN 60068-2 480-hour salt spray per DIN EN ISO 9227
 <b>Temperature Range:</b>	-40°C to +100°C	 <b>Material:</b>	see page 394
 <b>Protection Class:</b>	NEMA 4, 4X, 12, IP65		

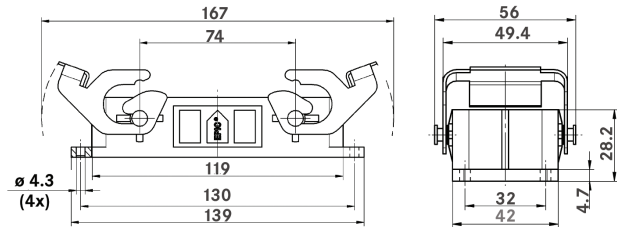
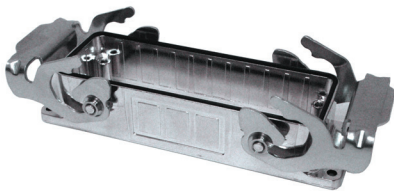
Part Number	Cable OD Range	Min. OD for Braided Shield	Brush
<b>Side Entry</b>			
70250219	7 - 15 mm	—	No
70250220	11 - 21 mm	—	No
70250221	11 - 21 mm	8 mm	Yes

### Approvals








# EPIC® ULTRA HB 24 Panel Mount Bases

## Double Levers



All dimensions are in mm.

### Technical Data

 <b>Specifications:</b>	DIN EN 60529, DIN EN 6988	 <b>Corrosion Resistance:</b>	72-hour salt spray per DIN EN 60068-2 480-hour salt spray per DIN EN ISO 9227
 <b>Temperature Range:</b>	-40°C to +100°C	 <b>Material:</b>	see page 394
 <b>Protection Class:</b>	NEMA 4, 4X, 12, IP65		

Description	Part Number
Panel Mount Base	70250222

### Approvals



Photographs are not to scale and are not true representations of the products in question.

For current information go to our website. If not otherwise specified, all values relating to the product are nominal values.



# EPIC® HA Housings Overview



EPIC® rectangular connectors comply with all applicable requirements of Underwriters Laboratory (UL) Standards 1977 and 498, VDE Standard 0110 for creepage and clearance distances, and VDE Standard 0627 for the connector design.

The recognized UL file number and Canadian Standards Association (CSA) for EPIC® connectors are UL #E75770 and CSA #LR53004-1.

EPIC® connectors meet IP65, NEMA 4, and NEMA 12 standards only when in the mated condition.

Housings Standard Gray	Plugs & Receptacles										
	HBE	HA	HQ	STA	HEE	HBS	HBVE	HD	HDD	MC	Mixed Power
HA 3/4	–	HA 3/4	HQ 5	STA 6	–	–	–	HD 7/8	–	–	–
HA 10	–	HA 10	–	STA 14	–	–	–	HD 15	–	–	–
HA 16	–	HA 16	–	STA 20	–	–	–	HD 25	–	–	–
HA 32	–	HA 32	–	STA 40	–	–	–	HD 50	–	–	–
HA 48	–	HA 48	–	–	–	–	–	–	–	–	–
HA 64	–	HA 64	–	–	–	–	–	–	–	–	–

### Technical Data

**Specifications:** DIN 43652, DIN 50262 (metric housings)

**Temperature Range:** -40°C to +125°C

**Protection Class:** NEMA 4, NEMA 12, IP65

**Material:**  
 - EPIC® HA 3/4:  
 - Gray metal:  
 - Gray or black plastic:  
 - EPIC® HA 10-64:

Powder-coated die-cast zinc  
 Thermoplastic flame-retardant material rated UL 94 V-0  
 Powder-coated aluminum alloy with zinc-plated steel locking levers and bolts

PG

NPT

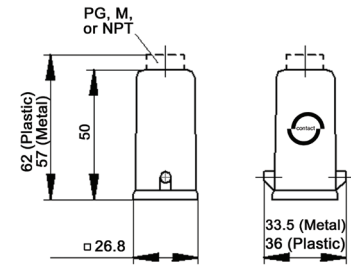
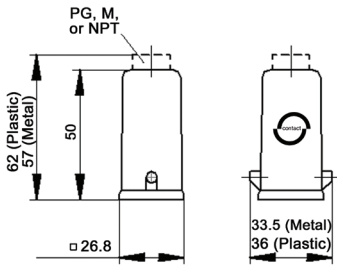
Metric



Photographs are not to scale and are not true representations of the products in question. For current information go to our website. If not otherwise specified, all values relating to the product are nominal values.

# EPIC® HA 3/4 Hoods

## Single Lever Bolts



All dimensions are in mm.

### Technical Data

<b>Specifications:</b>	DIN 43652, DIN 50262 (metric)	<b>IP Protection Class:</b>	NEMA 4, NEMA 12, IP65
<b>Temperature Range:</b>	-40°C to +125°C	<b>Material:</b>	Powder-coated aluminum alloy

PG	Size of Entry		Material	Part Number: Without Cable Gland			Part Number: With Cable Gland	
	NPT	Metric		PG	NPT	Metric	PG	Metric
<b>Top Entry</b>								
11	1/2"	20	Die-cast Zinc	10512100	105121NP	19512100	10426500	19426500
11	1/2"	20	Black Plastic	10425500	104255NP	19425500	10426700	—
11	1/2"	20	Gray Plastic	10426000	104260NP	19426000	10426400	—
<b>Side Entry</b>								
11	1/2"	20	Die-cast Zinc	10512300	105123NP	19512300	10427500	19427500
11	1/2"	20	Black Plastic	10427300	104273NP	19427300	10620600	—
11	1/2"	20	Gray Plastic	10427000	104270NP	19427000	10427100	—

### Approvals



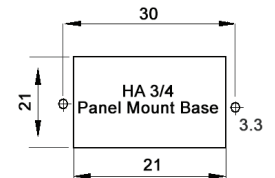
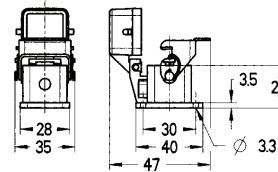
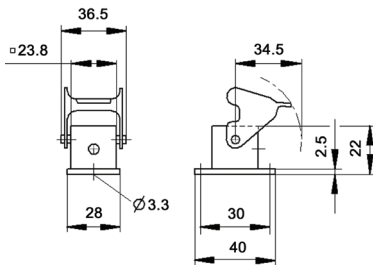
### Complete the Installation



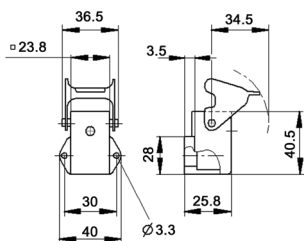
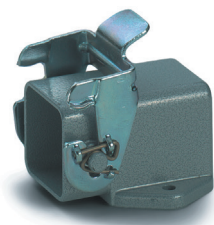
HA Dust Covers:  
page 415

# EPIC® HA 3/4 Panel Mount Bases

## Single Lever



All dimensions are in mm.



### Technical Data

<b>Specifications:</b>	DIN 43652, DIN 50262 (metric)
<b>Temperature Range:</b>	-40°C to +125°C
<b>IP Protection Class:</b>	NEMA 4, NEMA 12, IP65
<b>Material:</b>	Powder-coated aluminum alloy

### Complete the Installation



Dust Covers:  
page 415

### Approvals

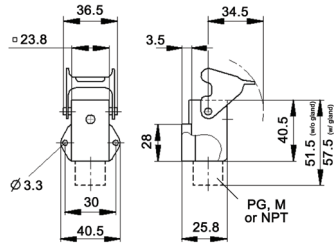


Description	Die-cast Zinc	Part Number Black Plastic	Gray Plastic
Panel Mount Base	10422500	10422200	10422000
Panel Mount Base with Dust Cover	44429015	—	—
Right-Angle Panel Mount Base	10423500	10423100	10423000

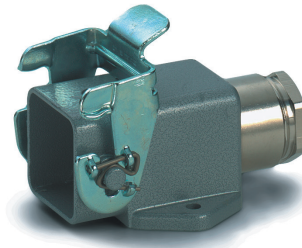
Photographs are not to scale and are not true representations of the products in question. For current information go to our website. If not otherwise specified, all values relating to the product are nominal values.

# EPIC® HA 3/4 Surface Mount Bases

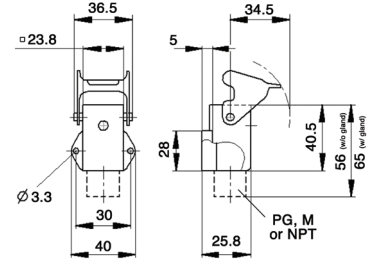
## Single Lever



Die-cast Zinc



All dimensions are in mm.



Gray Plastic

Technical Data			
Specifications:	DIN 43652, DIN 50262 (metric)	Protection Class:	NEMA 4, NEMA 12, IP65
Temperature Range:	-40°C to +125°C	Material:	Powder-coated aluminum alloy

PG	Size of Entry		Material	Part Number: Without Cable Gland			Part Number: With Cable Gland	
	NPT	Metric		PG	NPT	Metric	PG	Metric
11	1/2"	20	Die-cast Zinc	10512700	105127NP	19512700	10424500	19424500
11	1/2"	20	Gray Plastic	10424000	104240NP	—	10424200	19421900

### Approvals

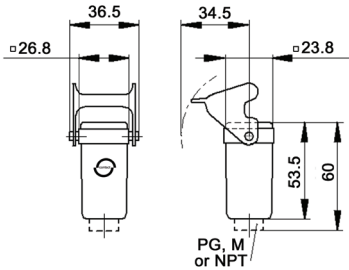


**Complete the Installation**

HA Dust Covers:  
page 415

# EPIC® HA 3/4 Cable Coupler Hoods

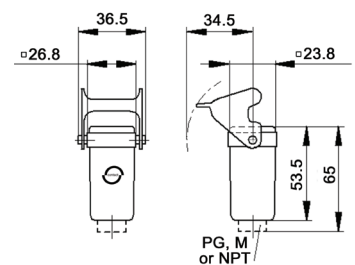
## Single Lever



Die-cast Zinc



All dimensions are in mm.



Black or Gray Plastic

Technical Data			
Specifications:	DIN 43652, DIN 50262 (metric)	Protection Class:	NEMA 4, NEMA 12, IP65
Temperature Range:	-40°C to +125°C	Material:	Powder-coated aluminum alloy

PG	Size of Entry		Material	Part Number: Without Cable Gland			With Cable Gland
	NPT	Metric		PG	NPT	Metric	PG
11	1/2"	20	Die-cast Zinc	10512900	105129NP	19512900	104295
11	1/2"	20	Black Plastic	10429200	104292NP	19429200	106203
11	1/2"	20	Gray Plastic	10429000	104290NP	19429000	104291

### Approvals



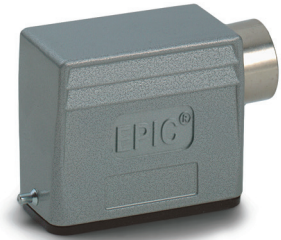
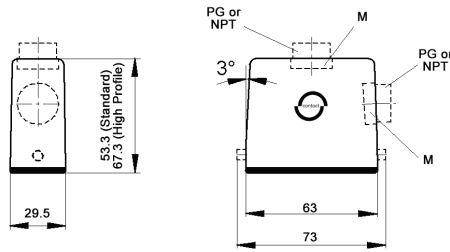
**Complete the Installation**

HA Dust Covers:  
page 415

Photographs are not to scale and are not true representations of the products in question.  
For current information go to our website. If not otherwise specified, all values relating to the product are nominal values.

# EPIC® HA 10 Standard & High Profile Hoods

## Single Lever Bolts



All dimensions are in mm.

### Technical Data

<b>Specifications:</b>	DIN 43652, DIN 50262 (metric)	<b>Protection Class:</b>	NEMA 4, NEMA 12, IP65
<b>Temperature Range:</b>	-40°C to +125°C	<b>Material:</b>	Powder-coated aluminum alloy

Size of Entry	PG		Part Number	Metric*	Complete the Installation: SKINTOP® Strain Relief, page 368				
	NPT	Metric			PG Nylon	PG Metal	Metric Nylon	Metric Metal	
<b>Standard Profile: Top Entry</b>									
13	1/2"	20	104460	104460NP	19446000	53015030	52015730	53111020	53112020
16	1/2"	25	104461	104461NP	19446100	53015040	52015740	53111030	53112030
<b>Standard Profile: Side Entry</b>									
16	1/2"	20	104450	104450NP	19445000	53015040	52015740	53111020	53112020
21	3/4"	25	104455	104455NP	19445500	53015050	52015750	53111030	53112030
<b>High Profile: Top Entry</b>									
16	1/2"	20	704602	704602NP	79460200	53015040	52015740	53111020	53112020
21	3/4"	25	704604	704604NP	79460400	53015040	52015740	53111020	53112020
<b>High Profile: Side Entry</b>									
16	1/2"	20	704622	704622NP	79462200	53015040	52015740	53111020	53112020
21	3/4"	25	704624	704624NP	79462400	53015050	52015750	53111030	53112030

\* Top entry metric and high profile metric hoods do not come with a neck

### Approvals



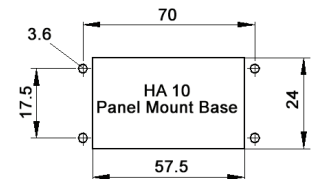
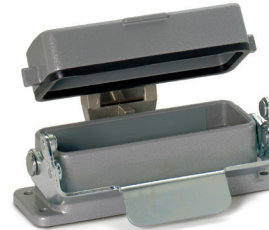
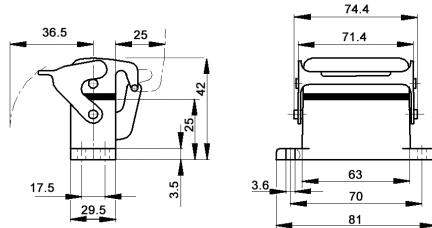
### Complete the Installation



HA Dust Covers:  
page 415

# EPIC® HA 10 Panel Mount Bases

## Single Lever



All dimensions are in mm.

### Technical Data

<b>Specifications:</b>	DIN 43652, DIN 50262 (metric)	<b>Protection Class:</b>	NEMA 4, NEMA 12, IP65
<b>Temperature Range:</b>	-40°C to +125°C	<b>Material:</b>	Powder-coated aluminum alloy

Description	Part Number
Panel Mount Base	104420C0
Panel Mount Base with Dust Cover	704440C0

### Complete the Installation



HA Dust Covers:  
page 415

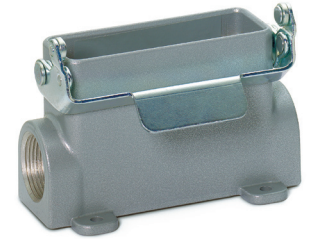
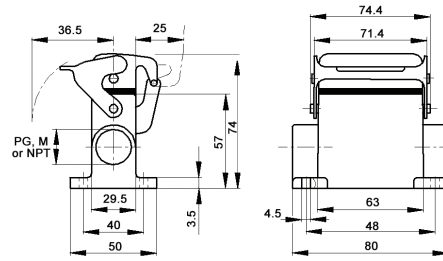
### Approvals



Photographs are not to scale and are not true representations of the products in question. For current information go to our website. If not otherwise specified, all values relating to the product are nominal values.

# EPIC® HA 10 Surface Mount Bases

Single Lever



All dimensions are in mm.

<b>Technical Data</b>				
<b>Specifications:</b>	DIN 43652, DIN 50262 (metric)	<b>IP Protection Class:</b>	NEMA 4, NEMA 12, IP65	
<b>Temperature Range:</b>	-40°C to +125°C	<b>Material:</b>	Powder-coated aluminum alloy	

PG	Size of Entry		PG	Part Number		Complete the Installation: SKINTOP® Strain Relief, page 368			
	NPT	Metric		NPT	Metric	PG Nylon	PG Metal	Metric Nylon	Metric Metal
<b>2 Entries</b>									
16	1/2"	20	104501	104501NP	19450100	53015040	52015740	53111020	53112020
21	3/4"	25	104500	104500NP	19450000	53015050	52015750	53111030	53112030
<b>1 Entry</b>									
16	1/2"	20	104481	104481NP	19448100	53015040	52015740	53111020	53112020
21	3/4"	25	104480	104480NP	19448000	53015050	52015750	53111030	53112030
<b>2 Entries with Dust Cover</b>									
16	1/2"	20	704562	704562NP	79456200	53015040	52015740	53111020	53112020
21	3/4"	25	704564	704564NP	79456400	53015050	52015750	53111030	53112030
<b>1 Entry with Dust Cover</b>									
16	1/2"	20	704552	704552NP	79455200	53015040	52015740	53111020	53112030
21	3/4"	25	704554	704554NP	79455400	53015050	52015750	53111030	53112030

## Approvals



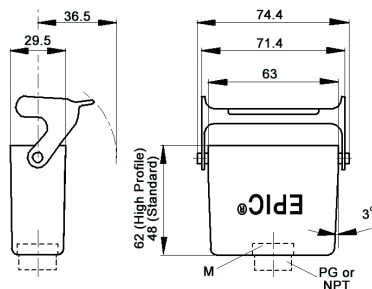
### Complete the Installation



HA Dust Covers:  
page 415

# EPIC® HA 10 Cable Coupler Hoods

Single Lever



All dimensions are in mm.



<b>Technical Data</b>				
<b>Specifications:</b>	DIN 43652, DIN 50262 (metric)	<b>IP Protection Class:</b>	NEMA 4, NEMA 12, IP65	
<b>Temperature Range:</b>	-40°C to +125°C	<b>Material:</b>	Powder-coated aluminum alloy	

PG	Size of Entry		PG	Part Number		Complete the Installation: SKINTOP® Strain Relief, page 368			
	NPT	Metric		NPT	Metric*	PG Nylon	PG Metal	Metric Nylon	Metric Metal
<b>Standard Profile</b>									
13	1/2"	20	104390	104390NP	19439000	53015030	52015700	53111020	53112020
16	1/2"	25	704500	704500NP	79450000	53015040	52015740	53111030	53112030
<b>High Profile</b>									
21	3/4"	25	704504	704504NP	79450400	53015050	52015750	53111030	53112030

\* Metric hoods do not come with a neck

## Approvals



### Complete the Installation

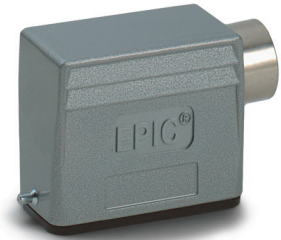
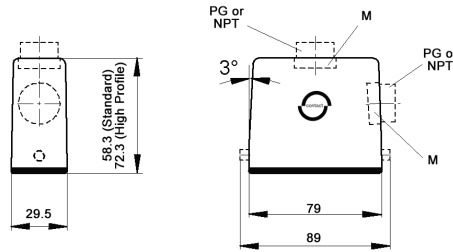


HA Dust Covers:  
page 415

Photographs are not to scale and are not true representations of the products in question. For current information go to our website. If not otherwise specified, all values relating to the product are nominal values.

# EPIC® HA 16 Standard & High Profile Hoods

## Single Lever Bolts



All dimensions are in mm.

### Technical Data

<b>Specifications:</b>	DIN 43652, DIN 50262 (metric)	<b>Protection Class:</b>	NEMA 4, NEMA 12, IP65
<b>Temperature Range:</b>	-40°C to +125°C	<b>Material:</b>	Powder-coated aluminum alloy

PG	Size of Entry		PG	Part Number			Complete the Installation: SKINTOP® Strain Relief, page 368			
	NPT	Metric		NPT	Metric*	Metric*	PG Nylon	PG Metal	Metric Nylon	Metric Metal
<b>Standard Profile: Top Entry</b>										
16	1/2"	20	105650	105650NP	19565000	53015040	52015740	53111020	53112020	
21	3/4"	25	105652	105652NP	19565300	53015050	52015750	53111030	53112030	
<b>Standard Profile: Side Entry</b>										
16	1/2"	20	105640	105640NP	19564000	53015040	52015740	53111020	53112020	
21	3/4"	25	105645	105645NP	19564500	53015050	52015750	53111030	53112030	
<b>High Profile: Top Entry</b>										
16	1/2"	20	704902	704902NP	79490200	53015040	52015740	53111020	53112020	
21	3/4"	25	704904	704904NP	79490400	53015050	52015750	53111030	53112030	
<b>High Profile: Side Entry</b>										
16	1/2"	20	704922	704922NP	79492200	53015040	52015740	53111020	53112020	
21	3/4"	25	704924	704924NP	79492400	53015050	52015750	53111030	53112030	

\* Top entry metric and high profile metric hoods do not come with a neck

### Approvals



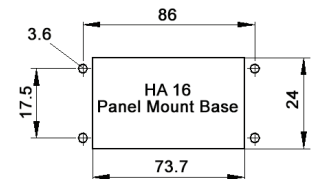
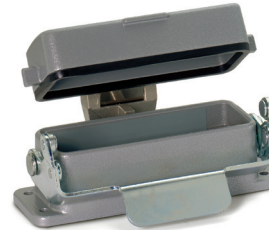
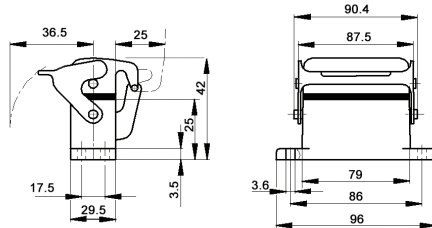
### Complete the Installation



HA Dust Covers:  
page 415

# EPIC® HA 16 Panel Mount Bases

## Single Lever



All dimensions are in mm.

### Technical Data

<b>Specifications:</b>	DIN 43652, DIN 50262 (metric)	<b>Protection Class:</b>	NEMA 4, NEMA 12, IP65
<b>Temperature Range:</b>	-40°C to +125°C	<b>Material:</b>	Powder-coated aluminum alloy

Description	Part Number
Panel Mount Base	104620C0
Panel Mount Base with Dust Cover	704740C0

### Complete the Installation



HA Dust Covers:  
page 415

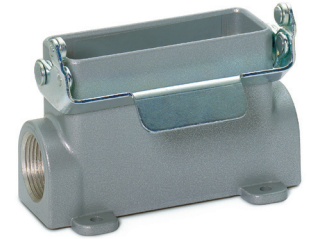
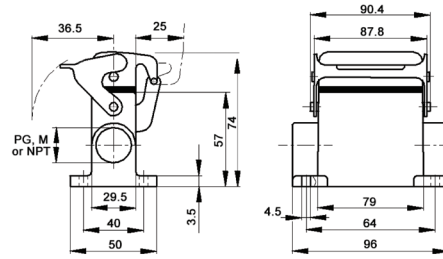
### Approvals



Photographs are not to scale and are not true representations of the products in question. For current information go to our website. If not otherwise specified, all values relating to the product are nominal values.

# EPIC® HA 16 Surface Mount Bases

Single Lever



All dimensions are in mm.

<b>Technical Data</b>				
<b>Specifications:</b>	DIN 43652, DIN 50262 (metric)	<b>IP Protection Class:</b>	NEMA 4, NEMA 12, IP65	
<b>Temperature Range:</b>	-40°C to +125°C	<b>Material:</b>	Powder-coated aluminum alloy	

PG	Size of Entry		PG	Part Number		Complete the Installation: SKINTOP® Strain Relief, page 368			
	NPT	Metric		NPT	Metric	PG Nylon	PG Metal	Metric Nylon	Metric Metal
<b>2 Entries</b>									
16	1/2"	20	105681	105681NP	19568100	53015040	52015740	53111020	53112020
21	3/4"	25	105680	105680NP	19568000	53015050	52015750	53111030	53112030
<b>1 Entry</b>									
16	1/2"	20	105671	105671NP	19567100	53015040	52015740	53111020	53112020
21	3/4"	25	105670	105670NP	19567000	53015050	52015750	53111030	53112030
<b>2 Entries with Dust Cover</b>									
16	1/2"	20	704862	704862NP	79486200	53015040	52015740	53111020	53112020
—	—	25	—	—	79486400	—	—	53111030	53112030
<b>1 Entry with Dust Cover</b>									
16	1/2"	20	704852	704852NP	79485200	53015040	52015740	53111020	53112030
21	3/4"	25	704854	704854NP	79485400	53015050	52015750	53111030	53112030

## Approvals



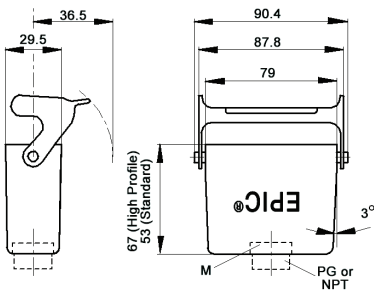
### Complete the Installation



HA Dust Covers:  
page 415

# EPIC® HA 16 Cable Coupler Hoods

Single Lever



All dimensions are in mm.



<b>Technical Data</b>				
<b>Specifications:</b>	DIN 43652, DIN 50262 (metric)	<b>IP Protection Class:</b>	NEMA 4, NEMA 12, IP65	
<b>Temperature Range:</b>	-40°C to +125°C	<b>Material:</b>	Powder-coated aluminum alloy	

PG	Size of Entry		PG	Part Number		Complete the Installation: SKINTOP® Strain Relief, page 368			
	NPT	Metric		NPT	Metric*	PG Nylon	PG Metal	Metric Nylon	Metric Metal
<b>Standard Profile</b>									
16	1/2"	20	105630	105630NP	19563000	53015040	52015740	53111020	53112020
—	—	25	—	—	19563200	—	—	53111030	53112030
<b>High Profile</b>									
16	1/2"	20	704802	704802NP	79480200	53015040	52015740	53111020	53112020
21	3/4"	25	704804	704804NP	79480400	—	—	53111030	53112030

\* Metric hoods do not come with a neck

## Approvals



### Complete the Installation

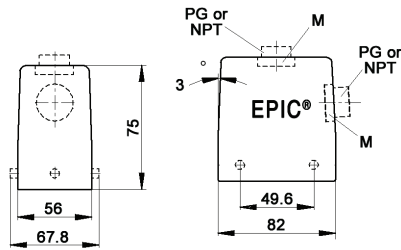


HA Dust Covers:  
page 415

Photographs are not to scale and are not true representations of the products in question. For current information go to our website. If not otherwise specified, all values relating to the product are nominal values.

# EPIC® HA 32 Standard Hoods

## Double Lever Bolts



All dimensions are in mm.



### Technical Data

<b>Specifications:</b>	DIN 43652, DIN 50262 (metric)	<b>IP Protection Class:</b>	NEMA 4, NEMA 12, IP65
<b>Temperature Range:</b>	-40°C to +125°C	<b>Material:</b>	Powder-coated aluminum alloy

PG	Size of Entry		PG	Part Number		Complete the Installation: SKINTOP® Strain Relief, page 368			
	NPT	Metric		NPT	Metric*	PG Nylon	PG Metal	Metric Nylon	Metric Metal
<b>Top Entry</b>									
21	3/4"	25	105820	105820NP	19582000	53015050	52015750	53111030	53112030
29	1"	32	105830	105830NP	19583000	53015060	52015760	53111040	53112040
-	-	40	-	-	79520600	-	-	53111050	53112050
<b>Side Entry</b>									
21	3/4"	25	105760	105760NP	19576000	53015050	52015750	53111030	53112030
29	1"	32	105770	105770NP	19577000	53015060	52015760	53111040	53112040
-	-	40	-	-	19577500	-	-	53111050	53112050

\* Metric hoods do not come with a neck

### Approvals



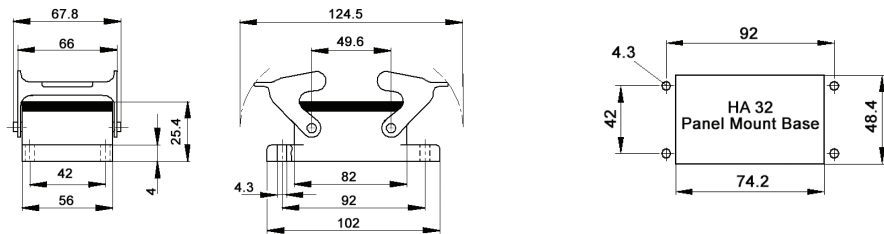
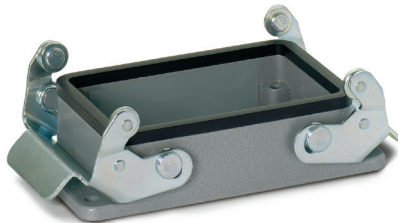
#### Complete the Installation



HA Dust Covers:  
page 415

# EPIC® HA 32 Panel Mount Bases

## Double Levers



All dimensions are in mm.

### Technical Data

<b>Specifications:</b>	DIN 43652, DIN 50262 (metric)	<b>IP Protection Class:</b>	NEMA 4, NEMA 12, IP65
<b>Temperature Range:</b>	-40°C to +125°C	<b>Material:</b>	Powder-coated aluminum alloy

Description	Part Number
Panel Mount Base	104720C0

#### Complete the Installation



HA Dust Covers:  
page 415

### Approvals

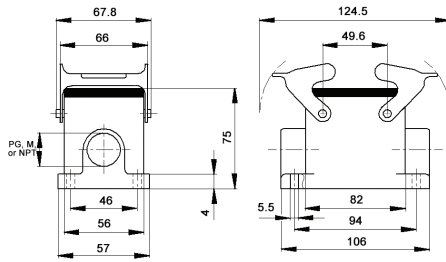


Photographs are not to scale and are not true representations of the products in question. For current information go to our website. If not otherwise specified, all values relating to the product are nominal values.

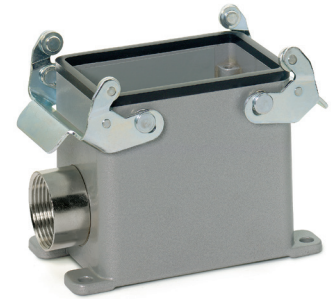


# EPIC® HA 32 Surface Mount Bases

## Double Levers



All dimensions are in mm.



<b>Technical Data</b>				
<b>Specifications:</b>	DIN 43652, DIN 50262 (metric)	<b>IP Protection Class:</b>	NEMA 4, NEMA 12, IP65	
<b>Temperature Range:</b>	-40°C to +125°C	<b>Material:</b>	Powder-coated aluminum alloy	

PG	Size of Entry		PG	Part Number		Complete the Installation: SKINTOP® Strain Relief, page 368			
	NPT	Metric		NPT	Metric*	PG Nylon	PG Metal	Metric Nylon	Metric Metal
<b>2 Entries</b>									
21	3/4"	25	104820	104820NP	19482000	53015050	52015750	53111030	53112030
29	1"	32	104821	104821NP	19482100	53015060	52015760	53111040	53112040
-	-	40	-	-	79506800	-	-	53111050	53112050
<b>1 Entry</b>									
21	3/4"	25	104740	104740NP	19474000	53015050	52015750	53111030	53112030
29	1"	32	104741	104741NP	19474100	53015060	52015760	53111040	53112040

\* Metric bases do not come with a neck

**Approvals**

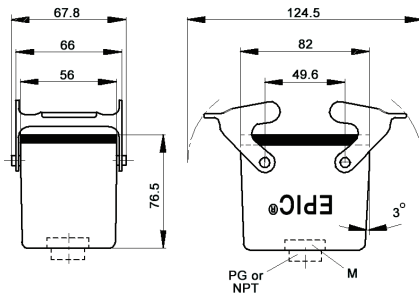
**RoHS** ✓

**Complete the Installation**

 HA Dust Covers: page 415

# EPIC® HA 32 Cable Coupler Hoods

## Double Levers



All dimensions are in mm.



<b>Technical Data</b>				
<b>Specifications:</b>	DIN 43652, DIN 50262 (metric)	<b>IP Protection Class:</b>	NEMA 4, NEMA 12, IP65	
<b>Temperature Range:</b>	-40°C to +125°C	<b>Material:</b>	Powder-coated aluminum alloy	


PG	Size of Entry		PG	Part Number		Complete the Installation: SKINTOP® Strain Relief, page 368			
	NPT	Metric		NPT	Metric*	PG Nylon	PG Metal	Metric Nylon	Metric Metal
<b>Standard Profile</b>									
21	3/4"	25	105880	105880NP	19588000	53015050	52015750	53111030	53112030
29	1"	32	105885	105885NP	19588500	53015060	52015760	53112030	53112040

\* Metric hoods do not come with a neck

**Approvals**

**RoHS** ✓

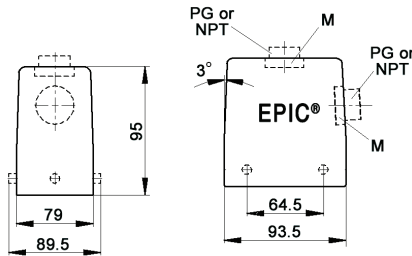
**Complete the Installation**

 HA Dust Covers: page 415

Photographs are not to scale and are not true representations of the products in question. For current information go to our website. If not otherwise specified, all values relating to the product are nominal values.

# EPIC® HA 48 Standard Hoods

Double Lever Bolts



All dimensions are in mm.



## Technical Data

<b>Specifications:</b>	DIN 43652, DIN 50262 (metric)	<b>IP Protection Class:</b>	NEMA 4, NEMA 12, IP65
<b>Temperature Range:</b>	-40°C to +125°C	<b>Material:</b>	Powder-coated aluminum alloy

PG	Size of Entry		PG	Part Number		Complete the Installation: SKINTOP® Strain Relief, page 368			
	NPT	Metric		NPT	Metric*	PG Nylon	PG Metal	Metric Nylon	Metric Metal
<b>Top Entry</b>									
29	1"	32	106318	106318NP	19631800	53015060	52015760	53111040	53112040
—	—	40	—	—	19636600	—	—	53111050	53112050
<b>Side Entry</b>									
29	1"	32	106308	106308NP	19630800	53015060	52015760	53111040	53112040
—	—	40	—	—	19635600	—	—	53111050	53112050

\* Metric hoods do not come with a neck

## Approvals



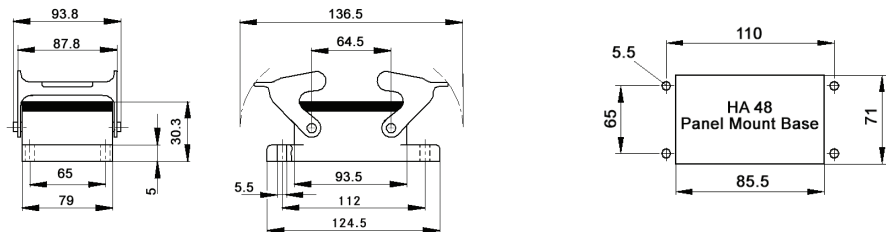
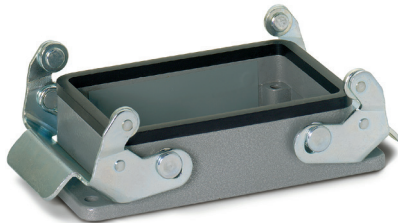
### Complete the Installation



HA Dust Covers:  
page 415

# EPIC® HA 48 Panel Mount Bases

Double Levers



All dimensions are in mm.

## Technical Data

<b>Specifications:</b>	DIN 43652, DIN 50262 (metric)	<b>IP Protection Class:</b>	NEMA 4, NEMA 12, IP65
<b>Temperature Range:</b>	-40°C to +125°C	<b>Material:</b>	Powder-coated aluminum alloy

Description	Part Number
Panel Mount Base	106255C0

### Complete the Installation



HA Dust Covers:  
page 415

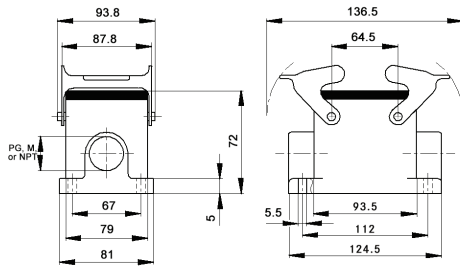
## Approvals



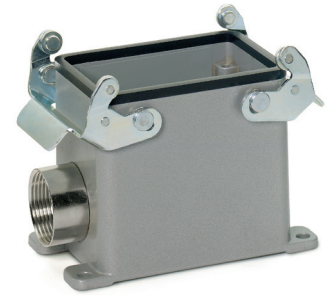
Photographs are not to scale and are not true representations of the products in question. For current information go to our website. If not otherwise specified, all values relating to the product are nominal values.

# EPIC® HA 48 Surface Mount Bases

## Double Levers



All dimensions are in mm.



<b>Technical Data</b>				
<b>Specifications:</b>	DIN 43652, DIN 50262 (metric)	<b>IP Protection Class:</b>	NEMA 4, NEMA 12, IP65	
<b>Temperature Range:</b>	-40°C to +125°C	<b>Material:</b>	Powder-coated aluminum alloy	

Size of Entry	PG		Part Number	Complete the Installation: SKINTOP® Strain Relief, page 368					
	NPT	Metric		PG Nylon	PG Metal	Metric Nylon	Metric Metal		
<b>2 Entries</b>									
—	—	40	—	—	—	53111050	53112050		
<b>1 Entry</b>									
29	1"	32	106338	106338NP	19633800	53015060	52015760	53111040	53112040
—	—	40	—	—	19638600	—	—	53111050	53112050

\* Metric bases do not come with a neck

**Approvals**

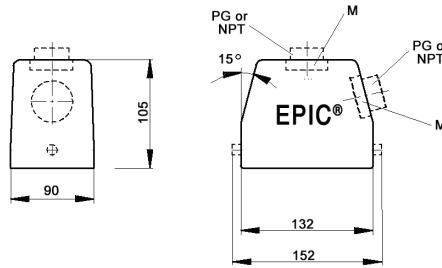
**RoHS** ✓

**Complete the Installation**

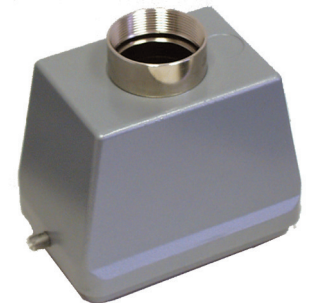
 HA Dust Covers: page 415

# EPIC® HA 64 Standard Hoods

## Single Lever Bolts



All dimensions are in mm.



<b>Technical Data</b>				
<b>Specifications:</b>	DIN 43652, DIN 50262 (metric)	<b>IP Protection Class:</b>	NEMA 4, NEMA 12, IP65	
<b>Temperature Range:</b>	-40°C to +125°C	<b>Material:</b>	Powder-coated aluminum alloy	


Size of Entry	PG		Part Number	Complete the Installation: SKINTOP® Strain Relief, page 368					
	NPT	Metric		PG Nylon	PG Metal	Metric Nylon	Metric Metal		
<b>Top Entry</b>									
29	1"	32	101550HA	101550NP-HA	191550HA	53015060	52015760	53111040	53112040
36	1 1/4"	40	101560HA	101560NP-HA	191560HA	53015070	52015765	53111050	53112050
42	1 1/2"	50	101570HA	—	191570HA	53015080	52015766	53111060	53112060
<b>Side Entry</b>									
29	1"	32	101580HA	101580NP-HA	191580HA	53015060	52015760	53111040	53112040
36	1 1/4"	40	101590HA	101590NP-HA	191590HA	53015070	52015765	53111050	53112050
42	1 1/2"	50	101600HA	—	191600HA	53015080	52015766	53111060	53112060

\* Metric hoods do not come with a neck

**Approvals**

**RoHS** ✓

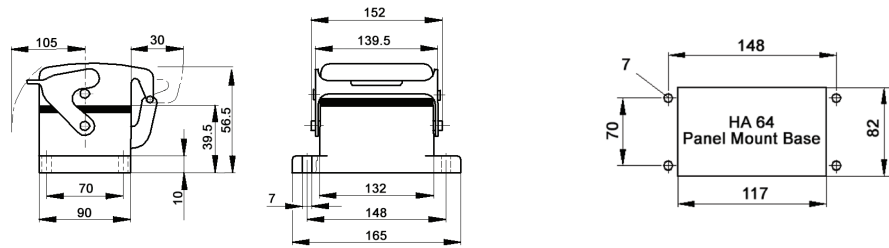
**Complete the Installation**

 HA Dust Covers: page 415

Photographs are not to scale and are not true representations of the products in question. For current information go to our website. If not otherwise specified, all values relating to the product are nominal values.

# EPIC® HA 64 Panel Mount Bases

## Single Level



All dimensions are in mm.

### Technical Data

<b>Specifications:</b>	DIN 43652, DIN 50262 (metric)	<b>Protection Class:</b>	NEMA 4, NEMA 12, IP65
<b>Temperature Range:</b>	-40°C to +125°C	<b>Material:</b>	Powder-coated aluminum alloy

Description	Part Number
Panel Mount Base	101610HA
Panel Mount Base with Dust Cover: Hold Down Screw	101520HA
Panel Mount Base with Dust Cover: Hold Down Screw & Dust Cover Bolts	101525HA

### Complete the Installation



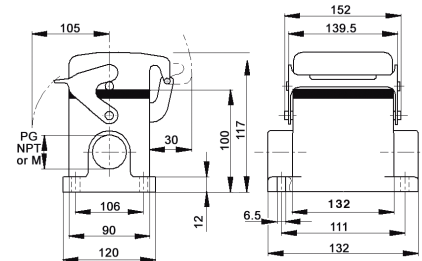
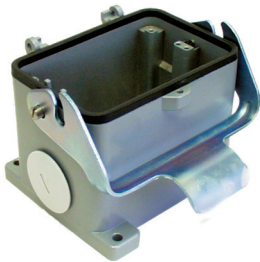
HA Dust Covers:  
page 415

### Approvals



# EPIC® HA 64 Surface Mount Bases

## Single Level



All dimensions are in mm.

### Technical Data

<b>Specifications:</b>	DIN 43652, DIN 50262 (metric)	<b>Protection Class:</b>	NEMA 4, NEMA 12, IP65
<b>Temperature Range:</b>	-40°C to +125°C	<b>Material:</b>	Powder-coated aluminum alloy

Size of Entry	PG		Part Number	Complete the Installation: SKINTOP® Strain Relief, page 368					
	NPT	Metric		PG Nylon	PG Metal	Metric Nylon	Metric Metal		
<b>2 Entries</b>									
29	1"	32	101660HA	101660NP-HA	191660HA	53015060	52015760	53111040	53112040
36	1 1/4"	40	101661HA	101661NP-HA	191661HA	53015070	52015765	53111050	53112050
<b>1 Entry</b>									
29	1"	32	101650HA	101650NP-HA	191650HA	53015060	52015760	53111040	53112040
36	1 1/4"	40	101651HA	101651NP-HA	191651HA	53015070	52015765	53111050	53112050
<b>2 Entries with Dust Cover</b>									
29	1"	32	101680HA	101680NP-HA	191680HA	53015060	52015760	53111040	53112040
36	1 1/4"	40	1010681HA	101681NP-HA	191681HA	53015070	52015765	53111050	53112050
<b>1 Entry with Dust Cover</b>									
29	1"	32	101670HA	101670NP-HA	191670HA	53015060	52015760	53111040	53112040
36	1 1/4"	40	101671HA	101671NP-HA	191671HA	53015070	52015765	53111050	53112050

### Approvals



### Complete the Installation



HA Dust Covers:  
page 415

Photographs are not to scale and are not true representations of the products in question.

For current information go to our website. If not otherwise specified, all values relating to the product are nominal values.

## CONNECTOR ACCESSORIES

### Glands, Seal Rings & Adapters

#### Glands

EPIC® SM & SP Glands, EPIC® CM-M Glands

#### D Series Pressure Screws

#### U Series Washers

#### Sealing Rings

Neoprene & Viton Concentric Sealing Rings

#### Adapters

#### Reducers

#### Enlargers

#### Metal Blanking Plugs

### Dust Covers

#### Dust Covers for EPIC® HA & HB Housings

### Tools

#### EPIC® Rectangular Hole Punches

For EPIC® HB Panel Mount Bases and SKINTOP® CUBE

#### Easy Strip 2

Stripping & Cutting Tool

#### Crimp Tool & Case

#### Screwdrivers

#### EPIC® MC Series Module Removal Tool

### Replacement Parts

#### EPIC® Flat Gaskets

#### EPIC® Insert Fixing Screws

#### EPIC® HB 48 & HA 64 Replacement Lever Kit

#### EPIC® HB Single Bolt Replacement Roller and Clip

### Coding Pins

### EMI Protection

### Split Hoods

#### HB Split Hoods

For EPIC® HB 16 & HB 24 Housings

#### Split Hood Grommets

### Adapter Plates

#### Cover Plates for Panel Cutouts

#### Adapters for D-Sub Connectors

### DIN Rail Mounting System

#### EPIC® QUICK & EASY DIN Rail Mounting System

EPIC®

Connector  
Accessories

412

413

413

413

414

414

414

414

415

416

417

417

417

417

418

418

418

418

419

420

420

421

421

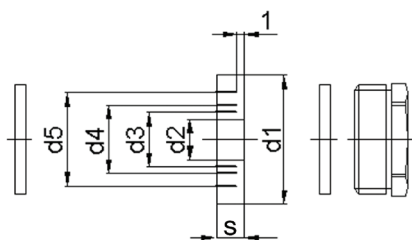
421

422



# EPIC® SM & SP Glands

## EPIC® SM Glands



## EPIC® SP Glands



### Technical Data

**Material:**

- EPIC® SM glands: Nickel-plated brass
- EPIC® SP glands: Polystyrol

**Temperature Range:**

- EPIC® SM glands: -40°C to +125°C
- EPIC® SP glands: -20°C to +55°C

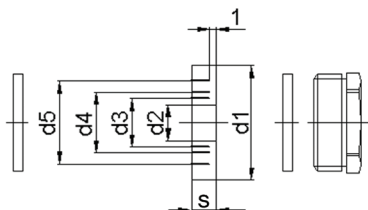
### PG Parts

PG	Part Number		Gland Dimension (mm)										Wrench Size (mm)	
	EPIC® SM	EPIC® SP	d1	d2	d2 Cable OD	d3	d3 Cable OD	d4	d4 Cable OD	d5	d5 Cable OD	s	EPIC® SM	EPIC® SP
9	12954100	—	13.3	5	4-6	7.5	6.5-8.5	10	9-11	—	—	5.5	15	—
11	12954200	12957100	16.5	7.5	6.5-8.5	10	9-11	12.5	11.5-13.5	—	—	6	18	19
13	12954300	—	18.3	7.5	6.5-8.5	10	9-11	12.5	11.5-13.5	—	—	6	20	21
16	12954400	—	20.4	7.5	6.5-8.5	10	9-11	12.5	11.5-13.5	15	14-16	7	22	23
21	12954500	—	25.9	10	9-11	13	12-14	16	15-17	19	18-20	8	28	30
29	12954600	—	34.7	18	17-19	21	20-22	24	23-25	27	26-28	9.5	37	—
36	12954700	—	44.7	24	23-25	27	26-28	30	29-31	33	32-34	12	47	—
42	12954800	—	51.7	30	29-31	33	32-34	36	35-37	39	38-40	14	54	—

### Metric Parts

Metric	Part Number	Gland Dimension (mm)										Wrench Size (mm)	Standard Pack
		EPIC® SM-M	d1	d2	d2 Cable OD	d3	d3 Cable OD	d4	d4 Cable OD	d5	d5 Cable OD		
12	71200000	10	5	4-6	—	—	—	—	—	—	5	12	5
20	71200200	17.6	4	3-5	7	6-8	10	9-11	13	12-14	6	20	5
25	71200300	22.6	8.5	7.5-9.5	11.5	10.5-12.5	14.5	13.5-15.5	17.5	16.5-18.5	7.5	25	5
32	71200400	29.6	16	15-17	19	18-20	22	21-23	25	24-26	9.5	32	5
40	71200500	37.6	23	22-24	26	25-27	29	23-28	32	31-33	12	40	5

# EPIC® CM-M Glands



### Technical Data

- Material:** Nickel-plated brass
- Temperature Range:** -40°C to +125°C
- Protection Class:** IP54 (DIN 46320)

Metric	Part Number	Gland Dimension (mm)										Wrench Size (mm)	Standard Pack
		EPIC® CM-M	d1	d2	d2 Cable OD	d3	d3 Cable OD	d4	d4 Cable OD	d5	d5 Cable OD		
20	71201200	17.6	4	3-5	7	6-8	10	9-11	13	12-14	6	23	5
25	71201300	22.6	8.5	7.5-9.5	11.5	10.5-12.5	14.5	13.5-15.5	17.5	16.5-18.5	7.5	28	5
32	71201400	29.6	16	15-17	19	18-20	22	21-23	25	24-26	9.5	36	5
40	71201500	37.6	23	22-24	26	25-27	29	23-28	32	31-33	12	46	5



Photographs are not to scale and are not true representations of the products in question.

For current information go to our website. If not otherwise specified, all values relating to the product are nominal values.

## D Series Pressure Screws

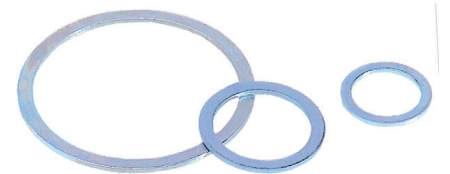
PG	Part Number	Wrench Size (mm)	Standard Pack
7	52100200	13	100
11	52100220	18	100
16	52100240	22	50
21	52100250	28	50
29	52100260	37	25
36	52100270	47	10





Technical Data	
 Material:	Nickel-plated brass
 Specifications:	DIN 46320

## U Series Washers

PG	Part Number	Measurements (mm)			Standard Pack
		External Diameter	Internal Diameter	Thickness	
7	52010170	11	8	0.8	100
9	52010180	13.5	10	0.8	100
11	52010190	17	12	0.8	100
13	52010200	18.5	14	0.8	100
16	52010210	20.5	16	0.8	50
21	52010220	26	21	0.8	50
29	52010230	35	30	0.8	25
36	52010240	45	38	0.8	10




Technical Data	
 Material:	Galvanized steel
 Specifications:	DIN 46320

## E Series Neoprene Concentric Sealing Rings

PG	Part Number	External Diameter	Measurements (mm)	Standard Pack
			Concentric Bores	
9	52005780	13.5	5 – 8	500
11	52003690	16.5	7 – 10 – 12.5	500
13	52003700	18.5	7 – 10.5 – 13 – 16	500
16	52003710	20.5	8 – 10.5 – 13.5 – 16	500
21	52003720	26	11 – 15 – 18 – 20	100
29	52003730	35	19 – 23 – 27 – 31	100
36	52003740	45	25 – 28 – 31 – 35	50




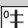
Technical Data	
 Material:	Neoprene

These rings can be individually adapted to various cable diameters by removing the appropriate sizes. They are also suitable for half glands.

## EV Series Viton Concentric Sealing Rings

PG	Part Number	External Diameter	Measurements (mm)	Standard Pack
			Concentric Bores	
11	52010340	16.5	7 – 10 – 12.5	50
13	52010350	18.5	7 – 10.5 – 13 – 16	50
21	52010370	26	11 – 15 – 18 – 20	25
29	52010380	35	19 – 23 – 27 – 31	25



Technical Data	
 Material:	Viton
 Temperature Range:	up to +165°C

These rings can be individually adapted to various cable diameters by removing the appropriate sizes. They are also suitable for half glands.

Photographs are not to scale and are not true representations of the products in question. For current information go to our website. If not otherwise specified, all values relating to the product are nominal values.

## PG/NPT/Metric Adapters



■ Technical Data	
Material:	Nickel-plated brass
Specifications:	DIN 46320

For product specification and part numbers, see page 554.

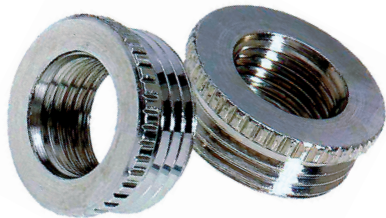
## Metric to PG Adapters



■ Technical Data	
Material:	Brass

For product specification and part numbers, see page 554.

## Reducers



■ Technical Data	
Material:	Nickel-plated brass
Specifications:	DIN 46320

For product specification and part numbers, see page 552.

## Enlargers




■ Technical Data	
Material:	Nickel-plated brass
Specifications:	DIN 46320

For product specification and part numbers, see page 552.

## Metal Blanking Plugs



**Complete the Installation**



Blind Hood  
Attachment String  
10053010

■ Technical Data	
Material:	Nickel-plated brass

Hole plugs are for use when existing PG-threaded holes are not yet or no longer required. For product specification and part numbers, see page 551.

Photographs are not to scale and are not true representations of the products in question.  
For current information go to our website. If not otherwise specified, all values relating to the product are nominal values.



# EPIC® HA Dust Covers

EPIC® HA series protective covers are made of impact-resistant plastic, which provides effective protection against environmental influences. Inserts are easily protected when not in use.



### Technical Data

**Material:** Thermoplastic resin & aluminum **Temperature Range:** -40°C to +125°C

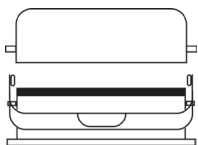
HA Series	Material	Description	Gasket	with String	without String
HA 3/4	Plastic	For bases & cable coupler hoods with male insert	—	10430400	10430000
	Plastic	For bases & cable coupler hoods with female insert	Included	10430100	10430300
	Metal	For bases & cable coupler hoods with male insert	—	10513000	—
	Metal	For bases & cable coupler hoods with female insert	Included	10513100	—
HA 10	Plastic	For hoods	—	10457600	10457800
	Plastic	For bases & cable coupler hoods	Included	10457500	10457700
HA 16	Plastic	For hoods	—	10469600	10469800
	Plastic	For bases & cable coupler hoods	Included	10469500	10469700
HA 32	Plastic	For hoods	Included	10481600	10481800
	Plastic	For bases & cable coupler hoods	—	10481500	10481700
HA 48	Plastic	For bases & cable coupler hoods	-	10118020	-

# EPIC® HB Dust Covers



HB Series	Material	Description	Levers / Bolts	Gasket	Part Number with String
HB 6	Plastic	For hoods	Single lever	Included	10016500
	Plastic	For bases & cable coupler hoods	Single lever bolts	—	10015000
HB 10	Plastic	For hoods	Single lever	—	10048600
	Plastic	For bases & cable coupler hoods	Single lever bolts	—	10048700
	Plastic	For hoods	Double levers	Included	10048500
HB 16	Plastic	For bases & cable coupler hoods	Double lever bolts	—	10047000
	Plastic	For hoods	Single lever	—	10088600
	Plastic	For bases & cable coupler hoods	Single lever bolts	—	10088700
	Plastic	For hoods	Double levers	Included	10088500
HB 24	Plastic	For bases & cable coupler hoods	Double lever bolts	—	10087000
	Plastic	For hoods	Single lever	—	10118600
	Plastic	For bases & cable coupler hoods	Single lever bolts	—	10118700
	Plastic	For hoods	Double levers	Included	10119500
HB 32	Plastic	For bases & cable coupler hoods	Double lever bolts	—	10118000
	Plastic	For bases & cable coupler hoods	Double lever bolts	—	10118020

Dust Cover with Bolts



Base with Gasket

Dust Cover with Bolts



Cable Coupler with Gasket

Dust Cover with Lever & Gasket



Hood with Bolts

Dust Cover with Bolts & Gasket



Hood with Levers

Photographs are not to scale and are not true representations of the products in question. For current information go to our website. If not otherwise specified, all values relating to the product are nominal values.

# EPIC® Rectangular Hole Punches

For EPIC® HB Panel Mount Bases and SKINTOP® CUBE



EPIC® rectangular hole punches provide a quick, accurate means of cutting clearance holes for mounting EPIC® HB series rectangular panel mount bases and SKINTOP® CUBE multi-cable bushing systems without sawing or filing. The dies include four drill guide holes for the base's screw mounting holes. Centering alignment marks are also included for easy squaring of the die with the panel cabinet. The unique 2-piece die configuration simplifies scrap slug removal.

The EPIC® hole punches can be used with mild steel up to 14 GA (2.0 mm) thickness or aluminum up to 10 GA (2.54 mm). These punches are intended for manual use with a ratchet or other suitable wrench or with a hand- or foot-operated hydraulic driver and ram using a 3/4" draw stud.

## 3/4" x 7" Draw Stud Set



Description	Part Number
3/4" x 7" Draw Stud Set	61U00197

Set includes: draw stud, drive nut, counter nut, ball bearing, and spacer

## 3/4" x 7" Draw Stud



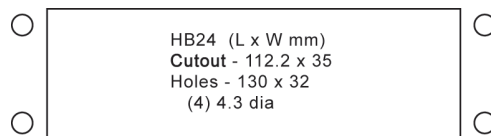
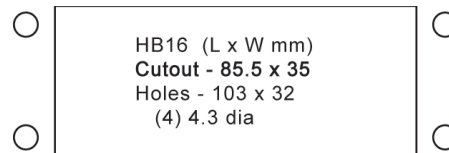
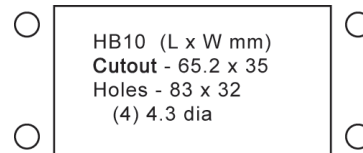
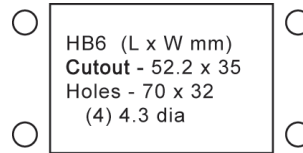
Description	Part Number
3/4" x 7" Draw Stud	61U00198

## Punch & Die Sets



Size	Part Number	Max. Panel Thickness
HB 6	61U00199	Mild Steel: 14 GA (2.0 mm) Aluminum: 10 GA (2.54 mm)
HB 10	61U00200	
HB 16	61U00201	
HB 24	61U00203	

## Panel Cutouts



### For Manual Operation:

Order the Draw Stud Set & required size Punch & Die Set

### For Hydraulic Operation:

Order the required size Punch & Die Set and if needed, the 3/4" Draw Stud

Photographs are not to scale and are not true representations of the products in question. For current information go to our website. If not otherwise specified, all values relating to the product are nominal values.

## Easy Strip 2 Stripping & Cutting Tool

Description	Size Range	Part Number
Easy Strip 2 Tool	Up to 8 AWG (10 mm <sup>2</sup> )	61735800




For PVC and similarly insulated conductors.  
Includes "X" blade cartridge.



## Crimp Tool & Case

Description	Crimp Range	Part Number
Crimp Tool & Case	26 - 8 AWG (0.14 - 10 mm <sup>2</sup> )	11147000

**Complete the Installation**

	Crimp Dies: page 288		Locator: page 288		Removal Tool page 288
---	-------------------------	---	----------------------	---	--------------------------



### Precision Flat Head Screwdriver



### Precision Phillips Screwdriver PH1



## Screwdrivers Adjustable Torque Screwdriver



Description	Torque Settings	Part Number
Adjustable Torque Screwdriver	0.3 - 1.2 Nm (2.7 - 10.6 in-lbs)	61813958
Precision Phillips Screwdriver PH1	—	75011500
Precision Flat Heat Screwdriver	—	75011600

Torque screwdriver for use with flat blade or Phillips type 1/4" hex bits.  
Recommended for use with insert terminal screws.

## EPIC® MC Series Module Removal Tool

For removing EPIC® MC series modules from module mounting frames (3, 4+PE, 5, 10 & 20 contact modules; dummy, cage clamp, Ethernet & pneumatic modules)

Description	Part Number
EPIC® MC Series Module Removal Tool	11171200



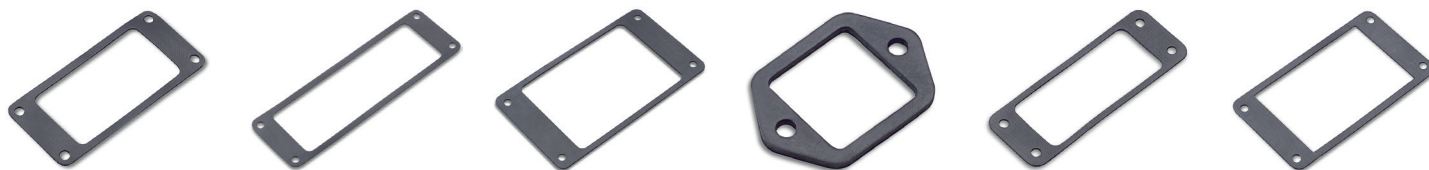
■ Approvals



Photographs are not to scale and are not true representations of the products in question.  
For current information go to our website. If not otherwise specified, all values relating to the product are nominal values.

## EPIC® Flat Gaskets

For EPIC® HA & EPIC® HB Panel Mount Bases



Part Number	HA	HB	Part Number	HA	HB
<b>Flat Gasket for EPIC® HA Series</b>			<b>Flat Gasket for EPIC® HB Series</b>		
10607100	HA 3/4	–	10051000	–	HB 6
10607200	HA 10	–	10051200	–	HB 10
10607300	HA 16	–	10051400	–	HB 16
10607600	HA 32	–	10051600	–	HB 24
			10052000	HA 48	HB 32
			10052200	HA 64	HB 48

### Approvals



## Fixing Screws

For EPIC® Rectangular Inserts



Description	Part Number	EPIC® Series Insert
Screw with O-ring	44423017	HA 3/4, HD 7, HD 8, HQ5
Screw	44423018	STA series

### Approvals



Quantities available in multiples of 10.

## Replacement Lever Kit

For EPIC® HB 48 & EPIC® HA 64 Panel Mount Bases

Description	Part Number
Replacement Lever Kit	10017101

Kit includes lever and two threaded lever-mounting bolts.

## Single Bolt Hood Replacement Roller and Clip

For EPIC® HB Series Housings with Single Levers



Description	Material	Part Number
<b>Standard Roller and Clip</b>		
Replacement Roller	Black plastic	10055000
Replacement Clip	Plated steel	10056014
<b>Heavy-duty Roller and Clip</b>		
Heavy-duty Replacement Roller	Stainless steel	10055100
Heavy-duty Replacement Clip	Stainless steel	10056013

Photographs are not to scale and are not true representations of the products in question.

For current information go to our website. If not otherwise specified, all values relating to the product are nominal values.

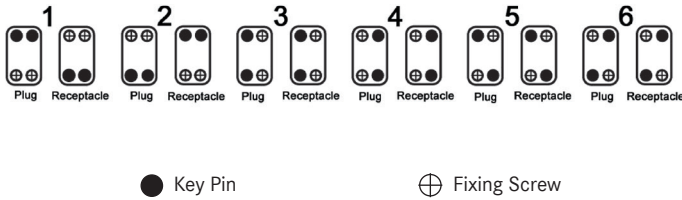
# Coding with Key Pin

Part Number	EPIC® Series Insert	Standard Pack
10019000	HA, HBE, HEE, HBS, HBVE, HD, HDD, MC, Mixed Power	50
10509000	STA	10

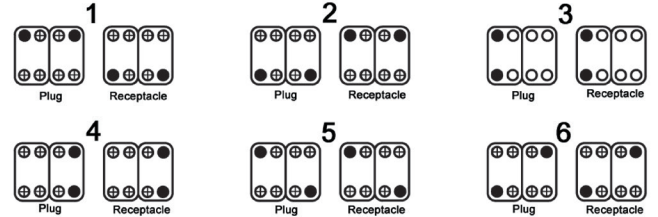
Coding is used when several connectors are mounted next to one another. This helps prevent incorrect connections.



### Key Positions for 1 Insert



### Key Positions for 2 Inserts



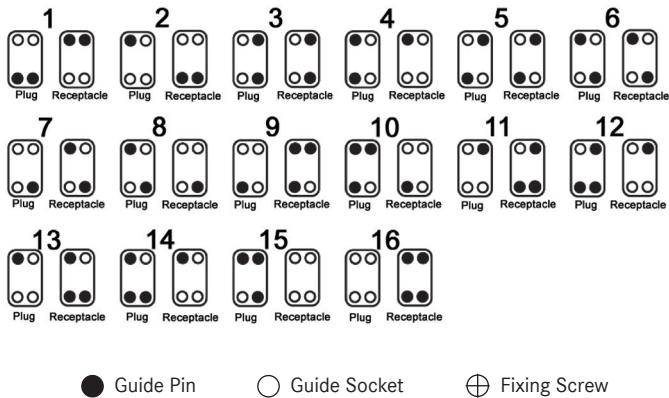
# Coding with Guide Pin & Socket

For Screw, Crimp & Cage Clamp Termination

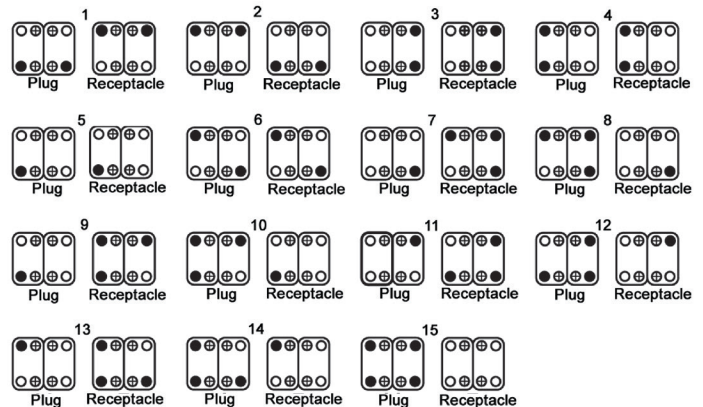
Part Number	EPIC® Series Insert	Description	Standard Pack
11280000	HA, HBE, HBS, HBVE	Guide Pin	50
11281000	HEE, HD, HDD, MC, Mixed Power	Guide Socket	50



### Key Positions for 1 Insert



### Key Positions for 2 Inserts



# Coding with Contact Loss

HQ 5

HA 3/4

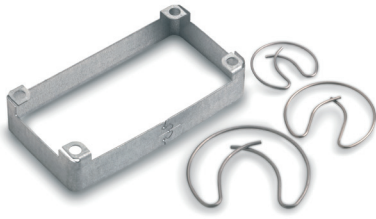
Part Number	EPIC® Series Insert	Standard Pack
10451400	HA 3/4	50
10436500	HQ 5	10



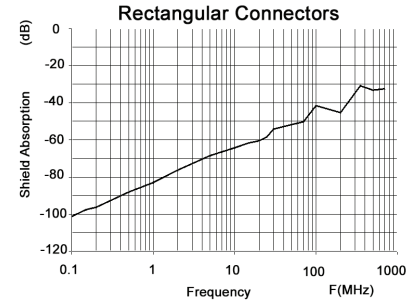
Photographs are not to scale and are not true representations of the products in question. For current information go to our website. If not otherwise specified, all values relating to the product are nominal values.

# EMI Protection

For EPIC® Rectangular Connectors



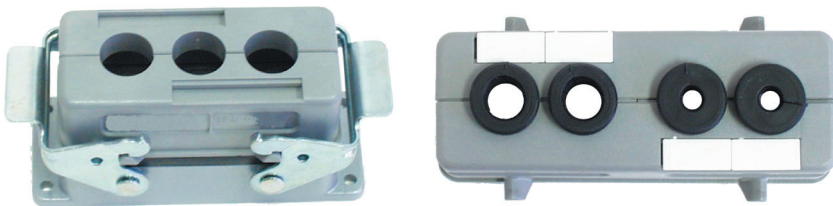
The perfect shielding against electromagnetic interference, EMI protection for EPIC® rectangular connectors is easy to mount, compatible with standard housings, and can be installed in the field.



Size	Description	PG	Part Number	Metric
<b>EMI Protection for EPIC® HA Series</b>				
HA 10	For panel mount bases	70700000		—
HA 16	For panel mount bases	70700100		—
HA 16	For surface mount bases & cable coupler hoods	70702100		—
<b>EMI Protection for EPIC® HB Series</b>				
HB 6	For panel mount bases	70350000		79350000
HB 6	For surface mount bases & cable coupler hoods	70352000		—
HB 10	For panel mount bases	70350100		79350100
HB 10	For surface mount bases & cable coupler hoods	70352100		79352100
HB 16	For panel mount bases	70350200		79350200
HB 16	For surface mount bases & cable coupler hoods	70352200		79352200
HB 24	For panel mount bases	70350300		79350300
HB 24	For surface mount bases & cable coupler hoods	70352300		79352300

# HB Split Hoods with Double Latch Bolts

For EPIC® HB 16 & HB 24 Housings



Split hoods allow multiple cable assemblies to pass through one hood, providing a convenient way to pass finished cables into a panel without having to re-terminate the assembly. A maximum of 4 cables ranging in size from 3 mm to 16 mm each may pass through a single hood.

Part Number	Description	Cable Outer Diameter	Mates with Panel Mount Base
HBSH 16	3 gland openings	3 mm - 16 mm	100720C0
HBSH24	4 gland openings	3 mm - 16 mm	101020C0

Both the HBSH 16 and HBSH 24 hoods can accommodate any combination of the grommets listed below. When used with the grommets, the split hood provides an IP54 environmental seal.

# Split Hood Grommets



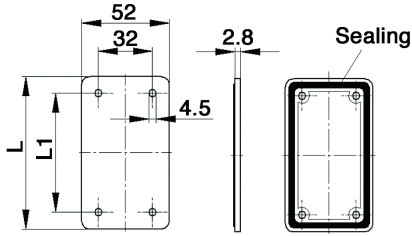
Thermoplastic rubber split grommets are available in a range of sizes. The grommets seal around the cables and provide IP54 protection as well as strain relief in the mated and assembled position. The HBSH 16 housing is capable of accommodating 3 glands; the HBSH 24 housing can accommodate 4 glands.

Technical Data	
<b>Material:</b>	Thermoplastic rubber (UL approved)
<b>Temperature Range:</b>	-40°C to +140°C

Part Number	Clamp Range	Standard Pack	Part Number	Clamp Range	Standard Pack
SHG 3	3-4 mm	10	SHG 10	10-11 mm	10
SHG 4	4-5 mm	10	SHG 11	11-12 mm	10
SHG 5	5-6 mm	10	SHG 12	12-13 mm	10
SHG 6	6-7 mm	10	SHG 13	13-14 mm	10
SHG 7	7-8 mm	10	SHG 14	14-15 mm	10
SHG 8	8-9 mm	10	SHG 15	15-16 mm	10
SHG 9	9-10 mm	10	SHG 0	blank	10

Photographs are not to scale and are not true representations of the products in question. For current information go to our website. If not otherwise specified, all values relating to the product are nominal values.

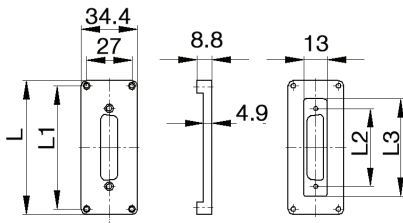
# Cover Plates for Panel Cutouts



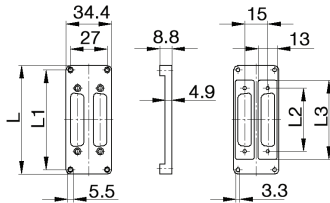
Size	Part Number	Measurements (mm)	
		L	L1
HB 6	10018920	90.5	70.0
HB 10	10018921	103.0	83.3
HB 16	10018922	123.5	103.0
HB 24	10018923	150.0	130.0

## Adapters for D-Sub Connectors

### Single D-Sub Connectors



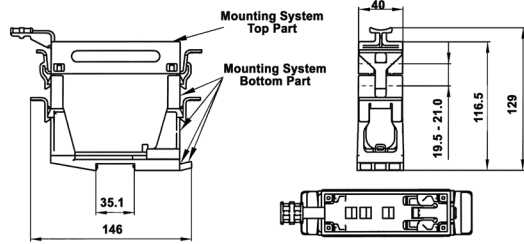
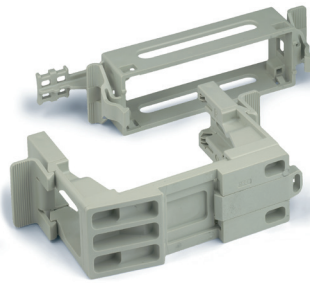
### Double D-Sub Connectors



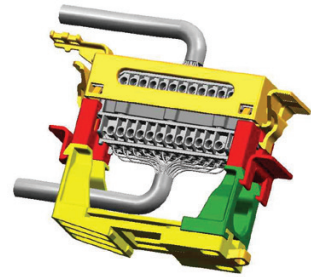
Size	DB Cutout	Part Number	Measurements (mm)			
			L	L1	L2	L3
<b>Adapters for Single D-Sub Connectors</b>						
HB 6	DB 9	11764200	51.3	44.0	25.0	31.4
HB 6	DB 15	11764202	51.3	44.0	33.3	39.2
HB 10	DB 25	11764300	64.2	57.0	47.1	53.1
HB 16	DB 25	11764400	85.0	77.5	47.1	53.6
<b>Adapters for Double D-Sub Connectors</b>						
HB 6	DB 9 (x2)	11764201	51.3	44.0	25.0	31.4
HB 6	DB 15 (x2)	11764203	51.3	44.0	33.3	39.2
HB 10	DB 25 (x2)	11764301	64.2	57.0	47.1	53.1
HB 16	DB 25 (x2)	11764401	85.0	77.5	47.1	53.6

Photographs are not to scale and are not true representations of the products in question. For current information go to our website. If not otherwise specified, all values relating to the product are nominal values.

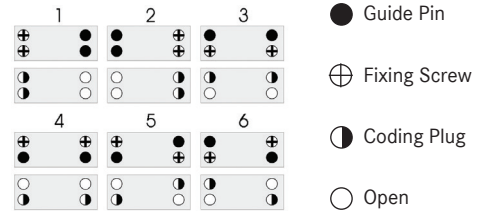
# EPIC® QUICK & EASY DIN Rail Mounting System



All dimensions are in mm.



The EPIC® QUICK & EASY system greatly simplifies mounting a wide range of EPIC® connectors onto standard DIN rail without the added cost of housings. The system can be purchased as one complete unit or the upper and lower portions can be purchased separately. The upper portions come in 4 different sizes to accommodate EPIC® HBE, HEE, HBS, HDVE, HD, HDD & Modular (MC) contact inserts. The bottom portion of the system adjusts to accommodate 4 sizes. The system components lock in place via snap hooks and are directly mateable with existing systems. The slider latch allows for quick removal and attachment of the base from the DIN rail for wiring. Also, the unit can be labeled in three places with printed or handwritten labels. A special coding set with key pin allows for coding of the inserts to prevent mismatching side-by-side connectors.



Complete the Installation	
	Coding Set (pack of 50) 10028000
	Insert Removal Tool 10028100

## Technical Data

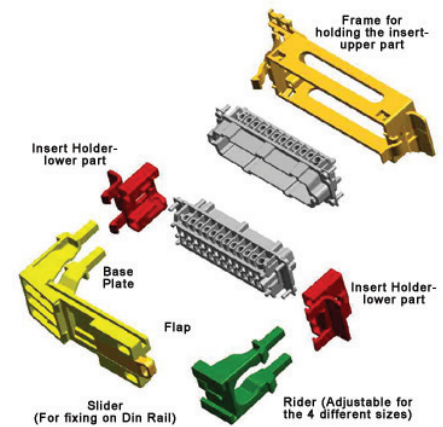
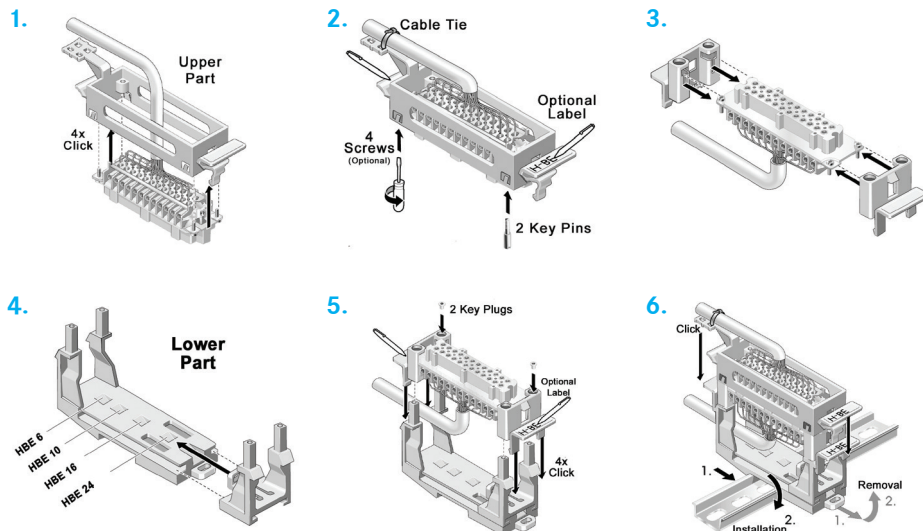
<b>Locking Device:</b>	For DIN rail acc. to DIN EN 50022	<b>Temperature Range:</b>	-40°C to +125°C
<b>Material:</b>	Gray phosphorus- & halogen-free polycarbonate	<b>Combustibility Class:</b>	V-0 per UL 94

## Mating Components

EPIC® QUICK & EASY System	Compatible Mating Inserts						MC
	HBE	HEE	HBS	HBVE	HD	HDD	
HB 6	HBE 6	HEE 10	—	—	—	HDD 24	MC 2
HB 10	HBE 10	HEE 18	—	HBVE 3	—	HDD 42	MC 3
HB 16	HBE 16	HEE 32	HBS 6	HBVE 6	HD 40	HDD 72	MC 5
HB 24	HBE 24	HEE 46	—	HBVE 10	HD 64	HDD 108	MC 7

Part Number	Size
<b>Complete Systems</b>	
10027000	HB 6
10027100	HB 10
10027200	HB 16
10027300	HB 24
<b>Upper Part Only</b>	
10027410	HB 6
10027510	HB 10
10027610	HB 16
10027710	HB 24
<b>Lower Part Only</b>	
10027810	HB 6 - 24

## Six Easy Steps: Click – Snap – Ready!



Photographs are not to scale and are not true representations of the products in question. For current information go to our website. If not otherwise specified, all values relating to the product are nominal values.