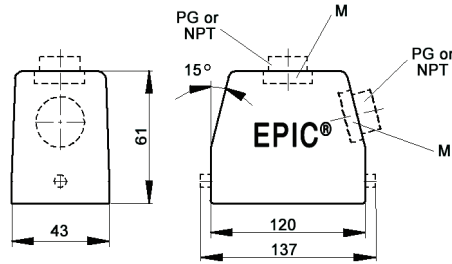


EPIC® HB 24 Standard Hoods

Single Lever Bolts



All dimensions are in mm.

Technical Data

Specifications:	DIN 43652	IP Protection Class:	NEMA 4, NEMA 12, IP65
Temperature Range:	-40°C to +125°C	Material:	Powder-coated aluminum alloy

PG	Size of Entry		PG	Part Number		Complete the Installation: SKINTOP® Strain Relief, page 368			
	NPT	Metric		NPT	Metric	PG Nylon	PG Metal	Metric Nylon	Metric Metal
Top Entry									
21	3/4"	25	101219	101219NP	19121900*	53015050	52015750	53111030	53112030
29	1"	32	101119	101119NP	19111900*	53015060	52015760	53111040	53112040
Side Entry									
21	3/4"	25	101139	101139NP	19113900	53015050	52015750	53111030	53112030
29	1"	32	101239	101239NP	19123900	53015060	52015760	53111040	53112040

* Metric top-entry hoods do not come with a neck.

Approvals



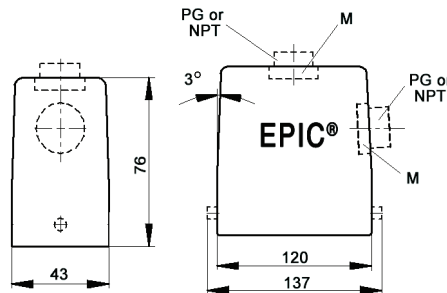
Complete the Installation



HB Dust Covers:
page 415

EPIC® HB 24 High Profile Hoods

Single Lever Bolts



All dimensions are in mm.

Technical Data

Specifications:	DIN 43652	IP Protection Class:	NEMA 4, NEMA 12, IP65
Temperature Range:	-40°C to +125°C	Material:	Powder-coated aluminum alloy

PG	Size of Entry		PG	Part Number		Complete the Installation: SKINTOP® Strain Relief, page 368			
	NPT	Metric		NPT	Metric*	PG Nylon	PG Metal	Metric Nylon	Metric Metal
Top Entry									
21	3/4"	25	701444	701444NP	79144400	53015050	52015750	53111030	53112030
29	1"	32	701446	701446NP	79144600	53015060	52015760	53111040	53112040
-	-	40	-	-	79144800	-	-	53111050	53112050
Side Entry									
21	3/4"	25	701544	701544NP	79154400	53015050	52015750	53111030	53112030
29	1"	32	701546	701546NP	79154600	53015060	52015760	53111040	53112040
-	-	40	-	-	79154800	-	-	53111050	53112050

* Metric hoods do not come with a neck.

Approvals



Complete the Installation

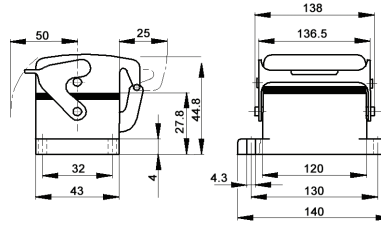
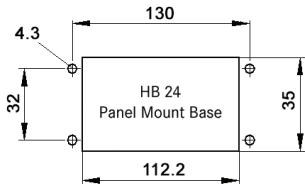


HB Dust Covers:
page 415

Photographs are not to scale and are not true representations of the products in question. For current information go to our website. If not otherwise specified, all values relating to the product are nominal values.

EPIC® HB 24 Panel Mount Bases

Single Lever



All dimensions are in mm.

Technical Data	
Specifications:	DIN 43652
Protection Class:	NEMA 4, NEMA 12, IP65
Temperature Range:	-40°C to +125°C
Material:	Powder-coated aluminum alloy

Description	Part Number
Panel Mount Base	10102900
Panel Mount Base with Dust Cover	10103900

Complete the Installation

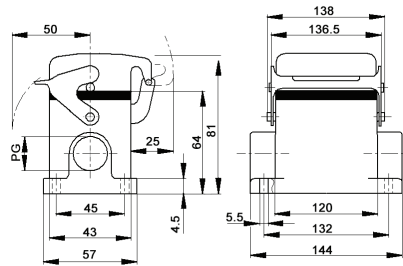
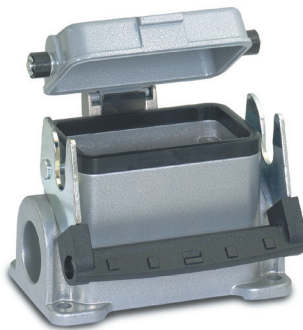
HB Dust Covers: page 415

Approvals

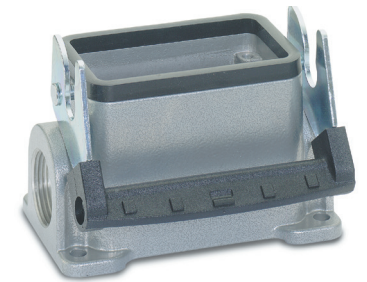


EPIC® HB 24 Surface Mount Bases

Single Lever



All dimensions are in mm.



Technical Data	
Specifications:	DIN 43652
Protection Class:	NEMA 4, NEMA 12, IP65
Temperature Range:	-40°C to +125°C
Material:	Powder-coated aluminum alloy

PG	Size of Entry		PG	Part Number		Complete the Installation: SKINTOP® Strain Relief, page 368			
	NPT	Metric		NPT	Metric	PG Nylon	PG Metal	Metric Nylon	Metric Metal
2 Entries									
21	3/4"	25	101059	101059NP	19105900	53015050	52015750	53111030	53112030
1 Entry									
21	3/4"	25	101049	101049NP	19104900	53015050	52015750	53111030	53112030
2 Entries with Dust Cover									
21	3/4"	25	101099	101099NP	19109900	53015050	52015750	53111030	53112030
1 Entry with Dust Cover									
21	3/4"	25	101079	101079NP	19107900	53015050	52015750	53111030	53112040

Approvals



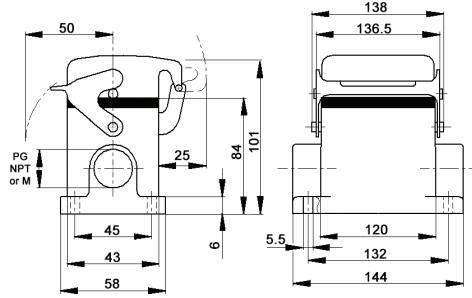
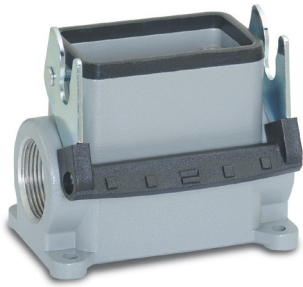
Complete the Installation

HB Dust Covers: page 415

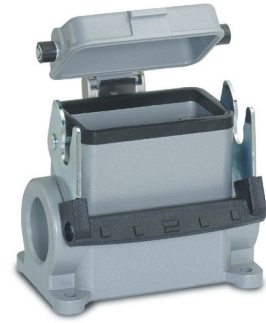
Photographs are not to scale and are not true representations of the products in question. For current information go to our website. If not otherwise specified, all values relating to the product are nominal values.

EPIC® HB 24 High Profile Surface Mount Bases

Single Lever



All dimensions are in mm.



Technical Data

Specifications:	DIN 43652	Protection Class:	NEMA 4, NEMA 12, IP65
Temperature Range:	-40°C to +125°C	Material:	Powder-coated aluminum alloy

PG	Size of Entry		PG	Part Number			Complete the Installation: SKINTOP® Strain Relief, page 368			
	NPT	Metric		NPT	Metric	Metric	PG Nylon	PG Metal	Metric Nylon	Metric Metal
2 Entries										
21	3/4"	25	701612	701612NP	79161200	53015050	52015750	53111030	53112030	
29	1"	32	701614	701614NP	79161400	53015060	52015760	53111040	53112040	
1 Entry										
21	3/4"	25	701602	701602NP	79160200	53015050	52015750	53111030	53112030	
29	1"	32	701604R	701604NP	79160400	53015060	52015760	53111040	53112040	
2 Entries with Dust Cover										
21	3/4"	25	701652	701652NP	79165200	53015050	52015750	53111030	53112030	
29	1"	32	701654	701654NP	79165400	53015060	52015760	53111040	53112040	
1 Entry with Dust Cover										
21	3/4"	25	701642	701642NP	79164200	53015050	52015750	53111030	53112030	
29	1"	32	701644	701644NP	79164400	53015060	52015760	53111040	53112040	

Approvals



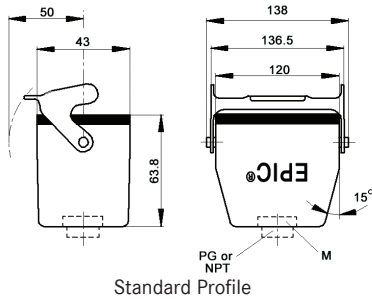
Complete the Installation



HB Dust Covers: page 415

EPIC® HB 24 Cable Coupler Hoods

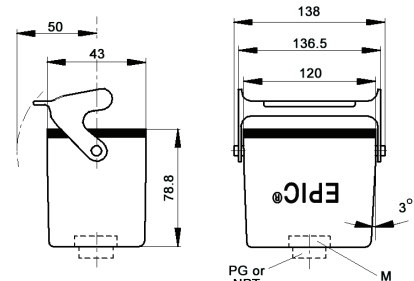
Single Lever



Standard Profile



All dimensions are in mm.



High Profile

Technical Data

Specifications:	DIN 43652	Protection Class:	NEMA 4, NEMA 12, IP65
Temperature Range:	-40°C to +125°C	Material:	Powder-coated aluminum alloy

PG	Size of Entry		PG	Part Number			Complete the Installation: SKINTOP® Strain Relief, page 368			
	NPT	Metric		NPT	Metric*	Metric	PG Nylon	PG Metal	Metric Nylon	Metric Metal
Standard Profile										
21	3/4"	25	101279	101279NP	19127900	53015050	52015750	53111030	53112030	
29	1"	32	101179	101179NP	19117900	53015060	52015760	53111040	53112040	
High Profile										
21	3/4"	25	701424	701424NP	79142400	53015050	52015750	53111030	53112030	
29	1"	32	701426	701426NP	79142600	53015060	52015760	53111040	53112040	

* Metric hoods do not come with a neck.

Approvals



Complete the Installation

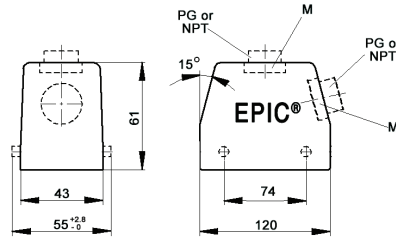


HB Dust Covers: page 415

Photographs are not to scale and are not true representations of the products in question. For current information go to our website. If not otherwise specified, all values relating to the product are nominal values.

EPIC® HB 24 Standard Hoods

Double Lever Bolts



All dimensions are in mm.

Technical Data				
Specifications:	DIN 43652	IP Protection Class:	NEMA 4, NEMA 12, IP65	
Temperature Range:	-40°C to +125°C	Material:	Powder-coated aluminum alloy	

PG	Size of Entry		PG	Part Number		Complete the Installation: SKINTOP® Strain Relief, page 368			
	NPT	Metric		NPT	Metric	PG Nylon	PG Metal	Metric Nylon	Metric Metal
Top Entry									
21	3/4"	25	101210	101210NP	19121000*	53015050	52015750	53111030	53112030
—	—	25x2	—	—	44422019	—	—	53111030	53112030
29	1"	32	101110	101110NP	19111000*	53015060	52015760	53111040	53112040
—	—	32x2	—	—	44422020	—	—	53111040	53112040
Side Entry									
21	3/4"	25	101130	101130NP	19113000	53015050	52015750	53111030	53112030
29	1"	32	101230	101230NP	19123000	53015060	52015760	53111040	53112040

* Metric top-entry hoods do not come with a neck.

Approvals

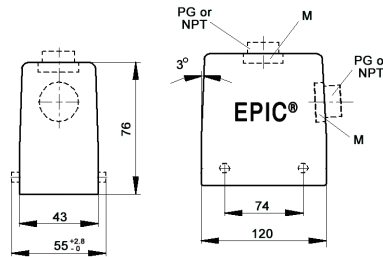


Complete the Installation

HB Dust Covers: page 415

EPIC® HB 24 High Profile Hoods

Double Lever Bolts



All dimensions are in mm.

* Metric hoods do not come with a neck.

Technical Data				
Specifications:	DIN 43652	IP Protection Class:	NEMA 4, NEMA 12, IP65	
Temperature Range:	-40°C to +125°C	Material:	Powder-coated aluminum alloy	

PG	Size of Entry		PG	Part Number		Complete the Installation: SKINTOP® Strain Relief, page 368			
	NPT	Metric		NPT	Metric*	PG Nylon	PG Metal	Metric Nylon	Metric Metal
Top Entry									
21	3/4"	25	701504	701504NP	79150400	53015050	52015750	53111030	53112030
—	—	25x2	—	—	44422021	—	—	53111030	53112030
29	1"	32	701506	701506NP	79150600	53015060	52015760	53111040	53112040
—	—	32x2	—	—	79178500	—	—	53111040	53112040
—	—	40	—	—	79150800	—	—	53111050	53112050
Side Entry									
21	3/4"	25	701524	701524NP	79152400	53015050	52015750	53111030	53112030
29	1"	23	701526	701526NP	79152600	53015060	52015760	53111040	53112040
—	—	40	—	—	79152800	—	—	53111050	53112050

Approvals



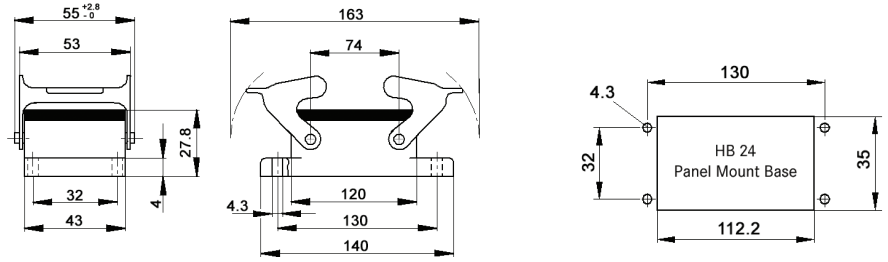
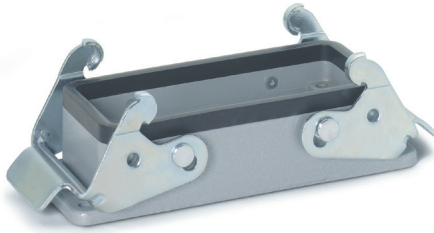
Complete the Installation

HB Dust Covers: page 415

Photographs are not to scale and are not true representations of the products in question. For current information go to our website. If not otherwise specified, all values relating to the product are nominal values.

EPIC® HB 24 Panel Mount Bases

Double Levers



All dimensions are in mm.

Technical Data

Specifications:	DIN 43652	Protection Class:	NEMA 4, NEMA 12, IP65
Temperature Range:	-40°C to +125°C	Material:	Powder-coated aluminum alloy

Description	Part Number
Panel Mount Base	101020C0

Complete the Installation



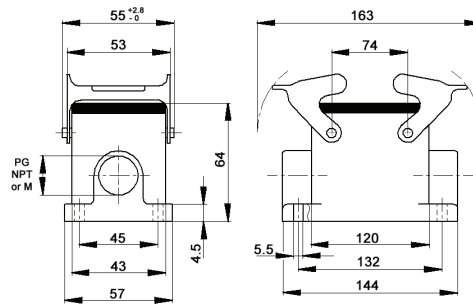
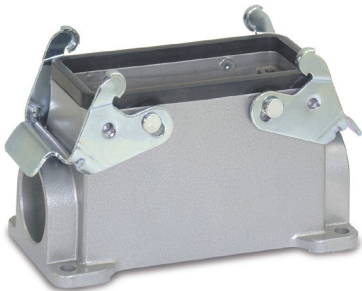
HB Dust Covers:
page 415

Approvals



EPIC® HB 24 Surface Mount Bases

Double Levers



All dimensions are in mm.

Technical Data

Specifications:	DIN 43652	Protection Class:	NEMA 4, NEMA 12, IP65
Temperature Range:	-40°C to +125°C	Material:	Powder-coated aluminum alloy

PG	Size of Entry		PG	Part Number			Complete the Installation: SKINTOP® Strain Relief, page 368			
	NPT	Metric		NPT	Metric	Metric	PG Nylon	PG Metal	Metric Nylon	Metric Metal
2 Entries										
21	3/4"	25	101050	101050NP	19105000	53015050	52015750	53111030	53112030	
1 Entry										
21	3/4"	25	101040	101040NP	19104000	53015050	52015750	53111040	53112030	

Approvals



Complete the Installation

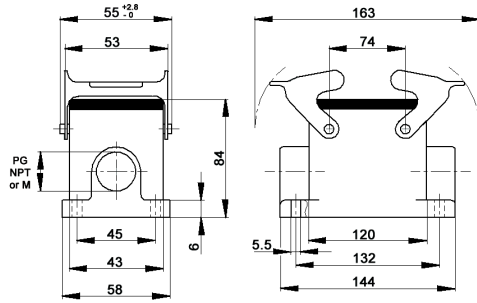


HB Dust Covers:
page 415

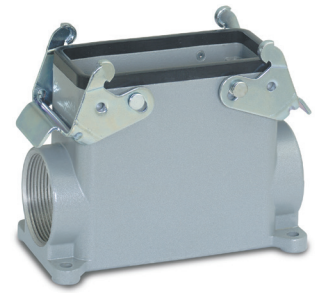
Photographs are not to scale and are not true representations of the products in question. For current information go to our website. If not otherwise specified, all values relating to the product are nominal values.

EPIC® HB 24 High Profile Surface Mount Bases

Double Levers



All dimensions are in mm.



Technical Data			
Specifications:	DIN 43652	Protection Class:	NEMA 4, NEMA 12, IP65
Temperature Range:	-40°C to +125°C	Material:	Powder-coated aluminum alloy

PG	Size of Entry		PG	Part Number		Complete the Installation: SKINTOP® Strain Relief, page 368			
	NPT	Metric		NPT	Metric	PG Nylon	PG Metal	Metric Nylon	Metric Metal
2 Entries									
21	3/4"	25	701362	701362NP	79136200	53015050	52015750	53111030	53112030
29	1"	32	701364	701364NP	79136400	53015060	52015760	53111040	53112040
1 Entry									
21	3/4"	25	701352	701352NP	79135200	53015050	52015750	53111030	53112030
29	1"	32	701354	701354NP	79135400	53015060	52015760	53111040	53112040

Approvals



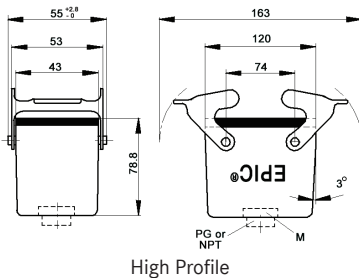
Complete the Installation



HB Dust Covers:
page 415

EPIC® HB 24 Cable Coupler Hoods

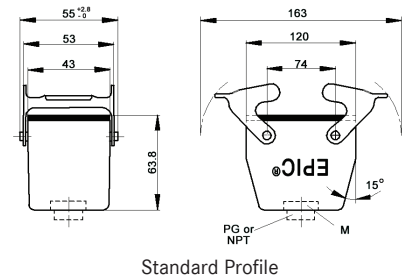
Double Levers



High Profile



All dimensions are in mm.



Standard Profile

Technical Data			
Specifications:	DIN 43652	Protection Class:	NEMA 4, NEMA 12, IP65
Temperature Range:	-40°C to +125°C	Material:	Powder-coated aluminum alloy

PG	Size of Entry		PG	Part Number		Complete the Installation: SKINTOP® Strain Relief, page 368			
	NPT	Metric		NPT	Metric*	PG Nylon	PG Metal	Metric Nylon	Metric Metal
Standard Profile									
21	3/4"	25	101270	101270NP	19127000	53015050	52015750	53111030	53112030
29	1"	32	101170	101170NP	19117000	53015060	52015760	53111040	53112040
High Profile									
21	3/4"	25	701404R	701404NP	79140400	53015050	52015750	53111030	53112030
29	1"	32	701406	701406NP	79140600	53015060	52015760	53111040	53112040

* Metric hoods do not come with a neck.

Approvals



Complete the Installation



HB Dust Covers:
page 415

Photographs are not to scale and are not true representations of the products in question. For current information go to our website. If not otherwise specified, all values relating to the product are nominal values.