



Wireless Products

Where Technology Meets Innovation



Mobile Switching Center
Tower
Distributed Antenna Systems (DAS)
Mobile Backhaul
Antennas and Accessories
Coax Cables, Connectors and Support

Helping you build the top of the tower from the ground up... and everything in between



We know wireless infrastructure

Whether you plan to build a single site or undertake a massive network upgrade, CommScope is there to provide high-performance solutions for all your needs, from the base station to the top of the tower — along the entire RF path.



For more information please visit www.kgplogistics.com

POWERED BY



Table of Contents

KGP Logistics Wireless Products and Services	2
Mobile Switching Center	3
Tower	4
Distributed Antenna Systems (DAS)	5
Mobile Backhaul	6
Antennas	8-12
Accessories	9
Base Station	9
GPS Antennas	10
Microwave Point-to-Point	10-11
Omni	12-13
Yagi	14
Coax and Coax Support	16-42
Boot Assembly	17-18
Entry Panel	18
Hangers	19
Hoisting Grip	20
Coax Cable	21-23
Connectors	24-28
Grounding	29-31
Jumper	32-34
Tools	36-38
Weatherproofing	39
Index	40-46

KGP Logistics is certified to the TL 9000
Quality Management System (QMS) US07/3791



© 2014 KGP Logistics All rights reserved. The name PREMIER and the PREMIER logo are trademarks of KGP Logistics. All other marks are property of their respective owners.

ANY CELL, ANY TECHNOLOGY, ANYWHERE

EVERY CONNECTION COUNTS



KGP Logistics now carries TE's flexible wireless connectivity solutions—a diverse portfolio of fiber and copper connectivity technologies for cell site and backhaul applications. KGP Logistics and TE—more choices, greater connections.

For more information contact KGP Logistics at 800-755-1950 or visit www.kgplogistics.com



Gel Sealed Closure for In-line and Antenna Coaxial Connectors (GSIC)

A weatherproofing system that seals jumper-to-feeder and jumper-to-antenna connectors exposed to the outside environment. GSIC is easy to install—with no tape, mastics or tools required—and is removable and reusable. Its wrap-around application requires no disconnection of the connector.

Find out more at te.com/wirelessconnectivity

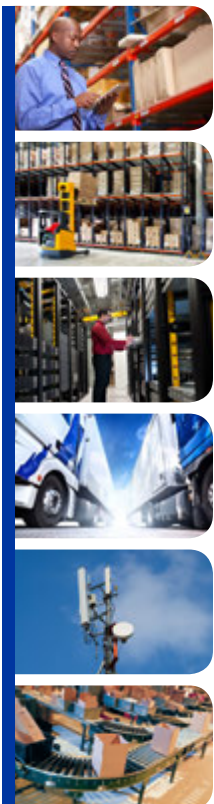




Wireless technology is driving the evolution of many of the communications networks throughout the United States. Backhaul for mobile devices, distributed antenna systems (DAS), and small cell are driving Carriers to increase infrastructure capacity. KGP Logistics provides the key products and services necessary to increase competitiveness and streamline deployment efficiencies.

Comprehensive Services to Solve Business Challenges

No one provides a more complete range of services than KGP Logistics. Our supply chain, distribution and logistics services are unmatched in the communications industry. Our full range of customizable solutions is designed to solve critical business needs by exceeding expectations.



Supply Chain Management

Inventory Management

Integrated Solutions

Transportation

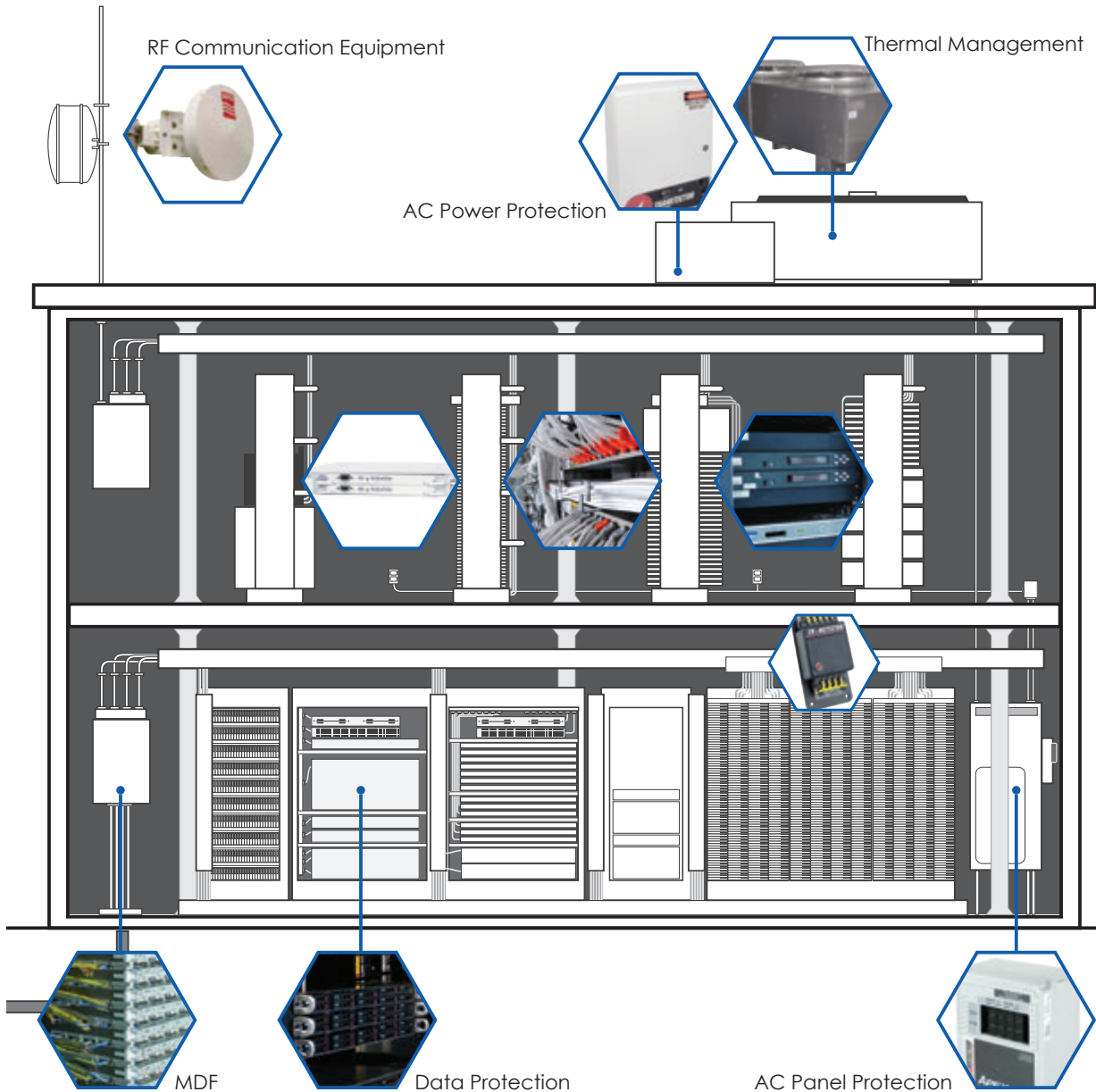
Consulting Services

Distribution





The Mobile Switching Center (MSC) is the backbone of any communications network involving traditional landline and mobile services. The MSC receives service requests from both mobile and landline callers then routes the calls between the base stations and the public switched telephone network (PSTN). KGP Logistics has over 30 years of experience providing core equipment as well as the essential services needed to manage the supply chain, integrate and install quickly and reliably. The value is truly in providing competitively priced, reliable solutions quickly to begin realizing revenue faster.



www.kgplogistics.com
800-755-1950

Tower

KGP Logistics offers a broad selection of products from leading manufacturers, custom site kitting capabilities and robust supply chain services. With a national distribution network and a legacy of solid execution, no one is more committed to solutions designed to provide operational efficiencies and expense savings for wireless operators.

Broad Selection of Tower Equipment for RF Networks

Consulting Services

Integrated Solutions

Inventory Management

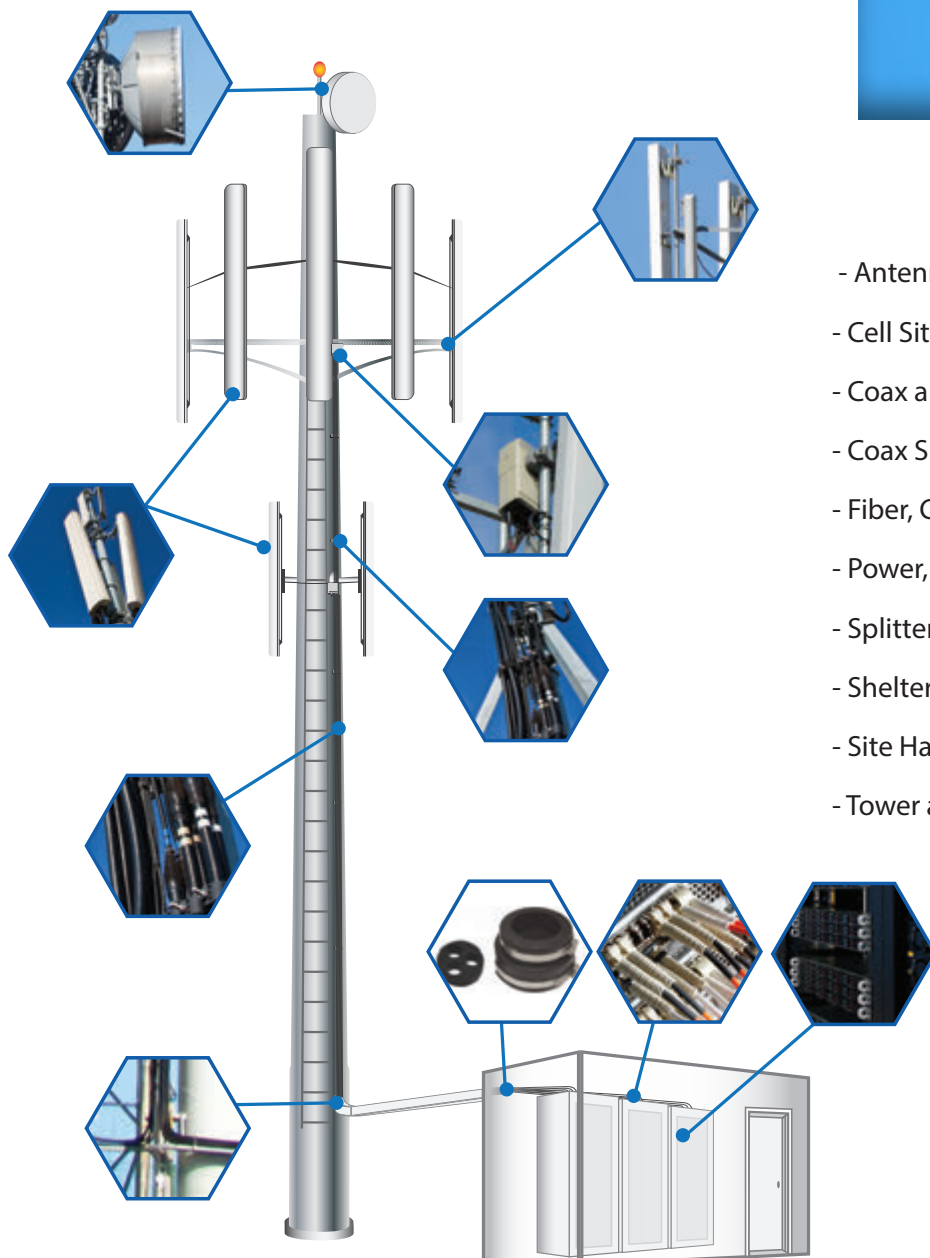
National Distribution Footprint

Site Kitting and Bundled Product Offerings

Sourcing

Supply Chain Management

Third-Party Logistics Services



- Antennas and Mounting Equipment
- Cell Site Materials
- Coax and Connectors
- Coax Support Accessories
- Fiber, Connectors, Jumpers and Panels
- Power, Grounding and Protection
- Splitters, Couplers and Attenuators
- Shelter Equipment
- Site Hardware
- Tower and Structural Steel

COMMSCOPE™

Flash Technology

JMA
Manufacturing Wireless

KATHREIN
SCALA DIVISION

MECCA

Microlab

PCTEL™

PREMIER
Communication products to depend on.™

RF
INDUSTRIES

RFS

TE
connectivity

TIMES MICROWAVE SYSTEMS



Where Technology Meets Innovation

- Kitting Service to consolidate all the necessary products and deliver to the closest staging area to the premise.
- National Distribution Center presence with 7 distribution centers and 6 integration centers located throughout the United States.
- Comprehensive Integration services needed to ensure a turn-key solution is delivered fully tested and ready to turn up on time, every time. Eliminate the need for onsite installations and testing, reducing time, expense, and unnecessary errors.
- Technical expertise with the leading Distributed Antenna system and Wi-Fi manufacturers as well as all the components necessary to build a reliable in-building or outdoor solution.
- Extensive portfolio with access to over 2,500 manufacturers that includes key, industry leading products for central office, outside plant, network electronics, customer premises and wireless applications.

KGP Logistics is experienced in providing the advanced distribution and services that augment existing capabilities, create efficiencies and, most importantly, reduce time and expense.

COMMSCOPE®

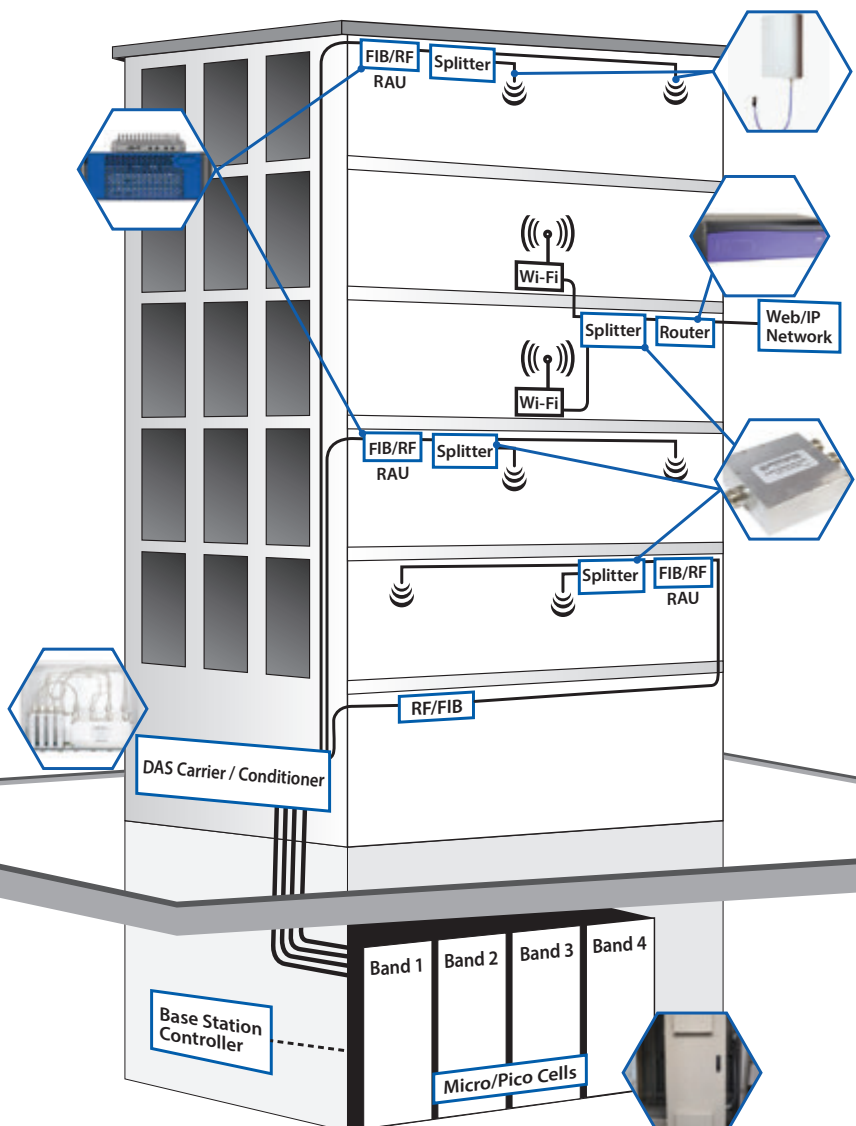
CORNING | MobileAccess
Wireless Solutions

Microlab

TEKO
TELECOM
a JMA company

TE
connectivity

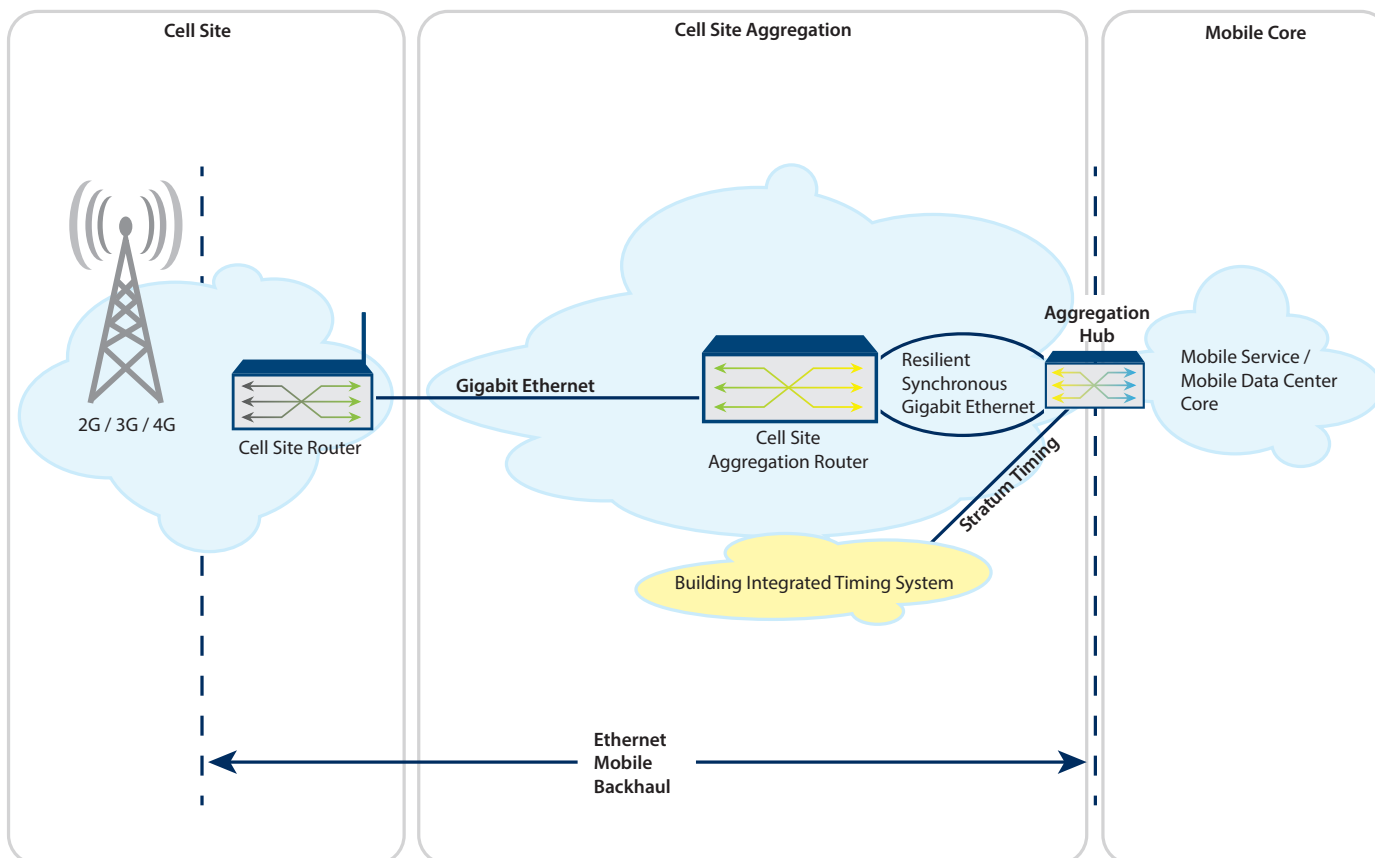
WESTELL



Mobile Backhaul

The demand for networks to perform at maximum capacity levels while meeting consumer expectations for speed and bandwidth requires service providers to consider technology solutions for both upstream and downstream traffic. KGP Logistics offers a full portfolio of backhaul solutions for copper, Ethernet, fiber, micro-wave and layer 3 MPLS/IP applications.

With long-standing relationships with the leading manufacturers as well as extensive experience integrating and installing solutions, KGP Logistics offers unmatched technology and services knowledge for backhaul and wireless deployments.



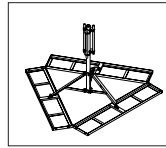
www.kgplogistics.com

800-755-1950



888-439-0050 • www.kenwood-telecom.com

Tower Site Component Manufacturing and Design



Steel and Mounts



Accessories



Grounding



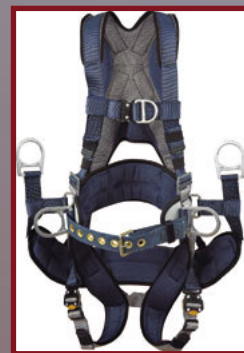
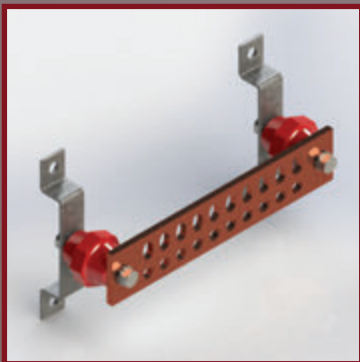
Safety

Complete Tower Site Infrastructure Solutions for over 30 years

Manufacturing • Design • Engineering • Service & Support
Custom Fabrication • Tower Modification



Site Steel • Accessories • Grounding • Hardware



Please contact **KGP Logistics** to place an order today.



800-755-1950
www.kgplogistics.com
email: contactkgp@kgptel.com

Antennas

Wireless technology is driving the evolution of many of the communications networks throughout the United States. From offloading backhaul and large venue traffic to serving remote locations more completely, wireless operators need a supply chain partner experienced and equipped to handle your speed of change.

Mobile solutions from backhaul, distributed antenna systems (DAS), and small cell are critical to increasing infrastructure capacity. KGP Logistics provides the key products and services necessary to increase competitiveness and deployments efficiencies.

Make the most of your spectrum with the use of distributed antennas or small cells in high traffic areas. KGP Logistics' portfolio includes the leading-edge wireless proliferation devices.

- ▶ Accessories - Page 9
- ▶ GPS Antennas - Page 10
- ▶ Microwave Point-to-Point - Page 10-11
- ▶ Omni Directional Antennas - Page 12-13
- ▶ Yagi Directional Antennas - Page 14



Antennas

Accessories

KGP Logistics offers a broad array of antennas for any indoor or outdoor application, including Base Station, GPS, Microwave, Omni, Yagi and DAS. KGP Logistics features the top antenna manufacturers from around the globe.



PCTEL Base Adapter Kit - MBS



PCTEL Brass MATM Mount - BMATM38



CommScope Smartbeam 1D Dual Band - SBNH-1D6565C



RFS Optimizer® - APXV9R13B-C



RFS RF X-TREME™ - APXVFRR12X-C-i20

INFRASTRUCTURE ANTENNAS		
Product ID	Part #	Description
PCTEL		
0000414677	MBS	BASE ADAPTER KIT
MOBILE ANTENNAS		
Product ID	Part #	Description
PCTEL		
0000414678	BMA38	3/8:3/4 BRASS MOUNT ONLY
0000414679	BMA-NC	BRASS MA,17'RG 58/U,NO CONN
0000414680	BMATM38	BRASS MATM MOUNT ONLY
	G	ZMAG,12'58AU,CR PL259,CHR
0000414681	G-NC	G,12'RG58A/U,NO CONN,CHR
0000414682	GPL	G, 12 FT 58U, CR MU, CHR
0000414683	K332	DISC GROUNDING
0000414684	K794	MTG KIT FOR THICK ROOFS
0000414685	MBMC-NC	WTRPF MM,17'RG58U,NO CONN,CHR
0000414686	MBM-NC	WTRPF MM,17'RG58A/U,NO CONN,CH

Base Station

BASE STATION ANTENNAS		
Product ID	Part #	Description
CommScope		
0000416816	SBNH-1D6565B	ANT;698-896/1710-2180MHZ; XPOL
0000416817	SBNH-1D6565A	ANT;698-896/1710-2180MHZ;XPOL VT
0000416818	HBX-6516DS-VTM/A1M	ANTENNA HI-BAND XPOL VT
0000416819	SBNH-1D6565C	ANT SMARTBEAM 1D DUALBAND
0000416820	LNx-6515DS-VTM	ANTENNA LOW BAND VT
0000416821	HBX-6517DS-VTM	ANTENNA HI-BAND XPOL VT
0000416822	LNx-6513DS-VTM	ANTENNA DUALPOL 698-896MHZ VT
0000416823	LNx-6514DS-VTM	ANTENNA LOW BAND VT
0000416824	HBXX-6517DS-VTM	ANTENNA HI-BAND XPOL VT
0000416825	SBNH-1D4545A	ANT XPOL SMARTBEAM
0000416826	SBNH-1D8585B	ANT 698-896/1710-2180MHZ XPOL VT
0000416827	SBNH-1D8585C	ANT 698-896/1710-2180MHZ XPOL VT
0000416828	SBNHH-1D65B	SBNHH-1D65B ANTENNA
0000416829	SBNHH-1D65A	ANT SMARTBEAM TRIBAND
0000416830	SBNHH-1D65C	ANT SMARTBEAM TRIBAND
RFS		
0000414768	APXV9R13B-C	Optimizer® Cellular Dual Polarized Dual Band Antenna, 790-2200, 65deg, 14-18dBi, 1.4m, VET, 0-10deg
0000414769	APXV9R20B-C	Optmizer® Cellular Dual Polarized Dual Band Antenna, 790-2200, 65deg, 16.2-19dBi, 2.0m, VET, 0-10deg
0000414770	APXVFRR12X-C-i20	RF X-TREME™ Cross Polarized Triple Band Antenna, 698-2170MHz, 65deg, 13.3/16.0/16.3dBi, 1.2m, VET, 0-8deg
0000416845	APXVFW-W12X-C-NA20	RF X-TREME Cross Polarized Triple Band Antenna 698-2360MHz 65deg 13.8/15.7/16.3dBi 4ft VET
0000414771	APXVFRR18X-C-i20	RF X-TREME™ Cross Polarized Triple Band Antenna, 698-2170MHz, 65deg, 15.3/17.8/18.1dBi, 1.8m, VET, 0-10deg

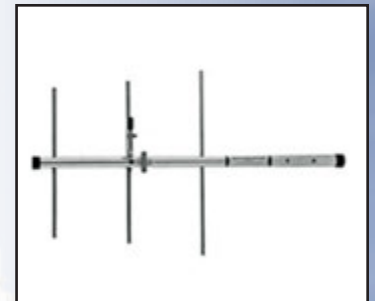
INFRASTRUCTURE ANTENNAS		
Product ID	Part #	Description
PCTEL		
0000414687	MYA93012	896-970,11 DB,12 ELEMENT YAGI
0000414688	MYA9306	896-970,9DB,6 ELEMENT YAGI,CHR

GPS Antennas

GPS/AVIATION SPECIAL PURPOSE ANTENNAS		
Product ID	Part #	Description
PCTEL		
0000414689	1271FW	1302INIARINC, PASSIVE, TNC
0000414690	5012D-U	GPS RECEIVER +ANTENNA,3M,USB
0000414691	GPS-TMG-26N	GPS TIMING ANT, 26DB
0000414692	GPS-TMG-HR-26N	GPS L1 TIMING ANT, 26 DB, HIGH REJECTION
	GPS-TMG-HR-26NCM	GPS TIMING ANT, 26 DB, HR, RED COLLAR MNT
MOBILE ANTENNAS		
Product ID	Part #	Description
PCTEL		
0000414693	GPSGSMMSMA	824-894, 1710-1990 MHZ, GPS STUD MNT ANT
0000414694	GPS-NMO	GPS ANTENNA, ACTIVE, NMO MOUNT, LOW PROFILE, 28DB, BLACK
0000414695	GPS-NMO-W	GPS ANTENNA, ACTIVE, NMO MOUNT, LOW PROFILE, 28DB, WHITE

Microwave - Point-to-Point

POINT-TO-POINT MICROWAVE ANTENNAS		
Product ID	Part #	Description
CommScope		
0000416831	SHP3-11W	1.0 m 3 ft Sentinel High Performance Antenna single-polarized 10.125–11.700 GHz
0000416832	SHP3-13	1.0 m 3 ft Sentinel High Performance Antenna single-polarized 12.700–13.250 GHz
0000416833	SHP3-15	1.0 m 3 ft Sentinel High Performance Antenna single-polarized 14.400–15.350 GHz
0000416834	SHP3-18	1.0 m 3 ft Sentinel High Performance Antenna single-polarized 17.700–19.700 GHz
0000416835	SHP3-23	1.0 m 3 ft Sentinel High Performance Antenna single-polarized 21.200–23.600 GHz
0000416836	SHP3-26	1.0 m 3 ft Sentinel High Performance Antenna single-polarized 24.250–26.500 GHz
0000416837	SHP3-6W	1.0 m 3 ft Sentinel High Performance Antenna single-polarized 5.925–7.125 GHz
0000416838	SHPX3-11W	1.0 m 3 ft Sentinel High Performance Antenna dual-polarized 10.125–11.700 GHz
0000416839	SHPX3-13	1.0 m 3 ft Sentinel High Performance Antenna dual-polarized 12.700–13.250 GHz
0000416840	SHPX3-15	1.0 m 3 ft Sentinel High Performance Antenna dual-polarized 14.400–15.350 GHz
0000416841	SHPX3-18	1.0 m 3 ft Sentinel High Performance Antenna dual-polarized 17.700–19.700 GHz
0000416842	SHPX3-23	1.0 m 3 ft Sentinel High Performance Antenna dual-polarized 21.200–23.600 GHz
0000416843	SHPX3-26	1.0 m 3 ft Sentinel High Performance Antenna dual-polarized 24.250–26.500 GHz
0000416844	SHPX3-6W	1.0 m 3 ft Sentinel High Performance Antenna dual-polarized 5.925–7.125 GHz



PCTEL Element Yagi - MYA9306



PCTEL GPS Receiver +Antenna - 5012D-U



PCTEL GPS Antenna, Active, NMO Mount - GPS-NMO



RFS TrunkLine Antenna - DA8-59AC



RFS CompactLine Antenna - SB1-190BB

Microwave - Point-to-Point - Continued



RFS CompactLine Antenna - SB3-105BC



RFS TrunkLine Antenna - UA10-65AC



RFS PrimeLine Antenna - UXA10-W59AC



RFS PrimeLine - UXA8-59BC



RFS PrimeLine - UXA8-W59AC

POINT-TO-POINT MICROWAVE ANTENNAS

Product ID	Part #	Description
RFS		
0000414772	DA12-59AC	TrunkLine Antenna, High Performance, Single Polarized, 12 ft
0000414773	DA8-59AC	TrunkLine Antenna, High Performance, Single Polarized, 8 ft
0000414774	DAX10-59AC	TrunkLine Antenna, High Performance, Dual Polarized, 10 ft
0000414775	DAX8-59AC	TrunkLine Antenna, High Performance, Dual Polarized, 8 ft
0000414776	MTS-XY-A20	Mechanical Tilt Sensor, AISG 2.0 Compliant, Dual Axis
0000414777	PAD10-59AC	TrunkLine Antenna, Standard (FCC 101, Cat A) , Single Polarized, 10 ft
0000414778	PAD10-65AC	TrunkLine Antenna, Standard (FCC 101, Cat A) , Single Polarized, 10 ft
0000414779	PAD10-W59AC	TrunkLine Antenna, Standard (FCC 101, Cat A) , Single Polarized, 10 ft
0000414780	PAD6-59BC	TrunkLine Antenna, Standard (FCC 101, Cat A) , Single Polarized, 6 ft
0000414781	PAD6-65BC	TrunkLine Antenna, Standard (FCC 101, Cat A) , Single Polarized, 6 ft
0000414782	PAD6-W59BC	TrunkLine Antenna, Standard (FCC 101, Cat A) , Single Polarized, 6 ft
0000414783	PAD8-59AC	TrunkLine Antenna, Standard (FCC 101, Cat A) , Single Polarized, 8 ft
0000414784	PAD8-65AC	TrunkLine Antenna, Standard (FCC 101, Cat A) , Single Polarized, 8 ft
0000414785	PAD8-W59AC	TrunkLine Antenna, Standard (FCC 101, Cat A) , Single Polarized, 8 ft
0000414786	PADX6-U57AC	TrunkLine Antenna, Standard (FCC 101, Cat A) , Dual Polarized, 6 ft
0000414787	PADX8-U57AC	TrunkLine Antenna, Standard (FCC 101, Cat A) , Dual Polarized, 8 ft
0000414788	SB1-190BB	CompactLine Antenna, Ultra High Performance, Single Polarized, 1 ft
0000414789	SB1-220BB	CompactLine Antenna, Ultra High Performance, Single Polarized, 1 ft
0000414790	SB2-105CC	CompactLine Antenna, Ultra High Performance, Single Polarized, 2 ft
0000414791	SB3-105BC	CompactLine Antenna, Ultra High Performance, Single Polarized, 3 ft
0000414792	SB4-W100AC	CompactLine Antenna, Ultra High Performance, Single Polarized, 4 ft
0000414793	SB4-W60AC	CompactLine Antenna, Ultra High Performance, Single Polarized, 4 ft
0000414794	SB6-W60BC	CompactLine Antenna, Ultra High Performance, Single Polarized, 6 ft
0000414795	SBX4-W60AC	CompactLine Antenna, Ultra High Performance, Dual Polarized, 4 ft
0000414796	SBX6-W60BC	CompactLine Antenna, Ultra High Performance, Dual Polarized, 6 ft
0000414797	SC2-220AB	CompactLine Easy Antenna, Ultra High Performance, Single Polarized, 2 ft
0000414798	SC2-W100AC	CompactLine Easy Antenna, Ultra High Performance, Single Polarized, 2 ft
0000414799	SC3-190AB	CompactLine Easy Antenna, Ultra High Performance, Single Polarized, 3 ft
0000414800	SC3-W100AC	CompactLine Easy Antenna, Ultra High Performance, Single Polarized, 3 ft
0000414801	UA10-65AC	TrunkLine Antenna, Ultra-High Performance, Single Polarized, 10 ft
0000414802	UA12-65AC	TrunkLine Antenna, Ultra-High Performance, Single Polarized, 12 ft
0000414803	UA8-65AC	TrunkLine Antenna, Ultra-High Performance, Single Polarized, 8 ft
0000414804	UXA10-59BC	PrimeLine Antenna, Ultra High Performance, High Cross Polar Discrimination, Dual Polarized, 10 ft
0000414805	UXA10-W59AC	PrimeLine Antenna, Ultra High Performance, High Cross Polar Discrimination, Dual Polarized, 10 ft
0000414806	UXA12-W59AC	PrimeLine Antenna, Ultra High Performance, High Cross Polar Discrimination, Dual Polarized, 12 ft
0000414807	UXA6-59CC	PrimeLine Antenna, Ultra High Performance, High Cross Polar Discrimination, Dual Polarized, 6 ft
0000414808	UXA6-U57AC	PrimeLine Antenna, Ultra High Performance, High Cross Polar Discrimination, Dual Polarized, 8 ft
0000414809	UXA6-W59BC	PrimeLine Antenna, Ultra High Performance, High Cross Polar Discrimination, Dual Polarized, 6 ft
0000414810	UXA8-59BC	PrimeLine Antenna, Ultra High Performance, High Cross Polar Discrimination, Dual Polarized, 8 ft
0000414811	UXA8-U57AC	PrimeLine Antenna, Ultra High Performance, High Cross Polar Discrimination, Dual Polarized, 6 ft
0000414812	UXA8-W59AC	PrimeLine Antenna, Ultra High Performance, High Cross Polar Discrimination, Dual Polarized, 8 ft

Omni

INFRASTRUCTURE ANTENNAS		
Product ID	Part #	Description
CommScope		
0000416769	ASP705K	Omni Ant 450–470MHz 360 BWh fixed EDT
0000416770	ASP7A	Omni Gnd Plane Ant 108–512MHz 360 BWh fixed EDT
0000416771	ASPA685	Omni Ant 151–158MHz 360 BWh fixed EDT
0000416772	ASPB685	Omni Ant 155–163MHz fixed EDT
0000416773	DB201-L	Omni Gnd Plane Ant 30–50MHz fixed EDT
0000416774	DB201-M	Omni Gnd Plane Ant 144–174MHz fixed EDT
0000416775	DB201-N	Omni Gnd Plane Ant 406–512MHz fixed EDT
0000416776	DB201-P	Omni Gnd Plane Ant 450–470MHz fixed EDT
0000416777	DB222-A	Omni Exposed Dipole Ant 150–158MHz fixed EDT
0000416778	DB222-B	Omni Exposed Dipole Ant 158–166MHz fixed EDT
0000416779	DB224-A	Omni Exposed Dipole Ant 150–160MHz fixed EDT
0000416780	DB224-B	Omni Exposed Dipole Ant 155–165MHz fixed EDT
0000416781	DB224-C	Omni Exposed Dipole Ant 164–174MHz fixed EDT
0000416782	DB224-E	Omni Exposed Dipole Ant 138–150MHz fixed EDT
0000416783	DB228-A	Omni Exposed Dipole Ant 150–160MHz fixed EDT
0000416784	DB264-A	Omni Exposed Dipole Ant 150–160MHz fixed EDT
0000416785	DB404-B	Omni Exposed Dipole Ant 450–470MHz fixed EDT
0000416786	DB408-A	Omni Exposed Dipole Ant 406–420MHz fixed EDT
0000416787	DB408-B	Omni Exposed Dipole Ant 450–470MHz fixed EDT
0000416788	DB420-B	Omni Exposed Dipole Ant 450–470MHz fixed EDT
0000416789	DB583-XC	824–896MHz 360 BWh fixed EDT fits on 38-51mm (1 1/2-2") OD pipe
0000416790	DB583-XT	806–869MHz 360 BWh fixed EDT fits on 38-51mm (1 1/2-2") OD pipe
0000416791	DB583-Y	890–960MHz 360 BWh fixed EDT fits on 38-51mm (1 1/2-2") OD pipe
0000416792	DB583E-SN	Omni Ant 698–790MHz 360 BWh fixed EDT
0000416793	DB586-XC	824–896MHz 360 BWh fixed EDT fits on 38-51mm (1 1/2-2") OD pipe
0000416794	DB586-XT	806–869MHz 360 BWh fixed EDT fits on 38-51mm (1 1/2-2") OD pipe
0000416795	DB586-Y	890–960MHz 360 BWh fixed EDT fits on 38-51mm (1 1/2-2") OD pipe
0000416796	DB589-Y	890–960MHz 360 BWh fixed EDT fits on 38-51mm (1 1/2-2") OD pipe
0000416797	DB589T3-Y	Omni Ant 890–960MHz 360 BWh fits on 38-51mm (1-1/2-2") OD pipe
0000416798	DB616E-BC	Omni Ant 160–174MHz 360 BWh fixed EDT
0000416799	DB630-C	Omni Ant 450–482MHz 360 BWh fixed EDT
0000416800	DB633-C	Omni Ant 450–482MHz 360 BWh fixed EDT
0000416801	DB636-C	Omni Ant 450–482MHz 360 BWh fixed EDT
0000416802	DB638NSE-C	Omni Ant 450–482MHz 360 BWh fixed EDT
0000416803	DB806-A	Omni Ant 740–806MHz 360 BWh fixed EDT
0000416804	DB809KE-SY	Omni Ant 870–960MHz 360 BWh fixed EDT
0000416805	DB809KE-XC	Omni Ant 824–896MHz 360 BWh fixed EDT
0000416806	DB809KE-XT	Omni Ant 806–869MHz 360 BWh fixed EDT
0000416807	DB809KT3E-XC	Omni Ant 824–896MHz 360 BWh fixed EDT
0000416808	DB809KT3E-Y	Omni Ant 885–960MHz 360 BWh fixed EDT
0000416809	DB810E-PS	Omni Ant 746–869MHz 360 BWh fixed EDT
0000416810	DB810KE-A	Omni Ant 746–776MHz 360 BWh fixed EDT
0000416811	DB810KE-SY	Omni Ant 870–960MHz 360 BWh fixed EDT
0000416812	DB810KE-XC	Omni Ant 824–896MHz 360 BWh fixed EDT
0000416813	DB810KE-XT	Omni Ant 806–869MHz 360 BWh fixed EDT
0000416814	DB812KE-XT	Omni Ant 806–869MHz 360 BWh fixed EDT
0000416815	DB910CE-M	Omni Ant 1850–1990MHz 360 BWh fixed EDT



CommScope- ASP7A



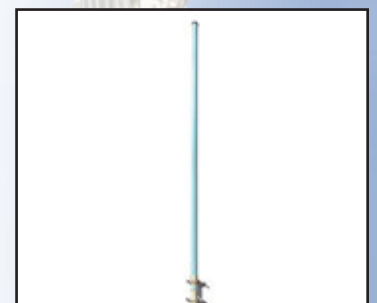
CommScope Exposed Dipole-DB224-B



CommScope 824-896MHz -DB583-XC



CommScope 450-482MHz-DB630-C



CommScope 806-869MHz -DB-810KE-XT



PCTEL Antenna, Omni - BOA9028



PCTEL Dual Band Omni - MHODB-24490507NM



RFS Penetrator Antenna - BMR12-A-B1



RFS Penetrator Antenna - BMR8-O-B1



RFS Penetrator Antenna - BPS10-A-B1

Omni - Continued

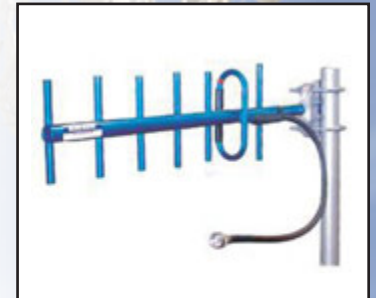
INFRASTRUCTURE ANTENNAS		
Product ID	Part #	Description
PCTEL		
0000414696	BOA9028	ANTENNA, OMNI, 902-928MHZ, 8 DBI GAIN, NF CONNECTOR
0000414700	MHODB24490507NM	2.4-2.5/4.94-5.925 GHZ DUAL BAND OMNI, N MALE, VENTED CAP
RFS		
0000416900	10022-1	Omnidirectional Fiberglass Antenna 806-880 2.1dBi N Female
0000416901	10022-2	Omnidirectional Fiberglass Antenna 836-896 2.1dBi N Female
0000416902	10022-3	Omnidirectional Fiberglass Antenna 880-960 2.1dBi N Female
0000416910	1610-1	Omnidirectional Collinear Antenna 806-866 6.1dBi N Female
0000416911	1610-2	Omnidirectional Collinear Antenna 820-880 6.1dBi N Female
0000416912	1610-3	Omnidirectional Collinear Antenna 836-896 6.1dBi N Female
0000416913	1610-4	Omnidirectional Collinear Antenna 896-960 6.1dBi N Female
0000416914	BMR10-A-B1	Penetrator Antenna 806-869 14.4dBi 220deg
0000416915	BMR10-B-B1	Penetrator Antenna 806-869 16.1dBi 140deg
0000416916	BMR10-D-B1	Penetrator Antenna 806-869 16.4dBi 120deg
0000416917	BMR10-H-B1	Penetrator Antenna 806-869 15.5dBi Dual
0000416918	BMR10-O-B1	Penetrator Antenna 806-869 12.1dBi 360deg
0000416919	BMR10S-A-B1	Penetrator Antenna 806-869 14.4dBi 220deg
0000416920	BMR10S-O-B1	Penetrator Antenna 806-869 12.1dBi 360deg
0000416921	BMR12-A-B1	Penetrator Antenna 806-869 16.4dBi 220deg
0000416922	BMR12-B-B1	Penetrator Antenna 806-869 18.1dBi 140deg
0000416923	BMR12-D-B1	Penetrator Antenna 806-869 18.4dBi 120deg
0000416924	BMR12-H-B1	Penetrator Antenna 806-869 17.5dBi Dual
0000416925	BMR12-O-B1	Penetrator Antenna 806-869 14.1dBi 360deg
0000416926	BMR12S-A-B1	Penetrator Antenna 806-869 16.4dBi 220deg
0000416927	BMR12S-B-B1	Penetrator Antenna 806-869 18.1dBi 140deg
0000416928	BMR12S-H-B1	Penetrator Antenna 806-869 17.5dBi Dual
0000416929	BMR12S-O-B1	Penetrator Antenna 806-869 14.1dBi 360deg
0000416930	BMR6-A-B1	Penetrator Antenna 806-869 10.4dBi 220deg
0000416931	BMR6-B-B1	Penetrator Antenna 806-869 12.1dBi 140deg
0000416932	BMR6-D-B1	Penetrator Antenna 806-869 12.4dBi 120deg
0000416933	BMR6-H-B1	Penetrator Antenna 806-869 11.5dBi Dual
0000416934	BMR6-O-B1	Penetrator Antenna 806-869 8.1dBi 360deg
0000416935	BMR6S-B-B1	Penetrator Antenna 806-869 12.1dBi 140deg
0000416936	BMR8-A-B1	Penetrator Antenna 806-869 12.4dBi 220deg
0000416938	BMR8-D-B1	Penetrator Antenna 806-869 14.4dBi 120deg
0000416939	BMR8-H-B1	Penetrator Antenna 806-869 13.5dBi Dual
0000416940	BMR8-O-B1	Penetrator Antenna 806-869 10.1dBi 360deg
0000416941	BMR8S-A-B1	Penetrator Antenna 806-869 12.4dBi 220deg
0000416942	BMR8S-B-B1	Penetrator Antenna 806-869 14.1dBi 140deg
0000416943	BLR10S-A-B1	Penetrator Antenna 794-824 14.4dBi 220deg
0000416944	BLR12S-A-B1	Penetrator Antenna 794-824 16.4dBi 220deg
0000416945	BLR12S-H-B1	Penetrator Antenna 794-824 17.5dBi Dual
0000416946	BLR8S-A-B1	Penetrator Antenna 794-824 12.4dBi 220deg
0000416947	BLR8S-O-B1	Penetrator Antenna 794-824 10.1dBi 360deg
0000416948	BPS10-A-B1	Penetrator Antenna 746-806 14.4dBi 220deg
0000416949	BPS10-B-B1	Penetrator Antenna 746-806 16.1dBi 140deg
0000416950	BPS10-D-B1	Penetrator Antenna 746-806 16.4dBi 120deg
0000416951	BPS10-H-B1	Penetrator Antenna 746-806 15.5dBi Dual
0000416952	BPS10-O-B1	Penetrator Antenna 746-806 12.1dBi 360deg

Yagi

INFRASTRUCTURE ANTENNAS		
Product ID	Part #	Description
PCTEL		
0000414697	BGYD890K	890-960 MHZ, 10 DBD 7 ELEMENT YAGI, N FEMALE 2' JUMPER
0000414698	BMYD890K	890-960 MHZ, 10 DBD 7 ELEMENT YAGI, N FEMALE, 2' JUMPER
RFS		
0000416903	10108-1	Directional Yagi Antenna 806-894 12.1dBi N Female
0000416904	10108-2	Directional Yagi Antenna 880-960 12.1dBi N Female
0000416905	10108-3	Directional Yagi Antenna 806-941 12.1dBi N Female
0000416906	10108D-1	Directional Yagi Antenna 806-894 15.1dBi N Female
0000416907	10108D-2	Directional Yagi Antenna 880-960 15.1dBi N Female
0000416908	10212-1	Directional Low Gain Yagi Antenna 806-896 7.6dBi N Female
0000416909	10212-2	Directional Low Gain Yagi Antenna 900-960 7.6dBi N Female



PCTEL 10 DBD 7 Element Yagi - BGYD890K



PCTEL 10 DBD 7 Element Yagi - BMYD890K



RFS Ddirectional Yagi - 10108-1



RFS Ddirectional Yagi - 10108D-1



RFS Ddirectional Yagi - 10212-2



Install Confidence

Interconnect Solutions for Wireless Infrastructure and Distributed Antenna Systems (DAS)

- Low PIM Coaxial Cable Assemblies, Adapters, Power Splitters, Couplers, Loads
- Plenum Rated, Low PIM, Low Loss Cable Assemblies
- Low PIM Coaxial Adapters
- OptiFlex™ Hybrid, Fiber Optic Trunk, Fiber Patch, Indoor or Outdoor DC Power Cables
- RF Connectors, Adapters, Universal Adapter System, Cable Assemblies, Tools
- Ruggedized Fiber Jumpers
- Power and RET Cables



All low PIM products are 100% tested to assure performance

RF
INDUSTRIES
NASDAQ: RFIL
Connecting a Wireless World

Coax Support

KGP Logistics works with Original Equipment Manufacturers to deliver ancillary products. KGP Logistics has a vast portfolio from basic tools and components to outside plant and network electronics.

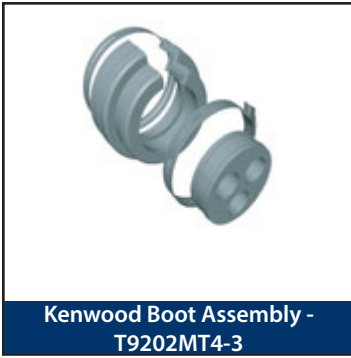
A full range of products and services are available through KGP Logistics from the hub to the antenna and all the components in between.

- ▶ Boot Assembly - Page 16-17
- ▶ Entry Panel - Page 18
- ▶ Hangers - Page 19
- ▶ Hoisting Grip - Page 20
- ▶ Coax - Page 21-23
- ▶ Connectors - Page 25-30
- ▶ Grounding - Page 31-33
- ▶ Jumper - Page 34-36
- ▶ Tools - Page 38-41
- ▶ Weatherproofing - Page 42

Coax Support

KGP Logistics stocks the coaxial cable support accessories that wireless carriers and integrators require to complete the project. From hoisting grips and hangers to boot assemblies and entry panels, KGP Logistics has the product solution for optimal performance.

Boot Assembly



Kenwood Boot Assembly - T9202MT4-3



Kenwood 4" Blank Boot Assembly - T9214MT



RFS 4in Feed Through Boot Assembly - BOOT4-046



RFS 4in Feed Through Boot Assembly - BOOT4-150



Valmont Boot Assembly 4" - BA123

Product ID	Part #	Description
Kenwood		
0000414599	T9202MT4-1	4" BOOT ASSEMBLY, W/ 1 HOLE FOR 1/2"
0000414600	T9202MT4-3	4" Boot Assy w/ 3-hole for 1/2"
0000414601	T9206MT4-1	4in Boot Assy 1-5/8in
0000414602	T9214MT	4 BOOT ASSEMBLY CUSHION NOT INCLUDED
0000414603	T9216MT	5 BOOT ASSEMBLY CUSHION NOT INCLUDED
0000414604	T9222MT4-3	4IN Boot Assy, (3) 7/8IN
0000414605	T9283MF4	4" Blank Boot Assembly
RFS		
0000416848	BOOT4-046	4in Feed Through Boot Assembly w/1 hole for E46 Waveguide
0000416849	BOOT4-060	4in Feed Through Boot Assembly w/1 hole for E60
0000416850	BOOT4-065	4in Feed Through Boot Assembly w/1 hole for E65
0000416851	BOOT4-070	4in Feed Through Boot Assembly w/1 hole for E70
0000416852	BOOT4-078	4in Feed Through Boot Assembly w/1 hole for E78
0000416853	BOOT4-105	4in Feed Through Boot Assembly w/1 hole for E105
0000416854	BOOT4-114-1	Feed through assemblies for 1 1/4" coaxial cable 102mm (4") 1-entry
0000416855	BOOT4-12-1	Feed through assemblies for 1/2" coaxial cable 102mm (4") 1-entry
0000416856	BOOT4-12-2	Feed through assemblies for 1/2" coaxial cable 102mm (4") 2-entries
0000416857	BOOT4-12-3	Feed through assemblies for 1/2" coaxial cable 102mm (4") 3-entries
0000416858	BOOT4-12-4	Feed through assemblies for 1/2" coaxial cable 102mm (4") 4-entries
0000416860	BOOT4-150	4" Feed Through Boot Assembly w/1 hole for E150 Waveguide
0000416861	BOOT4-158-1	Feed through assemblies for 1 5/8" coaxial cable 102mm (4") 1-entry
0000416862	BOOT4-185	4" Feed Through Boot Assembly w/1 hole for E185
0000416863	BOOT4-214-1	Feed through assemblies for 2 1/4" coaxial cable 102mm (4") 1-entry
0000416864	BOOT4-58-1	Feed through assemblies for 5/8" coaxial cable 102mm (4") 1-entry
0000416865	BOOT4-58-3	Feed through assemblies for 5/8" coaxial cable 102mm (4") 3-entries
0000416866	BOOT4-78-1	Feed through assemblies for 7/8" coaxial cable 102mm (4") 1-entry
0000416867	BOOT4-78-2	Feed through assemblies for 7/8" coaxial cable 102mm (4") 2-entries
0000416868	BOOT4-78-3	Feed through assemblies for 7/8" coaxial cable 102mm (4") 3-entries
0000416869	BOOT4-78-4	Feed through assemblies for 7/8" coaxial cable 102mm (4") 4-entries
Valmont		
0000414987	BA12	Boot Assemblies, 4" Boot, 1/2" Coax, (1) Hole
0000414988	BA122	Boot Assemblies, 4" Boot, 1/2" Coax (2) Hole
0000414989	BA123	Boot Assemblies, 4" Boot, 1/2" Coax (3) Hole
0000402907	BA124	Boot Assemblies, 4" Boot, 1/2" Coax (4) Hole
0000414990	BA143F	Boot Assemblies, 4" Boot, 1/4" Flex Coax (3) Hole
0000414991	BA14F	Boot Assemblies, 4" Boot, 1/4" Flex Coax (1) Hole
0000414992	BA158	Boot Assemblies, 4" Boot, 1-5/8" Coax (1) Hole
0000414993	BA78	Boot Assemblies, 4" Boot, 7/8" Coax (1) Hole
0000414994	BA782	Boot Assemblies, 4" Boot, 7/8" Coax (2) Hole
0000414995	BA783	Boot Assemblies, 4" Boot, 7/8" Coax (3) Hole
0000414996	BA784	Boot Assemblies, 4" Boot, 7/8" Coax (4) Hole
0000414997	BALX4	Boot Assemblies, 4" Boot, LMR-400, 3/8" Flex (1) Hole
0000414998	BALX42	Boot Assemblies, 4" Boot, LMR-400, 3/8" Flex (2) Hole
0000414999	BALX44	Boot Assemblies, 4" Boot, LMR-400, 3/8" Flex (4) Hole
0000373322	BAZERO	Boot Assemblies, 4" Boot, Blank - No Holes
0000415000	BG1583	Boot Assemblies, 8-5/8" Boot, 1-5/8" Coax (3) Holes
0000415001	BG1584	Boot Assemblies, 8-5/8" Boot, 1-5/8" Coax (4) Holes
0000415002	BG784	Boot Assemblies, 8-5/8" Boot, 7/8" Coax (4) Holes
0000415003	BGZERO	Boot Assemblies, 8-5/8" Boot, Blank - No Holes

CUSHION BOOT ASSEMBLY KIT		
Product ID	Part #	Description
Superior Essex		
0000414824	LBA-12-1A	Boot Assembly and Standard Cushion Insert
000041482	LBA-12-2A	Boot Assembly and Standard Cushion Insert
0000414825	LBA-12-3A	Boot Assembly and Standard Cushion Insert
0000414826	LBA-12-4A	Boot Assembly and Standard Cushion Insert
0000414827	LBA-12-5A	Boot Assembly and Standard Cushion Insert
0000414828	LBA-22-1A	Boot Assembly and Standard Cushion Insert
0000414829	LBA-22-2A	Boot Assembly and Standard Cushion Insert
0000414830	LBA-22-3A	Boot Assembly and Standard Cushion Insert
0000414831	LBA-22-4A	Boot Assembly and Standard Cushion Insert
0000414832	LBA-33-1A	Boot Assembly and Standard Cushion Insert
0000414833	LBA-42-1A	Boot Assembly and Standard Cushion Insert
0000414834	LBA-57-1A	Boot Assembly and Standard Cushion Insert



Superior Essex Boot Assembly & Standard Cushion Insert - LBA-12-3A

CABLE SUPPORT, BOOT CUSHION		
Product ID	Part #	Description
Kenwood		
0000414606	T9240MT	BOOT CUSHION INSERTS 1 1/4 1 HOLE
0000414607	T9242MT1	BOOT CUSHION INSERTS 1/2 1 HOLE
0000414608	T9242MT2	BOOT CUSHION INSERTS 1/2 2 HOLE
0000414609	T9242MT3	BOOT CUSHION INSERTS 1/2 3 HOLE
0000414610	T9242MT4	BOOT CUSHION INSERTS 1/2 4 HOLE
0000414611	T9246MT1	BOOT CUSHION INSERTS 1 5/8 1 HOLE
0000414612	T9249MT1	BOOT CUSHION INSERTS 2 1/4 1 HOLE
0000414613	T9251MT1	BOOT CUSHION INSERTS 3/8 1 HOLE
0000414614	T9251MT3	BOOT CUSHION INSERTS 3/8 3 HOLE
0000414615	T9251MT9	BOOT CUSHION INSERTS 3/8 9 HOLE
0000414616	T9259MT1	1-Hole Cushion Only for 7/8" Coax
0000414616	T9259MT1	BOOT CUSHION INSERTS 7/8 1 HOLE
0000414617	T9259MT2	2-Hole Cushion Only for 7/8" Coax
0000414617	T9259MT2	BOOT CUSHION INSERTS 7/8 2 HOLE
0000414618	T9259MT3	BOOT CUSHION INSERTS 7/8 3 HOLE
0000414619	T9259MT4	BOOT CUSHION INSERTS 7/8 4 HOLE
0000414620	T9264MT	BOOT CUSHION INSERTS - NO HOLES
RFS		
0000416871	BOOT-CP-12	Cushin plug for 1/2in feed through assemblies
0000416873	BOOT-CP-78	Cushin plug for 7/8in feed through assemblies



Superior Essex Boot Assembly & Standard Cushion Insert - LBA-22-3A

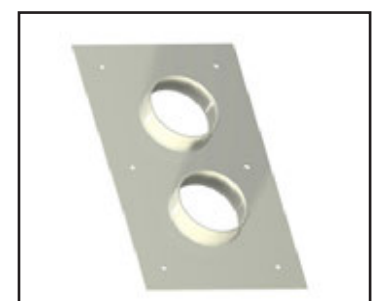


Kenwood Entry Panel - T9600MT1X6

COAX SUPPORT, ENTRY PANEL		
Product ID	Part #	Description
Kenwood		
0000414621	T3600KTA	DOGHOUSE ROOFTOP ENTRY PANEL
0000414622	T9600MT1X4	ENTRY PANEL 4-PORT 9.5 X 25.5
0000414623	T9600MT1X6	ENTRY PANEL 6-PORT 9.5 X 36.5
0000414624	T9600MT2X2	ENTRY PANEL 4-PORT 17.5 X 17.5
0000414625	T9600MT2X2	ENTRY PANEL 6-PORT 17.5 X 23
0000414626	T9600MT2X4	ENTRY PANEL 8-PORT 17.5 X 25.5
RFS		
0000416874	FTP4-1X1	Feed through entry panel 102mm (4in) 1 hole 1x1
0000416875	FTP4-1X2	Feed through entry panel 102mm (4in) 2 holes 1x2
0000416877	FTP4-1X4	Feed through entry panel 102mm (4in) 4 holes 1x4
0000416878	FTP4-2X2	Feed through entry panel 102mm (4in) 4 holes 2x2
0000416879	FTP4-2X3	Feed through entry panel 102mm (4in) 6 holes 2x3
0000416880	FTP4-2X4	Feed through entry panel 102mm (4in) 8 holes 2x4
0000416884	FTP4-3X4	Feed through entry panel 102mm (4in) 12 holes 3x4
0000416890	WF-070	Wall Feed Thru for FLEXWELL Elliptical Waveguide E70
Valmont		
0000355788	CAP4	Aluminum Entry Panels, Replacement Sealing Caps
0000415004	E1118	Aluminum Entry Panels, 4" Ports, 3 X 4
0000297140	E1447	Aluminum Entry Panels, 4" Ports, 4 X 4
0000415005	E1448	Aluminum Entry Panels, 4" Ports, 1 X 2
0000403280	E220	Aluminum Entry Panels, 4" Ports, 1 X 1
0000415006	E575	Aluminum Entry Panels, 4" Ports, 1 X 4
0000415007	E576	Aluminum Entry Panels, 4" Ports, 2 X 4



RFS Wall Feed Through for FLEXWELL - WF-070



Valmont Aluminum Entry Panel - E1448

Hangers



CommScope SNAPSTAK Hanger - SSH-12



Kenwood Butterfly Hanger - T9300MT114



RFS Snap-In Hangers - SNAP-12



Superior Essex Stackable Snap-In Hanger Kit - L-SH-U33

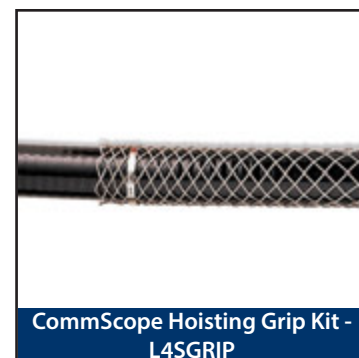


Valmont Snap-In Hangers - 12SH-3

Product ID	Part #	Description
CommScope		
0000404805	SSH-12	HANGER, SNAPSTAK, FOR 1/2" C
0000414535	SSH-78	HANGER, SNAPSTAK, FOR 7/8" C
0000404806	SSH-114	HANGER, SNAPSTAK, FOR 1-1/4
0000414534	SSH-158	HANGER, SNAPSTAK, FOR 1-5/8
Kenwood		
0000414651	T9300MT12	1/2IN Std. Hanger w/HDW (PACK OF 10)
0000414656	T9303AN12	Stackable Snap-in Hangers, (1/2") (PACK OF 10)
0000414659	T9307TT38	1/2" Snap Stack Hanger Adapter for 3/8" Cable (PACK OF 10)
0000414654	T9300MT78	Butterfly Hanger w/HDW 7/8IN (PACK OF 10)
0000414658	T9303AN78	SnapStack Coax Hangers for 7/8" (PACK OF 10)
0000414650	T9300MT114	Butterfly Hanger for 1-1/4 in coax (PACK OF 10)
0000414655	T9303AN114	Stckbl Snpn Hngr Kt 1-1/4IN Hlx Cb (PACK OF 10)
0000414653	T9300MT158	Butterfly Hanger for 1-5/8in coax (PACK OF 10)
0000414657	T9303AN158	1-5/8in Stackable Snap-in (PACK OF 10)
0000414660	T9362MT158	Snap-in Hanger Kit (1-5/8") (PACK OF 10)
0000414652	T9300MT158N	Standard Hanger Kit for EW63 (1 5/8") (PACK OF 10)
0000414661	W2995AN63	EW63 SNAP IN CUSHION HANGER KIT
RFS		
0000297283	CLAMP-12	Cable hanger, non-insulated, bolt-on, for 1/2" coaxial cable
0000297367	SNAP-12	Snap-In Hangers, 1/2", stainless steel (kit of 10)
0000297372	SNAP-ST-12	Stackable Snap-In Hangers, 1/2", stainless steel (kit of 10)
0000297370	SNAP-78	Snap-In Hangers, 7/8", stainless steel (kit of 10)
0000297374	SNAP-ST-78	Stackable Snap-In Hangers, 7/8", stainless steel (kit of 10)
0000297368	SNAP-158	Snap-In Hangers, 1-5/8", stainless steel (kit of 10)
0000297373	SNAP-ST-158	Stackable Snap-In Hangers, 1-5/8", stainless steel (kit of 10)
Superior Essex		
0000414857	L-SH-S12	Stackable Snap-in Hanger Kit
0000414858	L-SH-S33	Stackable Snap-in Hanger Kit
0000414859	L-SH-S42	Stackable Snap-in Hanger Kit
0000414860	SSHAK3812	Stackable Snap-in Hanger Kit
0000414861	L-SH-S22	Stackable Snap-in Hanger Kit
0000414862	L-SH-U12	Universal Snap-in Hanger Kit
0000414863	L-SH-U22	Universal Snap-in Hanger Kit
0000414864	L-SH-U33	Universal Snap-in Hanger Kit
0000414865	L-SH-U42	Universal Snap-in Hanger Kit
Valmont		
0000415018	12SH-3	Snap-In Hangers (10 pk), Use with 1/2"
0000398204	12SS-A	Stackable Snap-In Hangers (10 pk), Use with 1/2"
0000415022	78SH-3	Snap-In Hangers (10 pk), Use with 7/8"
0000398216	78SS-A	Stackable Snap-In Hangers (10 pk), Use with 7/8"
0000415017	114SH-3	Snap-In Hangers (10 pk), Use with 1-1/4"
0000398203	114SS-A	Stackable Snap-In Hangers (10 pk), Use with 1-1/4"
0000415019	158SH-3	Snap-In Hangers (10 pk), Use with 1-5/8"
0000398205	158SS-A	Stackable Snap-In Hangers (10 pk), Use with 1-5/8"
0000415020	400SH-K	Snap-In Hanger (10 pk), Use with LMR-400, 3/8" Flex & RG11U
0000415021	400SS-A	Stackable Snap-In Hangers (10 pk), Use with LMR-400, 3/8" Flex & RG11U
0000414985	ADAP	Angle Adapters (10 pk), Stainless 3/8" with 1" Opening
0000414986	ADAP-O	Angle Adapters (10 pk), For use with Snap-Ins. 1" Opening
0000398217	ADAP-U	Angle Adapters (10 pk), Universal for Snap-Ins or Butterflies.
0000415024	BUG12	1/2" Butterfly Hanger (10 pk), Use with 1/2", 3/8", EW180, EW220
0000415025	BUG78	7/8" Butterfly Hanger (10 pk), Use with 7/8", EW85, EW90
0000415023	BUG114	1-1/4" Butterfly Hanger (10 pk), Use with 1-1/4" & EW77

Hoisting Grip

Product ID	Part #	Description
CommScope		
0000414537	43094	LDF4 HOISTING GRIP
0000414538	L4SGRIP	SUPPORT/HOISTING GRIP KIT
0000403289	19256B	LDF5 HOISTING SUPPORT GRIP KIT
0000388658	L5SGRIP	SUPPORT/HOISTING GRIP FOR LDF5. INCLUDES NON-LACE GRI AND 1 LDF5 CABLE CLAMP **REQUIRES SPECIAL TOOL***
0000414536	29961	LDF6 HOISTING GRIP
0000414539	L6SGRIP	SUPPORT/HOISTING GRIP FOR with a l6sgrip conta LDF6. INCLUDES NON-LACE GRI AND 1 LDF6 CABLE CLAMP **REQUIRES SPECIAL TOOL*** Note-if factory attached con
0000403296	24312A	HOISTING GRIP FOR 1-5/8" CABLE & EW44/52/63 WAVEGUIDES.
0000414540	L7SGRIP	SUPPORT/HOISTING GRIP FOR LDF7. INCLUDES NON-LACE GRI AND 1 LDF7 CABLE CLAMP **REQUIRES SPECIAL TOOL***
Kenwood		
0000414664	T9700MT12	Lace-Up Hoisting Grip for 1/2"
0000414665	T9700MT12L	Pre-Laced Hoisting Grip for 1/2"
0000414670	T9700MT58	Lace-Up Hoisting Grip for 5/8"
0000414671	T9700MT58L	Pre-Laced Hoisting Grip for 5/8"
0000414672	T9700MT78	Lace-Up Hoisting Grip for 7/8"
0000414673	T9700MT78L	Pre-Laced Hoisting Grip for 7/8"
0000414662	T9700MT114	Lace-Up Hoisting Grip for 1-1/4"
0000414663	T9700MT114L	Pre-Laced Hoisting Grip for 1-1/4"
0000414666	T9700MT158	Lace-up Hoisting Grip for 1-5/8"
0000414667	T9700MT158L	PreLaced Hsting Grip for 1-5/8IN Cx
0000414668	T9700MT214	Lace-Up Hoisting Grip for 2-1/4"
0000414669	T9700MT214L	Pre-Laced Hoisting Grip for 2-1/4"
RFS		
0000297336	HOIST1-12L	Hoisting Grip for Coaxial Cable and Elliptical Waveguide, Lace-Up
0000297344	HOIST1-78L	Hoisting Grip for Coaxial Cable and Elliptical Waveguide, Lace-Up
0000297338	HOIST1-158L	Hoisting Grip for Coaxial Cable and Elliptical Waveguide, Lace-Up
Superior Essex		
0000414866	L-HG-12	Hoisting Grip, Coax and Elliptical Waveguide
0000414867	L-HG-22	Hoisting Grip, Coax and Elliptical Waveguide
0000414868	L-HG-22L	Hoisting Grip, Coax and Elliptical Waveguide
0000414869	L-HG-33	Hoisting Grip, Coax and Elliptical Waveguide
0000414870	L-HG-33L	Hoisting Grip, Coax and Elliptical Waveguide
0000414871	L-HG-42	Hoisting Grip, Coax and Elliptical Waveguide
0000414872	L-HG-42L	Hoisting Grip, Coax and Elliptical Waveguide
Valmont		
0000415028	GRIP12	Hoisting Grips, Lace Up for 1/2" Coax, EW180, EW220
0000415029	GRIP12-C	Hoisting Grips, Closed for 1/2" Coax, EW180, EW220
0000415033	GRIP78	Hoisting Grips, Lace Up for 7/8" Coax & EW77
0000415034	GRIP78-C	Hoisting Grips, Closed for 7/8" Coax & EW77
0000415026	GRIP114	Hoisting Grips, Lace Up for 1-1/4" Coax & EW64
0000415027	GRIP114-C	Hoisting Grips, Closed for 1-1/4" Coax & EW64
0000415030	GRIP158	Hoisting Grips, Lace Up for 1-5/8" Coax, EW52, EW63
0000415031	GRIP158-C	Hoisting Grips, Closed for 1-5/8" Coax, EW52 & EW63
0000415032	GRIP40-C	Hoisting Grips, Closed for LMR-400, 3/8" Flex, RG11U



CommScope Hoisting Grip Kit - L4SGRIP



CommScope Hoisting Grip Kit - 24312A



RFS Hoisting Grip - HOIST1-12L



Superior Essex Hoisting Grip - L-HG-12



Valmont Hoisting Grip - GRIP12



CommScope Coaxial Cable - AL4RPV-50



CommScope Black, Flame Retardant Jacket - FSJ4RK-50B



RFS CELLFLEX® Low-Loss Foam Dielectric - LCF12-50J-P7



RFS CELLFLEX® Lite Low-Loss Cable - LCF158-50JL-A7



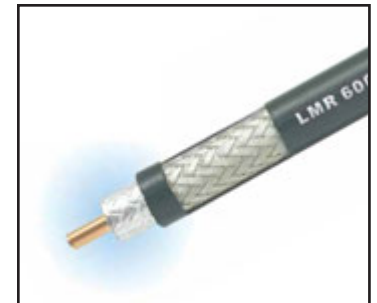
Times Microwave - Outdoor Coax Cable - LMR-195

Coax

KGP Logistics provides a broad selection of coaxial cable and support accessories from industry leading manufacturers including Commscope, RFS, Times Microwave Superior Essex and Trilogy.

COAXIAL CABLE		
Product ID	Part #	Description
CommScope		
0000414478	AL4RPV-50	1/2" AIR DI-ELECTRIC ALUMINUM CATVP HELI
0000414479	AL4RPV-50-2500	1/2" AIR DIELECTRIC ALUMINUM CATVP HELI
0000396916	AVA5-50FX	JACKET 50-OHM 7/8" ALUMINUM CABLE
0000414480	AVA5RK-50FX	FR.JKT.7/8" 50-OHM CABL W/FOAM-FILLED CC
0000388645	AVA6-50	STD. JACKET 50-OHM 1-1/4" AVA CABLE
0000414481	AVA7-50	STD. JACKET 50-OHM 1-5/8" AVA CABLE
0000414482	AVA7RK-50	BLACK FLAME RETARD. 1-5/8" 50-OHM CABLE
0000414483	FSJ4-50B	STD.JACKET 50-OHM 1/2" FSJ CABLE
0000414484	FSJ4RK-50B	BLACK FLAME RETARD.JACKET 1/2" CABLE
0000414487	FXL-540-NHR	1/2" CABLE BLACK LSZH JKT CATVR RATED
0000414488	FXL-780	JACKET 50-OHM 7/8" ALUMINUM
0000414485	FXL-1480	JACKET 50-OHM 1 1/4" ALUMIN
0000414486	FXL-1873	JCKT 50-OHM 1-5/8" ALUMINUM
0000414489	HL4RP-50A	1/2" AIR DI-ELECTRIC CATVP RATED HELIAX
0000414490	LDF4.5-50	STD. JACKET 50-OHM 5/8" LDF CABLE
0000414491	LDF4.5RK-50	FLAME RETARD.JKT. 50-OHM 5/8" LDF CABLE
0000388651	LDF4-50A	JACKETED 50-OHM 1/2" FOAM CABLE
0000414492	LDF4RK-50A	BLACK FLAME RETARD. JKT CATVR RATED
RFS		
0000414813	LCF12-50J-P7	1/2" CELLFLEX® Low-Loss Foam-Dielectric Coaxial Cable
0000414814	SCF12-50J-P7	1/2" CELLFLEX® Superflexible Foam-Dielectric Coaxial Cable
0000297352	LCF78-50JA-A7	7/8" CELLFLEX® Premium Attenuation Low-Loss Foam-Dielectric Coaxial Cable
0000297353	LCF78-50JL-P7	7/8" CELLFLEX® Lite Low-Loss Foam-Dielectric Coaxial Cable
0000297348	LCF158-50JA-A7	1-5/8" CELLFLEX® Premium Attenuation Low-Loss Foam-Dielectric Coaxial Cable
0000297349	LCF158-50JL-P7	1-5/8" CELLFLEX® Lite Low-Loss Foam-Dielectric Coaxial Cable
Times Microwave		
0000414889	LMR-195	Outdoor coaxial cable
0000414890	LMR-195-DB	Outdoor watertight coaxial cable
0000414891	LMR-195-FR	Indoor/outdoor riser CMR
0000414892	LMR-200	Outdoor coaxial cable
0000414893	LMR-200-DB	Outdoor watertight coaxial cable
0000414894	LMR-200-FR	Indoor/outdoor riser CMR
0000400981	LMR-240	Outdoor coaxial cable
0000400982	LMR-240-DB	Outdoor watertight coaxial cable
0000400984	LMR-240-UF	Indoor/outdoor communications coax
0000400985	LMR-400	Outdoor coaxial cable
0000400986	LMR-400-DB	Outdoor watertight coaxial cable
0000400987	LMR-400-FR	Indoor/outdoor riser CMR
0000400988	LMR-400-LLPL	Indoor/outdoor plenum
0000400989	LMR-400-UF	Indoor/outdoor communications coax
0000400990	LMR-600	Outdoor coaxial cable
0000400991	LMR-600-DB	Outdoor watertight coaxial cable
0000400992	LMR-600-FR	Indoor/outdoor riser CMR
0000400993	LMR-600-LLPL	Indoor/outdoor - plenum coax
0000400994	LMR-600-UF	Indoor/outdoor communications coax
0000414895	LMR-900-DB	Outdoor watertight coaxial cable
0000414896	LMR-900-FR	Indoor/outdoor riser CMR

COAXIAL CABLE - CONTINUED		
Product ID	Part #	Description
Trilogy		
0000414921	AT012FV50	1/2" Transmission Line, 50 Ohm, Low-Smoke, Non-Halogenated, Fire Retardant Jacket, IEC332-1, IEC332-3C, UL 1685-12 (FT4/IEEE1202, NFPA-130)
0000414922	AT012FX50	1/2" Transmission Line, 50 Ohm, Low-Smoke, Non-Halogenated, Fire Retardant Jacket, IEC332-1
0000414923	AT012J50	1/2" Transmission Line, 50 Ohm, Black Polyethylene Jacket
0000414924	AT012R50	1/2" Transmission Line, 50 Ohm, Low-Smoke, Non-Halogenated, Fire Retardant Jacket, IEC332-1, IEC332-3C, UL-1666, CMR
0000414925	AT078FV50	7/8" Transmission Line, 50 Ohm, Low-Smoke, Non-Halogenated, Fire Retardant Jacket, IEC332-1, IEC332-3C, UL 1685-12 (FT4/IEEE1202, NFPA-130)
0000414926	AT078FX50	7/8" Transmission Line, 50 Ohm, Low-Smoke, Non-Halogenated, Fire Retardant Jacket, IEC332-1
0000414927	AT078J50	7/8" Transmission Line, 50 Ohm, Black Polyethylene Jacket
0000414928	AT078R50	7/8" Transmission Line, 50 Ohm, Low-Smoke, Non-Halogenated, Fire Retardant Jacket, IEC332-1, IEC332-3C, UL-1666, CMR
0000414929	AT078U50	7/8" Transmission Line, 50 Ohm, Unjacketed
0000414930	AT114FV50	1-1/4" Transmission Line, 50 Ohm, Low-Smoke, Non-Halogenated, Fire Retardant Jacket, IEC332-1, IEC332-3C, UL 1685-12 (FT4/IEEE1202, NFPA-130)
0000414931	AT114FX50	1-1/4" Transmission Line, 50 Ohm, Low-Smoke, Non-Halogenated, Fire Retardant Jacket, IEC332-1
0000414932	AT114J50	1-1/4" Transmission Line, 50 Ohm, Black Polyethylene Jacket
0000414933	AT114R50	1-1/4" Transmission Line, 50 Ohm, Low-Smoke, Non-Halogenated, Fire Retardant Jacket, IEC332-1, IEC332-3C, UL-1666, CMR
0000414934	AT158FV50	1-5/8" Transmission Line, 50 Ohm, Low-Smoke, Non-Halogenated, Fire Retardant Jacket, IEC332-1, IEC332-3C, UL 1685-12 (FT4/IEEE1202, NFPA-130)
0000414935	AT158FX50	1-5/8" Transmission Line, 50 Ohm, Low-Smoke, Non-Halogenated, Fire Retardant Jacket, IEC332-1
0000414936	AT158J50	1-5/8" Transmission Line, 50 Ohm, Black Polyethylene Jacket
0000414937	AT158R50	1-5/8" Transmission Line, 50 Ohm, Low-Smoke, Non-Halogenated, Fire Retardant Jacket, IEC332-1, IEC332-3C, UL-1666, CMR
HFAC PLENUM		
Product ID	Part #	Description
Superior Essex		
0000414835	HFAC-12DP	Plenum rated coaxial cable, 1/2 in, 50 Ohm, copper clad aluminum center conductor, air dielectric, corrugated aluminum outer conductor and white jacket
HFAC RISER		
Product ID	Part #	Description
Superior Essex		
0000414836	HFAC-12DR	Riser rated coaxial cable, 1/2 in, 50 Ohm, copper clad aluminum inner conductor, foamed PE dielectric, corrugated aluminum outer conductor and black PE jacket
HFSC PLENUM		
Product ID	Part #	Description
Superior Essex		
0000414837	HFSC-12DP	Plenum rated coaxial cable, 1/2 in, 50 Ohm, copper clad aluminum center conductor, air dielectric, corrugated copper outer conductor and white jacket
HFSC RISER		
Product ID	Part #	Description
Superior Essex		
0000414838	HFSC-12DR	Riser rated coaxial cable, 1/2 in, 50 Ohm, copper clad aluminum inner conductor, foamed PE dielectric, corrugated copper outer conductor and black PE jacket



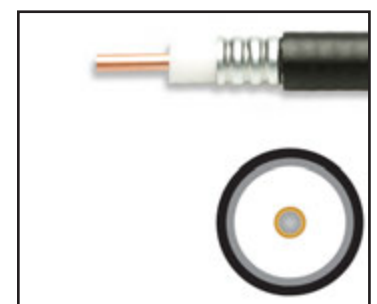
Times Microwave - Indoor/
Outdoor Coax Cable - LMR-600



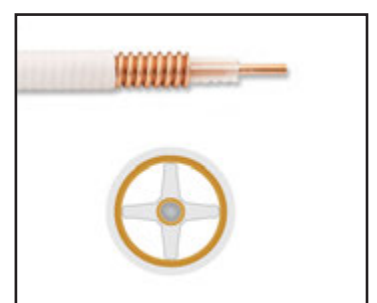
Trilogy Coax Cable AT012FV50



Superior Essex HFAC Plenum -
HFAC-12DP



Superior Essex HFAC Riser -
HFAC-12DR



Superior Essex HFSC Plenum -
HFSC-12DP



LHF PLENUM		
Product ID	Part #	Description
Superior Essex		
0000414839	LHF-12DP	Plenum rated coaxial cable, 1/2 in, 50 Ohm, copper clad aluminum center conductor, air dielectric, corrugated copper outer conductor and white jacket
LHF RISER		
Product ID	Part #	Description
Superior Essex		
0000414840	LHF-12DR	Riser rated coaxial cable, 1/2 in, 50 Ohm copper clad aluminum inner conductor, foamed PE dielectric, corrugated copper outer conductor and black PE jacket
LHF SERIES		
Product ID	Part #	Description
Superior Essex		
0000414841	LHF-12D	Low loss 1/2", 50 Ohm cables featuring a foamed polyethylene dielectric, annularly corrugated copper outer conductor and polyethylene jacket.
0000414842	LHF-22DU	Ultimate High Performance 7/8" cable, 50 Ohm, copper tube center conductor, foamed polyethylene dielectric and annularly corrugated copper outer conductor
0000414843	LHF-33D	Low loss 1 1/4", 50 Ohm cables featuring a foamed polyethylene dielectric, annularly corrugated copper outer conductor and polyethylene jacket.
0000414844	LHF-42DUF	Ultimate High Performance 1 5/8" cable, 50 Ohm, copper tube center conductor, foamed polyethylene dielectric and annularly corrugated copper outer conductor
PLENUM CABLES		
Product ID	Part #	Description
RFS		
0000401626	ICA12-50JPL	1/2" ClearFill®Line Plenum-Rated Air-Dielectric Coaxial Cable for In-Building Applications, blue
0000414815	ICA12-50JPLW	1/2" ClearFill®Line Plenum-Rated Air-Dielectric Coaxial Cable for In-Building Applications, white
0000401627	HCA78-50JPL	7/8" HELIFLEX® Air-Dielectric Coaxial Cable

Connectors

KGP Logistics carries a full line of connectors from the market leaders of the wireless industry.

COAXIAL CONNECTORS		
Product ID	Part #	Description
CommScope		
0000394762	78EZDF	78EZ DIN FEMALE CONNECTOR
0000394763	78EZDM	78EZ DIN MALE CONNECTOR
0000414500	158EZDF	EZ FIT DIN FEMALE CONNECTOR
0000414501	AL5DF-PSA	DIN FEMALE POSITIVE STOP CONNECTOR
0000414502	AL5DM-PSA	DIN MALE POSITIVE STOP CONN
0000388650	AL5NF-PSA	N FEMALE POSITIVE STOP CONN
0000388649	AL5NM-PSA	N MALE POSITIVE STOP CONN
0000414503	AL6DF-PSA	DIN FEMALE TRIMETAL CONN (POSITIVE STOP)
0000414504	AL7DF-PSA	DIN FEMALE POSITIVE STOP CONN
0000414505	AL7DM-PSA	DIN MALE POSITIVE STOP CONNECTOR
0000414506	AL7NF-PSA	N FEMALE POSITIVE STOP CONNECTOR
0000379397	F4DR-C	DIN MALE RIGHT ANGLE
0000387376	F4NR-HC	N RIGHT ANGLE MALE CONNECTOR
0000394768	F4PDF-C	CONNECTOR:FSJ4-50B 7/16 DIN ST FEMALE
0000414507	F4PDMV2-C	CONNECTOR:FSJ4 7/16 DIN STRAIGHT MALE
0000394770	F4PNF-C	CONNECTOR:FSJ4-50B N STRAIGHT FEMALE
0000414508	F4PNMV2-HC	CONNECTOR, PLATED N MALE, HEX HEAD, CAPTIVATED INNER, FOR FSJ4-50B SEE COMMENTS
0000414509	L4.5PNF-RC	N FEMALE CONNECTOR
0000414510	L4.5PNM-RC	LDF4.5 N MALE CONNECTOR
0000394772	L4DR-PS	7-16 MALE RIGHT ANGLE CONNEC
0000394773	L4NR-PS	N RIGHT ANGLE CONNECTOR POSITIVE STOP
0000394774	L4TDF-PSA	7/16 DIN STRAIGHT FEMALE CONNECTOR
0000404812	L4TDM-PSA	7/16 DIN STRAIGHT MALE CONNECTOR
0000388653	L4TNF-PSA	N STRAIGHT FEMALE CONNECTOR
0000388652	L4TNM-PSA	N STRAIGHT MALE CONNECTOR
0000414511	L5TDF-PS	DIN FEMALE CONN (POSITIVE STOP)
0000414512	L5TDM-PS	DIN MALE CONN (POSITIVE STOP TRIMETAL)
0000414513	L5TNF-PS	N FEMALE CONNECTOR (POSITIVE STOP)
0000414514	L5TNM-PS	Positive Stop, Connectors, 7/8", N Male, LDF5-50
0000414515	L6TDF-PS	Positive Stop, Connectors, 1-1/4", DIN Female, LDF6-50
0000414516	540EZDFV2	540EZFIT VERSION 2 DIN FEMALE CONNECTOR
0000394760	540EZDMV2	540EZFIT VERSION 2 DIN MALE
0000414517	540EZNVF2	540EZFIT VERSION 2 N FEMALE CONNECTOR
0000414518	540EZNMRV2	540EZFIT VERSION 2 N MALE R.A. CONN.
0000394761	540EZNMV2	540EZFIT VERSION 2 N MALE CO
0000414519	SFX-ADF	SFX DF "A" SERIES CONNECTOR
0000414520	SFX-ADM	SFX DM "A" SERIES CONN
0000414521	SFX-ADMR	SFX DMR "A" SERIES CONN
0000414522	SFX-ANF	SFX NF "A" SERIES CONNECTOR
0000414523	SFX-ANM	SFX NM "A" SERIES CONNECTOR
JMA		
0000402983	UXP-DF-158	CONNECTOR, 50 OHM, DIN FEMALE, 1-5/8
0000414583	UXP-DF-78	CONNECTOR,50 OHM, 1/2, DF, UNIV, ANNULAR
0000404996	UXP-DM-12	CONNECTOR,50 OHM,1/2,DM,UNIV,ANNULAR
0000386651	UXP-DM-12S	CONNECTOR,50 OHM,1/2,DM,UNIV,SUPERFLEX
0000402985	UXP-DRA-12	CONNECTOR,50 OHM,1/2,DRA,UNIV,ANNULAR
0000414584	UXP-DRA-12S	CONNECTOR,50 OHM,1/2,DRA,UNIV,SUPERFLEX
0000386652	UXP-NM-12	CONNECTOR,50 OHM,1/2,NM,UNIV,ANNULAR
0000414585	UXP-NM-12S	CONNECTOR,50 OHM,1/2,NM,UNIV,SUPERFLEX
0000414586	UXP-NRA-12	CONNECTOR,50 OHM,1/2,NRA,UNIV,ANNULAR
0000414587	UXP-NRA-12S	CONNECTOR,50 OHM,1/2,NRA,UNIV,SUPERFLEX



CommScope EZ FIT DIN Female Connector- 158EZDF



CommScope DIN Female Trimetal Connector - AL6DF-PSA



CommScope Positive Stop Connectors - L5TNF-PS



CommScope SFX DMR "A" Series - SFX-ADM



JMA Annular Connector - UXP-NRA-12



RF Industries Male Crimp Plug - RFB-1106-2



RF Industries - 4 Hole Flange - RFB-1115-14



RF Industries - FME Female Crimp - RFE-6050-C



RF Industries - N M Male Crimp - RFN-1006-3E



RF Industries - N Female Crimp Socket - RFN-1027

COAXIAL CONNECTORS - CONTINUED

Product ID	Part #	Description
RF Industries		
0000382415	RFB-1106-2	BNC,MALE CRIMP PLUG, CBL GRP C, N/G/D
0000414703	RFB-1106-2ST	BNC,MALE CRIMP PLUG, CBL GRP C, S/G/T
0000414704	RFB-1106-2T	BNC,MALE CRIMP PLUG, CBL GRP C, N/G/T
0000382416	RFB-1107-1X	BNC,MALE CRIMP PLUG, CBL GRP X, N/G/D
0000414705	RFB-1115-14	BNC F, 4 HOLE FLANGE, 1 INCH
0000414706	RFB-1117-BT	BNC F CRIMP BULKHEAD, CABLE GRP B, N/G/T
0000414707	RFB-1705	BNC,75 OHM, MALE TWIST-ON PLUG, CBL GROUP D, N/G/D
0000414708	RFB-1707-2	BNC, 75 OHM, MALE CRIMP PLUG, CBL GRP D, D1, N/G/D
0000403227	RFB-1707-D	BNC,75 OHM,MALE CRIMP PLUG FOR RG59/U, CBL GRPS D, D1, N/G/T
0000414709	RFB-1707-Q	BNC, 75 OHM, MALE CRIMP PLUG FOR RG6/U, CBL GRP Q, N/G/T
0000382719	RFD-1605-2-X	7-16 DIN M COMBO HEAD CRIMP FOR RG8-X, S/S/T
0000403294	RFE-6050-C	FME FEMALE CRIMP, CABLE GRP C, N/G/D
0000404213	RFN-1000-N	N M CLAMP SOLDER, CBL C, C1, N/G/T
0000382432	RFN-1002-1SI	N, MALE CLAMP SOLDER PLUG 9913, CBL GRP I, S/G/T
0000403238	RFN-1005-2N	N MALE CRIMP PLUG, CBL GRP C, N/G/T
0000404209	RFN-1005-3C	N, MALE CRIMP PLUG, CBL GRP C, S/G/T
0000404210	RFN-1005-3C1	N MALE CRIMP, CABLE GROUP C1, S/G/T
0000404215	RFN-1006-2L2	N MALE CRIMP, CABLE GROUP L2, S/G/T
0000382436	RFN-1006-3E	N M CRIMP, CABLE GROUP E. S/G/T
0000382437	RFN-1006-3I	N M CRIMP, CABLE GROUP I, S/G/T
0000414710	RFN-1006-3I2	N M CRIMP, CABLE GROUP I2, S/G/T
0000414711	RFN-1006-49I	N MALE CRIMP, NO CUT BRAID, SOLDERLESS CAPTIVE PIN, CBL GRP I
0000414712	RFN-1006-4I	N MALE CRIMP, NO CUT BRAID, CRIMP PIN, CBL GRP I
0000404211	RFN-1007-2SX	N, MALE CRIMP PLUG, CBL GRP X, S/G/T
0000382446	RFN-1009-C-03	N M CRIMP R/A, RG-58/U, CBL C, KNUCKLE STYLE, N/G/T
0000382447	RFN-1012-1	N, R/A ADAPTER-FEMALE/MALE, S/G/T
0000404212	RFN-1013-1	N, FEMALE TO FEMALE BARREL ADAPTER, S/G/T
0000414713	RFN-1022-8-C	N FEMALE CRIMP BULKHEAD, CBL GRP C, N/G/T
0000382450	RFN-1023	N F TO N F FRONT MOUNT BULK-HEAD, S/S/T
0000382451	RFN-1027	N, FEMALE CRIMP SOCKET, CBL GRP C, S/G/T
0000414714	RFN-1027-C2	N FEMALE CRIMP, CBL GRP C2, S/G/T
0000382453	RFN-1028-SI	N FEMALE CRIMP SOCKET, CBL GRP I, S/G/T
0000403248	RFN-1029-SX	N FEMALE CRIMP, CBL GRP X, S/G/T
0000382454	RFT-1202-2	TNC, MALE CRIMP PLUG, CBL GRP C, N/G/D
0000414715	RFT-1202-2B	TNC, MALE CRIMP, CBL GRP C, BC/G/D
0000382455	RFT-1202-2T	TNC, MALE CRIMP PLUG, CBL GRP C, N/G/T
0000403258	RFT-1202-I	TNC, MALE CRIMP, CBL GRP I, N/G/T
0000382456	RFT-1203-1X	TNC, MALE CRIMP, CBL GRP X, N/G/D
0000382457	RFT-1216-I	TNC F CRIMP, GRP C, N/G/T
0000382460	RFT-1227	TNC,FEMALE TO TNC MALE, R/A ADAPTER, N/G/T
0000414716	RFT-1234	TNC,MALE TO N FEMALE ADPTR, N/G/T
0000382463	RFT-1241-6	TNC,FEMALE TO SMA MALE ADPTR, N/G/T
0000382464	RFU-500	UHF, MALE SOLDER PLUG, CBL GRP C,D,E,F,P,X, N/S/S/DAP
0000382465	RFU-501	UHF M SOLDER PLUG, CABLE GROUP C,D,E,I,P,X, S/S/S/T
0000382466	RFU-505	UHF M CRIMP PLUG, CBL GRP C, N/S/DAP
0000382467	RFU-505-C1	UHF M CRIMP, CABLE GROUP C1, N/S/DAP
0000382468	RFU-505-ST	UHF M CRIMP PLUG, CBL GRP C, S/S/S/T
0000382469	RFU-507-SI	UHF,MALE CRIMP PLUG, CBL GRP I, S/S/T
0000382470	RFU-507-ST	UHF,MALE CRIMP PLUG, CBL GRP E, S/S/T
0000382471	RFU-508-X	UHF,MALE CRIMP PLUG, CBL GRP X, N/S/DAP

COAXIAL CONNECTORS - CONTINUED		
Product ID	Part #	Description
RF Industries - Continued		
0000403250	RFU-527	UHF FEMALE CRIMP, CBL GRP C, N/S/D
0000382472	RFU-530	UHF ADPTR/ REDUCER (USE W/ RFU-500 OR -501, CBL GRP C
0000382475	RFU-600-1	MUHF M CRIMP PLUG "AMP TYPE", CBL GRP C, N/G/D
0000414717	RFU-600-1X	MUHF M CRIMP, CABLE GROUP X, N/G/D
0000414718	RFU-600-2	MUHF M CRIMP, SHORT BODY, BLK CHROME, CBL GRP C, C/G/D
0000382476	RFU-600-6	MUHF M CRIMP MACHINED BODY, CBL GRP C, N/S/D
0000382477	RFU-601-1	MUHF F CRIMP MACHINED BODY, CBL GRP C, N/S/D
0000403239	RFU-621	M-UHF, MALE TO UHF FEMALE ADPT, N/G/T
0000414719	RMX-8010-1B	MCX R/A CRIMP PLUG, CBL GRP B, G/G/T
0000382480	RP-1202-C	TNC M REVERSE POLARITY CRIMP, CBL GRP C, N/G/T
0000382485	RQA-5010-X	QMA PLUG, R/A CRIMP,CBL GRP X, SNAP LOCK, WB/G/T
0000382486	RSA-3000-B	SMA MALE 3 PIECE CRIMP FOR CBL GRP B, N/G/T
0000382488	RSA-3000-C	SMA, MALE CRIMP, CBL GRP C, N/G/T
0000382489	RSA-3000-C1	SMA MALE CRIMP PLUG, CBL GRP C1, N/G/T
0000387614	RSA-3000-X	SMA M CRIMP FOR LMR-240, CBL GRP X, N/G/T
0000387615	RSA-3010-X	SMA MALE R/A CRIMP, CBL GRP X, N/G/T
RFS		
0000297225	716F-LCF158-D01K	7-16 DIN Male Connector for 1-5/8" Coaxial Cable, OMNI FIT™ Premium, Straight, O-Ring and compression sealing
0000297227	716F-LCF78-D01K	7-16 DIN Female Connector for 7/8" Coaxial Cable, OMNI FIT™ Premium, Straight, O-Ring and compression sealing
0000297230	716M-LCF12-D01	7-16 DIN Male Connector for 1/2" Coaxial Cable, OMNI FIT™ Premium, Straight, Polymer claw and compression sealing
0000297231	716M-LCF158-D01K	7-16 DIN Female Connector for 1-5/8" Coaxial Cable, OMNI FIT™ Premium, Straight, O-Ring and compression sealing
0000297233	716M-LCF78-D01K	7-16 DIN Male Connector for 7/8" Coaxial Cable, OMNI FIT™ Premium, Straight, O-Ring and compression sealing
0000297236	716MR-SCF12-D01	7-16 DIN Male Connector for 1/2" Coaxial Cable, OMNI FIT™ Premium, Right Angle, threaded gasket and 360° compression sealing
0000401628	NF-LCF12-B32	N Female Connector for 1/2" Coaxial Cable, OMNIFIT™ standard,O-ring sealing
0000297356	NF-LCF12-D01	N Female Connector for 1/2" Coaxial Cable, OMNI FIT™ Premium, Straight, Polymer claw and compression sealing
0000401629	NM-LCF12-B32	N Male Connector for 1/2" Coaxial Cable, OMNIFIT™ standard,O-ring sealing
0000295512	NM-LCF12-D01	N Male Connector for 1/2" Coaxial Cable, OMNI FIT™ Premium, Straight, Polymer claw and compression sealing
0000297363	NM-SCF12-D01	N Male Connector for 1/2" Coaxial Cable, OMNI FIT™ Premium, Straight, threaded gasket and 360° compression sealing
Times Microwave		
0000414899	EZ-200-NM	N male - straight plug
0000414900	EZ-200-NMH-D	N male - straight plug
0000414901	EZ-200-TFRP	TNC female - reverse polarity
0000414902	EZ-200-TM	TNC male - straight plug
0000400995	EZ-240-NMH-D	N male - straight plug
0000400996	EZ-240-SM	SMA male - straight plug
0000400997	EZ-240-SM-RA	SMA male - right angle
0000400998	EZ-240-TF	TNC female - straight jack
0000400999	EZ-240-TM	TNC male - straight plug
0000401000	EZ-400-716M-RA-X	7-16 DIN male - right angle
0000401001	EZ-400-716M-X	7-16 DIN male - straight plug
0000401002	EZ-400-BM	BNC male - straight plug



RF Industries UHF M Solder Plug - RFU-501



RF Industries SMA Male 3 Piece Crimp - RSA-3000-B



RFS OMNI FIT™ DIN Female, Straight Connector - 716M-LCF12-D01



RFS OMNI FIT™ DIN Male, Right Angle Connector - 716MR-SCF12-D01



RFS OMNI FIT™ N Male, Straight Connector - NM-LCF12-D01



Times Microwave TNC Female,
Reverse Polarity - TC-200-TM



Times Microwave N Male Right
Angle - EZ-400-UM



Times Microwave N Female
Straight Jack - EZ-900-NFC-2



Times Microwave TNC Male
Straight Plug - TC-195-TM



Times Microwave Coax Jack -
TC-400-NF

COAXIAL CONNECTORS - CONTINUED

Product ID	Part #	Description
Times Microwave - Continued		
0000401003	EZ-400-NF	N female - jack
0000401004	EZ-400-NF-BH	N female - jack
0000414903	EZ-400-NMC-2-D	N male - straight plug
0000401006	EZ-400-NMH-PL-D	N male - straight plug
0000401007	EZ-400-NMH-RA-X	N male - right angle
0000401008	EZ-400-NMH-X	N male - straight plug
0000401009	EZ-400-TM-X	TNC male - straight plug
0000401010	EZ-400-UM	UHF male - straight plug
0000401012	EZ-600-NF-BH	N female - bulkhead jack
0000414904	EZ-600-NF-X	N female - straight plug
0000401013	EZ-600-NMC-2-D	N male - straight plug
0000401014	EZ-600-NMH-PL-D	N male - straight plug
0000401015	EZ-600-NMH-RA-X	N male - right angle
0000414905	EZ-900-NFC-2	N female - straight jack
0000414906	EZ-900-NMC-2	N male - straight plug
0000401016	EZ-600-NMH-X	N male - straight plug
0000401017	EZ-600-TM-X	TNC male - straight plug
0000401018	EZ-600-UM	UHF male - straight plug
0000414907	EZ-900-716FC-2	7-16 DIN female - straight jack
0000414908	EZ-900-716MC-2	7-16 DIN male - straight plug
0000400983	LMR-240-FR	Indoor/outdoor riser CMR
0000414909	TC-195-NM	N male - straight plug
0000414910	TC-195-NMH-RA-D	N male - right angle
0000414911	TC-195-SM	SMA male - straight plug
0000414912	TC-195-TM	TNC male - straight plug
0000414913	TC-200-BM	BNC male - straight plug
0000414914	TC-200-NM	N male - straight plug
0000414915	TC-200-SM	SMA male - straight plug
0000401019	TC-240-NF-BH	N female - bulkhead jack
0000414916	TC-240-NMH-D	N male - straight plug
0000401021	TC-240-SM	SMA male - straight plug
0000401022	TC-240-SM-RA	SMA male - right angle
0000401023	TC-240-TM	TNC male - straight plug
0000401024	TC-400-BM	BNC male - straight plug
0000401026	TC-400-NF	N female - jack
0000401027	TC-400-NMH-X	N male - straight plug
0000401028	TC-400-SM	SMA male - straight plug
0000401029	TC-400-TM-X	TNC male - straight plug
0000401030	TC-600-NMH-X	N male - straight plug
0000414951	DFA01250	7/16 DIN Female for 1/2" Cable
0000414952	DFA07850	7/16 DIN Female for 7/8" Cable
0000414953	DFA11450	7/16 DIN Female for 1-1/4" Cable
0000414954	DFA15850	7/16 DIN Female for 1-5/8" Cable
0000414955	DFP01250	DIN Female, Plenum & Ultra-Flex for 1/2" Cable
0000414956	DFP01250-PIM	DIN Female, Plenum for 1/2" Cable, Optimized for PIM
0000414957	DMA01250	7/16 DIN Male for 1/2" Cable
0000414958	DMA07850	7/16 DIN Male for 7/8" Cable
0000414959	DMA11450	7/16 DIN Male for 1-1/4" Cable
0000414960	DMA15850	7/16 DIN Male for 1-5/8" Cable
0000414961	DMP01250	DIN Male, Plenum & Ultra-Flex for 1/2" Cable

COAXIAL CONNECTORS - CONTINUED		
Product ID	Part #	Description
Trilogy		
0000414962	DMP01250-PIM	DIN Male, Plenum for 1/2" Cable, Optimized for PIM
0000414963	DMPR01250	DIN Male Right Angle, Plenum & Ultra-Flex for 1/2" Cable
0000414964	NFA01250	N Female for 1/2" Cable
0000414965	NFA07850	N Female for 7/8" Cable
0000414966	NFA11450	N Female for 1-1/4" Cable
0000414967	NFA15850	N Female for 1-5/8" Cable
0000414968	NFP01250	N Female, Plenum & Ultra-Flex for 1/2" Cable
0000414969	NFP01250-PIM	N Female, Plenum for 1/2" Cable, Optimized for PIM
0000414970	NMA01250	N Male for 1/2" Cable
0000414971	NMA07850	N Male for 7/8" Cable
0000414972	NMA11450	N Male for 1-1/4" Cable
0000414973	NMA15850	N Male for 1-5/8" Cable
0000414974	NMP01250	N Male, Plenum & Ultra-Flex for 1/2" Cable
0000414975	NMP01250-PIM	N Male, Plenum for 1/2" Cable, Optimized for PIM
0000407473	NMPR01250	N Male Right Angle, Plenum & Ultra-Flex for 1/2" Cable
0000414976	SPP01250	Splice Plenum for 1/2" Cable & Ultra-Flex (see footnote)

Connector / Adapter

ADAPTERS, LOW PIM		
Product ID	Part #	Description
RF Industries		
0000382700	P2RFA-4013-SS	PIM Rated 7/16 DIN to 7/16 DIN and N Adapters, Tri-Metal
0000414720	P2RFD-1650-SS	PIM Rated 7/16 DIN-P to 7/16 DIN-P Adapter, Tri-Metal
0000414721	P2RFD-1652-SS	PIM Rated 7/16 DIN-P to 7/16 DIN-J Right Angle Adapter, Tri-Metal
0000414722	P2RFD-1653-4	PIM Rated 7/16 DIN-J to 7/16 DIN-J Adapter, Tri-Metal
0000382701	P2RFD-1660-SS	PIM Rated 7/16 DIN-P to 7/16 DIN-J Adapter, Tri-Metal
0000382703	P2RFD-1670-SS	PIM Rated 7/16 DIN-P to N-P Adapter, Tri-Metal
0000382705	P2RFD-1671-SS	PIM Rated 7/16 DIN-P to N-J Adapter, Tri-Metal
0000382707	P2RFD-1672-SS	PIM Rated 7/16 DIN-J to N-P Adapter, Tri-Metal
0000414723	P2RFD-1673-4	PIM Rated 7/16 DIN-J to N-J Adapter, Tri-Metal
0000382710	RFA-4013	PIM Rated 7/16 DIN to 7/16 DIN and N Adapters, Silver Plating
0000382722	RFD-1650-2	PIM Rated 7/16 DIN-P to 7/16 DIN-P Adapter, Silver Plating
0000382723	RFD-1652-2	PIM Rated 7/16 DIN-P to 7/16 DIN-J Right Angle Adapter, Silver Plating
0000382724	RFD-1653-2	PIM Rated 7/16 DIN-J to 7/16 DIN-J Adapter, Silver Plating
0000382725	RFD-1660-2	PIM Rated 7/16 DIN-P to 7/16 DIN-J Adapter, Silver Plating
0000382726	RFD-1670-2	PIM Rated 7/16 DIN-P to N-P Adapter, Silver Plating
0000382727	RFD-1671-2	PIM Rated 7/16 DIN-P to N-J Adapter, Silver Plating
0000382728	RFD-1672-2	PIM Rated 7/16 DIN-J to N-P Adapter, Silver Plating
0000382729	RFD-1673-2	PIM Rated 7/16 DIN-J to N-J Adapter, Silver Plating
0000382449	RFN-1014-1	N MALE TO MALE ADPTR, S,G,T
0000403225	RFN-1035-1	N, MALE TO UHF FEMALE ADPTR, S/G/T
0000382474	RFU-536	UHF DOUBLE FEMALE BARREL ADPTR, CBL GRP N/A, N,S,DAP
0000414724	RFU-626	M-UHF, FEMALE TO UHF MALE ADPT, N/G/T
0000414725	RSA-3452	SMA MALE TO N FEMALE, N,G,T
0000414726	RSA-3472	SMA FEMALE TO TNC MALE, ADPTR.
0000403293	RFA-4023-01	UNIDAPT KIT, 43 PIECE IN GREY PLASTIC CASE
0000382712	RFA-4024	30 PIECE UNIDAPT KIT
0000382713	RFA-4024-WB	30 PIECE UNIDAPT KIT, White Bronze (Tri-Metal)
0000382714	RFA-4024-WIFI	30 PIECE UNIDAPT KIT FOR WIFI APPLICATION;RP SMA & TNC; MMCX
0000414727	RFA-4059-A	UNIDAPT RF SAMPLER-SILVER SILVER TEFLON N MALE AND FEMALE CNTRS
0000414728	RFA-4059-A1	UNIDAPT RF SAMPLER SILVER,TEFLON LESS END CONNC.



Trilogy DIN Coax Connector (Female) - DFA07850



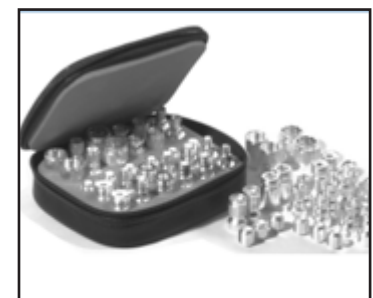
Trilogy DIN Coax Connector (Male) - DMA07850



RF Industries Low PIM Adapter - RFD-1670-2



RF Industries Low PIM Adapter - RFN-1014-1



RF Industries 30 Piece Unidapt Kit - RFA-4024



CommScope 1/2" Compact SureGround™ Kit - CSG12-06B1A



CommScope 7/8" Compact SureGround™ Kit - CSG78-06B1A



CommScope SureGround™ Grounding Kit - CSG158-12B2U



RFS Grounding Kit - Pre-Formed Copper Strap - GKFORM60-12



RFS Grounding Kit - Pre-Formed Copper Strap - GKFORM60-78

Grounding

KGP Logistics offers a comprehensive selection of grounding products to protect your valuable communication network from lightning strikes and power surges. Our offer includes a complete portfolio of grounding systems and accessories.

Product ID	Part #	Description
CommScope		
0000414525	CSG12-06B1A	1/2" COMPACT SUREGROUND KIT
0000404506	CSG12-12B2U	1/2" COMPACT SUREGROUND KIT, 1.2M WIRE
0000388660	SG12-06B2A	SUREGROUND KIT FOR 1/2 INCH
0000414531	SG12-12B2U	SUREGROUND KIT FOR 1/2 INCH
0000414528	CSG78-06B1A	7/8" COMPACT SUREGROUND KIT
0000414529	CSG78-12B2U	7/8" COMPACT SUREGROUND KIT
0000388659	SG78-06B2A	SUREGROUND KIT FOR 7/8 INCH
0000400656	SG78-12B2U	SUREGROUND KIT FOR 7/8 INCH
0000414524	CSG114-06B1A	Universal Compact SureGround™ Grounding Kit for 1-1/4 in corrugated and smoothwall coaxial cable
0000414530	SG114-06B2A	SUREGROUND KIT FOR 1-1/4 INC
0000388661	SG114-12B2U	SUREGROUND KIT FOR 1-1/4 INC
0000414526	CSG158-06B1A	1 5/8" COMPACT SUREGROUND KIT
0000414527	CSG158-12B2U	Universal Compact SureGround™ Grounding Kit for 1-5/8 in corrugated and smoothwall coaxial cable
0000414532	SG158-06B2A	1 5/8" SUREGROUND GROUNDING
0000414533	SG158-12B2U	SUREGROUND KIT FOR 1-5/8 INC
JMA		
0000406532	MIG-158-36	Grounding kit, minimally invasive, 6 gage, with hardware, 36" length
0000406533	MIG-158-60	Grounding kit, minimally invasive, 6 gage, with hardware, 60" length
Kenwood		
0000414639	T6100MT12C	60" LEAD W/ CRIMP ON UNIVERSAL 1/2" 2 HOLE LUG
0000414640	T6100MT12CE	1/2 Cx SnapOn Grd Kt,4FT Ld Unatt
0000414641	T6105AN15B4	Grounding Kit; LDF4
0000414642	T6120MT78C	60" Lead w/ Crimp On Universal 7/8" 2 Hole Lug
0000414643	T6120MT78S	Grounding Kits for 7/8"
0000414644	T6130MT114C	60" Lead w/ Crimp On Universal 1 1/4" 2 Hole Lug
0000414645	T6140MT158C	60" Lead w/ Crimp On Universal 1 5/8" 2 Hole Lug
0000414646	T6140MT158CE	1-5/8IN Cx Snap-On Grnd Kt 4FT Lead
0000414647	T6140MT158S	Grounding Kit for 1-5/8" Coax, EW52/63
0000414648	T6150MT214C	60" Lead w/ Crimp On Universal 2 1/4" 2 Hole Lug
RFS		
0000295511	GKFORM60-12	Grounding Kit, Pre-formed Copper Strap, 1.5m (60") for CELLFLEX® 1/2" Cable
0000297308	GKFORM60-78	Grounding Kit, Pre-formed Copper Strap, 1.5m (60") for CELLFLEX® 7/8" Cable
0000297303	GKFORM60-158	Grounding Kit, Pre-formed Copper Strap, 1.5m (60") for CELLFLEX® 1-5/8" Cable

Superior Essex		
0000414853	L-GK-C12	Clip-on ground kits
0000414854	L-GK-C22	Clip-on ground kits
0000414855	L-GK-C33	Clip-on ground kits
0000414856	L-GK-C42	Clip-on ground kits
Times Microwave		
0000414918	GK-S195TT	Standard ground kit for LMR-195 coaxial cable
0000414919	GK-S200TT	Standard ground kit for LMR-200 coaxial cable
0000401031	GK-S240TT	Standard ground kit for LMR-240 coaxial cable
0000401032	GK-S400TT	Standard ground kit for LMR-400 coaxial cable
0000401033	GK-S600TT	Standard ground kit for LMR-600 coaxial cable
0000414920	GK-S900TT	Standard ground kit for LMR-900 coaxial cable
Valmont		
0000415010	119690	Grounding Clamps, 3/16 - 7/8 Guy Wire Ground Clamps
0000415011	ATK306U	Arrestor Trapeze Kits, 3-Level Arrestor Trapeze Kit
0000415012	EKS-400TT	Grounding Kits, Tinned Ground Kit for LMR-400
0000415013	GK-C78	Grounding Kits, Clip-On Ground Kit, 7/8"
0000415014	GL-C114	Grounding Kits, Clip-On Ground Kit, 1-1/4"
0000415015	GL-C158	Grounding Kits, Clip-On Ground Kit, 1-5/8"
0000289952	MG21218	Ground Bars, 2" X 12" Double with 18 holes-Copper
0000415008	MG40616	Ground Bars, 4" X 6" 'Mega 6' with 16 holes - Copper
0000415009	MG41860	Ground Bars, 4" X 18" 'Mega 18" with 60 holes - Copper
0000415016	UGT5	Grounding Kits, Universal Ground Kit, 1/2" -3", EW220
0000397307	TRAP3	Trap Box (10 pk), 3-Run Standoff for Snap-Ins. 3/4" Holes



Superior Essex Clip-on Ground Kits - L-GK-C12



Times Microwave Ground Kit for LMR-240 Cable - GKS240TT



Valmont Grounding Kit - GK-C78



Kenwood Universal Angle Adapter - T9107MT

GROUNDING ACCESSORY, 3 WAY STAND OFF

Product ID	Part #	Decription
------------	--------	------------

Kenwood		
0000410933	T6402KT	Universal 3 Way Stand Off Adapter (PACK OF 10)

ANGLE ADAPTERS

Product ID	Part #	Decription
------------	--------	------------

Kenwood		
0000414596	T9104MT	Angle Adapter 3/4" Hole with Insert for 3/8" Cable (PACK OF 10)
0000414596	T9104MT	Angle Adapter, 3/8" Threaded (PACK OF 10)
0000414597	T9106MT	Angle Adapter, Universal (PACK OF 10)
0000414598	T9107MT	UNIVERSAL ADAPTOR (PACK OF 10)

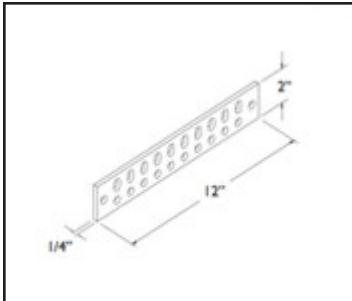
THEFT DETERRENT CABLE

Product ID	Part #	Decription
------------	--------	------------

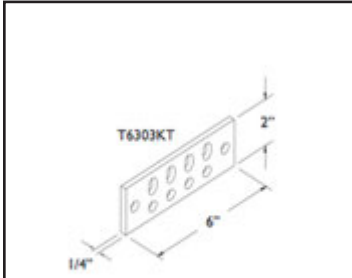
Erico		
0000399811	CC5A04	1-Tinned Copper, 6-Galvanized Steel, 0.330" Diameter (Bare)
0000409753	CC5A05	3-Tinned Copper, 16-Galvanized Steel, 0.334" Diameter (Bare)
0000399812	CC5A20	133-Tinned Copper, 21-Galvanized Steel, 0.526" Diameter (Bare)
0000414558	CC5A20INS	133-Tinned Copper, 21-Galvanized Steel, 0.526" Diameter (Bare)
0000414559	CC5A30	133-Tinned Copper, 24-Galvanized Steel, 0.572" Diameter (Bare)



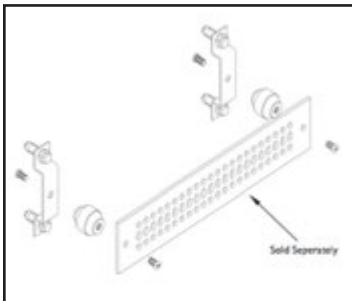
Erico Theft Deterrent Cable - CC5A05



Kenwood Buss Bar - T6300KT1



Kenwood Universal Ground Bar - T6303KTA



Kenwood Ground Bar Tower Mount Kit - T6502KT2A



Superior Essex Ground Buss Bar Kit - GB0424TU



Kenwood Cadweld Shots - T8800ER90

Buss Bar

Product ID	Part #	Decription
Kenwood		
0000414627	T6300KT1	Copper grounding bar, 1/4"x2"x10", 20 holes
0000414628	T6300KT15	1/4" x 2" Double 15" Ground Bar
0000414629	T6303KTA	BUSS BAR 2 X 6 4-HOLE - TINNED
0000414630	T6310KT-G	HDG Steel MAX24" Grnd Bar
0000414631	T6346KT12A	GRND BAR 4x12 TINND NOHRDW ATTSTMPD
0000414632	T6346KT24	BUSS BAR 4 X 24
0000414633	T6346KT24A	BUSS BAR 4 X 24 - TINNED
BUSS BAR KIT		
Kenwood		
0000414634	T6346KT12T	UNIVRSL GRND BAR 4x12in w/TOWR HRDW
0000414635	T6346KT24T	Univ Grnd Bar (4inx24in) wTower Hrd
0000414636	T6390AN2	TRAPEZE ARRESTOR BUSS KIT
0000414637	T6502KT2A	Grnd Bar Tower Mount kit
0000414638	T6502KT3A	BUSS BAR HARDWARE KIT TOWER/ANGLE INSULATED
Superior Essex		
0000414852	GB0424TU	Ground Buss Bar Kit

Exothermic

GROUNDING, MOLD SHOTS		
Product ID	Part #	Decription
Kenwood		
0000414649	T8800ER90	Cadweld shots for connection to grounding rod (10/BOX)

Jumper

KGP Logistics is your one stop shop for cell site, in-building (DAS) and fiber optic jumpers. We stock the most popular sizes and styles from the industry leaders throughout our network of distribution centers.

CABLE ASSEMBLIES		
Product ID	Part #	Description
CommScope		
0000414542	F4A-DMDM-3-P	CA:FSJ4 PREMIUM SUREFLEX ASSY 3FT
0000414543	F4A-DMDM-4-P	CA:FSJ4 PREMIUM SUREFLEX ASSY 4FT
0000414544	F4A-DMDM-6-P	CA:FSJ4 PREMIUM SUREFLEX ASSY 6 FT
0000414545	F4A-DMDM-8-P	CA:FSJ4 PREMIUM SUREFLEX ASSY 8 FT
0000414541	F4A-DMDM-10-P	CA:FSJ4 PREMIUM SUREFLEX ASSY 10FT
0000414547	F4A-DMDM-12-P	CA:FSJ4 PREMIUM SUREFLEX ASSY 12FT
0000414548	F4A-DMDM-15-P	CA:FSJ4 PREMIUM SUREFLEX ASSY 15FT
0000414546	F4A-DMDR-10-P	CA:FSJ4 PREMIUM SUREFLEX ASSY 10 FT
0000414549	F4A-DMDR-15-P	CA:FSJ4 PREMIUM SUREFLEX ASSY 15 FT
0000414550	F4A-DMDR-20-P	CA:FSJ4 PREMIUM SUREFLEX ASSY 20FT
0000414551	F4A-DMDR-25-P	CA:FSJ4 PREMIUM SUREFLEX ASSY 25FT
0000414552	F4A-DMDR-2M-P	CA:FSJ4 PREMIUM SUREFLEX ASSY 2M
0000397646	L4A-DMDM-3-P	CA:LDF4 PREMIUM SUREFLEX ASSY 3FT
0000397647	L4A-DMDM-4-P	CA:LDF4 PREMIUM SUREFLEX ASSY 4FT
0000397648	L4A-DMDM-6-P	CA:LDF4 PREMIUM SUREFLEX ASSY 6FT
0000387380	L4A-DMDM-8-P	CA:LDF4 PREMIUM SUREFLEX ASSY 8FT
0000397649	L4A-DMDM-10-P	CA:LDF4 PREMIUM SUREFLEX ASSY 10FT
0000397650	L4A-DMDM-12-P	CA:LDF4 PREMIUM SUREFLEX ASSY 12FT
0000397651	L4A-DMDM-15-P	CA:LDF4 PREMIUM SUREFLEX ASSY 15 FT
0000404808	L4A-DMDM-20-P	CA:LDF4 PREMIUM SUREFLEX ASSY 20FT
0000397655	L4A-DMDM-20-PX	CA:LDF4 PREMIUM SUREFLEX LOO ASSY 20FT
0000397653	L4A-DMDM-25-P	CA:LDF4 PREMIUM SUREFLEX ASSY 25FT
0000397656	L4A-DMDM-25-PX	CA:LDF4 PREMIUM SUREFLEX LOO ASSY 25FT
0000397654	L4A-DMDM-30-P	CA:LDF4 PREMIUM SUREFLEX ASSY 30FT
0000414553	L4A-DMDM-35-P	CA:LDF4 PREMIUM SUREFLEX ASSY 35 FT
0000414554	L4A-DMDM-35-PX	CA:LDF4 PREMIUM SUREFLEX LOOSE DM ASSY 35 FT
0000387381	L4A-DMDR-10-P	CA:LDF4 PREMIUM SUREFLEX ASSY 10 FT
0000414555	L4A-DMDR-15-P	CA:LDF4 PREMIUM SUREFLEX ASSY 15 FT
0000414556	L4A-DMDR-20-P	CA:LDF4 PREMIUM SUREFLEX ASSY 20 FT
0000414557	L4A-DMDR-25-P	CA:LDF4 PREMIUM SUREFLEX ASSY 25 FT
RF Industries		
0000414736	RFW-10519-36	CBL ASSY,N M TO N M, LMR-400LLPL, 36"
0000414737	RFW-12555-36	CBL ASSY, N MALE TO QMA MALE, LMR-240, 39"
0000414738	RFW-12559-24	CBL ASSY,N M TO N M, LMR-195, 24"
0000414739	RFW-12559-36	CBL ASY,N M TO N M, LMR-195, 36"
0000414740	RFW-12730-36	CBL ASSY, N M TO N M; BELDEN 83242, 36"
0000414741	RFW-12756-120	CBL ASSY, N M TO N M, RG142P, 120"
0000414742	RFW-12756-24	CBL ASSY; N M TO N M; RG-142P, 24"
0000414743	RFW-12756-36	CBL ASSY, N MALE TO N MALE, RG142P, 36"
0000414744	RFW-12756-48	CBL ASSY; N M TO N M; RG-142P, 48"
0000414745	RFW-12756-72	CBL ASSY, N M TO N M, RG142P, 72"



CommScope Premium Sureflex
8 ft. Assembly - L4A-DMDM-8-P



CommScope Premium Sureflex
3 ft. Assembly - L4A-DMDM-3-P



CommScope Premium Sureflex
35 ft. Assembly - L4A-DMDM-35-P



RF Industries Cable Assembly -
RFW-10519-36



RF Industries Cable Assembly -
RFW-12559-36



JUMPERS - CABLE ASSEMBLIES - CONTINUED		
Product ID	Part #	Description
RF Industries - Continued		
0000414746	RFW-12780-12	CBL ASSY,N F TO N M, RG142P, 12"
0000414747	RFW-12780-36	CBL ASSY,N F TO N M, RG142P, 36"
0000414748	RFW-12781-120	CBL ASSY, N MALE TO SMA MALE, RG58/U, 120"
0000414749	RFW-12781-36	CBL ASSY, N M TO SMA M, RG58/U, 36"
0000414750	RFW-12782-24	CBL ASSY, RP SMA M TO N M; RG58CU, 24"
0000414751	RFW-12783-12	CBL ASSY,MMCX M R/A TO N F BKD, LMR-100W, 12"
0000414752	RFW-5573-36	CBL ASSY, N M TO N M, RG142, 36"
0000414753	RFW-5586-120	CBL ASSY, N MALE TO N MALE, LMR-240, 120"
0000414754	RFW-5586-36	CBL ASSY, N M TO N M, LMR-240, 36"
RFS		
0000297243	7M7ML12-030FFP	CELLFLEX® 1/2" Premium Factory-Fit Jumper Assembly, DIN Male/DIN Male, 3ft
0000297245	7M7ML12-060FFP	CELLFLEX® 1/2" Premium Factory-Fit Jumper Assembly, DIN Male/DIN Male, 6ft
0000297247	7M7ML12-080FFP	CELLFLEX® 1/2" Premium Factory-Fit Jumper Assembly, DIN Male/DIN Male, 8ft
0000297249	7M7ML12-100FFP	CELLFLEX® 1/2" Premium Factory-Fit Jumper Assembly, DIN Male/DIN Male, 10ft
0000297259	7M7MS12-030FFP	CELLFLEX® 1/2" Superflexible Premium Factory-Fit Jumper Assembly, DIN Male/DIN Male, 3ft
0000297261	7M7MS12-060FFP	CELLFLEX® 1/2" Superflexible Premium Factory-Fit Jumper Assembly, DIN Male/DIN Male, 6ft
0000297263	7M7MS12-080FFP	CELLFLEX® 1/2" Superflexible Premium Factory-Fit Jumper Assembly, DIN Male/DIN Male, 8ft
0000297265	7M7MS12-100FFP	CELLFLEX® 1/2" Superflexible Premium Factory-Fit Jumper Assembly, DIN Male/DIN Male, 10ft
0000414816	NMNMI12P-060FFP	1/2" ClearFill®Line Plenum-Rated Air Dielectric, Factory-Fit Jumper Assembly, NM/NM, for In-Building Application, 6ft
0000414817	NMNMI12P-090FFP	1/2" ClearFill®Line Plenum-Rated Air Dielectric, Factory-Fit Jumper Assembly, NM/NM, for In-Building Application, 9ft
0000414818	NMNMI12P-100FFP	1/2" ClearFill®Line Plenum-Rated Air Dielectric, Factory-Fit Jumper Assembly, NM/NM, for In-Building Application, 10ft
0000414819	NMNMI12P-120FFP	1/2" ClearFill®Line Plenum-Rated Air Dielectric, Factory-Fit Jumper Assembly, NM/NM, for In-Building Application, 12ft
0000414820	NMNMI12P-150FFP	1/2" ClearFill®Line Plenum-Rated Air Dielectric, Factory-Fit Jumper Assembly, NM/NM, for In-Building Application, 15ft
0000414821	NMNMI12P-200FFP	1/2" ClearFill®Line Plenum-Rated Air Dielectric, Factory-Fit Jumper Assembly, NM/NM, for In-Building Application, 20ft
0000414822	NMNMI12P-400FFP	1/2" ClearFill®Line Plenum-Rated Air Dielectric, Factory-Fit Jumper Assembly, NM/NM, for In-Building Application, 40ft
Superior Essex		
0000414874	J12-1NMNM	Jumper, 1/2" Coax
0000414875	J12-2DMDM	Jumper, 1/2" Coax
0000414876	J12-2NMNM	Jumper, 1/2" Coax
0000414877	J12-3DMDM	Jumper, 1/2" Coax
0000414878	J12-3NMNM	Jumper, 1/2" Coax
0000414879	J123NMNMR	Jumper, 1/2" Coax
0000414880	J12-4DMDM	Jumper, 1/2" Coax
0000414881	J12-4NMNM	Jumper, 1/2" Coax
0000414882	J12-5DMDF	Jumper, 1/2" Coax
0000414883	J12-5DMDM	Jumper, 1/2" Coax
0000414884	J12-5NMNM	Jumper, 1/2" Coax
0000414885	J126NMNMR	Jumper, 1/2" Coax

JUMPERS - CABLE ASSEMBLIES - CONTINUED

Product ID	Part #	Description
Trilogy		
0000414980	JAU012DMDM4	Coax Jumper, AirCell, 1/2 Inch, 7/16 DIN Male to 7/16 DIN Male, 4 Ft
0000414981	JAU012DMDM6	Coax Jumper, AirCell, 1/2 Inch, 7/16 DIN Male to 7/16 DIN Male, 6 Ft
0000414982	JAU012DMDM8	Coax Jumper, AirCell, 1/2 Inch, 7/16 DIN Male to 7/16 DIN Male, 8 Ft
0000414977	JAU012DMDM10	Coax Jumper, AirCell, 1/2 Inch, 7/16 DIN Male to 7/16 DIN Male, 10 Ft
0000414978	JAU012DMDM15	Coax Jumper, AirCell, 1/2 Inch, 7/16 DIN Male to 7/16 DIN Male, 15 Ft
0000414979	JAU012DMDM20	Coax Jumper, AirCell, 1/2 Inch, 7/16 DIN Male to 7/16 DIN Male, 20 Ft
0000414983	JAU012NMNM10	Coax Jumper, AirCell, 1/2 Inch, N Male to N Male, 10 Ft



Trilogy Coax Jumper, AirCell - JAU012DMDM8

LOW PIM

Product ID	Part #	Description
Microlab		
0000414674	JA-10MA	Jumper DC-3 GHz, Sheathed .141, D-N(m-m), 1m, -164 dBc PIM TYP
0000407346	JA-10MD	Jumper DC-3 GHz, Sheathed .141, D-D(m-m), 1m, -164 dBc PIM TYP
0000407347	JA-10MN	Jumper DC-3 GHz, Sheathed .141, N-N(m-m), 1m, -164 dBc PIM TYP
0000414675	JA-10TN	Jumper DC-3 GHz, Sheathed .141, N-N(m-f), 1m, -164 dBc PIM TYP
0000414676	JA-20TN	Jumper DC-3 GHz, Sheathed .141, N-N(m-f), 2m, -164 dBc PIM TYP



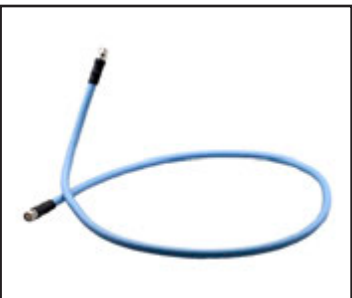
Microlab Low PIM Jumper - JA-10MA

RF Industries

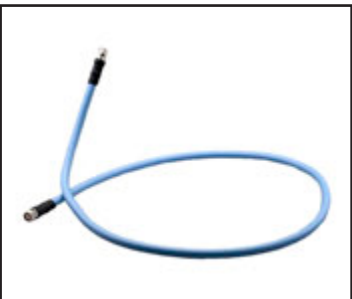
0000414755	P2RFC-2034-39	PLENUM & PIM Rated N-M to N-M TFT-402-LF 1 Meter Jumper, <-160 dBc Typ
0000414756	P2RFC-2035-39	PLENUM & PIM Rated N-M to N-M SPP-250 1 Meter Jumper, <-160 dBc Typ
0000414757	P2RFC-2036-39	PLENUM & PIM Rated N-M to DIN-M TFT-402-LF 1 Meter Jumper, <-160 dBc Typ
0000414758	P2RFC-2037-39	PLENUM & PIM Rated DIN-M to DIN-M TFT-402-LF 1 Meter Jumper, <-160 dBc Typ
0000414759	P2RFC-2038-39	PLENUM & PIM Rated SMA-M to SMA-M TFT-402-LF 1 Meter Jumper; <-160 dBc Typ
0000414760	P2RFC-2039-39	PLENUM & PIM Rated N-M to SMA-M TFT-402-LF 1 Meter Jumper, <-160 dBc Typ
0000414761	P2RFC-2043-39	PLENUM & PIM Rated N-M to N-F SPP-250 1 Meter Jumper, <-160 dBc Typ
0000414762	P2RFC-2044-39	PLENUM & PIM Rated N-M to DIN-M SPP-250 1 Meter Jumper, <-160 dBc Typ
0000414763	P2RFC-2045-39	PLENUM & PIM Rated N-F to N-F SPP-250 Jumper 1 Meter, <-160 dBc Typ
0000414764	P2RFC-2046-39	PLENUM & PIM Rated DIN-M to DIN-M R/A SPP-250 1 Meter Jumper, <-160 dBc Typ
0000414765	P2RFC-2047-39	PLENUM & PIM Rated RA DIN-M to RA DIN-M SPP-250 1 Meter Jumper, <-160 dBc Typ
0000414766	P2RFC-2048-39	PLENUM & PIM Rated RA N-M to N-M SPP-250 1 Meter Jumper, <-160 dBc Typ
0000414767	P2RFC-2049-39	PLENUM & PIM Rated RA N-M to RA N-M SPP-250 1 Meter Jumper, <-160 dBc Typ



Microlab Low PIM Jumper - JA-10TN



RFS Plenum & PIM Rated Jumper - P2RFC-2044-39



RFS Plenum & PIM Rated Jumper - P2RFC-2048-39

PREMIER®

Tool Tethering Solutions

Personal fall protection for those who work at height is a requirement in many workplaces. Companies are extending similar requirements for the tools that their employees use. PREMIER has partnered with Proto® to offer an innovative and comprehensive tool tethering system.

SkyHook™ Tether and Transfer System

- » Easy-to-use and adapt to current tool belts
- » Designed to keep tool engaged at all times
- » Short lanyard to allow for natural tool use and free range of motion
- » No dangling cords to interfere while walking, climbing, or working
- » Recommended to hold hand tool with SkyHook™ System under 6 lbs

Tether Attachments and Accessories

- » Heat Shrink Loops – versatile attachment for many different tool types
- » Tool Lanyards
- » Hard Hat Lanyard
- » D-Ring Web Tether with Sealing Tape
- » Tethered Tape Measure Sleeve

Ask your KGP Logistics Customer Service Representative for more details and place your order. 800-755-1950

Tool Tethering Solutions

Item No.	Mfg. Part No.	Description
0000412283	JPSDOCK	SkyDock Storage Attachment
0000412284	JPSWS	SkyDock Wrist Strap
0000412285	JPSS	SkyHook Switch Connector
0000412286	JPS1	SkyHook Kit for 1 Tool
0000412287	JPS2	SkyHook Kit for 2 Tools
0000412288	JPSSCAFF4	SkyHook Kit for 4 Tools
0000412289	JLANHATRD	Hard Hat Lanyard
0000412290	JPST1	SkyHook with SkyDock (no wrist strap)
0000412291	JPSBOLT	SkyHook Dual Dock Bolt Bag Kit
0000412292	JLAN15LBDSS	15lb Elastic Lanyard with (2) SS Carabiners
0000412293	JLAN25LBDSS	25lb Elastic Lanyard with (2) SS Carabiners
0000412294	JMOL36RFOR	Sealing Tape (1" x 36')
0000412295	JDRSMOR	D-Ring Web Tether
0000412296	JTAPESLV	Tethered Tape Measure Sleeve
0000412297	JP2R34X175LPOR	Heat Shrink Loop (3/4" x 1.75")
0000412298	JP2R1X175LPOR	Heat Shrink Loop (1.1" x 1.75")
0000412299	JP2R15X2LPOR	Heat Shrink Loop (1.5" x 2")
0000412300	JP2R2X2LPOR	Heat Shrink Loop (2" x 2")
0000412301	JP2R2X4LPOR	Heat Shrink Loop (2" x 4")
0000412302	JP2R275X2LPOR	Heat Shrink Loop (2.75" x 2")
0000412303	JP2R275X4LPOR	Heat Shrink Loop (2.75" x 4")

Communication products to depend on.™



Hard Hat Not Included

600 New Century Parkway
 New Century, Kansas 66031-8000
 1.800.755.1950

www.dependonpremier.com

Tool

KGP Logistics maintains an extensive inventory of cable prep and general purpose tools needed to complete any installation project. From custom cable preparation tools for coax and fiber to industry leading brands for general purpose and industrial strength applications, KGP Logistics provides both name brand and house brand solutions.

CABLE PREPARATION TOOLS		
Product ID	Part #	Description
CommScope		
0000407229	CPT-12U	CABLE PREPARATION TOOL
0000394671	CPT-78U	AUTOMATED CABLE PREPARATION TOOL 7/8"
0000407234	CPT-114U	1-1 /4" CABLE CORRUGATED PREP TOOL
0000394672	CPT-158U	UNIVERSAL AUTOMATED PREP TOOL,1-5/8" CBL
0000414493	CPT-BK	CABLE PREPARATION TOOL BLADE KIT
0000407230	CPT-BK12U	BLADE KIT CPT-12U
0000394675	CPT-BK5	BLADE KIT FOR CPTL5A TOOL
0000407235	CPT-BK6	BLADE KIT FOR CPTL6
000394676	CPT-BK7	BLADE KIT FOR CPTL7
0000394674	CPT-BKS1	BLADE KIT
0000394673	CPT-BKSF4	BLADE KIT
0000394669	CPT-F4B	CABLE PREPARATION TOOL FOR FSJ4
0000414494	CPT-HANDL	CABLE PREPARATION TOOL HANDLE
0000414495	CPT-L2	CABLE PREPARAT TOOL FOR LDF2 CONNECTORS
0000414496	CPT-L45RC	CABLE PREPARATION TOOL FOR LDF4.5
0000394670	CPT-L4ARC1	CABLE PREPARATION TOOL FOR LDF4
0000414497	MCPT-1412	EASIA X CABLE PREPARATION TOOL 1/4"&1/2"
0000414498	MCPT-3812	FSJ4/FSJ2 CABLE PREPARATION TOOL
0000414498	MCPT-3812	FSJ4/FSJ2 CABLE PREPARATION TOOL
0000407232	MCPT-78	PEASIA X TOOL FOR LDF5 7/8" CABLE
0000407241	MCPT-BK4	REPLACEMENT BLADE KIT FOR MCPT-L4 CABLE
0000407233	MCPT-BK5	REPLACEMENT BLADE KIT FOR MCPT-78 CABLE
0000414499	MCPT-L4	EASIA X TOOL FOR LDF4 1/2" CABLE
JMA		
0000414560	KIT-CC-FULL	Includes both insert(s) "A" for DIN and RA connectors & "B" for N connectors <u>Contents</u> <ul style="list-style-type: none"> • HCG-CC • HCG-FRAMESET-1/2 • HCG-FRAMESET-78 • HCG-FRAMESET-158 • TQ-114-F18 - Torque Wrench (Din-Male) • RDCUTTER-S • RDCUTTER • CORULDF4D - SP-1/2-LDF4D Prep/Strip Tool with Bit "U" • CORUUNIVD - SP-1/2-UNIVD Prep/Strip Tool with Bit "U" • SP-78 Prep/Strip Tool with Coring Bits/Pins • SP-158 Prep/Strip Tool with Coring Bits/Pins
0000414561	KIT-CC-1/2	Includes both insert(s) "A" for DIN and RA connectors & "B" for N connectors <u>Contents</u> <ul style="list-style-type: none"> • HCG-CC • TQ-114-F18 - Torque Wrench (Din-Male) • RDCUTTER-S • CORULDF4D - SP-1/2-LDF4D Prep/Strip Tool with Bit "U" • CORUUNIVD - SP-1/2-UNIVD Prep/Strip Tool with Bit "U"
JMA - Continued		



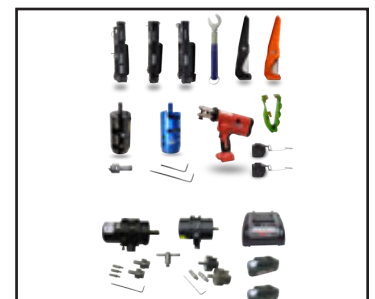
CommScope Universal Automatic Prep Tool - CPT-158U



CommScope Prep Tool for FSJ4 - CPT-F4B



CommScope Peasiac Tool for LDF5 7/8" Cable - MCPT-78



JMA Tool Kit - KIT-CC-FULL



JMA Tool Kit - KIT-CC-1/2



JMA Tool Kit - KIT400



JMA Tool Kit - KIT600



JMA 1-5/8" Air Dielectric - SP-158



RF Industries Stripping Tool - RFA-4087



RFS Automatic Trimming Tool - TRIM-ICA12-B32-A

CABLE PREPARATION TOOLS - CONTINUED

Product ID	Part #	Description
0000414562	KIT400	Tool Kit <u>Contents</u> <ul style="list-style-type: none"> • MCAP400 - Marking Guide, 50 Ohm, 400 Cable • SDT400-50 - Cartridge Trimmer, 50 Ohm, 400 Cable • RC400-50 - Replacement Cartridge, 50 Ohm, 400 Cable • 11831-01 - Installation Card, 50 Ohm Braided, (63/LB) • 11666-01 - Installation Instruction Card, 4" x 4" • Pouch-50 - Tool Pouch, 50 Ohm • IT50NM - Insertion Tool, 50 Ohm, N Male • PEN-50 - Marking Pen, Silver • TW1412 - Torque Wrench, 3/4in, 14In-Lbs • CXCCABLECUTTE - CXC Cable Cutter • VT500 - Compression Tool, 50 Ohm Braided
0000414563	KIT600	Tool Kit <u>Contents</u> <ul style="list-style-type: none"> • MCAP600 - Marking Guide, 50 Ohm, 600 Cable • SDT600-50 - Cartridge Trimmer, 50 Ohm, 600 Cable • RC600-50 - Replacement Cartridge, 50 Ohm, 600 Cable • 11831-01 - Installation Card, 50 Ohm Braided, (63/LB) • 11666-01 - Installation Instruction Card, 4" x 4" • Pouch-50 - Tool Pouch, 50 Ohm • IT50NM - Insertion Tool, 50 Ohm, N Male • PEN-50 - Marking Pen, Silver • TW1412 - Torque Wrench, 3/4in, 14In-Lbs • CXCCABLECUTTE - CXC Cable Cutter • VT600 - Compression Tool, 50 Ohm Braided
0000414564	SP-145	- 1/4" Annular - Foam Dielectric - 1/4" Superflex - Foam Dielectric
0000414565	SP-540	1/2" - Smoothwall
0000414566	SP-12PL	1/2" Annular - Air Dielectric
0000414567	SP-1/2-LDF4D	1/2" Annular - Foam Dielectric
0000414568	SP-1/2-LH4D	1/2" Annular LS - Foam Dielectric
0000414566	SP-12PL	1/2" Annular Trilogy - Air Dielectric
0000414569	SP-12SPL	1/2" Superflex - Air Dielectric
0000414570	SP-12S	1/2" Superflex - Foam Dielectric
0000414571	SP-500	1/2" Superflex - Smoothwall
0000414572	SP-78PL	7/8" - Air Dielectric
0000414573	SP-780	7/8" - Smoothwall
0000414574	SP-78FX	7/8" FX - Foam Dielectric
0000414575	SP-78	- 7/8" - Foam Dielectric - 7/8" Cuzy - Foam Dielectric
0000414576	SP-114	1-1/4" - Foam Dielectric
0000414577	SP-1480	1-1/4" - Smoothwall
0000414578	SP-158PL	1-5/8" - Air Dielectric
0000414579	SP-158	1-5/8" - Foam Dielectric
0000414580	SP-1873	1-5/8" - Smoothwall
0000414581	SDT-400	- 400 - Braided - 400 Plenum - Braided
0000414582	SDT-600	- 600 - Braided - 600 Plenum - Braided
RF Industries		
0000414701	RFA-4087	STRIPPING TOOL (ADJUSTABLE BLADE) RG-8, 213 & 214/U
0000414702	RFA-4400-01	STRIP TOOL WITH CART FOR RFN-1006-31 LMR-400 CABLE
RFS		
0000401630	TRIM-ICA12-B32-A	Automated trimming tool, ICA & LCF 12 OMNI FIT Standard, Trim Series B32
0000401631	TRIM-LCF12-D01-A	Automated trimming tool, LCF 12 OMNI FIT Premium, Trim Series D01

CABLE PREPARATION TOOLS - CONTINUED		
Product ID	Part #	Description
Superior Essex		
0000414845	T-BL-HFSC12	Connector termination is one of the most important factors affecting Radio Frequency (RF) transmission line operation. Cable cutting tools are offered in sizes ranging from ½ to 1 inches (12 to 42 mm). These precision tools are designed to cut the jacket and outer conductor quickly and easily. Cutting tools make accurate cuts in the cable at exact distance requirements for easy connector assembly. The automated cable preparation tools fit standard cordless 18V drills.
0000414846	T-BL-LHFA12	
0000414847	T-HFAC12DR	
0000414848	T-HFSC12DP	
0000414849	T-HFSC12DR	
0000414850	T-LHF12DR	
0000414851	T-LHFA12DP	
Times Microwave		
0000414897	CST-240A	Prep tool for LMR 240 connectors
0000401035	CST-400	Prep tool for LMR 400 crimp/clamp connectors
0000401036	CST-600	Prep tool for LMR 600 crimp/clamp connectors
0000401037	DBT-U	Deburring tool for LMR-195 through LMR-600 center conductors
0000414898	ST-900C	Prep tool for LMR-900 connectors
Trilogy		
0000414938	CB214	Replacement Blades for CT11450P & CT15850P (Outer Conductor & Jacket Strip)
0000414939	CB26	Replacement Blade for 1/2"-7/8" Prep Tools (CT AIO-2 Outer Conductor)
0000414939	CB26	Replacement Blade for Power Plenum Strip Tool (Outer Conductor)
0000414940	CB6667	Replacement Blade for Power Plenum Strip Tool (Jacket Strip)
0000414940	CB6667	Replacement Blades for 1/2"-7/8" Prep Tools (CT AIO-2 Jacket Strip)
0000414941	CT01250AIO-2	Prep Tool for 1/2" Cable, 50 Ohm
0000414942	CT07850AIO-2	Prep Tool for 7/8" Cable, 50 Ohm
0000414943	CT11450P	Power & Manual Prep Tool for 1-1/4" Transline and Radiating Cable
0000414944	CT15850P	Power & Manual Prep Tool for 1-5/8" Transline and Radiating Cable
0000414945	ICST	Inner Conductor Strip Tool
0000414946	ICST-RB	Inner Conductor Strip Tool Replacement Blade
0000414947	PCT012/PCT012-2	Power Plenum Strip Tool for Non-Radiating
0000414948	PCT012-PIM	Power/Manual Plenum Strip Tool for Non-Radiating, Optimized for PIM
0000414949	PST012	Manual Plenum Strip Tool
0000414950	PST012-RB	Replacement Blade for Manual Plenum Strip Tool



Superior Essex Cable Prep Tool - T-HFAC12DR



Times Microwave Prep Tool for LMR 400 - CST-400



RF Industries Crimp Tool - RFA-4006



RF Industries Crimp Tool - RFA-4009



Times Microwave Crimp Tool - HX-4 CRIMP HANDLE

CRIMP TOOL & DIES		
Product ID	Part #	Description
RF Industries		
0000382708	RFA-4005	CRIMP-TOOL & 2 DIES FOR ALL POPULAR CABLES
0000414729	RFA-4005-01	DIE SET FOR CRIMP TOOL RG58/U, RG59/U, 142/U, RG8X, PROFLEX
0000414730	RFA-4005-02	DIE SET FOR CRIMP TOOL RG8/U, 213/U, BELDEN 9913
0000414731	RFA-4005-09	DIE SET FOR CRIMP TOOL RG174/U, 188/U, 316/U, MINI 59
0000414732	RFA-4005-10	DIE SET FOR CRIMP TOOL RG8/U, 11/U, 213/U, N SERIES
0000414733	RFA-4005-20	CRIMP TOOL ONLY - W/O DIES
0000414734	RFA-4005-300	CRIMP TOOL WITH RFA-4005-02 INSTALLED IN CARDBOARD BOX
0000414735	RFA-4006	DELUXE CRIMPING KIT, 2 CRIMP TOOLS & 2 DIE SETS
0000382709	RFA-4009	HEAVY DUTY CRIMPER KIT FOR LOW LOSS 400 & 600 CABLES W/ DIES
0000382711	RFA-4022	UNIDAPT MEGA PLUS KIT, 74 PCS, W/ UNICABLES IN PLASTIC CASE
Times Microwave		
0000414917	HX-4 CRIMP HANDLE	Crimp tool
0000401039	Y1719 dies	.429" hex dies for TC/EZ-400
0000401040	Y1720 dies	.610" hex dies for TC/EZ-600
0000401041	Y375 DIES	.255" hex dies for TC/EZ-240

Weatherproofing

KGP Logistics stocks the most robust line up of traditional and next generation weatherproofing kits and closures from 3M, Commscope, JMA, PREMIER and TE Connectivity.

Product ID	Part #	Description
3M		
0000414477	SLC-716	Slim Lock Weatherproofing Closure for wireless weatherproofing applications is a compact closure that protects RF connections at the cell site. This closure is reusable, re-enterable and tool-less.
0000414475	WK-100	This wireless weatherproofing kit creates a reliable weatherproof seal for cable-to-cable and cable-to-device connections, for general use. Weatherproofing Kit
0000414476	WK-101	This wireless weatherproofing kit creates a reliable weatherproof seal for cable-to-cable and cable-to-device connections, for general use. Weatherproofing Kit
JMA		
0000414588	WPS-4A	1/2 ANNULAR BOOT, 50 OHM, WPS
0000414589	WPS-4S	1/2 SUPERFLEX BOOT, 50 OHM, WPS
0000414590	WPS-5	7/8, WEATHER PROTECTION SYSTEM, 50 OHM
0000414591	WPS-7	1-5/8 to 1/2in WEATHER PROTECTION SYSTEM
0000414592	WPS-DF	DIN FEMALE PORT SEAL, WPS
0000414593	WPS-N-4A	1/2 N ANNULAR BOOT, 50 OHM, WPS
0000414594	WPS-N-4S	1/2 N SUPERFLEX BOOT, 50 OHM, WPS
0000414595	WPS-NF	N FEMALE PORT SEAL, WPS
Superior Essex		
0000414886	L-WK-U	Universal Weatherproofing Kit
0000414887	WPS12158D	Weather Proofing Shell
0000414888	WPSANT12D	Weather Proofing Shell
TE Connectivity		
0000401664	D32473-000	Inline Closure, GSIC 1/2-1-1/4-00-Int01, 1-1/4 Inch Coax To 1/2 Inch Antenna
0000401665	E97072-000	Inline Closure, GSIC 1/2-1-5/8-00-Int01, 1-5/8 Inch Coax To 1/2 Inch Antenna
0000401666	F58329-000	Short Closure, GSIC 1/2-Ant-S-00-Int01, 1/2 Inch Antenna
0000284373	D80635-000	Short Closure, GSIC-1/2-ANT-L-00-INT01, 1/2 Inch Antenna
0000401661	CK9246-000	Ground Closure, Fast Ggnd 0078-Us01, 7/8 Inch Coax
0000401662	CS5011-000	Ground Closure, Fast Ggnd 0158-Us01, 1-5/8 Inch Coax
Trilogy		
0000414984	CSU-12158	Universal for All Cable Sizes
Valmont		
0000415035	M5000	Weatherproofing Kits, 2-1/2" X 2' Mastic
0000414475	WK-100	Weatherproofing Kits, Above Freezing Weatherproofing Kit
0000414476	WK-101	Weatherproofing Kits, Cold Weather Weatherproofing Kit
0000415038	WK1S	Weatherproofing Kits, Standard Weatherproofing Kit
0000415039	WK2M	Weatherproofing Kits, Mini-Weatherproofing Kit
0000398230	WK3S	Weatherproofing Kits, All-Weather Weatherproofing Kit



3M Slim Lock Closure - SLC-716



JMA Superflex Boot - WPS-4S



TE Connectivity Inline Closure - E97072-000



Trilogy Universal Kit - CSU-12158



Valmont Weatherproofing Kit - M5000

Part#	Page
10022-1	13
10022-2	13
10022-3	13
10108-1	13
10108-2	13
10108-3	13
10108D-1	13
10108D-2	13
10212-1	13
10212-2	13
114SH-3	15
114SS-A	15
119690	29
1271FW	10
12SH-3	15
12SS-A	15
158EZDF	22
158SH-3	15
158SS-A	15
1610-1	13
1610-2	13
1610-3	13
1610-4	13
19256B	16
24312A	16
24490507NM	12
26NCM	10
29961	16
400SH-K	15
400SS-A	15
43094	16
5012D-U	10
540EZDFV2	22
540EZDMV2	22
540EZNFBV2	22
540EZNMRV2	22
540EZNMV2	22
716F-LCF158- D01K	24
716F-LCF78-D01K	24
716M-LCF12-D01	24
716M-LCF158- D01K	24
716M-LCF78-D01K	24
716MR-SCF12-D01	24
78EZDF	22
78EZDM	22
78SH-3	15
78SS-A	15
7M7ML12-030FFP	33

Part#	Page
7M7ML12-060FFP	33
7M7ML12-080FFP	33
7M7ML12-100FFP	33
7M7MS12-030FFP	33
7M7MS12-060FFP	33
7M7MS12-080FFP	33
7M7MS12-100FFP	33
ADAP	15
ADAP-O	15
ADAP-U	15
AL4RPV-50	18
AL4RPV-50-2500	18
AL5DF-PSA	22
AL5DM-PSA	22
AL5NF-PSA	22
AL5NM-PSA	22
AL6DF-PSA	22
AL7DF-PSA	22
AL7DM-PSA	22
AL7NF-PSA	22
APXV9R13B-C	9
APXV9R20B-C	9
APXVFR- R12X-C-i20	9
APXVFR- R18X-C-i20	9
APXVFWW12X-C-NA20	9
ASP705K	12
ASP7A	12
ASPA685	12
ASPB685	12
AT012FV50	19
AT012FX50	19
AT012J50	19
AT012R50	19
AT078FV50	19
AT078FX50	19
AT078J50	19
AT078R50	19
AT078U50	19
AT114FV50	19
AT114FX50	19
AT114J50	19
AT114R50	19
AT158FV50	19
AT158FX50	19
AT158J50	19
AT158R50	19
ATK306U	29
AVA5-50FX	18

Part#	Page
AVA5RK-50FX	18
AVA6-50	18
AVA7-50	18
AVA7RK-50	18
BA12	13
BA122	13
BA123	13
BA124	13
BA143F	13
BA14F	13
BA158	13
BA78	13
BA782	13
BA783	13
BA784	13
BALX4	13
BALX42	13
BALX44	13
BAZERO	13
BG1583	13
BG1584	13
BG784	13
BGYD890K	12
BGZERO	13
BLR10S-A-B1	13
BLR12S-A-B1	13
BLR12S-H-B1	13
BLR8S-A-B1	13
BLR8S-O-B1	13
BMA38	9
BMA-NC	9
BMATM38	9
BMR10-A-B1	13
BMR10-B-B1	13
BMR10-D-B1	13
BMR10-H-B1	13
BMR10-O-B1	13
BMR10S-A-B1	13
BMR10S-O-B1	13
BMR12-A-B1	13
BMR12-B-B1	13
BMR12-D-B1	13
BMR12-H-B1	13
BMR12-O-B1	13
BMR12S-A-B1	13
BMR12S-B-B1	13
BMR12S-H-B1	13
BMR12S-O-B1	13

Part#	Page	Part#	Page	Part#	Page
BMR6-A-B1	13	CB26	38	DB201-L	12
BMR6-B-B1	13	CB6667	38	DB201-M	12
BMR6-D-B1	13	CB6667	38	DB201-N	12
BMR6-H-B1	13	CC5A04	29	DB201-P	12
BMR6-O-B1	13	CC5A05	29	DB222-A	12
BMR6S-B-B1	13	CC5A20	29	DB222-B	12
BMR8-A-B1	13	CC5A20INS	29	DB224-A	12
BMR8-D-B1	13	CC5A30	29	DB224-B	12
BMR8-H-B1	13	CK9246-000	40	DB224-C	12
BMR8-O-B1	13	CLAMP-12	15	DB224-E	12
BMR8S-A-B1	13	CPT-114U	36	DB228-A	12
BMR8S-B-B1	13	CPT-12U	36	DB264-A	12
BMYD890K	12	CPT-158U	36	DB404-B	12
BOA9028	12	CPT-78U	36	DB408-A	12
BOOT4-046	17	CPT-BK	36	DB408-B	12
BOOT4-060	17	CPT-BK12U	36	DB420-B	12
BOOT4-065	17	CPT-BK5	36	DB583E-SN	12
BOOT4-070	17	CPT-BK6	36	DB583-XC	12
BOOT4-078	17	CPT-BK7	36	DB583-XT	12
BOOT4-105	17	CPT-BKS1	36	DB583-Y	12
BOOT4-114-1	17	CPT-BKSF4	36	DB586-XC	12
BOOT4-12-1	17	CPT-F4B	36	DB586-XT	12
BOOT4-12-2	17	CPT-HANDL	36	DB586-Y	12
BOOT4-12-3	17	CPT-L2	36	DB589T3-Y	12
BOOT4-12-4	17	CPT-L45RC	36	DB589-Y	12
BOOT4-150	17	CPT-L4ARC1	36	DB616E-BC	12
BOOT4-158-1	17	CS5011-000	40	DB630-C	12
BOOT4-185	17	CSG114-06B1A	28	DB633-C	12
BOOT4-214-1	17	CSG12-06B1A	28	DB636-C	12
BOOT4-58-1	17	CSG12-12B2U	28	DB638NSE-C	12
BOOT4-58-3	17	CSG158-06B1A	28	DB806-A	12
BOOT4-78-1	17	CSG158-12B2U	28	DB809KE-SY	12
BOOT4-78-2	17	CSG78-06B1A	28	DB809KE-XC	12
BOOT4-78-3	17	CSG78-12B2U	28	DB809KE-XT	12
BOOT4-78-4	17	CST-240A	38	DB809KT3E-XC	12
BOOT-CP-12	18	CST-400	38	DB809KT3E-Y	12
BOOT-CP-78	18	CST-600	38	DB810E-PS	12
BPS10-A-B1	13	CSU-12158	40	DB810KE-A	12
BPS10-B-B1	13	CT01250AIO-2	38	DB810KE-SY	12
BPS10-D-B1	13	CT07850AIO-2	38	DB810KE-XC	12
BPS10-H-B1	13	CT11450P	38	DB810KE-XT	12
BPS10-O-B1	13	CT15850P	38	DB812KE-XT	12
BUG114	15	D32473-000	40	DB910CE-M	12
BUG12	15	D80635-000	40	DBT-U	38
BUG78	15	DA12-59AC	10	DFA01250	26
CAP4	14	DA8-59AC	10	DFA07850	26
CB214	38	DAX10-59AC	10	DFA11450	26
CB26	38	DAX8-59AC	10	DFA15850	26

Part#	Page
DFP01250	26
DFP01250-PIM	26
DMA01250	26
DMA07850	26
DMA11450	26
DMA15850	26
DMP01250	26
DMP01250-PIM	26
DMPR01250	26
E1118	14
E1447	14
E1448	14
E220	14
E575	14
E576	14
E97072-000	40
EKS-400TT	29
EZ-200-NM	24
EZ-200-NMH-D	24
EZ-200-TFRP	25
EZ-200-TM	25
EZ-240-NMH-D	25
EZ-240-SM	25
EZ-240-SM-RA	25
EZ-240-TF	25
EZ-240-TM	25
EZ-400-716M- RA-X	25
EZ-400-716M-X	25
EZ-400-BM	25
EZ-400-NF	25
EZ-400-NF-BH	25
EZ-400-NMC-2-D	25
EZ-400-NMH-PL-D	25
EZ-400-NMH-RA-X	25
EZ-400-NMH-X	25
EZ-400-TM-X	25
EZ-400-UM	25
EZ-600-NF-BH	25
EZ-600-NF-X	25
EZ-600-NMC-2-D	25
EZ-600-NMH-PL-D	25
EZ-600-NMH-RA-X	25
EZ-600-NMH-X	25
EZ-600-TM-X	25
EZ-600-UM	25
EZ-900-716FC-2	25
EZ-900-716MC-2	25
EZ-900-NFC-2	25

Part#	Page
EZ-900-NMC-2	25
F4A-DMDM-10-P	32
F4A-DMDM-12-P	32
F4A-DMDM-15-P	32
F4A-DMDM-3-P	32
F4A-DMDM-4-P	32
F4A-DMDM-6-P	32
F4A-DMDM-8-P	32
F4A-DMDR-10-P	32
F4A-DMDR-15-P	32
F4A-DMDR-20-P	32
F4A-DMDR-25-P	32
F4A-DMDR-2M-P	32
F4DR-C	22
F4NR-HC	22
F4PDF-C	22
F4PDMV2-C	22
F4PNF-C	22
F4PNMV2-HC	22
F58329-000	40
FSJ4-50B	18
FSJ4RK-50B	18
FTP4-1X1	18
FTP4-1X2	18
FTP4-1X4	18
FTP4-2X2	18
FTP4-2X3	18
FTP4-2X4	18
FTP4-3X4	18
FXL-1480	18
FXL-1873	18
FXL-540-NHR	18
FXL-780	18
G	9
GB0424TU	30
GK-C78	29
GKFORM60-12	28
GKFORM60-158	28
GKFORM60-78	28
GK-S195TT	29
GK-S200TT	29
GK-S240TT	29
GK-S400TT	29
GK-S600TT	29
GK-S900TT	29
GL-C114	29
GL-C158	29
G-NC	9

Part#	Page
GPL	9
GPSGSMMSMA	10
GPS-NMO	10
GPS-NMO-W	10
GPS-TMG-26N	10
GPS-TMG-HR-	
GPS-TMG-HR-26N	10
GRIP114	16
GRIP114-C	16
GRIP12	16
GRIP12-C	16
GRIP158	16
GRIP158-C	16
GRIP40-C	16
GRIP78	16
GRIP78-C	16
HBX-6516DS-VTM/A1M	9
HBX-6517DS-VTM	9
HBXX-6517DS-VTM	9
HCA78-50JPL	20
HFAC-12DP	19
HFAC-12DR	19
HFSC-12DP	20
HFSC-12DR	20
HL4RP-50A	18
HOIST1-12L	16
HOIST1-158L	16
HOIST1-78L	16
HX-4 CRIMP HAN- DLE	39
ICA12-50JPL	20
ICA12-50JPLW	20
ICST	38
ICST-RB	38
J12-1NMNM	33
J12-2DMDM	33
J12-2NMNM	33
J12-3DMDM	33
J12-3NMNM	33
J123NMNMR	33
J12-4DMDM	33
J12-4NMNM	33
J12-5DMDM	33
J12-5NMNM	33
J126NMNMR	33
JA-10MA	34
JA-10MD	34
JA-10MN	34

Part#	Page	Part#	Page	Part#	Page
JA-10TN	34	L6TDF-PS	22	LMR-240-FR	25
JA-20TN	34	L7SGRIP	16	LMR-240-UF	18
JAU012DMDM10	34	LBA-12-1A	14	LMR-400	18
JAU012DMDM15	34	LBA-12-2A	14	LMR-400-DB	18
JAU012DMDM20	34	LBA-12-3A	14	LMR-400-FR	19
JAU012DMDM4	34	LBA-12-4A	14	LMR-400-LLPL	19
JAU012DMDM6	34	LBA-12-5A	14	LMR-400-UF	19
JAU012DMDM8	34	LBA-22-1A	14	LMR-600	19
JAU012NMNM10	34	LBA-22-2A	14	LMR-600-DB	19
K332	9	LBA-22-3A	14	LMR-600-FR	19
K794	9	LBA-22-4A	14	LMR-600-LLPL	19
KIT400	37	LBA-33-1A	14	LMR-600-UF	19
KIT600	37	LBA-42-1A	14	LMR-900-DB	19
KIT-CC-1/2	36	LBA-57-1A	14	LMR-900-FR	19
KIT-CC-FULL	36	LCF12-50J-P7	18	LNX-6513DS-VTM	9
L4.5PNF-RC	22	LCF158-50JA-A7	18	LNX-6514DS-VTM	9
L4.5PNM-RC	22	LCF158-50JL-P7	18	LNX-6515DS-VTM	9
L4A-DMDM-10-P	32	LCF78-50JA-A7	18	L-SH-S12	15
L4A-DMDM-12-P	32	LCF78-50JL-P7	18	L-SH-S22	15
L4A-DMDM-15-P	32	LDF4.5-50	18	L-SH-S33	15
L4A-DMDM-20-P	32	LDF4.5RK-50	18	L-SH-S42	15
L4A-DMDM-20-PX	32	LDF4-50A	18	L-SH-U12	15
L4A-DMDM-25-P	32	LDF4RK-50A	18	L-SH-U22	15
L4A-DMDM-25-PX	32	L-GK-C12	29	L-SH-U33	15
L4A-DMDM-30-P	32	L-GK-C22	29	L-SH-U42	15
L4A-DMDM-35-P	32	L-GK-C33	29	L-WK-U	40
L4A-DMDM-35-PX	32	L-GK-C42	29	M5000	40
L4A-DMDM-3-P	32	LHF-12D	20	MBMC-NC	9
L4A-DMDM-4-P	32	LHF-12DP	20	MBM-NC	9
L4A-DMDM-6-P	32	LHF-12DR	20	MBS	9
L4A-DMDM-8-P	32	LHF-22DU	20	MCPT-1412	36
L4A-DMDR-10-P	32	LHF-33D	20	MCPT-3812	36
L4A-DMDR-15-P	32	LHF-42DUF	20	MCPT-3812	36
L4A-DMDR-20-P	32	L-HG-12	16	MCPT-78	36
L4A-DMDR-25-P	32	L-HG-22	16	MCPT-BK4	36
L4DR-PS	22	L-HG-22L	16	MCPT-BK5	36
L4NR-PS	22	L-HG-33	16	MCPT-L4	36
L4SGRIP	16	L-HG-33L	16	MG21218	29
L4TDF-PSA	22	L-HG-42	16	MG40616	29
L4TDM-PSA	22	L-HG-42L	16	MG41860	29
L4TNF-PSA	22	LMR-195	18	MHODB-	
L4TNM-PSA	22	LMR-195-DB	18	MIG-158-36	29
L5SGRIP	16	LMR-195-FR	18	MIG-158-60	29
L5TDF-PS	22	LMR-200	18	MTS-XY-A20	10
L5TDM-PS	22	LMR-200-DB	18	MYA93012	9
L5TNF-PS	22	LMR-200-FR	18	MYA9306	9
L5TNM-PS	22	LMR-240	18	NFA01250	26
L6SGRIP	16	LMR-240-DB	18	NFA07850	26

Part#	Page
NFA11450	26
NFA15850	26
NF-LCF12-B32	24
NF-LCF12-D01	24
NFP01250	26
NFP01250-PIM	26
NMA01250	26
NMA07850	26
NMA11450	26
NMA15850	26
NM-LCF12-B32	24
NM-LCF12-D01	24
NMNMI12P-060FFP	33
NMNMI12P-090FFP	33
NMNMI12P-100FFP	33
NMNMI12P-120FFP	33
NMNMI12P-150FFP	33
NMNMI12P-200FFP	33
NMNMI12P-400FFP	33
NMP01250	26
NMP01250-PIM	26
NMPR01250	26
NM-SCF12-D01	24
P2RFA-4013-SS	27
P2RFC-2034-39	34
P2RFC-2035-39	34
P2RFC-2036-39	34
P2RFC-2037-39	34
P2RFC-2038-39	34
P2RFC-2039-39	34
P2RFC-2043-39	34
P2RFC-2044-39	34
P2RFC-2045-39	34
P2RFC-2046-39	34
P2RFC-2047-39	34
P2RFC-2048-39	34
P2RFC-2049-39	34
P2RFD-1650-SS	27
P2RFD-1652-SS	27
P2RFD-1653-4	27
P2RFD-1660-SS	27
P2RFD-1670-SS	27
P2RFD-1671-SS	27
P2RFD-1672-SS	27
P2RFD-1673-4	27
PAD10-59AC	10
PAD10-65AC	10
PAD10-W59AC	10

Part#	Page
PAD6-59BC	10
PAD6-65BC	10
PAD6-W59BC	10
PAD8-59AC	10
PAD8-65AC	10
PAD8-W59AC	10
PADX6-U57AC	10
PADX8-U57AC	10
Part#	Page
Part#	Page
Part#	Page
Part#	Page
Part#	Page
Part#	Page
Part#	Page
Part#	Page
Part#	Page
Part#	Page
Part#	Page
PCT012/PCT012-2	38
PCT012-PIM	38
PST012	38
PST012-RB	38
RFA-4005	39
RFA-4005-01	39
RFA-4005-02	39
RFA-4005-09	39
RFA-4005-10	39
RFA-4005-20	39
RFA-4005-300	39
RFA-4006	39
RFA-4009	39
RFA-4013	27
RFA-4022	39
RFA-4023-01	27
RFA-4024	27
RFA-4024-WB	27
RFA-4024-WIFI	27
RFA-4059-A	27
RFA-4059-A1	27
RFA-4087	37
RFA-4400-01	37
RFB-1106-2	23
RFB-1106-2ST	23
RFB-1106-2T	23
RFB-1107-1X	23
RFB-1115-14	23

Part#	Page
RFB-1117-BT	23
RFB-1705	23
RFB-1707-2	23
RFB-1707-D	23
RFB-1707-Q	23
RFD-1605-2-X	23
RFD-1650-2	27
RFD-1652-2	27
RFD-1653-2	27
RFD-1660-2	27
RFD-1670-2	27
RFD-1671-2	27
RFD-1672-2	27
RFD-1673-2	27
RFE-6050-C	23
RFN-1000-N	23
RFN-1002-1SI	23
RFN-1005-2N	23
RFN-1005-3C	23
RFN-1005-3C1	23
RFN-1006-2L2	23
RFN-1006-3E	23
RFN-1006-3I	23
RFN-1006-3I2	23
RFN-1006-49I	23
RFN-1006-4I	23
RFN-1007-2SX	23
RFN-1009-C-03	23
RFN-1012-1	23
RFN-1013-1	23
RFN-1014-1	27
RFN-1022-8-C	23
RFN-1023	23
RFN-1027	23
RFN-1027-C2	23
RFN-1028-SI	23
RFN-1029-SX	23
RFN-1035-1	27
RFT-1202-2	23
RFT-1202-2B	23
RFT-1202-2T	23
RFT-1202-I	23
RFT-1203-1X	23
RFT-1216-I	23
RFT-1227	23
RFT-1234	24
RFT-1241-6	24
RFU-500	24

Part#	Page	Part#	Page	Part#	Page
RFU-501	24	SB2-105CC	10	SHPX3-26	10
RFU-505	24	SB3-105BC	10	SHPX3-6W	10
RFU-505-C1	24	SB4-W100AC	10	SLC-716	40
RFU-505-ST	24	SB4-W60AC	10	SNAP-12	15
RFU-507-SI	24	SB6-W60BC	10	SNAP-158	15
RFU-507-ST	24	SBNH-1D4545A	9	SNAP-78	15
RFU-508-X	24	SBNH-1D6565A	9	SNAP-ST-12	15
RFU-527	24	SBNH-1D6565B	9	SNAP-ST-158	15
RFU-530	24	SBNH-1D6565C	9	SNAP-ST-78	15
RFU-536	27	SBNH-1D8585B	9	SP-1/2-LDF4D	37
RFU-600-1	24	SBNH-1D8585C	9	SP-1/2-LH4D	37
RFU-600-1X	24	SBNHH-1D65A	9	SP-114	37
RFU-600-2	24	SBNHH-1D65B	9	SP-12PL	37
RFU-600-6	24	SBNHH-1D65C	9	SP-12PL	37
RFU-601-1	24	SBX4-W60AC	10	SP-12S	37
RFU-621	24	SBX6-W60BC	10	SP-12SPL	37
RFU-626	27	SC2-220AB	11	SP-145	37
RFW-10519-36	32	SC2-W100AC	11	SP-1480	37
RFW-12555-36	32	SC3-190AB	11	SP-158	37
RFW-12559-24	32	SC3-W100AC	11	SP-158PL	37
RFW-12559-36	32	SCF12-50J-P7	18	SP-1873	37
RFW-12730-36	32	SDT-400	37	SP-500	37
RFW-12756-120	32	SDT-600	37	SP-540	37
RFW-12756-24	32	SFX-ADF	22	SP-78	37
RFW-12756-36	32	SFX-ADM	22	SP-780	37
RFW-12756-48	32	SFX-ADM R	22	SP-78FX	37
RFW-12756-72	32	SFX-ANF	22	SP-78PL	37
RFW-12780-12	33	SFX-ANM	22	SPP01250	26
RFW-12780-36	33	SG114-06B2A	28	SSH-114	15
RFW-12781-120	33	SG114-12B2U	28	SSH-12	15
RFW-12781-36	33	SG12-06B2A	28	SSH-158	15
RFW-12782-24	33	SG12-12B2U	28	SSH-78	15
RFW-12783-12	33	SG158-06B2A	28	SSHAK3812	15
RFW-5573-36	33	SG158-12B2U	28	ST-900C	38
RFW-5586-120	33	SG78-06B2A	28	T3600KTA	14
RFW-5586-36	33	SG78-12B2U	28	T6100MT12C	28
RMX-8010-1B	24	SHP3-11W	10	T6100MT12CE	28
RP-1202-C	24	SHP3-13	10	T6105AN15B4	28
RQA-5010-X	24	SHP3-15	10	T6120MT78C	28
RSA-3000-B	24	SHP3-18	10	T6120MT78S	28
RSA-3000-C	24	SHP3-23	10	T6130MT114C	28
RSA-3000-C1	24	SHP3-26	10	T6140MT158C	28
RSA-3000-X	24	SHP3-6W	10	T6140MT158CE	28
RSA-3010-X	24	SHPX3-11W	10	T6140MT158S	28
RSA-3452	27	SHPX3-13	10	T6150MT214C	28
RSA-3472	27	SHPX3-15	10	T6300KT1	30
SB1-190BB	10	SHPX3-18	10	T6300KT15	30
SB1-220BB	10	SHPX3-23	10	T6303KTA	30

Part#	Page	Part#	Page	Part#	Page
T6310KT-G	30	T9307TT38	15	UA12-65AC	11
T6346KT12A	30	T9362MT158	15	UA8-65AC	11
T6346KT12T	30	T9600MT1X4	14	UGT5	29
T6346KT24	30	T9600MT1X6	14	UXA10-59BC	11
T6346KT24A	30	T9600MT2X2	14	UXA10-W59AC	11
T6346KT24T	30	T9600MT2X2	14	UXA12-W59AC	11
T6390AN2	30	T9600MT2X4	14	UXA6-59CC	11
T6402KT	29	T9700MT114	16	UXA6-U57AC	11
T6502KT2A	30	T9700MT114L	16	UXA6-W59BC	11
T6502KT3A	30	T9700MT12	16	UXA8-59BC	11
T8800ER90	30	T9700MT12L	16	UXA8-U57AC	11
T9104MT	29	T9700MT158	16	UXA8-W59AC	11
T9104MT	29	T9700MT158L	16	UXP-DF-158	23
T9106MT	29	T9700MT214	16	UXP-DF-78	23
T9107MT	29	T9700MT214L	16	UXP-DM-12	23
T9202MT4-1	13	T9700MT58	16	UXP-DM-12S	23
T9202MT4-3	13	T9700MT58L	16	UXP-DRA-12	23
T9206MT4-1	13	T9700MT78	16	UXP-DRA-12S	23
T9214MT	13	T9700MT78L	16	UXP-NM-12	23
T9216MT	13	T-BL-HFSC12	38	UXP-NM-12S	23
T9222MT4-3	13	T-BL-LHFA12	38	UXP-NRA-12	23
T9240MT	14	TC-195-NM	25	UXP-NRA-12S	23
T9242MT1	14	TC-195-NMH-RA-D	25	W2995AN63	15
T9242MT2	14	TC-195-SM	25	WF-070	18
T9242MT3	14	TC-195-TM	25	WK-100	40
T9242MT4	14	TC-200-BM	25	WK-100	40
T9246MT1	14	TC-200-NM	25	WK-101	40
T9249MT1	14	TC-200-SM	25	WK-101	40
T9251MT1	14	TC-240-NF-BH	25	WK1S	40
T9251MT3	14	TC-240-NMH-D	25	WK2M	40
T9251MT9	14	TC-240-SM	25	WK3S	40
T9259MT1	14	TC-240-SM-RA	25	WPS12158D	40
T9259MT1	14	TC-240-TM	25	WPS-4A	40
T9259MT2	14	TC-400-BM	25	WPS-4S	40
T9259MT2	14	TC-400-NF	25	WPS-5	40
T9259MT3	14	TC-400-NMH-X	25	WPS-7	40
T9259MT4	14	TC-400-SM	25	WPSANT12D	40
T9264MT	14	TC-400-TM-X	25	WPS-DF	40
T9283MF4	13	TC-600-NMH-X	25	WPS-N-4A	40
T9300MT114	15	T-HFAC12DR	38	WPS-N-4S	40
T9300MT12	15	T-HFSC12DP	38	WPS-NF	40
T9300MT158	15	T-HFSC12DR	38	Y1719 dies	39
T9300MT158N	15	T-LHF12DR	38	Y1720 dies	39
T9300MT78	15	T-LHFA12DP	38	Y375 DIES	39
T9303AN114	15	TRAP3	29		
T9303AN12	15	TRIM-ICA12-B32-A	37		
T9303AN158	15	TRIM-LCF12- D01-A	37		
T9303AN78	15	UA10-65AC	11		

KGP Logistics Wireless Line Card



ANTENNAS

Amphenol/Antel
CCI
Cellular Specialties Inc. (CSI)
Commscope/Andrew
CSS
Galtronics
HUBER + SUHNER
Kathrein Scala (KSD)
KMW
PCTEL
RFS



CABINETS & ENCLOSURES

3M
American Products
Charles Industries
Commscope
Corning Cable Systems
Emerson Network Products
Hoffman
Oldcastle
Purcell
Reiff
Special Product Company
Thermobond
Westell



COAX & CONNECTORS

Commscope/Andrew
HUBER + SUHNER
JMA

RF Industries
RFS
Superior Essex
TE Connectivity
Times Microwave
Trilogy
Westell



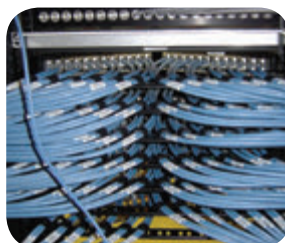
COAX SUPPORT ACCESSORIES

Commscope/Andrew
Kenwood
RFS
Roxtec
Sabre
Valmont/ Site Pro



DISTRIBUTED ANTENNA SYSTEMS - DAS

AFL
Commscope
Corning Mobile Access
JMA / TEKO
Microlab
RFS
TE Connectivity
Telect
Westell



FIBER, CONNECTORS, JUMPERS & PANELS

AFL
ARIA Technologies Inc.
Corning Cable Systems

HUBER + SUHNER
Megladon
MF Lightwave
NetSource
OFS
RAD Datacom
Superior Essex
TE Connectivity
Telect
Westell
Wirewerks



IN-BUILDING WLS / WI-FI

ActionTec
Commscope/Andrew
Comtrend
Corning Mobile Access
Juniper Networks (Trapeze)
Kathrein Scala (KSD)
Motorola
Omnitron
RFS
Ruckus Wireless
TE Connectivity
Xirrus
ZyXEL



POWER, GROUNDING & PROTECTION

Alpha Technologies, Ltd.
APC
Astron
Burndy
C&D Technologies
Cooper Bussmann
Delta Greentech (USA)
East Penn Deka
Eltek

KGP Logistics Wireless Line Card

Emerson Network Power
ENCELL
Energys
FIAMM
GE Energy (formerly Lineage)
GNB/Exide
Harger Lightning Protection
Hoppecke Battery
HUBER + SUHNER
MajorPower
NorthStar
PREMIER
RFS
TE Connectivity
Telect
Transtector
TRIMM
Tripp Lite
Westell



SPLITTERS/ COUPLERS/ ATTENUATORS

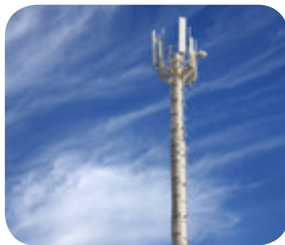
Commscope/Andrew
HUBER + SUHNER
MECA
Microlab
RFS



TOOLS, TEST EQUIPMENT, SAFETY & SUPPLIES

3M
AFL
Agilent
Anritsu
Capital Safety
DBI-SALA
Elk River
EXFO

Fluke Electronics
Fluke Networks
Greenlee
Hellerman
JDSU
JMA
Kaelus
Megger
PREMIER
VeEx (formerly Sunrise Telecom)
Westell



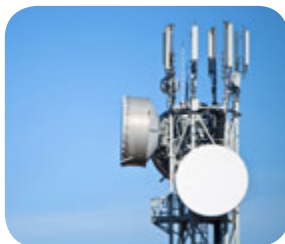
TOWERS

ROHN
Roxtec
Sabre
Stealth
Valmont/Site Pro



WIMAX

Airspan
Amphenol/Antel
Commscope/Andrew
Kathrein Scala (KSD)
RFS
Ubiquiti



WIRELESS BACKHAUL

Copper
Actelis
ADTRAN

Force10 Networks
General Datacom
Juniper Networks
Positron
RAD Datacom
Telco Systems
Telect

Ethernet – Layer 2

ADTRAN
Force10 Networks
Juniper Networks
RAD Datacom

Fiber

ADTRAN
Corning Cable Systems
Ericsson
Force10 Networks
General Datacom
Juniper Networks
Meglodon Manufacturing
Omnitron
Optelian
RAD Datacom
Telco Systems
TE Connectivity
Telect
Tellabs
Westell

Microwave

ADTRAN
Ceragon
CommScope
Ericsson
RAD Datacom
RFS

MPLS/IP/BGP/ISIS – Layer 3

ADTRAN
Ericsson
Force10 Networks
Juniper Networks

KGP Logistics is one of the country's largest single-source, value-added suppliers of supply chain services, communications equipment and integrated solutions to the telecommunications industry.

With a diverse and valued customer base, a national logistics network, and a portfolio of manufacturer partnerships that is second to none, KGP Logistics is well positioned to provide a unique array of products and services to solve critical deployment needs.

KGP Logistics has an industry leading combination of knowledge, experience, and a top-notch nationwide distribution network, which allows us to offer you the logistics and supply chain services that saves time and money.

KGP Logistics' collective capabilities, augmented with nearly 2,000 employees and \$100M in inventory, provide unmatched solutions throughout the United States.

- Comprehensive Product Portfolio
- Inventory Management
- Distribution Services
- Transportation Services
- Supply Chain Management
- Consulting Services
- Sourcing Services
- Product Integration



3305 Hwy 60 West
Faribault, MN 55021
800.755.1950
www.kgplogistics.com



KGP Logistics is certified to the TL 9000
Quality Management System (QMS) US07/3791

