

MOTOR CONTROLS

FRANKLIN VARIABLE FREQUENCY DRIVE Q-LINK WITH DISCONNECT



Q-Link with Disconnect

DESCRIPTION

The Franklin Q-Link variable frequency drives with disconnect are designed for HVAC motor control applications. The Q-Link disconnect drives are offered in a horsepower range from 1/2hp to 40hp. These drives are all equipped to work for 208VAC thru 480VAC and the full max rated amperage as well as the horse power capacity will vary depending on the voltage used. The disconnect-rated amperages range from 1.6 to 63 depending on model and horsepower desired. All Q-Link VFDs come with BACnet and Modbus communication capability along with a user-friendly Bluetooth phone app for set up and maintenance, IOS or Android compatible. All Q-Link drives come with a cooling fan, real-time clock, internal fuse protection, and digital, analog, and relay inputs as well as outputs. The Q-Link drive is also available in NEMA 12 or NEMA 4X. (Factory configured upon request-not standard. Call Kele for more information.

FEATURES

- *Simple and intuitive display*
- *Designated HOA buttons*
- *Native communications (BACnet & Modbus)*
- *R³ Filtering for harmonic mitigation*
- *Built in damper control with 24V output*
- *Compact UL Type 1 frame*
- *Finger-safe power terminals*
- *Meets latest harmonized UL standard*

SPECIFICATIONS

Input ratings		SCCR	100 KAIC fused protected short circuit current rating
Supply Voltage	3 phase, 200–480V (-10%, +15%)	Filter	R3 filtering to help meet IEEE519 & EN50160
	50~60 Hz (±5%)	EMC	EN 61800-3 (radiated & conducted emissions)
Motor Rating	.5 to 40 hp, 1-56 amps	Communications Protocol	BACnet MS/TP Modbus RTU, Bluetooth
Frequency Range	0~240 Hz	Operating Temperature	14 - 104°F (-10 to 40°C) subject to derate oules
Frequency Resolution	0.01 Hz	Storage Temperature	-4°F to 149°F (-20 to 65°C)
Acceleration Time	1-6000 sec (30 sec default)	Operating RH	0 - 95% (non-condensing)
Deceleration Time	1-6000 sec (30 sec default)	Dimensions	See ordering information
Digital Inputs	4 configurable (NO or NC)	Approvals	UL, cUL
Analog Inputs	3 selectable	Warranty	5 years
Digital Outputs	2 (125V, 125 amp max)		
Damper Outputs	24 VDC, .5 amp		
Programming Method	OLED display, Programming keypad, Bluetooth® mobile app, Communications		
PID Loop	Standard vin analog inputs		
Logging	100 faults/alarm/parameter changes with real time day/date		

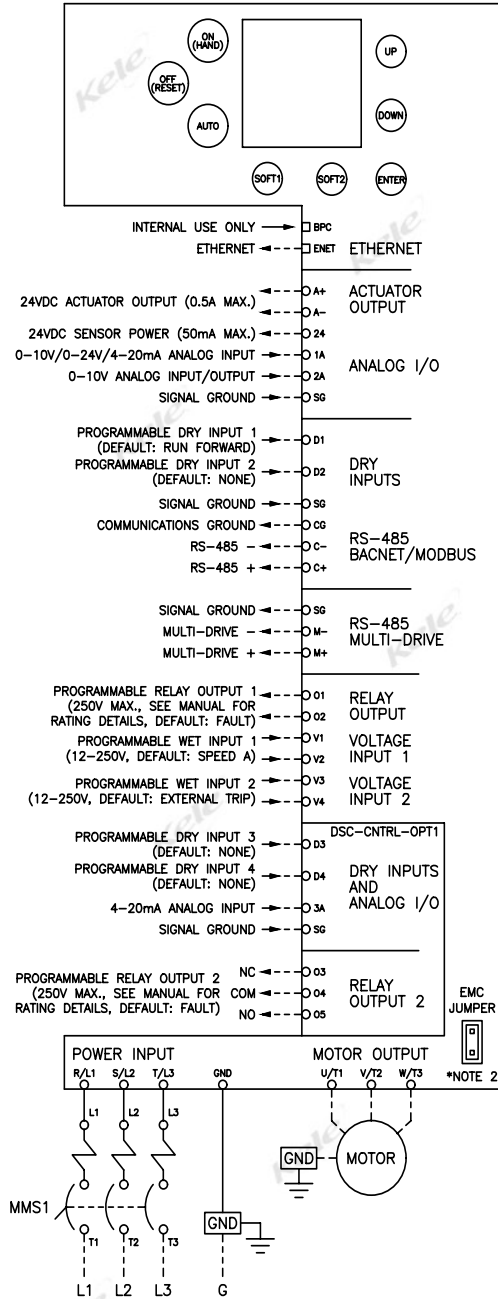


MOTOR CONTROLS

FRANKLIN VARIABLE FREQUENCY DRIVE Q-LINK WITH DISCONNECT

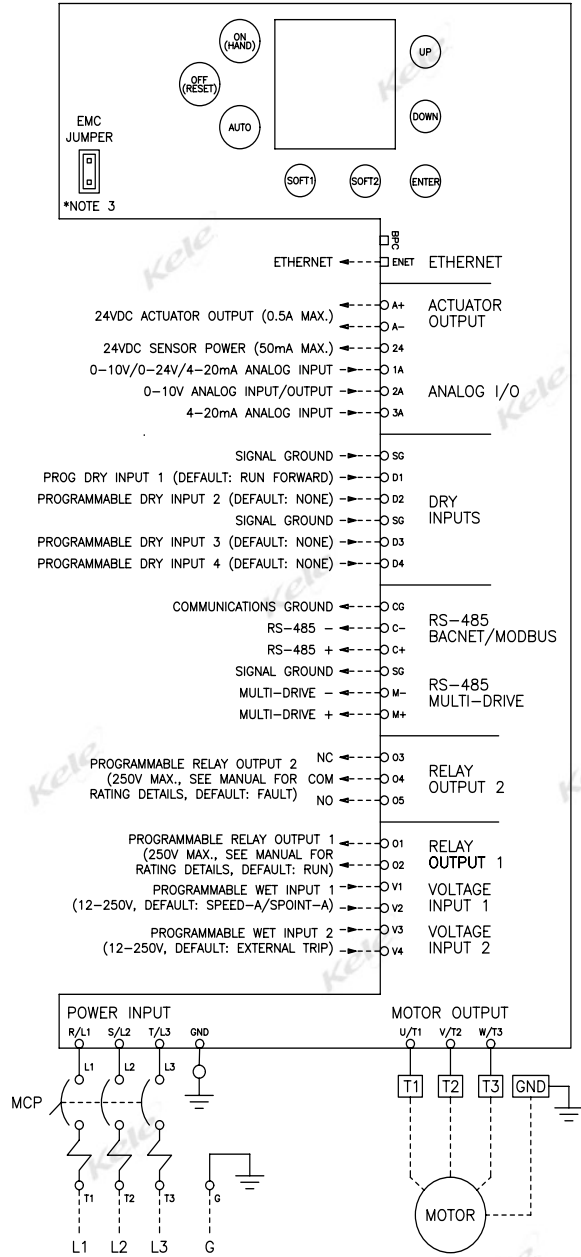
WIRING

1-28 AMP



- NOTES
1. DASHED LINES INDICATE FIELD WIRING.
 2. REMOVE EMC JUMPER FOR CORNER GROUNDED DELTA SYSTEMS.

38-56 AMP



*NOTE 3

MOTOR CONTROLS

FRANKLIN VARIABLE FREQUENCY DRIVE Q-LINK WITH DISCONNECT



ORDERING INFORMATION

ORDERING INFORMATION							
Part Number	Full Load Amps (FLA)	HP @ 208V	HP @ 230V	HP @ 480V	NEMA Rating	Dimensions (HxWxD)	
QLNK1-DISC003-DV-1.6	1.6	0.33	0.33	0.5	NEMA 1	31.75" x 5.5" x 6.75"	
QLNK1-DISC003-DV-2.5	2.5	0.5	0.5	1			
QLNK1-DISC005-DV-4	4	0.75	0.75	1.5			
QLNK1-DISC009-DV-6	6	1	1.5	2			
QLNK1-DISC009-DV-8	8	2	2	3			
QLNK1-DISC012-DV-8	8	2	2	3			
QLNK1-DISC012-DV-10	10	2	3	5			
QLNK1-DISC017-DV-13	13	3	3	7.5			
QLNK1-DISC017-DV-17	17	3	5	10			
QLNK1-DISC024-DV-22	22	5	7.5	15			
QLNK1-DISC028-DV-26	26	7.5	7.5	15			
QLNK1-DISC028-DV-32	32	7.5	10	20			
QLNK1-DISC038-DV-40	38	10	10	25			
QLNK1-DISC045-DV-40	40	10	10	30			
QLNK1-DISC056-DV-50	50	15	15	30			
QLNK1-DISC056-DV-63	56	15	20	40	49.5" x 6.5" x 7.3"		
QLNK3-DISC003-DV-2.5	2.5	0.5	0.5	1		NEMA 3R	36.5" x 26" x 16.5"
QLNK3-DISC005-DV-4	4	0.75	0.75	1.5			
QLNK3-DISC009-DV-6	6	1	1.5	2			
QLNK3-DISC017-DV-13	13	3	3	7.5			
QLNK3-DISC017-DV-17	17	3	5	10			
QLNK3-DISC028-DV-32	28	7.5	10	20			