

**PHILIPS**

Signage Solutions

H1 2015



A signage experience  
**beyond the ordinary**



# Welcome to Philips **Signage Solutions**



# The right message, at the right time

Whatever business you are in, it always pays to look professional. That is why, when you are choosing signage solutions, you want to choose the best. Making use of leading technologies we have developed impactful signage solutions that bring innovation to your business.

Our latest generation Signage Solutions offer best in class picture performance, while focusing on convenience for integrators and total cost of ownership for end users. With this broad range of professional displays we are dedicated to meet the highest quality standards and operational excellence. And you can see that commitment clearly in everything we do. Enjoy taking a closer look at what Philips Signage Solutions has to offer.



# Next generation of digital signage

Each application is unique. We developed our SmartCollection to offer you customizable solutions to meet your specific requirements. Both integrators and solution providers are offered the latest innovations, while the audience can enjoy impactful solutions. When developing smart innovations we focus on three key ingredients:

## Caring

Care about your business, and your audience. Our focus on the success of your business and your audience's satisfaction resulted in true long-term partnerships based on reliability, trust and excellence.

## Innovative

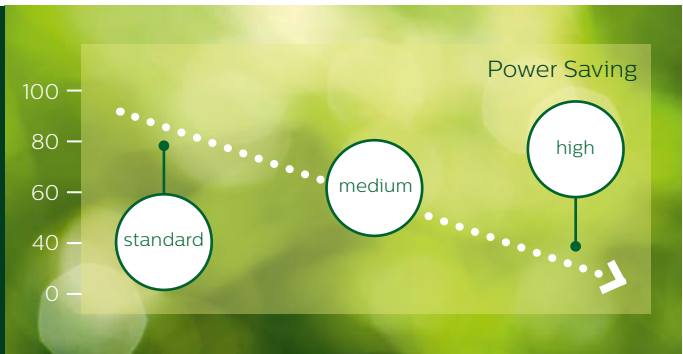
Innovative solutions ensure the right message at the right time. We provide built-in capability to support customized applications and services through a wide array of system integrators and service providers.

## Impactful

Maximizing the impact of your message. We understand you and your audience expect impressive viewing experience, greater customization and flexibility, that is why we help you to build impactful signage solutions.

# SmartCollection





## Reduce your total cost of ownership up to 50%

All our professional displays offer SmartPower functionality which enables you to save costs and reduce your carbon footprint. The backlight intensity can be controlled and pre-set

by the system to reduce the power consumption by up to 50%. Considering the lifetime of your network, SmartPower will save substantially on your energy costs.



## Keep your content up and running with FailOver

Keeping your content up and running is critical for demanding commercial applications. FailOver provides 24/7 protection with a revolutionary technology that plays back-up content on screen in the event of a media player failure.

FailOver automatically kicks in when the primary input fails. Simply select a primary input connection and a FailOver connection (USB, VGA, HDMI, DVI or DisplayPort) and you are ready for instant protection.



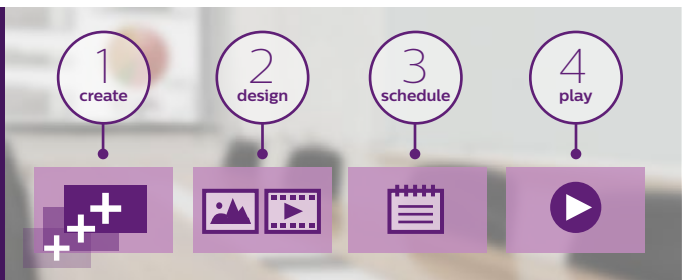
## Show clinical images consistently with high quality

D-image helps you to review and diagnose clinical images with consistent and accurate display performance. To achieve reliable clinical interpretations our professional displays are

factory calibrated to give optimized greyscale standard display performance. D-image helps you to excel in every aspect of patient care.

 **SmartCMS**

**SmartCMS** >



## Your free and perfect simple content management solution

Free and easy-to-use content management software that works exclusively with Philips Signage Solutions displays to manage your digital signage content. With SmartCMS you can

create and schedule your own content over 24 hours every day. Simply create your network, design your content, schedule your playlist and you are ready to play!

 **HTML5**

**HTML5** >



## Connect and control your content via the cloud

Connect and control your content via the cloud with the integrated HTML5 browser. Design your signage content online and connect with a single display or with your complete

network. Simply plug in a RJ45 internet cable for network connection, connect the display with the dedicated url-address and you are ready to play your cloud based content.

 **SmartPlayer**

**SmartPlayer** >



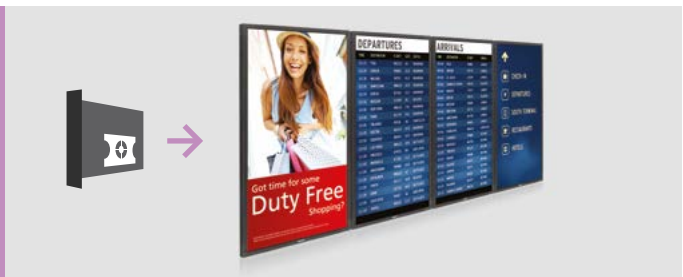
## Playback what you want, when you want

Turn your USB into a true cost effective digital signage device. Simply save your content (video, audio, pictures) on your USB and plug into your display.

Create your playlist and schedule your content via the on screen menu, and enjoy your own created playlists anytime, anywhere.

 **OPSInsert**

**OPS Insert** >



## All-in-one digital signage solution

Turn your display into an all-in-one digital signage solution and create a display network which is connected, intelligent and secure. Open Pluggable Specification (OPS) is an industry

standard slot into which you can add an OPS-standardized media player. This cable free solution gives you the ability to install, use or maintain your hardware whenever you need.



# Smart Control >



## Connect & Control your network from a single location

Connect and control with your entire display network from a central admin computer. SmartControl is display-based software to manage your network of displays from a single

location via RJ45 and RS232. Easily identify your displays and fine-tune all display settings including resolution, brightness, contrast and SmartPower.



# Ultra HD >



## Ultimate Signage performance in Ultra HD

Experience your Signage Solutions like never before thanks to four times the resolution of a conventional Full HD display.

3840 x 2160 pixels provide an image so refined, so lifelike, it's a window to a new world.



# Multi-Touch >



## Experience amazing interactivity

A brand new level of interactivity is now available thanks to integrated touch technology. More flexibility and optimum simultaneous touch performance coupled with excellent operability opportunities to give you the ultimate in user

interaction. The Multi-Touch displays are enabled with automatic touch recognition. The USB connector is HID compliant, providing true plug-and-play operation.




**UltraNarrow**  
 Bezel

# UltraNarrow Bezel

>



## Immersive visual experience

The next generation of video wall displays is designed with industry narrowest bezels and advanced alignment solutions. Fully exploit your impactful signage content with ultra narrow

bezel displays, and make sure your message does not get lost by thick bezels. With the ultra narrow bezels you can create seamless video wall configurations of virtually any size.


**Advanced Colour Calibration**

# Colour Calibration

>



## Ensure perfect and uniform colours

The Advanced Colour Calibration kit controls the luminance of the backlight, standardizes the gamma curve and calibrates the greyscale of your display network. Whether you have an impressive video wall, a catchy mosaic layout, a menu board

installation or a control room each single display can be adjusted to the same colour values. With this optional kit you ensure consistent colour performance over all displays in your network.


**HDBT**

# HDBaseT

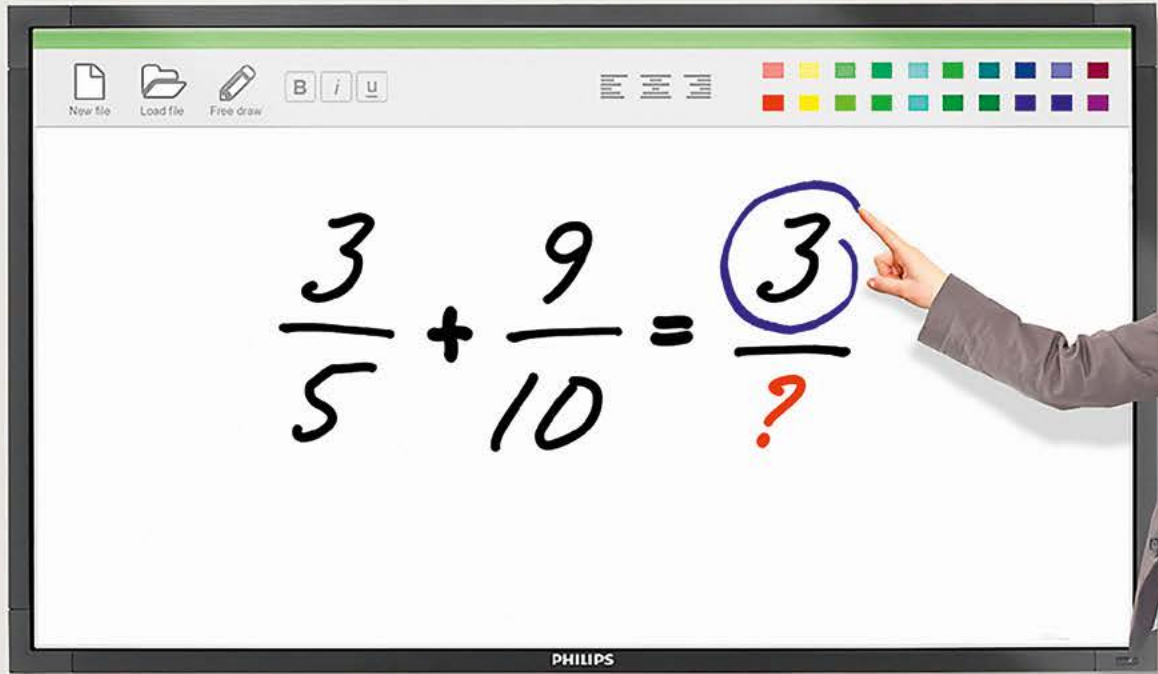
>

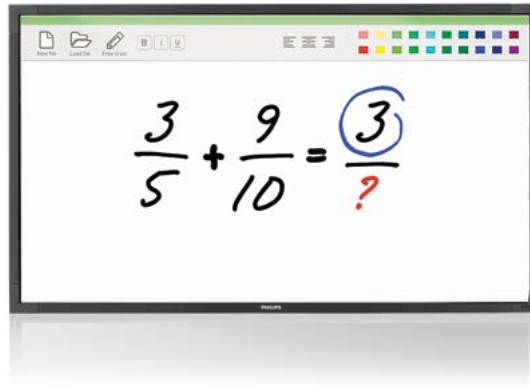


## Future proof connectivity with HDBaseT OPS receiver

The OPS receiver module enables the reception of HDBaseT signals. HDBaseT is a connectivity standard over a single CAT5e / 6 cable, converging uncompressed full HD digital video, audio and control signals.

Making use of leading technology standards, the HDBaseT OPS receiver integrated within the OPSinsert provides you with a powerful combination and a unique all-in-one solution.





# A signage experience beyond the ordinary

Professional solutions for the widest range of applications

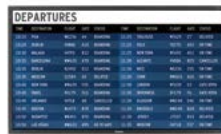
From advanced airport installations to interactive classroom solutions, Philips offers professional display solutions that help you in making the right impression. Our broad range of professional displays is designed with the latest, sustainable and innovative technologies which fit perfectly in any application.



Basic Signage  
Slim Full HD  
Q-line



Professional Signage  
Slim Full HD  
E-line



High Brightness  
Slim Full HD  
V-line



Ultra HD Signage  
4K Resolution  
U-Line



Videowall Solution  
Ultra-Narrow Bezel  
X-line



Interactive Signage  
Full HD  
T-line



Hotel TV  
Signature, MediaSuite  
EasySuite, Studio



Healthcare TV  
EasySuite White



# Q-line

Intensify your signage experience with priceless smart performance

Deliver startlingly clear images in a more eco-friendly way with the Q-line displays. High on performance and reliability, yet low on power consumption, it is ideal for projects where no compromise is accepted.



- 65"
- 55"
- 46"
- 42"
- 32"

**Optimised for public viewing**

- Full HD LED technology for brilliant images

**Maximizing the impact of your message**

- Manage and control your displays remotely via SmartControl

**Innovative solutions for any signage application**

- Free and easy-to-use content management with SmartCMS
- Connect and control your content via the cloud with HTML5
- Schedule what you want, when you want with SmartPlayer
- Connect your display and start sharing with DLNA

**Care about you, your business and your audience**

- SmartPower for energy saving

# E-line

Connect with your audience 24/7 with the future proof SmartCollection

With the energy efficient E-line, you will enjoy all the benefits of state-of-the-art connectivity and content management possibilities while being ensured that remote management safeguards the lowest cost of ownership.

## Optimized for public viewing

- Full HD LED technology for brilliant images
- Designed for 24/7 operation

## Maximizing the impact of your message

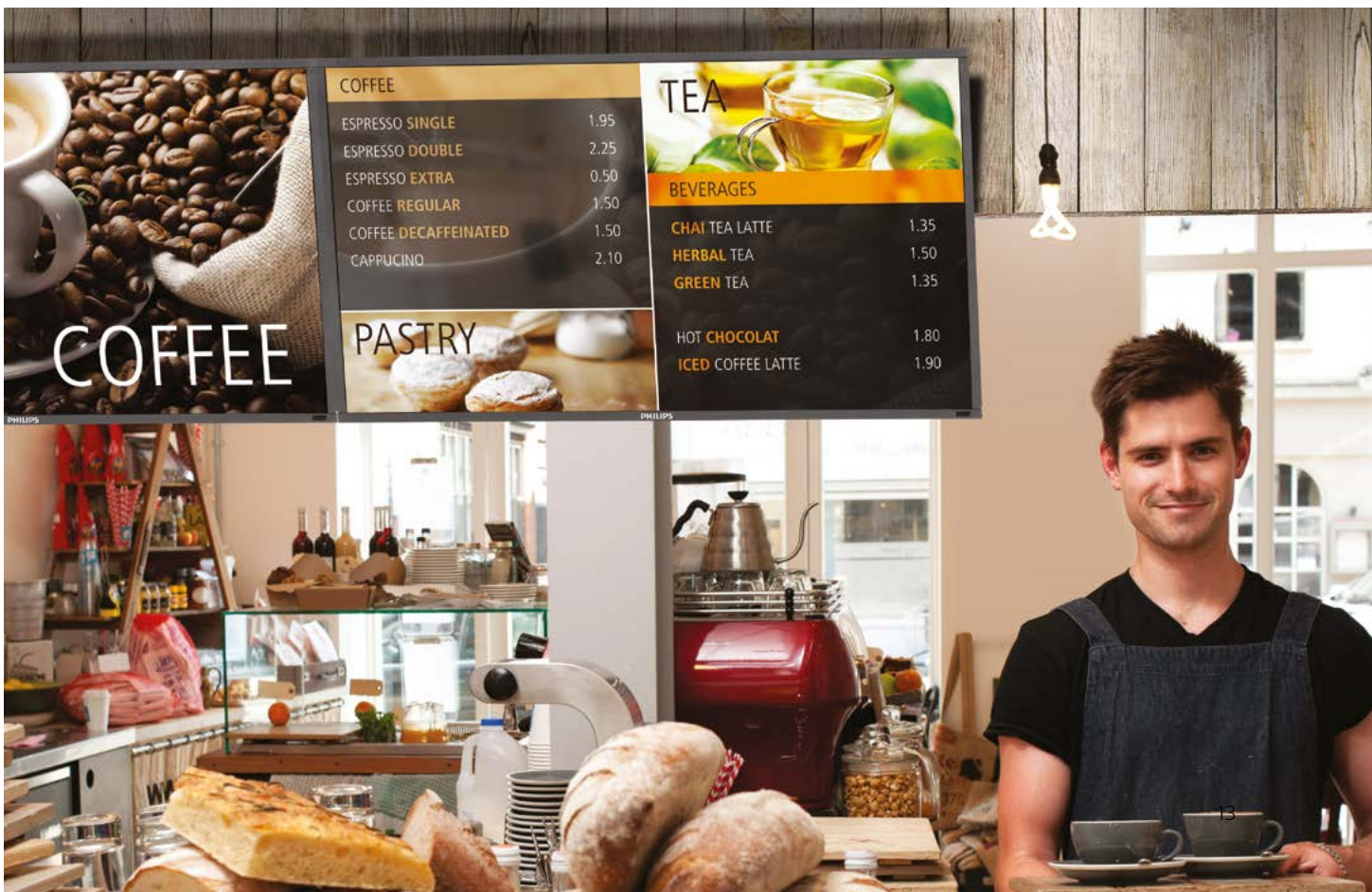
- Manage and control your network remotely via SmartControl

## Innovative solutions for any signage application

- Free and easy-to-use content management with SmartCMS
- Connect and control your content via the cloud with HTML5
- Schedule what you want, when you want with SmartPlayer
- OPS Insert to create an all-in-one digital signage solution
- Connect your display and start sharing with DLNA

## Care about you, your business and your audience

- SmartPower for energy saving
- Keep your content up and running with FailOver
- Show clinical images consistently with high quality with Clinical D-Image





V-line

## Connect with your audience 24/7 with High Brightness displays and the future proof SmartCollection

With the High Brightness V-line, you will enjoy all the benefits of state-of-the-art connectivity and content management possibilities while being ensured that remote management safeguards the lowest cost of ownership.

| DEPARTURES |             |        |      |            |
|------------|-------------|--------|------|------------|
| TIME       | DESTINATION | FLIGHT | GATE | STATUS     |
| 10:15      | PISA        | WG236  | A4   | BOARDING   |
| 10:20      | DUBLIN      | VHBAG  | A18  | BOARDING   |
| 10:30      | MALAGA      | VHTFU  | B12  | BOARDING   |
| 10:35      | BARCELONA   | WW635  | A78  | BOARDING   |
| 10:35      | BERLIN      | R2492  | D12  | BOARDING   |
| 10:35      | MOSCOW      | S1589  | A5   | DELAYED    |
| 10:40      | NEW YORK    | WW635  | F45  | BOARDING   |
| 10:40      | PARIS       | XV179  | F63  | BOARDING   |
| 10:45      | ORLANDO     | VHTLB  | A8   | CANCELLED  |
| 10:45      | BOSTON      | WJ474  | B78  | BOARDING   |
| 10:50      | BUDAPEST    | WB491  | B70  | BOARDING   |
| 10:50      | LAS VEGAS   | WW633  | A95  | GO TO GATE |
| 11:00      | BRUSSELS    | XV493  | B9   | GATE OPEN  |
| 11:00      | MARSEILLE   | K7381  | C13  | GO TO GATE |
| 11:00      | AMSTERDAM   | VHANA  | D35  | GO TO GATE |
| 11:00      | REYKJAVIK   | WW603  | A7   | GO TO GATE |
| 11:00      | PORTO       | XH117  | A38  | DELAYED    |
| 11:05      | ROME        | ZA718  | A42  | GO TO GATE |
| 11:05      | CAYO COCO   | VHAET  | A6   | GATE OPEN  |
| 11:10      | TRIPOLI     | VHQJH  | E12  | GO TO GATE |

- 55"
- 46"
- 42"

### Optimized for public viewing

- Full HD LED technology for brilliant images
- High Brightness for clearer images
- Designed for 24/7 operation

### Maximizing the impact of your message

- Manage and control your network remotely via SmartControl
- Advanced Colour Calibration kit to ensure perfect and uniform colours

### Innovative solutions for any signage application

- Free and easy-to-use content management with SmartCMS
- Connect and control your content via the cloud with HTML5
- Schedule what you want, when you want with SmartPlayer
- OPS Insert to create an all-in-one digital signage solution
- Connect your display and start sharing with DLNA

### Care about you, your business and your audience

- SmartPower for energy saving
- Keep your content up and running with FailOver
- Show clinical images consistently with high quality with Clinical D-Image

# U-line

## Ultimate large screen experience in Ultra HD

Experience your Signage Solutions like never before thanks to the ultra large displays with four times the resolution of a conventional Full HD display. An image so refined, so lifelike, it's a window to a new world.

### Optimized for public viewing

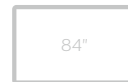
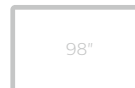
- 4K Ultra HD: resolution like you've never seen it before
- Portrait mode operability
- Designed for 24/7 operation

### Maximizing the impact of your message

- Manage and control your network remotely via SmartControl

### Care about you, your business and your audience

- Keep your content up and running with FailOver
- SmartPower for energy saving





X-line



## Create new stopping power with Ultra Narrow Bezel displays

Impress your audience with the most impactful video wall. With ultra narrow bezel and stunning picture quality, you are sure to create the most memorable visual experience.



55"

47"

46"

### Optimized for public viewing

- Full HD LED technology for brilliant images
- High Brightness for clearer images
- Designed for 24/7 operation

### Maximizing the impact of your video wall

- Immersive visual experience with Ultra Narrow Bezel
- Advanced Colour Calibration kit to ensure perfect and uniform colours
- Manage and control your video wall remotely via SmartControl

### Innovative solutions for any signage application

- Optional OPS Insert to create an all-in-one digital signage solution

### Care about you, your business and your audience

- SmartPower for energy saving
- Keep your content up and running with FailOver



# T-line

Discover a new level of interaction with true Multi-Touch displays

Get even closer to your audience than ever before. Fast, precise and extremely durable, its high performance is matched by excellent reliability and functionality.

## Optimized for public viewing

- Full HD LED technology for brilliant images
- Designed for 24/7 operation
- Picture-in-picture for advanced remote presentation possibilities

## Supreme audience interaction

- Multi-Touch technology for advanced user interaction
- True Multi-Touch with multiple simultaneous touch points
- USB Plug-and-Play with HID compliance
- Compatible with all leading operating systems

## Maximizing the impact of your message

- Manage and control your network remotely via SmartControl

## Care about you, your business and your audience

- SmartPower for energy saving
- Keep your content up and running with FailOver



• Anti-glare



# Specifications

| >   | Q-line   |  |                          |                          |  | E-line  |  |                            |                          |                           |
|---|--|--|--------------------------|--------------------------|--|---|--|----------------------------|--------------------------|---------------------------|
| Model                                     | BDL3220QL  | BDL4220QL  | BDL4620QL                | BDL5520QL                | BDL6520QL                                      | BDL3260EL   | BDL4260EL  | BDL4660EL                  | BDL4765EL                | BDL5560EL                 |
| <b>Picture / Display</b>                  |  |  |                          |                          |  |   |  |                            |                          |                           |
| Diagonal Size                             | 32 inch  | 42 inch  | 46 inch                  | 55 inch                  | 65 inch  | 32 inch   | 42 inch  | 46 inch                    | 47 inch                  | 55 inch                   |
| Backlight Type                            | E-LED  |  |                          |                          |  | E-LED   |  |                            |                          |                           |
| Panel Technology                          | MVA  | MVA  | MVA                      | IPS                      | SMVA   | IPS   | IPS  | AMVA                       | IPS                      | IPS                       |
| Resolution                                | 1920 x 1080p   |  |                          |                          |  | 1920x1080p  |  |                            |                          |                           |
| Brightness cd/m <sup>2</sup>              | 350  | 350  | 350                      | 350                      | 350  | 400   | 450  | 500                        | 500                      | 450                       |
| Contrast Ratio                            | 3000:1   | 3000:1   | 4000:1                   | 1400:1                   | 5000:1   | 1300:1  | 1300:1   | 4000:1                     | 1400:1                   | 1300:1                    |
| Dynamic Contrast Ratio                    | 500,000:1  |  |                          |                          |  | 500,000:1   |  |                            |                          |                           |
| Response Time                             | 6.5 ms   | 6.5 ms   | 8 ms                     | 8 ms                     | 6.5 ms   | 25 ms   | 12 ms  | 6.5 ms                     | 12 ms                    | 12 ms                     |
| Aspect Ratio                              | 16:9   |  |                          |                          |  | 16:9  |  |                            |                          |                           |
| Viewing Angle                             | 178° x 178°  |  |                          |                          |  | 178° x 178°   |  |                            |                          |                           |
| Display Colours                           | 16.7 M   | 16.7 M   | 16.7 M                   | 16.7 M                   | 1073 M   | 16.7 M  | 1073 M   | 1073 M                     | 1073 M                   | 1073 M                    |
| Placement                                 | Landscape  |  |                          |                          |  | Portrait, Landscape   |  |                            |                          |                           |
| Touch Technology                          | -  |  |                          |                          |  | OTE3204 Compatible  | -  |                            |                          |                           |
| Touch Points                              | -  |  |                          |                          |  | -   |  |                            |                          |                           |
| <b>Features</b>                           |  |  |                          |                          |  |   |  |                            |                          |                           |
| SmartCollection                           | SmartPower, SmartControl, SmartPlayer, HTML5-browser, SmartConnect, SmartCMS |  |                          |                          |  | SmartPower, SmartControl, Failover, D-Image, SmartPlayer, HTML5-browser, SmartConnect, OPSinsert (>42"), SmartInsert, SmartCMS, Color Calibration Kit |  |                            |                          |                           |
| <b>Energy Efficiency</b>                  |  |  |                          |                          |  |   |  |                            |                          |                           |
| Mains Power                               | 100 ~ 240 VAC  |  |                          |                          |  | 100 ~ 240 VAC, 50 ~ 60 Hz   |  |                            |                          |                           |
| Consumption (Energy Star 6.0 Test Method) | 36W  | 55W  | 60W                      | 70W                      | 122W   | 48.57W  | 104.49W  | 93.26W                     | 85.51W                   | 122.52W                   |
| Standby Mode                              | <0.5W  |  |                          |                          |  | <0.5W   |  |                            |                          |                           |
| <b>Connectivity</b>                       |  |  |                          |                          |  |   |  |                            |                          |                           |
| video                                     | input  | 1x HDMI, 1x VGA, 1x YPbPr, 1x DVI-D, 1x USB 2.0, 1x composite (share with YPbPr) |                          |                          |  | 1x VGA, 1x DVI-D, 1x Display port, 1x Composite, 1x Component, 2x HDMI  | 1x VGA, 1x DVI-D, 1x USB 2.0, 1x Display port, 1x Composite, 1x Component, 2x HDMI |                            |                          |                           |
|   | output   | No   |                          |                          |  | 1x DVI-I, 1x VGA (via DVI-I), 1 x DP  | 1x DVI-I, 1x VGA (via DVI-I), 1 x DP   |                            |                          |                           |
| audio                                     | input  | 1x RCA jack, 1x 3.5 jack   |                          |                          |  | 1x 3.5mm jack, 1x Audio L/R (RCA)   | 1x 3.5mm jack, 1x Audio L/R (RCA)  |                            |                          |                           |
|   | output   | 1x SPDIF, 1x 3.5 jack  |                          |                          |  | 1x Audio L/R (RCA), 1x external speaker terminal  | 1x Audio L/R (RCA), 1x external speaker terminal                                   |                            |                          |                           |
|   | internal speakers  | 2x 5W RMS  | 2x 7W RMS                | 2x 7W RMS                | 2x 7W RMS                                      | 2x 10 W (RMS)   | 2x 10 W (RMS)  |                            |                          |                           |
| control                                   | RS232 daisy-chain, RJ-45, HDMI CEC, IR loop-through                          |  |                          |                          | RS232 in/out, 1x RJ45, One wire (HDMI), Ir-out | RS232 in/out, 1x RJ45, One wire (HDMI), Ir-out  |  |                            |                          |                           |
| <b>Physical Specifications</b>            |  |  |                          |                          |  |   |  |                            |                          |                           |
| Set Dimensions in mm (WxHxD)              | 745.0 x 439.5 x 39.8 mm  | 980.4 x 572.9 x 38.5 mm  | 1068.0 x 622.5 x 38.8 mm | 1264.7 x 735.5 x 42.8 mm | 1450.48 x 828.52 x 61.5 mm                     | 750.2 x 444.6 x 69 mm   | 965.8 x 558.8 x 69 mm  | 1052.7 x 607.3 x 69 mm     | 1068.6 x 612.8 x 54.9 mm | 1247.0 x 717.8 x 70 mm    |
| Display Weight in Kg                      | 6.53 Kg  | 11.9 Kg  | 13.7 Kg                  | 17.86 Kg                 |  | 11.4 Kg   | 18.3 Kg  | 22.0 Kg                    | 18.2 Kg                  | 30.3 Kg                   |
| Bezel Width in mm                         | 19 mm  | 19.7 mm  | 19.7 mm                  | 24 mm                    | 7.5 (Top/Left/Right) 10.5 (Bottom)             | 24.4 mm   | 15.8 mm  | 15.8 mm                    | 9.9 mm                   | 15.8 mm                   |
| VESA Mount in mm                          | 200x100  | 400x400  | 400x400                  | 400x400                  | 400x400  | 400x200   | 400x200, 200x200   | 400 x400, 400x200, 200x200 | 400x200                  | 400x400, 400x200, 200x200 |
| Smart Insert Mount                        |  |  |                          |                          |  | 100x100   | 100x100, 200x100   | 100x100, 200x100           | 100x100, 200x100         | 100x100, 200x100          |
| Table Stand (optional)                    | BM02541  | BM02542  | BM02542                  | BM02542                  | N/A  | BM02541   | BM02542  |                            |                          |                           |
| <b>Convenience</b>                        |  |  |                          |                          |  |   |  |                            |                          |                           |
| Service & Warranty                        | 3 years  |  |                          |                          |  | 3 years   |  |                            |                          |                           |
| MTBF                                      | 50.000 hrs   |  |                          |                          |  | 50.000 hrs  |  |                            |                          |                           |

| V-line   |                        |                        | U-line   |                              | X-line   |  |  | T-line  |                                     |  |
|--|------------------------|------------------------|--|------------------------------|--|--|--|---|-------------------------------------|--|
| BDL4280VL  | BDL4680VL              | BDL5580VL              | BDL8470EU  | BDL9870EU                    | BDL4678XL/<br>BDL4677XH                                    | BDL4777XL  | BDL5588XL/<br>BDL5588XH  | BDL4256ET   | BDL5556ET                           | BDL6526QT  |
| 42 inch  | 46 inch                | 55 inch                | 84 inch  | 98 inch                      | 46 inch  | 47 inch  | 55 inch  | 42 inch   | 55 inch                             | 65 inch  |
| E-LED  |                        |                        | E-LED  |                              | D-LED  |  |  | E-LED   |                                     |  |
| IPS  | AMVA                   | AMVA                   | IPS  |                              | SVA  |  | IPS  | IPS   |                                     | SMVA   |
| 1920 x 1080p   |                        |                        | 3840x2160p   |                              | 1920x1080p   |  |  | 1920x1080p  |                                     |  |
| 700  |                        |                        | 500  |                              | 500 (BDL4678XL)<br>700 (BDL4677XH)                         | 500  | 500 (BDL5588XL)<br>700 (BDL5588XH)                                     | 450   | 450                                 | 350  |
| 1300:1   | 4000:1                 | 4000:1                 | 1400:1   | 1300:1                       | 3500:1   | 1400:1   | 1400:1   | 1300:1  | 1300:1                              | 5000:1   |
| 500,000:1  |                        |                        | 500,000:1  |                              | 500,000:1  |  |  | 500,000:1   |                                     |  |
| 12 ms  | 6.5 ms                 | 6.5 ms                 | 12 ms  |                              | 8 ms   | 12 ms  | 12 ms  | 12ms  | 12ms                                | 8 ms   |
| 16:9   |                        |                        | 16:9   |                              | 16:9   |  |  | 16:9  |                                     |  |
| 178° x 178°  |                        |                        | 178°/178°  |                              | 178° x 178°  |  |  | 178° x 178°   |                                     |  |
| 1073 M   | 1073 M                 | 1073 M                 | 1073 M   |                              | 16.7 M   | 1073 M   | 1073 M   | 1073 M  | 1073 M                              | 1073 M   |
| Portrait, Landscape  |                        |                        | Portrait, Landscape  |                              | Portrait, Landscape  |  |  | Portrait, Landscape   |                                     | Landscape  |
| -  |                        |                        | -  |                              | -  |  |  | Optical   |                                     | Optical-<br>Antiglare  |
| -  |                        |                        | -  |                              | -  |  |  | 6 Touch Points  |                                     |  |
| SmartPower, SmartControl, Failover, D-Image, SmartPlayer, HTML5-browser, SmartConnect, OPSinsert, SmartInsert, SmartCMS, Color Calibration Kit |                        |                        | 4K Ultra HD Resolution, SmartControl, FailOver, SmartPower             |                              | Color Calibration Kit, SmartPower, SmartControl, OPSinsert | Color Calibration Kit, SmartPower, SmartControl, OPSinsert | Color Calibration Kit, SmartPower, SmartControl, OPSinsert             | Plug&Play Touch (HID Compliant), Failover, D-Image, Smart Insert, OPSinsert |                                     | Plug&Play Touch, SmartPower, SmartControl, SmartPlayer                 |
| 100 ~ 240 VAC, 50 ~ 60 Hz  |                        |                        | 100 ~ 240 VAC, 50 ~ 60 Hz  |                              | 90 ~ 240 VAC, 50 ~ 60 Hz                                   | 100 ~ 240 VAC, 50 ~ 60Hz                                   | 90 ~ 240 VAC, 50 ~ 60 Hz   | 90 ~ 240 VAC, 50 ~ 60 Hz  |                                     |  |
| 97.54W   | 92.41W                 | 110W                   | 400W   | 500W                         | 75W (BDL4678XL)<br>95W (BDL4677XH)                         |  | 110W (BDL5588XL)<br>175W (BDL5588XH)                                   | 95W   | 110W                                | 120W   |
| < 0.5W   |                        |                        | < 0.5W   |                              | < 0.5W   |  |  | < 0.5W  |                                     |  |
| 1x VGA, 1x DVI-D, 1x USB 2.0, 1x Display port, 1x Composite, 1x Component, 2x HDMI   |                        |                        | 1x VGA, 1x DVI-D, 1x Display Port, 1x Composite, 1x Component, 3x HDMI |                              | 1x VGA, 1x DVI-D, 1x DP, 1x Component, 1x HDMI             | 1x VGA, 1x DVI-D, 1x DP, 1x Component, 1x HDMI             | 1x VGA, 1x DVI-D, 1x Display port, 1x Composite, 1x Component, 2x HDMI | 1x VGA, 1x DVI-D, 1x Composite, 1x Component, 1x HDMI, 1x Display Port      |                                     | 1x VGA, 1x DVI-D, 1x Composite, 1x Component, 2x HDMI, 1x Display Port |
| 1x DVI-I, 1x VGA (via DVI-I), 1x DP  |                        |                        | 1x DisplayPort   |                              | 1x DVI-D/ VGA  |  | 1x DVI-I, 1x VGA (via DVI-I), 1x DP                                    |   | 1x DVI-I, 1x VGA (via DVI-I), 1x DP |  |
| 1x 3.5mm jack, 1x Audio L/R (RCA)  |                        |                        | 1x RCA jack  |                              | 1x 3.5mm jack, 1x Audio L/R (RCA)                          |  |  | 1x 3.5mm jack, 1x Audio L/R (RCA)   |                                     |  |
| 1x Audio L/R (RCA), 1x external speaker terminal   |                        |                        | 1x RCA jack, 1x external speaker terminal                              |                              | 1x Audio L/R (RCA), 1x external speaker terminal           |  |  | 1x Audio L/R (RCA), 1x external speaker terminal                            |                                     |  |
| 2x 10 W (RMS)  |                        |                        | 2x 10 W (RMS)  |                              | 2x 10W (RMS)   |  |  | 2x 10W (RMS)  |                                     |  |
| RS232 in/out, 1x RJ45, One wire (HDMI), Ir-out   |                        |                        | RS232 in/out, 1x RJ45  |                              | RS232 (in/out), 1x RJ45, IR (in/out)                       | RS232 (in/out), 1x RJ45, IR (in/out)                       | RS232 in/out, 1x RJ45, One wire (HDMI), Ir-out                         | RS232 in/out, 1x RJ45   |                                     | RS232 in/out, 1x RJ45, One wire (HDMI), Ir-out                         |
| 965.8 x 558.8 x 69 mm  | 1052.7 x 607.3 x 69 mm | 1244.4 x 715.2 x 69 mm | 1910.00 x 1102.00 x 77.80 mm   | 2193.20 x 1248.20 x 88.30 mm | 1023.98 x 578.57 x 125.7/108.1 mm                          | 1044.9 x 590.0 x 108.8 mm                                  | 1213.4 x 686.9 x 103.35 mm   | 976.16 x 569.5 x 79.8 mm  | 1257.3 x 728.1 x 79.0 mm            | 1488.4 x 863.4 x 78.1 mm   |
| 18.3 Kg  | 22.0 Kg                | 30.2 Kg                | 70.0 Kg  | 91.4 Kg                      | 23.0 Kg  | 25.5 Kg  | 29.2 Kg  | 24.75 Kg  | 43.0 Kg                             | 54.4 Kg  |
| 15.8 mm  |                        |                        | 22.6 (R/L), 25.6 (T/B) mm  | 16.0 mm                      | 5.5 mm A-to-A  | 4.9 mm A-to-A  | 3.5 mm A-to-A  | 19.5 mm   | 19.5 mm                             | 26.2 mm  |
| 400x200, 200x200   |                        |                        | 600x500  | 800x500                      | 400x200, 200x200   | 400x400, 400x200, 200x200                                  | 400x400  | 400 x 200, 200 x 200  | 400x400, 400x200, 200x200           | 400 x 400  |
| 100x100, 100x200   |                        |                        | 100x100, 100x200   | 100x100, 100x200             | No   | No   | 100x100, 200x100   | 100x100, 200x100 mm   | 100x100, 200x100                    | 100x100, 200x100   |
| BM02542  |                        |                        |  |                              |  | BM05462  |  | BM05462   |                                     | N/A  |
| 3 years  |                        |                        | 3 years  |                              | 3 years  |  |  | 3 years   |                                     |  |
| 50.000 hrs   |                        |                        | 50,000 hrs   |                              | 50.000 hrs   |  |  | 50.000 hrs  |                                     |  |

