

iRacksystem

RX Series



OPEN RACK



V02/2014

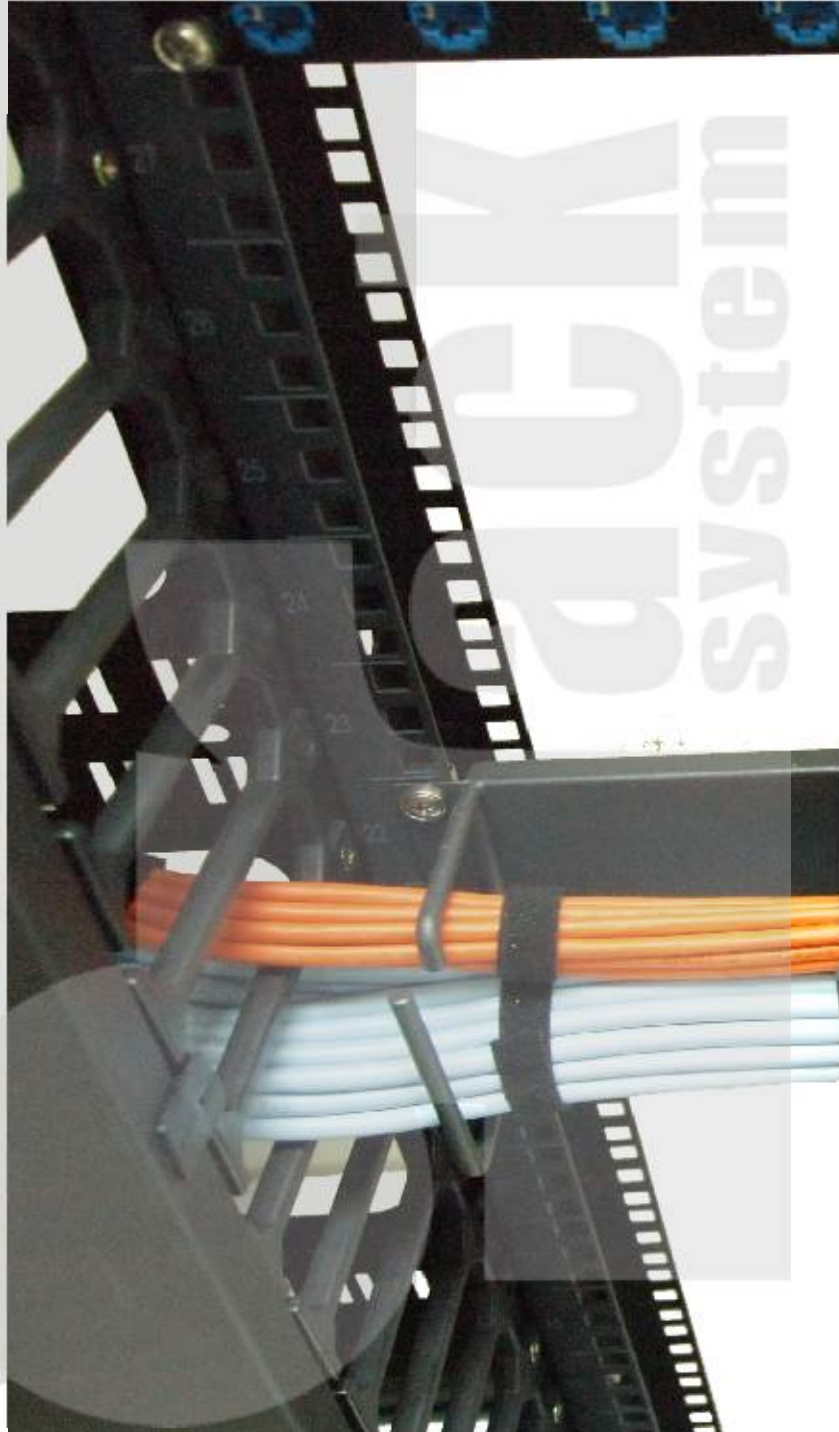
RX Series

Full Height Vertical Cable Management Guide provide perfect cable management for all UTP / Fibre solution.

Plastic material provide better protection of the cables.



Vertical Cable Management with Removable Cover can provide better protection and better looking for the cabling inside.





Plastic, 135mm Deep Vertical Cable Management Guide provides better banding radius and protection of the cables (UTP / Fibre).

RX Series

Data Open Rack

RX Data Open Rack, a two post design racking system provide a clear and simple installation in a distribution rooms for flexible networks and other systems.



RX Data Open Rack (with Vertical Cable Management Guide at both side)

SPECIFICATIONS

Dimension

- Width :20.3" or 515.62mm
- Depth : 15" or 381mm
- Height: 42U, 45U or 47U

Color

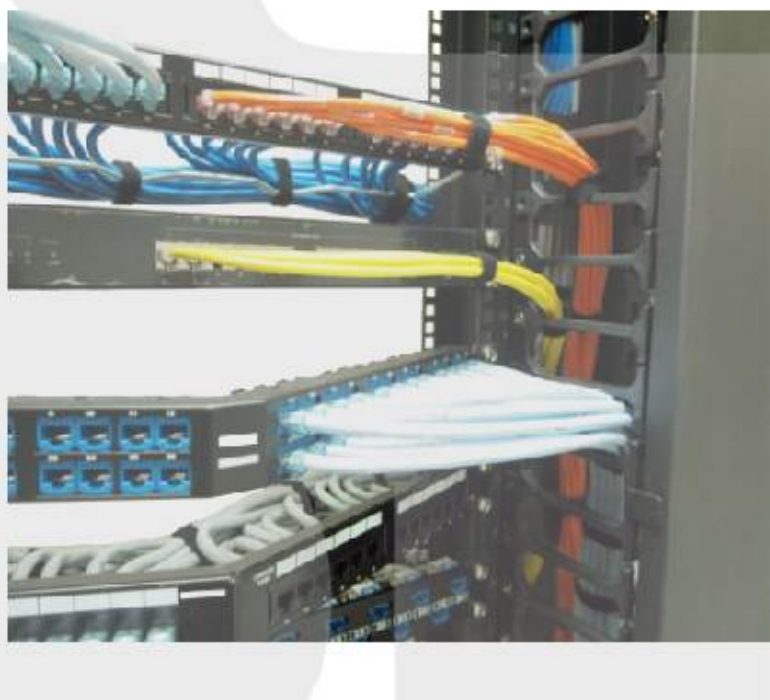
- Black

Framework

- Open Floor-Mounted two-post Rack Support
- EIA 19 Std. Rack-mount equipment

Vertical Channels

- 3" depth, Vertical Channels with EIA 19 Std. Mounting Width x 2 pcs
- with square mounting holes



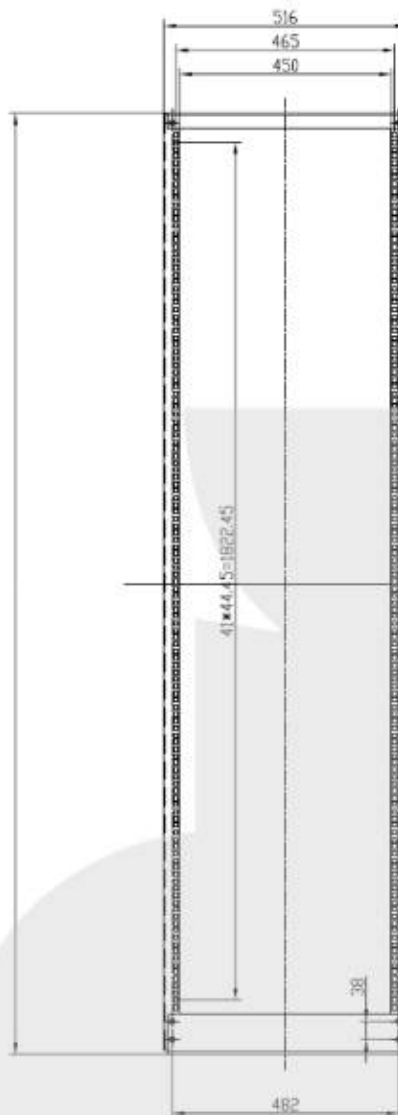
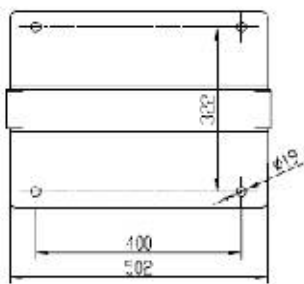
Base / Plinth

Data Open Rack

Dimension Diagram



RX Data Open Rack (Frame only)



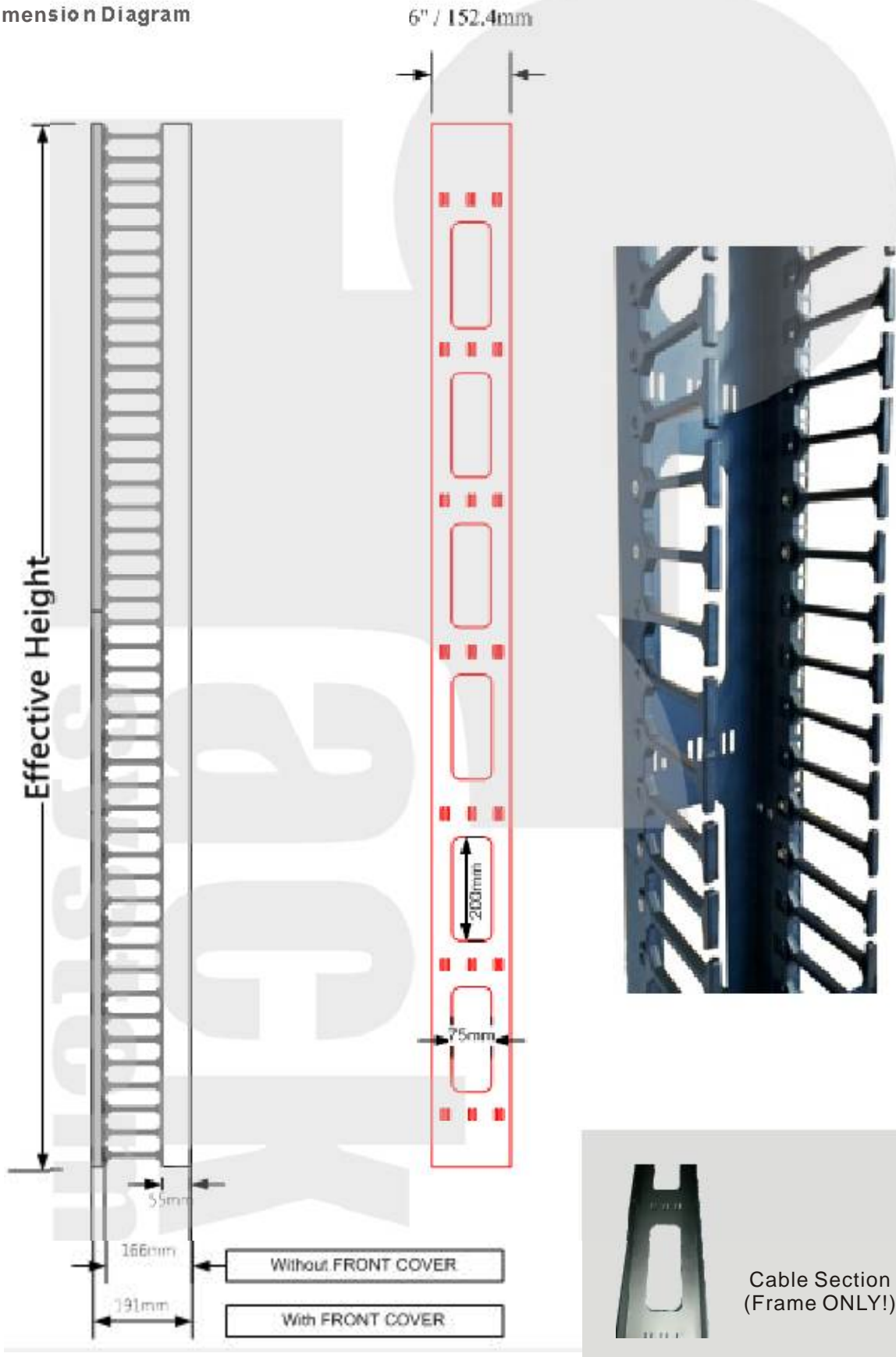
ORDERING DETAILS (frame only)

Series	Order Code	Effective Height "U"	Dimension (WxDxH) mm	Channel Depth
42U Series				
RX	RX-RT42-3B	42U	515.62 x 381 x 2000 mm	3"
45U Series				
RX	RX-RT45-3B	45U	515.62 x 381 x 2134 mm	3"
47U Series				
RX	RX-RT47-3B	47U	515.62 x 381 x 2223 mm	3"

RX Series

Data Open Rack - Cable Section

Dimension Diagram



Data Open Rack - Cable Section

Vertical Cable Management Channel

RX Series



ORDERING DETAILS (vertical management channel)

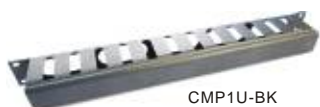
Series	Order Code	Effective Height "U"	Dimension (H) mm
Single Side Vertical Cable Guide with finger			
RX	RX-VMG42	42U	2000mm
RX	RX-VMG45	45U	2134mm
RX	RX-VMG47	47U	2223mm

Door Upgrade

Series	Order Code	Effective Height "U"	Description
RX	RX-VP42	42U	Effective Height 42U
RX	RX-VP45	45U	Effective Height 45U
RX	RX-VP47	47U	Effective Height 47U



ACCESSORIES



CMP1U-BK



CMP2U-BK

Cable Management Panel

For cable collection and better cable management. Cover give better protection against damaging the cable inside and provide neat looking.

Material : Steel
Depth : (1U) 75mm; (2U) 90mm
- fixing screws & cage nuts (4)

Des ciptbn	Height(U)	Co br	Or drNo .
1U CableM anagementP nelw ithc ue (Steel)	1U	Black	CMP 1U - B
1U CableM anagementP nelw ithc ue (Steel)	1U	LghtGr ye	CMP 1U - G
2U CableM anagementP nelw ithc ue (Steel)	2U	Black	CMP 2U - B
2U CableM anagementP nelw ithc ue (Steel)	2U	LghtGr ye	CMP 2U - G



JRP1U-BK

Jumper Ring Panel

Gives a easy and flexible way to organize the patch cords.

Material : Steel
Depth : 78mm
- fixing screws & cage nuts (4)

Des ciptbn	Height(U)	Co br	Or drNo .
1U J nperR ingP nel (Steel)	1U	Black	JRP 1U - B
1U J nperR ingP nel (Steel)	1U	LghtGr ye	JRP 1U - G
2U J nperR ingP nel (Steel)	2U	Black	JRP 2U - B
2U J nperR ingP nel (Steel)	2U	LghtGr ye	JRP 2U - G
4U J nperR ingP nel (Steel)	4U	Black	JRP 4U - B
4U J nperR ingP nel (Steel)	4U	LghtGr ye	JRP 4U - G



PP-02GY
PP-01GY

Plain panel

To place in unused or vacant space, to block off airflow.

Material : Steel
- fixing screws & cage nuts (4)

Des ciptbn	Height(U)	Co br	Or drNo .
1U P ainP nel (eet)	1U	Black	FP -1B K
1U P ainP nel (eet)	1U	LghtGr ye	FP 01GY
2U P ainP nel (eet)	2U	Black	FP -2B K
2U P ainP nel (eet)	2U	LghtGr ye	FP 02GY
4U P ainP nel (eet)	4U	Black	FP -4B K
4U P ainP nel (eet)	4U	LghtGr ye	FP 04GY
5U P ainP nel (eet)	5U	Black	FP -5B K
5U P ainP nel (eet)	5U	LghtGr ye	FP 05GY
8U P ainP nel (eet)	8U	Black	FP -8B K
8U P ainP nel (eet)	8U	LghtGr ye	FP 08GY



FS-45BK



HRS-65BK

Front Mounting Shelves

These Front Mounting Shelves offer a particularly cost-effective solution. Beware of the loading of these shelves. Heavy equipment are not recommended to use with these shelves.

Material : Steel
Width : 447mm
- fixing screws & cage nuts (4)

Des c p tbn	Depth	Loadng	Color	Or drNo .
F on tMoun tng S hef 350mm Deep	350	25 Kg	B ac k	FS 35BK
F on tMoun tng S hef 350mm Deep	350	35 Kg	LghtGr ye	FS -5G Y
F on tMoun tng S hef 450mm Deep	450	35 Kg	B ac k	FS 45BK
F on tMoun tng S hef 450mm Deep	450	35 Kg	LghtGr ye	FS -5G Y
RaiM ountng Heav yDutyS hef 500m mDeep (of Open Rack)	500	75 Kg	B ac k	HRS -0B K
RaiM ountng Heav yDutyS hef 650m mDeep (of Open Rack)	650	75 Kg	B ac k	HRS -5B K



M6



NMM6

Screws & Nuts

These M6 sized square cage nuts and screws can be used for all mounting channels. Non-metallic screws also available.

Des cption	P ækof	O r ðrNo.
F kng Pak M 6Sc rwe Cage Nut)pac lo f50pc s	50 pc s	M 6
Non- M ælicS c w eHexNuts (M 6zi ðpac of50pc s	50 pc s	NMM6



CK-27/ 33 /37 /42/ 45 / 47

Copper Earth Bar Kit

Designed to mount either onto the vertical mounting angle or into the side of the cabinet these earth bars provide the ideal way of ensuring that all active equipment can be easily grounded. Full height or part height are available.

Des cption	Leng h	O r ðrNo.
47U Full heightCopper Bar Kit(ðn non- m ælics c w s& nu s x 3 s es	47U	CK -74
45U Full heightCopper Bar Kit(ðn non- m ælics c w s& nu s x 3 s es	45U	CK -54
42U Full heightCopper Bar Kit(ðn non- m ælics c w s& nu s x 3 s es	42U	CK -24
37U Full heightCopper Bar Kit(ðn non- m ælics c w s& nu s x 3 s es	37U	CK -73
33U Full heightCopper Bar Kit(ðn non- m ælics c w s& nu s x 3 s es	33U	CK -33
27U Full heightCopper Bar Kit(ðn non- m ælics c w s& nu s x 3 s es	27U	CK -72
19" horzionalCopper B æk ti(ðn nonm ætalic sc w s& nu s x2 s es)	1U	RM CK d



INAXT-20-25-BK



Quick Release Cable Tie

These Quick Release Cable Tie offer a very handy work when tidying up your UTP or Fibre Cables. All sizes are come in pack of roll. Other Color options are also available.

Des cption	w idth	leng h	Cob r	O r ðrNo.
Black 13mmw ide quic k æs ec æ æ tæ (10 ll)	13mm	25M	B æc k	NA X T3- æ- B K
Red, 13mmw ide quic k æs ec æ æ tæ (1 r ll)	13mm	25M	Red	NA X - 3- æ- B
Gr æn, 13mmw ide quic k æs ec æ æ tæ (10 ll)	13mm	25M	Gr æn	NA X - 3- æ- B
Black 20mmw ide quic k æs ec æ æ tæ (10 ll)	20mm	25M	B æc k	NA X Tæ- æ- B K
B ue, 20mm w ide quic k æs ec æ æ tæ (1 f ll)	20mm	25M	B ue	NA X Tæ- æ- B U
Wh ite, 20mmw ide quic k æs ec æ æ tæ (1 r ll)	20mm	25M	Wh ite	NA X Tæ- æ- W

