

XEROX®

Technology | Document Management | Consulting Services

Phaser® 7760



color laser printer

Phaser® 7760 Evaluator Guide



ABOUT THIS GUIDE

This guide will introduce you to the Xerox Phaser 7760 Color Printer, and help you in your printer evaluation process.

CONTENTS

Section 1 – Introducing the Xerox Phaser 7760 Color Printer

| | |
|-----------------------------|---|
| Product Overview | 1 |
| Phaser Configurations | 2 |

Section 2 – Evaluating Color Laser Printers

Suggests specific features to look for in a printer of this class, how to evaluate that feature, and how the Phaser 7760 rates.

| | |
|-----------------------------------|----|
| Print quality | 4 |
| Productivity | 8 |
| Network/IT-centric Features | 10 |

Section 3 – Configurations, Specifications, Part Numbers, etc.

| | |
|---|----|
| Configuration Summary and Options | 13 |
| Consumables and Maintenance Items | 13 |
| Media Supported | 14 |
| Print Quality Modes | 14 |
| Total Satisfaction Services | 14 |
| Competitive Comparisons | 15 |
| TekColor Corrections | 16 |
| Specifications | 16 |
| Information sources | 17 |



This guide was printed entirely on a Xerox Phaser 7760 Color Printer.

SECTION 1

Introducing the Xerox Phaser® 7760 Color Printer



PRODUCT OVERVIEW

The Phaser 7760 is the “designer’s choice” – the premier tabloid (11 x 17 in.) color printer for today’s demanding color professionals. Combining the highest print quality of any printer in its class with fast color and black-and-white print speeds, the Phaser 7760 color printer meets the image quality, performance, and ease of use demands of graphics professionals and color-intensive, high-volume workgroups and departments.

Print Quality for the Graphic Artist

Three print modes are available on the Phaser 7760 color printer to optimize print quality for a variety of applications – Standard Mode utilizes 600 x 1200 dpi for vibrant color at up to 35 ppm; Enhanced Mode utilizes true 1200 x 1200 dpi emphasizing fine line details and crisp text; Photo Mode utilizes 600 x 600 x 4 dpi to produce smooth and accurate color transitions making it a perfect choice for printing difficult-to-match flesh tones.

The Phaser 7760 printer’s color quality and color management capabilities is bolstered by PhaserMatch® 4.0 software (standard in the GX and DX configurations) – which deliver expert color control including advanced printer calibration with PhaserCal® software, a variety of color correction profiles, and the ability to edit and create new color correction profiles.

Outstanding Performance and Media Flexibility

Print speeds as fast as 35 ppm for color and 45 ppm for black and white make Phaser 7760 one of the fastest printers in its class. With up to 1 GB of memory and an 800 MHz image processor, the Phaser 7760 quickly rips complex files to maximize throughput and deliver a first-page-out time as fast as 9 seconds for color. Combine these performance capabilities with support for a broad range of media types, sizes, and weights and your choice of two powerful finisher options, and the Phaser 7760 color printer delivers the productivity to support busy and demanding graphics professionals and office departments.

Unparalleled Printer Intelligence and Ease-of-Use

The Phaser 7760 color printer continues the Phaser tradition of superior user-friendly tools and features including:

- Phaser Installer – automatically locates and displays the printer(s) for easy, four-step driver installation
- Designed to be used as desktop or floor standing model with easy front and side-access to consumables - avoiding the need to move the printer
 - Toner cartridges, for example, are easily replaced by opening the front door
- Smart Trays technology – user can choose paper source in print driver based on media size, type, or tray number
- PrintingScout alerts – provide instant, on-screen instructions if the printer needs attention
- PhaserSMART® remote diagnostic tool – a powerful online troubleshooting solution
- CentreWare® Internet Services – for managing, configuring, and troubleshooting from your desktop

Phaser 7760 Configurations



PHASER 7760DN STANDARD FEATURES

The Phaser 7760DN comes with many performance and productivity features standard:

- Up to 35 ppm color, 45 ppm black-and-white
- 800 MHz PowerPC® G4 processor
- 512 MB memory (maximum 1 GB)
- True Adobe® Postscript® 3™
- Color first-page-out as fast as 9 seconds
- Automatic two-sided printing
- USB 2.0 and 10/100/1000BaseTX Ethernet connectivity
- Selectable print resolution - Standard, Enhanced, Photo
- 650 sheet input capacity
 - Supported paper size from 3.95 x 5.5 in. up to 11 x 17 in.
 - Up to 12 x 18 in. supported via tray 1/multi-purpose tray
 - Custom paper size up to 12 x 47.25 in. or 12.6 x 30 in.
- Supports media from 20 lb. Bond to 90 lb. Cover (75 to 255 gsm)
- 150,000 page monthly duty cycle
- One year on-site warranty
- Xerox Total Satisfaction Guarantee

PHASER 7760GX STANDARD FEATURES

The Phaser 7760GX comes with all the features of the Phaser 7760DN plus:

- PhaserMatch® 4.0
- 1,500-sheet high-capacity feeder
 - Three 500-sheet configurable paper trays supporting up to 11 x 17 in. media
- Two optional finishers

PHASER 7760 FINISHING OPTIONS

The Phaser 7760GX and Phaser 7760DX offer two finishing options

Advanced Finisher

- 3,500 sheets stacker
- 50-sheet multiple position stapler
- 3-hole punch





PHASER 7760DX STANDARD FEATURES

The Phaser 7760DX comes with all the features of the Phaser 7760DN **plus**:

- PhaserMatch® 4.0
- 2,500-sheet high-capacity feeder
 - One 500-sheet configurable paper tray supporting up to 11 x 17 in. media
 - Two 1,000-sheet paper Trays supporting up to 8.5 x 11 in. media
- Two optional finishers

Professional Finisher



- 2,000 sheets stacker
- 50-sheet multiple position stapler
- 3-hole punch
- Booklet Maker

PRINTING FEATURES

Common Printing Features:

- Watermark printing
- N-up printing
- Separation pages
- Cover sheets
- Automatic tray selection

Advanced Printing Features:

- Intelligent Ready
- PhaserCal
- Configurable Automatic Color Correction
- TekColor color correction simulation libraries (sRGB, LCD, SWOP, Commercial Press, Euroscale, Japan Color, SNAP)
- Spot color
- CentreWare Internet Services embedded web server
- CentreWare Web
- Remote printing
- Billing Meters
- Job Accounting
- Usage Analysis Tool
- Job Completion Notification
- Email alerts
- Enhanced PrintingScout
- PhaserSMART
- Electronic Collation
- Configuration Card
- Configurable Tray 1 behavior
- Run Black
- Smart Duplex
- Automatic Driver Configuration
- Saved Print
- Secure Print
- Proof Print
- Personal Print
- Print With
- Font Storage

SECTION 2

Evaluating Color Laser Printers

Tabloid-size (11 x 17 in.) color printers open up a wide range of creative possibilities for color professionals to create dynamic, attention-grabbing documents. Small and medium-sized print runs that once had to be outsourced can now be produced inexpensively and conveniently at the click of a mouse. With many models from many vendors offering a wide variety of features and capabilities, evaluating and selecting the right tabloid color printer for your business can be a difficult task.

Based on years of research and experience with the real-world needs of color printer users, Xerox has identified some key areas and issues for you to consider as you begin your own process of evaluating tabloid color printers. They include:

- **Print Quality (color accuracy and flexibility)**
- **Productivity (print speed and performance)**
- **Network/IT-Centric Features (ease of use/management, cost of ownership)**

This section of the Evaluator Guide will look at each of these areas, suggest ways you can evaluate a printer's performance and capabilities in these areas, and explain how the Phaser® 7760 printer exceeds the expectations of tabloid color printer users on all counts.

EVALUATE PRINT QUALITY

Beauty lies in the eye of the beholder, but there are specific attributes you can look for to determine the quality of the print output delivered by a color printer. Color consistency, color calibration capabilities, and advanced color matching are all key components to the ability of the printer to deliver the consistent, reliable print quality your company demands.

Look for color consistency

In sample print runs, watch for uniformity and consistency in large areas of solid fill. Check for smooth transitions where edges meet. Also, monitor image quality and color consistency from page to page during longer print jobs, particularly after 100 or 200 prints of the same image. Does the printer perform periodic automatic calibration to maintain print-to-print consistency?

Include a variety of elements in your test pages

Try color graphics, photo images, adjacent primary colors, large areas of solid color, color blends and gradients and text in various fonts, sizes and colors.

Check source file and platform compatibility

Can the printer handle the versions of PCL or Adobe PostScript that your software might produce? Some popular graphic applications, such as Adobe Photoshop®, Adobe InDesign®, or Adobe Illustrator®, depend on true PostScript compatibility for the best color quality and most accurate proofing capability.

Consider the range of color management capabilities

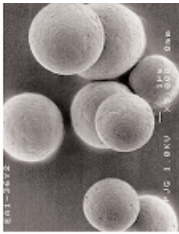
Look at the depth and breadth of color management capabilities – is the printer compatible with the most common industry standards (assuring you of image fidelity from screen to print)? Look at the ability to match color from different devices, i.e. copier, digital press, printing press or web pages.

Color quality has to do with much more than just counting dots on the page. The Phaser® 7760 printer blends the best technologies from previous Phaser printer products to provide superior color print quality, meeting the expectations of the most demanding color professionals and graphic artists.



Traditional Toner

EA Toner allows precise reproduction due to uniform toner size and shape.



EA Toner

Color consistency

Xerox is the company that invented xerographic printing, and since that time has remained a leader in the continuous improvement of that technology. The latest improvement is the invention of Emulsion Aggregation (EA) toners. This toner technology is a chemical process that “grows” very small, very consistently sized toner particles – rather than mechanically grinding them – to product very fine color detail and smooth transitions.

Automatic density control assures consistent color from the first print to the one-hundredth to the one-thousandth.

For the demanding color professional, PhaserCal® allows instrumented routine calibration and comes standard on all configurations of the Phaser 7760.

Mixed elements

When your document includes mixed elements such as graphics, text and photos – the Xerox-exclusive Automatic TekColor® setting applies the best color correction to each graphic element on the page. This assures you get the sharpest text, the brightest colors and the life-like images from your original file. A new feature in the Phaser 7760, called “black trapping,” improves the look of black text printed against a color background, and of color text printed against a black background.

Platform compatibility

No matter who on your network needs to print, the Phaser 7760 has them covered. Drivers include:

- True Adobe® PostScript® 3™ (default driver) to take full advantage of your printer’s custom features
- A PCL® driver can be used for applications requiring PCL
- Xerox Walk-Up Printing Driver (for Windows) enables printing from a PC to any Xerox PostScript-enabled printer. This is especially helpful to mobile professionals who travel to multiple locations and need to print to different printers.
- Macintosh® OS driver (OS 9.x or OSX 10.1 or higher)
- Unix drivers (Linux, Solaris™)

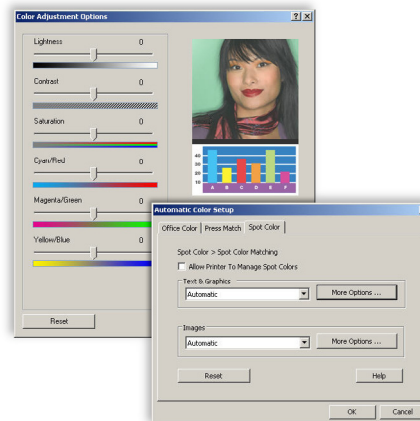
TEK-COLOR CORRECTIONS

Whether you are a creative color professional or an average office color user, the Phaser 7760 has a wide range of color capabilities available. The standard TekColor choices include:

- **Automatic**
- **Office Color**
 - sRGB Display
 - sRGB Vivid
 - LCD Display
- **Press Match**
 - SWOP Press
 - Euroscale Press
 - Commercial Press
 - SNAP Press
 - Japan Color
 - ISO Coated
 - ISO Uncoated
- **None**
- **Black and White**

Configurable Automatic TekColor Corrections

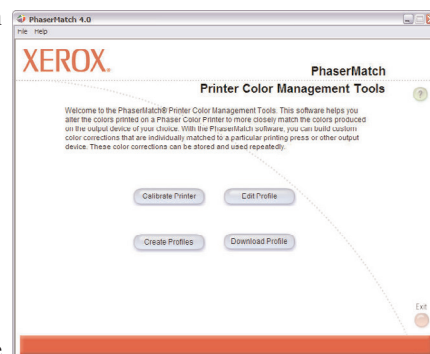
Using the Automatic mode for managing TekColor® Corrections enables the Phaser 7760 printer to automatically detect office graphics, press separations, monochrome graphics, and spot colors and apply specific TekColor corrections to each of them. Further, you can define which TekColor Corrections the Phaser 7760 printer will apply to each graphical element on the page – consistently delivering the color output you expect. Each Phaser 7760 includes a built-in library of TekColor Corrections for a wide variety of output devices, including computer displays, other printers and MFP systems, and production-class equipment. The ability to define TekColor Corrections for specific elements on the page ensures the Phaser 7760 will print your RGB, CMYK, and Pantone colors to your specifications.



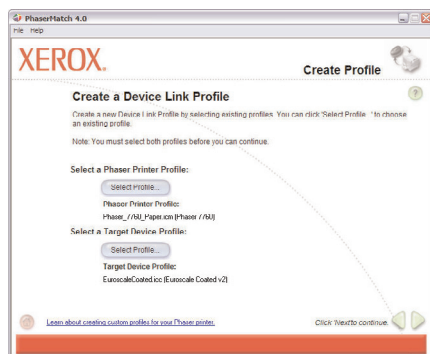
Driver-Based selections and fine tuning of TekColor Corrections

PhaserMatch® 4.0 Color Management and Calibration Software

PhaserMatch 4.0 is the latest version of color management software from Xerox. PhaserMatch 4.0 delivers advanced features to help you manage the color output of the Phaser 7760 and the TekColor Corrections available on the Phaser 7760. The Phaser 7760 comes pre-loaded with many useful TekColor Corrections, but many graphic intensive environments have very specific demands for their color printers.



PhaserMatch allows you to calibrate the color of your Phaser 7760, and create, edit, and download TekColor corrections.



Step-by-step, wizard-based process for creating new TekColor corrections.

PhaserMatch 4.0 delivers you two primary capabilities:

1. Edit existing TekColor Corrections

Using the “Edit Profile” feature, you can edit an existing TekColor Correction and fine-tune the color output and color matching capabilities of your Phaser 7760 color printer. You can then download the edited profile, making it available to all users of the Phaser 7760 printer.

2. Create new TekColor Corrections

Starting with the ICC profiles of the Phaser 7760 printer and your intended target output device, PhaserMatch 4.0 can create a new TekColor Correction for your Phaser 7760. Again, you can download the new TekColor Correction to your Phaser 7760 printer – making it available in the printer driver for all of its users.

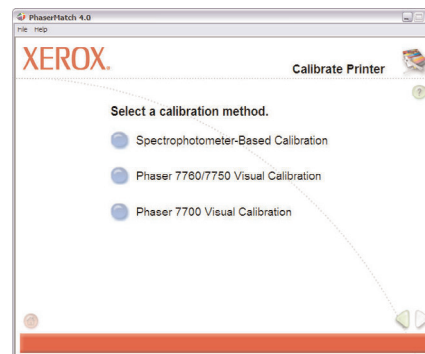
ADVANCED COLOR MANAGEMENT

PhaserCal Calibration Software

PhaserCal is the color calibration application within PhaserMatch 4.0. Color laser printers must be periodically calibrated to eliminate changes in printed colors caused by environmental conditions and normal wear and tear on the printer's consumables. PhaserCal can account for these changes and maintain consistent print output.

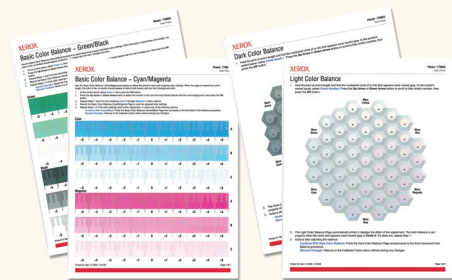
The PhaserCal application communicates with and controls a spectrophotometer that is connected to your computer. In the absence of a spectrophotometer, a data file with measurement information can be imported into PhaserCal. Alternatively, a visual calibration method allows for quick and convenient checks without requiring additional devices.

PhaserCal comes standard on the Phaser 7760DN model. PhaserMatch 4.0, which includes PhaserCal, is standard on the Phaser 7760GX and Phaser 7760DX models – and offered as an option for the Phaser 7760DN.



PhaserCal provides multiple methods for calibrating the color of your Phaser 7760 color printer.

COLOR CALIBRATION METHODS



Visual Calibration Method:

Visual calibration is an easy method of calibrating the colors of your Phaser 7760. From the printer's front panel, select "Printer Setup," "Calibration Setup," and "Calibrate Colors" - step-by-step instructions will guide you through the process. The printer will print pages to help you evaluate its color output, and the front panel will enable you to input values to correct the colors to match your expectations.

Spectrophotometer-Based Calibration:

The PhaserCal software can communicate with a spectrophotometer that is connected to your PC to perform a highly accurate color calibration. The Phaser 7760 will print out the calibration pages that correspond to your spectrophotometer, which are then scanned and processed within PhaserCal - calibrating the color of your printer and delivering the color quality you expect



EVALUATE PRODUCTIVITY

A color printer's overall productivity represents the sum of many of its specific capabilities. Print speed is an obvious specification to compare, but many other factors play an important role in determining whether a printer can support a busy workgroup, deliver the performance you expect and meet the demands of your users. This criteria set will help you evaluate all aspects of a printer's productivity, and show how the Phaser 7760 printer can help you increase the productivity of your employees.

Consider print speed

Since color printing, rather than black-and-white printing, is the primary use for this class of color printer, it makes sense to pay close attention to the color print speed. For larger print jobs and longer print runs, the rated engine speed of the printer will play a large role in how quickly the job is finished.

Calculate print job throughput

Print job throughput is the time it takes from clicking the print button on your computer screen to the final delivery of the document to the output tray – sometimes called “click-to-clunk.” Rated print speed is only a part of the time it takes to print a job – image-processing speed can be even more important to maximizing throughput. Test against jobs typical of your work environment – do you regularly print large, image and color intensive images that place an emphasis on RIP speed? Or, does your business regularly print runs of 25, 50, or hundreds of color documents or presentations?

Measure overall performance

To accurately measure overall printer performance in a real workgroup environment, send a mix of black-and-white and color documents of different length and complexity to the printer over a standard Ethernet network. This combines the network transmission time, first-page-out time, and multi-copy engine speed to paint a clear picture of the actual overall performance of the printer.

Consider multiple users

A color printer must be able to handle a wide variety of documents quickly and reliably. A color printer must keep up with the performance demands of a shared network environment, and be able to process jobs quickly and efficiently to keep from becoming a productivity bottleneck.

Consider media flexibility

Think about the various document types your business could generate in-house, and ensure the printer you are considering can support the type of paper or other media you would like to use to produce that document. Things to keep in mind as you evaluate this area are media size, media weight, whether you'd prefer to use custom-sized media, and how the printer is able to communicate the media it has loaded to users via the print driver.

The Phaser 7760 printer is the latest in a line of highly-performing graphic-arts oriented printers from Xerox. Graphic artists and general office users will be pleased with its print speed and ability to process jobs quickly and efficiently and support a busy, networked environment.



Print Speed

The Phaser 7760 printer, at up to 35 ppm in color and 45 ppm in black-and-white, is one of the fastest color printers designed for use by color professionals and graphics-intensive offices – up to 46% faster than the HP® LaserJet® 9500 printer in color and 88% faster in black-and-white.

Print job throughput

With many years of experience, Xerox has developed one of the most efficient RIPs (Raster Image Processor) in the industry. Combine that with an 800 MHz image processor and the result is an impressive first-page-out time of as few as 9 seconds for color. The resulting productivity means your prints can be finished while competitors are still processing the image.

Overall performance

The Phaser 7760 combines its fast print speed and first-page-out time with a fast Ethernet connection (10/100/1000-BaseTX) and processor and up to 1 GB of memory (512 MB standard) to assure you no workflow bottlenecks at the printer – no matter how busy and complex the mix of print jobs.

Multiple users

The Phaser 7760 is designed for busy workgroup environments – not only does it have the speed and processing power to handle multiple concurrent jobs, it has the media flexibility as well. It can handle the creative requirements of multiple users with an input capacity up to 3,150 sheets from five different trays.

Media flexibility

The Phaser 7760 was designed with the creative color professional in mind. It handles media sizes from as small 3.95 x 5.5 in. (100 x 140 mm) up to banners of 12 x 47.25 in. (320 x 1200 mm), and media weights from 20 lb. Bond to 90 lb. Cover (75 gsm to 255 gsm), to support the vast range of document and collateral types you could produce. Xerox Smart Trays technology helps users avoid guessing, and ensures they are printing their jobs on the correct media due to the printer's ability to display the media that is loaded in each tray via the print driver.

Paper handling is a strength of the Phaser 7760 printer. The paper capacity of the Phaser 7760DN configuration is 650 sheets – 150 sheets of up to 12 x 18 in. paper in the multipurpose tray/Tray 1, and 500 sheets of up to 11 x 17 in. paper in Tray 2, with two options for increasing the input capacity of the printer. Two high-capacity feeder options add either 1,500 sheets of input capacity (comes standard on the Phaser 7760GX) or 2,500 sheets of input capacity (comes standard on the Phaser 7760DX). The 400 sheet output tray capacity is standard on all configurations, and customers have two powerful finishing options to choose from.

EVALUATE NETWORK/IT-CENTRIC FEATURES

Busy IT departments need to have the technology they deploy make their jobs easier – not harder. The printers you install on your networks are no different. Can your printers help you avoid calls to the help desk by not just explaining, but showing your users how to resolve issues? Will your IT staff be given the tools they need to effectively manage printers on your network, and receive the usage information they need to evaluate productivity? Here are some things to think about.

Network installation

How easy is it to set-up and install the printer on your company's network? Does it require a network administrator or I.T. support? If the I.T. department is installing multiple printers, how easy is it for them to automate the process?

Day-to-day operation

Once your printer is connected to the network, what is the end user's experience? If the printer stops working, how easy is it for users to resolve the issue on their own? Can you easily reach the sections of the printer where consumables are replaced, or paper jams are cleared, without having to move the printer? Is it easy to check the status of consumables before committing to a large or important print job?

Network management

How easy is it to learn to use and manage the printer? Consider what tools are provided to help management multiple printers in a network. Does it offer easy control both over the network and from the front panel?

THE XEROX ADVANTAGE

HOW THE PHASER 7760 EXCEEDS THE NETWORK/IT-CENTRIC FEATURES REQUIREMENT:

Integration in the network environment, driver installation on your users' computers, ongoing management by the IT staff, and ease of use for your user population – the Xerox Phaser 7760 printer can exceed your expectations across the board with the renowned Phaser controller, powerful CentreWare® management tools, and unique features to keep your users printing and productive.

Installation

The Phaser 7760 color printer's driver installation process is designed to provide an easy and consistent installation process from all software sources, regardless of platform. Features include:

- Automatic discovery of the printer on your network
- Automatic port creation
- Automatic printer model and feature detection
- Automatic driver installation
- Automatic IP address assignment

Install from the Web technology is used for the distribution of software from any of the following sources:

If using the CD that came with the Phaser 7760, simply insert the CD into your computer, and click the **Install Printer Driver** link to launch the Setup program (other links take users to Manuals and Videos, Technical Support, Register Printer, Color Connection, PowerPoint Design Wizard, and Printer Management tools). Once Setup has been launched, the printer installer will search for printers connected to the computer's USB ports as well as for TCP/IP printers on the local network (if present). If a printer is found on the network, Setup will highlight the printer and give you the option to install this one or a different one. If no printer is found, Setup directs you to go to the printer and choose **Select for Installation** from the front panel menu.

INTELLIGENT READY

All Phaser 7760 printers come with INTELLIGENT READY

Don't turn off the printer. The printer features Intelligent Ready software that tracks when and how the printer is used. Tracking these patterns over a rolling 3-week period, the printer automatically places itself in standby power-saving modes during periods of non-use. The printer will automatically return to its Ready mode just prior to an expected use period – avoiding any warm-up time and minimizing power usage in periods of non-use.

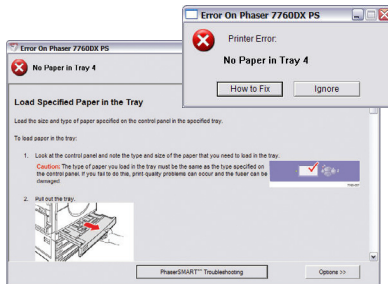
HOW THE PHASER 7760 EXCEEDS THE NETWORK/IT-CENTRIC FEATURES REQUIREMENT (CONTINUED):

By the time you get back to your computer, the installation will be complete. The driver setup also allows for users to select a specific IP address to install to as well as expanding the discovery range to other subnets within your network.

For larger installations, the IT department can simply send an email to end-users with a link to the Install from Web feature. Users simply follow the link to the familiar “next-next-next” installation wizard and they’re ready to print.

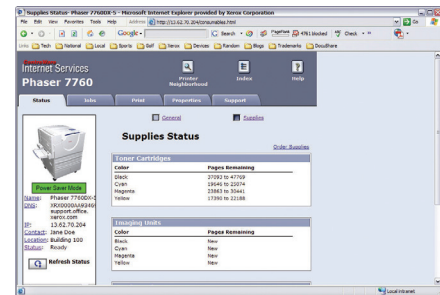
Operation

The large, high-contrast 6 line front panel display is simple and intuitive, and is backlit for easy viewing. A list of help topics is available on the main menu by pressing the ?-button. This brings up a contextual help message to explain whatever menu function or message is being displayed. Front panel job status gives users the status of the current print job, as well as sender information for the job.



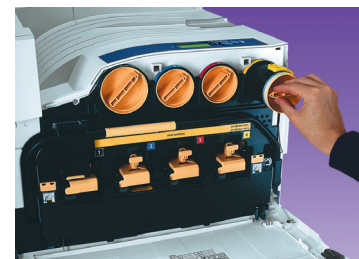
When you send a document to a Xerox network printer, our PrintingScout® technology will alert you if the printer needs attention and provide helpful on-screen text and graphics about how to resolve the issue. This way, you’ll go to the printer completely prepared – avoiding any surprises. No other printer on the market is as automated or comprehensive in the area of printer alerts.

The Phaser 7760 also includes exclusive Xerox PhaserSMART® technology – an automated, Internet-based support tool that is always available to Xerox customers. This tool leverages information from the user’s printer to diagnose and deliver customer self support solutions. Like other Xerox network printers, the Phaser 7760 is covered by a one-year on-site warranty and the Xerox Total Satisfaction Guarantee.



In addition to toner “gas gauges” on the front panel and in the driver interface, the Phaser 7760 can use the MaiLinX feature to automatically send an email to any designated contact (a designated user or an I.T. contact, for instance) when the printer needs supplies or maintenance. That way, the printer is always ready when you are. Further, if one of the color toners needs replacing, the printer can continue to print black-only documents – keeping users as productive as possible.

Access to all consumables, including toner cartridges and imaging units, is accomplished through the front door of the Phaser 7760 – a clean, simple, and easy task. And with toner capacities of up to 25,000 color pages and 32,000 black pages*, you won’t have to replace the toner cartridges very often.



*capacities are approximate, based on 5% coverage on an A-sized page

Network Management

CentreWare® Internet Services

Xerox is the leader in embedded Web server technology – we’ve been including Web servers on our printers longer than any of our competitors. Just pull up the printer’s IP address on your favorite Web browser and easily find all you need to know about it – current status, user manuals, troubleshooting guides, software drivers, hot links to Xerox product information, software updates, and support resources. Network administrators can easily monitor, configure, and troubleshoot the printer right from their desktop – keeping the printer and its users running at full speed.

Within CentreWare Internet Services, you’ll find the following areas:

Status

Administrators can access information on input and output trays, capacities, page count, and consumables information. Also provides an optional link to supplies ordering site.

Jobs

This area gives users and administrators access to Job Accounting records, and allows for management of these records.

Print

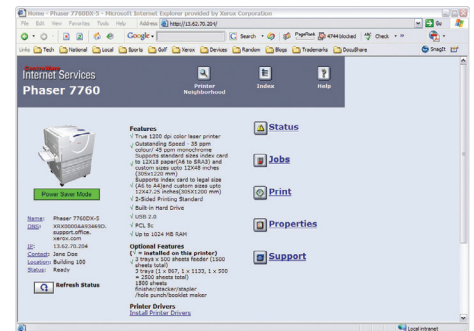
This section allows users to print troubleshooting pages, printer reports, the menu map for the front panel, access personal and saved print jobs, and more.

Properties

Provides a wealth of information on general printer settings, protocols, emulations, tool preferences and security. This area is primarily used to network administrators to configure printers.

Support

Provides links to support tools, software installation, user manuals and videos, Xerox and custom Web-links, and information pages.



CentreWare® Web

CentreWare Web is designed to provide enterprise management solutions for all devices connected to your network – not just printers, not just multifunction systems, and not just those from Xerox. Install, troubleshoot, configure and produce asset reports for all of your connected printers and MFPs. Simply install CentreWare Web on a Microsoft® Windows® 2000 or Windows® NT® 4.0 server and gain access from anywhere on your network through any standard Web browser. The key advantages of CentreWare Web include:

- Conduct installation, configuration and troubleshoot on up to 25 printers simultaneously.
- Install, configure, troubleshoot and generate reports for all products – Xerox as well as others. This is the only tool your I.T. organization will need to manage the output devices on your network.
- When the system administrator enters the tool they will automatically see any printers that are in error state, rather than having to search for them.
- Produce asset reports, error history reports, status report and accounting reports from all of your devices and have them e-mailed to key recipients.
- To save time, intuitive wizards will guide you through infrequently performed tasks such as upgrading printer firmware, cloning device configurations, installing multiple printers and other tasks.

SECTION 3

Configurations, Specifications, Accessories and Supplies, etc.



CONFIGURATION SUMMARY

| FEATURE | 7760DN | 7760GX | 7760DX |
|----------------------------|--|---|----------------------------------|
| Speed | Up to 35 ppm color / 45 ppm black-and-white | | |
| Duty Cycle | Up to 150,000 pages / month | | |
| Paper Handling | | | |
| Paper Input: | | | |
| Tray 1: | up to 150-sheets | up to 150-sheets | up to 150-sheets |
| Tray 2: | up to 500-sheets | up to 500-sheets | up to 500-sheets |
| High Cap. Feeder: | | 1,500-sheet High-Capacity Feeder | 2,500-sheet High-Capacity Feeder |
| Total: | 650 sheets | 2,150 sheets | 3,150 sheets |
| Finishing Options* | Advanced Finisher: 50-sheet multi-position stapling, 3-hole punch, up to 3,500 sheets Professional Finisher: 50-sheet multi-position stapling, 3-hole punch, saddle-stitch booklet making, v-folding, up to 2,000 sheets | | |
| Automatic 2-sided Printing | Standard | | |
| Print | | | |
| First page out time | | | |
| Color: | | 9 seconds | |
| Black: | | 6 seconds | |
| Maximum Resolution | up to 1200 x 1200 dpi | | |
| Processor | 800 MHz | | |
| Language Support | Adobe® PostScript® 3™, PCL® 5c, Adobe PDF-Direct | | |
| Connectivity | Ethernet 10/100/1000 BaseTX, USB 2.0 | | |
| Memory (Std / Max) | 512 MB / 1 GB | | |
| Hard Drive | Standard 40 GB internal hard drive | | |
| Print Features | Custom Size Pages, Booklet Printing, Banner-size Printing, Smart Trays, Proof, Secure, Saved and Personal Print, Personal Saved, Print With, PDF Direct, Extended Font Storage, Job Collation, PrintingScout®, PhaserSMART®, Intelligent Ready | | |
| | PhaserCal® Color Calibration | PhaserCal® plus PhaserMatch® 4.0 Color Management | |
| Accounting | Job Accounting, Usage Analysis Tool | | |
| Warranty | One-year on-site, Xerox Total Satisfaction Guarantee | | |

*7760DN configuration requires 1500-sheet or 2500-sheet High-Capacity Feeder for finishing options

| Consumables | Description | Details/Capacity | Part Number |
|----------------------------------|----------------------------------|--|-------------|
| Toner Cartridges | Black | 32,000 pages | 106R01163 |
| | Cyan | 25,000 pages | 106R01160 |
| | Magenta | 25,000 pages | 106R01161 |
| | Yellow | 25,000 pages | 106R01162 |
| | Staple Pack: Stacker Staples | 15,000 | 008R12941 |
| Booklet Staples | 20,000 | 008R12925 | |
| Routine Maintenance Items | Imaging Unit | Up to 35,000 pages | 108R00713 |
| | Fuser (110V) | Up to 100,000 pages | 115R00049 |
| | Fuser (110V) | Up to 100,000 pages | 115R00050 |
| | Waste Cartridge | Up to 27,000 pages | 108R00575 |
| | Transfer Roller | Up to 100,000 pages | 108R00579 |
| | Belt Cleaner Assembly | | 108R00580 |
| Options & Upgrades | 512 MB Phaser Memory | | 097S03635 |
| | 1,500-sheet High Capacity Feeder | <i>three 500-sheet Universal trays</i> | 097S03628 |
| | 2,500-sheet High Capacity Feeder | <i>one 500-sheet Universal tray, plus two 1,000-sheet A trays</i> | 097S03629 |
| | Advanced Finisher* | <i>3,500 sheets, stacker, stapler, 3-hole punch</i> | 097S03630 |
| | Professional Finisher* | <i>2,000 sheets, stacker, stapler, 3-hole punch, booklet maker</i> | 097S03631 |
| | Printer Cart | | 097S03748 |
| | PhaserMatch 4.0 | | 097S03634 |

*Installation by Xerox recommended.


MEDIA SUPPORTED

| Output Trays | Description | Details/Sizes |
|--------------|---------------------|---------------------------------------|
| Tray 1 (MPT) | Custom Sizes | |
| | Width: | 3.95 to 12 in. (100 mm to 483 mm) |
| | Length: | 5.5 to 47.25 in. (200 mm to 1200 mm) |
| | Statement: | 5.5 x 8.5 in. |
| | Executive: | 7.25 x 10.5 in. |
| | Letter: | 8.5 x 11 in. |
| | US Folio: | 8.5 x 13 in. |
| | Legal: | 8.5 x 14 in. |
| | Tabloid: | 11 x 17 in. |
| | Tabloid Extra: | 12 x 18 in. |
| | A6: | 105 x 148 mm |
| | A5: | 148 x 210 mm |
| | A4: | 210 x 297 mm |
| | A3: | 297 x 420 mm |
| | SRA3: | 320 x 450 mm |
| | B5 ISO: | 176 x 250 mm |
| B5 JIS: | 182 x 257 mm | |
| Tray 2-6 | Custom Sizes | |
| | Width: | 5.5 to 11.7 in. (140 mm to 297 mm) |
| | Length: | 7.15 to 17 in. (200 mm to 432 mm) |
| | Executive: | 7.25 x 10.5 in. |
| | Letter: | 8.5 x 11 in. |
| | US Folio: | 8.5 x 13 in. |
| | Legal: | 8.5 x 14 in. |
| | Tabloid: | 11 x 17 in. |
| | A4: | 210 x 297 mm |
| | A3: | 297 x 420 mm |
| B5 JIS: | 182 x 257 mm | |
| Envelopes | Custom Sizes | All envelope sizes within media range |
| | #10 Commercial: | 4.12 x 9.5 in. |
| | Monarch: | 3.87 x 7.5 |
| | A7: | 5.25 x 7.25 in. |
| | DL: | 110 x 220 mm |
| | C6: | 114 x 162 mm |
| | C5: | 162 x 229 mm |
| | C4: | 229 x 324 mm |
| | B5: | 175 x 250 mm |

PRINT QUALITY MODES

| Tray 1 (MPT) | Description | Maximum Speed |
|-----------------|---|--|
| Standard | 600 x 1200 dpi resolution for bright, vibrant color at full rated speed | Up to 35 ppm color, 45 ppm black and white |
| Enhanced | 1200 x 1200 dpi high quality mode for fine line detail and sharp text | Up to 22 ppm color, 22 ppm black and white |
| Photo | 600 x 600 x 4 dpi for smooth color transitions and accurate flesh tones | Up to 35 ppm color, 35 ppm black and white |

TOTAL SATISFACTION SERVICESSM

| Description | US Part Number | Canadian Part Number | | |
|---------------------------------|---|----------------------|---|---------|
| Extended On-site Service | (available during first 90 days of product ownership) | |  <small>Help Desk Support Program</small> | |
| | 2 years additional (for a total of 3 years) | 7760S3 | | 7760S3C |
| | 3 years additional (for a total of 4 years) | 7760S4 | | 7760S4C |
| Annual On-site Service | 7760SA | 7760SAC | | |

COMPETITIVE COMPARISON

| | XEROX PHASER® 7760 | HP® LASER JET® 9500 | LEXMARK™ C920 | OKI® 9800 | RICOH® AFICIO 7300 |
|--------------------------|--|--|--|--|--|
| Color Performance | | | | | |
| Speed: | | | | | |
| Color | Up to 35 ppm | Up to 24 ppm | Up to 32 ppm | 36 ppm | 35 ppm |
| Black | Up to 45 ppm | Up to 24 ppm | Up to 36 ppm | 40 ppm | 35 ppm |
| First Page Out / Color: | Under 9 seconds | Under 17 seconds | As Fast as 13.5 seconds | 10.5 seconds | 12 seconds |
| Technology: | Laser | Laser | LED | LED | Laser |
| Processor: | 800 MHz | 500 MHz | 1 GHz | 1 GHz | 733 MHz |
| Language Support: | Adobe® PostScript® 3™, PCL®5c emulation, direct PDF | PostScript 3 emulation, HP PCL 6 and HP PCL 5c | PostScript 3 and PCL 6 emulations, direct PDF | Adobe PostScript 3, PCL 5c and PCL 6 emulations | Adobe PostScript 3, PCL 5c and PCL 6 emulations, direct PDF |
| Memory | | | | | |
| Standard: | 512 MB | 160 MB | 256 MB | 1 GB | 256 MB |
| Maximum: | 1 GB | 416 MB | 1 GB | 1 GB | 512 MB |
| Hard Disk: | 40 GB | Optional 20 GB | Optional 20 GB | 20 GB | 40 GB |
| Duty Cycle (up to): | 150,000 per month | 200,000 per month | 200,000 per month | 150,000 per month | 200,000 per month |
| Color Quality | | | | | |
| Resolution: | Up to 1200 x 1200 dpi | Up to 600 dpi with 4800 HP Image REt enhancement | Up to 600 dpi with 2400 software enhancement | Up to 1200 x 1200 dpi, ProQ4800 software enhancement | Up to 1200 x 1200 |
| Color Controls: | PhaserMatch® 4.0 | None | None | EFI® ColorWise™ Pro Tools | None |
| Paper Handling | | | | | |
| Paper Input: | 650 pages standard 3150 pages maximum | 1100 pages standard 3100 pages maximum | 650 pages standard 5300 pages maximum | 760 pages standard 2880 pages maximum | 1100 pages standard 3100 pages maximum |
| Paper Output: | 500 sheets standard 3000 sheet stacker and 500 sheet top tray max. | 600 sheets standard 3000 sheet stacker | 650 pages standard 1650 pages maximum | 600 pages standard 1500 pages maximum | 600 pages standard 3100 pages maximum |
| Two-sided printing: | Standard on all models | Optional: n Standard: hdn | Optional: base, n Standard: dn, dtn | Optional: n Standard: hdn | Optional: base Standard: D, DT1, DT2, DL |
| Media Types: | Plain Paper Glossy Paper Card Stock Transparencies Labels Envelopes | Plain Paper Glossy Paper Card Stock Transparencies Labels Envelopes | Plain Paper Glossy Paper Card Stock Transparencies Labels Envelopes | Plain Paper Glossy Paper Card Stock Transparencies Labels Envelopes | Plain Paper Glossy Paper Card Stock Transparencies Labels Envelopes |
| Media Weights: | 75-225 gsm | 64 – 220 gsm | 75 – 216 gsm | 64 – 270 gsm | 60 – 163 gsm |
| Maximum Paper Size: | 12.6 x 18 in.* (banners up to 12.6 x 47.25 in.) | 12.1 x 18.5 in. | 12 x 18 in. (banners up to 11.7 x 48 in.) | 12 x 18 in. (banners up to 12.9 x 47.24 in.) | 12 x 18 in. (banners up to 12 x 49.6 in.) |
| Toner Capacities | | | | | |
| Color: | 25,000 | 25,000 | 14,000 | 15,000 | 10,000 |
| Black: | 32,000 | 25,000 | 15,000 | 15,000 | 24,000 |
| Network Features | | | | | |
| Network Interfaces: | USB, 10/100/1000-BaseTX Ethernet | Parallel, 10/100-BaseTX Ethernet | USB, 10/100-BaseTX Ethernet, Token Ring External, 802.11b wireless | USB 2.0, Parallel, 10/100-BaseTX Ethernet | USB 2.0, 10/100-BaseTX Ethernet |
| Embedded Web Server | Yes | Yes | Yes | Yes | Yes |
| Other Features | | | | | |
| Warranty: | 1-year on-site | 1-year on-site | 1-year on-site | 1-year on-site | 1-year on-site |

* The maximum paper size may only be manually duplexed.

TEKCOLOR® CORRECTIONS

| Selection | Use For |
|-------------------------------|---|
| Automatic | The default setting provides best results for documents with a mixture of graphics, text and pictures using the best color correction for each element |
| Office Color | <p>Uses a color correction designed for office applications. – a variety of specific options are available in the drop-down list:</p> <ul style="list-style-type: none"> • sRGB Display: Closely approximates the colors on a CRT computer display • sRGB Vivid: Produces brighter, more saturated colors than sRGB Display • sRGB Vivid: Produces the brightest, most saturated colors |
| Press Match | <p>Uses a color correction designed for press operations, professional graphic artists, and photographers - the options are available in the drop-down list include:</p> <ul style="list-style-type: none"> • SWOP Press: Matches the Specification for Web Offset Publications • Euroscale Press: Matches FOGRA glossy paper specification • Commercial Press: Approximates U.S. commercial press target • SNAP Press: Matches Specifications for Newsprint Advertising Production • Japan Color: Matches Japan Color 2001 specification • ISO Coated: Matches FOGRA 27L specification • ISO Uncoated: Matches FOGRA 29L specification |
| Black and White | Selected if you want to produce a black-and-white version of a document. Colors are converted to grayscale. |
| None | Applies no color correction - use with other color management tools such as ICC (International Color Consortium) profiles, ColorSync or the PANTONE® Color Chart for your printer. |
| Use Printer Fron Panel | Uses the color correction set on the printer. The color correction can be set in the printer using the front panel or using CentreWare (if available). |

SPECIFICATIONS - Physical Dimensions

| Dimension | Base Printer | 1,500 Sheet High Capacity Feeder | 2,500 Sheet High Capacity Feeder | Advanced Finisher | Professional Finisher |
|---------------|-------------------|----------------------------------|----------------------------------|-------------------|-----------------------|
| Height | 19.4 in. (493 mm) | 14.3 in. (364 mm) | 14.6 in. (384 mm) | 39 in. (991 mm) | 39 in. (991 mm) |
| Width | 25.4 in. (644 mm) | 22.25 in. (565 mm) | 22.25 in. (565 mm) | 25.4 in. (644 mm) | 25.4 in. (644 mm) |
| Depth | 28.5 in. (724 mm) | 24 in. (607 mm) | 24 in. (607 mm) | 35 in. (889 mm) | 35 in. (889 mm) |
| Weight | 202 lbs. (92 kg) | 66.1 lbs. (30 kg) | 88.2 lbs. (40 kg) | 182.6 lb. (83 kg) | 252.6 lb. (115 kg) |

INFORMATION SOURCES

Front Panel

The front panel offers a suite of tools and information pages to help solve printing problems, media feed and supply issues, and administration problems.

CD Rom

User Documentation

- Reference Guide
- Setup Guide
- Quick Reference Guide
- Instructional Videos

Printer Drivers and Installers (Mac & Windows)

ReadMe Release Notes

Internet Services Help (HTML Documentation)

Disk Generating utility (creates floppy disks of the drivers)

Driver Update utility

Font Manager

Adobe Type Manager (ATM)

On the Web

Visit www.xerox.com/office for:

- Product, supplies, and service information
- Downloading printer drivers
- Finding your local reseller
- On-line documentation

Visit www.xerox.com/office/support for:

- Application issues
- Networking issues
- Printer errors
- Print-quality issues
- Troubleshooting

Visit www.colorconnection.xerox.com for:

- Resource for tools and information to help you get the most from your color printer
- Interactive tutorials and helpful tips for using your printer and favorite software applications
- Easy access to on-line technical support
- Customized features to meet your individual needs

Questions? Comments? Problems?

If you have any questions or issues with your evaluation printer, please contact your Xerox sales representative or the Xerox Office Printing Help Desk at:

U.S. AND CANADA 1-877-362-6567. Or visit us on the web at: www.xerox.com/office

Phaser® 7760



©2008 XEROX CORPORATION. All rights reserved. Contents of this publication may not be reproduced in any form without permission of XEROX CORPORATION. Phaser®, CentreWare®, PhaserMatch®, PrintingScout®, PhaserSMART®, TekColor®, and Xerox®, are registered trademarks of XEROX CORPORATION. Total Satisfaction Services™ is a service mark of XEROX CORPORATION. Adobe® Illustrator®, Photoshop®, InDesign®, PostScript® 3™, and ATM® are registered trademarks Adobe Systems Incorporated or its subsidiaries which may be registered in certain jurisdictions. Apple®, Macintosh®, Mac®, are registered trademarks of Apple Computer Incorporated. PCL® and LaserJet® are registered trademarks of Hewlett-Packard Corporation. Microsoft®, NT® Windows® are registered trademarks of Microsoft Corporation. Novell® and NetWare® are registered trademarks of Novell, Incorporated. Solaris™ is a registered trademark of Sun Microsystems, Incorporated. UNIX® is a registered trademark in the US and other countries, licensed exclusively through X/Open Company Limited. PANTONE® Colors generated may not match PANTONE-identified standards. Consult current PANTONE Publications for accurate color. PANTONE® and other Pantone, Inc trademarks are the property of Pantone, Inc. OKI® is a registered trademark of OKI Data Americas, Inc. Lexmark is a trademark of Lexmark International Inc., Registered in the United States and/or other countries. Ricoh® is a registered trademark of Ricoh Company, Ltd. Other marks are trademarks or registered trademarks of the companies with which they are associated. The information in this booklet is subject to change without notice. 610F724940D 776EG-01UE