

Safeguarding Your Best Interests

GVD Standalone & Mini Enterprise NVRs

- M4008, M4006, M3004 & M2002

The **Standalone** and **Mini-Enterprise** are GVD's turnkey NVRs powered by the preinstalled **HD NVR** to deliver essential to enhanced IP video surveillance. These NVRs are smartly designed to quickly join **CMS** and **VMS**, GVD's large-scale centralized video platforms. The **CMS** (Central Management System) can manage up to 600 channels while the **VMS** (Video Management System) can attend max. 8000 channels.

To get a control center solution, you can scale the NVRs to **VMS**, so the NVRs can team up with the control center to deliver omnipresent protection to your business premises.





Product Highlights

- **Virtual Hard Disk (VHD)**
- Painless system recovery

GVD loads the NVR with a “virtual hard disk” (VHD), which is a Windows-based system image tool to take a snapshot of system status and NVR software settings to recover your system within 5 minutes once a severe system failure or OS/software corruption occurs in the future. This tool can reduce not only RMA but also the need for on-site support. For users, everything just falls back into place so soon.

- **Redundancy**
- Better reliability than most NVRs

The NVR has some hardware components in pairs, including dual LAN ports and dual power units. Dual LAN ports can protect the NVR from losing data connection while dual power units ensure non-stop power supply. The NVR also uses dual watchdogs, in that a hardware watchdog is to monitor system health and a software watchdog is to make sure the important programs run correctly. Also provided is RAID setup to prevent data loss in case of hard disk failure.

- **Bandwidth economy**
- Less demand on network bandwidth

Network bandwidth is the critical consideration when it comes to IP video surveillance system, especially when a large group of cameras is in there. To diminish the impact of limited bandwidth, the NVR adopts a variety of techniques such as **TSE** (Time Sector Engine), **ROI**, **Turbo Mode**, **Adaptive Video Streams**, **Playout Control**, **Live Multicast**, **Sub channels** and so on to maintain video quality and fluent streams.

- **Dual-monitor display**
- Broadens viewing horizons

The NVR extends the video view onto a secondary display. Max. 80 live video can be seen on two screens simultaneously in your workstation. To handle HD video and large video data, the NVR takes advantage of the technique such as **TSE** (Time Sector Engine), **ROI**, **Turbo Mode**, **Adaptive Video Streams**, **Playout Control**, **Live Multicast**, **Subchannels** and so on to boost the display performance, even with limited bandwidth.

- **POS/ATM integration**
- Powerful data retrieval

To video-document cashier payment collection or ATM transaction, **GVD HD NVR Manager** is made to integrate with eight cash registers or ATMs. Powerful data search (by number or by text) and alarm management are also provided to comply with EU standards and to get certification from **Unfallverhütungsvorschrift Kassen (UVV Kassen)**, which is the federal regulation of Germany to protect the cashiers in finance institutions from accidents.

- **Region of Interest**
- Gets the most out of a megapixel cam

The **HD NVR Manager** features **ROI** (Region of Interest), which takes advantage of **ePTZ** for non-mechanic cameras to perform digital PTZ. Use an **ROI** to get the extreme close-up of a small zone from a high-resolution video without losing high sharpness. Besides, **ROIs** can be saved with video patterns to facilitate video viewing.

- **Dual codec & Sub channel**
- Optimize live video views

For a camera capable of sub-streams, **GVD HD NVR Manager** allows multiple video profiles to send a lower-profile sub-stream instead of the higher-profile mainstream over a congested network. The sub-stream can also be recorded and stored in reduced size of storage. The dual codec of cameras is also supported to allow different compressions for live video view, playback and recording.

- **Video patterns**
- The most flexible video display

The **HD NVR Manager** features a collection of video “patterns” to deliver flexible video display. A “pattern” is an onscreen grid with each division in it outputting an individual video, live or recorded, or showing a graphic file such as a floor plan. The featured patterns are provided with various layouts to meet your needs best. Four video playing speeds are given with a pattern to overcome limited network bandwidth and to optimize CPU usage.

Software Functionalities

■ Limited bandwidth solution - Adaptive Video Streams

To ease CPU and network bandwidth from heavy loads, the NVR uses **Adaptive Video Streams** to transmit a low-profile sub-stream instead of the high-profile mainstream when the viewer is small enough to allow good viewing quality. Except for the economy of display, a substream can also be recorded and stored in reduced size of storage.



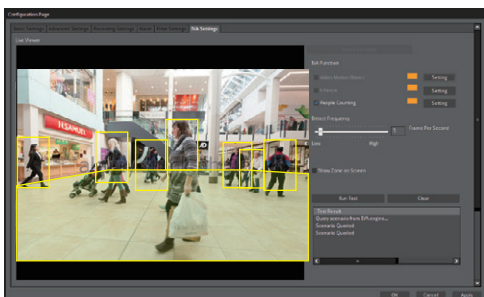
Sub CH 640x480



Main CH 1920 x 1080

■ Reinforced security - Video Content Analysis

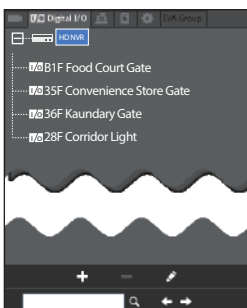
GVD's sophisticated **Video Content Analysis** features **VMD** (Video Motion Detection) that detects moving objects, **E-Fence** that identifies objects crossing a virtual line in one and the opposite direction, and **People Counting** that computes how many people have crossed a virtual line in one and the opposite direction. Users can set up an interested **VCA** event for alarms and retrieve a VCA event with the powerful search feature.



Enabled People Counting

■ Quick integration with 3rd-party systems - POS & ATM solutions

Users need not invest extra engineering effort to quickly integrate the NVR with a 3rd-party system such as points-of-sale, automated teller machines, or an access control system that includes door switches, door alarms and so on. The NVR also features powerful data search and alarm management for POS and ATMs.



A tree of DIO devices imported as shown on the GUI



ACS



POS



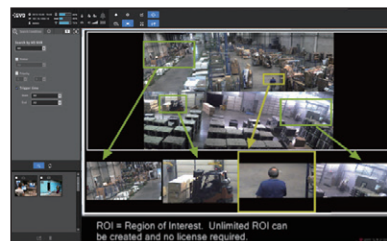
Fire Alarm



ATM

■ Full resolution for megapixel-cameras - ROI & ePTZ

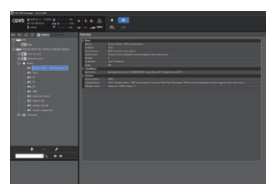
ROI (Region of Interest) takes advantage of **ePTZ** to allow a non-mechanic camera to perform PTZ. By an **ROI**, users can get the extreme close-up of a small zone from a high-resolution video without losing high sharpness. Besides, **ROIs** can be saved with patterns to facilitate video viewing.



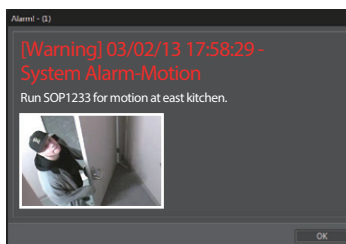
Get the Best of Megapixel Resolution

■ Hardware health monitor with alarm notice - Rule Wizard

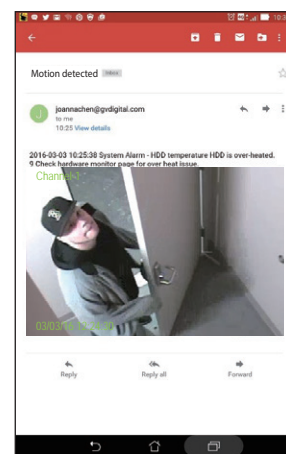
The **Rule Wizard** lets you decide which conditions to form an event and which actions for the NVR to take. A variety of hardware conditions can be set to establish an event, including hard disk temperature, CPU temperature, fan speed and so on. Once an alarm launches, a preset action such as an email notice or a pop-up window will be triggered to call your prompt attention.



A hardware alarm rule enabled



An alarm popup dialog box



An alarm email sent to you on cellphone

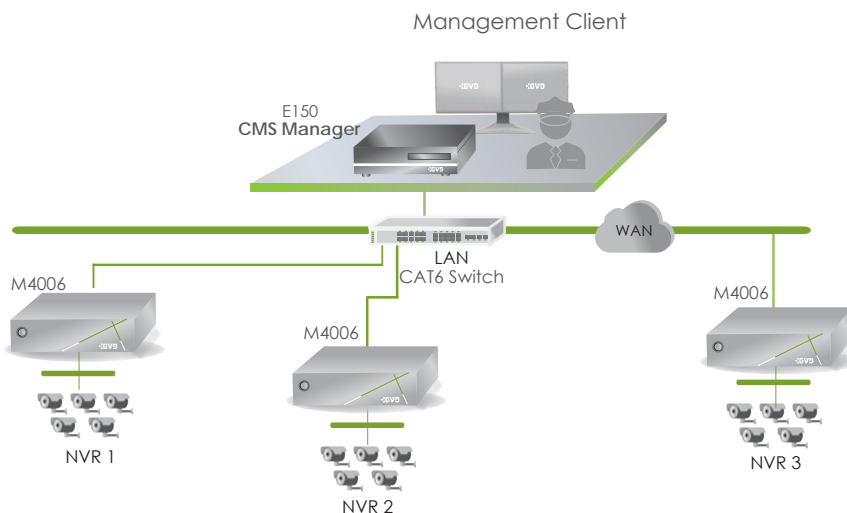
■ No blind spot - Fisheye dewarp & ePTZ

GVD's software dewarp feature can bring the different dewarp features from various camera manufacturers to an established standard of GVD's. So users can easily get the distortion-free video from their fisheye cameras without additional settings. GVD's software dewarp is the total solution to fisheye dewarp.

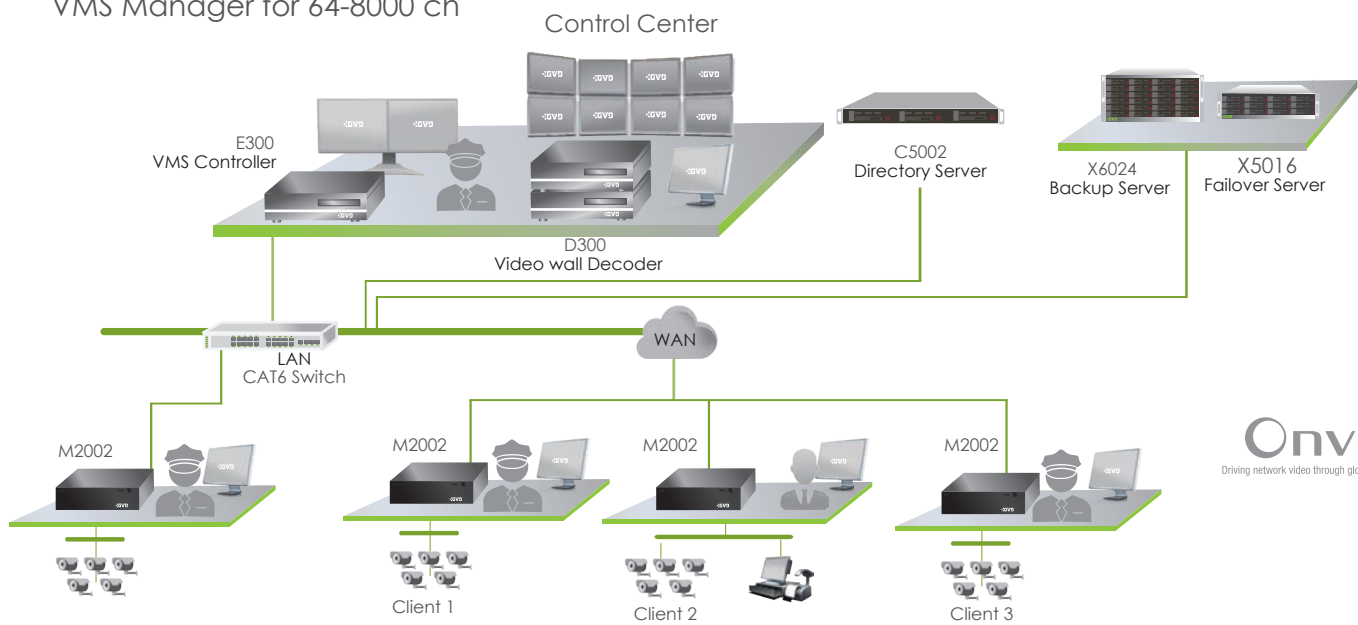


System Architecture

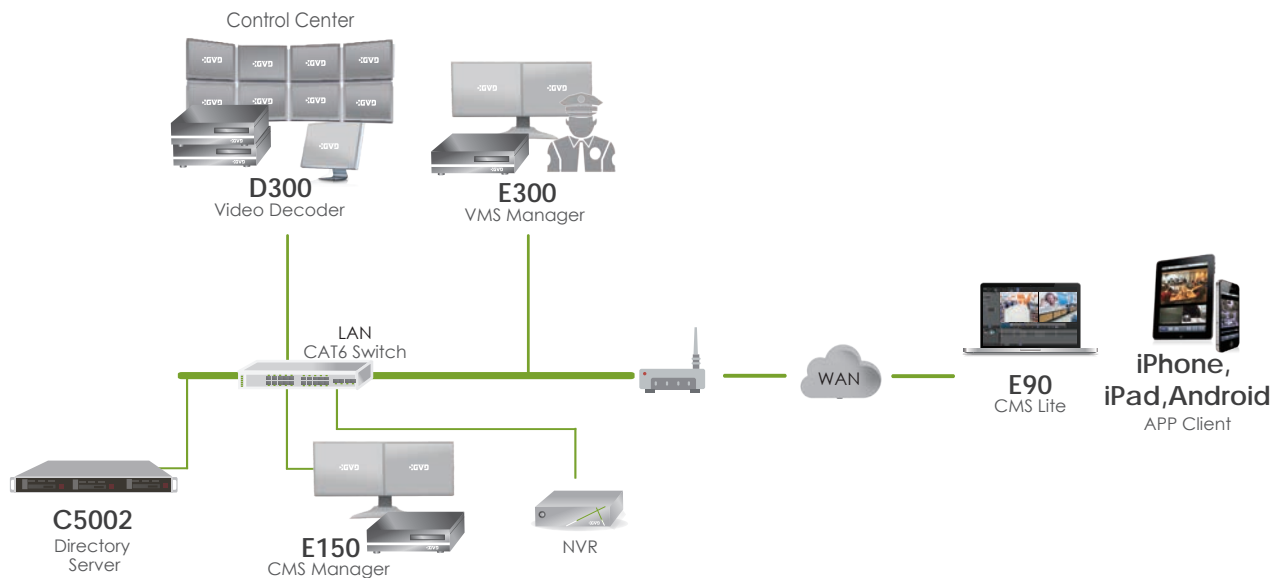
CMS Manager for 48- 600ch



VMS Manager for 64-8000 ch



Remote Client



Specification



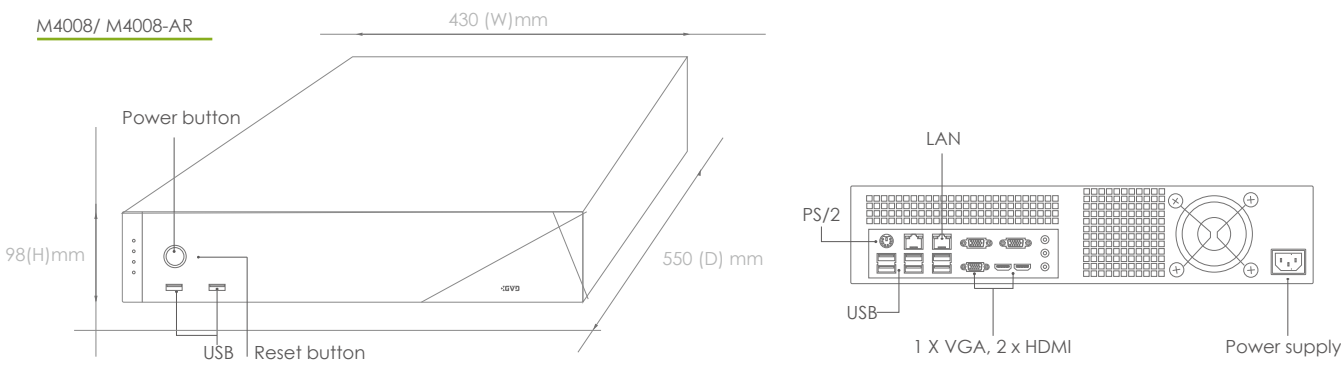
Product		M4008	M4008-AR
System	Name	Mini Enterprise NVR	
	CPU	Intel® Pentium G850 / Intel® Core i5-2400	
	Memory	4G	
	Operating System (OS)	Windows 7 Embedded	
	Watchdog	Hardware watchdog & software watchdog	
Storage	Interface	3.5" SATA HDD	
	Humber of HDD trays/bays	8 pcs	
	Capacity	80TB (10TB x 8)	
	RAID level	NA	RAID 0,1,5,6
Display	Output port	1 x VGA, 1 x HDMI, 1 x DVI-D	
	Resolution	1920 x 1200	
I/O ports	USB port	Front: 2 x USB2.0; Rear: 4 x USB2.0	
	Audio port	Front: 1 x mic-in, 1 x line-out, 1 x line-in	
	Data port	Rear: 1 x RS232	
Network	LAN port	2 x Gigabit LAN (RJ45)	
Power	Voltage	100~240 Vac, 50-60Hz	
	Average consumption	127W~132W	
Mechanic	Form factor	Rackmountable mini enterprise	
	Dimensions (W)x(H)x(D)	430 x 98 x 550 mm	
	Net weight (without HDD)	9.5Kg	9.98Kg
	Operating temperature	10°C ~ 45°C (50°F ~ 113°F)	10°C ~ 35°C (50°F ~ 95°F)
	Storage temperature	-10°C ~ 60°C (14°F ~ 140°F)	
	Operating humidity	0%~90%	
	Storage humidity	5%~95%	
	Chassis	2U rackmount chassis with chassis handles	
	Certification	CE/FCC/VCCI	

Software			
Video recording	IP camera license	24ch, 32ch, 48ch, 64ch	
	Recording rate	Max. 256Mbps	Max. 288Mbps
	Recording resolution	D1, 1.3~20 megapixels	
	Recording mode	Full-time recording, manual recording, recording by schedule, event, alarm, video motion detection	
	Video codec	H.265, H.264, MPEG4, M-JPEG, MxPEG	
	Audio codec	G.711, G.726, ACC	
	Streamin type	Unicast & multicast	
Video display & management	Local display performance	M4008-VS:960fps@D1	M4008-AR-VS:960fps@D1
		M4008-VE:420fps@D1	M4008-AR-VE:420fps@D1
	Max. no. of live video streams	VS:512 / VE: 196	AR-VS:512 /AR-VE:196
	Display pattern	1, 2, 3, 4, 5, 6, 8, 9, 12, 13, 16, 18, 24, 25, 36, 48, 64	
	Live-view operation	ROI, ePTZ, corridor mode, software de-warp, digital zoom in/out, onscreen PTZ	
	ONVIF	ONVIF 2.2, Profile-S	
	Synchronous playback	Up to 16ch	
	Playback controls	Forward/backward playback, pause, jump to next/previous frame, go to date, speed controls, go to some time later/ago (0.5/1/5 minutes)	
	Video export	Via USB (*.AVI & *.AVA supported), digital watermark	
	Video search	By time, alarm, event, missing object, foreign object, E-Fence, people counting, transaction data from POS	
PTZ	Controlling device	Mouse, K205 Keyboard	
	Operation	Direction controls, zoom in/out, preset, patrol	
VCA	Features	E-Fence, video motion detection, people counting, missing/foreign object search	
	Event search	Search for a missing or foreign object; search for an event of people counting, video motion, or E-Fence	
Alarm	Trigger source	Video loss, sensor trigger, HDD crash, system crash, abnormal transaction from POS, E-Fence, video motion detection, people counting	
	Reaction	User-definable text message, video pattern popup, e-mail, output alarm signal, trigger recording, PTZ preset	
	Setup	A Rule Wizard for flexible setup	
Remote access clients	Web client	IE 9.0, 10.0	
	APP client	iOS (iPhone, iPad), Android	
	VMS/CMS & PC thin client	VMS(E300), CMS(E150), CMS Lite(E90-Window 7/8/10)	
	Number of clients	5	
POS	License	8 units	
	Integration	Integrable with all brands via GVD POS filters	
	Transaction (data) view	Pattern-view with both transaction data and relevant videos	
	Data search/retrieval	Search by time, keyword or price to retrieve transaction data with relevant video	
	POS alarm	Alarm setup by item or value; supporting popup alarm, email alarm, text message alarm, etc.	
System	System update	NVR software update	
	Backup & Recovery	Yes, by VHD (virtual hard disk)	
	Event logs	Event logs of system, cameras, users, etc.	
	Languages	20+ languages are supported, including English, Spanish, French, Dutch, Italian, Japanese, Chinese, etc.	

*All specifications are subject to change without notice

Order Information	
Item	Spec
M4008-VE	Intel® Pentium® G850 CPU, 4G DDR RAM, 8 HDDs supported
M4008-VS	Intel® i5 CPU, 4G DDR3 RAM, 8HDDs supported
M4008-AR-VE	Intel® Pentium® G850 CPU, 4G DDR3 RAM, LSI RAID Card, 8 HDDs supported
M4008-AR-VS	Intel® i5 CPU, 4G DDR3 RAM, LSI RAID Card, 8 HDDs supported

Dimensions



Customer Service:

Supprot: support@gvddigital.com / Sales: sales-all@gvddigital.com

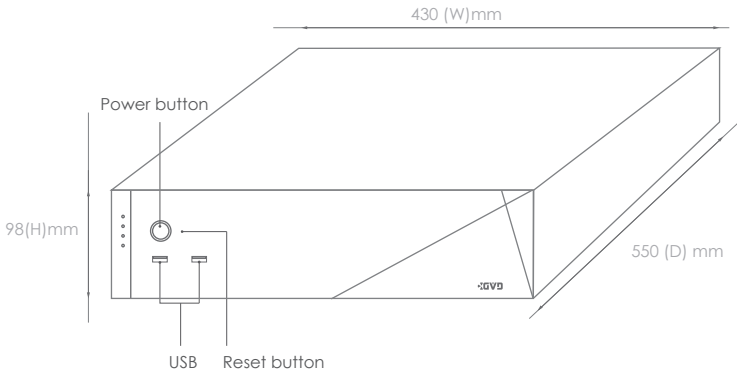
Specification



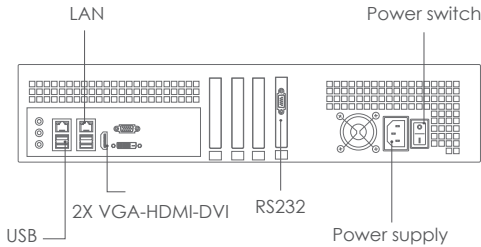
Product		M4006	M4006-AR	M4006-IR
System	Name	Mini Enterprise NVR		
	CPU	Intel® Pentium G850 / Intel® Core i5-2400		Intel® CoreTM i5-2400/
				Intel® CoreTM i7-2600
	Memory	4G		
	Operating System (OS)	Windows 7 Embedded		
	Watchdog	Hardware watchdog & software watchdog		
Storage	Interface	3.5" SATA HDD		
	Humber of HDD trays/bays	6 pcs		
	Capacity	60TB (10TB x 6)		
	RAID level	NA	RAID 0, 1, 5, 6	RAID 0, 1, 5
Display	Output port	1 x VGA, 1 x HDMI, 1 x DVI-D		1 x VGA, 2 x HDMI
	Resolution	1920 x 1200		
I/O ports	USB port	Front: 2 x USB2.0; Rear: 4 x USB2.0		Front: 2 x USB2.0; Rear: 4 x USB2.0 + 2 x USB3.0
	Audio port	Rear: 1 x mic-in, 1 x line-out, 1 x line-in		
	Data port	Rear: 1 x RS232		Rear: 1 x RS232, 1 x RS232/422/485
Network	LAN port	2 x Gigabit LAN (RJ45)		
Power	Voltage	100~240 Vac, 50-60 Hz		
	Average consumption	127~132W		
Mechanic	Form factor	Rackmountable mini enterprise		
	Dimensions(W)x(H)x(D)	430 x 98 x 550 mm		
	Net weight (without HDD)	9.28Kg	9.78Kg	
	Operating temperature	10°C~45°C(50°F~113°F)	10°C~35°C(50°F~95°F)	
	Storage temperature	-10°C~60°C (14°F~140°F)		-20°C~80°C (-4°F~176°F)
	Operating humidity	0%~90%		
	Storage humidity	5%~95%		
	Chassis	2U rackmount chassis with chassis handles		
	Certification	CE/FCC/VCCI		
	Software			
Video recording	IP camera license	16ch, 24ch, 32ch, 48ch		
	Recording rate	Max. 192Mbps	Max. 288Mbps	Max. 192Mbps
	Recording resolution	D1, 1.3~20 megapixels		
	Recording mode	Full-time recording, recording by schedule, event, alarm, motion detection		
	Video codec	H.265, H.264, MPEG4, M-JPEG, MxPEG		
	Audio codec	G.711, G.726, ACC		
	Streamin type	Unicast & multicast		
Video display & management	Local display performance	M4006-VS:1080fps@D1		M4006-IR-VS:1200fps@D1
		M4006-VE:420fps@D1		M4006-IR-VE:1080fps@D1
	Max. no. of live video streams	VS:512 / VE:196	AR-VS:512/ AR-VE:196	IR-VS:512 / IR-VE:512
	Display pattern	1, 2, 3, 4, 5, 6, 8, 9, 12, 13, 16, 18, 24, 25, 36, 48, 64		
	Live-view operation	ROI, ePTZ, corridor mode, software de-warp, digital zoom in/out, onscreen PTZ		
	ONVIF	ONVIF 2.2, Profile-S		
	Synchronous playback	Up to 16ch		
	Playback controls	Forward/backward playback, pause, jump to next/previous frame, go to date, speed controls, go to some time later/ago (0.5/1/5 minutes)		
	Video export	Via USB (*.AVI & *.AVA supported), digital watermark		
	Video search	By time, alarm, event, missing object, foreign object, E-Fence, people counting, POS transaction data		
PTZ	Controlling device	Mouse, K205 keyboard		
	Operation	Direction controls, zoom in/out, preset, patrol		
VCA	Features	E-Fence, video motion detection, people counting, missing/foreign object search		
	Event search	Search for a missing or foreign object; search for an event of people counting, video motion, or E-Fence		
Alarm	Trigger source	Video loss, sensor trigger, HDD crash, system crash, abnormal transaction from POS, E-Fence, video motion detection, people counting		
	Reaction	User-definable text message, video pattern popup, e-mail, output alarm signal, trigger recording, PTZ preset		
	Setup	A Rule Wizard for flexible setup		
Remote access clients	Web client	IE 9.0, 10.0		
	App client	iOS (iPhone, iPad), Android		
	VMS/CMS & PC thin client	VMS(E300), CMS(E150), CMS Lite(E90 - Window XP/7/8)		
	Number of clients	5		
POS	License	8 units		
	Integration	Integrable with all brands via GVD POS filters		
	Transaction (data) view	Pattern-view with both transaction data and relevant videos		
	Data search/retrieval	Search by time, keyword or price to retrieve transaction data with relevant video		
	Alarm	Alarm setup by item or value; supporting popup alarm, email alarm, text message alarm, etc.		
System	System update	NVR software update		
	Backup & Recovery	Yes, by VHD (virtual hard disk)		
	Event logs	Event logs of system, cameras, users, etc.		
	Languages	20+ languages are supported, including English, Spanish, French, Dutch, Italian, Japanese, Chinese, etc.		

*All specifications are subject to change without notice

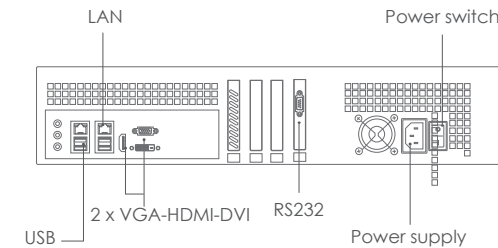
Dimensions



M4006



M4006-AR



Customer service:

Supprot: support@gvdigital.com / Sales: sales-all@gvdigital.com

Specification



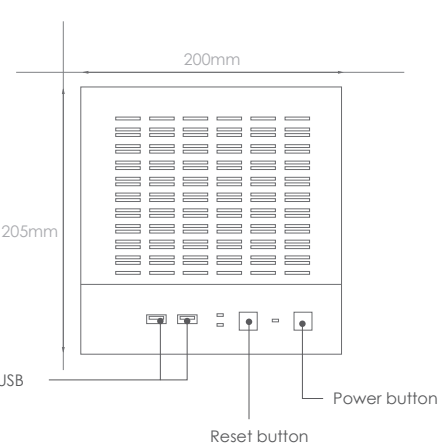
Product		M3004-VE	M3004-VS
System	Name	Standalone NVR	
	CPU	Intel® Celeron® G1820	Intel® Core™ i3-3220
	Memory	4G	
	Operating System (OS)	Windows 7 Embedded	
	Watchdog	Hardware watchdog & software watchdog	
Storage	Interface	3.5" SATA HDD	
	Number of HDD trays/bays	4 pcs	
	Capacity	40TB (10TBx4)	
	RAID level	NA	
Display	Output port	1 x VGA, 1 x HDMI, 1 x DisplayPort	1 x VGA, 2 x HDMI,
	Resolution	1920 x 1200	
I/O ports	USB port	Front: 2 x USB2.0; Rear: 2 x USB2.0 + 2 x USB3.0	Front: 2 x USB2.0; Rear: 4 x USB2.0
	Audio port	Rear: 1 x mic-in, 1 x line-out, 1 x line-in	Rear: 1 x mic-in, 1 x line-out, 1 x line-in
	Data port	2 x RS232	
Network	LAN port	2 x Gigabit LAN (RJ45)	
	Voltage	100~240 Vac, 50-60 Hz	
	Average consumption	115W	120W
Power	Form factor	Tower standdalone	
	Dimensions(W)x(H)x(D)	200 x 205 x 320 mm	
Mechanic	Net weight (without HDD)	5.86 Kg	
	Operating temperature	0°C~40°C (32°F~104°F)	
	Storage temperature	-10°C~60°C (14°F~140°F)	
	Operating humidity	0%~90%	
	Storage humidity	5%~95%	
	Chassis	SECC, Front panel: ABS	
	Certification	CE/FCC/VCCI	

Software			
Video recording	IP camera license	16ch, 24ch, 32ch	
	Recording rate	Max. 128Mbps	
	Recording resolution	D1, 1.3~20 megapixels	
	Recording mode	Full-time recording, recording by schedule, event, alarm, motion detection	
	Video codec	H.265, H.264, MPEG4, M-JPEG, MxPEG	
	Audio codec	G.711, G.726, ACC	
	Streamin Type	Unicast & multicast	
Video display & management	Local display performance	300fps@D1	600fps@D1
	Max. no. of live video streams	64	64
	Display pattern	1, 2, 3, 4, 5, 6, 8, 9, 12, 13, 16, 18, 24, 25, 36, 48, 64	
	Live-view operation	ROI, ePTZ, corridor mode, software de-warp, digital zoom in/out, onscreen PTZ	
	ONVIF	ONVIF 2.2, Profile-S	
	Synchronous playback	Up to 16ch	
	Playback controls	Forward/backward playback, pause, jump to next/previous frame, go to date, speed controls, go to some time later/ago (0.5/1/5 minutes)	
	Video export	Via USB (*.AVI & *.AVA supported), digital watermark	
	Video search	By time, alarm, event, missing object, foreign object, E-Fence, people counting, transaction data from POS	
PTZ	Controlling device	Mouse, K205 keyboard	
	Operation	Direction controls, zoom in/out, preset, patrol	
VCA	Features	E-Fence, video motion detection, people counting, missing/foreign object search	
	Event search	Search for a missing or foreign object; search for an event of people counting, video motion, or E-Fence	
Alarm	Trigger source	Video loss, sensor trigger, HDD crash, system crash, abnormal transaction from POS, E-Fence, video motion detection, people counting	
	Reaction	User-definable text message, video pattern popup, e-mail, output alarm signal, trigger recording, PTZ preset	
	Setup	A Rule Wizard for flexible setup	
Remote access clients	Web client	IE 9.0	
	APP client	iOS (iPhone, iPad), Android	
	VMS/CMS & PC thin client	VMS(E300), CMS(E150), CMS Lite (E90 - Window XP/7/8)	
	Number of clients	5	
System	System update	NVR software update	
	Backup & recovery	Yes, by VHD (virtual hard disk)	
	Event logs	Event logs of system, cameras, users, etc.	
	Languages	20+ languages are supported, including English, Spanish, French, Dutch, Italian, Japanese, Chinese, etc.	

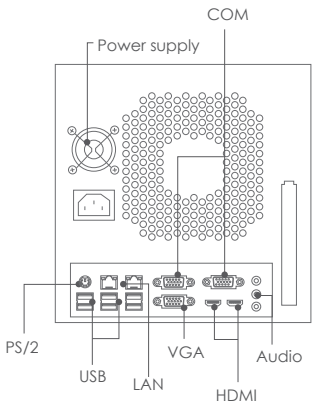
*All specifications are subject to change without notice.

Order Information	
Item	Spec
M3004-VE	Intel® Celeron® J1900 CPU, 4G RAM, 4 HDDs supported
M3004-VS	Intel® i3 - 3220 CPU, 4G RAM, 4 HDDs supported

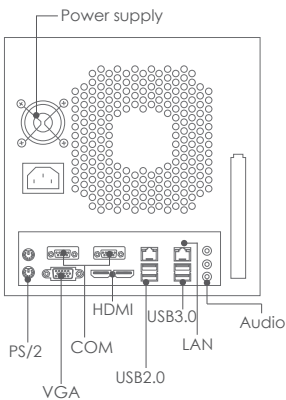
Dimensions



M3004-VS



M3004-VE



Customer Service:

Support: support@gvdigital.com / Sales: sales-all@gvdigital.com

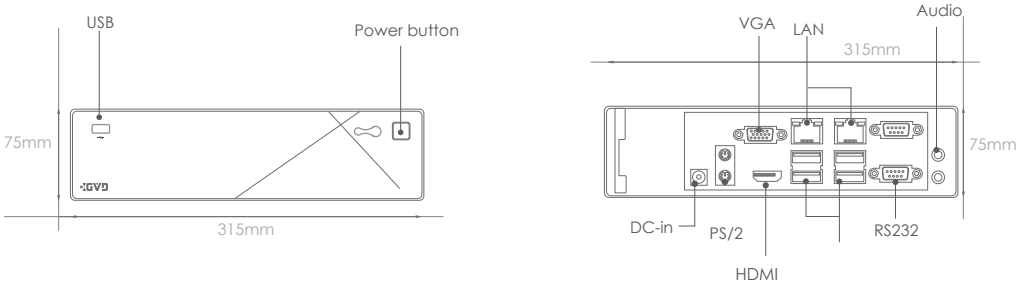
Specification



Product			M2002
System	Name	Standalone NVR	
	CPU	Intel® Celeron® J1900	
	Memory	4G	
	Operating System (OS)	Windows 7 Embedded	
	Watchdog	Hardware watchdog & software watchdog	
Storage	Interface	3.5" SATA HDD	
	Humber of HDD trays/bays	2 pcs	
	Capacity	20TB (10TBx2)	
	RAID level	NA	
Display	Output port	1 x VGA, 1 x HDMI	
	Resolution	1920 x 1200	
I/O ports	USB port	Front: 1 x USB2.0; Rear: 4 x USB2.0	
	Audio port	Front: 1 x mic-in, 1 x line-out, 1 x line-in	
	Data port	1 x RS232 (header) - onboard I/O	
Network	LAN port	2 x Gigabit LAN (RJ45)	
	Voltage	100~240 Vac, 50-60Hz	
	Average consumption	30W	
Power	Form factor	Standalone	
	Dimensions(W)x(H)x(D)	315 x 200 x 75mm	
	Net weight (without HDD)	2.89 Kg	
Mechanic	Operating temperature	0°C ~ 40°C (32°F ~ 104°F)	
	Storage temperature	-10°C ~ 60°C (14°F ~ 140°F)	
	Operating humidity	0%~90%	
	Storage humidity	5%~95%	
	Chassis	NA	
	Certification	CE/FCC/VCCI	
Software			
Video recording	IP camera license	4ch, 6ch, 8ch, 12ch, 16ch	
	Recording rate	Max. 64Mbps	
	Recording resolution	D1, 1.3~20 megapixels	
	Recording mode	Full-time recording, manual recording, recording by schedule, event, alarm, video motion detection	
	Video codec	H.265, H.264, MPEG4, M-JPEG, MxPEG	
	Audio codec	G.711, G.726, ACC	
	Streamin type	Unicast & multicast	
Video display & management	Local display performance	330fps@D1	
	Max. no. of live video streams	64	
	Display pattern	1, 2, 3, 4, 5, 6, 8, 9, 12, 13, 16, 18, 24, 25, 36, 48, 64	
	Live-view operation	ROI, ePTZ, corridor mode, software de-warp, digital zoom in/out, onscreen PTZ	
	ONVIF	ONVIF 2.2, Profile-S	
	Synchronous playback	Up to 16ch	
	Playback controls	Forward/backward playback, pause, jump to next/previous frame, go to date, speed controls, go to some time later/ago (0.5/1/5 minutes)	
	Video export	Via USB (*.AVI and *.AVA supported), digital watermark	
	Video search	By time, alarm, event, missing object, foreign object, E-Fence, people counting	
PTZ	Controlling device	Mouse, K205 keyboard	
	Operation	Direction controls, zoom in/out, preset, patrol	
VCA	Features	E-Fence, video motion detection, people counting, missing/foreign object search	
	Event search	Search for a missing or foreign object; search for an event of people counting, video motion, or E-Fence	
Alarm	Trigger source	Video loss, sensor trigger, HDD crash, system crash, abnormal transaction from POS, E-Fence, video motion detection, people counting	
	Reaction	User-definable text message, video pattern popup, e-mail, output alarm signal, trigger recording, PTZ preset	
	Setup	A Rule Wizard for flexible setup	
Remote access clients	Web client	IE 9.0, 10.0	
	APP client	iOS (iPhone, iPad), Android	
	VMS/CMS & PC thin client	VMS(E300), CMS(E150), CMS Lite(E90-Window 7/8/10)	
	Number of clients	5	
System	System update	NVR software update	
	Backup & Recovery	Yes, via VHD (virtual hard disk)	
	Event logs	Event logs of system, cameras, users, etc.	
	Languages	20+ languages are supported including English, Spanish, French, Dutch, Italian, Japanese, Chinese, etc.	

*All specifications are subject to change without notice

Dimensions



Customer Services:

Supprot: support@gvddigital.com / Sales: sales-all@gvddigital.com

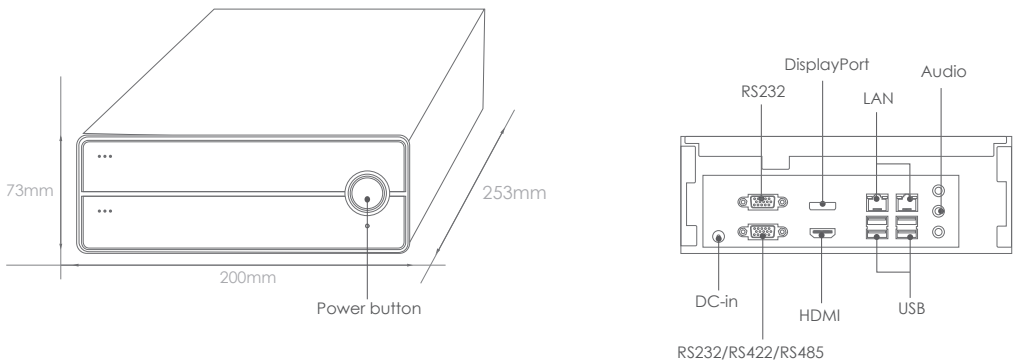
Specification



Product		M95
System	Name	Standalone NVR
	CPU	Intel® Celeron® G1840
	Memory	4G
	Operating System (OS)	Windows 7 Embedded
	Watchdog	Hardware watchdog & software watchdog
Storage	Interface	3.5" or 2.5" SATA HDD
	Humber of HDD trays/bays	1 x 3.5" or 2 x 2.5"
	Capacity	10TB (1 x 3.5" HDD) or 4TB (2 x 2.5" HDD)
	RAID level	NA
Display	Output port	1 x HDMI, 1 x DisplayPort
	Resolution	1920 x 1200
I/O ports	USB port	Front: 2 x USB2.0 + 2 x USB3.0; Rear: 4 x USB2.0
	Audio port	Front: 1 x mic-in, 1 x line-out, 1 x line-in
	Data port	1 x RS232 (header) - onboard I/O
Network	LAN port	2 x Gigabit LAN (RJ45)
Power	Voltage	100~240 Vac, 50-60Hz
	Average consumption	40W
Mechanic	Form factor	Standalone NVR
	Dimensions(W)x(H)x(D)	200 x 72 x 240 mm
	Net weight (without HDD)	1.86Kg
	Operating temperature	0°C ~ 40°C (32°F ~ 104°F)
	Storage temperature	-10°C ~ 60°C (14°F ~ 140°F)
	Operating humidity	0%~90%
	Storage humidity	5%~95%
	Chassis	NA
	Certification	CE/FCC/VCCI
Software		
Video recording	IP camera license	4ch, 8ch, 12ch
	Recording rate	32Mbps/M95-M-V, 64Mbps/M95-V
	Recording resolution	D1, 1.3~20 megapixels
	Recording mode	Full-time recording, recording by schedule, event, alarm, motion detection
	Video codec	H.265, H.264, MPEG4, M-JPEG, MxPEG
	Audio codec	G.711, G.726, ACC
	Streamin type	Unicast & multicast
Video display & management	Local display performance	360fps@D1
	Max. no. of live video streams	64
	Display pattern	1, 2, 3, 4, 5, 6, 8, 9, 12, 13, 16, 18, 24, 25, 36, 48, 64
	Live-view operation	ROI, ePTZ, corridor mode, software de-warp, digital zoom in/out, onscreen PTZ
	ONVIF	ONVIF 2.3, Profile-S
	Synchronous playback	Up to 16ch
	Playback controls	Forward/backward playback, pause, jump to next/previous frame, go to date, speed controls, go to some time later/ago (0.5/1/5 minutes)
	Video export	Via USB (*.AVI & *.AVA supported), digital watermark
	Video search	By time, alarm, event, missing object, foreign object, E-Fence, people counting
PTZ	Controlling device	Mouse, K205 keyboard
	Operation	Direction controls, zoom in/out, preset, patrol
VCA	Features	E-Fence, video motion detection, people counting, missing/foreign object search
	Event search	Search for a missing or foreign object; search for an event of people counting, video motion, or E-Fence
Alarm	Trigger source	Video loss, sensor trigger, HDD crash, system crash, abnormal transaction from POS, E-Fence, video motion detection, people counting
	Reaction	User-definable text message, video pattern popup, e-mail, output alarm signal, trigger recording, PTZ preset
	Setup	A Rule Wizard for flexible setup
Remote access clients	Web client	IE 9.0, 10.0
	APP client	iOS (iPhone, iPad), Android
	VMS/CMS & PC thin client	VMS(E300), CMS(E150), CMS Lite(E90-Window 7/8/10)
	Number of clients	5
System	System update	NVR software update
	Backup & Recovery	Yes, by VHD (virtual hard disk)
	Event logs	Event logs of system, cameras, users, etc.
	Languages	20+ languages are supported, including English, Spanish, French, Dutch, Italian, Japanese, Chinese, etc.

*All specifications are subject to change without notice

Dimensions



Customer Service:

Supprot: support@gvddigital.com / Sales: sales-all@gvddigital.com