

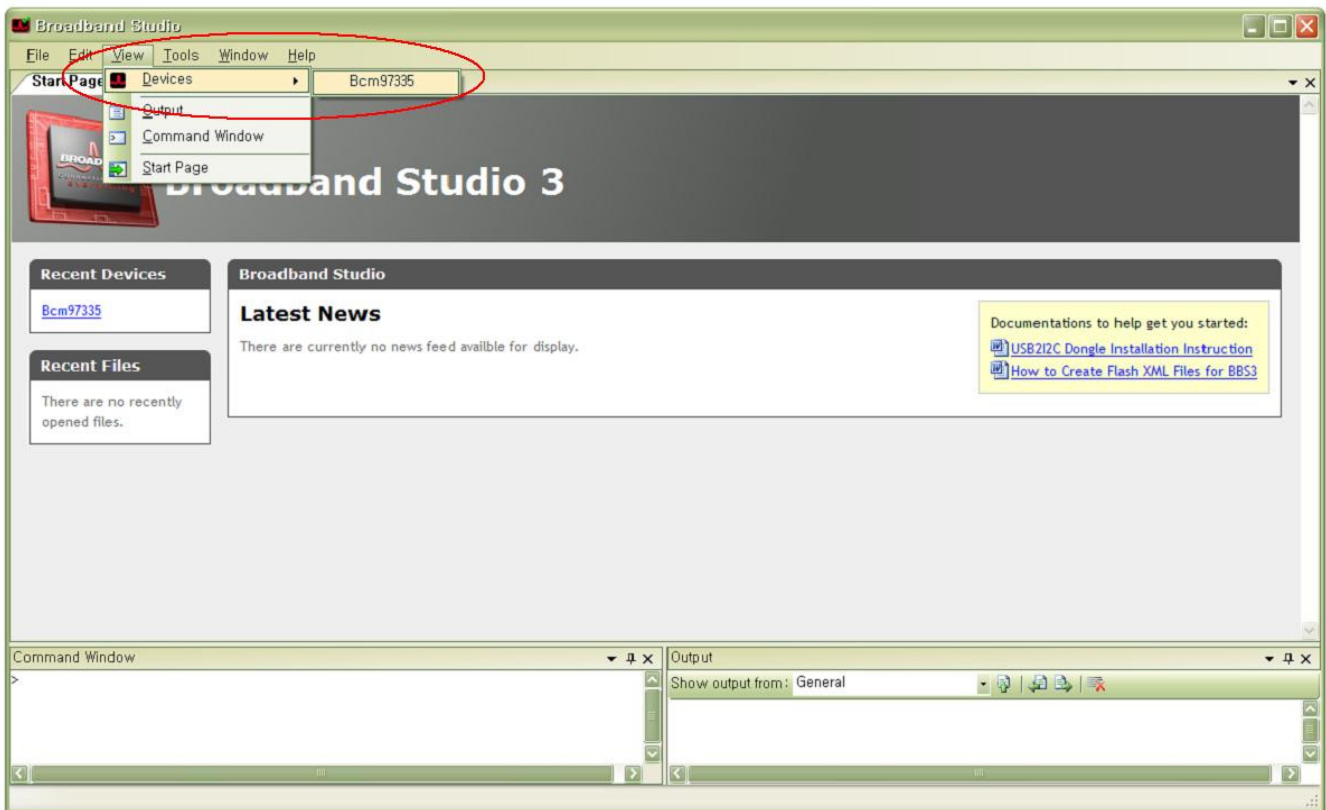
<How to install>

After extracting the compressed file that is installed in the follow order.

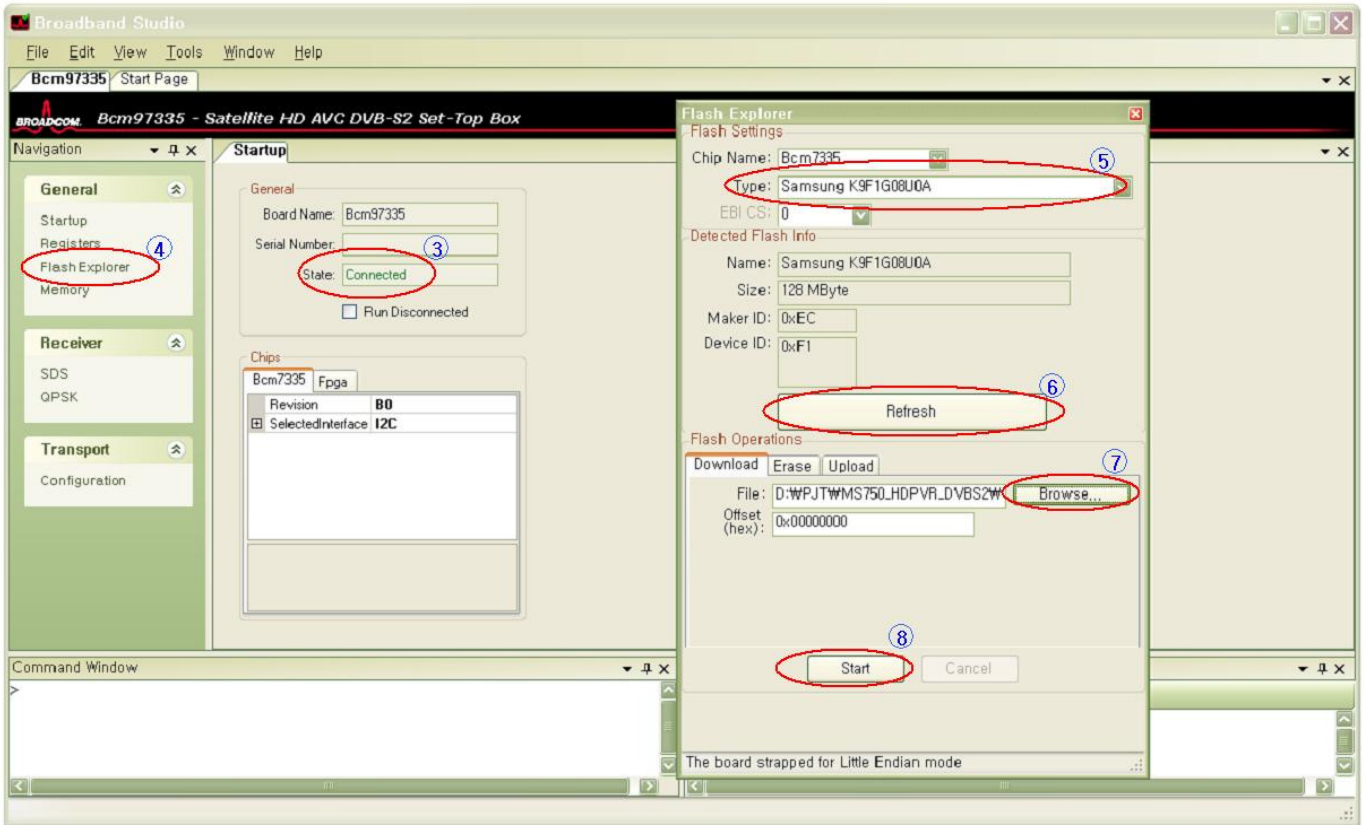
1. WBBS_Install\WBroadband Studio 3\Broadbandstudio3 install.
2. WBBS_Install\WBCM97325\Bcm97325 install. (Do not use setup) => Vu+ SOLO
WBBS_Install\WBCM97335\Bcm97335 install. (Do not use setup) => Vu+ DUO
WBBS_Install\WBCM97413\Bcm97413 install. (Do not use setup) => Vu+ UNO
WBBS_Install\WBCM97413\Bcm97413 install. (Do not use setup) => Vu+ ULTIMO
3. WBBS_Install\WBcmUSB\BcmUSB => Use USB driver update.

<How to run>

1. Broadband Studio 3 runs
2. Select Menu => View => devices => Bcm7325 (Vu+ SOLO)
Select Menu => View => devices => Bcm7335 (Vu+ DUO)
Select Menu => View => devices => Bcm7413 (Vu+ UNO)
Select Menu => View => devices => Bcm7413 (Vu+ ULTIMO)



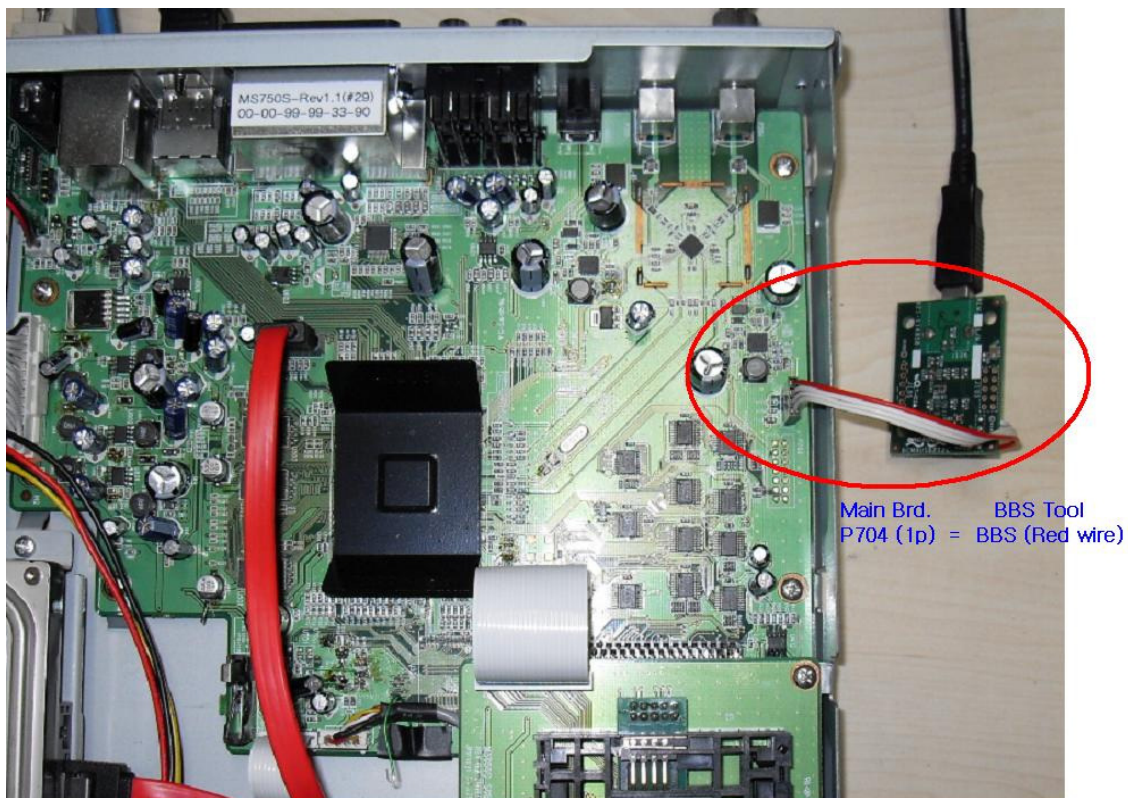
3. After turning on the STB, you can see the message 'Connected'
4. Select Flash Explorer
5. Select the Type 'K9F1G08U0A'
6. Select refresh
7. Select the update file in Browser
8. Select Start



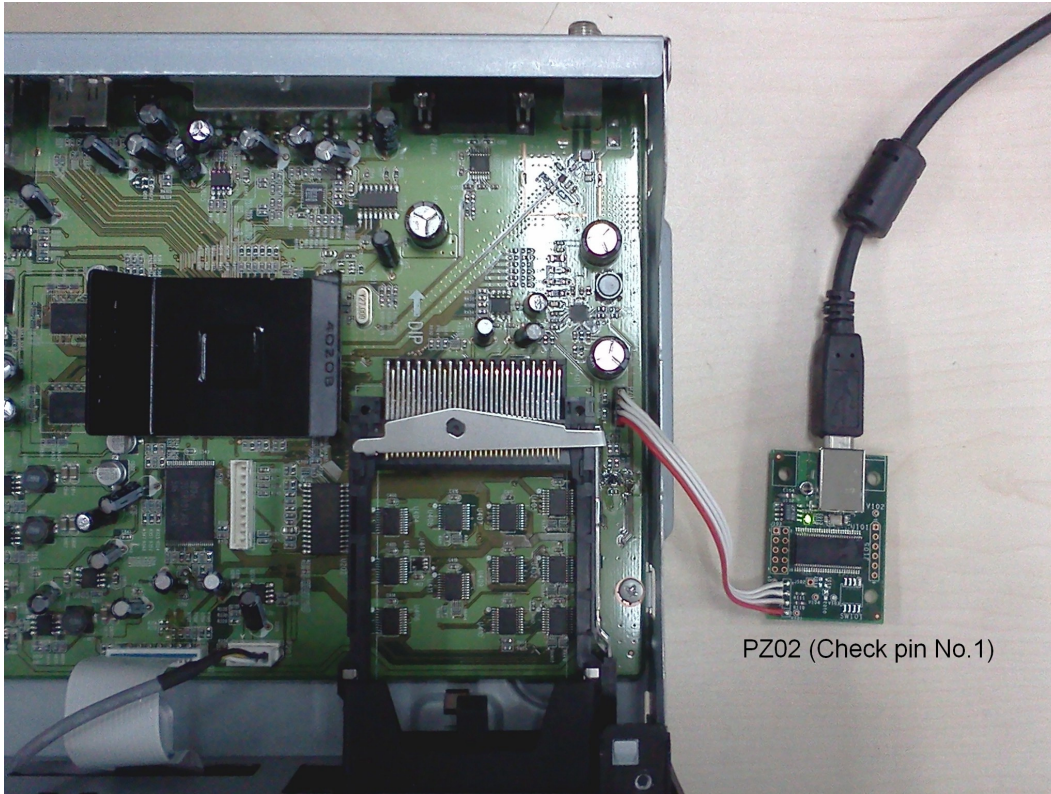
<How to connect BBS>

Connect the BBS as shown below

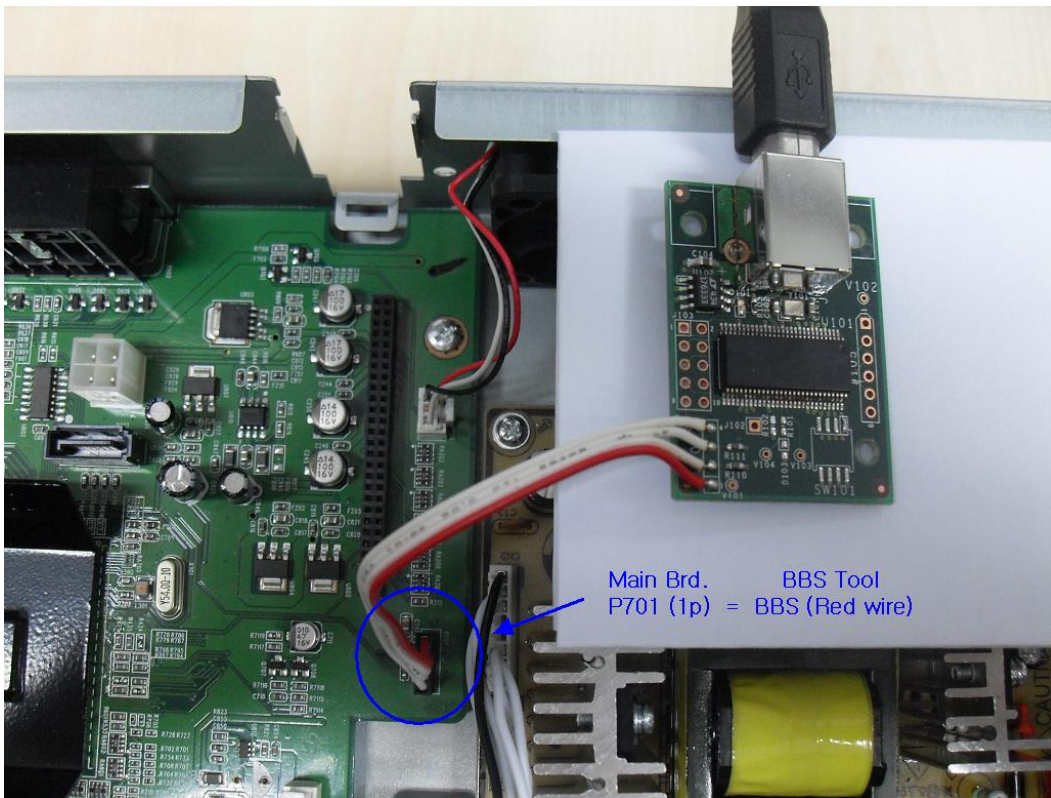
1. Vu+ DUO



2. Vu+ SOLO



3. Vu+ UNO



4. Vu+ ULTIMO

