



altro

the future is safer with altro

# safety floor and wall systems

product brochure

the future is safer with altro

90  
years of  
innovation



the future is safer with

# Table of Contents

## Safety Sheet - Maxis Cleaning Technology Collection

*Formulated with advanced Maxis Cleaning Technology, products in this Maxis Collection feature the highest levels of stain resistance and cleanability and are well suited for the most demanding areas.*

- 3** **Maxis** - Next generation safety floor for areas where underfoot safety is critical.
- 4** **Suprema** - High design safety floor, offers superior safety and hygienic benefits.
- 5** **Timbersafe II** - Wood-look safety flooring that provides both slip and stain resistance.

## Safety Sheet - Essential Collection

*Essential Safety Collection is Altro's core group of safety flooring products. All floors in this collection offer high levels of slip resistance and hygiene.*

- 7** **Walkway 20** - Attractive safety floor that features static dissipative versions for select colors.
- 8** **Impressionist II** - Decorative, yet practical patterned safety floor for high traffic areas.
- 9** **Marine 20** - Specially designed for barefoot safety in wet areas.
- 10** **Designer 25** - Heavy-duty flooring designed for busy areas such as kitchens and supermarkets.
- 11** **Stronghold 30** - Flooring designed for wet and greasy areas.
- 12** **Atlas 40** - Specialty industrial flooring.
- 13** **ContraX** - Economical commercial safety sheet designed for light traffic, multipurpose areas.
- 14** **Cordiale** - PVC-Free flooring for corridors and hallways.

## Commercial Smooth Flooring Collection

*Available in either tiles or sheets, these smooth floor products are extremely durable and well suited for high traffic areas such as corridors, entranceways and lobbies.*

- 16** **Ethos** - A wood-look versatile, high-quality smooth vinyl floor.
- 17** **Chrysalis** - Flexible, homogeneous, multipurpose, smooth flooring.
- 18** **Dolce** - Enhanced vinyl tile, joins the natural beauty of stone with through pattern construction.
- 19** **CS Line** - PVC-Free flooring derived from minerals and thermoplastic polymers.
- 21** **Quartz Tile** - High-performance, smooth flooring solution for the most demanding areas.
- 23** **Melodico** - Decorative, commercial grade, inlaid sheet vinyl flooring.

## Whiterock Wall Systems

*A durable, water-tight, seamless smooth wall panel system designed for building environments that are required to meet strict hygienic standards.*

- 25** **Altro Whiterock** - A durable, water-tight, seamless smooth wall system.
- 26** **Altro Whiterock Chameleon** - An economical designer wall option for front of house.

## Charts And Diagrams

*Important charts and diagrams regarding the technical use and sustainability information of Altro's hygienic floor and wall systems.*

- 27** **Technical Information**
- 29** **Sustainability and LEED® Score Card**
- 31** **Product Application Chart**

altro

# Safety Floor & Wall Systems

Altro, the world leader in safety flooring, is dedicated to providing the best of both design and functional performance. We create safe, hygienic environments that are easy to clean and maintain. "The future is safer with Altro", is a philosophy that guides us; it is at the core of everything we do.

With over 80 years of experience, Altro is leading the frontier of next generation safety flooring with unique designs, innovative technologies, and state-of-the-art sustainable facilities. Altro is the first and only manufacturer with an in-house safety floor recycling system.

Altro safety flooring and Altro Whiterock integrate to form an encapsulated system with welded seams on both the floors and walls. With no gaps, cracks or bacteria-harboring accessories, there is nowhere for bacteria and moisture to build up.

The system also has an integral bacteriostat that inhibits the growth of harmful bacteria and microorganisms, including MRSA.

Altro's floor and wall system is extremely durable and impact resistant and requires very little maintenance.

**creating safe, hygienic environments**  
a total solution



# Maxis Cleaning Technology Collection



Products made with Altro Maxis Cleaning Technology deliver superior cleanability, stain resistance, and color retention for the life of the floor.



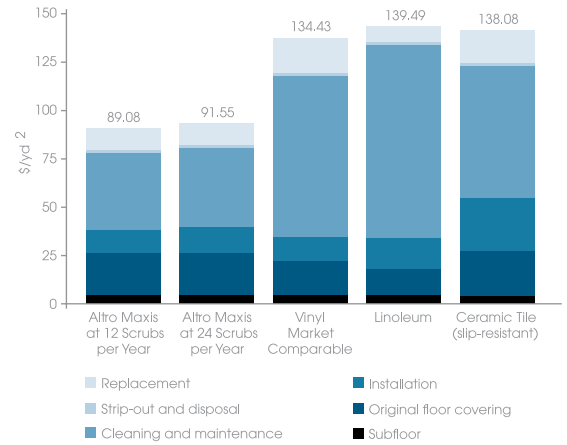
Altro products with Altro Easyclean Technology have time-after-time outperformed competitors in stain resistance and color retention.



AltroSan is an integral bacteriostat, that helps inhibit the growth of bacteria and microorganisms. Tests by an independent laboratory have also shown that Altro safety flooring inhibits the growth of MRSA.

This chart demonstrates life cycle cost relationships between Altro safety flooring, the market comparable, and alternative flooring materials.

**30 Year Altro Maxis Flooring Analysis – Discounted at 6%**



**highest level of stain resistance**  
**proven cleanability and color retention**



# Maxis

## Stain Resistant Safety Flooring

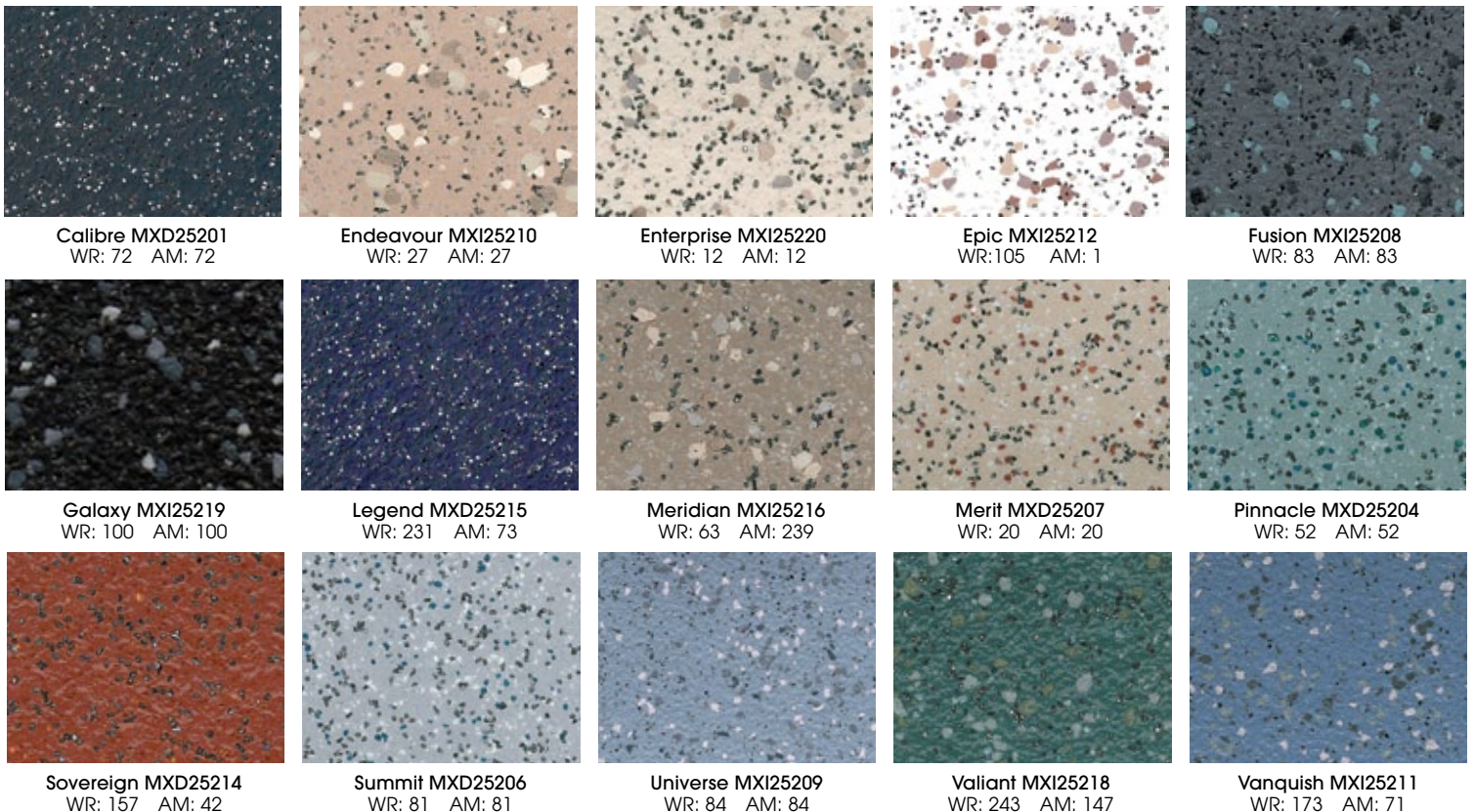
### Maxis Cleaning Technology Collection



**Altro Maxis™** is specifically designed for areas where an attractive appearance, durability, and underfoot safety are equally critical. Maxis Cleaning Technology has superior cleanability and color retention, and is the ideal choice for high-traffic areas such as public circulation areas, school corridors, hospitals, operating rooms, classrooms, and veterinary clinics.

- Altro Maxis Cleaning Technology - *reduces cleaning and maintenance*
- AltroSan Integrated Bacteriostat - *inhibits growth of microorganisms and MRSA*
- Superior Slip Resistance
- Low VOC Emissions for Improved Air Quality
- May Contribute to or Comply with LEED™ Credits
- Contains 10% Post-Consumer Recycled Content
- Does not contain DEHP or Phthalates

**Thickness:** 0.10" (2.5mm)  
**Roll Length:** 66' (20m)  
**Width:** 6'7" (2m)  
**Weight:** 5.7lbs/yd<sup>2</sup> (3.1kg/m<sup>2</sup>)  
**Warranty:** 12 years  
**Format:** Sheet



# Suprema

## Designer Slip Resistant Flooring

### Maxis Cleaning Technology Collection



**Altro Suprema™** has a subtle, translucent look that will add elegance and sophistication to any design concept. It is ideal for a variety of areas including general circulation spaces, classrooms, retail stores, and a wide range of health-care applications.

- Altro Maxis Cleaning Technology - *reduces cleaning and maintenance*
- AltroSan Integrated Bacteriostat - *inhibits growth of microorganisms and MRSA's*
- Excellent Color Retention, Dirt and Stain Resistance
- Low VOC Emissions for Improved Air Quality
- Easy to Install, Weld and Cove
- May Contribute to or Comply with LEED™ Credits
- Contains 5% Post-Consumer Recycled Content
- Does not contain DEHP

**Thickness:** 0.08" (2.0mm)  
**Roll Length:** 66' (20m)  
**Width:** 6'7" (2.0m)  
**Weight:** 4.6lbs/yd<sup>2</sup> (2.5kg/m<sup>2</sup>)  
**Warranty:** 7 years  
**Format:** Sheet



<b>Apollo SU2005</b> WR: 186 AM: 56	<b>Balder SU2018</b> WR: 229 AM: 239	<b>Fennel SU2031</b> WR: 262 AM: 154	<b>Freja SU2013</b> WR: 230 AM: 203	<b>Heimdall SU2020</b> WR: 157 AM: 42	<b>Jupiter SU2006</b> WR: 190 AM: 180	<b>Loam SU2024</b> WR: 260 AM: 260	<b>Mercury SU2010</b> WR: 191 AM: 191
<b>Minerva SU2009</b> WR: 20 AM: 20	<b>Njord SU2016</b> WR: 231 AM: 73	<b>Oatmeal SU2025</b> WR: 265 AM: 265	<b>Odin SU2015</b> WR: 45 AM: 238	<b>Olive SU2023</b> WR: 263 AM: 89	<b>Pegasus SU2012</b> WR: 105 AM: 1	<b>Poseidon SU2003</b> WR: 193 AM: 154	<b>Thor SU2014</b> WR: 232 AM: 72
<b>Ull SU2019</b> WR: 146 AM: 20	<b>Valhalla SU2017</b> WR: 233 AM: 233	<b>Vanilla SU2028</b> WR: 264 AM: 50	<b>Wheat SU2032</b> WR: 266 AM: 225	<b>Wolf SU2021</b> WR: 261 AM: 81	<b>Zeus SU2002</b> WR: 194 AM: 71		

# Timbersafe II

## Wood-Look Slip Resistant Flooring

### Maxis Cleaning Technology Collection



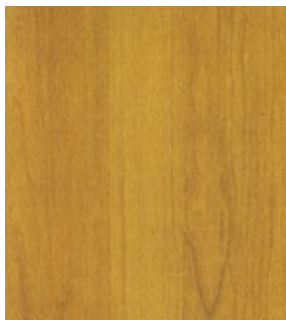
**Altro Timbersafe II™** provides the warmth and beauty of wood, with the slip and stain resistance of Altro safety flooring. Timbersafe is ideal for environments where style, timeless elegance, comfort, durability, and safety are needed. It is ideal for busy public areas, hospital patient rooms, waiting rooms, procedure rooms, corridors, reception areas, schools, and retail facilities.

- Altro Maxis Cleaning Technology - *reduces cleaning and maintenance*
- AltroSan Integrated Bacteriostat - *inhibits growth of microorganisms and MRSA's*
- Superior Slip Resistance, Even When Wet
- Excellent Stain Resistance
- Low VOC Emissions for Improved Air Quality
- May Contribute to or Comply with LEED™ Credits
- Contains 3% Post-Consumer Recycled Content
- Does not contain DEHP

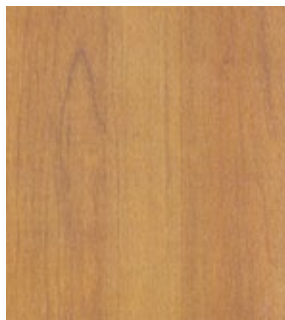
**Thickness:** 0.08" (2.0mm)  
**Roll Length:** 84' (25.64m)  
**Width:** 5' (1.56m)  
**Weight:** 4.8lbs/yd<sup>2</sup> (2.6kg/m<sup>2</sup>)  
**Warranty:** 7 years  
**Format:** Sheet



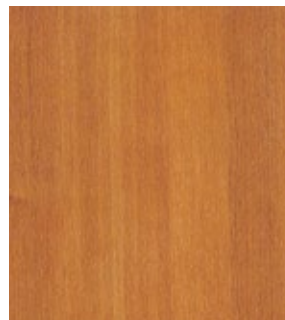
Blonde Oak TS2007  
WR: 225 AM: 225



Classic Oak TS2008  
WR: 15 AM: 15



Fruit Wood TS2014  
WR: 259 AM: 225



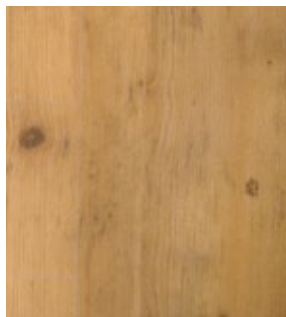
Golden Beech TS2010  
WR: 171 AM: 246



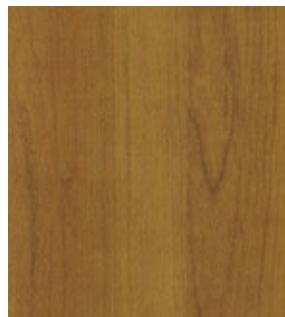
Mellow Beech TS2011  
WR: 224 AM: 224



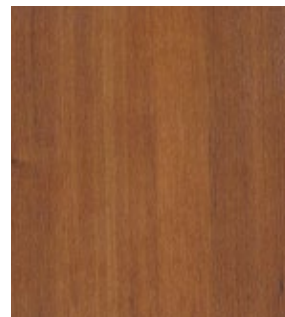
Rich Walnut TS2015  
WR: 227 AM: 227



Rustic Pine TS2012  
WR: 226 AM: 226



Traditional Oak TS2009  
WR: 258 AM: 258



Warm Cherry TS2013  
WR: 160 AM: 160



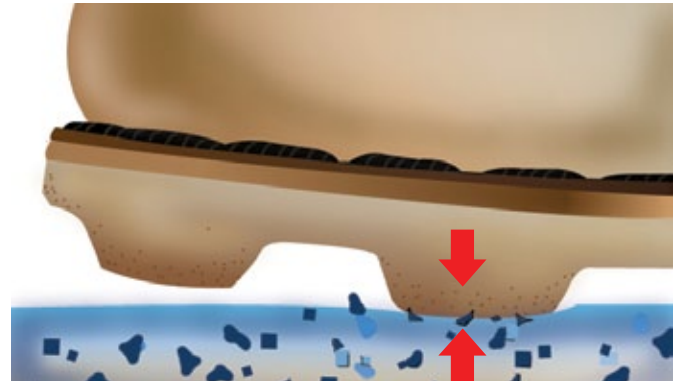
# Essential Safety Flooring Collection

Altro's unique, patented construction of flexible, high-grade vinyl with slip resistant grains throughout the thickness of our safety flooring, ensures a durable surface for the life of the floor.

## How safety flooring works

- Altro safety flooring appears smooth on the surface but provides a high level of slip resistance when walked on.
- The pressure created by walking over safety flooring causes the aggregates in the flooring to push up and rub against the shoe, creating friction. Because of this, Altro safety flooring remains slip resistant even when it is wet.

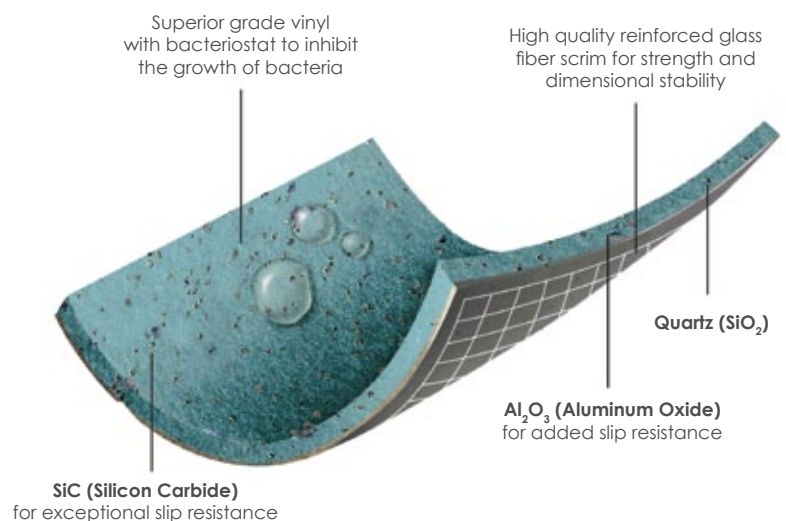
## superior slip-resistance



## the original slip resistant flooring designed for the toughest environments

## Science behind altro safety flooring

- Three types of aggregates embedded in sheet vinyl to prevent slips and falls.
- Integral Bacteriostat & Fungistat incorporated into material.
- Built-in advanced cleaning technology.
- No finish required.



# Walkway 20/SD

## General Purpose Safety Flooring

Essential Safety Collection

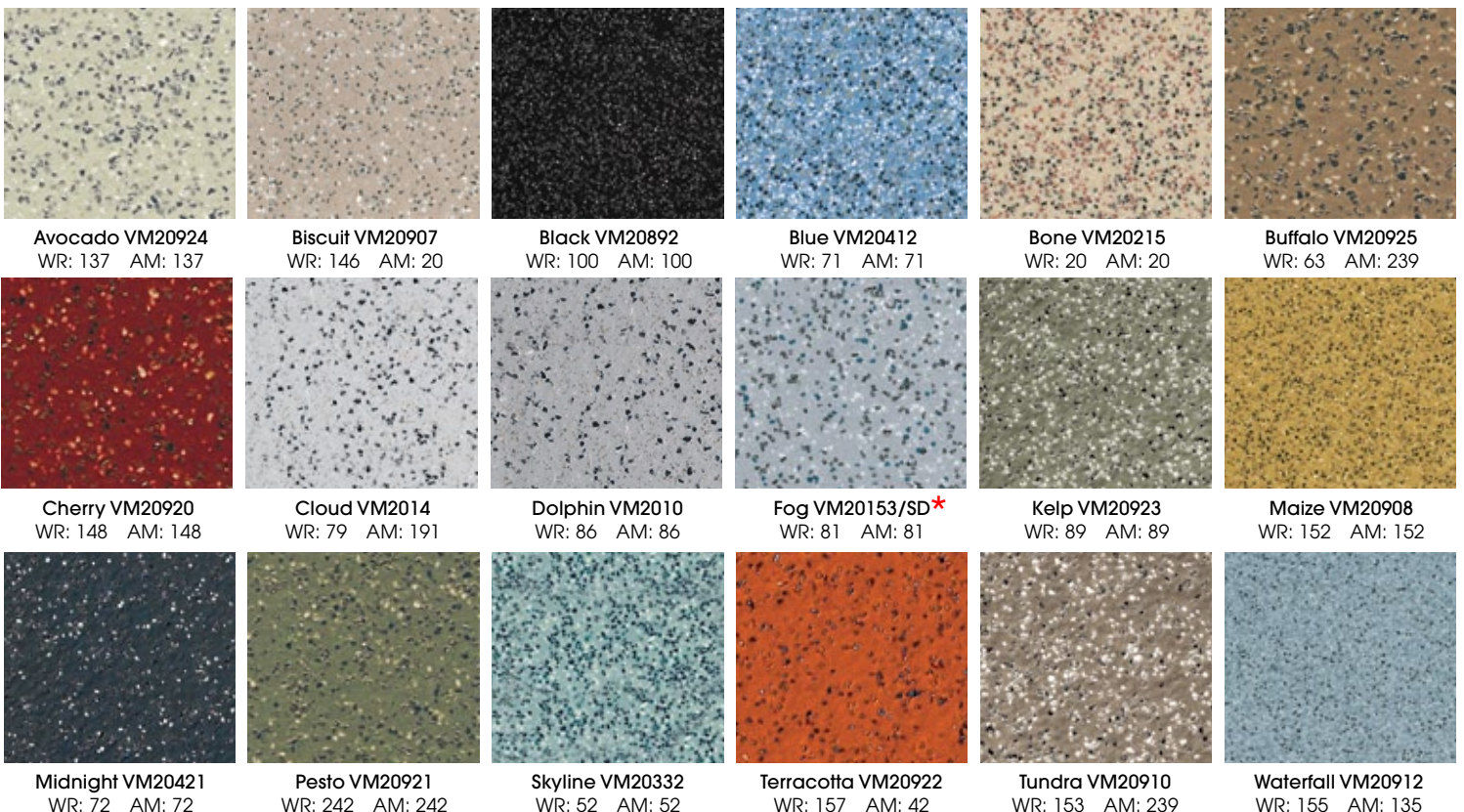
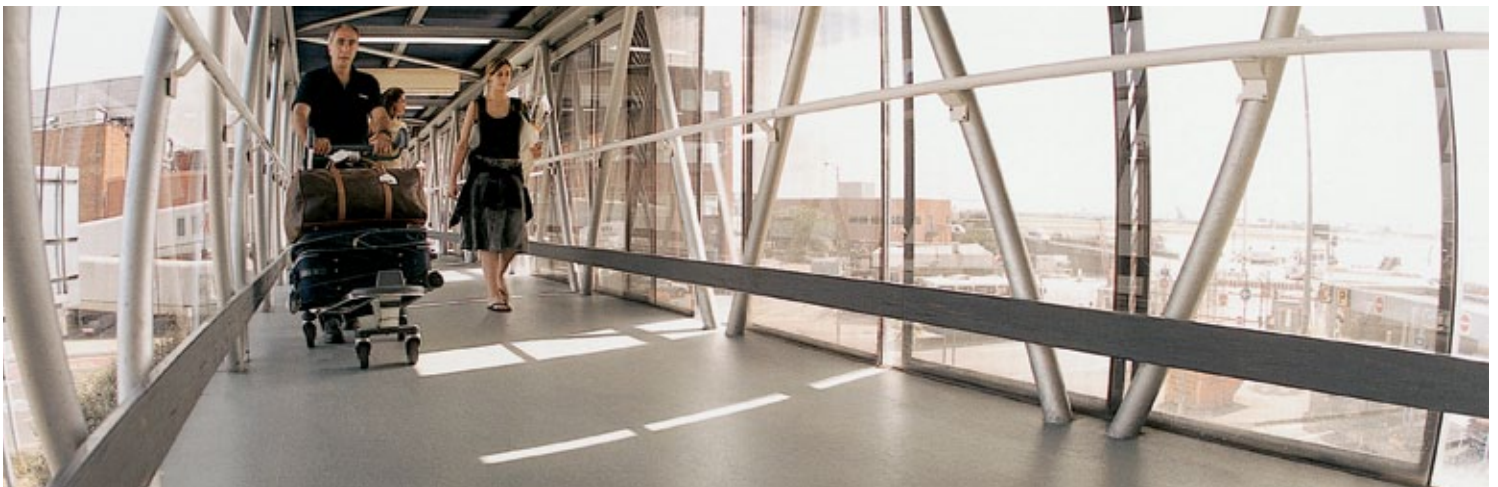


Altro Walkway 20™ is an attractive and economical safety floor. It is available in a wide range of colors to facilitate creative floor designs, and is ideal for many applications.

Select colors are available in static dissipative versions for areas with sensitive equipment, such as laboratories or electronic production areas.

- AltroSan Integrated Bacteriostat - *inhibits growth of microorganisms and MRSAs*
- Incorporates Altro Easyclean Technology - *for ease of cleaning*
- Low VOC Emissions for Improved Air Quality
- Contains 20% Recycled Content - 10% Post-Consumer and 10% Pre-Consumer
- May Contribute to or Comply with LEED™ Credits
- Does not contain DEHP or Phthalates

**Thickness:** 0.08" (2.0mm)  
**Roll Length:** 66' (20m)  
**Width:** 6'7" (2m)  
**Weight:** 4.8lbs/yd<sup>2</sup> (2.6kg/m<sup>2</sup>)  
**Warranty:** 10 years  
**Format:** Sheet



# Impressionist II

## Patterned Safety Flooring

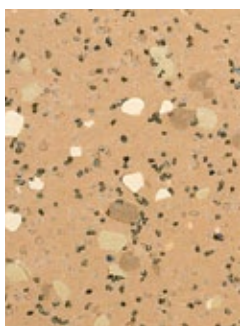
Essential Safety Collection



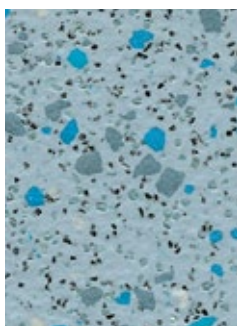
**Altro Impressionist II™** is a decorative yet practical safety floor for medium to high-traffic areas. The inclusion of colored chips within a complementary background creates an attractive visual texture. It is ideal for many areas including cafeterias, locker rooms, classrooms, and more.

- AltroSan Integrated Bacteriostat - *inhibits growth of microorganisms and MRSA's*
- Incorporates Altro EasyClean Technology - *for ease of cleaning*
- Colors Specially Selected to "Mix and Match"
- Low VOC Emissions for Improved Air Quality
- Contains 20% Recycled Content - 10% Post-Consumer and 10% Pre-Consumer
- May Contribute to or Comply with LEED™ Credits
- Does not contain DEHP or Phthalates

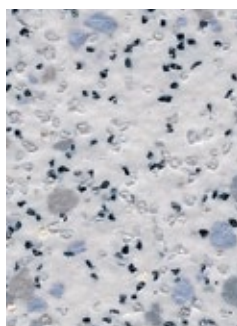
**Thickness:** 0.08" (2.0mm)  
**Roll Length:** 66' (20m)  
**Width:** 6'7" (2m)  
**Weight:** 4.6lbs/yd<sup>2</sup> (2.5kg/m<sup>2</sup>)  
**Warranty:** 10 years  
**Format:** Sheet



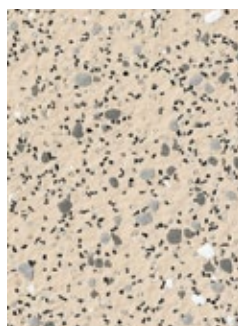
Adobe IP2008  
WR: 24 AM: 24



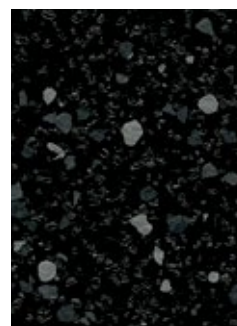
Aqua IP2018  
WR: 135 AM: 135



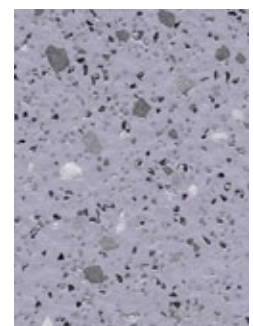
Arctic IP2012  
WR: 11 AM: 11



Canvas IP2009  
WR: 12 AM: 12



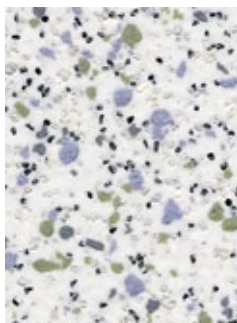
Ebony IP2001  
WR: 100 AM: 100



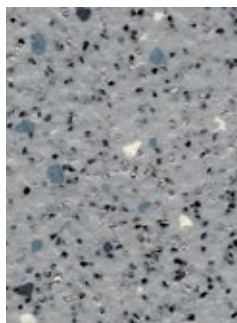
Lunar IP2005  
WR: 85 AM: 85



Mineral IP2003  
WR: 83 AM: 83



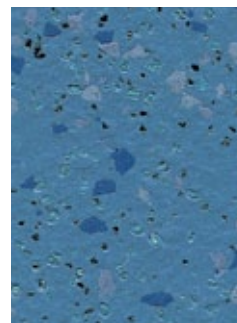
Oasis IP2011  
WR: 136 AM: 136



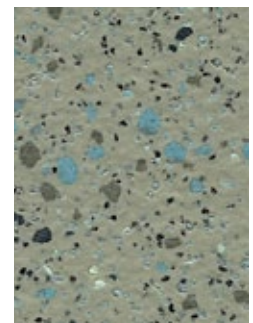
Ore IP2004  
WR: 81 AM: 81



Stucco IP2013  
WR: 105 AM: 1



Tranquil IP2017  
WR: 71 AM: 71



Zen IP2015  
WR: 137 AM: 137

# Marine 20

## Barefoot Safety Flooring for Wet Areas

Essential Safety Collection



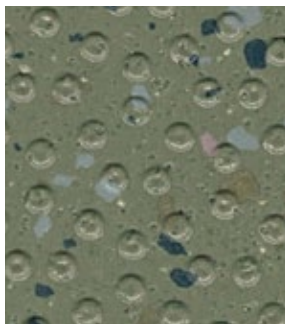
**Altro Marine™ 20** is specially designed for barefoot safety in wet areas such as swimming pools, shower areas, and locker rooms. It has a textured surface for underfoot comfort and slip resistance. Marine 20 is available in an attractive range of patterned shades to coordinate with wet area design themes.

- AltroSan Integrated Bacteriostat - *inhibits growth of microorganisms and MRSA's*
- Incorporates Altro Easyclean Technology - *for ease of cleaning*
- Superior Slip Resistance and Comfortable for Bare Feet in Wet Areas
- Easy to Clean Embossed Surface and Easily Tanked for Showers
- Low VOC Emissions for Improved Air Quality
- Contains 10% Post-Consumer Recycled Content
- May Contribute to or Comply with LEED™ Credits
- Does not contain DEHP or Phthalates

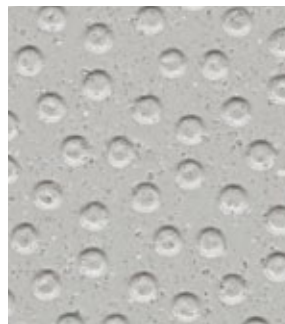
**Thickness:** 0.08" (2.0mm)  
**Roll Length:** 66' (20m)  
**Width:** 6'7" (2m)  
**Weight:** 4.8lbs/yd<sup>2</sup> (2.6kg/m<sup>2</sup>)  
**Warranty:** 7 years  
**Format:** Sheet



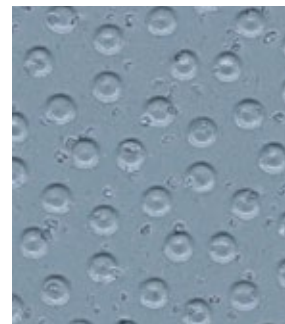
Cascade IPT20809  
WR: 105 AM: 1



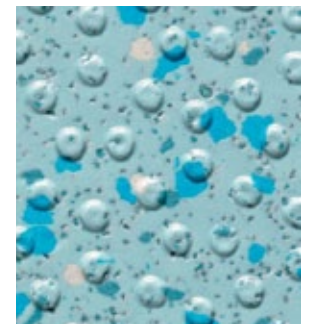
Fen IPT20815  
WR: 242 AM: 242



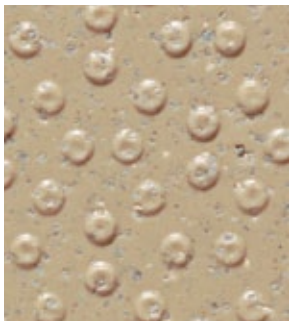
Gull T20813  
WR: 79 AM: 191



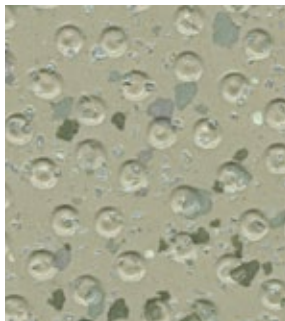
Marlin T20811  
WR: 203 AM: 203



Rainfall IPT20810  
WR: 135 AM: 135



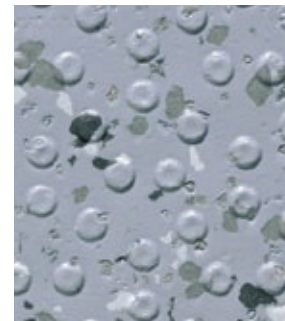
Reef T20801  
WR: 20 AM: 20



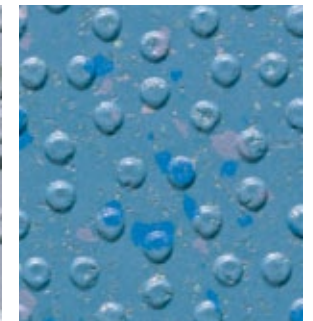
Seagrass IPT20814  
WR: 137 AM: 137



Shark IPT20812  
WR: 201 AM: 84



Steam IPT20807  
WR: 85 AM: 85



Tide IPT20808  
WR: 71 AM: 71

# Designer 25

## Heavy-Duty Safety Flooring

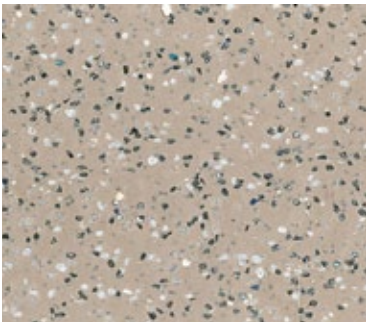
Essential Safety Collection



**Altro Designer™ 25** is a heavy-duty safety floor with extra colored quartz particles for added wear resistance and an attractive appearance. It is ideal for busy areas such as supermarkets, food service and bar areas, ramps, laboratories, lobbies, and bathrooms.

- AltroSan Integrated Bacteriostat - *inhibits growth of microorganisms and MRSA*s
- Incorporates Altro EasyClean Technology - *for ease of cleaning*
- Superior Slip Resistance and Durability
- Low VOC Emissions for Improved Air Quality
- Contains 10% Post-Consumer Recycled Content
- May Contribute to or Comply with LEED™ Credits
- Does not contain DEHP or Phthalates

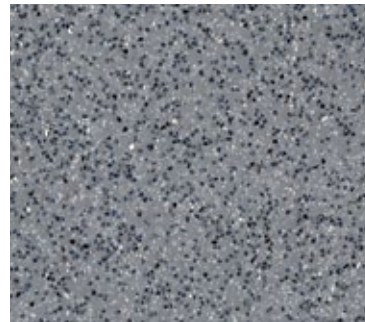
**Thickness:** 0.10" (2.5mm)  
**Roll Length:** 66' (20m)  
**Width:** 6'7" (2m)  
**Weight:** 5.9lbs/yd<sup>2</sup> (3.2kg/m<sup>2</sup>)  
**Warranty:** 12 years  
**Format:** Sheet



**Biscuit D25904**  
WR: 146 AM: 20



**Bone D25215**  
WR: 20 AM: 20



**Fog D25153**  
WR: 81 AM: 81



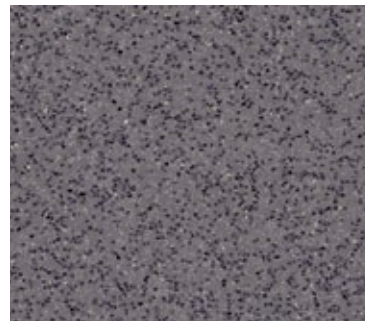
**Jet D2501**  
WR: 100 AM: 100



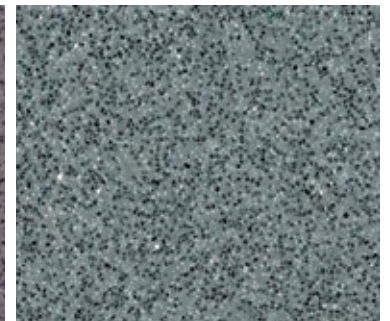
**Midnight D25421**  
WR: 72 AM: 72



**Rust D25907**  
WR: 150 AM: 150



**Storm D25903**  
WR: 82 AM: 82



**Skyline D25332**  
WR: 52 AM: 52

# Stronghold 30

## 3mm Safety Flooring

Essential Safety Collection



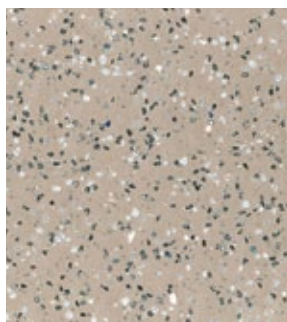
**Altro Stronghold 30™** is a heavy-duty slip resistant flooring that is designed to provide extra slip resistance for wet and greasy areas, such as commercial kitchens, dish washing areas, and walk-in coolers. The modified formulation also gives increased levels of underfoot comfort and noise reduction.

- AltroSan Integrated Bacteriostat - *inhibits growth of microorganisms and MRSA's*
- Incorporates Altro Easyclean Technology - *for ease of cleaning*
- Superior Slip Resistance and Durability
- Excellent Chemical Resistance
- Low VOC Emissions for Improved Air Quality
- Contains 10% Post-Consumer Recycled Content
- May Contribute to or Comply with LEED™ Credits
- Does not contain DEHP or Phthalates

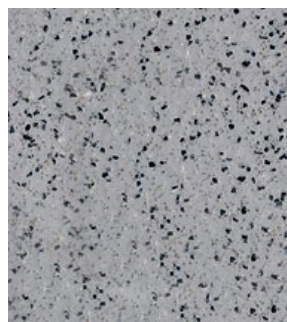
**Thickness:** 0.12" (3.0mm)  
**Roll Length:** 49' (15m)  
**Width:** 6'7" (2m)  
**Weight:** 6.3lbs/yd<sup>2</sup> (3.4kg/m<sup>2</sup>)  
**Warranty:** 10 years  
**Format:** Sheet



**Abyss K3001**  
WR: 100 AM: 100



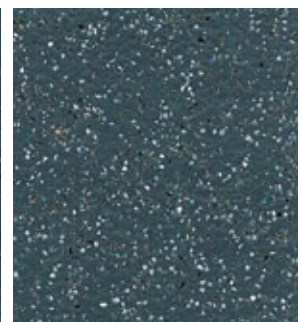
**Biscuit K30907**  
WR: 146 AM: 20



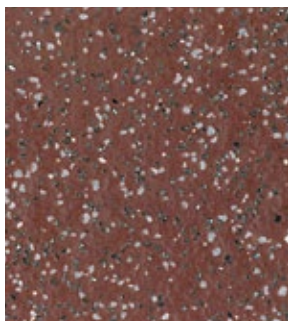
**Dolphin K3010**  
WR: 86 AM: 86



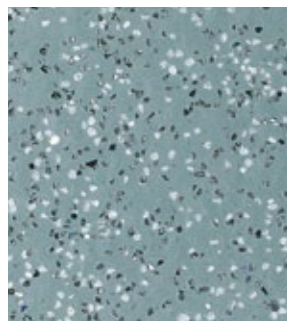
**Lagoon K30910**  
WR: 39 AM: 34



**Midnight K30421**  
WR: 72 AM: 72



**Russet K30262**  
WR: 41 AM: 41



**Skyline K30332**  
WR: 52 AM: 52



**Tundra K30500**  
WR: 153 AM: 239

# Atlas 40

## Heavy-Duty Specialty Safety Flooring

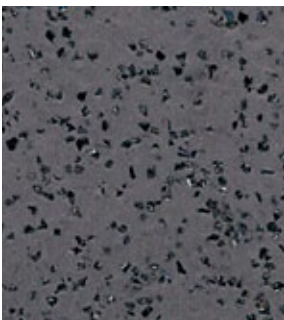
Essential Safety Collection



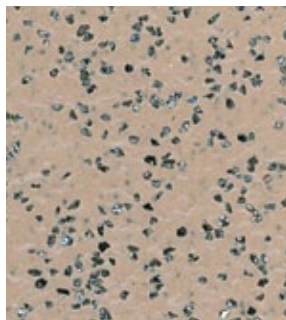
**Altro Atlas™ 40** is a special industrial safety flooring for heavy-duty applications. At 0.16" (4.0mm) thick, it is the most robust product in Altro's safety flooring range, ideal for machine shops, chemical processing areas, heavy-duty cart and mezzanine areas, and 24/7 commercial kitchens.

- Incorporates Altro Easyclean Technology - for ease of cleaning
- AltroSan Integrated Bacteriostat - inhibits growth of microorganisms and MRSA's
- Superior Slip Resistance When Wet or in Greasy Conditions
- Extra Thickness for Resistance to Point Loading
- Low VOC Emissions for Improved Air Quality
- Contains 10% Post-Consumer Recycled Content
- May Contribute to or Comply with LEED™ Credits
- Does not contain DEHP or Phthalates

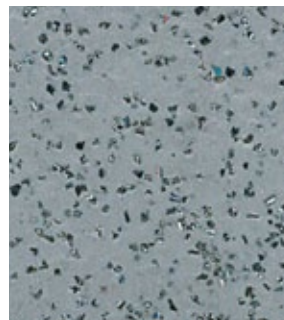
**Thickness:** 0.16" (4.0mm)  
**Roll Length:** 41' (12.5m)  
**Width:** 6'7" (2.0m)  
**Weight:** 8.2lbs/yd<sup>2</sup> (4.5kg/m<sup>2</sup>)  
**Warranty:** 15 years  
**Format:** Sheet



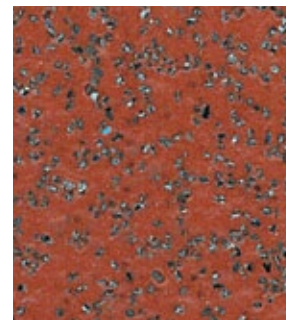
Anvil X4094  
WR: 101 AM: 72



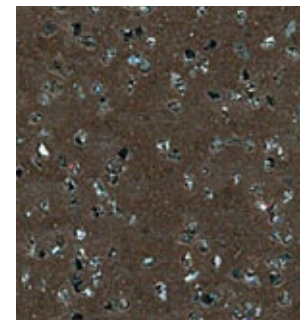
Mushroom X4042  
WR: 24 AM: 24



Pewter Grey X4039  
WR: 81 AM: 81



Quarry Red X4060  
WR: 42 AM: 42



Walnut X4086  
WR: 62 AM: 62

# ContraX

## Economical Safety Sheet

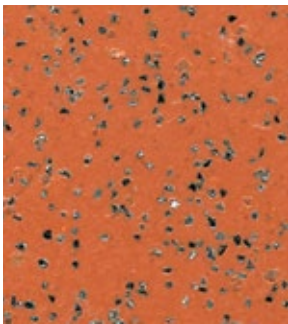
### Essential Safety Collection



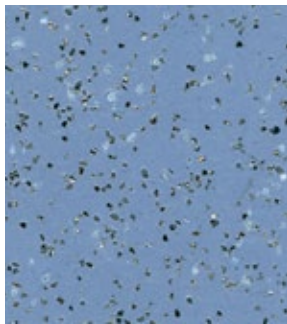
Altro ContraX™ is the standard choice for maintaining slip resistant flooring for budget constrained projects. Typical areas of use include elderly care centers, schools and cafeterias.

- AltroSan Integrated Bacteriostat - *inhibits growth of microorganisms and MRSAs*
- Incorporates Altro Easyclean Technology - *for ease of cleaning*
- Excellent Slip Resistance
- Low VOC Emissions for Improved Air Quality
- Contains 10% Post-Consumer Recycled Content
- May Contribute to or Comply with LEED™ Credits
- Does not contain DEHP or Phthalates

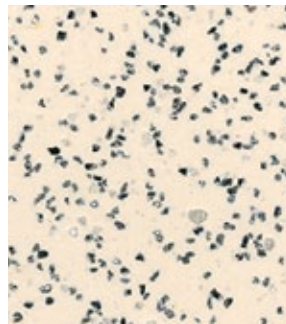
**Thickness:** 0.08" (2.0mm)  
**Roll Length:** 66' (20m)  
**Width:** 6'7" (2m)  
**Weight:** 4.1lbs/yd<sup>2</sup> (2.2kg/m<sup>2</sup>)  
**Warranty:** 5 years  
**Format:** Sheet



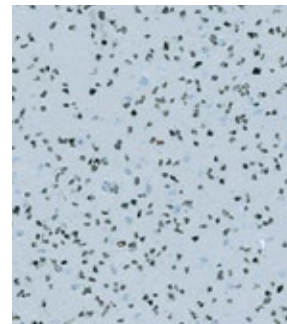
Brick Red CX2003  
WR: 47 AM: 42



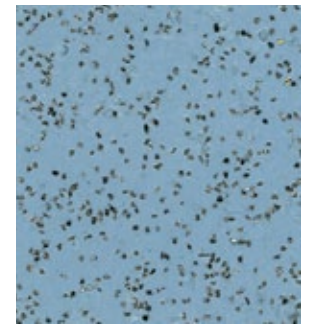
Dusky Blue CX2005  
WR: 74 AM: 74



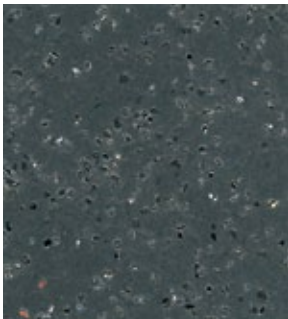
Light Beige CX2001  
WR: 12 AM: 12



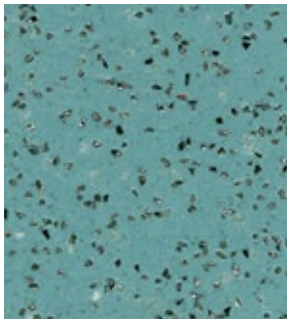
Light Grey CX2004  
WR: 85 AM: 85



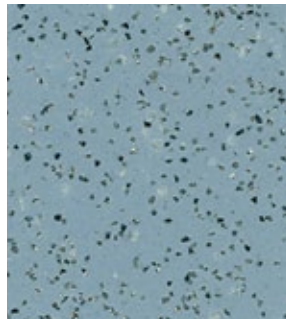
Mid Blue CX2007  
WR: 228 AM: 228



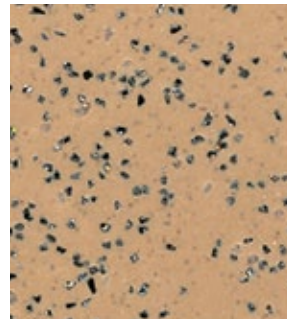
Nearly Black CX2009  
WR: 101 AM: 72



Simply Green CX2008  
WR: 55 AM: 56



Slate Grey CX2006  
WR: 84 AM: 84



Toffee Brown CX2002  
WR: 27 AM: 27



# Cordiale

## PVC-Free Safety Flooring

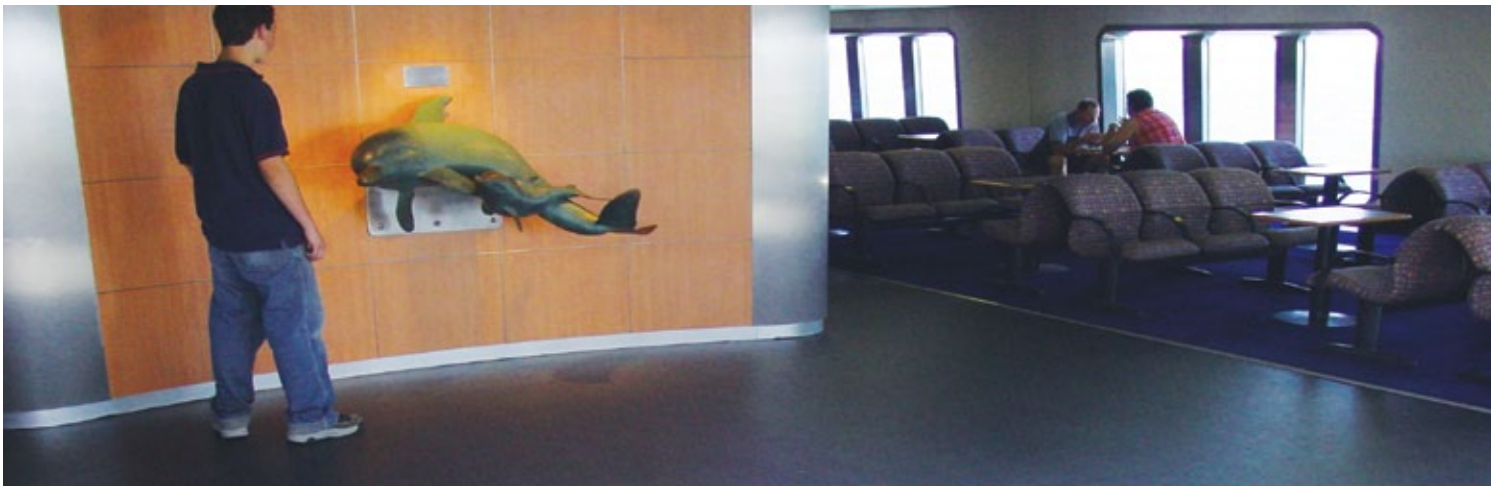
### Essential Safety Collection



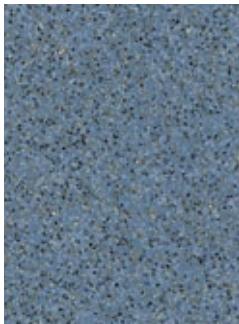
**Altro Cordiale™** is PVC-Free (non-chlorine) safety flooring. Typical areas of use include hallways, entranceways and food preparation areas as well as installations where PVC-free, chlorine free flooring is required.

- AltroSan Integrated Bacteriostat - *inhibits growth of microorganisms and MRSA's*
- Incorporates Altro Easyclean Technology - *for ease of cleaning*
- Superior Slip Resistance
- Does not contain DEHP or Phthalates

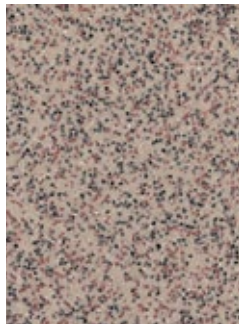
**Thickness:** 0.08" (2.0mm)  
**Roll Length:** 66' (20m)  
**Width:** 6'7" (2m)  
**Weight:** 5.0lbs/yd<sup>2</sup> (2.7kg/m<sup>2</sup>)  
**Warranty:** 5 years  
**Format:** Sheet



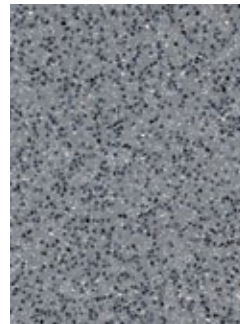
**Black COR 892**  
WR: 100 AM: 100



**Blue COR 20412**  
WR: 71 AM: 71



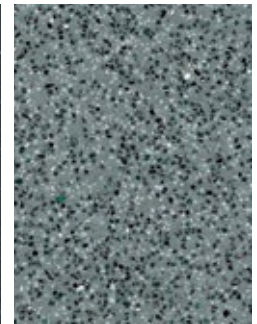
**Bone COR 20215**  
WR: 20 AM: 20



**Fog COR 20153**  
WR: 81 AM: 81



**Midnight COR 421**  
WR: 72 AM: 72



**Skyline COR 332**  
WR: 52 AM: 52

# Commercial Smooth Flooring Collection

High performance smooth flooring solutions are ideal for the most demanding areas in any building, whether commercial, industrial, or the public sector.

The smooth flooring collection offers a range of flooring options that provide solutions for any area from lobbies and retail environments to warehouses and patient rooms.

The collection includes wood visuals, high performance quartz tile, enhanced vinyl tile and a colorful homogeneous sheet range.



Most products in the flooring collection are built with a factory-finished polyurethane coating. This allows for easy and excellent maintenance and cleaning properties.



High performance polyurethane finish makes floors easier to clean and less susceptible to scratching and soiling.

## low maintenance and durable eclectic designer options



# Ethos

## Wood Visual Sheet Flooring



**AltroSmooth Ethos™** is a versatile, high-quality smooth vinyl floor, providing a natural wood visual at an economical cost. It is suitable for a variety of areas including retail stores, offices, and healthcare applications such as hospitals, nursing homes, and assisted living facilities.

- Available in 18 Natural Wood Hues
- Easy to Install, Weld, and Cove for a Seamless, Hygienic Surface
- Factory-Finished PU Coating for Added Protection and Ease of Cleaning
- Contains 40% Pre-Consumer Recycled Content

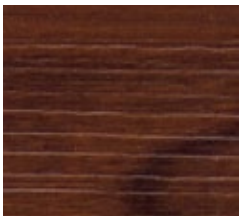
**Thickness:** 0.08" (2.0mm)  
**Roll Length:** 59' (18m)  
**Width:** 6' (1.82m)  
**Weight:** 5.5lbs/yd<sup>2</sup> (3.0kg/m<sup>2</sup>)  
**Warranty:** 10 years  
**Format:** Sheet



**Antique Oak 389-28**  
389-28WR  
Plank: 2.75" W (70mm)



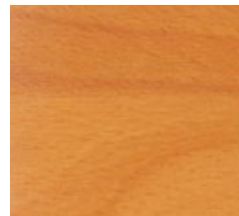
**Bay Oak 389-23**  
389-23WR  
Plank: 1.5" W (38mm)



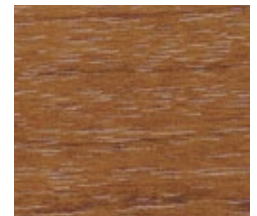
**Black Cherry 389-225**  
389-28WR  
Plank: 3" W (76.2mm)



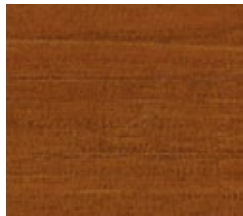
**Blonde Maple 389-205**  
389-205WR  
Plank: 2.5" W (63.5mm)



**Deep Beech 389-215**  
389-215WR  
Plank: 2.5" W (63.5mm)



**Deep Maple 389-208**  
389-208WR  
Plank: 2.5" W (63.5mm)



**Deep Walnut 389-211**  
389-211WR  
Plank: 4" W (101.6mm)



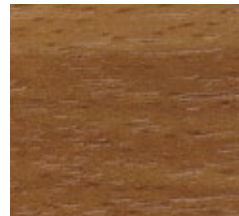
**Flaxen Beech 389-86**  
389-86WR  
Plank: 2.5" W (63.5mm)



**Golden Maple 389-206**  
389-206WR  
Plank: 2.5" W (63.5mm)



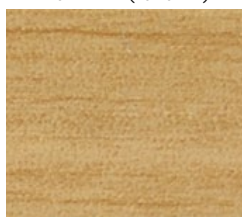
**Golden Oak 389-21**  
389-21WR  
Plank: 1.5" W (38mm)



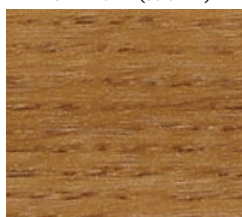
**Honey Beech 389-87**  
389-87WR  
Plank: 2.5" W (63.5mm)



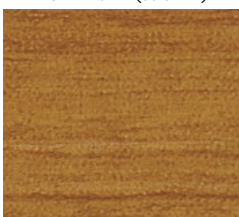
**Light Cherry 389-223**  
389-223WR  
Plank: 3" W (76.2mm)



**Light Walnut 389-209**  
389-209WR  
Plank: 4" W (101.6mm)



**Medium Oak 389-26**  
389-26WR  
Plank: 2.75" W (70mm)



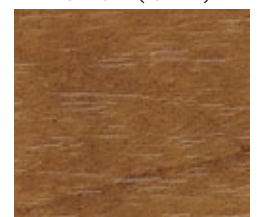
**Medium Walnut 389-210**  
389-210WR  
Plank: 4" W (101.6mm)



**Natural Cork 389-5002**  
389-5002WR



**Rich Cherry 389-96**  
389-96WR  
2.5"/3"/3.5" (57/76/89mm)



**Rich Maple 389-207**  
389-207WR  
Plank: 2.5" W (63.5mm)

# Chrysalis

## Homogeneous Sheet Flooring



**AltroSmooth Chrysalis™** is a flexible, homogeneous, multipurpose, smooth flooring suitable for heavy traffic, mixed condition areas. It is very hard-wearing and its PUR finish makes Chrysalis easy to clean and maintain.

- PUR Coating - *polyurethane surface treatment with excellent cleaning characteristics*
- Densely Compacted Surface for Improved Wear and Ease of Maintenance
- Anti-Bacterial and Fungicidal
- Antistatic

**Thickness:** 0.08" (2.0mm)  
**Roll Length:** 66' (20m)  
**Width:** 6'7" (2m)  
**Weight:** 5.5lbs/yd<sup>2</sup> (3.0kg/m<sup>2</sup>)  
**Warranty:** 10 years  
**Format:** Sheet



**Azure 85300011**  
WR: 06 AM: 211



**Botanic 85300016**  
WR: 36 AM: 202



**Concrete 85300013**  
WR: 04 AM: 85



**Coral 85300002**  
WR: 218 AM: 200



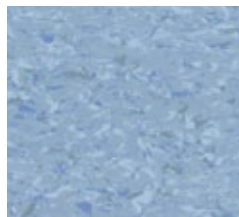
**Fountain 85300004**  
WR: 219 AM: 74



**Frost 85300009**  
WR: 197 AM: 197



**Lavender 85300007**  
WR: 69 AM: 134



**Lupin 85300008**  
WR: 38 AM: 203



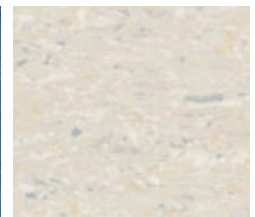
**Mauve 85300003**  
WR: 220 AM: 200



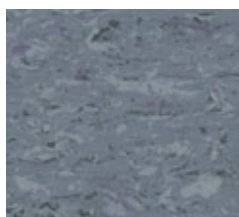
**Meadow 85300012**  
WR: 37 AM: 202



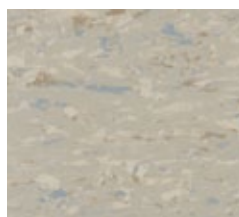
**Ocean 85300015**  
WR: 07 AM: 74



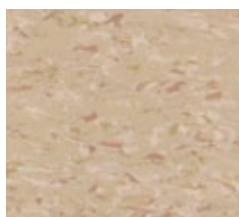
**Parchment 85300001**  
WR: 02 AM: 11



**Quartz 85300014**  
WR: 201 AM: 84



**Sand 85300005**  
WR: 67 AM: 13



**Sienna 85300006**  
WR: 68 AM: 24



**Steel 85300010**  
WR: 80 AM: 85

# Dolce

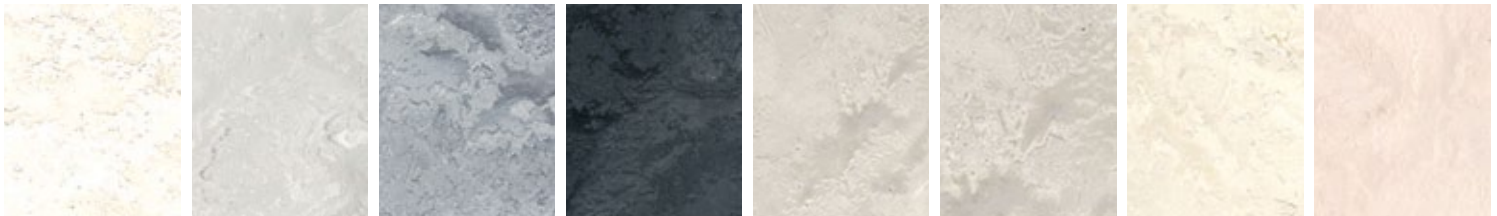
## Enhanced Vinyl Tile Flooring



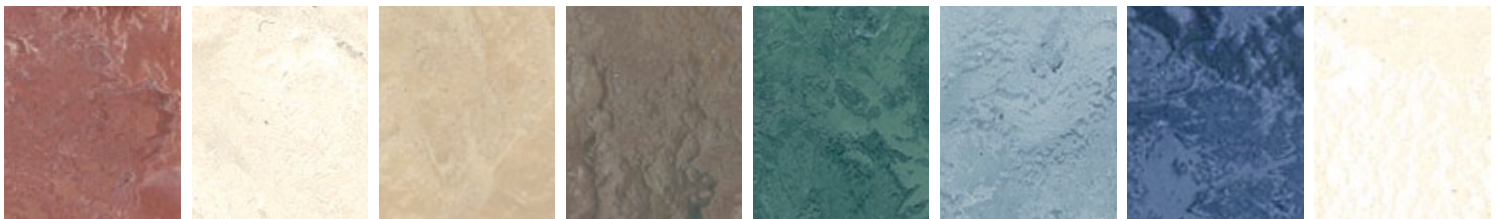
**AltroSmooth Dolce™** enhanced vinyl tile combines the natural beauty of stone with the durability and resilience of enhanced vinyl. With its through pattern construction, and a factory-finished PU coating, Dolce will maintain its look throughout the life of the floor.

- 1800 PSI
- PU Coating - *for reduced maintenance costs*
- Homogeneous Through Pattern Construction
- Balanced Color Palette with Soft Neutral Marbled Patterns
- Contains 72% Pre-Consumer Recycled Content
- Solid Vinyl Technology with Enhanced Vinyl Content for Strength and Durability

**Thickness:** 0.12" (3.0mm)  
**Size of Tiles:** 18" x 18" (457.2 mm x 457.2 mm)  
**No. Tiles per Box :** 15 Tiles  
**Area per Box:** 33.75 sq. ft (3.13m<sup>2</sup>)  
**Weight per Box:** 44.35lbs (20.12kg)  
**Warranty:** 10 years  
**Format:** Tile



AD 501      AD 502      AD 503      AD 504      AD 505      AD 506      AD 507      AD 509



AD 511      AD 512      AD 514      AD 515      AD 522      AD 523      AD 524      AD 525



AD 528      AD 530      AD 532      AD 605      AD 606      AD 608      AD 609      AD 611

# CS Line

PVC-Free Commercial Sheet Flooring



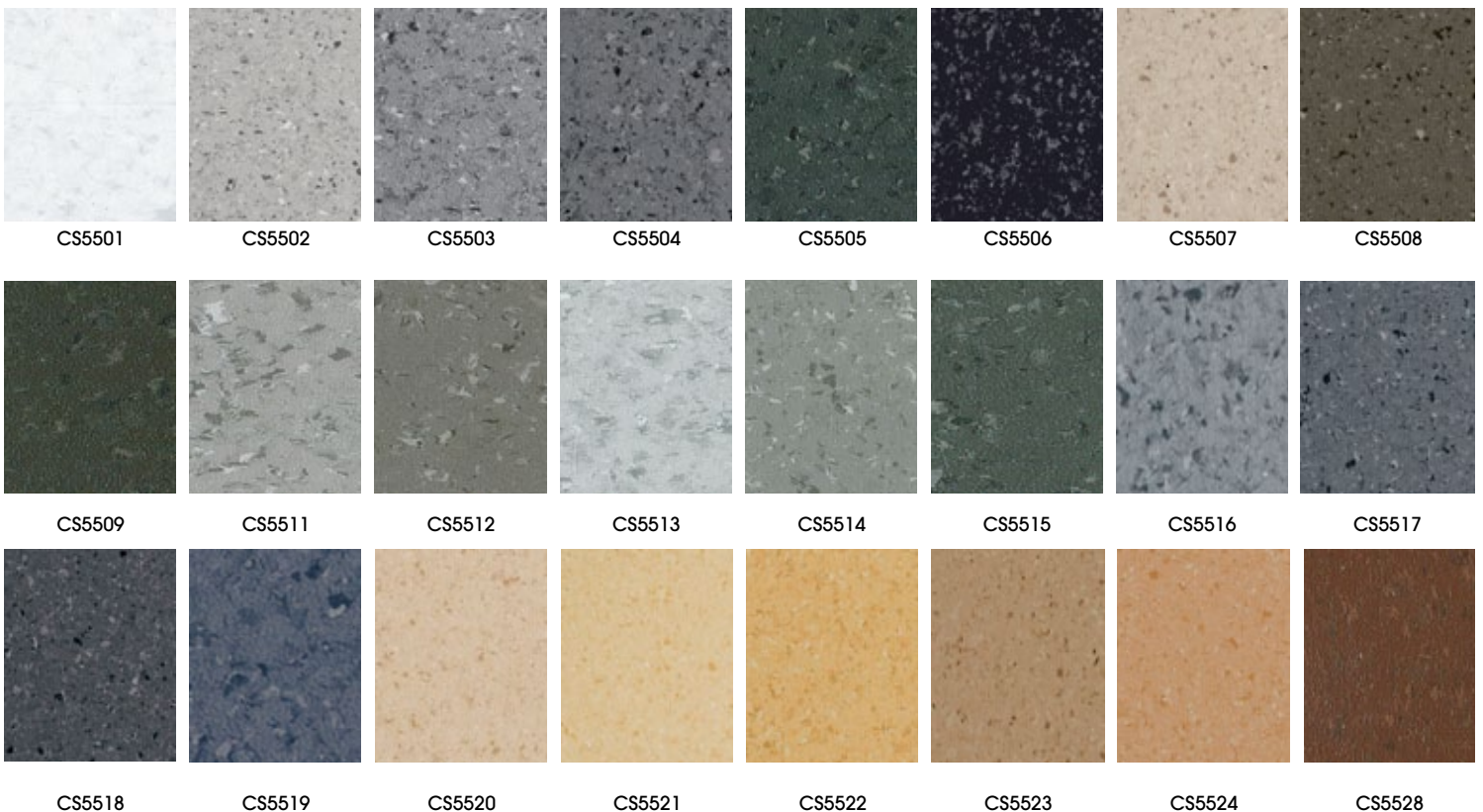
## Commercial Flooring



CS Line™ is a new generation of flooring designed from minerals and thermoplastic polymers. It is ideal for general public areas including heavy traffic and heavy load areas.

- PVC-Free Commercial Sheet Flooring
- No Wax Required
- Low VOCs - Complies with CA 01350
- Excellent Stain Resistance
- Bacteria Resistant and Anti Static
- Contains 25% Pre-Consumer Recycled Content

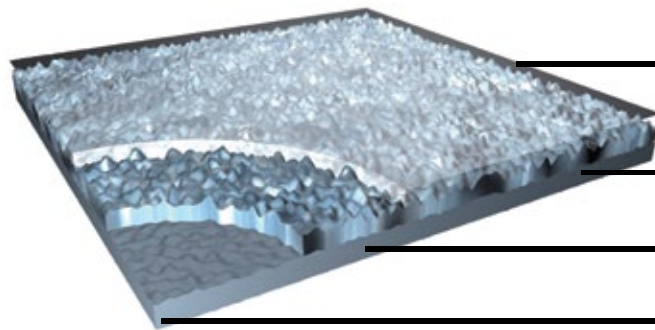
**Thickness:** 0.08" (2.0mm)  
**Roll Length:** 82.02' (25m)  
**Width:** 4'9" (1.45m)  
**Weight:** 5.9lbs/yd<sup>2</sup> (3.2kg/m<sup>2</sup>)  
**Warranty:** 10 years  
**Format:** Sheet



# CS Line

## PVC-Free Commercial Sheet Flooring

### Commercial Flooring



Slightly embossed surface structure which holds up under foot, easy to maintain.

Compact ionomer-impregnated wear layer prevents dirt from penetrating, and provides excellent chemical resistance.

Pattern layer: 3-colored chips

Base layer made of recycled material



CS5529

CS5539

CS5541

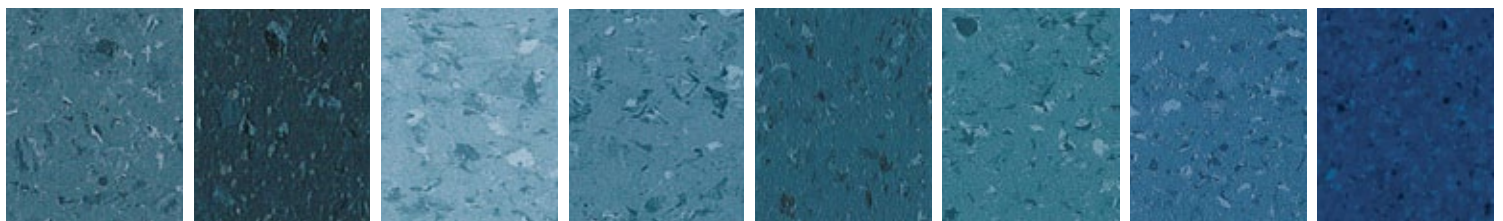
CS5542

CS5543

CS5544

CS5549

CS5551



CS5552

CS5553

CS5554

CS5555

CS5556

CS5557

CS5558

CS5559



CS5560

CS5561

CS5562

CS5563

CS5564

CS5565

CS5566

CS5569

# Quartz Tile

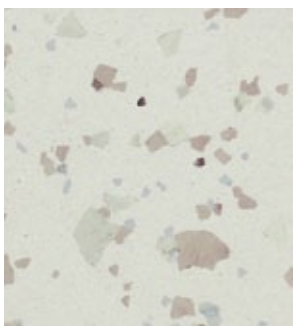
Extremely Durable Quartz Tile Flooring - Chip Design



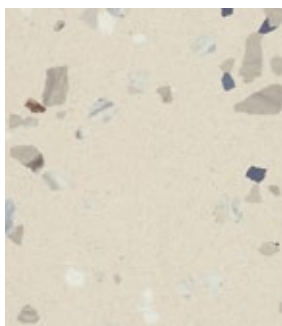
**Altro Quartz Tile™** is a high performance, heavy-duty smooth flooring solution for the most demanding areas in a building, whether commercial, industrial, or public sector. It is suitable for heavy pedestrian traffic areas, corridors, sales floors, cafeterias, warehouse areas, and loading docks.

- 3,500 PSI
- Extremely Durable
- Easy to Install and Maintain
- Homogeneous Construction - color, chipping and marbling won't wear through
- Contains 30% Pre-Consumer Recycled Content
- PUR Coating - polyurethane surface treatment with excellent cleaning characteristics

**Thickness:** 0.08" (2.0mm)  
**Size of Tiles:** 24" x 24" (610mm)  
**No. Tiles per Box:** 12 Tiles  
**Area per Box:** 48 sq. ft (4.46m<sup>2</sup>)  
**Weight per Box:** 39.33lbs (17.84kg/m<sup>2</sup>)  
**Warranty:** 15 years  
**Format:** Tile



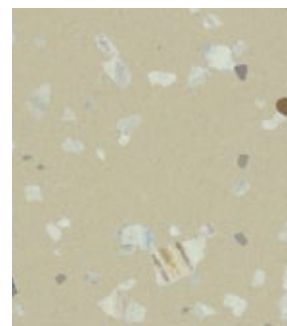
AQT-CD 0210



AQT-CD 0211



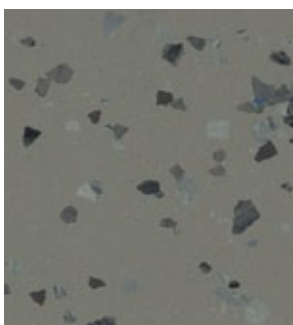
AQT-CD 0212



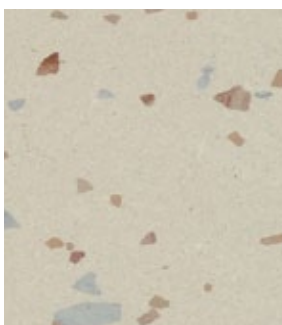
AQT-CD 0213



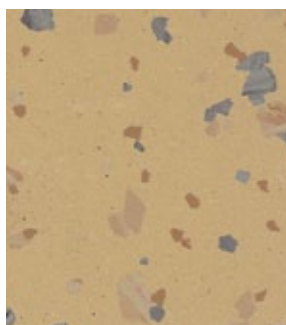
AQT-CD 0214



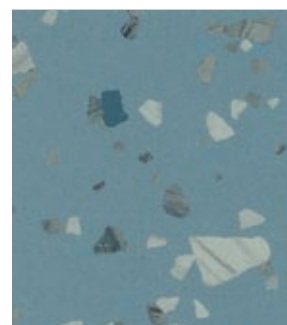
AQT-CD 0215



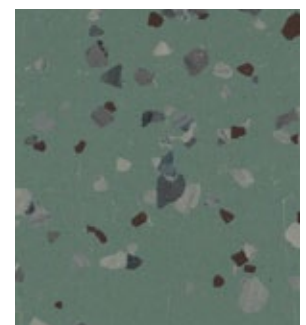
AQT-CD 0221



AQT-CD 0223



AQT-CD 0251



AQT-CD 0263



# Quartz Tile

Commercial Flooring

Extremely Durable Quartz Tile Flooring - Smooth Design



AQT 0110

AQT 0111

AQT 0112

AQT 0113

AQT 0114

AQT 0115

AQT 0119



AQT 0121

AQT 0122

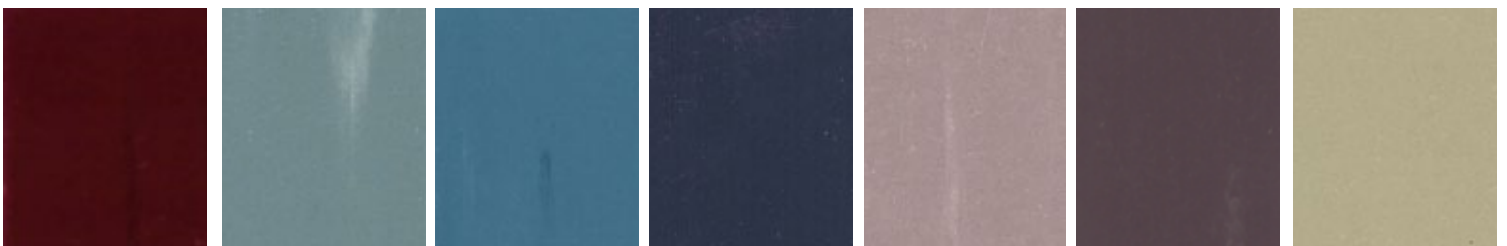
AQT 0123

AQT 0124

AQT 0126

AQT 0141

AQT 0142



AQT 0143

AQT 0151

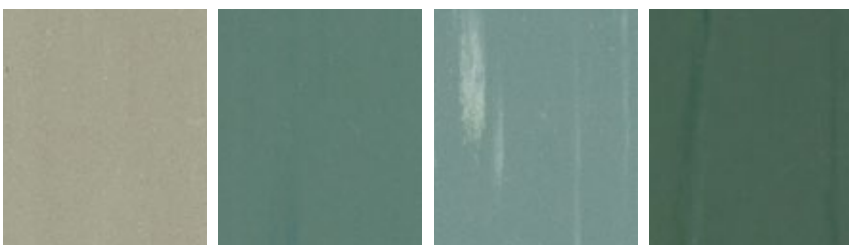
AQT 0152

AQT 0153

AQT 0158

AQT 0159

AQT 0161



AQT 0162

AQT 0163

AQT 0164

AQT 0165

# Melodico

## General Purpose Smooth Flooring

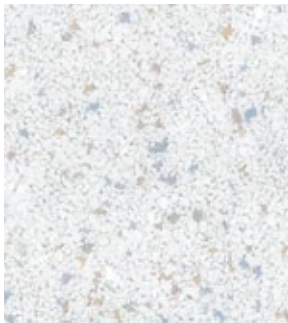
Commercial Flooring



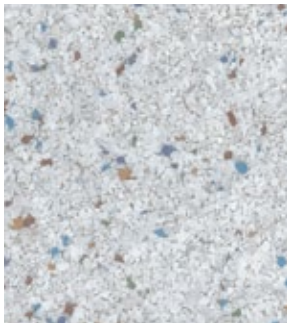
**Altro Melodico™** is a decorative, commercial grade, inlaid sheet vinyl flooring material usable for general circulation areas. Typical areas of use include hospitals, elderly care centers, schools and cafeterias.

- Economical Vinyl Sheet Flooring
- Durable and Easy to Maintain
- Chip Pattern Hides Soiling
- Contains 30% Pre-Consumer Recycled Content

**Thickness:** 0.08" (2.0mm)  
**Roll Length:** 59' (18m)  
**Width:** 6' (1.83m)  
**Weight:** 5.9lbs/yd<sup>2</sup> (3.2kg/m<sup>2</sup>)  
**Warranty:** 10 years  
**Format:** Sheet



**MM201**  
WR: MM201WR



**MM203**  
WR: MM203WR



**MM205**  
WR: MM205WR



**MM207**  
WR: MM207WR



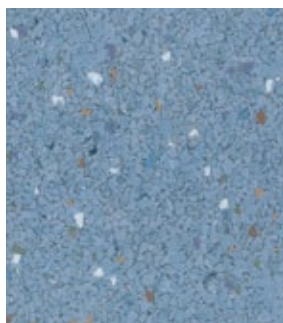
**MM211**  
WR: MM211WR



**MM213**  
WR: MM213WR



**MM215**  
WR: MM215WR



**MM216**  
WR: MM216WR

# Whiterock Wall Systems

## How Whiterock stacks up against other wall systems

### hygienic performance

- Whiterock wall systems are available in a growing number of color options and jointing systems to provide an aesthetically pleasing solution and a completely hygienic installation.

### heat formed

- Whiterock can be formed and bent around corners, pipes and other extrusions for a single continuous surface. Other wall coverings only work with bacteria harboring accessories and seam treatments.

### maintenance free

- Whiterock's smooth wipe clean surface doesn't require ongoing maintenance or downtime unlike chipping paint and cracked, grouted tile in shower areas.

### durability

- Consistent 2.5mm thickness on corner bends provides high impact resistance and eliminates the need for corner guards. Epoxy paint won't protect the wall surface and it simply can't stand up to Whiterock. It will crack, peel and require constant repainting and downtime for maintenance.

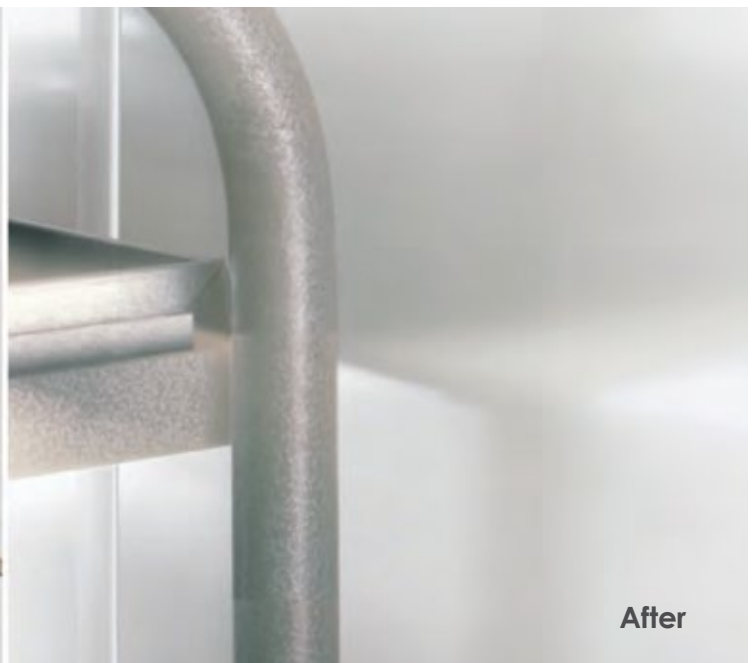
### impervious

- Whiterock's unique installation method prevents water penetration behind walls, even in shower areas.

### flexible design options

- Whiterock can have digitally printed images embedded in the panel allowing for endless design options without compromising hygiene or durability.

**hygienic wall systems**  
durable, water-tight, seamless finish



# Altro Whiterock

Hygienic Wall Systems

Wall Panels



**Altro Whiterock™** is a durable, water-tight, seamless smooth wall system designed for building environments that are required to meet strict hygienic standards. The panels provide a stain resistant, wipe clean surface with no gaps or cracks for bacteria to hide in. It is extremely impact resistant and stands up to the toughest of industrial areas.

- Low Maintenance
- An Impervious Surface
- Excellent Stain Resistance and Cleanability
- Class A Fire Rated

**Panel Sizes:** 4' x 8' (1.22m x 2.44m)

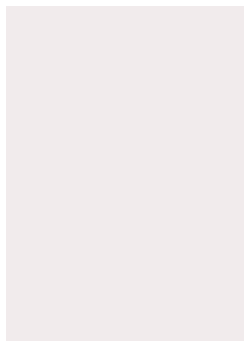
4' x 10' (1.22m x 3.05m)

**Thickness:** 0.10" (2.5mm)

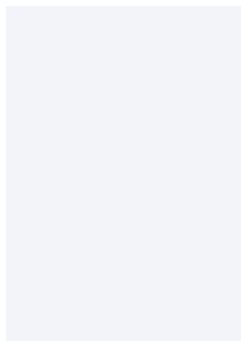
**Weight:** 24lbs (10.9kg) / 29lbs (13.2kg)

**Warranty:** 10 years

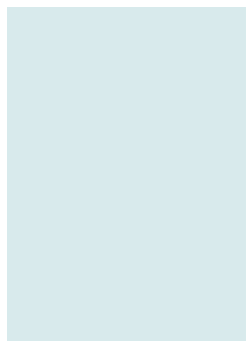
**Format:** Wall Panel



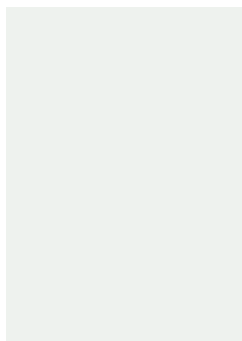
**Cesco**  
W136/53 W137/53



**Ice**  
W136/44 W137/44



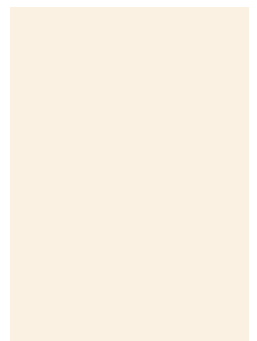
**Mint**  
W136/203 W137/203



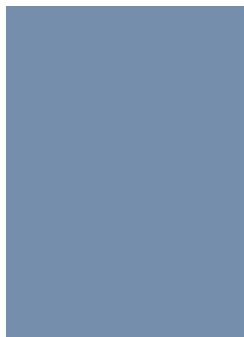
**Seafoam**  
W136/43 W137/43



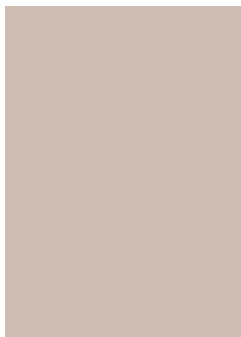
**Pebble**  
W136/200 W137/200



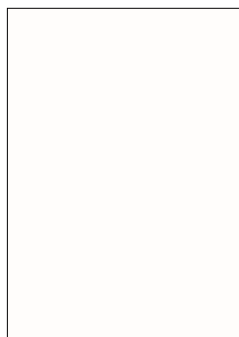
**Oyster**  
W136/32 W137/32



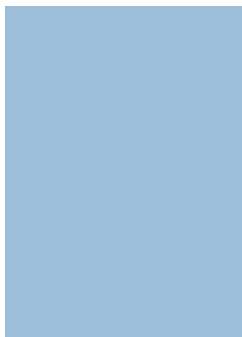
**Flint**  
W136/201 W137/201



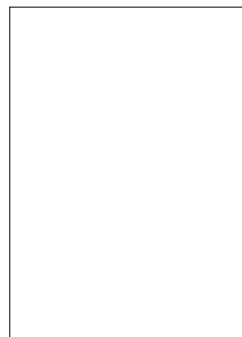
**Fawn**  
W136/206 W137/206



**Linen**  
W136/41 W137/41



**Vista**  
W136/202 W137/202



**Standard White**  
W103 W104

# Altro Whiterock Chameleon

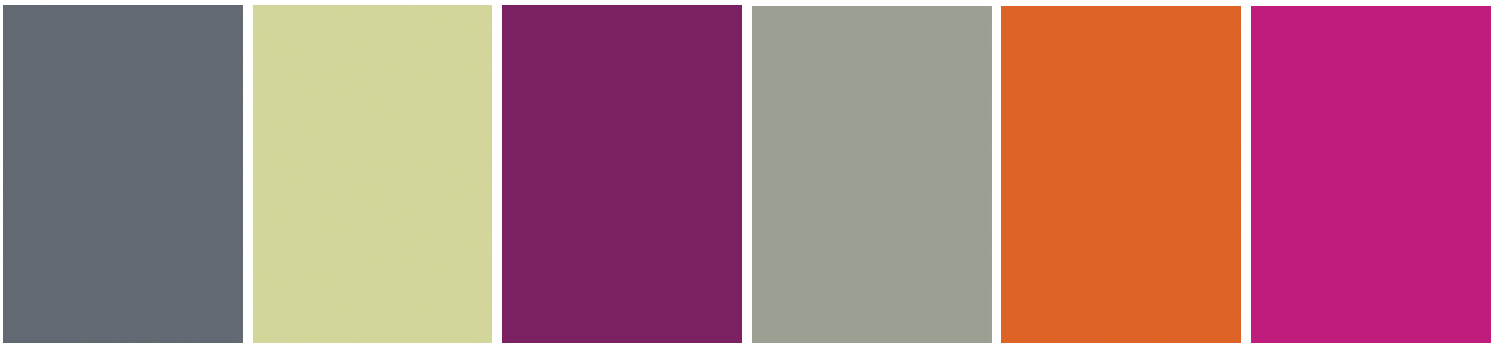
## Designer Wall Systems



**Altro Whiterock Chameleon™** is an economic designer wall option for front of the house areas. It provides a high gloss smooth surface that can be used as an accent to an existing wall, or as a primary wall. Altro Whiterock Chameleon is highly durable, and provides a water-tight, seamless, wipe clean, smooth surface that can withstand high traffic public areas.

- Maintenance Free
- Extremely Durable
- On-Site Heat Formable
- No Constant Repainting

**Panel Sizes:** 4' x 8.2' (1.22m x 2.5m)  
 4' x 9.8' (1.22m x 3.0m)  
**Thickness:** 0.10" (2.5mm)  
**Weight:** 24lbs (10.4kg) / 29lbs (12.7kg)  
**Warranty:** 10 years  
**Format:** Wall Panel



**Distant Thunder**  
 W160/6634 W161/6634

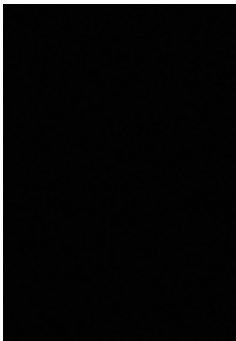
**Eau De Chic**  
 W160/6605 W161/6605

**Feng Shui**  
 W160/6617 W161/6617

**Ice Queen**  
 W160/6629 W161/6629

**Juicy Lucy**  
 W160/6620 W161/6620

**Shocking Pink**  
 W160/6616 W161/6616



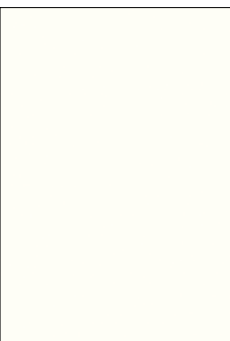
**Liquorice**  
 W160/6612 W161/6612



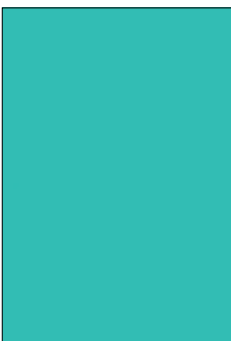
**Moulin Rouge**  
 W160/6618 W161/6618



**Night Fall**  
 W160/6622 W161/6622



**Pure Innocence**  
 W160/6601 W161/6601



**Sheer Glass**  
 W160/6609 W161/6609



**Slip Stream**  
 W160/6611 W161/6611

# Technical Information

Altro has developed special detailing techniques to ensure installation success. For comprehensive technical information, contact your local Altro representative or call **800.377.5597** in the United States or **800.565.4658** in Canada.

Altro offers a complete floor and wall system for areas where cleanability, hygiene, waterproof sealing and safety are essential.

Altro Whiterock hygienic wall system combined with Altro safety flooring, delivers an impervious solution with integrated drainage and heat formed corners for a continuous surface.

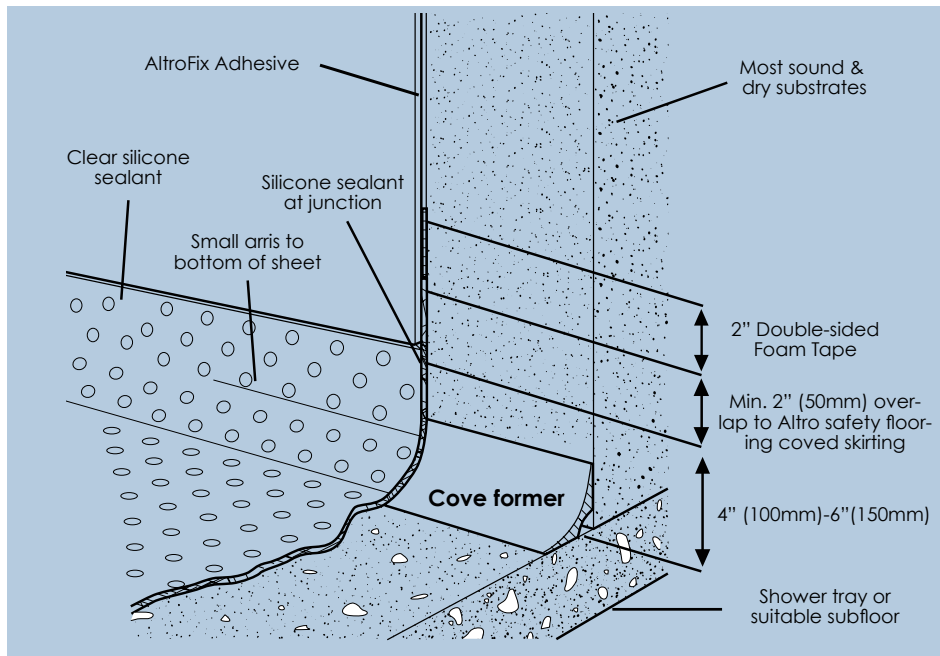
## The system provides:

- No grout or cracked tile
- Minimal maintenance requirements
- Excellent stain resistance and cleanability
- An integral bacteriostat
- Safety underfoot

Whiterock is a durable, water-tight, virtually seamless, smooth PVC wall system, designed specifically for building environments that are required to meet strict hygienic standards. The hygienic and performance benefits of Altro Whiterock make it a perfect partner for the Altro safety flooring range - also known for its hygienic properties.

## floor and wall systems installation & architectural detailing

### Safety Flooring & Whiterock Wall System Diagram



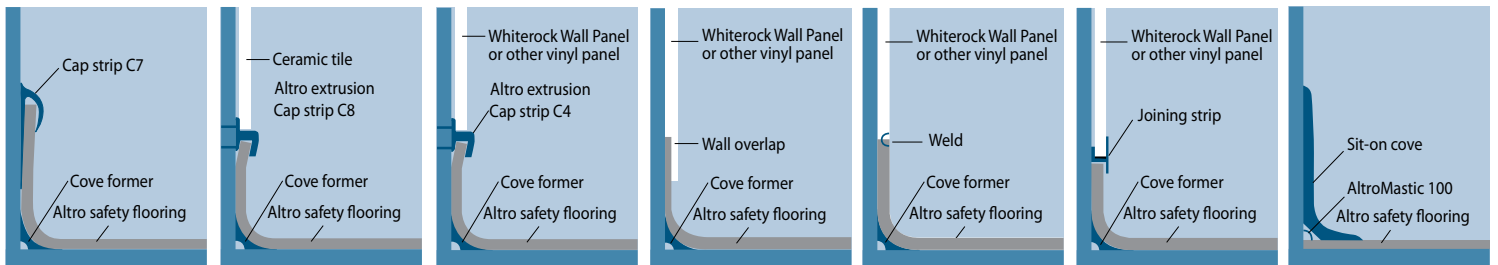
## Altro Weldrod™

To ensure a floor finish conforming to the highest standards of safety and hygiene, joints and miters should always be cut-in, grooved, and heat welded with Altro Weldrod. Available in a wide range of colors, Altro Weldrod can either match the flooring or be used in contrast for a decorative effect.

## AltroMastic™ 100

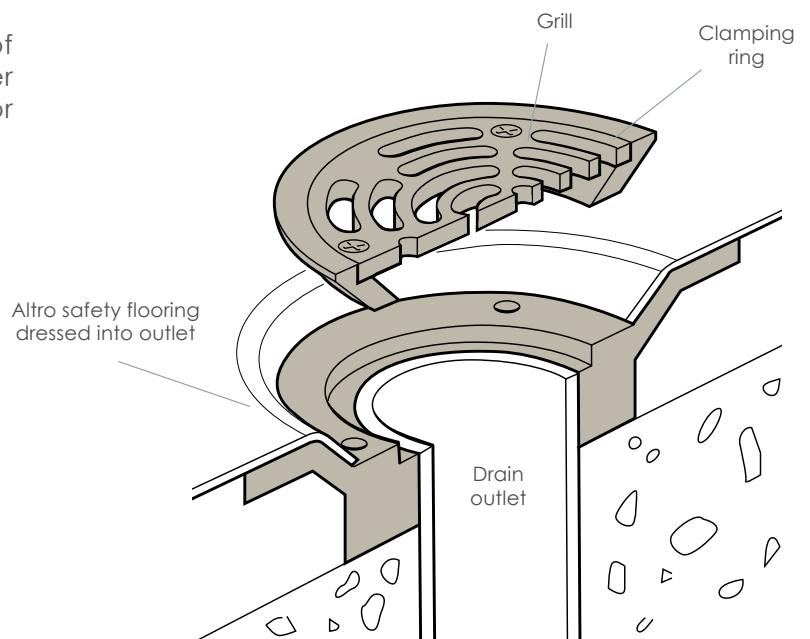
AltroMastic 100 is a specially-formulated sealing compound for use where the flooring abuts skirtings and wall surfaces or around pipes, upstands and door frames. It is available in a range of colors to match the flooring or available as clear.

## Detailing Techniques



## Seamless Drain Solution

Altro safety flooring provides a waterproof membrane to protect subfloors from water damage. The high quality materials allow for a complete coving around drains.



# Enhancing the Safety of our Environment

## Our Commitment

As a global leader in safety flooring, Altro is committed to protecting the environment.

We are dedicated to ensuring that our products and processes minimize environmental impact at every stage, and provide positive benefits to society.

We believe that what is essential for the secure future of our planet is essential for the secure future of today's businesses.

## Our Products

We continually improve our products to reduce their impact on the environment. Our Altro Maxis™ and Easyclean Technology™ provide a green cleaning solution that significantly reduces the need for harsh cleaning products to maintain floors.

We are the first manufacturer with the capability to recycle traditional safety flooring with our in-house recycling system. We have reduced clean water consumption by 99% over the last 10 years and we recycle 100% of our production waste into new safety flooring products.

All of our safety flooring products are FloorScore® certified and contain either pre-consumer or post-consumer recycled content.

## Altro On Sustainability

THE SUNDAY TIMES



BEST GREEN COMPANIES  
2009





# LEED® Score Card

Altro products may contribute to or comply with LEED® credits

## LEED New Construction 2009 & Commercial Interiors 2009 Rating System

- MR 4 – Recycled Content – 10%
- MR 4 – Recycled Content – 20%
- IEQ 4.1 – Low Emitting Materials - Adhesives and Sealants – SCAQMD Rule #1168
- IEQ 4.3 – Low Emitting Materials - Flooring Systems - Option 1 FloorScore Certified and/or Option 2 \*California IEQ Standard
- ID 1 – \*\* IEQ Credit 3.2 Green Cleaning - High Performance Cleaning Program

## LEED 2009 for Existing Buildings: Operations & Maintenance

- MR 3 – Sustainable Purchasing – Recycled Material – SCAQMD – FloorScore
- IEQ prerequisite 3: Green Cleaning Policy – Purchase Sustainable Hard Floor Care Products
- IEQ Credit 3.1: Green Cleaning – High Performance Cleaning Program – Use Sustainable Hard Floor Care Products
- IEQ Credit 3.3: Green Cleaning – Purchase of Sustainable Cleaning Products and Materials

## LEED 2009 Retail – Commercial Interiors

- MR 4 – Recycled Content 10%
- MR 4 – Recycled Content 20%
- IEQ 4.1 Low Emitting Materials - Adhesives and Sealants – SCAQMD Rule #1168
- IEQ 4.3 – Low Emitting Materials - Flooring Systems - Option 1 FloorScore Certified and/or Option 2
- ID 1 – \*\* IEQ Credit 3.1: Green Cleaning - High Performance Cleaning Program

## LEED 2009 Retail – New Construction

- MR 4 – Recycled Content 10%
- MR 4 – Recycled Content 20%
- IEQ 4 Option A - Low Emitting Materials – Adhesives & Sealants
- IEQ 4 Option C Low Emitting Materials - Flooring Systems – Option 1
- ID 1 – \*\* IEQ Credit 3.1: Green Cleaning - High Performance Cleaning Program

## LEED 2009 for Schools New Construction & Major Renovations

- MR 4 – Recycled Content – 10%
- MR 4 – Recycled Content – 20%
- IEQ 4.1 – Adhesives and Sealants - California Department of Health Services Standard Practice (VOC)
- IEQ 4.3 – Low Emitting Materials – Flooring Systems - FloorScore Certified and/or California IEQ Standard
- IEQ 4.6 – Low VOC Emitting Ceiling & Wall Systems
- ID 1 – \*\* IEQ Credit 3.1: Green Cleaning – High Performance Cleaning Program

## Other Environmental Attributes

- ISO 14001 – Environmental Manufacturing Standard
- First Manufacturer to Install In-House Safety Flooring Recycling System
- We Send 0% Waste to Landfill
- Our Products Do Not Contain DEHP
- Altro Safety Flooring uses Recycled Packaging
- Traditional Altro Safety Flooring is Phthalate Free
- Member of USGBC and CAGBC
- The First and Only Manufacturer with BREEAM A-rated Safety Flooring Products in the Market
- All Altro Safety Flooring Products are FloorScore Certified
- Rated 4th Greenest Manufacturer in Britain by Sunday Times

\*California Department of Health Services standard practice for the testing of volatile organic emissions from various sources using small-scale environmental chambers, including 2004 addenda (formerly referred to as CA 1350).

\*\*Formerly referred to as LEED EB 2.0 IEQ 10.3 Green Cleaning. This credit has consistently been borrowed and successfully integrated into other rating systems and has been awarded innovation points for doing so.

# Product Application Chart

## SEGMENTS

### APPLICATION EXAMPLES

TERMS OF USE

- EXCELLENT
- GOOD
- SPECIALTY

### MAXIS CLEANING TECHNOLOGY COLLECTION

Maxis

Suprema II

Timbersafe II

### ESSENTIAL SAFETY COLLECTION

Walkway 20 / SD\*

Impressionist II

Marine 20

Designer 25

Stronghold 30

Atlas 40

Cordiale

### COMMERCIAL COLLECTION

Ethos

CS Line

Dolce

Quartz Tile

### WALL PANELS

Altro Whiterock

Altro Whiterock Chameleon

	Healthcare/ Medical	Hospitality/ Food Prep/ Kitchens	Industrial	Retail	Offices	Wet Areas
<b>APPLICATION EXAMPLES</b>	Operating Rooms Patient Treatment/ Recovery Rooms Pharmacy Areas Waiting Rooms Geriatric Wards Histology Labs Autopsy Rooms/ Mortuaries Laboratories Veterinary Clinics	Food Preparation Areas Foodservice Areas Food Storage Kitchens Bakeries Bar Serveries - Dry Bar Serveries - Wet	Food Processing Chemical Processing Electronic Assembly Areas Machine Shops Pharmaceutical Labs	Art Galleries/ Museums Storerooms Supermarkets Boutiques Retail Stores	Caféterias Circulation Areas Clean Rooms Computer Rooms Corridors Electronic Assembly Areas Print Rooms	Bathrooms Areas of Frequent Spillage Hydrotherapy Pools/ Whirlpools Showers/Shower Areas Swimming Pool Decks Wet Chemical Areas
	E G S	E G S	E G S	E G S	E G S	E G S
<b>MAXIS CLEANING TECHNOLOGY COLLECTION</b>						
Maxis	<input checked="" type="checkbox"/> <input checked="" type="checkbox"/> <input type="checkbox"/>	<input checked="" type="checkbox"/> <input checked="" type="checkbox"/> <input type="checkbox"/>	<input checked="" type="checkbox"/> <input checked="" type="checkbox"/> <input type="checkbox"/>	<input checked="" type="checkbox"/> <input checked="" type="checkbox"/> <input type="checkbox"/>	<input checked="" type="checkbox"/> <input checked="" type="checkbox"/> <input type="checkbox"/>	<input checked="" type="checkbox"/> <input checked="" type="checkbox"/> <input type="checkbox"/>
Suprema II	<input checked="" type="checkbox"/> <input checked="" type="checkbox"/> <input type="checkbox"/>	<input type="checkbox"/> <input checked="" type="checkbox"/> <input type="checkbox"/>	<input type="checkbox"/> <input checked="" type="checkbox"/> <input type="checkbox"/>	<input checked="" type="checkbox"/> <input checked="" type="checkbox"/> <input type="checkbox"/>	<input checked="" type="checkbox"/> <input checked="" type="checkbox"/> <input type="checkbox"/>	<input type="checkbox"/> <input checked="" type="checkbox"/> <input type="checkbox"/>
Timbersafe II	<input checked="" type="checkbox"/> <input checked="" type="checkbox"/> <input type="checkbox"/>	<input type="checkbox"/> <input checked="" type="checkbox"/> <input type="checkbox"/>	<input type="checkbox"/> <input type="checkbox"/> <input type="checkbox"/>	<input checked="" type="checkbox"/> <input checked="" type="checkbox"/> <input type="checkbox"/>	<input checked="" type="checkbox"/> <input checked="" type="checkbox"/> <input type="checkbox"/>	<input type="checkbox"/> <input checked="" type="checkbox"/> <input type="checkbox"/>
<b>ESSENTIAL SAFETY COLLECTION</b>						
Walkway 20 / SD*	<input type="checkbox"/> <input checked="" type="checkbox"/> <input checked="" type="checkbox"/>	<input type="checkbox"/> <input checked="" type="checkbox"/> <input type="checkbox"/>	<input checked="" type="checkbox"/> <input checked="" type="checkbox"/> <input checked="" type="checkbox"/>	<input type="checkbox"/> <input checked="" type="checkbox"/> <input type="checkbox"/>	<input checked="" type="checkbox"/> <input checked="" type="checkbox"/> <input checked="" type="checkbox"/>	<input type="checkbox"/> <input checked="" type="checkbox"/> <input type="checkbox"/>
Impressionist II	<input type="checkbox"/> <input checked="" type="checkbox"/> <input type="checkbox"/>	<input type="checkbox"/> <input checked="" type="checkbox"/> <input type="checkbox"/>	<input type="checkbox"/> <input checked="" type="checkbox"/> <input type="checkbox"/>	<input type="checkbox"/> <input checked="" type="checkbox"/> <input type="checkbox"/>	<input type="checkbox"/> <input checked="" type="checkbox"/> <input type="checkbox"/>	<input type="checkbox"/> <input checked="" type="checkbox"/> <input type="checkbox"/>
Marine 20	<input type="checkbox"/> <input type="checkbox"/> <input type="checkbox"/>	<input type="checkbox"/> <input type="checkbox"/> <input type="checkbox"/>	<input type="checkbox"/> <input type="checkbox"/> <input type="checkbox"/>	<input type="checkbox"/> <input type="checkbox"/> <input type="checkbox"/>	<input type="checkbox"/> <input type="checkbox"/> <input type="checkbox"/>	<input checked="" type="checkbox"/> <input checked="" type="checkbox"/> <input checked="" type="checkbox"/>
Designer 25	<input checked="" type="checkbox"/> <input checked="" type="checkbox"/> <input type="checkbox"/>	<input checked="" type="checkbox"/> <input checked="" type="checkbox"/> <input type="checkbox"/>	<input checked="" type="checkbox"/> <input checked="" type="checkbox"/> <input type="checkbox"/>	<input checked="" type="checkbox"/> <input checked="" type="checkbox"/> <input type="checkbox"/>	<input checked="" type="checkbox"/> <input checked="" type="checkbox"/> <input type="checkbox"/>	<input checked="" type="checkbox"/> <input checked="" type="checkbox"/> <input type="checkbox"/>
Stronghold 30	<input checked="" type="checkbox"/> <input checked="" type="checkbox"/> <input type="checkbox"/>	<input checked="" type="checkbox"/> <input checked="" type="checkbox"/> <input type="checkbox"/>	<input checked="" type="checkbox"/> <input type="checkbox"/> <input type="checkbox"/>	<input type="checkbox"/> <input type="checkbox"/> <input type="checkbox"/>	<input type="checkbox"/> <input type="checkbox"/> <input type="checkbox"/>	<input type="checkbox"/> <input type="checkbox"/> <input type="checkbox"/>
Atlas 40	<input checked="" type="checkbox"/> <input checked="" type="checkbox"/> <input type="checkbox"/>	<input checked="" type="checkbox"/> <input checked="" type="checkbox"/> <input type="checkbox"/>	<input checked="" type="checkbox"/> <input type="checkbox"/> <input type="checkbox"/>	<input type="checkbox"/> <input type="checkbox"/> <input type="checkbox"/>	<input checked="" type="checkbox"/> <input checked="" type="checkbox"/> <input type="checkbox"/>	<input type="checkbox"/> <input type="checkbox"/> <input type="checkbox"/>
Cordiale	<input type="checkbox"/> <input checked="" type="checkbox"/> <input type="checkbox"/>	<input type="checkbox"/> <input type="checkbox"/> <input type="checkbox"/>	<input type="checkbox"/> <input checked="" type="checkbox"/> <input type="checkbox"/>	<input type="checkbox"/> <input type="checkbox"/> <input type="checkbox"/>	<input type="checkbox"/> <input checked="" type="checkbox"/> <input type="checkbox"/>	<input type="checkbox"/> <input checked="" type="checkbox"/> <input type="checkbox"/>
<b>COMMERCIAL COLLECTION</b>						
Ethos	<input type="checkbox"/> <input checked="" type="checkbox"/> <input type="checkbox"/>	<input type="checkbox"/> <input type="checkbox"/> <input type="checkbox"/>	<input type="checkbox"/> <input checked="" type="checkbox"/> <input type="checkbox"/>	<input type="checkbox"/> <input checked="" type="checkbox"/> <input type="checkbox"/>	<input type="checkbox"/> <input checked="" type="checkbox"/> <input type="checkbox"/>	<input type="checkbox"/> <input type="checkbox"/> <input type="checkbox"/>
CS Line	<input checked="" type="checkbox"/> <input checked="" type="checkbox"/> <input checked="" type="checkbox"/>	<input type="checkbox"/> <input type="checkbox"/> <input checked="" type="checkbox"/>	<input type="checkbox"/> <input type="checkbox"/> <input type="checkbox"/>	<input checked="" type="checkbox"/> <input checked="" type="checkbox"/> <input checked="" type="checkbox"/>	<input type="checkbox"/> <input checked="" type="checkbox"/> <input checked="" type="checkbox"/>	<input type="checkbox"/> <input type="checkbox"/> <input type="checkbox"/>
Dolce	<input checked="" type="checkbox"/> <input checked="" type="checkbox"/> <input type="checkbox"/>	<input type="checkbox"/> <input type="checkbox"/> <input type="checkbox"/>	<input type="checkbox"/> <input checked="" type="checkbox"/> <input type="checkbox"/>	<input checked="" type="checkbox"/> <input checked="" type="checkbox"/> <input type="checkbox"/>	<input checked="" type="checkbox"/> <input checked="" type="checkbox"/> <input type="checkbox"/>	<input type="checkbox"/> <input type="checkbox"/> <input type="checkbox"/>
Quartz Tile	<input checked="" type="checkbox"/> <input checked="" type="checkbox"/> <input type="checkbox"/>	<input type="checkbox"/> <input type="checkbox"/> <input type="checkbox"/>	<input checked="" type="checkbox"/> <input checked="" type="checkbox"/> <input type="checkbox"/>	<input checked="" type="checkbox"/> <input checked="" type="checkbox"/> <input type="checkbox"/>	<input checked="" type="checkbox"/> <input checked="" type="checkbox"/> <input type="checkbox"/>	<input type="checkbox"/> <input type="checkbox"/> <input type="checkbox"/>
<b>WALL PANELS</b>						
Altro Whiterock	<input checked="" type="checkbox"/> <input checked="" type="checkbox"/> <input checked="" type="checkbox"/>	<input checked="" type="checkbox"/> <input checked="" type="checkbox"/> <input checked="" type="checkbox"/>	<input checked="" type="checkbox"/> <input checked="" type="checkbox"/> <input checked="" type="checkbox"/>	<input type="checkbox"/> <input type="checkbox"/> <input type="checkbox"/>	<input type="checkbox"/> <input type="checkbox"/> <input type="checkbox"/>	<input checked="" type="checkbox"/> <input checked="" type="checkbox"/> <input type="checkbox"/>
Altro Whiterock Chameleon	<input checked="" type="checkbox"/> <input checked="" type="checkbox"/> <input checked="" type="checkbox"/>	<input checked="" type="checkbox"/> <input checked="" type="checkbox"/> <input checked="" type="checkbox"/>	<input checked="" type="checkbox"/> <input checked="" type="checkbox"/> <input checked="" type="checkbox"/>	<input type="checkbox"/> <input type="checkbox"/> <input type="checkbox"/>	<input type="checkbox"/> <input type="checkbox"/> <input type="checkbox"/>	<input checked="" type="checkbox"/> <input checked="" type="checkbox"/> <input type="checkbox"/>

\*Specialty Category Designed for Static Dissipative Category

This chart is for general reference only. Please call your Altro representative for specific application information.

## General Areas

Stairs  
Walkways  
Ramps  
Laundry Rooms  
Entrances  
Caféterias

E G S

E G   
 G   
 G

G S\*   
 G   
    
E G   
    
E G   
 G

E G   
E G S  
E G   
E G

S  
  S

Format	Thickness	Width	Length	Weight	Roll Weight/Box Weight	Warranty	Slip Resistance	Ease of Cleaning	Chemical Resistance	Sound Absorption	Wear Characteristics
Roll	0.10" (2.5 mm)	6' 7" (2.0 m)	66' (20 m)	5.7 lbs / yd <sup>2</sup> (3.1 kg / m <sup>2</sup> )	273 lbs (124 kg)	12 years	E	E	E	E	E
Roll	0.08" (2.0 mm)	6' 7" (2.0 m)	66' (20 m)	4.6 lbs / yd <sup>2</sup> (2.5 kg / m <sup>2</sup> )	229 lbs (104 kg)	7 years	G	E	E	G	G
Roll	0.08" (2.0 mm)	6' 7" (2.0 m)	84' (25.64 m)	4.8 lbs / yd <sup>2</sup> (2.6 kg / m <sup>2</sup> )	236 lbs (107 kg)	7 years	E	E	E	G	G
Roll	0.08" (2.0 mm)	6' 7" (2.0 m)	66' (20 m)	4.8 lbs / yd <sup>2</sup> (2.6 kg / m <sup>2</sup> )	205 lbs (93 kg)	10 years	E	G	E	G	G
Roll	0.08" (2.0 mm)	6' 7" (2.0 m)	66' (20 m)	4.6 lbs / yd <sup>2</sup> (2.5 kg / m <sup>2</sup> )	200 lbs (91 kg)	10 years	E	G	E	G	G
Roll	0.08" (2.0 mm)	6' 7" (2.0 m)	66' (20 m)	4.8 lbs / yd <sup>2</sup> (2.6 kg / m <sup>2</sup> )	218 lbs (99 kg)	7 years	E	G	E	G	G
Roll	0.10" (2.5 mm)	6' 7" (2.0 m)	66' (20 m)	5.9 lbs / yd <sup>2</sup> (3.2 kg / m <sup>2</sup> )	260 lbs (117.5 kg)	12 years	E	G	E	E	E
Roll	0.12" (3.0 mm)	6' 7" (2.0 m)	49' (15 m)	6.3 lbs / yd <sup>2</sup> (3.4 kg / m <sup>2</sup> )	227 lbs (103 kg)	10 years	E	G	E	E	E
Roll	0.16" (4.0 mm)	6' 7" (2.0 m)	41' (12.5 m)	8.2 lbs / yd <sup>2</sup> (4.5 kg / m <sup>2</sup> )	252 lbs (114.5 kg)	15 years	E	G	E	E	E
Roll	0.08" (2.0 mm)	6' 7" (2.0 m)	66' (20 m)	5.0 lbs / yd <sup>2</sup> (2.7 kg / m <sup>2</sup> )	275 lbs (125 kg)	5 years	G	G	E	G	G
Roll	0.08" (2.0 mm)	6' (1.83 m)	59' (18 m)	5.5 lbs / yd <sup>2</sup> (3.0 kg / m <sup>2</sup> )	213 lbs (96.5 kg)	10 years	G	E	E	G	E
Roll	0.08" (2.0 mm)	4' 9" (1.45 m)	82' (25 m)	5.9 lbs / yd <sup>2</sup> (3.2 kg / m <sup>2</sup> )	256 lbs (116 kg)	10 years	G	E	G	G	E
Tile	0.12" (3.0 mm)	18" (457.2 mm)	18" (457.2 mm)	2.8 lbs / tile (1.3 kg / tile)	44.35 lbs (20.12 kg)	10 years	G	E	E	G	E
Tile	0.08" (2.0 mm)	24" (610 mm)	24" (610 mm)	3.2 lbs / tile (1.4 kg / tile)	39.33 lbs (17.84 kg)	15 years	G	E	G	G	E
Panel	0.10" (2.5 mm)	4' (1.22 m)	8' / 10' (2.44 m)/(3.05 m)	24 lbs / 29 lbs (10.9 kg) / (13.2 kg)	NA	10 years	NA	E	E	G	E
Panel	0.10" (2.5 mm)	4' (1.22 m)	8.2' / 9.8' (2.5 m)/(3 m)	24 lbs / 29 lbs (10.4 kg) / (12.7 kg)	NA	10 years	NA	E	E	G	E

G Good

E Excellent



altro

the future is safer with altro



Product Development



Recycling



Carbon Footprint



Energy Savings



Waste Reduction



Social Responsibility

USA: 80 Industrial Way, Wilmington, MA 01887  
Canada: 6390 Kestrel Road, Mississauga, ON L5T 1Z3

T: 800.377.5597  
T: 800.565.4658

F: 610.746.4325  
F: 905.564.0750

explore [www.altrofloors.com](http://www.altrofloors.com)

E: [info@altrofloors.com](mailto:info@altrofloors.com)

Altro and  are either registered trademarks of Altro Limited in the United States and/or other countries. All others are either registered trademarks or trademarks of their respective organizations or corporations. © Copyright Altro 2010



Mixed Sources  
Product group from well-managed  
forests, controlled sources and  
recycled wood or fiber

Cert no. SW-COC-001795  
[www.fsc.org](http://www.fsc.org)  
© 1996 Forest Stewardship Council

RCM\_05/2010