

Service Bulletin

SB00047 Rev A

Recommended Spare Parts for Microseparator® HC6 Coolant System 460V 60Hz

Approvals

Service	Randy Stockman		3/21/2016
Manufacturing	Christopher C. Bazell		3/21/2016
	<i>Name</i>	<i>Signature</i>	<i>Date</i>

Bazell Technologies recommends that HC6 owners stock a set of essential spares. This list of spare parts is divided into three groups: Main System, Centrifuges, and Pump Stations. Bazell will prepare a separate price quote upon request.

Please double check voltage and frequency when ordering pumps or motors – various configurations and certifications are available.

To request a quote, or to order replacement parts, please contact Bazell Technologies by emailing info@bazell.com, or by calling +1 925 603 0900.

Ask us about our contract maintenance program – exclusively for HC6 customers!

Centrifuges

Description	P/N – 460/60	Quantity
Drive Belts for CF105G	2100308	3
SMC Solenoid Valve for CF105G	5090001-24VDC	1
Stopper Assembly for CF105G	2100518	1
Flow Sensor for Centrifuge Inlet	521-SI5004	1
Drain Plate Air Cylinder	6140250	1
Socket for Slide Shaft	2100448	1
<i>*Complete Rotor Assembly for CF-105G</i>	<i>2100100</i>	<i>1</i>

Main System

Description	P/N – 460/60	Quantity
Gould Submersible Pump (1.5HP, 460/60/3)	P-2DM51F4NA	1
SJE Rhombus Float Switch, N/O	521-1018842	1
¹ AVC Solenoid Valve	509-D2003ACWR-DB7	1
¹ IFM 4-Wire Cable for All Quick Disconnects	513-EVC019	1
Pressure Transmitter for Clean Coolant Supply	529-62810GHP1E6S1	1
Defoamer Metering Pump	P-HRP54V-2P2	1
<i>*Gusher Clean Coolant Supply Pump (7.5HP, SS)</i>	<i>P-11019ASE-B 7.5</i>	<i>1</i>

Pump Stations

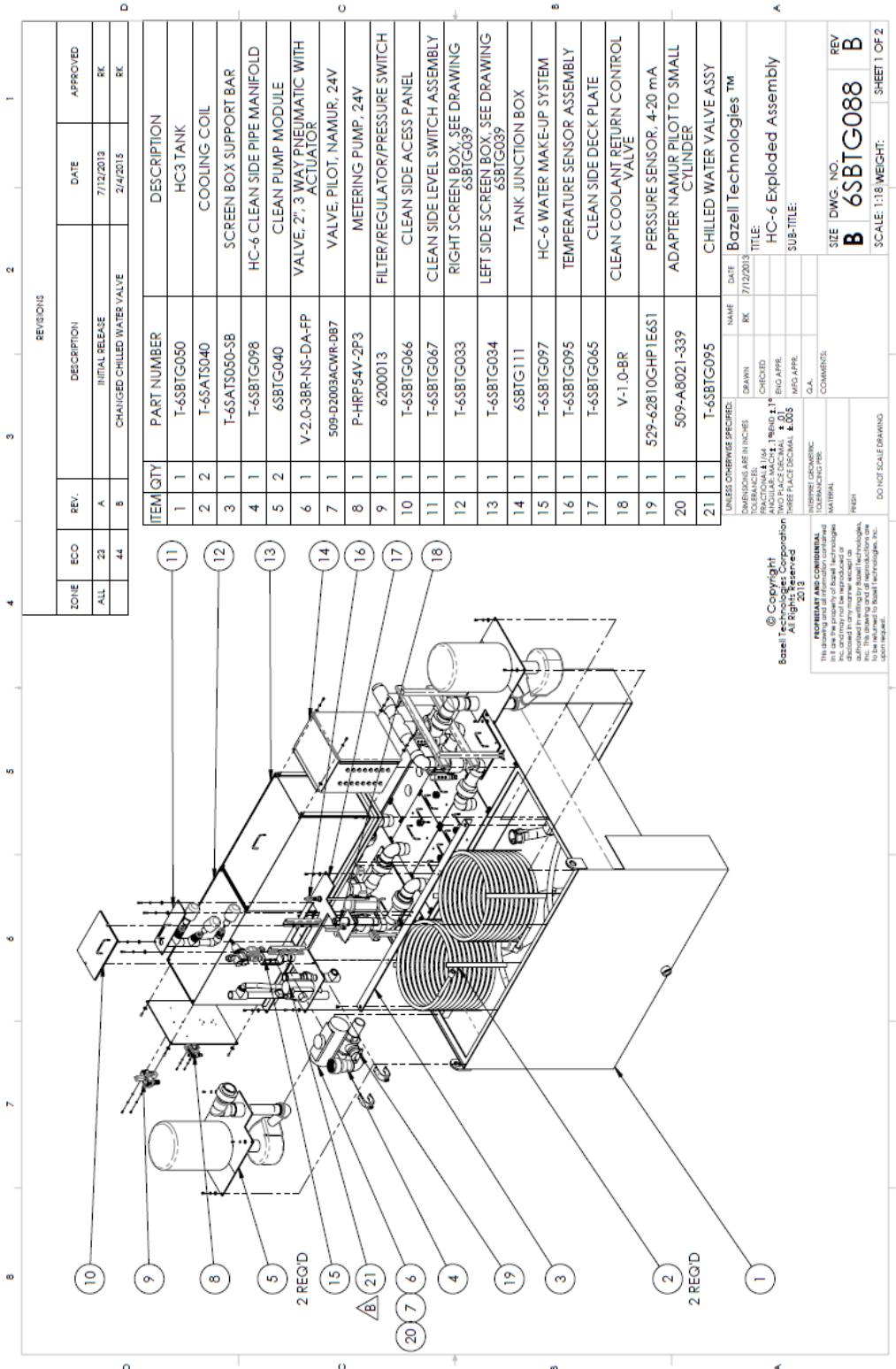
Description	P/N – 208/60	Quantity
Gould Submersible Pump (1.5HP, 230/60/3)	P-2DV51F	1
¹ RUB Valve, 1" Brass (Also for CF Inlet Manifold)	V-1.0-BR-NS-AOSC	1
GF Valve, 2" PVC	V-2.0-PVC-FP	1
IFM Level Switch, 5" Probe (Dirty Side)	521-LI5141	1
IFM Level Switch, 11" Probe (Clean Side)	521-LI5142	1
Mead Solenoid Valve, 1 or 2" Valve Actuators	509-M3V1-06-24VDC	1

**Item not available for next day delivery. Lead time 4-6 weeks.*

¹Item used on multiple system components.

Main Tank – Clean Side Exploded View

May be found on page 40 of your Operations and Maintenance Manual.



Main Tank – Dirty Side Exploded View

May be found on page 41 of your Operations and Maintenance Manual.

ITEM/ QTY	PART NUMBER	DESCRIPTION
1 1	T-6SBTG042	LEFT SIDE DIRTY PLATE
2 2	T-6SBTG047	DIRTY MANIFOLD SUPPORT
3 2	T-6SBTG048	DIRTY SIDE VIEWING WINDOW VALVE, 2" FULL PORT WITH DOUBLE ACTING ACTUATOR
4 4	V-2.0-BR-NS-AOAC-F	NAMUR PILOT VALVE
5 4	509-D2003ACWR-DB7	CF DRAIN DECK PLATE
6 1	T-6SBTG061	DIRTY PUMP MODULE
7 1	T-6SBTG019	DIRTY SIDE LEVEL SWITCH ASSY
8 1	T-6SBTG085	DS LVL SWITCH MOUNTING PLATE
9 1	T-6SBTG069	DIRTY SIDE SUPPORT BAR
10 1	T-6SBTG050-DSS	RIGHT SIDE DIRTY PLATE
11 1	T-6SBTG045	

UNLESS OTHERWISE SPECIFIED:
 DIMENSIONS ARE IN INCHES
 FRACTIONS 1/16
 ANGULAR SLOPE 1:1
 TOLERANCES UNLESS OTHERWISE SPECIFIED:
 HOLE POSITION ±0.005
 HOLE SIZE ±0.005
 FINISH UNLESS OTHERWISE SPECIFIED:
 MATERIAL UNLESS OTHERWISE SPECIFIED:
 COMMENTS

PROPRIETARY AND CONFIDENTIAL
 This document contains information that is the property of Bazel Technologies Inc. and may not be reproduced or distributed in any form without the written permission of Bazel Technologies Inc. For an authorized reproduction, contact Bazel Technologies Inc. upon request.

© Copyright 2013 Bazel Technologies Inc. All Rights Reserved.
 TITLE: HC-6 Exploded Assembly
 SUB-TITLE:
 DATE: 7/12/2013
 NAME: BK
 DRAWN: CHECKED: ENG APPR: HSD APPR: O.A. COMMENTS:

SIZE DWG. NO. REV
B 6SBTG088 B

SCALE: 1:18 WEIGHT: SHEET 2 OF 2

Drawing 58111000 Parts List

ITEM	QTY	PART NO.	DESCRIPTION	MATERIAL
1	1	6140250-SS	Air Cylinder	SMC 40 X 250
2	1	2100709	Access Cover	304 SS
3	1	2100121	Motor Pulley	Cast Iron
3A	1	3080740	Key	Steel
4	1	5110080	Drive Motor	3 HP
6	1	2100400	Scraper Drive Assembly	
7	1	5080004	Limit Switch WLAC2	Omron
9	1	6150025	Air Cylinder	SMC 50 X 25
10	1	2150705-RS-24	Vibration Switch	ROBERTSHAW
11	1	5111149	Gear Motor	See Below*
12	1	2100421	Sprocket	Steel
12A	1	3100840	Key	Steel
13	1	5080004	Limit Switch WLAC2	Omron
14	1	2100518	Stopper Assembly	304 SS/Steel
15	1	2100706	Gasket	BUNA
16	1	2100705	Upper Frame Assembly	304 SS
17	1	2100100	Rotor Assembly	
18	1	2100764	Access Cover	304 SS
19	1	2100765	Drain Plate	304 SS
20	8	2100703	Vibration Dampner	Rubber
21	1	2100762	Lower Frame Assembly	Steel