

Phaser®  
7800  
Tabloid-size  
Color  
Printer



# Xerox® Phaser® 7800 Color Printer

The graphic arts  
gold standard.



# Xerox® Phaser® 7800 Color Printer

**Unmatched color printing. Industry-leading media flexibility. Professional color management technologies.** These are the benchmarks of the Phaser 7800 – the only tabloid-size color printer in its class that delivers the full complement of advanced capabilities today’s most graphic-intensive environments require. Now any business that produces large volumes of high-resolution output, such as advertising agencies, graphic design shops, marketing communications firms, photography studios and countless others, can keep more of their business-critical print jobs in-house thanks to the Phaser 7800 color printer’s unbeatable state-of-the-art technologies.





## Print shop-quality color, without the print shop.

**If your work demands the best-possible color print quality, the Phaser 7800 color printer is the obvious choice.** With the winning combination of consistently superior image quality and professional-level color-matching technologies, no other tabloid-size color printer gives creative professionals the freedom to produce more customer-facing collaterals in-house.

- **True 1200 x 2400 dpi.** The Xerox® Phaser® 7800 color printer delivers a high print resolution that consistently produces realistic images, photos and graphics, plus sharp text and fine-line detail.
- **The colors you expect, with reliable accuracy.** PANTONE® calibrated solid-color simulations and Xerox® Color Correction technology deliver results that always match your expectations, while true Adobe® PostScript® 3™ ensures accuracy you can count on.
- **Seeing is believing.** Impress your clients and potential customers with output that, until now, could only be achieved by outsourcing your work to a professional print shop. The Phaser 7800 produces glossy, vivid colors; rich, deep blacks; and the smoothest color transitions – no streaking, banding or striping.
- **No-compromise color matching.** Xerox® PhaserMatch® 5.0 color management and calibration software, including the Xerox® PhaserMeter® Color Measurement Device powered by X-Rite, adds a professional level of color control and helps maintain color accuracy print after print, and across all output devices.
- **Easy viewing.** Stunning color quality means very little if your audience can't easily understand your messaging. Advanced trapping technology ensures clean edges and prevents gaps between adjacent colors. Plus, black text on colored backgrounds and colored text on black backgrounds always print sharp and clear.
- **Advanced print head technology.** The Phaser 7800 color printer features the Xerox Hi-Q LED print head, which provides better dot-to-dot intensity and timing control, and produces precise color registration.

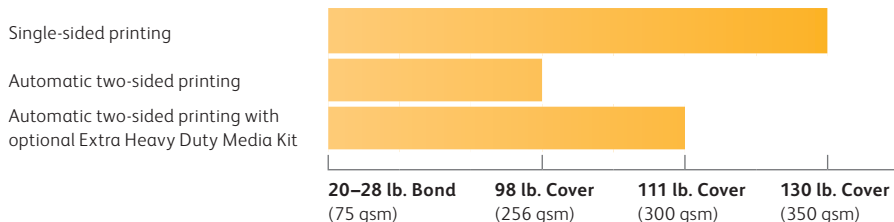


## Media Mastery

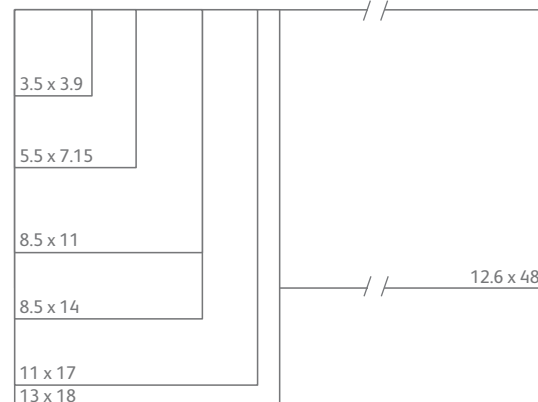
**For designers, photographers, and creative professionals from every industry:**

Now there's virtually no limit to the types of printed materials you can create thanks to the Xerox® Phaser® 7800 color printer's incredible media handling capabilities. From customer-ready brochures and sales proposals, to posters, banners, booklets and business cards, no other device in its class prints such amazing color quality on the widest range of media weights and sizes. Take advantage of weights from 75 to 350 gsm, and sizes from 3.5 x 3.9 inches to 12.6 x 48 inches, and let your creative inspiration take over.

### Media Weight Capabilities



### Media Size Capabilities (in inches)



**350 gsm**

93 lb. Bond, 236 lb. Text, 130 lb. Cover, 215 lb. Tag, 194 lb. Index, 160 lb. Bristol, 350 gsm. However you measure your paper weight, the Phaser 7800 can print on it.



### A Brilliant Shade of Green

The Xerox® Phaser® 7800 color printer includes an impressive lineup of standard features that help your office environment reduce its impact on the natural environment.

- **EA Toner.** Our EA Toner with low-melt technology achieves minimum fusing temperature at 68 degrees F (20 degrees C) less than conventional toner for even more energy savings.
- **Reduced paper consumption.** Save paper and money when you print multipage documents with automatic two-sided output.
- **Hi-Q LED print engine.** Proven Hi-Q LED print engine technology consumes minimal energy and space, and operates quietly.
- **Induction heating fuser.** The heat-efficient IH fuser consumes substantially less power in standby mode than conventional fusers and achieves a start-up time of less than 15 seconds.



## The best color printing, and beyond.

Powerful, industry-leading color matching software allows you to bring additional professional-level graphic-arts and marketing capabilities in-house.

**Xerox® PhaserMatch® 5.0 with Xerox® PhaserMeter® Color Measurement Device powered by X-Rite.** For graphic artists and color professionals, color matching is a critical task. The colors viewed on one's computer monitor must be reproduced with consistent accuracy on printed output, and then reproduced with matching accuracy by every other output device, whether on-site or in remote locations. PhaserMatch 5.0 color management and calibration software is your color-matching assurance.

Standard with the Phaser 7800GX configuration (optional with DN and DX configurations), PhaserMatch 5.0 adds another level of color control and helps maintain color accuracy. It brings stability to the process – delivering

consistent, predictable and reproducible color matching.

Plus, it comes with the PhaserMeter all-in-one Color Measurement Device, which captures colors and helps calibrate your monitors and Phaser 7800 printer.

PhaserMatch 5.0 benefits include:

- Color calibration for accurate, consistent results
- Control over repeatable color – saving time and money
- Greater color accuracy for design visuals and prepress proofs
- Fewer iterations and assurance that digital proofs meet press color expectations



## The peak of productivity.

**Engineered for fast-paced environments with the most demanding expectations,** the Xerox® Phaser® 7800 color printer delivers clearly superior color quality without sacrificing exceptional speed or reliability. Now any business or organization that depends on color – whether selling their products, winning new business, or sharing creative concepts – can produce the most impressive, customer-ready collaterals as fast as they need them.

- **Fast printing.** The Phaser 7800 helps you beat your deadlines, delivering both black-and-white and color output at a speed of up to 45 ppm.
- **A true powerhouse.** With a 1.33 GHz processor, 2 GB of memory and a standard 160 GB hard drive, the Phaser 7800 is designed to handle a steady flow of high-resolution print jobs loaded with colorful images and graphics.
- **Standard duplexing.** Automatic two-sided printing comes standard, providing more flexibility and helping reduce paper consumption. Plus, the Phaser 7800 printer's duplex speed is just as fast as single-side printing, so there's no sacrificing efficiency for conservation. And with the optional Extra Heavy Duty Media Kit you can print two-sided output on standard and custom-size media in weights up to 300 gsm. No other printer in its class handles such a wide variety of heavy stock\*.
- **Long-term durability.** With a duty cycle of up to 225,000 pages per month, we built the Phaser 7800 color printer to withstand constant use and perform at its best for years to come.
- **Total peace of mind.** In the unlikely event that a problem does occur, your Phaser 7800 is covered by a one-year onsite warranty and the Xerox® Total Satisfaction Guarantee.



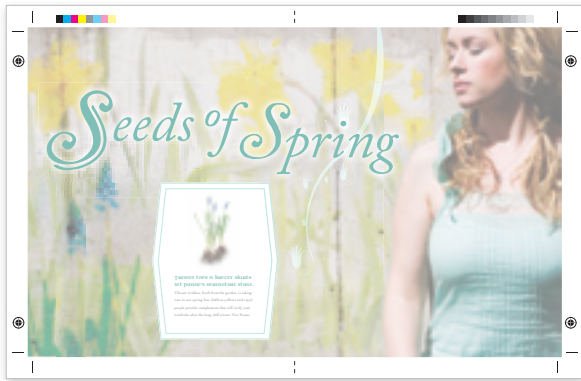
## Emphasis on easy.

**Designed to handle a wide variety of complex color print jobs, there's nothing complex about the Xerox® Phaser® 7800 color printer's usability.** With superior printer management capabilities and innovative, helpful technologies, even those with no experience using advanced color printers will quickly become comfortable with the wealth of useful features offered by the Phaser 7800.

- **Advanced touch screen interface.** The Phaser 7800 features a state-of-the-art 4.3-inch, color touch-screen interface. Its big, bright icons and intuitive menus make walk-up operation faster and easier than ever.
- **Help where you need it.** The Phaser 7800 features embedded help videos for quick, easy, step-by-step troubleshooting assistance right on the color touch screen.
- **Effortless printer management.** Xerox® CentreWare® Internet Services embedded web server helps you save valuable time by simplifying configuration cloning and automatic installation of additional Phaser 7800 color printers. You can also view job status and troubleshoot right from your web browser.
- **Fewer interventions.** Long-life, user-replaceable items, such as the imaging unit and fuser, are easy to access and replace. Plus, they're engineered for maximum longevity so you'll stay more productive, longer.
- **Easy, front-side access.** The Phaser 7800 was designed for total convenience. There's no need to rotate or move the printer to perform routine maintenance like changing toner and adding paper.
- **Bi-directional communication.** The Phaser 7800 sends print-job updates, along with toner and paper supply levels, to your desktop or even over the web. Pop-up alerts immediately notify you of any print problems – and how to fix them.

# More finishing options, greater design flexibility.

The Xerox® Phaser® 7800 color printer gives graphic arts professionals an impressive range of business-ready finishing options to choose from. Depending on your needs and budget, you can go with the all-in-one Professional Finisher and get stacking, stapling, hole punching, booklet making and v-folding; or start with the Office Finisher LX and get stacking and stapling with the flexibility to add separate hole punching, creasing and stapling capabilities as your workload dictates.



Oversize Output for 11 x 17 bleed



Booklet



V-Fold



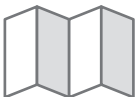
2/3-hole punch



Multiposition stapling

## Xerox Media: Unique media applications for digital color printers.

Complementing our line of robust plain and coated paper portfolios, Xerox specialty media products enable printers to position themselves as innovators, offering unique solutions to their customer's needs, while achieving greater profits. For more information on these and other Xerox Specialty Media, visit us at [www.xerox.com](http://www.xerox.com).



Xerox® AccordionPix™



Xerox® Everflat® Books



Xerox® FunFlip®



Xerox® PhotoPix





1

### Professional Finisher\*

As the name indicates, when you add the Professional Finisher to your Phaser 7800, you'll benefit from a wealth of professional-level document finishing capabilities.

- Stacking: 1,500 sheets plus a 500-sheet top tray
- Stapling: 50-sheet, multi-position
- 2/3-hole punch
- Saddle-stitch-staple booklet making, up to 15 sheets
- V-folding, up to 15 sheets
- Sizes: 7.2 x 7.2 in. to 13 x 18 in.  
(182 x 182 mm to 330.2 x 457.2 mm)

2

### Office Finisher LX\*

If your immediate needs don't require some of the more advanced capabilities offered by the Professional Finisher, consider adding the Office Finisher LX, which lets you add hole punching and/or creasing capabilities as your workload evolves.

- Stacking: 2,000 sheets unstapled, 1,000 sheets single-stapled or 750 sheets dual stapled
- Stapling: 50-sheet, multi-position
- Sizes: 8.5 x 7.2 in. to 11.7 x 17 in.  
(210 x 182 mm to 297 x 432 mm)

3

### Booklet Maker for Office Finisher LX

Add booklet-making capabilities to the Office Finisher LX and create booklets with up to 15 sheets, either creased or saddle-stitched.

- Sizes: 8.5 x 11 in. to 11.7 x 17 in.  
(210 x 279.4 mm to 297 x 432 mm)

## Xerox® Phaser® 7800 Quick Facts

Print

13 x 18 in. / 330 x 457 mm

45 ppm

### WxDxH (DN configuration):

25.3 x 27.5 x 22.8 in.  
641 x 699 x 578 mm



Phaser 7800 with Professional Finisher

\* Finishers require installation of either a 3 Tray Module or High Capacity Tandem Tray

	Xerox® Phaser® 7800DN	Phaser 7800DX	Phaser 7800GX
<b>Speed</b>	Up to 45 ppm color / 45 ppm black-and-white		
<b>Duty Cycle</b>	Up to 225,000 pages / month <sup>1</sup>		
<b>Paper Handling</b> Paper Input	Standard	<b>Tray 1:</b> 100 sheets; Custom sizes: 3.5 x 3.9 in. to 12.6 x 48 in. / 88 x 99 mm to 320 x 1219 mm	
		<b>Tray 2:</b> 520 sheets; Custom sizes: 5.5 x 7.2 in. to 11.7 x 17 in. / 140 x 182 mm to 297 x 432 mm	
	Optional	NA	<b>High Capacity Tandem Tray:</b> 2,520 sheets; Custom sizes: 5.5 x 7.2 in. to 13 x 18 in. / 140 x 182 mm to 330 x 457.2 mm
		<b>3 Tray Module</b>	NA
		<b>High Capacity Tandem Tray</b>	NA
	Total Standard Capacity	620 sheets	3,140 sheets
	<b>Optional Extra Heavy Duty Media Kit:</b> Allows automatic two-sided printing from Tray 1 on media up to 110 lb. cover (300 gsm)		
Finishing Options	Standard	<b>Dual Offset Catch Tray:</b> 250-sheets each	
	Optional	<b>Office Finisher LX<sup>2</sup>:</b> 2,000-sheet staker, 50 sheets stapled, 2-position stapling, optional hole-punch	
		<b>Booklet Maker for Office Finisher LX:</b> Adds booklet making (crease, saddle-stitch) with up to 15 sheets	
		<b>Professional Finisher<sup>2</sup>:</b> Stacking: 1,500-sheet staker and 500-sheet top tray, 50-sheet multiposition stapling and hole punch, saddle-stitch booklet maker, V-Fold	
Automatic Two-sided Printing	Standard		
<b>Print</b>			
First-page-out Time	As fast as 9 seconds color and black-and-white		
Resolution (max)	Enhanced: 1200 x 2400 x 1 dpi / Photo Mode: 600 x 600 x 8 dpi / Standard: 1200 x 600 x 1 dpi		
Processor	1.33 GHz		
Memory/Hard Drive	2 GB / 160 GB minimum		
Connectivity	Ethernet 10/100/1000Base-T, USB 2.0, Optional external wireless 802.11 b, g, n		
Page Description Languages	Adobe® PostScript® 3™, PCL® 6/5c, Adobe PDF-Direct version 1.6		
Print Features	Print Around, Color By Words, PDF Direct, Smart Duplex, Run Black, Secure and Personal Print, Booklet Printing, Smart Trays, Sample Set, Personal Saved Print, Custom size pages, Collation, Banner-size printing, Watermarks <sup>3</sup> , PhaserSMART®, Print submission tools, Extended Font Storage, Scaling, Separation Pages, N-up, Internet Printing Protocol (IPP), Job Pipelining, Bi-directional driver, Layout/watermark, Form/Font Storage		
<b>Accounting</b>	Job Accounting, Usage Analysis Tool, Automatic Meter Read, Automatic Supplies Replenishment		
<b>Security</b>	Secure HTTPS (SSL), IPsec, Optional removable hard drive, 802.1X authentication, IPv6, SNMPv3, Image overwrite, Configurable disk overwrite, Port control, IP filtering		
<b>Software Solutions</b>	Standard	Xerox® PhaserCal®	
	Optional	Optional	Xerox® PhaserMatch 5.0 with Xerox® PhaserMeter® Color Measurement Device powered by X-Rite
<b>Warranty</b>	One-year on-site warranty, earn free service coverage with Xerox eConcierge®, Xerox® Total Satisfaction Guarantee		

<sup>1</sup> Maximum volume capacity expected in any one month. Not expected to be sustained on a regular basis; <sup>2</sup> Finishers require installation of either a 3 Tray Module or High Capacity Tandem Tray <sup>3</sup> Windows driver only

**Device Management:** CentreWare® Internet Services, CentreWare Web, Email alerts, Cloning, PhaserSMART®, Job Accounting, Usage Analysis, Print Submission Tools, Job Tracker, WebJet Admin Interface, Tivoli, Apple® Bonjour

**Print Drivers:** Windows® XP/Server 2003/2008/Vista/7, Mac OS® 10.5 and higher, Oracle® Solaris® 9, 10, Fedora Core® 12-15, SUSE® 11.x, IBM® AIX® 5, HP-UX® 11iv2, Xerox® Global Print Driver®, Xerox® Mobile Express Driver®

**Font Capability:** 139 PostScript® fonts; 93 PCL® fonts

**Color Standards:** PANTONE® calibrated solid-color simulations, Adobe PostScript device-independent color, CIE International color standards, and support for ICC, ICM and Apple ColorSync color management systems, PhaserMatch 5.0, PhaserCal

**Media Handling:** Tray 1: 20 lb. bond to 130 lb. cover (75–350 gsm); Automatic 2-sided printing: 20 lb. bond – 98 lb. cover (75–256 gsm); Automatic 2-sided printing with Extra Heavy Duty Media Kit (optional): 20 lb. bond – 110 lb. cover (75–300 gsm); Trays 2-5 and finishers: 20 lb. bond to 98 lb. cover (75–256 gsm); Lightweight to extra heavy cardstock (coated and uncoated), plain, preprinted, prepunched, letterhead, envelopes, transparencies, recycled, custom

**Operating Environment:** Temperature: Operating: 10° to 32° C (50° to 90° F); Relative Humidity (noncondensing): Operating: 15% to 85%; Sound pressure levels: Printing: 52 dB(A), Standby: 21 dB(A); Sound power levels: Printing: 6.81 B(A), Standby: 3.80 B(A)

**Electrical:** 115V: 50/60Hz: Printing (avg): 844 W, Ready: 86 W, Power Saver: 53 W; Sleep: 5.3 W; 230V: 50/60Hz: Printing (avg): 760 W, Ready: 86 W, Power Saver: 56 W; Sleep: 6.3 W

**Unpackaged Dimensions (WxDxH):** 7800DN: 25.3 x 27.5 x 22.8 in. / 641 x 699 x 578 mm, Weight: 178.6 lb. / 81 kg; 7800GX: 25.3 x 27.5 x 37.5 in. / 641 x 699 x 953 mm, Weight: 255.7 lb. / 116 kg; 7800DX: 25.3 x 27.5 x 37.5 in. / 641 x 699 x 953 mm, Weight: 275.6 lb. / 125 kg; Office Finisher LX: 39.8 x 21.7 x 37.1 in. / 1,012 x 552 x 942 mm, Weight: 61.6 lb. / 28 kg; Office Finisher LX with Booklet Maker: 39.8 x 23.5 x 41.6 in. / 1,012 x 597 x 1057 mm, Weight: 81.8 lb. / 37.2 kg; Professional Finisher: 34.8 x 25.6 x 39.8 in. / 885 x 650 x 1,010 mm, Weight: 199.5 lb. / 90.7 kg

**Certifications:** Certified to UL 60950-1/CSA 60950-1-07, 2nd Edition; FCC Part 15, Class A; Low Voltage Directive 2006/95/EC; EN 60950-1, 2nd Edition; EMC Directive 2004/108/EC; EN 55022, Class A; EN 55024; RoHS Directive 2002/95/EC; Section 508 Compliant; ENERGY STAR® Qualified

#### Supplies

Standard-capacity Toner Cartridges:	
Cyan: 6,000 pages <sup>1</sup>	106R01563
Magenta: 6,000 pages <sup>1</sup>	106R01564
Yellow: 6,000 pages <sup>1</sup>	106R01565
High-capacity Toner Cartridges:	
Black: 24,000 pages <sup>1</sup>	106R01569
Cyan: 17,200 pages <sup>1</sup>	106R01566
Magenta: 17,200 pages <sup>1</sup>	106R01567
Yellow: 17,200 pages <sup>1</sup>	106R01568
Staple Refills for Office Finisher LX	008R12941
Staple Refills for Professional Finisher	008R12897

#### Routine Maintenance Items

Imaging Unit: Up to 145,000 pages <sup>2</sup>	106R01582
Waste Cartridge: Up to 20,000 pages <sup>2</sup>	108R00982
Suction Filter: Up to 120,000 pages <sup>2</sup>	108R01037
IBT Cleaner: Up to 160,000 pages <sup>2</sup>	108R01036

#### Options

Office Finisher LX	097S04166
Booklet Maker for Office Finisher LX	497K03850
2/3-hole Punch for Office Finisher LX	497K03860
Professional Finisher	097S04167
3 Tray Module	097S04159
High Capacity Tandem Tray	097S04160
Cabinet Stand	097S04552
Extra Heavy Duty Media Kit	097S04341
PhaserMatch 5.0	
(includes PhaserMeter® powered by X-Rite)	097S04276
Wireless Network Adapter	
– N. America power converter	097S03740
– European power converter	097S03741
– UK power converter	097S03742

<sup>1</sup> Average standard pages. Declared Yield in accordance with ISO/IEC 19798. Yield will vary based on image, area coverage and print mode.

<sup>2</sup> Average standard pages. Yield will vary depending on job run length, media size and orientation.



# Xerox® Phaser® 7800

Color Printer



For more information, call **1-877-362-6567** or visit us at [www.xerox.com/office](http://www.xerox.com/office)

©2013 Xerox Corporation. All rights reserved. Contents of this publication may not be reproduced in any form without permission of Xerox Corporation. Xerox®, Xerox and Design®, CentreWare®, Global Print Driver®, Mobile Express Driver®, Phaser®, PhaserCal®, PhaserMatch® and PhaserMeter® are trademarks of Xerox Corporation in the United States and/or other countries. As an ENERGY STAR® partner, Xerox Corporation has determined that this product meets the ENERGY STAR guidelines for energy efficiency. ENERGY STAR and the ENERGY STAR mark are registered U.S. marks. The information in this brochure is subject to change without notice. Updated 3/13 BR395 78XBR-01UD

