

# Touchbar Exit Device and Concealed Vertical Rod Device

STEELCRAFT

SCHLAGE

IVES

LCN

GLYNN JOHNSON

VON DUPRIN

FALCON

## 1590 Series Touchbar Devices



The EL1590 electrified exit device provides convenience and security in a surface-applied exit device ideal for any type of door. A monitor switch is included.

**Note:** The EL1590 and ED1590 Series are handed devices.

### Clean looks in a rim pushpad device.

The 1590 offers the aesthetic benefit of the 1490 with the installation and maintenance ease of a rim exit device.

- Quarter-turn dogging
- Simplified cartridge mounting for most standard rim cylinders
- Durable metal end caps
- Available in a full range of architectural finishes

Model	Trim Package	ANSI Type	Function
1590	No outside trim	4	1
1591	Pull only (9970)	4	2
1592	N.L. cylinder	4	3
1593	H.B. cylinder	4	4
1594	Pull w/N.L. cylinder	4	02/03
1595	Pull w/H.B. cylinder	4	02/04

## 1490 Series Concealed Vertical Rod Touchbar Devices



The 1490 device is built with rugged steel operating mechanisms, and durable aluminum push bars and end caps. The electrified version includes a monitor switch.

**Note:** The EL1490 and ED1490 Series are handed devices.

### The original pushpad device.

The 1490 is our heaviest device and offers a clean appearance with pushpad styling and a variety of practical features.

- Height is 3 with 2-3/4" projection
- Quarter-turn dogging
- Simplified cartridge mounting for most standard rim cylinders
- Available in a full range of architectural finishes
- Durable metal end caps
- Rod extension kits for doors 7' to 10' available

Model	Trim Package	ANSI Type	Function
1490	No outside trim	6	1
1491	Pull only (9970)	6	2
1492	N.L. cylinder	6	3
1493	H.B. cylinder	6	4
1494	Pull w/N.L. cylinder	6	02/03
1495	Pull w/H.B. cylinder	6	02/04
1498	Dummy	6	

### 2390 Series Recessed Concealed Vertical Rod Devices

**The best available recessed concealed device for stile and rail doors.**

The 2390 is a Grade 1 exit device designed for high use and abuse, and delivers a variety of performance features that ensure smooth, easy and reliable operation. Easier rod adjustment simplifies installation.

- Sloped metal end caps
- Sound dampening on the in-stroke and out-stroke
- Night latch/hold back feature
- Electric latch retraction available
- Request-to-exit switch (touchbar monitor) available
- Field-reversible handing



Model	Trim Package	ANSI Type	Function
2390	No outside trim	6	01
2392	Mortise Cylinder Assembly with Cylinder	6	03
2395	Mortise Cylinder assembly with Less Cylinder	6	03/04
2398	Dummy	6	

### 1990 Series Concealed Vertical Rod Devices

**The industry standard for aluminum door exit devices.**

Classic looks and a long history of reliable performance has made the 1990 the #1 selling exit device for aluminum doors. This ANSI Grade 1 device features hardened steel latches and is compatible with stiles as narrow as 1 3/4".

The 1990 device is equipped with hardened steel latches and an adjustable strike to ensure safety, security and quiet operation.

**Other features include:**

- Concealed mounting screws
- Field adjustable width
- Available in a full range of painted and architectural finishes
- Hex dogging
- UL Listed 305
- Field reversible (non-handed)



Model	Trim Package	ANSI Type	Function
1990	No outside trim	6	01
1991	Pull Only (9970)	6	02
1992	Cylinder only	6	03/04
1993	Pull and cylinder	6	02/03/04

### 2090 Series Rim Crossbar Devices

**Classic looks in a rim exit device.**

The 2090's balanced appearance, dependable performance, and economical pricing has made it a popular choice where rim exit devices are required. Equipped with a 1/2" throw steel latchbolt, the 2090 can be mounted on stiles as narrow as 1 3/4". Removable mullions are available for pairs of doors applications. The 2090 is an ANSI Grade 1 device.

**Other features include:**

- Surface mounted strikes for full frame or blade type stops
- Field adjustable width
- UL Listed 305
- Available in a full range of painted and architectural finishes



Model	Trim Package	ANSI Type	Function
2090	No outside trim	4	01
2091	Pull only (9970)	4	02
2092	Cylinder only	4	03/04
2093	Pull and cylinder	4	02/03/04

# Accessories

## Mullions

### RM 70/170 removable mullion.

The RM 70 is designed for use with 2090 Series, and the RM170 for use with 1790 Series. Each comes complete with adjustable mortised strikes and security clips. Compatible with doors 7' to 10', and for use on doors with stiles as narrow as 1-3/4". Made of aluminum and available in anodized aluminum or bronze finishes.

### RM 150 removable mullion.

For use with 1500 Series only. Comes complete with adjustable mortised strikes and security clips. Compatible with doors 7' to 10', and for use on doors with stiles as narrow as 1-3/4". Made of aluminum and available in anodized aluminum or bronze finishes.

## Strikes

**SD 35** Standard strike for **2090** device

---

**SD 36** Strike for **2090** device  
(for all stops)

---

**PB 48** Standard top strike for  
**1490/1690/1990/2390**

---

**STK 45** Stainless steel strike for inactive leaf,  
pair of doors for **1590/1790/2090**

---

**TD 35** Strike for **1590/1790** rim device

---

## Pulls

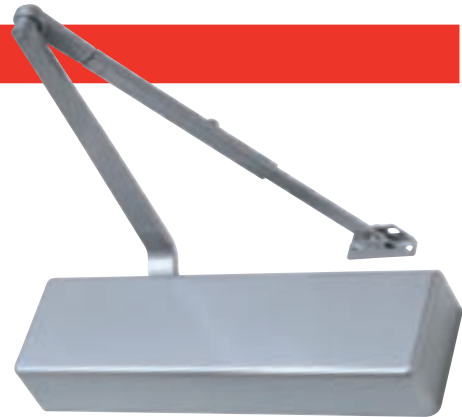
**9970** Standard pull for  
**Pull 1490/1590/1990/2090**

## MAKING ALUMINUM CLOSERS EASY

The Surface Closer (SC) Series is designed to meet the most common installation and application requirements in the commercial marketplace and, in most cases, provide an identical footprint which makes renovation and retrofit work very easy. All SC Series closers are covered by a 10-year warranty and shipped with throughbolts, wood and machine screws. Closers without hold-open arms have been certified by UL and cUL to be in compliance with UL10C for use on fire-rated doors. Closers are available in aluminum, dark bronze and brass finishes.

### SC70 Series

- Heavy-duty cast aluminum door closer
- Ready to mount hinge side, top jamb, or parallel arm configuration
- Arm options: regular, hold-open (HO), heavy duty (HD), dead stop (DS), and hold open dead stop (HO/DS), spring n' stop (SS), hold-open spring n' stop (HO/SS)
- Adjustable size 1-6
- 1-1/2" diameter piston
- SC70 closers are suitable for interior doors up to 54" (1371mm) wide and exterior doors up to 48" (1219mm) wide, and can be adjusted to meet the ADA accessibility requirements
- Delay action (optional) provides additional time for people to move through the door
- Meets ANSI standard 156.4, Grade 1



### SC80 Series

- Medium-duty cast aluminum door closer
- Ready to mount hinge side, top jamb or parallel arm configurations
- Arm options: regular, hold-open(HO), heavy duty(HD), dead stop (DS), and hold open dead stop (HO/DS), spring n' stop (SS), hold-open spring n' stop (HO/SS)
- Adjustable size 1-6
- Available with full and slim line covers
- SC80 closers are suitable for interior doors up to 54" (1371 mm) wide and exterior doors up to 42" (1067mm) wide
- SC81 closers are suitable for interior doors up to 48" (1219mm) wide, exterior doors up to 36" wide (914mm) and can be adjusted to meet the ADA accessibility requirements
- Delay action (optional) provides additional time for people to move through the door
- Meets ANSI standard A156.4, Grade 1



### SC60 Series

- Light/medium-duty cast aluminum door closer
- Ready to mount hinge side, top jamb or parallel arm configuration
- Arm options: regular, hold-open (HO), heavy duty (HD), dead stop (DS), and hold open dead stop (HO/DS), spring n' stop (SS), hold-open spring n' stop (HO/SS)
- Adjustable size 1-4 (SC61), 2-5 (SC60), and fixed size 4 (SC64) and 5 (SC65)
- Optional slim line cover available
- SC64 and SC65 sized closers are typically used in aluminum storefront applications
- SC60 closers are suitable for interior doors up to 54" (1371mm) wide and exterior doors up to 52" (1067mm) wide
- SC61 closers are suitable for interior doors up to 48" (1219mm) wide, exterior doors up to 36" wide (914mm) and can be adjusted to meet the ADA accessibility requirements
- Delay action (optional) provides additional time for people to move through the door
- Meets ANSI standard A156.4, Grade 1



# Closers

STEELCRAFT

SCHLAGE

IVES

LCN

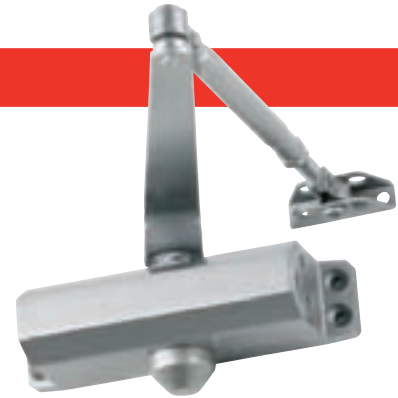
GLYNN JOHNSON

VON DUPRIN

FALCON

## SC90 Series

- Light-duty cast aluminum door closer
- Ready to mount hinge side, top jamb, or parallel arm configuration
- Arm options: regular, hold-open (HO)
- Fixed size 1 (SC91), 3 (SC93) and 4 (SC94)
- SC91 closers are suitable for lightweight interior doors and are preset to meet ADA accessibility requirements
- SC94 closers are suitable for interior doors from 36" (914mm) to 48" (1219mm) wide and exterior doors to 36" (914mm) wide
- SC93 and SC94 available with optional/standard cover
- Meets ANSI standard A156.4, Grade 3



### Overhead Closer Cross Reference by Application

Falcon	SC71 <sup>1</sup>	SC81 <sup>2</sup>	SC60 <sup>3</sup> , SC61 <sup>3</sup>	SC91, SC93, SC94 <sup>1</sup>
Corbin	DC6210	3210		DC4600
Dorma	8916	8616 <sup>2</sup>	7300, 7414, 7436	7203, 7204, 7205
Norton	7500 <sup>1</sup> /7700 <sup>1</sup>	8301, 8501 <sup>2</sup>	1600 <sup>3</sup> , 1601 <sup>3</sup>	1700, 9300BC <sup>1</sup>
Sargent	281/351	1330 <sup>2</sup> 1430 <sup>2</sup>	1130	
Stanley	D-4550	D-3550	D-1650	
Yale	400/4400	3301, 3501 <sup>2</sup>	51 <sup>3</sup> , 51BF <sup>3</sup>	2300BC <sup>1</sup> , 5100

<sup>1</sup> Indicates identical footprint

<sup>2</sup> Indicates identical footprint

<sup>3</sup> Indicates identical footprint

## Overhead Concealed Door Closer

The overhead concealed door closer is designed to meet the common installation and application requirements in the commercial marketplace. The OHC100 Series closer is covered by a five-year warranty. Closers without hold-open function have been certified by UL and cUL to be in compliance with UL 10C for use on fire rated doors.



### OHC100 Series

- Easily fits into headers as small as 1-3/4" x 4"
- Arm options: "S" style side load arm, "A" style end load arm and "VO" style offset arm and track (Aluminum or Dark Bronze finish)
- Adjustable size 2-4, fixed size 3
- Positive centering to hold door closed against wind or draft
- Cylinders available in 90 degree and 105 degree non-hold-open and hold-open

### Overhead Concealed Cross Reference

Falcon	OHC100 Series
Dorma	RTS88
Global	TC7000
International	Series 100 and Series 200
Jackson	20-330
Kawneer	Husky II
Norton	4900
Rixson	608, 0608, 700, 0700, 800
Ryobi	30 Series
Sentinel	30 Series



# FALCON

## ElectroMechanical Automatic Operator



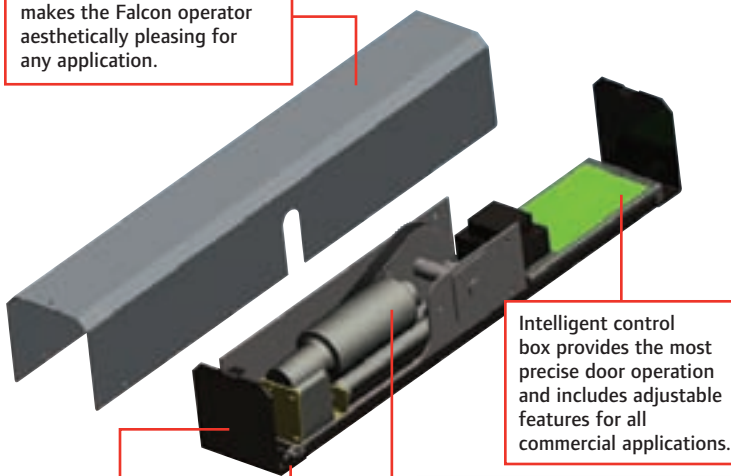
### Introducing the auto operator that changes everything.

**Slimmer, sleeker, tougher and makes any opening easier to use.**

The ElectroMechanical Low Energy Operator by Falcon is the most cost-effective solution to automating your entrances. Designed specifically for the commercial market, the Falcon operator is ideal for assisted living communities, low traffic store front entrances, or automating interior doors for added assistance. When used manually, this operator acts like a regular manual door closer.



Steel aluminum finished cover makes the Falcon operator aesthetically pleasing for any application.



Intelligent control box provides the most precise door operation and includes adjustable features for all commercial applications.

Non-handed motor gearbox uses mechanical controls to act as a 3 door closer in manual operation.

One-piece mounting bracket eliminates the need for end caps reducing parts and installation time.

Mounting bracket contains fastening notches to reduce parts and allow for faster and easier installation.

#### FEATURES & BENEFITS

- Integrated intelligent power boost graduates additional closing assist when door nears latch. Helps to ensure secure closing to overcome external conditions and pressure differentials.
- Push n' Go can be programmed on/off to add automatic operation with slight manual opening of the door.
- Control box detects obstructions in path of door, and will temporarily reprogram opening degree in order to avoid abuse to the door.
- 90° power strain reduction on hinges, operator and other door hardware
- Non handed for right-or left-swinging doors.
- Auto reverse on opening cycle provides safety by reversing direction when coming into contact with a person or object.
- Microprocessor control box for reliability.
- Standard 26" length header with aluminum finish.
- Certified to meet UL and ANSI A156.19 requirements.

#### AVAILABLE ACCESSORIES

The Falcon operator comes with an easy to select and install line of accessories, to help meet most operator applications.

- 4 3/4" square stainless steel plate
- Flush mount or surface mount box
- Weather ring
- Wireless transmitter
- Wireless receiver

LEED

## Leadership in Energy and Environmental Design Progress is Greener with Ingersoll Rand

At Ingersoll Rand Progress is Greener. As a global company, we are taking the initiative to offer environmentally friendly products to better support our communities' environmental needs.

In addition to offering environmentally friendly products, we will continually update and provide you with LEED information.

LEED, Leadership in Energy and Environmental Design, is a rating system that is designed to construct sustainable and energy efficient buildings, which in turn promotes a clean and sustainable environment. LEED certification focuses on 5 distinct areas of building performance: sustainable sites, water efficiency, energy and atmosphere, materials and resources, and indoor environmental quality.

From these 5 focus areas, a series of benchmarks is established for each and credits are awarded based on the completion of each benchmark.

As environmental awareness grows around the world, people are seeing the value in programs such as LEED. In addition to ensuring environmentally safe and sustainable buildings, becoming LEED certified has many incentives. National, state, and local governments are implementing LEED initiatives, in which they standardize LEED certification for all new construction. Some governments are also providing financial incentives for buildings that become LEED certified, such as discounted or fast track building permits.

Ingersoll Rand has recognized the value of the LEED rating system and we are continuing to provide you with information for various LEED credits.

Currently, many products offered by **Schlage, Von Duprin, LCN, Falcon, Monarch, and Dor-o-Matic** contribute to a project's LEED certification in the following credits:

Materials & Resources Credit 4.1- Recycled Content  
Materials & Resources Credit 4.2- Recycled Content  
Materials & Resources Credit 5.1- Regional Manufacture  
Materials & Resources Credit 5.2- Regional Manufacture

For further information regarding LEED certification and how your next building can become certified, please visit the USGBC website <http://usgbc.org>.

Contact your local SSC representative for specific product information and details or additional Green-Building information.

*Progress is greener with Ingersoll Rand*





Ingersoll Rand's Security Technologies Sector is a leading global provider of products and services that make environments safe, secure and productive. The Sector's market-leading products include electronic and biometric access control systems; time and attendance and personnel scheduling systems; mechanical locks and portable security, door closers and exit devices, steel doors and frames, architectural hardware and technologies and services for global security markets.

[www.ingersollrand.com](http://www.ingersollrand.com)