

ARCHITECTURAL METAL PRODUCTS



Emburite II – 3mm (.125”) Building Panels

Basic Use and Limitations

Emburite II 3mm (.125”) aluminum plate panels are used in a variety of applications. It is light weight, easily formable and can be supplied in large sheet sizes. Emburite II is used in new construction and/or renovation for either exterior or interior applications. Building types include commercial, industrial, and institutional.

Typical uses include, wall panelling, curtain wall, spandrel, fascia, soffits including ceiling panels, beam cladding, store fronts, sill and cap flashings, column covers, enclosure panels, accent strips, corners, jambs, etc.

These products are for non load bearing use only.

Product Description

Emburite II 3mm (.125”) panels can be supplied brake formed or fabricated with extrusions attached by welding or stud welding. All face areas are ground smooth so that there is not any transfer or distortion from welding. On brake formed panels, the corners are often welded and ground smooth before finishing.

Standard aluminum alloys include 3003H14 and 5005H14 tension levelled sheet in 3mm (.125”) thickness. Other thicknesses are available depending on the application.

We also offer radiused fascias, corners, barrel vaults, etc. to meet specific design requirements.

A variety of panel cladding systems are available.

Standard top hat panels may be used where caulking (wet seal) joints are acceptable. The panel corners can be welded and ground smooth or non welded for cost savings. The returns can be of various depths to suit the site condition.

Dry joint systems (non caulked) are also available. They offer many advantages. Water cannot enter directly, because of the panel overlap design. Any condensation either evaporates or is drained by putting slotted weep holes at the base of each panel. Some designs have non progressive installation which allows panels that may be damaged to be removed individually. Hidden fasteners are used in certain applications and there are a variety of ways to achieve this look. Channels or flat strips, overlapping panels, and extrusions may be used.

Design Criteria

Panel layouts up to 1829mm (72”) wide x 4039mm (13’-3”) long are available with stiffeners used to prevent oil canning or distortion. The quantity of stiffness used per panel depends on the length and width of the panel. Radiused panels can be formed up to 3505mm (11’-6”) long.

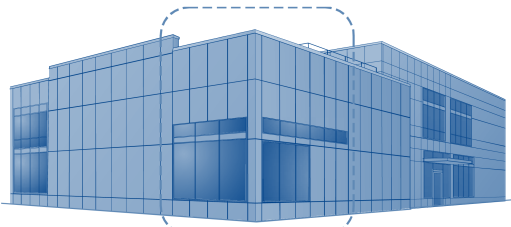
The following are fabrication tolerances. Panel bow: 0.2% of panel dimensions up to .1875” maximum.

Width of length tolerances are as follows: +/- .032” up to 48”: +/- .064” from 48” to 144” squareness is <=.1875” difference between diagonal measurements.

The camber is <=.032”

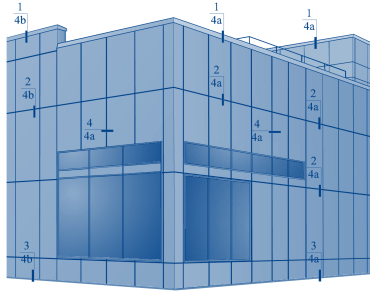
All panel sizes must be designed to accommodate for expansion and contraction.

EMBURY Co. CLADDING SYSTEM WITH CAULKED JOINT or FILLER JOINT.



Exterior Elevation

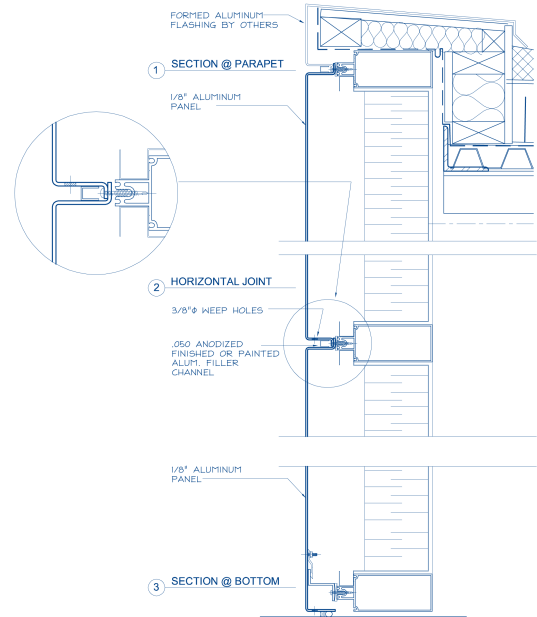
See Large Partial Elevation



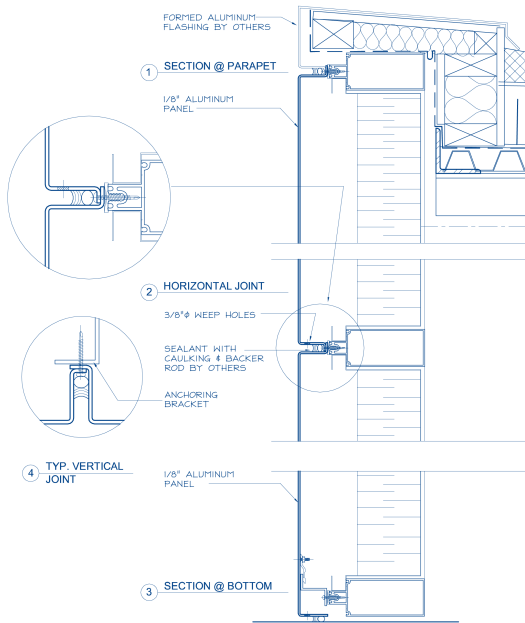
PARTIAL ELEVATION

EMBURY Co. CLADDING SYSTEM WITH CAULKED JOINT or FILLER JOINT.

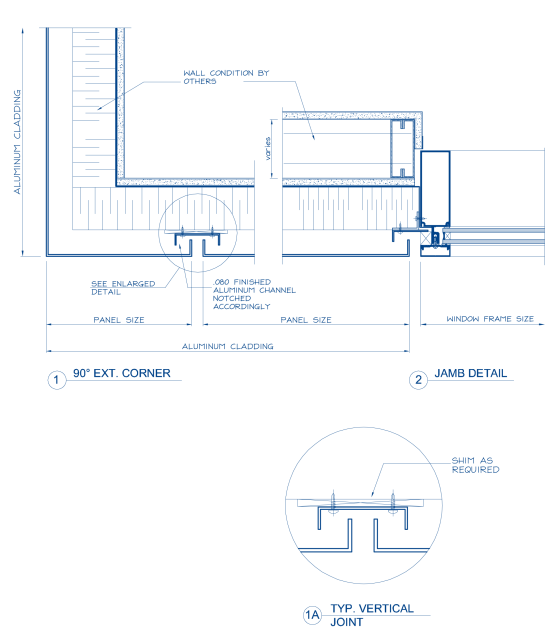
SECTION DETAIL ALTERNATIVE TO Pg. 4a



EMBURY Co. CLADDING SYSTEM WITH CAULKED JOINT or FILLER JOINT.
SECTION DETAIL ALTERNATIVE TO Pg. 4



EMBURY Co. CLADDING SYSTEM WITH CAULKED JOINT or FILLER JOINT.



Finishes

Emburite II wall panels are finished in an anodized or painted finish.

Specifications include AAM12C22A31 class II (.0004) or AAM12C22A41 class I (.0007) for clear anodized coatings and AAM12C22A42 for bronze anodized colours.

PPG or Valspar paint coatings are available in standard, exotic 2, 3, or 4 coat systems as well as pearlescent and metallic flake colours. These paints can also be matched to custom colours.

Other metal finishes are available upon request.

Applicable Standards

ASTM B209 – Standard Specification for Aluminum and Aluminum-Alloy Sheet and Plate

Aluminum Association Designation System for Aluminum Finishes

Installation

Embury Company is a custom manufacturer of Emburite II 3mm (.125") panel systems and other architectural metal products. Installation is carried out by experienced installers and by the appropriate subcontractor according to specifications and approved shop drawings.

Availability and Cost

Embury Company' products are distributed throughout North America.

Contact our office for current pricing.

Warranty

Embury Company offers a standard one year warranty on workmanship and finish. Extended warranties are available on some finishes. Any extended warranties must be approved by the paint manufacturer before the project begins.

Maintenance

Periodic cleaning of at least once a year is recommended with a soft cloth and alkali-free detergent. In certain cases some products are under severe environmental pressure or attack from foreign substances. Contact our office for more stringent cleaning measures.

Technical Services

Embury Company provides a complete technical consultation service. It is available to the professions and trades for design assistance, special metal fabrication and finish recommendations, including renovation suggestions. Early consultation can reduce construction costs by simplifying preparation and fabrication.



Tel: 905-293-9900
Fax: 905-293-9970
www.emburyco.com

**Emburite II – 3mm (.125")
Building Panels**