

2x2 MiMo 4G/5G Dome Antenna Kit

LG-IN2446



Low Profile 4x4 4G/5G MiMo

4 x 4 MiMo Dual Band WiFi

GPS/GNSS Active Antenna 26dB LNA

The LG-IN2446 range has been designed to provide 4x4 4G/5G MiMo performance from 617-960/1710-6000MHz combined with GPS/GNSS and 4x4 MiMo WiFi 2.4/5.0GHz in a compact low profile housing.

The antenna is designed to be panel mounted and can be fitted on a conductive or non-conductive panel. Supplied with integrated flame retardant RG174 cables (Compliant to UNECE 118.01 and EN45545-2) and a halogen free flame retardant radome the antenna is suitable for many environments and applications. The antenna radome is available in black or white and meets IK10 for vandal resistance and IP69K for ingress protection.

The integrated GPS/GNSS module supports GPS, Glonass, Galileo, QZSS and Compass with 26dB LNA gain. This GPS module features advanced filtering for LTE B13/14 designed to minimise potential in band interference.

LG-IN2446 is supplied as a complete plug and play kit with integrated 5m (16') ultra-low loss TPE extension cables and SMA (m) connectors for 4G/5G and GPS and Rev Pol SMA for WiFi.



Certified IK10 Impact Resistant



Certified IP69K Ingress Protected



Flame Retardant Halogen Free Radome -UL94-V0

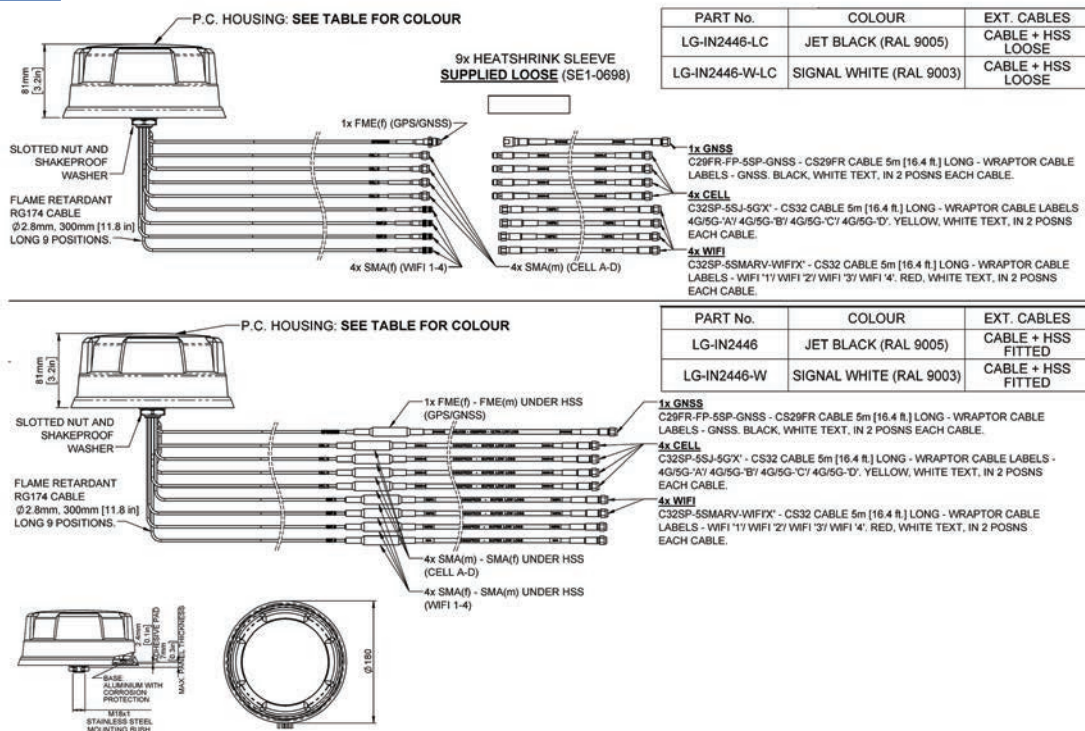


UV, Ozone, High & Low Temperature Protected



Environmentally Compliant - Meets RoHS, REACH - PVC Free

Technical Drawing



Waiver: The data given above is indicative of the performance of the product/s under particular conditions and does not imply a guarantee of performance. These specifications are subject to change without notice. Copyright © Panorama Antennas Ltd. All rights reserved.

2x2 MiMo 4G/5G Dome Antenna Kit

LG-IN2446

Part No.		LG-IN2446-W	LG-IN2446-W-LC	LG-IN2446	LG-IN2446-LC
Electrical Data					
Frequency Range (MHz)	4G/5G Elements	4x 617-960 / 1710-6000			
	WiFi Elements	4x 2.4/4.9-6GHz			
Peak Gain: Isotropic : (dBi)†	4G/5G Elements	617-960MHz	4		
		1710-3800MHz	8		
	WiFi Elements	4900-6000MHz	9		
		2.4 GHz	9		
Typical Efficiency **	4G/5G Elements	4.9-6.0GHz	9		
		617-960MHz	>50%		
	1710-3800MHz	>75%			
Isolation ***	WiFi Elements	4900-6000MHz	>85%		
	4G/5G Elements		>70%		
Correlation Co-efficient	WiFi Elements		>10dB		
	4G/5G Elements		>12dB		
Nominal Impedance	WiFi Elements		< 0.2		
	4G/5G Elements		<0.1		
GPS/GNSS Data					
Frequency Range (MHz)	1562-1612				
VSWR	<2.0:1 ± 4MHz				
Gain: LNA	26dB				
Out of band rejection	>40dB (@ > +/- 100MHz f)				
Typical Noise Figure	-2.7dB				
Notch Filter rejection @787MHz	24dB				
Operating Voltage	3 - 5V DC				
Typical Current (mA)	15				
Mechanical Data					
Dimensions (mm)	Height	80 (3.1")			
	Diameter	180 (7.1")			
Operating Temp	-40° / +80°C (-40° / +176°F)				
Colour	White			Black	
Ingress & Impact Protection	IK10 & IP69K				
Mounting Data					
Mounting type	Panel mount				
Max panel thickness (mm)	7 (0.27")				
Mounting hole (mm)	19 (3/4")				
Extension Cable Data					
		GPS Cable		All Other Cables	
All Cables	Type	FR CS29 (UN118.03 / EN45545-2 HL2 Compliant)		CS32 (UN118.03 / EN45545-2 Compliant)	
		Fitted	Loose	Fitted	Loose
	Diameter (mm)	5 (0.2")			
	Length (m)	5 (16')			
Terminations					
4G/5G	4x SMA (m)				
WiFi	4x Reverse Polarity SMA				
GPS/GNSS	1x SMA(m)				

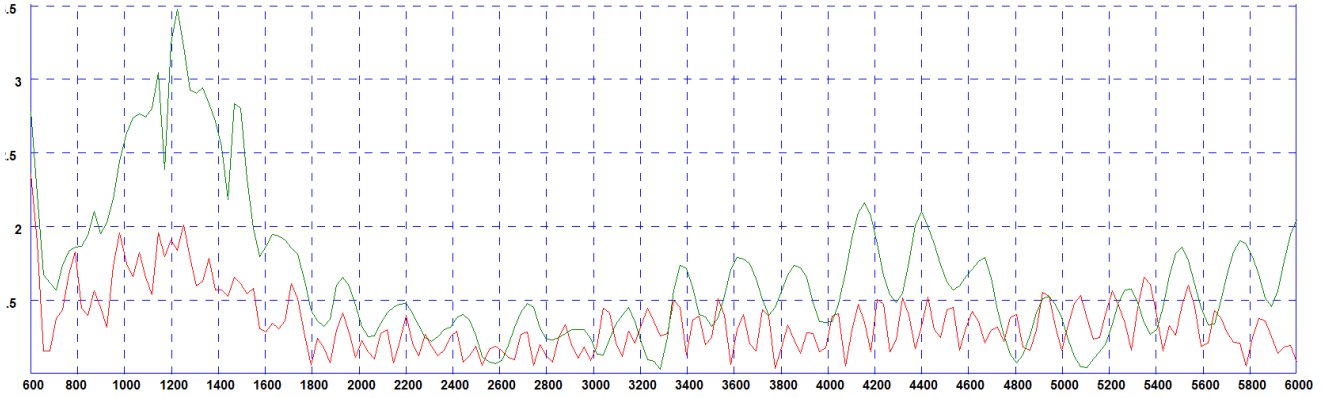
2x2 MiMo 4G/5G Dome Antenna Kit

LG-IN2446



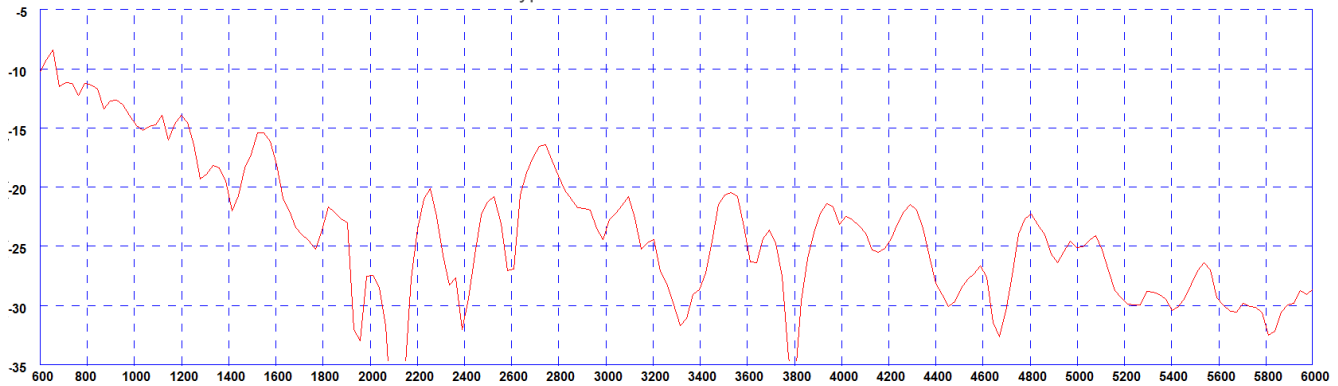
Electrical Data

Typical VSWR - 4G/5G Elements*



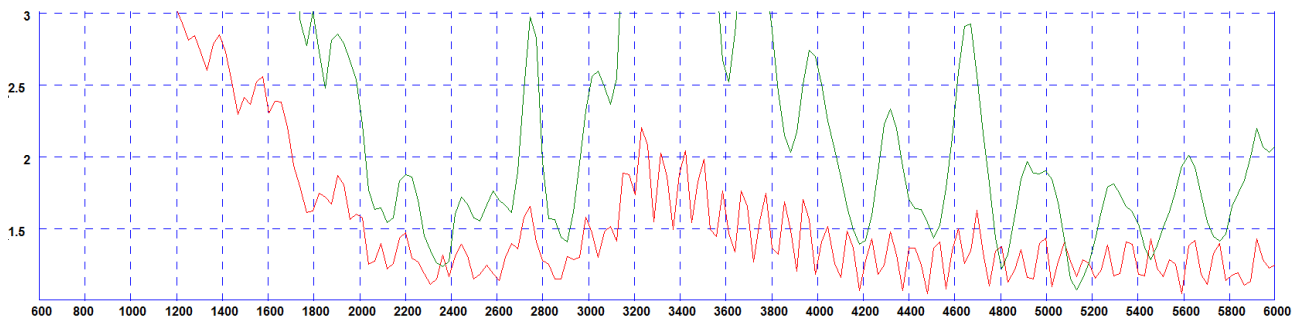
* Green Trace measured with 0.5m (1.5') of RG174 cable Red Trace measured with 5m(17') of CS32 Cable both on a 600x600mm (2'x2') groundplane

Typical Isolation - 4G/5G Elements*



* measured with 0.5m (1.5') of RG174 cable on a 600x600mm (2'x2') groundplane

Typical VSWR - WiFi Elements*



* Green Trace measured with 0.5m (1.5') of RG174 cable Red Trace measured with 5m(17') of CS32 Cable both on a 600x600mm (2'x2') groundplane

For more information contact us:



USAT | Connect What's Critical
605 Eastowne Drive
Chapel Hill, NC 27514

Phone: (888) 550-8728
Email: info@usatcorp.com
Web: <https://usatcorp.com>