

2x2 MiMo 4G/5G Dome Antenna Kit

LP-IN2455



Low Profile 2x2 4G/5G MiMo

The LP-IN2455 range has been designed to provide 2x2 4G/5G MiMo performance from 617-960/1710-6000MHz in a robust low profile package.

The antenna is designed to be panel mounted and can be fitted on a conductive or non- conductive panel. Supplied with integrated flame retardant RG174 cables (Compliant to UNECE 118.01 and EN45545-2) and a halogen free flame retardant radome the antenna is suitable for many environments and applications.

The antenna is available with a black or white radome which meets IK10 for vandal resistance and IP69K for ingress protection.



Certified IK10
Impact Resistant



Certified IP69K
Ingress Protected



Flame Retardant
Halogen Free
Radome -UL94-V0

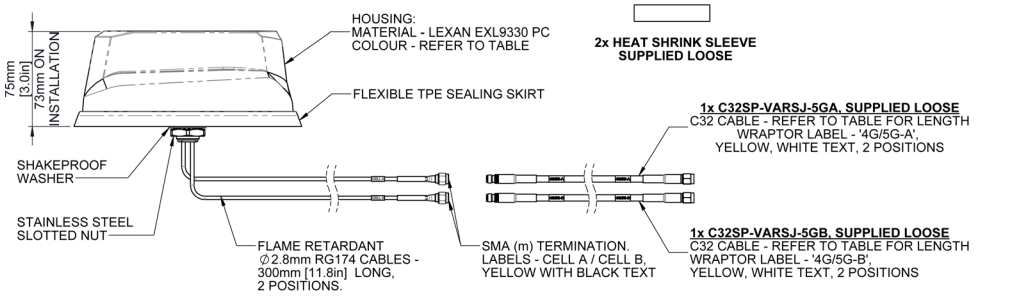


UV, Ozone, High &
Low Temperature
Protected

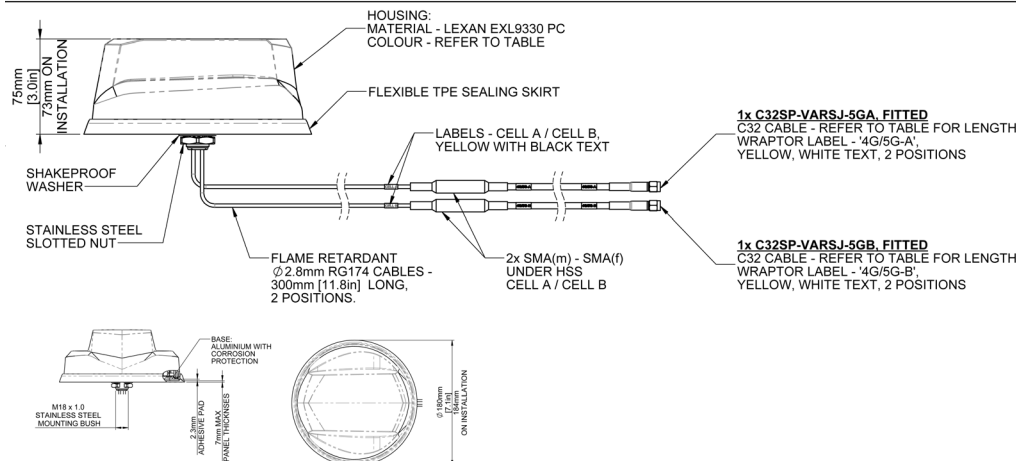


Environmentally
Compliant - Meets
RoHS, REACH - PVC
Free

Technical Drawing



PART NO.	COLOUR	LENGTH (m)/(ft)
LP-IN2455-LC-1	JET BLACK (RAL9005)	1.0 / 3.3
LP-IN2455-LC-2	JET BLACK (RAL9005)	2.0 / 6.6
LP-IN2455-LC-3	JET BLACK (RAL9005)	3.0 / 9.8
LP-IN2455-LC-4	JET BLACK (RAL9005)	4.0 / 13.1
LP-IN2455-LC	JET BLACK (RAL9005)	5.0 / 16.4
LP-IN2455-LC-6	JET BLACK (RAL9005)	6.0 / 19.7
LP-IN2455-W-LC-1	SIGNAL WHITE (RAL9003)	1.0 / 3.3
LP-IN2455-W-LC-2	SIGNAL WHITE (RAL9003)	2.0 / 6.6
LP-IN2455-W-LC-3	SIGNAL WHITE (RAL9003)	3.0 / 9.8
LP-IN2455-W-LC-4	SIGNAL WHITE (RAL9003)	4.0 / 13.1
LP-IN2455-W-LC	SIGNAL WHITE (RAL9003)	5.0 / 16.4
LP-IN2455-W-LC-6	SIGNAL WHITE (RAL9003)	6.0 / 19.7



PART NO.	COLOUR	LENGTH (m)/(ft)	NET WEIGHT (g)
LP-IN2455-1	JET BLACK (RAL9005)	1.0 / 3.3	620
LP-IN2455-2	JET BLACK (RAL9005)	2.0 / 6.6	700
LP-IN2455-3	JET BLACK (RAL9005)	3.0 / 9.8	780
LP-IN2455-4	JET BLACK (RAL9005)	4.0 / 13.1	860
LP-IN2455	JET BLACK (RAL9005)	5.0 / 16.4	940
LP-IN2455-6	JET BLACK (RAL9005)	6.0 / 19.7	1020
LP-IN2455-W-1	SIGNAL WHITE (RAL9003)	1.0 / 3.3	620
LP-IN2455-W-2	SIGNAL WHITE (RAL9003)	2.0 / 6.6	700
LP-IN2455-W-3	SIGNAL WHITE (RAL9003)	3.0 / 9.8	780
LP-IN2455-W-4	SIGNAL WHITE (RAL9003)	4.0 / 13.1	860
LP-IN2455-W	SIGNAL WHITE (RAL9003)	5.0 / 16.4	940
LP-IN2455-W-6	SIGNAL WHITE (RAL9003)	6.0 / 19.7	1020

2x2 MiMo 4G/5G Dome Antenna Kit

LP-IN2455

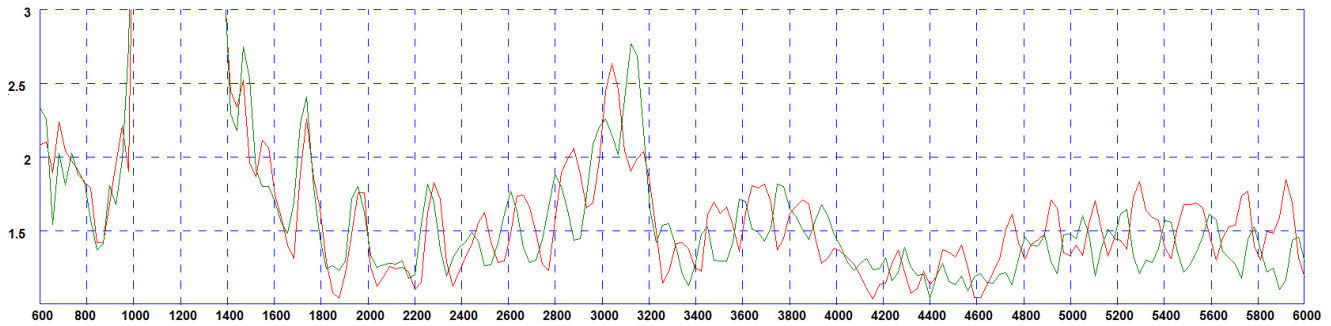
Part No.		LP-IN2455-W	LP-IN2455-W-LC	LP-IN2455	LP-IN2455-LC
Electrical Data					
Frequency Range (MHz)	4G/5G Elements	2x 617-960 / 1710-6000			
Peak Gain: Isotropic : All Elements Fed	4G/5G Elements	617-960MHz	5		
		1710-3800MHz	9		
		4900-6000MHz	10		
Typical Efficiency	4G/5G Elements	>70%			
Isolation	4G/5G Elements	>12dB			
Correlation Co-efficient	4G/5G Elements	< 0.1			
Nominal Impedance	50Ω				
Mechanical Data					
Dimensions (mm)	Height	75 (3")			
	Diameter	180 (7.1")			
Operating Temp	-40° / +80°C (-40° / +176°F)				
Colour	White	Black	White	Black	
Ingress Protection	IP69K				
Mounting Data					
Mounting type	Panel mount				
Max panel thickness (mm)	7 (0.27")				
Mounting hole (mm)	19 (3/4")				
Extension Cable Data					
All Cables	Type	CS32 (UN118.03 / EN45545-2 Compliant)			
		Fitted	Loose	Fitted	Loose
	Diameter (mm)	5 (0.2")			
	Length (m)	5 (16')			
Terminations					
4G/5G	2x SMA (m)				

2x2 MiMo 4G/5G Dome Antenna Kit

LP-IN2455

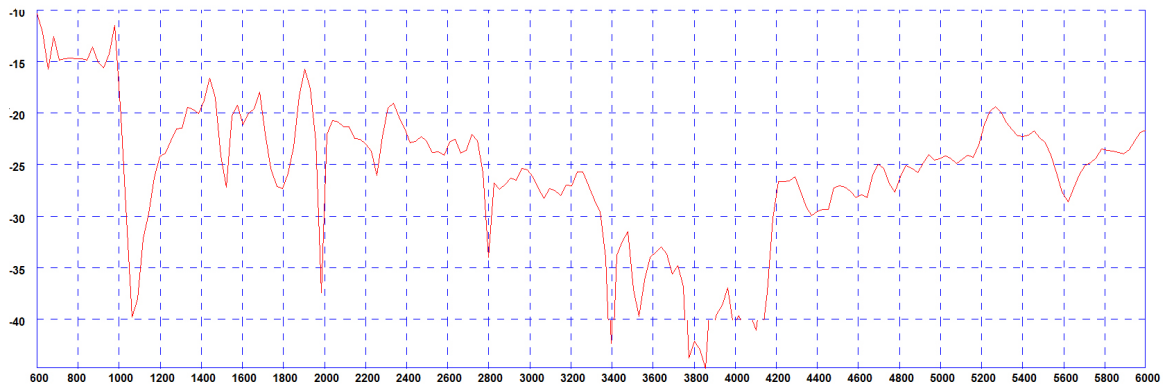
Electrical Data

Typical VSWR - 4G/5G Elements*



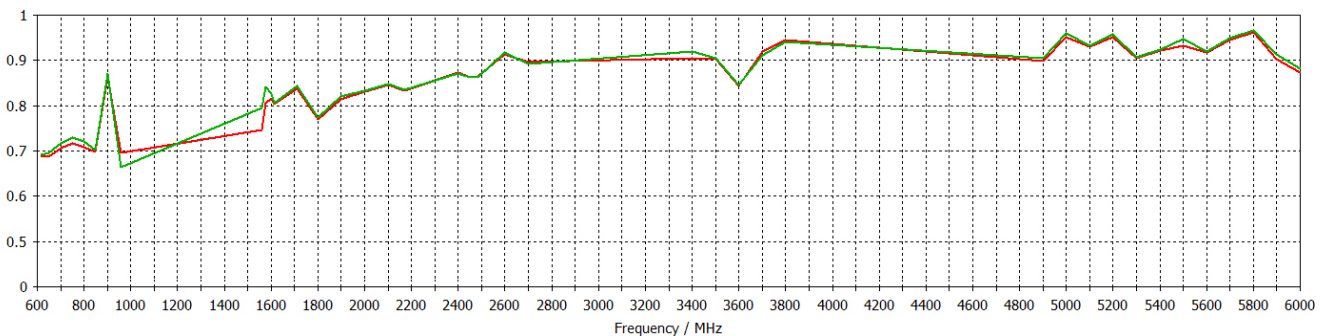
* measured with 0.5m (1.5') of RG174 cable on a 600x600mm (2'x2') groundplane

Typical Isolation - 4G/5G Elements*



* measured with 0.5m (1.5') of RG174 cable on a 600x600mm (2'x2') groundplane

Typical Efficiency- 4G/5G Elements*



* Efficiency modelled with CST Microwave Studio and ignores cable losses