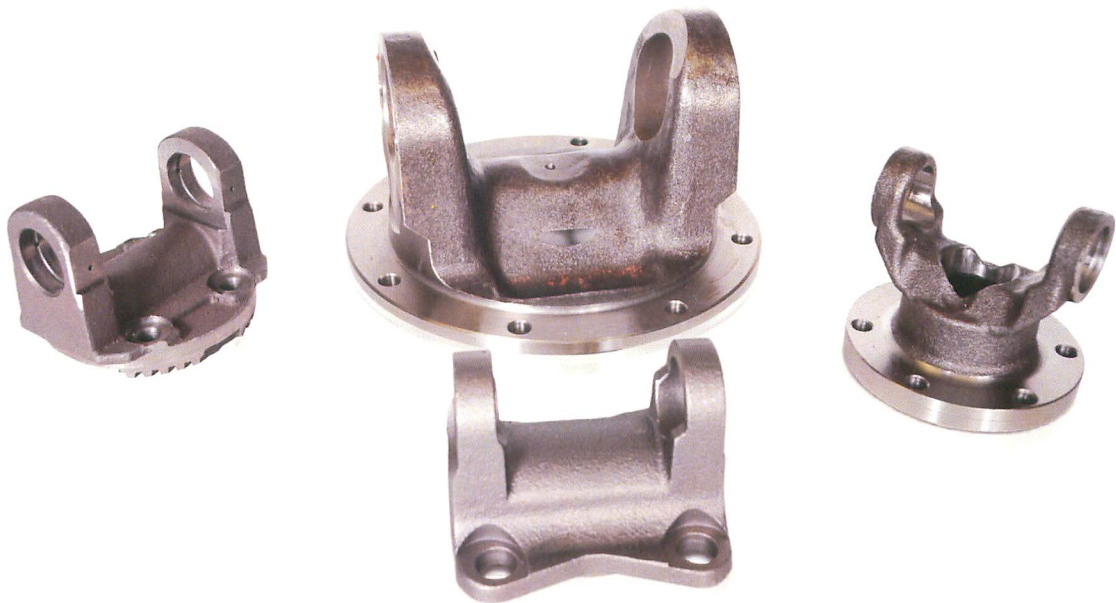


FLANGE YOKES



***LIGHT DUTY / MEDIUM DUTY / HEAVY DUTY
INCLUDING CONVERSION DESIGNS***

How to Use This Section

Determine which type of flange yoke you need by referring to the illustrations and descriptions at the top of each page.

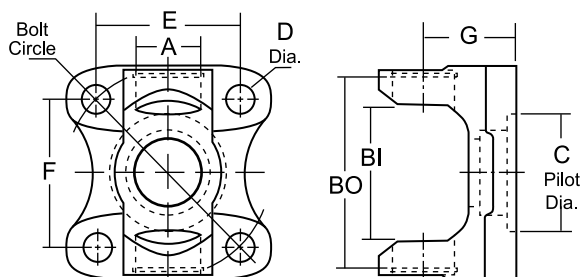
To identify a (Flange Yoke)

1. Determine the yoke type you need listed at the top of each page.
Standard Applications indicate the flange yoke uses round bearings.
Bearing Plate Applications indicate the flange yoke is only used on applications requiring a universal joint mounted by bearing plates.
Conversion Applications indicate the flange yoke is used to convert different designed flanges to fit more common series universal joints.
2. Determine the **Series** of the yoke. For Standard, Bearing Plate & Conversion applications this can be determined by measuring the bearing diameter (**A**) and snap ring lockup (**B**).
3. Determine the **Pilot Diameter** & Style (M - Male / F - Female) (**C**).
4. Next determine the number of **Holes** & **Bolt Hole Dimension (D)**, followed by the Bolt Hole Pattern (**E & F**)

Centerline to Flange End (G) dimensions & Bolt Circle are also included for additional identification.

RDL Part No.	Yoke Type	A Bearing Dia.	BI / BO U-Joint Lockup	C Pilot Dia.	Bolt Hole Dim.				CL to Flng End	G Bolt Circle
					Holes	D	E	F		
1350 Series					Use RDL Kit - K178					
R3-2-1579	Type 1	1.188	3.622-(O)	2.000-F	4	.500	3.000	3.000	1.563	4.250
R3-2-119	Type 1	1.188	3.622-(O)	2.750-M	4	.438	2.875	2.406	1.563	3.750

FLANGE YOKE (Standard Applications)

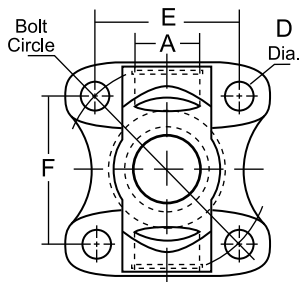


Type 1

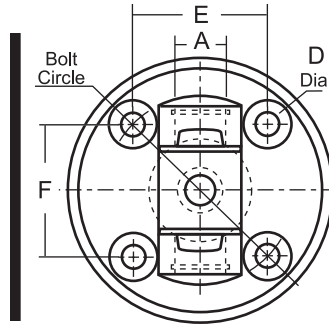
RDL Part No.	Yoke Type	A Bearing Dia.	BI / BO U-Joint Lockup	C Pilot Dia.	Bolt Hole Dim.			G CL to Flng End	Bolt Circle	
					Holes	D	E			F
1000 Series					Use RDL Kit - K170 or ATV500					
R10-2-10775B**	Type 1	0.938	1.500-(I)	2.125-M	4	.325	2.110	1.770	1.302	2.750
R10-2-29**	Type 1	0.938	1.500-(I)	2.250-M	4	.312	2.110	1.770	1.562	2.750
2R Series					Use RDL Kit - K2011					
R2R-2-293	Type 1	1.000	2.339-(I)	2.375-M	4	.380	2.389	2.002	1.438	3.120
1210 Series					Use RDL Kit - K443					
R2-2-1049	Type 1	1.063	2.437-(O)	2.000-F	4	.484	2.469	2.469	1.625	3.500
1210 Series (Conversion Applications)					Use RDL Kit - K443					
R2-2-2323	Type 1	1.063	2.437-(O)	1.809-M	4	.328	2.167	2.167	1.500	3.063
R2-2-899	Type 1	1.063	2.437-(O)	2.250-M	4	.328	2.106	1.766	1.484	2.750
R2-2-1050	Type 1	1.063	2.437-(O)	2.875-F	4	.413	2.784	2.784	1.625	3.937
1310 Series					Use RDL Kit - K153					
R2-2-939	Type 1	1.063	3.217-(O)	2.000-F	4	.484	2.469	2.469	1.625	3.500
R2-2-1379	Type 1	1.063	3.217-(O)	2.000-F	4	.484	3.000	3.000	1.625	4.250
R2-2-329	Type 1	1.063	3.217-(O)	2.375-M	4	.375	2.390	2.015	1.375	3.125
R2-2-459	Type 1	1.063	3.217-(O)	2.375-M	4	.375	2.390	2.015	1.625	3.125
R2-2-1949	Type 1	1.063	3.217-(O)	2.558-M	4	.484	2.651	2.651	1.781	3.750
R2-2-479	Type 1	1.063	3.217-(O)	2.750-M	4	.438	2.875	2.412	1.375	3.750

** New addition to MC0318-2 catalog

FLANGE YOKE (Standard Applications)



Type 1



Type 8

RDL Part No.	Yoke Type	A Bearing Dia.	BI / BO U-Joint Lockup	C Pilot Dia.	Bolt Hole Dim.			G CL to Flng End	Bolt Circle
					Holes	D	E		

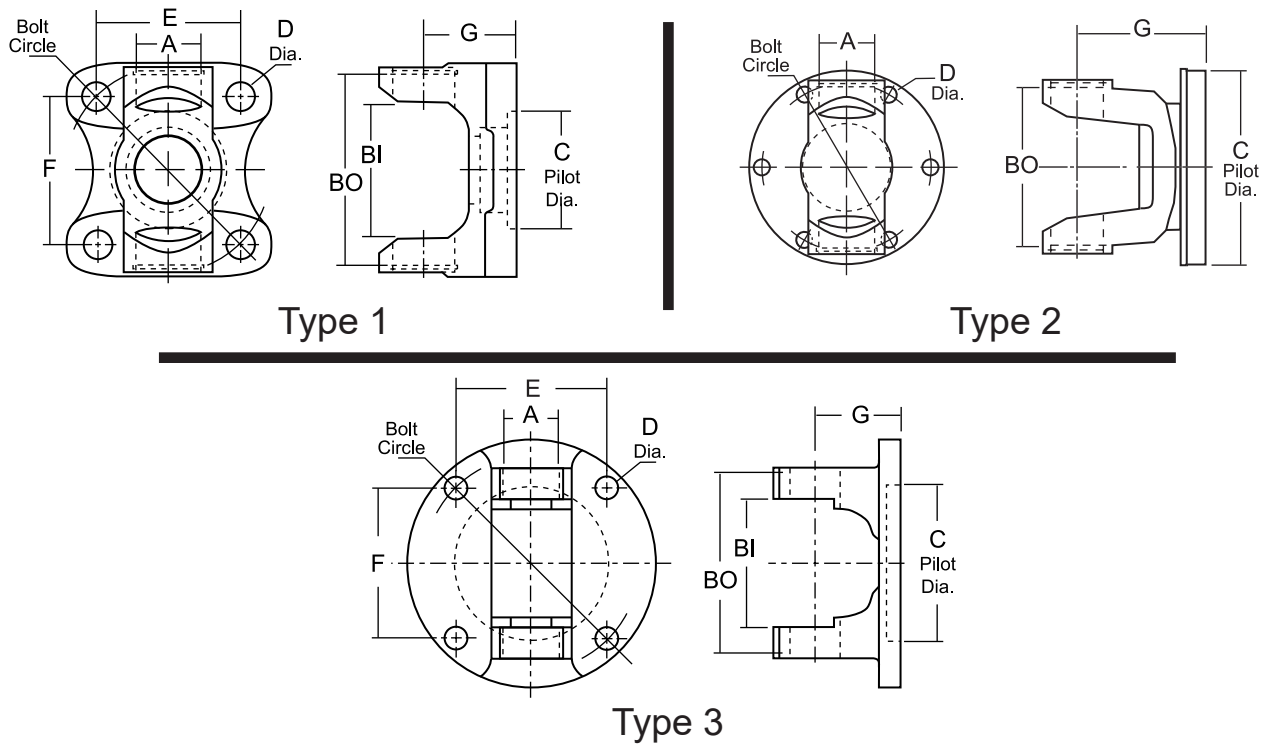
1310 Series (Conversion Applications) cont.

Use RDL Kit - K153

R2-2-3173	Type 1	1.063	3.217-(O)	1.770-M	4	.406	2.677	2.677	1.625	3.781
									*Mazda Bolt Pattern	
R2-2-799	Type 1	1.063	3.217-(O)	1.809-M	4	.328	2.520	2.202	1.375	3.343
									*Toyota Bolt Pattern	
R2-2-799-1	Type 1	1.063	3.217-(O)	1.809-M	4	.406	2.358	2.358	1.375	3.330
									*Toyota Bolt Pattern	
R2-2-799-2	Type 1	1.063	3.217-(O)	1.809-M	4	.406	2.520	2.202	1.375	3.340
									*Toyota Bolt Pattern	
R2-2-799-3	Type 1	1.063	3.217-(O)	1.809-M	4	.406	2.696	2.364	1.563	3.575
									*Toyota Bolt Pattern	
R2-2-799-4	Type 1	1.063	3.217-(O)	1.809-M	4	.445	2.596	2.596	1.563	3.670
									*Toyota Bolt Pattern	
R2-2-4811	Type 1	1.063	3.217-(O)	1.849-M	4	.406	2.358	2.358	1.375	3.330
									*BMW Bolt Pattern	
R2-2-3201	Type 8	1.063	3.217-(O)	2.163-F	4	.490	2.780	2.780	2.125	3.938
									*Jeep Stake-In Bolt Pattern	
R2-2-3200	Type 1	1.063	3.217-(O)	2.163-F	4	.490	3.200	3.200	2.125	4.500
									*Jeep Stake-In Bolt Pattern	
R2-2-3100	Type 1	1.063	3.217-(O)	2.363-M	4	.438	2.390	2.015	1.625	3.125
									*Jeep Cage & Ball Housings	
R2-2-3192	Type 1	1.063	3.217-(O)	2.363-M	4	.393	2.390	2.015	1.625	3.125
									*Land Rover Discovery Bolt Pattern	
R2-2-1519	Type 1	1.063	3.217-(O)	2.563-M	4	.406	2.706	1.967	1.625	3.346
									*Isuzu Bolt Pattern	
R2-2-3202**	Type 1	1.063	3.217-(O)	2.633-F	4	.475	3.060	3.060	1.875	4.328
									*Dodge Staked-In Bolt Pattern	
R2-2-3149	Type 1	1.063	3.217-(O)	2.875-F	4	.413	2.784	2.784	1.625	3.937
									*GM Cage & Ball Housings	

** New addition to MC0318-2 catalog

FLANGE YOKE (Standard Applications)



RDL Part No.	Yoke Type	A Bearing Dia.	BI / BO U-Joint Lockup	C Pilot Dia.	Bolt Hole Dim.			G CL to Flng End	Bolt Circle
					Holes	D	E		

1310 Series (Conversion Applications) cont.

Use RDL Kit - K153

R2-2-3185	Type 2	1.063	3.217-(O)	3.819-M	6	.328	—	—	2.656	3.375
R2-2-3101 ^{HA}	Type 2	1.063	3.217-(O)	3.914-M	6	.328	—	—	2.656	3.395
R2-2-3102 ^{HA}	Type 2	1.063	3.217-(O)	4.093-M	6	.344	—	—	2.656	3.589
R2-2-3108^{HA**}	Type 2	1.063	3.217-(O)	3.914-M	8	.328	—	—	2.656	3.390

*Jeep JK Cage & Ball Housings

1330 Series

Use RDL Kit - K1203 or K213

R2-2-949	Type 1	1.063	3.622-(O)	2.000-F	4	.484	2.469	2.469	1.625	3.500
R2-2-1369	Type 1	1.063	3.622-(O)	2.000-F	4	.500	3.000	3.000	1.688	4.250
R2-2-1879	Type 1	1.063	3.622-(O)	2.161-F	4	.480	2.784	2.784	1.875	3.937

1330 Series (Conversion Applications)

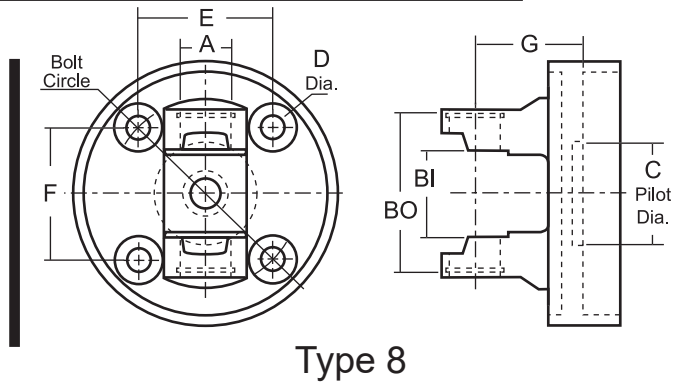
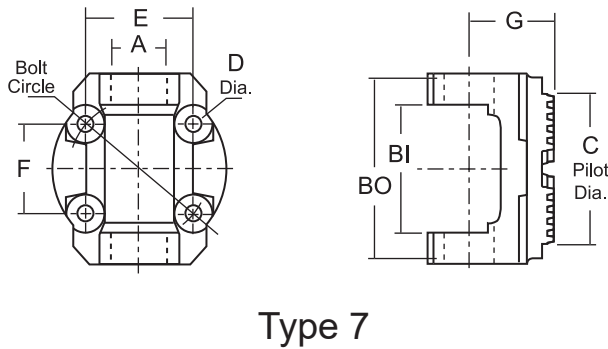
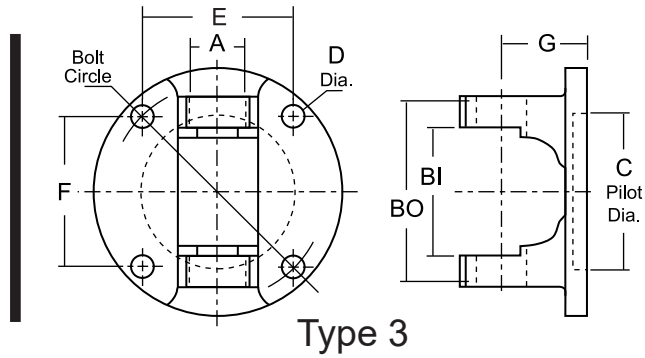
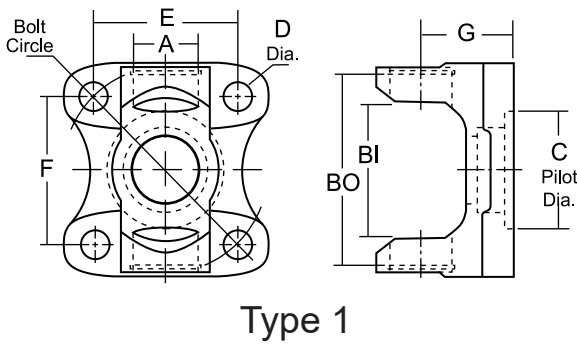
Use RDL Kit - K1203 or K213

R2-2-1399	Type 3	1.063	3.622-(O)	3.125-F	4	.453	3.000	3.000	1.688	4.250
R2-2-3189	Type 2	1.063	3.622-(O)	3.625-M	4	.418	3.150	3.150	3.438	4.455

*Saginaw Bolt Pattern

*Hummer H3 & GMC Colorado Cage & Ball Housings

FLANGE YOKE (Standard Applications)



RDL Part No.	Yoke Type	A Bearing Dia.	BI / BO U-Joint Lockup	C Pilot Dia.	Bolt Hole Dim.				G CL to Flng End	Bolt Circle
					Holes	D	E	F		

430 Series (Staked-In Applications)*

Use RDL Kit - 430-14

414-2-3350	Type 1	1.066	1.780-(I)	2.163-F	4	.490	3.200	3.200	2.125	4.500
										*Jeep Bolt Pattern
414-2-3351	Type 8	1.066	1.780-(I)	2.163-F	4	.490	2.780	2.780	2.125	3.938
										*Jeep Bolt Pattern

3R Series

Use RDL Kit - K3147

R3R-2-675	Type 1	1.125	2.563-(I)	2.163-F	4	.502	2.783	2.783	1.938	3.938
R3R-2-8268	Type 3	1.125	2.563-(I)	3.125-F	4	.453	3.000	3.000	1.703	4.250
R3R-2-9801	Type 7	1.125	2.563-(I)	Serrated	4	.335	2.235	1.875	2.087	2.913

2.5R Series

Use RDL Kit - K1510

R25-2-422	Type 1	1.142	2.047-(I)	1.809-M	4	.328	2.520	2.202	1.438	3.340
R25-2-422A	Type 1	1.142	2.047-(I)	1.809-M	4	.406	2.358	2.358	1.768	3.334
R25-2-422B	Type 1	1.142	2.047-(I)	1.809-M	4	.406	2.364	2.696	1.768	3.586

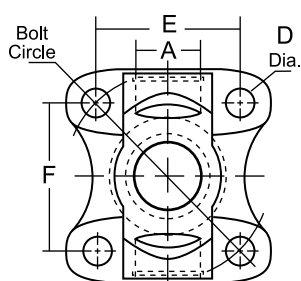
2.5R Series (You Drill It - No Holes)

Use RDL Kit - K1510

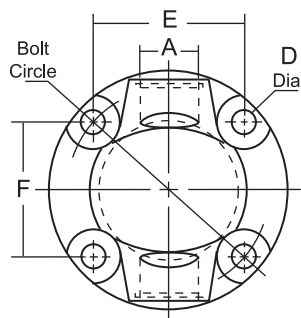
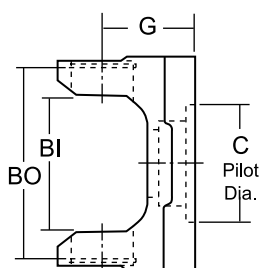
R25-2-422ALH	Type 1	1.142	2.047-(I)	1.809-M	0	solid	solid	solid	1.768	solid
--------------	--------	-------	-----------	---------	---	-------	-------	-------	-------	-------

*Toyota Pilot, no bolt holes. Drill to suit your needs

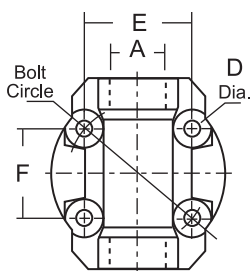
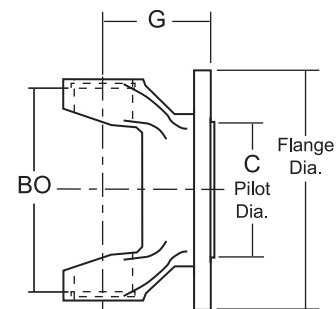
FLANGE YOKE (Standard Applications)



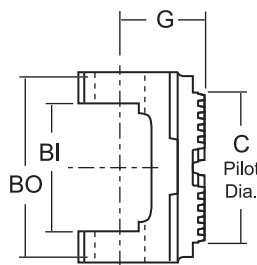
Type 1



Type 6



Type 7



RDL Part No.	Yoke Type	A Bearing Dia.	BI / BO U-Joint Lockup	C Pilot Dia.	Bolt Hole Dim.			G CL to Flng End	Bolt Circle
					Holes	D	E		

1350 Series

Use RDL Kit - K178

R3-2-1579	Type 1	1.188	3.622-(O)	2.000-F	4	.500	3.000	3.000	1.563	4.250
R3-2-1699	Type 1	1.188	3.622-(O)	2.680-F	4	M12x1.75	3.000	3.000	1.500	4.250
R3-2-16990	Type 1	1.188	3.622-(O)	2.680-F	4	.470	3.000	3.000	1.500	4.250
R3-2-119	Type 1	1.188	3.622-(O)	2.750-M	4	.438	2.875	2.406	1.563	3.750
R3-2-5913	Type 1	1.188	3.622-(O)	2.859-F	4	.500	3.182	3.182	2.000	4.500
R3-2-8359	Type 7	1.188	3.622-(O)	Serrated	4	.335	2.235	1.875	2.087	2.913
R3-2-9311**	Type 7	1.188	3.622-(O)	Serrated	4	.438	2.788	2.788	2.438	3.938

1410 Series

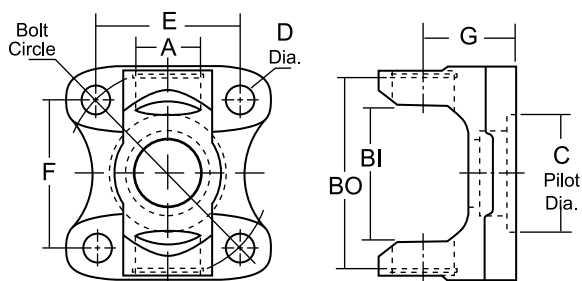
Use RDL Kit - K160

R3-2-1819	Type 1	1.188	4.182-(O)	2.000-F	4	.500	3.000	3.000	1.625	4.250
R3-2-5207 ^{HA}	Type 6	1.188	4.182-(O)	2.000-F	4	.500	3.000	3.000	3.375	4.250
R3-2-3204	Type 1	1.188	4.182-(O)	2.680-F	4	M12x1.75	3.000	3.000	1.625	4.250
R3-2-6691 ^{HA}	Type 6	1.188	4.182-(O)	2.750-M	4	.438	2.688	2.688	3.375	3.750
R3-2-159	Type 1	1.188	4.182-(O)	2.750-M	4	.438	2.875	2.406	1.688	3.750
R3-2-6683 ^{HA}	Type 6	1.188	4.182-(O)	2.750-M	4	.438	2.875	2.406	3.375	3.750
R3-2-3700	Type 6	1.188	4.182-(O)	70mm-M	4	.480	3.018	2.538	2.167	3.940
R3-2-1839	Type 1	1.188	4.182-(O)	2.937-F	4	.510	3.359	3.359	2.000	4.750
R3-2-6681 ^{HA}	Type 6	1.188	4.182-(O)	3.125-F	4	.500	3.000	3.000	3.375	4.250
R3-2-2500	Type 1	1.188	4.182-(O)	3.750-M	4	.510	3.359	3.359	2.094	4.750
R3-2-429	Type 1	1.188	4.182-(O)	3.750-M	4	.500	3.640	3.031	2.000	4.750

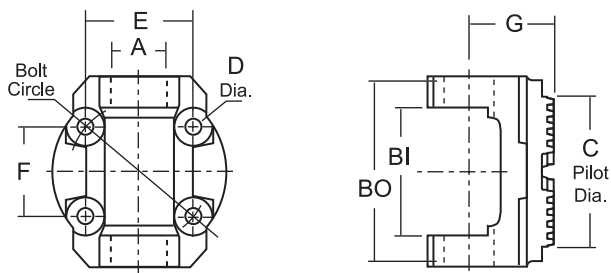
** New addition to MC0318-2 catalog
HA - High angle option - 30° of operation



FLANGE YOKE (Standard Applications)



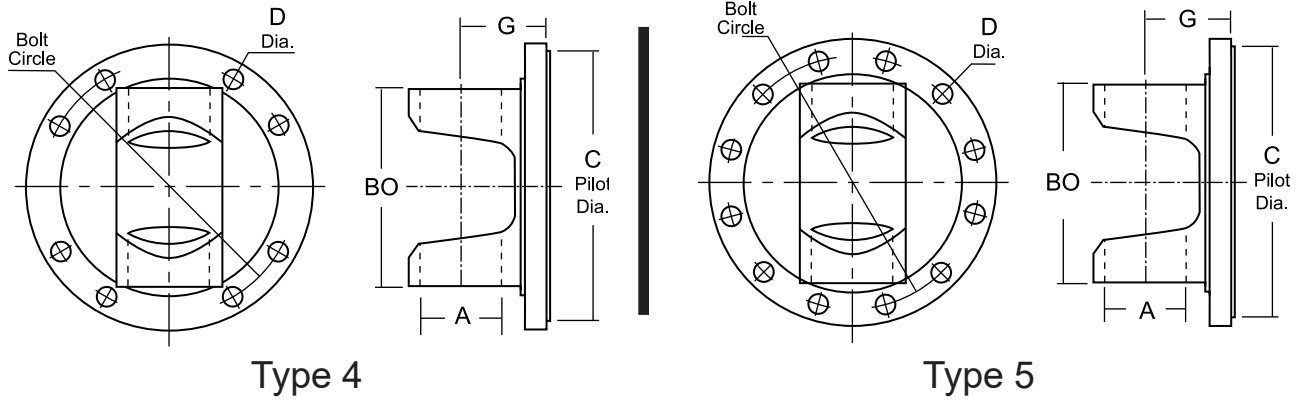
Type 1



Type 7

RDL Part No.	Yoke Type	A Bearing Dia.	BI / BO U-Joint Lockup	C Pilot Dia.	Bolt Hole Dim.			G CL to Flng End	Bolt Circle	
					Holes	D	E			F
1480 Series		Use RDL Kit - K188								
R3-2-3205	Type 1	1.375	4.182-(O)	2.680-F	4	M12x1.75	3.000	3.000	1.797	4.250
R3-2-479	Type 1	1.375	4.182-(O)	3.750-M	4	.500	3.640	3.031	2.000	4.750
1485 Series - AAM		Use RDL Kit - K1485								
R3-2-2502	Type 1	1.375	4.177-(O)	3.750-M	4	.500	3.359	3.359	2.250	4.750
1550 Series		Use RDL Kit - K155								
R4-2-669	Type 1	1.375	4.966-(O)	3.750-M	4	.500	3.640	3.031	2.000	4.750
1555 Series - AAM		Use RDL Kit - K1555								
R4-2-8046	Type 7	1.375	4.960-(O)	Serrated	4	.413	3.359	3.359	2.750	4.750
R4-2-8047	Type 1	1.375	4.960-(O)	3.750-M	4	.500	3.359	3.359	2.250	4.750

FLANGE YOKE (Bearing Plate Applications)



RDL Part No.	Yoke Type	A Bearing Dia.	BI / BO U-Joint Lockup	C Pilot Dia.	Bolt Hole Dim.			G CL to Flng End	Bolt Circle	
					Holes	D	E			F
1610 Series		Use RDL Kit - K279								
R5-2-279	Type 4	1.875	5.312-(O)	6.625-M	8	.375	—	—	2.750	6.125
1710 Series		Use RDL Kit - K280								
R6-2-749	Type 4	1.938	6.094-(O)	7.750-M	8	.375	—	—	3.000	7.250
1810 Series		Use RDL Kit - K281								
R6.5-2-329	Type 5	1.938	7.547-(O)	7.750-M.	12	.438	—	—	3.375	7.250

PART NUMBER	PG	PART NUMBER	PG
414-2-3350	6	R2R-2-293	3
414-2-3351	6	R3-2-119	7
R10-2-29**	3	R3-2-159	7
R10-2-10775B**	3	R3-2-429	7
R2-2-329	3	R3-2-479	8
R2-2-459	3	R3-2-1579	7
R2-2-479	3	R3-2-1699	7
R2-2-799	4	R3-2-1819	7
R2-2-799-1	4	R3-2-1839.....	7
R2-2-799-2	4	R3-2-2500.....	7
R2-2-799-3	4	R3-2-2502.....	8
R2-2-799-4	4	R3-2-3204.....	7
R2-2-899	3	R3-2-3205.....	8
R2-2-939	3	R3-2-3700	7
R2-2-949	5	R3-2-5207.....	7
R2-2-1049	3	R3-2-5913	7
R2-2-1050	3	R3-2-6681.....	7
R2-2-1369	5	R3-2-6683.....	7
R2-2-1379	3	R3-2-6691.....	7
R2-2-1399	5	R3-2-8359.....	7
R2-2-1519	4	R3-2-9311**	7
R2-2-1879	5	R3-2-16990.....	7
R2-2-1949	3	R3R-2-675.....	6
R2-2-2323.....	3	R3R-2-8268	6
R2-2-3100	4	R3R-2-9801	6
R2-2-3101	5	R4-2-669	8
R2-2-3102	5	R4-2-8046.....	8
R2-2-3108**	5	R4-2-8047.....	8
R2-2-3149	4	R5-2-279	9
R2-2-3173	4	R6-2-749	9
R2-2-3185	5	R6.5-2-329	9
R2-2-3189	5		
R2-2-3192	4		
R2-2-3200.....	4		
R2-2-3201.....	4		
R2-2-3202**	4		
R2-2-4811	4		
R25-2-422	6		
R25-2-422A	6		
R25-2-422ALH	6		
R25-2-422B	6		

** New addition to MC0318-2 catalog



MANUFACTURER OF DRIVELINE COMPONENTS
1500 11TH AVENUE ROCKFORD, ILLINOIS 61104
PHONE (815) 962-1411 FAX (815) 965-4857
RockfordDriveLine.com