



New Jersey Turnpike Authority (NJTA) 1-4 Widening Program, New Jersey



DRPA/PATCO Sustainability & Efficiency Plan, Camden, NJ



Glassboro – Camden Light Rail Line EIS, Camden, NJ



JFK International Airport, Traffic Engineering, NY



NJT River LINE Light Rail Real Estate Optimization, NJ

mcfa

MCFA brings a **talented team of Certified Planners and Professional Engineers** to infrastructure, energy sustainability and resilience projects who also have vast experience in supporting transportation agencies and the Department of Defense. Additionally, MCFA personnel also bring a wealth of knowledge and expertise to conduct a variety of critical services essential for successful project assessment, planning and development, and program and construction management services.



mcfa Certifications: SDVOB - New York State / SDVOSB - Department of Veterans Affairs / DVOB + SBE + VOB - State of New Jersey / VBE + SBE - Pennsylvania / SDVOB + SBE - PANYNJ / SDVO - Virginia / SDVOSB - Maryland

DUNS: 149814530 | CAGE: 3XKQ6
68 Tanner Street | Haddonfield, NJ 08033 | 856.795.6111



www.mcfaglobal.com

Project 1



New Jersey Turnpike Authority (NJTA) 1-4 Widening Program, NJ

ISSUE:

NJTA has issued a project to widen the Turnpike to three lanes in each direction from Interchanges 1-4 to help alleviate traffic congestion.

SOLUTION:

mcfa, is providing technical support and field management services for the geotechnical investigation. mcfa is acting as the design team's eyes and ears as we investigate the geotechnical profile of the project area.

RESULTS:

A combination of field boring logs and lab analysis of samples will guide the design process, allowing for improvements and recommendations for suitable foundations for bridges, toll plazas and other structures while ensuring roadway stability.

Project 2



New Jersey Turnpike Authority (NJTA), Rehabilitation of Structures, NJ

ISSUE:

NJTA Contract No. T100.584 involves the rehabilitation of Structures E113.00, E113.16, E114.52, and E115.21.

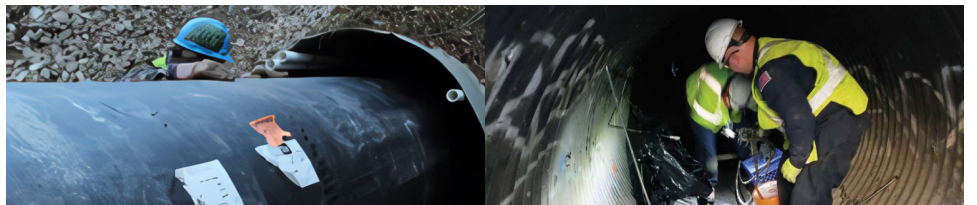
SOLUTION:

mcfa to provide services for the rehabilitation of structures which includes implementation of lane shifts or traffic detours, bridge deck and parapet reconstruction, structural steel repairs, repainting, bearing replacement, concrete repairs, high performance concrete in deck, parapet, and median barrier, joint reconstruction.

RESULTS:

MCFA to provide Critical Path Method (CPM) Scheduling and Computer Aided Design and Drafting (CADD) services for this project.

Project 3



New Jersey Turnpike Authority (NJTA), Culvert Rehabilitation, NJ

ISSUE:

Under Contract No. P200.609, NJTA is rehabilitating three (3) culverts, Culvert MP 115.80, MP 115.80A, and MP 115.81, located in Holmdel Township, Monmouth County, New Jersey.

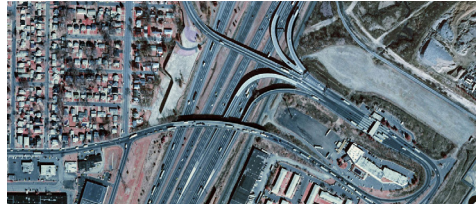
SOLUTION:

mcfa is providing services for the rehabilitation of culverts to assure safety and stability of NJTA roadways and to also ensure hydraulic capacity of the structures.

RESULTS:

MCFA is providing construction inspection services for the rehabilitation of three (3) culverts, Culvert MP 115.80, MP 115.80A, and MP 115.81.

Project 4



New Jersey Turnpike Authority (NJTA), Roadway Lighting Repairs, NJ

ISSUE:

Contract No. T200.575 consists of roadway lighting and power distribution upgrades at New Jersey Turnpike Interchanges 12 and 13.

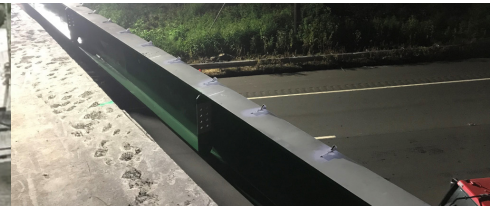
SOLUTION:

mcfa to provide services for the removal of existing Turnpike-owned series connected roadway lighting systems and installation of a multiple phase power distribution system with LED luminaries. New light poles are also proposed for this project.

RESULTS:

MCFA to provide Computer Aided Design and Drafting (CADD) services for this multiple phase power distribution system and LED luminaries project.

Project 5



Garden State Parkway (GSP) Bridge Beam Replacement Structures, NJ

ISSUE:

Contract No. P100.589, Bridge Beam Replacement, consists of the replacement of accident damaged fascia girders at Structures Nos. 6.6S and 154.2N on the Garden State Parkway.

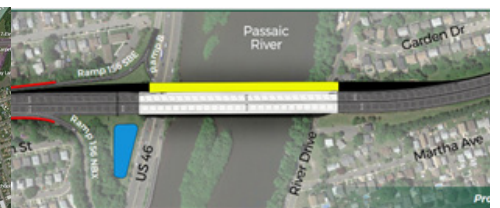
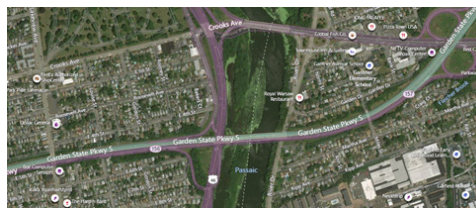
SOLUTION:

In order to successfully complete the project, traffic lanes are being closed and deck replacements are being performed within Type 4 concrete construction barrier enclosures with various joint classes.

RESULTS:

MCFA is providing Computer Aided Design and Drafting (CADD) services including the development of Mylars for this bridge beam replacement project.

Project 6



Garden State Parkway (GSP), Superstructure Replacement/Widening - Bridge No. 158.2, NJ

ISSUE:

GSP Contract No. P100.476 consists of replacing Bridge No. 158.2's existing superstructure with a widened superstructure.

SOLUTION:

mcfa to provide services for this staged construction project to maintain at least three lanes of Northbound traffic on the existing structure. Additionally, The widened roadway will consist of three 12-foot lanes, 12-foot right shoulders and 5-foot left shoulders.

RESULTS:

mcfa to provide construction inspection services for the replacement of Bridge No. 158.2's existing superstructure with a widened superstructure.

Project 7



Glassboro – Camden Light Rail Line EIS, Camden, NJ

ISSUE:

Develop an Environmental Impact Statement (EO #215 EIS) for an 18-mile, 14 station new light rail line project to serve and benefit communities across southern New Jersey.

SOLUTION:

mcfa provided leadership and support in the following areas; community planning, environmental and land/real estate development planning services, project finance, and project implementation strategies.

RESULTS:

EIS for the \$1.8 billion, 18-mile, 14 station new light rail line was successfully completed. This project received a 2021 Distinguished Engineering Award from the NJ Alliance for Action.

Project 8



New Jersey Transit (NJT) River LINE Light Rail Real Estate Optimization, NJ

ISSUE:

New Jersey Transit (NJT) operates a light rail line, the River LINE, connecting Camden to Trenton. Due to a decrease in ridership, and a desire to understand ways to promote growth of adjacent and proximate areas, NJT wished to monetize current real estate assets to provide a revenue stream for NJT.

SOLUTION:

Partnered with NJT staff to bring industry relationships and industry best practice experience in public/private partnership development to create a range of asset capitalization options and site development opportunities for NJT's consideration and execution.

RESULTS:

mcfa Personnel successfully monetized real estate assets and provided a positive revenue stream for NJT. Deliverables included a real property portfolio review, development sites/concepts, industry outreach, marketing, and issuance of an RFQ to maximize and engage a pool of potential developers.

Project 9



DRPA/PATCO Sustainability and Resource Efficiency Plan, Camden, NJ

ISSUE:

Delaware River Port Authority (DRPA) and Port Authority Transit Corporation (PATCO) operating 4 major bridges and a 14 mile rapid transit system, was in need of sustainability and resource efficiency consulting services.

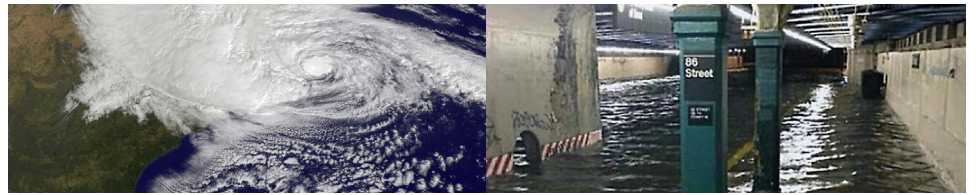
SOLUTION:

mcfa performed due diligence on limited previous sustainability planning efforts, provided guidance to sustainability planning, implementation and management, and also performed specific energy and project evaluation tasks.

RESULTS:

mcfa personnel successfully reviewed and updated previous sustainability efforts, current electricity and procurement processes, prepared Sustainability Strategy and Framework and developed an Energy Consumption Baseline; recommended an Energy Tracking System, and evaluated specific energy and conservation projects.

Project 10



Superstorm Sandy Recovery Plan, *New York, NY*

ISSUE:

Port Authority of New York and New Jersey (PANYNJ) sought a Super Storm Sandy recovery strategy plan, environmental assessments, and future storm damage prevention plan for key PANYNJ assets across all the agency's business lines.

SOLUTION:

mcfa recovery experts held discovery meetings with Authority staff from Business Line Departments, facilities operations, engineering, and maintenance personnel. The meetings focused on operational details, challenges, and needed repairs to put infrastructure back into safe operation until permanent repairs could be made.

RESULTS:

mcfa personnel successfully served as environmental planners and sustainable design and resilience subject matter experts and developed a strategy and approach to maximize FEMA funding and guidelines for full recovery under the Sandy Recovery Program following the Sandy event.

Project 11



John F. Kennedy International Airport, Traffic Engineering (PANYNJ), *NY*

ISSUE:

Minimize disruption to pedestrian and vehicular traffic during pre-construction and construction activities.

SOLUTION:

Create traffic management plans and permits for PANYNJ that offer flexibility and are adaptive to specific locations and construction requirements including critical construction activity sequencing.

RESULTS:

mcfa Personnel was extensively involved in the preparation for and supervision of the field surveys; summarizing traffic, TMC data, manual classification data, and Frontage Dwell Time Survey data to identify the peak hours; and developed traffic volumes for AM, midday and PM peak hours.

Project 12



U.S. Army Resource Efficiency Management (REM) Program, *Various Locations*

ISSUE:

U.S. Army Corps of Engineers, Huntsville District Engineering and Support Center is in need for Resource Efficiency Managers (REMs) at Department of Defense campuses. The program concentrates on energy savings, energy demand reduction, and renewable energy solutions.

SOLUTION:

mcfa REMs are evaluating existing and new facilities for potential utility and energy savings opportunities at multiple U.S. Army campuses and installations nationwide. mcfa's scope includes energy management planning and implementation for this \$40 million program.

RESULTS:

mcfa is analyzing and executing the redesign and programming of energy management and control systems for optimal efficiency. To date, mcfa's efforts directly identified over \$17M in savings and assisted in the identification/execution of over \$26M of alternatively funded/financeable projects.



Energy Assurance Master Plan - Joint Base McGuire-Dix-Lakehurst, NJ

ISSUE:

Create a 30 day utility resiliency capability to enable robust disaster response and recovery support to Philadelphia and New York City by key missions such as, law enforcement, U.S. Coast Guard, FEMA, and other emergency response entities.

SOLUTION:

mcfa, applied its experience with Federal Government P3 authorities and used its contacts within the energy industry and New Jersey regulatory authorities to coordinate a comprehensive and attractive business opportunity which benefits the DoD, private industry, and the State.

RESULTS:

mcfa successfully developed an Energy Resilience Assessment and Energy Master Plan for utility distribution and energy generation strategies to make the Base energy resilient in times when normal energy delivery systems are down.



Construction Management at The Navy Yard, Philadelphia, PA

ISSUE:

Aging Infrastructure reached the end of its lifecycle at The Navy Yard which included insufficient electrical load capacity.

SOLUTION:

mcfa personnel provided planning, environmental permitting, and construction oversight of a sophisticated and time-critical utility distribution modification project. The project consisted of a large number of environmental and utility service continuity improvement projects integrated into a historic waterfront site.

RESULTS:

mcfa delivered the best possible project outcome to the Navy and PIDC. The additional electrical load capacity will support Navy Yard's expansion and utility resiliency well into the future.

mcfa Services Matrix - mcfa has the expertise to assist with any of the following services on projects:

| mcfa Projects / Expertise | P1 | P2 | P3 | P4 | P5 | P6 | P7 | P8 | P9 | P10 | P11 | P12 | P13 | P14 |
|-------------------------------------|----|----|----|----|----|----|----|----|----|-----|-----|-----|-----|-----|
| Project Development PMP/QMP/DMP/CMP | ✓ | | | | | | ✓ | | ✓ | ✓ | ✓ | ✓ | ✓ | ✓ |
| Land/Real Estate (ROW) | ✓ | | | | | | ✓ | ✓ | | | | | | |
| CEI / Geotechnical | ✓ | | ✓ | | | ✓ | | | | | | | | |
| Project Controls/Risk Mgt. | | ✓ | | | | | | | ✓ | | | | | ✓ |
| CADD/GIS | | ✓ | | ✓ | ✓ | | | | | | | | | |
| Environmental/Permitting | | | | | | | ✓ | | | ✓ | ✓ | ✓ | ✓ | ✓ |
| Resiliency/Sustainability | | | | | | | | | ✓ | ✓ | | ✓ | ✓ | ✓ |
| Traffic Engineering / MOT | ✓ | ✓ | ✓ | ✓ | ✓ | ✓ | | | | | ✓ | | | |
| Public/Stakeholder Outreach | ✓ | | | | | | ✓ | ✓ | | ✓ | ✓ | ✓ | ✓ | ✓ |
| RFQ/RFP Development | | | | | | | | ✓ | ✓ | | | | | |
| Utility Coord./Relocation | | | | | | | | | | | | ✓ | ✓ | ✓ |



MCFA NAICS CODES

- 236220 Commercial and Institutional Building Construction
- 531390 Other Activities Related to Real Estate
- 541310 Architectural Services
- 541320 Landscape Architectural Services
- 541330 Engineering Services
- 541512 Computer Systems Design Services
- 541519 Other Computer Related Services
- 541611 Administrative Management & General Management Consulting
- 541618 Other Management Consulting Services
- 541620 Environmental Consulting Services
- 541690 Other Scientific and Technical Consulting Services
- 541712 Research & Development in the Physical, Engineering & Life Sciences
- 541990 All Other Professional, Scientific, and Technical Services
- 561110 Office Administrative Services
- 561210 Facilities Support Services

TRUSTED CLIENTS

