

Deluxe 80 Single Stage Furnace

FLEXIBILITY

- 40" high for ease of installation
- Factory shipped for natural gas, with Propane Gas conversion kits available
- Four position - upflow/downflow/horizontal installation
- Category I venting
- Three position inducer capability
- Common venting with water heater

SERVICE

- Self diagnostics
- Entire blower assembly mounted on rails

COMFORT

- Adjustable timed blower OFF delay
- 24 and 115 VAC humidifier terminal
- Electronic air cleaner terminal

EFFICIENCY

- 80% AFUE efficiency range.
- Single stage gas valve operation
- Single stage integrated control
- Multispeed, prelubricated PSC motors
- Induced draft blower
- In-shot burners

QUALITY

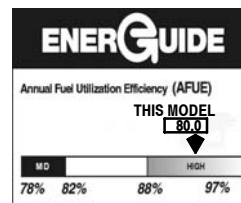
- RPJ III Aluminized steel heat exchanger
- High temperature limit control prevents overheating
- Direct ignition with Silicon Nitride ignitor
- Flame roll-out sensors standard
- Louvered doors
- One piece prepainted steel cabinet
- Masonry chimney adapter available
- 5 years limited parts warranty
- 1 year No Hassle Replacement limited warranty



Illustrations and photographs are only representative.
Some product models may vary.

▲ WARNING

This furnace is not designed for use in mobile homes, trailers, or recreational vehicles. Such use could result in property damage and/or death.



UPFLOW/DOWNFLOW/HORIZONTAL (NATURAL GAS)					
Model Number	Heat Exchangers *	Dimensions H x W x D (In.)	Input (MBTUH)	Efficiency AFUE +	Cooling Capacity @ .5 in wc
H8MPN050B12B	20 year	40 x 15 ¹ / ₂ x 29	50,000	80%	1.5 - 3.0 TON
H8MPN075B12B	20 year	40 x 15 ¹ / ₂ x 29	75,000	80%	1.5 - 3.0 TON
H8MPN075F16B	20 year	40 x 19 ¹ / ₈ x 29	75,000	80%	2.5 - 4.0 TON
H8MPN100F16B	20 year	40 x 19 ¹ / ₈ x 29	100,000	80%	2.0 - 3.5 TON
H8MPN100F20B	20 year	40 x 19 ¹ / ₈ x 29	100,000	80%	3.5 - 5.0 TON
H8MPN100J20B	20 year	40 x 22 ³ / ₄ x 29	100,000	80%	3.5 - 5.0 TON
H8MPN125J20B	20 year	40 x 22 ³ / ₄ x 29	125,000	80%	3.5 - 5.0 TON
H8MPN150J20B	20 year	40 x 22 ³ / ₄ x 29	150,000	80%	3.5 - 5.0 TON

* LIMITED 20 YEAR WARRANTY

FURNACE SPECIFICATIONS MULTI-POSITION

Model Number NATURAL GAS	*8MPN							
	050B12	075B12	075F16	100F14	100F20	100J20	125J20	150J20
INPUT (btuh)	50,000	75,000	75,000	100,000	100,000	100,000	125,000	150,000
HTG. CAP. (btuh)	40,000	60,000	60,000	81,000	81,000	81,000	101,000	121,000
AFUE % (ICS)	80%	80%	80%	80%	80%	80%	80%	80%
TEMP. RISE DEGREES (°F/°C)	35-65/19-36	30-60/17-33	30-60/17-33	35-65/19-36	35-65/19-36	35-65/19-36	35-65/19-36	35-65/19-36
VOLTS/PH/Hz	115/1/60	115/1/60	115/1/60	115/1/60	115/1/60	115/1/60	115/1/60	115/1/60
MIN./MAX. VOLTAGE	104/127	104/127	104/127	104/127	104/127	104/127	104/127	104/127
RATING PLATE AMPS.	9.7	9.0	9.7	9.2	12.0	12.0	12.0	13.5
TRANSFORMER (V.A.)	40	40	40	40	40	40	40	40
GAS PIPE SIZE (IN.)	1/2	1/2	1/2	1/2	1/2	1/2	1/2	1/2
FLUE COLLAR SIZE	4"	4"	4"	4"	4"	4"	4"	4"
COOLING CAP.	3.0	3.0	4.0	3.5	5.0	5.0	5.0	5.0
SHIPPING WEIGHT (LBS.)	128	134	140	140	156	166	172	188
DIMENSIONS (in.) HEIGHT	40	40	40	40	40	40	40	40
WIDTH X DEPTH	15 1/2 x 29	15 1/2 x 29	19 1/8 x 29	19 1/8 x 29	19 1/8 x 29	22 3/4 x 29	22 3/4 x 29	22 3/4 x 29

(ICS) = Isolated Combustion System

ACCESSORIES

Model Number	Description	Used With Models
TWINNING KIT		
NAHA004WK	Twinning kit. Allows operation of two identical-size model furnaces.	ALL *8MPN FURNACES
GAS CONVERSION KITS		
NAHA001LP (1172958 ⁺)	Natural gas to Propane conversion Kit. Allows field conversion to Propane gas.	ALL *8MPN FURNACES
NAHA001NG (1172960 ⁺)	Propane to natural gas conversion kit. Allows field conversion to natural gas. (Single Stage)	ALL *8MPN FURNACES
FILTER KITS		
NAHA001FF NAHA001FP	External filter frame. 16" x 25"	Side Return (All Furnaces) Bottom Return (All "F" 19 1/8" Furnaces under 1600 CFM)
NAHA002FF NAHA002FP	Bottom return filter frame kit 20" x 25".	(All "J" 22 3/4" Furnaces)
NAHA003FF NAHA003FP	Bottom or side return filter frame kit 14" x 25".	(All "B" 15 1/2" Furnaces)
NAHA001TK	Duct Standoff Filter Kit. To adapt 20" x 25" filter for single side return.	Side Return (All single return applications with 1600 CFM or greater) Bottom Return (All "F" 19 1/8" Furnaces under 1600 CFM)
COMBUSTIBLE FLOOR SUBBASES		
NAHH001SB	Subbase Furnace ONLY: All 15 1/2" wide furnace models	
NAHH002SB	Subbase Furnace ONLY: All 19 1/4" wide furnace models	*8MPN075-100F
NAHH003SB	Subbase Furnace ONLY: All 22 3/4" wide furnace models	*8MPN100-125J
NAHH004SB	Subbase Furnace w/15 1/2" cased coil	Counterflow furnace *8MPN050-075B
NAHH005SB	Subbase Furnace w/19 1/4" cased coil	Counterflow furnace *8MPN075-100F
NAHH006SB	Subbase Furnace w/22 3/4" cased coil	Counterflow furnace *8MPN100-125J
MASONRY CHIMNEY ADAPTER		
NAHA001DH	Chimney adapter (6")	*8MPN050, 075, 100
NAHA002DH	Chimney adapter (7")	*8MPN125 & 150
VENT GUARD		
NAHA002VC	Downflow vent guard	All furnaces in downflow applications
COIL ADAPTER		
NAHA001CA	Coil Adapter for Downflow Furnaces	All Multi- Position Furnaces in the Downflow Application
WARNING LABEL REPLACEMENT KIT		
NAHA002WL	To replace Warning Labels, Operating Instructions & Wiring Labels on Blower Door when needed	*8MPN

⁺ Fast part number

* Denotes Brand (C, H, T)

BLOWER PERFORMANCE MULTI-POSITION

Model Number	*8MPN							
	050B12 (1)(7)	075B12 (1)(7)	075F16 (1)(3)(7)	100F14 (1)(7)	100F20 (2)(4)(7)	100J20 (2)(7)	125J20 (2)(5)(7)	150J20 (2)(6)(7)
BLOWER INCHES (DIA. x WIDTH)	11x8	11x8	11 x 10	11 x 10	11 x 10	11 x 10	11x10	12x12
MOTOR H.P. (TYPE)	1/2/PSC	1/2/PSC	1/2/PSC	1/2/PSC	1/2/PSC	1/2/PSC	1/2/PSC	3/4/PSC
MOTOR SPEEDS	4	4	4	4	4	4	4	4

Circulation Air Blower Data

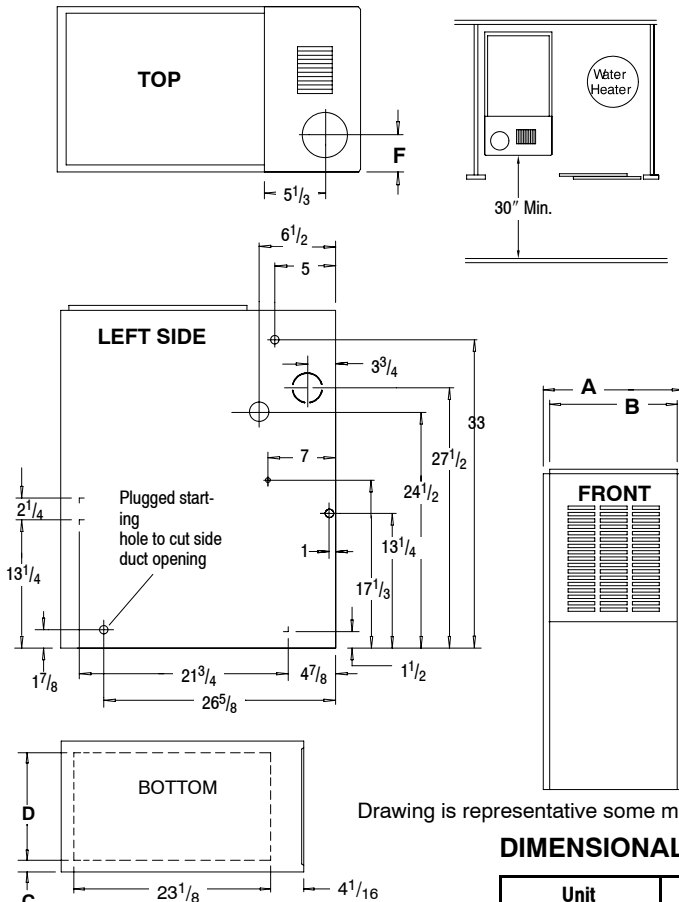
.10 ESP IN. W.C.	LOW	472	695	598	770	831	773	860	1656
	MEDIUM LOW	704	963	841	949	1125	1045	1149	1915
	MEDIUM HIGH	1167	1220	1427	1328	1582	1453	1666	2168
	HIGH	1387	1559	1861	1760	2216	2147	2147	2385
.20 ESP IN. W.C.	LOW	419	670	499	709	823	766	848	1620
	MEDIUM LOW	671	946	795	911	1124	1029	1158	1851
	MEDIUM HIGH	1135	1202	1406	1282	1585	1461	1622	2129
	HIGH	1338	1511	1816	1718	2198	2142	2137	2360
.30 ESP IN. W.C.	LOW	365	644	400	648	814	755	836	1583
	MEDIUM LOW	638	928	748	873	1123	1037	1158	1787
	MEDIUM HIGH	1102	1183	1384	1235	1588	1469	1577	2090
	HIGH	1288	1463	1770	1675	2179	2128	2126	2335
.40 ESP IN. W.C.	LOW	328	616	345	596	798	737	821	1545
	MEDIUM LOW	605	901	708	823	1120	1037	1149	1742
	MEDIUM HIGH	1069	1151	1364	1175	1583	1469	1569	2044
	HIGH	1241	1412	1724	1613	2127	2113	2137	2274
.50 ESP IN. W.C.	LOW	290	588	289	544	781	712	805	1507
	MEDIUM LOW	572	873	667	772	1117	1020	1140	1697
	MEDIUM HIGH	1035	1118	1343	1115	1577	1459	1561	1997
	HIGH	1194	1361	1677	1551	2074	2078	2148	2212
.60 ESP IN. W.C.	LOW	250	564	263	501	749	683	782	1449
	MEDIUM LOW	547	822	625	728	1085	1013	1111	1647
	MEDIUM HIGH	987	1068	1299	1076	1559	1446	1539	1927
	HIGH	1132	1300	1612	1478	1992	2029	2035	2149
.70 ESP IN. W.C.	LOW	209	540	236	457	717	647	758	1390
	MEDIUM LOW	522	771	582	684	1053	979	1081	1596
	MEDIUM HIGH	939	1017	1254	1036	1541	1424	1516	1856
	HIGH	1070	1239	1547	1404	1909	1963	1922	2085
.80 ESP IN. W.C.	LOW	---	502	---	409	663	603	710	1301
	MEDIUM LOW	483	723	530	628	1009	942	1045	1521
	MEDIUM HIGH	880	959	1192	966	1457	1400	1472	1755
	HIGH	1004	1161	1454	1310	1827	1892	1845	1992
.90 ESP IN. W.C.	LOW	---	463	---	361	609	554	661	1212
	MEDIUM LOW	443	675	477	572	964	894	1009	1445
	MEDIUM HIGH	820	900	1129	895	1373	1347	1428	1654
	HIGH	937	1083	1360	1215	1745	1795	1767	1898
1.00 ESP IN. W.C.	LOW	---	413	---	308	561	497	614	1125
	MEDIUM LOW	370	615	436	507	888	828	925	1337
	MEDIUM HIGH	753	835	1016	811	1307	1262	1357	1561
	HIGH	858	998	1262	1093	1641	1705	1663	1777

- NOTE: (1) Data based on Bottom Only or One Side return.
 (2) Data based on Both Sides or Bottom plus One Side
 (3) 075F16 Reduce airflow by 5% if Bottom Only return.
 (4) 100F20 Reduce airflow by 10% if Bottom Only return.
 (5) 125J20 Reduce airflow by 5% if Bottom Only return.
 (6) 150J20 Reduce airflow by 10% if Bottom Only return.
 (7) Gray area is above maximum temperature rise range.

MAX CFM's	
Filter Size	CFM
14" X 25"	1400
16" X 25"	1600
20" X 25"	2000
24" X 25"	2500
Max CFM based on 600 FPM	

CFM - Cubic Feet per Minute airflow.
 Filter required for each return-air inlet. Airflow performance includes 1" washable (600 FPM max) filter media.

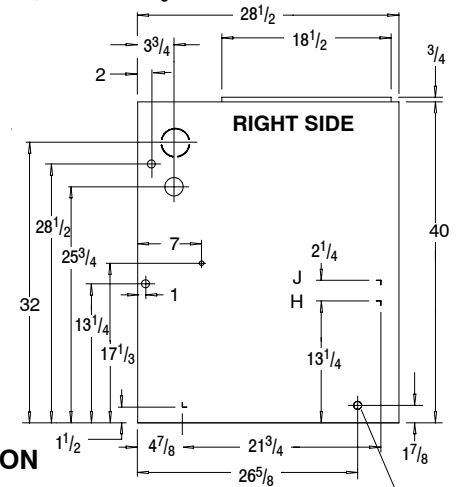
UNIT DIMENSIONS



Drawing is representative some models may vary

MINIMUM CLEARANCES TO COMBUSTIBLE MATERIALS FOR ALL UNITS	
REAR	0
FRONT	3"
Recommended For Service	30"
ALL SIDES OF SUPPLY PLENUM	1"
SIDES	0
VENT	
Single Wall Vent	6"
Type B-1 Double Wall Vent	1"
TOP OF FURNACE	1"

Horizontal position: Line contact is permissible only between lines formed by intersections of top and two sides of furnace jacket, and building joists, studs or framing.



DIMENSIONAL INFORMATION

Unit Capacity	Cabinet		Top	Bottom		Duct Size
	A	B	F	C	D	
*8MPN050B12 *8MPN075B12	15 1/2	14	6	13 3/8	12 5/8	H
*8MPN075F16 *8MPN100F14 *8MPN100F20	19 1/8	17 5/8	7 3/4	2 1/8	14 3/4	J
*8MPN100J22 *8MPN125J20 *8MPN150J20	22 3/4	21 1/4	9 1/2	1 15/16	18 3/4	J

NOTE: Evaporator "A" coil drain pan dimensions may vary from furnace duct opening size. Always consult evaporator specifications for duct size requirements.

Unit is designed for bottom return or side return.
Return air through back of unit is NOT allowed.

ALL DIMENSIONS IN INCHES
1 in = 25.4 mm

MODEL NUMBER IDENTIFICATION GUIDE

*	8	M P	N	0 7 5	B	1 2	B	#
Brand								Engineering Rev. Denotes minor change
Brand Efficiency 8 = Non-Condensing, 80+% Gas Furnace 9 = Condensing, 90+% Gas Furnace								Marketing Digit Denotes major change
Installation Configuration UP = Upflow DN = Downflow UH = Upflow/Horizontal HZ = Horizontal DH = Downflow/Horizontal MP = Multiposition, Upflow/Downflow/Horizontal								Cooling Airflow 08 = 800 CFM 16 = 1600 CFM 12 = 1200 CFM 20 = 2000 CFM 14 = 1400 CFM 22 = 2200 CFM
Major Design Feature 1 = One (Single) Pipe N = Single Stage 2 = Two Pipe P = PVC Vent D = 1 or 2 Pipe T = Two Stage L = Low NOx V = Variable Speed								Cabinet Width B = 15.5" Wide J = 22.8" Wide F = 19.1" Wide L = 24.5" Wide
								Input (Nominal MBTUH)

* Denotes Brand (C, H, T)

International Comfort Products, LLC
Lewisburg, TN 37091 U.S.A.

www.GoAirquest.com

Specifications subject change without notice