

# LC Connector Products

Siemon LC products offer all the benefits of SC and ST connectors in a Small Form Factor (SFF), high-density design. LC adapter products are compatible with our popular MAX®, CT®, FOB and MX-SM® work area products and our telecommunications room products, providing a wide variety of installation options. All fiber adapters are “universal” and support either multimode or singlemode fiber connections. LC connectors take just 2 minutes to terminate, using the Siemon LightSpeed® Termination Kit with LC upgrade option. Both multimode solutions and singlemode products are available.

Simplex LC connectors terminate buffered fiber and help maintain proper bend radius requirements in tight spaces

LC multimode connectors terminate either 62.5/125µm or 50/125µm multimode fiber

LC connectors use the familiar “RJ” style latch found on copper modular plugs

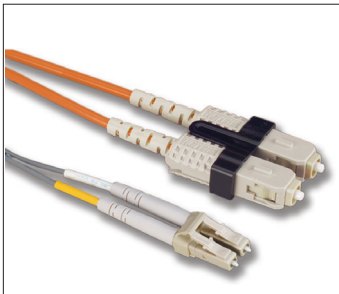
Multimode LC connectors terminate in just 2 minutes using our LightSpeed® Termination Kit (with LC upgrade option) minimizing field installation labor

Jumper combinations available include LC to LC, LC to SC, and LC to ST

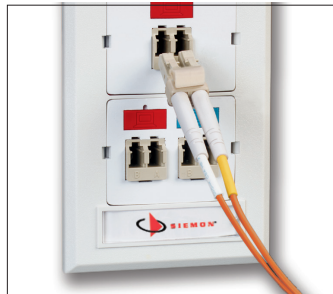
LightSpeed Termination Kit

LC Upgrade Kit

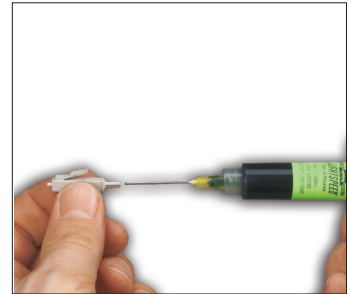
Factory terminated LC duplex jumpers comply with TIA/EIA 568-b.3 and ISO/IEC 11801Ed 2.0 fiber performance specifications



LC connectors are about half the size of SC duplex connectors, providing significantly greater density



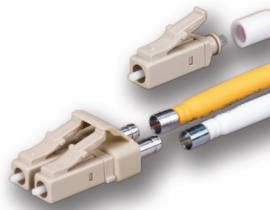
LC CT couplers with LC jumper



Use Siemon LightSpeed Termination Kit with LC upgrade option to terminate LC connectors in the field

# Siemon LC System

## WORK AREA SOLUTIONS



Simplex & Duplex LC F



Flat MAX LC Module in  
MX-SM Box  
(MX-SM2-XX) shown)



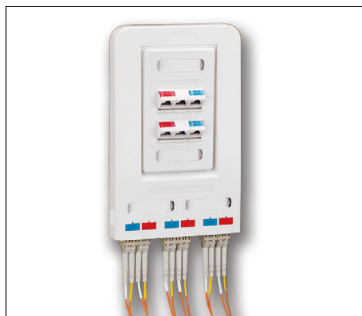
MAX<sup>®</sup> LC Modules in  
MAX Faceplate  
[MX-FP-S-04-XX) shown]



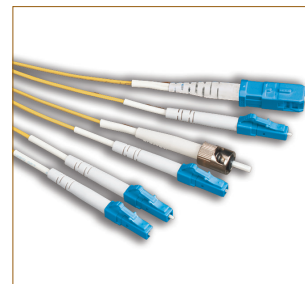
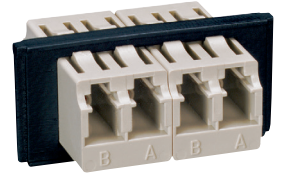
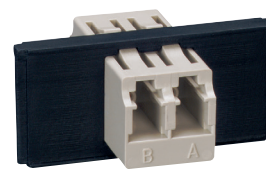
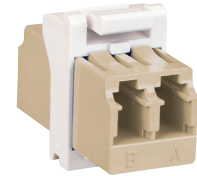
CT<sup>®</sup> Flat & Angled LC Couplers  
in CT Faceplate  
[CT8-FP-XX) shown]



MAX & CT LC Modules in  
Multi-user Telecommunications  
Outlet (MuTOA)  
[CT-MMO-XX) shown]



FOB LC Bezels in  
Fiber Outlet Box  
[FOB2-XX) shown]



LC — Simplex

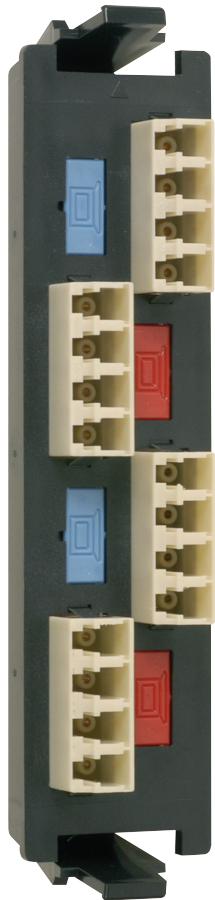


LC — LC Duplex

LightSystem<sup>®</sup>

**TELECOMMUNICATIONS ROOM SOLUTIONS**

Field-Installable Connectors



LC Quick-Pack™ Adapter Plate in RIC3-48



The Rack Mount Interconnect Center provides high-density fiber management and distribution for up to 288 fibers in just 4 RMS. Available in 24- to 96-port, 36- to 144-port, 48- to 192-port and 72- to 288-port.

LC Quick-Pack Adapter Plate in SWIC3



The Wall Mount Interconnect Center is designed to manage and connect up to 48 fibers. Available with or without integrated jumper guard and with various lock or latch options. A Mini-SWIC3 (SWIC3-M) is also available.

LC Quick-Pack Adapter Plate in FCP3-DWR



The Fiber Connect Panel rack mount enclosures economically connect, protect and manage up to 36 fibers within one Rack Mount Space (RMS).

LC Jumpers



LC — SC Duplex



LC — ST Duplex

# Ordering Information

## LC Work Area Solutions

### LC Field-Installable Connectors

#### Multimode

Part Number	Description
FC1-LC-MM-B80	LC Simplex connector, multimode, buffered fiber, beige boot
FC2-LC-MM-J80	LC Duplex connector, multimode, jacketed fiber, beige boot

#### Singlemode

Part Number	Description
FC1-LC-SM-B02	LC Simplex connector, singlemode, buffered fiber, white boot
FC1-LC-SM-J02	LC Simplex connector, singlemode, jacketed fiber, white boot

Note: Siemon LC jacketed fiber connectors require the use of 1.6mm jacketed fiber cables. Add "B" to the end of part number for bulk pack (simplex: 100/box; duplex: 50/box)

### LC MAX® Module

Part Number	Description
MX-F1-LC(X)-(XX)	Flat module with 1 duplex LC adapter (2 fibers)

Use (X) to specify LC adapter color: blank = beige, U = blue  
 Use (XX) to specify color: 01 = black, 02 = white, 04 = gray, 20 = ivory, 25 = bright white, 80 = light ivory

Note: Modules include dust caps, one color-matching, one red, and one blue icon per port.

### LC CT® Couplers

Part Number	Description
CT-LC(X)-(XX)	Flat coupler with 1 duplex LC adapter (2 fibers)
CT-LC(X)-LC(X)-(XX)	Flat coupler with 2 duplex LC adapters (4 fibers)
CT-A-LC(X)-(XX)	Angled coupler with 1 duplex LC adapter (2 fibers)
CT-A-LC(X)-LC(X)-(XX)	Angled coupler with 2 duplex LC adapters (4 fibers)

Use (X) to specify LC adapter color: blank = beige, U = blue  
 Use (XX) to specify color: 01 = black, 02 = white, 04 = gray, 20 = ivory, 80 = light ivory

Note: Couplers include one color-matching icon (clear for black), plus one red and one blue icon.

### LC Fiber Outlet Box (FOB) Bezels

Part Number	Description
FOB-BZL-LC(X)1-01	1 Duplex LC adapter (2 fibers)
FOB-BZL-LC(X)01	2 Duplex LC adapters (4 fibers)

Use (X) to specify LC adapter color: blank = beige, U = blue

#### For related product information request Spec Sheet(s):

- CT Faceplates (PROD-SS-CTF)
- MAX Modular Faceplates (PROD-SS-MXF)
- Fiber Outlet Box (PROD-SS-FOB)
- Multi-user Telecommunications Outlet (MuTOA) (PROD-SS-MMO)
- Wall Mount Interconnect Center (SWIC2) (PROD-SS-WI2)
- MX-SM Series Surface Mount Box (PROD-SS-MXSM)
- Rack Mount Interconnect Center (PROD-SS-RIC)
- LightSystem Jumper & Pigtails (PROD-SS-FJI)
- XGLO Jumpers and Pigtails (PROD-SS-LOF)
- LightSpeed Fiber Termination Kit (PROD-SS-FTK)

Because we continuously improve our products, Siemon reserves the right to change specifications and availability without prior notice.

North America	Asia Pacific	Latin America	Europe	China	India Middle East
P: (1) 860 945 4200	P: (61) 2 8977 7500	P: (571) 657 1950/51/52	P: (44) 0 1932 571771	P: (86) 215385 0303	P: (971) 4 3689743

#### Siemon Interconnect Solutions

P: (1) 860 945 4213  
[www.siemon.com/SIS](http://www.siemon.com/SIS)

## LC Modular Patching Solutions

### LC Quick-Pack™ Adapter Plates

Part Number	Description
RIC-F-LC(X)12-01	6 duplex LC adapters (12 fibers)
RIC-F-LC(X)16-01	4 quad LC adapters (16 fibers)
RIC-F-LC(X)24-01	6 quad LC adapters (24 fibers)

Use (X) to specify LC adapter color: blank = beige, U = blue

### LightSystem® LC Jumpers

#### Duplex

Part Number	Description
FJ2-LCLC(X)MM-(XX)	LC to LC multimode, orange jumper
FJ2-LCULCU-(XX)	LC to LC singlemode, yellow jumper
FJ2-LCSA(X)MM-(XX)	LC to ST multimode, orange jumper
FJ2-LCUSAU-(XX)	LC to ST singlemode, yellow jumper
FJ2-LCSC(X)MM-(XX)	LC to SC multimode, orange jumper
FJ2-LCUSCU-(XX)	LC to SC singlemode, yellow jumper

#### Simplex

Part Number	Description
FP1B-LC-(X)MM-01	LC pigtail multimode, orange jacket, 900 micron, buffered, 1m (3.3 ft.)
FP1B-LCU-01	LC pigtail singlemode pigtail, yellow jacket, 900 micron, buffered, 1m (3.3 ft.)

Use (X) to specify multimode fiber type: "—" = 62.5/125µm, orange jacket, 5 = 50/125µm (orange jacket)  
 Use (XX) to specify cable length: 01=1m (3.3 ft.), 02=2m (6.6 ft.), 03=3m (9.8 ft.), 05=5m (16.4 ft.)

Notes: Multimode performance: 0.15 dB typical insertion loss; 30 dB typical return loss.  
 Singlemode performance: 0.25 dB typical insertion loss; 57 dB return loss.

### Tools

#### Siemon LightSpeed® Termination Kit

Part Number	Description
FTERM-L2	LightSpeed Termination Kit*
FT-CKIT-L2	Consumables Kit for FTERM-L2**

\*All consumables including primer, adhesive, wipes, alcohol pads and polishing films are contained in the consumables kit and must be ordered separately. Contents of the FTERM Termination Kit are also available individually.

\*\*This product contains material with a time and temperature sensitive shelf life.

#### LC Fiber Termination Upgrade Kit

Part Number	Description
FTERM-LC	LC Fiber Termination Kit (used in conjunction with FTERM-L2)

Note: Contents of FTERM-LC are also available individually.

CT®, XGLO™, LightSpeed®, LightSystem®, MAX®, Quick-Pack™ and SM® are trademarks of Siemon

