

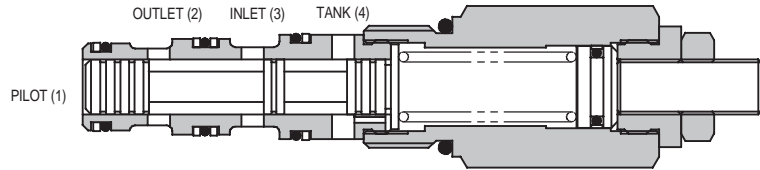
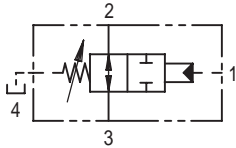


# 1RDS302 REMOTE SEQUENCE VALVE

## PILOT OPERATED SPOOL

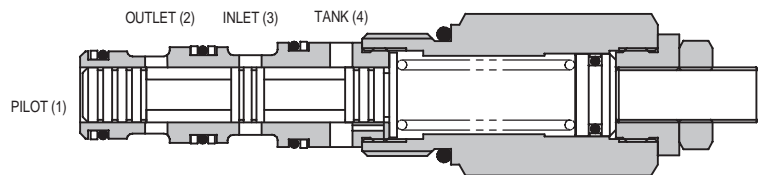
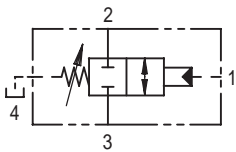
### 1RDS302-1

NORMALLY OPEN



### 1RDS302-2

NORMALLY CLOSED



## APPLICATION

This valve provides a means of interrupting a pressure line when a predetermined pilot pressure is reached in a normally open or normally closed form.

The valve can be used in any pilot or small flow system as a remotely operated sequence valve.

## OPERATION

13

When a pre-set pilot pressure is reached the spool moves back against the spring either opening or closing the line between inlet and outlet. When the pilot pressure falls the valve will return to its normal position.

## FEATURES

Cartridge design enabling speedy servicing when mounted in a body or in a composite manifold.

## SPECIFICATIONS

Figures based on: Oil Temp = 40°C Viscosity = 40 cSt

<b>Rated Flow</b>	30 litres/min (8 US GPM)
<b>Max Working Pressure</b>	350 bar (5000 psi)
<b>Pilot Pressure</b>	5 to 100 bar (73 to 1450 psi) Max pilot pressure 210 bar
<b>Cartridge Material</b>	All working parts hardened and ground steel. External surfaces zinc plated
<b>Body Material</b>	Standard aluminium (up to 210 bar*) Add suffix '377' for steel option
<b>Mounting Position</b>	Unrestricted
<b>Cavity Number</b>	A5302 (See Section 17)
<b>Torque Cartridge into Cavity</b>	60 Nm (44 lbs ft)
<b>Weight</b>	1RDS302 0.24 kg (0.53 lbs) 1RDS352 0.60 kg (1.32 lbs)
<b>Seal Kit Number</b>	SK645 (Nitrile) SK645V (Viton)
<b>Recommended Filtration Level</b>	BS5540/4 Class 18/13 (25 micron nominal)
<b>Operating Temp</b>	-20°C to +90°C
<b>Leakage</b>	50 millilitres/min nominal
<b>Nominal Viscosity Range</b>	5 to 500 cSt

\*For applications above 210 bar please consult our technical department or use the steel body option.

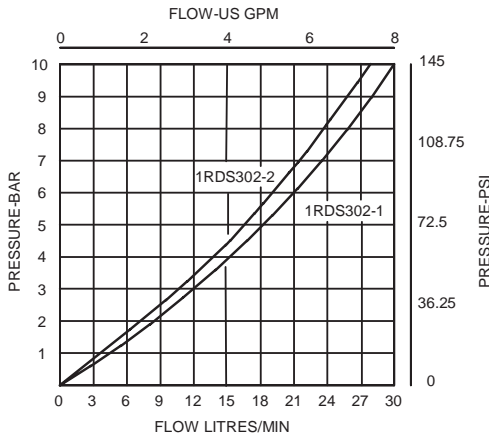
## Integrated Hydraulics Ltd

Collins Road, Heathcote Ind. Est., Warwick, CV34 6TF, UK.  
Tel: +44 (0) 1926 881171 Fax: +44 (0) 1926 315729  
Website: www.integratedhydraulics.com

## Integrated Hydraulics Inc

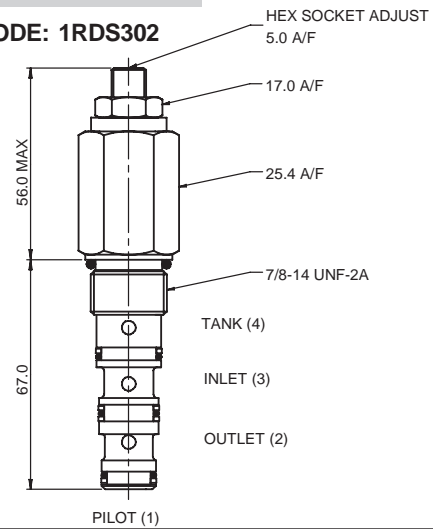
7047 Spinach Drive, Mentor, Ohio 44060, USA  
Tel: (440) 974 3171 Fax: (440) 974 3170  
Website: www.integratedhydraulics.com

## PRESSURE DROP



## CARTRIDGE ONLY

**BASIC CODE: 1RDS302**

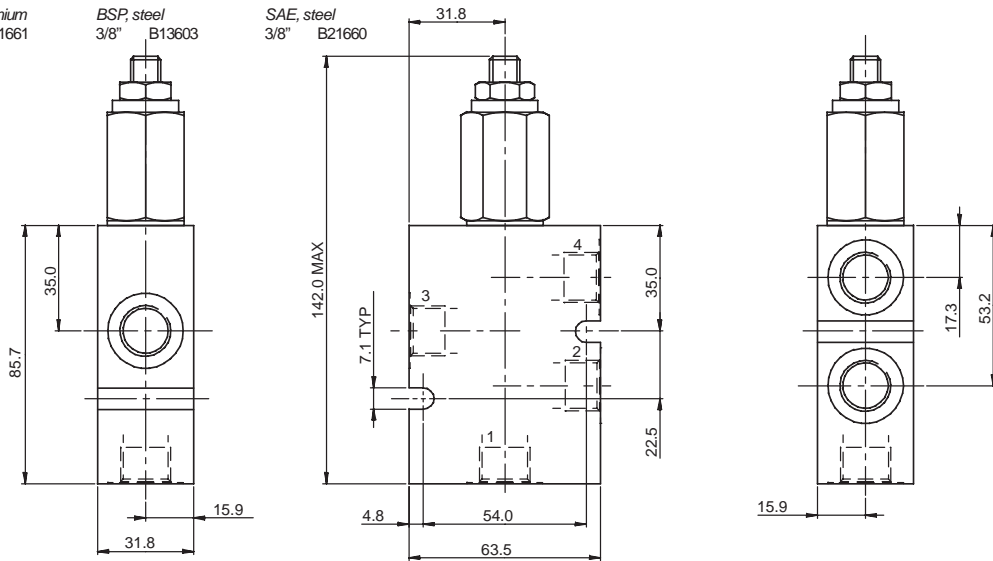


## COMPLETE VALVE 3/8" PORTS

**BASIC CODE: 1RDS352**

Body ONLY part numbers

BSP, aluminium 3/8" B13602      SAE, aluminium 3/8" B21661  
BSP, steel 3/8" B13603      SAE, steel 3/8" B21660



Where measurements are critical request certified drawings

## ORDERING CODE EXAMPLE

**1RDS\*\*\* 1 P 3W 10 S**

### Basic Code

1RDS302 = Cartridge Only  
1RDS352 = Cartridge and Body

### Options

1 = Normally Open  
2 = Normally Closed

### Adjustment Means

P = Leakproof Screw Adjustment

### Port Sizes - Bodied Valves Only

3W = 3/8" BSP  
6T = 3/8" SAE

### Seals

S = Nitrile (For use with most industrial hydraulic oils)  
SV = Viton (For high temperature and most special fluid applications)

### Pressure Range @ 14 l/min

2 = 10- 23 bar. Std setting 20 bar  
6 = 15- 65 bar. Std setting 30 bar  
8 = 20- 80 bar. Std setting 40 bar (-2 variant)  
10 = 20-105 bar. Std setting 60 bar (-1 variant)  
Std setting made at 14 litres/min

We reserve the right to change specifications without notice