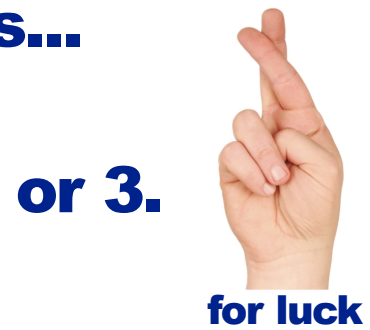


# Barcode Software

## You have 3 choices...



## When so much depends on your barcode, why take a risk?

You've developed a great product, put it into production and negotiated sales with retailers and distributors, yet all that hard work could be for nothing if the barcode won't scan. If your goods are rejected, you risk a damaged reputation and even more hard work to mend relationships with your customers.

It's a risk you don't need to take if you have high-quality barcode software backed up by an organization with the experience, reputation and support structure to ensure that your barcodes scan every time, all the time!

Computalabel software has been helping major manufacturers, publishers and designers to produce high quality barcodes since 1988. Our barcode creation software, WBC4 for Windows and MBC4 for Macintosh produces high precision barcode images in a range of file formats. The software is easy to install, easy to use and offers the best quality around.

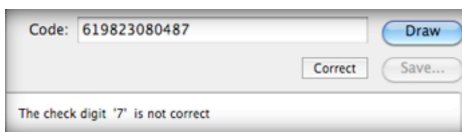
You also get free, unlimited and unrivaled support. Help is available every step of the way, ensuring that your barcodes comply with official standards and meet the demands of your customers. We offer free barcode testing to existing AND potential customers. We'll scan your barcodes and advise on the best settings to use. Our free support extends to all aspects of barcode production. Our staff have many years experience in reprographics, printing and packaging so we speak your language.

### All the features you need...



#### Accuracy

Produce accurate and precise barcodes which adhere to the official guidelines for each barcode type. Barcodes can be adjusted to compensate for the printing process you are using.



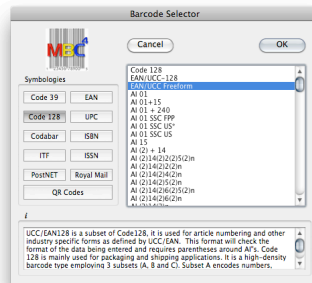
#### Safety

The software checks the data that you enter to ensure you don't produce a bad barcode. The check digit is verified and the structure is checked against the official standards. It also limits the size of your barcode so you don't break the rules.



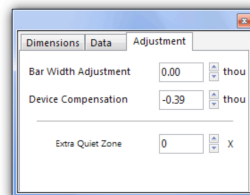
#### Hundreds of Options

All popular barcode types are supported, plus hundreds of less common types so you won't be stuck when your customer asks for an obscure layout. Check out the full list.



#### Easy Barcode Selection

The range of barcode types is divided into 11 symbologies. Clicking on one of the buttons shows a list of sub-types. The Info box displays a description of each one.



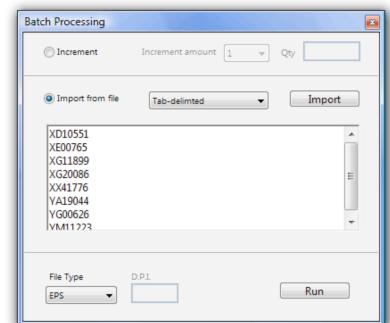
#### Precise Adjustment

The Adjustment panel is used to alter the widths of all of the bars in standard barcodes and the blocks in QR Codes to compensate for print gain. This ensures the best possible barcode quality. We can advise on the best settings - we'll even scan your press samples free of charge.



#### Text as Outlines

There's no need to send fonts with your barcode when the job goes to the printers. The default fonts can be saved as PostScript outlines.



#### Batch Processing

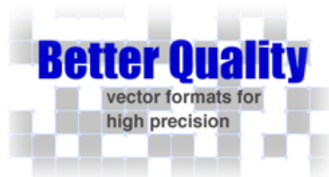
As well as entering barcode data manually, you can also set up incrementing sequences or import all your barcode data from an external file. Then just click the Run button and the entire batch of barcodes is saved to disk!

# Version 4.4 - Now with QR Codes!

QR (or Quick Response) Codes were initially used in vehicle manufacture, but nowadays you can see them everywhere - billboards, in-store, magazines, business cards and newspapers to name just a few.

Most smartphones can read QR codes, either as a built-in feature or via an application which can be downloaded and installed.

QR Codes are used to encode web addresses, email addresses, SMS messages, contact details and many other types of information. QR Codes can instruct the device to take specific actions such as displaying a web page. This method of "hardlinking" objects to web resources has become very popular in the field of marketing.



MBC4.4 and WBC4.4 can now create high quality QR Codes with all the safety and accuracy that our customers expect. We don't just offer bit-mapped QR Codes - we give you vector formats (eps and pdf) for the best possible finished results. Plus, with WBC4 & MBC4 you can adjust for print gain. No online generator gives you that very important feature.



Unlike some online QR generators, our software performs full mask evaluation to give you the best scanability. We also give you the full range of 4 error-correction levels. We've followed the specifications and written our QR generation code from the ground up.



QR Codes have special formats for URLs, bookmarks, telephone numbers, contact details (vCard), SMS messages and email - we support all of them and give you easy-to-use editors so that you'll get the format right every time!

Don't forget, if you choose our software, you have unlimited access to our support staff who have an in-depth understanding of QR Codes and all aspects of barcode production. We are happy to advise you and assist you, both before and after you buy the software.

The new version is available on Macs in Universal Binary format. It will run natively on Intel and Power PC Macs.



MBC4.4 works with all the latest Macs and is fully compatible with all versions of OS X from 10.4 onwards, including Leopard 10.5, Snow Leopard 10.6 and Lion 10.7.

WBC4.4 is compatible with Windows XP, 2000, Vista and Windows 7. It includes new barcode types, new features and greater security than ever before.

## Upgrades Available

Users of ANY previous version are eligible for upgrade pricing. This includes MacBarcodia, MBC3, MBC4 and all versions of WBC4.

The upgrade is supplied as a full installation. It does not require any files from the previous version. So long as we can verify your initial purchase from your serial number or our sales database, nothing else is needed for you to upgrade.

## Barcode Options:

UPC	EAN	ITF	Code 128	Code 128 (cont.)	ISBN
UPC-A	EAN-13	ITF-14	Code 128	AI (3)2(3)n	ISBN 13
UPC-A + 2	EAN-13 + 2		EAN/UCC-128	AI (3)2(4)n	ISBN 13 + 2
UPC-A + 5	EAN-13 + 5	ITF-14 + 8	EAN/UCC Freeform	AI (3)5(3)n	ISBN 13 + 5
UPC-E	EAN-8	ITF-Variable	AI 01	AI (3)6(2)n	ISBN 13 Freeform
UPC-E + 2	EAN-13 Alternative	ITF-Variable + 6	AI 01+15	AI (3)6(3)n	E Non-Strippable - A
UPC-E + 5	BBW 0	AWT 10/62.5	AI 01 + 240	AI (3)6(4)n	E Non-Strippable - B
KC	BBW 1	AWT 10/80	AI 01 SSC FPP	AI (3)8(2)n	E Strippable - A
Spec 16	BBW 2	AWT 8/62.5	AI 01 SSC US*	AI (3)8(3)n	E Strippable - B
Spec 20	BBW 3	AWT 8/80	AI 01 SSC US	AI (3)8(4)n	ISBN 10
Spec 21	BBW 4	ITF-14 US	AI 15	AI (3)+n	ISBN 10 + 2
Spec 7	BBW 5	M&S ITF A	AI (2) + 14	AI (4)14(2)n	ISBN 10 + 5
U Non-Strippable - A	BBW 6	NCH 12	AI (2)14(2)2(2)5(2)n	AI (4)14(3)n	ISBN 10 Alternative
U Non-Strippable - B	BBW 7	NCH 8	AI (2)14(2)2(2)n	AI (4)14(4)n	ISBN 13 + 2 Alternative
U Strippable - A	BBW 8	Spec 19	AI (2)14(2)4(2)n	AI (4)16(2)n	ISBN 13 + 2 Dual
U Strippable - B	BBW 9		AI (2)14(2)5(2)n	AI (4)16(3)n	ISBN 13 + 2 Dual + Flag
		<b>Code 39</b>	AI (2)14(2)6(2)5(2)n	AI (4)16(4)n	ISBN 13 + 5 Alternative
UPC 442	EAN WHS 4	Code 39	AI (2)14(2)6(2)n	AI (4)18(2)n	ISBN 13 + 5 Dual
UPC 442 IA	EAN WHS 5	AIAG - Type A1	AI (2)14(2)6(2)n	AI (4)18(3)n	ISBN 13 + 5 Dual + Flag
UPC 451	EAN WHS 6	AIAG - Type A2	AI (2)14(2)n	AI (4)18(4)n	ISBN 13 + 5 Dual (HA)
UPC 46	EAN13 (BHR)	AIAG - Type A3	AI (2)14(4)6(2)n	AI (4)2(2)n	ISBN 13 + 5 Dual (PE)
UPC 532	EAN13 (7HR)	AIAG - Type A4	AI (2)14(4)n	AI (4)2(3)n	ISBN 13 + 5 Non-Strippable - A
UPC 541	EAN13 - Amcor	AIAG - Type A5	AI (2)16(2)n	AI (4)2(4)n	ISBN 13 + 5 Non-Strippable - B
UPC 55	EAN13 - ASDA	AIAG - Type B1	AI (2)16(3)n	AI (4)6(2)n	ISBN 13 + 5 Strippable - A
UPC A 7pt	EAN13 - BLP	AIAG - Type B2	AI (2)16(4)n	AI (4)6(3)n	ISBN 13 + 5 Strippable - B
UPC A 8pt	EAN13 - CLC UK	AIAG - Type C1	AI (2)18(4)n	AI (4)6(4)n	ISBN 13 Alternative
UPC A 9pt	EAN13 - Hart Boulton	BI - A	AI (2)18(3)n	AI (4)8(2)n	ISBN 13 Dual
UPC H442	EAN13 IKS-OICM	BI - B	AI (2)18(4)n	AI (4)8(3)n	ISBN 13 Dual + Flag
UPC H451	EAN13 SWISSMEDIC	C39*	AI (2)2(2)n	AI (4)8(4)n	ISBN 13 Dual - UKHO
UPC H46	EAN8 - ASDA	CGG - A	AI (4)+n	AI (4)8(5)n	T&H - ISBN
UPC H532	MS7a	CGG - B	AI (2)2(3)n	AI SSCC-18	T&H - ISBN + 5
UPC H541	MS7b	Code 39 - RG	AI (2)2(4)n	Boots Print	WMN ISBN A
UPC H55	Spec 18	GS - A	AI (2)5(2)n	Code 128 - RM Special	WMN ISBN B
UPC N442	Wicks	GS - B	AI (2)6(2)n	Coupon 1	
UPC N451	WMN EAN A	GS - C	AI (2)6(3)n	Coupon 2	<b>ISSN</b>
UPC N46	WMN EAN B	IMH	AI (2)6(4)n	Coupon 3	ISSN
UPC N532		KTP Part No	AI (2)8(2)n	Coupon 4	ISSN + 2
UPC N541		KTP Serial No	AI (2)8(3)n	Coupon 5	ISSN + 5
UPC N55		PoA - A	AI (2)8(4)n	EII 7	
WMN UPC A		PoA - B	AI (2)+n	HIBC LIC Primary	<b>Codabar</b>
WMN UPC B		PoA - C	AI 22	HIBC TSH	
		PoA - D	AI (3)14(2)n	HIBC UCC/EAN Primary	<b>Royal Mail</b>
		PZN	AI (3)14(3)n	KM - A	
		QPC	AI (3)14(4)n	KM - B	<b>PostNET</b>
		Spec 17	AI (3)16(2)n	M&S C128 A	<b>QR Codes</b>
			AI (3)16(3)n	M&S C128 L	
			AI (3)16(4)n	M&S C128 R	
			AI (3)18(2)n	McD SSCC-18 A	
			AI (3)18(3)n	McD SSCC-18 B	
			AI (3)18(4)n	McD SSCC-18 C	
			AI (3)2(2)n	SEGA	
				Spec - SE	

