

Enclosures - Electronic

	Page		Page
Desktop & Instrument Enclosures	2338	Power Supply Cases	2327
Enclosure Accessories	2346	Project & General Purpose Enclosures	2314
Hand-Held Enclosures	2329	Screening Cans	2338
Plug In & DIN-Rail Mount	2327	Wall Mount Enclosures	2337
Potting Boxes	2313		

Potting Boxes

	ABS	Polystyrene (PS)	Polycarbonate (PC)	Polyester (GRP)	Aluminium (Diecast)	Steel (Painted)
Outdoor Use	●	●●	●●●●	●●●●●	●●●●	●●●
Ease of machining	●●●●●	●●●	●●●●●	●●	●●	●●
Temperature Range	●●●	●●●	●●●●	●●●●	●●●	●●●●
Light weight	●●●●●	●●●●●	●●●●●	●●●	●●	●
High Rigidity	●	●	●●●	●●●●	●●●●●	●●●●
Impact Resistant	●●●	●●	●●●●	●●●●	●●●●	●●●●
Chemical Reistance						
■ Salt Water	●●	●●	●●●●●	●●●●●	If Coated	●●
■ Acid (mild)	●●●●	●●●●	●●●●	●●●●	●●●	●●
■ Alkali (mild)	●●●●	●●●●	●●●●	●●●●	●	●●
■ Hydraulic Oil	●	●	●●●	●●●●●	●●●●●	●●
■ Petroleum	●●●●●	●●●●●	●●●●●	●●●●●	●●●●●	●●
■ Alcohol	●●●	●●●	●●●●	●●●●	●●●●●	●●
■ Solvents	●	●	●	●●●●	●●●●●	●●
■ Coolants	●●●●	●●●●●	●●●	●●●●●	●●●	●●
This table represents only standard values and is designed as a guide. Appropriate preliminary tests are therefore recommended. No responsibility can be accepted for the accuracy of the specifications.					Key ●●●●● = Excellent ● = Poor	

IP Explanation and Ratings

EN 60529 outlines an international classification system for the sealing effectiveness of enclosures of electrical equipment against the intrusion into the equipment of foreign bodies (i.e. tools, dust, fingers) and moisture. This classification system utilizes the letters "IP" ("Ingress Protection") followed by two or three digits. (A third digit is sometimes used. An "x" is used for one of the digits if there is only one class of protection; i.e. IPX4 which addresses moisture resistance only.)

FIRST NUMBER - Degrees of Protection

The first digit of the IP code indicates the degree that persons are protected against contact with moving parts (other than smooth rotating shafts, etc.) and the degree that equipment is protected against solid foreign bodies intruding into an enclosure.

Protection against solids

IP 0 no protection

- 1 protected against solid objects up to 50 mm (e.g. accidental touch by hands)
- 2 protected against solid objects up to 12mm (e.g. fingers)
- 3 protected against solid objects over 2.5mm (tools and small wires)
- 4 protected against solid objects over 1mm (tools and small wires)
- 5 protected against dust - limited ingress permitted (no harmful deposit)
- 6 totally protected against dust

SECOND NUMBER - Degrees of Protection

The second digit indicates the degree of protection of the equipment inside the enclosure against the harmful entry of various forms of moisture (e.g. dripping, spraying, submersion, etc.)

Protection against liquids

IP 0 no protection

- 1 protected against vertically falling drops of water
- 2 protected against direct sprays of water up to 15° from the vertical
- 3 protected against sprays up to 60° from the vertical
- 4 protected against water sprayed from all directions - limited ingress permitted
- 5 protected against low pressure jets of water from all directions - limited ingress permitted
- 6 protected against strong jets of water - limited ingress permitted
- 7 protected against the effects of immersion between 15cm and 1m
- 8 protection against long periods of immersion under pressure

THIRD NUMBER

Protection against mechanical impacts (commonly omitted)

IP 0 No protection.

- 1 Protects against impact of 0.225 joule (e.g. 150g weight falling from 15cm height).
- 2 Protected against impact of 0.375 joule (e.g. 250g weight falling from 15cm height).
- 3 Protected against impact of 0.5 joule (e.g. 250g weight falling from 20cm height).
- 4 Protected against impact of 2.0 joule (e.g. 500g weight falling from 40cm height).
- 5 Protected against impact of 6.0 joule (e.g. 1.5kg weight falling from 40cm height).
- 6 Protected against impact of 20.0 joule (e.g. 5kg weight falling from 40cm height).

448025

Potting (with fixing lugs) ABS



● Low cost grey potting box

Mfrs. List No.	H	W	D	Order Code
GPL05	19	24	36	645-643
GPL1	24	30	50	301-152
GPL2	27	42	55	301-164

224365

Order Multiple=10

Mfrs. List No.	Order Code	10+	50+	100+	500+	1K+
GPL05	645-643					
GPL1	301-152					
GPL2	301-164					

Potting ABS



● Low cost, black potting box

Mfrs. List No.	H	W	D	Order Code
PB1	15	30	20	301-176
PB2	20	40	40	301-188
PB3	30	50	50	301-190
PB4	35	70	50	301-206
PB5	25	100	50	301-218

224366

Order Multiple=10

Mfrs. List No.	Order Code	10+	50+	100+	500+	1K+
PB1	301-176					
PB2	301-188					
PB3	301-190					

Order Multiple=5

Mfrs. List No.	Order Code	5+	10+	50+	100+	500+	1K+
PB4	301-206						
PB5	301-218						

Potting Boxes - continued

ABS Potting Boxes



- A range of low cost boxes are for encapsulating electronic assemblies
- Enclosures are made from rigid ABS with a flammability rating of **UL-94HB**
- Operating temperature is between -20°C to +60°C
- All enclosures are finished in Black
- Lids are available for all enclosures listed

Dimensions (mm)			Box	Lid
L	W	D	Order Code	Order Code
20	20	13	109-4644	109-4668
25	25	15	109-4648	109-4669
25	25	25	109-4649	109-4669
30	20	15	109-4650	109-4670
40.5	13.5	25	109-4652	109-4672
40	40	13	109-4653	109-4673
40	40	20	109-4654	109-4673
45	30	15	109-4655	109-4674
45	30	25	109-4656	109-4674
50	50	25	109-4661	109-4676
70.5	50.5	20	109-4663	109-4677
70.5	50.5	35	109-4664	109-4677
90	60	20	109-4665	109-4678
100	50	25	109-4666	109-4679
100	100	40	109-4667	109-4680

342005

Mftrs. List No.	Order Code	10+	50+	100+	500+
Enclosures					
G202013B	109-4644				
G252515B	109-4648				
G252525B	109-4649				
G302015B	109-4650				
G401325B	109-4652				
G404013B	109-4653				
G404020B	109-4654				
G453015B	109-4655				
G453025B	109-4656				
G505025B	109-4661				
G705020B	109-4663				
G705035B	109-4664				
G906020B	109-4665				
G1005025B	109-4666				
G10010040B	109-4667				
Lids					
G202013L	109-4668				
G252515L	109-4669				
G302015L	109-4670				
G401316L	109-4672				
G404013L	109-4673				
G453015L	109-4674				
G505015L	109-4676				
G705020L	109-4677				
G906020L	109-4678				
G1005025L	109-4679				
G10010040L	109-4680				

Potting ABS



- Complies to **DIN53495**
- Resistant to most chemicals
- Suitable for machining, punching and printing
- Operating Temperature: -20°C to 94°C

230577

Mftrs. List No.	H	W	D	Order Code	1+	5+	10+	50+
10 Per Pack								
BIM 103 PB	20	35	40	117-1618				
BIM 104 PB	30	40	50	117-1619				
BIM 111 PB	20	30	30	117-1620				

Project & General Purpose Enclosures

Raspberry Pi Enclosures



Dimensions: L=97mm, W=61mm, H=27mm

This stylish case complements the Raspberry Pi computer and has many design features intended to utilise the wide capabilities of the Raspberry Pi.

NEW

- Two piece construction, base and cover, moulded in a smooth finish ABS plastic
- Base has side clips which positively locate the Raspberry Pi board into position allowing it to be operated with or without the cover in place, giving easy access to the GPIO and JTAG
- Base comes with four rubber feet and also features two screw slots to allow the enclosure to be vertically mounted
- Cover can be easily removed without the need to unplug any cables
- The cover features a tunnel recess to allow viewing of the operation LEDs
- Vented base and cover to allow through air flow
- Available in white, black or clear

663015

Colour	Mftrs Part No.	Order Code	Price Each		
			1+	20+	50+
White	MC-RP001-WHT	211-3797			
Black	MC-RP001-BLK	211-3798			
Clear	MC-RP001-CLR	211-3799			

ABS 1591S Series IP54



- Economical black ABS box ideally suited for mounting PC boards
- Includes vertical card guides
- Two piece lap joint construction provides protection against dust and splashing water (**IP54**)
- Lid is secured with self-tapping screws
- No "gate" marks on bottom of enclosure

230583

Mftrs. List No.	Dimensions (mm)			Order Code	Price Each			
	H	W	D		1+	10+	100+	250+
1591LSBK	85	56	39	142-6570				
1591ASBK	100	50	25	142-6571				
1591BSBK	112	62	31	142-6572				
1591CSBK	120	65	40	142-6573				
1591DSBK	150	80	50	142-6574				
1591ESBK	191	110	61	142-6575				
1591GSBK	121	94	34	142-6577				
1591MSBK	85	56	25	142-6579				
1591SSBK	110	82	44	142-6580				
1591TSBK	120	80	59	142-6581				
1591USBK	120	120	59	142-6582				
1591VSBK	120	120	94	142-6583				

Miniature ABS (Impact Resistant)



- Can easily be drilled or punched
- Lid retained by four self-tapping screws

230584

Mftrs. List No.	Dimensions (mm)			Order Code	Price Each					
	H	W	D		1+	25+	50+	100+	500+	1K+
Black										
T2	25	75	56	645-655						
T3	27	75	51	301-449						
HBT4	24	113	59	536-8637						
White										
T2W	75	56	25	645-667						
T3W	27	75	51	301-450						
Grey										
T3G	27	75	51	301-462						

Miniature - 'RX Range' ABS



- Finished in matt black
- Lid retained by four black No 2 self-tappers
- Supplied in Packs of 5

203461

Mftrs. List No.	Dimensions (mm)			Order Code	Price Per Pack			
	H	W	D		1+	5+	10+	25+
RX2004/S	14	21	29	187-1049				
RX2005/S	16	24	34	187-1050				
RX2006/S	18	28	40	187-1051				
RX2007/S	20	32	46	187-1052				
RX2008/S	23	38	54	187-1053				
RX2009/S	25	44	64	187-1054				
RX2010/S	28	50	74	187-1056				
RX2KL05	16	24	49	187-1057				
RX2KL06	18	28	58	187-1058				
RX2KL07	20	32	67	187-1059				

Miniature ABS



H = 25, W = 73, D = 51

230586

Mftrs. List No.	Colour	Order Code	Price Each			
			1+	50+	100+	1K+
HBT3		645-680				
HBT3W		645-692				

Multipurpose - Utility ABS



- Made of high impact ABS plastic
- Continuous operating temperature of 70°C
- Light textured black finish
- Close fitting interlocking lid
- External mounting brackets
- Cable outlets

499218

Mftrs. List No.	Dimensions (mm)			Order Code	Price Each			
	H	W	D		1+	25+	50+	100+
G1011	22	65	38	152-6712				
G1013	27	65	38	152-6713				
G1015	22	72	44	152-6715				
G1018	33	88	68	152-6718				
G1019	33	82	57	152-6719				

Multipurpose (PCB Guides) ABS (Impact Resistant)



- Wide range of multipurpose boxes
- Integral PCB guides (except 301-292, 301-371 and 645-722)
- Lid retained by M3.5 screws into brass inserts

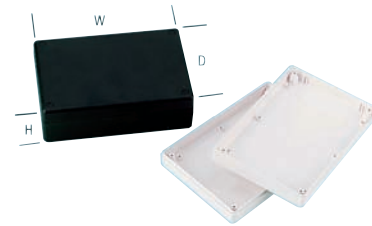
230592

Mftrs. List No.	Dimensions (mm)			Finish	Order Code	Price Each				
	H	W	D			1+	50+	100+	500+	
Black										
MB1	40	79	61	Gloss	301-243					
MB2	41	100	76	Gloss	301-255					
MB3	45	118	98	Gloss	301-267					
MB4	85	216	130	Matt	301-279					
MB5	60	150	100	Gloss	301-280					
MB6	64	220	150	Matt	301-292					
MB7	83	177	120	Matt	301-309					
MB8	50	150	80	Gloss	301-310					

Mftrs. List No.	Dimensions (mm)				Finish	Order Code	Price Each			
	H	W	D			1+	50+	100+	500+	
White										
MB1W	40	79	61	Gloss	301-322					
MB2W	41	100	76	Gloss	301-334					
MB3W	45	118	98	Gloss	301-346					
MB4W	85	216	130	Matt	301-358					
MB5W	60	150	100	Gloss	301-360					
MB6W	64	220	150	Matt	301-371					
MB7W	83	177	120	Matt	301-383					
MB8W	50	150	80	Gloss	301-395					

Mftrs. List No.	Dimensions (mm)				Finish	Order Code	Price Each			
	H	W	D			1+	50+	100+	500+	
Grey										
MB1G	40	79	61	Gloss	301-401					
MB2G	41	100	76	Gloss	301-413					
MB3G	45	118	98	Gloss	301-425					
MB4G	85	216	130	Matt	645-710					
MB5G	60	150	100	Gloss	301-437					
MB6G	64	220	150	Matt	645-722					
MB7G	83	177	120	Matt	645-795					
MB8G	50	150	80	Gloss	645-709					

Multipurpose - 'Adaptable' (PCB Guides) ABS



- Attractive matt finish
- Vertical PCB guides and bosses moulded in lid and base of box
- Lid screws can be inserted from either side and can be hidden by matching covers

Mftrs. List No.	AB77=938-853	AB78=938-865	AB88=938-877
	AB77W=938-889	AB78W=938-890	AB910W=536-8716

224368

External Dimensions				Price Each				
H	W	D	Order Code	1+	10+	50+	100+	500+
Black								
178	122	36	938-853					
178	122	55	938-865					
178	122	74	938-877					
White								
178	122	36	938-889					
178	122	55	938-890					
65	240	190	536-8716					

Multipurpose (PCB Guides) ABS



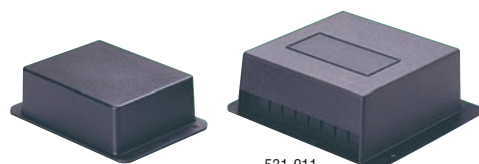
- Polished white finish
- Lid retained by 4 3.5mm countersunk plated screws into brass inserts
- PCB slots provided in base of 531-868 and in both halves of 531-870

External Dimensions			Wall Thickness (nom.)		Order Code
H	W	D			
143	82	30	3		531-856
143	82	44	3		531-868
143	82	58	3		531-870

230605

Mftrs. List No.	Order Code	Price Each			
		1+	50+	100+	500+
BM11W	531-856				
BM12W	531-868				
BM22W	531-870				

Flanged ABS (Impact Resistant)



301-220/231

531-911

Project & General Purpose Enclosures - continued

Flanged - continued

ABS (Impact Resistant) - continued

301-220, 301-231

- Bases are loose fitted, secured when box is fitted to a panel or bulkhead
- Alternatively, base may be riveted to box flange to form **tamper proof** enclosure

531-911

- Surface mounting box in black ABS with separate self-locking base
- Seven numbered slots provided for wires or 0.25" PCB mounting blades
- Raised panel provided for labels

External Dimensions							Mfrs. List No.
H	W	D	Base	Fixing Holes	Fixing Centres	Finish	
84	72	32	105 x 71	2	95 x 5 dia	Matt	PBL2
84	64	46	115 x 64	6	42 x 100 x 4 dia	Matt	PBL3
42	95	100	112 x 120	3	84 x 108 x 5 dia	Matt	PBL7

218851

Mfrs. List No.	Order Code	1+	50+	100+	500+
PBL2	301-220				
PBL3	301-231				
PBL7	531-911				

Flanged ABS



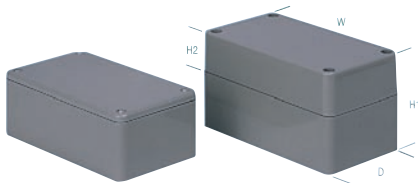
- Multipurpose, low-cost moulded black ABS
- Slotted fixing lugs
- Base intended as interference fit, but can be glued
- Easily punched or drilled

External Dimensions				Wall Thickness (nom.)	Order Code
H	W	D			
42	42	40	2.5	531-881	
34	66	50	2.5	531-893	
31	58	58	2.5	531-900	

230654

Mfrs. List No.	Order Code	5+	50+	100+	500+
PBL04	531-881				
PBL06	531-893				
PBL1	531-900				

Multipurpose '2000 Series' (PCB Guides) ABS



- ABS boxes with shallow or deep lids
- Heat resistant to 85°C
- PCB mounting slots on all sides for 1.5mm thick boards
- Close fitting flanged lid

Mfrs List No.	Standard	W	H1	D	Mfrs List No.	Standard	W	H1	D
BIM 2000/10/GY		50	27	75	BIM 2005/15/GY		80	50	150
BIM 2001/11/GY		56	39	85	BIM 2006/16/GY		110	60	190
BIM 2002/12/GY		50	25	100	BIM 2008/18/GY		55	42	55
BIM 2003/13/GY		62	31	112	BIM 2009/19/GY		200	64	250
BIM 2004/14/GY		65	40	120	BIM 2030/30/GY		80	30	142

Mfrs List No.	Standard	W	H1	H2	D	Deep Lid	W	H1	H2	D	
BIM 2005/25/GY/GY		80	76	30	80	BIM 2006/26/GY/GY		90	90	34	110

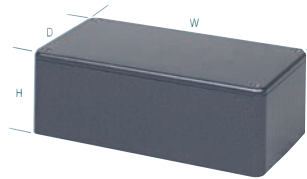
231166

Colour	Mfrs. List No.	Order Code	1+	50+	100+	500+
Standard						
	BIM 2000/10/GY	117-1676				
	BIM 2001/11/GY	117-1678				
	BIM 2002/12/GY	117-1679				
	BIM 2003/13/GY	117-1681				
	BIM 2004/14/GY	117-1682				
	BIM 2005/15/GY	117-1684				
	BIM 2006/16/GY	117-1686				

Colour	Mfrs. List No.	Order Code	1+	50+	100+	500+
Standard						
	BIM 2008/18/GY	117-1688				
	BIM 2009/19/GY	117-1691				
	BIM 2030/30/GY	117-1692				

Colour	Mfrs. List No.	Order Code	1+	50+	100+	500+
Deep Lid						
	BIM 2005/25/GY/GY	117-1685				
	BIM 2006/26/GY/GY	117-1687				

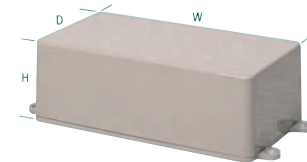
RFI/EMI Shielded - '2000 Series' (PCB Guides) ABS (Impact Resistant)



- High impact resistant dark grey ABS, internally coated with nickel acrylic
- Internally moulded vertical PCB guides
- Supplied with supports for horizontal PCB mounting

External Dimensions		Mfrs. List No.	Order Code	1+	10+	25+	50+
42 x 55 x 55		BIM 2008/18/EMI/RFI	117-1600				
27 x 50 x 75		BIM 2000/10/EMI/RFI	117-1592				
39 x 56 x 85		BIM 2001/11/EMI/RFI	117-1593				
25 x 50 x 100		BIM 2002/12/EMI/RFI	117-1594				
31 x 62 x 112		BIM 2003/13/EMI/RFI	117-1595				
40 x 65 x 120		BIM 2004/14/EMI/RFI	117-1596				
50 x 80 x 150		BIM 2005/15/EMI/RFI	117-1597				
60 x 110 x 190		BIM 2006/16/EMI/RFI	117-1599				

Flanged '2000' Series ABS



- Flanged ABS boxes with integral PCB guides
- Flanges are moulded on the lid which is retained by four M3 screws
- Supplied with screws and PCB supports

Series	H	W	D
2003			
2004			
2005			

230656

Colour	Mfrs. List No.	Order Code	1+	25+	50+	100+
	BIM 2003/13LUG-GY	117-1651				
	BIM 2003/13LUG BLK	117-1650				
	BIM 2004/14LUG-GY	117-1655				
	BIM 2004/14LUG BLK	117-1652				
	BIM 2005/15LUG-GY	117-1657				
	BIM 2005/15LUG BLK	117-1656				

Multipurpose - '4000 Series' (PCB Guides) ABS (Aluminium Panel)



- Moulded in grey ABS with aluminium top panel
- Internally moulded PCB guide slots

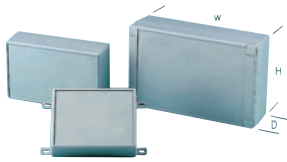
Dimensions	Mfrs. List No.	Order Code	1+	10+	25+	100+
35 x 56 x 85	BIM 4003-GY/PG	117-1603				
48 x 71 x 111	BIM 4004-GY/PG	117-1605				
59 x 96 x 161	BIM 4005-GY/PG	117-1606				

219612

The first online technical portal for design engineers
Log on, research, refine and design

Multipurpose - 'Series 7000' (PCB Guides)

IP54, ABS (Impact Resistant)



- Aesthetically pleasing: screw fixings are hidden behind plastic covers
- Keypad area of different sizes is provided on base and lid
- Guides for PCB in vertical mode are incorporated in base and lid together with 5mm high bosses for horizontal fixing
- Some models can be sealed to IP65 with an optional neoprene gasket
- Optional wall mounting kit available

621981

Dimensions (mm)			Mftrs.	Price Each				
H	W	D	Size List No.	Order Code	1+	10+	25+	50+
Boxes								
			1	BIM 7001/11	117-1633			
			2	BIM 7002/12	117-1634			
			3	BIM 7003/13	117-1635			
			4	BIM 7004/14	117-1636			
			5	BIM 7005/15	117-1637			
			6	BIM 7006/16	117-1638			
			7	BIM 7007/17	117-1639			
			8	BIM 7008/18	117-1642			
			9	BIM 7009/19	117-1643			
Gaskets								
			1 & 2	BIM712	939-006			
			6	BIM706	939-031			
			8 & 9	BIM789	939-055			
					Price Per Set			
Wall Mounting Kit - (set of 4)					117-1644			



www.camdenboss.com

Multipurpose

IP65, ABS



- Easily drilled or punched
- Tongue and groove sealing system with neoprene gasket
- Operating temperature range -20°C to +80°C

218904

Dimensions (mm)			Mftrs.	Price Each				
H	W	D	Order Code	1+	25+	50+	100+	
35	64	58	109-4697					
40	115	65	109-4698					
55	115	65	109-4699					
55	115	90	109-4700					
55	171	121	109-4702					
55	222	146	109-4703					
80	115	90	109-4704					
80	171	121	109-4705					
55	195	80	109-4706					
75	222	146	109-4707					
35	52	50	117-5794					
55	82	80	117-5795					
55	160	80	117-5796					
75	200	120	117-5799					
185	265	95	152-6643					

Dimensions (mm)			Mftrs.	Price Each			
H	W	D	Order Code	1+	25+	50+	100+
60	120	120	117-5800				
90	120	120	117-5801				
60	160	160	117-5802				
90	160	160	117-5803				
90	240	160	152-6644				
120	240	160	152-6645				
86	300	230	152-6646				
111	300	230	152-6647				
150	360	200	152-6648				

Multipurpose

ABS and Polycarbonate



- Designed to IP65 NEMA 4 specification.
- Wall mounting holes and cover attaching screws are outside the sealing area thus preventing ingress of moisture and dust.
- Internal bosses allow mounting of PCB horizontally or connection of terminals etc. into threaded inserts.

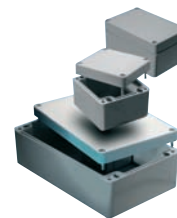
- Cover screws are M 4 stainless steel, non-magnetic and fasten into thread brass inserts.
- Recessed area on cover for sticking membrane keyboard.
- ABS in dark grey cover and lid
- Polycarbonate in light grey cover and lid

499210

External Dimensions (mm) Mftrs.				Price Each				
H	W	D	List No.	Order Code	1+	10+	25+	100+
ABS								
55	100	100	G3101	152-6651				
90	100	100	G3103	152-6652				
55	120	80	G3107	152-6653				
85	120	80	G3109	152-6654				
60	240	120	G3118	152-6656				
100	240	120	G3121	152-6657				
55	200	150	G3122	152-6658				
75	200	150	G3127	152-6659				
122	353	140	G3130	152-6660				
55	190	190	G3125	152-6661				
Polycarbonate								
55	100	100	G2100	152-6663				
55	120	80	G2104	152-6665				
100	240	120	G2117	152-6669				
55	200	150	G2119	152-6670				
75	200	150	G2120	152-6671				
55	190	190	G2135	152-6673				

Watertight Enclosures

Polyester, ABS and Polycarbonate



- Light grey - RAL 7035.
- Design includes a gasketed lid with two piece "tongue and groove" construction.
- Styled lid version has recessed surface on lid for membrane keypad or label
- UL Flammability rating of UL94-HB.
- Designed to meet IP Regulations.
- Includes internal mounting nuts moulded into box and self captivated lid screws.

346109

Dimensions (mm)			Mftrs.	Price Each				
H	W	D	List No.	Order Code	1+	10+	25+	100+
Polyester - IP65								
80	75	55	1590ZGRP081	762-6339				
110	75	55	1590ZGRP082	762-6347				
160	75	55	1590ZGRP083	762-6363				
160	160	90	1590ZGRP161	762-6371				
220	120	90	1590ZGRP123	762-6380				
260	160	90	1590ZGRP162	762-6398				
ABS, Flat Lid - IP66								
65	65	40	1554BGY	408-0750				
90	90	60	1554EGY	408-0865				
120	65	40	1554CGY	408-0786				
120	65	60	1554DGY	408-0828				
120	90	60	1554FGY	408-0919				
120	90	80	1554GGY	408-0956				
120	120	60	1554NGY	408-1109				
120	120	80	1554PGY	408-1146				
160	90	60	1554JGY	408-1020				
160	90	90	1554KGY	408-1067				
160	160	90	1554SGY	408-1213				
160	160	60	1554RGY	408-1171				

Project & General Purpose Enclosures - continued

Watertight Enclosures - continued

Polyester, ABS and Polycarbonate - continued

Dimensions (mm)			Mftrs.	Price Each				
H	W	D	List No.	Order Code	1+	10+	25+	100+
ABS, Flat Lid - IP66								
180	120	60	1554HGY	408-0981				
180	120	90	1554TGY	408-1250				
200	120	90	1554UGY	408-1304				
240	160	90	1554VGY	408-1353				
ABS, Styled Lid - IP66								
120	90	80	1555GGY	100-9489				
160	90	90	1555KGY	100-9490				
200	120	90	1555UGY	100-9491				
Polycarbonate - IP65								
90	90	60	1554E2GY	408-0890				
120	65	40	1554C2GY	408-0804				
120	65	60	1554D2GY	408-0830				
120	90	60	1554F2GY	408-0932				
120	120	60	1554N2GY	408-1122				
160	90	60	1554J2GY	408-1043				
160	160	60	1554R2GY	408-1195				
180	120	60	1554H2GY	407-9334				
180	120	90	1554T2GY	408-1274				
200	120	90	1554U2GY	408-1328				
240	160	90	1554V2GY	408-1377				

Octagon & Trapezoid Diecast Aluminum Enclosures



NEW

- Rugged diecast aluminum alloy electronic instrument enclosure
- Lap joint construction provides protection against access of dust and splashing water
- EMI/RFI shielding
- Unpainted version is vibra finished for a smooth surface with no sharp edges
- Designed to meet IP54
- Low side wall draft angle for easy PCB mounting

638361

Mftrs.	Dimensions (mm)				Price Each					
List No.	Colour	H	W	W	D	Order Code	1+	10+	25+	50+
		Min.	Max.							
Trapezoid										
1590TRPB	Unfinished	39.2	6.15	79	112	197-2764				
1590TRPBBK	Black	39.2	6.15	79	112	197-2766				
1590TRPBOR	Orange	39.2	6.15	79	112	197-2767				
1590TRPBLG	Grey	39.2	6.15	79	112	197-2768				
1590TRPBRD	Red	39.2	6.15	79	112	197-2769				
1590TRPBGR	Grey	39.2	6.15	79	112	197-2770				
1590TRPBCB	Blue	39.2	6.15	79	112	197-2771				
1590TRPC	Unfinished	39	121.8	151	95	197-2772				
1590TRPCBK	Black	39	121.8	151	95	197-2773				
1590TRPCOR	Orange	39	121.8	151	95	197-2774				
1590TRPCLG	Grey	39	121.8	151	95	197-2775				
1590TRPCRD	Red	39	121.8	151	95	197-2776				
1590TRPCGR	Green	39	121.8	151	95	197-2778				
1590TRPCCB	Blue	39	121.8	151	95	197-2779				
Octagon										
1590STPC	Unfinished	39.2	132.8	132.8	197-2780					
1590STPCBK	Black	39.2	132.8	132.8	197-2781					
1590STPCOR	Orange	39.2	132.8	132.8	197-2782					
1590STPCLG	Grey	39.2	132.8	132.8	197-2783					
1590STPCRD	Red	39.2	132.8	132.8	197-2784					
1590STPCGR	Green	39.2	132.8	132.8	197-2785					
1590STPCB	Blue	39.2	132.8	132.8	197-2786					

FREE GLOBAL LEGISLATION SUPPORT



RoHS, REACH, WEEE, ErP, Batteries Directive - latest updates, free white papers and live online Q&A at element14.com/legislation

ABS Miniature - '1551' Series



- Ideally suited for mounting printed circuit boards
- 2 PCB stand-offs moulded into interior
- Two piece lap joint construction provides protection against dust accumulation and splashing water (IP54)
- Satin-textured finish, assembles with two self-tapping screws

230615

Mftrs.	Price Each								
List No.	L	W	D	Order Code	1+	10+	100+	250+	500+
Black									
1551NBK	35	35	15	100-9496					
1551MBK	35	35	20	100-9499					
1551QBK	40	40	15	100-9501					
1551PBK	40	40	20	100-9504					
1551GBK	50	35	20	353-6415					
1551RBK	50	50	20	100-9510					
1551HBK	60	35	20	353-6427					
1551LBK	80	40	15	100-9514					
1551KBK	80	40	20	353-6439					
Key Ring Kit (19mm dia.)									
1427KR				353-6476					

Multipurpose - '1594 Series' (High Impact)



IP54/IP65/Shielded, ABS (Flame Retardant)

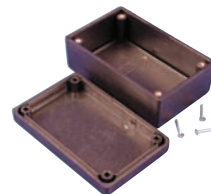


- Rugged electronic instrument boxes, ideal for mounting PCBs
- 3mm thick walls allow box to be used in harsh environments
- Flammability rating of UL94V-0

230616

External Dimensions			Mftrs.	Price Each			
H	W	D	Part No.	Order Code	1+	10+	25+
IP54 Black							
56	56	40	1594ABK	722-741			
81	56	40	1594BBK	722-765			
105	66	45	1594CBK	722-789			
131	66	55	1594DBK	722-807			
167	107	65	1594EBK	722-820			
IP54 Grey							
56	56	40	1594AGY	722-753			
81	56	40	1594BGY	722-777			
105	66	45	1594CGY	722-790			
131	66	55	1594DGY	722-819			
167	107	65	1594EGY	722-832			
IP65 Black							
56	56	40	1594AWBK	722-844			
81	56	40	1594BWBK	722-856			
105	66	45	1594CWBK	722-868			
131	66	55	1594DWBK	722-870			
167	107	65	1594EWBK	722-881			
Accessories							
			Black Belt Clip, Black	1599CLIP	353-6282		
			Grey Belt Clip, Grey	1599CLIPGY	353-6294		

Heavy Duty Conductive Plastic Enclosures



- Designed for EMI/RFI shielding applications - using conductive plastic (a compound of plastic and stainless steel fibers)
- Rugged electronic instrument enclosures, ideally suited for mounting printed circuit boards
- Heavy duty, thick wall design with an average wall thickness of 3.3 mm
- Moulded from a compound of stainless steel fibers and flame retardant ABS

- plastic (carries a UL flammability rating of 94V-0)
- Designed to meet **IP54**
- Countersunk lid is secured with four M3 x 0.5 - 0.71" (18 mm) long, Philips machine screws threaded into integral brass bushings
- Perfect for applications with repetitive assembly and disassembly are required
- Black with matte textured finish

Length	Width	Depth	Mfrs. List No.	Order Code
56	56	40	1594RFIABK	100-9474
81	56	40	1594RFIBBK	100-9475
105	66	45	1594RFICBK	100-9476
131	66	55	1594RFIDBK	100-9477
167	107	65	1594RFIEBK	100-9478

415760

Mfrs. List No.	Order Code	Price Each			
		1+	10+	25+	50+
1594RFIABK	100-9474				
1594RFIBBK	100-9475				
1594RFICBK	100-9476				
1594RFIDBK	100-9477				
1594RFIEBK	100-9478				

Weatherproof Enclosure UL 94 HB, Polycarbonate or ABS



- Weatherproof enclosures available in ABS or polycarbonate
- Designed to meet IP65
- Flame retardant according to **UL94 HB**
- Polycarbonate in Off White, ABS in Light Grey, colour
- Gasketed lid with two piece "tongue & groove" construction
- Rubber gasket is included and must be field installed
- Internal DIN rail mounting tabs
- All fixings supplied
- All styles have a recessed area in the top covers for labels, membrane keypads etc.
- Wall mounting kit available

499341

Dimensions (mm)		Mfrs.		Price Each				
H	W	D	List No.	Order Code	1+	10+	25+	50+
Polycarbonate								
40	60	40	MCRP1020	152-0402				
105	75	40	MCRP1080	163-5129				
125	85	55	MCRP1130	152-0407				
55	85	55	MCRP1170	152-0413				
145	105	60	MCRP1210	163-5133				
220	165	60	MCRP1450	163-5134				
75	125	75	MCRP1240	152-0418				
220	165	85	MCRP1460	163-5135				
ABS								
40	60	40	MCRP1025	152-0403				
55	80	55	MCRP1065	152-0406				
125	85	55	MCRP1135	152-0409				
55	85	165	MCRP1175	152-0414				
145	105	60	MCRP1215	163-5139				
220	165	60	MCRP1455	163-5140				
125.50	166	80	MCRP1245	152-0419				
75	146	75	MCRP1285	152-0421				
85	85	85	MCRP1155	152-0412				
85	85	85	MCRP1185	152-0417				
220	165	85	MCRP1465	163-5142				
ABS - Clear Polycarbonate Lid								
145	105	60	MCRP1215C	163-5150				
220	165	85	MCRP1465C	163-5156				
Accessories								
			Wall Mounting Kit MCMF0041	152-0422				

Multipurpose (Standard & Flanged Lid) IP54/IP65 Diecast



- Rugged electronic enclosure, die-cast in aluminium alloy
- Easy to machine, perfect for audio and RF shielding
- RF/EMI shielded
- Lap jointed lid, fastened by machine screws into threaded holes
- Standard and flanged lid versions meet **IP54**
- Watertight **IP65** versions of standard and flanged lid complete the range

621986

Dimensions (mm)		Mfrs.		Price Each				
H	W	D	List No.	Order Code	1+	5+	10+	25+
Standard Box								
52.5	38	31	1590H	427-3059				
51	51	31	1590LB	929-980				
93	39	31	1590A	306-1589				
100	50	25	1590G	382-4410				
112	60	31	1590B	306-1590				
111	82	44	1590S	929-992				
119	94	34	1590BB	930-003				
121.1	66	35.3	1590N1	382-4421				
145	95	49	1590J	427-3060				
145	121	39	1590XX	NEW 182-9813				
145	121	56	1590X	NEW 182-9814				
188	119.5	37	1590DD	306-1607				
192	111	61	1590R1	382-4433				
153	82	50	1590P1	306-1619				
50	50	25	1590LLB	100-9517				
188	120	56	1590D	306-1620				
120	94	56.5	1590C	306-1632				
120	80	59	1590T	930-015				
120	120	59	1590U	930-027				
125	125	79	1590K	427-3072				
120	120	94	1590V	930-039				
92	92	42	1590Y	100-9518				
188	188	67	1590F	930-040				
188	120	82	1590E	306-1644				
120	120	32	1590Q	100-9519				
125	125	57	1590KK	100-9520				

Dimensions (mm)		Mfrs.		Price Each				
H	W	D	List No.	Order Code	1+	10+	25+	50+
Watertight Standard Box								
93	39	31	1590WA	306-1668				
112	60	31	1590WB	306-1670				
119	94	34	1590WBB	306-1681				
188	120	56	1590WD	306-1723				
120	94	57	1590WC	306-1735				
120	120	59	1590WU	306-1759				
188	188	67	1590WF	306-1760				
188	120	82	1590WE	306-1772				
120	120	32	1590WQ	100-9528				

Dimensions (mm)		Mfrs.		Price Each				
H	W	D	List No.	Order Code	1+	10+	25+	50+
Flanged Lid Box								
51	51	31	1590LBFL	306-1796				
93	39	31	1590AFL	306-1802				
100	50	25	1590GFL	382-4470				
112	60	31	1590BFL	306-1814				
119	94	34	1590BBFL	306-1826				
121.1	66	39.3	1590N1FL	382-4482				
145	121	39	1590XXFL	NEW 182-9818				
145	121	56	1590XFL	NEW 182-9819				
111	82	44	1590SFL	306-1840				
153	82	50	1590P1FL	306-1851				
188	120	56	1590DFL	306-1917				
120	94	57	1590CFL	306-1929				
121	80	59	1590TFL	306-1930				
120	120	59	1590UFL	306-1942				
188	188	67	1590FFL	306-1954				
188	120	82	1590EFL	306-1966				
120	120	94	1590VFL	306-1978				

Dimensions (mm)		Mfrs.		Price Each				
H	W	D	List No.	Order Code	1+	10+	25+	50+
Watertight Flanged Lid Box								
93	39	31	1590WAF	306-1991				
112	60	31	1590WBF	306-2004				
119	94	34	1590WBBFL	306-2016				
121.1	66	39.3	1590WN1FL	384-2587				
153	82	50	1590WP1FL	306-2041				
188	120	56	1590WDFL	306-2053				
121	80	59	1590WTFL	306-2077				

Dimensions (mm)		Mfrs.		Price Each				
H	W	D	List No.	Order Code	1+	10+	25+	50+
Standard Black Box								
50	50	25	1590LLBBK	100-9521				
51	51	31	1590LBK	443-7100				
52.5	38	31	1590HBK	443-7111				
93	39	31	1590ABK	443-7123				
92	92	42	1590YBK	100-9522				
100	50	25	1590GBK	443-7135				
111	82	44	1590SBK	443-7147				
112	60	31	1590BBK	443-7159				
119	94	34	1590BBBK	443-7160				
120	120	59	1590UBK	443-7172				
120	94	56.5	1590CBK	443-7196				
120	80	59	1590TBK	443-7202				
120	120	32	1590QBK	100-9523				
121.1	66	39.3	1590N1BK	443-7214				
125	125	79	1590KBK	443-7226				
145	95	49	1590JBK	443-7238				
145	121	39	1590XXBK	NEW 182-9815				

Project & General Purpose Enclosures - continued

Multipurpose (Standard & Flanged Lid) - continued

IP54/IP65 Diecast - continued

Dimensions (mm)			Mftrs.	Price Each				
H	W	D	List No.	Order Code	1+	5+	10+	25+
Standard Black Box								
145	121	56	1590XBK	NEW 182-9817				
153	82	50	1590P1BK	443-7240				
188	120	56	1590DBK	443-7251				
188	120	82	1590EBK	443-7263				
188	188	67	1590FBK	443-7275				
188	119.5	37	1590DDBK	443-7287				
192	111	61	1590R1BK	443-7299				
Flanged Lid Black Box								
51	51	31	1590LBFLBK	443-7305				
93	39	31	1590AFLBK	443-7317				
100	50	25	1590GFLBK	443-7329				
111	82	44	1590SFLBK	443-7330				
112	60	31	1590BFLBK	443-7342				
119	94	34	1590BBFLBK	443-7354				
120	120	59	1590UFLBK	443-7366				
120	94	57	1590CFLBK	443-7380				
121	80	59	1590TFLBK	443-7391				
121.1	66	39.3	1590N1FLBK	443-7408				
145	121	39	1590XXFLBK	NEW 182-9820				
145	121	56	1590XFLBK	NEW 182-9821				
153	82	50	1590P1FLBK	443-7410				
188	120	56	1590DFLBK	443-7421				
188	120	82	1590EFLBK	443-7433				
188	188	67	1590FFLBK	443-7445				
188	119.5	37	1590DDFLBK	443-7457				
192	111	61	1590R1FLBK	443-7469				
Watertight Standard Lid Black Box								
51	51	31	1590WLBBK	443-7470				
93	39	31	1590WABK	443-7494				
100	50	25	1590WGBK	443-7500				
111	82	44	1590WSBK	443-7512				
112	60	31	1590WBBK	443-7524				
121.1	66	39.3	1590WN1BK	443-7585				
153	82	50	1590WP1BK	443-7615				
188	120	56	1590WDBK	443-7627				
188	120	82	1590WEBK	443-7639				
188	188	67	1590WFBK	443-7640				
Watertight Flanged Black Box								
51	51	31	1590WLFLBK	443-7676				
111	82	44	1590WSFLBK	443-7706				
112	60	31	1590WFBLBK	443-7718				
119	94	34	1590WBBFLBK	443-7720				
120	94	57	1590WCFLBK	443-7755				
188	120	56	1590WDFLBK	443-7792				

Small Plastic Enclosures

Flanged and Unflanged



- Ideally suited for mounting small printed circuit boards or used as potting boxes
- Flanged lid is perfect for wall or shelf mounting or suspending with a tie wrap
- Satin texture finish
- Complete with lid and self tapping screws
- Screws are color matched to enclosure (nickel plated screws with grey enclosures and black plated with black enclosures)
- Lap joint construction provides protection against access of dust and splashing water
- Designed to meet **IP54**

Universal Flange Kits		Enclosure Type		Flange Kit	
Enclosure Type	Flange Kit	1591G	1591H	1591I	1591V
1591L	1591F1BK-2	1591H	1591I	1591F1BK-2	1591F2BK-2
1591A	1591F1BK-2	1591I	1591T	1591F2BK-2	1591F3BK-2
1591B	1591F1BK-2	1591U	1591V	1591F3BK-2	1591F3BK-2
1591C	1591F1BK-2				
1591D	1591F2BK-2				
1591E	1591F3BK-2				

415759

Mftrs.	Dimensions H x W x D (mm)	Order Code	1+	10+	25+	50+
ABS - Black. PCB Standoffs - Flanged						
1551NFLBK	35 x 35 x 15	100-9445				
1551MFLBK	35 x 35 x 20	100-9447				
1551QFLBK	40 x 40 x 15	100-9451				
1551PFLBK	40 x 40 x 20	100-9453				
1551FFLBK	50 x 35 x 15	100-9456				
1551GFLBK	50 x 35 x 20	100-9458				
1551RFLBK	50 x 50 x 20	100-9463				
1551JFLBK	60 x 35 x 15	100-9465				
1551HFLBK	60 x 35 x 20	100-9467				
1551LFLBK	80 x 40 x 15	100-9469				
1551KFLBK	80 x 40 x 20	100-9471				
ABS - Black. PCB Guides - Flanged						
1591MFLBK	85 x 56 x 25	384-8565				
1591LFLBK	85 x 56 x 39	384-8577				
1591AFLBK	100 x 50 x 25	384-8589				
1591SFLBK	110 x 82 x 44	384-8590				
1591BFLBK	112 x 62 x 31	384-8607				
1591CFLBK	120 x 65 x 40	384-8619				
1591TFLBK	120 x 80 x 59	384-8620				
1591UFLBK	120 x 120 x 59	384-8632				
1591VFLBK	120 x 120 x 94	384-8644				
1591GFLBK	121 x 94 x 34	384-8656				
1591DFLBK	150 x 80 x 50	384-8668				
1591HFLBK	165 x 71 x 29	384-8670				
1591EFLBK	191 x 110 x 61	384-8681				
ABS - Black. PCB Guides - Unflanged						
1591MBK	85 x 56 x 25	443-6842				
1591LBK	85 x 56 x 39	443-6854				
1591ABK	100 x 50 x 25	443-6866				
1591SBK	110 x 82 x 44	443-6878				
1591BBK	112 x 62 x 31	443-6880				
1591CBK	120 x 65 x 40	443-6891				
1591TBK	120 x 80 x 59	443-6908				
1591UBK	120 x 120 x 59	443-6910				
1591VBK	120 x 120 x 94	443-6921				
1591GBK	121 x 94 x 34	443-6933				
1591DBK	150 x 80 x 50	443-6945				
1591EBK	191 x 110 x 61	443-6969				
ABS - Grey. PCB Guides - Unflanged						
1591MGY	85 x 56 x 25	443-6970				
1591LGY	85 x 56 x 39	443-6982				
1591AGY	100 x 50 x 25	443-6994				
1591SGY	110 x 82 x 44	443-7007				
1591BGY	112 x 62 x 31	443-7019				
1591CGY	120 x 65 x 40	443-7020				
1591TGY	120 x 80 x 59	443-7032				
1591GGY	121 x 94 x 34	443-7068				
1591DGY	150 x 80 x 50	443-7070				
1591EGY	191 x 110 x 61	443-7093				
ABS - Black - Unflanged						
1591XXLBK	87 x 57 x 39	124-4187				
1591XXABK	100 x 51 x 25	124-4189				
1591XXBBK	113 x 63 x 31	124-4191				
1591XXCBK	121 x 66 x 40	124-4192				
1591XXTBK	123 x 83 x 59	124-4193				
1591XXDBK	152 x 82 x 50	124-4194				
1591XXEBK	193 x 113 x 61	124-4195				
ABS - Black - Flanged						
1591XXLFLBK	87 x 57 x 39	124-4203				
1591XXAFLBK	100 x 51 x 25	124-4204				
1591XXBFLBK	113 x 63 x 31	124-4205				
1591XXCFLBK	121 x 66 x 40	124-4207				
1591XXTFLBK	123 x 83 x 59	124-4208				
1591XXDFLBK	152 x 82 x 50	124-4209				
ABS - Black						
1591MSFLBK	85 x 56 x 25	142-6592				
1591LSFLBK	85 x 56 x 39	142-6594				
1591BSFLBK	112 x 62 x 31	142-6597				
1591CSFLBK	120 x 65 x 40	142-6598				
1591GSFLBK	121 x 94 x 34	142-6602				
1591DSFLBK	150 x 80 x 50	142-6603				
1591HSFLBK	165 x 71 x 29	142-6604				
1591ESFLBK	191 x 110 x 61	142-6605				

Translucent Polycarbonate



- Ice blue translucent and red translucent polycarbonate enclosures
- Totally transparent to blue, white and near white LEDs, readouts and displays
- Integral card guide accepts 1.5mm (0.062") PC cards
- Designed to meet **IP54**
- Flammability rating of **UL 94V-0**
- Lid secured with M3 x 10mm Philips screws



Mfrs. List No.	L	W	D	Order Code	1+	10+	25+	50+
Blue								
1591ATBU	100	50	25	381-8743	●			
1591XXATBU	100	51	25	151-1174	●			
1591XXLTBU	87	57	39	151-1173	●			
1591BTBU	112	62	31	381-8755	●			
1591XXBTBU	113	63	31	151-1175	●			
1591CTBU	120	65	40	381-8767	●			
1591XXCTBU	121	66	40	151-1176	●			
1591DTBU	150	80	50	381-8779	●			
1591ETBU	191	110	61	381-8780	●			

Extruded Aluminium - Channel Mount

1455NC Series



- Designed to house P.C. boards or equipment - for easy enclosure mounting to aluminum channel
- P.C. boards mount horizontally by sliding into internal slots extruded into the enclosure body.
- Rugged one piece body - constructed from extruded aluminum with a minimum thickness of 2.29mm



External Dimensions			Mfrs. Part No.	Order Code	1+	10+	25+	50+
H	W	D						
Open Front & Rear Bezels With Metal Endplates								
53	103	120	1455NC1201	210-2130	●			
53	103	160	1455NC1601	210-2132	●			
53	103	220	1455NC2201	210-2135	●			
Solid ABS Plastic Front & Rear Bezels								
53	103	120	1455NC1202	210-2131	●			
53	103	160	1455NC1602	210-2133	●			
53	103	220	1455NC2202	210-2136	●			
Accessories								
Mounting Kit			1455TBOLT	210-2137	●			
T Nut			1455TNUT	210-2138	●			
T Spring Nut			1455TSNUT	210-2139	●			

Diecast Aluminum Enclosures



"Stomp Box"



- Diecast aluminum alloy electronic instrument enclosure
- Coated with a smooth gloss polyester powder paint for a lasting finish
- Lap joint construction provides protection against access of dust and splashing water
- Designed to meet IP54
- Low side wall draft angle (2 degrees or less) for easy P.C. board mounting

Mfrs. List No.	Colour	H	W	D	Order Code	1+	10+	25+	50+
Rectangular									
1590BCB	Blue	112	60	31	184-2995	●			
1590BGR	Green	112	60	31	184-2996	●			
1590BLG	Grey	112	60	31	184-2998	●			
1590BOR	Orange	112	60	31	184-2999	●			
1590BRD	Red	112	60	31	184-3001	●			
1590BBPR	Purple	34	94	119	210-2140	●			
1590BBLG	Yellow	34	94	119	210-2141	●			
1590BBBC	Blue	119	94	34	184-3002	●			
1590BBGR	Green	119	94	34	184-3003	●			
1590BBLG	Grey	119	94	34	184-3004	●			
1590BBOR	Orange	119	94	34	184-3005	●			

Mfrs. List No.	Colour	H	W	D	Order Code	1+	10+	25+	50+
Rectangular									
1590BBRD	Red	119	94	34	184-3006	●			
1590BPR	Purple	31	60	112	210-2142	●			
1590BYL	Yellow	31	60	112	210-2143	●			
1590XXCB	Blue	145	121	39	184-3007	●			
1590XXGR	Green	145	121	39	184-3008	●			
1590XXLG	Grey	145	121	39	184-3009	●			
1590XXOR	Orange	145	121	39	184-3010	●			
1590XXRD	Red	145	121	39	184-3012	●			

Mfrs. List No.	Colour	H	W	D	Order Code	1+	10+	25+	50+
Octagonal									
1590STPCPR	Purple	39.2	132.8	132.8	210-2147	●			
1590STPCYL	Yellow	39.2	132.8	132.8	210-2148	●			

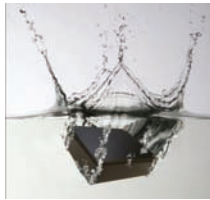
Mfrs. List No.	Colour	H	W	D	Order Code	1+	10+	25+	50+
Narrow Trapezoid									
1590TRPBPR	Purple	39.2	79 / 61	112	210-2149	●			
1590TRPBYL	Yellow	39.2	79 / 61	112	210-2150	●			

Mfrs. List No.	Colour	H	W	D	Order Code	1+	10+	25+	50+
Wide Trapezoid									
1590TRPCPR	Purple	39	151 / 122	95	210-2151	●			
1590TRPCYL	Yellow	39	151 / 122	95	210-2152	●			

Multipurpose (Standard & Flanged)



IP68, Diecast



- A range of die cast aluminum enclosures sealed to IP66, IP67 and IP68
- Neoprene rubber seal with self adhesive backing
- Lid secured by M3.5 x 12 fixing screws
- Pre-drilled flange option
- Min. Seal thickness: 3mm
- Min. seal frame width: 4mm
- Min enclosure wall thickness: 1.5mm
- Min enclosure lid thickness: 1.5mm

Mfrs. List No.	Length	Width	Height	Internal Guide Slot	Order Code
Standard					
480-0010	88.9	34.9	30.5	×	177-4842
480-0020	114.3	63.5	30.5	×	177-4843
480-0030	114.3	88.9	55.9	×	177-4844
480-0040	114.3	64.5	55.9	×	177-4845
480-0050	171.5	120.6	55.9	×	177-4846
480-0060	171.5	120.6	106.7	×	177-4847
480-0070	222.3	146	55.9	×	177-4848
480-0080	222.3	146	106.7	×	177-4849
480-0090	275	175	66	✓	177-4850
480-0100	139.7	101.6	77	✓	177-4851
480-0110	167	127	77	✓	177-4853
480-0120	120	100	36	✓	177-4854
480-0130	250	250	100.3	✓	177-4855
480-0140	80	55	26	✓	177-4856
480-0150	60	55	31	✓	177-4857
Flanged					
483-0010	89.2	35.1	30.5	✓	177-4858
483-0020	114.1	63.6	30.5	✓	177-4859
483-0030	114.2	89.1	55.9	✓	177-4860
483-0040	114.7	63.7	55.9	✓	177-4861
483-0050	171.8	120.8	55.9	✓	177-4862
483-0060	171.8	120.8	106.7	✓	177-4863
483-0070	222.6	146.4	55.9	✓	177-4865
483-0100	140	101.6	77	✓	177-4866
483-0120	119.8	100.2	36	✓	177-4867

Mfrs. List No.	Order Code	1+	10+	25+	50+
Standard					
480-0010	177-4842	●			
480-0020	177-4843	●			
480-0030	177-4844	●			
480-0040	177-4845	●			
480-0050	177-4846	●			
480-0060	177-4847	●			
480-0070	177-4848	●			
480-0080	177-4849	●			
480-0090	177-4850	●			
480-0100	177-4851	●			
480-0110	177-4853	●			
480-0120	177-4854	●			
480-0130	177-4855	●			
480-0140	177-4856	●			
480-0150	177-4857	●			
Flanged					
483-0010	177-4858	●			
483-0020	177-4859	●			
483-0030	177-4860	●			
483-0040	177-4861	●			

Project & General Purpose Enclosures - continued

Multipurpose (Standard & Flanged) - continued

IP68, Diecast - continued

Mftrs. List No.	Order Code	Price Each			
		1+	10+	25+	50+
Flanged					
483-0050	177-4862				
483-0060	177-4863				
483-0070	177-4865				
483-0100	177-4866				
483-0120	177-4867				

Electrical Enclosures

aluPLUS



- Stylish aluminium enclosures for industrial electronics & electrical equipment
- Industry standard installation dimensions for the mounting plates and PCBs
- High quality diecastings
- Go anywhere: wall, bulkhead, machine etc.
- Lid recess for fitting a membrane keypad or product label

- Clip-on lid cover trims hide all the fixing and mounting screws
- Enclosure can be mounted even while closed
- Internal screw bosses for mounting PCBs, mounting plates and assemblies

Colour	Grey	IP Rating	65
Material	Aluminium	Operating Temperature	-50°C to 140°C

Dimensions (mm)			Mftrs. List No.	Order Code	Price Each			
H	W	D			1+	10+	25+	50+
82	120	122	196.120.000	187-7972				
82	120	220	196.122.000	187-7973				
90	160	160	196.161.000	187-7974				
90	160	260	196.162.000	187-7976				



NEW

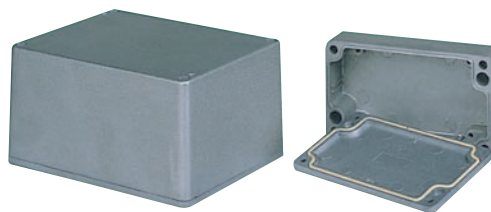
Dimensions (mm)			Mftrs. List No.	Order Code	Price Each		
H	W	D			1+	25+	50+
80	139	150	280.120.000	187-7988			

With Transparent Cover

93.5	139	150	280.120.100	187-7989		
------	-----	-----	-------------	----------	--	--

Multipurpose

IP65, Diecast



- Diecast aluminium, resistant to moisture and dust ingress.
- Sealed with neoprene gasket. Designed to IP65.
- Mountings and lid fixings outside of seal.
- Integral PCB guide slots (except 109-4718).

Wall Thickness 3.3mm

230599

Mftrs. List No.	External Dimensions			Order Code	Price Each			
	H	W	D		1+	25+	100+	500+
G102	36	90	30	117-5781				
G103	98	64	34	109-4682				
G104	58	64	35	109-4718				
G105	31	55.5	41	NEW 185-7189				
G106	65	115	30	109-4719				
G107	125	80	40	109-4684				
G108	125	80	57	109-4685				
G109	150	63	36.5	109-4686				
G110	52	79.6	74.6	NEW 185-7190				
G111	65	115	55	109-4720				
G112	25.5	102.5	52.5	NEW 185-7191				
G113	90	115	55	109-4721				
G115	108	148	75	117-5782				
G116	160	100	60	109-4687				
G117	160	100	81	109-4689				
G118	60	175	80	NEW 185-7192				
G120	121	171	55	117-5783				
G123	75	200	120	NEW 185-7193				
G124	55	222	146	152-6683				
G125	82	222	146	152-6685				
G137	120.5	120.5	120.5	152-6684				
G139	158.5	158.5	158.5	152-6687				
G155	90.5	260	160	NEW 185-7194				

Electrical Enclosures

aluCLIC



- Modern electronic enclosures designed for fast installation and replacement
- No need to open the lid to wall mount or dismount the enclosure
- The mounting device locates on the underside of the enclosure, and a spring loaded latch secures the case with a "CLICK"

- No visible fixings; the lid screws are hidden on the underside of the base
- Recess in the lid for locating a membrane keypad or product label
- Go anywhere: wall, bulkhead, machine etc.
- Internal screw pillars for mounting PCBs and assemblies

Colour	Grey	IP Rating	67
Material	Aluminium	Operating Temperature	-40°C to 120°C

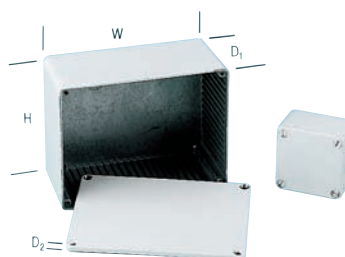
Dimensions (mm)			Mftrs. List No.	Order Code	Price Each			
H	W	D			1+	10+	25+	50+
70	90	130	240.092.000	187-7978				
70	110	160	240.112.000	187-7979				
70	130	200	240.132.000	187-7980				



NEW

Multipurpose - '5000 Series' (PCB Guides)

IP65, Diecast (Nylon Coated)



- Nylon coated (75 Microns) diecast boxes
- Each has 1.5mm (0.62") slots for PCBs
- Optional wall mounting feet available

230603

Boxes	External Dimensions					Order Code	Price Each			
	H	W	D ₁	D ₂	Size		1+	50+	100+	500+
31	50	27	4	1	117-1624					
25	50	21	4	2	117-1625					
31	62	27	4	3	117-1626					
40	66	36	4	4	117-1627					
50	82	46	4	5	117-1629					
61	112	56	4	6	117-1631					
61	95	57	4	7	117-1632					

Price Per Set

1+

Wall Mounting Feet (Set of 4)	117-1675	
-------------------------------	----------	--

Multipurpose (PCB Guides)

Diecast



- Aluminium diecast boxes to LM24. Internal lip provides RFI/EMI shielding
- Selected boxes have internal PCB guide slots

Order Code	External Dimensions (mm)				Internal Guide Slots	Mfrs. List No.
	H ₁	H ₂	W	D		
278-804	30	4	55	60	YES	459-0150
525-601	29.5	4	34.9	88.9	NO	459-0010
525-595	25	4	55	80	YES	459-0140
525-613	29.5	4	63.5	114.3	NO	459-0020
525-625	54.9	4	64.5	114.3	NO	459-0040
525-637	54.9	4	88.9	114.3	NO	459-0030
525-649	54.9	4	120.6	171.5	NO	459-0050
278-816	35	4	100	120	YES	459-0120
525-650	105.7	4	120.6	171.5	NO	459-0060
278-841	54.9	4	146	222.3	NO	459-0070
278-828	76	4	101.6	139.7	YES	459-0100
278-853	146	4	105.7	222.3	NO	459-0080
278-830	76	4	127	165	YES	459-0110
278-865	65	4	175	275	YES	459-0090
278-877	99.3	4	250	250	YES	459-0130

Price Each

Order Code	Price Each				
	1+	25+	50+	100+	250+
278-804					
525-601					
525-595					
525-613					
525-625					
525-637					
525-649					
278-816					
525-650					
278-841					
278-828					
278-853					
278-830					
278-865					
278-877					



Flanged, RFI/EMI Shielded (PCB Guides)

Diecast



- Aluminium diecast boxes with pre-drilled mounting flanges
- Flanges allow box to be surface mounted without restriction of internal mounting screws
- Supplied unfinished, but will accept most finishes with minimum preparation

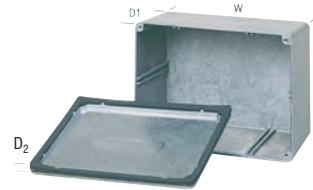
Mfrs. List No.	Order Code	W ₂	D ₁	H ₁	H ₂	D ₂	W ₁	Flange Hole Fixing Centres
455-0010	278-889	35.1	89.2	30	4	25	114	102 x 5 dia
455-0020	278-890	63.6	114.1	30	4	45	140	127 x 30 x 5 dia
455-0040	278-907	63.7	114.7	55	4	45	140	127 x 30 x 5 dia
455-0030	278-919	89.1	114.2	55	4	69	140	127 x 50 x 5 dia
455-0120	278-920	100.2	120	35	4	80	150	137 x 60 x 5 dia
455-0100	278-932	101.6	140	76	4	80	170	157 x 60 x 5 dia
455-0050	278-956	120.8	171.8	55	4	100	202	189 x 80 x 5 dia
455-0060	278-968	120.8	171.8	106	4	100	202	189 x 80 x 5 dia
455-0070	278-970	146.4	222.6	55	4	118	252	239 x 98 x 5 dia

Price Each

Order Code	Price Each			
	1+	10+	25+	100+
278-889				
278-890				
278-907				
278-919				
278-920				
278-932				
278-956				
278-968				
278-970				

Multipurpose, RFI/EMI Shielded

IP66, Diecast



- Aluminium diecast boxes to LM24
- Supplied with adhesive backed neoprene seal
- Internal guide slots available on selected boxes
- RFI/EMI shielded without seal

External Dimensions				No. Lid Fixing Screws	Internal Guide Slots	Mfrs. List No.	Order Code
H	W	D ₁	D ₂				
26	55	80	5	4	YES	460-0140	587-618
30.5	63.5	114.3	5	4	NO	460-0020	279-043
55.9	64.5	114.3	5	4	NO	460-0040	279-055
55.9	88.9	114.3	5	4	NO	460-0030	279-067
36	100	120	5	4	YES	460-0120	587-590
101.6	77	139.7	5	4	YES	460-0100	279-079
77	127	165	5	6	YES	460-0110	279-080
55.9	120.6	171.5	5	6	NO	460-0050	279-092
106.7	120.6	171.5	5	6	NO	460-0060	279-109
55.9	146	222.3	5	6	NO	460-0070	279-110
106.7	146	222.3	5	6	NO	460-0080	279-122
100.3	250	250	5	8	YES	460-0130	587-606
66	175	275	5	6	YES	460-0090	587-588

Price Each

Order Code	Price Each			
	1+	10+	25+	50+
587-618				
279-043				
279-055				
279-067				
587-590				
279-079				
279-080				
279-092				
279-109				
279-110				
279-122				
587-606				
587-588				



Flanged, RFI/EMI Shielded (PCB Guides)

IP66, Diecast



- Flanged aluminium diecast boxes to LM24
- Supplied with adhesive backed neoprene rubber seal
- RFI/EMI shielded without seal

External Dimensions				Flange Hole Fixing Centres		Mfrs. List No.	Order Code
H1	H2	W1	W2	D1	D2		
30.5	25	114	35.1	26	5	456-0010	279-134
30.5	45	140	63.6	26	5	456-0020	279-146
55.9	45	140	63.7	51	5	456-0040	525-662
55.9	69	140	89.1	51	5	456-0030	279-158
36	80	150	100.2	31	5	456-0120	587-679
77	80	170	101.6	72	5	456-0100	587-655
55.9	100	202	120.8	51	5	456-0050	587-631
55.9	118	252	146.4	51	5	456-0070	587-643

Price Each

Order Code	Price Each			
	1+	10+	25+	100+
279-134				
279-146				
525-662				
279-158				
587-679				
587-655				
587-631				
587-643				

Project & General Purpose Enclosures - continued

Powder Coated Grey & Black Aluminium Enclosures



A range of diecast boxes in various sizes, manufactured in a robust aluminium alloy. These lightweight enclosures provide excellent screening against EMI/RFI and are therefore ideal housing for electronic components and circuits. The close fitting lid is secured using countersunk screws. Available in Black (RAL 9005) or Grey (BS4800/18B25). Screw size M3.5 x 9mm.

Operating Temperature -40 to 110°C (In Air)

W	Dimensions		Mftrs. List No.	Order Code
	H	D		
Grey				
34.9	29.5	88.9	461-0010	916-5649
63.5	29.5	114.3	461-0020	916-5665
88.9	54.9	114.3	461-0030	916-5681
64.5	54.9	114.3	461-0040	916-5703
120.6	54.9	171.5	461-0050	916-5720
120.6	105.7	171.5	461-0060	916-5746
146	54.9	222.3	461-0070	916-5754
146	105.7	222.3	461-0080	916-5770
175	65	275	461-0090 *	916-5789
101.6	76	139.7	461-0100 *	916-5800
250	99.3	250	461-0130 *	916-5843
Black				
34.9	29.5	88.9	461-0010E	916-5657
63.5	29.5	114.3	461-0020E	916-5673
88.9	54.9	114.3	461-0030E	916-5690
64.5	54.9	114.3	461-0040E	916-5711
120.6	54.9	171.5	461-0050E	916-5738
146	54.9	222.3	461-0070E	916-5762
175	65	275	461-0090E *	916-5797
127	76	165	461-0110E *	916-5819
250	99.3	250	461-0130E *	916-5851

* - Available with Integral PCB Guides

403718

Mftrs. List No.	Order Code	Price Each			
		1+	10+	25+	50+
Grey					
461-0010	916-5649				
461-0020	916-5665				
461-0030	916-5681				
461-0040	916-5703				
461-0050	916-5720				
461-0060	916-5746				
461-0070	916-5754				
461-0080	916-5770				
461-0090	916-5789				
461-0100	916-5800				
461-0130	916-5843				
Black					
461-0010E	916-5657				
461-0020E	916-5673				
461-0030E	916-5690				
461-0040E	916-5711				
461-0050E	916-5738				
461-0070E	916-5762				
461-0090E	916-5797				
461-0110E	916-5819				
461-0130E	916-5851				

Die-Cast Aluminium Enclosures



- Die-cast aluminium alloy enclosures
- Designed to meet IP65 and NEMA4 through the use of neoprene gasket with the universal tongue and groove seal system
- Easy wall mounting using base flange holes
- Base mount PCB Supports



Mftrs. List No.	Dimensions (mm)			Order Code	Price Each			
	H	W	D		1+	10+	25+	50+
Unpainted								
G102MF	30	36	90	190-2552				
G104MF	35	58	64	190-2553				
G106MF	30	65	115	190-2554				
G111MF	55	65	115	190-2555				
G113MF	55	90	115	190-2557				

634378

Mftrs. List No.	Dimensions (mm)			Order Code	Price Each			
	H	W	D		1+	10+	25+	50+
Unpainted								
G115MF	75	108	148	190-2558				
G120MF	55	121	171	190-2559				
G124MF	55	146	222	190-2560				
G125MF	82	146	222	190-2561				
Grey								
G102MFLG	30	36	90	190-2562				
G104MFLG	35	58	64	190-2563				
G106MFLG	30	65	115	190-2564				
G111MFLG	55	65	115	190-2565				
G113MFLG	55	90	115	190-2566				
G115MFLG	75	108	148	190-2567				
G120MFLG	55	121	171	190-2569				
G124MFLG	55	146	222	190-2571				
G125MFLG	82	146	222	190-2572				
Black								
G102MFBK	30	36	90	190-2573				
G104MFBK	35	58	64	190-2574				
G106MFBK	30	65	115	190-2575				
G111MFBK	55	65	115	190-2576				
G113MFBK	55	90	115	190-2577				
G115MFBK	75	108	148	190-2578				
G120MFBK	55	121	171	190-2579				
G124MFBK	55	146	222	190-2580				
G125MFBK	82	146	222	190-2582				

Watertight - Flanged Lid

1555 "F" Series



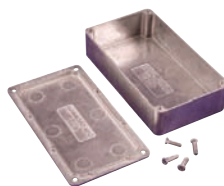
- Designed for harsh industrial environments or outdoor applications (security, outdoor wireless, controls etc. etc.)
- Ideally suited for mounting printed circuit boards, panels or DIN rail mounted components
- Satin texture finish with smooth recessed surface on lid for a membrane keypad or label
- Designed to meet IP 67 & NEMA 4, 4X, 12 & 13 ratings
- Flanged lid is secured with self captivated - M4 stainless steel machine screws

613029

Mftrs. List No.	Dimension (mm)			Order Code	Price Each			
	H	W	D		1+	10+	25+	50+
ABS Plastic								
1555CF22GY	42	66	120	182-9799				
1555CF42GY	62	66	120	182-9801				
1555FF17GY	37	91	120	182-9802				
1555FF42GY	62	91	120	182-9803				
1555NF17GY	37	120	120	197-2756				
1555NF42GY	62	120	120	197-2757				
1555JF17GY	37	91	159	182-9805				
1555JF42GY	62	91	159	182-9806				
1555HF17GY	37	120	180	197-2758				
1555HF42GY	62	120	180	197-2759				
Polycarbonate								
1555C2F22GY	42	66	120	182-9807				
1555C2F42GY	62	66	120	182-9808				
1555F2F17GY	37	91	120	182-9809				
1555F2F42GY	62	91	120	182-9810				
1555N2F17GY	37	120	120	197-2760				
1555N2F42GY	62	120	120	197-2761				
1555J2F17GY	37	91	159	182-9811				
1555J2F42GY	62	91	159	182-9812				
1555H2F17GY	37	120	180	197-2762				
1555H2F42GY	62	120	180	197-2763				

Diecast Enclosures

1550 Series



- Rugged, diecast aluminium alloy enclosure
- Unpainted version is vibra finished for a smooth surface with no sharp edges
- Lap joint construction protection against access of dust and splashing water
- Lap joint construction provides for improved EMI/RFI shielding
- Low side wall draft angle for easy P.C. board mounting

609510

Mfrs. List No.	Dimensions (mm)			Order Code	Price Each			
	L	W	D		1+	10+	25+	50+
Unpainted - IP54								
1550A	89	35	30	182-3031				
1550B	115	64	30	182-3032				
1550C	115	90	55	182-3033				
1550D	115	64	55	182-3034				
1550E	171	121	55	182-3035				
1550F	171	121	105	182-3037				
1550G	222	146	55	182-3038				
1550H	222	146	105	182-3039				
1550J	275	175	66.6	182-3040				
1550K	140	102	76.6	182-3041				
1550L	165	127	76.5	182-9824				
1550M	120	100	35.4	182-3042				
1550N	250	250	101.3	182-3043				
1550P	80	55	25	182-3044				
1550Q	60	55	30	182-3045				

Mfrs. List No.	Dimensions (mm)			Order Code	Price Each			
	L	W	D		1+	10+	25+	50+
Black - IP54								
1550ABK	89	35	30	182-3046				
1550BBK	115	64	30	182-3047				
1550CBK	115	90	55	182-3049				
1550DBK	115	64	55	182-3051				
1550EBK	171	121	55	182-3052				
1550FBK	171	121	105	182-3053				
1550GBK	222	146	55	182-3054				
1550HBK	222	146	105	182-3055				
1550JBK	275	175	66.6	182-3056				
1550KBK	140	102	76.6	182-3057				
1550WL	165	127	76.5	182-9826				
1550WLBK	165	127	76.5	182-9827				
1550LKBK	165	127	76.5	182-9825				
1550MBK	120	100	35.4	182-3058				
1550NBK	250	250	101.3	182-3059				

Mfrs. List No.	Dimensions (mm)			Order Code	Price Each			
	L	W	D		1+	10+	25+	50+
Unpainted - Watertight - IP66								
1550PBK	80	55	25	182-3060				
Black - Watertight - IP66								
1550QBK	60	55	30	182-3062				

Light Duty, Watertight, Diecast Enclosures



1550W Series - IP66



- Rugged, diecast aluminum alloy enclosure
- Unpainted version is vibra finished for a smooth surface with no sharp edges
- Painted version is painted with tough - satin black polyester powder paint for a lasting finish, even after machining
- Lap joint construction with a self-adhesive, EVA foam gasket for the lid provides protection against access of dust and water

- Designed to meet IP66 (with properly installed gasket and lid screws torqued at 55 cN.m)
- Low side wall draft angle for easy P.C. board mounting

609514

Mfrs. List No.	Dimensions (mm)			Order Code	Price Each			
	L	W	D		1+	10+	25+	50+
Unpainted								
1550WA	89	35	30	182-3063				
1550WB	115	64	30	182-3064				
1550WC	115	90	55	182-3065				
1550WD	115	64	55	182-3066				
1550WE	171	121	55	182-3067				
1550WF	171	121	105	182-3068				
1550WG	222	146	55	182-3069				
1550WH	222	146	105	182-3070				
1550WJ	275	175	66.6	182-3071				
1550WK	140	102	76.6	182-3072				
1550WM	120	100	35.4	182-3074				
1550WN	250	250	101.3	182-3075				
1550WP	80	55	25	182-3076				
1550WQ	60	55	30	182-3077				

Mfrs. List No.	Dimensions (mm)			Order Code	Price Each			
	L	W	D		1+	10+	25+	50+
Black								
1550WABK	89	35	30	182-3078				
1550WBBK	115	64	30	182-3079				
1550WCBK	115	90	55	182-3080				
1550WDBK	115	64	55	182-3081				
1550WEBK	171	121	55	182-3082				
1550WFBK	171	121	105	182-3083				
1550WGBK	222	146	55	182-3084				
1550WHBK	222	146	105	182-3086				
1550WJBK	275	175	66.6	182-3087				

Mfrs. List No.	Dimensions (mm)			Order Code	Price Each			
	L	W	D		1+	10+	25+	50+
Black								
1550WKBK	140	102	76.6	182-3088				
1550WMBK	120	100	35.4	182-3089				
1550WNBK	250	250	101.3	182-3090				
1550WPBK	80	55	25	182-3091				
1550WQBK	60	55	30	182-3092				

Thick Wall, Watertight, Diecast Enclosures



1550Z Series - IP66



- Rugged, diecast aluminum alloy enclosure
- Two piece "tongue & groove" construction for protection against access of dust and water
- Ideal for repetitive opening and closing
- Easy to wall mount using "through box - blind hole" construction (on all sizes except 1550Z102 & 1550Z120)
- Access to blind holes is outside of gasket ring for superior protection
- Unpainted version is vibra finished for a smooth surface with no sharp edges
- Painted version is painted with tough polyester powder paint for a lasting finish, even after machining
- Lid secured with either two, four or six (count varies with size) stainless steel, Philips head, counter sunk, machine screws
- Lid screws are outside the gasket protection area to eliminate the need for "O" rings on the screws
- Designed to meet IP66
- Gasket is pre-formed, one-piece - silicone rubber

609515

Mfrs. List No.	Dimensions (mm)			Order Code	Price Each			
	L	W	D		1+	10+	25+	50+
Unpainted								
1550Z101	50.2	45.2	30.4	182-3093				
1550Z102	90.2	36.2	30.4	182-3094				
1550Z103	98.4	64.4	34.4	182-3095				
1550Z104	64.4	58.4	35.4	182-3096				
1550Z106	115.4	65.4	30.4	182-3098				
1550Z107	125.4	80.4	40.8	182-3099				
1550Z108	125.4	80.4	58.8	182-3100				
1550Z109	150.2	64.2	36.4	182-3101				
1550Z111	115.4	65.4	55.4	182-3102				
1550Z113	115.4	90.4	55.4	182-3104				
1550Z115	148.4	108.4	75.4	182-3105				
1550Z116	160.4	100.4	60.2	182-3106				
1550Z117	160.4	100.4	81.2	182-3107				
1550Z120	171.2	121.2	55.4	182-3108				
1550Z124	222.5	146.5	55	182-3109				
1550Z137	120.8	120.8	101.7	182-3110				
1550Z139	159.4	159.4	102	182-3111				
1550Z220	222.5	146.5	82.5	182-3112				

Mfrs. List No.	Dimensions (mm)			Order Code	Price Each			
	L	W	D		1+	10+	25+	50+
Black								
1550Z101BK	50.2	45.2	30.4	182-3113				
1550Z102BK	90.2	36.2	30.4	182-3114				
1550Z103BK	98.4	64.4	34.4	182-3116				
1550Z104BK	64.4	58.4	35.4	182-3117				
1550Z106BK	115.4	65.4	30.4	182-3118				
1550Z107BK	125.4	80.4	40.8	182-3119				
1550Z108BK	125.4	80.4	58.8	182-3120				
1550Z109BK	150.2	64.2	36.4	182-3121				
1550Z111BK	115.4	65.4	55.4	182-3122				
1550Z113BK	115.4	90.4	55.4	182-3123				
1550Z115BK	148.4	108.4	75.4	182-3124				
1550Z116BK	160.4	100.4	60.2	182-3125				
1550Z117BK	160.4	100.4	81.2	182-3126				
1550Z120BK	171.2	121.2	55.4	182-3128				
1550Z124BK	222.5	146.5	55	182-3129				
1550Z137BK	120.8	120.8	101.7	182-3130				
1550Z139BK	159.4	159.4	102	182-3131				
1550Z220BK	222.5	146.5	82.5	182-3132				

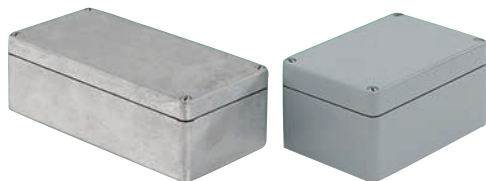
TROUBLESHOOTING TIPS

Chat online to one of our technical engineers at farnell.com

Project & General Purpose Enclosures - continued

Heavy-Duty, Watertight

IP65 Sealed



- Rugged, thick wall, diecast aluminium alloy
- Easy wall mounting using through box-blind holes
- Gasket mounts in cast lid groove, compressed by box tongue
- Painted version is grey (RAL 7001)
- Includes all stainless steel captive hardware
- Internal earthing screws are copper plated
- Models 1590Z100, 119, 120, 150, 160, 162, 166 & 231 include an internal mounting shelf

Mfrs. List No.	L	W	D	Mfrs. List No.	L	W	D
Unpainted							
1590Z061	64	58	36	1590Z100GY	76	80	52
1590Z062	98	64	36	1590Z110GY	76	80	52
1590Z063	150	64	36	1590Z119GY	122	120	80
1590Z100	76	80	52	1590Z120GY	125	80	60.5
1590Z110	76	80	52	1590Z130GY	176	80	54
1590Z119	122	120	80	1590Z135GY	176	80	62
1590Z120	125	80	60.5	1590Z150GY	221	121	80
1590Z130	176	80	54	1590Z160GY	160	160	90
1590Z135	176	80	62	1590Z162GY	260	159	90
1590Z150	221	121	80	1590Z166GY	360	160	90
1590Z160	160	160	90	1590Z231GY	200	230	112
1590Z162	260	159	90	Black			
1590Z166	360	160	90	1590Z061BK	64	58	36
1590Z231	200	230	112	1590Z100BK	76	80	52
Painted							
1590Z060GY	50	45	30	1590Z120BK	125	80	60.5
1590Z061GY	64	58	36	1590Z130BK	176	80	54
1590Z062GY	98	64	36	1590Z150BK	221	121	80
				1590Z162BK	260	159	90
				1590Z231BK	200	230	112

Mfrs. List No.	Order Code	1+	10+	100+	250+	500+
Unpainted						
1590Z061	353-5940					
1590Z062	353-5952					
1590Z063	353-5964					
1590Z100	353-5976					
1590Z110	353-5988					
1590Z119	353-5990					
1590Z120	353-6002					
1590Z130	353-6014					
1590Z135	353-6026					
1590Z150	353-6038					
1590Z160	353-6040					
1590Z162	353-6051					
1590Z166	762-6169					
1590Z231	353-6063					
Painted						
1590Z060GY	353-6075					
1590Z061GY	353-6087					
1590Z062GY	353-6099					
1590Z100GY	353-6117					
1590Z110GY	353-6129					
1590Z119GY	353-6130					
1590Z120GY	353-6142					
1590Z130GY	353-6154					
1590Z135GY	353-6166					
1590Z150GY	353-6178					
1590Z160GY	353-6180					
1590Z162GY	353-6191					
1590Z166GY	762-6177					
1590Z231GY	353-6208					
Black						
1590Z061BK	762-6193					
1590Z100BK	762-6223					
1590Z120BK	762-6258					
1590Z130BK	762-6266					
1590Z150BK	762-6282					
1590Z162BK	762-6304					
1590Z231BK	762-6312					

Electrical Enclosures

polyDOOR

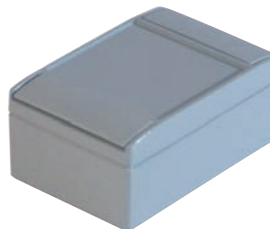


- Watertight enclosures, in glassfibre re-reinforced polyester
- Hinged lid section for easy access
- Ideal for mounting all types of electrical and electronic equipment
- With or without transparent window
- Corrosion proof stainless steel inserts
- Internal screw bosses for mounting plates, PCB supports, Din-Rails etc

Colour Material	Grey Polyester	IP Rating	66	Operating Temperature	-30°C to 100°C
Dimensions (mm)					
H	W	D	Mfrs. List No.	Order Code	Price Each (1+, 10+, 25+, 50+)
Case without Window					
100	120	140	130.120.000	187-7953	
100	160	180	130.160.000	187-7954	
100	160	340	130.164.000	187-7955	
120	200	220	130.200.000	187-7956	
120	200	320	130.202.000	187-7957	
Case with Window					
100	120	140	131.120.000	187-7958	
100	160	180	131.160.000	187-7959	
120	200	220	131.200.000	187-7960	

Electrical Enclosures

aluCASE



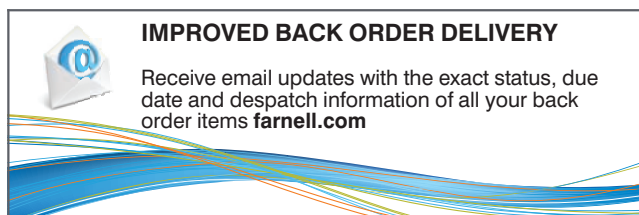
- Modern aluminium enclosures for industrial electronics equipment
- High quality diecastings
- Go anywhere: wall, bulkhead, machine etc.
- Intergated recess for membrane keypads
- Clip-on lid cover trims hide the case fixing screws (ABS or anodised aluminium)
- Enclosure can be installed after closing
- Hinged lid versions with no visible fixing screws

- Internal screw pillars for mounting PCBs and assemblies

Colour Material	Grey Aluminium	IP Rating	67	Operating Temperature	-40°C to 120°C
Dimensions (mm)					
H	W	D	Mfrs. List No.	Order Code	Price Each (1+, 5+, 10+, 25+)
With Plastic Lid Trims					
33	50	75	191.052.000	NEW 187-7961	
33	50	100	191.054.000	NEW 187-7962	
50	70	100	191.070.000	NEW 187-7964	
50	70	140	191.072.000	NEW 187-7965	
50	70	180	191.074.000	NEW 187-7966	
60	90	120	191.090.000	537-1338	
60	90	160	191.092.000	537-1340	
60	90	250	191.094.000	NEW 187-7967	
60	110	200	190.112.000	537-1363	
70	130	160	190.130.000	537-1375	
70	130	220	190.132.000	537-1387	
90	150	180	191.150.000	537-1405	
60	150	260	190.152.000	537-1417	
90	170	280	191.172.000	537-1466	
With Anodised Lid Trims					
120	200	230	191.200.100	NEW 187-7968	
120	200	330	191.202.100	NEW 187-7969	
With Transparent Lid					
60	90	160	192.092.000	NEW 187-7970	
60	110	140	192.110.000	NEW 187-7971	

IMPROVED BACK ORDER DELIVERY

Receive email updates with the exact status, due date and despatch information of all your back order items farnell.com



Multipurpose, RFI/EMI Shielded

Diecast (Nylon Coated)



- Aluminium diecast boxes to **LM24**. Coated in grey (RAL 7001) nylon
- Screw size M3, 5 x 9mm
- Nylon gives good protection and attractive finish.
- Operating temperature -40°C to +110°C

A range of diecast boxes available in various sizes, manufactured in a robust aluminium alloy. These lightweight enclosures provide excellent screening against EMI/RFI and are therefore ideal housing for electronic components and circuits.

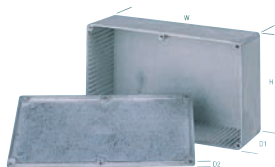
The close fitting lid is secured using countersunk screws.

Mfrs. List No.	Order Code	W	D	H	Mfrs. List No.	Order Code	W	D	H
462-0010A	278-981	34.9	88.9	29.5	462-0030A	279-018	64.5	114.3	54.9
462-0020A	278-993	63.5	114.3	29.5	462-0050A	279-020	120.6	171.5	54.9
462-0040A	279-006	64.5	114.3	54.9					

218869

Order Code	1+	10+	25+	50+
278-981				
278-993				
279-018				
279-006				
279-020				

Multipurpose '5000 Series'



- Ideal for production and prototype applications
- Will withstand temperatures of 260°C
- Available unfinished and in black
- PCB slots for 1.5mm thick boards

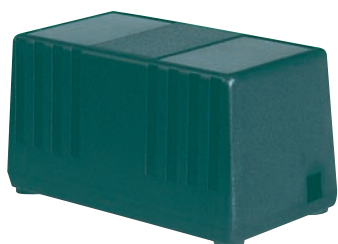
230659

Mfrs. List No.	Dimensions (mm)			Order Code	Price Each			
	H	W	D		1+	50+	100+	500+
Unpainted								
BIM 5001/11	31	50	50	117-1658				
BIM 5002/12	25	50	101	117-1660				
BIM 5003/13	31	62	112	117-1663				
BIM 5004/14	40	66	120	117-1666				
BIM 5005/15	50	82	152	117-1668				
BIM 5006/16	60.5	111.6	191.6	117-1671				
BIM 5007/17	61	95	121	117-1673				
Black								
BIM 5001/11 BLK	31	50	50	117-1659				
BIM 5002/12 BLK	25	50	101	117-1661				
BIM 5003/13 BLK	31	62	112	117-1664				
BIM 5004/14 BLK	40	66	120	117-1667				
BIM 5005/15 BLK	50	82	152	117-1669				
BIM 5006/16 BLK	61	112	191	117-1672				
BIM 5007/17 BLK	61	95	121	117-1674				
Accessories								
Wall Mounting Feet (Set of 4)				117-1675				
BIM 5001/GASKET				137-3721				
BIM 5003/GASKET				137-3723				
BIM 5004/GASKET				137-3724				
BIM 5005/GASKET				137-3725				

Power Supply Cases

In-Line Power Supply Case

ABS (STD and Flame Retardant)



H=62, W₁=112, W₂=117, D=63

- Attractive rugged appearance, moulded in black ABS
- Top and base held together by self-tapping screws
- Recessed holes designed to accept standard 9mm self adhesive feet
- Available in flame retardant ABS to **UL94V-0**

Mfrs List No. PS2 = 531-844, PS2FR = 645-771

224437

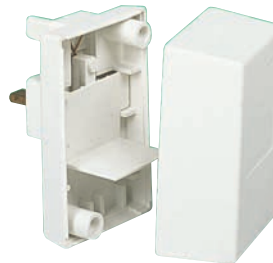
Type	Order Code	Price Each			
		1+	50+	100+	500+
Standard	531-844				
Flame Retardant	645-771				

13 Amp Plug Style

ABS



External dimensions assembled
H = 79 W = 53 D = 50 (not inc pins)



- Moulded in black or white ABS with plastic or brass earth pins
- Removable internal moulding supports 6VA transformer and separates live and neutral solder spills
- Features knockout for multiposition switch, provision made for cable outlet
- Standard version tested to **UL94-HB**, flame retardant version tested to **UL94V-0**

Mfrs. List No.: PS5 = 301-681

PS5WMEP = 531-935

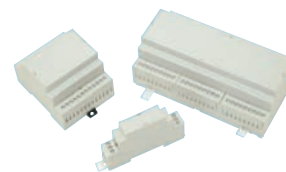
Warning: This unit should not be used with mains voltage until fully assembled.

224438

Colour	Type	Order Code	Price Each			
			1+	25+	100+	500+
Plastic Earth Pin						
Black	Standard	301-681				
Brass Earth Pin						
White	Standard	531-935				

Plug In & DIN-Rail Mount

DIN Rail Module Boxes



- Snap-fit kit for easy assembly
- Boxes fit 35mm DIN rail or direct surface mount
- Self customised perforated terminal covers as standard
- Snap fit terminal covers for IP20 finger protection
- Can carry up to 3 PCBs horizontally and 2/4 vertically
- Grey, transparent red or clear snap-in covers
- Front panel ideal for screen printing logos etc.
- Moulded in grey UL94-V0 flame retardant PC
- Enclosed base eliminates any need for additional insulation

Mfrs. List No.	Box Size	Poles	Order Code	Dimensions (mm)			
				Width	Depth	Height	
CNMB/1-	1			17.5	58	90	
CNMB/2-	2			36	58	90	
CNMB/3-	3			53	58	90	
CNMB/4-	4			71	58	90	
CNMB/5-	5			88	58	90	
CNMB/6-	6			106	58	90	
CNMB/9-	9			160	58	90	
CNMB/12-	12			210	58	90	

Kit Contents: Base, Top Panel, Clips for rail or wall mounting, 2 perforated terminals. (6 and 9 kits are supplied with additional blank term guards).

551111.600711

Mfrs. List No.	Box Size / Poles	Order Code	Price Each			
			1+	10+	25+	50+
Standard DIN Rail Kit						
CNMB/1/KIT	1	177-4462				
CNMB/2/KIT	2	177-4464				
CNMB/3/KIT	3	177-4465				
CNMB/4/KIT	4	177-4466				
CNMB/5/KIT	5	177-4467				
CNMB/6/KIT	6	177-4468				
CNMB/9/KIT	9	177-4469				
CNMB/12/KIT	12	177-4470				

- 8 pin and 11 pin plug-in module
- Optional polycarbonate cover available

Contact Rating 3A (mated)
 Operating Temperature 100°C
 Contact Resistance <3mΩ



8 Pin & Cover

External dimensions
 H=50
 W=50
 D=79/44

218859

Mfrs.	List No.	Order Code	1+	25+	50+	100+
8 Pin	01BBN08	301-760				
11 Pin	01BBN11	301-772				
76mm Cover	01CBP76	301-784				
41mm Cover	01CBP41	444-6562				

DIN Rail Module Boxes - continued

Mfrs.	List No.	Box Size / Poles	Order Code	1+	10+	25+	50+	100+
Vented DIN Rail Kit								
CNMB/1V/KIT	1		177-4471	●				
CNMB/2V/KIT	2		177-4472	●				
CNMB/3V/KIT	3		177-4473	●				
CNMB/4V/KIT	4		177-4474	●				
CNMB/5V/KIT	5		177-4476	●				
CNMB/6V/KIT	6		177-4477	●				
CNMB/9V/KIT	9		177-4478	●				
CNMB/12V/KIT	12		177-4479	●				
Standard DIN Rail Box								
CNMB/1/2	1		177-4482	●				
CNMB/2/2	2		177-4483	●				
CNMB/3/2	3		177-4484	●				
CNMB/4/2	4		177-4485	●				
CNMB/5/2	5		177-4486	●				
CNMB/6/2	6		177-4488	●				
CNMB/9/2	9		177-4489	●				
CNMB/12/2	12		177-4490	●				
Solid Top DIN Rail Box								
CNMB/1ST/2	1		177-4491	●				
CNMB/2ST/2	2		177-4492	●				
CNMB/3ST/2	3		177-4493	●				
CNMB/4ST/2	4		177-4494	●				
CNMB/6ST/2	6		177-4495	●				
CNMB/9ST/2	9		177-4496	●				
Vented DIN Rail Box								
CNMB/4V/2	4		177-4501	●				
CNMB/6V/2	6		177-4502	●				
CNMB/9V/2	9		177-4503	●				
Extended Wall DIN Rail Box								
CNMB/1W/2	1		177-4506	●				
CNMB/2W/2	2		177-4507	●				
CNMB/3W/2	3		177-4508	●				
CNMB/4W/2	4		177-4509	●				
CNMB/6W/2	6		177-4510	●				
CNMB/9W/2	9		177-4511	●				
Solid Terminal Guard								
CNMB/1/TGS			177-4512	●				
CNMB/2/TGS			177-4513	●				
CNMB/3/TGS			177-4514	●				
CNMB/4/TGS			177-4515	●				
For 6, 9 & 12 size module use CNMB/3TGS								
Pre-drilled Terminal Guard								
CNMB/1/TG508	3		177-4518	●				
CNMB/2/TG508	6		177-4519	●				
CNMB/3/TG508	9		177-4520	●				
CNMB/4/TG508	12		177-4521	●				
For 6, 9 & 12 size module use CNMB/3/TG508								
Perforated Terminal Guard								
CNMB/2/TG508P	6		180-0775	●				
CNMB/3/TG508P	9		180-0776	●				
For 6, 9 & 12 size module use CNMB/3/TG508P								
Grey Clip on Cover								
CNMB/2/PG	2		177-4524	●				
CNMB/3/PG	3		177-4525	●				
CNMB/4/PG	4		177-4526	●				
CNMB/5/PG	5		177-4527	●				
CNMB/6/PG	6		177-4528	●				
CNMB/9/PG	9		177-4531	●				
CNMB/12/PG	12		177-4532	●				
Clear Clip on Cover								
CNMB/2/PC	2		177-4534	●				
CNMB/3/PC	3		177-4535	●				
CNMB/4/PC	4		177-4536	●				
CNMB/5/PC	5		177-4537	●				
CNMB/6/PC	6		177-4538	●				
CNMB/9/PC	9		177-4539	●				
CNMB/12/PC	12		177-4540	●				

Vertical Box for DIN Rail



A range of two vertical boxes designed for 5mm pitch plug-in terminal blocks. The plates are to cover unused terminal areas and come in either solid or perforated. Each of the three sides of the boxes accept up to twelve ways of terminal blocks.

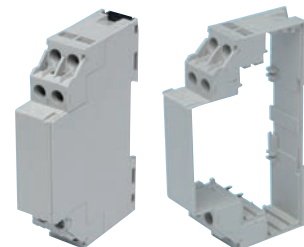
Kit Contents: 12 way closed plate, three 4 way closed plates and three 4 way perforated plates.

CVB225: W=22.5, H=82, D=90mm
 CVB450: W=45.5, H=82, D=90mm

551099.600710

Mfrs.	List No.	Order Code	1+	10+	25+	50+	100+
CVB225/KIT		177-4441	●				
CVB450/KIT		177-4442	●				

Extendable Module Box



- 17.5mm multiples
- Extendable to required length
- Top hat 35mm din rail or surface mounting
- Flame retardant UL 94V0 material
- Max 2 x 2.5mm² solid or stranded
- Terminal protection to IP20
- The main box has a detachable end plate and the extension box is sideless
- Each module, as standard, has 8 screw terminals which are removable as required

551086.600709

Mfrs.	List No.	Description	Order Code	1+	10+	25+	50+	100+
CMEB	17.5mm Module Box		177-4480	●				
CMEB/EExtension			177-4481	●				

DIN Rail Enclosure



Optional PCB



- Universal mounting (TS35 or TS32)
- Available in 4 sizes
- Complete with screw terminals
- Moulded from grey polyamide 6.6

Rated at 10A, 250V
 Max Cable Size 4mm²

229053

Type	H	W	D	Terminal	Order Code	1+	10+	50+
1	63	20	58	4	318-7834			
2	16.5	90.5	58	4	318-7846			
3	22.5	90.5	58	6	318-7858			
4	90.5	28.5	58	8	318-7860			
PCB for type 1					318-7871			
PCB for type 2, 3 & 4					318-7883			

Miniature Housing (DIN Rail)

PC



- Fully insulated polycarbonate
- Flammability tested to **UL94V-1/2**
- Connection between PCB and terminals made by connecting pins (supplied)
- Captive self-locking terminal screws are resistant to loosening through vibration
- Smallest size accepts 2.5mm² wire, remaining sizes accept 4mm² wire



Mfrs. List No.	Dimensions (mm)			Order Code	1+	10+	25+	50+	100+
1105600000	113.6	22.5	119.2	192-5840	●				
1111640000	113.6	45	119.2	192-5841	●				
1111630000	113.6	12	119.2	192-5843	●				

External Dimensions			No. of Terminals	Order Code	Price Each		
H	W	D			1+	25+	50+
98.5	22.5	75	12	118-1523	●		
110	55	75	16	118-1522	●		
110	99.7	75	30	118-1524	●		

218863

Modular Interface Support



- Suitable for either 72mm or 107mm width PCB's
- Modular Construction for easy Assembly
- Snap fit Din Rail mounting fixtures
- Flame retardant green Polyamide 66 UL 94V0 moulding
- Integral marker facility



Mfrs. List No.	Description	Width	Order Code
72mm Series			
CIME/M/BE1125SS	Base Element	11.25mm	177-4443
CIME/M/BE2250SS	Base Element	22.5mm	177-4444
CIME/M/BE4500SS	Base Element	45mm	177-4445
CIME/M/FE0000SS	Foot Element		177-4446
CIME/M/SE1125SS	End Section	11.25mm	177-4447
CIME/M/SE2250SS	End Section	22.5mm	177-4448
CIME/M/SEF1125S	End Section with Foot	11.25mm	177-4449
CIME/M/SEF2250S	End Section with Foot	22.5mm	177-4450
CIME/M/MPF	Flat Wall Plate		177-4452
107mm Series			
CIME/E/BE1850SS	Base Element	18.5mm	177-4454
CIME/E/BEF1850SS	Base Element with Foot	18.5mm	177-4455
CIME/E/BE3500SS	Base Element	35mm	177-4456
CIME/E/BEF3500SS	Base Element with Foot	35mm	177-4457
CIME/E/SE1000S	End Section	11.5mm	177-4458
CIME/E/SEF1000S	End Section with Foot	11.5mm	177-4459
CIME/E/MPF	Flat Wall Plate		177-4460
CIME/E/MPR	Raised Wall Plate		177-4461

551045.600708

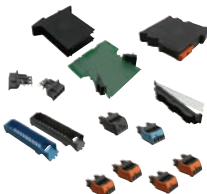
Mfrs. List No.	Order Code	1+	10+	50+	100+	250+
72mm Series						
CIME/M/BE1125SS	177-4443	●				
CIME/M/BE2250SS	177-4444	●				
CIME/M/BE4500SS	177-4445	●				
CIME/M/FE0000SS	177-4446	●				
CIME/M/SE1125SS	177-4447	●				
CIME/M/SE2250SS	177-4448	●				
CIME/M/SEF1125S	177-4449	●				
CIME/M/SEF2250S	177-4450	●				
CIME/M/MPF	177-4452	●				
107mm Series						
CIME/E/BE1850SS	177-4454	●				
CIME/E/BEF1850SS	177-4455	●				
CIME/E/BE3500SS	177-4456	●				
CIME/E/BEF3500SS	177-4457	●				
CIME/E/SE1000S	177-4458	●				
CIME/E/SEF1000S	177-4459	●				
CIME/E/MPF	177-4460	●				
CIME/E/MPR	177-4461	●				

Electronics Housing

OMNIMATE



NEW



This innovative housing system incorporates excellent functionality, reliability, and safety in a user friendly package. The CH20M was designed to maximize the amount of printed circuit board space and offers multiple levels of input/output density. This high level of flexibility makes the CH20M suitable for a variety of applications. In addition, the CH20M was designed for fast, easy processing through all stages of assembly.

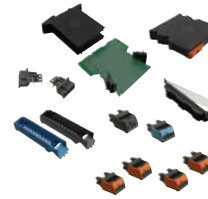
639058

22.5mm Electronics Housing



OMNIMATE

NEW



This innovative housing system incorporates excellent functionality, reliability, and safety in a user friendly package. The CH20M was designed to maximize the amount of printed circuit board space and offers multiple levels of input/output density. This high level of flexibility makes the CH20M suitable for a variety of applications. In addition, the CH20M was designed for fast, easy processing through all stages of assembly.

- Colour coded release levers, multiple labeling options, and the unique 'Autoset' keying eliminate the possibility of mis-mating plug connections.
- Enhanced safety is a standard feature with touch proof connections on both plug and receptacle sides, dual level contacts, and integrated 'Autoset' coding

- The front cover is transparent, to allow easy monitoring of indicator LED's, gauges, etc. without removal and can be locked, to prevent tampering, or removed altogether

639058

Mfrs. List No.	Description	Order Code	1+	10+	25+	50+	100+
2418630000	Black Base, Black Clip-On Foot	192-5814	●				
1104450000	Black Base, Orange Clip-On Foot	192-5815	●				
1073350000	Grey Base, Black Clip-On Foot	192-5816	●				
1080630000	1 Level, Black, 8 Connections	192-5818	●				
1070620000	1 Level, Blue, 8 Connections	192-5819	●				
2418660000	2 Levels, Blue, 16 Connections	192-5820	●				
2418650000	2 Levels, Black, 16 Connections	192-5821	●				
1073370000	2 Levels, Grey, 16 Connections	192-5822	●				
1139790000	3 Levels, Black, 24 Connections	192-5823	●				
2418640000	Black Front	192-5824	●				
1073360000	Grey Front	192-5825	●				
1164680000	Light Grey Front	192-5826	●				
2418670000	Black Transparent Hinged Cover	192-5827	●				
1073420000	Transparent Hinged Cover	192-5828	●				
1912130000	Adhesive Markers (Pk 24)	192-5831	●				
1082540000	Socket Markers (Pk 24)	192-5832	●				
1069640000	4.2mm Left Pin Header	192-5833	●				
1069770000	5.9mm Left Pin Header	192-5834	●				
1069570000	4.2mm Right Pin Header	192-5835	●				
1069710000	5.9mm Right Pin Header	192-5836	●				
1069350000	Black Release Lever	192-5837	●				
1063280000	Orange Release Lever	192-5838	●				
1069380000	Blue Release Lever	192-5839	●				
1105580000	22mm PCB	196-1464	●				

Hand-Held Enclosures

USB Enclosure

Clear Polycarbonate



- Enclosure manufactured from transparent Polycarbonate
- 3 snap together enclosure parts
- Enclosure has recessed area in lid and base
- Connector is SMD 4 Pin Plug
- Insulator colour is white
- Plug is supplied with 2 x 9mm posts

H = 8.7, W = 71, D = 23mm

510156

Mfrs. List No.	Order Code	1+	10+	25+	50+
Enclosure					
MCG1901	160-3603	●			
Connector - USB Type A					
MCKUSBX-SMT2AP1S-W30	SMD 158-4673	●			

TROUBLESHOOTING TIPS

Chat online to one of our technical engineers at farnell.com

Hand-Held Enclosures - continued

Key Fob

ABS



- Moulded in black ABS. Comprises of two parts which snap together
- Lid has view window for LED. Loop provided for key ring or strap
- PCB mounting bosses provided in base
- Terminals provided for MN21 12V battery

H = 45, L = 35, P = 14 (117-1648)
H = 57, L = 36, P = 16 (117-1645/1646/1647)

230624

Version	Button Colours	Mftrs.		Price Each		
		List No.	Order Code	1+	10+	25+
One Large Button	Black	2957-46	117-1648 ●			
One Small Button	Red	2957-22	117-1645 ●			
Two Small Buttons	Red/Blue	2957-23	117-1646 ●			
Three Small Buttons	Red/Blue/Black	2957-43	117-1647 ●			

Ergonomic Key Fob

ABS



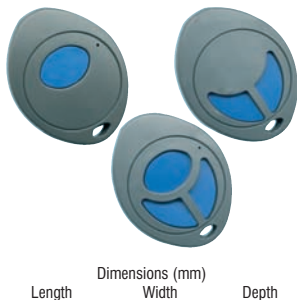
H = 14.71, W = 72.09, D = 51.51mm

- Ideal for wireless remote controls of all types
- Use for applications that require transmitting a signal or series of signal commands
- Material - ABS ; Surface - textured black finish
- Enclosure has snap together design
- PCB mounting captured between standoffs when unit is snapped together
- Small Battery coin cell lithium type (not included)
- 1 to 5 Button options, some can be rotated to optimum angle

446057

No. of Buttons	Mftrs.		Price Each				
	List No.	Order Code	1+	10+	25+	50+	100+
1	2955-20R-1	126-4652 ●					
2	2955-20R-2	126-4654 ●					
3	2955-20R-3	126-4656 ●					
5	2955-20R-5	126-4658 ●					

OVO 3 Cases



- Ergonomic pocket-size enclosures
- Ideal for remote control electronics
- Moulded in ABS (UL 94 HB)
- Supplied with a blue rubberised push-button cover with one, two or three button segments
- Internal supports for fitting a round (∅35mm) PCB
- Tough clip-together assembly
- Suitable for a button type battery cell
- Matt surface finish for a modern feel
- Colour: dark grey RAL 7016

381083

Mftrs.		Price Each			
List No.	Order Code	1+	10+	25+	50+
OV03/1.4	831-2125 ●				
OV03/2.4	831-2133 ●				
OV03/3.4	831-2141 ●				

Miniature, (Pocket clip and battery compartment)



ABS



- ABS moulded cases, with integral PP3 battery compartment and pocket/belt clip
- Four integral locating pegs and sockets will accept 55 x 63mm PCB
- Supplied with clip-in battery terminals suitable for PP3 style battery

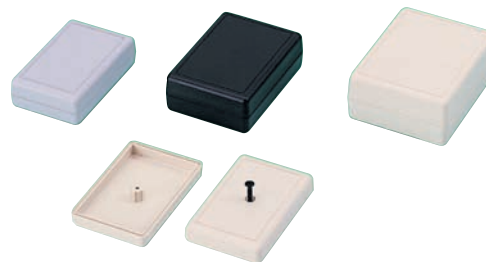
External dimensions : H=23, W=103, D=62

218884

Colour	Order Code	Price Each				
		1+	25+	50+	100+	500+
Black	223-554 ●					
Grey	223-566 ●					
White	645-734 ●					

Miniature Cases - 'C Series'

ABS



- Stylish and versatile miniature ABS cases
- Ideal for personal safety, remote control, medical, and controller type devices
- Available in three colours: black, mid-grey or almond
- Interlocking assembly with central fixing screw

Operating temperature -40°C to +90°C

230627

Mftrs. List No.	External Dimensions			Order Code	Price Each			
	H	W	D		1+	10+	25+	50+
Black								
C-4BK	14.732	34.925	53.975	737-537 ●				
C-6BK	19.126	40.97	57.48	737-562 ●				
C-8BK	23.495	46.99	60.96	737-598 ●				
Grey								
C-4GY	14.732	34.925	53.975	737-549 ●				
C-6GY	19.126	40.97	57.48	737-574 ●				
Almond								
C-4AL	14.732	34.925	53.975	737-550 ●				
C-8AL	23.495	46.99	60.96	737-616 ●				

Hand-Held Enclosures mobilCASE

NEW



- Aluminium handheld enclosures for indoor & outdoor applications
- Enclosures with two-part extrusion which snaps together for easy mounting of PCBs with pre-fitted displays, keypads, switches etc.
- Flat lids are used to close the ends of the case extrusion
- Recessed area in case extrusion for membrane keypads or product labels
- Waterproof and watertight

Colour Material	Black / Silver Aluminium / Zinc			IP Rating	54 Operating Temperature	Price Each			
	H	W	D			1+	10+	25+	50+
	32	118	120	253.080.124	187-7981 ●				
	32	118	160	253.080.164	187-7982 ●				
	32	138	160	253.100.164	187-7983 ●				
	32	138	200	253.100.204	187-7984 ●				
	32	168	180	253.130.184	187-7985 ●				
	32	168	240	253.130.244	187-7986 ●				

626568

'M Series' (Battery Compartment)

ABS



- Very attractive, robust, and versatile ABS pocket/hand-held cases in two colours black and mid-grey
- Supplied with removable end panels, either with or without a strong pocket/belt clip
- Internal mounting pillars for PCBs
- Battery compartments: M-4 takes 1x1.5V AA size and M-6 takes 2x1.5V AA or 1x9V PP3 size cells

230633

Mfrs. List No.	External Dimensions			Order Code	Price Each			
H	W	D		1+	10+	25+	50+	
Without Pocket Clip								
M-6BK	21.6	62	105.4	775-654				
With Pocket Clip								
M-4PCB	17.8	55.9	71.1	775-630				
M-6PCBK	21.6	61	105.4	775-678				

Hand-Held (battery compartment) ABS



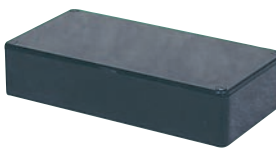
- Hand-held ABS cases for portable/pocket equipment
- Integral battery compartment to house PP3 battery

External Dimensions
H=33, W=118, D=66

230631

Mfrs. List No.	Colour	Order Code	Price Each			
			1+	50+	100+	500+
BC3	Black	301-700				

Hand-Held ABS (Impact Resistant)



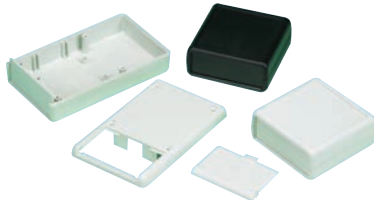
- Moulded in high impact ABS. Accepts PCB size 75mm x 53mm approx.
- Designed to house 1 x PP3 battery

External Dimensions
H=22, W=111, D=57

218876

Mfrs. List No.	Colour	Order Code	Price Each			
			1+	50+	100+	500+
T4	Black	301-474				
T4W	White	301-486				

Panel - '1593 Series' (Optional End Panel & Battery Compartment) ABS



- Ergonomically designed cases for hand-held or stand alone use
- Units with one panel include a battery compartment for 1xPP3 or 2xAA batteries (except 21mm high versions)
- Recess area on lid is provided for membrane keypads
- End panels are replaceable for easy machining and for infra red
- Exposed panel area is 57x21
- New card reader size now available

External Dimensions			Mfrs. List No.	Order Code
H	W	D		
66	66	28	1593KGY	930-179
66	66	28	1593KBK	930-180
92	66	28	1593LGY	443-7846
92	66	28	1593LBK	443-7858
140	66	28	1593XGY	353-6324
140	66	28	1593XBK	353-6336
92	66	21	1593SBK	353-6350
92	66	28	1593PGY	930-192
92	66	28	1593PBK	930-209
112	66	28	1593QGY	930-210
112	66	28	1593QBK	930-222
140	66	28	1593YGY	353-6385
140	66	28	1593YBK	353-6397
66	66	28	1593JBK	353-6312
110	75	25	1593NGY	928-7574
110	75	25	1593NBK	928-7566

219608

Order Code	Price Each			
	1+	10+	25+	50+
Panel Both Ends				
930-179				
930-180				
443-7846				
443-7858				
353-6324				
353-6336				

Order Code	Price Each			
	1+	10+	25+	50+
Panel One End				
353-6350				
930-192				
930-209				
930-210				
930-222				
353-6385				
353-6397				
928-7574				
928-7566				

Order Code	Price Each			
	1+	10+	25+	50+
Closed Both Ends				
353-6312				

		Price Per Pack			
		1+			
Infrared Panels					
10 Pack	930-234				

		Price Each			
		1+			
Accessories					
Black Belt Clip	353-6282				
Grey Belt Clip	353-6294				

ABS Hand Held Enclosure Battery Door



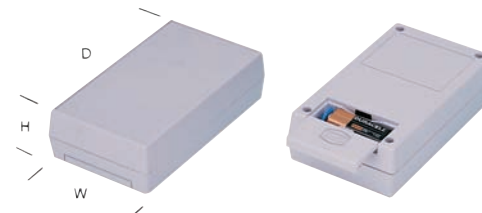
- Electronic hand held enclosures, ideally suited for mounting printed circuit boards.
- Lap joint construction provides protection against dust accumulation and splashing water.
- Flammability rating of UL94 HB).
- The top half includes a smooth recessed area for membrane, label or silkscreen.
- Assembled with M3 Philips self tapping screws.

- Both top and bottom halves contain molded in PCB standoffs

523254

Dimensions (mm)		Mfrs. List No.	Price Each				
H	W	D		1+	10+	25+	50+
Ungasketed							
130	68	25	MCRH3015	163-5123			
160	85	30	MCRH3055	163-5124			

Recessed (Battery Compartment) ABS



- Attractive, robust and versatile ABS cases in mid-grey
- Top panel includes a recess for mounting membrane keypads or product labels
- Includes internal mounting pillars in the top and base for PCBs and assemblies
- All cases include a battery compartment for one 9V PP3 size cell

Operating temperature -40°C to +90°C

External Dimensions			Recess Area	Mfrs. List No.	Order Code
H	W	D			
38.35	66.04	104.14	56x94.2	211-IGY	775-794
38.4	82.6	111.5	73.4x102	231-IGY	775-800
38.4	82.6	143.1	73.4x133.8	251-IGY	775-812

230636

		Price Each			
		1+			
Order Code					
775-794					
775-800					
775-812					

INTELLIGENT ONLINE BUYING SYSTEM PROVIDING

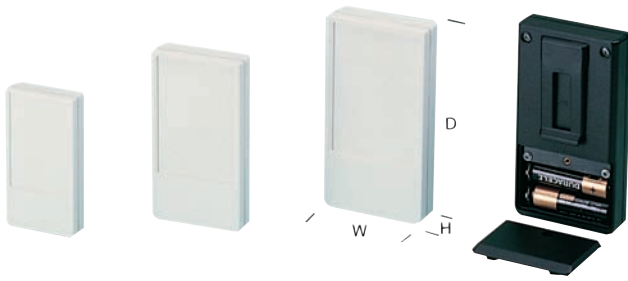
iBuy

Complete cost control, reduced administration time, visibility of your spend, flexibility and personalised to your company's needs.

farnell.com/ibuy

'Datec' (Battery Compartment)

ABS



- Stylish, robust and ergonomic ABS cases with top recess for membrane key pads
- Ideal for remote controls, and all types of hand held instruments
- Battery compartments: L takes 2xAA or 1xPP3 and S takes 2xN cells.
- Internal mounting pillars in the top and base for PCBs

Operating temperature -40°C to +90°C

	External Dimensions			Recess Area	Mfrs. List No.	Order Code
	H	W	D			
L off-white	22	65	119.99	55x80	A9072107	774-649
L black	22	65	119.99	55x80	A9072109	774-650
S off-white	16	46	84.99	40x58	A9070107	774-686
Battery clips set for 2xAA, AAA or N cells					A9190002	774-728

219605

	Order Code	Price Each			
		1+	10+	25+	50+
Size L Case					
Off-White	774-649				
Black	774-650				
Size S Case					
Off-White	774-686				
Accessories					
Battery Clips	774-728				

1599 Series

ABS



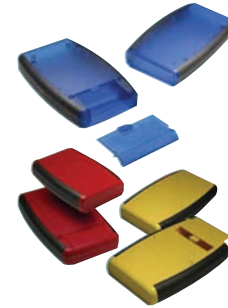
- Attractively styled and ergonomically designed cases
- Battery compartments accept 1 x PP3 or 2 x AA batteries
- Provided with recess area for membrane key pads
- Two piece lap joint construction to protect against dust and splashing of water
- Base secured with 4 self-tapping screws

203443

Mfrs. List No.	Dimensions extérieures H x W x D (mm)	Order Code	Price Each			
			1+	10+	25+	50+
Grey - Without battery door						
1599BSGY	130 x 65 x 25	142-6562				
1599ESGY	170 x 85 x 34	142-6563				
1599KSGY	220 x 140 x 40.5	142-6565				
1599HSGY	220 x 110 x 44	142-6566				
Grey - With battery door						
1599BSGYBAT	130 x 65 x 25	142-6567				
1599ESGYBAT	170 x 85 x 34	142-6568				
1599HSGYBAT	220 x 110 x 44	142-6569				
Belt Clip						
1599CLIPGY		353-6294				

IMPROVED BACK ORDER DELIVERY

Receive email updates with the exact status, due date and despatch information of all your back order items farnell.com



- Ergonomically designed for hand-held comfort
- Choice of two versions (with or without battery door & compartment) - in two sizes
- Over molded in general purpose ABS plastic with a soft plastic grip
- Top cover is recessed for membrane display or keypad
- P.C. board standoffs are molded into case
- Includes removable front panel (for easy modifications) and assembly hardware
- Battery door & compartment version includes 4 battery clips (for 2 - AA batteries) and a 9 volt (PP3) battery clip

622005

Dimensions (mm)				Mfrs. List No.	Order Code	Price Each		
H	W	D				1+	10+	25+
Without Battery Compartment - Grey Grip								
Black Body								
100	61	17	1553ABK		NEW 182-9823			
117	79	24	1553BBK		100-9437			
147	89	24	1553DBK		100-9439			
Grey Body								
100	61	17	1553AGY		NEW 182-9822			
117	79	24	1553BGY		100-9438			
147	89	24	1553DGY		100-9440			
With Battery Compartment								
Black Body								
117	79	24	1553BBKBAT		100-9441			
147	89	24	1553DBKBAT		100-9443			
Grey Body								
117	79	24	1553BGYBAT		100-9442			
147	89	24	1553DGYBAT		100-9444			
Without Battery Compartment - Black Grip								
Black Body								
117	79	24	1553BBKBK		151-1156			
147	89	25	1553DBKBK		151-1160			
Translucent Blue Body								
117	79	24	1553BTBUBK		151-1157			
Yellow Body								
117	79	24	1553BYLBK		151-1159			
With Battery Compartment - Black Grip								
Black Body								
117	79	24	1553BBKBKBAT		151-1164			
Translucent Blue Body								
117	79	24	1553BTBUBKBAT		151-1165			
Yellow Body								
117	79	24	1553BYLBKBAT		151-1168			

'1599 Series'

IP54, ABS (Flame Retardant)



- Attractively styled hand-held cases, sealed to IP54
- Flame retardant ABS construction. Flameability rating **UL94V-0**
- Extra deep lid and ultra shallow base allows user flexibility
- Recessed lid panel is ideal for membrane keypads

- Two keyhole knockouts are moulded in base to facilitate wall mounting installation
- PCB guide slots and bosses are moulded in lid and base
- Base secured with 4 machine screws into brass bushings

621985

Dimensions (mm)				Mfrs. List No.	Order Code	Price Each			
H	W	D				1+	10+	25+	50+
Black Without Battery Door									
130	65	25	1599BBK		722-947				
170	85	34	1599EBK		722-960				
220	140	40.5	1599KBK		384-2605				
220	110	44	1599HBK		722-984				
Black With Battery Door									
130	65	25	1599HBK		353-6245				
170	85	34	1599EBKBAT		353-6257				
220	140	40.5	1599KBKBAT		384-2691				
Grey Without Battery Door									
130	65	25	1599BGY		722-959				
170	85	34	1599EGY		722-972				
220	140	40.5	1599KGY		384-2617				
220	110	44	1599HGY		722-996				

Dimensions (mm)			Mfrs.	Price Each				
H	W	D	List No.	Order Code	1+	10+	25+	50+
Grey With Battery Door								
130	65	25	1599BGYBAT	353-6269				
170	85	34	1599EGYBAT	353-6270				
Belt Clip								
Black			1599CLIP	353-6282				
Grey			1599CLIPGY	353-6294				

Conductive Plastic Hand Held Enclosure



- Moulded from a compound of stainless steel fibers and flame retardant ABS plastic (material carries a UL flammability rating of 94V-0)
- Recessed top for membrane display or keypad
- Designed to meet **IP54**
- Lid is secured with Philips machine screws, threaded into tapped integral brass bushings
- Perfect for applications with repetitive assembly and disassembly are required

- Two keyhole knockouts are moulded into the inside of the base to facilitate wall mounting installation

Length	Width	Depth	Mfrs. List No.	Order Code
34	85	34	1599RFIEBK	100-9481
44	110	44	1599RFIHBK	100-9483

415762

Mfrs.	Price Each				
List No.	Order Code	1+	10+	25+	50+
1599RFIEBK	100-9481				
1599RFIHBK	100-9483				

Hand-Held Enclosures

33 Series



- Advanced snap-fit handheld enclosures - IP65 without screws
- The intelligent concept permits rapid installation by utilising the four rubberised corners for a snap-fit assembly. (Corners sold separately)
- Added security will be achieved by applying the optional retaining screws
- Internal screw pillars are moulded into cover and base for PCBs assembly (self-tapping screws)
- The EPDM gasket (available optionally) upgrades the standard IP62 protection class to IP65
- Enclosure moulded in high impact ABS (3mm wall

thickness)

- Side elements made from Polypropylene coated with TPE
- Lid & Base: ABS
- Rubber Corners: TPE

631254

Mfrs.	Dimensions (mm)			Price Each				
List No.	H	W	D	Order Code	1+	10+	25+	50+
33133301	25	95	145	189-4752				
33133302	35	95	145	189-4753				
33133303	25	110	185	189-4755				
33133304	35	110	185	189-4756				
33133305	25	120	200	189-4757				
33133306	35	120	200	189-4758				
33133311	25	95	145	189-4759				
33133312	35	95	145	189-4760				
33133313	25	110	185	189-4761				
33133314	35	110	185	189-4762				
33133315	25	120	200	189-4763				
33133316	35	120	200	189-4764				

25mm Rubber Corners

33133225	Blue	189-4765					
33133325	Green	189-4768					
33133425	Red	189-4770					
33133525	Orange	189-4772					
33133625	Black	189-4774					
33133725	Yellow	189-4776					
33133825	Grey	189-4779					

35mm Rubber Corners

33133235	Blue	189-4767					
33133335	Green	189-4769					
33133435	Red	189-4771					
33133535	Orange	189-4773					
33133635	Black	189-4775					
33133735	Yellow	189-4777					
33133835	Grey	189-4781					

Accessories

33133402	Sealing Gasket	189-4782					
----------	----------------	----------	--	--	--	--	--

Hand-Held Cases

45 Series



NEW

CAMDENBOSS
ELECTRONICS & ENCLOSURES

- Moulded in UL94 5VA Flame Retardant ABS
- Case secured by four self-tapping screws
- Removable end panel for ease of access & machining
- ABS end panel version as standard, infra-red end panel to order
- Battery compartment for AA or 9V PP3 batteries
- Battery contacts / strap included

- Plain / no battery compartment version available to order
- Textured lid versions for consistent all over surface finish
- Smooth recess lid version for membrane keypads or overlays
- PCB pillars moulded in lid and base
- Recess in base for product labels
- Rubber Silicone Boots include belt strap mount

Contents: Cover, Base, Battery Contacts & x4 fixing screws.

631257

Mfrs.	Dimensions (mm)				Price Each				
List No.	H	W	D	Size	Order Code	1+	10+	25+	50+

Textured Front - 2 x AA Battery Compartment

CHH451ABK	25.5	72.5	117.5	1	189-4783				
CHH452ABK	26	82.5	165	2	189-4785				
CHH453ABK	26	82.5	139.5	3	189-4787				

Textured Front - PP3 Battery Compartment

CHH451PBK	26	82.5	139.5	1	189-4784				
CHH452PBK	25.5	72.5	117.5	2	189-4786				
CHH453PBK	26	82.5	165	3	189-4788				

Recessed Front - 2 x AA Battery Compartment

CHH456ABK	25.5	72.5	117.5	1	189-4789				
CHH457ABK	26	82.5	165	2	189-4792				
CHH458ABK	26	82.5	139.5	3	189-4794				

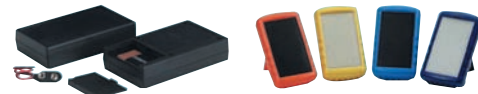
Recessed Front - PP3 Battery Compartment

CHH456PBK	25.5	3.25	117.5	1	189-4790				
CHH457PBK	26	82.5	139.5	2	189-4793				
CHH458PBK	26	82.5	165	3	189-4795				

Rubber Boots

CHH451BBK	Black	1	189-4796				
CHH451BBL	Blue	1	189-4797				
CHH451BRD	Red	1	189-4798				
CHH452BBK	Black	2	189-4799				
CHH452BBL	Blue	2	189-4800				
CHH452BRD	Red	2	189-4801				
CHH453BBK	Black	3	189-4802				
CHH453BBL	Blue	3	189-4803				
CHH453BRD	Red	3	189-4804				

40 Series Hand Held Case



- ABS enclosures with 2AA, PP3 and no battery compartment
- Available in recessed or flush top finishes
- Tapered recessed area suits membrane and flush mount applications
- Internal mounting pillars for PCB's
- Innovative protective boot adds style and functionality
- Provides durability and protects against product damage
- Integrated tilt bar creates optimal viewing angle and keypad accessibility

Colour	Recessed Area (85x49.5)		Flush Top	
	Bone	Black	Bone	Black
Dimensions	25.4x60.96x96.52	25.4x60.96x96.52	25.4x60.96x96.52	25.4x60.96x96.52
Battery Options				
No Battery Compartment	495-3630	495-3654		495-3691
PP3 Battery Compartment	495-3642	495-3666	495-3680	495-3708

337835

Mfrs.	Price Each			
List No.	Order Code	1+	10+	25+

40 Series Cases

40-12-NO-R-BO	Bone	495-3630			
40-12-9V-R-BO	Bone	495-3642			
40-12-NO-R-BL	Black	495-3654			
40-12-9V-R-BL	Black	495-3666			
40-12-9V-F-BO	Bone	495-3680			
40-12-NO-F-BL	Black	495-3691			
40-12-9V-F-BL	Black	495-3708			

40 Series Hand Held Case - continued

Mfrs.	List No.	Order Code	1+	10+	25+	Price Each
Protective Boot for 40 Series						
40-RBT-LBL	Light Blue	495-3710				
40-RBT-DBL	Dark Blue	495-3721				
40-RBT-ORG	Orange	495-3733				
40-RBT-YEL	Yellow	495-3745				
40-RBT-RED	Red	495-3757				
40-RBT-BL	Black	495-3769				
Accessories						
40 Series						
Belt Clip, Black		495-3770				
Belt Clip, Bone		495-3782				

55 Series Hand Held Case



- ABS enclosures with 2AA, 4AA, PP3, access compartment and no battery
 - Tapered recessed area suits membrane and flush mount applications
 - Internal mounting pillars for PCB's
 - Innovative protective boot adds style and functionality
 - Provides durability and protects against product damage
 - Integrated tilt bar creates optimal viewing angle and keypad accessibility
- Protective Boot with Integrated Tilt Bar**
- | | | | |
|-----------|---------------------|--------|----------|
| Colour | Fits 55 Series Case | Yellow | 495-3423 |
| Dark Blue | 495-3400 | Red | 495-3435 |
| Orange | 495-3411 | Black | 495-3447 |



Colour	55 Series Case	
	Grey	Black
Dimensions	23.87x69.85x125.47	23.87x69.85x125.47
Battery Options		
No Battery Compartment	495-3290	495-3344
2AA Battery Compartment	495-3319	495-3368
4AA Battery Compartment	495-3320	495-3370
PP3 Battery Compartment	495-3332	495-3381

337836

Mfrs.	List No.	Order Code	1+	10+	25+	Price Each
55 Series Hand Held Case						
55-12-NO-R-GRY		495-3290				
55-12-2A-R-GRY		495-3319				
55-12-4A-R-GRY		495-3320				
55-12-9V-R-GRY		495-3332				
55-12-NO-R-BL		495-3344				
55-12-2A-R-BL		495-3368				
55-12-4A-R-BL		495-3370				
55-12-9V-R-BL		495-3381				
Protective Boot						
55-RBT-DBL		495-3400				
55-RBT-ORG		495-3411				
55-RBT-YEL		495-3423				
55-RBT-RED		495-3435				
55-RBT-BL		495-3447				
Accessories						
Belt Clip, Black		495-3770				
Belt Clip, Bone		495-3782				

100 Series Hand Held LCD Enclosures



- ABS enclosures with 2 x AA, 4 x AA, PP3 and no battery option
 - Recessed area on top surface for membrane keypads
 - Standard LCD windows for 2 x 16 and 2" LC modules
 - Innovative boot improves durability and protects against damage
 - Integrated tilt bar creates optimal viewing angle and keypad accessibility
- Protective Boot with Integrated Tilt Bar**
- | | | | |
|------------|----------------------|--------|----------|
| Colour | Fits 100 Series Case | Orange | 495-2777 |
| Light Blue | 495-2753 | Red | 495-2790 |
| Dark Blue | 495-2765 | Black | 495-2807 |



Colour	100 Series Case	
	Bone	Black
Dimensions	32.766x101.6x190.5	32.766x101.6x190.5
LCD Window	2x16 LCD	2x16 LCD
Window Size	60x15mm	60x15mm
Battery Options		
No Battery Compartment	495-2674	495-2716
4 x AA Battery Compartment	495-2698	495-2730
PP3 Battery Compartment	495-2704	495-2741

337833

Mfrs.	List No.	Order Code	1+	10+	25+	Price Each
100 Series Cases						
101-42-NO-R-BO		495-2674				
101-42-4A-R-BO		495-2698				
101-42-9V-R-BO		495-2704				
101-42-NO-R-BL		495-2716				
101-42-4A-R-BL		495-2730				
101-42-9V-R-BL		495-2741				
100 Series Protective Boot						
100-RBT-LBL		495-2753				
100-RBT-DBL		495-2765				
100-RBT-ORG		495-2777				
100-RBT-RED		495-2790				
100-RBT-BL		495-2807				
Accessories						
100 Series						
Expander Panel, Black		495-3794				
90 Series						
Belt Clip, Black		495-3770				
Belt Clip, Bone		495-3782				

Grip Case ABS - 33 Series



Innovative and unique enclosure concept to achieve IP65 rating without screws, ergonomically designed for maximum user interface comfort, available in 6 sizes. The range has been developed to meet the highest mechanical demands, complemented by rubberized corners for extra protection and additional grip.

- Moulded in high impact ABS (3mm wall thickness)
- Advanced snap-fit design (without screws)
- Rapid installation by utilizing the four rubberized side elements for a snap-fit assembly
- The battery compartment lid has a retaining screw
- Added security will be achieved by applying the optional retaining screws
- Internal screw pillars are moulded into cover and base for PCB assembly (self-tapping screws)
- Side elements made from Polypropylene coated with TPE
- Up to IP 65, by applying the optional gasket
- Standard Unit includes Lid, base and rubberized side elements (corners)
- The 35mm and 40mm deep sizes include the battery compartment cover and retaining screw

516284

Dimensions (mm) Mfrs.				Price Each					
H	W	D	List No.	Order Code	1+	10+	25+	50+	100+
Light Grey									
25	110	185	33133003	162-0905					
35	110	185	33133004	162-0906					
25	120	200	33133005	162-0907					
35	120	200	33133006	162-0908					

Hand Held Enclosure Pilot 110 - 150 Series



- Polyamide hand enclosure for automation and control engineering
- Version with handle and integrated cable exit
- Large fitting space
- Durably enclosures with high protection grade
- Special formed handle areas for mobile applications
- Prepared for cable glands and interfaces
- Ideally for switches, buttons and membrane keypads

Contents: Enclosure with handle, including cable gland M 20 x 1.5, front panel, enclosure and front panel screws and wall holder.

Mfrs.	List No.	Type	Enclosure dimensions (mm)			Front panel (mm)	
			Width	Length	Height	Width	Height
	29.21 10 00	Pilot 110	85	85	191	77	77
	29.21 20 00	Pilot 120	115	85	191	107	77
	29.21 30 00	Pilot 130	85	85	221	77	107
	29.21 40 00	Pilot 140	160	85	211	152	97
	29.21 50 00	Pilot 150	105	85	266	97	152

604866

Mfrs.	List No.	Description	Order Code	1+	10+	25+	50+	Price Each
	29.21 10 00	Pilot 110	179-9767					
	29.21 20 00	Pilot 120	179-9768					
	29.21 30 00	Pilot 130	179-9771					
	29.21 40 00	Pilot 140	179-9772					
	29.21 50 00	Pilot 150	179-9773					
Accessories								
	29.00 00 80	Magnetic Holder	179-9774					

Hand Held Enclosure

Pilot 250 Series



- Polyamide hand held enclosure for MCR- and automation engineering
- Large fitting space
- Version with closed or front frame cover
- Rear battery compartment
- Durably enclosures with high protection grade
- Special formed handle areas for mobile applications
- Prepared for cable glands and interfaces
- Ideally for switches, buttons and membrane keypads

External Dimensions: W=140,
L=280, H=86mm

Contents: Double-skinned enclosure with top and base unit, each with fixing domes, battery compartment cover, fastening and enclosure screws.

604862

Mftrs.			Price Each			
List No.	Description	Order Code	1+	10+	25+	50+
29.25 00 01	Closed	179-9758				
29.25 00 02	Lid Frame	179-9759				
Accessories						
29.25 01 01	Front Panel	179-9760				
29.25 01 02	Magnetic Holder	179-9761				
29.25 01 03	4 Cell Battery Holder	179-9762				
29.25 01 04	9 Volt Battery Holder	179-9763				
29.25 01 05	Wall Fixing Set	179-9764				
08.10 01 16	M16 Cable Gland	179-9765				
08.10 01 20	M20 Cable Gland	179-9766				

Optional Window

ABS (High Impact)



- High impact ABS cases
- Internal PCB mounting pillars for self-tapping screws
- Removable tilt stand. Can also be used as wall mounting
- Available with open display window or solid front
- Case held together by 6 M3 screws (supplied)

Display Aperture 101.5 x 44.5

External Dimensions			
H	W	D ₁	D ₂
45	237	131	95

230639

		Price Each			
Order Code		1+	5+	10+	25+
With Display Window					
Black	109-4716				
Solid Front					
Black	109-4717				

'Smart' Enclosure

ABS



- Ergonomic pocket size cases for remote controls and hand-held devices
- Four sizes, XS, M, L & XL moulded in off-white and black ABS
- Contoured shape very comfortable to hold while operating controls
- Recessed area in top for mounting a membrane keypad or product label
- Battery compartments: Size M (2 x 1.5V AAA), size L & XL (2 x 1.5V AA)
- Internal screw pillars provided for mounting PCB's. XS supplied with key ring
- Robust screw-on pocket clips available as accessories

Operating temperature -40°C to 70°C

Description	External Dimensions			Mftrs. List No.	Order Code
	Width	Depth	Height		
Smart Cases					
XS black	35.61	57.99	19	A9064109F	537-1132
M off-white	46.99	96.01	24	A9066117F	537-1144
M black	46.99	96.01	24	A9066119F	537-1156
L off-white	62.71	140	30.51	A9067107F	537-1168
L black	62.71	140	30.51	A9067109F	537-1170
XL off-white	74.4	168	35.41	A9068107F	537-1181
XL black	74.4	168	35.41	A9068109F	537-1193
Accessories					
Pocket clip off-white				A9167017	537-1200
Pocket clip black				A9167019	537-1211

341096

Colour	Order Code	Price Each			
		1+	10+	25+	50+
Smart XS					
Black	537-1132				
Smart M					
White	537-1144				
Black	537-1156				
Smart L					
White	537-1168				
Black	537-1170				
Smart XL					
White	537-1181				
Black	537-1193				
Pocket Clip					
Off White	537-1200				
Black	537-1211				

Grip-Tech Hand-Held Enclosure

Type 1



The Grip-Tech range features unique interchangeable rubber side grips allowing for off-the-shelf colour integration to fit customer specific colour requirements. They are all **NEMA 4** rated and moulded with polycarbonate material for extreme durability.

- Polycarbonate material
- **UL94-V0** rated
- **NEMA 4** sealing
- Brass assembly inserts
- Stainless steel assembly screws
- Screw on battery door
- Changeable side grips

Size	Length	Width	Depth
Small	48.26	121.92	187.96
Medium	51.3	123.95	209.8

How To Order:-

1. Pick enclosure style and size

2. Pick side grips for case (sold separately)

3. Pick battery holder (sold separately)

416419

Type	Colour	Mftrs. List No.	Order Code	Price Each		
				1+	5+	15+
Small						
No LCD	Black	210-12-BK	101-4385			
Medium						
No LCD	White	220-12-TW	101-4396			

Grip-Tech Accessories

Battery Compartment



A range of battery compartments especially made for the Grip-Tech range of enclosures.

416458

Type	Colour	Mftrs. List No.	Order Code	Price Each		
				1+	5+	15+
Small						
2 x 9V	Black	SBH-29V-BK	101-4510			
4 x AA	Black	SBH-4AA-BK	101-4515			
1 x 9V	Black	SBH-9V-BK	101-4517			

Grip-Tech Accessories

Rubber Side Grips



A range of rubber side grips especially made for the Grip-Tech range of enclosures.

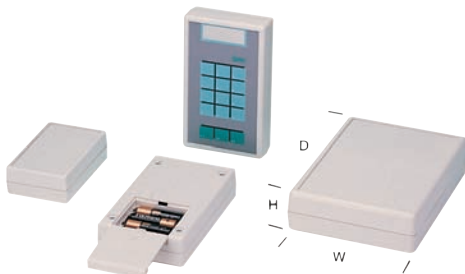
622011

Colour	Mftrs. List No.	Order Code	Price Each		
			1+	5+	15+
Small					
Black	21G-BK	101-4519			
Grey	21G-GY	101-4521			
Blue	21G-LB	101-4522			
Red	21G-RD	101-4525			
Medium					
Black	22G-BK	101-4527			
Blue	22G-LB	101-4530			
Red	22G-RD	101-4532			

'Shell with Recess' (Optional Battery Compartment)



PS



- Stylish and robust cases in off-white RAL9002 textured high impact polystyrene
- Recessed top for mounting membrane keypads and product labels
- Internal mounting pillars in top and base for PCBs
- Three sizes available with or without battery compartment

Operating temperature -40°C to +80°C

External Dimensions			Recess Area	Battery Compartment	Mfrs. List No.	Order Code
H	W	D				
33.5	95	158	81.5x144.5x1	none	A9408351	775-290
33.5	95	157.99	81.5x144.5x1	4 x 1.5V x AA	A9408357	775-307
45.5	138	190	120x172x1	none	A9413351	775-319
45.49	138	189.99	120x172x1	4 x 1.5V x AA	A9413357	775-320

230634

Order Code	Price Each			
	1+	10+	25+	50+
775-290				
775-307				
775-319				
775-320				

Window 'Datec Mobil' (Battery Compartment)



ABS



- Stylish, robust and ergonomic ABS cases with top recess for membrane key pads
- Ideal for test and measurement, data-loggers and other hand held instruments
- Two sizes M & S in two colours off-white and black
- With or without LCD display window aperture
- Battery compartments: M takes 4xAA and S takes 2xAA or 1xPP3 cells
- Internal mounting pillars in top and base for PCBs
- Order separately the size M battery compartment and battery clips

Operating temperature -40°C to +90°C

	External Dimensions			Recess Area	Window Area	Mfrs. List No.	Order Code
	H	W	D				
M black	43.99	100.99	195	81x168	No window	A9074109	774-753
M black	43.99	100.99	195	81x168	60 x 15	A9074209	775-939
S off-white	33.5	83.01	151.99	68x129.5	No window	A9073107	774-765
S black	33.5	83.01	151.99	68x129.5	No window	A9073109	774-789

Battery Compartment for size M (pre-moulded in size S case) A9174004 774-807

Battery clips set for 4 AA cells for size M A9161001 774-819

Battery clips set for 2 AA cells for size S A9194001 774-820

219606

Order Code	Price Each			
	1+	10+	25+	50+
Size M Case Without Window				
Black	774-753			
Size M Case With Window				
Black	775-939			
Size S Case Without Window				
White	774-765			
Black	774-789			
Accessories				
Battery Compartment for M	774-807			
Battery Clips for Size M	774-819			
Battery Clips for Size S	774-820			

Multipurpose

ABS



- Made of high impact ABS plastic
- Flammability rating UL 94-V0
- Two part design with tongue and groove joint between case halves
- Light grey end panels
- IP54 sealing
- Internal guide slots for vertical PCB mounting
- Bosses are provided for horizontal mounting of PCB's

- Lid and base secured by 4 x M3 countersunk screws
- Replaces Veronex range of cases

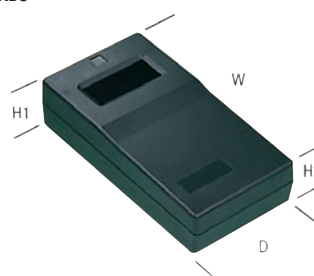
499230

External Dimensions (mm)		Mfrs. List No.	Order Code	Price Each			
H	W			1+	10+	25+	50+
16	90	50	G401	152-6726			
24	90	50	G403	152-6727			
32	50	90	G404	152-6729			
30	120	60	G407	152-6731			
40	120	60	G410	152-6732			
50	120	60	G412	152-6733			
30	150	80	G413	152-6734			
45	150	80	G416	152-6735			
60	150	80	G418	152-6736			
40	190	100	G421	152-6737			
60	190	100	G422	152-6738			
80	190	100	G425	152-6739			

Window (Battery Compartment)



ABS



- Low cost, high quality calculator style cases, moulded in black ABS
- Integral battery compartment with sliding cover
- Will accommodate 2 x PP3 batteries
- Internal PCB pillars provided in both halves of case
- Small removable panel at window end of case is provided to facilitate leads etc.

External Dimensions				Max. PCB Size		Display Window
H ₁	H ₂	W	D	Top	Bottom	
37.5	33	154	81	107x71	105x56	49x19

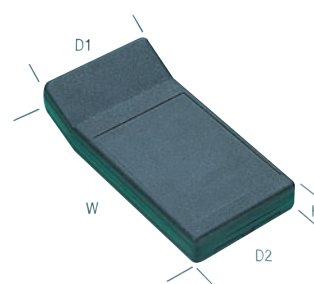
230638

Colour	Mfrs. List No.	Order Code	Price Each		
			1+	25+	50+
Black	BC4	645-758			

Sloped Window - '2900 Series' (Battery Compartment)



ABS



- Moulded in black ABS. Easily drilled or punched
- Incorporates 1 x PP3 battery compartment with removable lid
- 24° angled display area can accommodate various LCDs with bezels
- Internally moulded mounting bosses provided on lid
- Recessed keypad area. Four rubber feet provided

H = 25, W = 165, D₁ = 87, D₂ = 83

230642

Order Code	1+	Price Each	
		10+	25+
117-1649			

Hand Held Enclosure with Removable Panel



ABS



- Lap joint construction
- Complete with removable front panel
- Panels are light grey ABS
- Fixing screws and PCB mounting screw are supplied
- Designed to meet IP 65
- Flame retardant ABS according to UL 94 HB

499249

Dimensions (mm)			Mftrs.	Price Each				
H	W	D	List No.	Order Code	1+	10+	25+	50+
25	60	25	MCRH3115	152-0393				
120	70	25	MCRH3135	152-0394				
32	100	40	MCRH3165	152-0395				
40	135	40	MCRH3185	152-0396				

Wall Mount Enclosures

'Art' Enclosure ABS



- Unique round enclosures for hand-held, desktop or wall mounted electronics
- Recess in top for mounting a membrane keypad or product label (Ø72)
- Moulded in off-white ABS with internal screw pillars for mounting PCB's
- Range of four models with flat or inclined bottom parts
- Two models have extension bases which increase the unit height and tilt the front section 30° or 60°

- Easy assembly with bayonet fitting and a single fixing screw
- Operating temperature -40°C to 70°C

Technical Data

Art Cases	External Dimensions		Bottom Part	Extension Base	Mftrs. List No.	Order Code
	Ø	Height				
Type I	110	30	Flat	No	B5011007	537-1016
Type II	110	38	Inclined	No	B5011207	537-1028
Type III	110	63	Inclined	Yes - 30°	B5011407	537-1030
Type IV	110	95	Inclined	Yes - 60°	B5011607	537-1041

Accessories

Battery compartment kit for 2x1.5V AAA cells	B5011107F	537-1053
--	-----------	----------

Mftrs. List No.	Order Code	1+	5+	10+	25+
-----------------	------------	----	----	-----	-----

Art Cases

B5011007	537-1016	
B5011207	537-1028	
B5011407	537-1030	
B5011607	537-1041	

Accessories

B5011107F	537-1053	
-----------	----------	--

Face to Face Enclosures UNITEC

NEW



The new UNITEC range of cases is characterised by two operating panels with different inclinations at right angles to each other. Depending on the application, these can be used for operating and/or reading-off purposes, thus allowing simultaneous applications, for example a doctor face to face with a patient.

- Manufactured from ABS
- Desk-top or wall mounting
- Colour: Off-White
- 72° / 18° inclination

Mftrs. List No.	Dimensions (mm)			Order Code	Price Each			
H	W	D	1+		5+	10+	25+	

Recess Front / Top Part: 1.4mm / 1.4mm

B4054117	177	125	69	189-2749				
B4056117	210	148	80	189-2751				

Recess Front / Top Part: 0.6mm / 1.4mm

B4054317	177	125	69	189-2750				
B4056317	210	148	80	189-2752				

Hand Held or Wall Mount - starCASE ABS



- Advanced contoured enclosures with IP 66 seal lid
- Suitable for wall mounting or portable applications
- Hinged flush-fitting trims hide the case fixing screws
- Two lid retaining straps included
- Flame retardant UL 94 V-0 material



Enclosure External Dimensions (mm)			Mounting Holes	Order Code
H	W	D		
50	90	120	99 x 34mm	123-6627
50	90	160	139 x 34mm	123-6628
60	110	140	102 x 95	187-7977
60	110	200	179 x 54mm	123-6629
60	130	160	139 x 74mm	123-6630
60	170	280	259 x 114mm	123-6631

Mftrs. List No.	Order Code	1+	10+	25+	50+	+
Enclosures - (7035)						
230.090.000	123-6627					
230.092.000	123-6628					
230.110.000	187-7977					
230.112.000	123-6629					
230.130.000	123-6630					
230.172.000	123-6631					

Electrical Enclosures starCASE



- Electronic enclosures with stylish and modern ergonomic design
- Go anywhere: wall, bulkhead, machine etc.
- Integated recess for membrane keypads
- Hinged cover trims hide case fixing screws
- Enclosure can be installed after closing
- Flame retardant material



NEW

- Integrated lid retaining straps

Colour Material	Grey ABS	IP Rating	66
Operating Temperature	-40°C to 120°C		

Dimensions (mm)			Mftrs. List No.	Order Code	1+	10+	25+	50+
H	W	D	230.110.000	187-7977				
60	110	140						

Wall/Table Mount - Diatec ABS



- Flat enclosure design
- Plain recessed area at bottom for protection of interfaces
- Invisible Mounting
- Recessed operating area protects operating elements
- Matched colour hinged lid



Mftrs. List No.	Dimensions (mm)			Order Code	Price Each			
H	W	D	1+		5+	10+	25+	

Off-White

A9092107F	37	150	155	NEW 189-2742				
A9093107	48	210	200	123-6632				
A9094107	48	270	200	123-6633				
A9095107F	48	330	200	NEW 189-2747				

Lava

A9092108F	37	150	155	NEW 189-2743				
A9093108F	48	210	200	NEW 189-2744				
A9094108F	48	270	200	NEW 189-2746				
A9095108F	48	330	200	NEW 189-2748				

Datamet - Wall Mount Aluminium - Indoor Use



Modern aluminium enclosures designed for indoor use. Provide total access to the contents during installation on the wall. They are designed with die-cast front bezel, top cover and L shaped rear panels. Front panels and internal mounting plate kits are available separately.

Case	External Dimensions			For use with Case Size	Order Code
	H	W	D		
Case	300	400	116	Large	132-9973
Front Panel	159.5	220		Small	132-9974
	279.5	370		Large	132-9976

Mftrs. List No.	Order Code	1+	5+	10+	25+
-----------------	------------	----	----	-----	-----

M5840105	132-9973				
----------	----------	--	--	--	--

M5800025	132-9974				
----------	----------	--	--	--	--

M5800040	132-9976				
----------	----------	--	--	--	--

Wall Mount Enclosures - continued

IP65, PC or ABS

Cardmaster 3 - Smoked Transparent Cover



The Cardmaster family of enclosures is designed to provide a safe and dependable solution to instrument packaging. Ideal for measurement, monitoring and process control equipment. Modern, durable materials are combined with an easy and reliable locking system and transparent door, to protect instrumentation and electronics. Enclosure base, terminal compartment cover, polyamide hinges, locking devices, wall fastening cover plug and mounting screws are included to make installation and use of this range of enclosures easy.

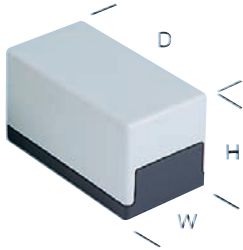
- IP 65 rated
- Impact resistant polycarbonate or ABS
- Easy and reliable locking system
- Separate compartment for terminal wiring

- Built in PCB card guides
- Certified by **Fimko, EN 50298 1998, Gost R** and **UL Recognised**

446512

Mftrs. List No.	Dimensions (mm)			Order Code	Price Each		
H	W	D		1+	10+	25+	
Polycarbonate							
PC 17/16-3	188	160	134	112-3374			
PC 21/18-3	235	185	119	112-3375			
PC 25/22-3	156	219	280	125-6250			
PC 30/25-3	296	256	123	125-6251			
ABS							
ABS 17/16-3	166	160	134	125-6253			
ABS 21/18-3	213	185	118	125-6254			
ABS 25/22-3	156	216	280	125-6255			
ABS 30/25-3	296	256	123	125-6256			

Desktop/Wall Mount Electronic Enclosure Element



- High impact resistant polystyrene cases with knockouts for wall mounting
- Four internal posts allow mounting of PCBs
- Screw holes have recesses which accept sealing compound for tamper proofing
- Operating temperature -40°C to 65°C

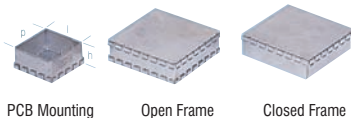
Order Code	External Dimensions		
	H	W	D
117-7048	25	50	100
117-7049	40	65	120
112-4099	65	65	120
117-7050	55	80	150
117-7052	70	110	188
117-7053	100	110	188

203408

Type	Order Code	Price Each			
		1+	10+	25+	50+
E410	117-7048				
E430	117-7049				
E435	112-4099				
E440	117-7050				
E450	117-7052				
E460	117-7053				

Screening Cans

RFI/EMI Screening



- Quick, efficient and cost effective specific board level screening
- PCB mounting, open frame, closed frame, screening strips and can types available
- Fingered lids provide easy access whilst maintaining good attenuation
- Bright steel construction to **BS1449 Pt.1 CR4**
- Divider strip available for PCB mounting types

224446

H	W	D	Mftrs.	Order Code	Price Each		
			List No.		1+	10+	20+
PCB Mounting							
11	25	25	PFL1T	118-1371			
16	35	35	PFL5T	118-1372			
16	30	55	PFL2T	118-1374			
16	55	55	PFL6T	118-1375			
55	26	80	PFL3T	118-1376			
26	80	80	FPFL7T	118-1377			

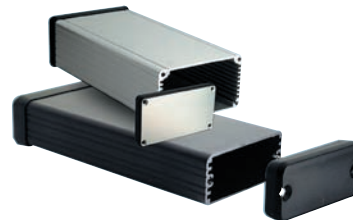
H	W	D	Mftrs.	Order Code	Price Each		
			List No.		1+	10+	20+
PCB Mounting							
55	26	105	PFL4T	118-1378			
80	26	130	PFL8T	118-1379			
55	16	80	PFL9T	118-1395			
11	30	30	PFL11T	118-1396			
16	45	45	PFL12T	118-1398			
Open Frame							
17	55	55	FFL1T	118-1380			
17	55	80	FFL5T	118-1381			
27	55	105	FFL2T	118-1382			
37	105	165	FFL3T	118-1383			
52	105	225	FFL4T	118-1384			
Closed Frame							
17	55	55	CFL1T	118-1386			
27	55	80	CFL2T	118-1387			
37	55	105	CFL3T	118-1388			
52	105	165	CFL4T	118-1389			
17	35	35	CFL6T	118-1392			
17	30	55	CFL7T	118-1393			
27	80	80	CFL8T	118-1394			
PCB Can							
16	21	21	PCMC1	444-6641			
16	26	26	PCMC2	444-6653			
16	31	41	PCMC5	444-6689			
16	41	41	PCMC7	444-6707			
16	51	51	PCMC8	444-6719			
21	41	61	PCMC9	444-6720			
26	51	71	PCMC10	444-6732			
26	76	76	PCMC11	444-6744			
Screening Strips x 5							
232	10	0.54	SS232/10-5PK	444-6768			
232	15	0.54	SS232/15-5PK	444-6770			
232	20	0.54	SS232/20-5PK	444-6781			
Divider Strip for PCB Mounting							
				SS185/25T	118-1390		

Desktop & Instrument Enclosures

Aluminium Instrument Housing - IP54



1455 Series



- Rugged clear anodised extruded aluminium body
- Suitable for housing PCB's, equipment interfacing or hand held applications
- PCB's mount horizontally into internal slots in the body
- All except smallest size (23mm H) have a removable large side to enable easy machining
- Two end panel options:
Version 1 - 2 x anodised aluminium end panels that can be mounted into attractive black plastic bezels or directly on to body
Version 2 - 2 x black plastic end panel with integral bezel
- Hardware and 4 x self-adhesive rubber feet included with both versions

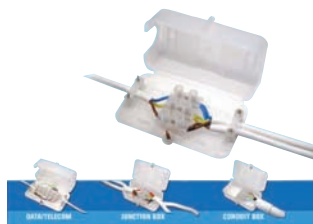
246059

H	W	D	Mftrs.	Order Code	Price Each				
			List No.		1+	10+	25+	50+	
Version 1 - Extrusion Colour -									
23	54	80	1455C801	427-2810					
23	54	120	1455C1201	427-2821					
43	78	120	1455K1201	427-2857					
27	78	120	1455J1201	427-2833					
30.5	103	120	1455L1201	427-2870					
53	103	120	1455N1201	427-2900					
27	78	160	1455J1601	427-2845					
43	78	160	1455K1601	427-2869					
30.5	103	160	1455L1601	427-2882					
53	103	160	1455N1601	427-2912					
30.5	125	160	1455P1601	151-1212					
51.5	125	160	1455Q1601	151-1214					
51.5	165	160	1455T1601	151-1218					
30.5	103	220	1455L2201	427-2894					

External Dimensions			Mftrs.	Price Each				
H	W	D	List No.	Order Code	1+	10+	25+	50+
Version 1 - Extrusion Colour -								
53	103	220	1455N2201	427-2924				
51.5	125	220	1455Q2201	151-1223				
51.5	165	220	1455T2201	151-1227				
Version 1 - Extrusion Colour - Black								
23	54	80	1455C801BK	928-7787				
27	78	120	1455J1201BK	928-7809				
43	78	120	1455K1201BK	928-7825				
30.5	103	120	1455L1201BK	928-7841				
53	103	120	1455N1201BK	928-7876				
43	78	160	1455K1601BK	928-7833				
30.5	103	160	1455L1601BK	928-7850				
53	103	160	1455N1601BK	928-7884				
30.5	125	160	1455P1601BK	151-1213				
51.5	125	160	1455Q1601BK	151-1215				
30.5	165	160	1455R1601BK	151-1217				
51.5	165	160	1455T1601BK	151-1219				
53	103	220	1455N2201BK	928-7892				
51.5	125	220	1455Q2201BK	151-1224				
51.5	165	220	1455T2201BK	151-1228				
Version 2 - Extrusion Colour - Transparent								
19	71.7	80	1455B802	124-4177				
23	54	80	1455C802	427-2936				
23	54	120	1455C1202	427-2948				
27	78	120	1455J1202	427-2950				
43	78	120	1455K1202	427-2973				
30.5	103	120	1455L1202	427-2997				
53	103	120	1455N1202	427-3023				
27	78	160	1455J1602	427-2961				
30.5	103	160	1455L1602	427-3000				
53	103	160	1455N1602	427-3035				
53	103	220	1455N2202	427-3047				
51.5	165	220	1455T2202	151-1244				
Version 2 - Extrusion Colour - Black								
23	54	80	1455C802BK	928-7906				
23	54	120	1455C1202BK	928-7914				
27	78	120	1455J1202BK	928-7922				
43	78	120	1455K1202BK	928-7949				
30.5	103	120	1455L1202BK	928-7965				
53	103	120	1455N1202BK	928-7990				
43	78	160	1455K1602BK	928-7957				
30.5	103	160	1455L1602BK	928-7973				
53	103	160	1455N1602BK	928-8007				
53	103	220	1455N2202BK	928-8015				
51.5	165	220	1455T2202BK	151-1246				

ChocBox

Polypropylene inline Connector/Junction Box



H = 30, W = 90, D = 50mm

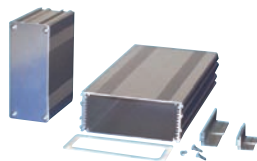
The patented Chocbox is a safe and simple covering solution to protect and insulate electrical connections. The Chocbox can be used as a cover, junction box or inline connector. It is designed to meet the requirements of the IEE regulations and the Health & Safety executive. I.e. insulation of bare connectors. Flammability rating (White version) **UL94V-0** Supplied with 2 cable clamps and mounting screws.

491862.498873

		Price Each			
Colour	Mftrs. List No.	Order Code	1+	10+	50+
Case					
White	CHOCBOX V0	151-1698			

Extruded Heat Sink Case

Anodized Aluminium



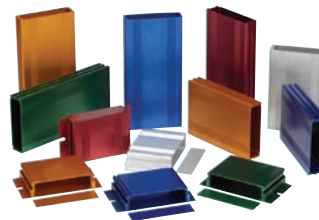
Silver anodized aluminium extruded box section that is designed to accept PCB's. The range of boxes is ideal for small circuits, R.F. amplifiers etc. This series features dovetail slots down the side which will accept a Linc-Lug mounting bracket to facilitate surface mounting of the box. One side of the box features two sets of appearance enhancing grooves. Between the set of grooves is a shallow (0.5mm deep) recess which could be used for a label.

- Manufactured from aluminium 6063
- Silver anodised finish of 5µm thickness, which can easily be painted
- Available in three different lengths
- Cases include end panels and screws which are not be fitted
- The gasket sets comprise of 2 gaskets and 8 washers
- Gasket available to seal to **IP65**

501682

Dimensions (mm)				Price Each				
H	W	L	Mftrs. List No.	Order Code	1+	10+	50+	100+
30	63.5	40	MCREAS40	154-9964				
30	63.5	80	MCREAS80	154-9965				
30	63.5	120	MCREAS120	154-9966				
30	108.5	80	MCREBS80	154-9967				
30	108.5	160	MCREBS160	154-9968				
30	108.5	220	MCREBS220	154-9969				
45	108.5	80	MCRECS80	154-9970				
45	108.5	160	MCRECS160	154-9971				
45	108.5	220	MCRECS220	154-9973				
53.5	156.9	80	MCREDS80	154-9974				
53.5	156.9	160	MCREDS160	154-9975				
53.5	156.9	220	MCREDS220	154-9976				
Accessories - Black ABS Bezels								
To fit: MCREAS Cases MCZAB1				154-9977				
MCREBS Cases MCZBB1				154-9979				
MCRECS Cases MCZCB1				154-9980				
MCREDS Cases MCZDB1				154-9981				
Accessories - Gasket Sets								
To fit: MCREAS Cases MCGEA1				154-9982				
MCREBS Cases MCGEB1				154-9983				
MCRECS Cases MCGEC1				154-9985				
MCREDS Cases MCGED1				154-9986				
Accessories - Linc Lugs (PK of 2)								
40mm With fitted screw MCLPS40				154-9958				
80mm MCLPS80				154-9961				

Aluminium Instrument Housing



- Integrated PCB guides
- Highest quality anodizing with durable protective finish
- NEMA 4 sealing with sealing kit
- High EMI/RFI protection
- Mounting flanges available

All enclosures include: 1 extruded case, 2 end panels and assembly screws

416742

Dimensions (H x W x D)		Colour	Price Each		
			1+	10+	50+
Series 1					
29.5x63.5x39.878	Silver	B1-040SI	101-5164		
29.5x63.5x39.878	Black	B1-040BK	101-5165		
29.5x63.5x39.878	Blue	B1-040BL	101-5166		
29.5x63.5x80.5	Silver	B1-080SI	101-5168		
29.5x63.5x80.5	Black	B1-080BK	101-5169		
29.5x63.5x80.5	Blue	B1-080BL	101-5170		
29.5x63.5x80.5	Red	B1-080RD	101-5171		
29.5x63.5x80.5	Green	B1-080GR	141-8573		
Series 2					
29.5x108.5x80.5	Silver	B2-080SI	101-5172		
29.5x108.5x80.5	Black	B2-080BK	101-5173		
29.5x108.5x80.5	Blue	B2-080BL	101-5174		
29.5x108.5x80.5	Red	B2-080RD	101-5176		
29.5x108.5x80.5	Gold	B2-080GD	141-8582		
29.5x108.5x160.5	Silver	B2-160SI	101-5177		
29.5x108.5x160.5	Black	B2-160BK	101-5178		
29.5x108.5x160.5	Blue	B2-160BL	101-5179		
Series 3					
44.5x108.5x80.5	Silver	B3-080SI	141-8593		
44.5x108.5x80.5	Black	B3-080BK	141-8594		
44.5x108.5x80.5	Blue	B3-080BL	141-8595		
44.5x108.5x80.5	Red	B3-080RD	141-8596		
44.5x108.5x160.5	Silver	B3-160SI	101-5181		
44.5x108.5x160.5	Black	B3-160BK	101-5182		
44.5x108.5x160.5	Blue	B3-160BL	101-5183		
44.5x108.5x160.5	Red	B3-160RD	101-5184		
44.5x108.5x160.5	Gold	B3-160GD	141-8599		
44.5x108.5x220.5	Black	B3-220BK	101-5186		
44.5x108.5x220.5	Red	B3-220RD	101-5189		

Desktop & Instrument Enclosures - continued

Aluminium Instrument Housing - continued

Dimensions (H x W x D)		Colour		Price Each		
				1+	10+	50+
Series 4						
53.3x169.8x160.5	Silver	B4-160SI	101-5190	●		
53.3x169.8x160.5	Black	B4-160BK	101-5191	●		
53.3x169.8x160.5	Blue	B4-160BL	101-5192	●		
53.3x169.8x160.5	Red	B4-160RD	101-5193	●		
53.3x169.8x220.5	Silver	B4-220SI	101-5194	●		
53.3x169.8x220.5	Black	B4-220BK	101-5195	●		
53.3x169.8x220.5	Blue	B4-220BL	101-5196	●		
NEMA 4 Sealing Kits						
Sealing Kit, Series 1		SK1	101-5208	●		
Sealing Kit, Series 2		SK2	101-5209	●		
Sealing Kit, Series 3		SK3	101-5210	●		
Sealing Kit, Series 4		SK4	101-5211	●		
Screws						
Cross head	Black	STB-008	141-8631	●		
Torx head	Black	TFB-008	141-8633	●		

Heat Sink Cases

Sink Box Series



- Extruded aluminium heat sink cases
- Fins on one side provide heat dissipation
- PCB's mount horizontally into internal extruded slots
- Internal and external T-Slots for further mounting options



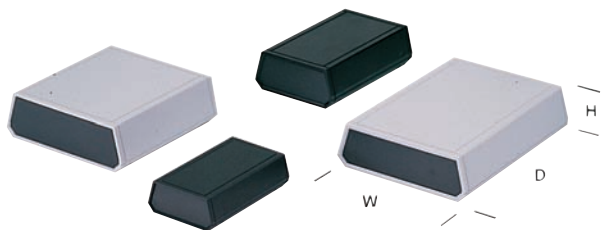
Dimensions (mm)				Mfrs. List No.	Order Code
Height	Width	Depth	Colour		
51	90	100	Black	431609	124-4230
51	90	200	Black	431610	124-4233
60	105	125	Black	431611	124-4234
60	105	165	Black	431621	124-4235
60	105	225	Black	431622	124-4236
60	105	285	Black	431623	124-4237

444612

Size Classification			Price Each				
H	W	D	Order Code	1+	10+	25+	50+
Black							
51	90	100	124-4230	●			
51	90	200	124-4233	●			
60	90	125	124-4234	●			
60	105	165	124-4235	●			
60	105	225	124-4236	●			
60	105	285	124-4237	●			

Panel - 'A Series'

ABS



- Stylish clam shell ABS cases in two colours black and mid-grey
- Supplied with black removable end panels
- Internal mounting pillars in top and base for PCBs
- Assembly by four or six, depending upon size, self tapping screws

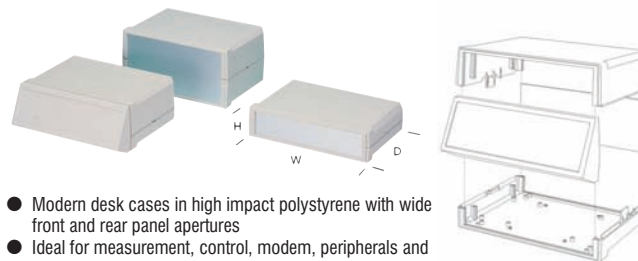
Operating Temperature -40°C to +90°C

230614

Mfrs. List No.	External Dimensions			Price Each				
	H	W	D	Order Code	1+	10+	25+	50+
Black Cases								
A-20BK	22.352	66.04	107.95	775-496	●			
A-21BK	28.575	66.04	107.95	775-514	●			
A-27BK	38.1	85.09	134.874	775-538	●			

Panel - 'Motec'

PS



- Modern desk cases in high impact polystyrene with wide front and rear panel apertures
- Ideal for measurement, control, modem, peripherals and medical equipment etc.
- Large range in off-white RAL9002 with three plan sizes L, M and S, each with three heights
- Strong clip-together assembly, disassembly by screw driver only - for security
- Optional aluminium and plastic sloping panels for mounting controls, displays and membranes
- Internal mounting pillars for PCBs, and four non-slip feet provided

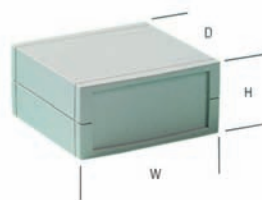
	Dimensions (mm)			Front Panel	Mfrs. List No.	Order Code
	H	W	D			
Motec Cases						
Cases L	85	235	165	—	B3023127	774-881
Cases M	75	205	140	—	B3020127	774-911
Cases S	65	155	105	—	B3015127	774-947
Cases S	90	155	105	—	B3015137	774-959
Aluminium Front/Rear Panels						
For case height 75				67 x 185 x 1.5	B3120110	775-010
For case height 85				77 x 214 x 1.5	B3123110	774-972
For case height 90				82 x 136 x 1.5	B3115120	775-060
Sloping Front Panel Moulding						
For case height 65					B3115167	775-071
For case height 75					B3120167	775-034
For case height 85					B3123167	774-996

621977

	Order Code	Price Each			
		1+	5+	10+	25+
Motec L Cases					
Height 85	774-881	●			
Motec M Cases					
Height 75	774-911	●			
Motec S Cases					
Height 65	774-947	●			
Height 90	774-959	●			
Aluminium Front/Rear Panels					
For Case Height 75	775-010	●			
For Case Height 85	774-972	●			
For Case Height 90	775-060	●			
Sloping Front Panel Moulding					
For Case Height 65	775-071	●			
For Case Height 75	775-034	●			
For Case Height 85	774-996	●			

IP40 Polystyrene Desktop Enclosure

Unimas



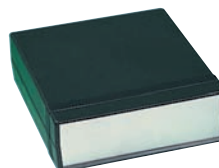
- Polystyrene moulded cases with removable front and rear panels. Sealed to IP40
- PCBs can be mounted using guides or snap action facility
- Ideal for housing small appliances and circuit boards

230587

External Dimensions			Price Each			
H	W	D	Order Code	1+	25+	50+
40	85	81	117-7064	●		
60	135	132	117-7065	●		
60	107	110	121-7478	●		
75	133	110	121-7479	●		

Instrument Case - '1598 Series'

IP54, ABS (Flame Retardant)



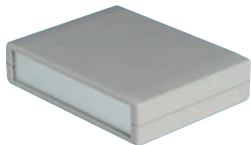
- Attractively styled instrument cases sealed to IP54
- Flame retardant ABS construction. Flammability test to UL94V-0
- Tongue and groove system provides protection against dust and water ingress
- Two sets of vertical PCB guides provided in front and rear of case
- Supplied with two brushed aluminium panels

230611

External Dimensions			Price Each			
H	W	D	Order Code	1+	10+	25+
Black						
157	94	36	722-560			
134	135	50	722-583			
180	155	52	722-601			
180	206	64	722-625			
160	160	86	722-649			
250	160	40	722-662			
250	160	76	722-686			
78	200	280	722-728			

Desk Top Instrument Cases

ABS



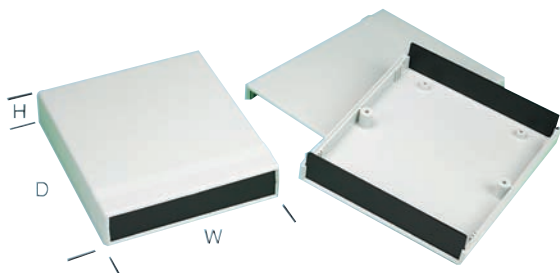
- Moulded in light grey ABS
- Flame retardant to **UL 94 V-0**
- Two part clam-shell construction designed to meet IP43
- Interchangeable front and rear panels
- Supplied with 2 x fixing screws and 4 x PCB mounting screws
- -40 to 75°C operating temperature

499338

Dimensions (mm)			Mftrs.	Price Each				
H	W	D	List No.	Order Code	1+	10+	25+	50+
30	30	100	MCRM2015S	152-0397				
30	30	140	MCRM2055S	152-0400				
50	50	100	MCRM2015M	152-0399				
50	50	140	MCRM2055M	152-0401				
190	190	70	MCRM2055L	163-5117				
250	250	180	MCRM2095M	163-5119				
250	250	100	MCRM2095L	163-5120				

Panel - 1598 Series

IP54, ABS



- Modern, low profile instrument cases moulded in grey ABS
- Front and rear panels moulded in black ABS
- Tongue and groove system provides protection against dust and water
- Sealed to **IP54**
- PC card guides and bosses provided in base and lid

203441

Mftrs.	Dimensions			Price Each				
List No.	H	W	D	Order Code	1+	5+	10+	25+
1598ASGYPBK	157	94	36	142-6553				
1598BSGYPBK	134	135	50	142-6554				
1598BSGYPBK	179	154	36	142-6555				
1598CSGYPBK	180	155	52	142-6556				
1598DSGYPBK	180	206	64	142-6557				
1598FSGYPBK	250	160	40	142-6558				
1598GSGYPBK	250	160	76	142-6559				
1598HSGYPBK	280	200	40	142-6560				
1598JSGYPBK	280	200	76	142-6561				

Panel - 'Lux Cases' (Two-Tone)

ABS



- Moulded in two tone grey (RAL9002 and RAL7032) with anodised front panel
- Base has several PCB mounting points
- Internally moulded card guides enable horizontal or vertical PCB mounting
- Order code 207-755 has ventilation holes

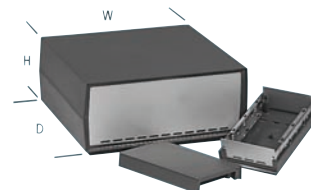
External Dimensions			Max. PCB Size	Order Code
H	W	D		
67	148	190	160x100	207-743
136	173	230	160x100	207-755

218872

Price Each				
Order Code	1+	10+	20+	60+
207-743				
207-755				

Panel - Elbox

ABS



- Attractively styled cases moulded in ABS
- With 1.2mm anodised aluminium front and rear panels
- Facilities in base allow mounting of euro-cards
- Ventilation slots provided in base and rear panel
- Supplied with tilt feet.

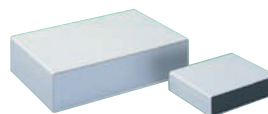
Size	External Dimensions			Front Panel		Eurocard Size	Order Code
	H	W	D	H	W		
3	76.4	181	232.6	61	212	2 (160 x 100) or (220 x 100)	117-1622
4	101.2	220	245.8	86	228	2 (160 x 100) or (233 x 160)	117-1623

230597

Mftrs.	Price Each				
Size	List No.	Order Code	1+	10+	25+
3	3503	117-1622			
4	3504	117-1623			

Panel

ABS (Flame Retardant/Impact Resistant)



- High impact textured ABS. Flame retardant to **UL94V-0**
- Available with ABS or aluminium front and back panels
- Guide slots for vertical mounting PCBs.
- PCB Mounting pillars for self tapping screws.

- Supplied with rubber feet except 109-4711
- Parts with "V" suffix are provided with venting holes

230613

External DimensionsMftrs.				Price Each				
H	W	D	List No.	Order Code	1+	5+	10+	25+
ABS Panels								
35	140	110	G738	109-4711				
40	225	165	G747	109-4712				
65	260	180	G758	109-4714				
75	300	200	G756V	152-6697				
85	260	180	G753	152-6693				
105	260	180	G754	152-6694				
Aluminium Panels								
35	140	110	G738A	152-6699				
65	225	165	G748A	152-6701				
65	260	180	G758A	109-4715				
75	300	200	G756AV	152-6711				
90	225	165	G749A	152-6702				
105	260	180	G754A	152-6708				

Aluminium Instrument Case

110 Series



- Innovative concept optimising both the case assembly as well as mounting the actual equipment
- The basic structure comprises U-shaped steel lid and base and two aluminium extruded side profiles with attached plastic brackets which

- hold the front and rear panels in place
- Side profiles include guide rails for mounting PCBs or other components
- Front brackets incorporate handles (sizes 5, 6, 7) with side covers hiding the ¼ turn assembly bolts
- Lid and base can be dismantled independent of each other
- Ventilation slots are provided towards the rear of both the lid and base
- The four smaller sizes (1, 2, 3, 4) have four non-slip feet
- The three larger sizes (5, 6, 7) are supplied with two tilting- and two non-slip feet
- Lid and base in 1mm steel sheet, painted epoxy textured, colour graphite grey
- Side profiles in 6063 aluminium extrusion, matt silver anodised
- Front/rear panels in 1070 aluminium, 1mm (1, 2, 3, 4 sizes) or 2mm thick (5, 6, 7 size)

Desktop & Instrument Enclosures - continued

Aluminium Instrument Case - continued

110 Series - continued

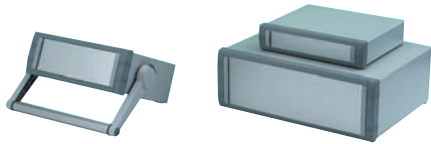
- es), silver anodised
- Brackets and tilting feet moulded in high impact ABS, graphite grey colour

493088

Size	Dimensions (mm)			Mfrs. List No.	Order Code	Price Each			
	H	W	D			1+	5+	10+	25+
1	70	150	140	31110001	151-1423				
2	70	200	200	31110002	151-1424				
3	80	225	170	31110003	151-1425				
4	90	250	200	31110004	151-1426				
5	100	300	220	31110005	151-1428				
6	120	350	260	31110006	151-1429				
7	130	400	300	31110007	151-1430				

'Unimet' Enclosure

Aluminium



- Modern aluminium instrument cases in four sizes
- Stylish die-cast front bezel is assembled to the folded case body
- All models are painted light grey RAL 7035 and mid grey RAL 7040
- Three models are available with a robust tilt and swivel carry handle
- Removable rear panel is recessed to protect connectors and switches
- Pre-punched base with holes for mounting M3 screw pillars for PCB's
- An anodised aluminium front panel and four non-slip rubber feet are included
- Alternative moulded tilt feet available as accessories



Dimensions (mm)

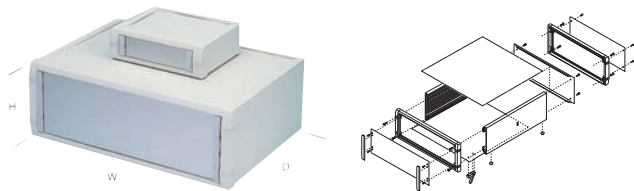
H	W	D	Mfrs. List No.	Order Code	Price Each			
					1+	10+	25+	50+
Grey								
50	130	180	M5511110	151-0820				
52	185	250	M5512110	151-0821				
50	250	250	M5513110	151-0822				
50	250	300	M5514110	151-0823				
60	185	180	M5501110	151-0825				
90	260	250	M5502110	151-0826				
110	350	250	M5503110	151-0827				
134.5	261	300	M5504110	151-0828				
134.5	367	300	M5505110	151-0829				
134.5	474	300	M5506110	151-0830				

Black

50	130	180	M5511119	NEW 189-2772				
50	185	250	M5512119	NEW 189-2773				
50	250	250	M5513119	NEW 189-2774				
50	250	300	M5514119	NEW 189-2775				
65	185	180	M5501119	NEW 189-2764				
90	260	250	M5502119	NEW 189-2765				
110	350	250	M5503119	NEW 189-2766				
134.5	261	300	M5504119	NEW 189-2767				
134.5	367	300	M5505119	NEW 189-2768				
134.5	474	300	M5506119	NEW 189-2771				

Panel - 'Mettec'

Aluminium



Unimet Cases	External Dimensions			Mfrs. List No.	Order Code
	Width	Depth	Height		
Size 2	230	190	85	M5623105F	537-1235
Size 2H with handle	230	190	85	M5623125F	537-1247
Size 3	250	260	85	M5625105F	537-1259
Size 3H with handle	250	260	85	M5625125F	537-1260
Size 4	350	260	120	M5635205F	537-1272
Size 4H with handle	350	260	120	M5635225F	537-1284
Size 5	250	260	150	M5625305F	151-0840
Size 6	350	260	150	M5635305F	151-0841
Size 6H with Handle	350	260	150	M5635325F	151-0843
Accessories					
Tilt feet kit (4 ABS feet & 2 ABS tilt legs)				A9257205	775-460
PCB Mounting Kit (10 M3x10 screw pillars)				M5600001	537-1296

341097

Description	Order Code	Price Each			
		1+	5+	10+	25+
Unimet Cases					
Size 2	537-1235				
Size 3	537-1259				
Size 4	537-1272				
Size 5	151-0840				
Size 6	151-0841				

Unimet Cases with Carry Handles

Size 2H	537-1247				
Size 3H	537-1260				
Size 4H	537-1284				
Size 6H	151-0843				

Accessories

Tilt Feet Kit	775-460				
PCB Mounting Kit	537-1296				

METcase Aluminium Enclosure

Unicase



- Four push-in non-slip rubber feet included

- Robust and versatile aluminium instrument enclosures
- Powder epoxy polyester paint finish
- Simple and fast assembly
- Removable internal chassis
- PBC guide rails in the assembly extrusions
- Aluminium front and rear panels included
- Front panels recessed to protect controls

492812



H	External Dimensions		D	Usable Front Panel Area		Order Code
	W	Depth		H ₁	W ₁	
85	230	180	65.1	179.5	930-260	
85	250	250	65.1	199.5	930-271	
85	350	250	65.1	299.5	930-283	
120	230	180	100.1	179.5	930-295	
120	250	250	100.1	199.5	930-301	
120	350	250	100.1	299.5	930-313	
120	250	263	130.1	199.5	930-325	
150	350	263	130.1	299.5	930-337	

203449

Mfrs. List No.	Order Code	Price Each			
		1+	5+	10+	25+
Cases					
M5723107	930-260				
M5725107	930-271				
M5735107	930-283				
M5723207	930-295				
M5725207	930-301				
M5735207	930-313				
M5725317	930-325				
M5735317	930-337				

Front Panel Kits

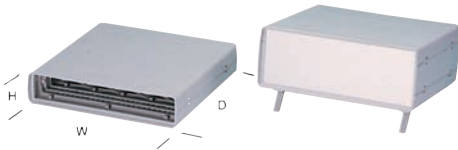
M5700608 for case 85 x 230	930-362				
M5700613 for case 85 x 250	930-374				
M5700618 for case 85 x 350	930-386				
M5700610 for case 120 x 230	930-398				
M5700615 for case 120 x 250	930-404				
M5700620 for case 120 x 350	930-416				
M5700616 for case 150 x 250	930-428				
M5700621 for case 150 x 350	930-430				

Accessories

A9257207 off-white tilt feet kit	775-472				
----------------------------------	---------	--	--	--	--

Panel 'Euro Cases'

ABS



- Stylish and attractive instrument cases in off-white RAL9002 textured ABS
- Supplied with aperture front and rear for aluminium panels
- Strong clip-together assembly with disassembly tools provided
- Internal mounting pillars in top and base for PCBs
- Order aluminium front/rear panels and tilt feet separately

Operating Temperature -40°C to +90°C

	External Dimensions			Front Panel	Mfrs. List No.	Order Code
	H	W	D			
2HE 42TE	98.5	259.99	250.01	—	A0224070	775-344
3HE 42TE	143	259.99	250.01	—	A0234070	775-356
Aluminium Panel for 2HE 42TE				90.7 x 250.8 x 2	A0324270	775-400
Aluminium Panel for 3HE 42TE				132.2 x 250.8 x 2	A0334270	775-411
Tilt foot leg (order 2 per case)					A0350007	775-459

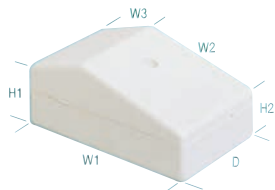
230598

Order Code	Price Each			
	1+	5+	10+	25+
775-344				
775-356				

Eurocases	
775-344	
775-356	
Accessories	
775-400	
775-411	
775-459	

Miniature, Sloping

ABS



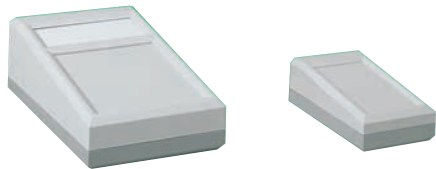
- Highly adaptable case available in black or white
- For desk, pocket or wall mounting
- Cable knockout is provided

External dimensions
H₁=22 H₂=17 W₁=71 W₂=47.5 W₃=27.5
D=44

218885

Colour	Order Code	Price Each				
		1+	25+	50+	100+	500+
Black	223-578					
White	223-580					

Slope Faced Desktop Enclosure



PS

- Two part impact resistant polystyrene construction
- Table top and wall mounting design
- Removable end panel for connectors, indicator etc
- PCB mountings available in lid and base
- Textured lid
- Agate grey/light grey (similar RAL7038/RAL7035) colour
- Supplied with lid fixing screws

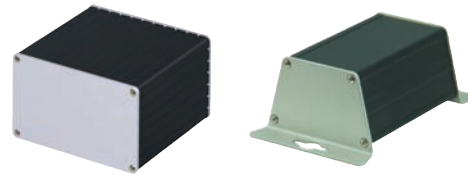
Operating Temperature -40°C to +65°C

External Dimensions				PCB Centres		Display Aperture	Order Code
H ₁	H ₂	W	D	Top	Bottom		
40	28	67	125	85x50	86x48	—	117-7055
45	28	82	150	65x77x42	116x63		117-7056
64	35	112	200	93x88.9	153.7x88.9	87 x 38.4	117-7057

218909

H1	H2	W	D	Order Code	Price Each			
					1+	10+	25+	50+
Without Display Window								
40	28	67	125	117-7055				
With Display Window								
45	28	82	150	117-7056				
64	35	112	200	117-7057				

Minipac Aluminium Cases



Schroff®

NEW

- Handy robust small case - as flexible as your requirements
- Versions as desktop enclosure, for bolting on (e.g. to mounting plate) or mounting on horizontal DIN rails with lip (DIN 41880)
- High heat dissipation through Al case
- Ingress protection to IP 40
- Versatile applications as single-board computer or COM module, e.g. in industry, railway systems, measurement and control systems, data systems or network systems
- Two different designs (trapezoidal and rectangular, for different PCB widths and depths)

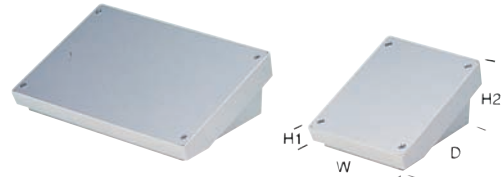
Mfrs. List No.	Style	Colour	Dimensions (mm)			Order Code	Price Each		
			H	W	D		1+	10+	25+

Rectangular										
24814024		Black	60	110.9	160	212-7989				
24814025	Wall Mount	Black	60	110.9	160	212-7990				
24814027	Wall Mount	Silver	60	110.9	160	212-7991				

Trapezoid										
24814008		Black	46.1	74.2 / 53.1	100	212-7992				
24814010	Wall Mount	Black	46.1	74.2 / 53.1	100	212-7993				
24814011	Wall Mount	Silver	46.1	74.2 / 53.1	100	212-7995				
24814014	Rail Mount	Black	46.1	74.2 / 53.1	160	212-7996				

Sloped/Panel - 'Datec Terminal S & SL'

ABS/Aluminium Panel



- Modern, ergonomic, large ABS desktop housing with inclined operating area
- Ideal for small terminals, point of sale, peripherals, data collection and measuring equipment
- Two sizes, in off-white RAL9002, supplied with aluminium front panel
- Size S accepts a single Eurocard, size SL accepts a double Eurocard
- Four non-slip feet provided

Operating Temperature -40°C to +90°C

	External Dimensions			Front Panel	Order Code
	H ₁	H ₂	W		
Size S	24	86	130	126 x 176	774-868
Size SL	24	86	264	259.4 x 176	774-856

230578

Order Code	Price Each			
	1+	5+	10+	25+
Size S	774-868			
Size SL	774-856			

INTELLIGENT ONLINE BUYING SYSTEM PROVIDING

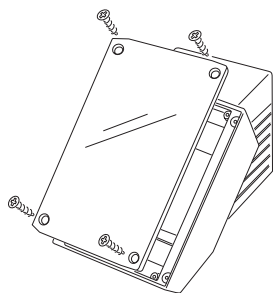
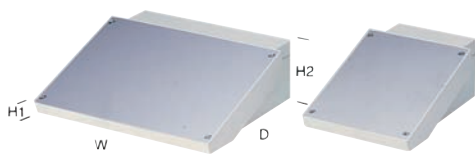
iBuy Complete cost control, reduced administration time, visibility of your spend, flexibility and personalised to your company's needs.

farnell.com/ibuy

Desktop & Instrument Enclosures - continued

Sloped/Panel - 'Datec Terminal M & L'

ABS/Aluminium Panel



- Modern, ergonomic, large ABS desktop housing with inclined operating area
- Ideal for terminals, point of sale, peripherals, data collection and measuring devices
- Two sizes, in off-white RAL9002, supplied with aluminium front panel
- Removable rear lid for access to internal components for set-up and servicing
- Size M accepts a single Eurocard, size L accepts large PCBs and sub-assemblies
- Four non-slip feet provided

Operating Temperature -40°C to +90°C

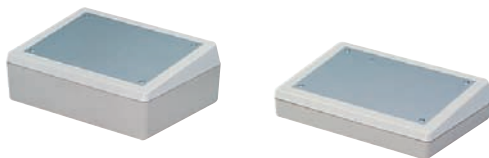
	External Dimensions				Front Panel	Order Code
	H ₁	H ₂	W	D		
Size M	25	272	168	272	165.4 x 217.4	774-844
Size L	25	272	302	272	299.4 x 217.4	774-832

230575

	Order Code	Price Each			
		1+	5+	10+	25+
Size M	774-844				
Size L	774-832				

Sloped/Panel - 'Desk 190'

ABS/Aluminium Panel



- Modern, ergonomic ABS desk cases with top aperture for an aluminium front panel (Not Included)
- Ideal for test and measurement, point of sale, intercom, security and medical devices etc
- Two sizes in off RAL9002/pebble grey RAL7032 colour combination
- Internal mounting pillars in base for PCB's and assemblies

Operating Temperature -40°C to +90°C

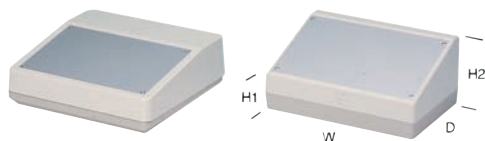
	External Dimensions				Front Panel	Mfrs. List No.	Order Code
	H ₁	H ₂	W	D			
190F	31.5	46.99	189.99	138	106 x 161x1.5	A9086265	775-083
190H	54.5	70	189.99	138	106 x 161x1.5	A9086365	775-095

230579

	Order Code	Price Each			
		1+	5+	10+	25+
190F	775-083				
190H	775-095				
Front Panel For Both	775-125				

Sloped/Panel - 'Desk'

PS/Aluminium Panel



- Stylish high impact polystyrene desk cases with top aperture for an aluminium front panel
- Ideal for test and measurement, point of sale, intercom, security and medical devices etc
- Two types in off-white RAL9002/pebble grey RAL7032 colour combination
- Internal mounting pillars in base for PCBs and assemblies

Operating Temperature -40°C to +80°C

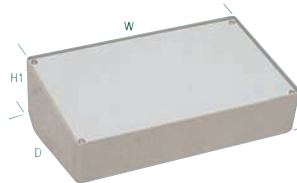
	External Dimensions				Front Panel	Mfrs. List No.	Order Code
	H ₁	H ₂	W	D			
220	52	100	220	156.01	205.5 x 129.4x1.5	A9082065	775-101
Combi	50	76	227.99	216	200 x 130x1.5	A9084165	775-113

230580

	Order Code	Price Each			
		1+	5+	10+	25+
220	775-101				
Combi	775-113				
Front Panel for 220	775-137				
Front Panel for Combi	775-149				

Sloped/Panel - '1000' Series

ABS/Aluminium Panel



- Moulded in grey ABS plastic with aluminium top panel
- PCB guides and bosses provided
- Supplied with four self-adhesive feet

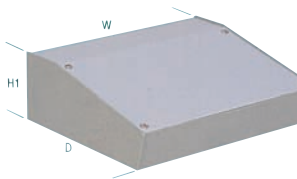
Order Code	W	External Dimensions		Fixing Centres
		D	H ₁	
117-1607	162	97	57	117x62
117-1608	215	130	72	170x85

230572

Order Code		Price Each			
		1+	10+	25+	100+
117-1607					
117-1608					

Sloped/Panel - '6000' Series

ABS/Aluminium



- Small instrument cases moulded in grey ABS with aluminium top panel
- PCB guides and bosses provided
- Ventilation slots are incorporated in the base
- Supplied with four self-adhesive feet

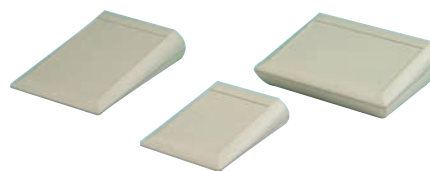
Order Code	W	D	H ₁	H ₂	Fixing Centres
117-1610	170	143	55	31.5	120x115 or 30x140
117-1611	170	214	82	31.5	120x175 or 75x140

230573

Order Code		Price Each		
		1+	10+	25+
117-1609				
117-1610				
117-1611				

'Comtec' Enclosure

ABS



- Very modern keypad cases moulded in off-white ABS
- Inclined top moulding for ergonomic operation of controls
- Recessed area in top for mounting a membrane keypad or product label
- Flat rear panel for connectors, and internal screw pillars for mounting PCB's
- Easy assembly with just two self-tapping screws at the rear
- Four non-slip feet also included in the kit

Operating temperature -40°C to 70°C

Description	Technical Data				Mfrs. List No.	Order Code
	External Dimensions					
	Width	Depth	Min. Height	Max. Height		
120F	119.99	150.01	20	43	A0612007	537-1065
120H	119.99	150.01	20	63	A0612107	537-1077
150F	150.01	200	20	51	A0615007	537-1089
150H	150.01	200	40	71	A0615107	537-1090
200F	200	150.01	20	43	A0620007	537-1107
200H	200	150.01	40	63	A0620107	537-1119

341095

Mfrs. List No.	Order Code	1+	5+	10+	25+
A0612007	537-1065				
A0612107	537-1077				
A0615007	537-1089				
A0615107	537-1090				
A0620007	537-1107				
A0620107	537-1119				

Mfrs. List No.	Order Code	1+	10+	100+	250+	500+
1456KE3WHBU	353-7055					
1456FG4WHBU	353-7067					
1456KG4WHBU	353-7079					
1456KK4WHBU	353-7080					
1456PK4WHBU	353-7092					
1456RK4WHBU	353-7109					

Sloped Consoles - Abox

ABS/Aluminium Panel



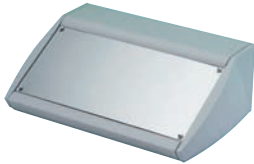
- Sloping front desk top cases moulded in grey ABS
- With 2mm thick natural coloured anodised aluminium panels
- Base mouldings incorporate bosses for mounting PCBs and eurocards
- Can easily be drilled or punched
- Supplied with non-slip push-on PVC feet
- Withstands continuous heat up to 85°C

230574

External Dimensions		Mfrs. List No.	Order Code	1+	10+	25+
H ¹	H ²	W	D			
Without Raised Roof						
62	33	190	120	2801	117-1612	
78	33	267	185	2802	117-1613	
86	35	400	230	2804	117-1615	
With Raised Roof						
118	33	267	185	2803	117-1614	
146	35	400	230	2805	117-1617	

Unidesk Enclosure

IP54 Aluminium

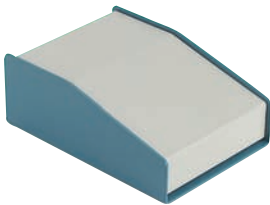


- Modern sloping front instrument cases in three sizes
- Can be sealed to IP54 with gaskets supplied
- Very robust assembly with aluminium die-castings and profiles
- Easy access with removable base and anodised front panel
- Stainless steel fixings screws
- Four non-slip rubber feet included

341098

Mfrs. List No.	Dimensions (mm)				Order Code	1+	5+	10+	25+
	H Min.	H Max.	W	D					
Black									
M5320109	21.6	102	200	200	NEW 189-2761				
M5330109	21.6	102	300	200	NEW 189-2762				
M5340109	21.6	102	400	200	NEW 189-2763				
Grey									
M5320105F	21.6	102	200	200	537-1302				
M5330105F	21.6	102	300	200	537-1314				
M5340105F	21.6	102	400	200	537-1326				

Aluminium Console



- Easy to machine aluminium top and case (2mm thick)
- Case is finished with a textured blue powder paint
- Top panel is finished in a smooth light grey/beige powder paint

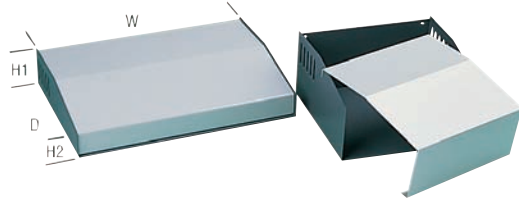
230581

Mfrs. List No.	H ₁	H ₂	W	D	Slope Panel	Order Code
1456CE2WHBU	51	28	101.6	140	84 x 101.6	353-7006
1456FE2WHBU	51	28	165	140	84 x 165	353-7018
1456KH3WHBU	76	33	254	211	160 x 254	353-7020
1456PL3WHBU	76	33	356	287	160 x 356	353-7031
1456FE3WHBU	76	28	165	140	94 x 165	353-7043
1456KE3WHBU	76	28	254	140	94 x 254	353-7055
1456FG4WHBU	102	28	165	183	145 x 165	353-7067
1456KG4WHBU	102	28	254	183	145 x 254	353-7079
1456KK4WHBU	102	28	254	259	145 x 254	353-7080
1456PK4WHBU	102	28	356	259	145 x 356	353-7092
1456RK4WHBU	102	28	432	259	145 x 432	353-7109

Mfrs. List No.	Order Code	1+	10+	100+	250+	500+
1456CE2WHBU	353-7006					
1456FE2WHBU	353-7018					
1456KH3WHBU	353-7020					
1456PL3WHBU	353-7031					
1456FE3WHBU	353-7043					

Sloped Console

Steel



- Attractively styled cases with mild steel base and sides, aluminium top panel
- Back panel is an integral part of base plate
- Connectors may be mounted on back panel and remain undisturbed when lid is removed
- Usuable length of sloped panel is 100mm on all models

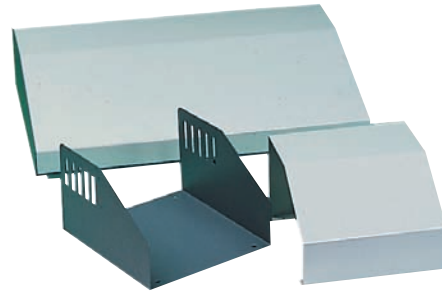
External Dimensions		Sloped Panel		Order Code	
H ₁	H ₂	W	D	Light/Dark Grey	
54	34	178	178	177 x 100	722-443
96	80	190	178	190 x 100	722-455
54	34	297	199	295 x 100	722-467

230582

Mfrs. List No.	Order Code	1+	10+	25+
Light/Dark Grey				
500-0930	722-443			
500-0940	722-455			
500-0950	722-467			

Sloped Console

Steel



- Robust console cases finished in two-tone grey acrylic paint
- Steel base plate and side panels. Integral top and back panel
- Ventilation slots provided on both side panels
- Supplied with self-adhesive rubber feet
- Ideal for small consoles and power supplies

External Dimensions		Sloped Panel		Order Code
H ₁	H ₂	W	D	
54	32	114	152	722-406
96	74	188	152	722-418
96	50	348	175	722-431

230585

Mfrs. List No.	Order Code	1+	10+	25+
515-0910	722-406			
515-0940	722-418			
519-0920	722-431			

The first online technical portal for design engineers
Log on, research, refine and design

Desktop & Instrument Enclosures - continued

218850

Small Instrument

Steel



- Mild steel cases coated in two tone stove enamel paint
- Cowl type cover reduces glare from overhead lighting
- Cooling vents in cover make them ideal for power supplies, controllers, meters etc.

External Dimensions			Material Thickness		Dark Grey/Light Grey Order Code
H	W	D	Top Cover	Base	
51	76	133	0.91 (20 SWG)	1.22 (18 SWG)	518-852
70	92	178	0.91 (20 SWG)	1.22 (18 SWG)	518-864
89	121	219	0.91 (20 SWG)	1.22 (18 SWG)	518-876

218889

Price Each

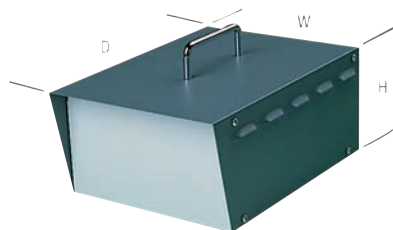
Mfrs. List No.	Order Code	1+	10+	25+	100+
----------------	------------	----	-----	-----	------

Dark Grey/Light Grey

512-0900	518-852				
511-0900	518-864				
513-0900	518-876				

Instrument

Steel



- Two part mild steel cases for portable or bench top equipment
- Top cover provides protection for front and rear panels
- Ventilation louvres on sides aid cooling

External Dimensions			Material Thickness		Handle Height	Dark Grey/Light Grey Order Code
H	W	D	Top Cover	Base		
121	197	281	1	1.2	37	518-888
159	298	245	1	1.2	37	518-890

218890

Price Each

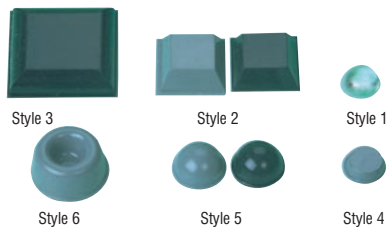
Mfrs. List No.	Order Code	1+	10+	25+	100+
----------------	------------	----	-----	-----	------

518-0910	518-888				
518-0920	518-890				



Enclosure Accessories

Stick On Feet 'Bumpon'TM



- Durable, skid-resistant polyurethane moulding
- Easy attachment with pressure sensitive adhesive
- Non-marking, non-slip resistant to most solvents.

Order Code	Mfrs. List No.	H	Dia.	Colour	Style
116-5067	SJ5302TRANS	2.2	7.9	Transparent	1
116-5068	SJ5306TRANS	3.8	9.5	Transparent	1
116-5071	SJ5303TRANS	5	11.1	Transparent	1
116-5063	SJ5312TRANS	3.5	12.7	Transparent	1
116-5072	SJ5008BLACK	3.1	12.7 x 12.7	Black	2
202-0512	SJ5018BLACK	5.8	12.7 x 12.7	Black	2
116-5064	SJ5018GREY	5.8	12.7 x 12.7	Grey	2
116-5079	SJ5023BLACK	7.6	x	Black	2
116-5080	SJ5023GREY	7.6	20.6 x 20.6	Grey	2
116-5081	SJ5075BLACK	6.1	31.75 x 31.75	Black	3
116-5061	SJ5076BLACK	2.8		Black	4
116-5073	SJ5012BLACK	3.5	12.7	Black	4
116-5083	SJ5780BLACK	5.5	20	Black	4
116-5074	SJ5003BLACK	5	11.1	Black	5
116-5075	SJ5003GREY	5	11.1	Grey	5
116-5076	SJ5027BLACK	7.9	16	Black	5
116-5077	SJ5027GREY	7.9	16	Grey	5
116-5078	SJ5017BLACK	9.6	19	Black	5
116-5065	SJ5009GREY	10.1	22.3	Grey	6

Quantity Per Pack	Order Code	Price Per Pack		
		1+	10+	25+
144	116-5067			
48	116-5068			
56	116-5071			
56	116-5063			
80	116-5072			
80	202-0512			
80	116-5064			
36	116-5079			
36	116-5080			
	206-6951			
56	116-5061			
56	116-5073			
24	116-5083			
56	116-5074			
56	116-5075			
40	116-5076			
40	116-5077			
40	116-5078			
48	116-5065			

Instrument Case Feet



Screw Fixing



Type 1

Type 2

- Type 1 - Soft rubber feet. Ideal for use on instrument cases etc.
- Type 2 - Moulded in hard rubber. Bracing members prevent pull-through of fastening screw

218852

H	Dia.	Mtg. Hole Dia.	Order Code	Price Per Pack			
				1+	5+	10+	25+
Type 1							
10	15.9	1.6	320-237				
10	19.1	3.5	320-249				
10	22.2	3.5	320-250				
Type 2							
12.5	37.5	5.5	606-017	1+	5+	10+	25+

Tilt Feet - General Purpose



- Tilt feet kits suitable for all types and makes of plastic and metal enclosures
- Three colours moulded in ABS. Foot height 16mm (inc. insert)
- Kit comprises 4 foot mouldings, 4 rubber non-slip inserts, 2 tilt legs, 4 fixing screws and a drilling template

Operating temperature -40C to 90C

224467

Mfrs. List No.	Colour	Order Code	Price Per Pack			
			1+	5+	10+	25+
A9257205	Grey RAL7035	775-460				
A9257207	Off White RAL9022	775-472				
A9257209	Black RAL9005	775-484				

FREE GLOBAL LEGISLATION SUPPORT



RoHS, REACH, WEEE, ErP, Batteries Directive - latest updates, free white papers and live online Q&A at element14.com/legislation