

Enclosures - Electronic

	Page		Page
Desktop & Instrument Enclosures	1897	Potting Boxes	1877
Enclosure Accessories	1903	Project & General Purpose Enclosures	1879
Hand-Held Enclosures	1892	Screening Cans.....	1897
Plug In & DIN-Rail Mount	1890	Wall Mount Enclosures	1896

Potting Boxes

	ABS	Polystyrene (PS)	Polycarbonate (PC)	Polyester (GRP)	Aluminium (Diecast)	Steel (Painted)
Outdoor Use	●	●●	●●●●	●●●●●●	●●●●	●●●
Ease of machining	●●●●●	●●●	●●●●●	●●	●●	●●
Temperature Range	●●●	●●●	●●●●	●●●●	●●●	●●●●
Light weight	●●●●●	●●●●●	●●●●●	●●●	●●	●
High Rigidity	●	●	●●●	●●●●	●●●●●	●●●●
Impact Resistant	●●●	●●	●●●●	●●●●	●●●●	●●●●
Chemical Resistance						
■ Salt Water	●●	●●	●●●●●	●●●●●	If Coated	●●
■ Acid (mild)	●●●●	●●●●	●●●●	●●●●	●●●	●●
■ Alkali (mild)	●●●●	●●●●	●●●●	●●●●	●	●●
■ Hydraulic Oil	●	●	●●●	●●●●●●	●●●●●	●●
■ Petroleum	●●●●●	●●●●●	●●●●●	●●●●●	●●●●●	●●
■ Alcohol	●●●	●●●	●●●●	●●●●	●●●●●	●●
■ Solvents	●	●	●	●●●●	●●●●●	●●
■ Coolants	●●●●	●●●●●	●●●	●●●●●	●●●	●●
This table represents only standard values and is designed as a guide. Appropriate preliminary tests are therefore recommended. No responsibility can be accepted for the accuracy of the specifications.					Key ●●●●● = Excellent ● = Poor	

IP Explanation and Ratings

EN 60529 outlines an international classification system for the sealing effectiveness of enclosures of electrical equipment against the intrusion into the equipment of foreign bodies (i.e. tools, dust, fingers) and moisture. This classification system utilizes the letters "IP" ("Ingress Protection") followed by two or three digits. (A third digit is sometimes used. An "x" is used for one of the digits if there is only one class of protection; i.e. IPX4 which addresses moisture resistance only.)

FIRST NUMBER - Degrees of Protection

The first digit of the IP code indicates the degree that persons are protected against contact with moving parts (other than smooth rotating shafts, etc.) and the degree that equipment is protected against solid foreign bodies intruding into an enclosure.

Protection against solids

IP 0 no protection

- 1 protected against solid objects up to 50 mm (e.g. accidental touch by hands)
- 2 protected against solid objects up to 12mm (e.g. fingers)
- 3 protected against solid objects over 2.5mm (tools and small wires)
- 4 protected against solid objects over 1mm (tools and small wires)
- 5 protected against dust - limited ingress permitted (no harmful deposit)
- 6 totally protected against dust

SECOND NUMBER - Degrees of Protection

The second digit indicates the degree of protection of the equipment inside the enclosure against the harmful entry of various forms of moisture (e.g. dripping, spraying, submersion, etc.)

Protection against liquids

IP 0 no protection

- 1 protected against vertically falling drops of water
- 2 protected against direct sprays of water up to 15° from the vertical
- 3 protected against sprays up to 60° from the vertical
- 4 protected against water sprayed from all directions - limited ingress permitted
- 5 protected against low pressure jets of water from all directions - limited ingress permitted
- 6 protected against strong jets of water - limited ingress permitted
- 7 protected against the effects of immersion between 15cm and 1m
- 8 protection against long periods of immersion under pressure

THIRD NUMBER

Protection against mechanical impacts (commonly omitted)

IP 0 No protection.

- 1 Protects against impact of 0.225 joule (e.g. 150g weight falling from 15cm height).
- 2 Protected against impact of 0.375 joule (e.g. 250g weight falling from 15cm height).
- 3 Protected against impact of 0.5 joule (e.g. 250g weight falling from 20cm height).
- 4 Protected against impact of 2.0 joule (e.g. 500g weight falling from 40cm height).
- 5 Protected against impact of 6.0 joule (e.g. 1.5kg weight falling from 40cm height).
- 6 Protected against impact of 20.0 joule (e.g. 5kg weight falling from 40cm height).

448025

Potting (with fixing lugs)

ABS



- Low cost grey potting box

Mfrs. List No.	Dimensions (mm)			Order Code
	H	W	D	
GPL05	19	24	36	645-643
GPL1	24	30	50	301-152
GPL2	27	42	55	301-164

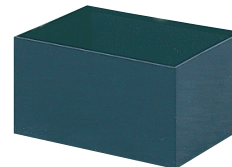
224365

Price Each

Mfrs. List No.	Order Code
GPL05	645-643
GPL1	301-152
GPL2	301-164

Potting

ABS



- Low cost, black potting box

Mfrs. List No.	Dimensions (mm)			Order Code
	H	W	D	
PB1	15	30	20	301-176
PB2	20	40	40	301-188
PB3	30	50	50	301-190
PB4	35	70	50	301-206
PB5	25	100	50	301-218

224366

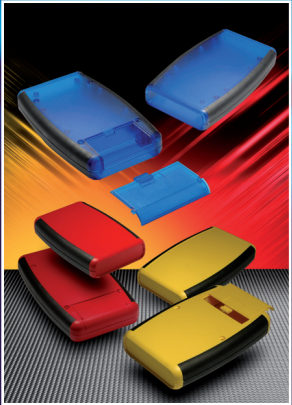
Price Each

Mfrs. List No.	Order Code
PB1	301-176
PB2	301-188
PB3	301-190
Order Multiple=5	
PB4	301-206
PB5	301-218

Over 500 000 products available online



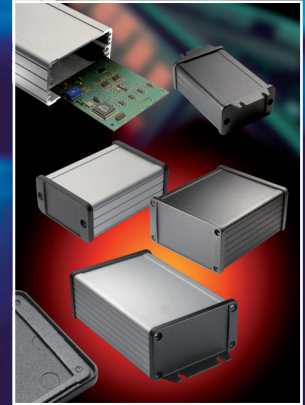
Die-cast aluminium, metal and plastic enclosures



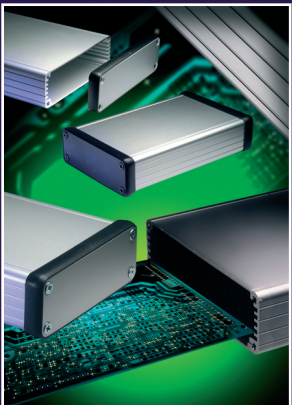
- 1553 soft sided**
- with or without battery box
 - removable front panel
 - membrane keyboard recess



- 1555F heavy duty sealed**
- ABS and polycarbonate
 - wall or bulkhead mounting
 - sealed to IP67



- 1457 rugged sealed**
- extruded aluminium
 - plain or flanged panels
 - sealed to IP65



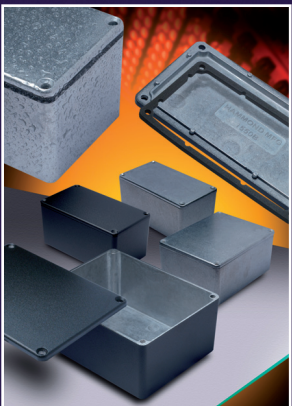
- 1455 extended range**
- extruded aluminium
 - integral PCB slots
 - metal or plastic end panels



- 1551 miniature general purpose**
- rectangular and square
 - sealed to IP54
 - flanged and plain lids



- 1591 general purpose ABS**
- plain or flanged lid
 - integral PCB slots
 - tapped inserts



- 1550 industry standard sizes**
- die-cast aluminium
 - natural or black finish
 - IP54 and IP66 versions



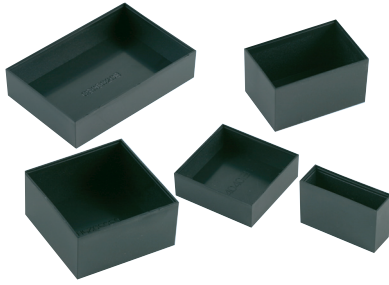
- 1590 die-cast aluminium**
- plain or flanged lid
 - standard or waterproof
 - plain or painted finish



- 1550Z heavy duty die-cast**
- rugged thick wall
 - natural or black finish
 - sealed to IP66

Potting Boxes

ABS Potting Boxes



- A range of low cost boxes are for encapsulating electronic assemblies
- Enclosures are made from rigid ABS with a flammability rating of **UL-94HB**
- Operating temperature is between -20°C to +60°C
- All enclosures are finished in Black
- Lids are available for all enclosures listed

Dimensions (mm)				Box	Lid
L	W	D	Weight	Order Code	Order Code
20	20	13	0.06kg	109-4644	109-4668
25	25	15	0.11kg	109-4648	109-4669
25	25	25	0.157kg	109-4649	109-4669
30	20	15	0.109kg	109-4650	109-4670
40.5	13.5	25	0.175kg	109-4652	109-4672
40	40	13	0.202kg	109-4653	109-4673
40	40	20	0.248kg	109-4654	109-4673
45	30	15	0.180kg	109-4655	109-4674
45	30	25	0.245kg	109-4656	109-4674
50	50	25	0.461kg	109-4661	109-4676
70.5	50.5	20	0.645kg	109-4663	109-4677
70.5	50.5	35	0.876kg	109-4664	109-4677
90	60	20	0.879kg	109-4665	109-4678
100	50	25	0.927kg	109-4666	109-4679
100	100	40	2.672kg	109-4667	109-4680

342005

Mfrs. List No.	Order Code	Price Each
Enclosures		
G202013B	109-4644	
G252515B	109-4648	
G252525B	109-4649	
G302015B	109-4650	
G401325B	109-4652	
G404013B	109-4653	
G404020B	109-4654	
G453015B	109-4655	
G453025B	109-4656	
G505025B	109-4661	
G705020B	109-4663	
G705035B	109-4664	
G906020B	109-4665	
G1005025B	109-4666	
G10010040B	109-4667	
Lids		
G202013L	109-4668	
G252515L	109-4669	
G302015L	109-4670	
G401316L	109-4672	
G404013L	109-4673	
G453015L	109-4674	
G505015L	109-4676	
G705020L	109-4677	
G906020L	109-4678	
G1005025L	109-4679	
G10010040L	109-4680	

Project & General Purpose Enclosures

ABS 1591S Series IP54



- Economical black ABS box ideally suited for mounting PC boards
- Includes vertical card guides
- Two piece lap joint construction provides protection against dust and splashing water (IP54)
- Lid is secured with self-tapping screws
- No "gate" marks on bottom of enclosure

230583

Mfrs. List No.	Dimensions (mm)			Order Code	Price Each
	H	W	D		
1591LSBK	85	56	39	142-6570	
1591ASBK	100	50	25	142-6571	
1591BSBK	112	62	31	142-6572	
1591CSBK	120	65	40	142-6573	
1591DSBK	150	80	50	142-6574	
1591ESBK	191	110	61	142-6575	
1591GSBK	121	94	34	142-6577	
1591MSBK	85	56	25	142-6579	
1591SSBK	110	82	44	142-6580	
1591TSBK	120	80	59	142-6581	
1591USBK	120	120	59	142-6582	
1591VSBK	120	120	94	142-6583	

Miniature ABS (Impact Resistant)



- Can easily be drilled or punched
- Lid retained by four self-tapping screws

230584

Mfrs. List No.	Dimensions (mm)			Order Code	Price Each
	H	W	D		
Black					
T2	25	75	56	645-655	
T3	27	75	51	301-449	
HBT4	24	113	59	536-8637	
White					
T2W	75	56	25	645-667	
T3W	27	75	51	301-450	
Grey					
T3G	27	75	51	301-462	

Miniature - 'RX Range' ABS



- Finished in matt black
- Lid retained by four black No 2 self-tappers

203461

Mfrs. List No.	Dimensions (mm)			Order Code	Price Each
	H	W	D		
Order Multiple=5					
RX2004/S	14	21	29	117-1581	
RX2KL05	16	24	49	117-1589	
RX2KL06	18	28	58	117-1590	
RX2KL07	20	32	67	117-1591	
RX2005/S	16	24	34	117-1582	
RX2006/S	18	28	40	117-1583	
RX2007/S	20	32	46	117-1584	
RX2008/S	23	38	54	117-1585	
RX2009/S	25	44	64	117-1587	
RX2010/S	28	50	74	117-1588	

FREE technical support

Our trained engineers are here to help!

- See inside front cover
- See inside front cover
- www.element14.com

Project & General Purpose Enclosures - continued

FOR MORE INFORMATION & CHOICE

Product Search

Grip-Tech



RoHS Compliant Items Only | [Advanced Search](#)

Miniature

ABS



H = 25, W = 73, D = 51

- Can easily be punched or drilled
- Finished in matt as standard. Lid retained by self tapping screws

230586

Mfrs. List No.	Colour	Order Code	Price Each
HBT3	Black	645-680	
HBT3W	White	645-692	

Multipurpose (PCB Guides)

ABS (Impact Resistant)



- Wide range of multipurpose boxes
- Integral PCB guides (except 301-292, 301-371 and 645-722)
- Lid retained by M3.5 screws into brass inserts

230592

Mfrs. List No.	Dimensions (mm)			Finish	Order Code	Price Each
	H	W	D			
Black						
MB1	40	79	61	Gloss	301-243	
MB2	41	100	76	Gloss	301-255	
MB3	45	118	98	Gloss	301-267	
MB4	85	216	130	Matt	301-279	
MB5	60	150	100	Gloss	301-280	
MB6	64	220	150	Matt	301-292	
MB7	83	177	120	Matt	301-309	
MB8	50	150	80	Gloss	301-310	
White						
MB1W	40	79	61	Gloss	301-322	
MB2W	41	100	76	Gloss	301-334	
MB3W	45	118	98	Gloss	301-346	
MB4W	85	216	130	Matt	301-358	
MB5W	60	150	100	Gloss	301-360	
MB6W	64	220	150	Matt	301-371	
MB7W	83	177	120	Matt	301-383	
MB8W	50	150	80	Gloss	301-395	
Grey						
MB1G	40	79	61	Gloss	301-401	
MB2G	41	100	76	Gloss	301-413	
MB3G	45	118	98	Gloss	301-425	
MB4G	85	216	130	Matt	645-710	
MB5G	60	150	100	Gloss	301-437	
MB6G	64	220	150	Matt	645-722	
MB7G	83	177	120	Matt	645-795	
MB8G	50	150	80	Gloss	645-709	

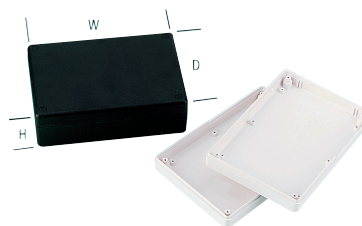
Express checkout



With no need to re-enter your details, returning customers can now buy products even faster - **order online today at www.element14.com**

Multipurpose - 'Adaptable' (PCB Guides)

ABS



- Attractive matt finish
- Vertical PCB guides and bosses moulded in lid and base of box
- Lid screws can be inserted from either side and can be hidden by matching covers

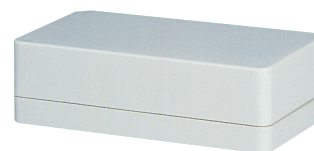
Mfrs. List No:	AB77=938-853	AB78=938-865	AB88=938-877
	AB77W=938-889	AB78W=938-890	AB910W=536-8716

224368

External Dimensions				Price Each
H	W	D	Order Code	
Black				
178	122	36	938-853	
178	122	55	938-865	
178	122	74	938-877	
White				
178	122	36	938-889	
178	122	55	938-890	
65	240	190	536-8716	

Multipurpose (PCB Guides)

ABS



- Polished white finish
- Lid retained by 4 3.5mm countersunk plated screws into brass inserts
- PCB slots provided in base of 531-868 and in both halves of 531-870

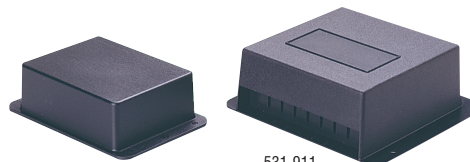
External Dimensions			Wall Thickness	Order Code
H	W	D	(nom.)	
143	82	30	3	531-856
143	82	44	3	531-868
143	82	58	3	531-870

230605

Mfrs. List No.	Order Code	Price Each
BM11W	531-856	
BM12W	531-868	
BM22W	531-870	

Flanged

ABS (Impact Resistant)



301-220/231

531-911

301-220, 301-231

- Bases are loose fitted, secured when box is fitted to a panel or bulkhead
- Alternatively, base may be riveted to box flange to form **tamper proof** enclosure

531-911

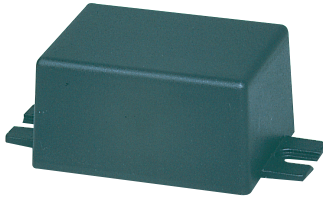
- Surface mounting box in black ABS with separate self-locking base
- Seven numbered slots provided for wires or 0.25" PCB mounting blades
- Raised panel provided for labels

External Dimensions							Mfrs. List No.
H	W	D	Base	Fixing Holes	Fixing Centres	Finish	
84	72	32	105 x 71	2	95 x 5 dia	Matt	PBL2
84	64	46	115 x 64	6	42 x 100 x 4 dia	Matt	PBL3
42	95	100	112 x 120	3	84 x 108 x 5 dia	Matt	PBL7

218851

Mfrs. List No.	Order Code	Price Each
PBL2	301-220	
PBL3	301-231	
PBL7	531-911	

Flanged ABS



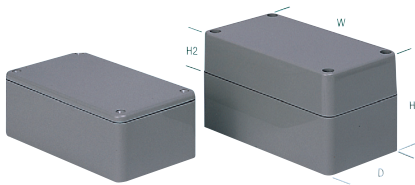
- Multipurpose, low-cost moulded black ABS
- Slotted fixing lugs
- Base intended as interference fit, but can be glued
- Easily punched or drilled

External Dimensions			Wall Thickness	Order Code
H	W	D	(nom.)	
42	42	40	2.5	531-881
34	66	50	2.5	531-893
31	58	58	2.5	531-900

230654

Mftrs.	Price Each
List No.	Order Code
PBL04	531-881●
PBL06	531-893●
PBL1	531-900●

Multipurpose '2000 Series' (PCB Guides) ABS



- ABS boxes with shallow or deep lids
- Heat resistant to 85°C
- PCB mounting slots on all sides for 1.5mm thick boards
- Close fitting flanged lid

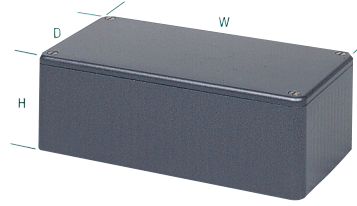
Mftrs List No.	W	H1	D	Deep Lid	W	H1	H2	D
BIM 2000/10/GY	50	27	75	BIM 2005/25/GY/GY	80	76	30	80
BIM 2001/11/GY	56	39	85	BIM 2006/26/GY/GY	110	90	34	110
BIM 2002/12/GY	50	25	100					
BIM 2003/13/GY	62	31	112					
BIM 2004/14/GY	65	40	120					
BIM 2005/15/GY	80	50	150					
BIM 2006/16/GY	110	60	190					
BIM 2008/18/GY	55	42	55					
BIM 2009/19/GY	200	64	250					
BIM 2030/30/GY	80	30	142					

231166

Colour	Mftrs. List No.	Order Code	Price Each
Standard			
Grey	BIM 2000/10/GY	117-1676●	
Grey	BIM 2001/11/GY	117-1678●	
Grey	BIM 2002/12/GY	117-1679●	
Grey	BIM 2003/13/GY	117-1681●	
Grey	BIM 2004/14/GY	117-1682●	
Grey	BIM 2005/15/GY	117-1684●	
Grey	BIM 2006/16/GY	117-1686●	
Grey	BIM 2008/18/GY	117-1688●	
Grey	BIM 2009/19/GY	117-1691●	
Grey	BIM 2030/30/GY	117-1692●	
Deep Lid			
Grey	BIM 2005/25/GY/GY	117-1685●	
Grey	BIM 2006/26/GY/GY	117-1687●	

RFI/EMI Shielded - '2000 Series' (PCB Guides) CAMDENBOSS

ABS (Impact Resistant)

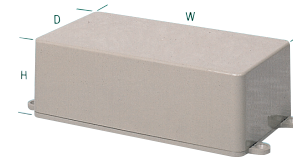


- High impact resistant dark grey ABS, internally coated with nickel acrylic
- Internally moulded vertical PCB guides
- Supplied with supports for horizontal PCB mounting

218887

External Dimensions	Mftrs.	Order Code	Price Each
H x W x D(mm)	List No.	Code	
42 x 55 x 55	BIM 2008/18/EMI/RFI	117-1600●	
27 x 50 x 75	BIM 2000/10/EMI/RFI	117-1592●	
39 x 56 x 85	BIM 2001/11/EMI/RFI	117-1593●	
25 x 50 x 100	BIM 2002/12 EMI/RFI	117-1594●	
31 x 62 x 112	BIM 2003/13 EMI/RFI	117-1595●	
40 x 65 x 120	BIM 2004/14 EMI/RFI	117-1596●	
50 x 80 x 150	BIM 2005/15 EMI/RFI	117-1597●	
60 x 110 x 190	BIM 2006/16 EMI/RFI	117-1599●	

Flanged '2000' Series ABS



- Flanged ABS boxes with integral PCB guides
- Flanges are moulded on the lid which is retained by four M3 screws
- Supplied with screws and PCB supports

Series	H	W	D
2003	31	62	132
2004	40	65	140
2005	50	80	172

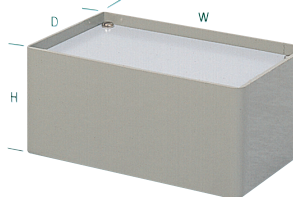
230656

Colour	Mftrs. List No.	Order Code	Price Each
Grey	BIM 2003/13LUG-GY	117-1651●	
Black	BIM 2003/13LUG BLK	117-1650●	
Grey	BIM 2004/14LUG-GY	117-1655●	
Black	BIM 2004/14LUG BLK	117-1652●	
Grey	BIM 2005/15LUG-GY	117-1657●	
Black	BIM 2005/15LUG BLK	117-1656●	

Multipurpose - '4000 Series' (PCB Guides) CAMDENBOSS



ABS (Aluminium Panel)



- Moulded in grey ABS with aluminium top panel
- Internally moulded PCB guide slots

219612

External Dimensions	Mftrs.	Order Code	Price Each
H x W x D(mm)	List No.	Code	
35 x 56 x 85	BIM 4003-GY/PG	117-1603●	
48 x 71 x 111	BIM 4004-GY/PG	117-1605●	
59 x 96 x 161	BIM 4005-GY/PG	117-1606●	

REACH - SVHCs



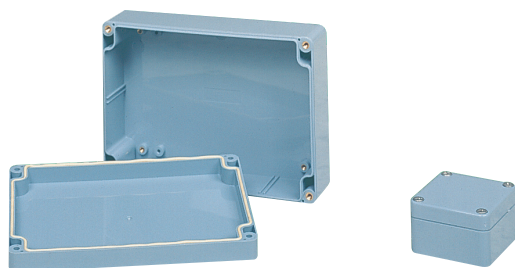
We've checked over 200,000 products for Substances of Very High Concern under REACH and are continuing to check more every day. Easily identify these products online and access supporting safety datasheets when you see this logo. Visit www.element14.com to stay up-to-date.

Express checkout



With no need to re-enter your details, returning customers can now buy products even faster - order online today at www.element14.com

Multipurpose
IP65, ABS



- Easily drilled or punched
- Tongue and groove sealing system with neoprene gasket
- Operating temperature range -20°C to +80°C

218904

External Dimensions				Order Code	Price Each
H	W	D1	D2		
50	52	25	10	117-5794	
58	64	25	10	109-4697	
65	115	25	15	109-4698	
65	115	40	15	109-4699	
80	82	40	15	117-5795	
80	195	45	10	109-4706	
90	115	40	15	109-4700	
90	115	65	15	109-4704	
120	120	30	30	117-5800	
120	120	60	30	117-5801	
121	171	40	15	109-4702	
121	171	40	40	109-4705	
146	222	40	15	109-4703	
146	222	40	35	109-4707	
160	80	40	15	117-5796	
160	240	75	15	152-6644	
160	240	75	45	152-6645	
160	160	30	30	117-5802	
160	160	60	30	117-5803	
185	265	75	20	152-6643	
200	120	60	15	117-5799	
230	300	56	30	152-6646	
230	300	56	55	152-6647	
200	360	100	50	152-6648	

Multipurpose
ABS and Polycarbonate



- Designed to IP65 NEMA 4 specification.
- Wall mounting holes and cover attaching screws are outside the sealing area thus preventing ingress of moisture and dust.
- Internal bosses allow mounting of PCB horizontally or connection of terminals etc. into threaded inserts.

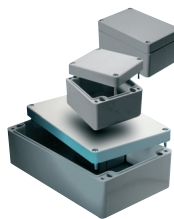
- Cover screws are M 4 stainless steel, non-magnetic and fasten into thread brass inserts.
- Recessed area on cover for sticking membrane keyboard.
- ABS in dark grey cover and lid
- Polycarbonate in light grey cover and lid

499210

External Dimensions (mm)				Mftrs. List No.	Order Code	Price Each
H	W	D				
ABS						
55	100	100	G3101	152-6651		
90	100	100	G3103	152-6652		
55	120	80	G3107	152-6653		
85	120	80	G3109	152-6654		
60	240	120	G3118	152-6656		
100	240	120	G3121	152-6657		
55	200	150	G3122	152-6658		
75	200	150	G3127	152-6659		
121.5	353	140	G3130	152-6660		
55	190	190	G3125	152-6661		
Polycarbonate						
55	100	100	G2100	152-6663		
55	120	80	G2104	152-6665		
100	240	120	G2117	152-6669		
55	200	150	G2119	152-6670		
75	200	150	G2120	152-6671		
55	190	190	G2135	152-6673		

Watertight Enclosures

Polyester, ABS and Polycarbonate



- Light grey - RAL 7035.
- Design includes a gasketed lid with two piece "tongue and groove" construction.
- Styled lid version has recessed surface on lid for membrane keypad or label
- UL Flammability rating of UL94-HB.
- Designed to meet IP Regulations.
- Includes internal mounting nuts moulded into box and self captivated lid screws.

346109

Dimensions (mm)		Mftrs. List No.	Order Code	Price Each
H	W			
Polyester - IP65				
80	75	55	1590ZGRP081	762-6339
110	75	55	1590ZGRP082	762-6347
160	75	55	1590ZGRP083	762-6363
160	160	90	1590ZGRP161	762-6371
220	120	90	1590ZGRP123	762-6380
260	160	90	1590ZGRP162	762-6398
ABS, Flat Lid - IP66				
40	65	65	1554BGY	408-0750
60	90	90	1554EGY	408-0865
40	65	120	1554CGY	408-0786
60	65	120	1554DGY	408-0828
60	90	120	1554FGY	408-0919
80	90	120	1554GGY	408-0956
60	120	120	1554NGY	408-1109
80	120	120	1554PGY	408-1146
60	90	160	1554JGY	408-1020
90	90	160	1554KGY	408-1067
90	160	160	1554SGY	408-1213
60	160	160	1554RGY	408-1171
60	120	180	1554HGY	408-0981
90	120	180	1554TGY	408-1250
90	120	200	1554UGY	408-1304
90	160	240	1554VGY	408-1353
ABS, Styled Lid - IP66				
80	90	120	1555GGY	100-9489
90	90	160	1555KGY	100-9490
90	120	200	1555UGY	100-9491
Polycarbonate - IP65				
60	90	90	1554E2GY	408-0890
40	65	120	1554C2GY	408-0804
60	65	120	1554D2GY	408-0830
60	90	120	1554F2GY	408-0932
60	120	120	1554N2GY	408-1122
60	90	160	1554J2GY	408-1043
60	160	160	1554R2GY	408-1195
60	120	180	1554H2GY	407-9334
90	120	180	1554T2GY	408-1274
90	120	200	1554U2GY	408-1328
90	160	240	1554V2GY	408-1377

NEW! Improved back-order delivery service



Receive e-mail updates with the exact status of the delivery, due date and despatch information of all your back-order items.

www.element14.com

ABS Miniature - '1551' Series



- Ideally suited for mounting printed circuit boards
- 2 PCB stand-offs moulded into interior
- Two piece lap joint construction provides protection against dust accumulation and splashing water (IP54)
- Satin-textured finish, assembles with two self-tapping screws

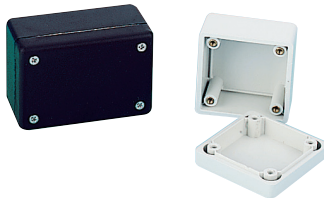
230615

Mfrs.	External Dimensions			Mfrs.	Price Each
List No.	L	W	D	Part No.	Order Code
Black					
1551NBK	35	35	15	100-9496	●
1551MBK	35	35	20	100-9499	●
1551QBK	40	40	15	100-9501	●
1551PBK	40	40	20	100-9504	●
1551GBK	50	35	20	353-6415	●
1551RBK	50	50	20	100-9510	●
1551HBK	60	35	20	353-6427	●
1551LBK	80	40	15	100-9514	●
1551KBK	80	40	20	353-6439	●
Key Ring Kit (19mm dia.)					
1427KR				353-6476	●

Multipurpose - '1594 Series' (High Impact)



IP54/IP65/Shielded, ABS (Flame Retardant)



- Rugged electronic instrument boxes, ideal for mounting PCBs
- 3mm thick walls allow box to be used in harsh environments
- Flammability rating of **UL94V-0**

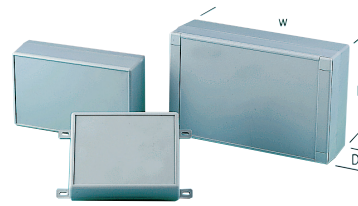
230616

External Dimensions	Mfrs.			Price Each	
	H	W	D		Part No.
IP54 Black					
56	56	40	1594ABK	722-741	●
56	81	40	1594BBK	722-765	●
66	105	45	1594CBK	722-789	●
66	131	55	1594DBK	722-807	●
107	167	65	1594EBK	722-820	●
IP54 Grey					
56	56	40	1594AGY	722-753	●
56	81	40	1594BGY	722-777	●
66	105	45	1594CGY	722-790	●
66	131	55	1594DGY	722-819	●
107	167	65	1594EGY	722-832	●
IP65 Black					
56	56	40	1594AWBK	722-844	●
56	81	40	1594BWBK	722-856	●
66	105	45	1594CWBK	722-868	●
66	131	55	1594DWBK	722-870	●
107	167	65	1594EWBK	722-881	●
Accessories					
Black Belt Clip, Black			1599CLIP	353-6282	●
Grey Belt Clip, Grey			1599CLIPGY	353-6294	●

Multipurpose - 'Series 7000' (PCB Guides)



IP54, ABS (Impact Resistant)



- Aesthetically pleasing: screw fixings are hidden behind plastic covers
- Keypad area of different sizes is provided on base and lid
- Guides for PCB in vertical mode are incorporated in base and lid together with 5mm high bosses for horizontal fixing
- Some models can be sealed to IP65 with an optional neoprene gasket

- Optional wall mounting kit available

230617

External Dimensions(mm)		Mfrs.	Price Each	
H x W x D	Size	List No.	Order Code	
Boxes				
25 x 55 x 90	1	BIM 7001/11	117-1633	●
40 x 55 x 90	2	BIM 7002/12	117-1634	●
35 x 85 x 110	3	BIM 7003/13	117-1635	●
30 x 75 x 127	4	BIM 7004/14	117-1636	●
45 x 75 x 127	5	BIM 7005/15	117-1637	●
45 x 90 x 145	6	BIM 7006/16	117-1638	●
60 x 120 x 190	7	BIM 7007/17	117-1639	●
50 x 145 x 220	8	BIM 7008/18	117-1642	●
80 x 145 x 220	9	BIM 7009/19	117-1643	●
Gaskets				
	1 & 2	BIM712	939-006	
	6	BIM706	939-031	
	8 & 9	BIM789	939-055	
				Price Per Set
Wall Mounting Kit - (set of 4)			117-1644	●

Weatherproof Enclosure



UL 94 HB, Polycarbonate or ABS



- Weatherproof enclosures available in ABS or polycarbonate
- Designed to meet IP65
- Flame retardant according to **UL94 HB**
- Polycarbonate in Off White, ABS in Light Grey, colour
- Gasketed lid with two piece "tongue & groove" construction
- Rubber gasket is included and must be field installed
- Internal DIN rail mounting tabs
- All fixings supplied
- All styles have a recessed area in the top covers for labels, membrane keypads etc.
- Wall mounting kit available

499341

Dimensions (mm)Mfrs.		Price Each		
H	W	D	List No.	Order Code
Polycarbonate				
40	65	60	MCRP1020	152-0402
40	105	75	MCRP1080	163-5129
55	125	85	MCRP1130	152-0407
55	165	85	MCRP1170	152-0413
60	145	105	MCRP1210	163-5133
60	220	165	MCRP1450	163-5134
75	165	125	MCRP1240	152-0418
85	220	165	MCRP1460	163-5135
ABS				
40	65	60	MCRP1025	152-0403
55	85	80	MCRP1065	152-0406
55	125	85	MCRP1135	152-0409
55	165	85	MCRP1175	152-0414
60	145	105	MCRP1215	163-5139
60	220	165	MCRP1455	163-5140
75	165	125	MCRP1245	152-0419
75	186	146	MCRP1285	152-0421
85	125	85	MCRP1155	152-0412
85	165	85	MCRP1185	152-0417
85	220	165	MCRP1465	163-5142
ABS - Clear Polycarbonate Lid				
60	145	105	MCRP1215C	163-5150
85	220	165	MCRP1465C	163-5156
Accessories				
Wall Mounting Kit MCMF0041			152-0422	●

Over 500 000 products available online

Project & General Purpose Enclosures - continued

Small Plastic Enclosures

Flanged and Unflanged



- Ideally suited for mounting small printed circuit boards or used as potting boxes
- Flanged lid is perfect for wall or shelf mounting or suspending with a tie wrap
- Satin texture finish
- Complete with lid and self tapping screws
- Screws are color matched to enclosure (nickel plated screws with grey enclosures and black plated with black enclosures)
- Lap joint construction provides protection against access of dust and splashing water
- Designed to meet **IP54**

Universal Flange Kits		Enclosure Type	Flange Kit	Enclosure Type	Flange Kit
Enclosure Type	Flange Kit	1591G	1591F2BK-2	1591H	1591F1BK-2
1591L	1591F1BK-2	1591I	1591F2BK-2	1591J	1591F1BK-2
1591A	1591F1BK-2	1591K	1591F2BK-2	1591M	1591F1BK-2
1591B	1591F1BK-2	1591N	1591F2BK-2	1591P	1591F1BK-2
1591C	1591F1BK-2	1591Q	1591F2BK-2	1591R	1591F1BK-2
1591D	1591F2BK-2	1591S	1591F2BK-2	1591T	1591F1BK-2
1591E	1591F3BK-2	1591U	1591F3BK-2	1591V	1591F3BK-2

415759

Mfrs. List No.	Dimensions H x W x D(mm)	Order Code	Price Each
ABS - Black. PCB Standoffs - Flanged			
1551NFLBK	35 x 35 x 15	100-9445	
1551MFLBK	35 x 35 x 20	100-9447	
1551QFLBK	40 x 40 x 15	100-9451	
1551PFLBK	40 x 40 x 20	100-9453	
1551FFLBK	50 x 35 x 15	100-9456	
1551GFLBK	50 x 35 x 20	100-9458	
1551RFLBK	50 x 50 x 20	100-9463	
1551JFLBK	60 x 35 x 15	100-9465	
1551HFLBK	60 x 35 x 20	100-9467	
1551LFLBK	80 x 40 x 15	100-9469	
1551KFLBK	80 x 40 x 20	100-9471	

ABS - Black. PCB Guides - Flanged			
1591MFLBK	85 x 56 x 25	384-8565	
1591LFLBK	85 x 56 x 39	384-8577	
1591AFLBK	100 x 50 x 25	384-8589	
1591SFLBK	110 x 82 x 44	384-8590	
1591BFLBK	112 x 62 x 31	384-8607	
1591CFLBK	120 x 65 x 40	384-8619	
1591TFLBK	120 x 80 x 59	384-8620	
1591UFLBK	120 x 120 x 59	384-8632	
1591VFLBK	120 x 120 x 94	384-8644	
1591GFLBK	121 x 94 x 34	384-8656	
1591DFLBK	150 x 80 x 50	384-8668	
1591HFLBK	165 x 71 x 29	384-8670	
1591EFLBK	191 x 110 x 61	384-8681	

ABS - Black. PCB Guides - Unflanged			
1591MBK	85 x 56 x 25	443-6842	
1591LBK	85 x 56 x 39	443-6854	
1591ABK	100 x 50 x 25	443-6866	
1591SBK	110 x 82 x 44	443-6878	
1591BBK	112 x 62 x 31	443-6880	
1591CBK	120 x 65 x 40	443-6891	
1591TBK	120 x 80 x 59	443-6908	
1591UBK	120 x 120 x 59	443-6910	
1591VBK	120 x 120 x 94	443-6921	
1591GBK	121 x 94 x 34	443-6933	
1591DBK	150 x 80 x 50	443-6945	
1591EBK	191 x 110 x 61	443-6969	

ABS - Grey. PCB Guides - Unflanged			
1591MGY	85 x 56 x 25	443-6970	
1591LGY	85 x 56 x 39	443-6982	
1591AGY	100 x 50 x 25	443-6994	
1591SGY	110 x 82 x 44	443-7007	
1591BGY	112 x 62 x 31	443-7019	
1591CGY	120 x 65 x 40	443-7020	
1591TGY	120 x 80 x 59	443-7032	
1591GGY	121 x 94 x 34	443-7068	
1591DGY	150 x 80 x 50	443-7070	
1591EGY	191 x 110 x 61	443-7093	

Mfrs. List No.	Dimensions H x W x D(mm)	Order Code	Price Each
ABS - Black - Unflanged			
1591XXLBK	87 x 57 x 57	124-4187	
1591XXABK	100 x 51 x 51	124-4189	
1591XXBBK	113 x 63 x 63	124-4191	
1591XXCBK	121 x 66 x 66	124-4192	
1591XXTBK	123 x 83 x 83	124-4193	
1591XXDBK	152 x 82 x 82	124-4194	
1591XXEBK	193 x 113 x 113	124-4195	
ABS - Black - Flanged			
1591XXFLBK	87 x 57 x 57	124-4203	
1591XXAFLBK	100 x 51 x 51	124-4204	
1591XXBFLBK	113 x 63 x 63	124-4205	
1591XXCFLBK	121 x 66 x 66	124-4207	
1591XXTFLBK	123 x 83 x 83	124-4208	
1591XXDFLBK	152 x 82 x 82	124-4209	
ABS - Black. PCB Guides - Flanged			
1591MSFLBK	85 x 56 x 25	142-6592	
1591LSFLBK	85 x 56 x 39	142-6594	
1591BSFLBK	112 x 62 x 31	142-6597	
1591CSFLBK	120 x 65 x 40	142-6598	
1591GSFLBK	121 x 94 x 34	142-6602	
1591DSFLBK	150 x 80 x 50	142-6603	
1591HSFLBK	165 x 71 x 29	142-6604	
1591ESFLBK	191 x 110 x 61	142-6605	

Translucent Polycarbonate



- Ice blue translucent and red translucent polycarbonate enclosures
- Totally transparent to blue, white and near white LEDs, readouts and displays
- Integral card guide accepts 1.5mm (0.062") PC cards
- Designed to meet **IP54**
- Flammability rating of **UL 94V-0**
- Lid secured with M3 x 10mm Phillips screws

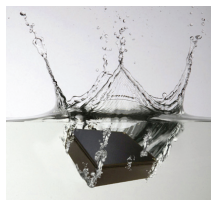
234239

Mfrs. List No.	L	W	D	Order Code	Price Each
Blue					
1591ATBU	100	50	25	381-8743	
1591XATBU	100	51	22	151-1174	
1591XLTBU	87	57	36	151-1173	
1591BTBU	112	62	31	381-8755	
1591XBTBU	113	63	28	151-1175	
1591CTBU	120	65	40	381-8767	
1591XCTBU	121	66	37	151-1176	
1591DTBU	150	80	50	381-8779	
1591ETBU	191	110	61	381-8780	

Multipurpose (Standard & Flanged)



IP68, Diecast



- A range of die cast aluminium enclosures sealed to IP66, IP67 and IP68
- Neoprene rubber seal with self adhesive backing
- Lid secured by M3.5 x 12 fixing screws
- Pre-drilled flange option
- Min. Seal thickness: 3mm
- Min. seal frame width: 4mm
- Min enclosure wall thickness: 1.5mm.
- Min enclosure lid thickness: 1.5mm

New

Mfrs. List No.	Length	Dimensions (mm) Width	Height	Internal Guide Slot	Order Code
Standard					
480-0010	88.9	34.9	30.5	×	177-4842
480-0020	114.3	63.5	30.5	×	177-4843
480-0030	114.3	88.9	55.9	×	177-4844
480-0040	114.3	64.5	55.9	×	177-4845
480-0050	171.5	120.6	55.9	×	177-4846
480-0060	171.5	120.6	106.7	×	177-4847
480-0070	222.3	146	56	×	177-4848
480-0080	222.3	146	106.7	×	177-4849
480-0090	275	175	66	✓	177-4850
480-0100	139.7	101.6	77	✓	177-4851
480-0110	165	127	77	✓	177-4853
480-0120	120	100	36	✓	177-4854
480-0130	250	250	100.3	✓	177-4855
480-0140	80	55	26	✓	177-4856
480-0150	60	55	31	✓	177-4857
Flanged					
483-0010	114.3	35.15	30.5	✓	177-4858
483-0020	139.7	63.6	30.5	✓	177-4859
483-0030	139.7	63.7	55.9	✓	177-4860
483-0040	139.7	89.15	55.9	✓	177-4861

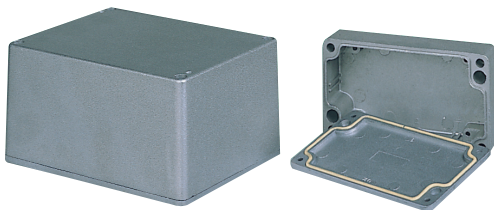
Mfrs.	Dimensions (mm)			Internal	
Flanged					
483-0050	202	120.8	55.9	✓	177-4862
483-0060	202	120.8	106.7	✓	177-4863
483-0070	252	146.4	55.9	✓	177-4865
483-0100	170	101.6	77	✓	177-4866
483-0120	152	100.2	36	✓	177-4867

550815

Price Each

Mfrs. List No.	Order Code	
Standard		
480-0010	177-4842	●
480-0020	177-4843	●
480-0030	177-4844	●
480-0040	177-4845	●
480-0050	177-4846	●
480-0060	177-4847	●
480-0070	177-4848	●
480-0080	177-4849	●
480-0090	177-4850	●
480-0100	177-4851	●
480-0110	177-4853	●
480-0120	177-4854	●
480-0130	177-4855	●
480-0140	177-4856	●
480-0150	177-4857	●
Flanged		
483-0010	177-4858	●
483-0020	177-4859	●
483-0030	177-4860	●
483-0040	177-4861	●
483-0050	177-4862	●
483-0060	177-4863	●
483-0070	177-4865	●
483-0100	177-4866	●
483-0120	177-4867	●

Multipurpose IP65, Diecast



- Diecast aluminium, resistant to moisture and dust ingress.
- Sealed with neoprene gasket. Designed to IP65.
- Mountings and lid fixings outside of seal.
- Integral PCB guide slots (except 109-4718).

Wall Thickness 3.3mm

230599

External Dimensions			Mfrs.	Order Code	Price Each
H	W	D	List No.		
36	90	30	G102	117-5781	●
58	64	35	G104	109-4718	●
65	115	30	G106	109-4719	●
65	115	55	G111	109-4720	●
90	115	55	G113	109-4721	●
108	148	75	G115	117-5782	●
121	171	55	G120	117-5783	●
146	222	55	G124	152-6683	●
146	220	82	G125	152-6685	●
158.5	158.5	102	G139	152-6687	●

Multipurpose (Standard & Flanged Lid) IP54/IP65 Diecast



- Rugged electronic enclosure, diecast in aluminium alloy
- Easy to machine, perfect for audio and RF shielding
- RF/EMI shielded
- Lap jointed lid, fastened by machine screws into threaded holes
- Standard and flanged lid versions meet IP54
- Watertight IP65 versions of standard and flanged lid complete the range

311657

External Dimensions	Mfrs.	Order Code	Price Each
L x W x D (mm)	List No.		
Standard Box			
50 x 50 x 21	1590LLB	100-9517	●
51 x 51 x 27	1590LB	929-980	●
52.5 x 38 x 27	1590H	427-3059	●
92 x 92 x 38	1590Y	100-9518	●
93 x 39 x 27	1590A	306-1589	●
100 x 50 x 21	1590G	382-4410	●
111 x 82 x 40	1590S	929-992	●
112 x 60 x 27	1590B	306-1590	●
119 x 94 x 30	1590BB	930-003	●
120 x 120 x 28	1590Q	100-9519	●
120 x 120 x 55	1590U	930-027	●
120 x 120 x 90	1590V	930-039	●
120 x 94 x 53	1590C	306-1632	●
121 x 80 x 55	1590T	930-015	●
121.1 x 66 x 35.3	1590N1	382-4421	●
125 x 125 x 53	1590KK	100-9520	●
125 x 125 x 75	1590K	427-3072	●
145 x 95 x 45	1590J	427-3060	●
145 x 121 x 39.3	1590XX	NEW 182-9813	●
145 x 121 x 56.4	1590X	NEW 182-9814	●
153 x 82 x 46	1590P1	306-1619	●
188 x 119.5 x 33	1590DD	306-1607	●
188 x 120 x 56	1590D	306-1620	●
188 x 120 x 78	1590E	306-1644	●
188 x 188 x 67	1590F	930-040	●
192 x 111 x 57	1590R1	382-4433	●
Watertight Standard Box			
93 x 39 x 27	1590WA	306-1668	●
112 x 60 x 27	1590WB	306-1670	●
119 x 94 x 30	1590WBB	306-1681	●
120 x 120 x 28	1590WQ	100-9528	●
120 x 120 x 55	1590WU	306-1759	●
120 x 94 x 53	1590WC	306-1735	●
188 x 120 x 52	1590WD	306-1723	●
188 x 120 x 78	1590WE	306-1772	●
188 x 188 x 63	1590WF	306-1760	●
Flanged Lid Box			
51 x 51 x 27	1590LBFL	306-1796	●
93 x 39 x 27	1590AFL	306-1802	●
100 x 50 x 21	1590GFL	382-4470	●
111 x 82 x 40	1590SFL	306-1840	●
112 x 60 x 27	1590BFL	306-1814	●
119 x 94 x 30	1590BBFL	306-1826	●
120 x 120 x 55	1590UFL	306-1942	●
120 x 120 x 90	1590VFL	306-1978	●
120 x 94 x 53	1590CFL	306-1929	●
121 x 80 x 55	1590TFL	306-1930	●
121.1 x 66 x 35.3	1590N1FL	382-4482	●
145 x 121 x 39.3	1590XXFL	NEW 182-9818	●
145 x 121 x 56.4	1590XFL	NEW 182-9819	●
153 x 82 x 46	1590P1FL	306-1851	●
188 x 120 x 52	1590DFL	306-1917	●
188 x 120 x 78	1590EFL	306-1966	●
188 x 188 x 63	1590FFL	306-1954	●
Watertight Flanged Lid Box			
93 x 39 x 27	1590WAFB	306-1991	●
112 x 60 x 27	1590WBFL	306-2004	●
119 x 94 x 30	1590WBBFL	306-2016	●
121 x 80 x 55	1590WTFB	306-2077	●
121.1 x 66 x 35.3	1590WN1FL	384-2587	●
153 x 82 x 46	1590WP1FL	306-2041	●
188 x 120 x 52	1590WDFL	306-2053	●
Standard Black Box			
50 x 50 x 21	1590LLBKB	100-9521	●
51 x 51 x 27	1590LBKB	443-7100	●
52.5 x 38 x 27	1590HBK	443-7111	●

FREE technical support
Our trained engineers are here to help!

See inside front cover
 See inside front cover
www.element14.com

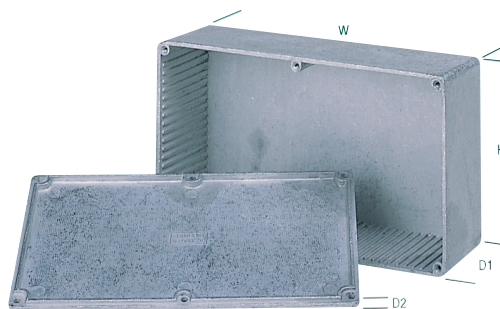
Project & General Purpose Enclosures - continued

Multipurpose (Standard & Flanged Lid) - continued

IP54/IP65 Diecast - continued

External Dimensions L x W x D (mm)	Mfrs. List No.	Order Code	Price Each
Standard Black Box			
92 x 92 x 38	1590YBK	100-9522	
93 x 39 x 27	1590ABK	443-7123	
100 x 50 x 21	1590GBK	443-7135	
111 x 82 x 40	1590SBK	443-7147	
112 x 60 x 27	1590BBK	443-7159	
119 x 94 x 34	1590BBBK	443-7160	
120 x 120 x 28	1590QBK	100-9523	
120 x 120 x 55	1590UBK	443-7172	
120 x 94 x 53	1590CBK	443-7196	
121 x 80 x 55	1590TBK	443-7202	
121.1 x 66 x 35.3	1590N1BK	443-7214	
125 x 125 x 75	1590KBK	443-7226	
145 x 95 x 45	1590JBK	443-7238	
145 x 121 x 39.3	1590XXBK	NEW 182-9815	
145 x 121 x 56.4	1590XBK	NEW 182-9817	
153 x 82 x 46	1590P1BK	443-7240	
188 x 119.5 x 33	1590DBK	443-7287	
188 x 120 x 52	1590DBK	443-7251	
188 x 120 x 78	1590EBK	443-7263	
188 x 188 x 63	1590FBK	443-7275	
192 x 111 x 57	1590R1BK	443-7299	
Flanged Lid Black Box			
51 x 51 x 27	1590LFLBK	443-7305	
93 x 39 x 27	1590AFLBK	443-7317	
100 x 50 x 21	1590GFLBK	443-7329	
111 x 82 x 40	1590SFLBK	443-7330	
112 x 60 x 27	1590BFLBK	443-7342	
119 x 94 x 30	1590BBFLBK	443-7354	
120 x 120 x 55	1590UFLBK	443-7366	
120 x 94 x 53	1590CFLBK	443-7380	
121 x 80 x 55	1590TFLBK	443-7391	
121.1 x 66 x 35.3	1590N1FLBK	443-7408	
145 x 121 x 39.3	1590XXFLBK	NEW 182-9820	
145 x 121 x 56.4	1590XFLBK	NEW 182-9821	
153 x 82 x 46	1590P1FLBK	443-7410	
188 x 119.5 x 33	1590DDFLBK	443-7457	
188 x 120 x 52	1590DFLBK	443-7421	
188 x 120 x 78	1590EFLBK	443-7433	
188 x 188 x 63	1590FFLBK	443-7445	
192 x 111 x 57	1590R1FLBK	443-7469	
Watertight Standard Lid Black Box			
51 x 51 x 27	1590WLBK	443-7470	
93 x 39 x 27	1590WABK	443-7494	
100 x 50 x 21	1590WGBK	443-7500	
111 x 82 x 40	1590WSBK	443-7512	
112 x 60 x 27	1590WBBK	443-7524	
121.1 x 66 x 35.3	1590WN1BK	443-7585	
153 x 82 x 46	1590WP1BK	443-7615	
188 x 120 x 52	1590WDBK	443-7627	
188 x 120 x 78	1590WEBK	443-7639	
188 x 188 x 63	1590WFBK	443-7640	
Watertight Flanged Black Box			
51 x 51 x 27	1590WLBFLBK	443-7676	
111 x 82 x 40	1590WSFLBK	443-7706	
112 x 60 x 27	1590WBFLBK	443-7718	
119 x 94 x 30	1590WBFLBK	443-7720	
120 x 94 x 53	1590WCFLBK	443-7755	
188 x 120 x 52	1590WDFLBK	443-7792	

Multipurpose '5000 Series'



- Ideal for production and prototype applications
- Available unfinished and in black
- Will withstand temperatures of 260°C
- PCB slots for 1.5mm thick boards

Series	Box size	H	W	D ₁	D ₂	Series	Box size	H	W	D ₁	D ₂
BIM 5001/11	1	31	50	27	4	BIM 5005/15	5	50	82	46	4
BIM 5002/12	2	25	50	21	4	BIM 5006/16	6	61	112	56	4
BIM 5003/13	3	31	62	27	4	BIM 5007/17	7	61	95	57	4
BIM 5004/14	4	40	66	36	4						

230659

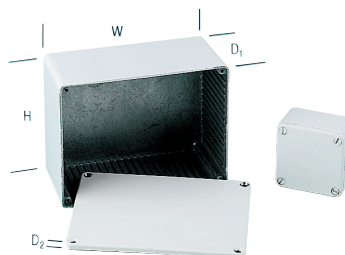
Price Each

Mfrs. List No.	Order Code	Price Each
Unpainted		
BIM 5001/11	117-1658	
BIM 5002/12	117-1660	
BIM 5003/13	117-1663	
BIM 5004/14	117-1666	
BIM 5005/15	117-1668	
BIM 5006/16	117-1671	
BIM 5007/17	117-1673	
Black		
BIM 5001/11 BLK	117-1659	
BIM 5002/12 BLK	117-1661	
BIM 5003/13 BLK	117-1664	
BIM 5004/14 BLK	117-1667	
BIM 5005/15 BLK	117-1669	
BIM 5006/16 BLK	117-1672	
BIM 5007/17 BLK	117-1674	
Accessories		
Wall Mounting Feet (Set of 4)	117-1675	
BIM 5001/GASKET	137-3721	
BIM 5002/GASKET	137-3722	
BIM 5003/GASKET	137-3723	
BIM 5004/GASKET	137-3724	
BIM 5005/GASKET	137-3725	
BIM 5006/GASKET	137-3726	

Multipurpose - '5000 Series' (PCB Guides)



IP65, Diecast (Nylon Coated)



- Nylon coated (75 Microns) diecast boxes
- Each has 1.5mm (0.62") slots for PCBs
- Optional wall mounting feet available

230603

External Dimensions						Order Code	Price Each
H	W	D ₁	D ₂	Size			
Boxes							
31	50	27	4	1	117-1624		
25	50	21	4	2	117-1625		
31	62	27	4	3	117-1626		
40	66	36	4	4	117-1627		
50	82	46	4	5	117-1629		
61	112	56	4	6	117-1631		
61	95	57	4	7	117-1632		
							Price Per Set
Wall Mounting Feet (Set of 4)						117-1675	

Spotted an error?



Now you can update our product information online. Simply search for the order code at www.element14.com and look for this logo to notify us of an error.

Multipurpose (PCB Guides)



Diecast



- Aluminium diecast boxes to **LM24**. Internal lip provides RF/EMI shielding
- Selected boxes have internal PCB guide slots

Order Code	External Dimensions (mm)				Internal Guide Slots	Mfrs. List No.
	H ₁	H ₂	W	D		
278-804	25.9	4	55	60	YES	459-0150
525-601	25.4	4	34.9	88.9	NO	459-0010
525-595	20.9	4	55	80	YES	459-0140
525-613	25.4	4	63.5	114.3	NO	459-0020
525-625	54.9	4	64.5	114.3	NO	459-0040
525-637	54.9	4	88.9	114.3	NO	459-0030
525-649	50.8	4	120.6	171.5	NO	459-0050
278-816	30.9	4	100	120	YES	459-0120
525-650	101.6	4	120.6	171.5	NO	459-0060
278-841	50.8	4	146	222.3	NO	459-0070
278-828	71.9	4	101.6	139.7	YES	459-0100
278-853	101.6	4	146	222.3	NO	459-0080
278-830	71.9	4	127	165	YES	459-0110
278-865	60.9	4	175	275	YES	459-0090
278-877	95.2	4	250	250	YES	459-0130

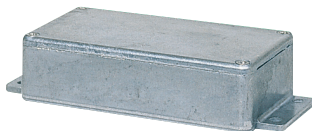
Price Each

Order Code
278-804
525-601
525-595
525-613
525-625
525-637
525-649
278-816
525-650
278-841
278-828
278-853
278-830
278-865
278-877

Flanged, RF/EMI Shielded (PCB Guides)



Diecast



- Aluminium diecast boxes with pre-drilled mounting flanges
- Flanges allow box to be surface mounted without restriction of internal mounting screws
- Supplied unfinished, but will accept most finishes with minimum preparation

Mfrs. List No.	Order Code	W ₂	D ₁	H ₁	H ₂	D ₂	W ₁	Flange Hole Fixing Centres
455-0010	278-889	35.15	89.2	30	4	25	114	102 x 5 dia
455-0020	278-890	63.6	114.1	30	4	45	140	127 x 30 x 5 dia
455-0040	278-907	63.7	114.2	55	4	45	140	127 x 30 x 5 dia
455-0030	278-919	89.15	114.7	55	4	69	140	127 x 50 x 5 dia
455-0120	278-920	100	120	35	4	80	150	137 x 60 x 5 dia
455-0100	278-932	101.6	140	76	4	80	170	157 x 60 x 5 dia
455-0050	278-956	120.8	171.8	55	4	100	202	189 x 80 x 5 dia
455-0060	278-968	120.8	171.8	106	4	100	202	189 x 80 x 5 dia
455-0070	278-970	146.4	211.6	55	4	118	252	239 x 98 x 5 dia

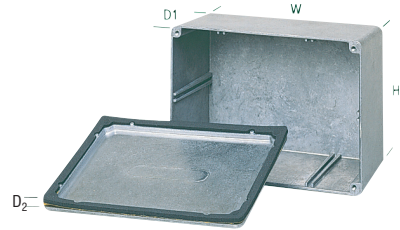
Price Each

Order Code
278-889
278-890
278-907
278-919
278-920
278-932
278-956
278-968
278-970

Multipurpose, RF/EMI Shielded



IP66, Diecast



- Aluminium diecast boxes to **LM24**
- Supplied with adhesive backed neoprene seal
- Internal guide slots available on selected boxes
- RF/EMI shielded without seal

External Dimensions				No. Lid Fixing Screws	Internal Guide Slots	Mfrs. List No.	Order Code
H	W	D ₁	D ₂				
26	55	80	5	4	YES	460-0140	587-618
30.5	64	114.5	5	4	NO	460-0020	279-043
55.9	88.9	115.3	5	4	NO	460-0040	279-055
55.9	90.5	115.3	5	4	NO	460-0030	279-067
36	100	120	5	4	YES	460-0120	587-590
77	101.6	139.7	5	4	YES	460-0100	279-079
77	127	165	5	6	YES	460-0110	279-080
55.9	120.6	171.5	5	6	NO	460-0050	279-092
106.7	120.6	171.5	5	6	NO	460-0060	279-109
56	146	222.3	5	6	NO	460-0070	279-110
106.7	146	222.3	5	6	NO	460-0080	279-122
101	250	250	5	8	YES	460-0130	587-606
66	175	275	5	6	YES	460-0090	587-588

Price Each

Order Code
587-618
279-043
279-055
279-067
587-590
279-079
279-080
279-092
279-109
279-110
279-122
587-606
587-588

Flanged, RF/EMI Shielded (PCB Guides)



IP66, Diecast



- Flanged aluminium diecast boxes to LM24
- Supplied with adhesive backed neoprene rubber seal
- RF/EMI shielded without seal

External Dimensions				Flange Hole Fixing Centres	Mfrs. List No.	Order Code		
H1	H2	W1	W2					
30.5	25	114	35.2	26	5	102 x 5 x dia.	456-0010	279-134
30.5	45	140	63.6	26	5	128 x 30 x 5 x dia.	456-0020	279-146
55.9	45	140	63.7	51	5	127 x 30 x 5 x dia.	456-0040	525-662
55.9	69	140	89.2	51	5	127 x 50 x 5 x dia.	456-0030	279-158
36	80	150	100.3	31	5	137 x 60 x 5 x dia.	456-0120	587-679
77	80	170	101.6	72	5	157 x 60 x 5 x dia.	456-0100	587-655
55.9	100	202	120.8	51	5	189 x 80 x 5 x dia.	456-0050	587-631
55.9	118	252	146.4	51	5	239 x 98 x 5 x dia.	456-0070	587-643

Project & General Purpose Enclosures - continued

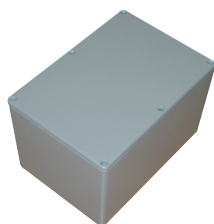
Flanged, RFI/EMI Shielded (PCB Guides) - continued

IP66, Diecast - continued

Order Code	Price Each
279-134 ●	
279-146 ●	
525-662 ●	
279-158 ●	
587-679 ●	
587-655 ●	
587-631 ●	
587-643 ●	

218891

Powder Coated Grey & Black Aluminium Enclosures



A range of diecast boxes in various sizes, manufactured in a robust aluminium alloy. These lightweight enclosures provide excellent screening against EMI/RFI and are therefore ideal housing for electronic components and circuits. The close fitting lid is secured using countersunk screws. Available in Black (RAL 9005) or Grey (BS4800/18B25). Screw size M3.5 x 9mm.

Operating Temperature -40 to 110°C (In Air)

W	Dimensions		Mfrs. List No.	Order Code
	H	D		
Grey				
88.9	29.5	34.9	461-0010	916-5649
114.3	29.5	63.5	461-0020	916-5665
114.3	54.9	88.9	461-0030	916-5681
114.3	54.9	64.5	461-0040	916-5703
171.5	54.9	120.6	461-0050	916-5720
171.5	105.7	120.6	461-0060	916-5746
222.3	54.9	146	461-0070	916-5754
222.3	105.7	146	461-0080	916-5770
275	65	175	461-0090 *	916-5789
139.7	76	101.6	461-0100 *	916-5800
250	99.3	250	461-0130 *	916-5843

Black				
88.9	29.5	34.9	461-0010E	916-5657
114.3	29.5	63.5	461-0020E	916-5673
114.3	54.9	88.9	461-0030E	916-5690
114.3	54.9	64.5	461-0040E	916-5711
171.5	54.9	120.6	461-0050E	916-5738
222.3	54.9	146	461-0070E	916-5762
275	65	175	461-0090E *	916-5797
165	76	127	461-0110E *	916-5819
250	99.3	250	461-0130E *	916-5851

* - Available with Integral PCB Guides

403718

Mfrs. List No.	Order Code	Price Each
Grey		
461-0010	916-5649 ●	
461-0020	916-5665 ●	
461-0030	916-5681 ●	
461-0040	916-5703 ●	
461-0050	916-5720 ●	
461-0060	916-5746 ●	
461-0070	916-5754 ●	
461-0080	916-5770 ●	
461-0090	916-5789 ●	
461-0100	916-5800 ●	
461-0130	916-5843 ●	
Black		
461-0010E	916-5657 ●	
461-0020E	916-5673 ●	
461-0030E	916-5690 ●	
461-0040E	916-5711 ●	
461-0050E	916-5738 ●	
461-0070E	916-5762 ●	
461-0090E	916-5797 ●	
461-0110E	916-5819 ●	
461-0130E	916-5851 ●	

Diecast Enclosures

1550 Series



New

- Rugged, diecast aluminum alloy enclosure
- Unpainted version is vibra finished for a smooth surface with no sharp edges
- Lap joint construction protection against access of dust and splashing water
- Lap joint construction provides for improved EMI/RFI shielding
- Low side wall draft angle for easy P.C. board mounting

609510

Mfrs. List No.	Dimensions (mm)			Order Code	Price Each
	L	W	D		
Unpainted - IP54					
1550A	89	35	30	182-3031 ●	
1550B	115	64	30	182-3032 ●	
1550C	115	65	55	182-3033 ●	
1550D	115	65	55	182-3034 ●	
1550E	172	121	55	182-3035 ●	
1550F	172	121	106	182-3037 ●	
1550G	222	146	55	182-3038 ●	
1550H	222	146	106	182-3039 ●	
1550J	275	175	65	182-3040 ●	
1550K	140	102	76	182-3041 ●	
1550L	165	127	76.5	182-9824 ●	
1550M	120	100	35	182-3042 ●	
1550N	250	250	100	182-3043 ●	
1550P	80	55	25	182-3044 ●	
1550Q	80	55	30	182-3045 ●	
Black - IP54					
1550ABK	89	35	30	182-3046 ●	
1550BBK	115	64	30	182-3047 ●	
1550CBK	115	65	55	182-3049 ●	
1550DBK	115	65	55	182-3051 ●	
1550EBK	172	121	55	182-3052 ●	
1550FBK	172	121	106	182-3053 ●	
1550GBK	222	146	55	182-3054 ●	
1550HBK	222	146	106	182-3055 ●	
1550JBK	275	175	65	182-3056 ●	
1550KBK	140	102	76	182-3057 ●	
1550WL	165	127	76.5	182-9826 ●	
1550WLBK	165	127	76.5	182-9827 ●	
1550LBK	165	127	76.5	182-9825 ●	
1550MBK	120	100	35	182-3058 ●	
1550NBK	250	250	100	182-3059 ●	
Unpainted - Watertight - IP66					
1550PBK	80	55	25	182-3060 ●	
Black - Watertight - IP66					
1550QBK	80	55	30	182-3062 ●	

Powerful and affordable solutions for PCB design



CadSoft's EAGLE software offers a user-friendly, powerful and affordable solution for PCB design, including three modules embedded in a single user interface; Schematic Capture, Board Layout, and Autorouter. Find out more at www.element14.com

Over 500 000 products available online



Light Duty, Watertight, Diecast Enclosures

1550W Series - IP66



- Rugged, diecast aluminum alloy enclosure
- Unpainted version is vibra finished for a smooth surface with no sharp edges
- Painted version is painted with tough - satin black polyester powder paint for a lasting finish, even after machining
- Lap joint construction with a self-adhesive, EVA foam gasket for the lid provides protection against access of dust and water
- Designed to meet IP66 (with properly installed gasket and lid screws torqued at 55 cN.m)
- Low side wall draft angle for easy P.C. board mounting

609514

Mfrs. List No.	Dimensions (mm)			Order Code	Price Each
	L	W	D		
Unpainted					
1550WA	89	35	31	182-3063	
1550WB	115	64	31	182-3064	
1550WC	115	91	56	182-3065	
1550WD	115	65	56	182-3066	
1550WE	172	121	56	182-3067	
1550WF	172	121	107	182-3068	
1550WG	222	146	56	182-3069	
1550WH	222	146	107	182-3070	
1550WJ	275	175	66	182-3071	
1550WK	140	102	77	182-3072	
1550WM	120	100	36	182-3074	
1550WN	250	250	101	182-3075	
1550WP	80	55	26	182-3076	
1550WQ	60	55	31	182-3077	

Black					
1550WABK	89	35	31	182-3078	
1550WBBK	115	64	31	182-3079	
1550WCBK	115	91	56	182-3080	
1550WDBK	115	65	56	182-3081	
1550WEBK	172	121	56	182-3082	
1550WFBK	172	121	107	182-3083	
1550WGBK	222	146	56	182-3084	
1550WHBK	222	146	107	182-3086	
1550WJBK	275	175	66	182-3087	
1550WKBK	140	102	77	182-3088	
1550WMBK	120	100	36	182-3089	
1550WNBK	250	250	101	182-3090	
1550WPBK	80	55	26	182-3091	
1550WQBK	60	55	31	182-3092	

Thick Wall, Watertight, Diecast Enclosures

1550Z Series - IP66



- Rugged, diecast aluminum alloy enclosure
- Two piece "tongue & groove" construction for protection against access of dust and water
- Ideal for repetitive opening and closing
- Easy to wall mount using "through box - blind hole" construction (on all sizes except 1550Z102 & 1550Z120)
- Access to blind holes is outside of gasket ring for superior protection
- Unpainted version is vibra finished for a smooth surface with no sharp edges
- Painted version is painted with tough polyester powder paint for a lasting finish, even after machining
- Lid secured with either two, four or six (count varies with size) stainless steel, Phillips head, counter sunk, machine screws
- Lid screws are outside the gasket protection area to eliminate the need for "O" rings on the screws
- Designed to meet IP66
- Gasket is pre-formed, one-piece - silicone rubber

609515

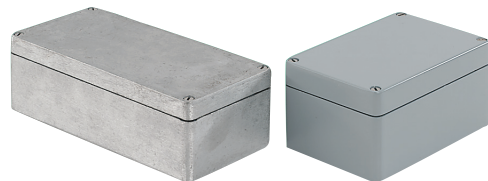
Mfrs. List No.	Dimensions (mm)			Order Code	Price Each
	L	W	D		
Unpainted					
1550Z101	50	45	30	182-3093	
1550Z102	90	36	30	182-3094	
1550Z103	98	64	34	182-3095	
1550Z104	64	58	35	182-3096	

Mfrs. List No.	Dimensions (mm)			Order Code	Price Each
	L	W	D		
Unpainted					
1550Z106	64	65	30	182-3098	
1550Z107	125	80	40	182-3099	
1550Z108	125	80	58	182-3100	
1550Z109	150	64	36	182-3101	
1550Z111	115	65	55	182-3102	
1550Z113	115	90	55	182-3104	
1550Z115	148	108	75	182-3105	
1550Z116	160	100	60	182-3106	
1550Z117	160	100	81	182-3107	
1550Z120	171	121	55	182-3108	
1550Z124	222	146	55	182-3109	
1550Z137	1220.5	120.5	100	182-3110	
1550Z139	159	159	100	182-3111	
1550Z220	222	146	82	182-3112	

Black					
1550Z101BK	50	45	30	182-3113	
1550Z102BK	90	36	30	182-3114	
1550Z103BK	98	64	34	182-3116	
1550Z104BK	64	58	35	182-3117	
1550Z106BK	64	65	30	182-3118	
1550Z107BK	125	80	40	182-3119	
1550Z108BK	125	80	58	182-3120	
1550Z109BK	150	64	36.5	182-3121	
1550Z111BK	115	65	55	182-3122	
1550Z113BK	115	90	55	182-3123	
1550Z115BK	148	108	75	182-3124	
1550Z116BK	160	100	60	182-3125	
1550Z117BK	160	100	81	182-3126	
1550Z120BK	171	121	55	182-3128	
1550Z124BK	222	146	55	182-3129	
1550Z137BK	120.5	120.5	100.5	182-3130	
1550Z139BK	159	159	100.5	182-3131	
1550Z220BK	222	146	82	182-3132	

Heavy-Duty, Watertight

IP65 Sealed



- Rugged, thick wall, diecast aluminum alloy
- Easy wall mounting using through box - blind holes
- Gasket mounts in cast lid groove, compressed by box tongue
- Painted version is grey (RAL 7001)
- Includes all stainless steel captive hardware
- Internal earthing screws are copper plated
- Models 1590Z100, 119, 120, 150, 160, 162, 166 & 231 include an internal mounting shelf

Mfrs. List No.	L	W	D	Mfrs. List No.	L	W	D
Unpainted							
1590Z061	64	58	36	1590Z110GY	76	80	42
1590Z062	98	64	36	1590Z119GY	122	120	80
1590Z063	150	64	36	1590Z120GY	125	80	60.5
1590Z100	76	80	42	1590Z130GY	176	80	54
1590Z110	76	80	42	1590Z135GY	176	80	62
1590Z119	122	120	80	1590Z150GY	221	121	80
1590Z120	125	80	60.5	1590Z160GY	160	160	90
1590Z130	176	80	54	1590Z162GY	260	159	90
1590Z135	176	80	62	1590Z166GY	360	160	90
1590Z150	221	121	80	1590Z231GY	200	230	112
1590Z160	160	160	90	Black			
1590Z162	260	159	90	1590Z061BK	64	58	36
1590Z166	360	160	90	1590Z100BK	76	80	42
1590Z231	200	230	112	1590Z120BK	125	80	60.5
Painted							
1590Z060GY	50	45	30	1590Z130BK	176	80	54
1590Z061GY	64	58	36	1590Z150BK	221	121	80
1590Z062GY	98	64	36	1590Z162BK	260	159	90
				1590Z231BK	200	230	112

230609

Mfrs. List No.	Order Code	Price Each
Unpainted		
1590Z061	353-5940	
1590Z062	353-5952	
1590Z063	353-5964	
1590Z100	353-5976	
1590Z110	353-5988	
1590Z119	353-5990	
1590Z120	353-6002	

Project & General Purpose Enclosures - continued

Heavy-Duty, Watertight - continued

IP65 Sealed - continued

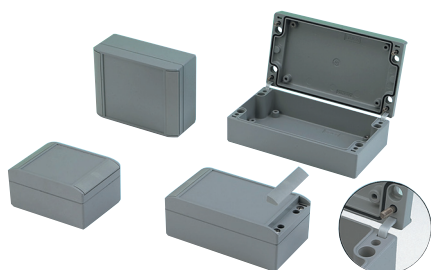
Mfrs. List No.	Order Code	Price Each
Unpainted		
1590Z130	353-6014	
1590Z135	353-6026	
1590Z150	353-6038	
1590Z160	353-6040	
1590Z162	353-6051	
1590Z166	762-6169	
1590Z231	353-6063	
Painted		
1590Z060GY	353-6075	
1590Z061GY	353-6087	
1590Z062GY	353-6099	
1590Z100GY	353-6117	
1590Z110GY	353-6129	
1590Z119GY	353-6130	
1590Z120GY	353-6142	
1590Z130GY	353-6154	
1590Z135GY	353-6166	
1590Z150GY	353-6178	
1590Z160GY	353-6180	
1590Z162GY	353-6191	
1590Z166GY	762-6177	
1590Z231GY	353-6208	
Black		
1590Z061BK	762-6193	
1590Z100BK	762-6223	
1590Z120BK	762-6258	
1590Z130BK	762-6266	
1590Z150BK	762-6282	
1590Z162BK	762-6304	
1590Z231BK	762-6312	

Electromechanical

22

Alucase Enclosure

IP67 Die-Cast Aluminium



- Very modern design of die-cast aluminium enclosures
- Range of 14 sizes, sealed to IP67 and painted mid grey RAL 7040
- No visible lid fixing screws, as these are hidden behind clip on ABS trims
- Recessed area in lid for mounting a membrane keypad or product label
- Two plastic lid retaining straps aid access during servicing
- M5 screw pillars in the lid and base for mounting the assemblies
- Screw ports for easy wall mounting without opening the case

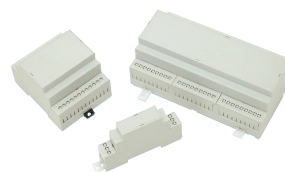
Description	External Dimensions			Mfrs. List No.	Order Code
	Width	Depth	Height		
AC 090	90	120	60	191.090.000	537-1338
AC 092	90	160	60	191.092.000	537-1340
ACF 112	110	200	60	190.112.000	537-1363
ACF 130	130	160	70	190.130.000	537-1375
ACF 132	130	220	70	190.132.000	537-1387
AC 150	150	180	90	191.150.000	537-1405
ACF 152	150	260	60	190.152.000	537-1417
AC 172	170	280	90	191.172.000	537-1466

341099

Description	Order Code	Price Each
AC 090	537-1338	
AC 092	537-1340	
ACF 112	537-1363	
ACF 130	537-1375	
ACF 132	537-1387	
AC 150	537-1405	
ACF 152	537-1417	
AC 172	537-1466	

Plug In & DIN-Rail Mount

DIN Rail Module Boxes



- Snap-fit kit for easy assembly
- Boxes fit 35mm DIN rail or direct surface mount
- Self customised perforated terminal covers as standard
- Snap fit terminal covers for IP20 finger protection
- Can carry up to 3 PCBs horizontally and 2/4 vertically
- Grey, transparent red or clear snap-in covers
- Front panel ideal for screen printing logos etc.
- Moulded in grey UL94-V0 flame retardant PC
- Enclosed base eliminates any need for additional insulation

Mfrs. List No.	Box Size	Dimensions (mm)			Height
		Width	Depth		
CNMB/1-	1	17.5	58	90	
CNMB/2-	2	36	58	90	
CNMB/3-	3	53	58	90	
CNMB/4-	4	71	58	90	
CNMB/5-	5	88	58	90	
CNMB/6-	6	106	58	90	
CNMB/9-	9	160	58	90	
CNMB/12-	12	210	58	90	

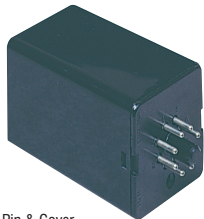
Kit Contents: Base, Top Panel, Clips for rail or wall mounting, 2 perforated terminals. (6 and 9 kits are supplied with additional blank term guards).

551111.600711

Mfrs. List No.	Box Size / Poles	Order Code	Price Each
Standard DIN Rail Kit			
CNMB/1/KIT	1	177-4462	
CNMB/2/KIT	2	177-4464	
CNMB/3/KIT	3	177-4465	
CNMB/4/KIT	4	177-4466	
CNMB/5/KIT	5	177-4467	
CNMB/6/KIT	6	177-4468	
CNMB/9/KIT	9	177-4469	
CNMB/12/KIT	12	177-4470	
Vented DIN Rail Kit			
CNMB/1V/KIT	1	177-4471	
CNMB/2V/KIT	2	177-4472	
CNMB/3V/KIT	3	177-4473	
CNMB/4V/KIT	4	177-4474	
CNMB/5V/KIT	5	177-4476	
CNMB/6V/KIT	6	177-4477	
CNMB/9V/KIT	9	177-4478	
CNMB/12V/KIT	12	177-4479	
Standard DIN Rail Box			
CNMB/1/2	1	177-4482	
CNMB/2/2	2	177-4483	
CNMB/3/2	3	177-4484	
CNMB/4/2	4	177-4485	
CNMB/5/2	5	177-4486	
CNMB/6/2	6	177-4488	
CNMB/9/2	9	177-4489	
CNMB/12/2	12	177-4490	
Solid Top DIN Rail Box			
CNMB/1ST/2	1	177-4491	
CNMB/2ST/2	2	177-4492	
CNMB/3ST/2	3	177-4493	
CNMB/4ST/2	4	177-4494	
CNMB/6ST/2	6	177-4495	
CNMB/9ST/2	9	177-4496	
Vented DIN Rail Box			
CNMB/1V/2	1	177-4497	
CNMB/2V/2	2	177-4498	
CNMB/3V/2	3	177-4500	
CNMB/4V/2	4	177-4501	
CNMB/6V/2	6	177-4502	
CNMB/9V/2	9	177-4503	
CNMB/12V/2	12	177-4504	
Extended Wall DIN Rail Box			
CNMB/1W/2	1	177-4506	
CNMB/2W/2	2	177-4507	
CNMB/3W/2	3	177-4508	
CNMB/4W/2	4	177-4509	
CNMB/6W/2	6	177-4510	
CNMB/9W/2	9	177-4511	

Mfrs. List No.	Box Size / Poles	Order Code	Price Each
Solid Terminal Guard			
CNMB/1/TGS		177-4512	
CNMB/2/TGS		177-4513	
CNMB/3/TGS		177-4514	
CNMB/4/TGS		177-4515	
CNMB/5/TGS		177-4516	
For 6, 9 & 12 size module use CNMB/3TGS			
Pre-drilled Terminal Guard			
CNMB/1/TG508	3	177-4518	
CNMB/2/TG508	6	177-4519	
CNMB/3/TG508	9	177-4520	
CNMB/4/TG508	12	177-4521	
CNMB/5/TG508	15	177-4522	
For 6, 9 & 12 size module use CNMB/3/TG508			
Perforated Terminal Guard			
CNMB/1/TG508P	3	180-0774	
CNMB/2/TG508P	6	180-0775	
CNMB/3/TG508P	9	180-0776	
CNMB/4/TG508P	12	180-0777	
CNMB/5/TG508P	15	180-0778	
For 6, 9 & 12 size module use CNMB/3/TG508P			
Grey Clip on Cover			
CNMB/1/PG	1	177-4523	
CNMB/2/PG	2	177-4524	
CNMB/3/PG	3	177-4525	
CNMB/4/PG	4	177-4526	
CNMB/5/PG	5	177-4527	
CNMB/6/PG	6	177-4528	
CNMB/9/PG	9	177-4531	
CNMB/12/PG	12	177-4532	
Clear Clip on Cover			
CNMB/1/PC	1	177-4533	
CNMB/2/PC	2	177-4534	
CNMB/3/PC	3	177-4535	
CNMB/4/PC	4	177-4536	
CNMB/5/PC	5	177-4537	
CNMB/6/PC	6	177-4538	
CNMB/9/PC	9	177-4539	
CNMB/12/PC	12	177-4540	

8 and 11 Pin Standard



8 Pin & Cover

- 8 pin and 11 pin plug-in module
- Optional polycarbonate cover available

Contact Rating 3A (mated)
 Operating Temperature 100°C
 Contact Resistance <3mΩ

External dimensions
 H=50
 W=50
 D=79/44

218859

Mfrs. List No.	Order Code	Price Each
8 Pin 01BBN08	301-760	
11 Pin 01BBN11	301-772	
76mm Cover 01CBP76	301-784	
41mm Cover 01CBP41	444-6562	

Vertical Box for DIN Rail



A range of two vertical boxes designed for 5mm pitch plug-in terminal blocks. The plates are to cover unused terminal areas and come in either solid or perforated. Each of the three sides of the boxes accept up to twelve ways of terminal blocks.



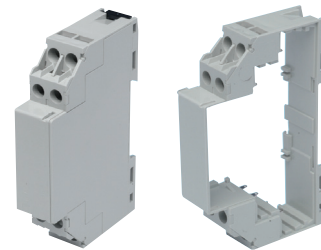
CVB225: W=22.5, H=82, D=90mm
 CVB450: W=45.5, H=82, D=90mm

Kit Contents: 12 way closed plate, three 4 way closed plates and three 4 way perforated plates.

551099.600710

Mfrs. List No.	Order Code	Price Each
CVB225/KIT	177-4441	
CVB450/KIT	177-4442	

Extendable Module Box



- 17.5mm multiples
- Extendable to required length
- Top hat 35mm din rail or surface mounting
- Flame retardent UL 94V0 material
- Max 2 x 2.5mm² solid or stranded
- Terminal protection to IP20
- The main box has a detachable end plate and the extension box is sideless
- Each module, as standard, has 8 screw terminals which are removeable as required

551096.600709

Mfrs. List No.	Description	Order Code	Price Each
CMEB	17.5mm Module Box	177-4480	
CMEB/E	Extension	177-4481	

DIN Rail Enclosure
Optional PCB



- Universal mounting (TS35 or TS32)
 - Available in 4 sizes
 - Complete with screw terminals
 - Moulded from grey polyamide 6.6
- Rated at 10A, 250V
 Max Cable Size 4mm²

229053

Type	H	W	D	Terminal	Order Code	Price Each
1	63	20	58	4	318-7834	
2	90.5	16.5	58	4	318-7846	
3	90.5	22.5	58	6	318-7858	
4	90.5	28.5	58	8	318-7860	
PCB for type 1					318-7871	
PCB for type 2, 3 & 4					318-7883	

Biodegradable ESD packaging, unique to element14



We now despatch over 3.6 million products per year in our new static dissipative, biodegradable packaging. Try them yourself - purchase online at www.element14.com

FREE technical support

Our trained engineers are here to help!



See inside front cover



See inside front cover



www.element14.com

Plug In & DIN-Rail Mount - continued

Miniature Housing (DIN Rail)



PC



- Fully insulated polycarbonate
- Flammability tested to **UL94V-1/2**
- Connection between PCB and terminals made by connecting pins (supplied)
- Captive self-locking terminal screws are resistant to loosening through vibration
- Smallest size accepts 2.5mm² wire, remaining sizes accept 4mm² wire

218863

External Dimensions			No. of	Order	Price Each
H	W	D	Terminals	Code	
110	22.5	75	12	118-1523 ●	
110	55	75	16	118-1522 ●	
110	99.7	75	30	118-1524 ●	

Modular Interface Support



- Suitable for either 72mm or 107mm width PCB's
- Modular Construction for easy Assembly
- Snap fit Din Rail mounting fixtures
- Flame retardant green Polyamide 66 UL 94V0 moulding
- Integral marker facility



Mfrs. List No.	Description	Width	Order Code
72mm Series			
CIME/M/BE1125SS	Base Element	11.25mm	177-4443
CIME/M/BE2250SS	Base Element	22.5mm	177-4444
CIME/M/BE4500SS	Base Element	45mm	177-4445
CIME/M/FE0000SS	Foot Element		177-4446
CIME/M/SE1125SS	End Section	11.25mm	177-4447
CIME/M/SE2250SS	End Section	22.5mm	177-4448
CIME/M/SEF1125S	End Section with Foot	11.25mm	177-4449
CIME/M/SEF22250S	End Section with Foot	22.5mm	177-4450
CIME/M/MPF	Flat Wall Plate		177-4452
CIME/M/MPR	Raised Wall Plate		177-4453
107mm Series			
CIME/E/BE1850SS	Base Element	18.5mm	177-4454
CIME/E/BEF1850SS	Base Element with Foot	18.5mm	177-4455
CIME/E/BE3500SS	Base Element	35mm	177-4456
CIME/E/BEF3500SS	Base Element with Foot	35mm	177-4457
CIME/E/SE1000S	End Section	11.5mm	177-4458
CIME/E/SEF1000S	End Section with Foot	11.5mm	177-4459
CIME/E/MPF	Flat Wall Plate		177-4460
CIME/E/MPR	Raised Wall Plate		177-4461

551045.600708

Mfrs. List No.	Order Code	Price Each
72mm Series		
CIME/M/BE1125SS	177-4443 ●	
CIME/M/BE2250SS	177-4444 ●	
CIME/M/BE4500SS	177-4445 ●	
CIME/M/FE0000SS	177-4446 ●	
CIME/M/SE1125SS	177-4447 ●	
CIME/M/SE2250SS	177-4448 ●	
CIME/M/SEF1125S	177-4449 ●	
CIME/M/SEF22250S	177-4450 ●	
CIME/M/MPF	177-4452 ●	
CIME/M/MPR	177-4453 ●	
107mm Series		
CIME/E/BE1850SS	177-4454 ●	
CIME/E/BEF1850SS	177-4455 ●	
CIME/E/BE3500SS	177-4456 ●	
CIME/E/BEF3500SS	177-4457 ●	
CIME/E/SE1000S	177-4458 ●	
CIME/E/SEF1000S	177-4459 ●	
CIME/E/MPF	177-4460 ●	
CIME/E/MPR	177-4461 ●	

Hand-Held Enclosures

USB Enclosure



Clear Polycarbonate



- Enclosure manufactured from transparent Polycarbonate
- 3 snap together enclosure parts
- Enclosure has recessed area in lid and base
- Connector is SMD 4 Pin Plug
- Insulator colour is white
- Plug is supplied with 2 x 9mm posts

H = 8.7, W = 71, D = 23mm

510156

Mfrs. List No.	Order Code	Price Each
Enclosure		
MCG1901	160-3603 ●	
Connector - USB Type A		
MCKUSBX-SMT2AP1S-W30	SMD158-4673 ●	

Key Fob



ABS



- Moulded in black ABS. Comprises of two parts which snap together
- Lid has view window for LED.
- Loop provided for key ring or strap
- PCB mounting bosses provided in base
- Terminals provided for MN21 12V battery



H = 45, L = 35, P = 14 (117-1648)
H = 57, L = 36, P = 16 (117-1645/1646/1647)

230624

Version	Button Colours	Mfrs. List No.	Order Code	Price Each
One Large Button	Black	2957-46	117-1648 ●	
One Small Button	Red	2957-22	117-1645 ●	
Two Small Buttons	Red/Blue	2957-23	117-1646 ●	
Three Small Buttons	Red/Blue/Black	2957-43	117-1647 ●	

Miniature, (Pocket clip and battery compartment)



ABS



- ABS moulded cases, with integral PP3 battery compartment and pocket/belt clip
- Four integral locating pegs and sockets will accept 55 x 63mm PCB
- Supplied with clip-in battery terminals suitable for PP3 style battery

External dimensions : H=23, W=103, D=62

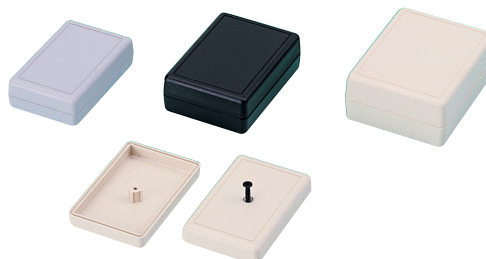
218884

Colour	Order Code	Price Each
Black	223-554 ●	
Grey (RAL9002)	223-566 ●	
White	645-734 ●	

Miniature Cases - 'C Series'



ABS



- Stylish and versatile miniature ABS cases
- Ideal for personal safety, remote control, medical, and controller type devices
- Available in three colours: black, mid-grey or almond
- Interlocking assembly with central fixing screw

Operating temperature -40°C to +90°C

230627

Express checkout

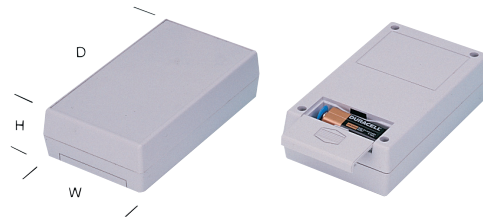


With no need to re-enter your details, returning customers can now buy products even faster - **order online today at www.element14.com**

Mftrs.	External Dimensions			Price Each
List No.	H	W	D	Order Code
Black				
C-4BK	14.732	34.925	53.975	737-537
C-6BK	19.126	40.97	57.48	737-562
C-8BK	23.495	46.99	60.96	737-598
Mid Grey				
C-4GY	14.732	34.925	53.975	737-549
C-6GY	19.126	40.97	57.48	737-574
Almond				
C-4AL	14.732	34.925	53.975	737-550
C-8AL	23.495	46.99	60.96	737-616



Recessed (Battery Compartment)
ABS



- Attractive, robust and versatile ABS cases in mid-grey
- Top panel includes a recess for mounting membrane keypads or product labels
- Includes internal mounting pillars in the top and base for PCBs and assemblies
- All cases include a battery compartment for one 9V PP3 size cell

External Dimensions		Recess Area	Mftrs. List No.	Order Code
H	W	D		
38	66	104	211-IGY	775-794
38	82.5	111	231-IGY	775-800
38	82.5	143	251-IGY	775-812

Order Code	Price Each
775-794	
775-800	
775-812	

Panel - '1593 Series'
(Optional End Panel & Battery Compartment)
ABS



- Ergonomically designed cases for hand-held or stand alone use
- Units with one panel include a battery compartment for 1xPP3 or 2xAAA batteries (except 21mm high versions)
- Recess area on lid is provided for membrane keypads
- End panels are replaceable for easy machining and for infra red
- Exposed panel area is 57x21
- New card reader size now available

External Dimensions			Mftrs. List No.	Order Code
H	W	D		
66	66	28	1593KGY	930-179
66	66	28	1593KBK	930-180
92	66	28	1593LGY	443-7846
92	66	28	1593LBK	443-7858
140	66	28	1593XGY	353-6324
140	66	28	1593XBK	353-6336
92	66	21	1593SBK	353-6350
92	66	28	1593PGY	930-192
92	66	28	1593PBK	930-209
112	66	28	1593QGY	930-210
112	66	28	1593QBK	930-222
140	66	28	1593YGY	353-6385
140	66	28	1593YBK	353-6397
66	66	28	1593JBK	353-6312
110	75	25	1593NGY	928-7574
110	75	25	1593NBK	928-7566

Order Code	Price Each
930-179	
930-180	
443-7846	
443-7858	
353-6324	
353-6336	

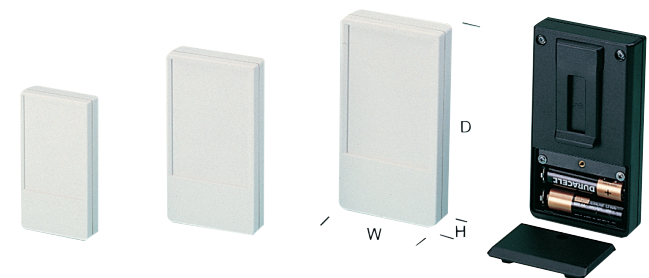
Order Code	Price Each
353-6350	
930-192	
930-209	
930-210	
930-222	
353-6385	
353-6397	
928-7574	
928-7566	

Order Code	Price Each
353-6312	

Order Code	Price Per Pack
930-234	

Order Code	Price Each
353-6282	
353-6294	

'Datec' (Battery Compartment)
ABS



- Stylish, robust and ergonomic ABS cases with top recess for membrane key pads
- Ideal for remote controls, and all types of hand held instruments
- Battery compartments: L takes 2xAA or 1xPP3 and S takes 2xN cells.
- Internal mounting pillars in the top and base for PCBs

External Dimensions		Recess Area	Mftrs. List No.	Order Code
H	W	D		
L off-white	22	65	A9072107	774-649
L black	22	65	A9072109	774-650
S off-white	16	46	A9070107	774-686
Battery clips set for 2xAA, AAA or N cells				A9190002 774-728

Order Code	Price Each
774-649	
774-650	
774-686	
774-728	

Order Code	Price Each
774-728	

REACH - SVHCs

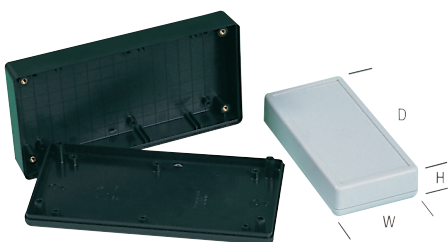
We've checked over **200,000 products** for **Substances of Very High Concern** under REACH and are continuing to check more every day. Easily identify these products online and access supporting safety datasheets when you see this logo. Visit www.element14.com to stay up-to-date.

Over 500 000 products available online

Hand-Held Enclosures - continued

'1599 Series'

IP54, ABS (Flame Retardant)



- Attractively styled hand-held cases, sealed to IP54
- Flame retardant ABS construction. Flammability rating UL94V-0
- Extra deep lid and ultra shallow base allows user flexibility
- Recessed lid panel is ideal for membrane keypads
- Two keyhole knockouts are moulded in base to facilitate wall mounting installation
- PCB guide slots and bosses are moulded in lid and base
- Base secured with 4 machine screws into brass bushings

230629

External Dimensions				Mftrs.	Price Each
H	W	D	List No.	Order Code	
Black Without Battery Door					
130	65	25	1599BBK	722-947	●
170	85	34	1599EBK	722-960	●
220	140	40.5	1599KBK	384-2605	●
220	110	44	1599HBK	722-984	●
Black With Battery Door					
130	65	25	1599HBK	353-6245	●
170	85	34	1599EBKBAT	353-6257	●
220	140	40.5	1599KKBAT	384-2691	●
Grey Without Battery Door					
130	65	25	1599BGY	722-959	●
170	85	34	1599EGY	722-972	●
220	140	40.5	1599KGY	384-2617	●
220	110	44	1599HGY	722-996	●
Grey With Battery Door					
130	65	25	1599BGYBAT	353-6269	●
170	85	34	1599EGYBAT	353-6270	●
Belt Clip					
			Black	1599CLIP	353-6282
			Grey	1599CLIPGY	353-6294

1599 Series

ABS



- Attractively styled and ergonomically designed cases
- Battery compartments accept 1 x PP3 or 2 x AA batteries
- Provided with recess area for membrane key pads
- Two piece lap joint construction to protect against dust and splashing of water
- Base secured with 4 self-tapping screws

203443

Mftrs.	Dimensions extérieures		Price Each
List No.	H x W x D (mm)	Order Code	
Grey - Without battery door			
1599BSGY	130 x 65 x 25	142-6562	●
1599ESGY	170 x 85 x 34	142-6563	●
1599KSGY	220 x 140 x 40.5	142-6565	●
1599HSGY	220 x 110 x 44	142-6566	●
Grey - With battery door			
1599BSGYBAT	130 x 65 x 25	142-6567	●
1599ESGYBAT	170 x 85 x 34	142-6568	●
1599HSGYBAT	220 x 110 x 44	142-6569	●
Belt Clip			
1599CLIPGY		353-6294	●

40 Series Hand Held Case



- ABS enclosures with 2AA, PP3 and no battery compartment
- Available in recessed or flush top finishes
- Tapered recessed area suits membrane and flush mount applications
- Internal mounting pillars for PCB's
- Innovative protective boot adds style and functionality
- Provides durability and protects against product damage
- Integrated tilt bar creates optimal viewing angle and keypad accessibility

Colour	40 Series Case		Flush Top	
	Recessed Area (85x49.5) Bone	Black	Bone	Black
Dimensions	95x60x26	95x60x26	95x60x26	95x60x26
Battery Options				
No Battery Compartment	495-3630	495-3654		495-3691
PP3 Battery Compartment	495-3642	495-3666	495-3680	495-3708

337835

Mftrs.	List No.	Order Code	Price Each
40 Series Cases			
	40-12-NO-R-BO	Bone	495-3630 ●
	40-12-9V-R-BO	Bone	495-3642 ●
	40-12-NO-R-BL	Black	495-3654 ●
	40-12-9V-R-BL	Black	495-3666 ●
	40-12-9V-F-BO	Bone	495-3680 ●
	40-12-NO-F-BL	Black	495-3691 ●
	40-12-9V-F-BL	Black	495-3708 ●
Protective Boot for 40 Series			
	40-RBT-LBL	Light Blue	495-3710 ●
	40-RBT-DBL	Dark Blue	495-3721 ●
	40-RBT-ORG	Orange	495-3733 ●
	40-RBT-YEL	Yellow	495-3745 ●
	40-RBT-RED	Red	495-3757 ●
	40-RBT-BL	Black	495-3769 ●
Accessories			
40 Series			
	Belt Clip, Black		495-3770 ●
	Belt Clip, Bone		495-3782 ●

55 Series Hand Held Case



- ABS enclosures with 2AA, 4AA, PP3, access compartment and no battery
- Tapered recessed area suits membrane and flush mount applications
- Internal mounting pillars for PCB's
- Innovative protective boot adds style and functionality
- Provides durability and protects against product damage
- Integrated tilt bar creates optimal viewing angle and keypad accessibility

Colour	55 Series Case		Protective Boot with Integrated Tilt Bar	
	Grey	Black	Colour	Fits 55 Series Case
Dimensions	125x70x24	125x70x24	Light Blue	495-3393
Battery Options				
No Battery Compartment	495-3290	495-3344	Dark Blue	495-3400
2AA Battery Compartment	495-3319	495-3368	Orange	495-3411
4AA Battery Compartment	495-3320	495-3370	Yellow	495-3423
PP3 Battery Compartment	495-3332	495-3381	Red	495-3435
			Black	495-3447

337836

Mftrs.	List No.	Order Code	Price Each
55 Series Hand Held Case			
	55-12-NO-R-GRY	495-3290	●
	55-12-2A-R-GRY	495-3319	●
	55-12-4A-R-GRY	495-3320	●
	55-12-9V-R-GRY	495-3332	●
	55-12-NO-R-BL	495-3344	●
	55-12-2A-R-BL	495-3368	●
	55-12-4A-R-BL	495-3370	●
	55-12-9V-R-BL	495-3381	●
Protective Boot			
	55-RBT-LBL	495-3393	●
	55-RBT-DBL	495-3400	●
	55-RBT-ORG	495-3411	●

Mfrs. List No.	Order Code	Price Each
Protective Boot		
55-RBT-YEL	495-3423	
55-RBT-RED	495-3435	
55-RBT-BL	495-3447	
Accessories		
Belt Clip, Black	495-3770	
Belt Clip, Bone	495-3782	

100 Series Hand Held LCD Enclosures



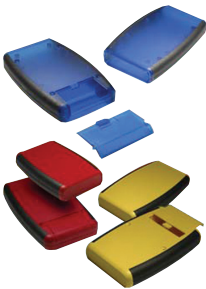
- ABS enclosures with 2 x AA, 4 x AA, PP3 and no battery option
- Recessed area on top surface for membrane keypads
- Standard LCD windows for 2 x 16 and 2" LC modules
- Innovative boot improves durability and protects against damage
- Integrated tilt bar creates optimal viewing angle and keypad accessibility

Colour	100 Series Case		Protective Boot with Integrated Tilt Bar	
	Bone	Black	Colour	Fits 100 Series Case
Dimensions	191x102x33	191x102x33	Light Blue	495-2753
LCD Window	2x16 LCD	2x16 LCD	Dark Blue	495-2765
Window Size	60x15mm	60x15mm	Orange	495-2777
Battery Options			Red	495-2790
No Battery Compartment	495-2674	495-2716	Black	495-2807
4 x AA Battery Compartment	495-2698	495-2730		
PP3 Battery Compartment	495-2704	495-2741		

337833

Mfrs. List No.	Order Code	Price Each
100 Series Cases		
101-42-NO-R-BO	495-2674	
101-42-4A-R-BO	495-2698	
101-42-9V-R-BO	495-2704	
101-42-NO-R-BL	495-2716	
101-42-4A-R-BL	495-2730	
101-42-9V-R-BL	495-2741	
100 Series Protective Boot		
100-RBT-LBL	495-2753	
100-RBT-DBL	495-2765	
100-RBT-ORG	495-2777	
100-RBT-RED	495-2790	
100-RBT-BL	495-2807	
Accessories		
100 Series		
Expander Panel, Black	495-3794	
Expander Panel, Bone	495-3800	
90 Series		
Belt Clip, Black	495-3770	
Belt Clip, Bone	495-3782	

ABS Soft Sided Hand Held Enclosure



- Ergonomically designed for hand-held comfort
- Choice of two versions (with or without battery door & compartment) - in two sizes
- Over molded in general purpose ABS plastic with a soft plastic grip
- Top cover is recessed for membrane display or keypad
- P.C. board standoffs are molded into case
- Includes removable front panel (for easy modifications) and assembly hardware
- Battery door & compartment version includes 4 battery clips (for 2 - AA batteries) and a 9 volt (PP3) battery clip

415747.511612

Mfrs. List No.	Dimensions (mm)			Order Code	Price Each
	L	W	D		
Without Battery Compartment - Grey Grip					
Black Body					
1553ABK	100	61	17	NEW 182-9823	
1553BBK	117	79	24	100-9437	
1553DBK	147	89	24	100-9439	
Grey Body					
1553AGY	100	61	17	NEW 182-9822	
1553BGY	117	79	24	100-9438	
1553DGY	147	89	24	100-9440	
With Battery Compartment - Grey Grip					

Mfrs. List No.	Dimensions (mm)			Order Code	Price Each
	L	W	D		
Black Body					
1553BBKBAT	117	79	24	100-9441	
1553DBKBAT	147	89	24	100-9443	
Grey Body					
1553BGYBAT	117	79	24	100-9442	
1553DGYBAT	147	89	24	100-9444	
Without Battery Compartment - Black Grip					
Black Body					
1553BBKBK	117	79	24	151-1156	
1553DBKBK	147	89	24	151-1160	
Translucent Blue Body					
1553BTBUBK	117	79	24	151-1157	
Yellow Body					
1553BYLBK	117	79	24	151-1159	
With Battery Compartment - Black Grip					
Black Body					
1553BBKBKBAT	117	79	24	151-1164	
Translucent Blue Body					
1553BTBUBKBAT	117	79	24	151-1165	
Yellow Body					
1553BYLBKBAT	117	79	24	151-1168	

Hand Held Enclosure



Pilot 110 - 150 Series



- Polyamide hand enclosure for automation and control engineering
- Version with handle and integrated cable exit
- Large fitting space
- Durably enclosures with high protection grade
- Special formed handle areas for mobile applications
- Prepared for cable glands and interfaces
- Ideally for switches, buttons and membrane keypads

Contents: Enclosure with handle, including cable gland M 20 x 1.5, front panel, enclosure and front panel screws and wall holder.

Mfrs. List No.	Type	Enclosure dimensions (mm)			Front panel (mm)	
		Width	Length	Height	Width	Height
29.21 10 00	Pilot 110	85	85	191	77	77
29.21 20 00	Pilot 120	115	85	191	107	77
29.21 30 00	Pilot 130	85	115	221	77	107
29.21 40 00	Pilot 140	160	105	211	152	97
29.21 50 00	Pilot 150	105	160	266	97	152

604866

Mfrs. List No.	Description	Order Code	Price Each
29.21 10 00	Pilot 110	179-9767	
29.21 20 00	Pilot 120	179-9768	
29.21 30 00	Pilot 130	179-9771	
29.21 40 00	Pilot 140	179-9772	
29.21 50 00	Pilot 150	179-9773	
Accessories			
29.00 00 80	Magnetic Holder	179-9774	

'Smart' Enclosure ABS



- Ergonomic pocket size cases for remote controls and hand-held devices
- Four sizes, XS, M, L & XL moulded in off-white and black ABS
- Contoured shape very comfortable to hold while operating controls
- Recessed area in top for mounting a membrane keypad or product label
- Battery compartments: Size M (2 x 1.5V AAA), size L & XL (2 x 1.5V AA)
- Internal screw pillars provided for mounting PCB's. XS supplied with key ring
- Robust screw-on pocket clips available as accessories

Operating temperature -40°C to 70°C

Description	External Dimensions			Mfrs. List No.	Order Code
	Width	Depth	Height		
Smart Cases					
XS black	36	58	19	A9064109F	537-1132
M off-white	47	96	24	A9066117F	537-1144
M black	47	96	24	A9066119F	537-1156
L off-white	63	140	31	A9067107F	537-1168
L black	63	140	31	A9067109F	537-1170

Hand-Held Enclosures - continued

'Smart' Enclosure - continued

ABS - continued

Description	External Dimensions			Mfrs. List No.	Order Code
	Width	Depth	Height		
XL off-white	74	168	35	A9068107F	537-1181
XL black	74	168	35	A9068109F	537-1193
Accessories					
Pocket clip off-white				A9167017	537-1200
Pocket clip black				A9167019	537-1211

Price Each

Colour	Order Code
Smart XS	
Black	537-1132
Smart M	
Off White	537-1144
Black	537-1156
Smart L	
Off White	537-1168
Black	537-1170
Smart XL	
Off White	537-1181
Black	537-1193
Pocket Clip	
Off White	537-1200
Black	537-1211

Grip-Tech Accessories

Battery Compartment



A range of battery compartments especially made for the Grip-Tech range of enclosures.



Type	Colour	Mfrs. List No.	Order Code
Small			
2 x 9V	Black	SBH-29V-BK	101-4510
4 x AA	Black	SBH-4AA-BK	101-4515
1 x 9V	Black	SBH-9V-BK	101-4517

Multipurpose

ABS



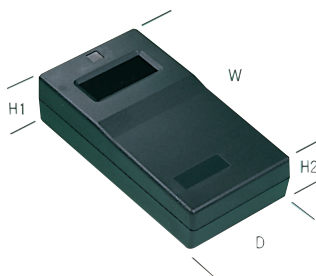
- Made of high impact ABS plastic
- Flammability rating UL 94-V0
- Two part design with tongue and groove joint between case halves
- Light grey end panels
- IP54 sealing
- Internal guide slots for vertical PCB mounting
- Bosses are provided for horizontal mounting of PCB's

- Lid and base secured by 4 x M3 countersunk screws
- Replaces Veronex range of cases

External Dimensions (mm)			Mfrs. List No.	Order Code	Price Each
H	W	D			
16	90	50	G401	152-6726	
24	90	50	G403	152-6727	
32	90	50	G404	152-6729	
30	120	60	G407	152-6731	
40	120	60	G410	152-6732	
50	120	60	G412	152-6733	
30	150	80	G413	152-6734	
45	150	80	G416	152-6735	
60	150	80	G418	152-6736	
40	190	100	G421	152-6737	
60	190	100	G422	152-6738	
80	190	100	G425	152-6739	

Window (Battery Compartment)

ABS



- Low cost, high quality calculator style cases, moulded in black ABS
- Integral battery compartment with sliding cover
- Will accommodate 2 x PP3 batteries
- Internal PCB pillars provided in both halves of case
- Small removable panel at window end of case is provided to facilitate leads etc.

External Dimensions				Max. PCB Size		Display Window
H ₁	H ₂	W	D	Top	Bottom	
37.5	33	154	81	107x71	105x56	49x19

230638

Mfrs.		Order Code	Price Each
Colour	List No.		
Black	BC4	645-758	

Hand Held Enclosure with Removable Panel

ABS



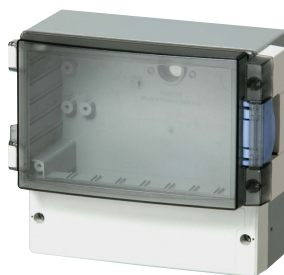
- Lap joint construction
- Complete with removable front panel
- Panels are light grey ABS
- Fixing screws and PCB mounting screw are supplied
- Designed to meet IP 65
- Flame retardant ABS according to UL 94 HB

Dimensions (mm)			Mfrs. List No.	Order Code	Price Each
H	W	D			
25	60	100	MCRH3115	152-0393	
25	70	120	MCRH3135	152-0394	
32	100	165	MCRH3165	152-0395	
40	135	185	MCRH3185	152-0396	

Wall Mount Enclosures

IP65, PC or ABS

Cardmaster 3 - Smoked Transparent Cover



The Cardmaster family of enclosures is designed to provide a safe and dependable solution to instrument packaging. Ideal for measurement, monitoring and process control equipment. Modern, durable materials are combined with an easy and reliable locking system and transparent door, to protect instrumentation and electronics. Enclosure base, terminal compartment cover, polyamide hinges, locking devices, wall fastening cover plug and mounting screws are included to make installation and use of this range of enclosures easy.

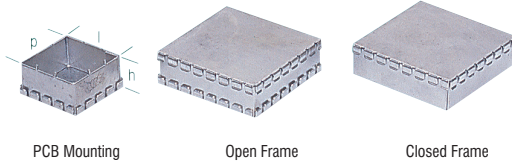
- IP 65 rated
- Impact resistant polycarbonate or ABS
- Easy and reliable locking system
- Separate compartment for terminal wiring

- Built in PCB card guides
- Certified by Fimko, EN 50298 1998, Gost R and UL Recognised

Mfrs.		Dimensions (mm)			Order Code	Price Each
List No.		H	W	D		
Polycarbonate						
PC 17/16-3		160	166	134	112-3374	
PC 21/18-3		185	213	118	112-3375	
PC 25/22-3		219	280	156	125-6250	
PC 30/25-3		260	296	129	125-6251	
ABS						
ABS 17/16-3		160	166	134	125-6253	
ABS 21/18-3		185	213	119	125-6254	
ABS 25/22-3		219	280	156	125-6255	
ABS 30/25-3		260	296	129	125-6256	

Screening Cans

RFI/EMI Screening



- Quick, efficient and cost effective specific board level screening
- PCB mounting, open frame, closed frame, screening strips and can types available
- Fingered lids provide easy access whilst maintaining good attenuation
- Bright steel construction to **BS1449 Pt.1 CR4**
- Divider strip available for PCB mounting types

224446

H	W	D	Mftrs. List No.	Order Code	Price Each
PCB Mounting					
10	20	20	PFL1T	118-1371	●
15	30	30	PFL5T	118-1372	●
15	25	50	PFL2T.	118-1374	●
15	50	50	PFL6T.	118-1375	●
25	50	75	PFL3T	118-1376	●
25	75	75	FPFL7T	118-1377	●
25	50	100	PFL4T	118-1378	●
25	75	125	PFL8T	118-1379	●
15	50	75	PFL9T.	118-1395	●
10	25	25	PFL11T	118-1396	●
15	40	40	PFL12T	118-1398	●
Open Frame					
15	50	50	FFL1T	118-1380	●
15	50	75	FFL5T	118-1381	●
25	50	100	FFL2T	118-1382	●
35	100	160	FFL3T	118-1383	●
50	100	220	FFL4T	118-1384	●
Closed Frame					
15	50	50	CFL1T	118-1386	●
25	50	75	CFL2T	118-1387	●
35	50	100	CFL3T	118-1388	●
50	100	160	CFL4T	118-1389	●
15	30	30	CFL6T	118-1392	●
15	25	50	CFL7T	118-1393	●
25	75	75	CFL8T	118-1394	●
PCB Can					
15	20	20	PCMC1	444-6641	●
15	25	25	PCMC2	444-6653	●
15	30	40	PCMC5	444-6689	●
15	40	40	PCMC7	444-6707	●
15	50	50	PCMC8	444-6719	●
20	40	60	PCMC9	444-6720	●
25	50	70	PCMC10	444-6732	●
25	75	75	PCMC11	444-6744	●
Screening Strips x 5					
232	10	0.54	SS232/10-5PK	444-6768	●
232	15	0.54	SS232/15-5PK	444-6770	●
232	20	0.54	SS232/20-5PK	444-6781	●
Divider Strip for PCB Mounting					
			SS185/25T	118-1390	●

Desktop & Instrument Enclosures

Aluminium Instrument Housing - IP54

1455 Series



- Rugged clear anodised extruded aluminium body
- Suitable for housing PCB's, equipment interfacing or hand held applications
- PCB's mount horizontally into internal slots in the body
- All except smallest size (23mm H) have a removable large side to enable easy machining
- Two end panel options:
Version 1 - 2 x anodised aluminium end panels that can be mounted into attractive black plastic bezels or directly on to body
Version 2 - 2 x black plastic end panel with integral bezel
- Hardware and 4 x self-adhesive rubber feet included with both versions

246059

External Dimensions		Mftrs.		Price Each	
H	W	D	List No.	Order Code	
Version 1 - Extrusion Colour -					
23	54	80	1455C801	427-2810	●
23	54	120	1455C1201	427-2821	●
43	78	120	1455K1201	427-2857	●
27	78	120	1455J1201	427-2833	●
30.5	103	120	1455L1201	427-2870	●
53	103	120	1455N1201	427-2900	●
27	78	160	1455J1601	427-2845	●
43	78	160	1455K1601	427-2869	●
30.5	103	160	1455L1601	427-2882	●
53	103	160	1455N1601	427-2912	●
30.5	125	160	1455P1601	151-1212	●
51.5	125	160	1455Q1601	151-1214	●
51.5	165	160	1455T1601	151-1218	●
30.5	103	220	1455L2201	427-2894	●
53	103	220	1455N2201	427-2924	●
51.5	125	220	1455Q2201	151-1223	●
51.5	165	220	1455T2201	151-1227	●
Version 1 - Extrusion Colour - Black Anodised					
23	80	54	1455C801BK	928-7787	●
27	120	78	1455J1201BK	928-7809	●
43	120	78	1455K1201BK	928-7825	●
31	120	103	1455L1201BK	928-7841	●
53	120	103	1455N1201BK	928-7876	●
43	160	78	1455K1601BK	928-7833	●
31	160	103	1455L1601BK	928-7850	●
53	160	103	1455N1601BK	928-7884	●
30.5	125	160	1455P1601BK	151-1213	●
51.5	160	125	1455Q1601BK	151-1215	●
30.5	160	165	1455R1601BK	151-1217	●
51.5	160	165	1455T1601BK	151-1219	●
53	220	103	1455N2201BK	928-7892	●
51.5	220	125	1455Q2201BK	151-1224	●
51.5	220	165	1455T2201BK	151-1228	●
Version 2 - Extrusion Colour - Clear Anodised					
19	71.7	80	1455B802	124-4177	●
23	54	80	1455C802	427-2936	●
23	54	120	1455C1202	427-2948	●
27	78	120	1455J1202	427-2950	●
43	78	120	1455K1202	427-2973	●
30.5	103	120	1455L1202	427-2997	●
53	103	120	1455N1202	427-3023	●
27	78	160	1455J1602	427-2961	●
30.5	103	160	1455L1602	427-3000	●
53	103	160	1455N1602	427-3035	●
53	103	220	1455N2202	427-3047	●
51.5	165	220	1455T2202	151-1244	●
Version 2 - Extrusion Colour - Black Anodised					
23	54	80	1455C802BK	928-7906	●
23	54	120	1455C1202BK	928-7914	●
27	78	120	1455J1202BK	928-7922	●
43	78	120	1455K1202BK	928-7949	●
30.5	103	120	1455L1202BK	928-7965	●
53	103	120	1455N1202BK	928-7990	●

FREE technical support
Our trained engineers are here to help!

- See inside front cover
- See inside front cover
- www.element14.com

Desktop & Instrument Enclosures - continued

Aluminium Instrument Housing - IP54 - continued

1455 Series - continued

External Dimensions		Mftrs.		Order Code	Price Each
H	W	D	List No.		
Version 2 - Extrusion Colour - Black Anodised					
43	78	160	1455K1602BK	928-7957	
30.5	103	160	1455L1602BK	928-7973	
53	103	160	1455N1602BK	928-8007	
53	103	220	1455N2202BK	928-8015	
51.5	165	220	1455T2202BK	151-1246	

ChocBox

Polypropylene inline Connector/Junction Box



H = 30, W = 90, D = 50mm

The patented Chocbox is a safe and simple covering solution to protect and insulate electrical connections. The Chocbox can be used as a cover, junction box or inline connector. It is designed to meet the requirements of the IEE regulations and the Health & Safety executive. i.e. insulation of bare connectors.

Flammability rating (White version) **UL94V-0**

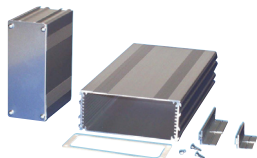
Supplied with 2 cable clamps and mounting screws.

491862.498873

Colour	Mftrs. List No.	Order Code	Price Each
White	CHOCBOX V0	151-1698	

Extruded Heat Sink Case

Anodized Aluminium



Silver anodized aluminium extruded box section that is designed to accept PCB's. The range of boxes is ideal for small circuits, R.F. amplifiers etc. This series features dovetail slots down the side which will accept a Linc-Lug mounting bracket to facilitate surface mounting of the box. One side of the box features two sets of appearance enhancing grooves. Between the set of grooves is a shallow (0.5mm deep) recess which could be used for a label.

- Manufactured from aluminium 6063
- Silver anodised finish of 5µm thickness, which can easily be painted
- Available in three different lengths
- Cases include end panels and screws which are not be fitted
- The gasket sets comprise of 2 gaskets and 8 washers
- Gasket available to seal to **IP65**

501682

Dimensions (mm)		Mftrs. List No.		Order Code	Price Each
H	W	L			
30	63.5	40	MCREAS40	154-9964	
30	63.5	80	MCREAS80	154-9965	
30	63.5	120	MCREAS120	154-9966	
30	108.5	80	MCREBS80	154-9967	
30	108.5	160	MCREBS160	154-9968	
30	108.5	220	MCREBS220	154-9969	
45	108.5	80	MCRECS80	154-9970	
45	108.5	160	MCRECS160	154-9971	
45	108.5	220	MCRECS220	154-9973	
53.5	169.8	80	MCREDS80	154-9974	
53.5	169.8	160	MCREDS160	154-9975	
53.5	169.8	220	MCREDS220	154-9976	

Accessories - Black ABS Bezels

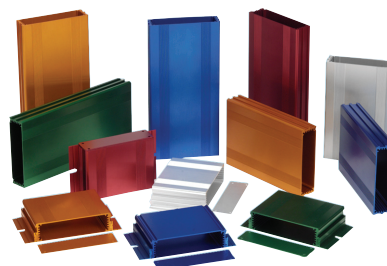
To fit:	MCREAS Cases MCZAB1	154-9977	
	MCREBS Cases MCZBB1	154-9979	
	MCRECS Cases MCZCB1	154-9980	
	MCREDS Cases MCZDB1	154-9981	

Dimensions (mm)

Price Each

H	W	L	Mftrs. List No.	Order Code
Accessories - Gasket Sets				
To fit:	MCREAS Cases	MCGEA1	154-9982	
	MCREBS Cases	MCGB1	154-9983	
	MCRECS Cases	MCGEC1	154-9985	
	MCREDS Cases	MCGED1	154-9986	
Accessories - Linc Lugs (PK of 2)				
40mm	With fitted screw	MCLPS40	154-9958	
80mm		MCLPS80	154-9961	

Aluminium Instrument Housing



All enclosures include: 1 extruded case, 2 end panels and assembly screws

- Integrated PCB guides
- Highest quality anodizing with durable protective finish
- NEMA 4 sealing with sealing kit
- High EMI/RFI protection
- Mounting flanges available

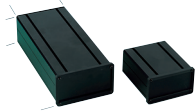
416742

Dimensions (H x W x D)	Colour	Mftrs. List No.	Order Code	Price Each
Series 1				
30x64x40	Silver	B1-040SI	101-5164	
30x64x40	Black	B1-040BK	101-5165	
30x64x40	Blue	B1-040BL	101-5166	
30x64x80	Silver	B1-080SI	101-5168	
30x64x80	Black	B1-080BK	101-5169	
30x64x80	Blue	B1-080BL	101-5170	
30x64x80	Red	B1-080RD	101-5171	
30x64x80	Green	B1-080GR	141-8573	
Series 2				
30x109x80	Silver	B2-080SI	101-5172	
30x109x80	Black	B2-080BK	101-5173	
30x109x80	Blue	B2-080BL	101-5174	
30x109x80	Red	B2-080RD	101-5176	
30x109x80	Gold	B2-080GD	141-8582	
30x109x160	Silver	B2-160SI	101-5177	
30x109x160	Black	B2-160BK	101-5178	
30x109x160	Blue	B2-160BL	101-5179	
Series 3				
45x109x80	Silver	B3-080SI	141-8593	
45x109x80	Black	B3-080BK	141-8594	
45x109x80	Blue	B3-080BL	141-8595	
45x109x80	Red	B3-080RD	141-8596	
45x109x160	Silver	B3-160SI	101-5181	
45x109x160	Black	B3-160BK	101-5182	
45x109x160	Blue	B3-160BL	101-5183	
45x109x160	Red	B3-160RD	101-5184	
45x109x160	Gold	B3-160GD	141-8599	
45x109x220	Black	B3-220BK	101-5186	
45x109x220	Red	B3-220RD	101-5189	
Series 4				
54x170x160	Silver	B4-160SI	101-5190	
54x170x160	Black	B4-160BK	101-5191	
54x170x160	Blue	B4-160BL	101-5192	
54x170x160	Red	B4-160RD	101-5193	
54x170x220	Silver	B4-220SI	101-5194	
54x170x220	Black	B4-220BK	101-5195	
54x170x220	Blue	B4-220BL	101-5196	
54x170x220	Red	B4-220RD	101-5197	
Mounting Brackets				
Length	Colour			
40mm	Black	MF40BK	101-5200	
40mm	Blue	MF40BL	101-5201	
40mm	Red	MF40RD	101-5202	
40mm	Green	MF40GR	141-8626	
80mm	Silver	MF80SI	101-5203	
80mm	Black	MF80BK	101-5204	
80mm	Blue	MF80BL	101-5206	

Dimensions (H x W x D)	Mftrs. Colour List No.	Order Code	Price Each
Mounting Brackets			
80mm	Red MF80RD	101-5207	
80mm	Gold MF80GD	141-8627	
80mm	Green MF80GR	141-8628	
NEMA 4 Sealing Kits			
Sealing Kit, Series 1	SK1	101-5208	
Sealing Kit, Series 2	SK2	101-5209	
Sealing Kit, Series 3	SK3	101-5210	
Sealing Kit, Series 4	SK4	101-5211	
Screws			
Cross head	Black STB-008	141-8631	
Torx head	Black TFB-008	141-8633	

Heat Sink Cases

Sink Box Series



- Extruded aluminium heat sink cases
- Fins on one side provide heat dissipation
- PCB's mount horizontally into internal extruded slots
- Internal and external T-Slots for further mounting options



Dimensions (mm)			Mftrs.	Order Code
Height	Width	Depth	List No.	
50.8	89.5	100	431609	124-4230
50.8	89.5	200	431610	124-4233
60	104.9	125	431611	124-4234
60	104.9	165	431621	124-4235
60	104.9	225	431622	124-4236
60	104.9	285	431623	124-4237

444612

Size Classification			Price Each
H	W	D	Order Code
Black			
51	90	100	124-4230
51	90	200	124-4233
60	90	125	124-4234
60	105	165	124-4235
60	105	225	124-4236
60	105	285	124-4237

Instrument Case - '1598 Series'

IP54, ABS (Flame Retardant)



- Attractively styled instrument cases sealed to IP54
- Flame retardant ABS construction. Flammability test to UL94V-0
- Tongue and groove system provides protection against dust and water ingress
- Two sets of vertical PCB guides provided in front and rear of case
- Supplied with two brushed aluminium panels

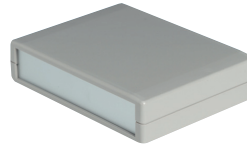


230611

External Dimensions			Price Each
H	W	D	Order Code
Black			
36	94	157	722-560
50	135	134	722-583
52	155	180	722-601
64	206	180	722-625
86	160	160	722-649
40	160	250	722-662
76	160	250	722-686
76	200	280	722-728

Desk Top Instrument Cases

ABS



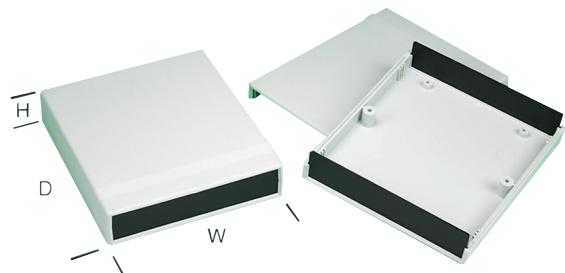
- Moulded in light grey ABS
- Flame retardant to UL 94 V-0
- Two part clam-shell construction designed to meet IP43
- Interchangeable front and rear panels
- Supplied with 2 x fixing screws and 4 x PCB mounting screws
- -40 to 75°C operating temperature

499338

Dimensions (mm)			Mftrs.	Price Each
H	W	D	List No.	Order Code
30	130	100	MCRM2015S	152-0397
30	190	140	MCRM2055S	152-0400
50	130	100	MCRM2015M	152-0399
50	190	140	MCRM2055M	152-0401
70	190	140	MCRM2055L	163-5117
75	250	180	MCRM2095M	163-5119
100	250	180	MCRM2095L	163-5120

Panel - 1598 Series

IP54, ABS



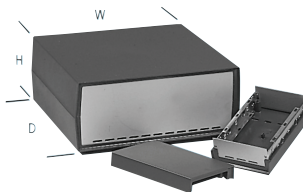
- Modern, low profile instrument cases moulded in grey ABS
- Front and rear panels moulded in black ABS
- Tongue and groove system provides protection against dust and water
- Sealed to IP54
- PC card guides and bosses provided in base and lid

203441

Mftrs.	External Dimensions	Price Each
List No.	H x W x D	Order Code
1598ASGYPBK	36 x x 94157	142-6553
1598BSGYPBK	50 x x 135134	142-6554
1598BSGYPBK	36 x x 154179	142-6555
1598CSGYPBK	52 x x 155180	142-6556
1598DSGYPBK	64 x x 206180	142-6557
1598FSGYPBK	40 x x 160250	142-6558
1598GSGYPBK	76 x x 160250	142-6559
1598HSGYPBK	40 x x 200280	142-6560
1598JSGYPBK	76 x x 200280	142-6561

Panel - Elbox

ABS



- Attractively styled cases moulded in ABS
- With 1.2mm anodised aluminium front and rear panels
- Facilities in base allow mounting of euro-cards
- Ventilation slots provided in base and rear panel
- Supplied with tilt feet.

Size	External Dimensions			Front Panel		Eurocard Size	Order Code
	H	W	D	H	W		
2	56	171	145	40	152	½ (160 x 100) or (160 x 100)	117-1621
3	77	231	181	61	212	2 (160 x 100) or (220 x 100)	117-1622
4	102	247	220	86	228	2 (160 x 100) or (233 x 160)	117-1623

230597

Mftrs.			Price Each
Size	List No.	Order Code	
2	3502	117-1621	
3	3503	117-1622	
4	3504	117-1623	

NEW! Improved back-order delivery service



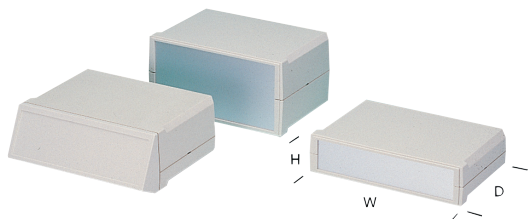
Receive e-mail updates with the exact status of the delivery, due date and despatch information of all your back-order items.
www.element14.com

Over 500 000 products available online



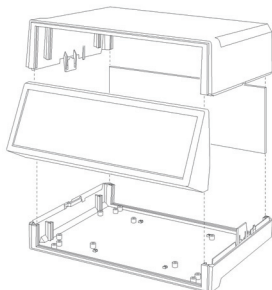
Panel - 'Motec'

PS



- Modern desk cases in high impact polystyrene with wide front and rear panel apertures
- Ideal for measurement, control, modem, peripherals and medical equipment etc.
- Large range in off-white RAL9002 with three plan sizes L, M and S, each with three heights
- Strong clip-together assembly, disassembly by screw driver only - for security
- Optional aluminium and plastic sloping panels for mounting controls, displays and membranes
- Internal mounting pillars for PCBs, and four non-slip feet provided

Motec case



Operating Temperature -40°C to +80°C

	External Dimensions			Front Panel	Mfrs. List No.	Order Code
	H	W	D			
Motec Cases						
Cases L	85	235	165	—	B3023127	774-881
Cases M	75	205	140	—	B3020127	774-911
Cases S	65	155	105	—	B3015127	774-947
Cases S	90	155	105	—	B3015137	774-959

Aluminium Front/Rear Panels

For case height 75	67 x 185 x 1.5	B3120110	775-010
For case height 85	77 x 214 x 1.5	B3123110	774-972
For case height 90	82 x 136 x 1.5	B3115120	775-060

Sloping Front Panel Moulding

For case height 65	B3115167	775-071
For case height 75	B3120167	775-034
For case height 85	B3123167	774-996

230590

Price Each

	Order Code
Motec L Cases	
Height 85	774-881 ●
Motec M Cases	
Height 75	774-911 ●
Motec S Cases	
Height 65	774-947 ●
Height 90	774-959 ●
Aluminium Front/Rear Panels	
For Case Height 75	775-010 ●
For Case Height 85	774-972 ●
For Case Height 90	775-060 ●
Sloping Front Panel Moulding	
For Case Height 65	775-071 ●
For Case Height 75	775-034 ●
For Case Height 85	774-996 ●

Panel

ABS (Flame Retardant/Impact Resistant)



- High impact textured ABS. Flame retardant to **UL94V-0**
- Available with ABS or aluminium front and back panels
- Guide slots for vertical mounting PCBs.
- PCB Mounting pillars for self tapping screws.
- Supplied with rubber feet except 109-4711
- Parts with "V" suffix are provided with venting holes

230613

External Dimensions Mfrs.

Price Each

H	W	D	List No.	Order Code
ABS Panels				
35	140	110	G738	109-4711 ●
40	225	165	G747	109-4712 ●
65	260	180	G758	109-4714 ●
75	300	200	G756V	152-6697 ●
85	260	180	G753	152-6693 ●
105	260	180	G754	152-6694 ●
Aluminium Panels				
35	140	110	G738A	152-6699 ●
65	225	165	G748A	152-6701 ●
65	260	180	G758A	109-4715 ●
75	300	200	G756AV	152-6711 ●
90	225	165	G749A	152-6702 ●
105	260	180	G754A	152-6708 ●

Aluminium Instrument Case



110 Series



- Innovative concept optimising both the case assembly as well as mounting the actual equipment
- The basic structure comprises U-shaped steel lid and base and two aluminium extruded side profiles with attached plastic brackets which

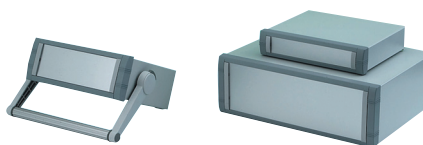
- hold the front and rear panels in place
- Side profiles include guide rails for mounting PCBs or other components
- Front brackets incorporate handles (sizes 5, 6, 7) with side covers hiding the ¼ turn assembly bolts
- Lid and base can be dismantled independent of each other
- Ventilation slots are provided towards the rear of both the lid and base
- The four smaller sizes (1, 2, 3, 4) have four non-slip feet
- The three larger sizes (5, 6, 7) are supplied with two tilting- and two non-slip feet
- Lid and base in 1mm steel sheet, painted epoxy textured, colour graphite grey
- Side profiles in 6063 aluminium extrusion, matt silver anodised
- Front/rear panels in 1070 aluminium, 1mm (1, 2, 3, 4 sizes) or 2mm thick (5, 6, 7 sizes), silver anodised
- Brackets and tilting feet moulded in high impact ABS, graphite grey colour

493088

Size	Dimensions (mm)			Price Each	
Code	H	W	D	Mfrs. List No.	Order Code
1	70	150	140	31110001	151-1423 ●
2	70	200	200	31110002	151-1424 ●
3	80	225	170	31110003	151-1425 ●
4	90	250	200	31110004	151-1426 ●
5	100	300	220	31110005	151-1428 ●
6	120	350	260	31110006	151-1429 ●
7	130	400	300	31110007	151-1430 ●

'Unimet' Enclosure

Aluminium



- Modern aluminium instrument cases in four sizes
- Stylish die-cast front bezel is assembled to the folded case body
- All models are painted light grey RAL 7035 and mid grey RAL 7040
- Three models are available with a robust tilt and swivel carry handle
- Removable rear panel is recessed to protect connectors and switches
- Pre-punched base with holes for mounting M3 screw pillars for PCB's
- An anodised aluminium front panel and four non-slip rubber feet are included
- Alternative moulded tilt feet available as accessories

Unimet Cases	External Dimensions			Mfrs. List No.	Order Code
	Width	Depth	Height		
Size 2	230	190	85	M5623105F	537-1235
Size 2H with handle	230	190	85	M5623125F	537-1247
Size 3	250	260	85	M5625105F	537-1259
Size 3H with handle	250	260	85	M5625125F	537-1260
Size 4	350	260	120	M5635205F	537-1272
Size 4H with handle	350	260	120	M5635225F	537-1284
Size 5	250	260	150	M5625305F	151-0840
Size 6	350	260	150	M5635305F	151-0841
Size 6H with Handle	350	260	150	M5635325F	151-0843
Accessories					
Tilt feet kit (4 ABS feet & 2 ABS tilt legs)				A9257205	775-460
PCB Mounting Kit (10 M3x10 screw pillars)				M5600001	537-1296

341097

Description	Order Code	Price Each
Unimet Cases		
Size 2	537-1235	
Size 3	537-1259	
Size 4	537-1272	
Size 5	151-0840	
Size 6	151-0841	
Unimet Cases with Carry Handles		
Size 2H	537-1247	
Size 3H	537-1260	
Size 4H	537-1284	
Size 6H	151-0843	
Accessories		
Tilt Feet Kit	775-460	
PCB Mounting Kit	537-1296	

METcase Aluminium Enclosure

Unicase



- Robust and versatile aluminium instrument enclosures
- Light grey (RAL 7035), powder epoxy polyester paint finish
- Simple and fast assembly
- Removable internal chassis
- PBC guide rails in the assembly extrusions
- Aluminium front and rear panels included
- Front panels recessed to protect controls
- Four push-in non-slip rubber feet included

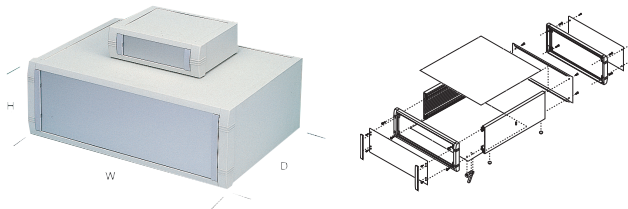


492812

Dimensions (mm)		Mfrs. List No.	Order Code	Price Each
H	W	D		
50	130	180	M5511110	151-0820
50	185	250	M5512110	151-0821
50	250	250	M5513110	151-0822
50	250	300	M5514110	151-0823
65	185	180	M5501110	151-0825
90	260	250	M5502110	151-0826
110	350	250	M5503110	151-0827
134	261	300	M5504110	151-0828
134	367	300	M5505110	151-0829
134	474	300	M5506110	151-0830

Panel - 'Mettec'

Aluminium



203449

- Modern aluminium instrument cases
- Stylish front bezel enhances the look of the equipment
- Simple and very robust assembly with die-castings and extrusions
- Integrated design with good EMC shielding (65dB at 60MHz)
- Large range of cases; all supplied ready assembled
- Internal guides for mounting PCBs and chassis
- Painted off-white RAL9002 in fine textured powder polyester
- Optional aluminium front panels with ABS trims available
- Supplied with four self-adhesive rubber feet, moulded tilt feet ordered separately

External Dimensions			Usable Front Panel Area		Order Code
H	W	D	H ₁	W ₁	
85	230	180	65.1	179.5	930-260
85	250	250	65.1	199.5	930-271
85	350	250	65.1	299.5	930-283
120	230	180	100.1	179.5	930-295
120	250	250	100.1	199.5	930-301
120	350	250	100.1	299.5	930-313
150	250	263	130.1	199.5	930-325
150	350	263	130.1	299.5	930-337

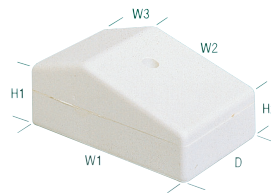
Price Each

Mfrs. List No.	Order Code
Cases	
M5723107	930-260
M5725107	930-271
M5735107	930-283
M5723207	930-295
M5725207	930-301

Mfrs. List No.	Order Code	Price Each
Cases		
M5735207	930-313	
M5725317	930-325	
M5735317	930-337	
Front Panel Kits		
M5700608 for case 85 x 230	930-362	
M5700613 for case 85 x 250	930-374	
M5700618 for case 85 x 350	930-386	
M5700610 for case 120 x 230	930-398	
M5700615 for case 120 x 250	930-404	
M5700620 for case 120 x 350	930-416	
M5700616 for case 150 x 250	930-428	
M5700621 for case 150 x 350	930-430	
Accessories		
A9257207 off-white tilt feet kit	775-472	

Miniature, Sloping

ABS



- Highly adaptable case available in black or white
- For desk, pocket or wall mounting
- Cable knockout is provided

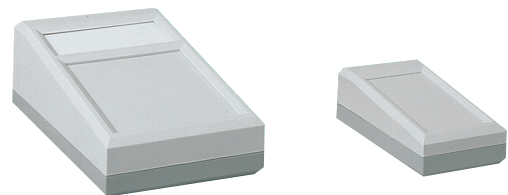
External dimensions
 H₁=22 H₂=17 W₁=71 W₂=47.5 W₃=27.5
 D=44



218885

Colour	Order Code	Price Each
Black	223-578	
White	223-580	

Slope Faced Desktop Enclosure



- Two part impact resistant polystyrene construction
- Table top and wall mounting design
- Removable end panel for connectors, indicator etc
- PCB mountings available in lid and base
- Textured lid
- Agate grey/light grey (similar RAL7038/ RAL7035) colour
- Supplied with lid fixing screws

Operating Temperature -40°C to +65°C

H ₁	H ₂	W	D	PCB Centres		Display Aperture	Order Code
				Top	Bottom		
40	28	67	125	85x50	86x48	—	117-7055
45	28	82	150	65x77x42	116x63	—	117-7056
64	35	112	200	93x88.9	153.7x88.9	87 x 38.4	117-7057

218909

H1	H2	W	D	Order Code	Price Each
Without Display Window					
40	28	67	125	117-7055	
With Display Window					
45	28	82	150	117-7056	
64	35	112	200	117-7057	

FREE technical support
 Our trained engineers are here to help!

See inside front cover

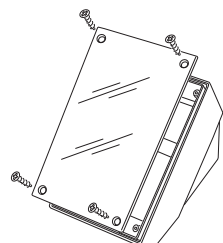
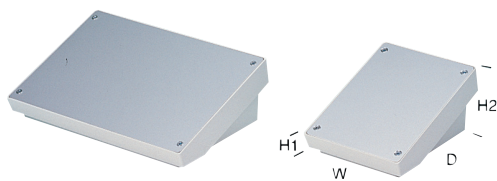
See inside front cover

www.element14.com

Desktop & Instrument Enclosures - continued

Sloped/Panel - 'Datec Terminal S & SL'

ABS/Aluminium Panel



- Modern, ergonomic, large ABS desktop housing with inclined operating area
- Ideal for small terminals, point of sale, peripherals, data collection and measuring equipment
- Two sizes, in off-white RAL9002, supplied with aluminium front panel
- Size S accepts a single Eurocard, size SL accepts a double Eurocard
- Four non-slip feet provided

Operating Temperature -40°C to +90°C

	External Dimensions				Front Panel	Order Code
	H ₁	H ₂	W	D		
Size S	24	86	140	181.2	126 x 176	774-868
Size SL	24	86	264	181.2	259.4 x 176	774-856

230578

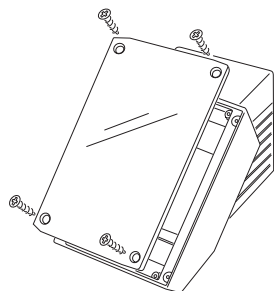
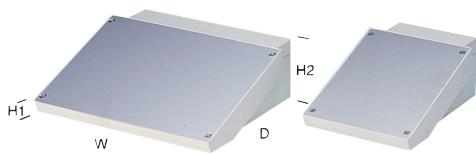
Price Each

Order Code

Size S	774-868 ●
Size SL	774-856 ●

Sloped/Panel - 'Datec Terminal M & L'

ABS/Aluminium Panel



- Modern, ergonomic, large ABS desktop housing with inclined operating area
- Ideal for terminals, point of sale, peripherals, data collection and measuring devices
- Two sizes, in off-white RAL9002, supplied with aluminium front panel
- Removable rear lid for access to internal components for set-up and servicing
- Size M accepts a single Eurocard, size L accepts large PCBs and sub-assemblies
- Four non-slip feet provided

Operating Temperature -40°C to +90°C

	External Dimensions				Front Panel	Order Code
	H ₁	H ₂	W	D		
Size M	25	101	168	272	165.4 x 217.4	774-844
Size L	25	101	302	272	299.4 x 217.4	774-832

230575

Price Each

Order Code

Size M	774-844 ●
Size L	774-832 ●

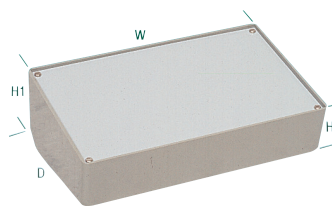
Spotted an error?



Now you can update our product information online. Simply search for the order code at www.element14.com and look for this logo to notify us of an error.

Sloped/Panel - '1000' Series

ABS/Aluminium Panel



- Moulded in grey ABS plastic with aluminium top panel
- PCB guides and bosses provided
- Supplied with four self-adhesive feet

Order Code	External Dimensions				Fixing Centres
	W	D	H ₁	H ₂	
117-1607	162	97	57	39	117x62
117-1608	215	130	72	47	170x85

230572

Price Each

Order Code

117-1607 ●
117-1608 ●

Sloped Consoles - Abox

ABS/Aluminium Panel



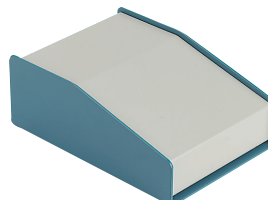
- Sloping front desk top cases moulded in grey ABS
- With 2mm thick natural coloured anodised aluminium panels
- Base mouldings incorporate bosses for mounting PCBs and eurocards
- Can easily be drilled or punched
- Supplied with non-slip push-on PVC feet
- Withstands continuous heat up to 85°C

230574

External Dimensions Mftrs. Price Each

H ₁	H ₂	W	D	Mftrs. List No.	Order Code
Without Raised Roof					
62	33	190	120	2801	117-1612 ●
78	33	262	185	2802	117-1613 ●
85	35	400	230	2804	117-1615 ●
With Raised Roof					
117	33	260	185	2803	117-1614 ●
145	35	400	230	2805	117-1617 ●

Aluminium Console



- Easy to machine aluminium top and case (2mm thick)
- Case is finished with a textured blue powder paint
- Top panel is finished in a smooth light grey/beige powder paint

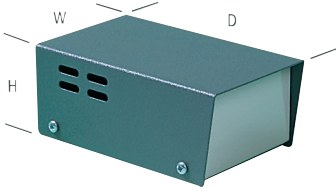
Mftrs. List No.	H ₁	H ₂	W	D	Slope Panel	Order Code
1456CE2WHBU	51	28	102	140	84 x 102	353-7006
1456FE2WHBU	51	28	165	140	84 x 165	353-7018
1456KH3WHBU	76	33	254	211	160 x 254	353-7020
1456PL3WHBU	76	33	356	287	160 x 356	353-7031
1456FE3WHBU	76	28	165	140	94 x 165	353-7043
1456KE3WHBU	76	28	254	140	94 x 254	353-7055
1456FG4WHBU	102	28	165	183	145 x 165	353-7067
1456KG4WHBU	102	28	254	183	145 x 254	353-7079
1456KK4WHBU	102	28	254	259	145 x 254	353-7080
1456PK4WHBU	102	28	356	258	145 x 356	353-7092
1456RK4WHBU	102	28	432	259	145 x 432	353-7109

230581

Price Each

Mftrs. List No.	Order Code
1456CE2WHBU	353-7006 ●
1456FE2WHBU	353-7018 ●
1456KH3WHBU	353-7020 ●
1456PL3WHBU	353-7031 ●
1456FE3WHBU	353-7043 ●
1456KE3WHBU	353-7055 ●
1456FG4WHBU	353-7067 ●
1456KG4WHBU	353-7079 ●
1456KK4WHBU	353-7080 ●
1456PK4WHBU	353-7092 ●
1456RK4WHBU	353-7109 ●

Small Instrument Steel



- Mild steel cases coated in two tone stove enamel paint
- Cowl type cover reduces glare from overhead lighting
- Cooling vents in cover make them ideal for power supplies, controllers, meters etc.

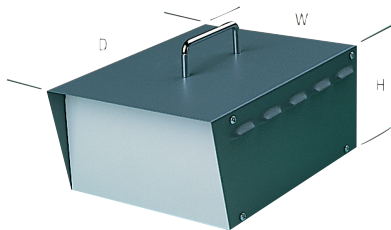
External Dimensions			Material Thickness		Dark Grey/Light Grey
H	W	D	Top Cover	Base	Order Code
55	80	135	0.91 (20 SWG)	1.22 (18 SWG)	518-852
75	97	180	0.91 (20 SWG)	1.22 (18 SWG)	518-864
95	125	220	0.91 (20 SWG)	1.22 (18 SWG)	518-876

218889

Price Each

Mfrs. List No.	Order Code
Dark Grey/Light Grey	
512-0900	518-852
511-0900	518-864
513-0900	518-876

Instrument Steel



- Two part mild steel cases for portable or bench top equipment
- Top cover provides protection for front and rear panels
- Ventilation louvres on sides aid cooling

External Dimensions			Material Thickness		Handle Height	Dark Grey/Light Grey
H	W	D	Top Cover	Base	Height	Order Code
120	200	282	1	1.2	37	518-888
160	300	232	1	1.2	37	518-890

218890

Price Each

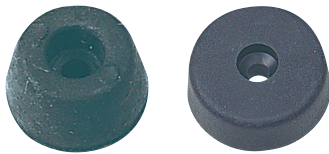
Mfrs. List No.	Order Code
518-0910	518-888
518-0920	518-890

Enclosure Accessories

Instrument Case Feet



Screw Fixing



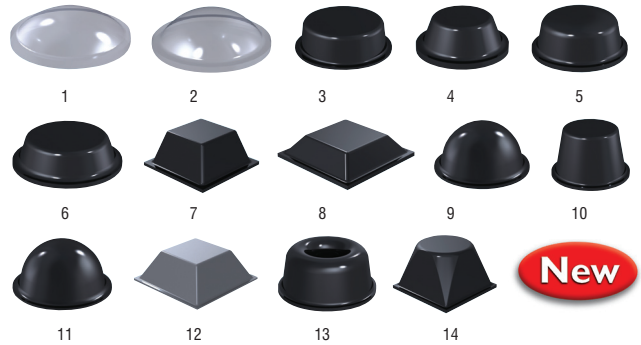
- Type 1 - Soft rubber feet. Ideal for use on instrument cases etc.
- Type 2 - Moulded in hard rubber. Bracing members prevent pull-through of fastening screw

218852

100 Per Pack Mtg. Price Per Pack

Type	H	Dia.	Hole Dia.	Order Code
Type 1				
10	15.9	3.5		320-237
10	19.1	3.5		320-249
10	22.2	3.5		320-250
20 Per Pack				
Type 2				
12.5	37.5	5.5		606-017

Stick On Feet



- Self-Adhesive feet
- Manufactured from polyurethane
- Clean gloss finish

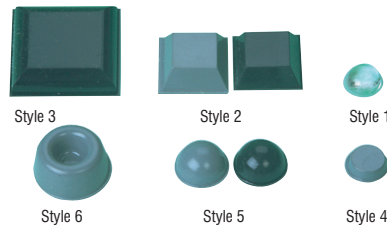
Mfrs. List No.	Height (mm)	Dimensions (mm)	Colour	Style	Pack Qty	Order Code
PD.2008C	2.2	∅8	Clear	1	140	180-0873
PD.2010C	3.1	∅10	Clear	2	48	180-0874
PD.2020BL	6.2	∅20	Black	3	28	180-0876
PD.2075BL	3	∅8	Black	4	60	180-0872
PD.2115BL	5	∅11.1	Black	5	55	180-0839
PD.2115G	5	∅11.1	Grey	5	55	180-0857
PD.2115C	5	∅11.1	Clear	5	55	180-0858
PD.2125BL	3.5	∅12.7	Black	6	60	180-0862
PD.2125G	3.5	∅12.7	Grey	6	60	180-0864
PD.2126BL	5.7	12.6 x 12.6	Black	7	40	180-0866
PD.2126G	5.7	12.6 x 12.6	Grey	7	40	180-0867
PD.2127BL	2.9	12.7 x 12.7	Black	8	80	180-0859
PD.2127G	2.9	12.7 x 12.7	Grey	8	80	180-0860
PD.2150BL	7.9	∅16	Black	9	40	180-0870
PD.2150G	7.9	∅16	Grey	9	40	180-0871
PD.2164BL	10.2	∅16.5	Black	10	40	180-0878
PD.2190BL	9.5	∅19	Black	11	42	180-0865
PD.2205BL	7.5	20.5 x 20.5	Black	12	36	180-0868
PD.2205G	7.5	20.5 x 20.5	Grey	12	36	180-0869
PD.2210BL	10.1	∅22.3	Black	13	48	180-0861
PD.2210G	10.1	∅22.3	Grey	13	48	180-0877
PD.3206BL	13.2	20.6 x 20.6	Black	14	24	180-0879

605448

Mfrs. Price Per Pack

List No.	Pack Qty	Style	Order Code
PD.2008C	140	1	180-0873
PD.2010C	48	2	180-0874
PD.2020BL	28	3	180-0876
PD.2075BL	60	4	180-0872
PD.2115BL	55	5	180-0839
PD.2115G	55	5	180-0857
PD.2115C	55	5	180-0858
PD.2125BL	60	6	180-0862
PD.2125G	60	6	180-0864
PD.2126BL	40	7	180-0866
PD.2126G	40	7	180-0867
PD.2127BL	80	8	180-0859
PD.2127G	80	8	180-0860
PD.2150BL	40	9	180-0870
PD.2150G	40	9	180-0871
PD.2164BL	40	10	180-0878
PD.2190BL	42	11	180-0865
PD.2205BL	36	12	180-0868
PD.2205G	36	12	180-0869
PD.2210BL	48	13	180-0861
PD.2210G	48	13	180-0877
PD.3206BL	24	14	180-0879

Stick On Feet 'BumpOn™'



- Durable, skid-resistant polyurethane moulding
- Easy attachment with pressure sensitive adhesive
- Non-marking, non-slip resistant to most solvents.

Order Code	Mfrs. List No.	H	Dia.	Colour	Style
116-5067	SJ5302TRANS	2.2	7.9	Transparent	1
116-5068	SJ5306TRANS	3.8	9.5	Transparent	1
116-5071	SJ5303TRANS	5	11.1	Transparent	1
116-5063	SJ5312TRANS	3.5	12.7	Transparent	1
116-5072	SJ5008BLACK	3.1	12.7x 12.7	Black	2
116-5066	SJ5018BLACK	5.8	12.7x12.7	Black	2
116-5064	SJ5018GREY	5.8	12.7x12.7	Grey	2
116-5079	SJ5023BLACK	7.6	20.6x20.6	Black	2
116-5080	SJ5023GREY	7.6	20.6x20.6	Grey	2
116-5081	SJ5705BLACK	6.1	x 31.75x31.75	Black	3
116-5061	SJ5076BLACK	2.8		Black	4

Over 500 000 products available online



Enclosure Accessories - continued

Stick On Feet 'Bumpon'TM - continued

Order Code	Mfrs. List No.	H	Dia.	Colour	Style
116-5073	SJ5012BLACK	3.5	12.7	Black	4
116-5083	SJ5780BLACK	5.5	20	Black	4
116-5074	SJ5003BLACK	5	11.1	Black	5
116-5075	SJ5003GREY	5	11.1	Grey	5
116-5076	SJ5027BLACK	7.9	16	Black	5
116-5077	SJ5027GREY	7.9	16	Grey	5
116-5078	SJ5017BLACK	9.6	19	Black	5
116-5065	SJ5009GREY	10.1	22.3	Grey	6

218850

Quantity Per Pack	Order Code	Price Per Pack
144	116-5067	
48	116-5068	
56	116-5071	
56	116-5063	
80	116-5072	
40	116-5066	
40	116-5064	
36	116-5079	
36	116-5080	
10	116-5081	
56	116-5061	
56	116-5073	
25	116-5083	
56	116-5074	
56	116-5075	
40	116-5076	
40	116-5077	
40	116-5078	
48	116-5065	

Tilt Feet - General Purpose



- Tilt feet kits suitable for all types and makes of plastic and metal enclosures
- Three colours moulded in ABS. Foot height 16mm (inc. insert)
- Kit comprises 4 foot mouldings, 4 rubber non-slip inserts, 2 tilt legs, 4 fixing screws and a drilling template

Operating temperature -40C to 90C

224467

Mfrs. List No.	Colour	Order Code	Price Per Pack
A9257205	Grey RAL7035	775-460	
A9257207	Off White RAL9022	775-472	
A9257209	Black RAL9005	775-484	

Powerful and affordable solutions for PCB design



CadSoft's EAGLE software offers a user-friendly, powerful and affordable solution for PCB design, including three modules embedded in a single user interface; Schematic Capture, Board Layout, and Autorouter. Find out more at www.element14.com