



Artistic Space Beyond Display

Dual-view flat OLED Signage 55EH5C



With cutting-edge OLED technology, LG Electronics introduces an innovative Dual-view Flat OLED Signage that has perfect picture quality and revolutionary pencil-thin design, adding artistic value to its display functionality.

Why OLED Technology

Perfect Black

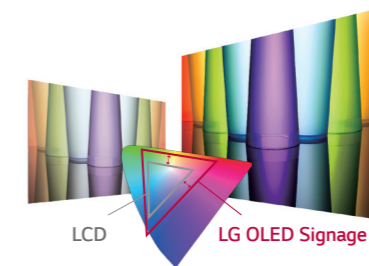
Limitless contrast and deepest black
Self-lighting pixels switch off completely to reproduce black. No light bleed. Absolute black offers infinite contrast.



LCD LG OLED Signage

Perfect Color

Accurate & stable color reproduction
Self-lighting pixels bring colors to life with superb accuracy.



LCD LG OLED Signage

Perfect Viewing Screen

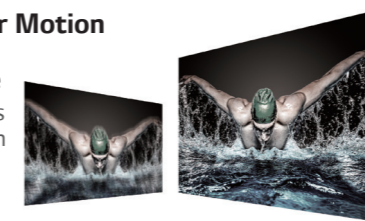
Wide viewing angle
LG OLED Signage delivers awe-inspiring picture quality across the entire screen, even from wide viewing angles.



LCD LG OLED Signage

Crisp, Clear Motion

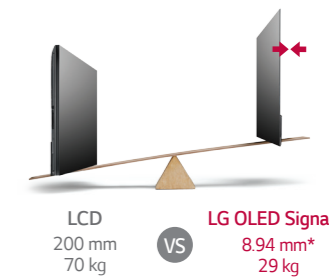
Faster response time
LG OLED Signage provides 5,000 times faster motion picture response time, for perfectly clear images without blurring.



LCD LG OLED Signage

Perfect Design

Slim and light
With just two layers, the LG OLED Signage Display is unbelievably light-weight and thin.



LCD 200 mm 70 kg VS LG OLED Signage 8.94 mm* 29 kg

* Edge depth

Download LG Commercial Display Mobile App



Learn more www.lg.com/b2b or www.lgcommercial.com

YouTube [youtube.com/c/LGCommercialDisplay](https://www.youtube.com/c/LGCommercialDisplay)

LG may make changes to specifications and product descriptions without notice.
Copyright © 2016 LG Electronics Inc. All rights reserved. "LG Life's Good" is a registered of LG Corp.
The names of products and brands mentioned here may be the trademarks of their respective owners.



Artistic Space Beyond Display

Dual-view flat OLED Signage 55EH5C



Screen Size
55"

- 55EH5C
- Brightness : 400 cd/m² (APL 25%) *Average Picture Level
 - Bezel : 2, 2, 2, 2 mm (U, B, L, R *Off-bezel)
 - Depth : 7.94 mm
 - Interface : HDMI / DP / DVI / RS232C / RJ45 IR In / USB / Audio
 - SuperSign W/Lite/C/N



Key Features

Two Displays for Multi-Use

Two-way media experience and space saving thanks to innovative slim depth.



Three Types of Installation

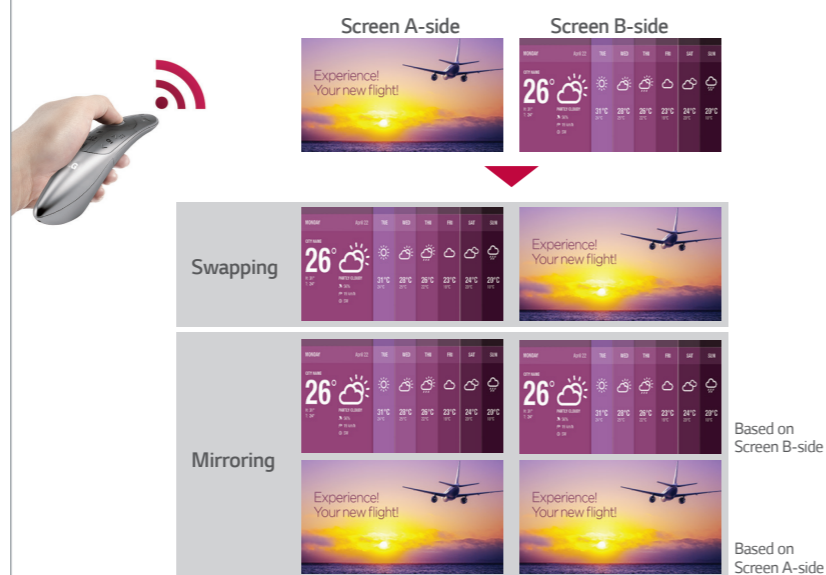
Dedicated accessories available for ceiling, stand and wall mount.



- **Built-in**
Monitor Screen, Cables, Signage Box
- **Sold separately**
Pipe, ceiling mounting bracket(cover included), wall mounting bracket(cover included), stand, signage box cover, rotating motor

Dual Screen Mode (Swapping/Mirroring)

Dual-view screens are controlled with remote controller. Swapping and mirroring of content are possible by just pressing a button.



Specifications

		55EH5C
PANEL	Screen Size	55"
	Panel Technology	OLED
	Aspect Ratio	16 : 9
	Native Resolution	1,920 x 1,080 (FHD)
	Brightness	100/400 cd/m ² (APL 100% / 25%) * Average Picture Level
	Contrast Ratio	100,000 : 1
	Viewing Angle(H x V)	178 x 178
	Response Time	1 ms (G to G), 8 ms (MPRT)
	Surface Treatment	Hard coating (2H), Anti-reflection treatment of the front polarizer (Reflectance Typ.1.0%)
	Life time(Min.)	30,000 hrs
Operation Hours	18 hrs / 7 days (moving video only)	
Orientation	Portrait & Landscape	
CONNECTIVITY	Input	HDMI (1+1), DP (1+1), DVI-D (1+1)
	Output	Audio (1+1)
CONNECTIVITY	External Control	RS232C (1+1), RJ45 (1+1), IR Receiver, USB 2.0 (2), USB 3.0 (2)
	Bezel Color	Silver
	Bezel Width	2, 2, 2, 2 mm (U, B, L, R *Off-bezel)
PHYSICAL SPECIFICATION	Dimension(W x H x D)	Head : 1,227.6 x 702.7 x 7.94 mm (Edge depth : 8.94 mm) Signage Box : 470.1 x 402.8 x 75 mm
	Weight	Head : 21 kg / Signage Box : 8 kg
	Carton Dimensions(W x H x D)	1,344 x 987 x 269 mm (Inner)
	Packed Weight	36.5 kg
SPECIAL FEATURES	Temperature Sensor, Cooling FAN, Source Selection, DPM Select, Energy Saving, Motion Eyecare, Power Indicator On/Off, File Play with USB, Internal Memory (8 GB), Wi-Fi Dongle Ready, USB Cloning, Contents Scheduling, Local time auto setting, Fail over, Mirroring, SoftAP, BEACON	
ENVIRONMENT CONDITIONS	Operation Temperature	0°C to 40°C
	Operation Humidity	10% to 80%
POWER	Power Supply	100-240V~, 50/60Hz
	Power Type	Built-In Power
POWER CONSUMPTION	Typ.	375 W
	DPM	3 W
	Power off	0.5 W
STANDARD (CERTIFICATION)	Safety	UL / cUL / CB / TUV / KC
	EMC	FCC Class "A" / CE / KCC
	ErP / Energy Star	Yes / NA
MEDIA PLAYER COMPATIBILITY	OPS Type Compatible	Yes
	External Media Player Attachable	Yes
SOFTWARE COMPATIBILITY	SuperSign W/Lite	Yes
	SuperSign C	Yes
ACCESSORY	Basic	Remote Controller (included 2ea batteries), Power Cord, QSG, Mini HDMI Cable (3M x 2ea, for connection between head and signage box), Power Harness Cable (3M x 2ea, for connection between head and signage box), Regulation Book, Phone to RS232C Gender, Jack Cover, Signage Box Mounting Bracket
	Optional	OPS Kit (KT-OPSA), Fixed Ceiling Mount Kit (ACC-CF-EH5C), Rotational Ceiling Mount Kit (ACC-CR-EH5C), Wall Mount Kit (ACC-W-EH5C), Stand Kit 1 (ACC-S-EH5C), Stand Kit 2 (ACC-S1-EH5C), Signage Box Cover (ACC-C-EH5C)

※ 1+1 means 1 input for 1 each screen