

imageCLASS D1650/D1620

Black and White | Compact | Multifunction

Print up to 45 ppm

Print up to 8-1/2" x 14"

2,300-sheet maximum paper capacity

Three-year limited warranty standard

Designed for small to mid-size workgroups, the imageCLASS D1650/D1620 balances speedy performance, minimal maintenance, and the ability to expand paper capacity for busy groups. A 5" color touchscreen delivers an intuitive user experience and can be customized by a device administrator to simplify many daily tasks. A legal-sized platen glass accommodates diverse scanning and copying needs.



imageCLASS D1650 shown



WORKFLOW EFFICIENCY

- Supports certain mobile solutions for printing and scanning.
- Scan and convert documents to searchable digital files through a single-pass, duplex document feeder.
- Designed for smaller print jobs with first-print-out time as fast as 6.2 seconds.



SECURITY FEATURES

- Helps mitigate risk of confidential information loss, as documents are only stored in short-term memory.
- Security settings can be set behind an administrator log-in.
- Control device access, restrict function use, and oversee usage behavior with standard Department ID Management.



COST MANAGEMENT

- Service parts are designed for machine's life cycle to help minimize need for proactive maintenance and reduce service calls.
- Out-of-box, standard, two-sided printing plus the ability to print multiple pages onto one helps to reduce paper consumption.



USABILITY

- 5" intuitive color touchscreen with smartphone-like usability.
- A unique, customized device experience with Application Library.
- Create Wi-Fi® Direct hotspot from the printer to establish direct connection to compatible mobile device(s) without the need for external router.



QUALITY AND RELIABILITY

- Canon's signature reliability and engine technologies help keep productivity high and minimize the impact on support resources.
- Designed to achieve maximum uptime with status notifications to help keep supplies replenished.
- Intuitive animations for common tasks like consumables replacement.



SUSTAINABILITY

- A combination of fusing technologies and low-melting-point toner minimizes power requirements and helps achieve low energy consumption.
- Encourage environmentally conscious work practices by enabling settings that can help save paper and energy.
- ENERGY STAR® certified and rated EPEAT® Silver!

KEY FEATURES



EASY TO USE WITH APPLICATION LIBRARY

Unique to the Canon imageCLASS product line, the Application Library platform allows for one-touch button creation of seven key functions: Print Template, Standby Slide (screen saver), Scan-to-Preset Destination, ID Card Copy, Consumables Information, Copy (Eco), and Copy (Bleed Reduce).



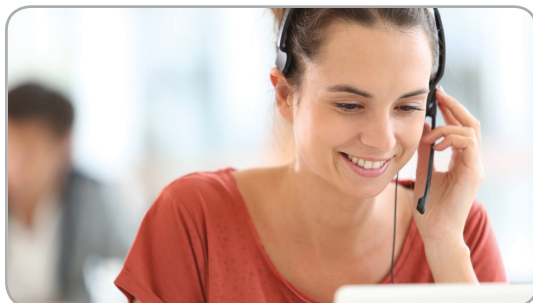
MOBILE-FRIENDLY DEVICE ACCESS

From application-based to cloud-based to device native, the imageCLASS D1650/D1620 models offer a variety of methods for printing from a mobile phone or tablet across most iOS and Android devices. The Canon PRINT Business application, which supports both platforms, offers access to additional device settings as well as the ability to scan from the printer to a mobile phone or tablet.



FAST, SINGLE-PASS DUPLEX SCANNING

The imageCLASS D1650/D1620 models leverage a single-pass document feeder for two-sided scanning at up to 70 images per minute (ipm) in black and white or up to 26 ipm in color. Scanned files can be converted into multiple file formats, including Hi-Compression PDF and Searchable PDF (OCR).



100% U.S.-BASED SERVICE AND SUPPORT

From cutting-edge technology to industry-leading response times, Canon U.S.A. takes pride in delivering complete customer satisfaction. Canon's award-winning, 100% U.S.-based, friendly, and knowledgeable Customer Service team provides expert assistance for every level of experience. The imageCLASS D1650/D1620 devices come with a three-year limited warranty, giving you the support, peace of mind, and value your business deserves.



SPECIFICATIONS

Main Unit

Core Functions

Standard: Print, Copy, Scan, Send, Fax (D1650 only)

Item Code

D1650: 2223C023
D1620: 2223C024

Processor

Canon Custom Processor

Control Panel

5" Color Touch Panel

Memory

1 GB

Standard Interface Connection

USB 2.0 x2 (Host), USB 2.0 x1 (Device) High-Speed,
10/100/1000Base-T Ethernet (Network), Wi-Fi
802.11b/g/n, Wi-Fi® Direct Connection, Near Field
Communication (D1650 only)

Paper Capacity (Letter, 20 lb. Bond)

Standard: 650 Sheets
Maximum: 2,300 Sheets

Paper Sources (Letter, 20 lb. Bond)

Standard: 550-sheet Paper Cassette, 100-sheet
Stack Bypass

Optional (up to
three): 550-sheet Paper Cassettes
(Paper Feeder PF-C1)

Paper Output Capacity (Letter, 20 lb. Bond)

Standard: 150 Sheets

Supported Media Types

Cassettes: Thin, Plain, Recycled, Color, Thick, Bond
Stack Bypass: Thin, Plain, Recycled, Color, Thick, Bond,
Label, Envelope (10 Envelopes)

Supported Media Sizes

Cassettes: Letter, Legal, Statement, Executive
Custom (Min. 4.1" x 5.8" to Max. 8.5" x 14")
Stack Bypass: Letter, Legal, Statement, Executive
Envelope: COM10, Monarch, C5, DL
Custom (Min. 3" x 5" to Max. 8.5" x 14")

Supported Media Weights

Cassettes: 16 lb. Bond to 32 lb. Bond (52 to 120 g/m²)
Stack Bypass: 16 lb. Bond to 53 lb. Bond (52 to 199 g/m²)

Warm-up Time

From Power On: 14 Seconds or Less
From Sleep: 4 Seconds or Less
Mode:

Dimensions (W x D x H)

Standard: 19.5" x 18.3" x 17.8"
(Desktop): (494 mm x 464 mm x 452 mm)

Installation Space (W x D x H)

Standard: 23.4" x 39.6" x 28.6"
(Desktop): (594 mm x 1005 mm x 724 mm)
Fully Configured: 24.0" x 39.6" x 60.9"
(634 mm x 1005 mm x 1547 mm)

Weight

Machine Only: Approx. 41.9 lb. (19.0 kg)
Boxed Weight: Approx. 54.0 lb. (24.8 kg)

Print Specifications

Printing Method

Laser Beam Printing

Print Speed²

Up to 45 ppm (Letter); Up to 36 ppm (Legal)

First-Print-Out Time

Approx. 6.2 Seconds

Recommended Monthly Page Volume

2,000 - 7,500 Pages

Print Resolution (dpi)

600 x 600

Standard Page Description Languages

UFR II, PCL®6, PCL®5, Adobe PostScript 3®

Double-Sided Printing

Automatic (Standard)

Direct Print

Available from USB Memory (JPEG, TIFF, PDF)

Printing from Mobile and Cloud-based Services³

Apple® AirPrint®, Canon PRINT Business, Mopria™ Print
Service, Google Cloud Print™⁴

Fonts

PCL: 93 Fonts
PS: 136 Fonts

Operating System

UFR II/
PCL/PS: Windows® 7/Windows 8.1/Windows 10/
Windows Server 2008/Windows Server
2008 R2/Windows Server 2012/Windows
Server 2012 R2/Windows Server 2016/Mac
OS X v10.8.5 (or later)

Copy Specifications

Copy Speed

Up to 45 ppm (Letter); Up to 36 ppm (Legal)

First-Copy-Out Time (Letter)

Approx. 6 Seconds

Copy Resolution (dpi)

600 x 600

Copy Size

Platen and ADF: Up to Legal

Multiple Copies

Up to 999 Copies

Magnification

25% - 400% (1% Increments)

Preset Reductions

25%, 50%, 64%, 78%

Preset Enlargements

129%, 200%, 400%

Copy Features

Paper Setting, Favorite Settings, Two-sided, Original Type
Selection, Cancel, N-on-1, Density Adjustment, Sharpness,
Erase Frame, Collate, Copy ID Card

Scan Specifications

Type

Single-Pass Duplexing Automatic Document Feeder

Document Feeder Paper Capacity

50 Sheets (20 lb. Bond)

Document Feeder Supported Media Sizes

Legal, Letter, Statement

Document Feeder Supported Media Weights

Single and Double-sided scanning: 13-28 lb. Bond (50-105 g/m²)

Platen Acceptable Originals

Sheet, Book

Pull Scan

ScanGear MF for TWAIN, WIA, and ICA

Supported OS

Windows 7/Windows 8.1/Windows 10/Windows Server 2008/
Windows Server 2008 R2/Windows Server 2012/Windows
Server 2012 R2/Windows Server 2016/ Mac OS X v10.8.5
(or later)

Scan Resolution (dpi)

300 x 600, 600 x 600

Scan-to-Mobile Devices

Canon PRINT Business

Scan Speed (Letter)

Single-sided: Up to 13/38 ipm (300 x 600 dpi) (Color/BW)
Double-sided: Up to 26/70 ipm (300 dpi) (Color/BW)

Memory Media

Standard USB Memory (JPEG, TIFF, PDF)

Send Specifications

Destination

Email/Internet FAX (SMTP), SMB, FTP, Super G3 FAX

Address Book

LDAP (50)/Local (300)/Speed dial (281)

Send Resolution (dpi)

600 x 600 (Pull Scan), 196 x 204 (iFax), 300 x 300 (Other)

Communication Protocol

File: FTP, SMB
Email/iFax: SMTP, POP3, iFax (Simple)

File Format

Standard: TIFF, JPEG, PDF (Compact, Searchable)
Optional: PDF (Encrypted, Digital Signature)

Fax Specifications (D1650 only)

Modem Speed

Super G3: 33.6 kbps
G3: 14.4 kbps

Compression Method

MH, MR, MMR, JBIG

Resolution (dpi)

400 x 400, 200 x 400, 200 x 200, 200 x 100

Sending/Recording Size

Statement to Legal

Fax Memory

Up to 512 Pages

Speed Dials

Max. 281

Group Dials/Destinations

Max. 299 Dials

Sequential Broadcast

Max. 310 Addresses

Memory Backup

Yes

Fax Features

RX Mode, Resolution, Two-sided Original, Density,
Sharpness, Favorite Settings, Duplex Fax

Security Specifications

Authentication

Standard: Department ID Authentication

Network

Standard: IP/MAC Address Filtering, IPSEC, TLS
Encrypted Communication, SNMP V3.0, IEEE
802.1X, IPv6, SMTP Authentication, POP
Authentication before SMTP

Document

Standard: Secure Print
Optional: Encrypted PDF, User and Device Signatures

Wi-Fi Authentication Methods

Wi-Fi
Infrastructure: WEP 64/128 bit, WPA-PSK (TKIP/AES),
Mode: WPA2-PSK (AES)
Wi-Fi Access
Point: WPA2-PSK (AES)

Environmental Specifications

Operating Environment

Temperature: 50 to 86° F
Humidity: 20 to 80% RH (no condensation)

Power Requirements

AC 120-127 V:7.1 A, 60 Hz

Power Consumption

Maximum: Approx. 1390 W
Standby: Approx. 17 W
Sleep Mode: Approx. 0.9 W
Typical: 0.47 kWh

Electricity
Consumption
(TEC) Rating:

Standards

ENERGY STAR® Qualified, Rated EPEAT Silver

CONFIGURATION AND ACCESSORIES



Accessories

Card Reader*

Copy Card Reader-F1
(Item No.: 4784B001)
Department ID authentication with Canon magnetic stripe cards

* Attachment kit required.

Print Accessories

Barcode Print Kit-E1
(Item No.: 5143B001)
Installs bar code fonts for bar code printing

Send PDF Security Kit-E1
(Item No.: 9594B002)
Send encrypted PDFs and add digital device signatures

Control Interface Kit-C1
(Item No.: 5145B001)
Connects third-party card reader or coin operator system to device

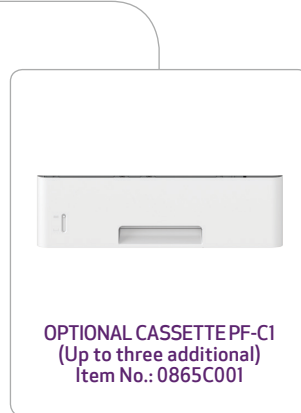
Extended Service Packs

Canon eCarePAK (Exchange/Carry-In)**
Canon extended service plans extend standard three-year limited warranty⁵ support to cover additional one to two years.

D1650:
One-Year: 5707B050
Two-Year: 5707B051

D1620:
One-Year: 5707B046
Two-Year: 5707B047

** Replacement model may be new or refurbished quality.



GENUINE® CONSUMABLES

Always look for the Canon anti-counterfeiting hologram on your GENUINE Canon product packaging.

- **Standard Cartridge 121**
(Item No.: 3252C001)
Yield up to 5,000 Pages



Use of Canon GENUINE toner cartridges helps provide longer equipment life, high yields, reliable performance, high-quality output, and minimal jamming or issues.

¹ For current EPEAT rating (Gold/Silver/Bronze), please visit www.epeat.net.

² Print speed is based on internal testing. Print speed may vary, depending on the number of copies selected as well as the settings for size, type, and orientation of paper.

³ Canon PRINT Business is a free app available on the App Store® and Google Play™ Store. For more information, including compatibility, please visit <https://www.usa.canon.com/mobile-app>. Please see the respective websites for Apple AirPrint and Mopria Print Service for compatibility and additional information.

⁴ Subscription to a third-party cloud service required. Subject to third-party cloud service providers' terms and conditions.

⁵ Warranty program is subject to certain conditions and restrictions. See warranty card for details.

⁶ Check website for updates.

USA.CANON.COM



As an ENERGY STAR partner, Canon U.S.A., Inc. has qualified these models as meeting the ENERGY STAR energy efficiency criteria through an EPA recognized certification body. ENERGY STAR and the ENERGY STAR mark are registered U.S. marks. Wi-Fi is a registered trademark of the Wi-Fi Alliance. EPEAT is a registered trademark of EPEAT, Inc. in the U.S. and other countries. Canon, imageCLASS, and the GENUINE logo are registered trademarks of Canon Inc. in the United States and may also be registered trademarks or trademarks in other countries. Canon products offer certain security features, yet many variables can impact the security of your devices and data. Canon does not warrant that use of its features will prevent security issues. Nothing herein should be construed as legal or regulatory advice concerning applicable laws; customers must have their own qualified counsel determine the feasibility of a solution as it relates to regulatory and statutory compliance. All other referenced product names and marks are trademarks of their respective owners. Specifications and availability subject to change without notice. Not responsible for typographical errors.

©2019 Canon U.S.A., Inc. All rights reserved.

0215W897
1019R1-C16501620B-PDF-IH

