

INDEX OF SHEETS

FOR INDEX OF SHEETS, SEE SHEET NO. 2

PROJECT LOCATED IN VILLAGE OF MIDLOTHIAN, THE CITY OF HARVEY, THE VILLAGE OF POSEN AND THE VILLAGE OF DDXMOOR

TRAFFIC DATA:	ADT (2030)	DESIGN SPEED	POSTED SPEED
147TH STREET	23,000	40 MPH	35 MPH
KEDZIE AVENUE	22,000	40 MPH	35 MPH
DIXIE HIGHWAY	11,000	40 MPH	35 MPH
WESTERN AVENUE	10,000	40 MPH	35 MPH

PROJECT DESCRIPTION

THE PROPOSED 147TH STREET IMPROVEMENT INCLUDES PAVEMENT RECONSTRUCTION AND WIDENING, TRAFFIC SIGNALS, ROADWAY LIGHTING, AND DRAINAGE. WORK WILL INCLUDE PORTIONS OF I-57 ENTRANCE AND EXIT RAMP AS WELL AS PORTIONS OF WESTERN AVENUE AND DIXIE HIGHWAY.

DESIGN DESIGNATION

1780(30) ARTERIAL

STATE OF ILLINOIS
DEPARTMENT OF TRANSPORTATION
DIVISION OF HIGHWAYS

PROPOSED HIGHWAY PLANS

FAP 397

IL-83 (147TH STREET): KEDZIE AVENUE TO WESTERN AVENUE (DIXIE HIGHWAY)

ROADWAY RECONSTRUCTION, LIGHTING AND TRAFFIC SIGNAL INSTALLATION

COOK COUNTY

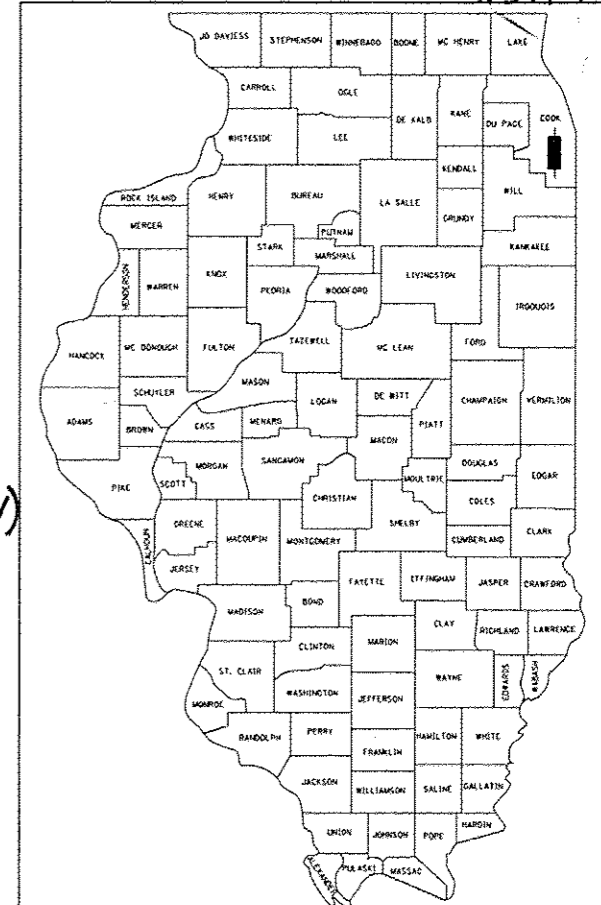
PROJ. TIG - F-0397(004)

C -91-130-11

SECTION (0405-1 & 0506-2) R-1
PROJECT NO.

These plans were prepared and initially advertised to allow bidders to choose between PCC or HMA pavement. Prior to the acceptance of bids the Department made the decision to only accept bids for the PCC option. Any reference in these plans and Special Provisions to the HMA pavement alternate (Alternate B) will not apply.

F.A.I. RTE.	SECTION	COUNTY	TOTAL SHEETS	SHEET NO.
57		COOK	577	1
FED. ROAD DIST. NO.	ILLINOIS	CONTRACT NO.	60M57	
D-91-130-11 • (0405-1 & 0506-2) R-1				



LOCATION OF SECTION INDICATED THUS: - [Red Box] -

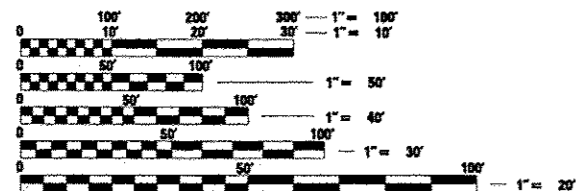
STATE OF ILLINOIS
DEPARTMENT OF TRANSPORTATION
DIVISION OF HIGHWAYS

SUBMITTED MAY 2, 2012

Diana M. O'Keefe
DEPUTY DIRECTOR OF HIGHWAYS, REGION ENGINEER

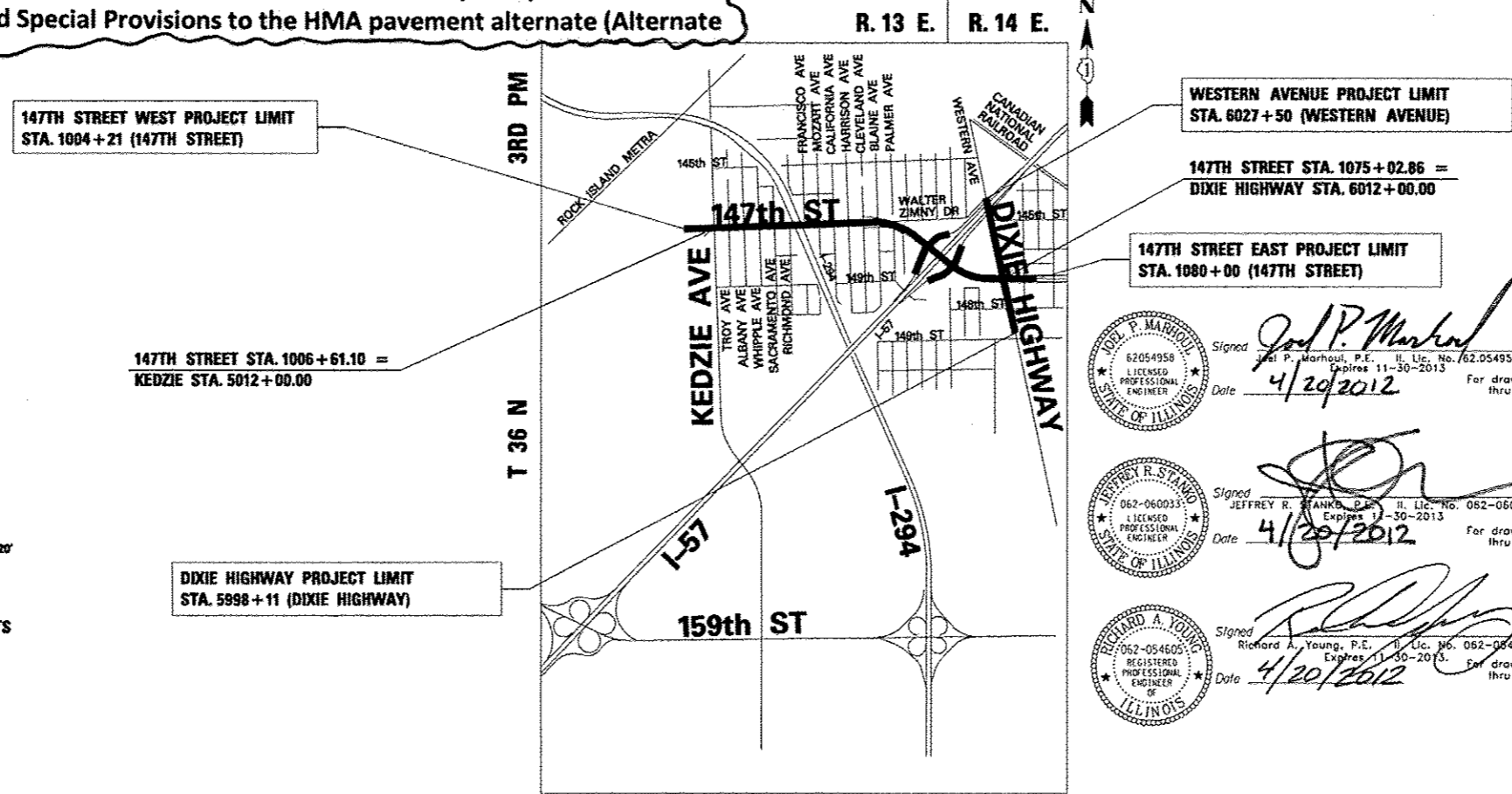
August 17, 2012
John D. Bauamelli P.E./bc
acting ENGINEER OF DESIGN AND ENVIRONMENT

August 17, 2012
William Z. Freiler
acting DIRECTOR OF HIGHWAYS, CHIEF ENGINEER



FULL SIZE PLANS HAVE BEEN PREPARED USING STANDARD ENGINEERING SCALES. REDUCED SIZED PLANS WILL NOT CONFORM TO STANDARD SCALES. IN MAKING MEASUREMENTS ON REDUCED PLANS, THE ABOVE SCALES MAY BE USED.

J.U.L.I.E.
JOINT UTILITY LOCATION INFORMATION FOR EXCAVATION
1-800-892-0123



PROJECT MANAGER: HELEN PAZON (847) 705-4523

CONTRACT NO. 60M57

VILLAGE OF POSEN
LOCATION MAP
GROSS LENGTH OF PROJECT = 12,360 FT. = 2.34 MI.
NET LENGTH OF PROJECT = 12,360 FT. = 2.34 MI.

TYLIN INTERNATIONAL
200 SOUTH WACKER DRIVE, SUITE 1400
CHICAGO, ILLINOIS 60606
TEL: 312-777-2900 FAX: 312-705-0305

PRINTED BY THE AUTHORITY OF THE STATE OF ILLINOIS

Rev. 9-12-12

INDEX OF SHEETS

SHEET NO.	TITLE
1	COVER SHEET
2	INDEX OF SHEETS & INDEX OF STATE STANDARDS
3	GENERAL NOTES & COMMITMENTS
4 - 15	SUMMARY OF QUANTITIES
16 - 20	ALIGNMENT PLANS
21	BENCHMARK DESCRIPTIONS
22 - 25	SURVEY TIES FOR CONTROL POINTS
26 - 28	EXISTING TYPICAL SECTIONS
29 - 30	PROPOSED TYPICAL SECTIONS - PCC, OPTION 1
31 - 32	PROPOSED TYPICAL SECTIONS - HMA, OPTION 2
33	PROPOSED TYPICAL SECTIONS - RAMPS
34	PROPOSED TYPICAL SECTIONS - GENERAL
35	SCHEDULE OF QUANTITIES - DRIVEWAY
36	SCHEDULE OF QUANTITIES
37 - 50	REMOVAL PLANS - 147TH STREET
51 - 55	REMOVAL PLANS - DIXIE HIGHWAY/WESTERN AVENUE
56	REMOVAL PLANS - KEDZIE AVENUE
57 - 71	PROPOSED PLANS - 147TH STREET
72 - 75	PROPOSED PLANS - DIXIE HIGHWAY/WESTERN AVENUE
76 - 80	REMOVAL AND PROPOSED PLANS - I-57 RAMPS
81	PROPOSED PLANS - KEDZIE AVENUE
82 - 90	ROADWAY PROFILES
91	MAINTENANCE OF TRAFFIC - GENERAL AND CONSTRUCTION STAGING NOTES
92	MAINTENANCE OF TRAFFIC - STAGING NOTES CONT. AND SIGNING
93 - 100	MAINTENANCE OF TRAFFIC - TYPICAL SECTIONS
101 - 111	MAINTENANCE OF TRAFFIC - STAGE 1
112 - 118	MAINTENANCE OF TRAFFIC - STAGE 1A
119 - 123	MAINTENANCE OF TRAFFIC - STAGE 1B
124 - 125	MAINTENANCE OF TRAFFIC - STAGE 1C
126 - 134	MAINTENANCE OF TRAFFIC - STAGE 2
135 - 140	MAINTENANCE OF TRAFFIC - STAGE 2A
141 - 145	MAINTENANCE OF TRAFFIC - STAGE 2B
146 - 148	MAINTENANCE OF TRAFFIC - STAGE 2C
149 - 150	MAINTENANCE OF TRAFFIC - STAGE 3A
151 - 152	MAINTENANCE OF TRAFFIC - STAGE 3B
153 - 163	MAINTENANCE OF TRAFFIC - STAGE 3
164 - 171	MAINTENANCE OF TRAFFIC - DETOUR PLAN
172	EROSION CONTROL GENERAL NOTES
173 - 194	EROSION CONTROL PLANS
195 - 197	EROSION CONTROL SCHEDULE
198 - 212	EXISTING DRAINAGE AND REMOVAL PLANS
213 - 218	EXISTING DRAINAGE REMOVAL AND ADJUSTMENT SCHEDULE
219 - 241	PROPOSED DRAINAGE AND UTILITY PLAN
242 - 244	PROPOSED DRAINAGE AND UTILITY PROFILE - 147TH STREET
245	PROPOSED DRAINAGE AND UTILITY PROFILE - DIXIE/WESTERN
246	PROPOSED DRAINAGE AND UTILITY PROFILE - RAMPS
247 - 258	PROPOSED DRAINAGE AND UTILITY SCHEDULE
259	PIPE UNDERDRAIN SCHEDULE
260	BD-12: MANHOLE WITH RESTRICTOR PLATE
261	UNDERDRAIN DETAILS
262	PROPOSED 24-INCH STORM SEWER CONNECTION TO EX STORM SEWER
263	PROPOSED 54-INCH STORM SEWER CONNECTION TO EX STORM SEWER
264 - 270	SUBSURFACE UTILITY LOCATIONS
271	SUBSURFACE UTILITY LOCATIONS - TEST HOLE LOCATIONS
272	SUBSURFACE UTILITY LOCATIONS - TEST HOLE DATA
273 - 282	PROPOSED WATERMAIN IMPROVEMENTS - PLAN AND PROFILE, DETAILS
283 - 305	PLAT OF SURVEY
306 - 315	INTERSECTION LAYOUT DETAILS
316 - 325	PAVEMENT MARKING PLANS

INCLUDED FOR BASE BID PCC, OPTION 1, ONLY
SEE GENERAL NOTES SHEET FOR ALTERNATE BID NOTES.

INDEX OF SHEETS (CONT.)

SHEET NO.	TITLE
326 337H	LANDSCAPING PLANS
338 - 341	EXISTING SIGNING SCHEDULE
342 344C	PROPOSED SIGNING SCHEDULE
345 - 356	SIGNING PLANS
357	TEMPORARY TRAFFIC SIGNAL GENERAL NOTES AND GENERAL CONSTRUCTION NOTES
358 - 359	TRAFFIC SIGNAL SUMMARY OF QUANTITIES
360 - 363	TRAFFIC SIGNAL PLANS - 147TH STREET AT KEDZIE AVENUE
364 - 365	TRAFFIC SIGNAL PLANS - 147TH STREET AT SACRAMENTO AVENUE
366 - 369	TRAFFIC SIGNAL PLANS - 147TH STREET AT HARRISON AVENUE
370 - 373	TRAFFIC SIGNAL PLANS - 147TH STREET AT CLEVELAND AVENUE
374 - 378	TRAFFIC SIGNAL PLANS - 147TH STREET AT SB I-57 RAMPS
379 - 382	TRAFFIC SIGNAL PLANS - 147TH STREET AT NB I-57 RAMPS
383 - 390	TRAFFIC SIGNAL PLANS - 147TH STREET AT DIXIE HIGHWAY/WESTERN AVENUE
391 - 407	TRAFFIC SIGNAL INTERCONNECT PLANS
408 - 413	DISTRICT J TRAFFIC SIGNAL: DESIGN DETAILS
414	SURVEILLANCE PLAN AND DETAILS
415	RECTANGULAR INDUCTION LOOP - TYPICAL
416	LOOP STATUS REPORT
417 - 449	ELECTRICAL AND LIGHTING PLANS
450 - 451	HIGH MAST LIGHT TOWER SERVICE PAD AND RETAINING WALL DETAILS
452	BD-01: DRIVEWAY DETAILS - DISTANCE BETWEEN R.O.W. AND CURB OR EDGE GREATER THAN OR EQUAL TO 15'
453	BD-02: DRIVEWAY DETAILS - DISTANCE BETWEEN R.O.W. AND CURB OR EDGE LESS THAN 15' (4.5 m)
454	BD-07: STORM SEWER CONNECTION TO EXISTING SEWER
455	BD-08: FRAMES AND LIDS ADJUSTMENT WITH MILLING; AND FRAMES AND LIDS ADJUSTMENT WITHOUT MILLING
456	BD-22: PAVEMENT PATCHING FOR HMA SURFACED PAVEMENT
457	BD-32: BUTT JOINT AND HMA TAPER DETAILS
458	BD-33: HMA TAPER AT EDGE OF PCC PAVEMENT
459	BD-34: DETAILS FOR DEPRESSED CURB & GUTTER AND SHOULDER TREATMENT AT TBT TY 1 SPL
460	BD-48: PCC PAVEMENT ROUNDOUTS AT CURB AND GUTTER
461	BD-49: DETAIL FOR CENTERLINE SAW CUT 16' (4.9 m) AND VARIABLE JOINTED PCC PAVEMENT FOR RAMPS
462	BD-51: BENCHING DETAIL FOR EMBANKMENT WIDENING
463	BD-52: DETAIL OF PAVEMENT SEPARATION JOINT FOR JOINTED PCC PAVEMENTS AT INTERSECTIONS
464	TC-10: TRAFFIC CONTROL AND PROTECTION FOR SIDE ROADS, INTERSECTIONS AND DRIVEWAYS
465	TC-11: RAISED REFLECTIVE PAVEMENT MARKERS (SNOW PLOW RESISTANT)
466 - 467	TC-12: MULTI-LANE FREEWAY PAVEMENT MARKING DETAILS
468	TC-13: DISTRICT ONE TYPICAL PAVEMENT MARKINGS
469	TC-14: TRAFFIC CONTROL AND PROTECTION AT TURN BAYS (TO REMAIN OPEN TO TRAFFIC)
470	TC-16: PAVEMENT MARKING LETTERS AND SYMBOLS FOR TRAFFIC STAGING
471	TC-17: TRAFFIC CONTROL FOR SHOULDER CLOSURES AND PARTIAL RAMP CLOSURES
472	TC-18: SIGNING FOR FLAGGING OPERATIONS AT WORK ZONE OPENINGS
473	TC-21: DETOUR SIGNING FOR CLOSING STATE HIGHWAYS
474	TC-22: ARTERIAL ROAD INFORMATION SIGN
475	TC-26: DRIVEWAY ENTRANCE SIGNING
476	TC-27: MILE POST MARKERS - CORE SIGNS - MAJOR GUIDE SIGN LAYOUT-ARROWS
477 - 478	CCHD STANDARD; PERMANENT PAVEMENT MARKINGS
479	CCHD STANDARD; TRAFFIC SIGN MOUNTING DETAIL
480	CCHD STANDARD; TYPICAL TEMPORARY PAVEMENT MARKING
481 - 482	CCHD STANDARD; MEDIAN STANDARD DETAIL
483 - 499	CROSS SECTIONS - DIXIE/WESTERN
500 - 555	CROSS SECTIONS - 147TH STREET
556 - 561	CROSS SECTIONS - KEDZIE
562 - 566	CROSS SECTIONS - RAMP E
567 - 568	CROSS SECTIONS - RAMP F
569 - 573	CROSS SECTIONS - RAMP J
574 - 577	CROSS SECTIONS - RAMP K
577A 577E	SOIL BORING SHEETS

INDEX OF IDOT STANDARDS

STANDARD NO.	TITLE
060001	STANDARD SYMBOLS, ABBREVIATIONS, AND PATTERNS
280001	TEMPORARY EROSION CONTROL SYSTEM
420001	PAVEMENT JOINTS
420101	24' (7.2m) JOINTED PCC PAVEMENT
420106	36' (10.8m) JOINTED PCC PAVEMENT
420111	PCC PAVEMENT ROUNDOUTS
424001	PERPENDICULAR CURB RAMPS FOR SIDEWALKS
424006	DIAGONAL CURB RAMPS FOR SIDEWALKS
424016	MID-BLOCK CURB RAMPS FOR SIDEWALKS
424026	ENTRANCE/ALLEY PEDESTRIAN CROSSINGS
482001	HMA SHOULDER ADJACENT TO FLEXIBLE PAVEMENT
483001	PCC SHOULDER
542301	PRECAST REINFORCED CONCRETE FLARED END SECTION
542311	GRATING FOR CONCRETE FLARED END SECTION (FOR 24" THRU 54" PIPE)
601001	SUB-SURFACE DRAINS
601101	CONCRETE HEADWALL FOR PIPE DRAIN
602001	CATCH BASIN, TYPE A
602301	INLET, TYPE A
602401	MANHOLE, TYPE A
602406	MANHOLE, TYPE A, 6' DIAMETER
602416	MANHOLE, TYPE A, 8' DIAMETER
602601	PRECAST REINFORCED CONCRETE FLAT SLAB TOP
602701	MANHOLE STEPS
604001	FRAME AND LIDS, TYPE 1
604036	GRATE, TYPE 8
604051	FRAME AND GRATE, TYPE 11
604091	FRAME AND GRATE, TYPE 24
606001	CONCRETE CURB AND COMBINATION CONCRETE CURB AND GUTTER
606301	PCC ISLANDS AND MEDIANS
606306	CORRUGATED PCC MEDIANS
630001	STEEL PLATE BEAM GUARDRAIL
630201	PCC/HMA STABILIZATION AT STEEL PLATE BEAM GUARDRAIL
631011	TRAFFIC BARRIER TERMINAL TYPE 2
631031	TRAFFIC BARRIER TERMINAL TYPE 6
631033	TRAFFIC BARRIER TERMINAL TYPE 6B
635001	DELINEATORS
635006	REFLECTOR AND TERMINAL MARKER PLACEMENT
635011	REFLECTOR MARKER AND MOUNTING DETAILS
642001	SHOULDER RUMBLE STRIPS, 16 IN
664001	CHAIN LINK FENCE
701502	URBAN LANE CLOSURE, 2L, 2W, WITH BIDIRECTIONAL LEFT TURN LANE
701601	URBAN LANE CLOSURE, MULTILANE, 1W OR 2W WITH NONTRAVERSABLE MEDIAN
701602	URBAN LANE CLOSURE, MULTILANE, 2W WITH BIDIRECTIONAL LEFT TURN LANE
701606	URBAN LANE CLOSURE, MULTILANE, 2W WITH MOUNTABLE MEDIAN
701701	URBAN LANE CLOSURE, MULTILANE INTERSECTION
701801	SIDEWALK, CORNER OR CROSSWALK CLOSURE
701901	TRAFFIC CONTROL DEVICES
704001	TEMPORARY CONCRETE BARRIER
720001	SIGN PANEL MOUNTING DETAILS
720006	SIGN PANEL ERECTION DETAILS
720011	METAL POSTS FOR SIGNS, MARKERS, & DELINEATORS
729001	APPLICATIONS OF TYPES A & B METAL POSTS (FOR SIGNS & MARKERS)
781001	TYPICAL APPLICATIONS RAISED REFLECTIVE PAVEMENT MARKERS
813001	JUNCTION BOXES
814001	CONCRETE HANDHOLES
886001	DETECTOR LOOP INSTALLATIONS
886006	TYPICAL LAYOUT FOR DETECTION LOOPS

TYLIN INTERNATIONAL USER NAME: _____ PLOT SCALE: _____ PLOT DATE: _____	DESIGNED - EMK	REVISED - RES 2/22/2012	STATE OF ILLINOIS DEPARTMENT OF TRANSPORTATION		147TH STREET PROJECT INDEX OF SHEETS AND INDEX OF STATE STANDARDS		F.A.I. RTE. XX	SECTION 10405-1 & 0506-21 R-1	COUNTY COOK	TOTAL SHEETS 577	SHEET NO. 2
	DRAWN - EMK	REVISED -					CONTRACT NO. 60M57				
	CHECKED - SES	REVISED Δ ADDENDUM 1 9/12/2012					FED. ROAD DIST. NO. ILLINOIS/FED. AID PROJECT				
	DATE - 5/23/2012	REVISED - 8/1/2012					SCALE: NTS	SHEET NO. 1 OF 1 SHEETS	STA. TO STA.		

ALTERNATE BID NOTES:

1. THE PLANS CONTAIN PROVISIONS FOR A BASE BID OF PCC, OPTION 1, AND AN ALTERNATE BID OF HOT-MIX ASPHALT, OPTION 2. I-57 RAMP E, F, J, AND K AT 147TH STREET SHALL BE PCC REGARDLESS OF THE BID OPTION 1 OR OPTION 2 (SEE PLANS). THE CONTRACTOR SHALL NOTE THE FOLLOWING:
2. IF THE BASE BID IS AWARDED (OPTION 1 - PCC), THE FOLLOWING SHEETS AND STANDARDS WILL BE DELETED FROM THE PLAN SET: XX - XX (SCHEDULE OF QUANTITIES - HMA, OPTION 2), XX - XX (TYPICAL SECTIONS - HMA, OPTION 2).
3. IF THE ALTERNATE BID IS AWARDED (OPTION 2 - HMA), THE FOLLOWING SHEETS AND STANDARDS WILL BE DELETED FROM THE PLAN SET: XX - XX (SCHEDULE OF QUANTITIES - PCC, OPTION 1), XX - XX (TYPICAL SECTIONS - PCC, OPTION 1), XX (BD-52).

USED



GENERAL NOTES:

1. ALL CONSTRUCTION SHALL BE DONE IN ACCORDANCE WITH THE "STANDARD SPECIFICATIONS FOR ROAD AND BRIDGE CONSTRUCTION", ADOPTED JANUARY 1, 2012; THE "SUPPLEMENTAL SPECIFICATIONS AND RECURRING SPECIAL PROVISIONS", ADOPTED JANUARY 1, 2012; THE LATEST EDITION OF THE "ILLINOIS MANUAL ON UNIFORM TRAFFIC CONTROL DEVICES FOR STREETS AND HIGHWAYS" (MUTCD); THE "STANDARD SPECIFICATIONS FOR TRAFFIC CONTROL ITEMS" (SSTC); THE DETAILS IN THE PLANS AND THE "SPECIAL PROVISIONS" INCLUDED IN THE CONTRACT DOCUMENTS.
2. THE CONTRACTOR SHALL MAINTAIN ALL ROADWAYS OPEN TO TRAFFIC AS SHOWN ON THE MAINTENANCE OF TRAFFIC PLANS.
3. BEFORE STARTING ANY EXCAVATION, THE CONTRACTOR SHALL CALL J.U.L.I.E. AT (800) 892-0123 FOR FIELD LOCATIONS OF BURIED ELECTRIC, TELEPHONE, CABLE, AND GAS FACILITIES (48 HOURS NOTIFICATION IS REQUIRED). CONTACT THE APPLICABLE MUNICIPALITY FOR SEWER AND WATER LOCATIONS.
4. FOR STABILIZATION, ALL TYPE III BARRICADES SHALL REQUIRE A MINIMUM OF FOUR SAND BAGS PER BARRICADE.
5. NIGHT OPERATIONS: IF CONTRACTOR ELECTS TO UTILIZE ARTIFICIAL LIGHTING IN NIGHT OPERATIONS, HE SHALL EXERCISE THE UTMOST PRECAUTION IN PREVENTING ADVERSE VISIBILITY TO THE MOTORING PUBLIC AS WELL AS THE ADJOINING RESIDENTIAL AREAS.
6. ALL STORM SEWER CONNECTIONS WITH PIPES 27 INCHES IN DIAMETER AND SMALLER SHALL BE MADE WITH PRECAST "TEE" OR "WYE" PIPES. FOR PROPOSED STORM SEWER PIPES LARGER THAN 27 INCHES IN DIAMETER, OPENINGS OF THE SPECIFIED DIAMETER SHALL BE MADE IN THE PIPE AT THE TIME IT IS MANUFACTURED. PRECAST "TEE" AND "WYE" PIPE CONNECTIONS (LABOR AND MATERIALS) FOR PROPOSED STORM SEWER WILL NOT BE PAID FOR SEPARATELY BUT SHALL BE INCLUDED IN THE COST OF THE STORM SEWERS, OF THE TYPE AND SIZE SPECIFIED.
7. WHEN MILLED PAVEMENT IS OPEN TO TRAFFIC, THE MAXIMUM GRADE DIFFERENTIAL BETWEEN PASSES OF THE MILLING MACHINE SHALL NOT EXCEED 1/2 INCHES WHERE THE SPEED LIMIT IS 45 MPH OR LESS AND 1 INCH WHERE THE SPEED LIMIT IS GREATER THAN 45 MPH. WITH WRITTEN APPROVAL FROM THE ENGINEER, A MAXIMUM GRADE DIFFERENTIAL OF 3 INCHES MAY BE ALLOWED IF THE EDGE OF THE MILLING IS SLOPED A MINIMUM 1:3 (V:H).
8. BUTT JOINTS MUST BE INSTALLED AT THE ENDS OF ALL RESURFACING (WHERE RESURFACING MEETS EXISTING PAVEMENT) IN ACCORDANCE WITH DISTRICT 1 DETAIL BD-32 "BUTT JOINT AND HMA TAPER DETAILS" INCLUDED IN THE PLANS, UNLESS OTHERWISE SPECIFIED.
9. FOR WORK OUTSIDE THE LIMITS OF BRIDGE APPROACH PAVEMENT, ALL REFERENCES IN THE HIGHWAY STANDARD AND STANDARD SPECIFICATIONS FOR REINFORCEMENT, DOWEL BARS AND TIE BARS IN PAVEMENT, SHOULDERS, CURB, CUTTER, COMBINATION CURB AND CUTTER AND MEDIAN, AND CHAIR SUPPORTS FOR CRC PAVEMENT, SHALL BE EPOXY COATED, UNLESS NOTED ON THE PLAN.
10. ALL HORIZONTAL COORDINATES AND VERTICAL ELEVATIONS REFER TO NAD83 (CORS) ILLINOIS EAST ZONE HORIZONTAL DATUM AND NAVD88 VERTICAL DATUM, RESPECTIVELY.
11. NOT USED
12. STORM SEWER, (WATERMAIN REQUIREMENTS) IS TO BE USED AT LOCATIONS WHERE THE WATER MAIN CROSSES BELOW THE SEWER, REGARDLESS OF VERTICAL SEPARATION OR WHERE THE BOTTOM OF THE WATER MAIN IS LESS THAN 18 INCHES ABOVE THE TOP OF THE SEWER.
13. A "BOXED" NOTE INDICATES AN ITEM OF WORK THAT IS NOT PAID FOR SEPARATELY, BUT IS PAID FOR AS PART OF ANOTHER ITEM LISTED IN THE SUMMARY OF QUANTITIES.
14. THE REMOVAL OF FIELD CULVERTS SHALL BE INCLUDED IN THE COST OF EARTH EXCAVATION.
15. TEN (10) FOOT TRANSITIONS SHALL BE USED TO MATCH PROPOSED ITEMS OF WORK TO EXISTING ITEMS IN THE FIELD, UNLESS OTHERWISE SHOWN. THE TRANSITIONS SHALL BE PAID FOR AT THE CONTRACT UNIT PRICE FOR THE PROPOSED ITEM OF WORK SPECIFIED.
16. NOT USED
17. DIMENSIONS: IT SHALL BE THE CONTRACTOR'S RESPONSIBILITY TO VERIFY ALL DIMENSIONS AND CONDITIONS EXISTING IN THE FIELD PRIOR TO ORDERING MATERIALS AND BEGINNING CONSTRUCTION.

18. IN LOCATIONS WHERE EXISTING DRAINAGE STRUCTURES, EXISTING STORM SEWERS AND EXISTING FLARED END SECTIONS ARE IN CONFLICT WITH THE INSTALLATION OF THE PROPOSED DRAINAGE STRUCTURES AND STORM SEWERS, REMOVAL OF THE EXISTING ITEMS SHALL NOT BE PAID FOR SEPARATELY BUT SHALL BE INCLUDED IN THE COST OF DRAINAGE STRUCTURES OR STORM SEWERS, OF THE TYPE AND SIZE SPECIFIED.

19. THE LOCATIONS OF EXISTING DRAINAGE STRUCTURES, STORM AND SANITARY SEWERS, WATER SERVICE LINES AND OTHER UTILITY LINES ARE APPROXIMATE, AND IDOT DOES NOT GUARANTEE THEIR ACCURACY. THEIR EXACT HORIZONTAL AND VERTICAL LOCATIONS ARE TO BE DETERMINED IN THE FIELD BY THE CONTRACTOR AT HIS OWN EXPENSE. THE CONTRACTOR SHALL CONTACT J.U.L.I.E. PRIOR TO CONSTRUCTION AND COORDINATE HIS ACTIVITIES WITH THE ENGINEER.

20. THE CONTRACTOR SHALL BE RESPONSIBLE FOR THE PROTECTION OF ALL UNDERGROUND OR SURFACE UTILITIES EVEN THOUGH THEY MAY NOT BE SHOWN ON THE PLANS. ANY UTILITY THAT IS DAMAGED DURING CONSTRUCTION SHALL BE REPAIRED OR REPLACED TO THE SATISFACTION OF THE ENGINEER. THIS WORK SHALL BE AT THE CONTRACTOR'S EXPENSE.

21. ANY EXISTING OR PROPOSED STORM SEWER DAMAGED BY THE CONTRACTOR DURING CONSTRUCTION SHALL BE REPLACED TO THE SATISFACTION OF THE ENGINEER AT THE CONTRACTOR'S EXPENSE.

22. FOR WATER MAIN SHUT OFFS, THE CONTRACTOR SHALL GIVE THE APPLICABLE MUNICIPALITY A MINIMUM OF 48 HOURS NOTICE. THE OWNING MUNICIPALITY SHALL PROVIDE NOTIFICATION FORMS AND DETERMINE THE LIMIT OF THE AFFECTED AREAS. THE CONTRACTOR SHALL BE RESPONSIBLE FOR DISTRIBUTION OF THE NOTIFICATION FORMS TO ALL AFFECTED RESIDENTS.

23. THE CONTRACTOR SHALL NOT OPEN OR SHUT ANY WATER VALVES OR FIRE HYDRANTS WITHOUT PRIOR WRITTEN AUTHORIZATION FROM THE OWNING MUNICIPALITY. UNAUTHORIZED USE IS SUBJECT TO ARREST AND PROSECUTION.

24. ANY ABANDONED UTILITY OR SEWER ENCOUNTERED DURING CONSTRUCTION OR ANY EXISTING UTILITY OR SEWER ABANDONED AS PART OF THE CONSTRUCTION THAT IS NOT BEING FILLED WITH C.L.S.M., AS PER PLAN, SHALL BE PLUGGED AS DIRECTED BY THE ENGINEER AND ABANDONED IN PLACE. THIS WORK SHALL BE INCLUDED IN THE COST OF THE CONTRACT.

25. DURING CONSTRUCTION OPERATIONS, IF ANY LOOSE MATERIAL IS DEPOSITED IN THE FLOW LINE OF DRAINAGE STRUCTURES SUCH THAT THE NATURAL FLOW OF WATER IS OBSTRUCTED, THE MATERIAL SHALL BE REMOVED AT THE CLOSE OF EACH WORKING DAY, AT THE CONCLUSION OF CONSTRUCTION OPERATIONS, ALL UTILITY STRUCTURES SHALL BE FREE FROM DUST AND DEBRIS. THE WORK SPECIFIED ABOVE WILL NOT BE PAID SEPARATELY BUT SHALL BE INCLUDED IN THE COST OF THE CONTRACT.

26. THE CONTRACTOR SHALL MAINTAIN THE SURFACE DRAINAGE OF ALL ROADWAYS DURING CONSTRUCTION OF THIS PROJECT. WHEN EXISTING DRAINAGE FACILITIES ARE DISTURBED, THE CONTRACTOR SHALL PROVIDE AND MAINTAIN TEMPORARY OUTLETS AND CONNECTIONS FOR ALL PRIVATE OR PUBLIC DRAINS, SEWERS, AND CATCH BASINS. HE/SHE SHALL PROVIDE FACILITIES TO TAKE IN ALL STORM WATER WHICH WILL BE RECEIVED BY THESE DRAINS AND SEWERS AND DISCHARGE THE SAME. HE/SHE SHALL PROVIDE AND MAINTAIN A PUMPING PLANT, IF NECESSARY, AND A TEMPORARY OUTLET AND BE PREPARED AT ALL TIMES TO DISPOSE OF THE WATER RECEIVED FROM THESE TEMPORARY CONNECTIONS UNTIL SUCH TIME AS THE PERMANENT CONNECTIONS WITH SEWERS ARE BUILT AND IN SERVICE. THIS WORK SHALL BE INCLUDED IN THE COST OF THE CONTRACT.

27. FENCE: EXISTING FENCE THAT HAS TO BE DISCONNECTED AND/OR REMOVED FOR THE CONTRACTOR'S OPERATIONS SHALL BE RECONNECTED AND/OR REPLACED BY THE CONTRACTOR IN KIND AT NO ADDITIONAL COST TO THE DEPARTMENT. TEMPORARY FENCE SHOULD BE INSTALLED IF EXISTING FENCE IS REMOVED BY THE CONTRACTOR IN ACCORDANCE WITH THE STANDARD SPECIFICATIONS. ANY RIGHT-OF-WAY MARKERS DISTURBED BY THE CONTRACTOR'S OPERATION SHALL BE REESTABLISHED BY A REGISTERED LAND SURVEYOR AT THE CONTRACTOR'S EXPENSE.

28. IT SHALL BE THE CONTRACTOR'S RESPONSIBILITY TO NOTIFY IDOT AND/OR APPLICABLE MUNICIPALITY AT LEAST 10 DAYS IN ADVANCE OF ANY CONSTRUCTION NEAR DEPARTMENT OWNED ELECTRICAL, COMMUNICATIONS, OR TRAFFIC CONTROL CABLES. IDOT AND/OR APPLICABLE MUNICIPALITY ELECTRICIANS WILL LOCATE ANY POSSIBLE INTERFERING CABLES. ANY BURIED CABLE AT OR NEAR A PROPOSED CONSTRUCTION LOCATION SHALL FIRST BE EXPOSED BY THE CONTRACTOR BY HAND DIGGING, ONCE EXPOSED, AND IF THE ENGINEER DETERMINES THERE IS A CONFLICT, THE CONTRACTOR SHALL RELOCATE THE CABLES. IF THE CONTRACTOR CUTS OR DAMAGES ANY CABLES, EITHER THROUGH CARELESSNESS OR FAILURE TO FOLLOW THE ABOVE PROCEDURE, HE/SHE SHALL THEN BE HELD RESPONSIBLE FOR THE REPAIRING OF ALL DAMAGES AT HIS EXPENSE, TO THE SATISFACTION OF THE OWNING AGENCY.

29. THE CONTRACTOR SHALL TAKE ALL NECESSARY SAFETY PRECAUTIONS TO PROTECT AND PROVIDE ACCESS TO ABUTTING PROPERTY, UTILITIES, PEDESTRIANS, AND VEHICULAR TRAFFIC.

30. NO PAYMENT WILL BE MADE FOR RESTORATION BEYOND THE LIMITS SHOWN ON THE PLANS.

31. THE ENGINEER SHALL CONTACT THE IDOT TRAFFIC CONTROL SUPERVISOR AT 847-705-4470 AND THE MUNICIPALITIES A MINIMUM OF 72 HOURS PRIOR TO THE PLACEMENT OF ANY TEMPORARY TRAFFIC CONTROL DEVICES.

32. THE CONTRACTOR SHALL USE CARE IN GRADING OR EXCAVATING NEAR ANY AND ALL EXISTING ITEMS THAT WILL NOT BE REMOVED. ANY DAMAGE DONE TO EXISTING ITEMS BY THE CONTRACTOR SHALL BE REPAIRED OR REPLACED AT THE CONTRACTOR'S OWN EXPENSE.

33. TEMPORARY CONCRETE BARRIER: THE BARRIER UNIT AT EACH END OF THE INSTALLATIONS SHALL BE SECURED TO THE PAVEMENT OR SHOULDER USING THREE (3) ANCHORING PINS. THE COST OF SECURING THE BARRIER IS TO BE INCLUDED IN THE COST OF THE CONCRETE BARRIER.

34. ANY EXISTING UTILITY ADJUSTMENT AGREEMENTS AND SCHEDULES FOR THE ADJUSTMENT OF UTILITIES, WHICH MAY AFFECT THE WORK, WILL BE MADE AVAILABLE TO THE BIDDERS UPON REQUEST.

35. THE BITUMINOUS MATERIAL PRIME COAT QUANTITIES HAVE BEEN DETERMINED USING A RATE OF 0.10 GAL/50 YD.

36. THE CONTRACTOR SHALL USE IDOT GRADATION FA-6 TRENCH BACKFILL FOR FILLING TRENCHES THAT HAVE STORM SEWERS TO BE REMOVED.

37. THE CONTRACTOR SHALL BE RESPONSIBLE FOR PROTECTING AND PRESERVING THE PROJECT'S SURVEY CONTROL POINTS AND BENCHMARKS. RELOCATING AND REPLACING CONTROL POINTS AND BENCHMARKS SHALL BE THE CONTRACTOR'S RESPONSIBILITY AT HIS/HER OWN EXPENSE.

38. ALL TRENCHES AND OPENINGS MADE IN THE ROADWAY SHALL BE BACKFILLED AND ADEQUATELY COMPACTED IN ACCORDANCE WITH METHOD I SPECIFIED IN ARTICLE 550.07 OF THE STATE STANDARD SPECIFICATIONS. BACKFILLING METHODS TWO AND THREE AUTHORIZED UNDER THE PROVISIONS OF ARTICLE 550.07 OF THE STANDARD SPECIFICATIONS WILL NOT BE ALLOWED.

39. EXISTING DRAINAGE STRUCTURES, EXISTING STORM SEWERS AND EXISTING FLARED END SECTIONS TO REMAIN SHALL BE RECONNECTED WITH THE DRAINAGE SYSTEM. THIS WORK SHALL BE INCLUDED IN THE COST OF DRAINAGE STRUCTURES OR STORM SEWERS, OF THE TYPE AND SIZE SPECIFIED.

40. THE I-57 RAMP SHOULDERS SHALL BE INSPECTED BEFORE THEY WILL BE ALLOWED TO BE USED AS TRAFFIC LANES. IF NEEDED, THEY SHALL BE REPAIRED AS DIRECTED BY THE ENGINEER. AFTER THE SHOULDERS ARE NO LONGER USED AS TRAFFIC LANES, THEY SHALL BE INSPECTED BY THE ENGINEER AND REPAIRED BY THE CONTRACTOR AS DIRECTED BY THE ENGINEER.

41. EMERGENCY PAVEMENT AND SHOULDER MAINTENANCE REPAIRS: AFTER THE INITIAL REPAIRS HAVE BEEN APPROVED BY THE ENGINEER, THE CONTRACTOR SHALL MAKE ALL REQUIRED REPAIRS, INCLUDING POTHOLE PATCHING, TEMPORARY TRAFFIC CONTROL AND OTHERS AS DIRECTED BY THE ENGINEER. MAINTENANCE REPAIRS SHALL BE PAID FOR IN ACCORDANCE WITH SECTION 109.4 OF THE STANDARD SPECIFICATIONS FOR EXTRA WORK.

42. ALL VEHICLES INCLUDING PASSENGER CARS, WHETHER OWNED BY THE CONTRACTOR OR ANYONE REPRESENTING HIM/HER, SHALL BE EQUIPPED WITH A YELLOW FLASHING LIGHT MOUNTED EITHER ON TOP OF IN THE REAR WINDOW OF THE VEHICLE AND VISIBLE FOR AT LEAST 500 FEET TO THE REAR OF THE VEHICLE, AND A SIGN MUST BE DISPLAYED ON EACH SIDE OF THE VEHICLE AND WITH LETTERS AT LEAST 3 INCHES IN HEIGHT AND WITH A SUITABLE STROKE, SHOWING THE COMPANY NAME AND ADDRESS. MAGNETIC OR TEMPORARY SIGNS ARE ACCEPTABLE.

43. IF THE PCC ALTERNATE IS CHOSEN, HIGH-EARLY-STRENGTH PCC SHALL BE PLACED AT THE INTERSECTIONS OF 147TH STREET AND DIXIE/WESTERN AND 147TH STREET AND KEDZIE IN ORDER TO ALLOW ALL TRUCK TURN MOVEMENTS THROUGH THE INTERSECTIONS WITHIN TWO WEEKS OF THE RESTRICTIONS BEING PUT IN PLACE.

44. TWO WEEKS PRIOR TO PLACEMENT OF PERMANENT PAVEMENT MARKINGS THE ENGINEER SHALL CONTACT PATRICE HARRIS, AREA TRAFFIC FIELD TECHNICIAN AT (708) 597-9800.

45. FOR WORK OUTSIDE THE LIMITS OF BRIDGE APPROACH PAVEMENT, ALL REFERENCES IN THE HIGHWAY STANDARDS AND STANDARD SPECIFICATIONS FOR REINFORCEMENT, DOWEL BARS AND TIE BARS IN PAVEMENT, SHOULDERS, CURB, CUTTER, COMBINATION CURB AND GUTTER AND MEDIAN, AND CHAIR SUPPORTS FOR CRC PAVEMENT, SHALL BE EPOXY COATED, UNLESS NOTED ON THE PLAN.

46. ADDITIONAL QUANTITIES HAVE BEEN ESTIMATED FOR ADA COMPLIANCE. AN ADDITIONAL 200 SF OF 5" PCC SIDEWALK (PROPOSED AND REMOVAL) AND 100' OF CONCRETE CURB, TYPE B, HAVE BEEN ADDED.

GENERAL NOTES - LANDSCAPE

1. AREAS TO BE SEEDED BETWEEN NOVEMBER 1 AND APRIL 1 SHALL REQUIRE DORMANT SEEDING, WHICH SHALL BE INCLUDED IN THE COST OF SEEDING, CLASS 2A OR SEEDING, CLASS 3.

GENERAL NOTES - SEDIMENT AND EROSION CONTROL

1. EROSION CONTROL ITEMS ARE CONSIDERED TO BE HIGH PRIORITY ITEMS ON THIS CONTRACT. THE ENGINEER WILL IMPLEMENT ALL PROVISIONS OF THE SPECIFICATION NECESSARY TO ASSURE THAT EROSION CONTROL ITEMS ARE CONSTRUCTED AND MAINTAINED IN A TIMELY WAY. ALL EROSION CONTROL MEASURES SHALL BE INSTALLED PRIOR TO BEGINNING ANY CONSTRUCTION ACTIVITIES, WHICH WILL POTENTIALLY CREATE ERODIBLE CONDITIONS.
2. THE EROSION CONTROL MEASURES SHOWN ARE ONLY A GRAPHICAL REPRESENTATION OF SUGGESTED MEASURES. DEVIATIONS FROM THIS PLAN ARE TO BE EXPECTED PENDING A JOB SITE INSPECTION BETWEEN THE CONTRACTOR AND THE ENGINEER.
3. THE CONTRACTOR WILL BE REQUIRED TO IMPLEMENT AND MAINTAIN SEDIMENT CONTROL MEASURED PRIOR TO STRIPPING EXISTING VEGETATION.

DEFINITIONS

IDOT: ILLINOIS DEPARTMENT OF TRANSPORTATION
 CCHD: COOK COUNTY HIGHWAY DEPARTMENT

MUNICIPALITIES: CONTACT INFORMATION
 VILLAGE OF POSEN (708)385-0139 STAN BARWOCK, VILLAGE ENGINEER
 VILLAGE OF MIDLOTHIAN (708)389-9658 PUBLIC WORKS SUPERINTENDANT
 VILLAGE OF DIXMOOR (708)389-6121 DIRECTOR OF PUBLIC WORKS
 CITY OF HARVEY (708)210-5340 DIRECTOR OF PUBLIC WORKS

TYLIN INTERNATIONAL	USER NAME :	DESIGNED - EMK	REVISED - BES 2/1/2012	STATE OF ILLINOIS DEPARTMENT OF TRANSPORTATION	147TH STREET PROJECT			F.A.T. SHEETS	TOTAL SHEETS	SHEET NO.
	PLOT SCALE :	DRAWN - EMK	REVISED		XX	SECTION	COUNTY	577	3	
	PLOT DATE :	CHECKED - JPM	REVISED Δ ADDENDUM 1 9/12/2012		GENERAL NOTES		COOK	CONTRACT NO. 60M57		
		DATE - 5/23/2012	REVISED - 8/1/2012		SCALE: NTS	SHEET NO. 1 OF 1 SHEETS	STA.	TO STA.	FED. ROAD DIST. NO.	ILLINOIS FED. AID PROJECT

CODE NUMBER	ITEM DESCRIPTION	URBAN UNIT	TOTAL PART 1	ROADWAY RECONSTRUCTION 0004				LIGHTING 0021					SIGNING 0021		UTILITIES 0043		TRAFFIC SIGNALS 0021				INTER-CONNECT 0021
				80% FEDERAL 20% STATE	100% DIXMOOR	100% HARVEY	100% COOK COUNTY	80% FEDERAL 20% STATE	100% MIDLOTHIAN	100% DIXMOOR	100% HARVEY	100% POSEN	80% FEDERAL 20% STATE	100% COOK COUNTY	100% POSEN	100% HARVEY	80% FEDERAL 20% STATE	100% MIDLOTHIAN	100% POSEN	100% HARVEY	80% FEDERAL 20% STATE
20100110	TREE REMOVAL (6 TO 15 UNITS DIAMETER)	UNIT	198	198																	
20100210	TREE REMOVAL (OVER 15 UNITS DIAMETER)	UNIT	246	246																	
20500100	EARTH EXCAVATION	CU YD	SEE TABLE I ALTERNATE QUANTITIES																		
20201200	REMOVAL AND DISPOSAL OF UNSUITABLE MATERIAL	CU YD	4685	4655			30														
20800150	TRENCH BACKFILL	CU YD	15818	14478												1340					
21001000	GEOTECHNICAL FABRIC FOR GROUND STABILIZATION	SO YD	110890	106123			4767														
* 21101615	TOPSOIL FURNISH AND PLACE, 4"	SO YD	51127	49574			1553														
* 21101695	TOPSOIL FURNISH AND PLACE, 30"	SO YD	6411	6411																	
* 21101815	COMPOST FURNISH AND PLACE, 4"	SO YD	6411	6411																	
21301048	EXPLORATION TRENCH 48" DEPTH	FOOT	320	320																	
* 25000210	SEEDING, CLASS 2A	ACRE	8	8																	
* 25000400	NITROGEN FERTILIZER NUTRIENT	POUND	893	873			20														
* 25000500	PHOSPHORUS FERTILIZER NUTRIENT	POUND	893	873			20														
* 25000600	POTASSIUM FERTILIZER NUTRIENT	POUND	893	873			20														
25100115	MULCH, METHOD 2	ACRE	0.25	0.25																	
25100135	MULCH, METHOD 4	ACRE	11.50	11.25			0.25														
* 25100630	EROSION CONTROL BLANKET	SO YD	37994	37994																	
* 25100635	HEAVY DUTY EROSION CONTROL BLANKET	SO YD	726	726																	
* 25200110	SODDING, SALT TOLERANT	SO YD	13867	12314			1553														
* 25200200	SUPPLEMENTAL WATERING	UNIT	1534	1487			47														
28000250	TEMPORARY EROSION CONTROL SEEDING	POUND	5845	5680			165														
28000305	TEMPORARY DITCH CHECKS	FOOT	450	450																	
28000500	INLET AND PIPE PROTECTION	EACH	22	21			1														
28000510	INLET FILTERS	EACH	300	282			18														
30300112	AGGREGATE SUBGRADE IMPROVEMENT 12"	SO YD	110890	106123			4767														
31102000	SUBBASE GRANULAR MATERIAL, TYPE C	CU YD	207	207																	
31200502	STABILIZED SUB-BASE - HOT-MIX ASPHALT, 4 1/2"	SO YD	SEE TABLE I ALTERNATE QUANTITIES																		
35101600	AGGREGATE BASE COURSE, TYPE B 4"	SO YD	466													466					
35501310	HOT-MIX ASPHALT BASE COURSE, 6 1/2"	SO YD	SEE TABLE I ALTERNATE QUANTITIES																		
35501317	HOT-MIX ASPHALT BASE COURSE, 8 1/4"	SO YD	SEE TABLE I ALTERNATE QUANTITIES																		
40600200	BITUMINOUS MATERIALS (PRIME COAT)	TON	SEE TABLE I ALTERNATE QUANTITIES																		
40600300	AGGREGATE (PRIME COAT)	TON	SEE TABLE I ALTERNATE QUANTITIES																		
40600895	CONSTRUCTING TEST STRIP	EACH	SEE TABLE I ALTERNATE QUANTITIES																		
40600982	HOT-MIX ASPHALT SURFACE REMOVAL - BUTT JOINT	SO YD	SEE TABLE I ALTERNATE QUANTITIES																		
40603148	POLYMERIZED HOT-MIX ASPHALT, BINDER COURSE, STONE MATRIX ASPHALT, N80	TON	SEE TABLE I ALTERNATE QUANTITIES																		
40603153	POLYMERIZED HOT-MIX ASPHALT, SURFACE COURSE, STONE MATRIX ASPHALT, N80	TON	SEE TABLE I ALTERNATE QUANTITIES																		

△ * Specialty Items

△ * Specialty Items

Rev. 9-11-12

TYLIN INTERNATIONAL	USER NAME	DESIGNED - EMK	REVISION	STATE OF ILLINOIS DEPARTMENT OF TRANSPORTATION	147TH STREET PROJECT SUMMARY OF QUANTITIES		F.A.I. R.T.E.	SECTION	COUNTY	TOTAL SHEETS	SHEET NO.
	PLIST SCALE	DRAWN - EMK	REVISION		SCALE: NTS	SHEET NO. 1 OF 11 SHEETS	STA.	10 STA.	COOK	577	4
	PLIST DATE	CHECKED - SES	REVISION								CONTRACT NO. GOM57
		DATE - 5/23/2012	REVISION								

prj60254067_2943\road\p10_147th\CF10_500_SHT01.dgn

CODE NUMBER	ITEM DESCRIPTION	UNIT	TOTAL PART 1	ROADWAY RECONSTRUCTION 0004				LIGHTING 0021				SIGNING 0021		UTILITIES 0043		TRAFFIC SIGNALS 0021				INTER-CONNECT 0021		
				XX% FEDERAL XX% STATE	100% DIXMOOR	100% HARVEY	100% COOK COUNTY	XX% FEDERAL XX% STATE	100% MIDLOTHIAN	100% DIXMOOR	100% HARVEY	100% POSEN	XX% FEDERAL XX% STATE	100% COOK COUNTY	100% POSEN	100% HARVEY	XX% FEDERAL XX% STATE	100% MIDLOTHIAN	100% POSEN	100% HARVEY	XX% FEDERAL XX% STATE	
40701881	HOT-MIX ASPHALT PAVEMENT (FULL DEPTH), 10"	SO YD		SEE TABLE 1 ALTERNATE QUANTITIES																		
42000316	PORTLAND CEMENT CONCRETE PAVEMENT 8 3/4" (JOINTED)	SO YD		SEE TABLE 1 ALTERNATE QUANTITIES																		
42000401	PORTLAND CEMENT CONCRETE PAVEMENT 9" (JOINTED)	SO YD	3488	3488																		
42000406	PORTLAND CEMENT CONCRETE PAVEMENT 9 1/4" (JOINTED)	SO YD		SEE TABLE 1 ALTERNATE QUANTITIES																		
42000501	PORTLAND CEMENT CONCRETE PAVEMENT 10" (JOINTED)	SO YD		SEE TABLE 1 ALTERNATE QUANTITIES																		
42000521	PORTLAND CEMENT CONCRETE PAVEMENT 11" (JOINTED)	SO YD	8661	8661																		
42001100	HIGH-EARLY-STRENGTH PORTLAND CEMENT CONCRETE PAVEMENT 10"	SO YD		SEE TABLE 1 ALTERNATE QUANTITIES																		
42001300	PROTECTIVE COAT	SO YD		SEE TABLE 1 ALTERNATE QUANTITIES																		
42300200	PORTLAND CEMENT CONCRETE DRIVEWAY PAVEMENT, 6 INCH	SO YD	344	92																		
42300400	PORTLAND CEMENT CONCRETE DRIVEWAY PAVEMENT, 8 INCH	SO YD	2031	1882																40		
42400200	PORTLAND CEMENT CONCRETE SIDEWALK 5 INCH	SO FT	104054	96249	375	2243	994													4193		
42400800	DETECTABLE WARNINGS	SO FT	1193	1117			60													16		
44000100	PAVEMENT REMOVAL	SO YD	86160	82460			3700															
44000157	HOT-MIX ASPHALT SURFACE REMOVAL, 2"	SO YD	216	216																		
44000200	DRIVEWAY PAVEMENT REMOVAL	SO YD	7411	7087			284													40		
44000500	COMBINATION CURB AND GUTTER REMOVAL	FOOT	22042	20801			1241															
44000600	SIDEWALK REMOVAL	SO FT	62600	56117			2290													4193		
44003100	MEDIAN REMOVAL	SO FT	25667	19751			5916															
44004250	PAVED SHOULDER REMOVAL	SO YD	2400	2400																		
44201821	CLASS D PATCHES, TYPE IV, 14"	SO YD	1030	1030																		
48101202	AGGREGATE SHOULDERS, TYPE B	CU YD	510	510																		
48203021	HOT-MIX ASPHALT SHOULDERS, 6"	SO YD	453	453																		
48300400	PORTLAND CEMENT CONCRETE SHOULDERS 9"	SO YD	1739	1739																		
48300500	PORTLAND CEMENT CONCRETE SHOULDERS 10"	SO YD	25	25																		
48300600	PORTLAND CEMENT CONCRETE SHOULDERS 11"	SO YD	1834	1834																		
54213669	PRECAST REINFORCED CONCRETE FLARED END SECTIONS 24"	EACH	1	1																		
54213675	PRECAST REINFORCED CONCRETE FLARED END SECTIONS 30"	EACH	1	1																		
54247130	GRATING FOR CONCRETE FLARED END SECTION 24"	EACH	1	1																		
54247150	GRATING FOR CONCRETE FLARED END SECTION 30"	EACH	1	1																		
550A0050	STORM SEWERS, CLASS A, TYPE 1 12"	FOOT	4145	4145																		
550A0070	STORM SEWERS, CLASS A, TYPE 1 15"	FOOT	928	928																		
550A0090	STORM SEWERS, CLASS A, TYPE 1 18"	FOOT	272	272																		
550A0110	STORM SEWERS, CLASS A, TYPE 1 21"	FOOT	225	225																		
550A0120	STORM SEWERS, CLASS A, TYPE 1 24"	FOOT	1152	1152																		
550A0140	STORM SEWERS, CLASS A, TYPE 1 30"	FOOT	358	358																		
550A0160	STORM SEWERS, CLASS A, TYPE 1 36"	FOOT	3811	3811																		

358 358
3811 3811

Rev. 9-11-12

TYLIN INTERNATIONAL	USER NAME	DESIGNED - ENK	REVISION
	DRAWN - ENK	REVISION	
	CHECKED - SES	REVISION	
	DATE - 5/23/2012	REVISION	

STATE OF ILLINOIS
DEPARTMENT OF TRANSPORTATION

147TH STREET PROJECT
SUMMARY OF QUANTITIES

SCALE: NTS SHEET NO. 2 OF 11 SHEETS STA. TO STA.

F.A.I. RTE.	SECTION	COUNTY	TOTAL SHEETS	SHEET NO.
XX	0405-1 & 0506-21 R-1	COOK	577	5
FED. ROAD DIST. NO.		ILLINOIS FED. AID PROJECT		
		CONTRACT NO. 60M57		

\\p100540057-2941\Road\10-147th\10-300-01103.dwg

CODE NUMBER	ITEM DESCRIPTION	UNIT	TOTAL PART 1	ROADWAY RECONSTRUCTION 0004				LIGHTING 0021					SIGNING 0021		UTILITIES 0043		TRAFFIC SIGNALS 0021				INTER-CONNECT 0021	
				XX% FEDERAL XX% STATE	100% DIXMOOR	100% HARVEY	100% COOK COUNTY	XX% FEDERAL XX% STATE	100% MIDLOTHIAN	100% DIXMOOR	100% HARVEY	100% POSEN	XX% FEDERAL XX% STATE	100% COOK COUNTY	100% POSEN	100% HARVEY	XX% FEDERAL XX% STATE	100% MIDLOTHIAN	100% POSEN	100% HARVEY	XX% FEDERAL XX% STATE	
				60251200	CATCH BASINS TO BE ADJUSTED WITH NEW TYPE 8 GRATE	EACH	3	2			1											
60251500	CATCH BASINS TO BE ADJUSTED WITH NEW TYPE 11 FRAME AND GRATE	EACH	4	4																		
60255800	MANHOLES TO BE ADJUSTED WITH NEW TYPE I FRAME, CLOSED LID	EACH	39	30			9															
60261300	INLETS TO BE ADJUSTED WITH NEW TYPE 11 FRAME AND GRATE	EACH	2	2																		
60261540	INLETS TO BE ADJUSTED WITH NEW TYPE 24 FRAME AND GRATE	EACH	10	2			8															
60264140	INLETS TO BE RECONSTRUCTED WITH NEW TYPE 24 FRAME AND GRATE	EACH	1	1																		
60265900	VALVE VAULTS TO BE ADJUSTED WITH NEW TYPE I FRAME, CLOSED LID	EACH	4	4																		
60500040	REMOVING MANHOLES	EACH	37	37																		
60500050	REMOVING CATCH BASINS	EACH	78	78																		
60500060	REMOVING INLETS	EACH	41	41																		
60600605	CONCRETE CURB, TYPE B	FOOT	2338	2237			101															
60603800	COMBINATION CONCRETE CURB AND GUTTER, TYPE B-6.12	FOOT	2649	2649																		
60605000	COMBINATION CONCRETE CURB AND GUTTER, TYPE B-6.24	FOOT	23287	22045			1242															
60608600	COMBINATION CONCRETE CURB AND GUTTER, TYPE M-6.06	FOOT	153	153																		
60610400	COMBINATION CONCRETE CURB AND GUTTER, TYPE M-6.24	FOOT	177	177																		
60610900	COMBINATION CONCRETE CURB AND GUTTER, TYPE M-6.24 (VARIABLE WIDTH GUTTER FLAG)	FOOT	78	78																		
60618300	CONCRETE MEDIAN SURFACE, 4 INCH	SO FT	8351	8351																		
60618800	CONCRETE MEDIAN, TYPE SB	SO FT	7515	7515																		
60619200	CONCRETE MEDIAN, TYPE SB-6.06	SO FT	1689	1689																		
60619600	CONCRETE MEDIAN, TYPE SB-6.12	SO FT	3030	3030																		
X6060501	CORRUGATED MEDIAN (SPECIAL)	SO FT	6220	3002			3218															
*63000001	STEEL PLATE BEAM GUARDRAIL, TYPE A, 6 FOOT POSTS	FOOT	1125	1125																		
*63100045	TRAFFIC BARRIER TERMINAL, TYPE 2	EACH	2	2																		
*63100085	TRAFFIC BARRIER TERMINAL, TYPE 6	EACH	1	1																		
*63100089	TRAFFIC BARRIER TERMINAL, TYPE 6B	EACH	1	1																		
*63100167	TRAFFIC BARRIER TERMINAL, TYPE I (SPECIAL) TANGENT	EACH	3	3																		
63200310	GUARDRAIL REMOVAL	FOOT	1013	1013																		
64200116	SHOULDER RUMBLE STRIPS, 16 INCH	FOOT	4218	4218																		
66400305	CHAIN LINK FENCE, 6'	FOOT	594	594																		
66900200	NON-SPECIAL WASTE DISPOSAL	CU YD	10600	10600																		
66900400	SPECIAL WASTE GROUNDWATER DISPOSAL	GALLON	9600	9600																		
66900450	SPECIAL WASTE PLANS AND REPORTS	L SUM	1	1																		
66900530	SOIL DISPOSAL ANALYSIS	EACH	8	8																		
66901000	BACKFILL PLUGS	CU YD	70	70																		
X6700410	ENGINEER'S FIELD OFFICE, TYPE A (SPECIAL)	CAL MO	28	28																		
67100100	MOBILIZATION	L SUM	1	1																		

Rev. 9-11-12

TYLIN INTERNATIONAL	USER NAME	DESIGNED - EMK	REVISED -	STATE OF ILLINOIS DEPARTMENT OF TRANSPORTATION	147TH STREET PROJECT SUMMARY OF QUANTITIES	F.A.I. RTE.	SECTION	COUNTY	TOTAL SHEETS	SHEET NO.	
	FLY SCALE	DRAWN - EMK	REVISED -			XX	(0405-1 & 0506-2) R-1	COOK	577	7	
	FLY DATE	CHECKED - SES	REVISED -	SCALE: NTS	SHEET NO. 4 OF 11 SHEETS	STA.	TO STA.	CONTRACT NO. 60M57			
		DATE 5/23/2012	REVISED -	FED. ROAD DIST. NO.			ILLINOIS FED. AID PROJECT				

CODE NUMBER	ITEM DESCRIPTION	UNIT	TOTAL PART	ROADWAY RECONSTRUCTION 0004				LIGHTING 0021					SIGNING 0021		UTILITIES 0043		TRAFFIC SIGNALS 0021				INTER-CONNECT 0021
				XX% FEDERAL XX% STATE	100% DIXMOOR	100% HARVEY	100% COOK COUNTY	XX% FEDERAL XX% STATE	100% MIDLOTHIAN	100% DIXMOOR	100% HARVEY	100% POSEN	XX% FEDERAL XX% STATE	100% COOK COUNTY	100% POSEN	100% HARVEY	XX% FEDERAL XX% STATE	100% MIDLOTHIAN	100% POSEN	100% HARVEY	XX% FEDERAL XX% STATE
				70103819	TRAFFIC CONTROL SURVEILLANCE	CAL DA	577	577													
70106800	CHANGEABLE MESSAGE SIGN	CAL MO	96	96																	
70300240	TEMPORARY PAVEMENT MARKING - LINE 6"	FOOT	6113	6113																	
70301000	WORK ZONE PAVEMENT MARKING REMOVAL	SO FT	113609	113609																	
70400100	TEMPORARY CONCRETE BARRIER	FOOT	2050	2050																	
70400200	RELOCATE TEMPORARY CONCRETE BARRIER	FOOT	4063	4063																	
*72000100	SIGN PANEL - TYPE 1	SO FT	1431									1285	40				106				
*72000200	SIGN PANEL - TYPE 2	SO FT	49									49									
*72000300	SIGN PANEL - TYPE 3	SO FT	38									38									
72400100	REMOVE SIGN PANEL ASSEMBLY - TYPE A	EACH	20									18	2								
72400200	REMOVE SIGN PANEL ASSEMBLY - TYPE B	EACH	11									11									
72400310	REMOVE SIGN PANEL - TYPE 1	SO FT	848									811	4				31		2		
72400320	REMOVE SIGN PANEL - TYPE 2	SO FT	277									45					224		8		
72400330	REMOVE SIGN PANEL - TYPE 3	SO FT	38									38									
*72400600	RELOCATE SIGN PANEL ASSEMBLY - TYPE B	SO FT	23									23									
*72400710	RELOCATE SIGN PANEL - TYPE 1	SO FT	75									42					31		2		
*72400720	RELOCATE SIGN PANEL - TYPE 2	SO FT	267									35					224		8		
*72800100	TELESCOPING STEEL SIGN SUPPORT	FOOT	1787									1712	75								
*73000100	WOOD SIGN SUPPORT	FOOT	34									34									
*73100100	BASE FOR TELESCOPING STEEL SIGN SUPPORT	EACH	33									33									
*78000100	THERMOPLASTIC PAVEMENT MARKING - LETTERS AND SYMBOLS	SO FT	SEE TABLE 1 ALTERNATE QUANTITIES																		
*78000200	THERMOPLASTIC PAVEMENT MARKING - LINE 4"	FOOT	SEE TABLE 1 ALTERNATE QUANTITIES																		
*78000400	THERMOPLASTIC PAVEMENT MARKING - LINE 6"	FOOT	SEE TABLE 1 ALTERNATE QUANTITIES																		
*78000500	THERMOPLASTIC PAVEMENT MARKING - LINE 8"	FOOT	SEE TABLE 1 ALTERNATE QUANTITIES																		
*78000600	THERMOPLASTIC PAVEMENT MARKING - LINE 12"	FOOT	SEE TABLE 1 ALTERNATE QUANTITIES																		
*78000650	THERMOPLASTIC PAVEMENT MARKING - LINE 24"	FOOT	SEE TABLE 1 ALTERNATE QUANTITIES																		
*78008200	POLYUREA PAVEMENT MARKING TYPE 1 - LETTERS AND SYMBOLS	SO FT	SEE TABLE 1 ALTERNATE QUANTITIES																		
*78008210	POLYUREA PAVEMENT MARKING TYPE 1 - LINE 4"	FOOT	SEE TABLE 1 ALTERNATE QUANTITIES																		
*78008230	POLYUREA PAVEMENT MARKING TYPE 1 - LINE 6"	FOOT	SEE TABLE 1 ALTERNATE QUANTITIES																		
*78008240	POLYUREA PAVEMENT MARKING TYPE 1 - LINE 8"	FOOT	SEE TABLE 1 ALTERNATE QUANTITIES																		
*78008250	POLYUREA PAVEMENT MARKING TYPE 1 - LINE 12"	FOOT	SEE TABLE 1 ALTERNATE QUANTITIES																		
*78008270	POLYUREA PAVEMENT MARKING TYPE 1 - LINE 24"	FOOT	SEE TABLE 1 ALTERNATE QUANTITIES																		
*78100100	RAISED REFLECTIVE PAVEMENT MARKER	EACH	1205	1173				32													
*78200100	MONODIRECTIONAL PRISMATIC BARRIER REFLECTOR	EACH	164	164																	
*78200410	GUARDRAIL MARKERS, TYPE A	SO YD	26	26																	
*78201000	TERMINAL MARKERS - DIRECT APPLIED	EACH	3	3																	

Specialty Items

Rev. 9-11-12

TYLIN INTERNATIONAL	USER NAME	DESIGNED - EMK	REVISOR -	STATE OF ILLINOIS DEPARTMENT OF TRANSPORTATION	147TH STREET PROJECT SUMMARY OF QUANTITIES	F.A.I. RTE.	SECTION	COUNTY	TOTAL SHEETS	SHEET NO.
	FLY SCALE	DRAWN - EMK	REVISION			XX	(0405-1 & 0506-2) R-1	COOK	577	8
	FLY DATE	CHECKED - SES	REVISION			CONTRACT NO. 60M57				
		DATE 5/23/2012	REVISION							

5/23/12 10:57 AM

CODE NUMBER	ITEM DESCRIPTION	UNIT	TOTAL PART 1	ROADWAY RECONSTRUCTION				LIGHTING					SIGNING		UTILITIES		TRAFFIC SIGNALS				INTER-CONNECT
				0004				0021					0021		0043		0021				0021
				XXZ FEDERAL XXZ STATE	100% DIXMOOR	100% HARVEY	100% COOK COUNTY	XXZ FEDERAL XXZ STATE	100% MIDLOTHIAN	100% DIXMOOR	100% HARVEY	100% POSEN	XXZ FEDERAL XXZ STATE	100% COOK COUNTY	100% POSEN	100% HARVEY	XXZ FEDERAL XXZ STATE	100% MIDLOTHIAN	100% POSEN	100% HARVEY	XXZ FEDERAL XXZ STATE
78300100	PAVEMENT MARKING REMOVAL	50 FT	11756	11239			517														
78300200	RAISED REFLECTIVE PAVEMENT MARKER REMOVAL	EACH	1205	1173			32														
*80400100	ELECTRIC SERVICE INSTALLATION	EACH	1					0.57	0.08				0.35								
*80400200	ELECTRIC UTILITY SERVICE CONNECTION	L SUM	1					0.57	0.08				0.35								
*80500020	SERVICE INSTALLATION - POLE MOUNTED	EACH	4														4				
*81028200	UNDERGROUND CONDUIT, GALVANIZED STEEL, 2" DIA.	FOOT	10034	680													5160	65		4129	
*81028210	UNDERGROUND CONDUIT, GALVANIZED STEEL, 2 1/2" DIA.	FOOT	547														545	2			
*81028220	UNDERGROUND CONDUIT, GALVANIZED STEEL, 3" DIA.	FOOT	4623					3070	79		67	770					630	7			
*81028240	UNDERGROUND CONDUIT, GALVANIZED STEEL, 4" DIA.	FOOT	2714														2676	38			
*81100600	CONDUIT ATTACHED TO STRUCTURE, 2" DIA., GALVANIZED STEEL	FOOT	152																		152
*81300555	JUNCTION BOX, STAINLESS STEEL, ATTACHED TO STRUCTURE, 12" X 12" X 8"	EACH	2																		2
*81400100	HANDHOLE	EACH	39					1									27.5	0.5		10.0	
*81400200	HEAVY-DUTY HANDHOLE	EACH	16														15.6	0.4			
*81400300	DOUBLE HANDHOLE	EACH	10														9.8	0.2			
*81603081	UNIT DUCT, 600V, 3-1C NO.2, 1/C NO.4 GROUND, (XLP-TYPE USE), 1 1/2" DIA. POLYETHYLENE	FOOT	14108					13887				221									
*81603090	UNIT DUCT, 600V, 3-1C NO.4, 1/C NO.6 GROUND, (XLP-TYPE USE), 1 1/4" DIA. POLYETHYLENE	FOOT	9039					6369	222				2448								
*81702220	ELECTRIC CABLE IN CONDUIT, 600V (XLP-TYPE USE) 1/C 350MCM	FOOT	1602					1457	27				118								
*81800290	AERIAL CABLE, 3-1/C NO. 1/0 WITH MESSENGER WIRE	FOOT	1068					1068													
*81800300	AERIAL CABLE, 3-1/C NO. 2 WITH MESSENGER WIRE	FOOT	16788					13742	406			239	2401								
*82102400	LUMINAIRE, SODIUM VAPOR, HORIZONTAL MOUNT, 400 WATT	EACH	192					148	8		6	30									
*82105600	LUMINAIRE, SODIUM VAPOR, HIGH MAST, HORIZONTAL MOUNT, 400 WATT	EACH	68					68													
*83050710	LIGHT POLE, ALUMINUM, 47.5 FT. M.H., 6 FT. MAST ARM	EACH	64					40	4		3	17									
*83050800	LIGHT POLE, ALUMINUM, 47.5 FT. M.H., 12 FT. MAST ARM	EACH	20					20													
*83600200	LIGHT POLE FOUNDATION, 24" DIAMETER	FOOT	753					525	38		28	162									
83700300	LIGHT TOWER FOUNDATION, 48" DIAMETER	FOOT	240					240													
*83800205	BREAKAWAY DEVICE, TRANSFORMER BASE, 15 INCH BOLT CIRCLE	EACH	84					60	4		3	17									
84100110	REMOVAL OF TEMPORARY LIGHTING UNIT	EACH	97					74	5		3	15									
84200500	REMOVAL OF LIGHTING UNIT, SALVAGE	EACH	85					50	2	2	19	12									
84200804	REMOVAL OF POLE FOUNDATION	EACH	73					50	2	2	19										
84500130	REMOVAL OF LIGHTING CONTROLLER FOUNDATION	EACH	2					1		1											
*86200200	UNINTERRUPTABLE POWER SUPPLY, STANDARD	EACH	1														1.0				
*87100020	FIBER OPTIC CABLE IN CONDUIT, NO. 62.5/125, MMI2F SM12F	FOOT	9188																		9188
*87200400	SPAN WIRE	FOOT	406														406				
*87200500	TETHER WIRE	FOOT	288														288				
*87300925	ELECTRIC CABLE IN CONDUIT, TRACER, NO. 14 1C	FOOT	9032																		9032
*87301215	ELECTRIC CABLE IN CONDUIT, SIGNAL NO. 14 2C	FOOT	7803														7586	217			

Specialty Items

Rev. 9-11-12

TYLIN INTERNATIONAL	USER NAME	DESIGNED - EMR	REVISED -
	DRAWN	EMK	REVISED -
	CHECKED	SES	REVISED -
	DATE	5/23/2012	REVISED -

STATE OF ILLINOIS
DEPARTMENT OF TRANSPORTATION

147TH STREET PROJECT
SUMMARY OF QUANTITIES

SCALE: NTS SHEET NO. 6 OF 11 SHEETS STA. TO STA.

F.A.I. RTE.	SECTION	COUNTY	TOTAL SHEETS	SHEET NO.
XX	(0405-1 & 0506-2) R-1	COOK	577	9
CONTRACT NO. 60M57				

CODE NUMBER	ITEM DESCRIPTION	UNIT	TOTAL PART 1	ROADWAY RECONSTRUCTION				LIGHTING					SIGNING		UTILITIES		TRAFFIC SIGNALS				INTER-CONNECT
				0004				0021					0021		0043		0021				0021
				XX% FEDERAL XX% STATE	100% DIXMOOR	100% HARVEY	100% COOK COUNTY	XX% FEDERAL XX% STATE	100% MIDLOTHIAN	100% DIXMOOR	100% HARVEY	100% POSEN	XX% FEDERAL XX% STATE	100% COOK COUNTY	100% POSEN	100% HARVEY	XX% FEDERAL XX% STATE	100% MIDLOTHIAN	100% POSEN	100% HARVEY	XX% FEDERAL XX% STATE
87301235	ELECTRIC CABLE IN CONDUIT, SIGNAL NO. 14 3C	FOOT	11059													8125	355	2105	474		
87301245	ELECTRIC CABLE IN CONDUIT, SIGNAL NO. 14 5C	FOOT	17804													17475		329			
87301255	ELECTRIC CABLE IN CONDUIT, SIGNAL NO. 14 7C	FOOT	5430													5297		131			
87301305	ELECTRIC CABLE IN CONDUIT, LEAD-IN, NO. 14 1 PAIR	FOOT	31522	110												30872		540			
87301805	ELECTRIC CABLE IN CONDUIT, SERVICE, NO. 6 2 C	FOOT	1312													1278		34			
87301900	ELECTRIC CABLE IN CONDUIT, EQUIPMENT GROUNDING CONDUCTOR, NO. 6 1C	FOOT	7883													7753		130			
87302212	ELECTRIC CABLE AERIAL SUSPENDED, SIGNAL, NO. 14 2C	FOOT	854													854					
87302225	ELECTRIC CABLE AERIAL SUSPENDED, SIGNAL, NO. 14 3C	FOOT	953													826		127			
87302245	ELECTRIC CABLE AERIAL SUSPENDED, SIGNAL, NO. 14 5C	FOOT	1254													1254					
87302505	ELECTRIC CABLE AERIAL SUSPENDED, SERVICE, NO. 6 2 C	FOOT	146													146					
87502440	TRAFFIC SIGNAL POST, GALVANIZED STEEL 10 FT.	EACH	4													4					
87502480	TRAFFIC SIGNAL POST, GALVANIZED STEEL 14 FT.	EACH	6													6					
87502500	TRAFFIC SIGNAL POST, GALVANIZED STEEL 16 FT.	EACH	4													4.0					
87700130	STEEL MAST ARM ASSEMBLY AND POLE, 18 FT.	EACH	1													1.0					
87700190	STEEL MAST ARM ASSEMBLY AND POLE, 30 FT.	EACH	1													0.9		0.1			
87700220	STEEL MAST ARM ASSEMBLY AND POLE, 36 FT.	EACH	2													1.9		0.1			
87700240	STEEL MAST ARM ASSEMBLY AND POLE, 40 FT.	EACH	1													0.9		0.1			
87700250	STEEL MAST ARM ASSEMBLY AND POLE, 42 FT.	EACH	2													2.0					
87700260	STEEL MAST ARM ASSEMBLY AND POLE, 44 FT.	EACH	2													1.9		0.1			
87700270	STEEL MAST ARM ASSEMBLY AND POLE, 46 FT.	EACH	1													1.0					
87700310	STEEL MAST ARM ASSEMBLY AND POLE, 54 FT.	EACH	1													1					
87700330	STEEL MAST ARM ASSEMBLY AND POLE, 56 FT.	EACH	1													1					
87700340	STEEL MAST ARM ASSEMBLY AND POLE, 58 FT.	EACH	1													1					
87700424	STEEL MAST ARM ASSEMBLY AND POLE, 72 FT.	EACH	1													1					
87702435	STEEL MAST ARM ASSEMBLY AND POLE WITH DUAL MAST ARMS, 28 FT. AND 62 FT.	EACH	1													1					
87702718	STEEL MAST ARM ASSEMBLY AND POLE WITH DUAL MAST ARMS, 46 FT. AND 30 FT.	EACH	1													1.0					
87800100	CONCRETE FOUNDATION, TYPE A	EACH	60													59.6		0.4			
87800150	CONCRETE FOUNDATION, TYPE C	FOOT	12													12					
87800400	CONCRETE FOUNDATION, TYPE E 30-INCH DIAMETER	FOOT	64													58		6			
87800415	CONCRETE FOUNDATION, TYPE E 36-INCH DIAMETER	FOOT	145													141		4			
87800420	CONCRETE FOUNDATION, TYPE E 42-INCH DIAMETER	FOOT	141													141					
87900200	DRILL EXISTING HANDHOLE	EACH	31													27		2		2	
88030020	SIGNAL HEAD, LED, I-FACE, 3 SECTION, MAST-ARM MOUNTED	EACH	42													42.0					
88030050	SIGNAL HEAD, LED, I-FACE, 3 SECTION, BRACKET MOUNTED	EACH	16													16					
88030100	SIGNAL HEAD, LED, I-FACE, 5 SECTION, BRACKET MOUNTED	EACH	6													6.0					
88030110	SIGNAL HEAD, LED, I-FACE, 5 SECTION, MAST-ARM MOUNTED	EACH	7													7.0					

** Specialty Items*

Rev. 9-11-12

TYLIN INTERNATIONAL	USER NAME	DESIGNED	REVIEWED	STATE OF ILLINOIS DEPARTMENT OF TRANSPORTATION	147TH STREET PROJECT SUMMARY OF QUANTITIES		SHEET NO. 7 OF 11 SHEETS	STA. TO STA.	CONTRACT NO. 60M57
	FILED SCALE	DRAWN	EMK		REVISIONS	SECTION			
	CHECKED	SES	REVISIONS						
	DATE	5/23/2012	REVISIONS						

60M57-147th St 10 500 5/10/12.dwg 5/23/2012 5:00:57 PM

CODE NUMBER	ITEM DESCRIPTION	UNIT	TOTAL PART 1	ROADWAY RECONSTRUCTION 0004				LIGHTING 0021				SIGNING 0021		UTILITIES 0043		TRAFFIC SIGNALS 0021				INTER-CONNECT 0021			
				XX% FEDERAL XX% STATE	100% DIXMOOR	100% HARVEY	100% COOK COUNTY	XX% FEDERAL XX% STATE	100% MIDLOTHIAN	100% DIXMOOR	100% HARVEY	100% POSEN	XX% FEDERAL XX% STATE	100% COOK COUNTY	100% POSEN	100% HARVEY	XX% FEDERAL XX% STATE	100% MIDLOTHIAN	100% POSEN	100% HARVEY	XX% FEDERAL XX% STATE		
				*88102717	PEDESTRIAN SIGNAL HEAD, LED, 1-FACE, BRACKET MOUNTED WITH COUNTDOWN TIMER	EACH	8															8	
*88102747	PEDESTRIAN SIGNAL HEAD, LED, 2-FACE, BRACKET MOUNTED WITH COUNTDOWN TIMER	EACH	10															10.0					
*88200110	TRAFFIC SIGNAL BACKPLATE, LOUVERED	EACH	67															67					
*88500100	INDUCTIVE LOOP DETECTOR	EACH	85															83.4		1.6			
*88600100	DETECTOR LOOP, TYPE I	FOOT		SEE TABLE 1 ALTERNATE QUANTITIES																			
*88600700	PREFORMED DETECTOR LOOP	FOOT		SEE TABLE 1 ALTERNATE QUANTITIES																			
*88700200	LIGHT DETECTOR	EACH	8																		8		
*88700300	LIGHT DETECTOR AMPLIFIER	EACH	3																		3		
*88800100	PEDESTRIAN PUSH-BUTTON	EACH	54															52.4		1.6			
*89000100	TEMPORARY TRAFFIC SIGNAL INSTALLATION	EACH	6															5.8		0.2			
*89500100	RELOCATE EXISTING SIGNAL HEAD	EACH	30															27.6		2.4			
*89500200	RELOCATE EXISTING PEDESTRIAN SIGNAL HEAD	EACH	21															19.4		1.6			
*89501100	RELOCATE EXISTING TRAFFIC SIGNAL CONTROLLER	EACH	3															3.0					
*89501150	RELOCATE EXISTING TRAFFIC SIGNAL POST	EACH	1															0.9		0.1			
*89501250	RELOCATE EXISTING TRAFFIC SIGNAL EQUIPMENT	EACH	3															3.0					
*89501300	RELOCATE EXISTING MAST ARM ASSEMBLY AND POLE	EACH	3															2.7		0.3			
89502375	REMOVE EXISTING TRAFFIC SIGNAL EQUIPMENT	EACH	7															6.8		0.2			
89502380	REMOVE EXISTING HANDHOLE	EACH	50							1								47.9		1.1			
89502382	REMOVE EXISTING DOUBLE HANDHOLE	EACH	7															7.0					
89502385	REMOVE EXISTING CONCRETE FOUNDATION	EACH	43															42.2		0.8			
*A2000316	TREE, ACER MIYABE MORTON (STATE STREET MIYABEI MAPLE), 2" CALIPER, BALLED AND BURLAPPED	EACH	5	5																			
*A2002008	TREE, AESCULUS FLAVEA (YELLOW SWEET BUCKEYE), 2" CALIPER, BALLED AND BURLAPPED	EACH	3	3																			
*A2002916	TREE, CELTIS OCCIDENTALIS (COMMON HACKBERRY), 2" CALIPER, BALLED AND BURLAPPED	EACH	12	12																			
*A2004716	TREE, GLEDITSIA TRIACANTHOS INERMIS SHADEMASTER (SHADEMASTER THORNLESS COMMON HONEYLOCUST), 2" CALIPER, BALLED AND BURLAPPED	EACH	10	10																			
*A2005015	TREE, GYMNOCLADUS DIOICUS (KENTUCKY COFFEETREE), 8' HEIGHT, MULTI-STEM FORM, BALLED AND BURLAPPED	EACH	41	41																			
*A2005020	TREE, GYMNOCLADUS DIOICUS (KENTUCKY COFFEETREE), 2-1/2" CALIPER, BALLED AND BURLAPPED	EACH	11	11																			
*A2006516	TREE, QUERCUS BICOLOR (SWAMP WHITE OAK), 2" CALIPER, BALLED AND BURLAPPED	EACH	18	18																			
*A2006616	TREE, QUERCUS IMBRICARIA (SHINGLE OAK), 2" CALIPER, BALLED AND BURLAPPED	EACH	3	3																			
*A2006716	TREE, QUERCUS MACROCARPA (BUR OAK), 2" CALIPER, BALLED AND BURLAPPED	EACH	3	3																			
*A2008468	TREE, ULMUS AMERICANA PRINCETON (PRINCETON AMERICAN ELM), 2" CALIPER, BALLED AND BURLAPPED	EACH	6	6																			
*A2012000	TREE, AESCULUS ARNOLDIANA (AUTUMN SPLENDOR HORSECHESTNUT), 2" CALIPER, BALLED AND BURLAPPED	EACH	9	9																			
*B2001666	TREE, CRATAEGUS CRUSGALLI INERMIS (THORNLESS COCKSPUR HAWTHORN), 6' HEIGHT, SHRUB FORM, BALLED AND BURLAPPED	EACH	24	24																			
*B2003316	TREE, MALUS DONALD WYMAN (DONALD WYMAN CRABAPPLE), 2" CALIPER, TREE FORM, BALLED AND BURLAPPED	EACH	11	11																			
*B2003516	TREE, MALUS HARVEST GOLD (HARVEST GOLD CRABAPPLE), 2" CALIPER, TREE FORM, BALLED AND BURLAPPED	EACH	3	3																			
*B2005366	TREE, MALUS ZUMI CALOCARPA (REDBUD ZUMI CRABAPPLE), 6' HEIGHT, CLUMP FORM, BALLED AND BURLAPPED	EACH	31	31																			
*B2006116	TREE, SYRINGA PEKINENSIS MORTON (CHINA SNOW PEKING LILAC), 2" CALIPER, TREE FORM, BALLED AND BURLAPPED	EACH	17	17																			

▲ *Specialty Items

▲ Rev. 9-11-12

Rev.

TYLIN INTERNATIONAL	USER NAME	DESIGNED - EMK	REVISED -
	PLLOT SCALE	DRAWN - EMK	REVISED -
	PLLOT DATE	CHECKED - SES	REVISED -
		DATE - 5/23/2012	REVISED -

STATE OF ILLINOIS
DEPARTMENT OF TRANSPORTATION

147TH STREET PROJECT
SUMMARY OF QUANTITIES

F.A.I. RTE.	SECTION	COUNTY	TOTAL SHEETS	SHEET NO.
XX	(0405-1 & 0506-2) R-1	COOK	577	11
FED. ROAD DIST. NO.		ILLINOIS FED. AID PROJECT		CONTRACT NO. 60M57

SCALE: NTS SHEET NO. 8 OF 11 SHEETS STA. TO STA.

10:55:29 AM 7/3/2012 R:\60254057-294\road\p10_147th\PI0_500_SHT08.dgn

CODE NUMBER	ITEM DESCRIPTION	UNIT	TOTAL PART 1	ROADWAY RECONSTRUCTION 0004				LIGHTING 0021				SIGNING 0021		UTILITIES 0043		TRAFFIC SIGNALS 0021				INTER-CONNECT 0021	
				XX% FEDERAL XX% STATE	100% DIXMOOR	100% HARVEY	100% COOK COUNTY	XX% FEDERAL XX% STATE	100% MIDLOTHIAN	100% DIXMOOR	100% HARVEY	100% POSEN	XX% FEDERAL XX% STATE	100% COOK COUNTY	100% POSEN	100% HARVEY	XX% FEDERAL XX% STATE	100% MIDLOTHIAN	100% POSEN	100% HARVEY	XX% FEDERAL XX% STATE
				B2006316	TREE, SYRINGA RETICULATA IVORY SILK (IVORY SILK JAPANESE TREE LILAC), 2" CALIPER, TREE FORM, BALLED AND BURLAPPED	EACH	12	12													
B2010070	TREE, CLADRSTIS KENTUCKEA (AMERICAN YELLOWWOOD), 2" CALIPER, BALLED AND BURLAPPED	EACH	4	4																	
C2C00324	SHRUB, ARONIA MELANOCARPA IROUOIS BEAUTY (IROUOIS BEAUTY BLACK CHOKEBERRY), 2' HEIGHT, CONTAINER	EACH	430	430																	
C2C05818	SHRUB, RHUS AROMATICA GRO-LOW (GRO-LOW FRAGRANT SUMAC), 18" WIDTH, CONTAINER	EACH	788	788																	
C2010930	SHRUB, SYRINGA MEYERI PALIBIN (DWARF KOREAN LILAC), 2-1/2' HEIGHT, BALLED AND BURLAPPED	EACH	124	124																	
D2002484	EVERGREEN, PINUS FLEXILIS VANDERWOLF'S PYRAMID (VANDERWOLF'S PYRAMID LIMBER PINE), 7' HEIGHT, BALLED AND BURLAPPED	EACH	64	64																	
K0012970	PERENNIAL PLANTS, BULB TYPE	UNIT	558	558																	
K0012990	PERENNIAL PLANTS, ORNAMENTAL TYPE, GALLON POT	UNIT	162.5	162.5																	
K0029634	WEED CONTROL, PRE-EMERGENT GRANULAR HERBICIDE.	POUND	100	100																	
X0322433	LIGHT TOWER, SERVICE PAD	EACH	8								8										
X0322434	LIGHT TOWER, SERVICE PAD, SPECIAL	EACH	2								2										
X0322727	POLYETHYLENE DUCT 1 1/4"	FOOT	27	27																	
X0322916	PROPOSED STORM SEWER CONNECTION TO EXISTING STORM SEWER	EACH	2	2																	
X0323713	RADIO INTERCONNECT SYSTEM COMPLETE, LOCAL	EACH	1															1			
X0324085	EMERGENCY VEHICLE PRIORITY SYSTEM LINE SENSOR CABLE, NO. 20 3/C	FOOT	2934																355	2105	474
X0324097	COARSE SAND PLACEMENT, 2"	SO YD	6411	6411																	
56200500	WATER SERVICE LINE 1 1/2"	FOOT	100																		100
56500800	DOMESTIC WATER SERVICE BOXES	EACH	2																		2
X0325132	SHAPING AND GRADING AT HIGH MAST LIGHT TOWER	SO YD	224								224										
X0326133	TEMPORARY WOOD POLE, 45 FEET, CLASS 5	EACH	4																4		
X0326885	VIDEO DETECTION SYSTEM	EACH	1																1		
X0327076	SERVICE STATION EQUIPMENT REMOVAL	L SUM	1	1																	
X2020502	BRACED EXCAVATION	CU YD	126	126																	
X2800510	INLET FILTER CLEANING	EACH	1500	1410							90										
X4021000	TEMPORARY ACCESS (PRIVATE ENTRANCE)	EACH	12	12																	
X4022000	TEMPORARY ACCESS (COMMERCIAL ENTRANCE)	EACH	43	43																	
X4023000	TEMPORARY ACCESS (ROAD)	EACH	20	20																	
X4024100	TEMPORARY ACCESS (WINTERIZE)	SO YD	8637	8637																	
X4063500	PRELIMINARY TEST STRIP	EACH	SEE TABLE 1 ALTERNATE QUANTITIES																		
X4400110	TEMPORARY PAVEMENT REMOVAL	SO YD	22847	20914							1933										
X4403800	MEDIAN SURFACE REMOVAL	SO FT	14370	14370																	
X6640210	TEMPORARY CHAIN LINK FENCE (PORTABLE)	FOOT	390	390																	
X6640300	CHAIN LINK FENCE REMOVAL	FOOT	2320	2320																	
X7010216	TRAFFIC CONTROL AND PROTECTION, (SPECIAL)	L SUM	1	1																	
X7011015	TRAFFIC CONTROL AND PROTECTION (EXPRESSWAYS)	L SUM	1	1																	
70300510	PAVEMENT MARKING TAPE, TYPE III - LETTERS AND SYMBOLS	SO FT	4384	4384																	

Specialty Items

Rev. 9-11-12

TYLIN INTERNATIONAL	USER NAME	DESIGNED - EMK	REVISOR	STATE OF ILLINOIS DEPARTMENT OF TRANSPORTATION	147TH STREET PROJECT SUMMARY OF QUANTITIES	F.A.I. RTE.	SECTION	COUNTY	TOTAL SHEETS	SHEET NO.
	PILOT SCALE	DRAWN - EMK	REVISOR			XX	(0405-1 & 0506-2) R-1	COOK	577	12
	PILOT DATE	CHECKED - SES	REVISOR	SCALE: NTS	SHEET NO. 9 OF 11 SHEETS	STA.	TO STA.	FED. ROAD DIST. NO.	ILLINOIS FED. AID PROJECT	CONTRACT NO. 60M57
		DATE 5/23/2012	REVISOR							

11/20/2012 10:26:05 AM

CODE NUMBER	ITEM DESCRIPTION	UNIT	TOTAL PART 1	ROADWAY RECONSTRUCTION 0004				LIGHTING 0021					SIGNING 0021		UTILITIES 0043		TRAFFIC SIGNALS 0021				INTER-CONNECT 0021			
				XXZ FEDERAL XXZ STATE	100% DIXMOOR	100% HARVEY	100% COOK COUNTY	XXZ FEDERAL XXZ STATE	100% MIDLOTHIAN	100% DIXMOOR	100% HARVEY	100% POSEN	XXZ FEDERAL XXZ STATE	100% COOK COUNTY	100% POSEN	100% HARVEY	XXZ FEDERAL XXZ STATE	100% MIDLOTHIAN	100% POSEN	100% HARVEY	XXZ FEDERAL XXZ STATE			
70300520	PAVEMENT MARKING TAPE, TYPE III, 4 INCH	FOOT	251803	251803																				
70300540	PAVEMENT MARKING TAPE, TYPE III, 6 INCH	FOOT	20141	20141																				
70300550	PAVEMENT MARKING TAPE, TYPE III, 8 INCH	FOOT	2980	2980																				
70300560	PAVEMENT MARKING TAPE, TYPE III, 12 INCH	FOOT	2566	2566																				
70300570	PAVEMENT MARKING TAPE, TYPE III, 24 INCH	FOOT	5333	5333																				
X8250060	TEMPORARY LIGHTING CONTROLLER	EACH	1					0.57	0.10			0.33												
X8250505	LIGHTING CONTROLLER, SPECIAL	EACH	1					0.57	0.08			0.35												
X8350012	LIGHT TOWER, 100 FT. MOUNTING HEIGHT, LUMINAIRE MT. - 12	EACH	10					10																
X8360215	LIGHTPOLE FOUNDATION, 24" DIAMETER, OFFSET	FOOT	45					27				18												
X8570226	FULL-ACTUATED CONTROLLER AND TYPE IV CABINET, SPECIAL	EACH	1														1							
X8730255	ELECTRIC CABLE AERIAL SUSPENDED NO. 20 3/C. TWISTED, SHIELDED	FOOT	127																				127	
X8730312	ELECTRIC CABLE IN CONDUIT, LEAD-IN, NO. 18 4/C. TWISTED, SHIELDED	FOOT	619	619																				
X8800025	SIGNAL HEAD .LED, 1#FACE, 3#SECTION, SPAN WIRE MOUNTED	EACH	12														12							
X8850102	INDUCTION LOOP	FOOT	100	100																				
X8900015	TEMPORARY TRAFFIC SIGNAL INTERCONNECTION SYSTEM	L SUM	1																					1
X8950090	RELOCATE EXISTING LIGHTING CONTROLLER	EACH	2					1		1														
X8950205	REBUILD EXISTING HANDHOLE, SPECIAL	EACH	1	1																				
XX000079	CUT AND CAP EXISTING WATER MAIN	EACH	22																					
X89501420	RELOCATE EXISTING EMERGENCY VEHICLE PRIORITY SYSTEM, COMPLETE	EACH	7															2	3	2				
XX003037	DUCTILE IRON FITTINGS AND ACCESSORIES	POUND	11700										11700											
XX003435	PCC DRIVEWAY REMOVAL AND REPLACEMENT	50 YD	40																					
56400825	FIRE HYDRANT WITH AUXILIARY VALVE, VALVE BOX AND TEE	EACH	8										7	1										
XX006500	SANITARY SEWER SERVICE REMOVAL AND REPLACEMENT	FOOT	42																					
X5611112	DUCTILE IRON WATER MAIN, CLASS 52, WITH POLYETHYLENE ENCASEMENT, 12"	FOOT	3251										3251											
X5611108	DUCTILE IRON WATER MAIN, CLASS 52, WITH POLYETHYLENE ENCASEMENT, 8"	FOOT	892										892											
XX008154	RELOCATE EXISTING RADIO INTERCONNECT SYSTEM	EACH	2																					2
XX008156	LINE STOP 10"	EACH	1										1											
Z0013798	CONSTRUCTION LAYOUT	L SUM	1	1																				
Z0016702	DETOUR SIGNING	L SUM	1	1																				
Z0023204	SEDIMENT CONTROL, SILT FENCE	FOOT	15554	15171																				383
Z0023200	SEDIMENT CONTROL, SILT FENCE MAINTENANCE	FOOT	77770	75855																				1315
Z0030240	IMPACT ATTENUATORS, TEMPORARY (NON-REDIRECTIVE), TEST LEVEL 2	EACH	2	2																				
Z0030250	IMPACT ATTENUATORS, TEMPORARY (NON-REDIRECTIVE), TEST LEVEL 3	EACH	3	3																				
Z0030340	IMPACT ATTENUATORS, RELOCATE (NON-REDIRECTIVE), TEST LEVEL 2	EACH	4	4																				
Z0030350	IMPACT ATTENUATORS, RELOCATE (NON-REDIRECTIVE), TEST LEVEL 3	EACH	2	2																				
Z0030850	TEMPORARY INFORMATION SIGNING	50 FT	781	781																				

* X8250505
 * X8350012
 * X8360215
 * X8570226
 * X8730255
 * X8730312
 * X8800025
 * X8850102
 * X8900015
 * X8950090
 * X8950205
 * X89501420
 * X5611112
 * X5611108
 * XX008154
 * XX008156

Specialty Items

Rev. 9-11-12

Rev.

TYLIN INTERNATIONAL	USER NAME: _____	DESIGNED - EMK	REVISED - _____	STATE OF ILLINOIS DEPARTMENT OF TRANSPORTATION	147TH STREET PROJECT SUMMARY OF QUANTITIES			F.A.I. RTE. _____	SECTION _____	COUNTY _____	TOTAL SHEETS NO. _____
	PLLOT SCALE: _____	DRAWN - EMK	REVISED - _____		XX _____	(0405-1 & 0506-2) R-1	COOK	577	13		
	PLLOT DATE: _____	CHECKED - SES	REVISED - _____		SCALE: NTS SHEET NO. 10 OF 11 SHEETS STA. _____ TO STA. _____			FED. ROAD DIST. NO. _____ ILLINOIS FED. AID PROJECT _____			
								CONTRACT NO. 60M57			

P:\60254057-2\41\road\p10_147th\PI0_500_SHT10.dgn 10:53:32 AM 7/3/2012

CODE NUMBER	ITEM DESCRIPTION	UNIT	TOTAL PART 1	ROADWAY RECONSTRUCTION				LIGHTING					SIGNING		UTILITIES		TRAFFIC SIGNALS				INTER-CONNECT
				0004				0021					0021		0043		0021				0021
				XX% FEDERAL XX% STATE	100% DIXMOOR	100% HARVEY	100% COOK COUNTY	XX% FEDERAL XX% STATE	100% MIDLOTHIAN	100% DIXMOOR	100% HARVEY	100% POSEN	XX% FEDERAL XX% STATE	100% COOK COUNTY	100% POSEN	100% HARVEY	XX% FEDERAL XX% STATE	100% MIDLOTHIAN	100% POSEN	100% HARVEY	XX% FEDERAL XX% STATE
X033020	LUMINAIRE SAFETY CABLE ASSEMBLY	EACH	94					70	4		3	17									
X033028	MAINTENANCE OF LIGHTING SYSTEM	CAL MO	25					20.8	1.0			3.2									
X033056	OPTIMIZE TRAFFIC SIGNAL SYSTEM	EACH	7																		7
X030001	AGGREGATE SUBGRADE IMPROVEMENT	CU YD	3410	3410																	
X0056608	STORM SEWER (WATER MAIN REQUIREMENTS) 12 INCH	FOOT	1864	1864																	
X0056610	STORM SEWER (WATER MAIN REQUIREMENTS) 15 INCH	FOOT	198	198																	
X0056616	STORM SEWER (WATER MAIN REQUIREMENTS) 24 INCH	FOOT	286	286																	
X0056622	STORM SEWER (WATER MAIN REQUIREMENTS) 36 INCH	FOOT	612	612																	
X0062456	TEMPORARY PAVEMENT	SQ YD	22847	20914			1933														
X0067900	STEEL CASINGS 24"	FOOT	101											101							
X0073510	TEMPORARY TRAFFIC SIGNAL TIMING	EACH	7														6.8		0.2		
X0327483	12"x12" TAPPING SLEEVE AND VALVE IN 60" DIA. VALVE VAULT, TYPE 1 FRAME, CLOSED LID	EACH	1											1							
X0327481	6"x6" TAPPING SLEEVE AND VALVE IN 60" DIA. VALVE VAULT, TYPE 1 FRAME, CLOSED LID	EACH	13											13							
X0327482	8"x8" TAPPING SLEEVE AND VALVE IN 60" DIA. VALVE VAULT, TYPE 1 FRAME, CLOSED LID	EACH	1											1							
X5611106	DUCTILE IRON WATER MAIN, 6", CLASS 52, WITH POLYETHYLENE ENCASEMENT	FOOT	36											36							
X0327484	MANHOLES, TYPE A, 8'- DIAMETER, 2 - TYPE 1 FRAMES, CLOSED LIDS (SPECIAL)	EACH	6	6																	
X7702719	STEEL MAST ARM ASSEMBLY AND POLE WITH DUAL MAST ARMS, 46 FT. AND 34 FT.	EACH	1.0																1.0		
X7702795	STEEL MAST ARM ASSEMBLY AND POLE WITH DUAL MAST ARMS, 65 FT. AND 40 FT.	EACH	1																1		
X7702805	STEEL MAST ARM ASSEMBLY AND POLE WITH DUAL MAST ARMS, 66 FT. AND 42 FT.	EACH	1																1		
X1603156	UNIT DUCT, 600V, 5-1C NO. 2, 1/C NO.4 GROUND, (XLP-TYPE USE), 2" DIA. POLYETHYLENE	FOOT	660							660											
X0327486	TEMPORARY WOOD POLE, 60 FOOT, CLASS 4 (INSTALL ONLY)	EACH	86					63	5		3	15									
X0327485	MAST ARM, STREET LIGHTING 15 FT	EACH	96					76	4		3	13									
X2002400	TREE, MAGNOLIA ACUMINATA BUTTERFLIES (BUTTERFLIES CUCUMBER MAGNOLIA), 5' HEIGHT, SHRUB FORM, BALLED AND BURLAPPED	EACH	1	1																	
X0327420	SANITARY SEWER, DUCTILE IRON, 8"	FOOT	42											42							
X0839900	SANITARY SEWER REMOVAL 8"	FOOT	42											42							
X5630006	CUT AND CAP EXISTING 6" WATER MAIN	EACH	12											12							
X5630008	CUT AND CAP EXISTING 8" WATER MAIN	EACH	1											1							
X5630010	CUT AND CAP EXISTING 10" WATER MAIN	EACH	1											1							

△ Specialty Items

△ Rev. 9-11-12

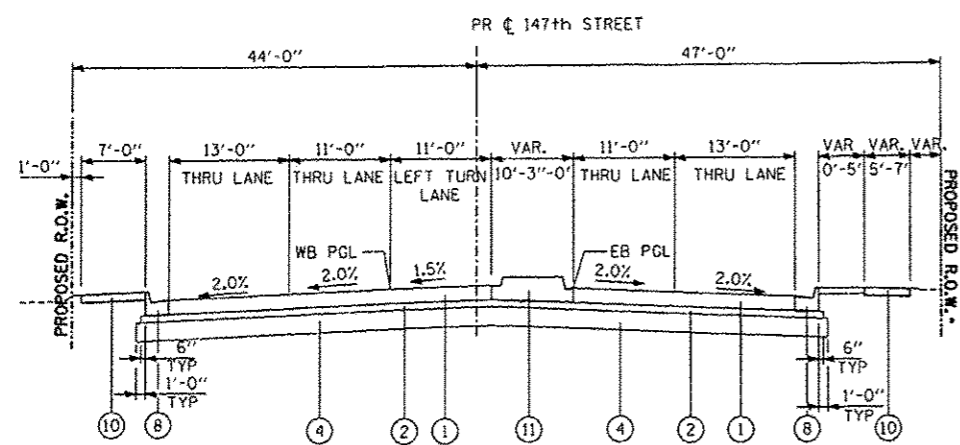
A:\60254057-29\IN\000\10_147TH\10_500L_SHT10.dgn 5:21:20 PM 6/28/2012

TABLE 1 - ALTERNATE QUANTITIES

CODE NUMBER	ITEM DESCRIPTION	UNIT	TOTAL ALT A (PCC)	TOTAL ALT B (PCC)	ROADWAY RECONSTRUCTION 0004				TRAFFIC SIGNALS 0021			
					80% FEDERAL 20% STATE		100% COOK COUNTY		80% FEDERAL 20% STATE			
					ALT A	ALT B	ALT A	ALT B	ALT A	ALT B	ALT A	ALT B
20200100	EARTH EXCAVATION	CU YD	54509	51905	53840	51240	665	665				
31200503	STABILIZED SUB-BASE - HOT-MIX ASPHALT, 4 1/2"	SO YD	85627	12751	85627	2751						
35501310	HOT-MIX ASPHALT BASE COURSE, 6 1/2"	SO YD	46680		46680							
35501317	HOT-MIX ASPHALT BASE COURSE, 8 1/4"	SO YD	22509		22509							
40600200	BITUMINOUS MATERIALS (PRIME COAT)	TON	47		47							
40600300	AGGREGATE (PRIME COAT)	TON	66		66							
40600895	CONSTRUCTING TEST STRIP	EACH	3		3							
40600982	HOT-MIX ASPHALT SURFACE REMOVAL - BUTT JOINT	SO YD	603		603							
40603148	POLYMERIZED HOT-MIX ASPHALT, BINDER COURSE, STONE MATRIX ASPHALT, N80	TON	7750		7750							
40603153	POLYMERIZED HOT-MIX ASPHALT, SURFACE COURSE, STONE MATRIX ASPHALT, N80	TON	7750		7750							
40603595	POLYMERIZED HOT-MIX ASPHALT, SURFACE COURSE, MIX 'F' N90	TON	25		25							
40701881	HOT-MIX ASPHALT PAVEMENT (FULL DEPTH), 10"	SO YD	7175		7175							
42000316	PORTLAND CEMENT CONCRETE PAVEMENT 8 3/4" (JOINTED)	SO YD	7173		7173							
42000406	PORTLAND CEMENT CONCRETE PAVEMENT 9 1/4" (JOINTED)	SO YD	45460		45460							
42000501	PORTLAND CEMENT CONCRETE PAVEMENT 10" (JOINTED)	SO YD	25253	3992	21261		3992	3992				
42001100	HIGH-EARLY-STRENGTH PORTLAND CEMENT CONCRETE PAVEMENT 10"	SO YD	2475		2475							
42001300	PROTECTIVE COAT	SO YD	71968	39073	66721	34426	5247	5247				
* 78000100	THERMOPLASTIC PAVEMENT MARKING - LETTERS AND SYMBOLS	SO FT	2271		2271							
* 78000200	THERMOPLASTIC PAVEMENT MARKING - LINE 4"	FOOT	5271	36500	5271	36500						
* 78000400	THERMOPLASTIC PAVEMENT MARKING - LINE 6"	FOOT	342	10989	342	10989						
* 78000500	THERMOPLASTIC PAVEMENT MARKING - LINE 8"	FOOT	1097		1097							
* 78000600	THERMOPLASTIC PAVEMENT MARKING - LINE 12"	FOOT	452	3703	452	3703						
* 78000650	THERMOPLASTIC PAVEMENT MARKING - LINE 24"	FOOT	1202		1202							
* 78008200	POLYUREA PAVEMENT MARKING TYPE I - LETTERS AND SYMBOLS	SO FT	2934	714	2876	656	58	58				
* 78008210	POLYUREA PAVEMENT MARKING TYPE I - LINE 4"	FOOT	42168	11105	38949	886	3219	3219				
* 78008230	POLYUREA PAVEMENT MARKING TYPE I - LINE 6"	FOOT	14086	3439	13752	5109	334	334				
* 78008240	POLYUREA PAVEMENT MARKING TYPE I - LINE 8"	FOOT	1097		1097							
* 78008250	POLYUREA PAVEMENT MARKING TYPE I - LINE 12"	FOOT	3387	135	3319	67	68	68				
* 78008270	POLYUREA PAVEMENT MARKING TYPE I - LINE 24"	FOOT	1533	331	1518	316	15	15				
* 88600100	DETECTOR LOOP, TYPE I	FOOT	3781						3781			
* 88600700	PREFORMED DETECTOR LOOP	FOOT	4567	786					4567	786		
X4063500	PRELIMINARY TEST STRIP	EACH	2		2							

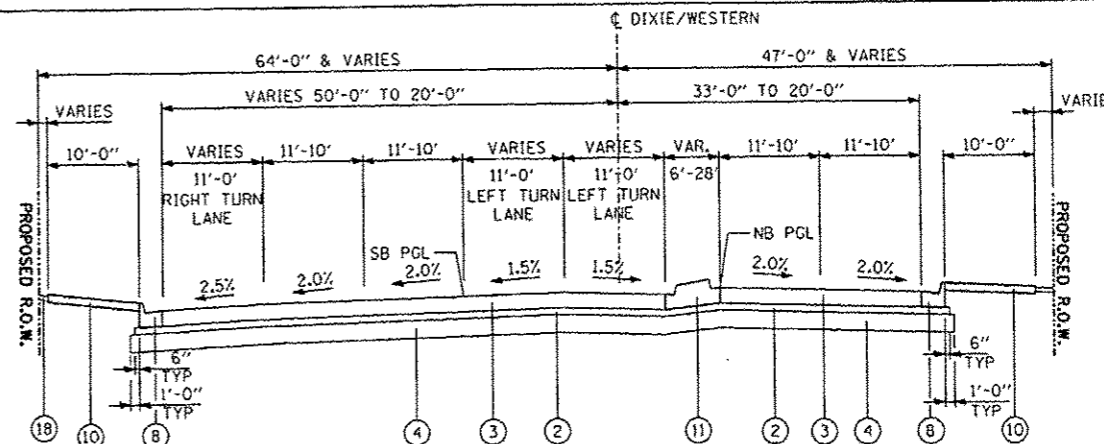
** Specialty Items*

Rev. 9-11-12

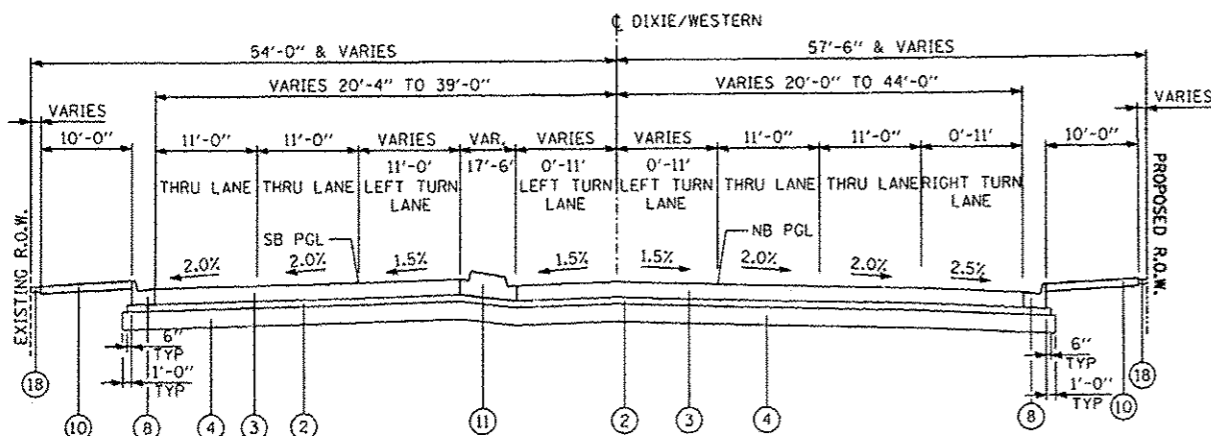


147TH STREET
DIXIE/WESTERN TO PROJECT LIMIT
STA. 1075+80.22 TO STA. 1079+99.63

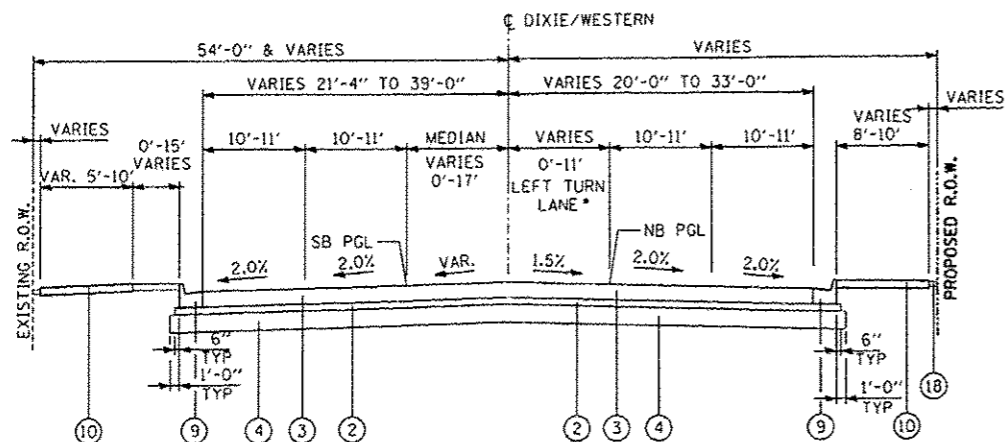
• STA. 1077+83.68 TO STA. 1079+19.56



WESTERN AVENUE
NORTH OF 147TH STREET
STA. 6012+00.00 TO STA. 6027+50.00*



DIXIE HIGHWAY
SOUTH OF 147TH STREET
STA. 6005+67.00 TO STA. 6012+00.00



• STA. 6001+99.97 TO STA. 6004+71.88

DIXIE HIGHWAY
SOUTH OF 148TH STREET
STA. 5998+11.00 TO STA. 6005+67.00

LEGEND (PCC ALTERNATE)

- ① PROPOSED PORTLAND CEMENT CONCRETE PAVEMENT 9 1/4" (JOINTED)
- ② PROPOSED STABILIZED SUBBASE- HOT-MIX ASPHALT, 4 1/2"
- ③ PROPOSED PORTLAND CEMENT CONCRETE PAVEMENT, 10" (JOINTED)
- ④ PROPOSED AGGREGATE SUBGRADE IMPROVEMENT 12"
- ⑤ PROPOSED PORTLAND CEMENT CONCRETE PAVEMENT 11" (JOINTED)
- ⑥ PROPOSED POLYMERIZED HOT-MIX ASPHALT BINDER COURSE, IL-19.0, N90
- ⑦ PROPOSED POLYMERIZED HOT-MIX ASPHALT SURFACE COURSE, MIX "F", N90
- ⑧ PROPOSED COMBINATION CONCRETE CURB AND GUTTER, TYPE B-6.24
- ⑨ PROPOSED COMBINATION CONCRETE CURB AND GUTTER, TYPE B-6.12
- ⑩ PROPOSED CONCRETE CEMENT SIDEWALK, 5"
- ⑪ PROPOSED MEDIAN (SEE PLANS)
- ⑫ PROPOSED PORTLAND CEMENT CONCRETE SHOULDERS, 11"
- ⑬ SUBBASE GRANULAR MATERIAL, TYPE C
- ⑭ AGGREGATE SHOULDERS, TYPE B
- ⑮ STEEL PLATE BEAM GUARDRAIL (SEE PROPOSED PLANS FOR LIMITS)
- ⑯ TOPSOIL (SEE LANDSCAPING PLANS)
- ⑰ PROPOSED SHOULDER RUMBLE STRIPS, 16"
- ⑱

NOTES:

1. THE MAXIMUM CROSS SLOPE FOR SIDEWALKS IS 2% PER THE BUREAU OF DESIGN & ENVIRONMENT MANUAL SECTION 58-1.06.

IDOT HOT-MIX ASPHALT MIXTURE REQUIREMENTS

ITEM	AIR VOIDS @ Ndes
RECONSTRUCTION - FULL DEPTH PAVEMENT IL RTE 83 (147TH ST), KEDZIE AVE & DIXIE HWY/WESTERN AVE	
STABILIZED SUB-BASE HOT-MIX ASPHALT, IL-19.0, 4 1/2"	3% @ 50 Gyr
HOT-MIX ASPHALT SHOULDER (GUARDRAIL STABILIZATION) HOT-MIX ASPHALT BINDER, IL 19.0, 6"	4% @ 50 Gyr
CLASS "D" PATCHES POLYMERIZED HOT-MIX ASPHALT SURFACE COURSE, MIX "F", N90 (IL-9.5mm), 2"	4% @ 90 Gyr
HOT-MIX ASPHALT BINDER COURSE, IL-19.0, N90, 12"	4% @ 90 Gyr
TEMPORARY PAVEMENT 7.5" PORTLAND CEMENT CONCRETE PAVEMENT OR HMA PAVEMENT 8"	
HMA SURFAC MIX D N70 2"	4% @ 70 Gyr
HMA BINDER COURSE 50 IL-19.0, N50, 6"	4% @ 50 Gyr
RESURFACING AT BUTT JOINTS POLYMERIZED HOT-MIX ASPHALT SURFACE COURSE, MIX "F", N90 (IL-9.5mm), 2"	4% @ 90 Gyr

THE UNIT WEIGHT USED TO CALCULATE ALL HMA SURFACE MIXTURE QUANTITIES IS 112 LB/50 YD/IN.

THE "AC TYPE" FOR POLYMERIZED HMA MIXTURES SHALL BE "SBS/SBR PG 76-22" AND FOR NON-POLYMERIZED HMA THE "AC TYPE" SHALL BE "PG 64-22" UNLESS MODIFIED BY DISTRICT ONE SPECIAL PROVISIONS.

FOR "PERCENT OF RAP" SEE DISTRICT ONE SPECIAL PROVISIONS.

OCF IS FOR SMA ONLY (SMA SFC. & SMA BINDER).

MINIMUM LIFT FOR HOT-MIX ASPHALT BINDER COURSE, IL-19.0 IS 2 1/4".

TYLIN INTERNATIONAL	USER NAME =	DESIGNED - DM	REVISED -
	PLOT SCALE =	DRAWN - DM	REVISED -
	PLOT DATE =	CHECKED - JPM	REVISED - ADDENDUM 1 9/12/12
		DATE - 5/23/2012	REVISED - 8/1/2012

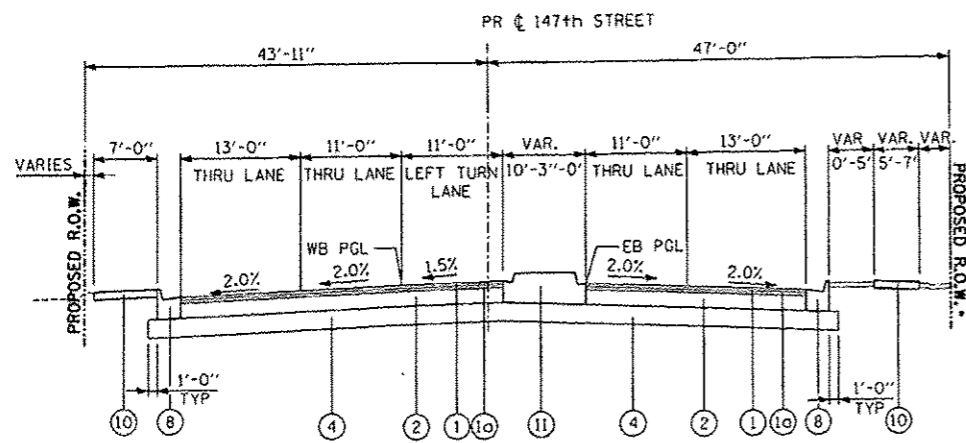
STATE OF ILLINOIS
DEPARTMENT OF TRANSPORTATION

147TH STREET PROJECT
PROPOSED TYPICAL SECTIONS (PCC ALTERNATE)

SCALE: NTS SHEET NO. 2P OF 4 SHEETS STA. TO STA.

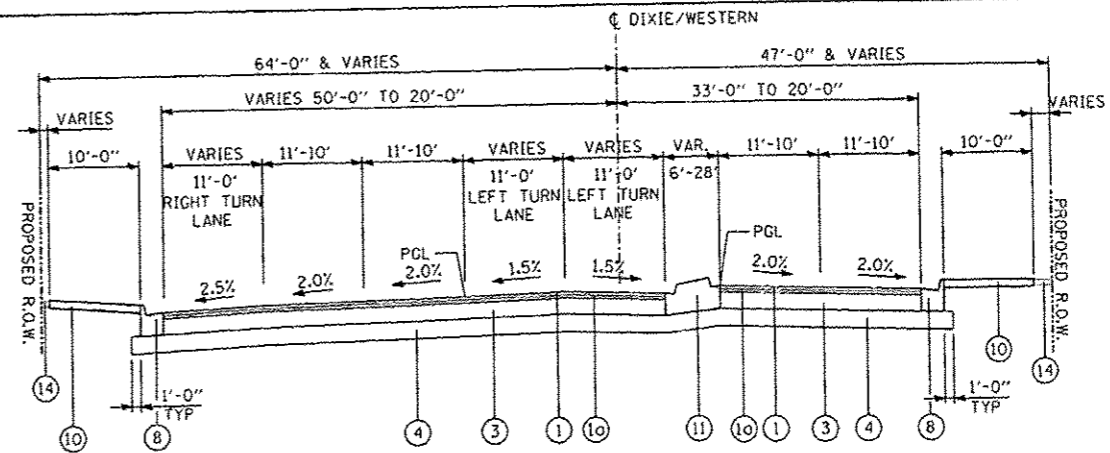
F.A.I. RTE.	SECTION	COUNTY	TOTAL SHEETS	SHEET NO.
XX	(0405-1 & 0506-2) R-1	COOK	577	30
FED. ROAD DIST. NO. ILLINOIS FED. AID PROJECT			CONTRACT NO. 60M57	

12-44-30 PM 9/12/2012

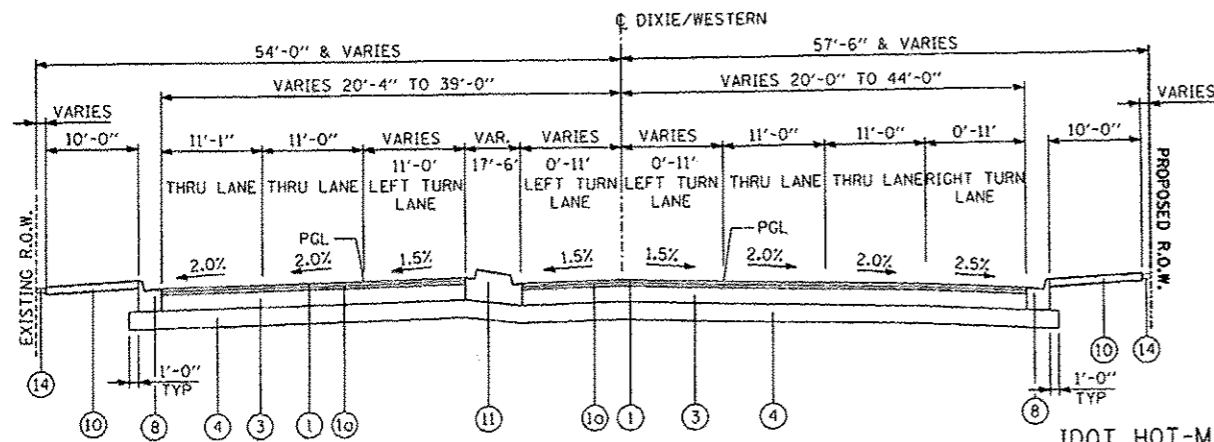


147TH STREET
DIXIE/WESTERN TO PROJECT LIMIT
STA. 1075+80.22 TO STA. 1079+99.63

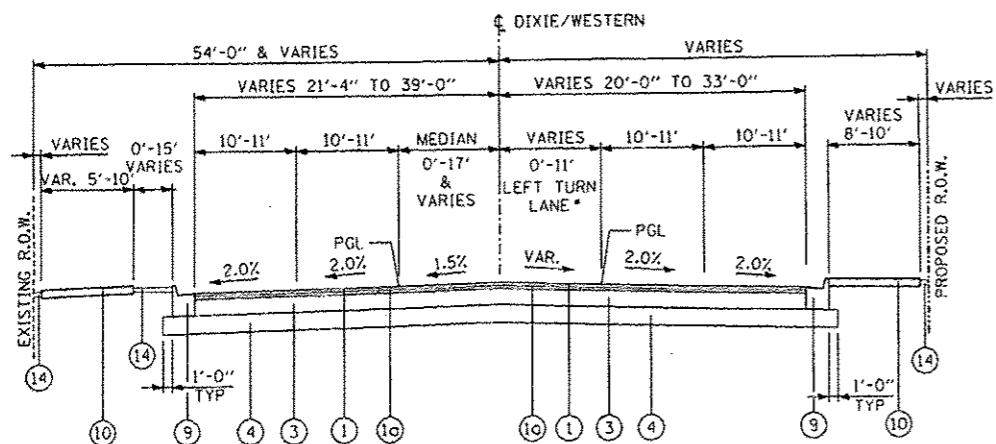
• STA. 1077+83.68 TO STA. 1079+19.56



DIXIE HIGHWAY/WESTERN AVENUE
NORTH OF 147TH STREET
STA. 6012+00.00 TO STA. 6027+50.00



DIXIE HIGHWAY/WESTERN AVENUE
SOUTH OF 147TH STREET
STA. 6005+67.00 TO STA. 6012+00.00



• STA. 6001+99.97 TO STA. 6004+71.88

DIXIE HIGHWAY/WESTERN AVENUE
SOUTH OF 148TH STREET
STA. 5998+11.00 TO STA. 6005+67.00

IDOT HOT-MIX ASPHALT MIXTURE REQUIREMENTS

ITEM	AIR VOIDS @ Ndes
RECONSTRUCTION - FULL DEPTH PAVEMENT ILLINOIS ROUTE 83 (147TH STREET)	
POLYMERIZED HOT-MIX ASPHALT SURFACE COURSE, STONE MATRIX ASPHALT, N80, *2"	3.5% @ 80 Gyr
POLYMERIZED HOT-MIX ASPHALT BINDER COURSE, STONE MATRIX ASPHALT, N80, *2"	3.5% @ 80 Gyr
HOT-MIX ASPHALT BINDER COURSE, IL-19.0, N90, 6 1/2" (PAID FOR AS HMA BASE COURSE, 5 1/2")	4% @ 90 Gyr
DIXIE HIGHWAY/WESTERN AVENUE	
POLYMERIZED HOT-MIX ASPHALT SURFACE COURSE, STONE MATRIX ASPHALT, N80, *2"	3.5% @ 80 Gyr
POLYMERIZED HOT-MIX ASPHALT BINDER COURSE, STONE MATRIX ASPHALT, N80, *2"	3.5% @ 80 Gyr
HOT-MIX ASPHALT BINDER COURSE, IL-19.0, N90, 8 1/4" (PAID FOR AS HMA BASE COURSE, 8 1/4")	4% @ 90 Gyr

THE UNIT WEIGHT USED TO CALCULATE ALL HMA SURFACE MIXTURE QUANTITIES IS 112 LB/50 YD³ IN.

THE "AC TYPE" FOR POLYMERIZED HMA MIXTURES SHALL BE "SBS/SBR PG 76-22" AND FOR NON-POLYMERIZED HMA THE "AC TYPE" SHALL BE "PG 64-22" UNLESS MODIFIED BY DISTRICT ONE SPECIAL PROVISIONS.

FOR "PERCENT OF RAP" SEE DISTRICT ONE SPECIAL PROVISIONS.

• QCP IS FOR SMA ONLY (SMA SFC. & SMA BINDER).

MINIMUM LIFT FOR HOT-MIX ASPHALT BINDER COURSE, IL-19.0 IS 2 1/4".

IDOT HOT-MIX ASPHALT MIXTURE REQUIREMENTS (CONT.)

ITEM	AIR VOIDS @ Ndes
HOT-MIX ASPHALT SHOULDERS, IL-19.0, 6" (GUARDRAIL STABILIZATION)	4% @ 70 Gyr
CLASS "D" PATCHES	
POLYMERIZED HOT-MIX ASPHALT SURFACE COURSE, MIX "F", N90 (IL-9.5mm), 2"	4% @ 90 Gyr
HOT-MIX ASPHALT BINDER COURSE, IL-19.0, N90, 12"	4% @ 90 Gyr
TEMPORARY PAVEMENT	
7.5" PORTLAND CEMENT CONCRETE PAVEMENT OR HMA PAVEMENT 8" 1	
HMA SURFACE MIX D N70, 2" 1	4% @ 70 Gyr
HMA BINDER COURSE 50 IL-19.0, N50, 6" 1	4% @ 50 Gyr

NOTE:

1. THE MAXIMUM CROSS SLOPE FOR SIDEWALKS IS 2% PER THE BUREAU OF DESIGN & ENVIRONMENT MANUAL SECTION 58-1.06.

LEGEND (HMA ALTERNATE)

- 1** PROPOSED POLYMERIZED HOT-MIX ASPHALT SURFACE COURSE, STONE MATRIX ASPHALT, N80, 2"
- 10** PROPOSED POLYMERIZED HOT-MIX ASPHALT BINDER COURSE, STONE MATRIX ASPHALT, N80, 2"
- 2** PROPOSED HOT-MIX ASPHALT BINDER COURSE, IL-19.0, N90 6 1/2"
- 3** PROPOSED HOT-MIX ASPHALT BINDER COURSE, IL-19.0, N90 8 1/4"
- 4** PROPOSED AGGREGATE SUBGRADE IMPROVEMENT 12"
- 5** PROPOSED PORTLAND CEMENT CONCRETE PAVEMENT 11" (JOINTED)
- 6** PROPOSED POLYMERIZED HOT-MIX ASPHALT BINDER COURSE, IL-19.0, N90
- 7** PROPOSED POLYMERIZED HOT-MIX ASPHALT SURFACE COURSE, MIX "F", N90
- 8** PROPOSED COMBINATION CONCRETE CURB AND GUTTER, TYPE B-6.24
- 9** PROPOSED COMBINATION CONCRETE CURB AND GUTTER, TYPE B-6.12
- 10** PROPOSED CONCRETE CEMENT SIDEWALK, 5"
- 11** PROPOSED MEDIAN (SEE PLANS)
- 12** PROPOSED STABILIZED SUBBASE- HOT-MIX ASPHALT, 4 1/2"
- 13** PROPOSED SHOULDER RUMBLE STRIPS, 16"
- 14** TOPSOIL (SEE PLANS)

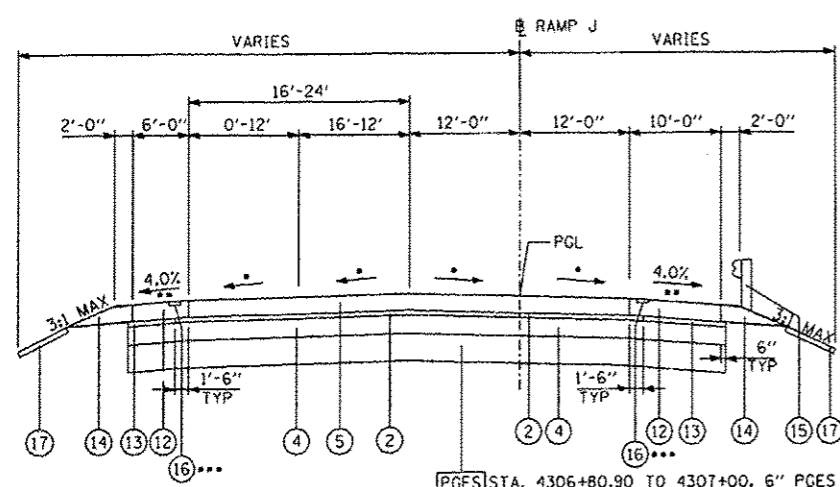
TYLIN INTERNATIONAL	USER NAME :	DESIGNED - DM	REVISED -
	PLOT SCALE :	DRAWN - DM	REVISED -
	PLOT DATE :	CHECKED - JPM	REVISED 1 - ADDENDUM 1 9/06/2012
		DATE - 5/23/2012	REVISED - 8/1/2012

STATE OF ILLINOIS
DEPARTMENT OF TRANSPORTATION

147TH STREET PROJECT
PROPOSED TYPICAL SECTIONS (HMA ALTERNATE)

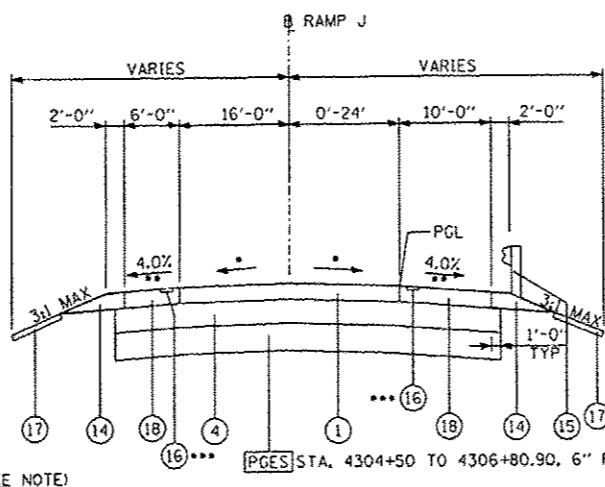
SCALE: NTS SHEET NO. 2H OF 4 SHEETS STA. TO STA.

F.A.I. RITE:	SECTION	COUNTY	TOTAL SHEETS	SHEET NO.
XX	(0405-1 & 0506-2) R-1	COOK	577	32
FED. ROAD DIST. NO. ILLINOIS FED. AID PROJECT			CONTRACT NO. 60M57	



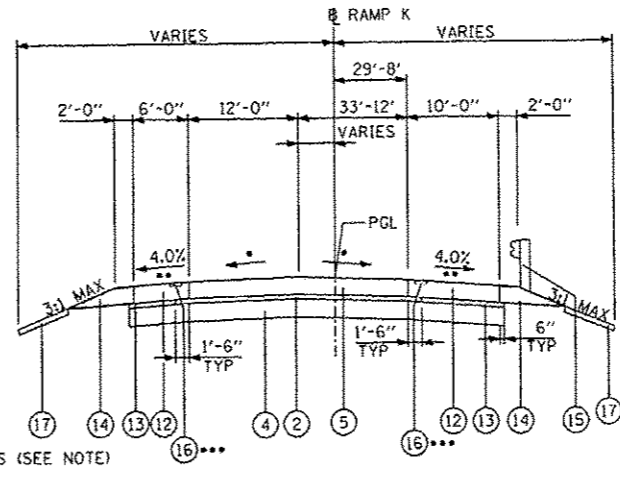
RAMP J
PGES STA. 4306+80.90 TO 4307+00, 6" PGES (SEE NOTE)

- REFER TO PROPOSED PLAN FOR PAVEMENT CROSS SLOPES
- 4% AND VARIES PER IDOT STD. 483001
- STA. 4306+81.19 TO STA. 4311+22.00 (SEE PLANS)



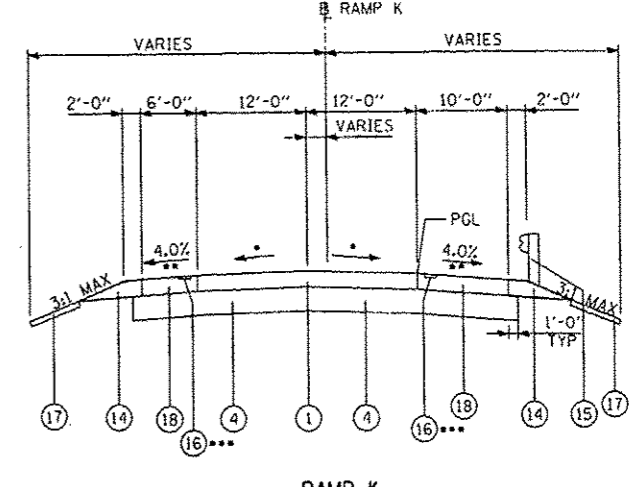
RAMP J
PGES STA. 4304+50 TO 4306+80.90, 6" PGES (SEE NOTE)

- REFER TO PROPOSED PLAN FOR PAVEMENT CROSS SLOPES
- 4% AND VARIES PER IDOT STD. 483001
- STA. 4304+31.00 TO STA. 4306+81.19 (SEE PLANS)



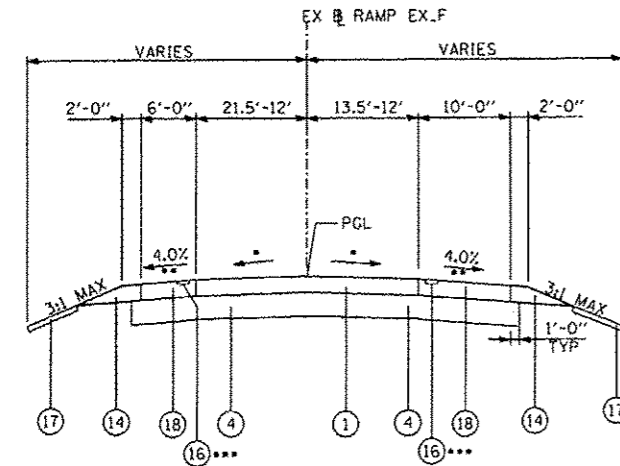
RAMP K
STA. 4401+18.60 TO STA. 4404+22.45

- REFER TO PROPOSED PLAN FOR PAVEMENT CROSS SLOPES
- 4% AND VARIES PER IDOT STD. 483001
- STA. 4401+22.00 TO STA. 4404+22.45 (SEE PLANS)



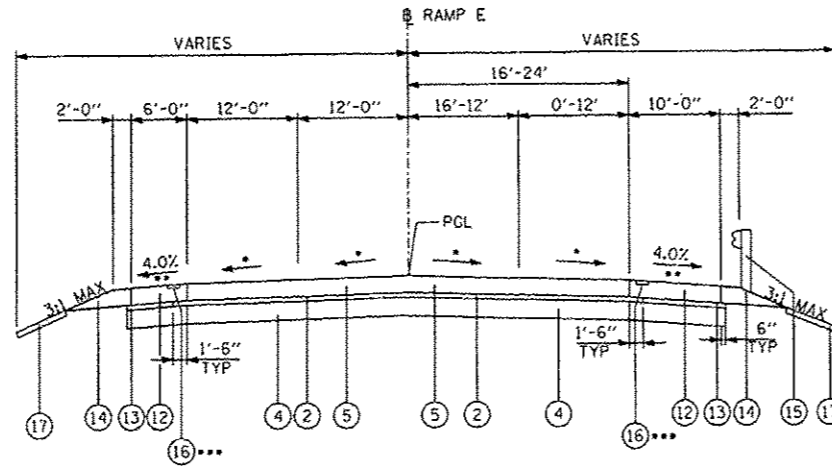
RAMP K
STA. 4404+22.45 TO STA. 4407+36.54

- REFER TO PROPOSED PLAN FOR PAVEMENT CROSS SLOPES
- 4% AND VARIES PER IDOT STD. 483001
- STA. 4404+22.45 TO STA. 4407+36.00



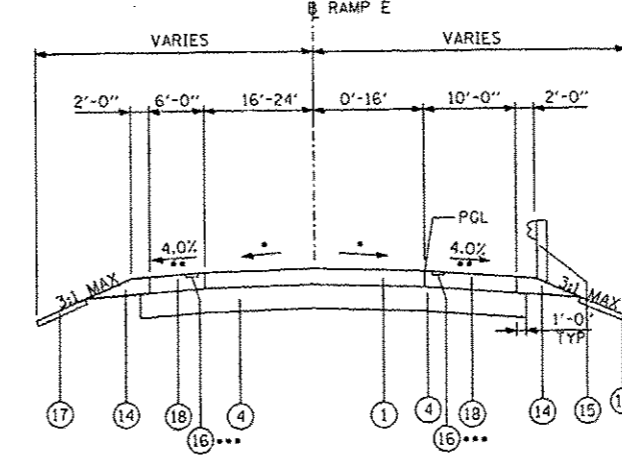
RAMP EX.F
STA. 5201+53.87 TO STA. 5202+98.21

- REFER TO PROPOSED PLAN FOR PAVEMENT CROSS SLOPES
- 4% AND VARIES PER IDOT STD. 483001
- STA. 5201+50.00 TO STA. 5202+98.00 (SEE PLANS)



RAMP E
STA. 4110+38.73 TO STA. 4115+36.4

- REFER TO PROPOSED PLAN FOR PAVEMENT CROSS SLOPES
- 4% AND VARIES PER IDOT STD. 483001
- STA. 4110+39.09 TO STA. 4114+75.83 (SEE PLANS)



RAMP E
STA. 4107+88.03 TO STA. 4110+38.73

- REFER TO PROPOSED PLAN FOR PAVEMENT CROSS SLOPES
- 4% AND VARIES PER IDOT STD. 483001
- STA. 4108+68.00 TO STA. 4110+39.09 (SEE PLANS)

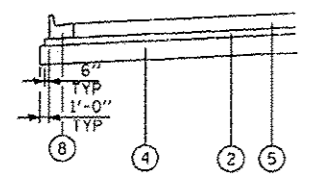
LEGEND

- PROPOSED PORTLAND CEMENT CONCRETE PAVEMENT 9" (JOINTED)
- PROPOSED STABILIZED SUBBASE- HOT-MIX ASPHALT, 4 1/2"
- PROPOSED PORTLAND CEMENT CONCRETE PAVEMENT, 10" (JOINTED)
- AGGREGATE SUBGRADE IMPROVEMENT 12"
- PROPOSED PORTLAND CEMENT CONCRETE PAVEMENT 11" (JOINTED)
- PROPOSED POLYMERIZED HOT-MIX ASPHALT BINDER COURSE, IL-19.0, N90
- PROPOSED POLYMERIZED HOT-MIX ASPHALT SURFACE COURSE, MIX "F", N90
- PROPOSED COMBINATION CONCRETE CURB AND GUTTER, TYPE B-6.24
- PROPOSED COMBINATION CONCRETE CURB AND GUTTER, TYPE B-6.12
- PROPOSED CONCRETE CEMENT SIDEWALK, 5"
- PROPOSED MEDIAN (SEE PLANS)
- PROPOSED PORTLAND CEMENT CONCRETE SHOULDERS, 11"
- SUBBASE GRANULAR MATERIAL, TYPE C
- AGGREGATE SHOULDERS, TYPE B
- STEEL PLATE BEAM GUARDRAIL (SEE PROPOSED PLANS FOR LIMITS)
- PROPOSED SHOULDER RUMBLE STRIPS, 16"
- TOPSOIL (SEE LANDSCAPING PLANS)
- PROPOSED PORTLAND CEMENT CONCRETE SHOULDERS, 9"

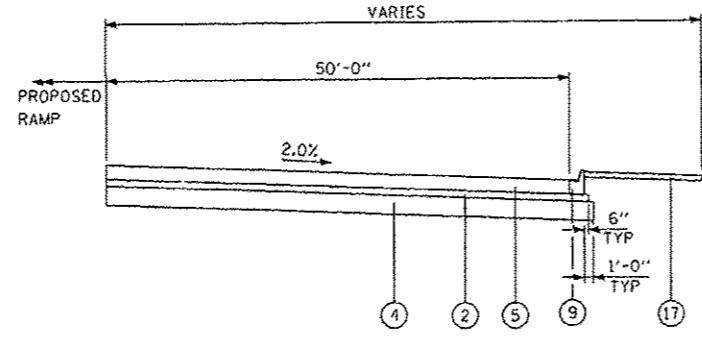
PGES SEE NOTE 2 ON TYPICAL SECTIONS SHEET 4 OF 4

NOTES:

1. RAMP J PGES PROVISION LIMITS: STA. 4304+50 TO 4307+00, 6" PGES.



CCC&G RAMP SECTION
RAMP E, RAMP J, AND RAMP K
SEE PLANS FOR LOCATION



ACCIDENT INVESTIGATION SITE
RAMP E AND RAMP J

RAMP E: STA. 4110+58.39 TO STA. 4113+01.03
RAMP J: STA. 4306+96.70 TO STA. 4309+65.54

IDOT HOT-MIX ASPHALT MIXTURE REQUIREMENTS

ITEM	AIR VOIDS % Ndes
RAMP RECONSTRUCTION	
STABILIZED SUB-BASE HOT-MIX ASPHALT, IL-19.0, 4 1/2"	3%#50 Gyr
RAMP RESURFACING	
POLYMERIZED HOT-MIX ASPHALT SURFACE COURSE, MIX "F", N90 (IL-9.5mm), 2"	4%#90 Gyr

THE UNIT WEIGHT USED TO CALCULATE ALL HMA SURFACE MIXTURE QUANTITIES IS 112 LB/50 YD/IN.

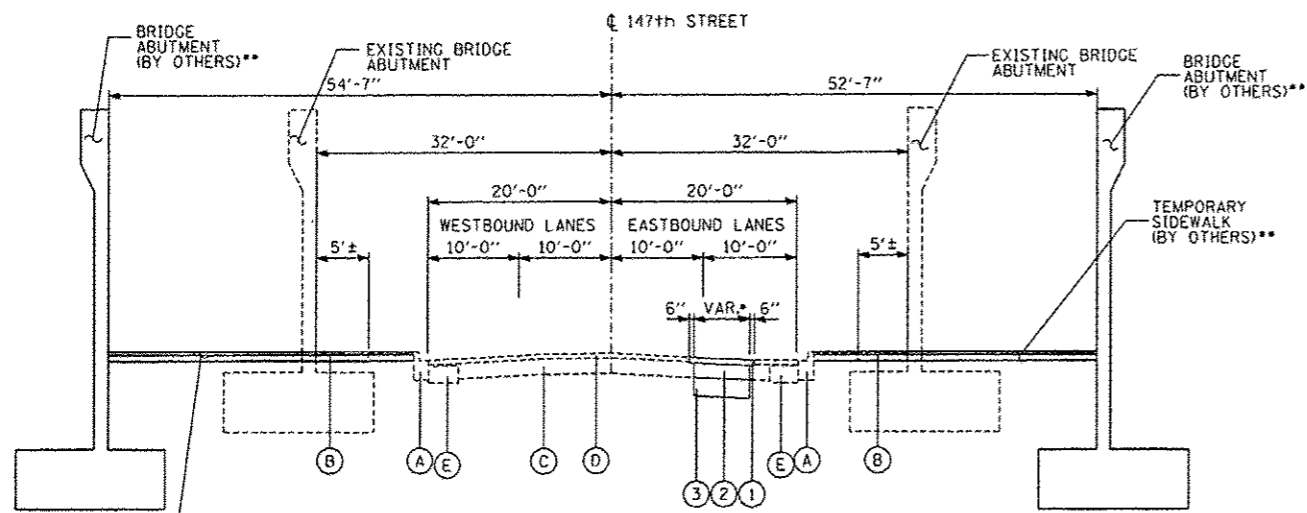
THE "AC TYPE" FOR POLYMERIZED HMA MIXTURES SHALL BE "SBS/SBR PG 76-22" AND FOR NON-POLYMERIZED HMA THE "AC TYPE" SHALL BE "PG 64-22" UNLESS MODIFIED BY DISTRICT ONE SPECIAL PROVISIONS.

FOR "PERCENT OF RAP" SEE DISTRICT ONE SPECIAL PROVISIONS.

QCP IS FOR SMA ONLY (SMA SFC. & SMA BINDER).

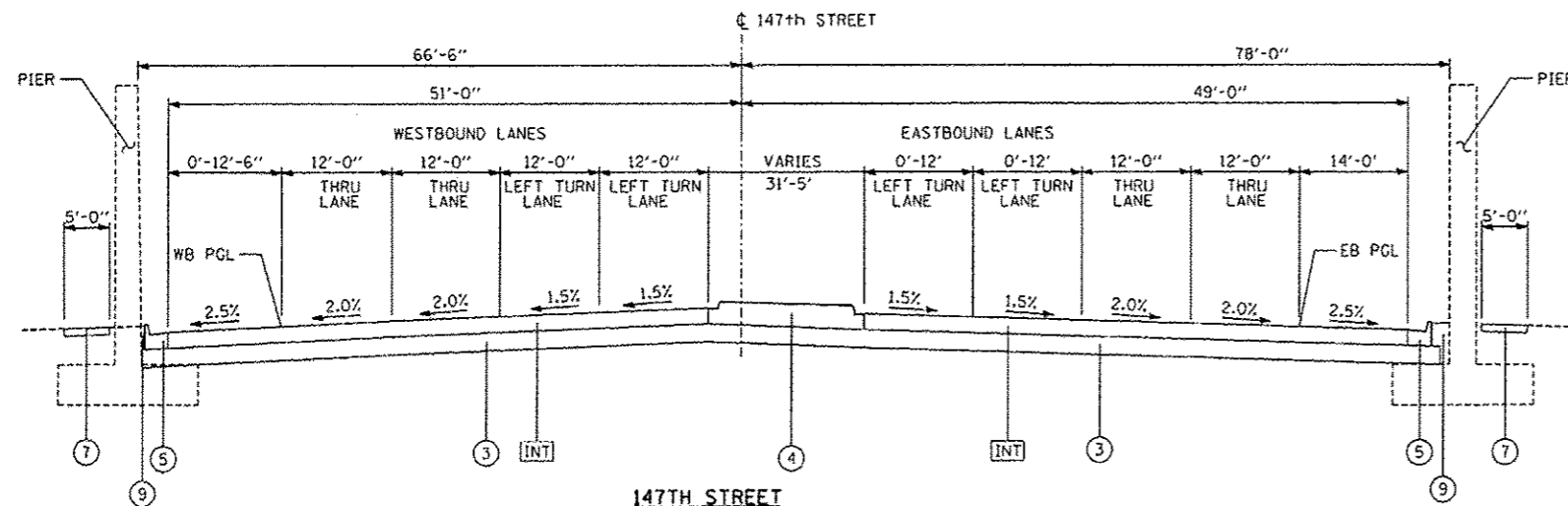
TYLINTERNATIONAL	USER NAME	DESIGNED - DM	REVISED -	STATE OF ILLINOIS DEPARTMENT OF TRANSPORTATION	147TH STREET PROJECT		F.A.I. RTE.	SECTION	COUNTY	TOTAL SHEETS	SHEET NO.
	PLT SCALC	DRAWN - DM	REVISED -		PROPOSED TYPICAL SECTIONS (RAMPS - PCC & HMA ALTERNATES)	XX	(0405-1 & 0506-2) R-1	COOK	577	33	
	PLT DATE	CHECKED - JPM	REVISED - ADDENDUM 1 9/12/2012		SCALE: NTS	SHEET NO. 3 OF 4 SHEETS	STA.	TO STA.	CONTRACT NO. 60M57		
		DATE - 5/23/2012	REVISED - 8/1/2012						FED. ROAD DIST. NO. ILLINOIS FED. AID PROJECT		

12-44-31 PI



• FROM STA. 1020+06.97 TO STA. 1020+60.00, 6' WIDE.
 FROM STA. 1020+60.00 TO STA. 1022+90.00, 6'-7" WIDE.
 FROM STA. 1022+90.00 TO STA. 1027+00.00, 8'-8" WIDE.
 SEE PLANS FOR EXACT LOCATION AND LIMITS OF PAVEMENT REPLACEMENT.
 CLASS "D" PAVEMENT PATCHES, THICKNESS 14".
 ** ABUTMENT AND PROPOSED TEMPORARY SIDEWALK TO BE CONSTRUCTED BY ISTHA (TOLLWAY) CONTRACT I-12-4035.

**147TH STREET
 UNDER I-294 BRIDGE
 STA. 1019+55.11 TO STA. 1030+25.10**



**147TH STREET
 AT I-57 BRIDGE
 STA. 1056+13± TO STA. 1062+59±**

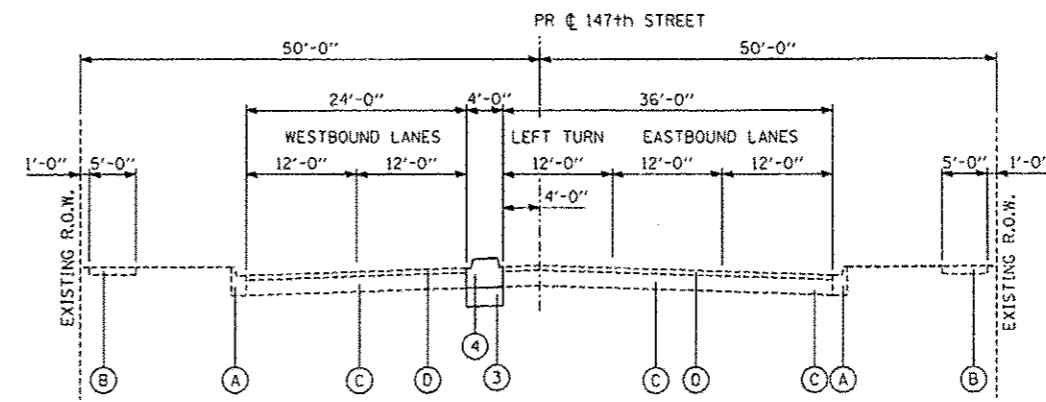
IDOT HOT-MIX ASPHALT MIXTURE REQUIREMENTS

ITEM	AIR VOIDS % Ndes
RECONSTRUCTION - FULL DEPTH PAVEMENT	
ILLINOIS ROUTE 83 (147TH STREET) INTERIM PAVEMENT (ARTERIAL)	
POLYMERIZED HOT-MIX ASPHALT SURFACE COURSE, MIX "F", N90, 2"	4%±90 Gyr
POLYMERIZED HOT-MIX ASPHALT BINDER COURSE, IL-19.0, N90 2 1/4"	4%±90 Gyr
HOT-MIX ASPHALT BINDER COURSE, IL-19.0, N90, 5 3/4"	4%±90 Gyr

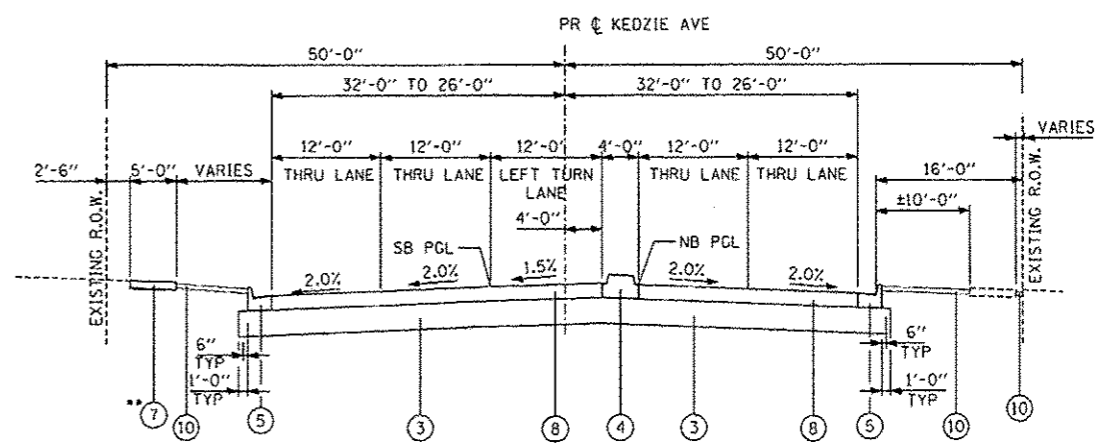
THE UNIT WEIGHT USED TO CALCULATE ALL HMA SURFACE MIXTURE QUANTITIES IS 112 LB/SO YD/IN.
 THE "AC TYPE" FOR POLYMERIZED HMA MIXTURES SHALL BE "SBS/SBR PG 76-22" AND FOR NON-POLYMERIZED HMA THE "AC TYPE" SHALL BE "PG 64-22" UNLESS MODIFIED BY DISTRICT ONE SPECIAL PROVISIONS.
 FOR "PERCENT OF RAP" SEE DISTRICT ONE SPECIAL PROVISIONS.
 OCP IS FOR SMA ONLY (SMA SFC. & SMA BINDER).
 MINIMUM LIFT FOR HOT-MIX ASPHALT BINDER COURSE, IL-19.0 IS 2 1/4".

147TH STREET (IL-83) INTERIM PAVEMENT (ARTERIAL) ALTERNATES

HOT-MIX ASPHALT PAVEMENT ALTERNATE	PCC PAVEMENT ALTERNATE
PAID FOR AS HMA PAVEMENT (FULL DEPTH) 10"	8 3/4" PORTLAND CEMENT CONCRETE (JOINTED)
- 2" HOT-MIX ASPHALT SURFACE COURSE, MIX "F", N90	- 4 1/2" STABILIZED SUBBASE - HOT-MIX ASPHALT
- 2 1/4" HOT-MIX ASPHALT BINDER COURSE, IL-19.0, N90	- AGGREGATE SUBGRADE IMPROVEMENT 12"
- 5 3/4" HOT-MIX ASPHALT BINDER COURSE, IL-19.0, N90	
- AGGREGATE SUBGRADE IMPROVEMENT 12"	



**147TH STREET
 PROJECT LIMIT TO KEDZIE AVE
 STA. 1004+21.14 TO STA. 1005+73.65**



**KEDZIE AVENUE
 147TH STREET TO PROJECT LIMIT
 STA. 5013+00.00 TO STA. 5020+75.00**

** SEE PLANS FOR LOCATIONS

LEGEND

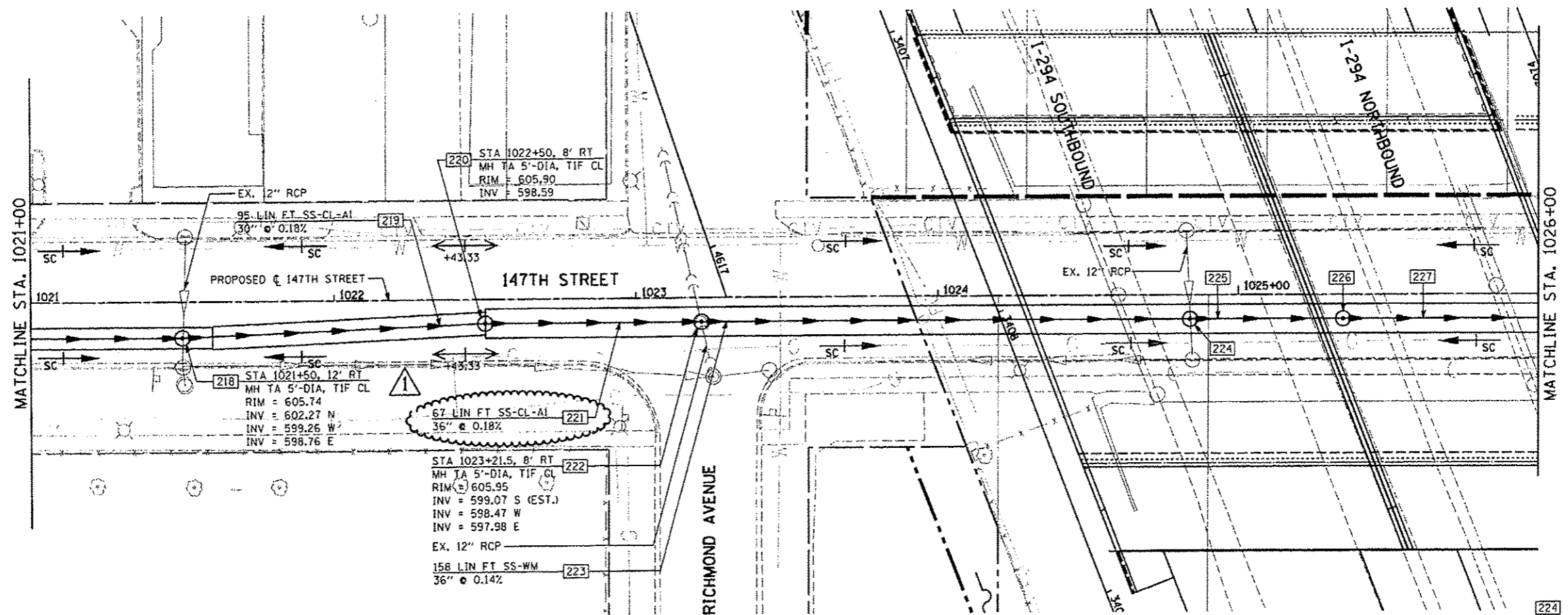
- (A) EXISTING CONCRETE CURB AND GUTTER
- (B) EXISTING P.C. CONCRETE SIDEWALK, 5"
- (C) EXISTING P.C. CONCRETE PAVEMENT, 10±
- (D) EXISTING HOT-MIX ASPHALT, VARIES 3" TO 6"±
- (E) EXISTING BITUMINOUS BASE COURSE, 11"±
- (F) PROPOSED POLYMERIZED HOT-MIX ASPHALT SURFACE COURSE, MIX "F", N90, 2"
- (G) PROPOSED HOT-MIX ASPHALT BINDER COURSE, IL-19.0, N90, 12"
- (H) AGGREGATE SUBGRADE IMPROVEMENT 12"
- (I) PROPOSED MEDIAN (SEE PLANS)
- (J) PROPOSED COMBINATION CONCRETE CURB AND GUTTER, TYPE B-6.24
- (K) PROPOSED COMBINATION CONCRETE CURB AND GUTTER, TYPE B-6.12
- (L) PROPOSED P.C. CONCRETE SIDEWALK, 5"
- (M) PROPOSED P.C. CONCRETE PAVEMENT 10" (JOINTED)
- (N) TOPSOIL (SEE LANDSCAPING PLANS)
- (INT) SEE TABLE AND MIX CHART ON LEFT
- (PGES) SEE NOTE 2 ON TYPICAL SECTION SHEET 4 OF 4

NOTE:

1. THE MAXIMUM CROSS SLOPE FOR SIDEWALKS IS 2% PER THE BUREAU OF DESIGN & ENVIRONMENT MANUAL SECTION 58-1.06.
2. POROUS GRANULAR EMBANKMENT, SUBGRADE (PGES) HAS BEEN PROVIDED FOR USE AT THE LOCATIONS INDICATED FOR SOILS THAT TEND TO BE UNSUITABLE OR UNSTABLE. THE ACTUAL NEED FOR REMOVAL AND REPLACEMENT WITH PGES WILL BE DETERMINED IN THE FIELD AT THE TIME OF CONSTRUCTION BY THE GEOTECHNICAL ENGINEER. ALL POTENTIALLY UNSTABLE SOILS SHOULD BE TESTED WITH STATIC CONE PENETROMETER AND TREATED IN ACCORDANCE WITH ARTICLE 301.04 AND THE IDOT STABILITY MANUAL. IF UNSTABLE AND/OR UNSUITABLE MATERIAL IS NOT ENCOUNTERED, THEN THE QUANTITY SHALL BE DEDUCTED AND NO ADDITIONAL COMPENSATION WILL BE DUE TO THE CONTRACTOR.

TYLIN INTERNATIONAL	USER NAME: []	DESIGNED: DM	REVISED: []	STATE OF ILLINOIS DEPARTMENT OF TRANSPORTATION	147TH STREET PROJECT PROPOSED TYPICAL SECTIONS (PCC & HMA ALTERNATES)		F.A.I. RTE.:	SECTION:	COUNTY:	TOTAL SHEETS:	SHEET NO.:
	PLLOT SCALE: []	DRAWN: DM	REVISED: []		XX	10405-1 & 0506-21 R-1	COOK	577	34		
	PLLOT DATE: []	CHECKED: JPM	REVISED: []		ADDENDUM 1	9/12/2012	CONTRACT NO. 60M57		FED. ROAD DIST. NO. ILLINOIS FED. AID PROJECT		
		DATE: 5/23/2012	REVISED: []		8/1/2012	SCALE: NTS	SHEET NO. 4 OF 4 SHEETS	STA. TO STA.			

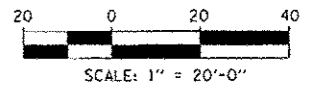
P:\602540(57-294)\road\p10.147th\PI10.TYP.PR_SHT04.dgn
 12-44-12 PM



09/12/2012

LEGEND

- EXISTING RIGHT-OF-WAY
- - - PROPOSED RIGHT-OF-WAY
- ||||| PROPOSED TEMPORARY EASEMENT



- 224 STA 1024+84, 8' RT
MH TA 5'-DIA, TIF CL
RIM = 605.90
INV = 602.84 N
INV = 597.76 W,E
- 225 46 LIN FT SS-CL-AI
36" @ 0.14%
- 226 STA 1025+35, 8' RT
MH TA 5'-DIA, TIF CL
RIM = 605.89
INV = 600.14 N,S (15")
INV = 597.70 W
INV = 595.55 E
- 227 160 LIN FT SS-CL-AI
36" @ 0.14%

	USER NAME *	DESIGNED - JRS	REVISED - JRS 12/01/2011	STATE OF ILLINOIS DEPARTMENT OF TRANSPORTATION	147TH STREET PROJECT PROPOSED DRAINAGE AND UTILITY PLAN - 147TH STREET		F.A.I. RTE.	SECTION	COUNTY	TOTAL SHEET NO.
	PLOT SCALE *	DRAWN - MJF	REVISED - JRS 02/15/2012		57	(0405-1 & 0506-2) R-1	COOK	577	224	
	PLOT DATE *	CHECKED - APS	REVISED - JRS 05/04/2012		SCALE: 1"=20'		SHEET NO. 4 OF 23 SHEETS	STA. 1021+00 TO STA. 1026+00	CONTRACT NO. 60M57	
		DATE - 7/22/2011	REVISED -						ILLINOIS FED. AID PROJECT	

PI0_DRPP_SHT04_HRGREEN.dgn