



PIPE TOOLS & VISES  
SINCE 1896

[www.reedmfgco.com](http://www.reedmfgco.com)



**CUTTERS & CUTTER WHEELS / LARGE DIAMETER PIPE TOOLS / PLASTIC PIPE TOOLS / WATER SERVICES TOOLS & MACHINES / GROOVERS, POWER DRIVES, THREADERS & DIES / VISES / WRENCHES / GENERAL PIPE WORKING TOOLS**

**THE PROFESSIONAL'S  
FIRST CHOICE**

Quality. Service. Performance.



# ✓ WHY REED?

## BENEFITS FOR REED CUSTOMERS & COMMUNITY

PIPE TOOLS & VISES  
SINCE 1896



(L-R) Scott Wright (5th generation), Ralph Wright (4th - Chairman Emeritus - deceased), and Mark Wright (5th)



Reed Manufacturing has been producing fine tools for worldwide professional trades since its founding, in 1896, by Carl Reed. The company was purchased in 1902 by Reuben Wright with money he made selling water and hardware during the 1849 California Gold Rush, followed by successful timber businesses in Wisconsin, Michigan, and Western Pennsylvania. The company continues to be operated by his descendants: fifth generation members of the Wright family. Mark Wright and Scott Wright serve as President, Manufacturing & Product Development and President, Sales & Finance, respectively. At Reed in several roles for more than 28 years each, Mark and Scott uphold the family traditions of product innovation, highest quality pipe tools, great customer service, a cutting edge factory and extra value to customers.

Five generations of Wrights have also provided a great place to work and exceptional contributions to the community. Reed Manufacturing is a big supporter of the Erie County United Way (\$3,235 per capita for 2017), the Second Harvest Food Bank along with WQLN Public Television, among others. Additionally, Reed Associates are encouraged to give back to the community through gifts of money and service.



### REED ASSOCIATES



L to R - Debbie Sulecki, Jeff Esmont, Pat Reinke



L to R - Mike Pruzinsky, Bill Stevens, Hector Angel Andrade, Todd Gilpatrick, Tom Fess, Steve Angermeier, Marnie Caldwell



L to R - Minnie Franz, Joyce Carr, Julie Machinski, Tim Donohue, Gene Lachman, Brian Gunderson, Gou-Dong "Jason" Cao, Carrie Applequist, Wan-Xin Werstler, Yousef Hamdan



Hartmut Lutz



Matt Harvey



Chris Reger

The secret of Reed's continuing, increasing success can be attributed to its corporate culture of excellence and the quality of its Associates, who are individually committed to exceptional performance and service. Reed engineers developed many of the most innovative and effective tools in the industry – such as the Quick Release™ Tubing Cutter, the Hinged Cutter™, the Rotary™ Cutter and the Universal Pipe Cutter. Many of these tools have been copied by others, but through continuous improvements and everyday dedication to quality workmanship, Reed products remain the finest in the world.

The goals of each Reed Associate are to ship 95% of orders within three business days, to provide immediate, informed responses to customer inquiries and to produce 100% error-free work. Reed works diligently to cultivate relationships with dependable distributors to reach the end-user market. Selling through traditional, local distributors is the best avenue to strengthen ties with Reed tool users. The strong links in the customer service chain – from product development and manufacturing, through order processing and inquiry fulfillment, to distribution – make Reed a leader in customer satisfaction. Reed identifies the best people to provide the best quality tools which results in the best service available.





PIPE TOOLS & VISES  
SINCE 1896



**Cutters & Cutter Wheels**

Deburring Tool - Inner / Outer..... 2a

**Plastic Pipe Tools**

DEB1 Series Deburring Tools - Drill-Powered .... 2a

Clean Ream Extreme™  
Toilet Closet Flange Reamer ..... 3a

Clean Ream Plus™  
Plastic Pipe Fitting Reamers..... 3a

Ratchet Shears..... 3a

Cone Chamfer Tool ..... 4a

Cordless Power Pipe Beveler..... 4a

**Water Services Tools & Machines**

Tapping Compound..... 5a

Pivot Head Valve & Curb Keys..... 5a

Corporation Stop Key Sockets..... 6a

Valve Operators ..... 6a

**Vises**

Mid-Line Vise..... 7a

**Wrenches**

Aluminum Strap Wrenches ..... 7a

2017

**NEW TOOLS**

Quality. Service. Performance.

www.reedmfgco.com

# CUTTERS & CUTTER WHEELS

## DEBURRING TOOL INNER / OUTER



### FEATURES

- Deburr inner and outer diameters with one tool.
- Knurled hand grip keeps tool secure in operator's hand.
- Used for water service lines, copper pipe installations, plumbing lines, radiant heating and gas lines.

Reed's Inner/Outer Deburring Tool, **DEB200**, deburrs and reams both the inner and outer diameters using one tool. This double-ended deburring tool works for copper, aluminum, steel and stainless tubing. Multiple cutting edges on the inside of either end provide smooth deburring operation. Knurled rings on the surface allow operator a firm grip during use. The tool is used for copper pipe installation, plus with metal pipe found in water service lines, plumbing lines, radiant heating and gas lines.

CATALOG NO.	ITEM CODE	CAPACITY		APPLICATION	WEIGHT	
		in	mm		lbs	kg
DEB200	04431	3/8" - 2 CTS I.D./O.D. 3/8" - 1 1/2 IPS I.D./O.D.	10 - 54 I.D./O.D.	Copper, Aluminum, Steel, Stainless Steel	1.1	0.5

**+ MORE Metal Deburring Tools on P. 13 of Reed's catalog.**

# PLASTIC PIPE TOOLS

## DEB1 SERIES DEBURRING TOOLS DRILL-POWERED



### FEATURES

- Integrated shaft for drill power operation.
- Knurled grip for slip-resistance and durable aluminum body for longevity.
- Deburr and chamfer in the same rotation.
- Three sizes of pipe accommodated per tool.

Reed's popular DEB1 Series deburring tools are offered with an integral shaft to allow the operator to use with a drill. Make short work of deburring jobs, especially when working on multiple lengths of pipe. Patented DEB1 tools deburr and chamfer to pipe manufacturers' recommendations in seconds. Plastic pipe joints get proper fit from smooth, chamfered ends delivered by DEB1 models. Use for PVC, CPVC, ABS, PE and PP pipe. Find three sizes in one tool. All DEB1 models have internal pipe guides, knurled grip for slip-resistance and a sharpenable and/or replaceable blade.

CATALOG NO.	ITEM CODE	NOMINAL PIPE CAPACITY	APPLICATION	PIPE/TUBING	WEIGHT	
					lbs	kg
PDEB1IPS	04651	1/2", 3/4", 1" O.D.	PVC, CPVC, PE, ABS, PP	IPS	0.6	0.3
PDEB1-2IPS	04657	1/4", 1/2", 2" O.D.	PVC, CPVC, PE, ABS, PP	IPS	1.0	0.4

**+ MORE Plastic Pipe Deburring Tools on P. 29 of Reed's catalog.**



videos.reedmfgo.com/deburring



PIPE TOOLS & VISES  
SINCE 1896

## CLEAN REAM EXTREME™ TOILET CLOSET FLANGE REAMER

### FEATURES

- Removes toilet flange from inside 4" Schedule 40 PVC pipe.
- Eliminate the hassle and labor time of sawing and chiseling out the old closet flange.
- Fits into standard ½" drills.

Reed's Toilet Closet Flange Reamer removes the toilet flange and saves the sewer pipe for reuse. Clean out the old, damaged closet flange, install a new one and complete the project in minutes. Engineered to fit 4" internal flange, the toilet closet flange reamer saves time and material costs for the plumbing project. Built to the same standards as Reed's other Clean Ream Extreme™ reamers, this new application meets the specific clean-out need for internal flange to sewer drain connection.

CATALOG NO.	ITEM CODE	DESCRIPTION	SHAFT SIZE	WEIGHT	
				lbs	kg
TFR400	04564	Removes 4" Internal Toilet Closet Flange on 4" Sch. 40 PVC	¾" Hex	1.4	0.6



TFR400

## CLEAN REAM PLUS™ PLASTIC PIPE FITTING REAMERS

### FEATURES

- Reliable Clean Ream Plus is engineered for 250 or more reams - far more than the competition.
- Mid-priced model gives exceptional service which means less downtime.
- Save time and materials by eliminating the need to replace entire sections of pipe.
- Designed to ream-out Schedule 40 PVC, CPVC & ABS fittings.
- Heat-treated for long life, the cutting disc may be sharpened and/or replaced.

Clean Ream Plus™ Plastic Pipe Fitting Reamers are inserted into a drill (not provided) to clean out the old or broken pipe and leftover solvent cement from a fitting so the fitting can be reused. Reed's Clean Ream Plus line offers durable, price competitive tools. These are used for reaming drain and waste piping, vent intake, as well as plumbing fittings. Units feature a red, anodized aluminum guide and black cutting disc. The disc is heat-treated for long life and is sharpenable and/or replaceable.

NOTE: Not recommended for pressurized systems.

CATALOG NO.	ITEM CODE	DESCRIPTION	SHAFT SIZE	WEIGHT	
				lbs	kg
CRP150	04517	Reams 1 ½" Sch. 40 PVC, CPVC & ABS Fittings	¾" Hex	0.3	0.1
CRP200	04518	Reams 2" Sch. 40 PVC, CPVC & ABS Fittings	¾" Hex	0.4	0.18



videos.reedmfgco.com/cleanream



CRP150

CRP200

### ✓ WHY REED?

Mid-price solution for a durable tool that respectfully cleans out plastic pipe fittings.

**+** MORE Plastic Pipe Fitting Reamers on P. 27 of Reed's catalog.

## RATCHET SHEARS

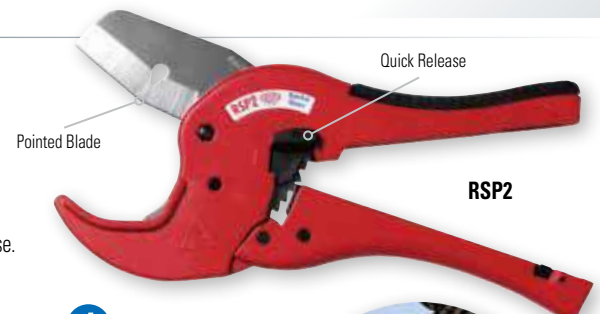
### FEATURES

- Pointed blade in one-hand, ratcheting RSP2 helps start the cut in tough plastics and helps avoid bounce in thin wall material.
- V-shaped cradle supports pipe giving 3 touch points - 2 at bottom and main one on blade.
- Hardened steel blade makes RSP2 ideal for cutting PE, PP, PEX and ABS.
- Quick release lever to open blade, along with safety latch to keep tool closed when not in use.
- Sharpen or replace blade for best performance.

Ratchet shears with hardened steel blades are ideal for cutting PE, PP, PEX and ABS pipe. Pointed blade in one-hand model **RSP2** helps start the cut in tough plastics and helps avoid bounce in thin wall material.

NOTE: Not recommended to cut PVC or CPVC for solvent cement weld connections. Instead use Reed Quick Release™ Tubing Cutters.

CATALOG NO.	ITEM CODE	CAPACITY		LENGTH		WEIGHT	
		actual O.D. in	actual O.D. mm	in	mm	lbs	kg
RSP2	04277	2" nom. IPS (2.5" actual O.D.)	63	11.5	292	1.56	0.7



Pointed Blade

Quick Release

RSP2

**+** MORE Ratchet Shears on P. 26 of Reed's catalog.



## CONE CHAMFER TOOL DRILL-POWERED OR MANUAL



### FEATURES

- Chamfer pipe and have it ready for glue in seconds.
- Cone shape chamfers full range of 3/4" - 2 1/2" nominal plastic pipe sizes.
- Power or manual operation possible due to removable shaft.
- Works great for PE water service lines.

Cone Chamfer Tool efficiently chamfers the inside or outside diameter of multiple pipe sizes, including metric pipe sizes, with one tool. Chamfer pipe and be ready for glue in seconds. Generally used with a drill, the removable 3/8" hex shaft also permits manual operation. The cone chamfer tool is designed for PE, PVC, CPVC, PEX, ABS and PP pipe. The tool's hardened steel blade is sharp and durable, providing a fast chamfer result in seconds, with smooth edges. For best results, replace blade as needed.

CATALOG NO.	ITEM CODE	CAPACITY		WEIGHT	
		in	mm	lbs	kg
PDEB250	04438	3/4 - 2 1/2	40 - 75	0.2	0.1

### REPLACEMENT BLADES

CATALOG NO.	ITEM CODE	DESCRIPTION
PDEB250B	94440	PDEB250 Blades, 2/pk.

## CORDLESS POWER PIPE BEVELER

### FEATURES

- Cordless power tool deburrs and bevels plastic pipe **quickly**.
- Adjustable CPB beveler creates 15° external bevel, up to 5/8" long on plastic pipe.
- **Long-lasting** carbide router bit with four flutes and high RPMs for fast, smooth cuts.
- Ideal for **large diameter** plastic pipe.
- Optional accessory beveler shroud CPBIDS rapidly bevels 2" and larger internal diameters.

Reed's Cordless Power Pipe Beveler quickly and easily deburrs and bevels plastic pipe of 2" and larger diameter. This lightweight tool creates fast, smooth cuts in the field with ease. Extremely useful on most PVC glued joints and some sizes of bell and gasket joints. Easily adjustable for bevel length, **RBIT1** router bit evenly cuts a 15° external bevel up to 5/8" long. Or use the optional **RBIT2** router bit to create 12° bevels up to 1" long. Always defer to pipe manufacturer specifications for bevel recommendations.

For internal bevels on plastic conduit of 2" or more, electrical and utility contractors appreciate the ability to make pipe interiors snag-free. The **CPBKIT** is a complete kit for ID beveling. The **CPBKIT** can be converted to an internal beveler with the optional ID Beveler Shroud (**CPBIDS**).

The Cordless Power Beveler Kit (**CPBKIT**) consists of the beveler attachment powered by a 22,000 RPM, 18V cordless die grinder with a 4 Amp Lithium-ion battery. The grinder has more than sufficient RPMs to provide smooth cuts. The included **RBIT1** cutting tool is a four flute, carbide router bit which delivers consistent, quick cuts.

CATALOG NO.	ITEM CODE	DESCRIPTION	BEVEL LENGTH*	CAPACITY		GROSS WEIGHT	
				in-nom	mm	lbs	kg
CPBKIT	04640	Kit with CPB Beveler Attachment, RBIT1 Router Bit, Bosch® Die Grinder, Battery & Charger, 120 V, 60 Hz	Adjustable 1/8" - 5/8"	2" and up	50	11.9	5.4
CPBEKIT	04642	Kit with CPB Beveler Attachment, RBIT1 Router Bit, Bosch® Die Grinder - for export	Adjustable 1/8" - 5/8"	2" and up	50	8.3	3.8
CPBIDKIT	04643	Kit for interior diameter with CPBIDS Shroud, Beveler Attachment, RBIT1 Router Bit, Bosch® Die Grinder, Battery & Charger, 120 V, 60 Hz	Adjustable 1/8" - 5/8"	2" and up	50	11.9	5.4

\*Add RBIT2 for bevel length of 7/16" - 1"

NOTE: Battery & Charger Kit: Bosch® SKC181-101 18V Lithium-ion.

### ACCESSORIES

CATALOG NO.	ITEM CODE	DESCRIPTION
RBIT1	44644	Carbide Router Bit, 15°
RBIT2	44648	Carbide Router Bit, 12°
CPBIDS	94644	Beveler Shroud for internal bevel on plastic pipe 2" or larger



*Bevel in the field efficiently as cordless unit allows operator to move freely.*



videos.reedmfgo.com/cpb



PIPE TOOLS & VISES  
SINCE 1896

# WATER SERVICES TOOLS & MACHINES

## TAPPING COMPOUND

### FEATURES

- Squeeze bottle with flip cap facilitates jobsite use.
- **New formula** as of September 2016.
- **Fully synthetic** formula holds up well under temperature extremes.
- Formula **resists water** washout.

Tapping Compound is a cutting lubricant. Fully synthetic and rated H1 food grade, Reed Tapping Compound is impact resistant and resists water washout. Applied liberally to drill taps, it extends tool life and produces fast, smooth taps. Tapping Compound requires direct hand application by the user.

CATALOG NO.	ITEM CODE	DESCRIPTION
TMTC6	99140	6 oz. (170 g) Squeezable Bottle

TMTC6



**✓ WHY REED?**  
Food-grade compound that **does not** contaminate water, making this compound environmentally friendly.

**+** MORE Tapping Tools on P. 39 of Reed's catalog.

## PIVOT HEAD VALVE & CURB KEYS

### FEATURES

- **Pivoting** head fits difficult-to-reach 2" operating nuts.
- Heavy gauge, mechanical steel tubing shafts **support** a maximum torque of 200 foot-pounds.
- Made in USA, Reed valve keys feature **strong welds** at critical points.
- As a **safety feature**, Reed valve keys bend before they break.
- Use manually with included handle or add Reed's 700PD power drive and clutch for power valve operation.

Reed Valve and Curb Keys are built for strength and durability. All of Reed's key assemblies will support a maximum torque of 200 foot-pounds. Upper shafts are made from heavy-gauge, mechanical steel tubing plus curb key ends are machined from solid steel for strength. As a safety feature, keys bend before breaking to indicate overload. Made in USA, Reed valve and curb keys also feature strong welds at critical points.

Valve and curb keys have a telescoping design. When telescoped in, they are under 4 feet long and fit easily in small utility trucks, behind pickup seats, and in car trunks. When telescoped out, lengths of 5 feet to 10 feet are possible. **VKP** and **VKP10** feature a pivot head used for leaning or unparallel valves which can occur over time as lines settle.

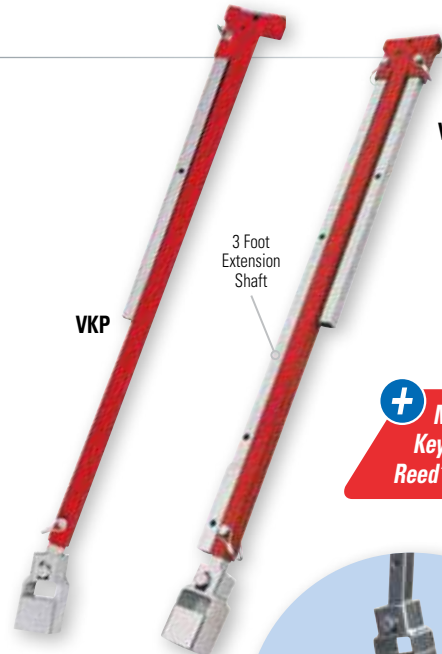
For greater control and versatility, a variety of tools fit the end of these T handles to turn curb stops. Optional clip-on tools turn small valve wheels and curb box rods. Valve keys may be used manually or with Reed's 700PD power drive and clutch for electric or pneumatic power. With this wide variety, operators choose valve keys according to the needs of their systems.

CATALOG NO.	ITEM CODE	DESCRIPTION	CLOSED LENGTH		OPEN LENGTH		WEIGHT	
			in	mm	in	mm	lbs	kg
VKP	02341	Pivoting Valve Key for 2" Operating Nut, Adjustable Length	46.5	1181	82	2083	16	7.3
VKP10	02345	Pivoting Valve Key with 3-foot Extension for 2" Operating Nut, Adjustable Length	46.5	1181	118	2997	21	9.5
VKP3CK1CK2	02369	Pivoting Valve Key + 1" Curb Key + 2" Curb Key	46.5	1181	82	2083	20.1	9.1
VKPLS	92344	Lower Shaft with Pivot Key Head	-	-	43.5	1105	5.8	2.6

### ✓ WHY REED?

When it comes to turning gate valves in the street and curb stop valves to buildings, Reed's selection of Valve Keys is the most complete and compact around.

VKP10



**+** MORE Valve Keys on P. 48 of Reed's catalog.

VKP in use



VKP Pivot Head



videos.reedmfgco.com/vkeys

## CORPORATION STOP KEY SOCKETS



CSK3

Great toolbox addition to aid with corp stop keys.



CSK



L25

### FEATURES

- Universal slot fits most standard corp stops and meter keys in the field.
- Corporation Socket for 3/4" – 2" corp stops.
- Attaches to 1/2" drive wrench.
- Use with a wrench extension for deep service boxes.

Reed's Corporation Stop Key Sockets and disc fit most standard corp stops and meter keys in the field. They are a great help for opening and closing the corp stop key. Choose from steel or cast iron construction. Check the slot width for the right size for the job. Use with a ratchet wrench for tight quarters applications.

CATALOG NO.	ITEM CODE	DESCRIPTION	WEIGHT	
			lbs	kg
CSK	02237	Steel, Slot width 0.54"	0.15	0.07
L25	02272	Cast iron, Uses drive wrench or socket wrench, Slot width 0.48"	0.45	0.20
CSK3	02118	Steel, Rotate handle end for three different slots: .450", .390", .312"	0.55	0.30

## VALVE OPERATORS

### FEATURES

- Digital counter makes the job simpler by tracking turns for the operator.
- Clutch with counter can be retrofit to Reed Valve Operators already in the field.
- Choose from electric or pneumatic power to exercise the valves.

A Valve Operator provides power to make valve turns easy. This portable and economical tool is great for preventive maintenance in valve exercising. Individuals working alone can isolate a leak by shutting multiple valves with this time-saving tool. **VOK700PDCC** uses electricity to drive the clutch whereas pneumatic **VOK700APD** uses compressed air. The **VOKCC** clutch with digital counter applies up to 150 ft-lbs of torque and disengages when torque exceeds preset value. The clutch accepts 1" square shafts. The included Valve Key extends from 4 to 9 feet and recommended operation is at chest height for best leverage.



VOK700PDCC

VOK700PDCC in use



CATALOG NO.	ITEM CODE	DESCRIPTION	GROSS WEIGHT*	
			lbs	kg
VOKCC	05284	Spring-Loaded Valve Key Clutch with Digital Counter	10.5	4.8
VOK700PDCC	05285	Kit includes 700PD electric power drive, VOKCC, 2" valve key, and valve key extension	65.4	29.7
VOK700APDCC	05286	Kit includes 700APD pneumatic power drive, VOKCC clutch, 2" valve key, and valve key extension	80.0	36.4

\*GROSS WEIGHT includes all components plus packaging.

**+ MORE Valve Operators on P. 49 of Reed's catalog.**

VOKCC







PIPE TOOLS & VISES  
SINCE 1896

# VICES

## MID-LINE VISE

### FEATURES

- Heavy-duty, cast iron, main body parts.
- Throat depth designed for use with pipe.
- Hardened, reversible, replaceable steel jaws with machined serrations.
- Enclosed, lubricated spindle design.
- 360 degree, slip-proof swivel base with double lockdowns.

Mid-line vises are of strength and price between the Combination Vise and Utility Vise. Design features a machined work surface. The main screw and nut are totally enclosed to keep out dirt and eliminate wear. Straight line pull through the bar and the body greatly reduces wear on main vise nut. Mid-line vises are imported and have replaceable, hardened steel jaw facings and replaceable pipe jaws which are serrated and heat-treated. The base swivels 360° and has two swivel base locking clamps with toothed engagement. Built for a lifetime of service.

CATALOG NO.	ITEM CODE	THROAT DEPTH*		JAW WIDTH		JAWS OPEN <sup>Ω</sup>		PIPE CAPACITY	WEIGHT	
		in	mm	in	mm	in	mm	in-nom.	lbs	kg
708**	01390	4.75	120.7	8	203	8.25	209.6	1/4 - 3 1/2	91.5	41.6

\*See illustration

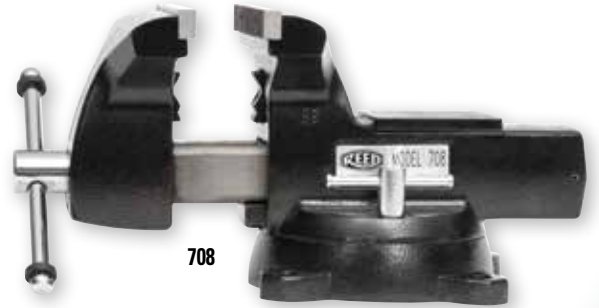
<sup>Ω</sup>See illustration

\*\*3 or more pieces in any combination must ship by truck freight. 

### ✓ WHY REED?

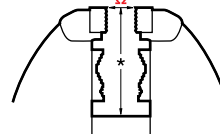
Vises have enclosed screw assembly for all-weather protection.

Swivel-base models feature positive-locking base.



708

Jaws Open



\*Throat Depth

+ MORE Vises on P. 65 of Reed's catalog.

# WRENCHES

## ALUMINUM STRAP WRENCHES

### FEATURES

- Aluminum construction for **lighter weight**.
- Some models with longer straps for even **greater capacity**.
- Gripping power without scratching or deforming plastic or polished metal pipe.

Strap wrenches provide gripping power without scratching or deforming plastic or polished metal pipe. Aluminum handle lessens the weight of the wrench. Use on plastic pipe, filters, or any slick or smooth surface. Strap wrenches work well on irregular shapes, too. Reed's coated polyester strap provides slip resistance and durability. **ASW12A30** and **ASW18A48** feature extra-long straps for increased leverage on large diameters.

CATALOG NO.	ITEM CODE	PIPE CAPACITY		TUBE CAPACITY		HANDLE LENGTH		WEIGHT	
		in-nom.	actual O.D. mm	actual O.D. in	actual O.D. mm	in	mm	lbs	kg
ASW12A	02231	1/8 - 2	10 - 63	3 1/2	90	12	305	0.8	0.4
ASW12A30	02232	1/8 - 5	10 - 127	7 1/2	190	12	305	0.9	0.4
ASW18A	02233	1 - 5	33 - 127	6	150	18	458	1.6	0.7
ASW18A48	02234	1 - 12	33 - 305	12	300	18	458	1.7	0.8
ASW24A	02235	2 - 12	60 - 324	14	350	24	610	2.65	1.2

ASW12A



ASW18A



ASW24A



+ MORE Strap Wrenches on P. 70 of Reed's catalog.



*Reed Hand Tools are for the professional trade and are warranted against all failure due to defects in workmanship and materials for the normal life of the tool.*

**FAILURES DUE TO MISUSE, ABUSE, OR NORMAL WEAR AND TEAR ARE NOT COVERED BY THIS WARRANTY.**

*Power units for Universal Pipe Cutters, Saw It® pneumatic saw, hydrostatic test pumps, cordless power pipe bevelers, and threading power drives are warranted for a period of one year from date of purchase. Hydraulic pumps for PE Squeeze-Off tools have a one year warranty from date of purchase.*

*No party is authorized to extend any other warranty. No warranty for merchantability or fitness for a particular purpose shall apply.*

*No warranty claims will be allowed unless the product in question is received freight prepaid at the Reed factory. All warranty claims are limited to repair or replacement, at the option of the company, at no charge to the customer. Reed is not liable for any damage of any sort, including incidental and consequential damages. Some states do not allow the exclusion or limitation of incidental or consequential damages, so the above exclusion may not apply.*

*This warranty gives you specific legal rights, and you may also have other rights which vary from state to state.*



**PIPE TOOLS & VISES  
SINCE 1896**

***WE ARE DEDICATED TO EARNING &  
KEEPING YOUR BUSINESS.***

**Phone**  
**800.666.3691** (US/Canada)  
or **814.452.3691**  
7:30 am - 5:30 pm Eastern Time

**Fax**  
**800.456.1697** (US/Canada)  
or **814.455.1697**

**Email**  
**[reedsales@reedmfgco.com](mailto:reedsales@reedmfgco.com)**

**Shipping Address**  
1425 West 8th Street  
Erie, Pennsylvania 16502 USA

**Mailing Address**  
P.O. Box 1321  
Erie, Pennsylvania 16512 USA

**[www.reedmfgco.com](http://www.reedmfgco.com)**

# 1

## CUTTERS & CUTTER WHEELS..... 10

Cutter Wheels.....	7 - 9
Quick Release™ Tubing Cutters (for metal).....	11
Tubing Cutters.....	11
Tubing Cutters for Stainless Steel.....	11
Telescoping Tubing Cutters.....	12
Mini Tubing Cutters.....	12
C Cutters.....	12
Repair Kits.....	13
2" Pipe Cutters.....	13
Deburring Tools (for metal).....	13
Soil Pipe Cutters.....	14
Saw It® Pneumatic Saw.....	15
Power Hack Saw Blades.....	15
Universal Pipe Cutters.....	16 - 17
Filter-Regulator-Lubricator.....	17
Hinged Cutters™.....	18
Hinged Cutters™ with Helper Handle.....	18
<b>NEW</b> Low Clearance Rotary™ Cutters.....	19
Rotary™ Cutters.....	19
Pipe Descalers.....	20
Pipe Reamer (for steel).....	20

## LARGE DIAMETER PIPE TOOLS..... 22 - 23

# 2

## PLASTIC PIPE TOOLS..... 24

<b>NEW</b> Quick Release™ Tubing Cutters for Plastic.....	25
Scissor Shears.....	25
<b>NEW</b> Ratchet Shears.....	26
Plastic Pipe Saws.....	26
Internal Pipe Cutters.....	27
Clean Ream Extreme™.....	27
<b>NEW</b> Solutions Kits.....	28
PE Pipe Peelers.....	28
Flare Tools for PE Water Service Lines.....	28
DEB1 Series Deburring Tools for Plastic Pipe.....	29
DEB4 Deburring Tool.....	29
Cone Deburring Tool.....	29
PEX Crimpers.....	30
Pipe Bevelers (for PVC).....	30
Chamfer Tools Drill-Powered (for PVC/CPVC/ABS).....	30
Universal Pipe Cutters for PE.....	31
PLAS In-Line Rotary™ Cutters (for PE/PVC).....	32
PLAS Hand-Over-Hand Rotary™ Cutters (for PE/PVC).....	32
Guillotine Pipe Cutters (for PE).....	33
<b>NEW</b> PE Squeeze-Off Tools.....	34 - 35
Grounding Accessory.....	35
Static Discharge Alarm.....	35
Plastic Pipe Joiners (for PVC).....	36

# 3

## WATER SERVICES TOOLS & MACHINES..... 37

<b>NEW</b> Feed Tap™ Drilling Machines.....	38
Direct Tapping Machine.....	39
Drill Taps.....	39
Drilling Machines.....	40 - 41
Combination Drilling/Tapping Machines.....	42
PVC/PE Drilling Machines.....	42 - 43
Power Units for Tapping/Drilling.....	43
PE Water Service Shut-Off Tool.....	44
Standing Shut-Off Tool.....	44
Copper Shut-Off Tools.....	44
Flare Tools.....	45
Rerounding Tools.....	45
Brass Hammer.....	45
Round It® Straightener/Rerounders.....	45
Fiberglass Probe Rod.....	46
Meter Pit Pump.....	46
Manhole Hooks.....	46
Drill-Powered Hydrostatic Test Pump.....	47
Electric Hydrostatic Test Pumps.....	47
Hydrostatic Test Pumps.....	47
<b>NEW</b> Valve & Curb Keys.....	48
Ratcheting Valve Keys.....	48
<b>NEW</b> Valve Operators.....	49
Meter Box & Curb Box Lid Keys.....	49

# 4

## GROOVERS, POWER DRIVES, THREADERS & DIES..... 50

Combo Roll Groover.....	51
Portable Roll Groovers.....	51
5301PD Power Drives.....	52
Ground Fault Interrupter.....	52
5401TMSO Threading Machines.....	53
Machine Cart.....	53
700PD Power Drives.....	54
700APD Pneumatic Power Drives.....	54
601PD Power Drives.....	55
Oilers.....	56
Threadguard Cutting Oil.....	56
R12+ Segmental Dies.....	57
R12+ Dropheads.....	57
R12+ Threader Sets.....	57
Universal Dies.....	58
Universal Die Head.....	58
Enclosed Ratchet Threader Sets.....	59
Enclosed Dropheads.....	59
Adjustable Guide Threader Sets.....	60
Block Dies.....	60

<b>5</b>	<b>VICES</b>	61
	<b>NEW</b> Tripod Vises	62 - 63
	Pipe Jacks	63
	Chain Vises	64
	Field Pipe Vise	64
	Yoke Pipe Vises	64
	Utility Workshop Vises	65
	<b>NEW</b> Mid-Line Vises	65
	Combination Bench & Pipe Vise	65
	Brass Vise Jaw Caps	66
	Pipe Welding Vise	66

<b>6</b>	<b>WRENCHES</b>	68
	Pipe Wrenches	69
	60" Pipe Wrench Parts	69
	Aluminum Pipe Wrenches	69
	Chain Tongs	70
	Chain Wrenches	70
	<b>NEW</b> Strap Wrenches	70
	Adjustable Wrenches	71
	Comfort Grip - Adjustable Wrenches	71
	Torque Wrenches for Cast Iron Soil Pipe	71
	Thru-Bolt™ Ratchet Wrenches & Sockets (Standard & Metric)	72
	Thru-Bolt™ Larger Ratchet Wrench & Sockets	73
	Square Drive Ratchet Wrenches	73

<b>NEW</b> Extended Sockets	73
Thru-Bolt™ 4-in-1 Ratchet Wrench	74
Thru-Bolt™ Dual Socket Ratchet Wrenches	74
Thru-Bolt™ Dual Socket Adjustable Ratchet Wrench	75
Basin Wrench	75
One Hand Meter Wrenches	75
Comfort Grip - One Hand Meter Wrench	75
Operator's Wrench	76
Valve Packing Wrenches	76
Valve Wheel Wrenches	76
Smooth Jaw Wrenches	77
Hydrant Wrenches	77
Ratcheting Hydrant Wrench	77

<b>7</b>	<b>GENERAL PIPE WORKING TOOLS</b>	78
	Mechanical Hot Tapping Machines	79
	Tubing Benders	79
	Stud Punch	80
	Multi-Purpose Pipe Joiner	81
	Torpedo Level	81
	Hack Saw & Blades	81
	Water Pump Pliers	82
	Positive Grip Pliers	82
	Threaded Rod Cutters	82

# REED

## MISSION STATEMENT

*Reed will develop a growing market position in the pipe tool industry by providing the most innovative and the highest quality tools, the best customer service, the lowest total cost and the greatest value to distributors and tool users.*



*Reed seeks to utilize very effective personnel, the most modern, cost-effective equipment, and total quality management concepts in order to achieve challenging objectives. Reed also seeks to provide a great place to work, to be environmentally responsible and to be a good corporate citizen.*

[www.reedmfgco.com](http://www.reedmfgco.com)



# SPECIAL FEATURES

PIPE TOOLS & VISES  
SINCE 1896

Throughout the catalog, various symbols are used to help the reader identify key points:



**Reed Exclusive Tool** – The tool is unique, available only from Reed, offers operational cost savings or safety features, and at least one advantage to buying Reed.



**Reed Exclusive Features** – The tool has special features available only from Reed. These meaningful features are advantages to buying Reed.



**Reed Exclusive Sizes** – The tool is available in certain capacities only from Reed. These unique capacities are advantages to buying Reed.



**Reed Best Ever** – The tool has been improved over all previous versions. These continuous improvements are advantages to buying Reed.



**Reed Online Video Training** – Numerous tools offer training videos through the Reed website or YouTube.




**Reed Metric Sizes** – The tool has metric-only sizing. However, Reed offers a wide variety of other tools to fit metric pipe since most tools suit a range of sizes.



Next to many of the tools in this catalog, there is a brief statement headed by the term: "**WHY REED?**" This statement explains why that particular Reed tool is superior to any other on the market, and can be used with confidence to compare Reed products with the competition.



**New Tools** are indicated by  symbol, while models added to the Reed line are highlighted in charts in red ink. To Reed, "**NEW**" means the tool was introduced within the last 12 months.



**Reed Extra Value** – The tool offers extra cost savings over the previous Reed version – or the competitors'.



**Truck Freight Required** – These tools require truck freight due to size or weight.

## REED - REGISTERED & TRADEMARKED

**Clean Cut®**

**Clean Ream Extreme™**

**Clean Ream Plus™**

**Cutter Wheel Headquarters™**

**Feed Tap™**

**Hinged Cutter™**

**Quality First®**

**Quick Release™ Cutter**

**Rotary™ Cutter**

**Round It®**

**Saw It®**

**Thru-Bolt™**

## HOW TO FIND REED DISTRIBUTORS

**BUY NOW »**

LOCAL OR ONLINE

To find the nearest Reed distributor, visit WHERE TO BUY on [www.reedmfgco.com](http://www.reedmfgco.com).

There is a section for FIND A DISTRIBUTOR which uses a zip code/postal code search to identify nearby stocking distributors. There is also SHOP ONLINE DISTRIBUTORS which links to vetted, stocking Reed distributors that also run online retailer websites.

Alternatively, contact Reed Sales or a Reed Regional Manager or Manufacturer's Representative to find a distributor.

# REPLACEMENT WHEELS

FOR EVERY PIPE & PIPE CUTTER



**BEST EVER!**

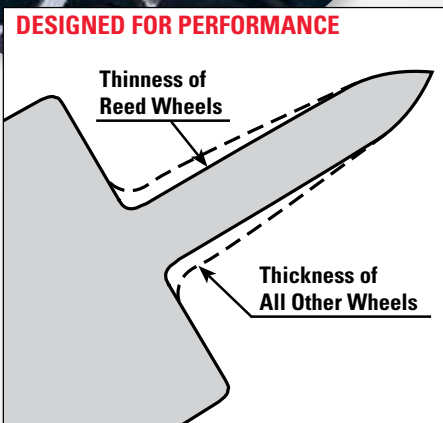
## ✓ **WHY REED? CUTTER WHEELS ARE BETTER...**

All Reed cutter wheels are made from high shock-resistant tool steel, while competitive wheels are made from carbon steel or still lower quality tool steel. By using this higher quality raw material, Reed cutter wheels can be made thinner and can therefore cut pipe more easily and leave less burr. Also, because of their higher quality, certified material, only Reed wheels can be heat-treated for the perfect balance between hardness and toughness to make the wheels resist breakage and last longer.

Reed pioneered the development of wheels for plastic pipe and today has the widest variety and highest quality wheels for various types and wall thicknesses of plastic pipe and tubing.

Reed offers the largest cutter wheel line for all types of pipe, tubing and conduit. Reed wheels are the best value for use in Reed cutters, or in the cutters of any other manufacturer.

**CUTTER WHEEL INTERCHANGEABILITY CHARTS P. 7-9**



**BE ON THE CUTTING EDGE WITH REED!**



Back



Front

The most popular types of genuine Reed cutter wheels (P. 7) are also sold in convenient, two-pack display bags for quick and easy showroom purchases.

[www.reedmfgco.com](http://www.reedmfgco.com)



PIPE TOOLS & VISES  
SINCE 1896

## Reed 2-Pack Replacement Cutter Wheels

Item Code	Reed Catalog No.	Std. Pack	Reed Cutter	Blade Exposure**		Application
				inches	mm	
<b>FOR TUBING CUTTERS - METAL, 2-PACK</b>						
63375	2PK-SLRCW	1	TC50SL; TC75SL; TC1SL; TC50SLR; TC75SLR; TC1SLR	0.116	2.9	Copper (K, L & M); CTS CPVC
63612	2PK-2RBS	1	2-1; 2-1Q; 2-4WG; 2-3; 2-3Q; 2-4; 5401TMSO	0.300	7.6	Steel; Stainless Steel
63613	2PK-2RBHD	1	2-1; 2-1Q; 2-4WG; 2-3; 2-3Q; 2-4; 5401TMSO	0.296	7.5	HD for Steel; Stainless Steel
63655	2PK-OSS	1	TC1Q; TC1.6Q; TC2Q; T10; T15; T20	0.160	4.1	Stainless Steel
63659	2PK-OCSST-2	1	TC1.6Q; TC1.6RGT; TC2Q; TC2QRGT	0.281	7.1	CSST
63660	2PK-O	1	TC1Q; TC1.6Q; TC2Q; T10; T15; T20; RT15T1; RT15T2; RT15T3; RTC1.1; RTC1.4	0.180	4.6	Copper; Aluminum; Brass; Steel
63661	2PK-32633	1	MC1	0.127	3.2	Copper; Aluminum; Brass; Steel
63662	2PK-75015	1	TC11; TC17	0.125	3.2	Copper; Aluminum; Brass; Steel
63663	2PK-75046	1	TC11; TC17	0.125	3.2	Stainless Steel
63665	2PK-30-40	1	TC3Q; TC4Q; TC5Q; TC6Q; TC8Q	0.250	6.4	Copper; Aluminum; Brass; Steel
63666	2PK-345T	1	MC2; MC2GRIP	0.146	3.7	Copper; Aluminum; Brass
63670	2PK-R2558	1	TC3Q; TC4Q; TC5Q; TC6Q; TC8Q	0.188	4.8	Muffler Systems Tubing
63671	2PK-30-40SS	1	TC3Q; TC4Q; TC5Q; TC6Q; TC8Q	0.160	4.1	Stainless Steel
63690	2PK-73505	1	TC14; TC166; MC3	0.170	4.3	Copper; Aluminum; Brass; Steel
63691	2PK-73515	1	TC14; TC166	0.170	4.3	Stainless Steel Only
<b>FOR TUBING CUTTERS - PLASTIC, 2-PACK</b>						
64180	2PK-OP2	1	TC1Q; TC1.6Q; TC2Q; T10; T15; T20	0.275	7.0	ABS; PE; PEX; PP; PEX/AL/PEX
64184	2PK-1-2PVC	1	TC1Q; TC1.6Q; TC2Q; T10; T15; T20	0.280	7.1	PVC; CPVC; PVDS; ABS
64190	2PK-30-40P	1	TC3Q; TC4Q; TC5Q; TC6Q	0.343	8.7	ABS; PE; PP
64194	2PK-3-6PVC	1	TC3Q; TC4Q; TC5Q; TC6Q	0.377	9.6	3"-6" PVC; 4" Heavy Wall; CPVC

## Reed Replacement Cutter Wheels

Item Code	Reed Catalog No.	Std.* Pack	Reed Cutter	Blade Exposure**		Application
				inches	mm	
<b>FOR TUBING CUTTERS - METAL</b>						
03375	SLRCW	12	TC50SL; TC75SL; TC1SL; TC50SLR; TC75SLR; TC1SLR	0.116	2.9	Copper (K, L & M); CTS CPVC
03655	OSS	12	TC1Q; TC1.6Q; TC2Q; T10; T15; T20	0.160	4.1	Stainless Steel
03657	3T23	4	T23	0.125	3.2	Copper; Aluminum; Brass; Steel
03659	OCSST-2	12	TC1.6Q; TC1.6RGT; TC2Q; TC2QRGT	0.281	7.1	CSST
03660	0	12	TC1Q; TC1.6Q; TC2Q; T10; T15; T20; RT15T1; RT15T2; RT15T3; RTC1.1; RTC1.4	0.180	4.6	Copper; Aluminum; Brass; Steel
03661	32633	12	MC1	0.127	3.2	Copper; Aluminum; Brass; Steel
03662	75015	12	TC11; TC17	0.125	3.2	Copper; Aluminum; Brass; Steel
03663	75046	12	TC11; TC17	0.125	3.2	Stainless Steel
03665	30-40	12	TC3Q; TC4Q; TC5Q; TC6Q; TC8Q	0.250	6.4	Copper; Aluminum; Brass; Steel
03666	345T	12	MC2; MC2GRIP	0.146	3.7	Copper; Aluminum; Brass
03668	R4546	6	MC2; MC2GRIP	0.161	4.1	Steel; Stainless Steel
03670	R2558	12	TC3Q; TC4Q; TC5Q; TC6Q; TC8Q	0.188	4.8	Muffler Systems Tubing
03671	30-40SS	12	TC3Q; TC4Q; TC5Q; TC6Q; TC8Q	0.250	6.4	Stainless Steel
03690	73505	12	TC14; TC166; MC3	0.170	4.3	Copper; Aluminum; Brass; Steel
03691	73515	12	TC14; TC166	0.170	4.3	Stainless Steel Only
<b>FOR TUBING CUTTERS - PLASTIC</b>						
04159	TC56QPP-R	6	TC5Q; TC6Q; TC8Q	0.744	18.9	PP-R including Aquatherm®
04180	OP2	12	TC1Q; TC1.6Q; TC2Q; T10; T15; T20	0.275	7.0	ABS; PE; PEX; PP; PEX/AL/PEX
04184	1-2PVC	12	TC1Q; TC1.6Q; TC2Q; T10; T15; T20	0.280	7.1	ABS; PVC; CPVC; PVDF
04190	30-40P	12	TC3Q; TC4Q; TC5Q; TC6Q	0.343	8.7	ABS; PE; PP
04192	680PVC	4	TC6Q; TC8Q	0.575	14.6	PVC-Standard & Heavy Wall; CPVC
04194	3-6PVC	12	TC3Q; TC4Q; TC5Q; TC6Q	0.377	9.6	ABS; 3"-6" PVC; 4" Heavy Wall; CPVC
04198	6QP	4	TC4Q; TC5Q; TC6Q; TC8Q	0.550	14.0	Thick Wall PE
04199	80P	4	TC6Q; TC8Q	0.750	19.1	ABS; PE; PP
<b>FOR PIPE CUTTERS</b>						
03612	2RBS	12	2-1; 2-4WG; 2-3; 2-4; 5301PD; 5401TMSO	0.300	7.6	Steel; Stainless Steel
03613	2RBHD	12	2-1; 2-4WG; 2-3; 2-4; 5301PD; 5401TMSO	0.296	7.5	HD for Steel; Stainless Steel
03624	2RBCL	4	2-1; 2-4WG; 2-3; 2-4	0.172	4.4	Cast Iron
03616	3RG	4	4-1; 4-3; 4-4; 4-4WG	0.172	4.4	Steel; Stainless Steel
03617	3RGCI	4	4-1; 4-3; 4-4; 4-4WG	0.172	4.4	Cast Iron; Ductile Iron
03532	R1032/S	6	5301PD; 5401TMSO	0.450	11.4	Steel; Stainless Steel; Schd 80

\* Cutter wheels sold to distributors in standard package quantities only.

\*\* Blade Exposure determines wall thickness capacity of cutter wheel.

## Reed Replacement Cutter Wheels

Item Code	Reed Catalog No.	Std.* Pack	Reed Cutter	Blade Exposure**		Application
				inches	mm	
<b>FOR HINGED CUTTERS</b>						
03502	HS21/2	4	H21/2	0.312	7.9	Steel; Stainless Steel
03504	HS4	4	H4; LCRC4	0.316	8.1	Steel; Stainless Steel
03505	HS14	4	H4	0.275	7.0	Steel; Stainless Steel; Cast Iron; Ductile Iron
03506	HS6	4	H6	0.382	9.9	Steel; Stainless Steel; Copper
03507	HS16-8	4	H6; H8	0.350	8.9	Steel; Stainless Steel; Cast Iron; Ductile Iron
03508	HS8-12	4	H8; H12	0.450	11.4	Steel; Stainless Steel
03510	HX21/2	4	H21/2	0.383	9.7	Steel; Stainless Steel; Schd 80
03512	HX4	4	H4; LCRC4	0.383	9.7	Steel; Stainless Steel; Schd 80
03514	HX6	4	H6	0.476	12.1	Steel; Stainless Steel; Schd 80
03516	HX8	4	H8; H12	0.567	14.4	Steel; Stainless Steel; Schd 80
03518	HXX8	4	H8; H12	0.682	17.3	Steel; Stainless Steel; Schd 100
03522	HI4	4	H4; LCRC4	0.258	6.6	Cast Iron; Ductile Iron
03524	HI6	4	H6; H8; H12	0.410	10.4	Cast Iron; Ductile Iron
03525	H6PSE5	4	H6; H8; H12	0.400	10.2	Steel; Cast Iron; Ductile Iron
03624	2RBCI	4	H21/2	0.172	4.4	Cast Iron; Ductile Iron
<b>FOR ROTARY™ CUTTERS</b>						
03530	RCS8-36	4	LCRC8; LCRC12; LCRC16; RC20; RC24; RC30; RC36; RC42S	0.635	16.1	Steel; Stainless Steel
03535	RC18-30	4	LCRC8; LCRC12; LCRC16; RC20; RC24; RC30; RC36	0.500	12.7	Cast Iron; Ductile Iron (manual)
03550	RCX	4	LCRC8; LCRC12; LCRC16; RC20; RC24; RC30; RC36; RC42S	0.800	20.3	Heavy Wall Steel; Stainless Steel

**REQUIRES: ONE SET (8) OF RC8-30XR ROLLERS (93222) WHEN USING RCX WHEELS**

## Reed Replacement Cutter Wheels, by Manufacturer

Manufacturer Cutter No.	Manufacturer Wheel	Reed Cat. No.	Item Code	Std. Pack*	Blade Exposure** inches	mm	Application
<b>RIDGID®</b>							
50	M-50	R2558	03670	12	0.188	4.8	Muffler Systems Tubing
10; 15; 20	E-1240	OSS	03655	12	0.160	4.1	Stainless Steel
10; 15; 20	E-1240	O	03660	12	0.180	4.6	Steel
10; 15; 20	F-158	O	03660	12	0.180	4.6	Copper; Aluminum
101; 103; 104; 105; 118; 150; 150L; 131; 132; 151; 152; 153; 205	E-3469	345T	03666	12	0.146	3.7	Copper; Aluminum; Brass
105; 150; 150L; 131; 132; 151; 152; 153; 205	E-4546	R4546	03668	6	0.161	4.1	Steel; Stainless Steel
131P; 132P; 151P; 152P; 153P; 205P	E-5272	R5272	04186	6	0.295	7.5	PVC; ABS-Standard Wall
134P; 136P; 154P; 156P	E-702	680PVC	04192	4	0.575	14.6	PVC- Standard & Heavy Wall; CPVC
134P; 136P; 154P; 156P	E-2157	60P	04198	4	0.550	14.0	Thick Wall PE
136P; 156P	E-2880	80P	04199	4	0.750	19.1	ABS; PE; PP
1A; 2A; 42A; 202; 300; 360; 820; 364; 732; 300; 535	E-1032S	R1032/S	03532	6	0.450	11.4	Steel; Stainless Steel; Schd 80
1A; 2A; 42A; 202; 360; 820; 364; 732	F-514	2RBS	03612	12	0.300	7.6	Steel; Stainless Steel
1A; 2A; 42A; 202; 360; 820; 364; 732	F-3	2RBHD	03613	12	0.296	7.5	HD for Steel; Stainless Steel
1A; 2A; 42A; 202; 360; 820; 364; 733	F-3S	2RBHD	03613	12	0.296	7.5	HD for Steel; Stainless Steel
1A; 2A; 42A; 206; 360; 820; 364; 732	F-119	2RBCI	03624	4	0.172	4.4	Cast Iron
30; 40; 106; 108; 109; 133; 134; 136; 154; 156	E-2191	30-40	03665	12	0.250	6.4	Copper; Aluminum; Brass; Steel
30; 40; 106; 108; 109; 133; 134; 136; 154; 156	E-2558	30-40	03665	12	0.250	6.4	Copper; Aluminum; Brass; Steel
30; 40; 106; 108; 109; 133; 134; 154; 136; 156	E-2558	R2558	03670	12	0.188	4.8	Muffler Systems Tubing
30P; 40P; 106; 108; 109P; 133P; 134P; 136P; 154P; 156P	E-5299	3-6PVC	04194	12	0.377	9.6	3"-6" PVC; 4" Heavy Wall
30P; 40P; 106; 108; 109P; 133P; 134P; 136P; 154P; 156P	E-5299	30-40P	04190	12	0.343	8.7	ABS; PE; PP
30P; 40P; 133P; 134P; 136P; 154P; 156P	E-2156	30-40P	04190	12	0.343	8.7	ABS; PE; PP
3S; 4S; 44S; 466S; 466C; 466HWS; 468C; 468S; 468HWS; 472C; 472S; 472HWS; 764; 1224	F-229	3RG	03616	4	0.399	10.1	Steel; Stainless Steel
3S; 4S; 44S; 466S; 466C; 466HWS; 468C; 468S; 468HWS; 472C; 472S; 472HWS; 764	F-229S	3RG	03616	4	0.399	10.1	Steel; Stainless Steel
3S; 4S; 44S; 466S; 466C; 466HWS; 468C; 468S; 468HWS; 472C; 472S; 472HWS; 764	F-515	3RG	03616	4	0.399	10.1	Steel; Stainless Steel
42A; 202; 360; 820; 364; 732	E-1032	R1032/S	03532	6	0.450	11.4	Steel; Stainless Steel; Schd 80
466; 468; 472	E-1962	3RGC1	03617	4	0.285	7.2	Cast Iron; Ductile Iron
466C; 466S; 466HWS; 468C; 468S; 468HWS; 472C; 472S; 472HWS	E-3186	R3186	03526	4	0.680	17.3	Steel; Ductile Iron Heavy Wall



## Cutter Wheel Conversions

Manufacturer Cutter No.	Manufacturer Wheel	Reed Cat. No.	Item Code	Std. Pack*	Blade Exposure**		Application
					inches	mm	
<b>ARMSTRONG®</b>							
1T; 2T; 2TA		2RBS	03612	12	0.300	7.6	Steel; Stainless Steel
1T; 2T; 2TA		2RBHD	03613	12	0.296	7.5	HD for Steel; Stainless Steel
4A		3RG	03616	4	0.399	10.1	Steel; Stainless Steel
4A		3RGCI	03617	4	0.285	7.2	Cast Iron; Ductile Iron
<b>GASTITE®</b>							
RT15T1; RT15T3; RT15T2; T15T1; T15T2		0	03660	12	0.180	4.6	Copper; Aluminum; Brass; Steel; CSST
<b>IMPERIAL EASTMAN</b>							
127-F/FA/FB; TC1050; 227-FA	S32633	32633	03661	12	0.127	3.2	Copper; Aluminum; Brass
TC1000; TC1020; 374; 312-FC/FB; 274-FC/FB; 174-F	S75015	75015	03662	12	0.125	3.2	Copper; Aluminum; Brass; Steel
TC1000; TC1020; 374; 312-FC/FB; 274-FC/FB; 174-F	S75046	75046	03663	12	0.125	3.2	Stainless Steel
<b>LENOX®</b>							
21010-TC11/8; 21011-TC13/8; 21012-TC13/4	21017-TCW158C	O	03660	12	0.180	4.6	Copper; Aluminum; Brass; Steel
21010-TC11/8; 21012-TC13/4; 21011-TC13/8; 21013-TC25/8	21015-TCW158SS	OSS	03655	12	0.160	4.1	Brass; Stainless Steel
21013-TC25/8	21016-TCW158P	1-2PVC	04184	12	0.280	7.1	PVC; Plastic
<b>SWAGelok®</b>							
MS-TC-308	MS-TCW-308	OSS	03655	12	0.160	4.1	Stainless Steel
<b>WHEELER REX®</b>							
95041	8050	HS4	03504	4	0.320	8.1	Steel; Stainless Steel
95041	8078	HS4	03504	4	0.320	8.1	Steel; Stainless Steel
95061	8052	HS6	03506	4	0.390	9.9	Steel; Stainless Steel
95081; 95121	8054	HS8-12	03508	4	0.450	11.4	Steel; Stainless Steel
	8002	HX21/2	03510	4	0.383	9.7	Steel; Stainless Steel; Schd 80
95041	8051	HI4	03522	4	0.258	6.6	Cast Iron; Ductile Iron
95061; 95081; 95121	8053	HI6	03524	4	0.410	10.4	Cast Iron; Ductile Iron
95061; 95081; 95121	8076	H6PSE5	03525	4	0.400	10.2	Steel; Cast Iron; Ductile Iron
	8839	RCS8-36	03530	4	0.635	16.1	Steel; Stainless Steel
	8838	RCI8-30	03535	4	0.500	12.7	Cast Iron; Ductile Iron
9590	8001	2RBHD	03613	12	0.296	7.5	HD for Steel; Stainless Steel
	8004	3RG	03616	4	0.399	10.1	Steel; Stainless Steel
	8016	3RG	03616	4	0.399	10.1	Steel; Stainless Steel
9290; 9291	8012	OSS	03655	12	0.160	4.1	Stainless Steel
9290; 9291	8015	O	03660	12	0.180	4.6	Copper; Aluminum; Brass; Steel
	8021	30-40	03665	12	0.250	6.4	Copper; Aluminum; Brass; Steel
9490	8025	30-40	03665	12	0.250	6.4	Copper; Aluminum; Brass; Steel
	8034	345T	03666	12	0.146	3.7	Copper; Aluminum; Brass
	8045	R4546	03668	6	0.161	4.1	Steel; Stainless Steel
90735; 90728; 90750	8071	73505	03690	12	0.170	4.3	Copper; Aluminum; Brass; Steel
	8065	OP2	04180	12	0.275	7.0	ABS; PE; PEX; PP; PEX/AL/PEX
	8036	30-40P	04190	12	0.343	8.7	ABS; PE; PP
	8037	3-6PVC	04194	12	0.377	9.6	3"-6" PVC; 4" Heavy Wall; CPVC

\* Cutter wheels sold to distributors in standard package quantities only.

\*\* Blade Exposure determines wall thickness capacity of cutter wheel.



**Reed has the widest variety of high-quality wheels  
for more cutters and more brands than any other manufacturer!**



# CUTTERS & CUTTER WHEELS

SECTION

1

*Cutter Wheels*

*Quick Release™ Tubing Cutters*

*Tubing Cutters*

*Tubing Cutters for Stainless Steel*

*Telescoping Tubing Cutters*

*Mini Tubing Cutters*

*C Cutters*

*Repair Kits*

*2" Pipe Cutters*

*Deburring Tools*

*Soil Pipe Cutters*

*Saw It® Pneumatic Saw*

*Power Hack Saw Blades*

*Universal Pipe Cutters*

*Filter-Regulator-Lubricator*

*Hinged Cutters™*

*Hinged Cutters™ with Helper Handle*

*Low Clearance Rotary™ Cutters* **NEW**

*Rotary™ Cutters*

*Pipe Descalers*

*Pipe Reamer*

***Hinged Cutters™ are a Reed invention and remain an excellent tool for manual cuts on steel, stainless steel, ductile and cast iron. Handle swing is 90° to 110° with just 4 inch clearance on the back side of the pipe.***



PIPE TOOLS & VISES  
SINCE 1896

## THRU-BOLT™ LARGER RATCHET WRENCH & SOCKETS

### FEATURES

- Sizes from 1 7/16" up to 1 5/8".
- L152 ratchet wrench handles the largest sockets.

For larger hardware found on 30" - 36" diameter pipe, the **L152** is the Thru-Bolt™ ratchet wrench suited to the job. **L26** fits mechanical joints with 1 5/8" hex bolts. **L23** and **L24** sockets fit bolts used on repair clamps, tapping sleeves and other bolt-on pipe apparatus for 30" - 36" diameter pipe.

### HANDLE

Catalog No.	Item Code	Type		Handle Length		Weight	
		Handle	Socket Retention	in	mm	lbs	kg
L152	02670	Stamped	Retaining Ring	17	432	2.5	1.1

### INDIVIDUAL HEX SOCKETS-INCHES

Catalog No.	Item Code	Hex Bolt Size	Weight	
			lbs	kg
L23	02680	1 7/16"	1.0	0.4
L24	02682	1 1/2"	1.1	0.5
L26	02684	1 5/8"	1.1	0.5



## SQUARE DRIVE RATCHET WRENCHES

### FEATURES

- Made to fit only one size of square part/bolt.
- Ratchet wrench reverses by use of the directional pawl or lever.

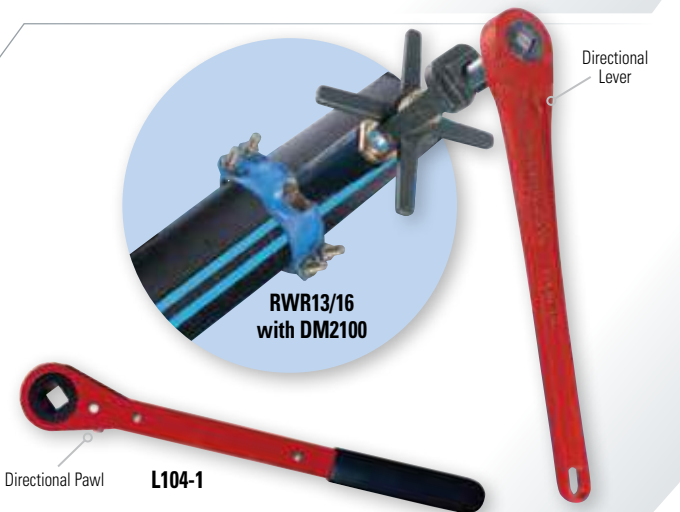
Square drive (female) ratchet wrenches are great for ratcheting line-up clamps for welding steel pipe and for other process piping needs. The ratchet and reverse features speed up jobs. Both heavy-duty cast handles and value stamped handles available.

### HEAVY-DUTY LINE

Catalog No.	Item Code	Type		Handle Length		Weight	
		Handle	Square Size	in	mm	lbs	kg
L16-7/8	02292	Cast	7/8"	16.4	420	4.3	2.0
L16-1	02291	Cast	1"	16.4	420	4.4	2.0
RWR13/16	40383	Cast	13/16"	19.5	495	5.2	2.4

### VALUE LINE

Catalog No.	Item Code	Type	Square Size	Handle Length		Weight	
				in	mm	lbs	kg
L104-7/8	02671	Stamped	7/8"	16.4	420	2.5	2.0
L104-1	02672	Stamped	1"	16.4	420	2.4	2.0



## EXTENDED SOCKETS

### FEATURES

- Extended length (6" and 6 1/2") **impact grade** sockets.
- Kits include a range of sockets in a heavy-duty case.

For hard-to-reach deep well bolts, Reed offers Extended Sockets that are made of tool steel and are impact grade. Use extended sockets to tighten hex nuts on repair clamps, mechanical joint fittings and saddles. Drive them with a 1/2" square drive power impact wrench or hand tighten. Zinc and black chromate finish on sockets provides corrosion-resistance.

Catalog No.	Item Code	Hex Size	Length	Weight	
				lbs	kg
EDS12	02622	3/4"	6 1/2"	1.5	0.7
EDS14	02624	7/8"	6 1/2"	1.6	0.7
★ EDS15	02625	1 5/16"	6 1/2"	1.6	0.7
EDS17	02626	1 1/16"	6"	1.5	0.7
EDS18	02628	1 1/8"	6"	1.5	0.7
EDS20	02630	1 1/4"	6"	1.5	0.7

Catalog No.	Item Code	Description	Weight	
			lbs	kg
EDSK5	02640	Kit with 3/4", 7/8", 1 1/16", 1 1/8" & 1 1/4" extended sockets in a hard plastic case	7.8	3.5
★ EDSK6	02645	Kit with 3/4", 7/8", 1 5/16", 1 1/16", 1 1/8" & 1 1/4" extended sockets in a hard plastic case	9.7	4.4

★ NEW

### ACCESSORY

Catalog No.	Item Code	Description	Overall Length		Handle Length		Weight	
			in	mm	in	mm	lbs	kg
SCFR	40208	1/2" Male Square Drive Ratchet Wrench	15	381	13	330	1.9	0.9

