

MODEL NUMBER	HHI100-18-405TBB		
HORSEPOWER	100		
RPM / POLES	1800 / 4		
VOLTAGE / PHASE	230 / 460 V / 3		
FRAME	405T		
ENCLOSURE / DEGREE OF PROTECTION	TEFC / IP55		
FREQUENCY	60 HZ		
FULL LOAD SPEED	1780 RPM		
SERVICE FACTOR	1.15 SF at 40° C / 1.0 SF at 65° C		
INSULATION CLASS	F Class N Varnish		
FULL LOAD AMPS; 230 / 460	228.1 / 114.1 A Usable On 208 V At 252 A		
LOCKED ROTOR CURRENT (% Full Load)	650 / 650 %		
NEMA CODE LETTER	G		
EFFICIENCY / POWER FACTOR	<u>LOAD</u>	<u>EFF.</u>	<u>P.F.</u>
	100 %	95.4 %	86.5 %
	75 %	95.4 %	84.5 %
	50 %	94.1 %	78.4 %
DUTY CYCLE	S1 / Continuous		
TORQUE	<u>FULL LOAD</u>	<u>LRT</u>	<u>BDT</u>
	296.8 lb.ft.	140 %	220 %
NEMA DESIGN	B		
MOMENT OF INERTIA	<u>LOAD (Max.)</u>	<u>MOTOR</u>	
	1337.213 lb.ft. ²	35.910 lb.ft. ²	
SOUND PRESSURE LEVEL (No Load 1 M From Motor)	80 dB(A)		
NUMBER OF STARTS (Hot / Cold)	2 Hot / 3 Cold		
MAX. AMBIENT TEMPERATURE	40° C at 1.15 SF / 65° C at 1.0 SF		
MAX. ELEVATION	3300 Ft. Above Sea Level		
TEMPERATURE RISE (At Full Load)	80° C		
DRIVE-END BEARING	6316C3		
OPPOSITE DRIVE-END BEARING	6313C3		
GREASE TYPE	Mobil Polyrex EM		
MOUNTING	F1 (F2 Suitable), W6, W8, B3, V5, V6		
ROTATION	Bi-Directional		
APPROXIMATE WEIGHT	1110 lbs.		
AREA CLASSIFICATION	Class I, Division 2, Groups A, B, C, D		
INVERTER RATING	10:1 CT / 20:1 VT - Meets NEMA MG1 Part 31		
SPECIFICATION - In Accordance With	NEMA, CSA		



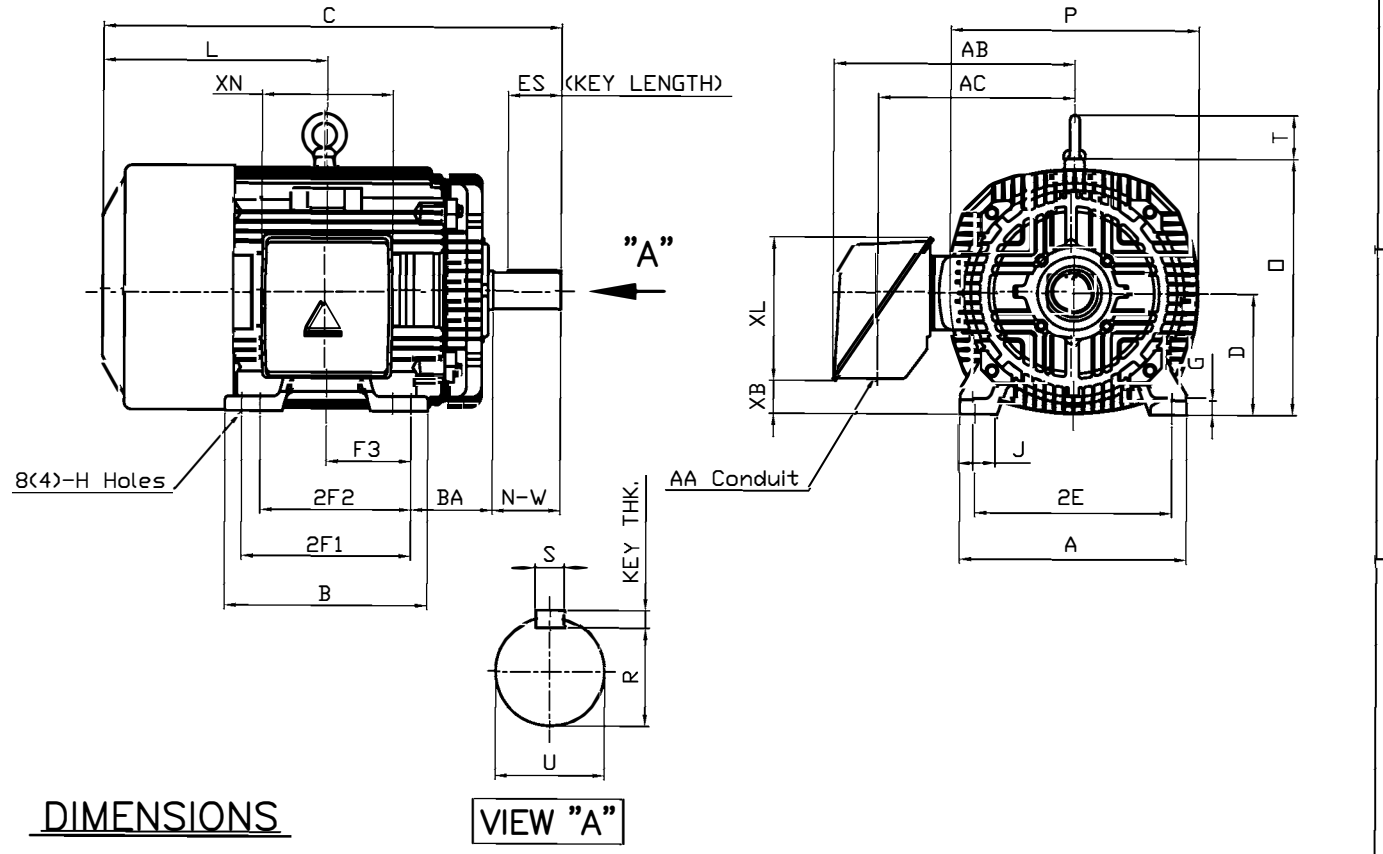
CC 038A



본 도면은 현대중공업(주) 재산이므로
허가없이 복사할 수 없음 (추첨유역)

THIS DRAWING IS PROPRIETARY TO HEECO. NO PART OF THIS DRAWING
MAYBE REPRODUCED WITHOUT THE PERMISSION OF HHI.

HYUNDAI HEAVY INDUSTRIES CO., LTD.		T E F C THREE PHASE INDUCTION MOTOR		TYPE	LP, JP Cast iron frame
FRAME SIZE	OUTPUT(HP)	POLES	Hz	TIME RATING	
405T-4,6P			60	CONT	



DIMENSIONS

VIEW "A"

M O U N T I N G									C O N D U I T B O X					APPROX. WGT.(LB)	
A	B	2E	2F1	2F2	F3	G	J	H	AA	AB	AC	XB	XL		XN
18.43	16.46	16.00	13.75	(12.25)	6.870	1.18	3.03	0.81	3.00	20.28	14.85	2.83	11.65	10.63	1110

O V E R A L L							S H A F T					KEY	BEARING	
BA	C	D	L	O	P	T	U	N- W	KEYWAY			THK.	DRIVE END	OPP. DRIVE END
									R	ES	S			
6.62	39.42	10.00	18.68	20.79	20.16	3.55	2.875	7.25	2.450	5.65	0.750	0.750	6316C3 or NU316	6313C3

NOTE

- Dimension "D" tolerance : +0.00inch - 0.03inch (143T-365T) ; +0.000inch - 0.06inch (404T-449T)
- Dimension "U" tolerance : +0.000inch - 0.005inch (143T-215T), +0.000inch - 0.001inch (254T-449T)
- Dimension "R" tolerance : +0.000inch - 0.015inch

Q'TY	DESCRIPTION	MATERIAL	DIMENSION	WEIGHT	PART NO.	REMARK	NO.
APPD BY	K.J. Kang	UNIT	INCH	SUBJECT	405T	CAD PROJ <input type="checkbox"/> FILE <input type="checkbox"/>	
Q.P CHK		SCALE	N/S				
CHKD BY		PROJEC'N	3 각법(3rd Angle)	TITLE OUTLINE			
DSND BY	N.D.Lee	DATE	2011.01.12				
HYUNDAI HEAVY INDUSTRIES CO., LTD.				REF. NO	A1116AA	Sheet No.	of
				DWG NO	350A1116AA	Revision No.	0



PERFORMANCE CURVE

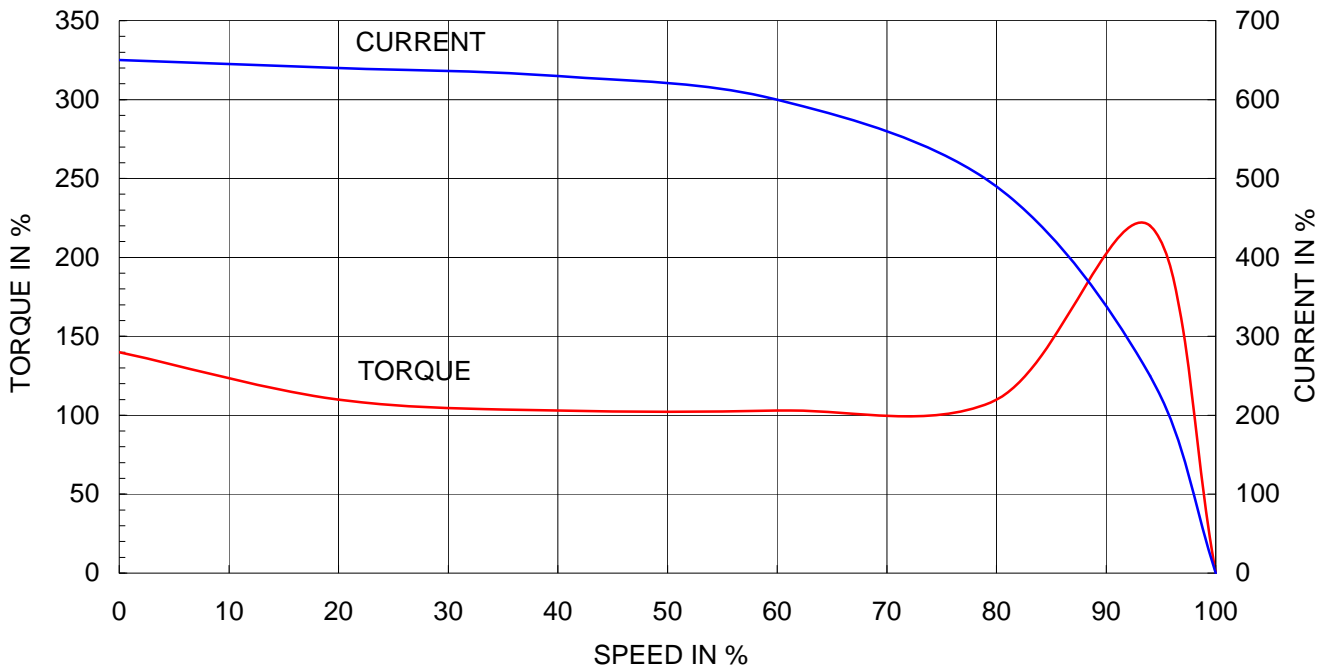
CURVE NO.

P-PLP405SR04

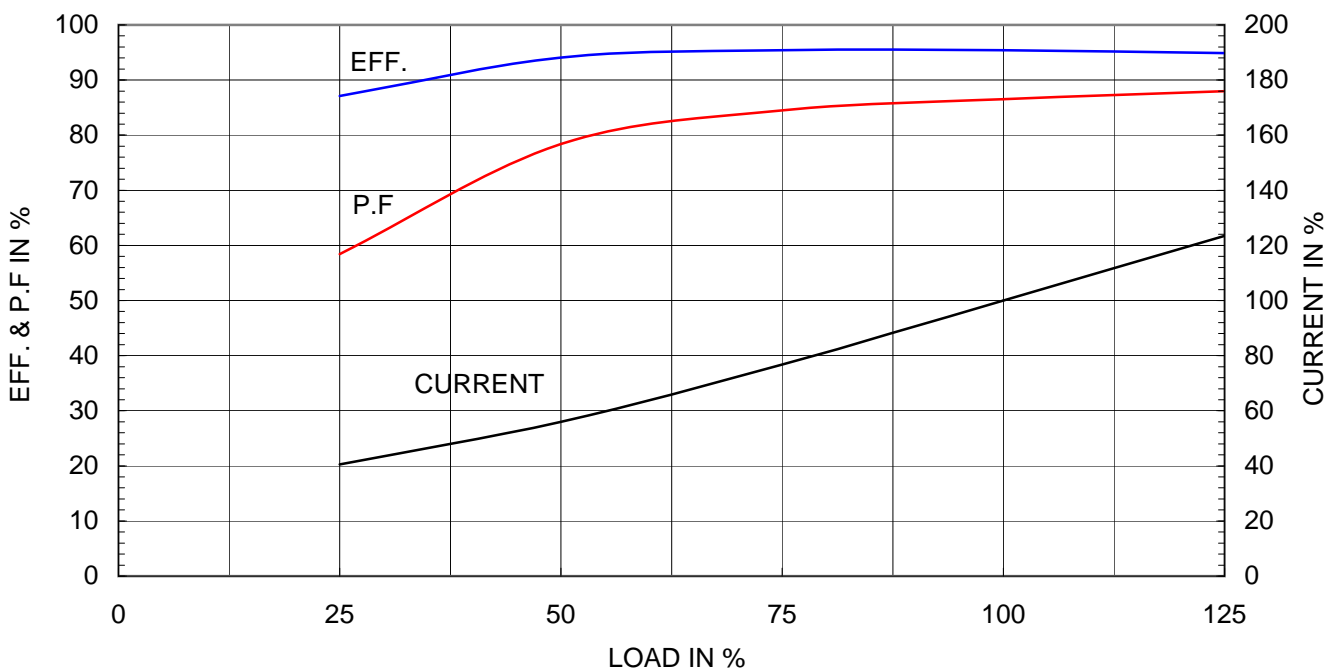
Type	:	PLP
Full Load Torque	:	296.8 lb.ft
Motor moment of Inertia (J)	:	35.910 lb.ft ²
Load moment of Inertia (J)	:	1337.213 lb.ft ²

75 kW	100 HP	60 Hz	
4 P	Rated Speed	: 1780 RPM	
Rated Voltage	575V	460V	230V
Full Load Current	91.3A	114.1A	228.1A

SPEED VS TORQUE & CURRENT CURVE



OUTPUT VS EFF., P.F & CURRENT CURVE





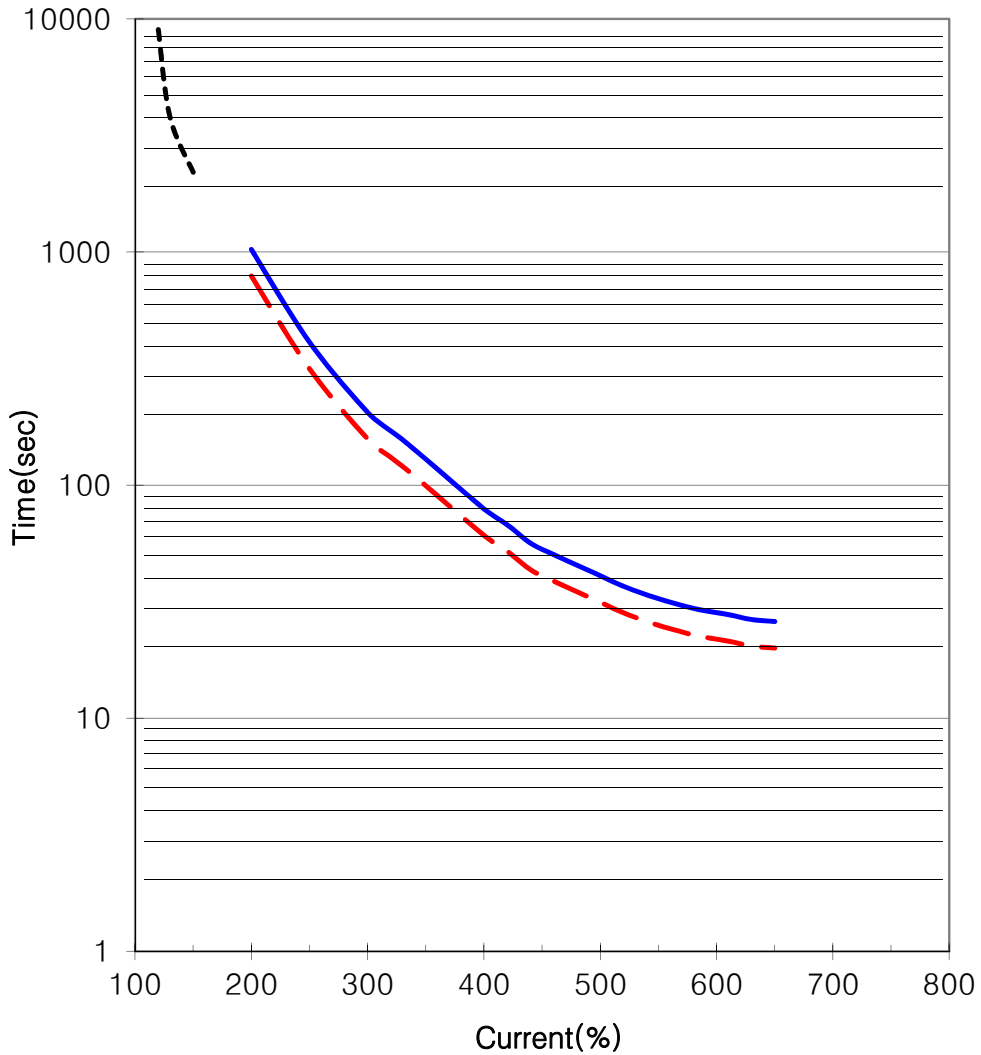
THERMAL LIMIT & TIME CURRENT CURVE

CURVE NO.

T-PLP100-18-405TBB

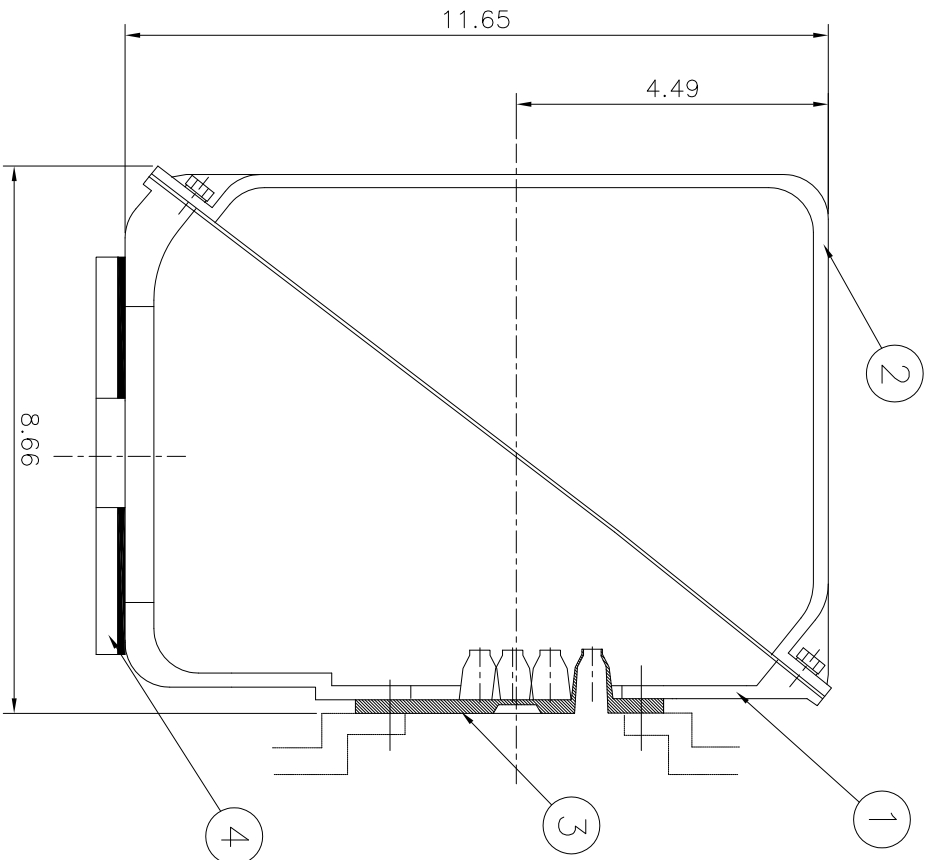
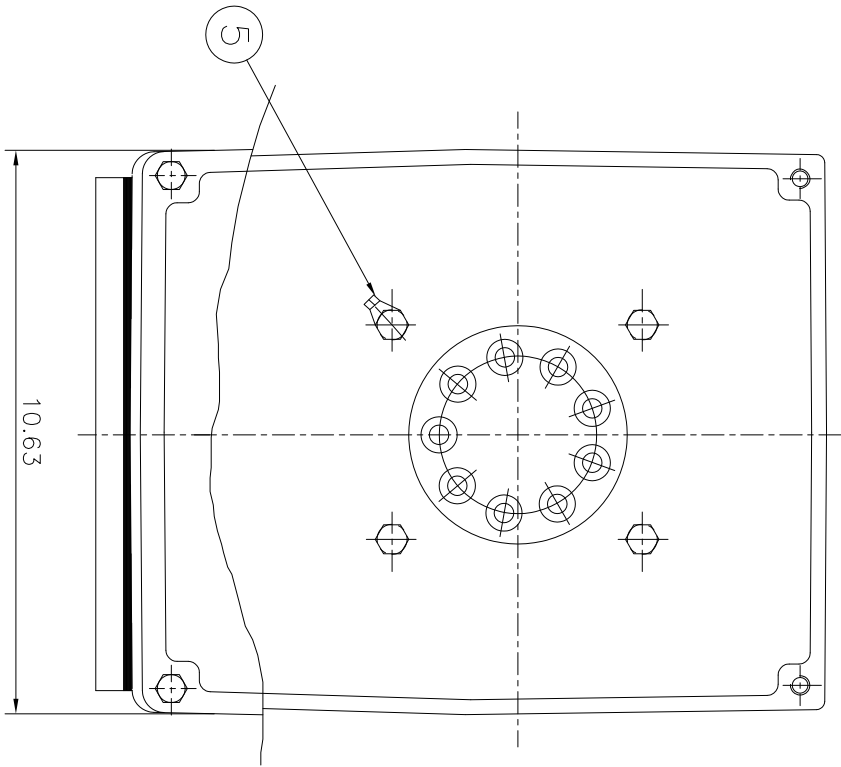
Type :	PLP100-18-405T	
FULL LOAD TORQUE :	296.8	lb.ft
J OF LOAD :	-	lb.ft ²
J OF MOTOR :	35.9	lb.ft ²

100	HP	4	P	60	Hz
RATED SPEED :		1780 rpm			
VOLTAGE		460 V	575 V		
RATED CURRENT		114.1A	91.3A		



— THERMAL LIMIT CURVE AT COLD CONDITION
- - THERMAL LIMIT CURVE AT HOT CONDITION

STARTING TIME	SAFE STALL TIME
- at rated voltage starting	20 sec. at Hot condition
- at 80% of rated voltage starting	26 sec. at Cold condition



▽	SOS
▽▽	12.5S
▽▽▽	3.2S
▽▽▽▽	0.4S

REV	DATE	REV'D BY	CHK'D BY	CHK'D BY	APP'D BY	250-	±0.1	±0.2	±0.3	±0.5	±0.8	±0.1	±0.2	±0.3	±0.5	±0.8	±1.2	±2.0	±3.0
1						1-4	6-30	4-18	18-63	63-250	1000-	30-120	120-315	315-1000					
CONTENTS																			

1	EARTH TERMINAL LUG																				
1	CABLE ENTRY PLATE																				
1	GASKET	NBR																			
1	TERMINAL BOX COVER	CAST IRON																			
1	TERMINAL BOX BODY	CAST IRON																			
Q'TY	DESCRIPTION	MATERIAL	DIMENSION	WEIGHT	PART NO.	REMARK															
APP'D BY	KANG KEONG JUNG	UNIT	INCH	Non Scale																	
CHK'D BY	KIM JIN HONG	SCALE																			
CHK'D BY	KIM OK JIN	PROJEC'N	3차 (3rd Angle)																		
DSND BY	KIM RYANG GYU	DATE	2011-10-21																		
TITLE		SUBJECT		WEIGHT		PART NO.		REMARK		NO.		DWG SIZE		NO.							
Main Terminal Box Assembly		NEMA 400, 440										A3 (1:1)									
REF. NO	DWG NO	3M-016882	Sheet No.	of	0	Revision No.		0													



Main Terminal Box Assembly

3M-016882
Sheet No. of 0
Revision No. 0