

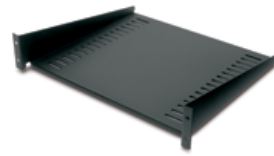
Shelves and mounting hardware

Mounting accessories to aid in the installation of IT equipment and secure racks into position

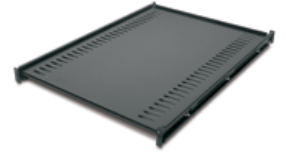
Shelving

Fixed and sliding shelves to enable the mounting of tower units, monitors, and other equipment into the rack environment.

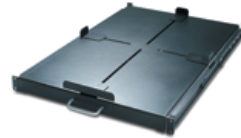
- **AR8105BLK** — Fixed shelf 22.7 kg (50 lb.)
- **AR8122BLK** — Fixed shelf 114 kg (250 lb.)
- **AR8123BLK** — Sliding shelf 45.5 kg (100 lb.)
- **AR8128BLK** — Sliding shelf 91 kg (200 lb.)
- **AR8422** — Double side fixed shelf for two-post rack
- **AR8126ABLK** — 17 in. sliding keyboard shelf
- **AR8127BLK** — 19 in. sliding rotating keyboard shelf
- **AR8006A** — Misc. equipment support rails for 600 mm (24 in) wide enclosure



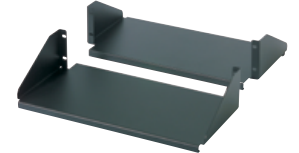
AR8105BLK



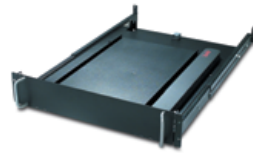
AR8122BLK



AR8128BLK



AR8422



AR8126ABLK/AR8127BLK



AR8006A

Bolt-down and stabilization

Stabilization plates and hardware to prevent tip-over in stand-alone rack applications and meet specific anchoring requirements.

- **AR7701** — NetShelter SX bolt-down kit — meets IBC® seismic requirements for moderate seismic zones
- **AR7700** — NetShelter SX stabilization plate to prevent tipping when sliding out equipment



AR7701



AR7700

Miscellaneous mounting brackets

Variety of mounting brackets for mounting IT equipment.

- **AR7711** — Zero-U multipurpose accessory mounting bracket for side mounting of 1U/2U products and rack PDUs
- **AR8150BLK** — 23 to 19 in. mounting adapter brackets for use with AR7510 23 in. EIA mounting rails



AR7711

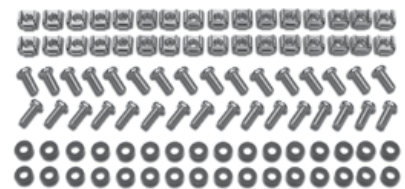


AR8150BLK

Hardware kits

Available for additional hardware needs or to accommodate equipment mounted in varying mounting options.

- **AR8100** — M6 cage nuts and screws, qty. 32
- **AR8400** — #12-24 screws, qty. 100
- **AR8005** — #10-32 cage nuts, qty. 36



AR8100