



**THE DATASHEET OF
PD9001GR/AC**



Power Matters.

OEM PoE Midspan Products



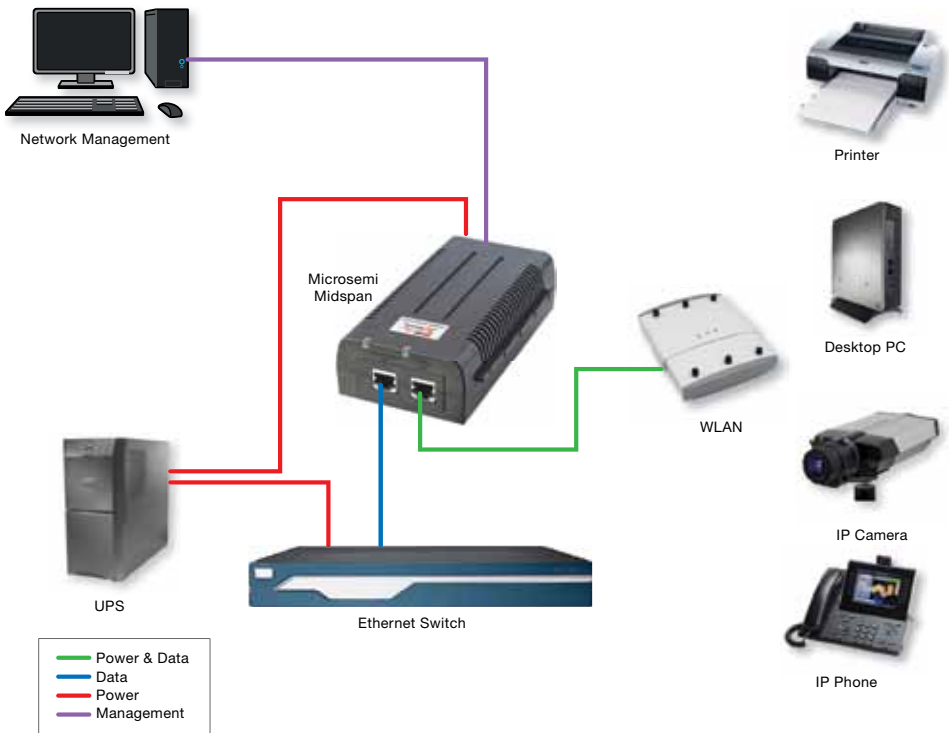
Single & Multiport Midspans

Accessories

Splitters & Adapters

Management Software

How will you



power that?

Microsemi PoE Midspans

Providing easy, low-cost power over new and existing Ethernet infrastructure

PoE Systems from Microsemi® enable delivery of up to 95 watts of scalable, energy efficient Power over Ethernet (PoE) to IP phones, WLAN access points, IP cameras, thin clients and other Ethernet devices using existing CAT-5 or better cabling. Microsemi midspans leverage Ethernet infrastructure to deliver PoE technology; eliminating the need to install separate AC power cabling, or replace existing Ethernet switches.

The exclusive PowerView Pro network management system (SNMPv3) allows remote management and reboot of end-terminals. Microsemi is a major source of the 802.3af and 802.3at and upcoming HDBaseT standards, and the leader in providing high power PoE business communication solutions.

Microsemi midspans now comply with the Power over HDbaseT (PoH) standard delivering up to 60W per port, while also being backwards compatible with IEEE3802.3at type 1 and type 2 compliant products.

The PoH standard includes options to deliver up to 95W per port.

Midspans for Indoor Installations



PD-3501/3501G Midspan

This single port midspan offers a solution for security network and other low port density IP Terminal installations.

- Provides 15.4W
- IEEE802.3af compliant
- 10/100/1000Mbps* data transfer rates
- PoH type 1



PD-9001GR Midspan

This 30W single port midspan provides a high-power solution for remote powering of current and emerging high power applications including 802.11 access points, pan-tilt-zoom cameras, video-phones and WiMAX access points.

- Provides 30W
- 10/100/1000Mbps data transfer rates
- IEEE802.3at compliant
- PoH type 1, PoE+ including 2-event, PoH type 2



PD-9001G-40 Midspan

This 40W single port midspan provides a high-power solution for remote powering of current and emerging high power applications including 802.11 access points, pan-tilt-zoom cameras, video-phones and WiMAX access points.

- Provides 40W
- 10/100/1000Mbps data transfer rates
- IEEE802.3at compliant
- PoH type 1, PoE+ including 2-event, PoH type 2



PD-3504G Midspan

This 4 port midspan offers a solution for IP telephones, wireless LAN access points, security network cameras and IP terminals.

- 4 ports
- IEEE802.3af compliant
- Provides 15.4W per port
- 10/100/1000Mbps data transfer rates
- PoH type 1

* Gigabit rates in G models only



PD-9004G Midspan

This 4 port midspan offers a solution for wireless LAN access points, security network cameras and IP terminals.

- Provides 30W
- 10/100/1000Mbps data transfer rates
- IEEE802.3at compliant
- PoH type 1, PoE+ including 2-event, PoH type 2



PD-9501G Midspans

This 60W single port, high power midspan enables remote powering of current and emerging high power applications including remote distance wireless IEEE802.11n access points, pan-tilt-zoom cameras, video-phones, access control, thin clients and POS.

- Provides 60W
- 10/100/1000Mbps data transfer rates
- IEEE802.3at compliant
- PoH type 1, PoE+ including 2-event, PoH type 2



PD-9601G Midspan

This 95W single port, high power midspan is designed to power wireless and cellular base stations, pan-tilt-zoom and dome cameras, physical access control with door locks, televisions and interactive displays, point-of-sale and information kiosks, thin clients and other high power end terminals. "SP" model includes surge protection.

- Provides up to 95W over 4-pairs
- 10/100/1000Mbps data transfer rates
- PoH, IEEE802.3at and 802.3af compliant



PD-3500/3500G Midspan**

This multiport midspan allows IP telephones, wireless LAN access points, security network cameras and IP terminals to receive power over standard Ethernet cables, leaving network infrastructure completely unaltered.

- 6/12/24 ports
- Provides 15.4W per port
- IEEE802.3af compliant
- 10/100/1000Mbps data transfer rates*
- PoH type 1

* Gigabit rates in G models only

** Rackmountable



PD-6500/6500G Midspan**

The remote management enabled 6500 midspans allow IP telephones, wireless LAN access points, IP cameras and many other types of data terminals to receive power, along with data, over standard Ethernet cables, leaving network infrastructure completely unaltered.

- 6/12/24 ports
- Remote power management
- Provides 15.4W per port
- 10/100/1000Mbps data transfer rates*
- IEEE802.3af compliant
- PoH type 1



PD-9000G Midspan**

The high power, remote management enabled 9000G midspans are designed specifically to power IEEE802.11n and 802.3at access points, pan-tilt-zoom and dome network cameras, video phones, thin clients, POS systems and other end terminals.

- 6/12/24 ports
- Provides 36W per port
- 10/100/1000Mbps data transfer rates
- IEEE802.3at compliant
- Remote power management
- PoH type 1, PoE+ including 2-event, PoH type 2



PD-9500G Midspan**

The high power, remote management enabled power IEEE802.11n and 802.3at access points, pan-tilt-zoom and dome network cameras, video-phones, thin clients, POS systems and other end terminals.

- 6/12/24 ports
- Provides 60W per port
- 10/100/1000Mbps data transfer rates
- IEEE802.3at compliant
- Remote power management
- High power over 4-pairs
- PoH type 1, PoE+ including 2-event, PoH twin type 2 (4-pairs)

* Gigabit rates in G models only

** Rackmountable

Midspans for Outdoor Installations



PD-9001GO and 9501GO

- PD-9001GO: 30W
PD-9501GO: 60W
- Outdoor midspan for outdoor devices
- Outdoor rated: IP66
- Extended temperature range
PD-9001GO: -40°C, +65°C
PD-9501GO: -40°C, +50°C
- Fully IEEE802.3at standard compliant
- Supports 10/100/1000Mbps data rate
- Plug 'n Play installation (installer does not have to open unit)
- Supports both 802.3af and 802.3at powered devices
- Includes integral surge protection
- AC power input

Outdoor mounting bracket for PD-9001G / PD-9501G



PowerDsine PD-OUT/MBK Kit

PD-9001G-40/SP & PD-9501G-SP



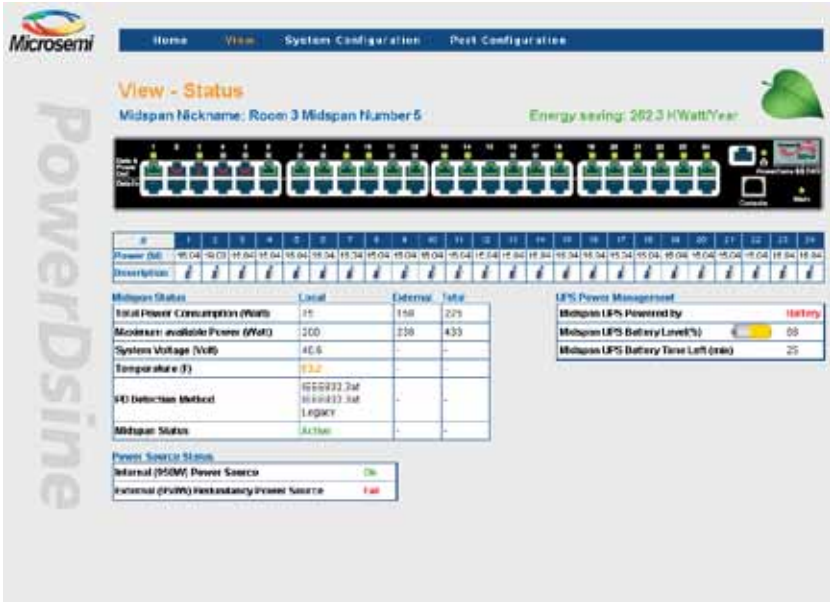
- Indoor midspan for outdoor devices
- PD-9001G-40/SP: Up to 40W
PD-9501G-SP: Up to 60W
- IEEE 802.3at compliant with 2-event classification
- IEEE 802.3af backward compatible
- Surge protection according to GR 1089
- Safe and reliable power to WLAN access points
- Supports 10/100/1000Base-T applications
- Compact design with 1U height
- Supports 10/100/1000Mbps data rates
- AC power input

* Gigabit rates in G models only

** Rackmountable

PowerView Pro Management

Highly secure Web-based/SNMP Remote Network Management System



- SNMPv3 and web-based management
- Supports both IPv4 and IPv6 addressing
- Comes standard in PD-6500 and PD-9500 families*
- Optional feature in PD-9000 family*
- Monitors statistics, usage, and availability
- Monitors battery life in UPS and manages flow to critical and non-critical devices
- Allows devices to be remotely rebooted
- Schedules on/off in periods of non-use as well as reboots to increase network efficiency and uptime

* Multiport devices only

Accessories

Family	Product Number	Description
 <p>Redundant Power Supply</p>	PD-RPS-450	450W redundant power supply, 19", 1U, supports the PD-9006G/ACDC/M, PD-9012G/ACDC/M, PD-9024G/ACDC/M, and 9506G/ACDC/M
	PD-RPS-1000	1000W redundant power supply, 19", 1U, supports the PD-9024G/ACDC/M/F, 9512G/ACDC/M and 9524G/ACDC/M
	PD-RPS-Cable	Spare set of cables (DC & communication) for the 9000G and 9500G midspans
 <p>802.3af Active Splitter</p>	PD-AS-601/5	Power conversion from 48V to 5V output, 2 x DC jacks: round 3.4x1.35mm and 5.5x2.5mm
	PD-AS-601/12	Power conversion from 48V to 12V output, 2 x DC jacks: round 3.4x1.35mm and 5.5x2.5mm
 <p>802.3at Active Splitter</p>	PD-AS-701/12	Power conversion from 48V to 12V output, 2 pairs, for use with PD-9000G family
	PD-AS-701/18	Power conversion from 48V to 18V output, 2 pairs, for use with PD-9000G family
	PD-AS-701/24	Power conversion from 48V to 24V output, 2 pairs, for use with PD-9000G family
	PD-AS-951/12-24	Power conversion from 48V to 12V or 24V DC output (user selectable), 4 pairs, for use with PD-9500G family
	PD-AS-951/12-24/C	Power conversion from 48V to 12V or 24V DC output (user selectable), 4 pairs with open DC wires, for use with PD-9500G family
 <p>PoE Extender</p>	PD-PoE Extender	1-port, extends PoE range by additional 100m, 802.af/802.at output power

Midspan Selection Guide

Indoor Midspans

Watts per Port	Product Number	Number of Ports	Remotely Managed	Gigabit	Input	Other
15.4W	PD-3501G/AC	1		X	AC	
15.4W	PD-3504G/AC	4		X	AC	
15.4W	PD-3506/AC	6			AC	
15.4W	PD-3506G/AC	6		X	AC	
15.4W	PD-3512AC	12			AC	
15.4W	PD-3512G/AC	12		X	AC	
15.4W	PD-3524/AC	24			AC	200W total power
15.4W	PD-3524G/AC	24		X	AC	200W total power
15.4W	PD-3524G/AC/F	24		X	AC	400W total power
30W	PD-5524G/ACDC/M	24	X	X	AC & DC	450W total power
15.4W	PD-6506/AC/M	6	X		AC	
15.4W	PD-6506G/AC/M	6	X	X	AC	
15.4W	PD-6512/AC/M	12	X		AC	
15.4W	PD-6512G/AC/M	12	X	X	AC	
15.4W	PD-6524/AC/M	24	X		AC	200W total power
15.4W	PD-6524G/AC/M	24	X	X	AC	200W total power
15.4W	PD-6524/AC/M/F	24	X		AC	400W total power
15.4W	PD-6524G/AC/M/F	24	X	X	AC	400W total power
30W	PD-9001GR/AC	1		X	AC	
30W	PD-9004G/AC	4		X	AC	
36W	PD-9006G/ACDC/M	6	X	X	AC & DC	
36W	PD-9012G/AC	12		X	AC	
36W	PD-9012G/ACDC/M	12	X	X	AC & DC	
36W	PD-9024G/AC	24		X	AC	450W total power
36W	PD-9024G/ACDC/M	24	X	X	AC & DC	450W total power
36W	PD-9024G/DC/M	24	X	X	DC	
36W	PD-9024G/AC/F	24		X	AC	1000W total power
36W	PD-9024G/ACDC/M/F	24	X	X	AC & DC	1000W total power
72W	PD-9501G/AC	1		X	AC	
72W	PD-9506G/ACDC/M	6	X	X	AC & DC	
72W	PD-9512G/ACDC/M	12	X	X	AC & DC	
95W	PD-9601G/ACDC/M	1	X	X	AC & DC	

Midspans for Outdoor Installations

Watts Per Port	Product Number	Number of Ports	Remotely Managed	Gigabit	Input	Other
30W	PD-9001GO	1		X	AC	Outdoor deployment
40W	PD-9001G-40/SP/AC	1		X	AC	Indoor deployment
72W	PD-9501G-SP/AC	1		X	AC	
60W	PD-9501GO/AC	1		X	AC	Outdoor deployment



Microsemi

Microsemi Corporate Headquarters
One Enterprise, Aliso Viejo, CA 92656
Within the USA: 800.713.4113
Outside the USA: Phone: 949.380.6100
Fax: 949.215.4996 · www.microsemi.com

Microsemi Corporation (NASDAQ: MSCC) offers a comprehensive portfolio of semiconductor solutions for: aerospace, defense and security; enterprise and communications; and industrial and alternative energy markets. Products include high-performance, high-reliability analog and RF devices, mixed signal and RF integrated circuits, customizable SoCs, FPGAs, and complete subsystems. Microsemi is headquartered in Aliso Viejo, Calif.

© 2012 Microsemi Corporation. All rights reserved. Microsemi and the Microsemi logo are trademarks of Microsemi Corporation. All other trademarks and service marks are the property of their respective owners.