



PCDS Meeting

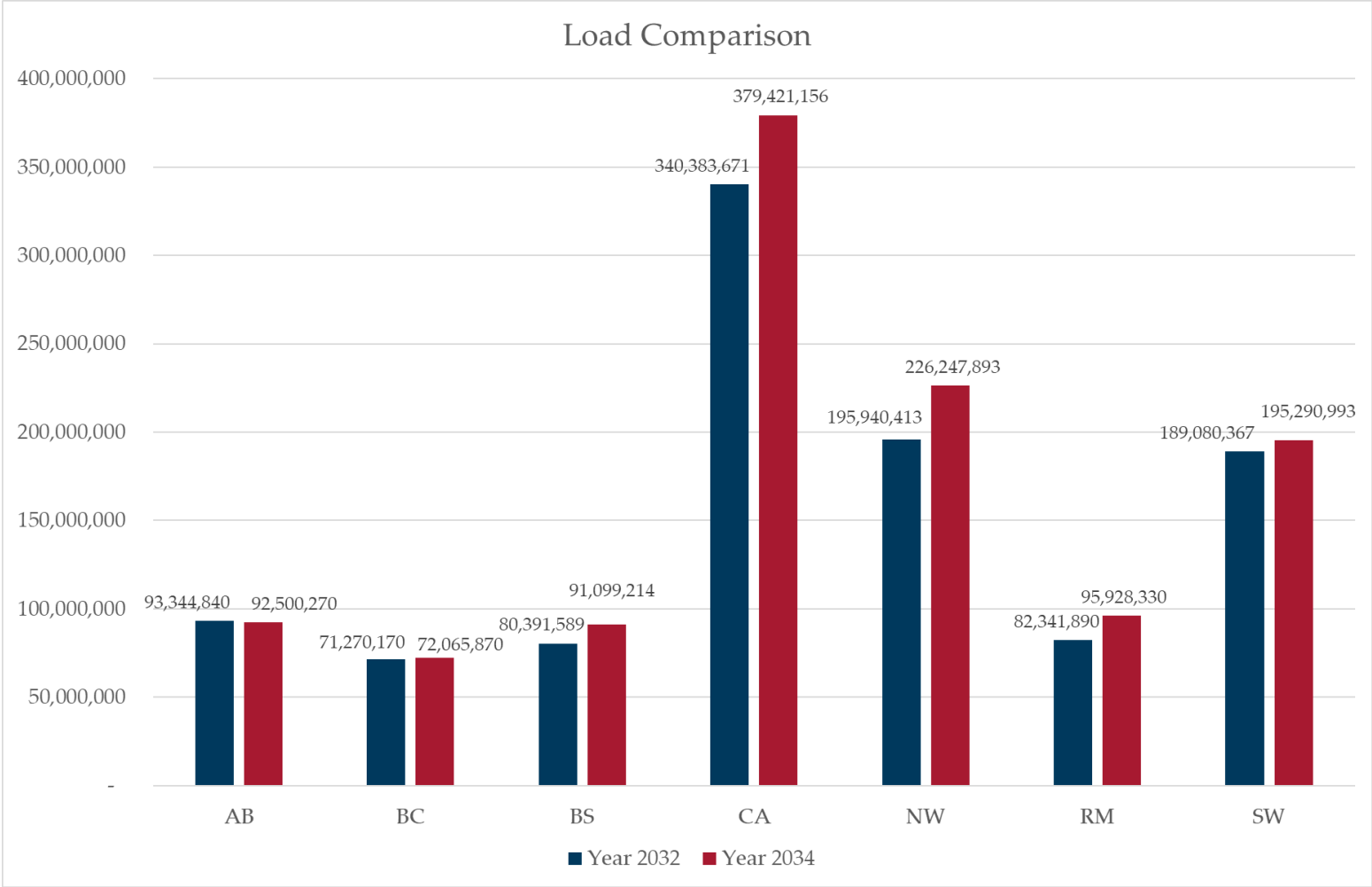
March 27, 2024

Jon Jensen
WECC Staff

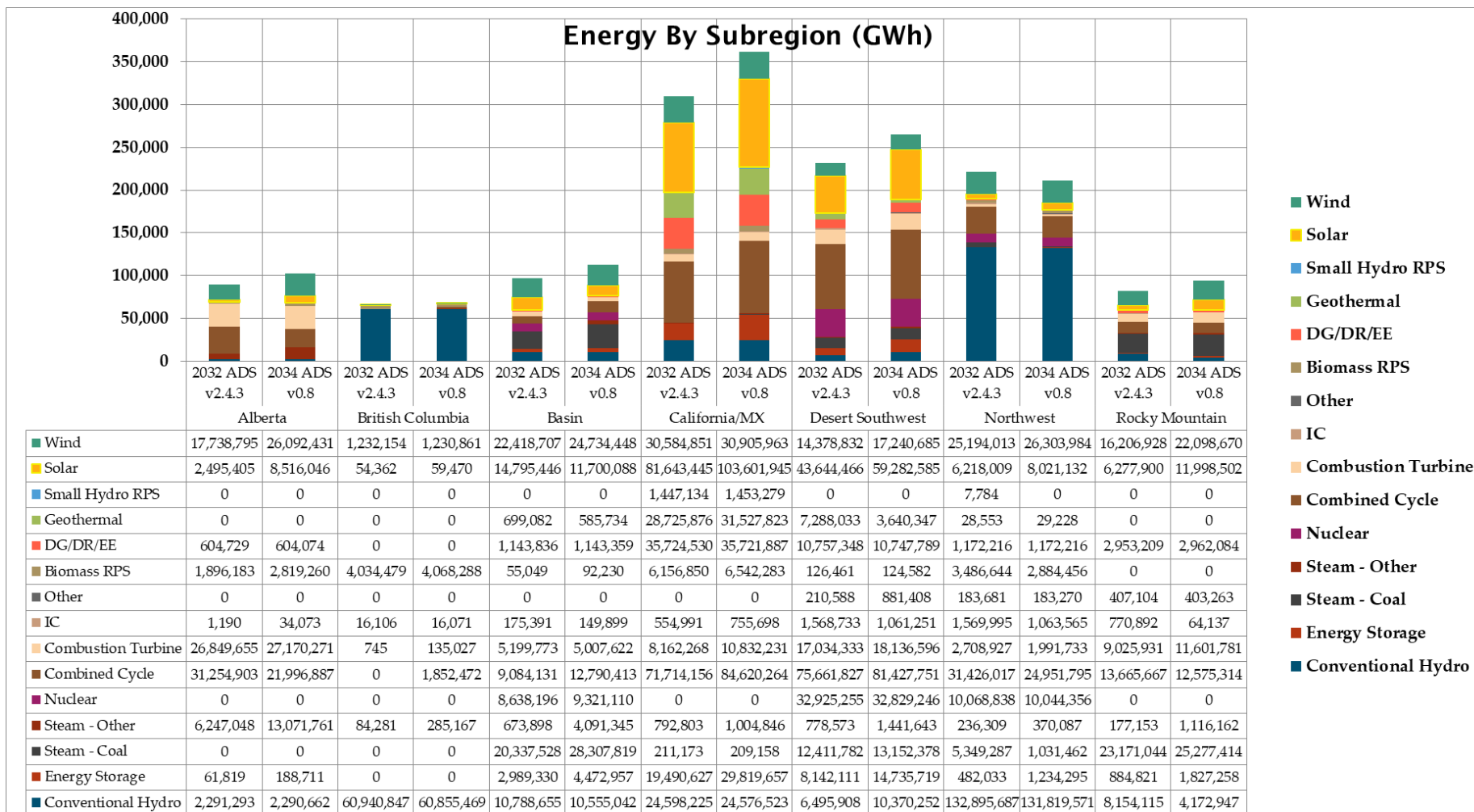
Announcements

- 2034 ADS PCM V1 — Ready to post, waiting on website
- Wind/Solar CF
- BTM PV — Received the county information from PNNL, now sent to NREL for BTM PV ratios/weightings for each bus
- 2034 L&R Update

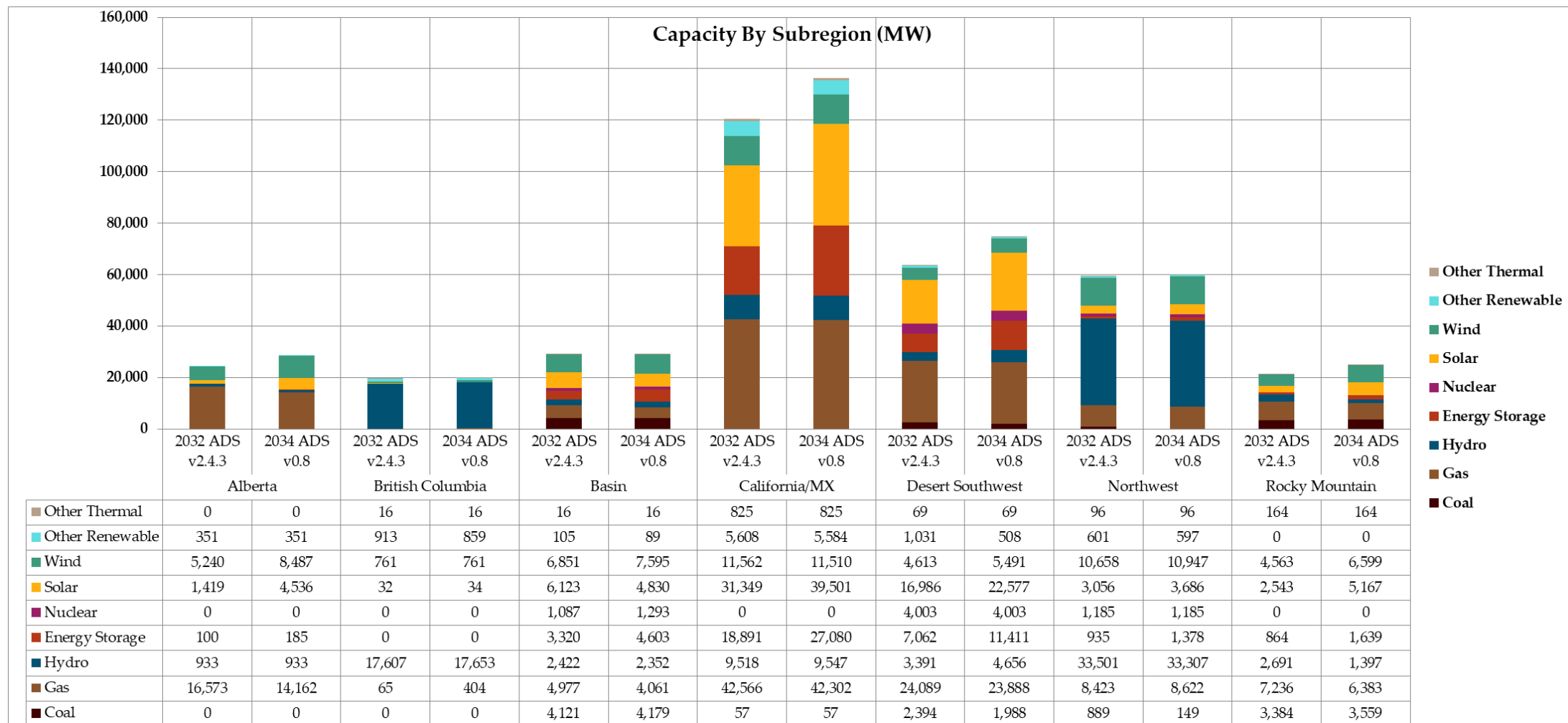
Loads by Region



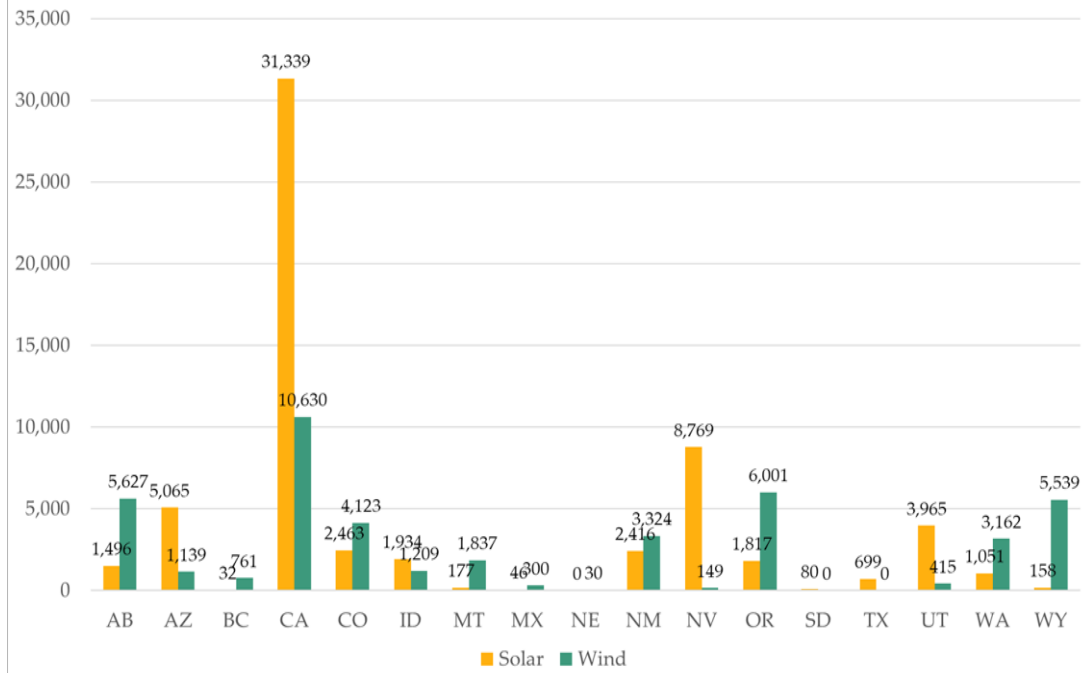
Energy



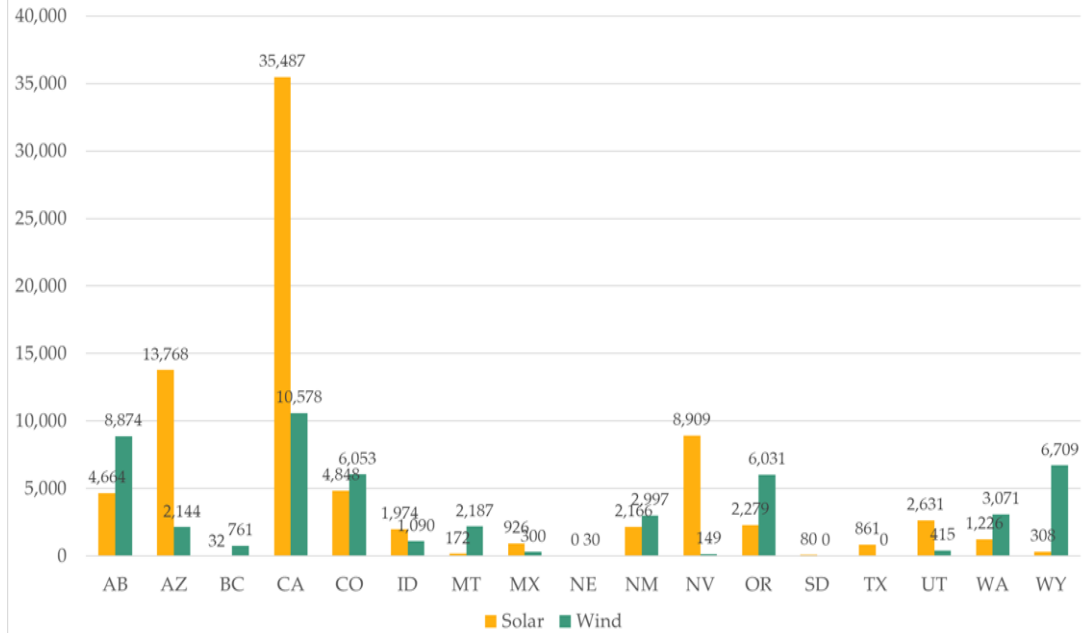
Capacity



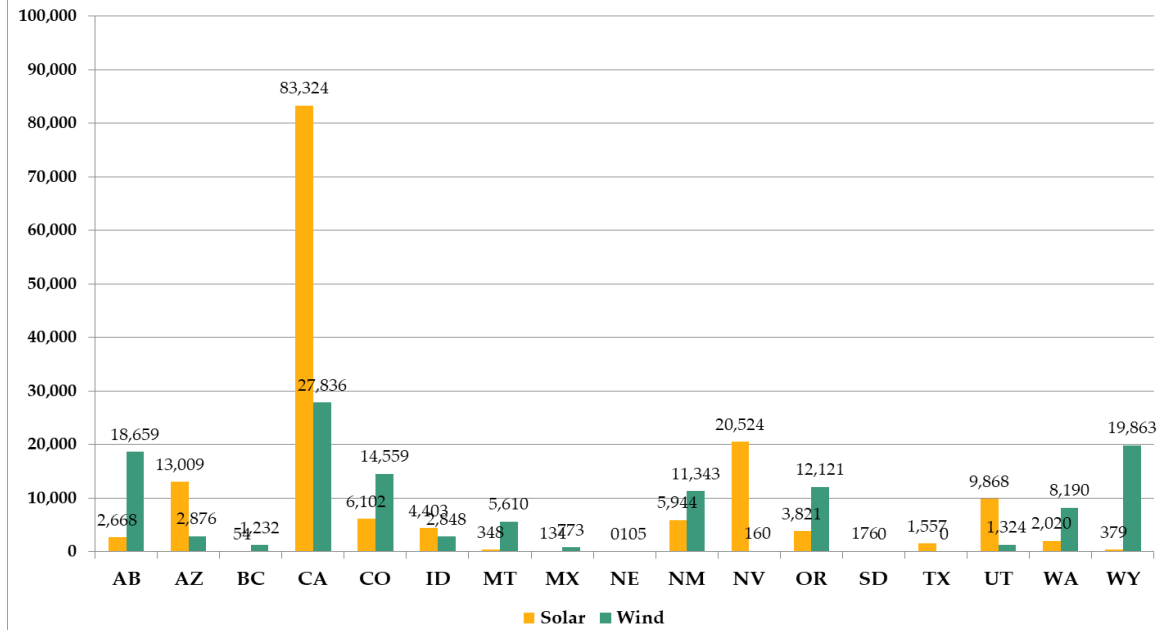
2032 ADS v2.4.3 Capacity (MW)



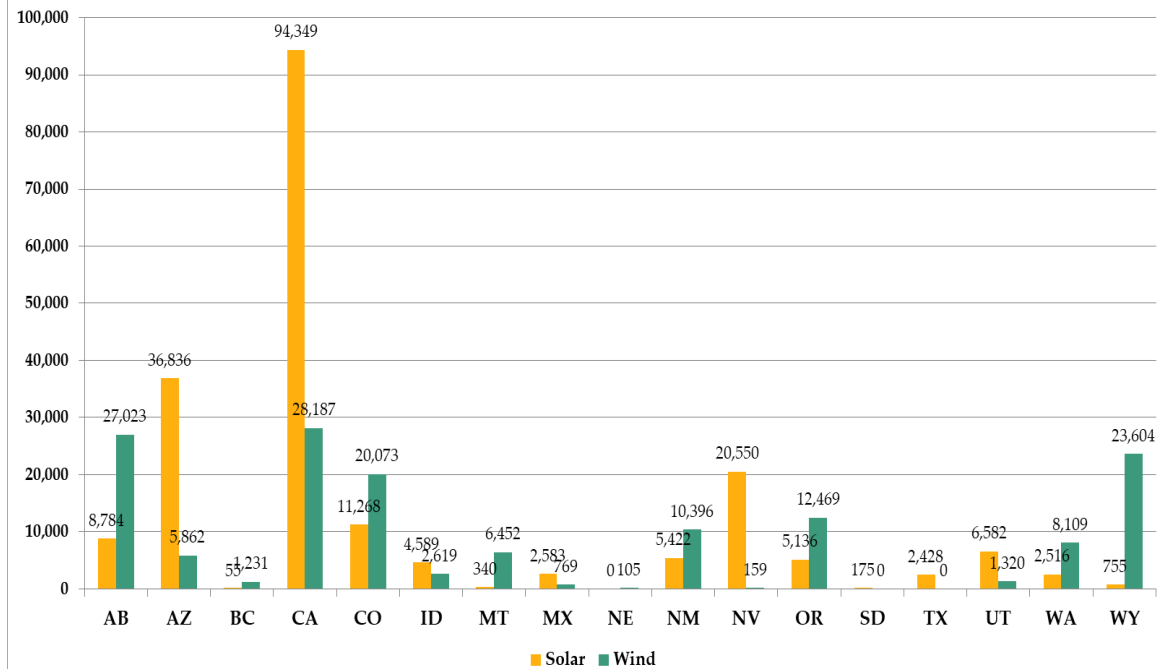
2034 ADS v0.8 Capacity (MW)



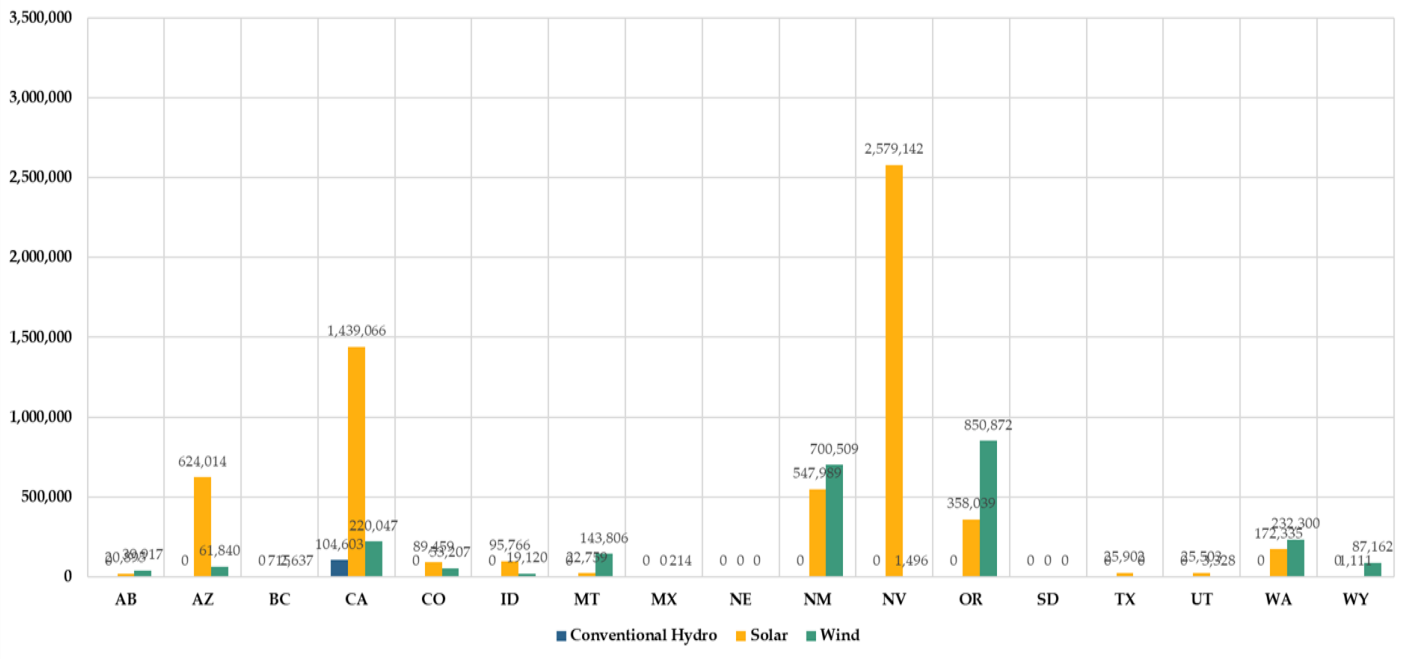
Annual Generation (GWh) by State and Fuel - 2032 ADS v2.4.1



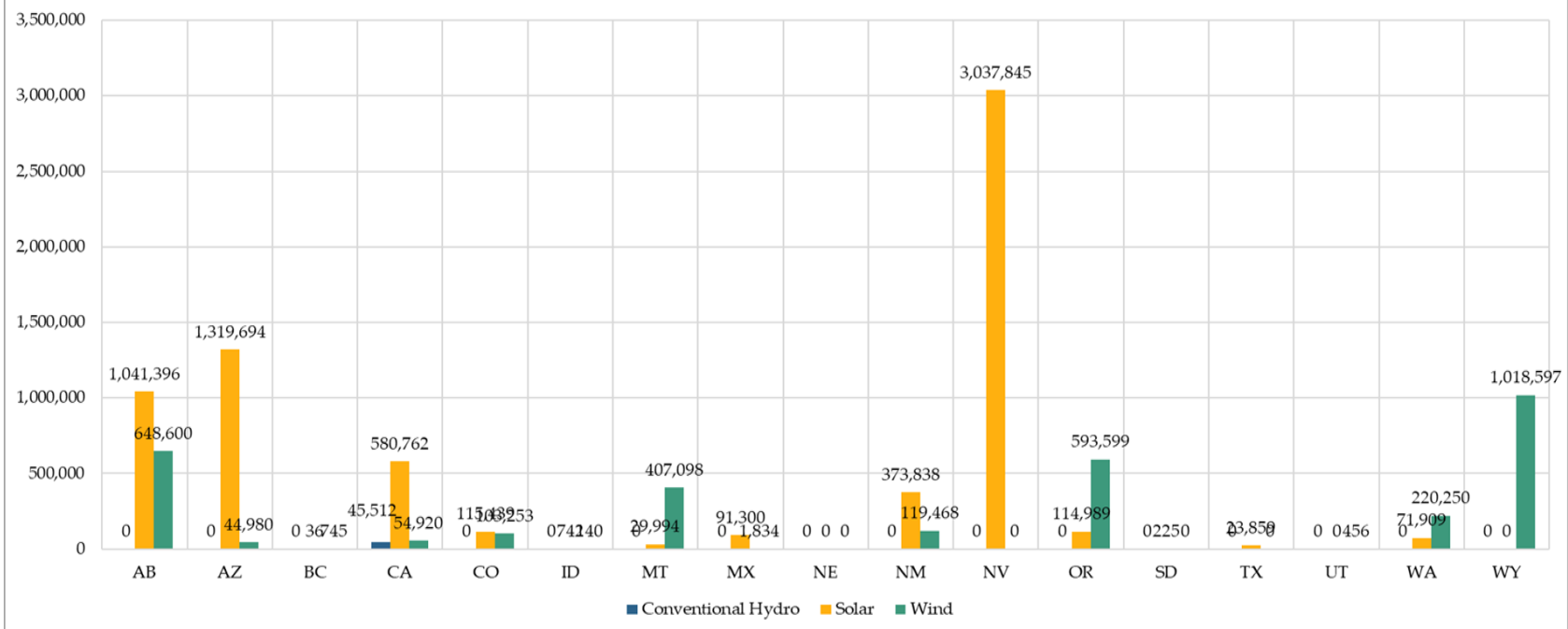
Annual Generation (GWh) by State and Fuel - 2034 ADS v0.8



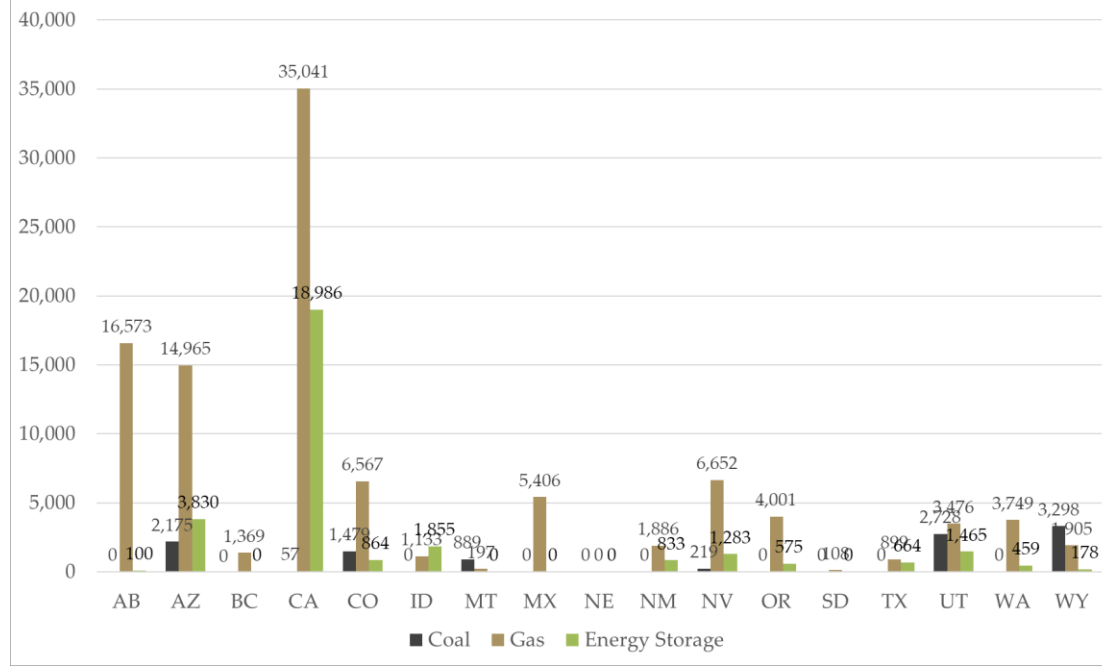
Annual Dumped Generation (MWh) by State and Type - 2032 ADS v2.4.3



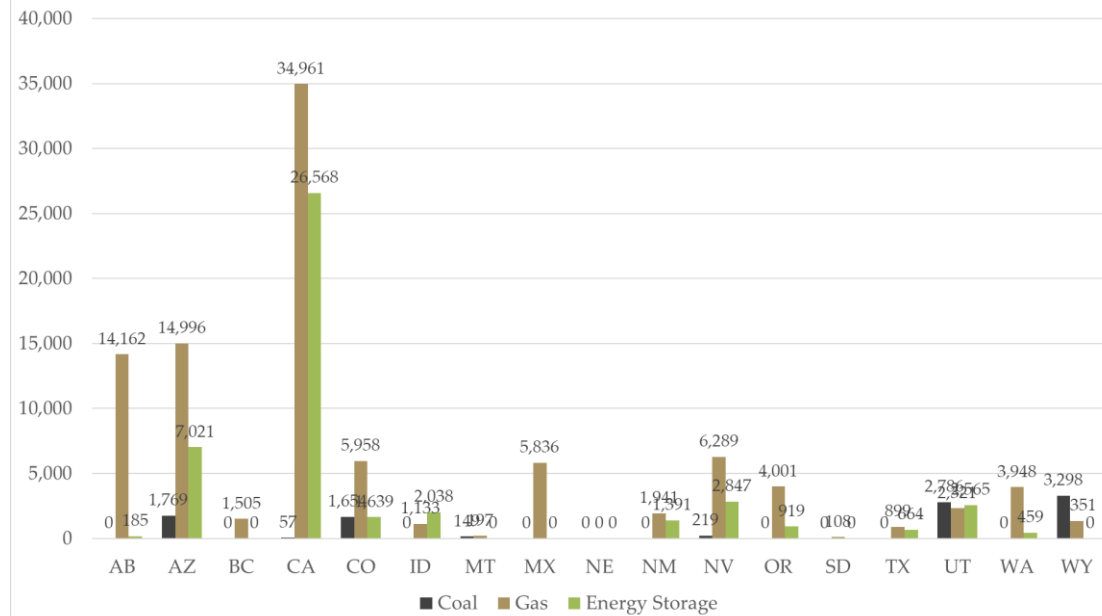
Annual Dumped Generation (MWh) by State and Type - 2034 ADS v0.8



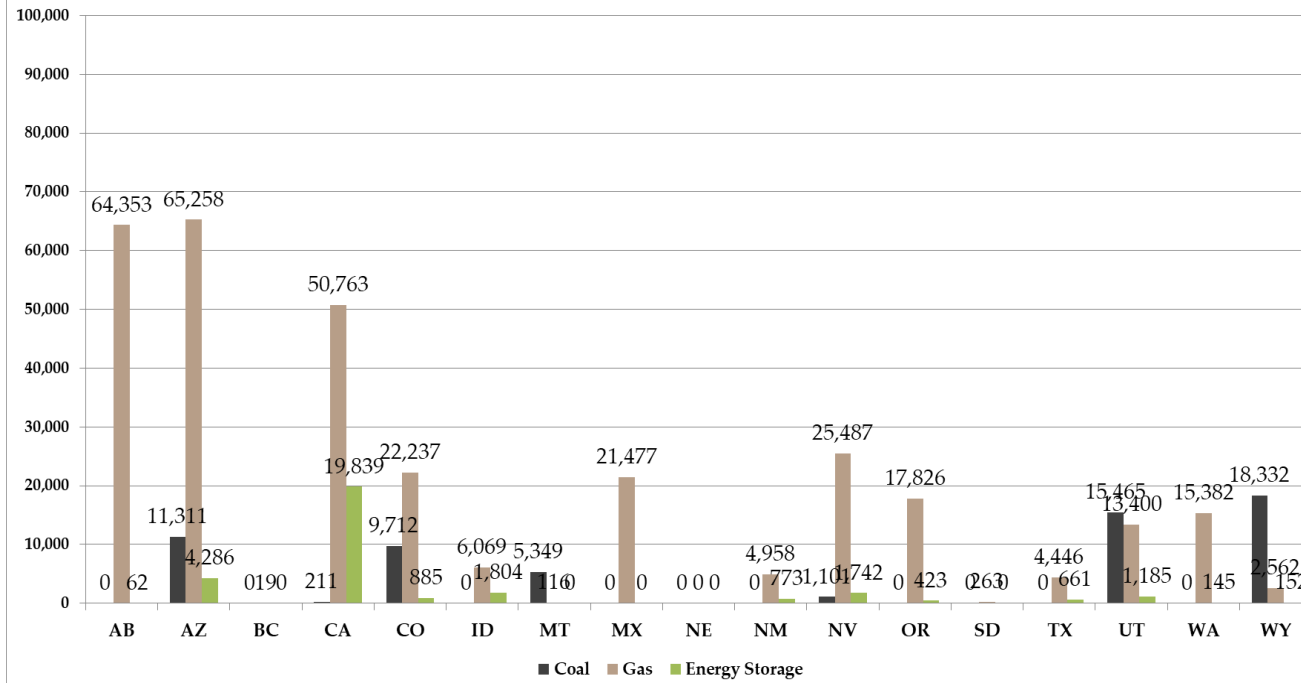
2032 ADS v2.4.3 Capacity (MW)



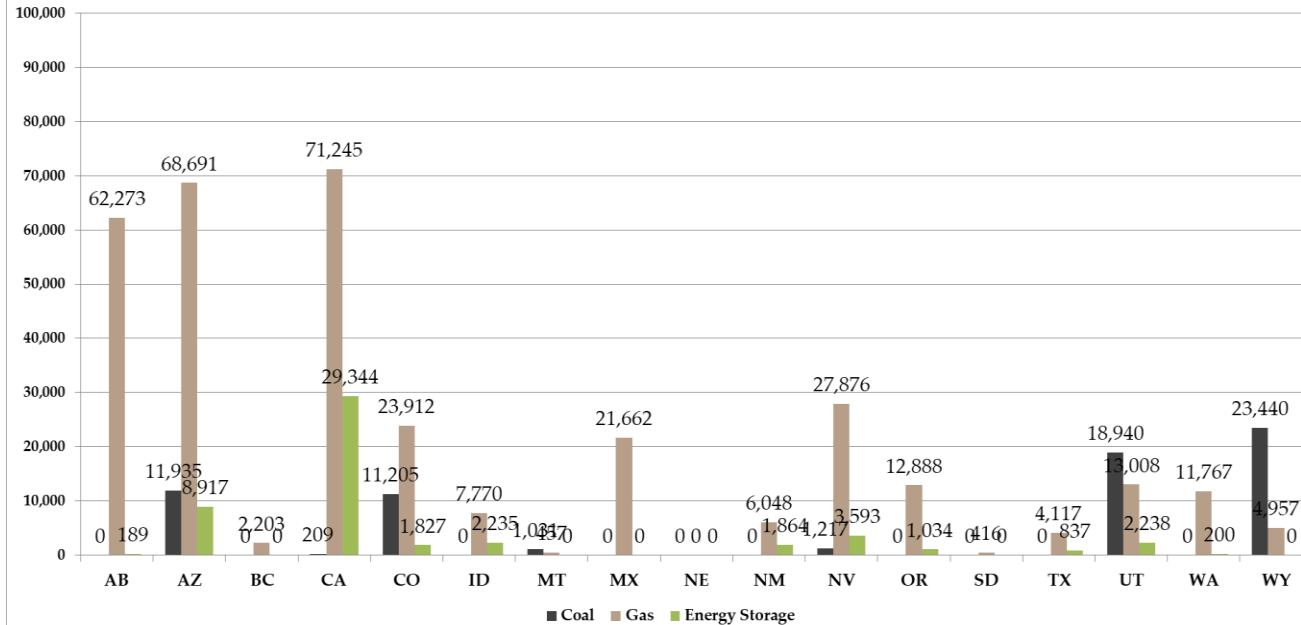
2034 ADS v0.8 Capacity (MW)



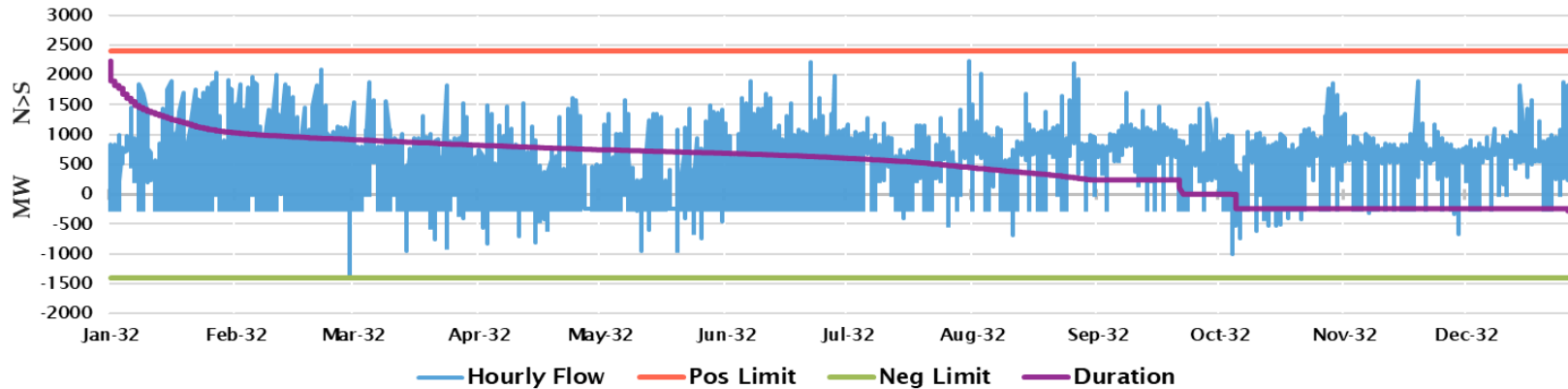
Annual Generation (GWh) by State and Fuel - 2032 ADS v2.4.1



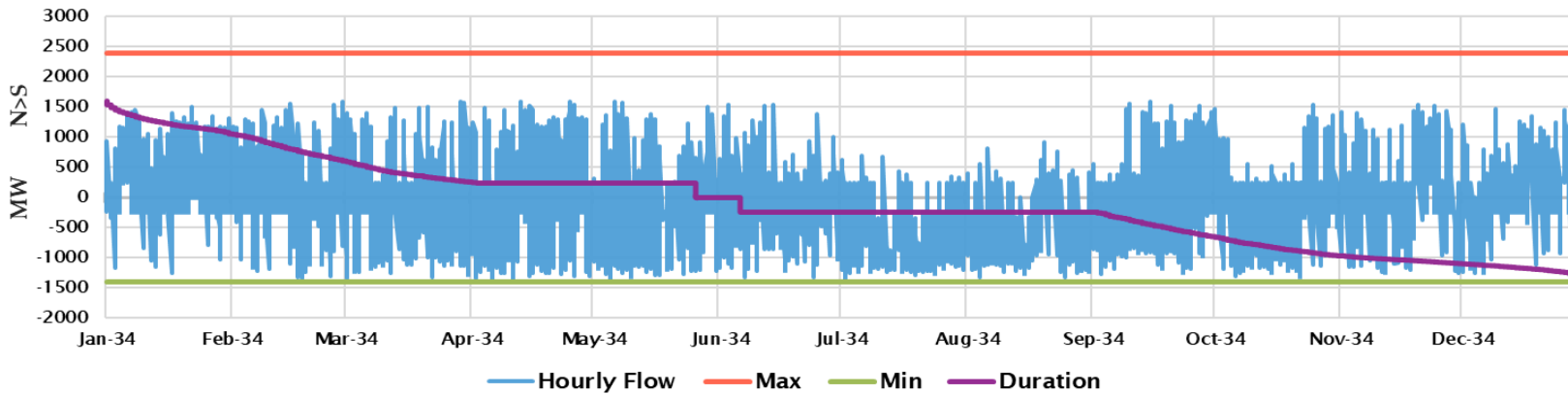
Annual Generation (GWh) by State and Fuel - 2034 ADS v0.8



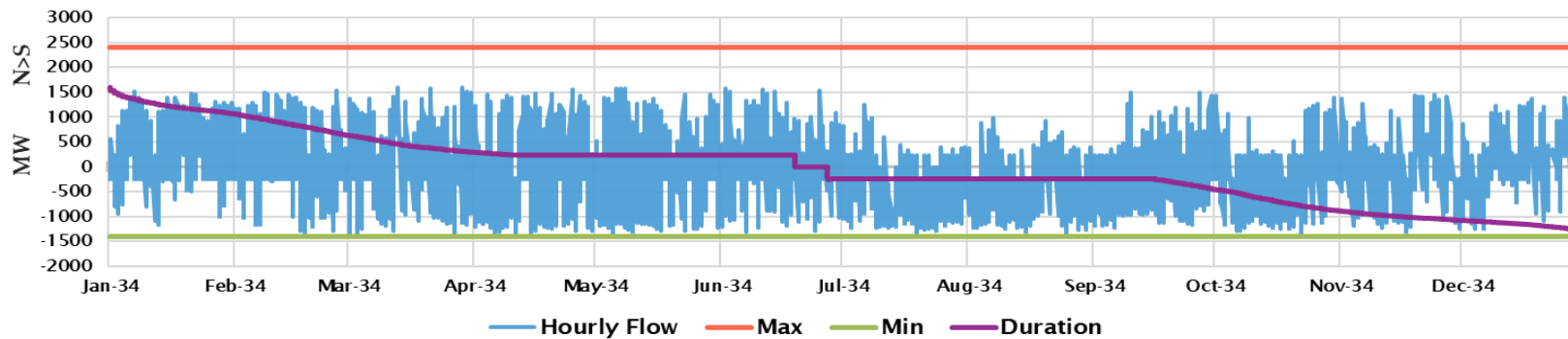
P27 Intermountain Power Project DC Line - 2032ADsv2.4.3 Chronological Hourly



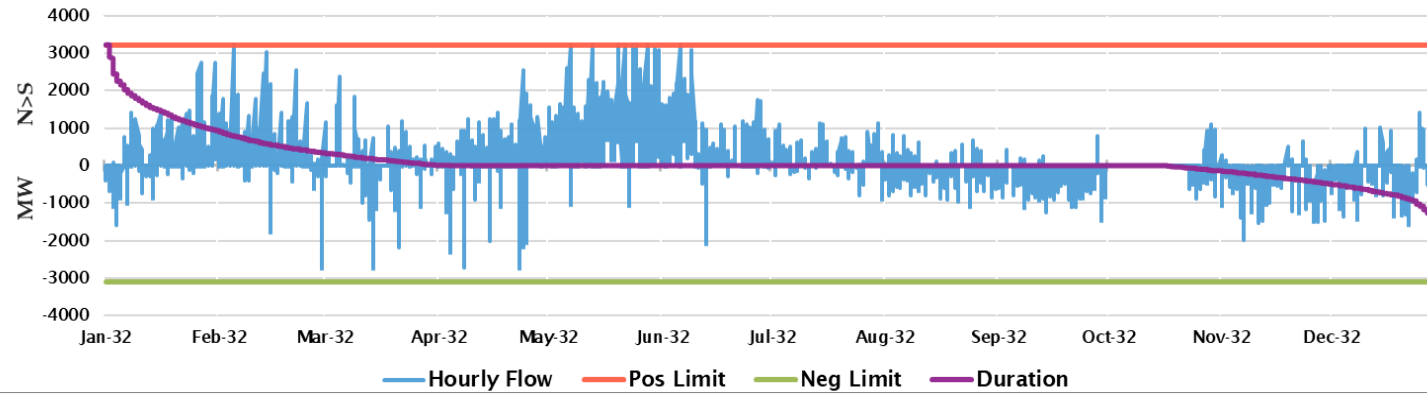
P27 Intermountain Power Project DC Line - 2034ADsv0.8 Chronological Hourly



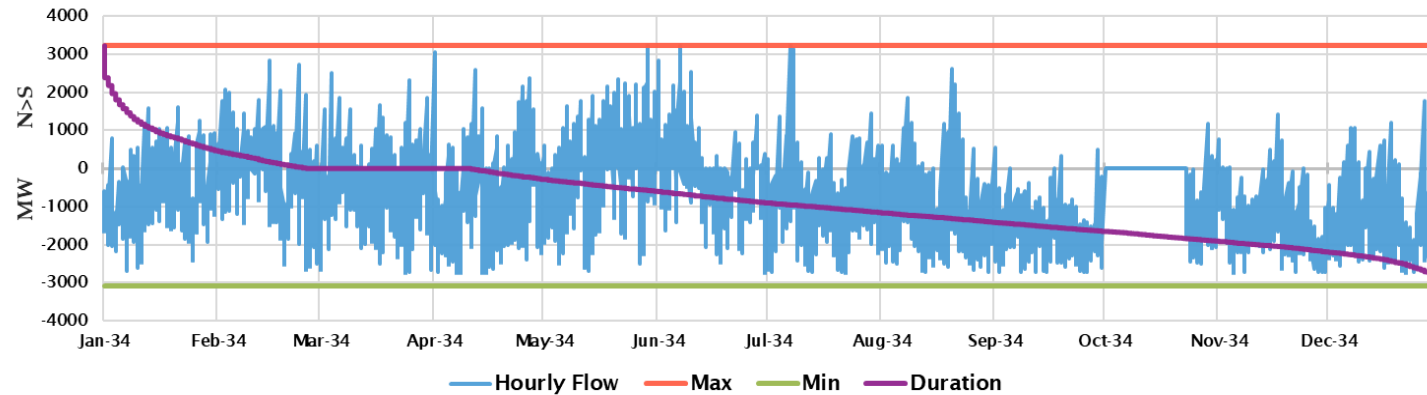
P27 Intermountain Power Project DC Line - 2034ADsv0.8-WA-ORCO20Dollars Chronological Hourly



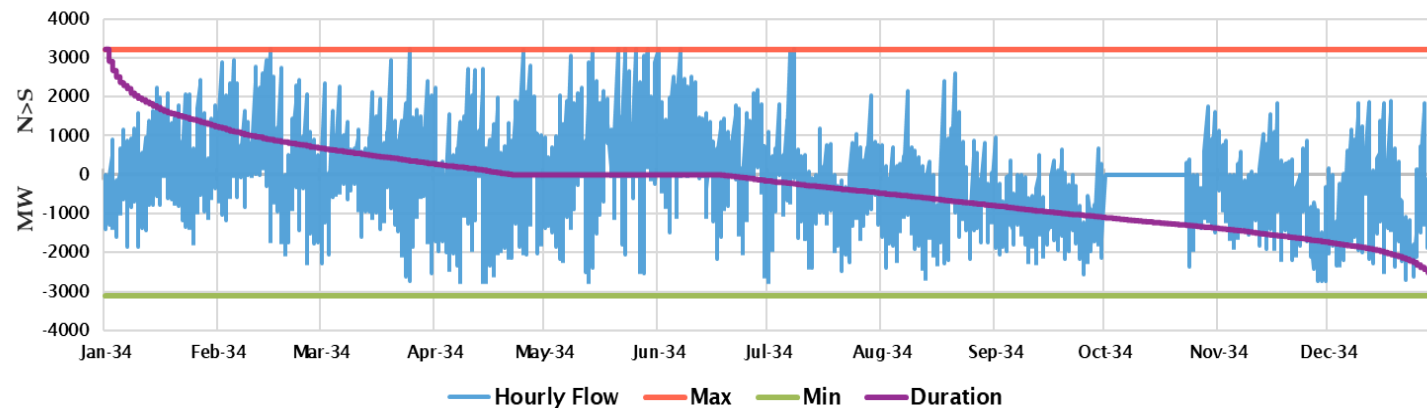
P65 Pacific DC Intertie (PDCI) - 2032ADsv2.4.3 Chronological Hourly



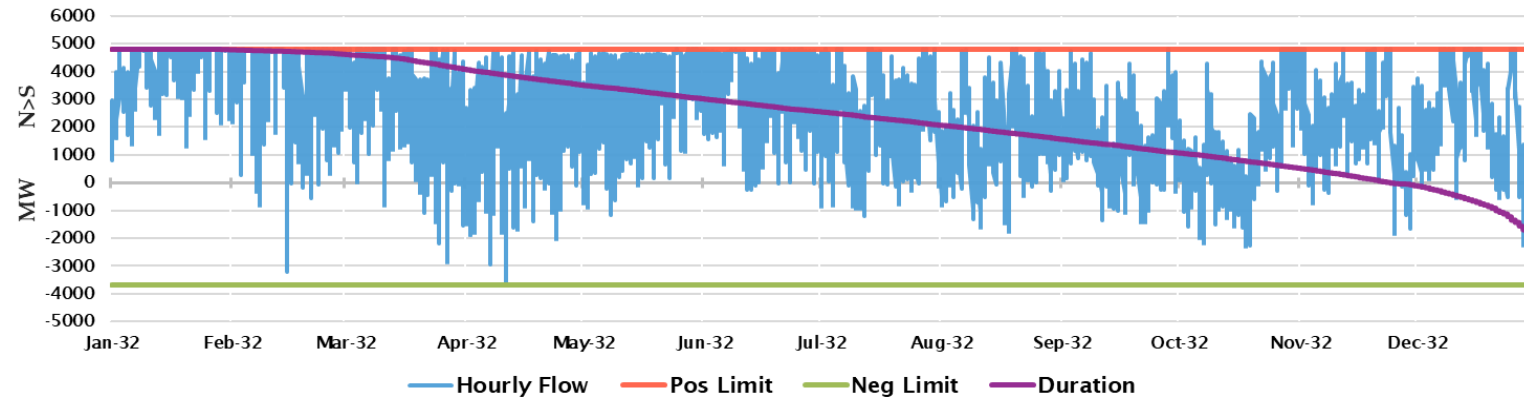
P65 Pacific DC Intertie (PDCI) - 2034ADsv0.8 Chronological Hourly



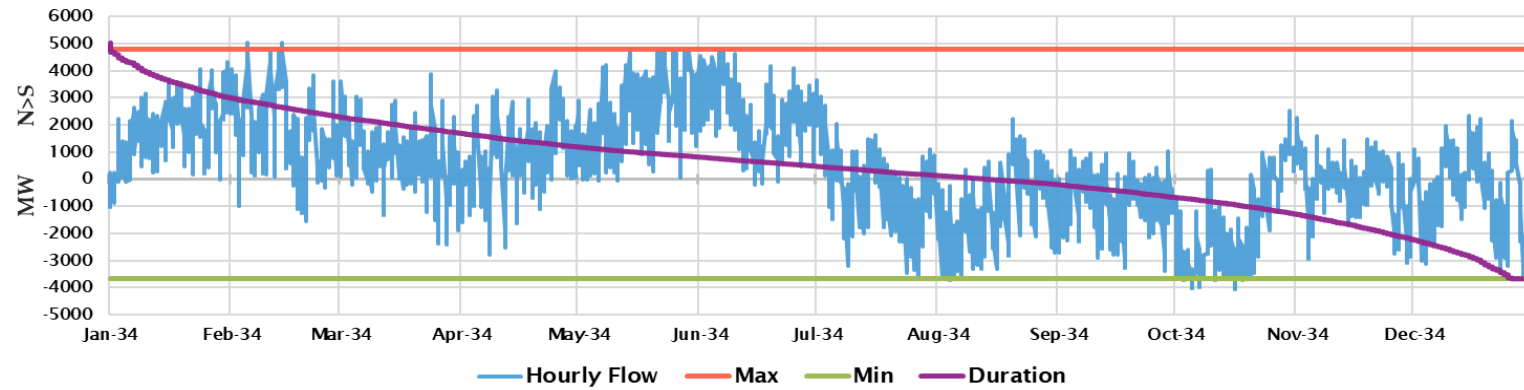
P65 Pacific DC Intertie (PDCI) - 2034ADsv0.8-WA-ORCO20Dollars Chronological Hourly



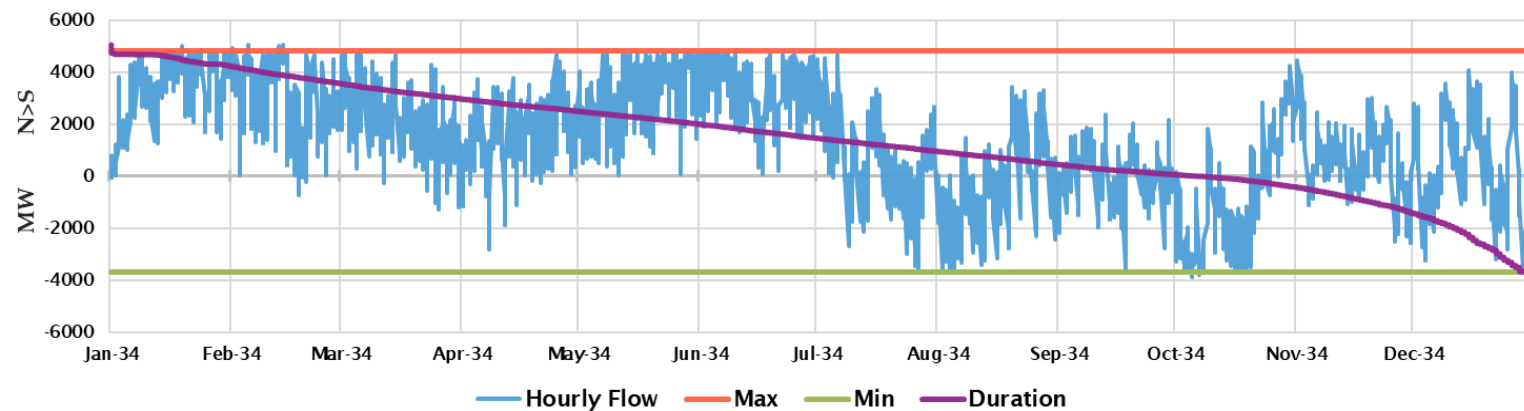
P66 COI - 2032ADSv2.4.3 Chronological Hourly



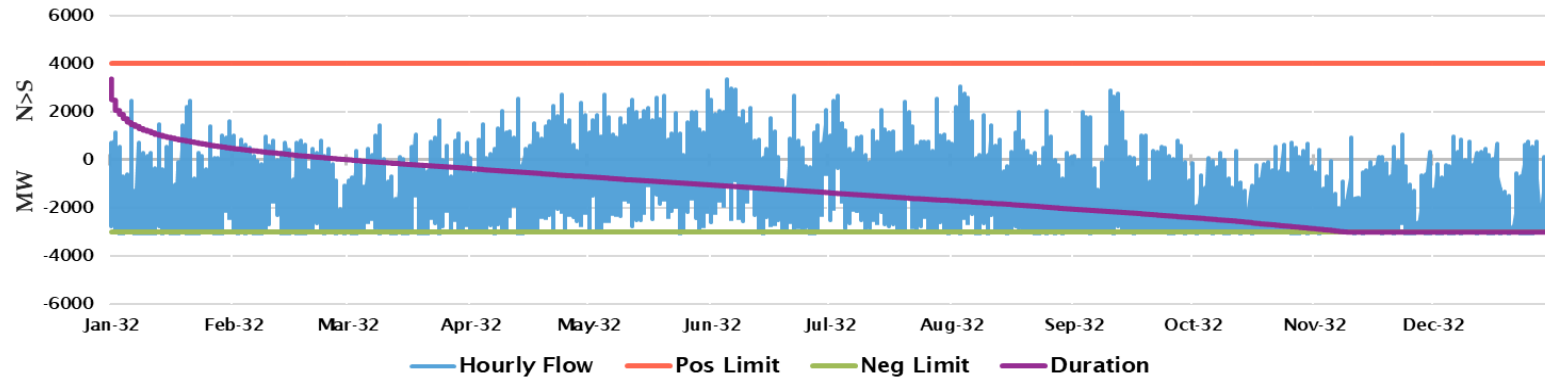
P66 COI - 2034ADSv0.8 Chronological Hourly



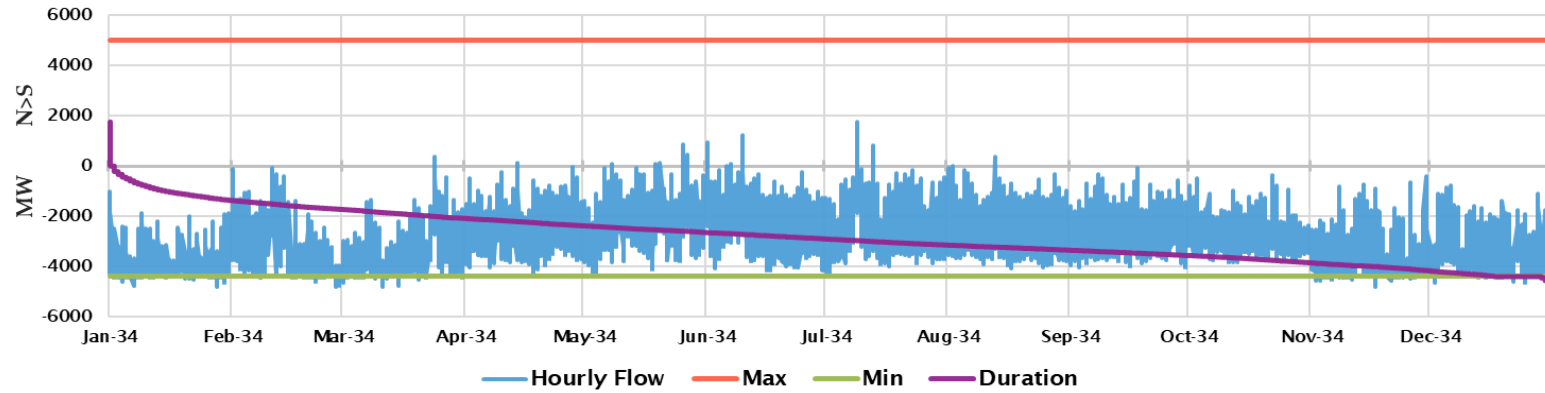
P66 COI - 2034ADSv0.8-WA-ORCO2 0Dollars Chronological Hourly



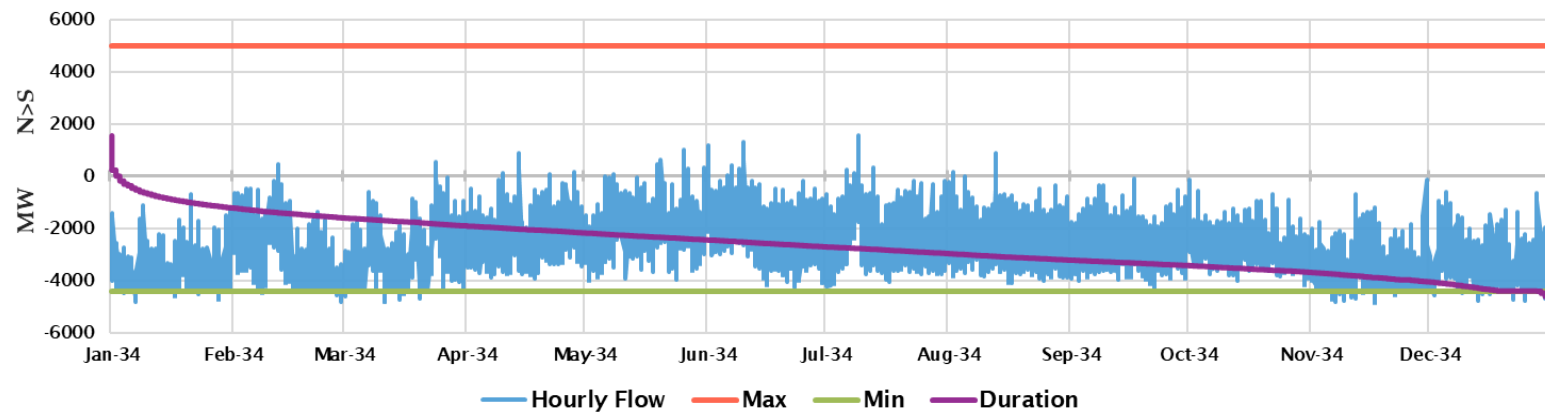
P26 Northern-Southern California - 2032ADsv2.4.3 Chronological Hourly



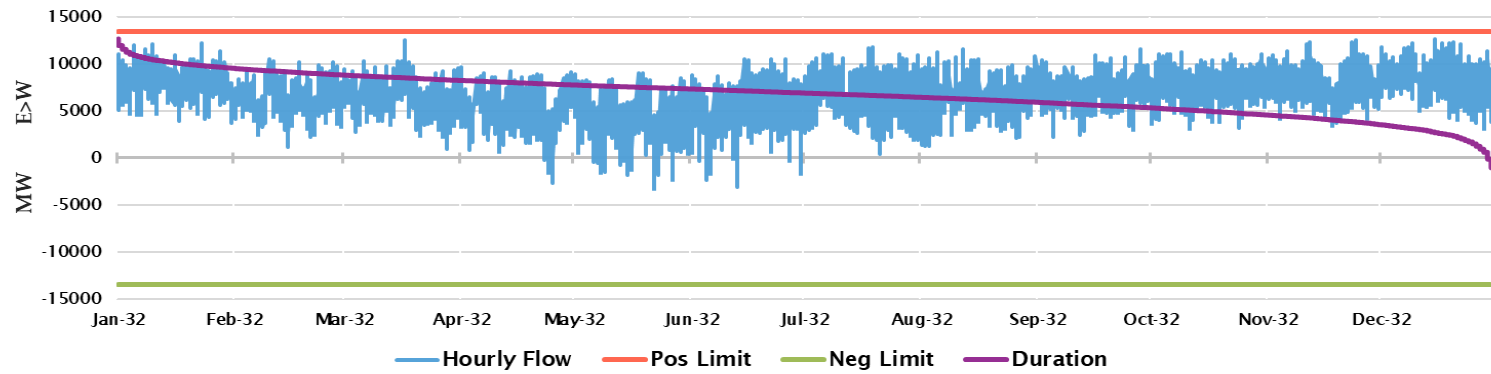
P26 Northern-Southern California - 2034ADsv0.8 Chronological Hourly



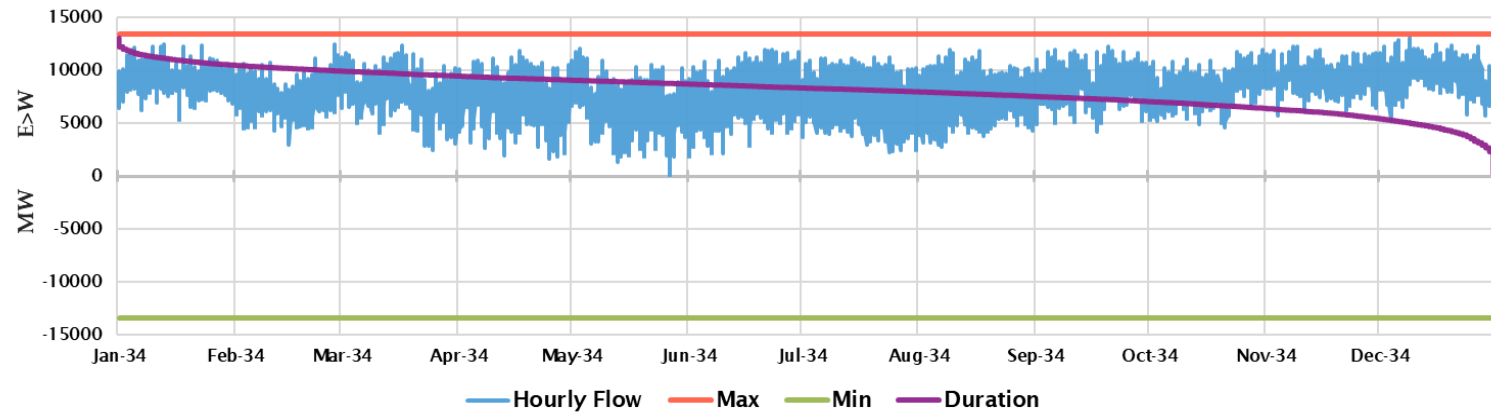
P26 Northern-Southern California - 2034ADsv0.8-WA-ORCO20Dollars Chronological Hourly



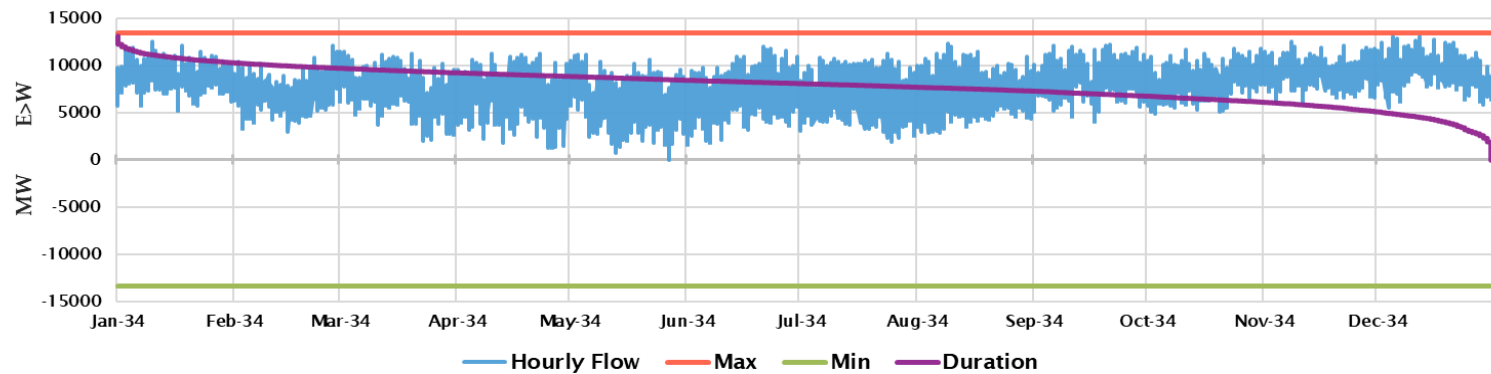
P46 West of Colorado River (WOR) - 2032ADSv2.4.3 Chronological Hourly



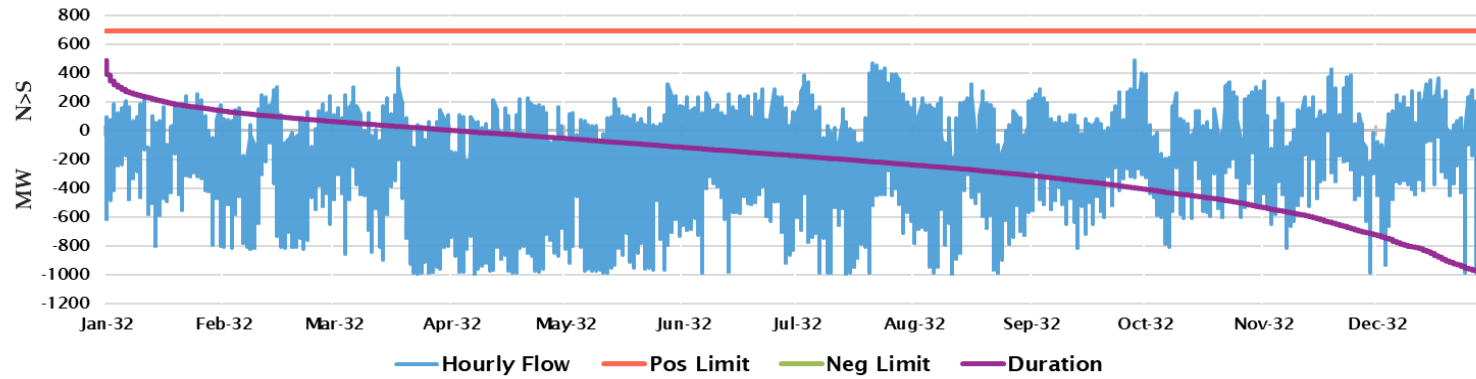
P46 West of Colorado River (WOR) - 2034ADSv0.8 Chronological Hourly



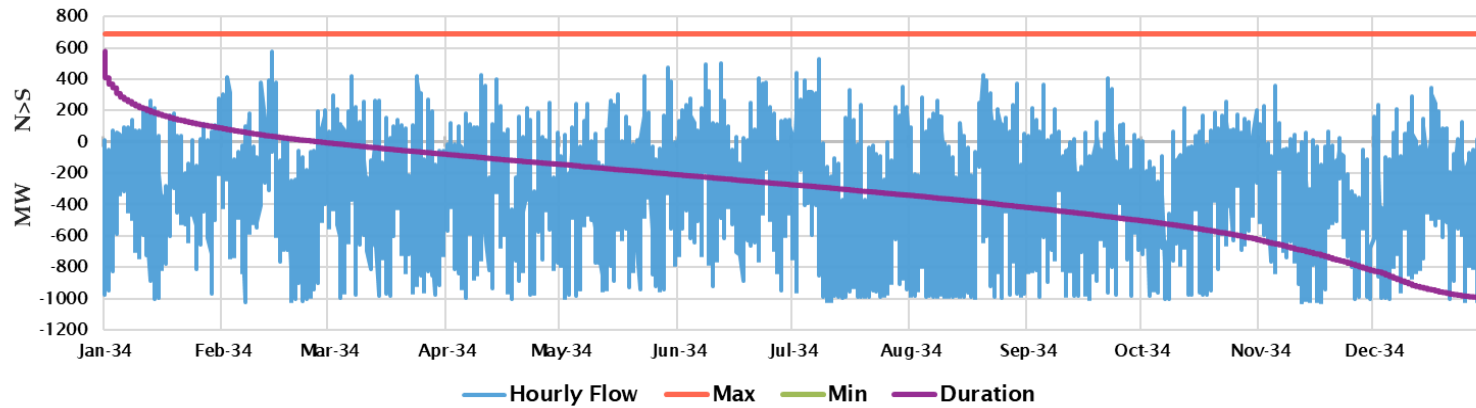
P46 West of Colorado River (WOR) - 2034ADSv0.8-WA-ORCO20Dollars Chronological Hourly



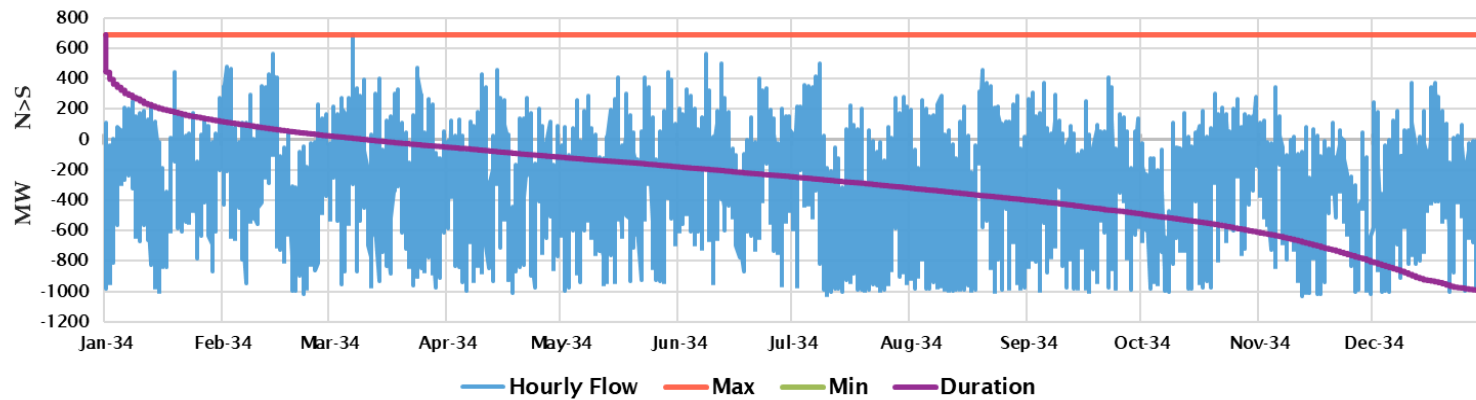
P31 TOT 2A - 2032ADsv2.4.3 Chronological Hourly



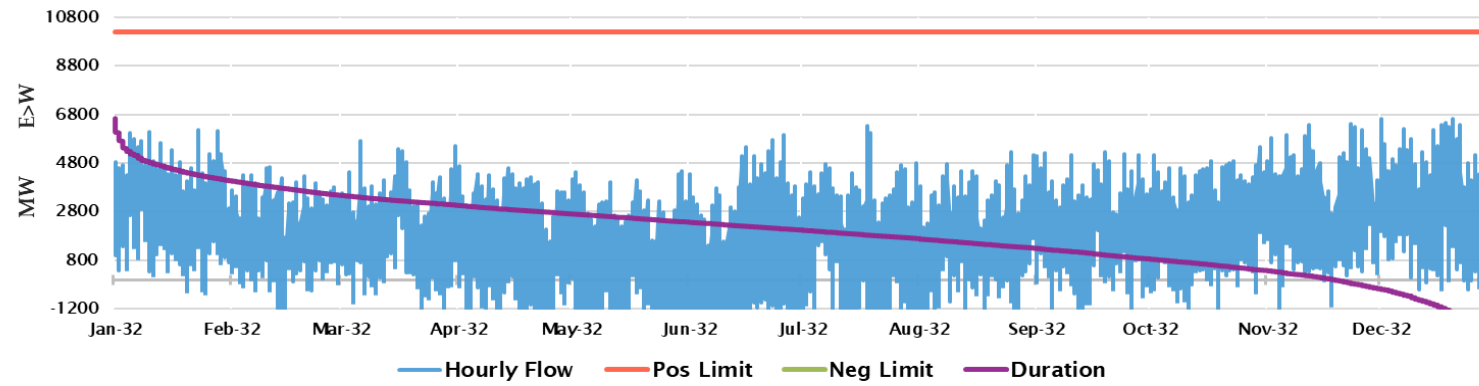
P31 TOT 2A - 2034ADsv0.8 Chronological Hourly



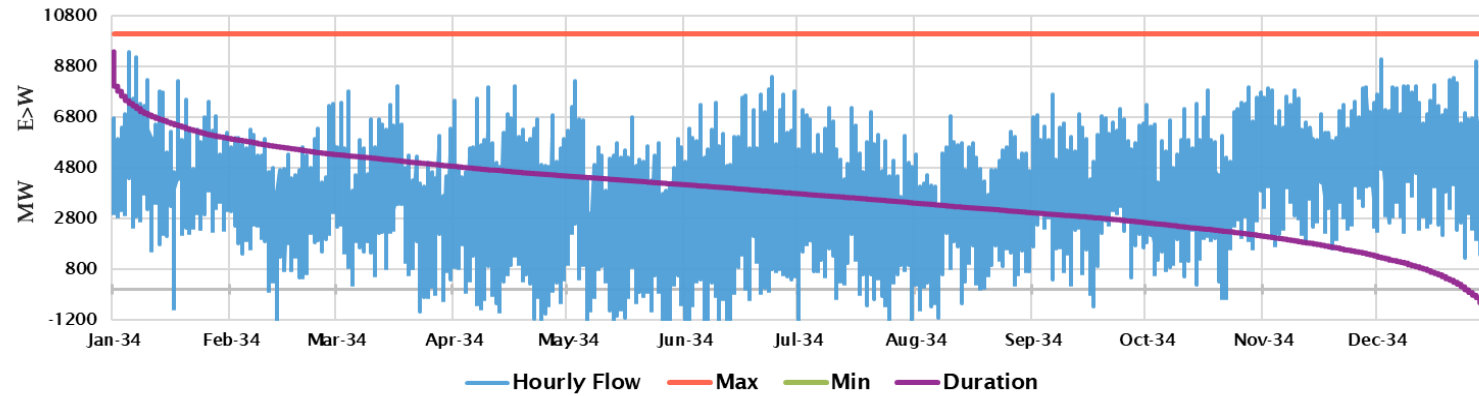
P31 TOT 2A - 2034ADsv0.8-WA-ORCO20Dollars Chronological Hourly



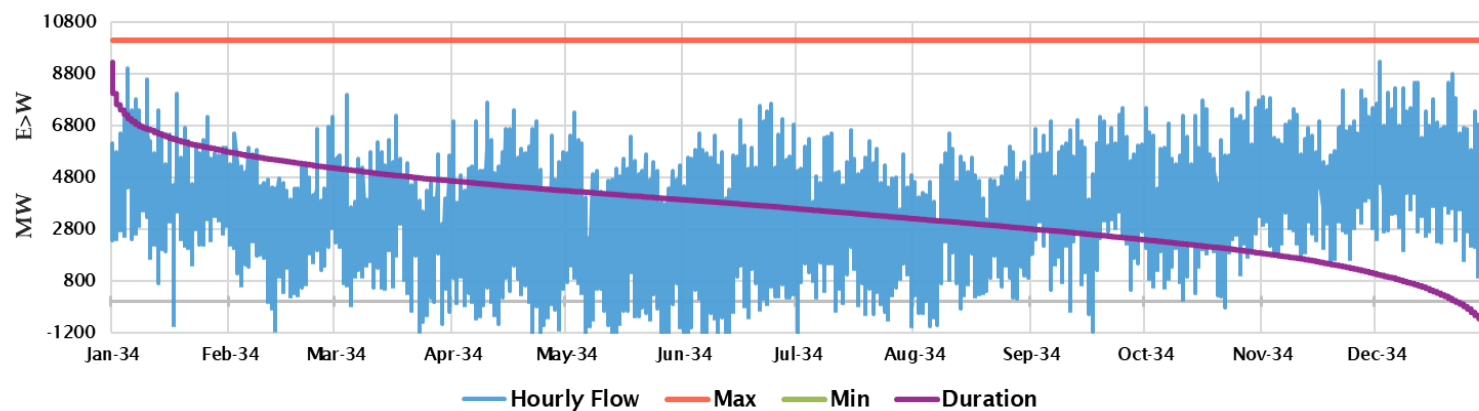
P49 East of Colorado River (EOR) - 2032ADSv2.4.3 Chronological Hourly



P49 East of Colorado River (EOR) - 2034ADSv0.8 Chronological Hourly



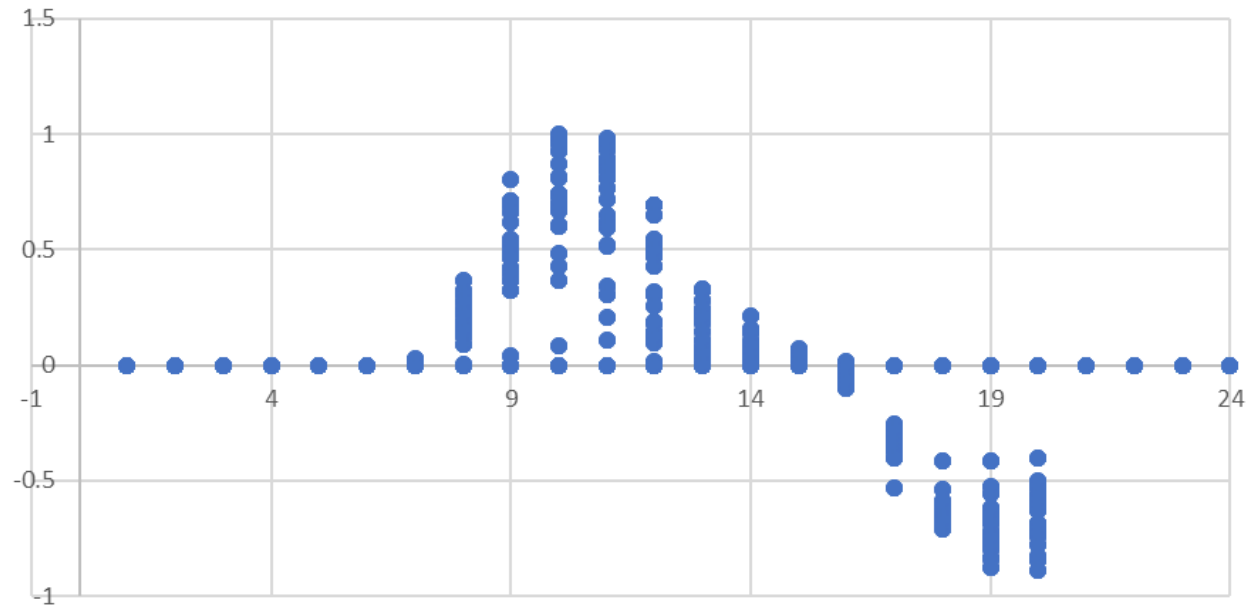
P49 East of Colorado River (EOR) - 2034ADSv0.8-WA-ORCO20Dollars Chronological Hourly



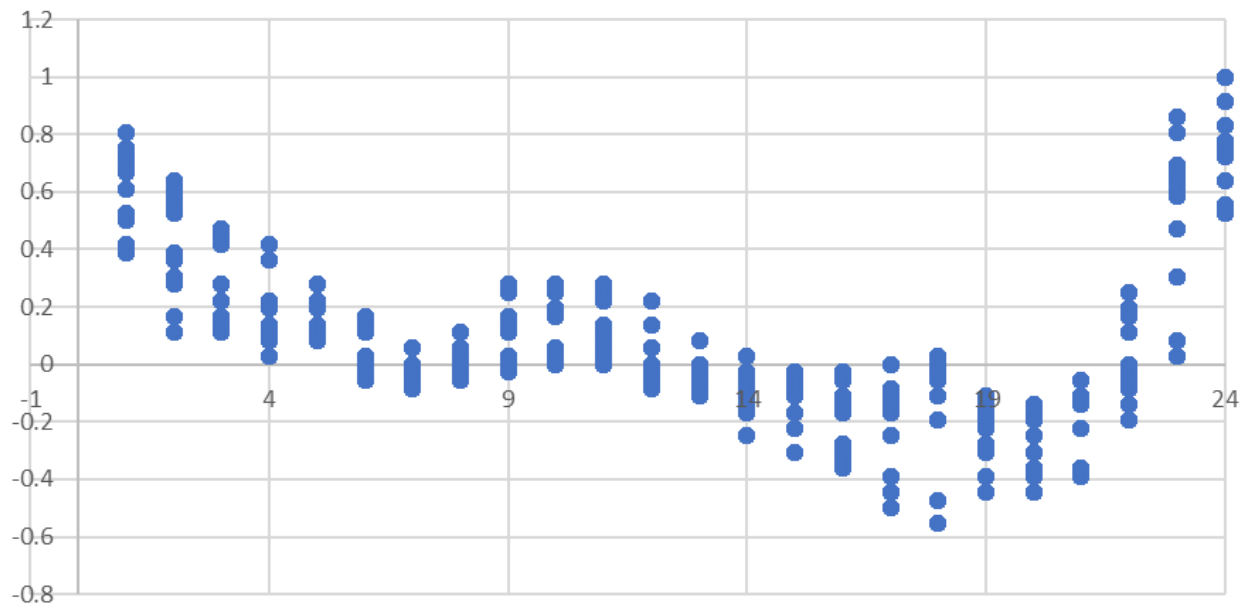
BTM ES Review

SDG&E

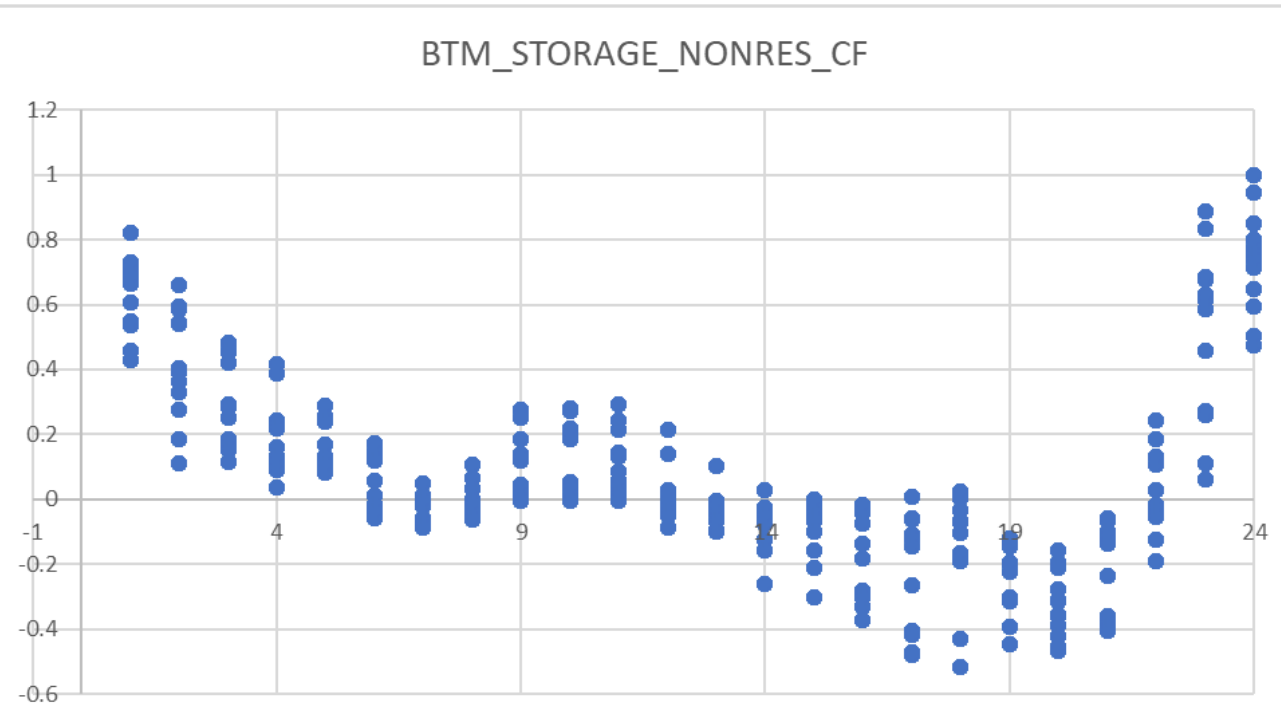
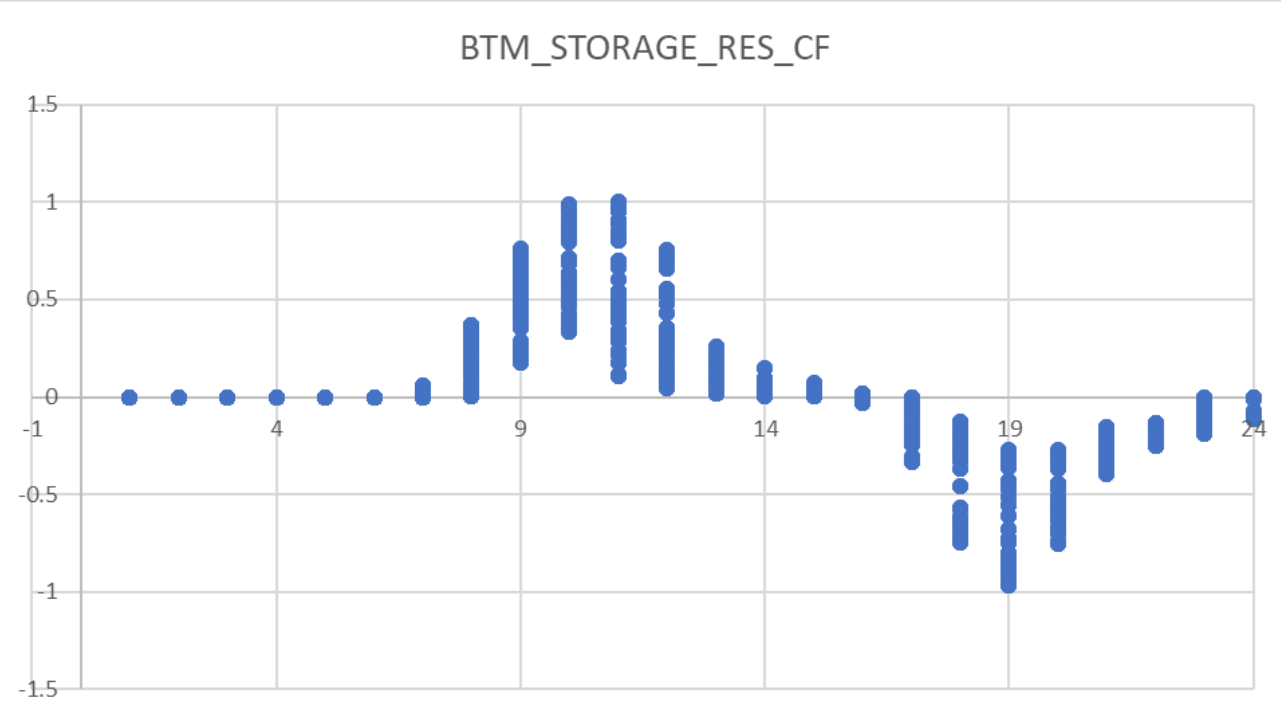
BTM_STORAGE_RES_CF



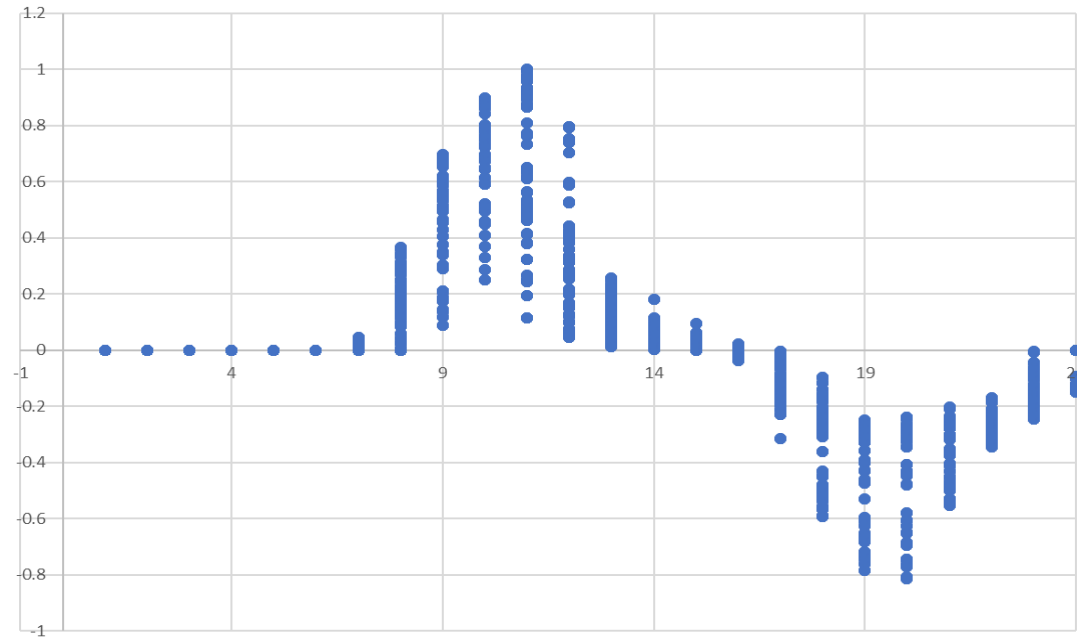
BTM_STORAGE_NONRES_CF



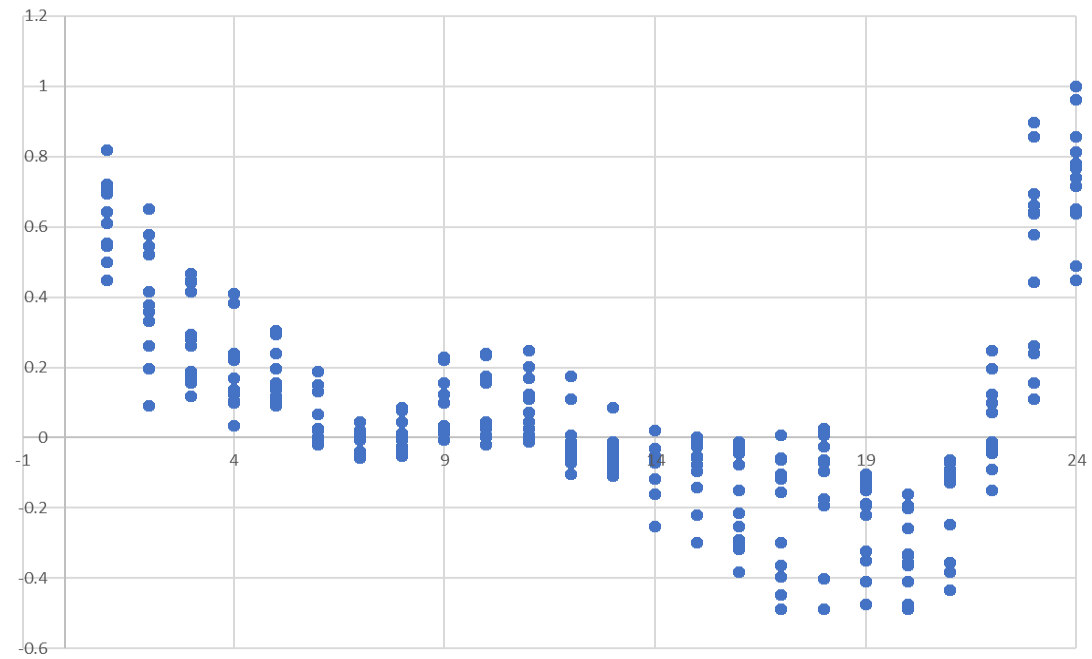
CAISO



BTM_STORAGE_RES_CF

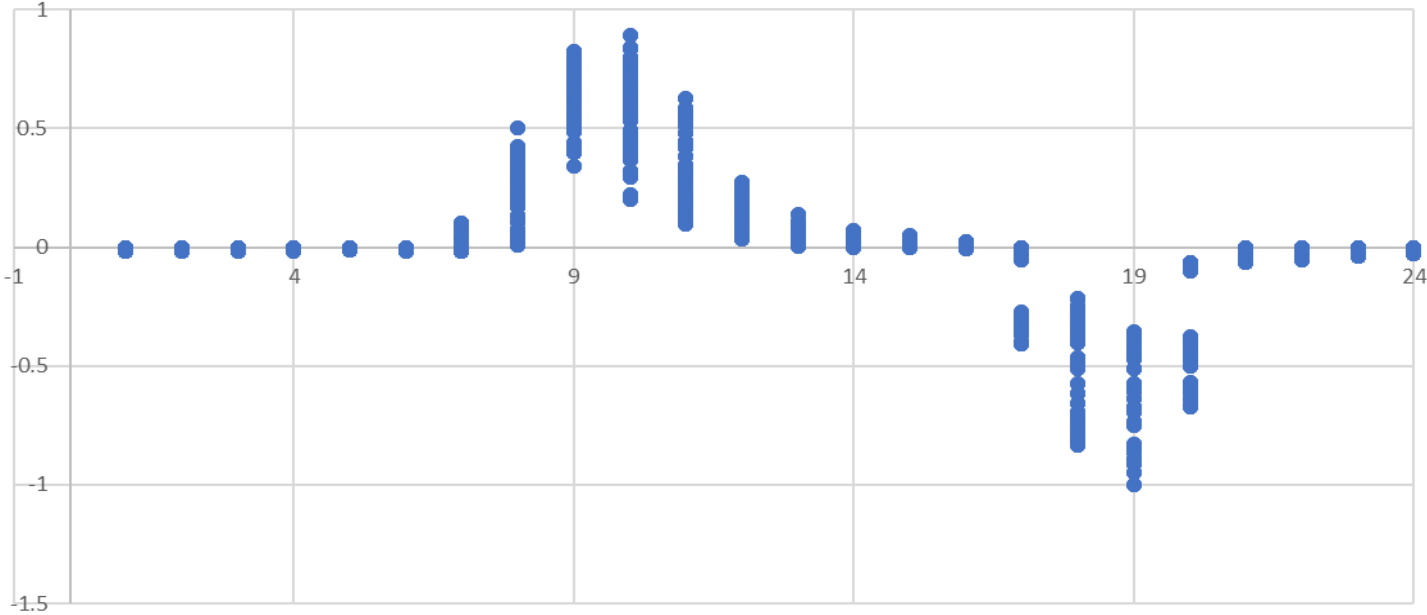


BTM_STORAGE_NONRES_CF

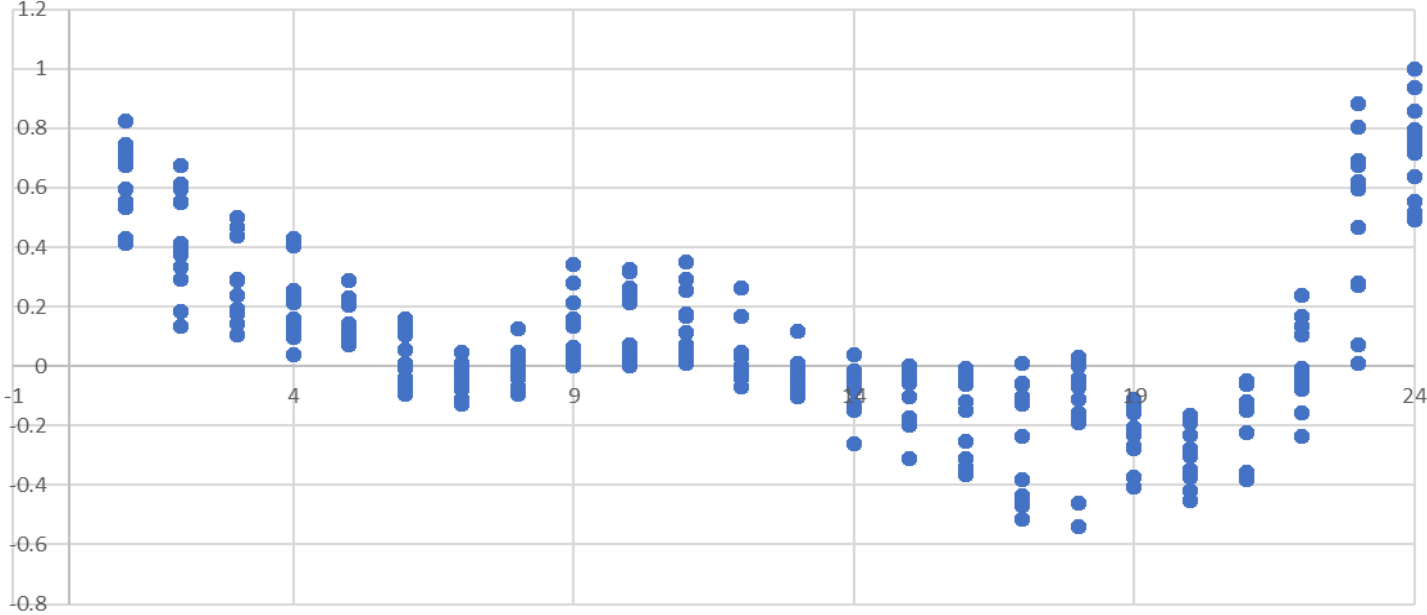


SCE

BTM_STORAGE_RES_CF



BTM_STORAGE_NONRES_CF





Electric Reliability and Security for the West

www.wecc.org