

WALTHERS™

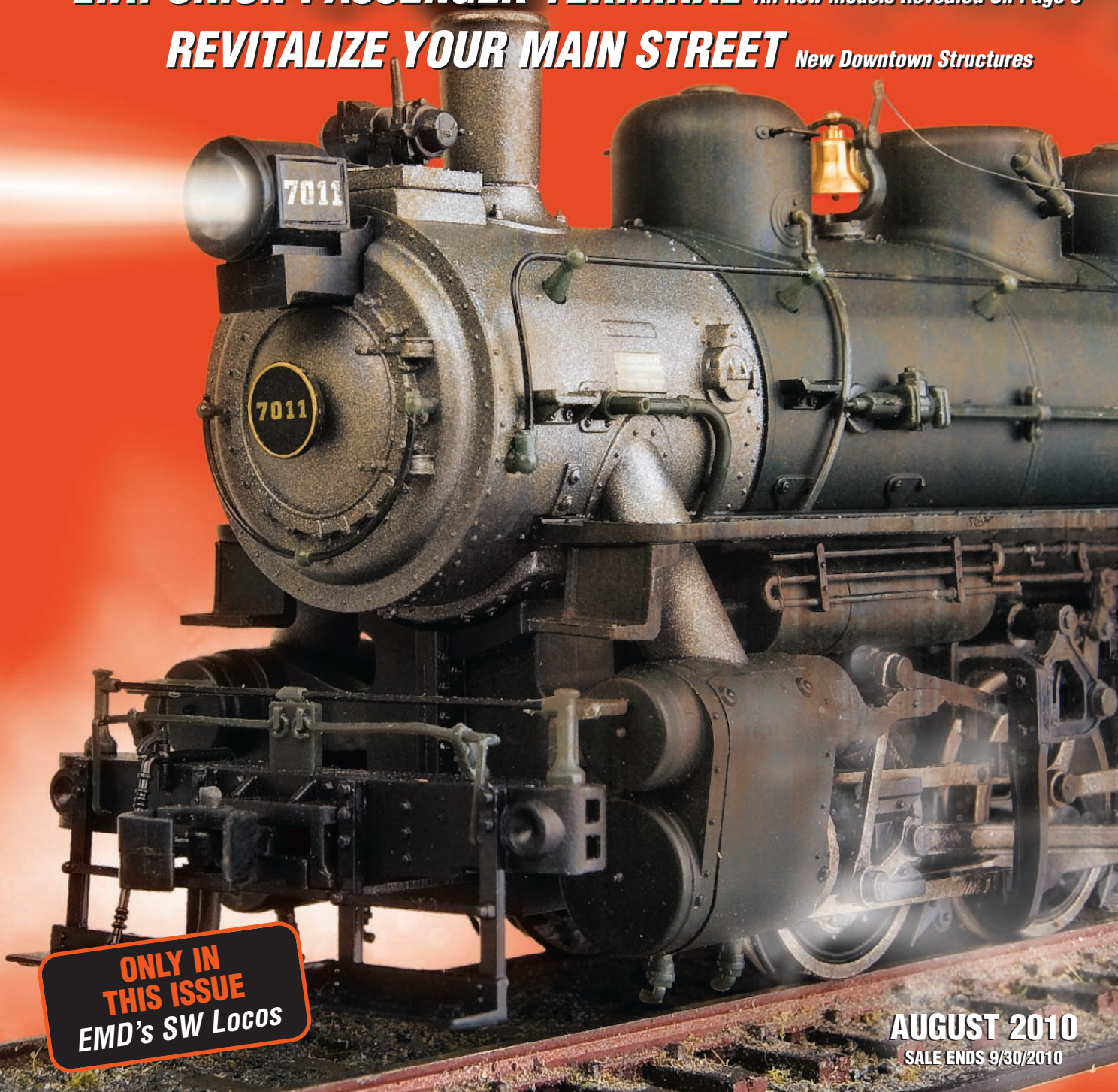
FLYER

Your Number One Resource for Model Railroad Product Information

RUGGED NEW SWITCHERS *PROTO 2000® SW8/900s*

L.A. UNION PASSENGER TERMINAL *All New Models Revealed On Page 5*

REVITALIZE YOUR MAIN STREET *New Downtown Structures*



**ONLY IN
THIS ISSUE**
EMD's SW Locos

AUGUST 2010
SALE ENDS 9/30/2010

Find a Hobby Shop Near You! Visit walthers.com or call 1-800-487-2467

WHAT'S INSIDE



Flyer First

HO Scenemaster™ Botanicals™
Eight New Plant Varieties | pg 4



Flyer First

HO Cornerstone® Los Angeles Union Passenger
Terminal & Station Platform Kits | pg 5



Flyer First

HO ATSF Super Chief Locos & Cars
Now with Real Metal Finish | pg 17

WELCOME

Summer just got hotter with the amazing line up of new products announced for the first time in this Walther's Flyer™!

MAIN STREET USA — Develop your HO downtown with this collection of models on page 6.

SUPERB SUPER CHIEF — Plated metal finish, factory-installed grabs, tinted windows, all-new Regal Sleepers and Warbonnet PROTO 2000® F3s — read all about it on page 17!

NEW GREENERY FOR HO SCENERY— Superdetail scenes with new laser-cut paper plant kits, featured on page 4!

AMAZING NEW STATION — First time in HO! Check out the Los Angeles Union Passenger Terminal kit on page 5.

Phil Walther

CONTENTS

Walther's™ New Flyer First Products	Pages 4-6
New Products from Walther's	Pages 7-10
2011 Walther's Reference Books	Page 10
New Arrivals at Walther's	Page 11
HO Scale	Pages 12-35, 38-44, 70-71
Life-Like Racing Products	Page 45
Märklin & Trix Train Products	Page 46
N Scale	Pages 47-52
Z, S, 1/50 & On30 Scale	Page 52
O Scale	Pages 52 & 53
All Scale	Pages 54-69



BOOMTOWN USA – NOW IN STOCK

HO Scale Kits for Any Era



- Nine All-New Models
- Precision Lasercut Parts
- Architectural Grade Cardstock
- Easy to Customize
- Colorful Signs Included
- Made in USA

Lasercut



MERCHANT BUILDING
933-2881 \$29.98
4.25 x 3.5 x 3" High



CORNER OFFICE
933-2880 \$29.98
4.625 x 3.625 x 1.5" High



STABLE & FENCE
933-2888 \$34.98
5.75 x 3.5 x 2.5" High



ROSIE'S SALOON
933-2882 \$34.98
3.5 x 4.375 x 3" High



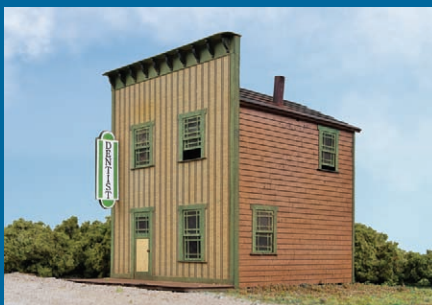
CORNER BUSINESS
933-2885 \$34.98
3.5 x 3.25 x 2.875" High



HOMETOWN SHOP
933-2886 \$19.98
3 x 2.125 x 2.125" High



LODGING HOUSE
933-2883 \$44.98
4.25 x 4.25 x 3.75" High



TRADES OFFICE
933-2884 \$29.98
3.5 x 2.5 x 3" High



OUTBUILDINGS
933-2887 \$14.98
Left to Right:
1.5 x 1.5 x 1.125" High
.75 x .75 x 1" High
.75 x .75 x 1.125" High
.5 x .5 x 1.125" High (qty. 2)

**See how easy it is to build and customize these kits!
Check out the Boomtown how-to videos at walthers.com**

Designed Exclusively for Walther's by GCLaser

Flyer First

Order Today!



Photo courtesy of Diesel Era magazine

NEW ROADNAMES & NUMBERS!

NEW HO PROTO 2000®
EMD SW8/900

November 2010 Delivery
Sound & DCC \$239.98
Standard DC \$159.98

- Prototype-Specific Detailing
- All-Wheel Drive
- Heavy Die Cast Chassis for Maximum Traction
- 5-Pole Skew Wound Armature Motor
- Precisely Meshed Gears for Silent Running
- Machined Brass Flywheels
- Proto MAX™ Metal Knuckle Couplers
- Constant & Directional Headlights
- Available With or Without Factory-Installed Sound & DCC*

*Select sounds can be operated with standard DC power pack; all sound features can be operated with DCC controllers. Sound features include: Diesel Engine, Horn, Bell, Squealing Brakes, Doppler Effect, Air Let Off (in neutral), Headlight, and Trailer which mutes whistle and bell for double heading.

Canadian National



920-41480 #7158 w/Sound & DCC
920-41481 #7165 w/Sound & DCC
920-48480 #7158 Standard DC
920-48481 #7165 Standard DC

Conrail



920-41482 #8608 w/Sound & DCC
920-41483 #8611 w/Sound & DCC
920-48482 #8608 Standard DC
920-48483 #8611 Standard DC

Rock Island



920-41484 #816 w/Sound & DCC
920-41485 #821 w/Sound & DCC
920-48484 #816 Standard DC
920-48485 #821 Standard DC

Lehigh Valley



920-41486 #128 w/Sound & DCC
920-41487 #250 w/Sound & DCC
920-48486 #128 Standard DC
920-48487 #250 Standard DC



AMAZING 3-D REALISM!

NEW HO SceneMaster™
Botanicals™

August 2010 Delivery
\$6.99 Each

- Laser-cut to Capture Ultra-Fine Details
- Printed on Tear-Resistant Paper
- Eight Plant Varieties
- Multiple Plant Bunches Per Pack
- Super-Easy Assembly



433-1069 Lily Pads (2 Sheets)



433-1070 Dandelions (48 Plants)



433-1071 Sage (10 Plants)



433-1072 Virginia Creeper (12 Plants)



433-1073 Stinging Nettles (10 Plants)



433-1066 Cattails (16 Plants)



433-1067 Ferns (9 Plants)



433-1068 Hollyhocks (10 Plants)



Prototype photo provided courtesy of www.destination-southern-california.com

PERFECT FOR UP CITY & ATSF SUPER CHIEF TRAINS!

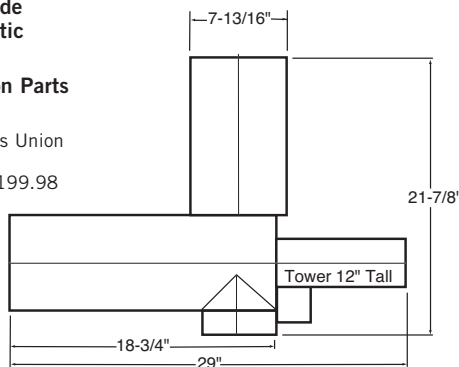
NEW HO Cornerstone® Los Angeles Union Passenger Terminal Kit

November 2010 Delivery

- Based on LA Station Still in Use Today
- Sized to Fit Most Layouts

- Architectural-Grade Cardstock & Plastic Construction
- Lasercut Precision Parts
- Ornate Details

933-3390 Los Angeles Union Passenger Terminal
29 X 21-7/8 x 12" \$199.98



NEW HO Cornerstone® Station Platforms Kit

- Durable Plastic Molded in Color
- LED Lighting
- Resistor & Wires Included
- Parts For 4 Sections

933-3391 Station Platforms
11-3/4 x 2/14 x 2/5/8" each section
\$39.98



Preproduction model shown.

The Legendary Super Chief is Back!

- New Plated Metal Finish
- All Grab Irons Factory Installed
- Prototypically Tinted Windows
- Santa Fe Class 16 Warbonnet F3s

AND, FOR THE FIRST TIME...

- Pullman-Standard "Regal" Series 4-4-2 Sleeper

Read all about it on page 17.



Don't miss out on any of Walther's exciting new products. These Flyer Firsts are now available to order for the first time:

HO PROTO 2000® EMD SW8/900

CN, CR, Rock Island, Lehigh Valley

HO Life-Like Botanicals™

Cattails, Ferns, Hollyhocks, Lily Pads, Dandelions, Sage, Virginia Creeper, Stinging Nettles

HO Cornerstone Los Angeles Union Passenger Terminal & Train Shed

HO Cornerstone Main Street USA

Thompson Bros. Paint, Magnolia Hotel, Cristie's Pet Supply, Simmons Five & Dime, Glover Park Hardware, Argosy Booksellers Building, Derry's Pub, Perfect Perk Café, Village Pizza
See page 6 for more details.

HO Santa Fe Super Chief Locos & Cars with Real Metal Finish

PROTO 2000 EMD F3 Sound & DCC or Standard DC
P-S "Regal" Series 4-4-2 Sleeper, Budd "Pine" Series 10-6 Sleeper, Budd 73' Baggage Car, P-S 36-Seat Diner, P-S 29-Seat Dormitory-Lounge, P-S "Pleasure Dome" Bar-Lounge, Budd 63' Railway Post Office, P-S "Vista" Series Observation-Lounge
See page 17 for more details.

Be the first to order -

**they may be gone
before you know it.**



**Reserve these
new products at
your hobby shop,
or order before
August 31, 2010.**

Find a Hobby Shop Near You! Visit walthers.com or call 1-800-487-2467

BUILD YOUR IDEAL TOWN SCENE!

NEW HO Cornerstone® Main Street USA
December 2010 Delivery

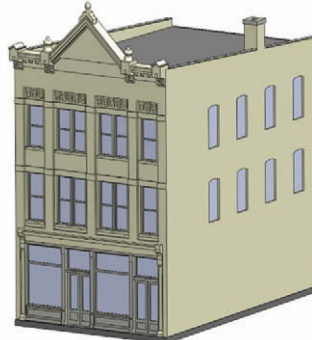
- Easy-to-Build Plastic Kits Molded in Colors
- Finely Detailed
- Colorful Decals for Multiple Businesses
- Designed to Work With Cornerstone Street System
- Mix & Match or Use Separately
- Fit Any Era



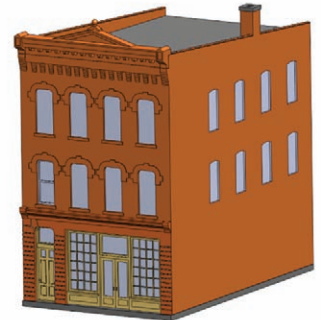
933-3460 Thompson Bros. Paint \$39.98
3-1/2 x 6 x 7-1/4"



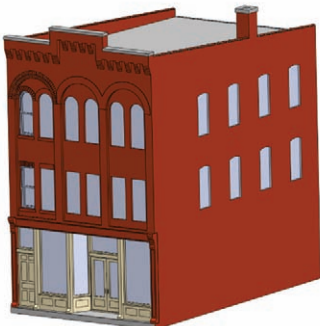
933-3466 Argosy Booksellers \$39.98
4-3/4 x 8-1/2 x 7-1/4"



933-3462 Magnolia Hotel \$34.98
3-1/2 x 6-1/8 x 6-3/4"



933-3463 Cristie's Pet Supply \$34.98
3-1/2 x 6-1/8 x 6-1/8"



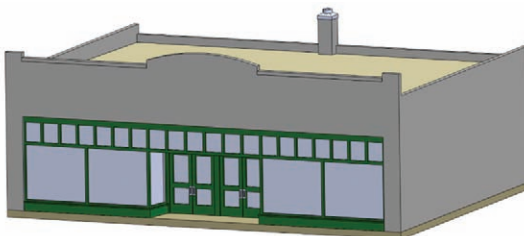
933-3467 Derry's Pub \$34.98
3-1/2 x 6-1/8 x 6"



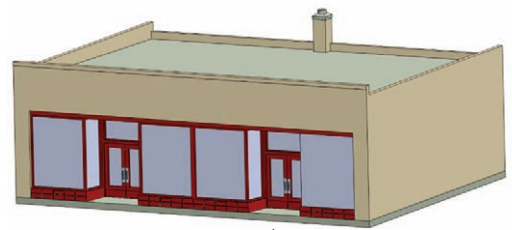
933-3468 Perfect Perk Café \$34.98
3-1/8 x 5-1/2 x 4-1/2"



933-3469 Village Pizza \$34.98
3-1/8 x 5-1/2 x 4-3/4"



933-3464 Simmons Five & Dime \$29.98
7-1/8 x 5-1/2 x 3"



933-3465 Glover Park Hardware \$29.98
7-1/8 x 5-1/2 x 2-7/8"

Preproduction models shown assembled and painted. Actual colors and details may vary.

BREAKING NEW PRODUCT NEWS!

Pre-order these and more
at a participating hobby shop,
or visit walthers.com for
more information.

You asked and Walthers delivers! Put away your drills and bits — most of our newest HO cars are coming with all grab irons installed!

Previously announced as Gold Line™, most of the recently announced Walthers HO freight cars are being upgraded to Platinum Line™ **with factory-installed grab irons**, including the:

- Gunderson 50' Hi-Cube Paper Service Boxcars
- ACF Type 21 10,000-Gallon Tank Cars
- Ortner 41' Aggregate Hoppers
- Tri-Level Auto Carriers
- Canadian 50' Bulkhead Flatcars
- 46' USRA Steel Gondolas
- Sieco 50' Pulpwood Flatcars*
- 64' Plastic Pellet Hoppers*

And all three Ethanol cars* are making the move to Platinum Line!

* Previously announced — see walthers.com for more details.

And, new HO passenger cars **will also feature factory-installed grabs** including the:

- M-O-W Heavyweight 12-1 Sleeper
- M-O-W 36-Seat Diner
- M-O-W 70' Baggage Car
- Streamlined 10-6 Sleeper
- Streamlined 4-4-2 Sleeper
- Streamlined 12 Double-Bedroom Sleeper
- Streamlined 52-Seat Coach*
- ACF Heavyweight 70' Baggage Car

There will be NO change to the announced prices on any of these items.

ADVANCE RESERVATIONS

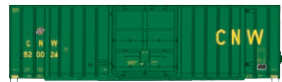
Reserve now for future delivery
(visit walthers.com for delivery updates).

NEW HO Platinum Line
Gunderson 50'
Hi-Cube Paper-Service Boxcar
January 2011 Delivery
\$27.98 Each

- Now with Factory-Installed Grab Irons
- New Schemes
- Proto MAX™ Metal Knuckle Couplers
- RP-25 Metal Wheels



932-7136 CN #405884 (Boxcar Red, CN Website logo)
932-7137 CN #405908 (Boxcar Red, CN Website logo)
932-7138 CN #405904 (Boxcar Red, CN Website logo)



932-7145 CNW #520024 (green)



932-7146 CHTT #405131 (Boxcar Red)
932-7147 CSX #151201 (blue, Big Blue Lettering)
932-7148 SSW #59006 (Boxcar Red)

NEW HO Pullman-Standard
10-6 Sleeper
January 2011 Delivery
\$64.98 Each

- Now with Factory-Installed Grab Irons
- Smooth Sides
- Full Interior
- Working Diaphragms
- Proto MAX Metal Knuckle Couplers
- RP-25 Metal Wheels



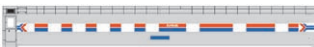
932-9381 GN (Omaha Orange, green)



932-9382 ATSF (gray)



932-9383 CNW (yellow, green)



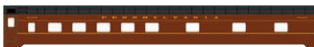
932-9384 Amtrak® (Phase I)



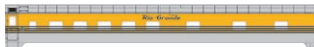
932-9385 SP (silver, red)



932-9386 NP (Two-Tone Green)



932-9387 PRR (Tuscan Red)



932-9388 DRGW (4-Stripe Scheme)



932-9389 C&O (blue, gray, yellow)



932-9390 Rock Island (silver)



932-9391 UP (yellow, gray)



932-9392 CN (black, gray)

NEW N Greenville 100-Ton
2-Bay Hopper
February 2011 Delivery
\$16.98

- First Time in N Scale
- Perfect for Quarry & Stone Service
- Authentic Paint & Lettering
- Accumate® Knuckle Couplers
- Aggregate Load Available Separately



932-50101 NS #103515
932-50102 NS #103349
932-50103 NS #103486



932-50104 UP (SP Reporting Marks)
932-50105 UP (SP Reporting Marks)
932-50106 UP (SP Reporting Marks)



932-50107 SP #465014
932-50108 SP #465273
932-50109 SP #465541



932-50110 WC #34043
932-50111 WC #34028
932-50112 WC #34051



932-50113 SOU #103473
932-50114 SOU #103362
932-50115 SOU #103508



932-50116 Granite Rock #1811
932-50117 Granite Rock #1808
932-50118 Granite Rock #1835



932-50119 Golden West #629608
932-50120 Golden West #629533
932-50121 Golden West #629571
932-50100 Undecorated

Find a Hobby Shop Near You! Visit walthers.com or call 1-800-487-2467

ADVANCE RESERVATIONS

Reserve now for future delivery
(visit walthers.com for delivery updates).

NEW HO Platinum Line™ Evans 4780 Cubic Foot Covered Hopper

July Delivery
\$29.98 Each

- Now with Factory-Installed Grab Irons
- Etched-Metal Walkway Details• Favorites for Hauling Grain & DDGS
- Perfect for Use with North American Ethanol Series Models
- Proto MAX™ Metal Knuckle Couplers



932-41201 MKT/UP# #4102
932-41202 MKT/UP# #4125
932-41203 MKT/UP# #4147
932-41204 SOO #125679
932-41205 SOO #125716
932-41206 SOO #125763



932-41207 CP #390260
932-41208 CP #390262
932-41209 CP #390266



932-41210 Dakota, Minnesota & Eastern #27087
932-41211 Dakota, Minnesota & Eastern #27088
932-41212 Dakota, Minnesota & Eastern #27095



932-41213 East Erie Commercial EEC #60102 (orange)
932-41214 East Erie Commercial EEC #60201 (Oxide red)
932-41215 East Erie Commercial EEC #60209 (Oxide red)



932-41216 Archer-Daniels-Midland UELX #30377
932-41217 Archer-Daniels-Midland UELX #30402
932-41218 Archer-Daniels-Midland UELX #65139



932-41219 Archer-Daniels-Midland UELX #30426
932-41220 Archer-Daniels-Midland UELX #30373
932-41221 Archer-Daniels-Midland UELX #30405
932-41200 Undecorated

NEW HO Platinum Line Trinity 6351

4-Bay Covered Hopper
August Delivery
\$34.98 Each

- Now with Factory-Installed Grab Irons
- Etched Metal Walkway Details
- Perfect for Use with North American Ethanol Series



932-41101 North American Ethanol #20103 (Billboard Scheme)
932-41102 North American Ethanol #20115 (green)
932-41103 North American Ethanol #20128 (green)
932-41104 ADM #63234
932-41105 ADM #63349
932-41106 ADM #63496
932-41107 Vera Sun Energy TILX #639817
932-41108 Vera Sun Energy TILX #639903
932-41109 Vera Sun Energy TILX #639952
932-41110 Midwest DDG Transport MWTX #212601
932-41111 Midwest DDG Transport #212656
932-41112 Midwest DDG Transport MWTX #212697
932-41113 CRDX #15222
932-41114 CRDX #15157
932-41115 CRDX #15208
932-41116 TILX #640701
932-41117 TILX #640698
932-41118 TILX #640733
932-41100 Undecorated

NEW HO Platinum Line Trinity 30,145-Gallon Tank Car

September Delivery
\$39.98 Each

- Now with Factory-Installed Grab Irons
- Etched Metal Walkway Details
- Used to Haul Ethanol Coast to Coast
- RP-25 Metal Wheels
- Proto MAX Metal Knuckle Couplers



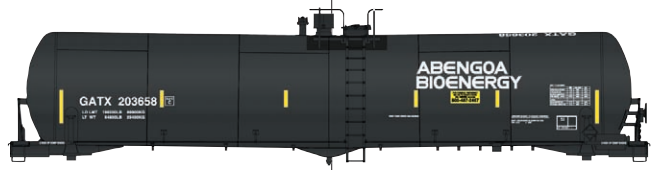
932-41151 North American Ethanol #301002
932-41152 North American Ethanol #301017
932-41153 North American Ethanol #301035



Evans 4780 Cubic Foot Covered Hopper
933-41206



Trinity 6351 4-Bay Covered Hopper 932-41102



Trinity 30,145-Gallon Tank Car 932-41160



932-41154 Global Ethanol TILX #192179
932-41155 Global Ethanol TILX #192225
932-41156 Global Ethanol TILX #192262



932-41157 Renewable Products Marketing Group NATX #302182
932-41158 Renewable Products Marketing Group NATX #302245
932-41159 Renewable Products Marketing Group NATX #302373
932-41160 Abengoa Bioenergy GATX #203658
932-41161 Abengoa Bioenergy GATX #203669
932-41162 Abengoa Bioenergy GATX #203687



932-41163 Midwest Ethanol Transport MWTX #112616
932-41164 Midwest Ethanol Transport MWTX #112704
932-41165 Midwest Ethanol Transport MWTX #112747



932-41166 TILX #319527
932-41167 TILX #319482
932-41168 TILX #319540
932-41150 Undecorated

NEW HO Gold Line™ Greenville 100-Ton 2-Bay Hopper

January 2011 Delivery
\$21.98 Each

- New Roadnumbers
- Perfect for Quarry & Stone Service
- Proto MAX Metal Knuckle Couplers
- RP-25 Metal Wheels



932-7417 Gifford Hill GIHX #1540 (orange)



932-7418 Golden West GVSR #629125 (blue)



932-7419 NS #150279 (brown)
932-7420 NS #150307 (brown)
932-7421 NS #150306 (brown)



932-7422 SOU #103512 (black)
932-7423 SOU #101220 (black)
932-7424 SOU #103312 (black)
932-7425 SP# #465031 (brown)



932-7426 WC #34027 (gray)

ADVANCE RESERVATIONS

Reserve now for future delivery
(visit walthers.com for delivery updates).

NEW HO N Freight Car Loads September Delivery

- Prepainted
- Easy Drop-In Fit

HO Scale



- 933-1130 Pulpwood Load \$12.98
- Fits Sieco Pulpwood Car (932-5780 series)



- 933-1131 Pulpwood Load \$12.98
- Fits Canadian Bulkhead Flatcar (932-40050 series)



- 933-1132 Scrap Load pkg(2) \$12.98
- Fits AAR Mill Gondola (932-41900 series)



- 933-1133 Rip Rap Load pkg(2) \$11.98
- Fits Difco® Dump Car (932-7900 series)

N Scale



- 933-800 Pulpwood Load \$11.98
- Fits Sieco Pulpwood Car (932-8900 series)



- 933-801 Aggregate Load pkg(2) \$9.98
- Fits Greenville 2-Bay Hopper (932-50100 series)



- 933-802 N Rip Rap Load pkg(2) \$9.98
- Fits Difco Dump Car (932-8600 series)

NEW HO Life-Like High Iron & Burnin' Rubber September Delivery \$159.99

- Two Complete Sets: Racing & Train
- 51 x 57-1/2" Combined Track Oval
- Includes Race/Train Intersection Track
- Power-Loc™ & Dura-Loc™ Track
- Two UL-Listed Power Packs
- Easy Assembly
- F7 Locomotive, 2 Freight Cars & Caboose
- Includes 2 High-Performance Race Cars

433-9142 High Iron & Burnin' Rubber Race & Train Set

NEW HO Cornerstone® Rural USA

August Delivery

- All-New Models
- North American Designs
- Use Individually or Combine for Rural Scenes
- Fit All Popular Eras

Plastic Kits



- 933-3330 Meadowhead Barn \$34.98



- 933-3332 Concrete-Style Silo \$12.98



- 933-3333 Lancaster Farmhouse \$39.98



High Iron & Burnin' Rubber 932-10123



Cornerstone® Rural USA

Resin Kit



- 933-3331 Fieldstone Barn Base & Ramp \$19.98

Lasercut Wood Kits



- 933-3334 Machine Shed \$24.98



- 933-3335 Hen House \$16.98



- 933-3336 Corn Crib \$26.98



- 933-3337 Hog House & Pen \$24.98



- 933-3338 Pump House \$14.98



- 933-3341 Sparrow Creek Barn \$34.98



- 933-3342 Farm Shed Lean-To \$15.98

ADVANCE RESERVATIONS

Reserve now for future delivery
(visit walthers.com for delivery updates).



Motorized 90° Turntable w/DCC 933-2849



Motorized 130° Turntable w/DCC 932-2850



Motorized 130° Turntable w/DCC 932-2616

NEW HO N Cornerstone® Built-ups

Turntables
October Delivery
\$349.98

- Now with Programmable DCC Address
- Fully Assembled & Ready to Use
- Programmable Indexing for Up to 60 Positions
- Motorized Gear Drive
- Weathered One-Piece Plastic Pit
- Great for DCC Layouts - Controller Included

HO Scale

933-2849 Motorized 90° Turntable w/DCC

932-2850 Motorized 130° Turntable w/DCC

N Scale

932-2616 Motorized 130° Turntable w/DCC

WALTHERS™

*Today's Reference...
for Years to Come.*



There's something special about Walther's Reference Books. The smell of ink, the feel of crisp paper. How about the thrill of seeing a must-have item or being inspired to start a new project? Maybe it's the memories of models built in the past.

For decades, Reference Books have brought model railroad plans and dreams to life. With their unique mix of products, photos, modeling tips and more, they're a must-have planning guide today, a great source of research information and a fun look-back in future years.

The 2011 books are coming soon so reserve your copy today.

WALTHERS 2011 HO REFERENCE BOOK
913-211 September Delivery \$15.98

WALTHERS 2011 N&Z REFERENCE BOOK
913-251 October Delivery \$15.98

*To order your book, see your participating dealer,
call us at 1-800-487-2467 or visit walthers.com*

©2010 Wm. K. Walther's, Inc.

Find a Hobby Shop Near You! Visit walthers.com or call 1-800-487-2467

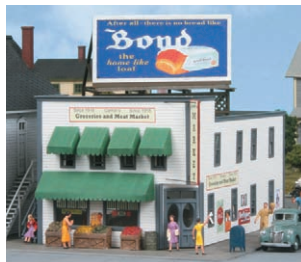
NEW AT WALTHERS



NEW HO Porsche 914
Wiking
781-79202 Silver Metallic
Reg. Price: \$20.99 Sale: **\$17.98**



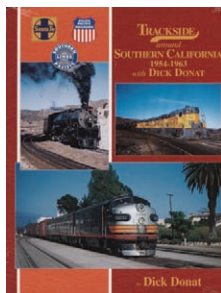
NEW N Camping Set
Busch
189-8120 Camping Set
Reg. Price: \$8.99 Sale: **\$6.98**



NEW HO Garner's Market - Kit
American Model Builders
152-189 Garner's Market
Reg. Price: \$62.95 Sale: **\$54.98**



Limited Quantities Available
NEW O 34' Composite Hopper
MTH Premier
507-2097251 C&O
507-2097252 Wabash
507-2097254 Virginian
Price: **\$54.95**



NEW Trackside Around Southern California
Morning Sun Books
484-1367 1954-1963
Reg. Price: \$59.95 Sale: **\$53.98**



NEW HO EMD GP20
Model Power
490-96850 ATSF
490-96851 PRR
490-96852 UP
490-96853 BN
490-96855 Hudson Bay
Reg. Price: \$47.98 Sale: **\$36.98**



NEW Lighted Magnifier
General Hardware
285-800543
Lighted Magnifier
Reg. Price: \$19.99
Sale: **\$17.98**



NEW O Depot Workers & Accessories
Woodland Scenics® Scenic Accents®
785-2757 Depot Workers & Accessories
Reg. Price: \$22.99 Sale: **\$19.98**



Limited Quantities Available
NEW HO GP39-2 Phase I
Atlas Trainman®
751-10000487 BNSF #2776
751-10000488 D&H #7610
751-10000492 UP #1229
751-10000493 UP #1234
Reg. Price: \$99.95 Sale: **\$81.98**



NEW HO Hay Wagon
Busch
189-44930 Hay Wagon
Reg. Price: \$16.99 Sale: **\$13.98**



NEW HO Music to My Ears
Woodland Scenics Scenic Accents
785-1951 Music to My Ears
Reg. Price: \$19.99 Sale: **\$15.98**



NEW HO USRA 0-6-0 w/Slope Tender
Bachmann
160-50615 PRR #3234
Reg. Price: \$79.00 Sale: **\$57.98**



NEW N Treehouse - Kit
Vollmer
770-7755 Treehouse
Reg. Price: \$39.99 Sale: **\$32.98**



NEW HO Firestone Animated Neon Billboard
Micro Structures
502-5381 Firestone
Reg. Price: \$49.95 Sale: **\$44.98**



NEW HO Grand Gazebo - Assembled
Woodland Scenics Built-&-Ready Landmark Structures™
785-5035 Grand Gazebo
Reg. Price: \$59.99 Sale: **\$49.98**



NEW HO 0-4-0 Old Time "Fat Boy" w/Tender
Model Power
490-96781 PRR
490-96782 SOU
490-96783 CP
490-96785 Pennzoil
Reg. Price: \$46.98 Sale: **\$35.98**



NEW 12 Piece File Set
General Hardware
285-707475 12 Piece File Set
Reg. Price: \$23.29 Sale: **\$19.98**



NEW HO Animated Fountain
Viessmann
769-5016 Animated Fountain
Reg. Price: \$70.99 Sale: **\$59.98**



NEW N Trinity RD-4 Hopper
Fox Valley Models
282-8301 CNW
Reg. Price: \$18.95 Sale: **\$16.98**

All products featured in this catalog were in stock at press time. Because of increased demand for sale-priced items and limited quantities available, some may be out of stock following the printing of this catalog. You can find out if any item is available, or locate dealers who have recently ordered out of stock items by visiting walters.com. We reserve the right to correct errors, change prices and modify designs without notice and without obligation to previous purchasers. All rights reserved.

Prices and delivery dates shown were accurate at press time, for updates visit walters.com.

©2010 Wm. K. Walther, Inc. All prices are listed in U.S. dollars. Prices subject to change without notice.

Select products are not shippable to California.

CSX proprietary marks used by permission of CSX Transportation, Inc.

Accumate® couplers are made under license from Accurail, Inc.

Products bearing American Refrigerator Transit Company, ART, Chicago & North Western Railway, Chicago & North Western System, Chicago & North Western, CNW, C&NW, Denver & Rio Grande Western, DRGW, D&RG, D&RGW, Rio Grande, Katy Railroad, The Katy, Missouri-Kansas-Texas, MKT, M-K-T, Missouri Pacific Lines, Missouri Pacific, Mo-Pac, MP, Pacific Fruit Express Company, Pacific Fruit Express, PFE, Southern Pacific Railroad Corporation, Southern Pacific Lines, Southern Pacific, SP, St. Louis Southwestern, SSW, Cotton Belt, Cotton Belt Route, Texas & Pacific, T&P, TP, Union Pacific Railroad Company, Union Pacific Railroad, Union Pacific, UP, Union Pacific Fruit Express, UPFE, Western Pacific & WP marks are made under trademark license from Union Pacific Railroad Company.

PROTO 2000® HERITAGE

USRA 0-6-0 ~ STEAM LOCOMOTIVE

HO SCALE



PROTO FASTFACTS™

In Service: 1918-1950s

Primary Assignments: Yard and industrial switchers, some transfer work.

As the US entered WWI, many railroads found their switchers weren't up to the job, leading to the introduction of a new 0-6-0 designed by the United States Railroad Administration (USRA) in 1918. Larger and more powerful, these locos could handle all types of switching and some transfer work.

Production ended in 1919 with 255 built and in service on 28 railroads, but the design was copied into the 1920s.

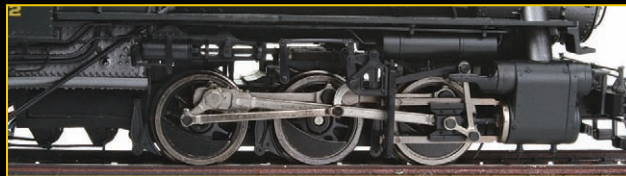
- New Numbers & Roadname
- Slow Speed Less than 3 Scale Miles Per Hour
- Separate Driver set w/Traction Tires for Maximum Pulling Power
- Loco & Tender Electrical Pickup
- Nickel-Silver Plated RP-25 Wheels

USRA 0-6-0 – 4th Series

New Numbers & Roadname

Sound & DCC \$349.98 | Standard DC \$249.98

September 2010 Delivery



- Proto MAX™ Metal Knuckle Couplers
- History Booklet and Certificate of Quality
- Sound & DCC or Standard DC Versions

Select sounds can be operated with standard DC power pack; all sound features can be operated with DCC controllers. Sound features include: Realistic Exhaust, Whistle, Bell, Squealing Brakes, Doppler Effect, Air Let Off, Generator Whine and Trailer, which mutes Whistle & Bell for Double-Heading

B&O

920-60300 #374 Sound & DCC
920-67300 #379 Standard DC

CB&Q

920-60301 #502 Sound & DCC
920-67301 #504 Standard DC

NKP – New Roadname!

920-60302 #384 Sound & DCC
920-67302 #383 Standard DC

PRR

920-60303 #7011 Sound & DCC
920-67303 #8935 Standard DC

Painted-Unlettered

920-60304 Sound & DCC
920-67304 Standard DC

Find a hobby shop near you!
Call 1-800-487-2467 or
visit walthers.com

Prices and delivery date shown were accurate at press time, for updates visit walthers.com.
Preproduction models shown, details and colors may vary.

PROTO 2000™
HERITAGE
STEAM COLLECTION
From Walthers™



HO EMD E7 Phase I

PROTO 2000® from Walthers™. Features detailed body, trucks and underframe, helical gears, five-pole skew-wound motor and Proto MAX™ metal knuckle couplers.

A-A Set w/Sound & DCC

920-40960 GN #510A & #511A (orange, green, yellow)

Reg. Price: \$479.98 Sale: \$369.98

A-B Set w/Sound & DCC

920-40964 NYC #4008 & #4104 (Lightning Stripe two-tone gray)

Reg. Price: \$479.98 Sale: \$369.98

A Unit w/Sound & DCC

920-40959 CNW¹ #5020B (yellow, green)

920-40969 SP¹ #6003A (Daylight Scheme)

920-40972 UP¹ #986 (yellow, gray, red)

Reg. Price: \$249.98 Sale: \$189.98

B Unit w/Sound & DCC

920-40973 UP¹ #994B (yellow, gray, red)

920-40978 Undecorated

Reg. Price: \$249.98 Sale: \$189.98

A-A Set Standard DC

920-47960 GN #510A & #511A (orange, green, yellow)

Reg. Price: \$329.98 Sale: \$259.98

A-B Set Standard DC

920-47964 NYC #4020 & #4106 (Lightning Stripe two-tone gray)

Reg. Price: \$329.98 Sale: \$259.98

A Unit Standard DC

920-47957 B&O #1415 (blue, gray, yellow, black)

920-47969 SP¹ #6004A (Daylight Scheme)

920-47972 UP¹ #989 (yellow, gray, red)

Reg. Price: \$169.98 Sale: \$129.98

B Unit Standard DC

920-47973 UP¹ #996B (yellow, gray, red)

Reg. Price: \$169.98 Sale: \$129.98



HO EMD E7 Phase II 20th Century Limited

PROTO 2000 from Walthers. Features include 12-wheel electrical pickup, dual machined brass flywheels and working diaphragms. Available with sound and DCC or as standard DC. Both A and B units are powered.

A-B Set w/Sound & DCC

920-40993 NYC #4024 & #4108

920-40995 NYC #4025 & #4109

Reg. Price: \$499.98 Sale: \$429.98

A Unit w/Sound & DCC

920-40994 NYC #4028

920-40996 NYC #4029

Reg. Price: \$259.98 Sale: \$219.98

A-B Set Standard DC

920-47993 NYC #4026 & #4110

920-47995 NYC #4027 & #4111

Reg. Price: \$349.98 Sale: \$299.98

A Unit Standard DC

920-47994 NYC #4030

920-47996 NYC #4031

Reg. Price: \$179.98 Sale: \$149.98



NEW HO EMD F7

PROTO 2000 from Walthers. Features 14:1 gear ratio, helical gears, five-pole skew-wound motor and numerous prototype-specific details. Both A & B units are powered. Available with or without sound and DCC.

A-B Set w/Sound & DCC

920-40672 B&O #4537 & 5484

920-40676 MILW #68A & 73B

920-40680 RDG #270A & 270B

920-40682 SOO #2224A & 502C (maroon, Dulux Gold)

920-40684 WM #57 & #401

Price: \$479.98

A Unit w/Sound & DCC

920-40673 B&O #4542

920-40675 KCS #76D (red, black)

920-40683 SOO #2227B (maroon, Dulux Gold)

920-40685 WM #61

Price: \$249.98

A-B Set Standard DC

920-47672 B&O #4546 & #5453

920-47674 KCS #72A & #72B

920-47682 SOO #2227A & 503C (maroon, Dulux Gold)

920-47684 WM #62 & #403

Price: \$329.98

A Unit Standard DC

920-47673 B&O #4555

920-47675 KCS #73D

920-47683 SOO #2224B (maroon, Dulux Gold)

Price: \$169.98



HO EMD F3

PROTO 2000 from Walthers. Features 14:1 gear ratio, five-pole skew-wound motor, authentic bulldog nose and Proto MAX metal knuckle couplers.

A Unit w/Sound & DCC

920-41238 NYC #1623

Reg. Price: \$229.98 Sale: \$199.98

A-B Set Standard DC

920-48237 NYC #1619 & 2411

Reg. Price: \$299.98 Sale: \$259.98

A Unit Standard DC

920-48238 NYC #1628

Reg. Price: \$159.98 Sale: \$119.98



HO USRA 2-8-2

PROTO 2000 Heritage Steam Collection from Walthers. Features 16-wheel drive, 24-wheel electrical pickup, dual flywheels and Proto MAX metal knuckle couplers.

With Sound & DCC

920-60202 Clinchfield #739

Reg. Price: \$549.98 Sale: \$379.98

¹Union Pacific licensed product



NEW HO EMD SW9/1200 w/Sound & DCC

PROTO 2000 from Walthers. Equipped with QSI sound, five-pole skew-wound armature motor, heavy die cast chassis and LED headlights. 920-41408 CNW¹ #1203 920-41409 CNW¹ #1208 Price: \$239.98



NEW HO EMD GP15-1

PROTO 1000™ from Walthers. DCC-ready model features 14:1 gear ratio, five-pole skew-wound can motor, Proto MAX metal knuckle couplers and RP-25 metal wheels. 920-35082 MP¹ #1615 (Farr Air Filters) Price: \$99.98



HO GP9M

Walthers Trainline®

931-101 BN #1709 (green, white)

931-102 UP¹ #289 (yellow, gray, red)

Reg. Price: \$44.98 Sale: \$29.98

WHY A SWITCHER?



While less glamorous than the burly units wheeling long trains on the mainline, EMD SW9/1200 and SW8/900 switchers are just as important. Designed to get the job done, they're ideal for yard and industrial work and short runs branches.

Changing Times & Changing Names

The continent's railroads were busy converting from steam to diesel power when SW8s and SW9s came along in 1950 and 1951. 800-horsepower SW8s were perfect for moving cars at large industries and in yards. The 1,200-horsepower SW9 easily replaced steam switchers in yard and transfer service, and plenty did just that. SW8s and SW9s looked similar, but the SW8 had only one stack. 371 SW8s and 815 SW9s were built through 1953.

In 1954, EMD replaced its 567B prime mover with the upgraded 567C. Along with the upgrade came new switcher designations—the SW8 became the 900-horsepower SW900 and the SW9 became the SW1200. Externally the new units looked almost identical except for one less battery

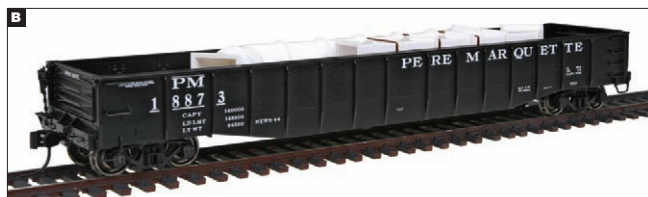
box louver (five vs. six) and some new units were built with old louvers. By production's end in November 1965 and May 1966 respectively, 357 SW900s and 1,024 SW1200s were built. With 728 SW8/900 and 1800 SW9/1200s on the road, it's no wonder that many are still working in 2010.

Little Units for Heavy Work

Designed with versatility in mind, the scrappy little units were at home in classification yards or on long transfer runs. Unlike larger, longer road units like the GP9, SWs could handle sharp curves and bad track on city industrial track. Deep within steel mills, many are still at work shuffling hot metal and slag cars on bumpy spurs between buildings. Thanks to rebuilds and overhauls, hundreds still hold down jobs at grain elevators, ethanol plants, paper mills and other industries across the continent.

More Power When Needed

On some roads multiple-unit (MU) operation was an option if more power was needed. Some lines ran theirs as road units.



Several coal roads like the Cambria & Indiana used multi-unit consists on long coal trains from mines to breakers and interchange yards. Out west, Canadian Forest Products, Simpson Timber, Pickering Lumber and others hauled log trains on twisting lines through the woods.

In Canada, CN and CP used SW1200s equipped with road trucks on long-distance branchline freights and mixed trains because they were easy on light-railed lines in the prairies.

A. NEW HO PROTO 2000® EMD SW9/1200 - Chessie System/B&O
920-41405 #9610 \$239.98

More roadnames available at walthers.com

B. HO PROTO 2000 52'6" Mill Gondola w/Load - Pere Marquette
Different roadnumber shown
920-54119 | \$34.98

More roadnames plus Time-Saver® kits available at walthers.com

C. HO Cornerstone® Engineering Office Kit
933-2967 | \$44.98

Be sure to see the new PROTO 2000 SW8/900 on page 4.



Limited Quantity Available

NEW HO San Francisco F Line PCC Streetcar

Bowser. Features injection-molded plastic body, window glass, dummy roof poles and operating headlight, plus a can motor with flywheel. 6-12557 Cincinnati Street Railway #1057

Reg. Price: \$124.95 Sale: **\$109.98**



NEW HO USRA 0-6-0 w/Slope Tender

Bachmann. Features pre-painted and lettered plastic body, operating headlight, smoke and E-Z Mate® knuckle couplers. 160-50615 PRR #3234

Reg. Price: \$79.00 Sale: **\$57.98**



HO GE 70-Tonner w/DCC

Bachmann. Features all-metal chassis, worm gear, flywheel drive, five-pole motor and idler gear box.

160-60609 Painted, Unlettered (red)

Reg. Price: \$72.00 Sale: **\$51.98**



NEW HO GP38-2

Bachmann

160-61707 CN #4723

Reg. Price: \$59.00 Sale: **\$42.98**



NEW HO EMD GP40

Bachmann

160-63505 CR #3072

160-63508 WM #3799 (red, white, black)

Reg. Price: \$47.00 Sale: **\$33.98**



HO USRA Light 2-10-2 w/DCC

Bachmann Spectrum®. DCC-equipped loco features include separately applied metal parts, see-through frame, RP-25 wheels and E-Z mate Mark II couplers.

160-83311 SAL #2491

Reg. Price: \$240.00 Sale: **\$169.98**



HO 4-4-0 American (Modern) w/DCC

Bachmann Spectrum. DCC-equipped model features five-pole skew-wound motor, flywheels, hand applied details and accurate paint and lettering.

160-83404 Maryland & Pennsylvania #5 w/Wood Cab

160-83405 Maryland & Pennsylvania #6 w/Steel Cab

160-83406 SOU (green)

160-83401 Unlettered w/Wood Cab

160-83402 Painted, Unlettered w/Steel Cab

Reg. Price: \$300.00 Sale: **\$219.98**



HO GE Dash 8-40CW w/DCC

Bachmann Spectrum. DCC decoder-equipped loco features die cast frame, five-pole skew-wound motor, dual flywheels, 12-wheel drive and E-Z Mate Mark II couplers.

160-83501 Undecorated

Reg. Price: \$165.00 Sale: **\$119.98**



HO 0-6-0 "Goat" Camelback Type Switcher w/Tender B7 & B8A

Mantua

455-389001 RDG

455-389003 SOU

Reg. Price: \$99.98 Sale: **\$83.98**



HO Porter Hustler

Model Power

490-96706 BN

Reg. Price: \$35.98 Sale: **\$29.98**



NEW HO 0-4-0 Old Time "Fat Boy" w/Tender

Model Power

490-96781 PRR

490-96782 SOU

490-96783 CP

490-96785 Pennzoil

Reg. Price: \$46.98 Sale: **\$35.98**



HO 2-6-0 w/Tender

Model Power

490-96720 ATSF

Reg. Price: \$48.98 Sale: **\$39.98**



HO F2-A

Model Power

490-96800 ATSF

490-96802 Chessie

490-96804 SP

490-96806 Amtrak

Reg. Price: \$42.98 Sale: **\$34.98**



NEW HO EMD GP20

Model Power

490-96850 ATSF

490-96851 PRR

490-96852 UP

490-96853 BN

490-96855 Hudson Bay

Reg. Price: \$47.98 Sale: **\$36.98**



NEW HO EMD SD70ACe

MTH. Proto-Sound 3.0 equipped loco features metal chassis and handrails, RP-25 metal wheels, 5-pole flywheel-equipped motor, onboard DCC receiver and operating lights.

507-8020081 WP

Price: **\$249.95**



Limited Quantities Available

NEW HO GP39-2 Phase I

Atlas Trainman®. Standard DC model features five-pole skewed-armature motor, die cast underframe, NMRA 8-pin plug for DCC and Accumate® couplers.

751-10000487 BNSF #2776

751-10000488 D&H #7610

751-10000492 UP #1229

751-10000493 UP #1234

Reg. Price: \$99.95 Sale: **\$81.98**



NEW HO Big Sky Express Train Set

Walthers™ Trainline®. Leading the way is a GP9 diesel with working headlight. You'll also get a caboose, stock car, tank car, boxcar and gondola plus a stock pen and cattle. Set includes 36 x 54" 91.4 x 137.1cm oval of Bachmann EZ-Track® and UL-listed power pack.

931-860 ATSF
931-861 BNSF
931-862 CP
931-863 CSX
931-864 NS
931-865 UP†

Price: **\$159.98**



HO Rail Master Train Set

Life-Like from Walthers. Features F40PH diesel locomotive with working headlight, hopper, refrigerator car, caboose, 45 x 38" 114.3 x 96cm oval of Power-Loc™ Track, power pack and accessories. 433-8608 Rail Master
Reg. Price: **\$79.99**
Sale: **\$49.98**



HO Santa Fe Flyer Train Set

Life-Like from Walthers. Features F7 diesel locomotive with working headlight, five freight cars, 56 x 38" track oval, UL-approved power pack, passenger station, vehicles, trees, signs, log dump station and more. 433-8660 Santa Fe Flyer
Reg. Price: **\$115.99**
Sale: **\$71.98**



HO Freight Runner Train Set

Life-Like from Walthers. A GP38-2 diesel leads two boxcars, a hopper, tank car, stock car and a caboose around a giant 89 x 38" 2.26 x 0.9m figure 8 of Power-Loc track. Set includes a stock yard and other accessories. 433-9100 Freight Runner
Reg. Price: **\$149.99**
Sale: **\$69.98**



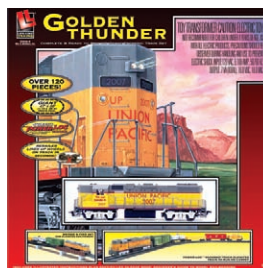
HO Rolling Rails Train Set

Life-Like from Walthers. Leading the way is an F7 diesel with working headlight, four freight cars and a Santa Fe caboose. A kid-powered log dump and log flatcar, station platform, trees and automobiles add to the fun. 433-8693 Rolling Rails
Reg. Price: **\$118.98**
Sale: **\$54.98**



HO Diesel Driver Train Set

Life-Like from Walthers. Union Pacific GP38-2 diesel pulls two boxcars, a hopper, a stock car, a log dump car with logs and matching 8-wheel caboose around a 65 x 47" 1.65 x 1.19m Power-Loc track layout. Numerous accessories and a UL-listed power pack are included. 433-8852 Diesel Driver
Reg. Price: **\$193.99**
Sale: **\$119.98**



HO Golden Thunder Train Set

Life-Like from Walthers. Features a Union Pacific GP38-2 diesel locomotive, stock car, gondola, tank car, boxcar, caboose, 47 x 38" 1.19m x .96m oval of Power-Loc Track, numerous accessories and UL-listed power pack. 433-8853 Golden Thunder
Reg. Price: **\$97.99**
Sale: **\$59.98**



HO Thundering Rails Train Set

Life-Like from Walthers. Features an F7 diesel, six colorful freight cars, a caboose, a 74 x 38" 1.8 x 0.9m oval of Power-Loc track and accessories. 433-9102 Thundering Rails
Reg. Price: **\$128.99**
Sale: **\$79.98**



HO Trans America Express Train Set

Life-Like from Walthers. F7 diesel pulls six freight cars around a 47 x 65" 1.1 x 1.6m double track oval of Power-Loc track. Also includes two working switch tracks, kid-powered log dump with log car and numerous other accessories. 433-9103 Trans America Express
Reg. Price: **\$164.99**
Sale: **\$99.98**



HO Rail Runner Train Set

Life-Like from Walthers. Features GP38-2 ATSF diesel locomotive, four freight cars, matching caboose, 65 x 38" Power-Loc track oval, UL-listed power pack and accessories. 433-8635 Rail Runner
Reg. Price: **\$119.99**
Sale: **\$73.98**



HO Thunderbolt Train Set

Bachmann. A GP40 diesel with operating headlight leads a boxcar, tank car and steel caboose around a 36" circle of E-Z Track. Set includes power pack and instructions. 160-612 Thunderbolt
Reg. Price: **\$99.00**
Sale: **\$71.98**



HO Emily's Coach

Bachmann
160-76042 Emily's Coach
Reg. Price: **\$16.00** Sale: **\$11.98**

†Union Pacific licensed product

WALTHERS™

The Legendary Super Chief is Back and Better than Ever!



Flashing across the desert floor the *Super Chief* rolls again in HO Scale — *now with Walther's exclusive "stainless steel" finish, factory-installed grab irons and tinted windows* — plus an all-new "Regal" 4-4-2 sleeper and matching PROTO 2000® Santa Fe 16 Class F3s!

Reserve your *Super Chief* today — call 1-800-487-2467 to find a shop near you or visit walthers.com for more information.

- **New Real Metal Finish Simulates Stainless Steel**
- **ALL Grab Irons Factory Installed**
- **All-New "Regal" Series 4-4-2 Sleeper**
- **Prototypically Accurate Window Tinting**



All-new Tooling – first time in plastic!

P-S "Regal" Series 4-4-2 Sleeper
932-9729 | \$64.98 | April 2011



Budd "Pine" Series 10-6 Sleeper
932-9721 | \$64.98 | October 2010



Budd 73' Baggage Car
932-9722 | \$64.98 | November 2010



P-S 29-Seat Dormitory-Lounge
932-9724 | \$64.98 | December 2010



P-S 36-Seat Diner
932-9723 | \$64.98 | January 2011



P-S "Pleasure Dome" Bar-Lounge
932-9726 | \$74.98 | February 2011



Budd 63' Railway Post Office
932-9727 | \$64.98 | March 2011



P-S "Vista" Series Observation-Lounge
932-9728 | \$69.98 | May 2011

PROTO 2000 EMD F3 with Real Metal Finish

- **Features Specific Details found on Santa Fe 16 Class F3 Locomotives:**

- * Leslie 5-Chime Airhorn
- * Inertial Air Filter
- * "Can" Style Radio Antenna
- * "Stainless" Air Grilles

- **14:1 Gear Ratio for Easy Multiple-Unit Operations**
- **PROTO-Max™ Metal Knuckle Couplers**

A-B Sets

\$459.98 Sound & DCC | \$309.98 Standard DC
920-41270 #34L & #34A w/Sound & DCC
920-41271 #34C & #34B w/Sound & DCC
920-48270 #36L & #36A Standard DC
920-48271 #36C & #36B Standard DC

A Units Only

\$259.98 Sound & DCC | \$169.98 Standard DC
920-41272 #31L w/Sound & DCC
920-41273 #31C w/Sound & DCC
920-48272 #33L Standard DC
920-48273 #33C Standard DC



Prices and delivery dates shown were accurate at press time; for updates, visit walthers.com.

Preproduction model photo and sketches shown for illustration purposes only, some colors and details may vary. ©2010 Wm. K. Walther's, Inc.

HO SCALE | PASSENGER CARS



HO GACX 50' Wood Express Reefer w/Pullman Trucks

Walthers® Rolling Stock
932-5473 American Refrigerator Transit Co.[†]
932-5491 REA (white lettering large logo)
932-5485 Railway Express Agency #3
932-5486 Union Refrigerator Transit (orange)
Reg. Price: \$29.98 Sale: **\$19.98**



NEW HO Pennsylvania Class B60B Baggage Car

Walthers Rolling Stock
932-5835 PRR (10/52-2/54 Non-Messenger)
932-5836 PRR (2/54-9/62 Non-Messenger)
932-5837 PRR (Modern w/Keystone, Non Messenger)
932-5838 PC (PC Green, White Logo)
Price: **\$41.98**



HO 50' Railway Express Agency Riveted Steel Express Reefer

Walthers Rolling Stock
932-6243 REA (Chromate Green w/REA logo herald)
932-6249 REA (Striped Scheme) #6104
932-6240 Undecorated
Reg. Price: \$29.98 Sale: **\$14.98**



HO Budd Streamlined 46-Seat Coach

Walthers Rolling Stock
932-6309 CP
932-6310 ACL
932-6311 SOU
Reg. Price: \$39.98 Sale: **\$24.98**



HO Budd Streamlined Diner

Walthers Rolling Stock
932-6325 ATSF
932-6326 PRR
932-6327 CB&Q
932-6330 ACL
Reg. Price: \$39.98 Sale: **\$24.98**



HO Budd Streamlined 73' Baggage Car

Walthers Rolling Stock
932-6412 Rock Island
Reg. Price: \$39.98 Sale: **\$19.98**



HO Budd Smooth-Side Great Dome Lounge

Walthers Rolling Stock
932-6521 GN (Big Sky Blue)
932-6523 CB&Q-Owned (orange, green w/decals)
Reg. Price: \$54.98 Sale: **\$29.98**



HO P-S Streamlined 10-5 Sleeper

Walthers Rolling Stock
932-6753 PRR (Through Sleeper for SLSF Meteor, silver, red, PRR Lettering)
Reg. Price: \$44.98 Sale: **\$27.98**



HO P-S Plan #7484 64-Seat Coach

Walthers Rolling Stock
932-6786 NP
Reg. Price: \$44.98 Sale: **\$23.98**

More Savings!

932-16783 L&N
932-16786 PC
Reg. Price: \$44.98 Sale: **\$22.98**

Save on Undecorated Too!

932-6799 Undecorated
Reg. Price: \$44.98 Sale: **\$19.98**



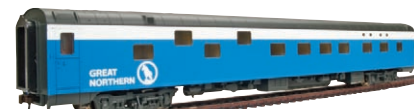
HO P-S 48-Seat Streamlined Diner

Walthers Rolling Stock
932-6834 MP[†]
932-6835 L&N
932-6836 Wabash
Reg. Price: \$44.98 Sale: **\$19.98**



HO P-S Plan #4140 10-6 Streamlined Sleeper

Walthers Rolling Stock
932-6857 CN
Reg. Price: \$44.98 Sale: **\$19.98**



HO P-S Streamlined 7-4-3-1 Sleeper

Walthers Rolling Stock
932-9055 GN (Big Sky Blue)
932-9056 BN (Hockey Stick, green, white)
932-9059 Amtrak® (Phase I)
Reg. Price: \$44.98 Sale: **\$19.98**



NEW HO P-S Super Dome

Walthers Rolling Stock
932-6881 CNW[†]
932-6882 CN
932-6883 VIA Rail Canada
932-6884 Chessie Safety Express
Price: **\$69.98**



HO P-S 7-4-3-1 Sleeper

Walthers Rolling Stock
932-9057 Empire Builder SP&S- or CB&Q-Owned Car
Reg. Price: \$44.98 Sale: **\$19.98**



HO ACF Coffee Shop Lounge

Walthers Rolling Stock
932-9065 Empire Builder SP&S- or CB&Q-Owned Car
Reg. Price: \$49.98 Sale: **\$22.98**



HO ACF 36-Seat Diner

Walthers Rolling Stock
932-9083 Empire Builder SP&S- or CB&Q-Owned Car
Reg. Price: \$49.98 Sale: **\$24.98**

*Faster Check-Out Options
at www.walthers.com!*



HO ACF Streamlined Coffee Shop Lounge

Walthers Rolling Stock
932-9064 Amtrak (Phase I)
932-9275 GN
Reg. Price: \$49.98 Sale: **\$22.98**



HO ACF Streamlined Baggage-Dormitory

Walthers Rolling Stock
932-9069 Amtrak (Phase I)
Reg. Price: \$49.98 Sale: **\$24.98**

[†]Union Pacific licensed product



HO ACF Streamlined 36-Seat Diner
Walthers™ Rolling Stock
932-9081 BN (Hockey Stick green, white)
Reg. Price: \$49.98 Sale: **\$24.98**



HO P-S Streamlined 6-4-1 Observation
Walthers Rolling Stock
932-9086 BN (Hockey Stick Cascade Green, white)
Reg. Price: \$49.98 Sale: **\$24.98**



HO Budd Streamlined 46-Seat Vista Dome Coach
Walthers Rolling Stock
932-9094 GN (Late Cascade Green, white)
Reg. Price: \$49.98 Sale: **\$24.98**



HO 1955 Twin Cities Hiawatha Express Car #1
Walthers Rolling Stock
932-9202 MILW #1330-36 w/Conductor's Window
Reg. Price: \$54.98 Sale: **\$37.98**



HO 1955 Twin Cities Hiawatha Coach #535 Series
Walthers Rolling Stock
932-9208 MILW Coach #535 Series
Reg. Price: \$54.98 Sale: **\$37.98**



HO MILW Hiawatha Railway Post Office
Walthers Rolling Stock
932-9210 Undecorated
Reg. Price: \$54.98 Sale: **\$23.98**



HO MILW Hiawatha 48-Seat Diner
Walthers Rolling Stock
932-9230 Undecorated
Reg. Price: \$54.98 Sale: **\$23.98**



HO MILW Hiawatha 30-Seat Parlor Car
Walthers Rolling Stock
932-9250 Undecorated
Reg. Price: \$54.98 Sale: **\$23.98**



HO MILW Hiawatha Skytop Lounge
Walthers Rolling Stock
932-9260 Undecorated
Reg. Price: \$54.98 Sale: **\$33.98**



NEW HO UP City P-S Plan #4200 5-2-2 Sleeper
Walthers Rolling Stock
932-9510 UP[®] "Ocean..." Series
932-9511 Undecorated
Price: **\$64.98**



NEW HO UP City ACF Lot #3032 48-Seat Diner
Walthers Rolling Stock
932-9540 UP[®] #4800-4816
932-9541 Undecorated
Price: **\$64.98**



HO Pullman Heavyweight 12-1 Sleeper
Walthers Rolling Stock
932-10005 UP[®] (gray)
932-10012 MILW
932-10014 SOO
Reg. Price: \$49.98 Sale: **\$19.98**



HO Pullman Heavyweight 6-3 Sleeper
Walthers Rolling Stock
932-10414 ACL
932-10415 Rock Island
932-10416 Pullman (2-Tone Gray)
Reg. Price: \$49.98 Sale: **\$19.98**



HO ACF Heavyweight 70' Baggage-Express
Walthers Rolling Stock
932-10518 MP[®]
932-10520 Nashville, Chattanooga & St. Louis
Reg. Price: \$49.98 Sale: **\$29.98**



HO Pullman Heavyweight Solarium Observation
Walthers Rolling Stock
932-10451 Pullman
932-10452 ATSF
932-10453 CB&Q
932-10456 CNW[®]
932-10459 SP[®]
Reg. Price: \$49.98 Sale: **\$19.98**



HO Pullman Heavyweight 10-1-2 Sleeper
Walthers Rolling Stock
932-10556 CNW[®]
932-10562 MILW
932-10563 GN
932-10564 SOO
932-10565 ACL
932-10566 L&N
932-10567 IC
932-10568 SOU
932-10569 LV
Reg. Price: \$49.98 Sale: **\$19.98**



HO Pullman Heavyweight 10-1-2 Sleeper
Walthers Rolling Stock
932-10556 CNW[®]
932-10562 MILW
932-10563 GN
932-10564 SOO
932-10565 ACL
932-10566 L&N
932-10567 IC
932-10568 SOU
932-10569 LV
Reg. Price: \$49.98 Sale: **\$19.98**



HO Superliner® II Coach w/Plated Finish
Walthers Rolling Stock
932-16102 Amtrak[®] (Phase IVb)
Reg. Price: \$59.98 Sale: **\$45.98**



HO Superliner II Sleeper w/Plated Finish
Walthers Rolling Stock
932-16111 Amtrak (Phase IV)
Reg. Price: \$59.98 Sale: **\$41.98**

[®]Union Pacific licensed product

HO SCALE | PASSENGER CARS



HO Superliner® II Sleeper w/Plated Finish
Walthers™ Rolling Stock
932-16112 Amtrak® (Phase IVb)
Reg. Price: \$59.98 Sale: **\$45.98**



HO Superliner II Sightseer Lounge w/Plated Finish
Walthers Rolling Stock
932-16121 Amtrak (Phase IV)
Reg. Price: \$59.98 Sale: **\$41.98**



HO Superliner I Coach w/Plated Finish
Walthers Rolling Stock
932-16161 Amtrak (Phase II)
932-16162 Amtrak (Phase III)
932-16163 Amtrak (Phase IV)
Reg. Price: \$59.98 Sale: **\$41.98**
Phase IVb Also on Sale!
932-16164 Amtrak (Phase IVb)
Reg. Price: \$59.98 Sale: **\$45.98**



HO Superliner I Sleeper w/Plated Finish
Walthers Rolling Stock
932-16171 Amtrak (Phase II)
932-16172 Amtrak (Phase III)
932-16173 Amtrak (Phase IV)
Reg. Price: \$59.98 Sale: **\$41.98**
Phase IVb Also on Sale!
932-16174 Amtrak (Phase IVb)
Reg. Price: \$59.98 Sale: **\$45.98**



HO Superliner I Diner w/Plated Finish
Walthers Rolling Stock
932-16181 Amtrak (Phase II)
932-16182 Amtrak (Phase III)
932-16183 Amtrak (Phase IV)
Reg. Price: \$59.98 Sale: **\$41.98**
Phase IVb Also on Sale!
932-16184 Amtrak (Phase IVb)
Reg. Price: \$59.98 Sale: **\$45.98**



HO Superliner I Lounge w/Plated Finish
Walthers Rolling Stock
932-16191 Amtrak (Phase II)
932-16192 Amtrak (Phase III)
932-16193 Amtrak (Phase IV)
Reg. Price: \$59.98 Sale: **\$41.98**
Phase IVb Also on Sale!
932-16194 Amtrak (Phase IVb)
Reg. Price: \$59.98 Sale: **\$45.98**

HO SCALE | FREIGHT CARS



Limited Quantity Available
HO Wide Vision Caboose
Walthers Trainline®
931-506 CR
931-518 WC
931-526 Alaska Railroad (blue, yellow)
Reg. Price: \$10.98 Sale: **\$7.98**



Limited Quantity Available
HO 50' Plug-Door Boxcar
Walthers Trainline
931-674 MKT "Katy"
Reg. Price: \$11.98 Sale: **\$8.98**

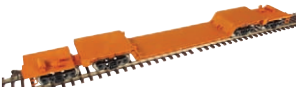


HO Mark III Flexi-Van Flatcar w/Two Trailers
Walthers Gold Line™
932-3921 NYC #504228
932-3922 MILW #7025
932-3923 IC #903
932-3925 NYC #504100
932-3926 MILW #7028
932-3927 SAL #1
932-3920 Undecorated
Reg. Price: \$49.98 Sale: **\$22.98**

*Union Pacific licensed product



HO Bethgon Coalporter Gondola 6-Pack
Walthers Gold Line
932-40418 BNSF Railway (Wedge Logo)
932-40419 CSX
Price: **\$109.98**
Super Savings!
932-40410 CN (Website)
932-40411 CR (Conrail Quality)
932-40413 NS #5 (Aluminum)
Reg. Price: \$109.98 Sale: **\$84.98**



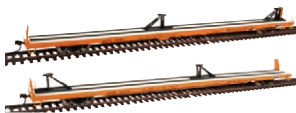
HO 81' 4-Truck Depressed Center Flatcar
Walthers Gold Line
932-5630 ATSF
Reg. Price: \$34.98 Sale: **\$19.98**



HO 66' Heavy-Duty 4-Truck Flatcar
Walthers Gold Line
932-5645 UP
932-5648 SP
Reg. Price: \$31.98 Sale: **\$16.98**
Save on CSX Too!
932-5647 CSX
Reg. Price: \$31.98 Sale: **\$15.98**



NEW HO Trinity 2-Bay Cement Service Covered Hopper
Walthers Gold Line
932-41301 BNSF #408170 (Mineral Brown, Circle/Cross Logo)
932-41302 BNSF #408168 (Mineral Brown, Circle/Cross Logo)
932-41303 BNSF #408121 (Mineral Brown, Circle/Cross Logo)
932-41304 Chicago Freight Car Leasing CRDX #9824 (light gray)
932-41305 Chicago Freight Car Leasing CRDX #9845 (light gray)
932-41306 Chicago Freight Car Leasing CRDX #9836 (light gray)
932-41307 ITLX #30304 (light gray)
932-41308 ITLX #30371 (light gray)
932-41309 ITLX #30012 (light gray)
932-41310 WC #84662 (light gray, maroon lettering)
932-41312 Dakota, Minnesota & Eastern #29227 (light gray, blue Logo)
932-41313 Blue Circle Cement #138 (light gray, blue & yellow Logo)
Price: **\$21.98**



HO Bethlehem 89'4" Flush Deck Flatcar 2-Pack
Walthers Gold Line
932-240308 New Orleans Public Belt
Reg. Price: \$59.98 Sale: **\$27.98**



NEW HO Gunderson 50' High-Cube Paper-Service Boxcar
Walthers Gold Line
932-7122 WC #21551 (maroon)
932-7123 CN/GTW #406407 (GTW Reporting Marks, brown)
932-7127 Wheeling & Lake Erie #30063 (brown)
932-7130 NOKL #570586 (brown)
932-7131 NS #473337 (brown)
932-7135 International Bridge & Terminal #19166 (green)
Price: **\$24.98**



NEW HO 23,000-Gallon Funnel-Flow Tank Car
Walthers Gold Line
932-7279 ADM #25704 (Leaf Logo)
932-7282 UTLX #67601 (black w/Conspicuity Markings)
932-7285 Procor/Interstate Asphalt PRTX #135 (black)
932-7288 Procor/Chicago Board of Asphalt PRTX #102 (black)
932-7291 Procor CGTX #23527 (black w/Conspicuity Markings)
932-7294 Procor #75565 (black w/Conspicuity Markings)
Price: **\$27.98**