

Wainbee's Quick Picks: Hydraulic Valves

Hand Picked. Delivered Quick.



Quick Deliveries

CORE Products Delivered from Stock

Common Configurations Offered

Hand Picked by In-house Technical Experts



TABLE OF CONTENTS

Check Valves4

Shuttle Valves, Load Control Valves, Flow Control Valves5

Pressure Control Valves6-7

ColorFlow® Valves8-9

Directional Control & Sandwich Valves.....10-13

Manual Valves13

Solenoid Valves.....14-15

Proportional Valves16

Coils.....17

Cartpak Bodies.....18

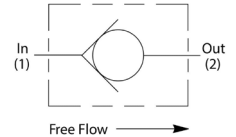
Line Bodies.....19

CHECK VALVES

Standard Checks, Pilot Operated Checks, Dual Pilot Operated Checks

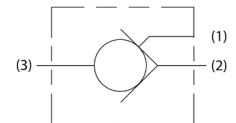
Standard Checks

SERIES	BODY	MAX. INLET PRESSURE	CRACKING PRESSURE	FLOW RATING	FEATURES
CVH081P	B08-2-6T	5000 PSI	5 PSI	10 GPM	Spherical Poppet
CVH103P	B10-2-8T	5000 PSI	5 PSI	16 GPM	Spherical Poppet
D04B2-0.2N	B10-2-8T	6000 PSI	3 PSI	42 GPM	Ball Check
CVH161P	B16-2-16T	5000 PSI	5 PSI	60 GPM	Fully Guided Poppet
CVH201P	B20-2-20T	5000 PSI	5 PSI	80 GPM	Fully Guided Poppet



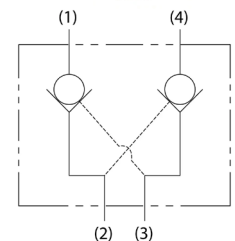
Pilot Operated Checks

SERIES	BODY	MAX. INLET PRESSURE	CRACKING PRESSURE	FLOW RATING	FEATURES
CP084P	B08-3-6T	3000 PSI	25 PSI	5 GPM	Compact Design
CPH104P	B10-3-8T	5000 PSI	20 PSI	8 GPM	Compact Design



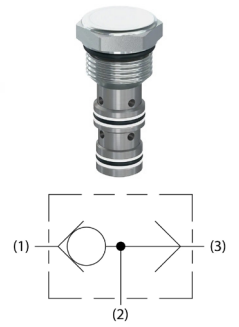
Dual Pilot Operated Checks

SERIES	BODY	MAX. INLET PRESSURE	CRACKING PRESSURE	FLOW RATING	FEATURES
CPD084P	B08-4-8T	3000 PSI	3:1	5 GPM	Compact Design
CDPH103A20-8T	-	5000 PSI	3	16 GPM	Spherical Poppet



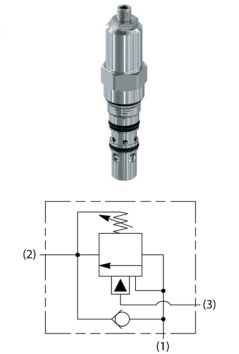
SHUTTLE VALVES

SERIES	BODY	MAX. INLET PRESSURE	FLOW RATING	FEATURES
ASH-06-2	-	3000 PSI	6 GPM	5 drops/min
CSH101B	B10-3-8T	5000 PSI	10 GPM	10 drops/min



LOAD CONTROL VALVES, COUNTERBALANCE VALVES

SERIES	BODY	MAX. INLET PRESSURE	FLOW RATING	PILOT RATIO	PRESSURE RANGE
CB101CS20	B10-3-8T	5000 PSI	12 GPM	7:1	1000-2500 PSI
CB101AS10	B10-3-8T	5000 PSI	12 GPM	3:1	500-1500 PSI
CB101AS10V	B10-3-8T	5000 PSI	12 GPM	3:1	500-1500 PSI
CB101AS20	B10-3-8T	5000 PSI	12 GPM	3:1	1000-2500 PSI
CB101AS20V	B10-3-8T	5000 PSI	12 GPM	3:1	1000-2500 PSI
CB101AS30	B10-3-8T	5000 PSI	12 GPM	3:1	2400-5000 PSI
E2B040ZNMK3	LB10253A (Single) LB10261A (Dual)	5000 PSI	15.9 GPM	3:1	725-5000 PSI



FLOW CONTROL VALVES

Needle Valves, Pressure Compensated Valves

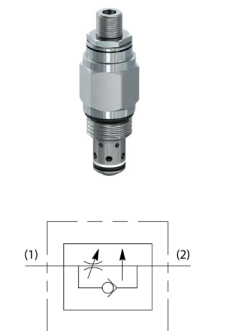
Needle Valves

SERIES	BODY	MAX. INLET PRESSURE	FLOW RATING	FEATURES
NVH081FS	B08-2-6T	5500 PSI	10 GPM	Fine Adjustment
NVH101K	B10-2-8T	5500 PSI	16 GPM	Course Adjustment
NVH101S	B10-2-8T	5500 PSI	16 GPM	Course Adjustment
FV101S	B10-2-8T	3000 PSI	12 GPM	Reverse Check
FV102S	B10-2-8T	3000 PSI	6 GPM	Reverse Check



Pressure Compensated Valves

SERIES	BODY	MAX. INLET PRESSURE	FLOW RATING
FA101S	B10-2-8T	3000 PSI	5.5 GPM
FC101S100	B10-2-8T	3000 PSI	0.75-2.2 GPM

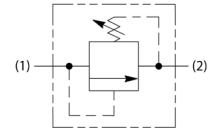


PRESSURE CONTROL VALVES

Direct Acting Relief, Differential Area Relief, Pilot Operated Relief, Unloading Valves, Sequence Valves, Pilot Operated Pressure Reducing, Pilot Operate Pressure Reducing/Relieving

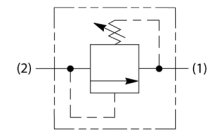
Direct Acting Relief

SERIES	BODY	MAX. INLET PRESSURE	FLOW RATING	PRESSURE RANGE
RD102S30	B10-2-8T	3600 PSI	10 GPM	600-3000 PSI
RDH082S50	B08-2-6T	5500 PSI	8 GPM	500-5000 PSI
RDH101S30	B10-2-8T	5500 PSI	0.5 GPM	200-3000 PSI



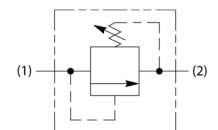
Differential Area Relief

SERIES	BODY	MAX. INLET PRESSURE	FLOW RATING	PRESSURE RANGE
RDH083S30V	B08-2-8T	5500 PSI	12 GPM	1000-3000 PSI
RDH103S30	B10-2-8T	5500 PSI	20 GPM	500-3000 PSI
RDH103S50	B10-2-8T	5500 PSI	20 GPM	500-5000 PSI



Pilot Operated Relief

SERIES	BODY	MAX. INLET PRESSURE	FLOW RATING	PRESSURE RANGE
RAH101S10	B10-2-8T	5000 PSI	30 GPM	100-1000 PSI
RAH101S30	B10-2-8T	5000 PSI	30 GPM	200-3000 PSI
RAH101S50	B10-2-8T	5000 PSI	30 GPM	200-5000 PSI
RAH121S30	B12-2-12T	5500 PSI	30 GPM	300-3000 PSI
RAH161S30	B16-2-16T	5500 PSI	80 GPM	300-3000 PSI
RAH161S50	B16-2-16T	5500 PSI	80 GPM	500-5000 PSI

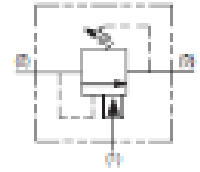


PRESSURE CONTROL VALVES

Direct Acting Relief, Differential Area Relief, Pilot Operated Relief, Unloading Valves, Sequence Valves, Pilot Operated Pressure Reducing, Pilot Operate Pressure Reducing/Relieving

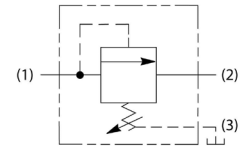
Unloading Valves

SERIES	BODY	MAX. INLET PRESSURE	FLOW RATING	PRESSURE RANGE
RU101S30C	B10-3-8T	3500 PSI	1 GPM	200-3000 PSI



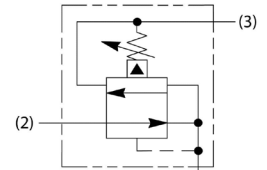
Sequence Valves

SERIES	BODY	MAX. INLET PRESSURE	FLOW RATING	PRESSURE RANGE
SVH101K10	B10-3-8T	5500 PSI	15 GPM	100-1000 PSI



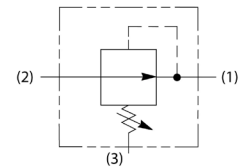
Pilot Operate Pressure Reducing/Relieving

SERIES	BODY	MAX. INLET PRESSURE	FLOW RATING	PRESSURE RANGE
PRH101K10	B10-3-8T	5500 PSI	15 GPM	200-1000 PSI
PRH101S10	B10-3-8T	5500 PSI	15 GPM	200-1000 PSI
PRH101S30	B10-3-8T	5500 PSI	15 GPM	600-3000 PSI
PRH161S10	B16-3-16T	5500 PSI	40 GPM	100-1000 PSI
PRH161S30	B16-3-16T	5500 PSI	40 GPM	300-1000 PSI



Pilot Operate Pressure Reducing

SERIES	BODY	MAX. INLET PRESSURE	FLOW RATING	PRESSURE RANGE
PRH122S50	B12-3-12T	5500 PSI	30 GPM	300-3000 PSI



ColorFlow® VALVES

C Series Check Valves, F Series Flow Control Valves, N Series Needle Valves, MV Series Needle Valves

C Series Check Valves

SERIES	PORT SIZE	MAX FLOW (GPM)	MATERIAL
C200S	1/8" NPT	3	Steel
C400S	1/4" NPT	5	
C600S	3/8" NPT	8	
C800S	1/2" NPT	15	
C1200S	3/4" NPT	25	
C1600S	1" NPT	40	
C2400S	1 1/2" NPT	100	
C200B	1/8" NPT	3	Brass
C400B	1/4" NPT	5	
C600B	3/8" NPT	8	
C800B	1/2" NPT	15	
C1200B	3/4" NPT	25	
C1600B	1" NPT	40	
C620S	#6 SAE	5	Steel
C820S	#8 SAE	8	
C1220S	#12 SAE	25	
C1620S	#16 SAE	40	
C2020S	#20 SAE	70	



F Series Flow Control Valves

SERIES	PORT SIZE	MAX FLOW (GPM)	MATERIAL
F200S	1/8" NPT	3	Steel
F400S	1/4" NPT	5	
F600S	3/8" NPT	8	
F800S	1/2" NPT	15	
F1200S	3/4" NPT	25	
F1600S	1" NPT	40	
F2000S	1 1/4" NPT	70	
F200B	1/8" NPT	3	Brass
F400B	1/4" NPT	5	
F600B	3/8" NPT	8	
F800B	1/2" NPT	15	
F1200B	3/4" NPT	25	
F620S	#6 SAE	5	Steel
F820S	#8 SAE	8	
F1020S	#10 SAE	15	
F1220S	#12 SAE	25	



ColorFlow® VALVES

C Series Check Valves, F Series Flow Control Valves, N Series Needle Valves, MV Series Needle Valves

N Series Needle Valves

SERIES	PORT SIZE	MAX FLOW (GPM)	MATERIAL
N200S	1/8" NPT	3	Steel
N400S	1/4" NPT	5	
N600S	3/8" NPT	8	
N800S	1/2" NPT	15	
N1200S	3/4" NPT	25	
N1600S	1" NPT	40	
N400B	1/4" NPT	5	Brass
N600B	3/8" NPT	8	
N800B	1/2" NPT	15	
N1200B	3/4" NPT	25	
N620S	#6 SAE	5	Steel
N820S	#8 SAE	8	



MV Series Needle Valves

SERIES	PORT SIZE	MAX FLOW (GPM)	MATERIAL
MV400S	1/8" NPT	5	Steel
MV600S	1/4" NPT	8	
MV800S	3/8" NPT	15	



DIRECTIONAL CONTROL & SANDWICH VALVES

NFPA D03 & D05, Valve Accessories, Manapak Sandwich Valves



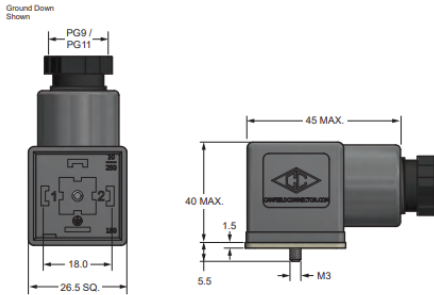
NFPA D03		
SERIES	VOLTAGE	CONNECTION
D1VW001CNKW4	12 VDC	DIN
D1VW001CNJW4	24 VDC	DIN
D1VW001CNYW4	120 VAC	DIN
D1VW001CNJG45	24 VDC	Conduit Box
D1VW002CNJW4	24 VDC	DIN
D1VW002CNYW4	120 VAC	DIN
D1VW004CNKW4	12 VDC	DIN
D1VW004CNJW4	24 VDC	DIN
D1VW004CNYW4	120 VAC	DIN
D1VW008CNJW4	24 VDC	DIN
D1VW008CNYW4	120 VAC	DIN
D1VW020BNJW4	24 VDC	DIN
D1VW020BNYW4	120 VAC	DIN
D1VW020DNJW4	24 VDC	DIN
D1VW020DNYW4	120 VAC	DIN

NFPA D05		
SERIES	VOLTAGE	CONNECTION
D3W001CNJW4	24 VDC	DIN
D3W001CNYW4	120 VAC	DIN
D3W004CNJW4	24 VDC	DIN
D3W004CNYW4	120 VAC	DIN
D3W020BNJW4	24 VDC	DIN
D3W020BNYW4	120 VAC	DIN

DIRECTIONAL CONTROL & SANDWICH VALVES

NFPA D03 & 005, Valve Accessories, Manapak Sandwich Valves

Valve Accessories: Solenoid Connectors

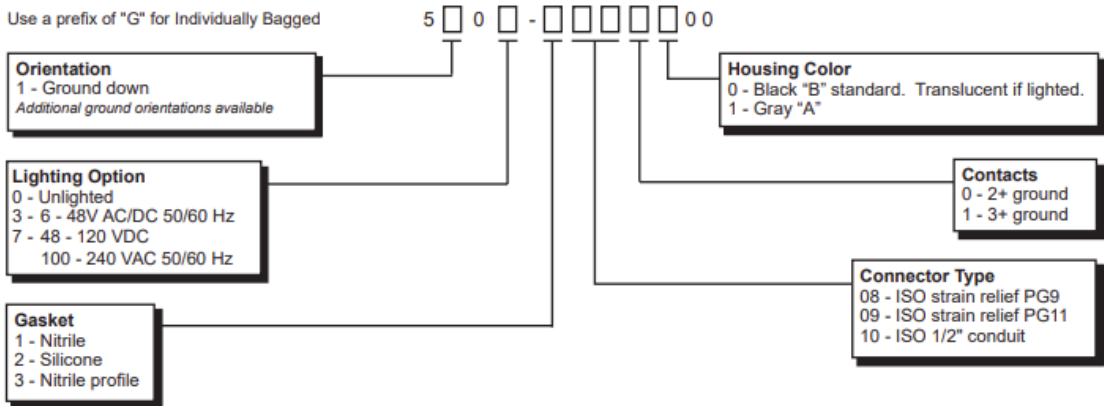


Part Numbers:

- CAN5100-1080000
- CAN5100-1090000
- CAN5103-1080000
- CAN5107-1080000

Each connector kit contains screw, washer and gasket assembly.

Use a prefix of "G" for individually Bagged



Valve Accessories: Mounting Bolt Kits for Directional Control Valves

Bolting Kits for use with D1VW Directional Control Valves

NUMBER OF SANDWICH VALVES @ 40.0 MM (1.57") THICKNESS	0	NUMBER OF SANDWICH VALVES @ 40 MM (1.58") THICKNESS			
		0	1	2	3
		BK209-W 1.25"	BK243-W 2.88"	BK225-W 4.38"	BK244-W 6.00"

Bolting Kits for use with D3W Directional Control Valves

D3W STANDARD	NUMBER OF SANDWICH VALVES @ 50 MM (2.00") THICKNESS		
	0	1	2
	BK98-W 1.62"	BK141-W 3.50"	BK142-W 5.50"

DIRECTIONAL CONTROL & SANDWICH VALVES

NFPA D03 & 005, Valve Accessories, Manapak Sandwich Valves

Manapak Sandwich Valves

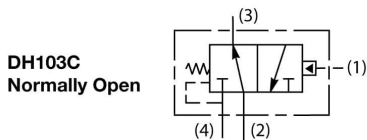
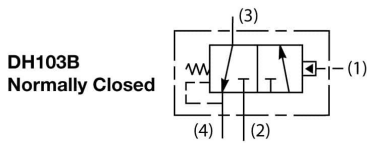
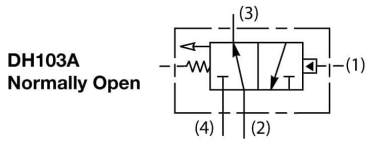


MANAPAK NO.	STYLE	SEALS	ADJUSTMENT	PORTS
CPOM2DDN		Nitrile	-	A&B
CPOM3DDV		Fluorocarbon	-	A&B
CPOM2AAN		Nitrile	-	A
FM2DDKN		Nitrile	Knob	A&B
FM2DDSN		Nitrile	Allen Hex	A&B
FM2DDDKN		Nitrile	Knob, Fine	A&B
FM2DDDKV		Fluorocarbon	Knob, Fine	A&B
FM3DDKN		Nitrile	Knob	A&B

DIRECTIONAL CONTROL VALVES



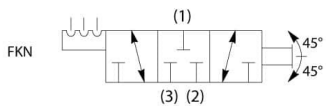
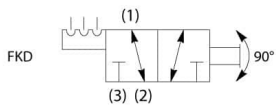
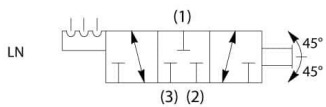
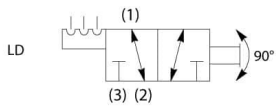
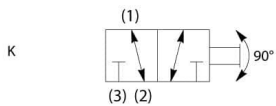
SERIES	BODY	MAX. INLET PRESSURE	FLOW RATING	CRACKING PRESSURE
DH103C16	B10-4-8T	3500 PSI	10 GPM	160 PSI



MANUAL VALVES



SERIES	BODY	MAX. INLET PRESSURE	FLOW RATING	FEATURES
DM103LD	B10-3-8T	3500 PSI	6 GPM	LEVER/DETENT



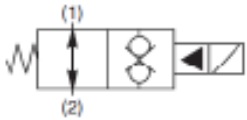
SOLENOID VALVES

2 Way Poppet Valves, 2 Way Spool Valves, 3 Way Spool Valves

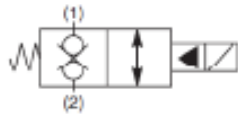


2 Way Poppet Valves

SERIES	BODY	COIL TYPE	MAX. INLET PRESSURE	FLOW RATING	FEATURES
DSH081CR	B08-2-6T	CSS	5000 PSI	8 GPM	Normally Closed, Single Poppet
DSH081NR	B08-2-6T	CSS	5000 PSI	8 GPM	Normally Open, Free Reverse Flow
DSH101CR	B10-2-8T	CAS	5000 PSI	15 GPM	Normally Closed, Single Poppet
DSH101NR	B10-2-8T	CAS	5000 PSI	15 GPM	Normally Open, Free Reverse Flow
DSH121CR	B12-2-12T	CAS	5000 PSI	24 GPM	Normally Closed, Single Poppet
DSH121NR	B12-2-12T	CAS	5000 PSI	24 GPM	Normally Open, Free Reverse Flow
DSH161CR	B16-2-16T	CAS	5000 PSI	40 GPM	Normally Closed, Single Poppet
DSH161NR	B16-2-16T	CAS	5000 PSI	40 GPM	Normally Open, Free Reverse Flow
DSH081CRT	B08-2-6T	CSS	5000 PSI	8 GPM	Normally Closed, Single Poppet, Push & Twist Override
DSH081CRV	B08-2-6T	CSS	5000 PSI	8 GPM	Normally Open, Free Reverse Flow, Fluorocarbon Seals
DSH101CRV	B10-2-8T	CAS	5000 PSI	15 GPM	Normally Closed, Single Poppet, Fluorocarbon Seals
DSH101NRT	B10-2-8T	CAS	5000 PSI	15 GPM	Normally Open, Free Reverse Flow, Push & Twist Override



NORMALLY OPEN

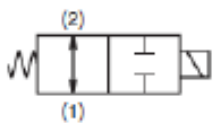


NORMALLY CLOSED

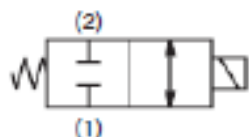
SERIES	BODY	COIL TYPE	MAX. INLET PRESSURE	FLOW RATING	FEATURES
GS068100N	B16-2-16T	SP	5000 PSI	75 GPM	Normally Closed, Bi Directional Poppet
GS068600N	B16-2-16T	SP	5000 PSI	75 GPM	Normally Open, Bi Directional Poppet

2 Way Spool Valves

SERIES	BODY	COIL TYPE	MAX. INLET PRESSURE	FLOW RATING	FEATURES
DSH102C	B10-2-8T	CAS	5000 PSI	8 GPM	Normally Closed
DSH102N	B10-2-8T	CAS	5000 PSI	5 GPM	Normally Open
DS162C	B16-2-16T	DS	3000 PSI	20 GPM	Normally Closed
DS162N	B16-2-16T	DS	3000 PSI	20 GPM	Normally Open



NORMALLY OPEN



NORMALLY CLOSED

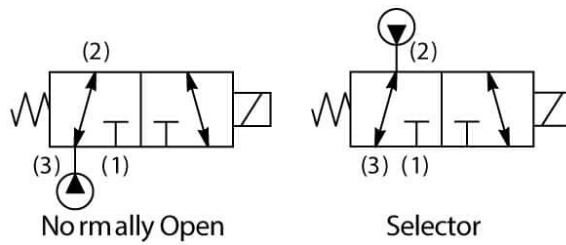
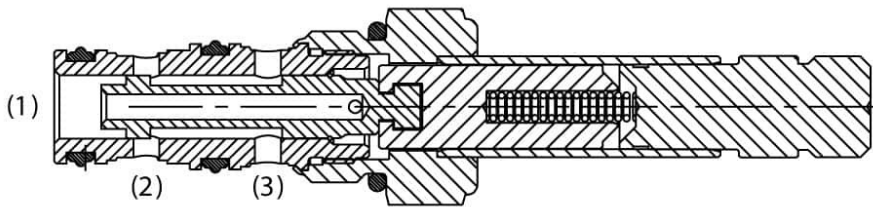
SOLENOID VALVES

2 Way Poppet Valves, 2 Way Spool Valves, 3 Way Spool Valves



3 Way Spool Valves

SERIES	BODY	COIL TYPE	MAX. INLET PRESSURE	FLOW RATING	FEATURES
DSH083N	B08-3-6T	CCS	5000 PSI	4 GPM	N.O or Selector

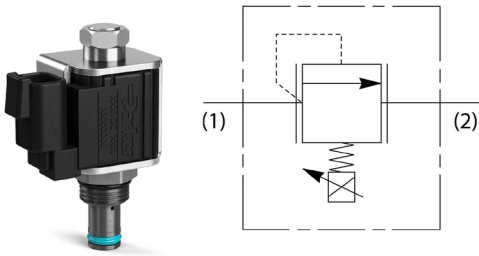


PROPORTIONAL VALVES

Pressure Relieving Valves, Flow Control Valves

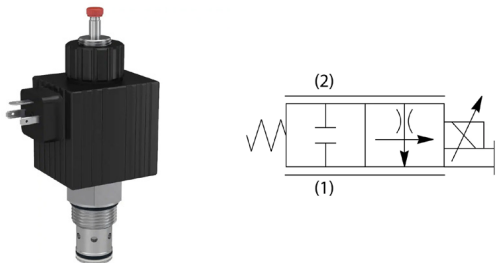
Pressure Relieving Valves

SERIES	BODY	COIL TYPE	MAX. INLET PRESSURE	FLOW RATING	FEATURES
AP02B2YR35ANL	B08-2-6T	CAS	5000 PSI	.35 GPM	Decrease Pressure/Increase Current



Proportional Flow Control Valves

SERIES	BODY	COIL TYPE	MAX. INLET PRESSURE	FLOW RATING	FEATURES
DF122C14N	B12-2-12T	DS COIL	3000 PSI	14 GPM	Manual Over Ride Included, Two Way Normally Closed



COILS

CA Series, CC Series, DS Series



CA Series

SERIES	COIL TYPE	VOLTAGE	CONNECTION
CAP012D	High Wattage	12 VDC	DIN
CAP012H	High Wattage	12 VDC	Deutsch
CAP024D	High Wattage	24 VDC	DIN
CAP115D	High Wattage	115 VAC	DIN
CAS012D	Standard	12 VDC	DIN
CAS012H	Standard	12 VDC	Deutsch
CAS012L	Standard	12 VDC	Double lead
CAS024D	Standard	24 VDC	DIN
CAS115D	Standard	115 VAC	DIN

CC Series

SERIES	COIL TYPE	VOLTAGE	CONNECTION
CCP012D	High Wattage	12 VDC	DIN
CCP012H	High Wattage	12 VDC	Deutsch
CCP024D	High Wattage	24 VDC	DIN
CCP024H	High Wattage	24 VDC	Deutsch
CCP115C	High Wattage	115 VAC	Conduit 1/2" NPTF
CCP115D	High Wattage	115 VAC	DIN
CCS012D	Standard	12 VDC	DIN
CCS012L	Standard	12 VDC	Double lead
CCS024D	Standard	24 VDC	DIN
CCS024H	Standard	24 VDC	Deutsch
CCS024L	Standard	24 VDC	Double lead
CCS115D	Standard	115 VAC	DIN

DS Series

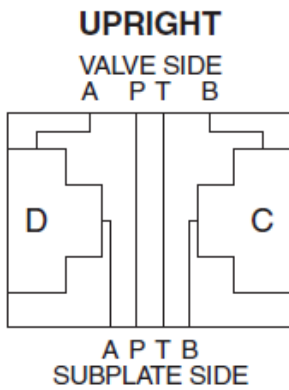
SERIES	COIL TYPE	VOLTAGE	CONNECTION
851058-012VDC	Standard	12 VDC	DIN
851058-024VDC	Standard	24 VDC	DIN
851058-120VAC	Standard	120 VDC	DIN

CARTPAK BODIES

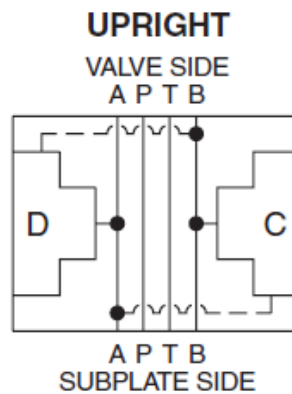


SERIES	TYPE/CONFIGURATION	BODY MATERIAL	SEAL MATERIAL
BD03-ABN-A	A and B Port Interrupt	Aluminum	Nitrile
BD03-ABX-A	A and B Crossover	Aluminum	Nitrile
BD03-PNR-A	P Port Interrupt Reducing	Aluminum	Nitrile
BD03-PT-A	P to T	Aluminum	Nitrile

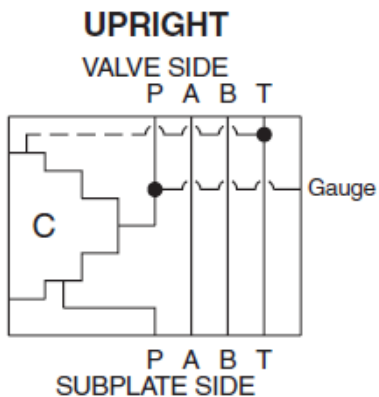
BD03-ABN-A



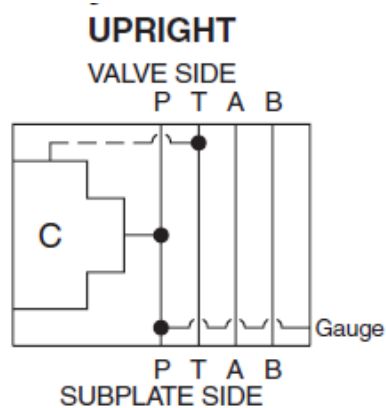
BD03-ABX-A



BD03-PNR-A



BD03-PT-A



LINE BODIES

Sizes: 08, 10, 12, 16, 20



SERIES	CAVITY SIZE	MATERIAL	CONNECTION
B08-2-6T	C08-2	Steel	5000 PSI
B08-2-A6T	C08-2	Aluminum	3000 PSI
B08-3-6T	C08-3	Steel	5000 PSI
B08-3-A6T	C08-3	Aluminum	3000 PSI
B08-4-6T	C08-4	Steel	5000 PSI
B08-4-A6T	C08-4	Aluminum	3000 PSI
B10-2-8T	C10-2	Steel	5000 PSI
B10-2-A8T	C10-2	Aluminum	3000 PSI
B10-3-8T	C10-3	Steel	5000 PSI
B10-3-A8T	C10-3	Aluminum	3000 PSI
B10-3L-8T	C10-3L	Steel	5000 PSI
B12-2-12T	C12-2	Steel	5000 PSI
B12-2-A12T	C12-2	Aluminum	3000 PSI
B16-2-16T	C16-2	Steel	5000 PSI
B16-2-A16T	C16-2	Aluminum	3000 PSI
B20-2-20T	C20-2	Steel	5000 PSI
B20-2-A20T	C20-2	Aluminum	3000 PSI