



**Section A - Sprinklers**  
**Standard Coverage, Standard Response**

**TABLE OF CONTENTS**

Pendent/Upright (glass bulb)	{	VK100/VK102, 5.6 (81) K factor, upright / pendent ..... A-1 VK1001/VK1021, XT1, 5.6 (81) K factor, upright / pendent.....A-2 VK200/VK202, 8.0 (115) K factor, (3/4" NPT), upright / pendent ..... A-3 VK2001/VK2021, XT1, 8.0 (115) K factor, (3/4" NPT), upright / pendent.....A-4 VK200/VK202, 8.0 (115) K factor, (1/2" NPT), upright / pendent (REPLACEMENT).....A-5 VK2002/VK2022, XT1, 8.0 (115) K factor, (1/2" NPT), upright / pendent (REPLACEMENT).....A-6
Conventional	—	VK118/VK120, 5.6 (81) / 8.0 (115) K factor ..... A-7 VK1181/VK1201, XT1, 5.6 (81) / 8.0 (115) K factor..... A-8
Sidewall	—	VK104/VK106, 5.6 (81) K factor, horizontal sidewall / vertical sidewall ..... A-9
Concealed	{	VK4921 5.6 (81) K factor, flat concealed pendent .....A-10
Fusible Link	—	Fusible link, upright and pendent (standard response) .....A-11 – A-12
High Pressure Ultra High Temp Stainless Steel	{	VK124/VK122, high pressure, 5.6 (81) K factor, upright / pendent .....A-13 VK1001/VK1021, XT1, high pressure, 5.6 (81) K factor, upright / pendent.....A-14 VK100/VK102, ultra high temperature, 5.6 (81) K factor, upright / pendent .....A-15 VK200/VK202, ultra high temperature, 8.0 (115) K factor, upright / pendent.....A-15 VK130/VK132, stainless steel, 5.6 (81) K factor, upright / pendent.....A-16 VK368, stainless steel, 8.0 (115) K factor, pendent .....A-16 VK598, 25.2 (360) K-factor, standard response, upright .....A-16

**Notes**

1. Unless otherwise indicated, all cover plates and escutcheons are sold separately.
2. Cover plates, escutcheons, and frame-style sprinklers are available in custom colors at an additional charge. See pages F-8 for details.
3. Refer to Viking technical data pages for complete product specifications. You may print or download technical data by visiting [www.vikinggroupinc.com](http://www.vikinggroupinc.com).
4. List prices effective July 9, 2022. Supersedes February 2022 list price book.
5. All sales by Viking are subject to the Terms & Conditions found on the last page of this book.

*Micromatic® is a registered trademark of The Viking Corporation.*  
*Horizon® is a registered trademark of The Viking Corporation.*  
*Mirage® is a registered trademark of The Viking Corporation.*



**Micromatic<sup>™</sup> Model M**  
**Standard Response**  
**Standard Coverage**  
**Glass Bulb**  
**Upright**

SIN: VK100  
 K Factor: 5.6 (81)  
 Thread Size: 1/2 inch NPT  
 Base Part #: 12986



**Micromatic<sup>™</sup> Model M**  
**Standard Response**  
**Standard Coverage**  
**Glass Bulb**  
**Pendent**

SIN: VK102  
 K Factor: 5.6 (81)  
 Thread Size: 1/2 inch NPT  
 Base Part #: 12987

Finish	Temp	Part #	IPG	List Price
Standard Brass	155°F	12986AB	V101.1	\$32.04
Standard Brass	175°F	12986AD	V101.1	\$32.04
Standard Brass	200°F	12986AE	V101.1	\$32.04
Standard Brass	212°F	12986AM	V101.1	\$32.04
Standard Brass	286°F	12986AG	V101.1	\$32.04
Standard Brass	360°F	12986AH	V108	\$32.34
Chrome	155°F	12986FB	V101.1	\$51.40
Chrome	175°F	12986FD	V101.1	\$51.40
Chrome	200°F	12986FE	V101.1	\$51.40
Chrome	212°F	12986FM	V101.1	\$51.40
Chrome	286°F	12986FG	V101.1	\$51.40
Chrome	360°F	12986FH	V108	\$51.88
White-Polyester <sup>1</sup>	155°F	12986MB/W	V101.1	\$51.40
White-Polyester	175°F	12986MD/W	V101.1	\$51.40
White-Polyester	200°F	12986ME/W	V101.1	\$51.40
White-Polyester	212°F	12986MM/W	V101.1	\$51.40
White-Polyester	286°F	12986MG/W	V101.1	\$51.40
White-Polyester	360°F	12986MH/W	V108	\$51.88
Black-Polyester <sup>1</sup>	155°F	12986MB/B	V101.1	\$80.11
Black-Polyester	175°F	12986MD/B	V101.1	\$80.11
Black-Polyester	200°F	12986ME/B	V101.1	\$80.11
Black-Polyester	212°F	12986MM/B	V101.1	\$80.11
Black-Polyester	286°F	12986MG/B	V101.1	\$80.11
Black-Polyester	360°F	12986MH/B	V108	\$80.86
Wax Coated <sup>2</sup>	155°F	12986CB	V102	\$63.01
Wax Coated	175°F	12986CD	V102	\$63.01
Wax Coated	200°F	12986CE	V102	\$63.01
Wax Coated	212°F	12986CM	V102	\$63.01
Wax Coated	286°F	12986CG	V102	\$63.01
Polyester & Wax	155°F	12986VB/W	V102	\$71.77
Polyester & Wax	175°F	12986VD/W	V102	\$71.77
Polyester & Wax	200°F	12986VE/W	V102	\$71.77
Polyester & Wax	212°F	12986VM/W	V102	\$71.77
Polyester & Wax	286°F	12986VG/W	V102	\$71.77
Nickel PTFE (ENT) <sup>3</sup>	155°F	12986JNB	V188.A	\$92.24
Nickel PTFE (ENT)	175°F	12986JND	V188.A	\$92.24
Nickel PTFE (ENT)	200°F	12986JNE	V188.A	\$92.24
Nickel PTFE (ENT)	286°F	12986JNG	V188.A	\$92.24

**Installation Wrenches**

Wrench - Std Upright / Pdt	21475M/B	V207	\$103.93
Wrench - Wax Coated Spk	13577W/B	V207	\$200.28
Wrench - Recessed Pndnt	13655W/B	V207	\$200.28

Finish	Temp	Part #	IPG	List Price
Standard Brass	155°F	12987AB	V101.1	\$39.39
Standard Brass	175°F	12987AD	V101.1	\$39.39
Standard Brass	200°F	12987AE	V101.1	\$39.39
Standard Brass	212°F	12987AM	V101.1	\$39.39
Standard Brass	286°F	12987AG	V101.1	\$39.39
Standard Brass	360°F	12987AH	V108	\$39.75
Chrome	155°F	12987FB	V101.1	\$43.39
Chrome	175°F	12987FD	V101.1	\$43.39
Chrome	200°F	12987FE	V101.1	\$43.39
Chrome	212°F	12987FM	V101.1	\$43.39
Chrome	286°F	12987FG	V101.1	\$43.39
Chrome	360°F	12987FH	V108	\$43.80
White-Polyester <sup>1</sup>	155°F	12987MB/W	V101.1	\$43.39
White-Polyester	175°F	12987MD/W	V101.1	\$43.39
White-Polyester	200°F	12987ME/W	V101.1	\$43.39
White-Polyester	212°F	12987MM/W	V101.1	\$43.39
White-Polyester	286°F	12987MG/W	V101.1	\$43.39
White-Polyester	360°F	12987MH/W	V108	\$43.80
Black-Polyester <sup>1</sup>	155°F	12987MB/B	V101.1	\$80.11
Black-Polyester	175°F	12987MD/B	V101.1	\$80.11
Black-Polyester	200°F	12987ME/B	V101.1	\$80.11
Black-Polyester	212°F	12987MM/B	V101.1	\$80.11
Black-Polyester	286°F	12987MG/B	V101.1	\$80.11
Black-Polyester	360°F	12987MH/B	V108	\$80.86
Wax Coated <sup>2</sup>	155°F	12987CB	V102	\$63.01
Wax Coated	175°F	12987CD	V102	\$63.01
Wax Coated	200°F	12987CE	V102	\$63.01
Wax Coated	212°F	12987CM	V102	\$63.01
Wax Coated	286°F	12987CG	V102	\$63.01
Polyester & Wax	155°F	12987VB/W	V102	\$71.77
Polyester & Wax	175°F	12987VD/W	V102	\$71.77
Polyester & Wax	200°F	12987VE/W	V102	\$71.77
Polyester & Wax	286°F	12987VG/W	V102	\$71.77
Nickel PTFE (ENT) <sup>3</sup>	155°F	12987JNB	V188.A	\$92.24
Nickel PTFE (ENT)	175°F	12987JND	V188.A	\$92.24
Nickel PTFE (ENT)	200°F	12987JNE	V188.A	\$92.24
Nickel PTFE (ENT)	286°F	12987JNG	V188.A	\$92.24

**Select Escutcheons - Recessed Pendent Sprinklers\***

E1 push-on (chrome, 1/2 in)	06419AF	V200	\$10.77
E1 push-on (white, 1/2 in)	06419AM/W	V200	\$10.77
E2 threaded (chrome, 1/2 in)	11038F	V200	\$10.81

(1) Suitable for decorative applications; UL listed for corrosion resistance.

(2) Standard finish for wax coated sprinklers is brass.

(3) Electroless Nickel PTFE (ENT) plating is UL Listed and FM Approved for corrosion resistance.



**XT1**  
**Standard Response**  
**Standard Coverage**  
**Glass Bulb**  
**Upright**

SIN: VK1001  
 K Factor: 5.6 (81)  
 Thread Size: 1/2 inch NPT  
 Base Part #: 23867



**XT1**  
**Standard Response**  
**Standard Coverage**  
**Glass Bulb**  
**Pendent**

SIN: VK1021  
 K Factor: 5.6 (81)  
 Thread Size: 1/2 inch NPT  
 Base Part #: 23868

Finish	Temp	Part #	IPG	List Price
Standard Brass	135°F	23867AA	V101	\$31.43
Standard Brass	155°F	23867AB	V101	\$31.43
Standard Brass	175°F	23867AD	V101	\$31.43
Standard Brass	200°F	23867AE	V101	\$31.43
Standard Brass	286°F	23867AG	V101	\$31.43
Chrome	135°F	23867FA	V101	\$50.42
Chrome	155°F	23867FB	V101	\$50.42
Chrome	175°F	23867FD	V101	\$50.42
Chrome	200°F	23867FE	V101	\$50.42
Chrome	286°F	23867FG	V101	\$50.42
White-Polyester <sup>1</sup>	135°F	23867MA/W	V101	\$50.42
White-Polyester <sup>1</sup>	155°F	23867MB/W	V101	\$50.42
White-Polyester	175°F	23867MD/W	V101	\$50.42
White-Polyester	200°F	23867ME/W	V101	\$50.42
White-Polyester	286°F	23867MG/W	V101	\$50.42
Black-Polyester <sup>1</sup>	135°F	23867MA/B	V101	\$78.58
Black-Polyester <sup>1</sup>	155°F	23867MB/B	V101	\$78.58
Black-Polyester	175°F	23867MD/B	V101	\$78.58
Black-Polyester	200°F	23867ME/B	V101	\$78.58
Black-Polyester	286°F	23867MG/B	V101	\$78.58
Nickel PTFE (ENT) <sup>2</sup>	135°F	23867JNA	V188.A	\$92.24
Nickel PTFE (ENT) <sup>2</sup>	155°F	23867JNB	V188.A	\$92.24
Nickel PTFE (ENT)	175°F	23867JND	V188.A	\$92.24
Nickel PTFE (ENT)	200°F	23867JNE	V188.A	\$92.24
Nickel PTFE (ENT)	286°F	23867JNG	V188.A	\$92.24

Finish	Temp	Part #	IPG	List Price
Standard Brass	135°F	23868AA	V101	\$38.64
Standard Brass	155°F	23868AB	V101	\$38.64
Standard Brass	175°F	23868AD	V101	\$38.64
Standard Brass	200°F	23868AE	V101	\$38.64
Standard Brass	286°F	23868AG	V101	\$38.64
Chrome	135°F	23868FA	V101	\$42.57
Chrome	155°F	23868FB	V101	\$42.57
Chrome	175°F	23868FD	V101	\$42.57
Chrome	200°F	23868FE	V101	\$42.57
Chrome	286°F	23868FG	V101	\$42.57
White-Polyester <sup>1</sup>	135°F	23868MA/W	V101	\$42.57
White-Polyester <sup>1</sup>	155°F	23868MB/W	V101	\$42.57
White-Polyester	175°F	23868MD/W	V101	\$42.57
White-Polyester	200°F	23868ME/W	V101	\$42.57
White-Polyester	286°F	23868MG/W	V101	\$42.57
Black-Polyester <sup>1</sup>	135°F	23868MA/B	V101	\$78.58
Black-Polyester <sup>1</sup>	155°F	23868MB/B	V101	\$78.58
Black-Polyester	175°F	23868MD/B	V101	\$78.58
Black-Polyester	200°F	23868ME/B	V101	\$78.58
Black-Polyester	286°F	23868MG/B	V101	\$78.58
Nickel PTFE (ENT) <sup>2</sup>	135°F	23868JNA	V188.A	\$92.24
Nickel PTFE (ENT) <sup>2</sup>	155°F	23868JNB	V188.A	\$92.24
Nickel PTFE (ENT)	175°F	23868JND	V188.A	\$92.24
Nickel PTFE (ENT)	200°F	23868JNE	V188.A	\$92.24
Nickel PTFE (ENT)	286°F	23868JNG	V188.A	\$92.24

Installation Wrenches			
Wrench - Standard	23559MB	V207	\$103.93
Wrench - Recessed	23560MB	V207	\$200.28

Select Escutcheons - Recessed Pendent Sprinklers*			
NP-1 push-on (chrome, ½ in)	22066F	V200	\$10.77
NP-1 push-on (white, ½ in)	22066M/W	V200	\$10.77
NP-2 threaded (chrome, ½ in)	22067F	V200	\$10.81

\*Refer to Page H-1 for complete list of available escutcheons

(1) Suitable for decorative applications; UL listed for corrosion resistance.

(2) Electroless Nickel PTFE (ENT) plating is UL Listed and FM Approved for corrosion resistance.



**Micromatic® Model M**  
**Standard Response**  
**Standard Coverage**  
**Glass Bulb**  
**Upright**

<b>SIN:</b>	VK200
<b>K Factor:</b>	8.0 (115)
<b>Thread Size:</b>	3/4 inch NPT
<b>Base Part #:</b>	18263



**Micromatic® Model M**  
**Standard Response**  
**Standard Coverage**  
**Glass Bulb**  
**Pendant**

<b>SIN:</b>	VK202
<b>K Factor:</b>	8.0 (115)
<b>Thread Size:</b>	3/4 inch NPT
<b>Base Part #:</b>	18264

Finish	Temp	Part #	IPG	List Price
Standard Brass	155°F	18263AB	V114.1	\$37.56
Standard Brass	175°F	18263AD	V114.1	\$37.56
Standard Brass	200°F	18263AE	V114.1	\$37.56
Standard Brass	286°F	18263AG	V114.1	\$37.56
Standard Brass	360°F	18263AH	V118	\$36.15
Chrome	155°F	18263FB	V114.1	\$43.00
Chrome	175°F	18263FD	V114.1	\$43.00
Chrome	200°F	18263FE	V114.1	\$43.00
Chrome	286°F	18263FG	V114.1	\$43.00
Chrome	360°F	18263FH	V118	\$41.39
White-Polyester <sup>1</sup>	155°F	18263MB/W	V114.1	\$43.00
White-Polyester	175°F	18263MD/W	V114.1	\$43.00
White-Polyester	200°F	18263ME/W	V114.1	\$43.00
White-Polyester	286°F	18263MG/W	V114.1	\$43.00
White-Polyester	360°F	18263MH/W	V114.1	\$43.00
Black-Polyester <sup>1</sup>	155°F	18263MB/B	V114.1	\$75.08
Black-Polyester	175°F	18263MD/B	V114.1	\$75.08
Black-Polyester	200°F	18263ME/B	V114.1	\$75.08
Black-Polyester	286°F	18263MG/B	V114.1	\$75.08
Black-Polyester	360°F	18263MH/B	V118	\$72.27
Polyester & Wax	155°F	18263VB/W	V115	\$81.58
Nickel PTFE (ENT) <sup>2</sup>	155°F	18263JNB	V188.A	\$120.11
Nickel PTFE (ENT)	175°F	18263JND	V188.A	\$120.11
Nickel PTFE (ENT)	200°F	18263JNE	V188.A	\$120.11
Nickel PTFE (ENT)	286°F	18263JNG	V188.A	\$120.11

Finish	Temp	Part #	IPG	List Price
Standard Brass	155°F	18264AB	V114.1	\$41.15
Standard Brass	175°F	18264AD	V114.1	\$41.15
Standard Brass	200°F	18264AE	V114.1	\$41.15
Standard Brass	286°F	18264AG	V114.1	\$41.15
Standard Brass	360°F	18264AH	V118	\$39.61
Chrome	155°F	18264FB	V114.1	\$49.61
Chrome	175°F	18264FD	V114.1	\$49.61
Chrome	200°F	18264FE	V114.1	\$49.61
Chrome	286°F	18264FG	V114.1	\$49.61
Chrome	360°F	18264FH	V118	\$47.75
White-Polyester <sup>1</sup>	155°F	18264MB/W	V114.1	\$49.61
White-Polyester	175°F	18264MD/W	V114.1	\$49.61
White-Polyester	200°F	18264ME/W	V114.1	\$49.61
White-Polyester	286°F	18264MG/W	V114.1	\$49.61
White-Polyester	360°F	18264MH/W	V114.1	\$49.61
Black-Polyester <sup>1</sup>	155°F	18264MB/B	V114.1	\$91.56
Black-Polyester	175°F	18264MD/B	V114.1	\$91.56
Black-Polyester	200°F	18264ME/B	V114.1	\$91.56
Black-Polyester	286°F	18264MG/B	V114.1	\$91.56
Black-Polyester	360°F	18264MH/B	V114.1	\$91.56
Polyester & Wax	155°F	18264VB/W	V115	\$81.58
Nickel PTFE (ENT) <sup>2</sup>	155°F	18264JNB	V188.A	\$120.11
Nickel PTFE (ENT)	175°F	18264JND	V188.A	\$120.11
Nickel PTFE (ENT)	200°F	18264JNE	V188.A	\$120.11
Nickel PTFE (ENT)	286°F	18264JNG	V188.A	\$120.11

Installation Wrenches			
Wrench - Std Upright / Pdt	21475M/B	V207	\$103.93
Wrench - Wax Coated Spk	13577W/B	V207	\$200.28
Wrench - Recessed Pndnt	13655W/B	V207	\$200.28

Select Escutcheons - Recessed Pendant Sprinklers*			
E1 push-on (chrome, 3/4 in)	20369F	V200	\$10.81
E1 push-on (white, 3/4 in)	20369M/W	V200	\$10.81
E2 threaded (chrome, 3/4 in)	20130F	V200	\$10.81

\*Refer to Page H-1 for complete list of available escutcheons

(1) Suitable for decorative applications; UL listed for corrosion resistance.  
 (2) Electroless Nickel PTFE (ENT) plating is UL Listed and FM Approved for corrosion resistance.



**XT1**  
**Standard Response**  
**Standard Coverage**  
**Glass Bulb**  
**Upright**

<b>SIN:</b>	VK2001
<b>K Factor:</b>	8.0 (115)
<b>Thread Size:</b>	3/4 inch NPT
<b>Base Part #:</b>	23875



**XT1**  
**Standard Response**  
**Standard Coverage**  
**Glass Bulb**  
**Pendent**

<b>SIN:</b>	VK2021
<b>K Factor:</b>	8.0 (115)
<b>Thread Size:</b>	3/4 inch NPT
<b>Base Part #:</b>	23876

Finish	Temp	Part #	IPG	List Price
Standard Brass	135°F	23875AA	V114	\$36.84
Standard Brass	155°F	23875AB	V114	\$36.84
Standard Brass	175°F	23875AD	V114	\$36.84
Standard Brass	200°F	23875AE	V114	\$36.84
Standard Brass	286°F	23875AG	V114	\$36.84
Chrome	135°F	23875FA	V114	\$42.18
Chrome	155°F	23875FB	V114	\$42.18
Chrome	175°F	23875FD	V114	\$42.18
Chrome	200°F	23875FE	V114	\$42.18
Chrome	286°F	23875FG	V114	\$42.18
White-Polyester <sup>1</sup>	135°F	23875MA/W	V114	\$42.18
White-Polyester	155°F	23875MB/W	V114	\$42.18
White-Polyester	175°F	23875MD/W	V114	\$42.18
White-Polyester	200°F	23875ME/W	V114	\$42.18
White-Polyester	286°F	23875MG/W	V114	\$42.18
Black-Polyester <sup>1</sup>	135°F	23875MA/B	V114	\$73.65
Black-Polyester	155°F	23875MB/B	V114	\$73.65
Black-Polyester	175°F	23875MD/B	V114	\$73.65
Black-Polyester	200°F	23875ME/B	V114	\$73.65
Black-Polyester	286°F	23875MG/B	V114	\$73.65
Nickel PTFE (ENT) <sup>2</sup>	135°F	23875JNA	V188.A	\$120.11
Nickel PTFE (ENT)	155°F	23875JNB	V188.A	\$120.11
Nickel PTFE (ENT)	175°F	23875JND	V188.A	\$120.11
Nickel PTFE (ENT)	200°F	23875JNE	V188.A	\$120.11
Nickel PTFE (ENT)	286°F	23875JNG	V188.A	\$120.11

Finish	Temp	Part #	IPG	List Price
Standard Brass	135°F	23876AA	V114	\$40.36
Standard Brass	155°F	23876AB	V114	\$40.36
Standard Brass	175°F	23876AD	V114	\$40.36
Standard Brass	200°F	23876AE	V114	\$40.36
Standard Brass	286°F	23876AG	V114	\$40.36
Chrome	135°F	23876FA	V114	\$48.66
Chrome	155°F	23876FB	V114	\$48.66
Chrome	175°F	23876FD	V114	\$48.66
Chrome	200°F	23876FE	V114	\$48.66
Chrome	286°F	23876FG	V114	\$48.66
White-Polyester <sup>1</sup>	135°F	23876MA/W	V114	\$48.66
White-Polyester	155°F	23876MB/W	V114	\$48.66
White-Polyester	175°F	23876MD/W	V114	\$48.66
White-Polyester	200°F	23876ME/W	V114	\$48.66
White-Polyester	286°F	23876MG/W	V114	\$48.66
Black-Polyester <sup>1</sup>	135°F	23876MA/B	V114	\$89.81
Black-Polyester	155°F	23876MB/B	V114	\$89.81
Black-Polyester	175°F	23876MD/B	V114	\$89.81
Black-Polyester	200°F	23876ME/B	V114	\$89.81
Black-Polyester	286°F	23876MG/B	V114	\$89.81
Nickel PTFE (ENT) <sup>2</sup>	135°F	23876JNA	V188.A	\$120.11
Nickel PTFE (ENT)	155°F	23876JNB	V188.A	\$120.11
Nickel PTFE (ENT)	175°F	23876JND	V188.A	\$120.11
Nickel PTFE (ENT)	200°F	23876JNE	V188.A	\$120.11
Nickel PTFE (ENT)	286°F	23876JNG	V188.A	\$120.11

Installation Wrenches			
Wrench - Standard	23559MB	V207	\$103.93
Wrench - Recessed	23560MB	V207	\$200.28

Select Escutcheons - Recessed Pendent Sprinklers*			
NP-1 push-on (chrome, 3/4 in)	22071F	V200	\$10.81
NP-1 push-on (white, 3/4 in)	22071M/W	V200	\$10.81
NP-2 threaded (chrome, 3/4 in)	22072M/W	V200	\$10.81

\*Refer to Page H-1 for complete list of available escutcheons

(1) Suitable for decorative applications; UL listed for corrosion resistance.

(2) Electroless Nickel PTFE (ENT) plating is UL Listed and FM Approved for corrosion resistance.



**Micromatic® Model M**  
**Standard Response**  
**Standard Coverage**  
**REPLACEMENT ONLY**  
**Glass Bulb**  
**Upright**

SIN:	VK200
K Factor:	8.0 (115)
Thread Size:	1/2 inch NPT
Base Part #:	18268



**Micromatic® Model M**  
**Standard Response**  
**Standard Coverage**  
**REPLACEMENT ONLY**  
**Glass Bulb**  
**Pendent**

SIN:	VK200
K Factor:	8.0 (115)
Thread Size:	1/2 inch NPT
Base Part #:	18269

Finish <sup>3</sup>	Temp	Part #	IPG	List Price
Standard Brass	155°F	18268AB	V113.1	\$37.66
Standard Brass	175°F	18268AD	V113.1	\$37.66
Standard Brass	200°F	18268AE	V113.1	\$37.66
Standard Brass	286°F	18268AG	V113.1	\$37.66
Standard Brass	360°F	18268AH	V118	\$36.25
Chrome	155°F	18268FB	V113.1	\$55.37
Chrome	175°F	18268FD	V113.1	\$55.37
Chrome	200°F	18268FE	V113.1	\$55.37
Chrome	286°F	18268FG	V113.1	\$55.37
Chrome	360°F	18268FH	V113.1	\$55.37
White-Polyester <sup>1</sup>	155°F	18268MB/W	V113.1	\$45.40
White-Polyester	175°F	18268MD/W	V113.1	\$45.40
White-Polyester	200°F	18268ME/W	V113.1	\$45.40
White-Polyester	286°F	18268MG/W	V113.1	\$45.40
White-Polyester	360°F	18268MH/W	V113.1	\$45.40
Black-Polyester <sup>1</sup>	155°F	18268MB/B	V113.1	\$58.64
Black-Polyester	175°F	18268MD/B	V113.1	\$58.64
Black-Polyester	200°F	18268ME/B	V113.1	\$58.64
Black-Polyester	286°F	18268MG/B	V113.1	\$58.64
Black-Polyester	360°F	18268MH/B	V113.1	\$58.64
Wax Coated <sup>2</sup>	155°F	18268CB	V113.1	\$90.90
Wax Coated	175°F	18268CD	V113.1	\$90.90
Wax Coated	200°F	18268CE	V113.1	\$90.90
Wax Coated	286°F	18268CG	V113.1	\$90.90

Finish <sup>3</sup>	Temp	Part #	IPG	List Price
Standard Brass	155°F	18269AB	V113.1	\$45.93
Standard Brass	175°F	18269AD	V113.1	\$45.93
Standard Brass	200°F	18269AE	V113.1	\$45.93
Standard Brass	286°F	18269AG	V113.1	\$45.93
Standard Brass	360°F	18269AH	V118	\$44.21
Chrome	155°F	18269FB	V113.1	\$55.37
Chrome	175°F	18269FD	V113.1	\$55.37
Chrome	200°F	18269FE	V113.1	\$55.37
Chrome	286°F	18269FG	V113.1	\$55.37
Chrome	360°F	18269FH	V118	\$53.30
White-Polyester <sup>1</sup>	155°F	18269MB/W	V113.1	\$55.37
White-Polyester	175°F	18269MD/W	V113.1	\$55.37
White-Polyester	200°F	18269ME/W	V113.1	\$55.37
White-Polyester	286°F	18269MG/W	V113.1	\$55.37
White-Polyester	360°F	18269MH/W	V113.1	\$55.37
Black-Polyester <sup>1</sup>	155°F	18269MB/B	V113.1	\$71.51
Black-Polyester	175°F	18269MD/B	V113.1	\$71.51
Black-Polyester	200°F	18269ME/B	V113.1	\$71.51
Black-Polyester	286°F	18269MG/B	V113.1	\$71.51
Black-Polyester	360°F	18269MH/B	V113.1	\$71.51
Wax Coated <sup>2</sup>	155°F	18269CB	V113.1	\$90.90
Wax Coated	175°F	18269CD	V113.1	\$90.90
Wax Coated	200°F	18269CE	V113.1	\$90.90
Wax Coated	286°F	18269CG	V113.1	\$90.90

Installation Wrenches			
Wrench - Std Upright / Pdt	21475M/B	V207	\$103.93
Wrench - Wax Coated Spk	13577W/B	V207	\$200.28
Wrench - Recessed Pndnt	13655W/B	V207	\$200.28

Select Escutcheons - Recessed Pendent Sprinklers*			
E1 push-on (chrome, ½ in)	06419AF	V200	\$10.77
E1 push-on (white, ½ in)	06419AM/W	V200	\$10.77
E2 threaded (chrome, ½ in)	11038F	V200	\$10.81

\*Refer to Page H-1 for complete list of available escutcheons

- (1) Suitable for decorative applications; UL listed for corrosion resistance.
- (2) Standard finish for wax coated sprinklers is brass.
- (3) Also available with ENT (Electroless Nickel PTFE) plating for corrosion resistance (special order with extended lead time). Contact customer service for price and availability. Special order ENT plated sprinklers may not have listings/approvals.



**XT1**  
Standard Response  
Standard Coverage  
**REPLACEMENT ONLY**  
Glass Bulb  
Upright

SIN:	VK2002
K Factor:	8.0 (115)
Thread Size:	1/2 inch NPT
Base Part #:	23871



**XT1**  
Standard Response  
Standard Coverage  
**REPLACEMENT ONLY**  
Glass Bulb  
Pendent

SIN:	VK2022
K Factor:	8.0 (115)
Thread Size:	1/2 inch NPT
Base Part #:	23872

Finish <sup>3</sup>	Temp	Part #	IPG	List Price
Standard Brass	135°F	23871AA	V113	\$36.25
Standard Brass	155°F	23871AB	V113	\$36.25
Standard Brass	175°F	23871AD	V113	\$36.25
Standard Brass	200°F	23871AE	V113	\$36.25
Standard Brass	286°F	23871AG	V113	\$36.25
Chrome	135°F	23871FA	V113	\$53.30
Chrome	155°F	23871FB	V113	\$53.30
Chrome	175°F	23871FD	V113	\$53.30
Chrome	200°F	23871FE	V113	\$53.30
Chrome	286°F	23871FG	V113	\$53.30
White-Polyester <sup>1</sup>	135°F	23871MA/W	V113	\$43.71
White-Polyester	155°F	23871MB/W	V113	\$43.71
White-Polyester	175°F	23871MD/W	V113	\$43.71
White-Polyester	200°F	23871ME/W	V113	\$43.71
White-Polyester	286°F	23871MG/W	V113	\$43.71
Black-Polyester <sup>1</sup>	135°F	23871MA/B	V113	\$56.45
Black-Polyester	155°F	23871MB/B	V113	\$56.45
Black-Polyester	175°F	23871MD/B	V113	\$56.45
Black-Polyester	200°F	23871ME/B	V113	\$56.45
Black-Polyester	286°F	23871MG/B	V113	\$56.45
Nickel PTFE (ENT) <sup>2</sup>	135°F	23871JNA	V188.A	\$148.91
Nickel PTFE (ENT)	155°F	23871JNB	V188.A	\$148.91
Nickel PTFE (ENT)	175°F	23871JND	V188.A	\$148.91
Nickel PTFE (ENT)	200°F	23871JNE	V188.A	\$148.91
Nickel PTFE (ENT)	286°F	23871JNG	V188.A	\$148.91

Finish <sup>3</sup>	Temp	Part #	IPG	List Price
Standard Brass	135°F	23872AA	V113	\$44.21
Standard Brass	155°F	23872AB	V113	\$44.21
Standard Brass	175°F	23872AD	V113	\$44.21
Standard Brass	200°F	23872AE	V113	\$44.21
Standard Brass	286°F	23872AG	V113	\$44.21
Chrome	135°F	23872FA	V113	\$53.30
Chrome	155°F	23872FB	V113	\$53.30
Chrome	175°F	23872FD	V113	\$53.30
Chrome	200°F	23872FE	V113	\$53.30
Chrome	286°F	23872FG	V113	\$53.30
White-Polyester <sup>1</sup>	135°F	23872MA/W	V113	\$53.30
White-Polyester	155°F	23872MB/W	V113	\$53.30
White-Polyester	175°F	23872MD/W	V113	\$53.30
White-Polyester	200°F	23872ME/W	V113	\$53.30
White-Polyester	286°F	23872MG/W	V113	\$53.30
Black-Polyester <sup>1</sup>	135°F	23872MA/B	V113	\$68.84
Black-Polyester	155°F	23872MB/B	V113	\$68.84
Black-Polyester	175°F	23872MD/B	V113	\$68.84
Black-Polyester	200°F	23872ME/B	V113	\$68.84
Black-Polyester	286°F	23872MG/B	V113	\$68.84
Nickel PTFE (ENT) <sup>2</sup>	135°F	23872JNA	V188.A	\$148.91
Nickel PTFE (ENT)	155°F	23872JNB	V188.A	\$148.91
Nickel PTFE (ENT)	175°F	23872JND	V188.A	\$148.91
Nickel PTFE (ENT)	200°F	23872JNE	V188.A	\$148.91
Nickel PTFE (ENT)	286°F	23872JNG	V188.A	\$148.91

Installation Wrenches			
Wrench - Standard	23559MB	V207	\$103.93
Wrench - Recessed	23560MB	V207	\$200.28

Select Escutcheons - Recessed Pendent Sprinklers*			
NP-1 push-on (chrome, 1/2 in)	22066F	V200	\$10.77
NP-1 push-on (white, 1/2 in)	22066M/W	V200	\$10.77
NP-2 threaded (chrome, 1/2 in)	22067F	V200	\$10.81

\*Refer to Page H-1 for complete list of available escutcheons

(1) Suitable for decorative applications; UL listed for corrosion resistance.  
(2) Electroless Nickel PTFE (ENT) plating is UL Listed and FM Approved for corrosion resistance.



**Micromatic® Model M**  
**Standard Response**  
**Standard Coverage**  
**Glass Bulb**  
**Conventional**

SIN: VK118  
 K Factor: 5.6 (81)  
 Thread Size: 1/2 inch NPT  
 Base Part #: 19383



**Micromatic® Model M**  
**Standard Response**  
**Standard Coverage**  
**Glass Bulb**  
**Conventional**

SIN: VK120  
 K Factor: 8.0 (115)  
 Thread Size: 3/4 inch NPT  
 Base Part #: 18270

Finish	Temp	Part #	IPG	List Price
Standard Brass	155°F	19383AB	V101	\$42.06
Standard Brass	175°F	19383AD	V101	\$42.06
Standard Brass	200°F	19383AE	V101	\$42.06
Standard Brass	286°F	19383AG	V101	\$42.06
Standard Brass	360°F	19383AH	V101	\$42.06
Chrome	155°F	19383FB	V101	\$50.87
Chrome	175°F	19383FD	V101	\$50.87
Chrome	200°F	19383FE	V101	\$50.87
Chrome	286°F	19383FG	V101	\$50.87
Chrome	360°F	19383FH	V101	\$50.87
White-Polyester <sup>1</sup>	155°F	19383MB/W	V101	\$54.52
White-Polyester	175°F	19383MD/W	V101	\$54.52
White-Polyester	200°F	19383ME/W	V101	\$54.52
White-Polyester	286°F	19383MG/W	V101	\$54.52
White-Polyester	360°F	19383MH/W	V101	\$54.52
Black-Polyester <sup>1</sup>	155°F	19383MB/B	V101	\$82.40
Black-Polyester	175°F	19383MD/B	V101	\$82.40
Black-Polyester	200°F	19383ME/B	V101	\$82.40
Black-Polyester	286°F	19383MG/B	V101	\$82.40
Black-Polyester	360°F	19383MH/B	V101	\$82.40
Nickel PTFE (ENT) <sup>2</sup>	155°F	19383JNB	V188.A	\$92.24
Nickel PTFE (ENT)	175°F	19383JND	V188.A	\$92.24
Nickel PTFE (ENT)	200°F	19383JNE	V188.A	\$92.24
Nickel PTFE (ENT)	286°F	19383JNG	V188.A	\$92.24
Nickel PTFE (ENT)	360°F	19383JNH	V188.A	\$92.24

Finish	Temp	Part #	IPG	List Price
Standard Brass	155°F	18270AB	V114	\$40.36
Standard Brass	175°F	18270AD	V114	\$40.36
Standard Brass	200°F	18270AE	V114	\$40.36
Standard Brass	286°F	18270AG	V114	\$40.36
Standard Brass	360°F	18270AH	V114	\$40.36
Chrome	155°F	18270FB	V114	\$48.66
Chrome	175°F	18270FD	V114	\$48.66
Chrome	200°F	18270FE	V114	\$48.66
Chrome	286°F	18270FG	V114	\$48.66
Chrome	360°F	18270FH	V114	\$48.66
White-Polyester <sup>1</sup>	155°F	18270MB/W	V114	\$48.66
White-Polyester	175°F	18270MD/W	V114	\$48.66
White-Polyester	200°F	18270ME/W	V114	\$48.66
White-Polyester	286°F	18270MG/W	V114	\$48.66
White-Polyester	360°F	18270MH/W	V114	\$48.66
Black-Polyester <sup>1</sup>	155°F	18270MB/B	V114	\$89.81
Black-Polyester	175°F	18270MD/B	V114	\$89.81
Black-Polyester	200°F	18270ME/B	V114	\$89.81
Black-Polyester	286°F	18270MG/B	V114	\$89.81
Black-Polyester	360°F	18270MH/B	V114	\$89.81
Nickel PTFE (ENT) <sup>2</sup>	155°F	18270JNB	V188.A	\$120.11
Nickel PTFE (ENT)	175°F	18270JND	V188.A	\$120.11
Nickel PTFE (ENT)	200°F	18270JNE	V188.A	\$120.11
Nickel PTFE (ENT)	286°F	18270JNG	V188.A	\$120.11
Nickel PTFE (ENT)	360°F	18270JNH	V188.A	\$120.11

Installation Wrenches			
Wrench - Std Upright / Pdt	21475M/B	V207	\$103.93
Wrench - Wax Coated Spk	13577W/B	V207	\$200.28
Wrench - Recessed Pndnt	13655W/B	V207	\$200.28

Select Escutcheons - Recessed Pendent Sprinklers*			
E1 push-on (chrome, 1/2 in)	06419AF	V200	\$10.77
E1 push-on (white, 1/2 in)	06419AM/W	V200	\$10.77
E2 threaded (chrome, 1/2 in)	11038F	V200	\$10.81

\*Refer to Page H-1 for complete list of available escutcheons

(1) Suitable for decorative applications and are UL listed for corrosion resistance.  
 (2) Electroless Nickel PTFE (ENT) plating is UL Listed and FM Approved for corrosion resistance.





**Standard Response  
Standard Coverage  
Glass Bulb  
Conventional**

SIN: VK1181  
K Factor: 5.6 (81)  
Thread Size: 1/2 inch NPT  
Base Part #: 23907



**Standard Response  
Standard Coverage  
Glass Bulb  
Conventional**

SIN: VK1201  
K Factor: 8.0 (115)  
Thread Size: 3/4 inch NPT  
Base Part #: 23911

Finish	Temp	Part #	IPG	List Price
Standard Brass	135°F	23907AA	V101	\$42.06
Standard Brass	155°F	23907AB	V101	\$42.06
Standard Brass	175°F	23907AD	V101	\$42.06
Standard Brass	200°F	23907AE	V101	\$42.06
Standard Brass	286°F	23907AG	V101	\$42.06
Chrome	135°F	23907FA	V101	\$50.87
Chrome	155°F	23907FB	V101	\$50.87
Chrome	175°F	23907FD	V101	\$50.87
Chrome	200°F	23907FE	V101	\$50.87
Chrome	286°F	23907FG	V101	\$50.87
White-Polyester <sup>1</sup>	135°F	23907MA/W	V101	\$54.52
White-Polyester	155°F	23907MB/W	V101	\$54.52
White-Polyester	175°F	23907MD/W	V101	\$54.52
White-Polyester	200°F	23907ME/W	V101	\$54.52
White-Polyester	286°F	23907MG/W	V101	\$54.52
Black-Polyester <sup>1</sup>	135°F	23907MA/B	V101	\$82.40
Black-Polyester	155°F	23907MB/B	V101	\$82.40
Black-Polyester	175°F	23907MD/B	V101	\$82.40
Black-Polyester	200°F	23907ME/B	V101	\$82.40
Black-Polyester	286°F	23907MG/B	V101	\$82.40
Nickel PTFE (ENT) <sup>2</sup>	135°F	23907JNA	V188.A	\$92.24
Nickel PTFE (ENT)	155°F	23907JNB	V188.A	\$92.24
Nickel PTFE (ENT)	175°F	23907JND	V188.A	\$92.24
Nickel PTFE (ENT)	200°F	23907JNE	V188.A	\$92.24
Nickel PTFE (ENT)	286°F	23907JNG	V188.A	\$92.24

Finish	Temp	Part #	IPG	List Price
Standard Brass	135°F	23911AA	V101	\$40.36
Standard Brass	155°F	23911AB	V101	\$40.36
Standard Brass	175°F	23911AD	V101	\$40.36
Standard Brass	200°F	23911AE	V101	\$40.36
Standard Brass	286°F	23911AG	V101	\$40.36
Chrome	135°F	23911FA	V101	\$48.66
Chrome	155°F	23911FB	V101	\$48.66
Chrome	175°F	23911FD	V101	\$48.66
Chrome	200°F	23911FE	V101	\$48.66
Chrome	286°F	23911FG	V101	\$48.66
White-Polyester <sup>1</sup>	135°F	23911MA/W	V101	\$48.66
White-Polyester	155°F	23911MB/W	V101	\$48.66
White-Polyester	175°F	23911MD/W	V101	\$48.66
White-Polyester	200°F	23911ME/W	V101	\$48.66
White-Polyester	286°F	23911MG/W	V101	\$48.66
Black-Polyester <sup>1</sup>	135°F	23911MA/B	V101	\$89.81
Black-Polyester	155°F	23911MB/B	V101	\$89.81
Black-Polyester	175°F	23911MD/B	V101	\$89.81
Black-Polyester	200°F	23911ME/B	V101	\$89.81
Black-Polyester	286°F	23911MG/B	V101	\$89.81
Nickel PTFE (ENT) <sup>2</sup>	135°F	23911JNA	V188.A	\$120.11
Nickel PTFE (ENT)	155°F	23911JNB	V188.A	\$120.11
Nickel PTFE (ENT)	175°F	23911JND	V188.A	\$120.11
Nickel PTFE (ENT)	200°F	23911JNE	V188.A	\$120.11
Nickel PTFE (ENT)	286°F	23911JNG	V188.A	\$120.11

Installation Wrench			
Wrench - Standard	23559MB	V207	\$103.93

(1) Suitable for decorative applications and are UL listed for corrosion resistance.  
 (2) Electroless Nickel PTFE (ENT) plating is UL Listed and FM Approved for corrosion resistance.



**Micromatic® Model M**  
**Standard Response**  
**Standard Coverage**  
**Glass Bulb**  
**Horizontal Sidewall**

**SIN:** VK104  
**K Factor:** 5.6 (81)  
**Thread Size:** 1/2 inch NPT  
**Base Part #:** 12995



**Micromatic® Model M**  
**Standard Response**  
**Standard Coverage**  
**Glass Bulb**  
**Vertical Sidewall**

**SIN:** VK106  
**K Factor:** 5.6 (81)  
**Thread Size:** 1/2 inch NPT  
**Base Part #:** 12996

Finish <sup>2</sup>	Temp	Part #	IPG	List Price
Standard Brass	155°F	12995AB	V107	\$45.60
Standard Brass	175°F	12995AD	V107	\$45.60
Standard Brass	200°F	12995AE	V107	\$45.60
Standard Brass	286°F	12995AG	V107	\$45.60
Standard Brass	360°F	12995AH	V107	\$45.60
Chrome	155°F	12995FB	V107	\$52.62
Chrome	175°F	12995FD	V107	\$52.62
Chrome	200°F	12995FE	V107	\$52.62
Chrome	286°F	12995FG	V107	\$52.62
Chrome	360°F	12995FH	V107	\$52.62
White-Polyester <sup>1</sup>	155°F	12995MB/W	V107	\$52.62
White-Polyester	175°F	12995MD/W	V107	\$52.62
White-Polyester	200°F	12995ME/W	V107	\$52.62
White-Polyester	286°F	12995MG/W	V107	\$52.62
White-Polyester	360°F	12995MH/W	V107	\$52.62
Black-Polyester <sup>1</sup>	155°F	12995MB/B	V107	\$68.29
Black-Polyester	175°F	12995MD/B	V107	\$68.29
Black-Polyester	200°F	12995ME/B	V107	\$68.29
Black-Polyester	286°F	12995MG/B	V107	\$68.29
Black-Polyester	360°F	12995MH/B	V107	\$68.29
Wax Coated	155°F	12995CB	V102	\$60.00
Wax Coated	175°F	12995CD	V102	\$60.00
Wax Coated	200°F	12995CE	V102	\$60.00
Polyester & Wax	155°F	12995VB/W	V102	\$71.05
Polyester & Wax	175°F	12995VD/W	V102	\$71.05
Polyester & Wax	200°F	12995VE/W	V102	\$71.05

Finish <sup>2</sup>	Temp	Part #	IPG	List Price
Standard Brass	155°F	12996AB	V107	\$71.72
Standard Brass	175°F	12996AD	V107	\$71.72
Standard Brass	200°F	12996AE	V107	\$71.72
Standard Brass	286°F	12996AG	V107	\$71.72
Standard Brass	360°F	12996AH	V107	\$71.72
Chrome	155°F	12996FB	V107	\$79.61
Chrome	175°F	12996FD	V107	\$79.61
Chrome	200°F	12996FE	V107	\$79.61
Chrome	286°F	12996FG	V107	\$79.61
Chrome	360°F	12996FH	V107	\$79.61
White-Polyester <sup>1</sup>	155°F	12996MB/W	V107	\$79.61
White-Polyester	175°F	12996MD/W	V107	\$79.61
White-Polyester	200°F	12996ME/W	V107	\$79.61
White-Polyester	286°F	12996MG/W	V107	\$79.61
White-Polyester	360°F	12996MH/W	V107	\$79.61
Black-Polyester <sup>1</sup>	155°F	12996MB/B	V107	\$83.40
Black-Polyester	175°F	12996MD/B	V107	\$83.40
Black-Polyester	200°F	12996ME/B	V107	\$83.40
Black-Polyester	286°F	12996MG/B	V107	\$83.40
Black-Polyester	360°F	12996MH/B	V107	\$83.40

Installation Wrenches			
Wrench - Std Upright / Pdt	21475M/B	V207	\$103.93
Wrench - Wax Coated Spk	13577W/B	V207	\$200.28
Wrench - Recessed HSW	13655W/B	V207	\$200.28

Select Escutcheons - Recessed Pendent Sprinklers*			
E1 push-on (chrome, ½ in)	06419AF	V200	\$10.77
E1 push-on (white, ½ in)	06419AM/W	V200	\$10.77
E2 threaded (chrome, ½ in)	11038F	V200	\$10.81

\*Refer to Page H-1 for complete list of available escutcheons

- (1) Suitable for decorative applications and are UL listed for corrosion resistance.
- (2) Also available with ENT (Electroless Nickel PTFE) plating for corrosion resistance (special order with extended lead time).  
Contact customer service for price and availability. Special order ENT plated sprinklers may not have listings/approvals.



**Standard Response**  
**Standard Coverage**  
**Glass Bulb**  
**Concealed Pendant**

SIN: VK4921<sup>3</sup>  
K Factor: 5.6 (81)  
Thread Size: 1/2 inch NPT  
Base Part #: 24683A

Finish	Temp	Part #	IPG	List Price
Standard Brass	155°F	24683AB	V112	\$80.82
Standard Brass	200°F	24683AE	V112	\$80.82
Installation Wrench		23143	V207	\$62.65

**Standard Cover Plate<sup>1,2</sup>**

Diameter = 2-3/4 inches  
Thread On (2 slit base)



Finish	Temp	Part #	IPG	List Price
Polished Chrome	135°F	23190FA	V208	\$126.88
Polished Chrome	165°F	23190FC	V208	\$126.88
White	135°F	23190MA/W	V208	\$47.67
White	165°F	23190MC/W	V208	\$47.67
Ivory	135°F	23190MA/I	V209	\$60.57
Ivory	165°F	23190MC/I	V209	\$60.57
Black	135°F	23190MA/B	V209	\$60.57
Black	165°F	23190MC/B	V209	\$60.57
Bright Brass	135°F	23190BA	V209	\$60.57
Bright Brass	165°F	23190BC	V209	\$60.57
Brushed Brass	135°F	23190BA/B	V209	\$60.57
Brushed Brass	165°F	23190BC/B	V209	\$60.57
Antique Brass	135°F	23190BA/A	V209	\$60.57
Antique Brass	165°F	23190BC/A	V209	\$60.57
Brushed Copper	135°F	23190EA/B	V209	\$60.57
Brushed Copper	165°F	23190EC/B	V209	\$60.57
Brushed Chrome	135°F	23190FA/B	V209	\$60.57
Brushed Chrome	165°F	23190FC/B	V209	\$60.57
Cover Plate Install Tool		14412	V205	\$17.84

**Large Cover Plate<sup>1,2</sup>**

Diameter = 3-5/16 inches  
Thread On (2 slit base)



Finish	Temp	Part #	IPG	List Price
Polished Chrome	135°F	23174FA	V208	\$126.88
Polished Chrome	165°F	23174FC	V208	\$126.88
White	135°F	23174MA/W	V208	\$47.67
White	165°F	23174MC/W	V208	\$47.67
Ivory	135°F	23174MA/I	V209	\$60.57
Ivory	165°F	23174MC/I	V209	\$60.57
Black	135°F	23174MA/B	V209	\$60.57
Black	165°F	23174MC/B	V209	\$60.57
Bright Brass	135°F	23174BA	V209	\$60.57
Bright Brass	165°F	23174BC	V209	\$60.57
Brushed Brass	135°F	23174BA/B	V209	\$60.57
Brushed Brass	165°F	23174BC/B	V209	\$60.57
Antique Brass	135°F	23174BA/A	V209	\$60.57
Antique Brass	165°F	23174BC/A	V209	\$60.57
Brushed Copper	135°F	23174EA/B	V209	\$60.57
Brushed Copper	165°F	23174EC/B	V209	\$60.57
Brushed Chrome	135°F	23174FA/B	V209	\$60.57
Brushed Chrome	165°F	23174FC/B	V209	\$60.57
Cover Plate Install Tool		14867	V205	\$17.84

(1) Covers sold separately. See page F-8 for custom colors.

(2) See section H for more cover plate options.

(3) Model VK4921 available with special ENT finish for use in certain corrosive environments. Contact customer service for price and availability.



**Micromatic® Model M**  
Standard Response  
Standard Coverage  
**FUSIBLE LINK**  
Upright Sprinklers

Thread Size: 1/2 inch NPT



**Micromatic® Model M**  
Standard Response  
Standard Coverage  
**FUSIBLE LINK**  
Pendent Sprinklers

Thread Size: 1/2 inch NPT

Finish	Temp	Part #	IPG	List Price
<b>VK108 - 5.6 (81) K Factor - 1/2 in NPT - UPRIGHT</b>				
Standard Brass	165°F	12973AC	V105	\$49.93
Standard Brass	220°F	12973AF	V105	\$49.93
Standard Brass	286°F	12973AG	V105	\$49.93
Chrome	165°F	12973FC	V105	\$62.38
Chrome	220°F	12973FF	V105	\$62.38
Chrome	286°F	12973FG	V105	\$62.38
White-Polyester	165°F	12973MC/W	V105	\$78.79
White-Polyester	220°F	12973MF/W	V105	\$78.79
White-Polyester	286°F	12973MG/W	V105	\$78.79
Black-Polyester	165°F	12973MC/B	V105	\$78.79
Black-Polyester	220°F	12973MF/B	V105	\$78.79
Black-Polyester	286°F	12973MG/B	V105	\$78.79
Wax Coated <sup>1</sup>	165°F	12973CC	V106	\$93.00
Wax Coated	220°F	12973CF	V106	\$93.00
Standard Wrench		21475M/B	V207	\$103.93
Wrench-Recessed & Wax		13577W/B	V207	\$200.28

Finish	Temp	Part #	IPG	List Price
<b>VK110 - 5.6 (81) K Factor - 1/2 in NPT - PENDENT</b>				
Standard Brass	165°F	12972AC	V105	\$49.93
Standard Brass	220°F	12972AF	V105	\$49.93
Standard Brass	286°F	12972AG	V105	\$49.93
Chrome	165°F	12972FC	V105	\$60.34
Chrome	220°F	12972FF	V105	\$60.34
Chrome	286°F	12972FG	V105	\$60.34
White-Polyester	165°F	12972MC/W	V105	\$78.79
White-Polyester	220°F	12972MF/W	V105	\$78.79
White-Polyester	286°F	12972MG/W	V105	\$78.79
Black-Polyester	165°F	12972MC/B	V105	\$78.79
Black-Polyester	220°F	12972MF/B	V105	\$78.79
Black-Polyester	286°F	12972MG/B	V105	\$78.79
Wax Coated <sup>1</sup>	165°F	12972CC	V106	\$93.00
Wax Coated	220°F	12972CF	V106	\$93.00
Standard Wrench		21475M/B	V207	\$103.93
Wrench-Recessed & Wax		13577W/B	V207	\$200.28

<b>Model E-1 (push-on) Recessed Escutcheons*</b>				
Finish	Size	Part #	IPG	List Price
Bright Brass	1/2"	06419AB	V201	\$51.83
Polished Chrome	1/2"	06419AF	V200	\$10.77
White	1/2"	06419AM/W	V200	\$10.77
Black	1/2"	06419AM/B	V201	\$22.66
<b>Model E-2 (thread-on) Recessed Escutcheons*</b>				
Polished Chrome	1/2"	11038F	V200	\$10.81
White	1/2"	11038M/W	V200	\$10.81

\*Refer to Page H-1 for complete list of available escutcheons

(1) Standard finish for wax coated sprinklers is brass.



**Micromatic® Model M**  
Standard Response  
Standard Coverage  
**FUSIBLE LINK**

**Upright Sprinklers**  
Thread Size: 3/4 inch NPT



**Micromatic® Model M**  
Standard Response  
Standard Coverage  
**FUSIBLE LINK**

**Pendent Sprinklers**  
Thread Size: 3/4 inch NPT

Finish	Temp	Part #	IPG	List Price
<b>VK204 - 8.0 (115) K Factor - 3/4 in NPT - UPRIGHT</b>				
Standard Brass	165°F	18253AC	V116	\$35.44
Standard Brass	220°F	18253AF	V116	\$35.44
Standard Brass	286°F	18253AG	V116	\$35.44
Chrome	165°F	18253FC	V116	\$41.08
Chrome	220°F	18253FF	V116	\$41.08
Chrome	286°F	18253FG	V116	\$41.08
White-Polyester	165°F	18253MC/W	V116	\$42.78
White-Polyester	220°F	18253MF/W	V116	\$42.78
White-Polyester	286°F	18253MG/W	V116	\$42.78
Black-Polyester	165°F	18253MC/B	V116	\$69.37
Black-Polyester	220°F	18253MF/B	V116	\$69.37
Black-Polyester	286°F	18253MG/B	V116	\$69.37
Wax Coated <sup>1</sup>	165°F	18253CC	V117	\$75.28
Wax Coated	220°F	18253CF	V117	\$75.28
<b>VK204 - 8.0 (115) K Factor - 1/2 in NPT - UPRIGHT</b>				
<b>REPLACEMENT ONLY<sup>2</sup></b>				
Standard Brass	165°F	18255AC	V116	\$62.73
Standard Brass	220°F	18255AF	V116	\$62.73
Standard Brass	286°F	18255AG	V116	\$62.73
Chrome	165°F	18255FC	V116	\$72.30
Chrome	220°F	18255FF	V116	\$72.30
Chrome	286°F	18255FG	V116	\$72.30
White-Polyester	165°F	18255MC/W	V116	\$74.84
White-Polyester	220°F	18255MF/W	V116	\$74.84
White-Polyester	286°F	18255MG/W	V116	\$74.84
Wax Coated <sup>1</sup>	165°F	18255CC	V117	\$98.82
Wax Coated	220°F	18255CF	V117	\$98.82
Std Sprinkler Wrench		21475M/B	V207	\$103.93
Wrench-Recessed & Wax		13577W/B	V207	\$200.28

Finish	Temp	Part #	IPG	List Price
<b>VK206 - 8.0 (115) K Factor - 3/4 in NPT - PENDENT</b>				
Standard Brass	165°F	18254AC	V116	\$35.44
Standard Brass	220°F	18254AF	V116	\$35.44
Standard Brass	286°F	18254AG	V116	\$35.44
Chrome	165°F	18254FC	V116	\$41.08
Chrome	220°F	18254FF	V116	\$41.08
Chrome	286°F	18254FG	V116	\$41.08
White-Polyester	165°F	18254MC/W	V116	\$42.78
White-Polyester	220°F	18254MF/W	V116	\$42.78
White-Polyester	286°F	18254MG/W	V116	\$42.78
Black-Polyester	165°F	18254MC/B	V116	\$69.37
Black-Polyester	220°F	18254MF/B	V116	\$69.37
Black-Polyester	286°F	18254MG/B	V116	\$69.37
Wax Coated <sup>1</sup>	165°F	18254CC	V117	\$75.28
Wax Coated	220°F	18254CF	V117	\$75.28
<b>VK206 - 8.0 (115) K Factor - 1/2 in NPT - PENDENT</b>				
<b>REPLACEMENT ONLY<sup>2</sup></b>				
Standard Brass	165°F	18256AC	V116	\$62.73
Standard Brass	220°F	18256AF	V116	\$62.73
Standard Brass	286°F	18256AG	V116	\$62.73
Chrome	165°F	18256FC	V116	\$72.30
Chrome	220°F	18256FF	V116	\$72.30
Chrome	286°F	18256FG	V116	\$72.30
White-Polyester	165°F	18256MC/W	V116	\$74.84
White-Polyester	220°F	18256MF/W	V116	\$74.84
White-Polyester	286°F	18256MG/W	V116	\$74.84
Wax Coated <sup>1</sup>	165°F	18256CC	V117	\$98.82
Wax Coated	220°F	18256CF	V117	\$98.82
Std Sprinkler Wrench		21475M/B	V207	\$103.93
Wrench-Recessed & Wax		13577W/B	V207	\$200.28

<b>Model E-1 (push-on) Recessed Escutcheons*</b>				
Finish	Size	Part #	IPG	List Price
Bright Brass	3/4"	20369B	V201	\$51.83
Polished Chrome	3/4"	20369F	V200	\$10.81
White	3/4"	20369M/W	V200	\$10.81
Black	3/4"	20369M/B	V201	\$22.66
<b>Model E-2 (thread-on) Recessed Escutcheons*</b>				
Polished Chrome	3/4"	20130F	V200	\$10.81
White	3/4"	20130M/W	V200	\$10.81

\* Refer to Page H-1 for complete list of available escutcheons

(1) Standard finish for wax coated sprinklers is brass.

(2) REPLACEMENT ONLY - 8.0 K Factor sprinklers with 1/2" NPT thread size are not intended for use in new installations.



**Micromatic® HP**  
**HIGH PRESSURE - 250 PSI**  
Standard Response  
Standard Coverage  
Glass Bulb  
Upright

SIN: VK124  
K Factor: 5.6 (81)  
Thread Size: 1/2 inch NPT  
Base Part #: 09993



**Micromatic® HP**  
**HIGH PRESSURE - 250 PSI**  
Standard Response  
Standard Coverage  
Glass Bulb  
Pendent

SIN: VK122  
K Factor: 5.6 (81)  
Thread Size: 1/2 inch NPT  
Base Part #: 09992

Finish <sup>3</sup>	Temp	Part #	IPG	List Price
Standard Brass	155°F	09993AB	V103	\$28.42
Standard Brass	175°F	09993AD	V103	\$28.42
Standard Brass	200°F	09993AE	V103	\$28.42
Standard Brass	286°F	09993AG	V103	\$28.42
Standard Brass	360°F	09993AH	V109	\$30.36
Chrome	155°F	09993FB	V103	\$35.37
Chrome	175°F	09993FD	V103	\$35.37
Chrome	200°F	09993FE	V103	\$35.37
Chrome	286°F	09993FG	V103	\$35.37
White-Polyester <sup>1</sup>	155°F	09993MB/W	V103	\$38.73
White-Polyester	175°F	09993MD/W	V103	\$38.73
White-Polyester	200°F	09993ME/W	V103	\$38.73
White-Polyester	286°F	09993MG/W	V103	\$38.73
Black-Polyester <sup>1</sup>	155°F	09993MB/B	V103	\$57.80
Black-Polyester	175°F	09993MD/B	V103	\$57.80
Black-Polyester	200°F	09993ME/B	V103	\$57.80
Black-Polyester	286°F	09993MG/B	V103	\$57.80
Nickel PTFE (ENT) <sup>3</sup>	155°F	09993JNB	V188.A	\$92.24
Nickel PTFE (ENT)	175°F	09993JND	V188.A	\$92.24
Nickel PTFE (ENT)	200°F	09993JNE	V188.A	\$92.24
Nickel PTFE (ENT)	286°F	09993JNG	V188.A	\$92.24
Std Sprinkler Wrench		21475M/B	V207	\$103.93

Finish <sup>3</sup>	Temp	Part #	IPG	List Price
Standard Brass	155°F	09992AB	V103	\$28.42
Standard Brass	175°F	09992AD	V103	\$28.42
Standard Brass	200°F	09992AE	V103	\$28.42
Standard Brass	286°F	09992AG	V103	\$28.42
Standard Brass	360°F	09992AH	V109	\$30.36
Chrome	155°F	09992FB	V103	\$33.23
Chrome	175°F	09992FD	V103	\$33.23
Chrome	200°F	09992FE	V103	\$33.23
Chrome	286°F	09992FG	V103	\$33.23
White-Polyester <sup>1</sup>	155°F	09992MB/W	V103	\$36.80
White-Polyester	175°F	09992MD/W	V103	\$36.80
White-Polyester	200°F	09992ME/W	V103	\$36.80
White-Polyester	286°F	09992MG/W	V103	\$36.80
Black-Polyester <sup>1</sup>	155°F	09992MB/B	V103	\$57.80
Black-Polyester	175°F	09992MD/B	V103	\$57.80
Black-Polyester	200°F	09992ME/B	V103	\$57.80
Black-Polyester	286°F	09992MG/B	V103	\$57.80
Std Sprinkler Wrench		21475M/B	V207	\$103.93
Wrench for Wax Coated		13577W/B	V207	\$200.28
Wrench for Recessed		13655W/B	V207	\$200.28

NOTE - High Pressure (HP) = Working pressure to 250 psi (1724 kPa)

Model E-1 (push-on) Recessed Escutcheons*				
Finish	Size	Part #	IPG	List Price
Bright Brass	1/2"	06419AB	V201	\$51.83
Polished Chrome	1/2"	06419AF	V200	\$10.77
White	1/2"	06419AM/W	V200	\$10.77
Black	1/2"	06419AM/B	V201	\$22.66
Model E-2 (thread-on) Recessed Escutcheons*				
Polished Chrome	1/2"	11038F	V200	\$10.81
White	1/2"	11038M/W	V200	\$10.81

\*Refer to Page H-1 for complete list of available escutcheons

- (1) Suitable for decorative applications; UL listed for corrosion resistance.
- (2) Standard finish for wax coated sprinklers is brass.
- (3) Electroless Nickel PTFE (ENT) plating is UL Listed and FM Approved for corrosion resistance.



**XT1**  
**HIGH PRESSURE - 250 PSI**  
Standard Response  
Standard Coverage  
Glass Bulb  
Upright

SIN:	VK1001
K Factor:	5.6 (81)
Thread Size:	1/2 inch NPT
Base Part #:	23867



**XT1**  
**HIGH PRESSURE - 250 PSI**  
Standard Response  
Standard Coverage  
Glass Bulb  
Pendent

SIN:	VK1021
K Factor:	5.6 (81)
Thread Size:	1/2 inch NPT
Base Part #:	23868

Finish	Temp	Part #	IPG	List Price
Standard Brass	135°F	23867AA	V101	\$31.43
Standard Brass	155°F	23867AB	V101	\$31.43
Standard Brass	175°F	23867AD	V101	\$31.43
Standard Brass	200°F	23867AE	V101	\$31.43
Standard Brass	286°F	23867AG	V101	\$31.43
Chrome	135°F	23867FA	V101	\$50.42
Chrome	155°F	23867FB	V101	\$50.42
Chrome	175°F	23867FD	V101	\$50.42
Chrome	200°F	23867FE	V101	\$50.42
Chrome	286°F	23867FG	V101	\$50.42
White-Polyester <sup>1</sup>	135°F	23867MA/W	V101	\$50.42
White-Polyester <sup>1</sup>	155°F	23867MB/W	V101	\$50.42
White-Polyester	175°F	23867MD/W	V101	\$50.42
White-Polyester	200°F	23867ME/W	V101	\$50.42
White-Polyester	286°F	23867MG/W	V101	\$50.42
Black-Polyester <sup>1</sup>	135°F	23867MA/B	V101	\$78.58
Black-Polyester <sup>1</sup>	155°F	23867MB/B	V101	\$78.58
Black-Polyester	175°F	23867MD/B	V101	\$78.58
Black-Polyester	200°F	23867ME/B	V101	\$78.58
Black-Polyester	286°F	23867MG/B	V101	\$78.58
Nickel PTFE (ENT) <sup>2</sup>	135°F	23867JNA	V188.A	\$92.24
Nickel PTFE (ENT) <sup>2</sup>	155°F	23867JNB	V188.A	\$92.24
Nickel PTFE (ENT)	175°F	23867JND	V188.A	\$92.24
Nickel PTFE (ENT)	200°F	23867JNE	V188.A	\$92.24
Nickel PTFE (ENT)	286°F	23867JNG	V188.A	\$92.24

Installation Wrenches			
Wrench - Straight	23559MB	V207	\$103.93
Wrench - Recessed	23560MB	V207	\$200.28

Finish	Temp	Part #	IPG	List Price
Standard Brass	135°F	23868AA	V101	\$38.64
Standard Brass	155°F	23868AB	V101	\$38.64
Standard Brass	175°F	23868AD	V101	\$38.64
Standard Brass	200°F	23868AE	V101	\$38.64
Standard Brass	286°F	23868AG	V101	\$38.64
Chrome	135°F	23868FA	V101	\$42.57
Chrome	155°F	23868FB	V101	\$42.57
Chrome	175°F	23868FD	V101	\$42.57
Chrome	200°F	23868FE	V101	\$42.57
Chrome	286°F	23868FG	V101	\$42.57
White-Polyester <sup>1</sup>	135°F	23868MA/W	V101	\$42.57
White-Polyester <sup>1</sup>	155°F	23868MB/W	V101	\$42.57
White-Polyester	175°F	23868MD/W	V101	\$42.57
White-Polyester	200°F	23868ME/W	V101	\$42.57
White-Polyester	286°F	23868MG/W	V101	\$42.57
Black-Polyester <sup>1</sup>	135°F	23868MA/B	V101	\$78.58
Black-Polyester <sup>1</sup>	155°F	23868MB/B	V101	\$78.58
Black-Polyester	175°F	23868MD/B	V101	\$78.58
Black-Polyester	200°F	23868ME/B	V101	\$78.58
Black-Polyester	286°F	23868MG/B	V101	\$78.58
Nickel PTFE (ENT) <sup>2</sup>	135°F	23868JNA	V188.A	\$92.24
Nickel PTFE (ENT) <sup>2</sup>	155°F	23868JNB	V188.A	\$92.24
Nickel PTFE (ENT)	175°F	23868JND	V188.A	\$92.24
Nickel PTFE (ENT)	200°F	23868JNE	V188.A	\$92.24
Nickel PTFE (ENT)	286°F	23868JNG	V188.A	\$92.24

Select Escutcheons - Recessed Pendent Sprinklers*			
NP-1 push-on (chrome, 1/2 in)	22066F	V200	\$10.77
NP-1 push-on (white, 1/2 in)	22066M/W	V200	\$10.77
NP-2 threaded (chrome, 1/2 in)	22067F	V200	\$10.81

\*Refer to Page H-1 for complete list of available escutcheons

(1) Suitable for decorative applications; UL listed for corrosion resistance.  
(2) Electroless Nickel PTFE (ENT) plating is UL Listed and FM Approved for corrosion resistance.



**ULTRA HIGH TEMPERATURE**

**Standard Response**  
**Standard Coverage**  
**Glass Bulb**  
**Upright**

<b>SIN:</b>	VK100
<b>K Factor:</b>	5.6 (81)
<b>Thread Size:</b>	1/2 inch NPT
<b>Base Part #:</b>	12986



**ULTRA HIGH TEMPERATURE**

**Standard Response**  
**Standard Coverage**  
**Glass Bulb**  
**Pendent**

<b>SIN:</b>	VK102
<b>K Factor:</b>	5.6 (81)
<b>Thread Size:</b>	1/2 inch NPT
<b>Base Part #:</b>	12987

Finish <sup>3</sup>	Temp	Part #	IPG	List Price
Standard Brass	500°F	12986AL	V108	\$80.25
Chrome	500°F	12986FL	V108	\$92.50
White-Polyester <sup>1</sup>	500°F	12986ML/W	V108	\$95.35
Black-Polyester <sup>1</sup>	500°F	12986ML/B	V108	\$95.35
<b>HIGH PRESSURE - VK124</b>				
Standard Brass	500°F	09993AL	V109	\$85.03
Std Sprinkler Wrench		21475M/B	V207	\$103.93

Finish <sup>3</sup>	Temp	Part #	IPG	List Price
Standard Brass	500°F	12987AL	V108	\$80.25
Chrome	500°F	12987FL	V108	\$87.98
<b>HIGH PRESSURE - VK122</b>				
Standard Brass	500°F	09992AL	V109	\$85.03
Chrome	500°F	09992FL	V109	\$98.75
Std Sprinkler Wrench		21475M/B	V207	\$103.93
Wrench for Recessed		13655W/B	V207	\$200.28



**ULTRA HIGH TEMPERATURE**

**Standard Response**  
**Standard Coverage**  
**Glass Bulb**  
**Upright**

<b>SIN:</b>	VK200
<b>K Factor:</b>	8.0 (115)
<b>Thread Size:</b>	3/4 inch NPT
<b>Base Part #:</b>	18263



**ULTRA HIGH TEMPERATURE**

**Standard Response**  
**Standard Coverage**  
**Glass Bulb**  
**Pendent**

<b>SIN:</b>	VK202
<b>K Factor:</b>	8.0 (115)
<b>Thread Size:</b>	3/4 inch NPT
<b>Base Part #:</b>	18264

Finish <sup>3</sup>	Temp	Part #	IPG	List Price
Standard Brass	500°F	18263AL	V118	\$49.26
Chrome	500°F	18263FL	V118	\$57.01
Black-Polyester <sup>1</sup>	500°F	18263ML/B	V118	\$76.05
<b>1/2 inch NPT thread - REPLACEMENT ONLY<sup>2</sup></b>				
Standard Brass	500°F	18268AL	V118	\$85.49
Std Sprinkler Wrench		21475M/B	V207	\$103.93

Finish <sup>3</sup>	Temp	Part #	IPG	List Price
Standard Brass	500°F	18264AL	V118	\$56.83
Chrome	500°F	18264FL	V118	\$65.77
<b>1/2 inch NPT thread - REPLACEMENT ONLY<sup>2</sup></b>				
Standard Brass	500°F	18269AL	V118	\$96.12
Chrome	500°F	18269FL	V118	\$76.48
Std Sprinkler Wrench		21475M/B	V207	\$103.93
Wrench for Recessed		13655W/B	V207	\$200.28

<b>Model E-1 (push-on) Recessed Escutcheons*</b>				
Finish <sup>3</sup>	Size	Part #	IPG	List Price
Bright Brass	1/2"	06419AB	V201	\$51.83
Polished Chrome	1/2"	06419AF	V200	\$10.77
White	1/2"	06419AM/W	V200	\$10.77
Black	1/2"	06419AM/B	V201	\$22.66
<b>Model E-2 (thread-on) Recessed Escutcheons*</b>				
Polished Chrome	1/2"	11038F	V200	\$10.81
White	1/2"	11038M/W	V200	\$10.81

<b>Model E-1 (push-on) Recessed Escutcheons*</b>				
Finish <sup>3</sup>	Size	Part #	IPG	List Price
Bright Brass	3/4"	20369B	V201	\$51.83
Polished Chrome	3/4"	20369F	V200	\$10.81
White	3/4"	20369M/W	V200	\$10.81
Black	3/4"	20369M/B	V201	\$22.66
<b>Model E-2 (thread-on) Recessed Escutcheons*</b>				
Polished Chrome	3/4"	20130F	V200	\$10.81
White	3/4"	20135M/W	V200	\$33.60

\*Refer to Page H-1 for complete list of available escutcheons

- (1) Polyester sprinklers are suitable for decorative applications and are UL listed for corrosion resistance.
- (2) REPLACEMENT ONLY - 8.0 K Factor sprinklers with 1/2" NPT thread size are not intended for use in new installations.
- (3) Also available with ENT (Electroless Nickel PTFE) plating for corrosion resistance (special order with extended lead time).  
 Contact customer service for price and availability. Special order ENT plated sprinklers may not have listings/approvals.





**CORROSION RESISTANT**

Standard Response  
Standard Coverage  
Glass Bulb  
Stainless Steel - Upright

SIN: VK130  
K Factor: 5.6 (81)  
Thread Size: 1/2 inch NPT  
Base Part #: 05012B

Finish	Temp	Part #	IPG	List Price
Stainless Steel	155°F	05012BB	V110	\$683.58
Stainless Steel	175°F	05012BD	V110	\$683.58
Stainless Steel	200°F	05012BE	V110	\$683.58
Stainless Steel	286°F	05012BG	V110	\$683.58
Stainless Steel	360°F	05012BH	V110	\$683.58
Stainless Steel	500°F	05012BL	V110	\$758.83
Stainless Steel	OPEN	06501BZ	V110	\$705.31
Wax Coated	155°F	05012BCB	V110	\$738.29
Wax Coated	175°F	05012BCD	V110	\$738.29
Wax Coated	200°F	05012BCE	V110	\$738.29
Std Sprinkler Wrench		21475M/B	V207	\$103.93

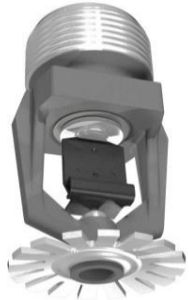


**CORROSION RESISTANT**

Standard Response  
Standard Coverage  
Glass Bulb  
Stainless Steel - Pendent

SIN: VK132  
K Factor: 5.6 (81)  
Thread Size: 1/2 inch NPT  
Base Part #: 06483B

Finish	Temp	Part #	IPG	List Price
Stainless Steel	155°F	06483BB	V110	\$719.08
Stainless Steel	175°F	06483BD	V110	\$719.08
Stainless Steel	200°F	06483BE	V110	\$719.08
Stainless Steel	286°F	06483BG	V110	\$719.08
Stainless Steel	360°F	06483BH	V110	\$719.08
Stainless Steel	500°F	06483BL	V110	\$758.83
Stainless Steel	OPEN	06502BZ	V110	\$705.31
Wax Coated	155°F	06483BCB	V110	\$738.29
Wax Coated	175°F	06483BCD	V110	\$738.29
Wax Coated	200°F	06483BCE	V110	\$738.29
Std Sprinkler Wrench		21475M/B	V207	\$103.93



**CORROSION RESISTANT**

Standard Response  
Standard Coverage  
Fusible Link  
Stainless Steel - Pendent

SIN: VK368  
K Factor: 8.0 (115)  
Thread Size: 3/4 inch NPT  
Base Part #: 21928

Finish	Temp	Part #	IPG	List Price
Stainless Steel	205°F	21928E	V110	\$1,424.71
Std Sprinkler Wrench		21475M/B	V207	\$103.93

**FM Storage / Non-Storage**

Standard Response  
Standard Coverage  
Glass Bulb  
Upright

SIN: VK598  
K Factor: 25.2 (363)  
Thread Size: 1 inch NPT  
Base Part #: 19522



Finish	Temp	Part #	IPG	List Price
Standard Brass	155°F	19522AB	V157	\$226.26
Standard Brass	175°F	19522AD	V157	\$226.26
Standard Brass	200°F	19522AE	V157	\$226.26
Standard Brass	286°F	19522AG	V157	\$226.26
Spk Wrench Pndnt ESFR		13635W/B	V207	\$187.85

