



2018 Security Solutions Guide



Vicon's integrated product strategy means having innovative products at every layer of the security solutions stack – and within each layer – engineering them to work together seamlessly. With Vicon's high-performance security products that stand alone or work together, you can get the best fit for an organization. We focus on industry-specific business models and examine common pain points to develop comprehensive security solutions. We help hundreds of organizations from diverse industries, including corrections, education, government, law enforcement, commercial, healthcare, transportation and utilities, across the world, to monitor their premises and enhance safety.

Vicon's trusted products and solutions are installed around the globe in over 40,000 companies in a variety of vertical markets. For more information about Vicon, visit our website: www.vicon-security.com



For your surveillance needs...

Vicon's video solutions help you:

- Monitor high-performance video
- Simplify your security operations
- Gain fast access to incidents for a quicker response
- Save money with cost-effective options



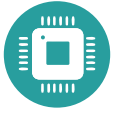
choose Vicon.

WHY US?

- ✓ Integrated video solutions deliver innovative technology
- ✓ Single point-of-contact for all your security needs
- ✓ Standards-based open platform design allows for easy integration
- ✓ Scalable security systems designed for tomorrow's growth
- ✓ Unrivaled support with technical help, in-depth training and custom solutions

Discover the Advanced Simplicity of Valerus VMS

Valerus is a powerful and intuitive VMS that is intended for users of all levels, designed for ease-of-installation, with an easy-to-use web-based interface and a standards-based true open platform philosophy. Valerus delivers features for sophisticated live monitoring, centralized management and high-performance video recording.



3 LICENSE TIERS

Choose what's right for you

CORE and PRO license pricing is based on per edge device.

Three license levels are designed to handle all types of security demands; this allows Valerus to meet your specific needs based on the requirements of your application and scale of your operation, ensuring long-term value.

TRY

- FREE
- Up to 6 edge devices
- 5 concurrent clients
- Limited features

CORE

- Up to 35 edge devices
- 10 concurrent clients
- Standard features

PRO

- Unlimited edge devices
- Unlimited concurrent clients
- Advanced features



Simplified DEPLOYMENT OPTIONS

- Thin-client browser-based architecture
- Automated discovery and programming tools have most systems configured in *minutes*
- A *single* global activation key unlocks the system



Simplified OPERATION

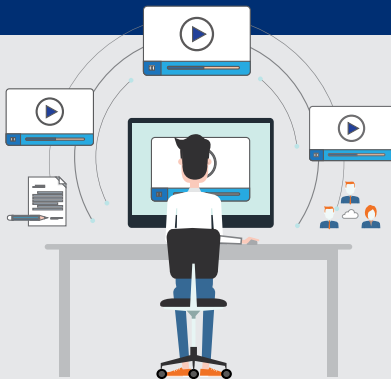
- Flexible and intuitive interface puts users at ease
- Pre-set favorite views for easy camera call or other web-based content
- Preconfigured VAX integration



Simplified MAINTENANCE

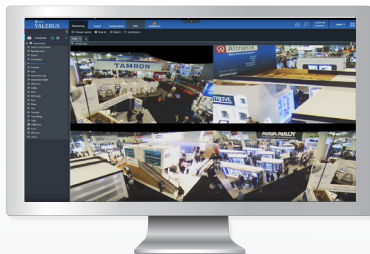
- A *health dashboard* provides system-wide performance data
- Automatically *back up* configuration settings on a regular basis
- Push out software updates to *all NVRs on the network*

Thin-Client Architecture



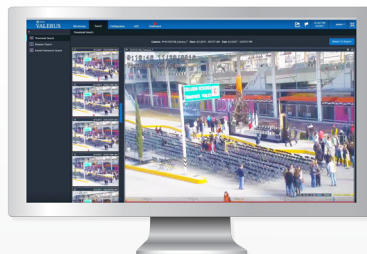
Valerus was designed with a **thin-client architecture**, enabling system access via a browser interface. This provides easy access from any network-connected PC without the need for a thick-client application, which *simplifies the entire user experience*.

Valerus Video Management Software Features



Built-In Dewarping and Viewing

Controls for hemispheric cameras allow users to dewarp compatible fisheye 360° cameras



Powerful Search Functions

Thumbnail Search: View video frame thumbnails over a specified time
Museum Search: Scan the database for changes in a specific region of interest



Enhanced Health Dashboard

Detailed graphs provide statistics for every camera and NVR on the network, to assess system behavior and diagnose problems

Valerus Product Details



Available as mini, rack-mount or desktop unit

Application / Recording Servers

- ▶ Vicon certified hardware; includes Valerus software
- ▶ Same hardware used for application/web server, recording server or all-in-one server
- ▶ Application/web server manages the system; provides tools to centrally manage system, run the web server and service web clients
- ▶ Recording servers communicate, stream and record video and audio from cameras/encoders
- ▶ Mini recorder server supports up to 35 cameras; standard recording server supports up to 70 cameras



Shadow Servers with Internal RAID

- ▶ Preconfigured high-capacity recording server with Valerus software and internal RAID 5 or RAID 6 storage
- ▶ Support for high-definition, megapixel and third-party cameras
- ▶ Available in 1U (4 bay), 2U (8 bay) and 4U (24 bay) versions
- ▶ Available in many storage options up to 152 TB
- ▶ Internal RAID with hot-swappable drives
- ▶ Supports up to 100 cameras



Available as rack-mount or desktop unit

Client Viewing Station

- ▶ Vicon certified hardware
- ▶ Optimized to run Valerus in web browser
- ▶ Easy access to required screens
- ▶ Available with two monitor, four monitor and six monitor outputs

No thick-client required!



Mobile App

- ▶ Designed to run on Apple® and Android™ smartphones and tablets
- ▶ Access via Wi-Fi, 3G or 4G connections
- ▶ Allows to securely connect to Valerus systems using HTTPS
- ▶ View live or recorded video from any device on the system
- ▶ View concurrent multiple video streams: four video streams on smartphones and up to nine on tablets
- ▶ Use touch, drag and pinch-to-zoom motions to control the interface

Valerus Edge Devices

Whether your installation uses analog or IP network cameras, using an encoder ensures camera input is compatible with a Valerus surveillance system.



VN-KEYPAD

- ▶ Compatible with Valerus/ViconNet control systems, including VMDC
- ▶ Connection via USB as a serial device
- ▶ 3 function proportional joystick for pan, tilt and zoom
- ▶ Jog/Shuttle for playback
- ▶ Backlit rubber keys
- ▶ Adaptable for both right- and left-handed operators



ENC-H264-16

- ▶ 16-channel encoder
- ▶ Supports AHD, TVI, and up to 960H resolution
- ▶ Supports dual streaming
- ▶ H.264 compression
- ▶ 4 alarm inputs; 1 alarm output
- ▶ Compatible with Valerus VMS



VN-901T

- ▶ Single analog camera video input; 1 looping output
- ▶ Ideal solution for creating hybrid analog/IP systems
- ▶ H.264, MPEG-4 and M-JPEG compression
- ▶ Supports dual streaming
- ▶ Full support of NTSC/EIA and PAL/CCIR video cameras
- ▶ Auto sensing NTSC/PAL
- ▶ PoE or 12 VDC/24 VAC
- ▶ ONVIF compliant

LEVERAGE THE LATEST VMS TECHNOLOGY



*while maintaining
your legacy
investments*



VICON
Simple Solutions for a Complex World

VAX Access Control

Maximum Security with Total Flexibility



VAX access control technology is the cutting-edge physical security solution to secure, control and audit assets.

Our powerful VAX Access Control solution, designed for ease-of-use and flexibility, combines intuitive user interface software with versatile hardware, delivering absolute control and real-time views from any web-browser device. It provides centralized monitoring and management of access to doors, elevators and other protected spaces located throughout facilities of any size, including multi-site installations.

Why Choose VAX?

Vicon simplifies the Access Control experience with a highly secure, centralized solution that's easy to install, operate, maintain and expand.

Interactive Maps

Whether a single map or complex multi-building or multi-floor solution is required, interactive maps can scale to any need.

- ▶ Complex maps are created in minutes
- ▶ Real-time status of doors, floors, inputs and outputs
- ▶ Support for easy navigation between buildings, floors and areas; support for multiple map tabs
- ▶ View live and historical video with one click

Action Control Engine

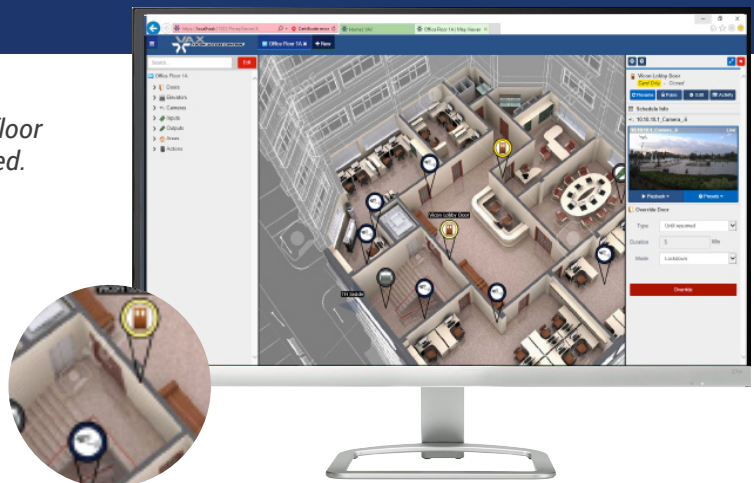
Allows for global linking in your access control system. Users can create complex action plans in minutes.

VAX/EasyLobby® Visitor Management

- ▶ Quickly create access credentials for daily visitors
- ▶ Log visitor information and keep track of actions
- ▶ Grant or deny access to recurring visitors

Modern/Flexible HTML5 Interface

HTML5 rich media support means that VAX web content is accessible and formatted automatically for any mobile device, such as smartphones or tablets.



Interactive Maps

Clicking an icon for a door, elevator, input, or output allows you to see the real-time state of that object, associated video, and gives you override control.

VAX Product Details

VAX Software



- ▶ Smart and responsive web-based software
- ▶ Integrated video from Valerus VMS
- ▶ Fully distributed architecture
- ▶ Absolute control to manage your facility from any device
- ▶ 256 schedules (*holidays and others*)
- ▶ 40, 80, 120, 240 or unlimited door licenses
- ▶ 1 or 5 year license

VAX Door Controllers

VAX-1D, VAX-1D-REX,
VAX-2D, VAX-2D-REX,
VAX 2, 4, 6, 8 Door Kits



- ▶ Unique optional over-the-door design with built-in 'Request to Exit' passive infrared (PIR) sensor
- ▶ 2, 4, 6, 8-controller packages aid in centrally installed systems
- ▶ One- and two-door models
- ▶ Powered by PoE, including door hardware
- ▶ Built-in diagnostics interface
- ▶ Compatible with standard reader hardware

VAX-PC-A/VAX-PC-A-RK Servers

- ▶ Certified and preloaded with VAX software
- ▶ Configured with the customer's VAX software license
- ▶ Desk-top or rack-mount models



VAX-LRR2/LRR4 Long-Range Receiver

- ▶ 100 ft/200 ft (30.5 m/61 m) long-range receiver
- ▶ Interfaces with VAX via Wiegand communications protocol
- ▶ Output transmitter data over four separate Wiegand outputs to a proximity reader



VAX-ELV-STR Elevator Controller

- ▶ Elevator master controller
- ▶ Controls up to 8 floors
- ▶ Expandable up to 64 floors
- ▶ Powered by PoE



VAX-LRT2 and VAX-LRT4 Long-Range Transmitters

- ▶ Two- and four-button long-range transmitters
- ▶ Works with VAX-LRR2 and VAX-LRR4 long-range receivers
- ▶ Supports VAX proximity reader technology



VAX-IO-STR I/O Controller

- ▶ Input/output master controller
- ▶ Controls up to 8 inputs/outputs
- ▶ Expandable up to 64 I/Os
- ▶ Powered by PoE



VAX-CRD-SD Proximity Card

- ▶ 125 kHz proximity card
- ▶ Interfaces with VAX via Wiegand communications
- ▶ Clamshell card



VAX-300R Proximity Reader

- ▶ 125 kHz proximity reader
- ▶ Interfaces with VAX via Wiegand communications protocol
- ▶ Designed to be mounted to metal door and window frames (mullion); available in black or beige



VAX-CRD-MT Proximity Card

- ▶ 125 kHz proximity card
- ▶ Interfaces with VAX via Wiegand communications
- ▶ ISO style; technology for dye sublimation imaging



VAX-500R Proximity Reader

- ▶ 125 kHz proximity reader
- ▶ Interfaces with VAX via Wiegand communications protocol
- ▶ Designed to be mounted to standard single gang box wall switch; available in black or beige



VAX-PRX-TAG Proximity Fob

- ▶ 125 kHz small proximity tag
- ▶ Designed to be carried on a key ring
- ▶ Interfaces with VAX via Wiegand communications





Network Cameras

**H.265 Encoding • Supports Museum Search • Smart Encoding • Extended Range WDR
Video Content Analysis (VCA) • Extreme Low Light Sensitivity • HTTPS Encryption**

Best Seller



V940D Outdoor Vandal Dome

V942D-W312MIR, V942D-W310MIR-XS,
V942D-W310MIR-XW, V944D-W312MIR,
V945D-W310MIR

- ▶ H.264/H.265 compression
- ▶ 2 MP, 4 MP, 5 MP; high-sensitivity (XS), high-WDR (XW) models
- ▶ True WDR
- ▶ Smart Encoding
- ▶ Smart IR Illumination
- ▶ IP66; IK16
- ▶ MFZ lenses

Best Seller



V940B Outdoor Bullet

V942B-W312MIR, V942B-W310MIR-XS,
V942B-W310MIR-XW, V944B-W312MIR,
V945B-W310MIR

- ▶ H.264/H.265 compression
- ▶ 2 MP, 4 MP, 5 MP; high-sensitivity (XS), high-WDR (XW) models
- ▶ True WDR
- ▶ Smart Encoding
- ▶ Smart IR Illumination
- ▶ IP66; IK16
- ▶ MFZ lenses

Best Seller



V9360 Hemispheric

V9360-6, V9360W-6, V9360-12, V9360W-12

- ▶ 6MP and 12 MP
- ▶ Indoor and outdoor models; IK10/IP66
- ▶ IR Illumination
- ▶ 360° panorama at full HD resolution
- ▶ WDR
- ▶ Selectable H.264 and M-JPEG compressions with quad streaming
- ▶ Server or edge-based dewarping
- ▶ Smart Event function

Camera Solutions for Every Purpose, in Any Environment



V930D/V9500D Outdoor Turret

V932D-IR-1, V9520D-312MIR,
V934D-IR, V9540D-312MIR

- ▶ H.264/H.265 compression
- ▶ Museum Search
- ▶ Smart Encoding
- ▶ WDR
- ▶ IR Illumination
- ▶ Fixed and MFZ lenses
- ▶ Easy to install and adjust lens
- ▶ IP66



V933EZ-312MIR Outdoor Turret

- ▶ H.264 compression
- ▶ 3 MP
- ▶ Remote motorized pan/tilt controls
- ▶ MFZ lens
- ▶ WDR
- ▶ IR Illumination
- ▶ IP66/IK10



V800D Indoor Dome

V802D-WIR, V802D-W312MIR,
V804D-WIR, V804D-W312MIR

- ▶ H.264/H.265 compression
- ▶ 2 MP, 4 MP
- ▶ True WDR
- ▶ Smart Encoding
- ▶ IR Illumination
- ▶ Fixed and MFZ lenses
- ▶ Quad Streaming



Network Cameras

Network cameras enable high-resolution video to be viewed via network or the Internet. Vicon offers a variety of network cameras designed for indoor, outdoor and specialized use.



V810B Outdoor Bullet

V812B-IR, V812B-312MIR,
V814B-IR, V814B-312MIR

- ▶ H.264/H.265 compression
- ▶ 2 MP, 4 MP
- ▶ Smart Encoding
- ▶ WDR
- ▶ IR Illumination
- ▶ Fixed and MFZ lenses
- ▶ IP66



V-CELL-HD-A for Prisons

- ▶ High-security 1080p resolution
- ▶ Ideal for custodial suites and prisons
- ▶ Integrated housing, camera, lens and IR illuminators
- ▶ Rugged housing with flat design
- ▶ Day/night with 2.6mm fixed lens
- ▶ IK10 impact rating
- ▶ H264, MPEG-4 and M-JPEG compression



Cruiser SN673V-B PTZ Dome

- ▶ 1080p (1920x1080)
- ▶ Day/night
- ▶ True WDR (120dB)
- ▶ 20x optical/16x digital zoom
- ▶ H.264 and M-JPEG compression
- ▶ On-camera storage
- ▶ Outdoor IP66

Vicon's new camera line includes models appropriate for every market.



SN680D-B Rugged PTZ Dome

- ▶ 1080p resolution
- ▶ True WDR (120dB); day/night
- ▶ 30x optical/16x digital zoom lens
- ▶ IR LED range up to 1312 ft/400 m
- ▶ Outdoor; IP66



Surveyor MKII PTZ Dome

SN230W, SN230M, SN230P

- ▶ 1080p (2MP)
- ▶ Outdoor, impact-resistant and pressurized models
- ▶ 30x optical zoom
- ▶ WDR
- ▶ Electronic image stabilization
- ▶ Tours and presets



Explosionproof Series

VZX-SS30-HD, VZX-SS36-A, VX-SS10-HD

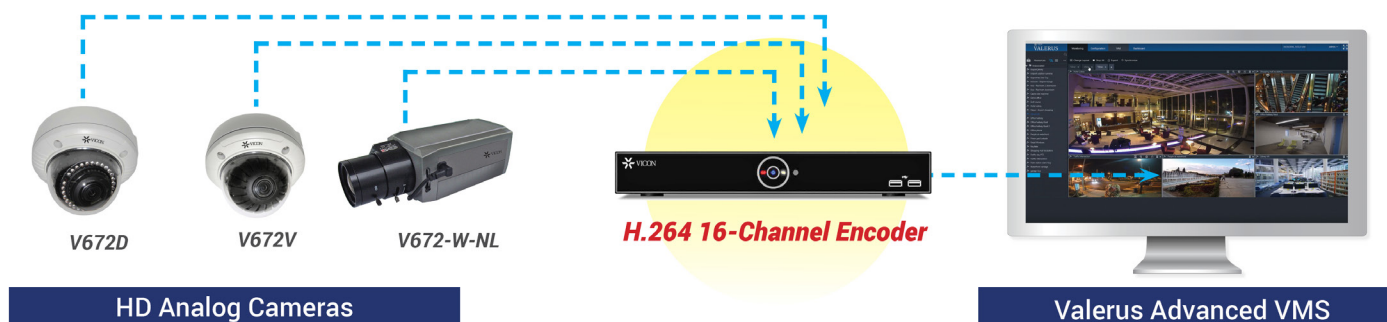
- ▶ Integral camera
- ▶ HD 1080p or 36x analog camera
- ▶ PTZ or fixed models
- ▶ AISI 316L electropolished stainless steel
- ▶ Integrated wiper
- ▶ Meets numerous certifications for harsh environments



HD Analog

**Supports AHD/TVI/CVBS • True WDR • On-screen setup • 2MP (AHD/TVI)/700 TVI (CVBS) resolution
Privacy Masking • Motion Detection • Accepts UTC protocol**

Our HD analog cameras deliver high-definition video in a conventional coaxial cabling environment at an affordable value. Removing traditional analog resolution limitations by delivering HD video quality in an existing analog infrastructure. No new cabling is required when upgrading existing analog systems to high definition when you are using HD analog technology.



The 16-channel ENC-H264-16 encoder can simplify migration to network video without completely upgrading existing analog camera systems. By upgrading to an IP-based system with the encoder, customers gain increased flexibility in camera management while utilizing existing cameras and cabling.

HD Analog Cameras



**V672-W-NL
Box**

- ▶ 2 MP
- ▶ Supports AHD/TVI/CVBS
- ▶ True WDR
- ▶ C/CS mount
- ▶ Autoiris connector



**V672V-W312WIR
Vandal Dome**

- ▶ Vandal-proof
- ▶ 2 MP
- ▶ Supports AHD/TVI/CVBS
- ▶ True WDR
- ▶ 2.8-12 mm motorized varifocal lens
- ▶ IR illuminators
- ▶ IP66/IK10



**V672D-W312MIR
Outdoor Dome**

- ▶ Outdoor
- ▶ 2 MP
- ▶ Supports AHD/TVI/CVBS
- ▶ True WDR
- ▶ 2.8-12 mm motorized varifocal lens
- ▶ IR illuminators
- ▶ IP66/IK10



**V672B-W312MIR
Outdoor Bullet**

- ▶ 2 MP
- ▶ Supports AHD/TVI/CVBS
- ▶ True WDR
- ▶ 2.8-12 mm motorized varifocal lens
- ▶ IR illuminators
- ▶ IP66/IK10



Camera Accessories

Vicon offers a variety of accessories to ensure more efficient installation and maintenance.



Monitors

- ▶ 21.5, 23, 32 and 42-inch models
- ▶ Convenient front panel and OSD controls
- ▶ HDMI and DVI inputs
- ▶ Resolution up to 1920 x 1080
- ▶ Desk or wall (VESA) mounting; rack-mount option

Transmission

- ▶ Fiber-optic media converters for range extension
- ▶ Fiber-optic and twisted-pair transmission systems for video/data



Surge Protection

- ▶ Use at camera site or individual NVR/power supply feed
- ▶ RJ-45 connection protects all four video/data pairs
- ▶ Automatically resets to protect against multiple surges



Network Switches

- ▶ 8-channel customized operation using intuitive web interface
- ▶ LAN connections with PoE+



8-channel network switch



24-channel network switch

- ▶ 24-channel network switch; LAN connections with PoE
- ▶ Maximum power 180W; up to 15.4W max. per port

Camera Accessories

- ▶ Extensive selection of indoor and outdoor mounting hardware
- ▶ Varifocal lenses, including IR and megapixel
- ▶ Power supplies including PoE Backup UPS



HD Analog Encoder



16-channel encoder • Supports AHD/TVI/CVBS video • Supports dual streaming H.264 compression • 4 alarm inputs; 1 alarm output • Compatible with Valerus VMS

Our 16-channel **ENC-H264-16 ONVIF** video encoder converts analog video feed into a digital stream, that allows sending the captured digital images over an IP network. The live images can then be viewed on an IP network using video management software and IP-based cameras can be added as budget allows.



Vicon offers A&E Support, Training and Professional Services

A&E Support Services

Vicon makes it easy for architects, engineers and consultants who design and specify IP surveillance systems. Our A&E program provides user-friendly specifications, as well as helpful design tools and documentation to make designing your project easier and more efficient.

Training Classes

Vicon offers VMS and VAX training classes domestically and internationally. There are also online tutorials and a number of calculator tools that make it easy to determine specifications for storage, bandwidth and camera settings.

Professional Services Provide Peace of Mind

With our professional services, new solutions require less time and cost to implement, communication is streamlined, and access to service and resources is easier:

Factory Direct System Pre-Configuration

All system components, including pre-registration of software licenses, are pre-configured.

On-Site Training

Customized, hands-on training.

Field Services and Project Engineering

Single point-of-contact engineers work onsite and provide on-going communication.

Where to Buy

Americas and Canada

Vicon Industries – Corporate Headquarters

USA
Tel: +1 (631) 952-2288
Toll-free sales: +1 (800) 645-9116
Toll-free technical support:
+1 (800) 348 4266/34 VICON
Fax: +1 (631) 951-2288

Europe

Tel: +44 1489 566300
Fax: +44 1489 566322
Sales: +44 1489 566310
Technical support: +44 1489 566330

Latin America

Tel: +1 (631) 952-2288, Ext. 435
Tel: +52 55 8525 4402

Middle East

Direct: +971 (0) 4 2784716
Reception: +971 (0) 4 2784700
Fax: +971 (0) 4 2784730

Asia-Pacific

**Asia-Pacific, including Australia
and New Zealand**
Mobile: +65 9852 4515

Africa

Western Africa

Tel: +1 (631) 952-2288, Ext. 435

For customers in the rest of Africa, please contact our EMEA headquarters:

Tel: +44 1489 566300
Fax: +44 1489 566322
Sales: +44 1489 566310
Technical Support: +44 1489 566330



Vicon, Valerus, Roughneck, VAX, Surveyor and their logos are registered trademarks of Vicon Industries, Inc. Product specifications are subject to change without notice. Copyright ©2018 Vicon Industries Inc. All rights reserved. Vicon part number 8015-5329-13. All other trademarks used in this publication are the property of their owners.

