



VistA Blood Establishment Computer Software (VBECS) 2.3.2 Rev D

Release Notes Version 1.0

Department of Veterans Affairs
Enterprise Project Management Office

This page intentionally left blank.

Revision History

Date	Revision	Description	Author
04/17/20	1.0	VBECS 2.3.2 Rev D Initial version	BBM Team

This page intentionally left blank.

Table of Contents

REVISION HISTORY	I
INTRODUCTION.....	1
CHANGED FEATURES AND FUNCTIONS.....	1
UNTESTABLE SYSTEM-LEVEL CORRECTED CODE REQUESTS.....	1
VISTA SOFTWARE DEPENDENCIES	1
VBECS USER DOCUMENTS.....	2
CUSTOMER SUPPORT	4
PROBLEMS?.....	4
REFERENCES	4
VBECS SHAREPOINT SITE	4
INSTALLATION QUALIFICATION (IQ) DOCUMENTATION.....	4
VALIDATION PLANNING	6
TABLE 1: UPDATES BY OPTION.....	7
TABLE 2: NEW BLOOD PRODUCTS FOR COVID-19 TREATMENT	8
TABLE 3: POSSIBLE MODIFICATIONS FOR NEWLY ADDED PRODUCTS	10

This page intentionally left blank.

Introduction

VistA Blood Establishment Computer Software (VBECS) 2.3.2 Rev D Release Notes contains information for changes and corrections made to VBECS in the 2.3.2 Rev D patch.

Perform a local evaluation and risk assessment of the changes to determine the requirements for local validation of the changes, including documentation of the assessment activities. See *Validation Planning*.

Changed Features and Functions

This revision letter patch release is centrally focused around providing additional blood product updates released from International Council for Commonality in Blood Banking Automation, Inc. (ICCBBA) for the treatment of COVID-19. Blood products contained in ICCBBA releases 7.35.2, 7.35.3 and 7.35.4 are included. In addition, the text for the donation types of 2, L, E, and 3 is being updated to indicate directed recipient rather than directed donor.

Table 1: Updates by Option provides complete lists of included changes.

For a full list of new product codes see tables 2 and 3.

Untestable System-Level Corrected Code Requests

- None

VistA Software Dependencies

- No VistA patch is required for this blood product-only release.

VBECS User Documents

The following is a list of all the VBECS user documents that apply to the VBECS 2.3.2 Rev D patch release. The **Updated** column identifies the documents that have been updated with this VBECS 2.3.2 Rev D revision letter patch release.

These user documents are available from the VA Software Document Library (VDL) at <https://www.va.gov/vdl/application.asp?appid=182>.

User Document	Version	Updated
<i>VistA Blood Establishment Computer Software (VBECS) 2.3.2 User Guide</i>	4.0	No
<i>VistA Blood Establishment Computer Software (VBECS) 2.3.2 Administrator User Guide</i>	3.0	No
<i>VistA Blood Establishment Computer Software (VBECS) 2.3.2 Known Defects and Anomalies</i>	3.0	No
<i>VistA Blood Establishment Computer Software (VBECS) 2.3.2 Technical Manual-Security Guide</i>	1.0	No
<i>VistA Blood Establishment Computer Software (VBECS) - Echo Interface Configuration and Setup Guide</i>	5.0	No
<i>VistA Blood Establishment Computer Software (VBECS) - Erytra Interface Configuration and Setup Guide</i>	2.0	No
<i>VistA Blood Establishment Computer Software (VBECS) - ProVue Interface Configuration and Setup Guide</i>	5.0	No
<i>VistA Blood Establishment Computer Software (VBECS) - Vision Interface Configuration and Setup Guide</i>	4.0	No

The following is a list of all the VBECS FAQ documents that apply to the VBECS 2.3.2 Rev D patch release. The **Updated** column identifies the documents that have been updated with this VBECS 2.3.2 Rev D revision letter patch release.

These FAQ documents are available from the VA SharePoint site at **REDACTED**

FAQ Document	Version	Updated
<i>FAQ ABO subgroup Interpretations</i>	11/22/16	No
<i>FAQ Ancillary VistA Validation</i>	11/28/17	No
<i>FAQ Antibodies with No Antigen Negative Requirement</i>	10/15/14	No
<i>FAQ Blood Product Table Processes</i>	03/28/19	No
<i>FAQ CAP Comprehensive Transfusions Medicine Crossmatch Survey</i>	11/22/16	No
<i>FAQ Compound Antibodies</i>	02/27/13	No
<i>FAQ CPRS VBECS Order Details</i>	04/01/09	No
<i>FAQ Database Conversion Oddballs</i>	09/15/09	No
<i>FAQ Documenting Unhandled Exceptions</i>	05/21/07	No
<i>FAQ Handling ABO Incompatible Transfusion Situations</i>	09/23/14	No
<i>FAQ How to File a New Service Request for Changes to VBECS</i>	12/08/16	No
<i>FAQ How to take faster screen shots from Remote Desktop Session</i>	12/17/14	No
<i>FAQ Identifying a Comparable Blood Product Code</i>	03/28/19	No
<i>FAQ Local Facilities</i>	12/27/19	No
<i>FAQ Modification Target Not Available</i>	11/28/17	No
<i>FAQ Multidivisional QC Rack Workaround</i>	11/28/17	No
<i>FAQ Order Status Clarification</i>	11/15/17	No
<i>FAQ Polyspecific AHG Not Used for Testing</i>	01/29/10	No
<i>FAQ Proper Use of PIV Card with VBECS</i>	11/04/19	No
<i>FAQ QC Setup</i>	01/29/10	No
<i>FAQ Retesting QC</i>	11/01/11	No
<i>FAQ Retrieving an Expired Order</i>	12/07/17	No
<i>FAQ The Difference Between Transfusion Only and Full Service Facility Types</i>	02/08/10	No
<i>FAQ VBECS Blood Product Hierarchy</i>	03/28/19	No
<i>FAQ VBECS Computer Crossmatch Decision Tree</i>	02/08/12	No
<i>FAQ Weak D Policy</i>	01/11/10	No

Customer Support

Problems?

Contact your Local Office of Information Technology (OIT) or Laboratory Information Manager (LIM) if you encounter VistA or CPRS connection problems and for training support **before** contacting the Service Desk (SD).

- Please ensure local contact information is available at all times. SD support will engage Enterprise Operations (EO) personnel as needed.
- Problems with connectivity to VistA and CPRS may require personnel from EO with VBECS server administrator access and VistA IT support access.
- If you experience a Food and Drug Administration (FDA) reportable adverse event (patient death or serious injury) that VBECS may have caused or contributed to, contact the Service Desk directly to enter a ticket for Blood Bank software support.

If the problem remains unresolved after local VistA triage, call the Service Desk (below) and specify the Enterprise Application be set as VistA Blood Establishment Computer Software. This will cause the Assignment group to default to NTL Alert Blood Bank & VBECS, which alerts the Clin2 team.

Service Desk Contact

REDACTEDReferences

- *ISBT128 Standard Technical Specification v 5.10.0*
- *Blood Product Revisions ICCBBA Version 7.35.4, April 15th 2020*

VBECS SharePoint Site

The VBECS SharePoint site provides a location for additional information related to the VBECS application such as FAQs, installation status, and release history.

REDACTED.

Installation Qualification (IQ) Documentation

The expedited patch installation process will continue with the installation of VBECS 2.3.2 Rev D.

Test Account Upgrade to VBECS 2.3.2 Revision D	
Required Patch Installation	VistA Patch: N/A Server Patch: VBECS 2.3.2 Revision D
Installation Process for VBECS 2.3.2 Rev D	Installed by the BBM team, all sites will be installed in one day. The date of installation will be communicated through a ListServ announcement.
Expected Downtime	None
Installation Communication for VBECS 2.3.2 Rev D	The planned completion time for all test installs will be provided on the VBECS SharePoint site.
Site Responsibility	<ul style="list-style-type: none">• Join VBECS-L message board on ListServ, if needed.• Please communicate any changes to your site supervisor and Point of Contact (POC) since the last patch install to the BBM team to the email group "VA OIT BBM Team".

Site Record of Patch Installation	Sites should take and save a screenshot of the VBECS Help, About window after the Test installation is performed. This displays the VBECS updated version information.
-----------------------------------	--

Production Account Upgrade to VBECS 2.3.2 Revision D	
Required Patch Installation	VistA Patch: N/A Server Patch: VBECS 2.3.2 Revision D
Installation Process for VBECS 2.3.2 Rev D	Installed by the BBM team, all sites will be installed in one day. The date of installation will be communicated through a ListServ announcement.
Expected Downtime	You will be able to use VBECS during the patch installation. VBECS installation on your production account only lasts a few minutes and is invisible to users. If you encounter any disruption or errors while viewing or printing reports during the installation, try again after a few minutes.
Installation Communication for VBECS 2.3.2 Rev D	The status of production installs will be provided on the VBECS SharePoint site.
Site Responsibility	<ul style="list-style-type: none"> • Perform local validation, training, and set-up requirements prior to Production installation. • Join VBECS-L message board on ListServ, if needed. • Please communicate any changes to your site supervisor and Point of Contact (POC) since the last patch install to the BBM team to the email group “VA OIT BBM Team”.
Site Record of Patch Installation	Sites should take and save a screenshot of the VBECS Help, About window after Production installation is performed. This displays the VBECS updated version information.

Validation Planning

The following is a flowchart to help assess changes for validation planning.

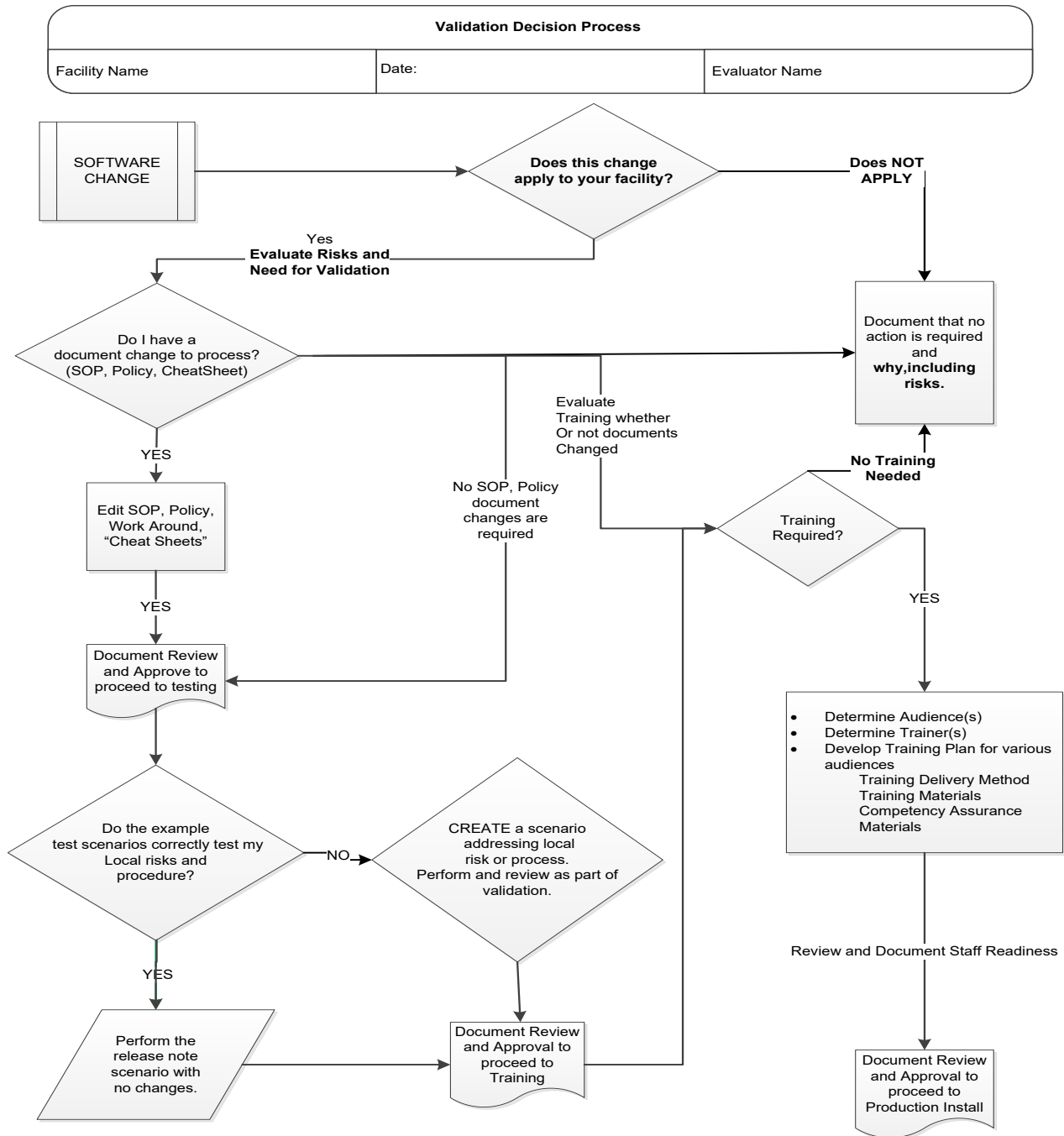


Table 1: Updates by Option

ID	Option	Problem Summary	Change Summary	Validation Scenario	Change applies to my facility. (Y/N)	Local risk Assessment (Low, Med, High)	SOP revision required. If yes, identify it.	Staff training needed. (Y/N)	Scenarios or validation must be performed. (Y/N)
1	Blood Products	Update blood product table with new ICCBBA blood product codes from version 7.35.2 through 7.35.4 with a primary focus on the convalescent plasma products used for treatment of COVID-19.	New blood products were added to VBECS. For a full list of new product codes for COVID-19 treatment, see Table 2 . For possible modifications for new blood products see Table 3 .	Validate only blood products that you may receive from your supplier. Use Tools, Blood Products to associate the blood products with an active facility.					
2	Donation Types	Update text of the following donation types to indicate directed recipient rather than directed donor: 2 - "For Directed Donor Use Only" L - "For Directed Donor Use Only, Limited Exposure" E - "For Directed Donor Use Only, Medical Exception" 3 - "For Directed Donor Use Only, Biohazardous"	New text of donation types: 2 - "For Directed Recipient Use Only" L - "For Directed Recipient Use Only, Limited Exposure" E - "Medical Exception, for Specified Recipient Only" 3 - "For Directed Recipient Use Only, Biohazardous"	No validation required.					

Table 2: New Blood Products for COVID-19 Treatment

Component	Product Code	Modifiable	Product Type	Long Name	Short Name	Maximum Storage Hours
FRESH FROZEN PLASMA	E9784	Yes	Apheresis CONVALESCENT PLASMA	Apheresis CONVALESCENT PLASMA ACD-A/XX/<=-18C 1st container Psoralen-treated COVID-19	PLASMA AFR Conv ACD-A 1C Psoraln COVID-19	8760
FRESH FROZEN PLASMA	E9785	Yes	Apheresis CONVALESCENT PLASMA	Apheresis CONVALESCENT PLASMA ACD-A/XX/<=-18C 2nd container Psoralen-treated COVID-19	PLASMA AFR Conv ACD-A 2C Psoraln COVID-19	8760
FRESH FROZEN PLASMA	E9786	Yes	Apheresis CONVALESCENT PLASMA	Apheresis CONVALESCENT PLASMA ACD-A/XX/<=-18C 3rd container Psoralen-treated COVID-19	PLASMA AFR Conv ACD-A 3C Psoraln COVID-19	8760
FRESH FROZEN PLASMA	E9787	Yes	Apheresis CONVALESCENT PLASMA	Apheresis CONVALESCENT PLASMA ACD-A/XX/<=-18C 4th container Psoralen-treated COVID-19	PLASMA AFR Conv ACD-A 4C Psoraln COVID-19	8760
FRESH FROZEN PLASMA	E9788	Yes	Thawed Apheresis CONVALESCENT PLASMA	Thawed Apheresis CONVALESCENT PLASMA ACD-A/XX/refg Psoralen-treated COVID-19	PLASMA Conv AFR Thaw ACD-A Psoraln COVID-19	120
FRESH FROZEN PLASMA	E9789	Yes	Thawed Apheresis CONVALESCENT PLASMA	Thawed Apheresis CONVALESCENT PLASMA ACD-A/XX/refg 1st container Psoralen-treated COVID-19	PLASMA Conv AFR Thaw ACD-A 1C Psoraln COVID-19	120
FRESH FROZEN PLASMA	E9790	Yes	Thawed Apheresis CONVALESCENT PLASMA	Thawed Apheresis CONVALESCENT PLASMA ACD-A/XX/refg 2nd container Psoralen-treated COVID-19	PLASMA Conv AFR Thaw ACD-A 2C Psoraln COVID-19	120
FRESH FROZEN PLASMA	E9791	Yes	Thawed Apheresis CONVALESCENT PLASMA	Thawed Apheresis CONVALESCENT PLASMA ACD-A/XX/refg 3rd container Psoralen-treated COVID-19	PLASMA Conv AFR Thaw ACD-A 3C Psoraln COVID-19	120
FRESH FROZEN PLASMA	E9792	Yes	Thawed Apheresis CONVALESCENT PLASMA	Thawed Apheresis CONVALESCENT PLASMA ACD-A/XX/refg 4th container Psoralen-treated COVID-19	PLASMA Conv AFR Thaw ACD-A 4C Psoraln COVID-19	120
FRESH FROZEN PLASMA	E9793	Yes	Thawed Apheresis CONVALESCENT PLASMA	Thawed Apheresis CONVALESCENT PLASMA ACD-A/XX/refg Irradiated COVID-19	PLASMA Conv AFR Thaw ACD-A IRD COVID-19	120
FRESH FROZEN PLASMA	E9794	Yes	CONVALESCENT PLASMA	CONVALESCENT PLASMA CPD/XX/<=-25C COVID-19	PLASMA Conv CPD COVID-19	8760
FRESH FROZEN PLASMA	E9795	Yes	Apheresis CONVALESCENT PLASMA	Apheresis CONVALESCENT PLASMA NaCitrate/XX/<=-25C COVID-19	PLASMA AFR Conv NaCit COVID-19	8760
FRESH FROZEN PLASMA	E9796	Yes	Liquid CONVALESCENT PLASMA	Liquid CONVALESCENT PLASMA NS/XX/refg Irradiated COVID-19	PLASMA Conv Liq NS IRD COVID-19	624
FRESH FROZEN PLASMA	E9797	Yes	Liquid Apheresis CONVALESCENT PLASMA	Liquid Apheresis CONVALESCENT PLASMA NS/XX/refg Irradiated COVID-19	PLASMA Conv AFR Liq NS IRD COVID-19	120

Component	Product Code	Modifiable	Product Type	Long Name	Short Name	Maximum Storage Hours
FRESH FROZEN PLASMA	E9798	Yes	Liquid Apheresis CONVALESCENT PLASMA	Liquid Apheresis CONVALESCENT PLASMA ACD-A/XX/refg Irradiated COVID-19	PLASMA Conv AFR Liq ACD-A IRD COVID-19	120
FRESH FROZEN PLASMA	E9799	Yes	Liquid CONVALESCENT PLASMA	Liquid CONVALESCENT PLASMA CPD/XX/refg Irradiated COVID-19	PLASMA Conv Liq CPD IRD COVID-19	624
FRESH FROZEN PLASMA	E9800	Yes	Liquid Apheresis CONVALESCENT PLASMA	Liquid Apheresis CONVALESCENT PLASMA CPD/XX/refg Irradiated COVID-19	PLASMA Conv AFR Liq CPD IRD COVID-19	120
FRESH FROZEN PLASMA	E9801	Yes	CONVALESCENT PLASMA	CONVALESCENT PLASMA CPD/XX/<=-18C Irradiated COVID-19	PLASMA Conv CPD IRD COVID-19	8760
FRESH FROZEN PLASMA	E9802	Yes	CONVALESCENT PLASMA	CONVALESCENT PLASMA CP2D/XX/<=-18C COVID-19	PLASMA Conv CP2D COVID-19	8760
FRESH FROZEN PLASMA	E9803	Yes	Thawed CONVALESCENT PLASMA	Thawed CONVALESCENT PLASMA CP2D/XX/refg COVID-19	PLASMA Conv Thaw CP2D COVID-19	120
FRESH FROZEN PLASMA	E9804	Yes	CONVALESCENT PLASMA	CONVALESCENT PLASMA CPDA-1/XX/<=-18C COVID-19	PLASMA Conv CPDA-1 COVID-19	8760
FRESH FROZEN PLASMA	E9805	Yes	CONVALESCENT PLASMA	CONVALESCENT PLASMA CPDA-1/XX/<=-18C Psoralen-treated COVID-19	PLASMA Conv CPDA-1 Psoraln COVID-19	8760
FRESH FROZEN PLASMA	E9806	Yes	Liquid Apheresis CONVALESCENT PLASMA	Liquid Apheresis CONVALESCENT PLASMA NS/XX/refg Irradiated 1st container COVID-19	PLASMA Conv AFR Liq NS IRD 1C COVID-19	120
FRESH FROZEN PLASMA	E9807	Yes	Liquid Apheresis CONVALESCENT PLASMA	Liquid Apheresis CONVALESCENT PLASMA NS/XX/refg Irradiated 2nd container COVID-19	PLASMA Conv AFR Liq NS IRD 2C COVID-19	120
FRESH FROZEN PLASMA	E9808	Yes	Liquid Apheresis CONVALESCENT PLASMA	Liquid Apheresis CONVALESCENT PLASMA NS/XX/refg Irradiated 3rd container COVID-19	PLASMA Conv AFR Liq NS IRD 3C COVID-19	120
FRESH FROZEN PLASMA	E9809	Yes	Liquid Apheresis CONVALESCENT PLASMA	Liquid Apheresis CONVALESCENT PLASMA NS/XX/refg Irradiated 4th container COVID-19	PLASMA Conv AFR Liq NS IRD 4C COVID-19	120
FRESH FROZEN PLASMA	E9810	Yes	Liquid CONVALESCENT PLASMA	Liquid CONVALESCENT PLASMA CPDA-1/XX/refg COVID-19	PLASMA Conv Liq CPDA-1 COVID-19	624
FRESH FROZEN PLASMA	E9811	Yes	Thawed CONVALESCENT PLASMA	Thawed CONVALESCENT PLASMA CPDA-1/XX/refg COVID-19	PLASMA Conv Thaw CPDA-1 COVID-19	120

Table 3: Possible Modifications for Newly Added Products

Modification	Method	Source Product Code	Source Product Name	Target Product Code	Target Product Name
Thaw	CLOSED	E9753	Apheresis CONVALESCENT PLASMA ACD-A/XX/<=18C Irradiated COVID-19	E9793	Thawed Apheresis CONVALESCENT PLASMA ACD-A/XX/refg Irradiated COVID-19
Thaw	CLOSED	E9771	Apheresis CONVALESCENT PLASMA ACD-A/XX/<=18C Psoralen-treated COVID-19	E9788	Thawed Apheresis CONVALESCENT PLASMA ACD-A/XX/refg Psoralen-treated COVID-19
Thaw	CLOSED	E9784	Apheresis CONVALESCENT PLASMA ACD-A/XX/<=18C 1st container Psoralen-treated COVID-19	E9789	Thawed Apheresis CONVALESCENT PLASMA ACD-A/XX/refg 1st container Psoralen-treated COVID-19
Thaw	CLOSED	E9785	Apheresis CONVALESCENT PLASMA ACD-A/XX/<=18C 2nd container Psoralen-treated COVID-19	E9790	Thawed Apheresis CONVALESCENT PLASMA ACD-A/XX/refg 2nd container Psoralen-treated COVID-19
Thaw	CLOSED	E9786	Apheresis CONVALESCENT PLASMA ACD-A/XX/<=18C 3rd container Psoralen-treated COVID-19	E9791	Thawed Apheresis CONVALESCENT PLASMA ACD-A/XX/refg 3rd container Psoralen-treated COVID-19
Thaw	CLOSED	E9787	Apheresis CONVALESCENT PLASMA ACD-A/XX/<=18C 4th container Psoralen-treated COVID-19	E9792	Thawed Apheresis CONVALESCENT PLASMA ACD-A/XX/refg 4th container Psoralen-treated COVID-19
Thaw	CLOSED	E9794	CONVALESCENT PLASMA CPD/XX/<=25C COVID-19	E9780	Thawed CONVALESCENT PLASMA CPD/XX/refg COVID-19
Thaw	CLOSED	E9795	Apheresis CONVALESCENT PLASMA NaCitrate/XX/<=25C COVID-19	E9782	Thawed Apheresis CONVALESCENT PLASMA NS/XX/refg COVID-19
Thaw	CLOSED	E9802	CONVALESCENT PLASMA CP2D/XX/<=18C COVID-19	E9803	Thawed CONVALESCENT PLASMA CP2D/XX/refg COVID-19
Thaw	CLOSED	E9804	CONVALESCENT PLASMA CPDA-1/XX/<=18C COVID-19	E9811	Thawed CONVALESCENT PLASMA CPDA-1/XX/refg COVID-19
Irradiate	CLOSED	E9738	Liquid CONVALESCENT PLASMA CPD/XX/refg COVID-19	E9799	Liquid CONVALESCENT PLASMA CPD/XX/refg Irradiated COVID-19
Irradiate	CLOSED	E9739	Liquid Apheresis CONVALESCENT PLASMA CPD/XX/refg COVID-19	E9800	Liquid Apheresis CONVALESCENT PLASMA CPD/XX/refg Irradiated COVID-19
Irradiate	CLOSED	E9750	Liquid Apheresis CONVALESCENT PLASMA NS/XX/refg COVID-19	E9797	Liquid Apheresis CONVALESCENT PLASMA NS/XX/refg Irradiated COVID-19
Irradiate	CLOSED	E9751	Liquid CONVALESCENT PLASMA NS/XX/refg COVID-19	E9796	Liquid CONVALESCENT PLASMA NS/XX/refg Irradiated COVID-19
Irradiate	CLOSED	E9752	Thawed Apheresis CONVALESCENT PLASMA ACD-A/XX/refg COVID-19	E9793	Thawed Apheresis CONVALESCENT PLASMA ACD-A/XX/refg Irradiated COVID-19
Irradiate	CLOSED	E9758	Liquid Apheresis CONVALESCENT PLASMA NS/XX/refg 1st container COVID-19	E9806	Liquid Apheresis CONVALESCENT PLASMA NS/XX/refg Irradiated 1st container COVID-19
Irradiate	CLOSED	E9759	Liquid Apheresis CONVALESCENT PLASMA NS/XX/refg 2nd container COVID-19	E9807	Liquid Apheresis CONVALESCENT PLASMA NS/XX/refg Irradiated 2nd container COVID-19
Irradiate	CLOSED	E9760	Liquid Apheresis CONVALESCENT PLASMA NS/XX/refg 3rd container COVID-19	E9808	Liquid Apheresis CONVALESCENT PLASMA NS/XX/refg Irradiated 3rd container COVID-19
Irradiate	CLOSED	E9761	Liquid Apheresis CONVALESCENT PLASMA NS/XX/refg 4th container COVID-19	E9809	Liquid Apheresis CONVALESCENT PLASMA NS/XX/refg Irradiated 4th container COVID-19
Irradiate	CLOSED	E9773	Liquid Apheresis CONVALESCENT PLASMA ACD-A/XX/refg COVID-19	E9798	Liquid Apheresis CONVALESCENT PLASMA ACD-A/XX/refg Irradiated COVID-19
Split/Divide	CLOSED	E9788	Thawed Apheresis CONVALESCENT PLASMA ACD-A/XX/refg Psoralen-treated COVID-19	E9788	Thawed Apheresis CONVALESCENT PLASMA ACD-A/XX/refg Psoralen-treated COVID-19
Split/Divide	CLOSED	E9789	Thawed Apheresis CONVALESCENT PLASMA ACD-A/XX/refg 1st container Psoralen-treated COVID-19	E9789	Thawed Apheresis CONVALESCENT PLASMA ACD-A/XX/refg 1st container Psoralen-treated COVID-19

Modification	Method	Source Product Code	Source Product Name	Target Product Code	Target Product Name
Split/Divide	CLOSED	E9790	Thawed Apheresis CONVALESCENT PLASMA ACD-A/XX/refg 2nd container Psoralen-treated COVID-19	E9790	Thawed Apheresis CONVALESCENT PLASMA ACD-A/XX/refg 2nd container Psoralen-treated COVID-19
Split/Divide	CLOSED	E9791	Thawed Apheresis CONVALESCENT PLASMA ACD-A/XX/refg 3rd container Psoralen-treated COVID-19	E9791	Thawed Apheresis CONVALESCENT PLASMA ACD-A/XX/refg 3rd container Psoralen-treated COVID-19
Split/Divide	CLOSED	E9792	Thawed Apheresis CONVALESCENT PLASMA ACD-A/XX/refg 4th container Psoralen-treated COVID-19	E9792	Thawed Apheresis CONVALESCENT PLASMA ACD-A/XX/refg 4th container Psoralen-treated COVID-19
Split/Divide	CLOSED	E9793	Thawed Apheresis CONVALESCENT PLASMA ACD-A/XX/refg Irradiated COVID-19	E9793	Thawed Apheresis CONVALESCENT PLASMA ACD-A/XX/refg Irradiated COVID-19
Split/Divide	CLOSED	E9796	Liquid CONVALESCENT PLASMA NS/XX/refg Irradiated COVID-19	E9796	Liquid CONVALESCENT PLASMA NS/XX/refg Irradiated COVID-19
Split/Divide	CLOSED	E9797	Liquid Apheresis CONVALESCENT PLASMA NS/XX/refg Irradiated COVID-19	E9797	Liquid Apheresis CONVALESCENT PLASMA NS/XX/refg Irradiated COVID-19
Split/Divide	CLOSED	E9798	Liquid Apheresis CONVALESCENT PLASMA ACD-A/XX/refg Irradiated COVID-19	E9798	Liquid Apheresis CONVALESCENT PLASMA ACD-A/XX/refg Irradiated COVID-19
Split/Divide	CLOSED	E9799	Liquid CONVALESCENT PLASMA CPD/XX/refg Irradiated COVID-19	E9799	Liquid CONVALESCENT PLASMA CPD/XX/refg Irradiated COVID-19
Split/Divide	CLOSED	E9800	Liquid Apheresis CONVALESCENT PLASMA CPD/XX/refg Irradiated COVID-19	E9800	Liquid Apheresis CONVALESCENT PLASMA CPD/XX/refg Irradiated COVID-19
Split/Divide	CLOSED	E9803	Thawed CONVALESCENT PLASMA CP2D/XX/refg COVID-19	E9803	Thawed CONVALESCENT PLASMA CP2D/XX/refg COVID-19
Split/Divide	CLOSED	E9806	Liquid Apheresis CONVALESCENT PLASMA NS/XX/refg Irradiated 1st container COVID-19	E9806	Liquid Apheresis CONVALESCENT PLASMA NS/XX/refg Irradiated 1st container COVID-19
Split/Divide	CLOSED	E9807	Liquid Apheresis CONVALESCENT PLASMA NS/XX/refg Irradiated 2nd container COVID-19	E9807	Liquid Apheresis CONVALESCENT PLASMA NS/XX/refg Irradiated 2nd container COVID-19
Split/Divide	CLOSED	E9808	Liquid Apheresis CONVALESCENT PLASMA NS/XX/refg Irradiated 3rd container COVID-19	E9808	Liquid Apheresis CONVALESCENT PLASMA NS/XX/refg Irradiated 3rd container COVID-19
Split/Divide	CLOSED	E9809	Liquid Apheresis CONVALESCENT PLASMA NS/XX/refg Irradiated 4th container COVID-19	E9809	Liquid Apheresis CONVALESCENT PLASMA NS/XX/refg Irradiated 4th container COVID-19
Split/Divide	CLOSED	E9810	Liquid CONVALESCENT PLASMA CPDA-1/XX/refg COVID-19	E9810	Liquid CONVALESCENT PLASMA CPDA-1/XX/refg COVID-19
Split/Divide	CLOSED	E9811	Thawed CONVALESCENT PLASMA CPDA-1/XX/refg COVID-19	E9811	Thawed CONVALESCENT PLASMA CPDA-1/XX/refg COVID-19

This is the last page of *VistA Blood Establishment Computer Software (VBECS) 2.3.2 Rev D Release Notes*.