

**MODULAR**

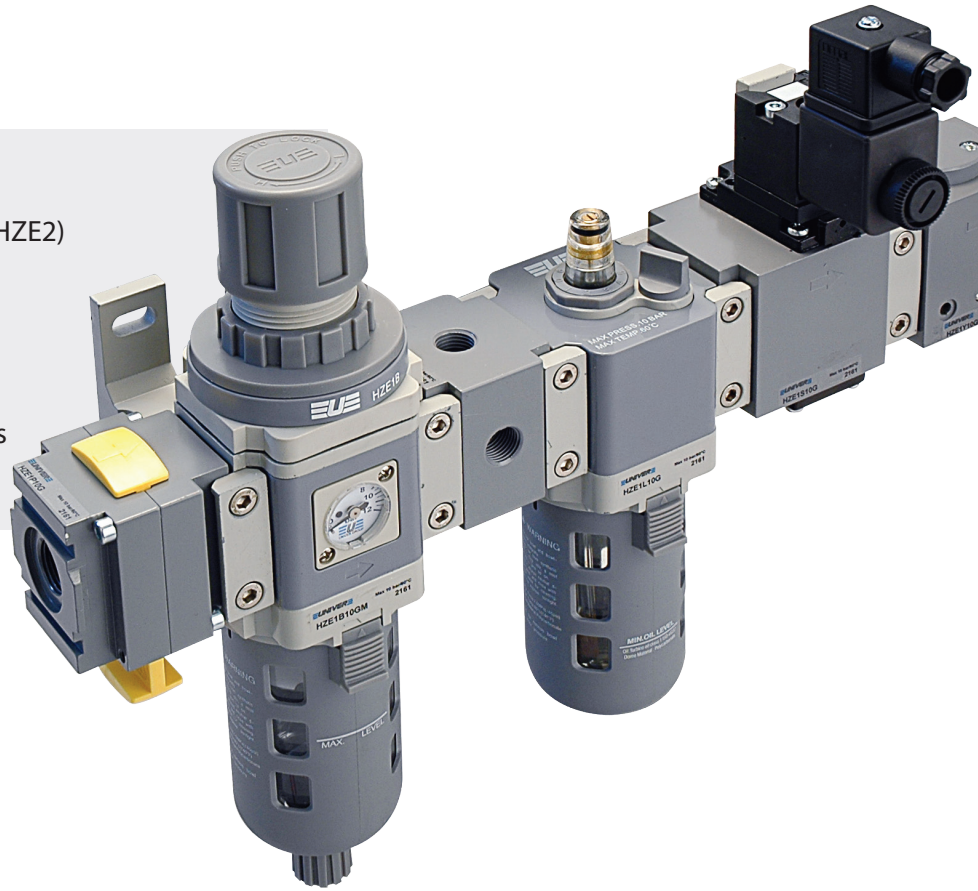
40 mm (HZE0) 63 mm (HZE1) 80 mm (HZE2)

**INTEGRATED GAUGE**

Standard supplied

**COMPLETE SOLUTION**

Possibility of assembling combinations complete with accessories


**G1/4**

Size 0



FR+L

**600**  
NI/min

**G3/8 - G1/2**

Size 1



FR+L

**2800**  
NI/min

**G1/2**

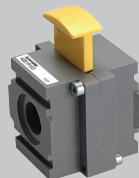
Size 2



FR+L

**4300**  
NI/min

**HZE-Y**  
Gradual starter

**HZE-N**  
Diverter block

**HZE-P**  
Lockable valve

**HZE-S**  
Shut-off valve

**HZE-RL**  
Lockable regulator

**CHARACTERISTICS**

Ambient temperature	0 ÷ +60 °C
Fluid	filtered air, with or without lubrication
Working pressure	10 bar
Pressure Max	15 bar
Size	0 - 1 - 2
Body	tecnopolymer with metal threaded elements (size 0) die-cast aluminium (size 1 - 2)
Knob	tecnopolymer
Ring nut	tecnopolymer
Bowl	polycarbonate
Bowl guard	tecnopolymer (size 1-2)
Filter element	polyethylene
Seals	nitrile rubber
Springs	steel
Diaphragm	reinforced fabric rubber


**For mounting of round gauge (HZ9P):**

Size 0 = Replace HZ9464G gauge with HZE7Z480 square adaptor G1/8, to be ordered separately

Size 1-2 = Replace HZ9464G gauge with HZE7Z480 square adaptor G1/8 placed on the rear side of the regulator or filter regulator

**CODIFICATION KEY**

H	Z	E	0	B	0	8	G		M
1	2	3	4	5	6				

1 Series	2 Size	3 Model
HZE = Air treatment units with standard manual drain	0 = Small (G1/4) 1 = Medium (G3/8 - G1/2) 2 = Large (G1/2)	F = Filter R = Regulator L = Lubricator B = Filter regulator D = Filter regulator+Lubricator (FR+L) C = Filter+Regulator+Lubricator (F+R+L)

4 Thread	5 Option	6 Pressure gauge
08G = G1/4 (tg. 0) 10G = G3/8(tg. 1) 15G = G1/2 (tg. 1-2) 20G = G3/4 (tg. 2) * 25G = G1 (tg. 2) *	A = Automatic drain (except for size 0) S = Semi-automatic drain	M = Integrated square pressure gauge (standard supplied)  Square adaptor G1/8 upon request

\* = with threaded ends

**Filter**


Size	0	1		2
Part No.	HZE0F08G	HZE1F10G	HZE1F15G	HZE2F15G
Connections	G1/4	G3/8	G1/2	G1/2
Filtration rate (µm)	5	5		5
Nominal flow rate (NI/min) <sup>(A)</sup>	1100	3500		6500
Inlet pressure Max (bar-MPa-psi)	10 - 1 - 145	10 - 1 - 145		10 - 1 - 145
Condensation drain capacity (cm <sup>3</sup> )	12	45		80
Condensation drain	manual	manual		manual

(A) = Inlet pressure 7 bar, Δp 0,5 bar

Regulator

<b>Size</b>	0	1		2
<b>Part No.</b>	HZE0R08GM	HZE1R10GM	HZE1R15GM	HZE2R15GM
<b>Connections</b>	G1/4	G3/8	G1/2	G1/2
<b>Nominal flow rate (NI/min) <sup>(A)</sup></b>	1000	2100		4300
<b>Inlet pressure Max (bar-MPa-psi)</b>	10 - 1 - 145	10 - 1 - 145		10 - 1 - 145
<b>Pressure adjustment relieving version (bar)</b>	0,5 ÷ 8,5	0,5 ÷ 8,5		0,5 ÷ 8,5
<b>Pressure gauge (standard supplied)</b>	HZ9464G	HZ9464G		HZ9464G
<b>Pressure gauge adaptor</b>	G1/8 <sup>(B)</sup>	G1/8 <sup>(C)</sup>		G1/8 <sup>(C)</sup>

(A) = Inlet pressure 7 bar, outlet pressure 5 bar - Δp 1 bar

(B) = Upon request (replace HZ9464G gauge with HZE7Z480 square adaptor G1/8, to be ordered separately)

(C) = Standard supplied (replace HZ9464G gauge with HZE7Z480 square adaptor G1/8 placed on the rear side)

Other versions available

■ Without manometer size 0

■ Lockable knob size 1-2

■ Check valve size 0-1-2

The check valve inside the regulator allows to relieve downstream pressure in a quick and effective way.

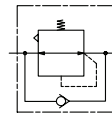


Size	Part No.
0	HZE0R08G



Size	Part No.
1	HZE1RL10GM - HZE1RL15GM
2	HZE2RL15GM

Lock not included



Size	Part No.
0	HZE0R08GMV
1	HZE1R10GMV-HZE1R15GMV
2	HZE2R15GMV

Lubricator

<b>Size</b>	0	1		2
<b>Part No.</b>	HZE0L08G	HZE1L10G	HZE1L15G	HZE2L15G
<b>Connections</b>	G1/4	G3/8	G1/2	G1/2
<b>Nominal flow rate (NI/min) <sup>(A)</sup></b>	1400	4400		7000
<b>Inlet pressure Max (bar-MPa-psi)</b>	10 - 1 - 145	10 - 1 - 145		10 - 1 - 145
<b>Bowl capacity (cm<sup>3</sup>)</b>	20	85		170
<b>Recommended oil</b>	ISO VG 32	ISO VG 32		ISO VG 32
<b>Working flow rate min. (NI/min)</b>	25	30		65

(A) = Inlet pressure 7 bar - Δp 0,5 bar

Filter regulator



Size	0		1		2
Part No.	HZE0B08GM		HZE1B10GM	HZE1B15GM	HZE2B15GM
Connections	G1/4		G3/8	G1/2	G1/2
Filtration rate (µm)	5		5		5
Nominal flow rate (NI/min) <sup>(A)</sup>	600		2300		4500
Inlet pressure Max (bar-MPa-psi)	10 - 1 - 145		10 - 1 - 145		10 - 1 - 145
Pressure adjustment - relieving version (bar)	0,5 ÷ 8,5		0,5 ÷ 8,5		0,5 ÷ 8,5
Pressure gauge (standard supplied)	HZ9464G		HZ9464G		HZ9464G
Pressure gauge adaptor	G1/8 <sup>(B)</sup>		G1/8 <sup>(C)</sup>		G1/8 <sup>(C)</sup>
Condensation drain capacity (cm <sup>3</sup> )	12		45		80
Condensation drain	manual		manual		manual

(A) = Inlet pressure 7 bar, outlet pressure 5 bar - Δp 1 bar

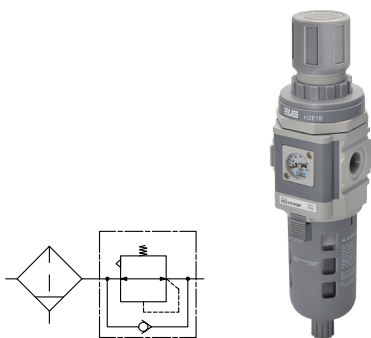
(B) = Upon request (replace HZ9464G gauge with HZE7Z480 square adaptor G1/8, to be ordered separately)

(C) = Standard supplied (replace HZ9464G gauge with HZE7Z480 square adaptor G1/8 placed on the rear side)

Other versions available

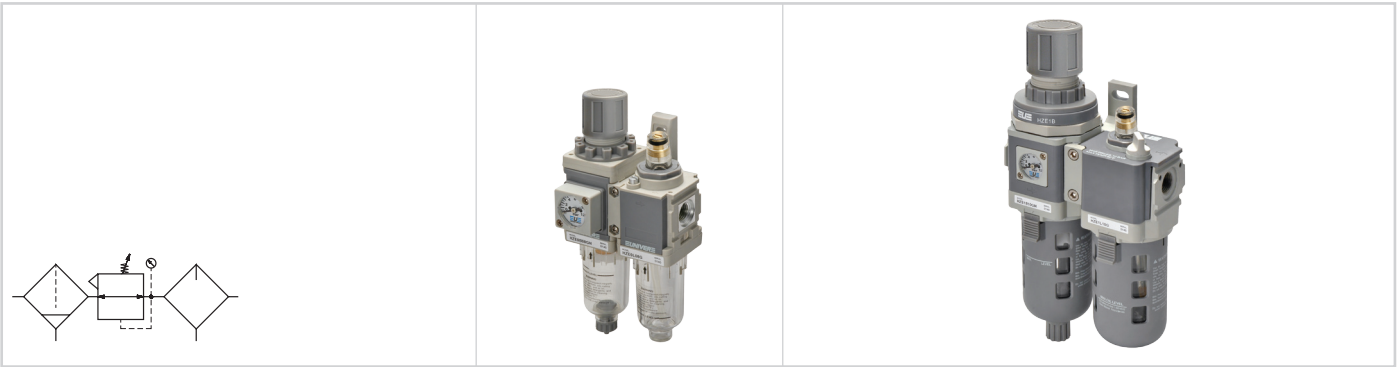
■ Check valve size 0-1-2

The check valve inside the filter regulator allows to relieve downstream pressure in a quick and effective way.



Size	Part No.
0	HZE0B08GMV
1	HZE1B10GMV-HZE1B15GMV
2	HZE2B15GMV

Filter regulator + Lubricator



Size	0		1		2
Part No.	HZE0D08GM		HZE1D10GM	HZE1D15GM	HZE2D15GM
Connections	G1/4		G3/8	G1/2	G1/2
Filtration rate (µm)	5		5		5
Nominal flow rate (NI/min) <sup>(A)</sup>	600		2800		4300
Inlet pressure Max (bar-MPa-psi)	10 - 1 - 145		10 - 1 - 145		10 - 1 - 145
Fluid	compressed air		compressed air		compressed air
Pressure adjustment - relieving version (bar)	0,5 ÷ 8,5		0,5 ÷ 8,5		0,5 ÷ 8,5
Pressure gauge (standard supplied)	HZ9464G		HZ9464G		HZ9464G
Pressure gauge adaptor	G1/8 <sup>(B)</sup>		G1/8 <sup>(C)</sup>		G1/8 <sup>(C)</sup>
Condensation drain capacity (cm <sup>3</sup> )	12		45		80
Condensation drain	manual		manual		manual
Recommended oil	ISO VG 32		ISO VG 32		ISO VG 32
Working flow rate min. (NI/min)	25		30		65

(A) = Inlet pressure 7 bar, outlet pressure 5 bar - Δp 1 bar

(B) = Upon request (replace HZ9464G gauge with HZE7Z480 square adaptor G1/8, to be ordered separately)

(C) = Standard supplied (replace HZ9464G gauge with HZE7Z480 square adaptor G1/8 placed on the rear side)

Filter + Regulator + Lubricator



Size	0		1		2
Part No.	HZE0C08GM		HZE1C10GM	HZE1C15GM	HZE2C15GM
Connections	G1/4		G3/8	G1/2	G1/2
Filtration rate (µm)	5		5		5
Nominal flow rate (NI/min) <sup>(A)</sup>	550		1700		2500
Inlet pressure Max (bar-MPa-psi)	10 - 1 - 145		10 - 1 - 145		10 - 1 - 145
Fluid	compressed air		compressed air		compressed air
Pressure adjustment - relieving version (bar)	0,5 ÷ 8,5		0,5 ÷ 8,5		0,5 ÷ 8,5
Pressure gauge (standard supplied)	HZ9464G		HZ9464G		HZ9464G
Pressure gauge adaptor	G1/8 <sup>(B)</sup>		G1/8 <sup>(C)</sup>		G1/8 <sup>(C)</sup>
Condensation drain capacity (cm <sup>3</sup> )	12		45		80
Condensation drain	manual		manual		manual
Recommended oil	ISO VG 32		ISO VG 32		ISO VG 32
Working flow rate min. (NI/min)	25		30		65

(A) = Inlet pressure 7 bar, outlet pressure 5 bar - Δp 1 bar

(B) = Upon request (replace HZ9464G gauge with HZE7Z480 square adaptor G1/8, to be ordered separately)

(C) = Standard supplied (replace HZ9464G gauge with HZE7Z480 square adaptor G1/8 placed on the rear side)

Gradual starter

	Size	0	1	
Part No.	HZE0Y08G	HZE1Y10G	HZE1Y15G	
Connections	G1/4	G3/8	G1/2	
Nominal flow rate (NI/min) <sup>(A)</sup>	900	2200		
Inlet pressure Max (bar-MPa-psi)	10-1-145	10-1-145		
Pressure min. (bar)	2	3,5		
Fluid	compressed air	compressed air		

(A) = Inlet pressure 7 bar, outlet pressure 5 bar - Δp 1 bar

Diverter block

	Size	0	1	
Part No.	HZE0N08G	HZE1N10G	HZE1N15G	
Connections	In/Out G1/4 Auxiliary G1/8	In/Out G3/8 Auxiliary G1/4	In/Out G1/2 Auxiliary G1/4	
Inlet pressure Max (bar-MPa-psi)	10-1-145	10-1-145		
Fluid	compressed air	compressed air		

Use blanking plugs to close unused ways (not included)

Lockable valve

	Size	0	1	
Part No.	HZE0P08G	HZE1P10G	HZE1P15G	
Connections	G1/4	G3/8	G1/2	
Nominal flow rate (NI/min) <sup>(A)</sup>	900	5000		
Inlet pressure Max (bar-MPa-psi)	10-1-145	10-1-145		
Fluid	compressed air	compressed air		

(A) = Inlet pressure 7 bar, outlet pressure 5 bar - Δp 1 bar

Shut-off valve

	<b>0</b>	<b>1</b>		
<b>Size</b>	HZE0S08G		HZE1S10G	HZE1S15G
<b>Part No.</b>	G1/4		G3/8	G1/2
<b>Connections</b>	900		2800	
<b>Nominal flow rate (NI/min)<sup>(A)</sup></b>	10-1-145		10-1-145	
<b>Inlet pressure Max (bar-MPa-psi)</b>	2 - 0,16 - 23		2 - 0,2 - 29	
<b>Pressure min. (bar-MPa-psi)</b>	compressed air		compressed air	
<b>Fluid</b>	poppet valve		poppet valve	
<b>Commutation system</b>	3/2 NC		3/2 NC	
<b>Ways/Position</b>	indirect electropneumatic		indirect electropneumatic	
<b>Control</b>	8		10	
<b>Nominal diameter (mm)</b>	U1 AA series		U1 AA series	
<b>Electropilot</b>	DA/DC		DA/DC	
<b>Coil</b>	two positions screw		two positions screw	
<b>Manual Override</b>				

(A) = Inlet pressure 7 bar, outlet pressure 5 bar - Δp 1 bar

Coils

<p>■ <b>Coil U1</b>                  DA-0050 12 V DC                  DA-0051 24 V DC                  DA-0106 24 V AC/50-60 Hz                  DA-0108 110 V AC/50-60 Hz                  DA-0124 230 V AC/50-60 Hz</p>	<p>■ <b>Coil U3</b>                  DC-0301 12 V DC                  DC-0302 24 V DC                  DC-0307 24 V AC/50-60 Hz                  DC-0309 110 V AC/50-60 Hz                  DC-0310 230 V AC/50-60 Hz</p>
---	---

Other versions available

<p>■ <b>Size 0 U05</b></p>	<p>■ <b>Size 1 U05</b></p>	<p>■ <b>Size 1 U3 CNOMO</b></p>
----------------------------	----------------------------	---------------------------------

HZE0/1Z200	HZE0/1/2Z210	HZE0/1/2Z300	HZE0/1/2Z310	HZE7Z480/90	HZE2Z500/501
<b>Assembly kit</b> Size 0 HZE0Z200 Size 1-2 HZE1Z200	<b>T-bracket assembly kit</b> Size 0 HZE0Z210 Size 1 HZE1Z210 Size 2 HZE2Z210	<b>C-bracket</b> Size 0 HZE0Z300 Size 1 HZE1Z300 Size 2 HZE2Z300	<b>Regulator L-bracket</b> Size 0 HZE0Z310 Size 1 HZE1Z310 Size 2 HZE2Z310	<b>Threaded adaptor for pressure gauge</b> Size 0-1-2 G1/8 HZE7Z480 G1/4 HZE7Z490 Screw torque: Max 0,6 Nm	<b>Threaded ends</b> Size 2 G3/4 HZE2Z500 G1 HZE2Z501

**Filter and filter regulator accessories**

HZE0/1/2Z600	HZE0/1/2Z600SS	HZE7Z400	HZE0/1Z401	HZE0/1Z402
<b>Standard bowl with manual drain</b> Size 0 HZE0Z600 Size 1 HZE1Z600 Size 2 HZE2Z600	<b>Bowl with semi-automatic drain</b> Size 1 HZE1Z600SS Size 2 HZE2Z600SS	<b>Automatic drain</b> Size 1-2 HZE7Z400	<b>Semi-automatic drain</b> Size 0 HZE0Z401 Size 1-2 HZE1Z401	<b>Manual drain</b> Size 0 HZE0Z402 Size 1-2 HZE1Z402

HZE0/1/2Z660	HZE1/2Z670
<b>Filter elements 5 µm</b> Size 0 HZE0Z660 Size 1 HZE1Z660 Size 2 HZE2Z660	<b>Coalescing filter 0,3 µm</b> Size 1 HZE1Z670 Size 2 HZE2Z670

Other filter elements upon request

**Regulator and filter regulator accessories**

HZE0/1/2Z602	HZE1/2Z652/4/8	HZE0/1/2Z603	HZE0/1/2Z610/1
<b>Knob</b> Size 0 HZE0Z602 Size 1 HZE1Z602 Size 2 HZE2Z602	<b>Regulator spring</b> Size 1 Pressure adjustment HZE1Z652 0,5 ÷ 1,7 HZE1Z654 0,5 ÷ 3,5 HZE1Z658 0,5 ÷ 8,5 Size 2 HZE2Z652 0,5 ÷ 1,7 HZE2Z654 0,5 ÷ 3,5 HZE2Z658 0,5 ÷ 8,5	<b>Ring nut for panel</b> Size 0 HZE0Z603 Size 1 HZE1Z603 Size 2 HZE2Z603	<b>Diaphragm kit</b> Size 0 HZE0Z610 relieving HZE0Z611 non-relieving Size 1 HZE1Z610 relieving HZE1Z611 non-relieving Size 2 HZE2Z610 relieving HZE2Z611 non-relieving

**Lubricator accessories**

HZE0/1/2Z601	HZE7Z470
<b>Standard bowl</b> Size 0 HZE0Z601 Size 1 HZE1Z601 Size 2 HZE2Z601	<b>Lubricator transparent dome</b> Size 0-1-2 HZE7Z470