

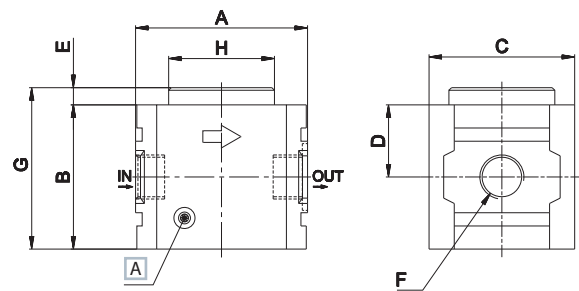
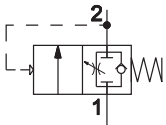
The gradual starter is used in pneumatic circuits where a cut-off in pressure, an abrupt start-up is to be avoided to prevent possible damages to equipment.

FUNCTIONING PRINCIPLE: 2 way valve which, in the stand-by position, allows the passage of an air regulated flow. When the working pressure is reached the valve allows the air full passage.

Size	1	
Part no.	HZE1Y10G	HZE1Y15G
Threaded port	G3/8	G1/2
Flow rate (NI/min) <sup>(A)</sup>	2200	
Max inlet pressure (bar-MPa-psi)	10-1-145	
Min pressure (bar)	3,5	
Fluid	compressed air	
Temperature (°C)	-20 ÷ 80	
Weight (Kg)	0,485	

(A) = inlet pressure 6 bar, outlet pressure 5 bar - Δp 1 bar

## HZE-Y



**A** Regulating screw

Size	A	B	C	D	E	F	G	Ø H
1	65	55	55	27,5	6,5	G3/8-G1/2	61,5	40

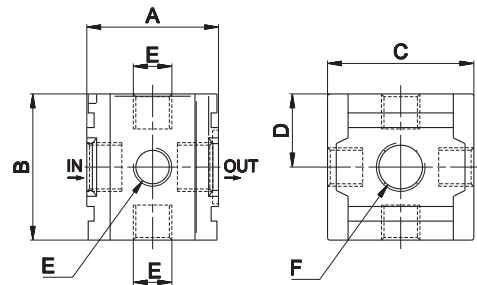


Threaded ports on each side. Possibility to assembly pressure switch.

Size	1	
Part no.	HZE1N10G	HZE1N15G
Threaded port (A)	G3/8	G1/2
Max inlet pressure (bar-MPa-psi)	10-1-145	
Fluid	compressed air	
Temperature (°C)	0 ÷ 60	
Weight (Kg)	0,23	

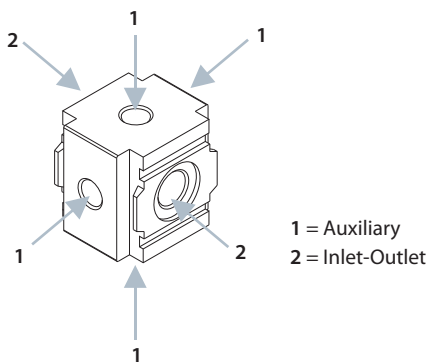
(A) = plug not included

HZE-N



Size	A	B	C	D	E	F
1	45	50	50	25	G1/4	G3/8-G1/2

> Ports

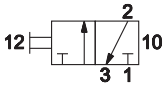
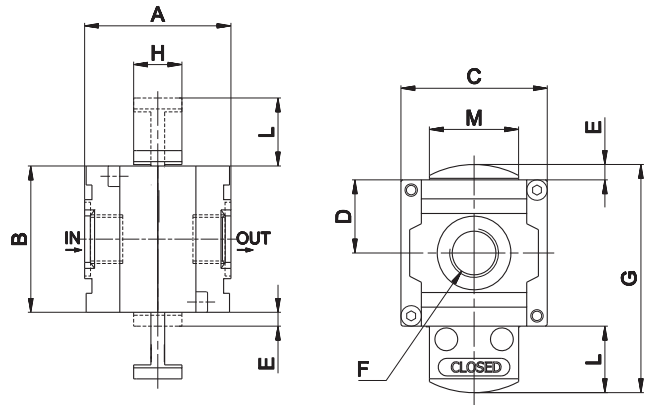


The lockable valve is a 3 way 2 position manual valve. In the closed position it enables discharge of the downstream system of the air preparation equipment. By using one or two locks (not included) the user is not allowed to pressurize the system accidentally.

Size	1	
Part no.	HZE1P10G	HZE1P15G
Threaded port	G3/8	G1/2
Flow rate (NI/min) <sup>(A)</sup>	5000	
Max inlet pressure (bar-MPa-psi)	10-1-145	
Fluid	compressed air	
Temperature(°C)	0 ÷ 60	
Weight (Kg)	0,28	

(A) = inlet pressure 6 bar, outlet pressure 5 bar - Δp 1 bar

HZE-P



Size	A	B	C	D	E	F	G	H	L	M
1	50	50	50	25	5	G3/8-G1/2	78	17	23	30,5

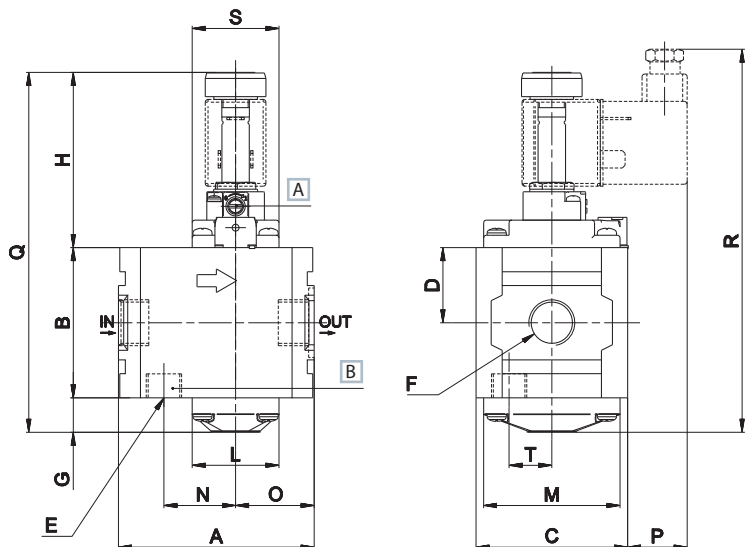
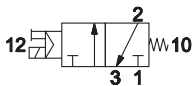


The 3 ways valve enable system supply and exhaust.  
Version with CNOMO or 15mm electropilot is available upon request.

Size	1	
Part no.	HZE1S10G	HZE1S15G
Threaded port	G3/8	G1/2
Flow rate (NI/min) <sup>(A)</sup>	2800	
Max inlet pressure (bar-MPa-psi)	10-1-145	
Min pressure (bar-MPa-psi)	2 - 0,2 - 29	
Fluid	compressed air	
Temperature (°C)	5 ÷ 60	
Weight (Kg)	0,7	
Commutation system	poppet valve	
Ways/Position	3/2 NC	
Control	indirect electropneumatic control	
Nominal diameter	10	
Electropilot	U1 / U3	
Coil	12 V DC - 24 V DC - 24 V AC - 110 V AC - 23	
Manual Override	with 2 position screw	

(A) = inlet pressure 6 bar, outlet pressure 5 bar - Δp 1 bar

HZE-S



- A Manual override
- B Exhaust

size	A	B	C	D	E	F	G	H	ØL	ØM	N	O	P	Q	R	S	T
1	71	54,5	55	27	G1/4	G3/8-G1/2	12,5	64	32	49,5	26	29	22	131	139	31,5	15,5

Coils and silencers are not included

