

Universal Groovers

Stainless Steel

- Popular among concrete finishers
- Turned up edges for clean groove
- Rivet-free design



Universal Hand Groover

Wood No.	ProForm® No.	Size	Bit
CF118	CF118PF	6"x3"	1/2" wide 1/2" deep



Jumbo Hand Groover

Wood No.	ProForm® No.	Size	Bit
CF119	CF119PF	6"x5"	3/8" wide 1/2" deep



Add "01" after part no. for walking groover without handle

Universal Walking Groover

- Includes all-angle bracket and 5' wood clevis handle (CC386)

No.	Size	Bit
CC089	6"x3"	1/2" wide/deep

Western Groover

Stainless Steel

Popular on commercial jobs. Single piece formed groover with top plate. Cuts grooves 3/16"x3/16". Blade is 2" wide, 3" long.

No. CF402



SIGNATURE EDGERS & GROOVERS



Western Style Hand Groover

Stainless Steel

- Strong #18 gauge brushed stainless steel blade
- Tall sides on the tool prevent build-up on top of groover, during use
- Rivet-free for a smooth finish

Wood No.	ProForm® No.	Size	Radius	Depth
CF1418	CF1418PF	6"x6"	1/8"	1/4"
CF1218	CF1218PF	6"x6"	1/8"	1/2"
CF1014	CF1014PF	6"x6"	1/4"	1"
CF3438	CF3438PF	6"x6"	3/8"	3/4"
CF1212	CF1212PF	6"x6"	1/2"	1/2"
CF3412	CF3412PF	6"x6"	1/2"	3/4"
CF1012	CF1012PF	6"x6"	1/2"	1"
CF3434	CF3434PF	6"x6"	3/4"	3/4"
CF1034	CF1034PF	6"x6"	3/4"	1"



Western Style Hand Edger

Stainless Steel

- Strong #18 gauge brushed stainless steel blade
- Rivet-free for a smooth finish
- Radius matches Western Style Hand Groover

Wood No.	ProForm® No.	Size	Radius	Lip
CF1212SE	CF1212SEPF	6"x6"	1/2"	1/2"
CF3412SE	CF3412SEPF	6"x6"	1/2"	3/4"
CF5812SE	CF5812SEPF	6"x6"	1/2"	5/8"
CF1012SE	CF1012SEPF	6"x6"	1/2"	1"
CF3434SE	CF3434SEPF	6"x6"	3/4"	3/4"

Stainless Steel Hand Groover

- Top plate provides additional strength to move through concrete
- Special polished stainless steel for extra smooth working surface
- Turned up ends prevents gouging

Wood No.	ProForm® No.	Size	Radius	Depth
CF599	CF599PF	6"x6"	1/4"	3/8"

Stainless Steel Walking Groover

- Turned up ends prevents gouging
- Includes 5' wood clevis handle (CC386)
- All-angle bracket adjusts 360° to work from any angle

No.	Size	Radius	Depth
CC599	6"x6"	1/4"	3/8"

Add "01" after part no. for walking groover without handle

SIGNATURE EDGERS & GROOVERS



Curved End Edgers

Strong #16 gauge stainless steel blade. Edger has turned up end(s) to prevent gouging of concrete.

A) Both Ends Curved **NEW SIZES**

Wood No.	ProForm® No.	Size	Radius	Lip
CF142	CF142PF	6"x2-1/2"	1/4"	3/8"
CF141	CF141PF	6"x3"	1/4"	3/8"
CF092C	CF092PFC	6"x3"	3/8"	1/2"
CF172C	CF172PFC	6"x4"	1/4"	3/8"
CF173C	CF173PFC	6"x4"	3/8"	1/2"
CF165C	CF165PFC	6"x4"	1/2"	5/8"
CF168C	CF168PFC	8"x4"	1/4"	3/8"
CF167C	CF167PFC	8"x4"	3/8"	1/2"
CF166C	CF166PFC	8"x4"	1/2"	5/8"

B) One End Curved **NEW**

Flast side fits against walls and forms.

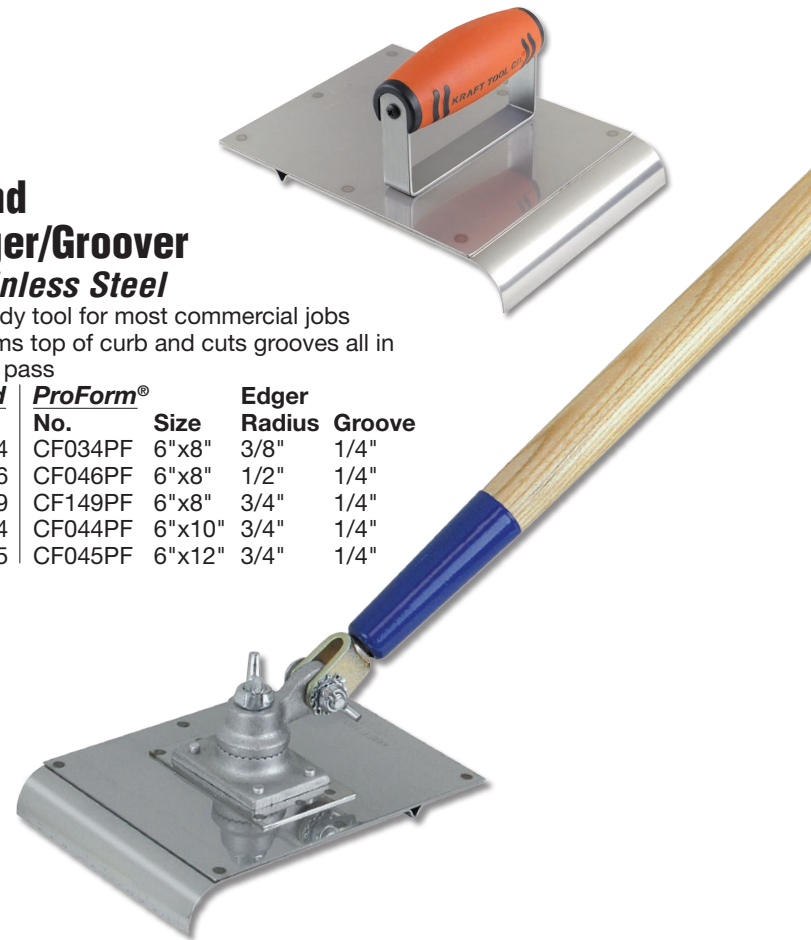
Wood No.	ProForm® No.	Size	Radius	Lip
CF141CF	CF141PFCF	6"x3"	1/4"	3/8"
CF092CF	CF092PFCF	6"x3"	3/8"	1/2"
CF172CF	CF172PFCF	6"x4"	1/4"	3/8"
CF173CF	CF173PFCF	6"x4"	3/8"	1/2"
CF165CF	CF165PFCF	6"x4"	1/2"	5/8"
CF168CF	CF168PFCF	8"x4"	1/4"	3/8"
CF167CF	CF167PFCF	8"x4"	3/8"	1/2"
CF166CF	CF166PFCF	8"x4"	1/2"	5/8"

See Elite Series™ Edgers on page 53

Hand Edger/Groover Stainless Steel

- Handy tool for most commercial jobs
- Forms top of curb and cuts grooves all in one pass

Wood No.	ProForm® No.	Size	Edger Radius	Groove
CF034	CF034PF	6"x8"	3/8"	1/4"
CF046	CF046PF	6"x8"	1/2"	1/4"
CF149	CF149PF	6"x8"	3/4"	1/4"
CF044	CF044PF	6"x10"	3/4"	1/4"
CF045	CF045PF	6"x12"	3/4"	1/4"



Walking Edger/Groover

- Includes all-angle bracket and 5' wood clevis handle (CC386)

No.	Size	Edger Radius	Groove
CC034	6"x8"	3/8"	1/4"
CC149	6"x8"	3/4"	1/4"

Add "01" after part no. for groover without handle

Deep Bit Hand Groover Stainless Steel

- Strong #16 gauge blade
- Edger has turned up ends to prevent gouging of concrete
- Top plate provides additional strength to move through concrete

Wood No.	ProForm® No.	Size	Radius	Depth
CF622	CF622PF	6"x5"	3/8"	1/2"
CF115	CF115PF	6"x6"	1/4"	1"
CF116	CF116PF	6"x6"	1/4"	1-1/2"
CF117	CF117PF	6"x6"	1/4"	2"
CF110	CF110PF	10"x3-1/2"	3/8"	1/2"

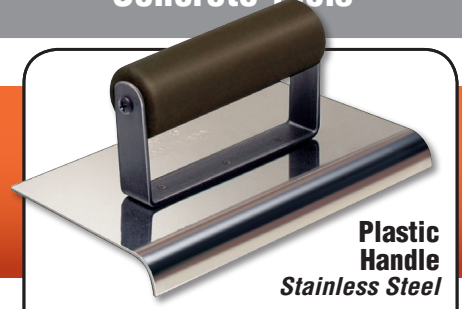


Hand Edger #18 Gauge Stainless Steel

Special brushed stainless steel for an extra smooth working surface.

Wood No.	ProForm® No.	Size	Radius	Lip
CF039	CF039PF	8"x8"	1/4"	1/2"
CF035	CF035PF	8"x8"	1/2"	3/4"
CF038	CF038PF	8"x8"	3/4"	7/8"

See Elite Series™ Edgers on page 53



6" Long Sidewalk Edgers			
No.	Width	Radius	Lip
CF161PF	1-1/2"	1/4"	3/8"
CF160PF	2"	3/8"	1/2"
CF162PF	2-1/2"	1/4"	3/8"
CF170PF	3"	1/8"	1/4"
CF163PF	3"	1/4"	3/8"
CF092PF	3"	3/8"	1/2"
CF164PF	3-1/2"	3/8"	1/2"
CF171PF	4"	1/8"	1/4"
CF172PF	4"	1/4"	3/8"
CF173PF	4"	3/8"	1/2"
CF165PF	4"	1/2"	5/8"
CF907PF	4"	5/8"	3/4"
CF174PF	4"	3/4"	1"
CF136PF	6"	1/8"	1/4"
CF137PF	6"	1/4"	3/8"
CF138PF	6"	3/8"	1/2"
CF175PF	6"	1/2"	5/8"
CF912PF	6"	5/8"	3/4"
CF139PF	6"	3/4"	1"
CF908PF	6"	1"	1-1/4"
8" Long Sidewalk Edgers			
No.	Width	Radius	Lip
CF169PF	4"	1/8"	1/4"
CF168PF	4"	1/4"	3/8"
CF167PF	4"	3/8"	1/2"
CF166PF	4"	1/2"	5/8"
CF185PF	4"	3/4"	1"
CF127PF	5"	1/4"	3/8"
CF128PF	5"	3/8"	1/2"
CF129PF	5"	1/2"	5/8"
CF130PF	5"	3/4"	1"
CF100PF	6"	1/8"	1/4"
CF101PF	6"	1/4"	3/8"
CF102PF	6"	3/8"	1/2"
CF103PF	6"	1/2"	5/8"
CF104PF	6"	3/4"	1"
CF105PF	8"	1/8"	1/4"
CF106PF	8"	1/4"	3/8"
CF107PF	8"	3/8"	1/2"
CF108PF	8"	1/2"	5/8"
CF109PF	8"	3/4"	1"
9" Long Highway Edgers			
No.	Width	Radius	Lip
CF155PF	2-1/2"	1/2"	5/8"
CF176PF	3"	1/2"	5/8"
CF188PF	4"	1/2"	5/8"
CF189PF	4"	3/4"	1"
CF190PF	5"	3/8"	1/2"
CF191PF	5"	1/2"	5/8"
CF241PF	6"	1-1/2"	2"
10" Long Highway Edgers			
No.	Width	Radius	Lip
CF158PF	3-1/2"	1/4"	3/8"
CF159PF	4"	3/8"	1/2"
CF154PF	4"	1"	1-1/4"
CF140PF	4"	1-1/2"	2"
CF143PF	5-3/4"	2"	2-5/8"
CF909PF	6"	1/4"	3/8"
CF320PF	6"	3/8"	1/2"
CF321PF	6"	1/2"	5/8"
CF906PF	6"	5/8"	3/4"
CF322PF	6"	3/4"	1"
CF323PF	6"	1"	1-1/4"
CF240PF	6"	1-1/2"	2"
CF144PF	6-1/4"	3"	3-1/4"

6" Long Sidewalk Edgers			
No.	Width	Radius	Lip
CF161	1-1/2"	1/4"	3/8"
CF160	2"	3/8"	1/2"
CF162	2-1/2"	1/4"	3/8"
CF170	3"	1/8"	1/4"
CF163	3"	1/4"	3/8"
CF092	3"	3/8"	1/2"
CF164	3-1/2"	3/8"	1/2"
CF171	4"	1/8"	1/4"
CF172	4"	1/4"	3/8"
CF173	4"	3/8"	1/2"
CF165	4"	1/2"	5/8"
CF907	4"	5/8"	3/4"
CF174	4"	3/4"	1"
CF136	6"	1/8"	1/4"
CF137	6"	1/4"	3/8"
CF138	6"	3/8"	1/2"
CF175	6"	1/2"	5/8"
CF912	6"	5/8"	3/4"
CF139	6"	3/4"	1"
CF908	6"	1"	1-1/4"
8" Long Sidewalk Edgers			
No.	Width	Radius	Lip
CF169	4"	1/8"	1/4"
CF168	4"	1/4"	3/8"
CF167	4"	3/8"	1/2"
CF166	4"	1/2"	5/8"
CF185	4"	3/4"	1"
CF127	5"	1/4"	3/8"
CF128	5"	3/8"	1/2"
CF129	5"	1/2"	5/8"
CF130	5"	3/4"	1"
CF100	6"	1/8"	1/4"
CF101	6"	1/4"	3/8"
CF102	6"	3/8"	1/2"
CF103	6"	1/2"	5/8"
CF104	6"	3/4"	1"
CF105	8"	1/8"	1/4"
CF106	8"	1/4"	3/8"
CF107	8"	3/8"	1/2"
CF108	8"	1/2"	5/8"
CF109	8"	3/4"	1"
9" Long Highway Edgers			
No.	Width	Radius	Lip
CF155	2-1/2"	1/2"	5/8"
CF176	3"	1/2"	5/8"
CF188	4"	1/2"	5/8"
CF189	4"	3/4"	1"
CF190	5"	3/8"	1/2"
CF191	5"	1/2"	5/8"
CF241	6"	1-1/2"	2"
10" Long Highway Edgers			
No.	Width	Radius	Lip
CF158	3-1/2"	1/4"	3/8"
CF159	4"	3/8"	1/2"
CF154	4"	1"	1-1/4"
CF140	4"	1-1/2"	2"
CF143	5-3/4"	2"	2-5/8"
CF909	6"	1/4"	3/8"
CF320	6"	3/8"	1/2"
CF321	6"	1/2"	5/8"
CF906	6"	5/8"	3/4"
CF322	6"	3/4"	1"
CF323	6"	1"	1-1/4"
CF240	6"	1-1/2"	2"
CF144	6-1/4"	3"	3-1/4"

6" Long Sidewalk Edgers			
No.	Width	Radius	Lip
CF161P	1-1/2"	1/4"	3/8"
CF160P	2"	3/8"	1/2"
CF162P	2-1/2"	1/4"	3/8"
CF170P	3"	1/8"	1/4"
CF163P	3"	1/4"	3/8"
CF092P	3"	3/8"	1/2"
CF164P	3-1/2"	3/8"	1/2"
CF171P	4"	1/8"	1/4"
CF172P	4"	1/4"	3/8"
CF173P	4"	3/8"	1/2"
CF165P	4"	1/2"	5/8"
CF907P	4"	5/8"	3/4"
CF174P	4"	3/4"	1"
CF136P	6"	1/8"	1/4"
CF137P	6"	1/4"	3/8"
CF138P	6"	3/8"	1/2"
CF175P	6"	1/2"	5/8"
CF912P	6"	5/8"	3/4"
CF139P	6"	3/4"	1"
CF908P	6"	1"	1-1/4"
8" Long Sidewalk Edgers			
No.	Width	Radius	Lip
CF169P	4"	1/8"	1/4"
CF168P	4"	1/4"	3/8"
CF167P	4"	3/8"	1/2"
CF166P	4"	1/2"	5/8"
CF185P	4"	3/4"	1"
CF127P	5"	1/4"	3/8"
CF128P	5"	3/8"	1/2"
CF129P	5"	1/2"	5/8"
CF130P	5"	3/4"	1"
CF100P	6"	1/8"	1/4"
CF101P	6"	1/4"	3/8"
CF102P	6"	3/8"	1/2"
CF103P	6"	1/2"	5/8"
CF104P	6"	3/4"	1"
CF105P	8"	1/8"	1/4"
CF106P	8"	1/4"	3/8"
CF107P	8"	3/8"	1/2"
CF108P	8"	1/2"	5/8"
CF109P	8"	3/4"	1"
9" Long Highway Edgers			
No.	Width	Radius	Lip
CF155P	2-1/2"	1/2"	5/8"
CF176P	3"	1/2"	5/8"
CF188P	4"	1/2"	5/8"
CF189P	4"	3/4"	1"
CF190P	5"	3/8"	1/2"
CF191P	5"	1/2"	5/8"
CF241P	6"	1-1/2"	2"
10" Long Highway Edgers			
No.	Width	Radius	Lip
CF158P	3-1/2"	1/4"	3/8"
CF159P	4"	3/8"	1/2"
CF154P	4"	1"	1-1/4"
CF140P	4"	1-1/2"	2"
CF143P	5-3/4"	2"	2-5/8"
CF909P	6"	1/4"	3/8"
CF320P	6"	3/8"	1/2"
CF321P	6"	1/2"	5/8"
CF906P	6"	5/8"	3/4"
CF322P	6"	3/4"	1"
CF323P	6"	1"	1-1/4"
CF240P	6"	1-1/2"	2"
CF144P	6-1/4"	3"	3-1/4"

Sidewalk & Highway Edgers

Available in 3 handle styles

#16 Gauge Stainless Steel

Rivet Free

Add "01" after part no. for groover without handle



Heavy-Duty Walking Groover

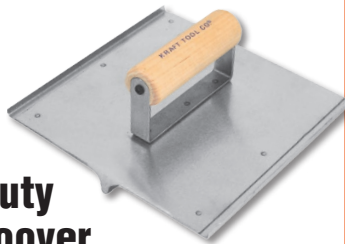
- One-piece formed, closed end bit
- Strong stainless steel blade with full top-plate for extra strength
- Narrow top plate available in some sizes for a lighter tool
- Includes 54" hardwood clevis handle (CC656)

Full Top Plate

No.	Size	Bit Width	Depth
CC756	8"x12"	1/4"	1/4"
No.	Size	Radius	Depth
CC757	8"x12"	3/8"	3/4"
CC758	8"x18"	3/8"	3/4"
CC759	8"x12"	3/4"	7/8"

Narrow Top Plate (not shown)

No.	Size	Radius	Depth
CC757N	8"x12"	3/8"	3/4"
CC759N	8"x12"	3/4"	7/8"



Heavy-Duty Hand Groover

- One-piece formed, closed end bit
- Brushed stainless steel creates smooth working surface
- Top plate increases strength for cutting grooves in concrete

No.	Size	Width	Depth
CF756	6"x6"	1/4"	1/4"
CF757	8"x5"	3/8"	3/4"

Clevis Wood Handles For Bronze and Stainless Steel Walking Tools

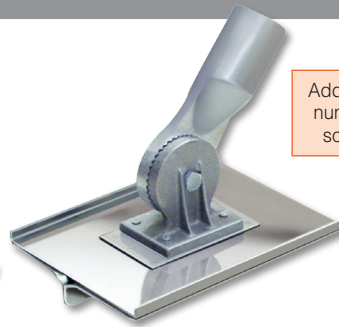
A) Long Handle

No.	Description
CC386	5' Handle with Steel Clevis
CC266	6' Handle with Steel Clevis

B) Short Handle

Short handle attaches to long-handled tools so they can be used as a hand tool and in tight spaces.

No.	Description
CC299	6" Handle with Steel Clevis

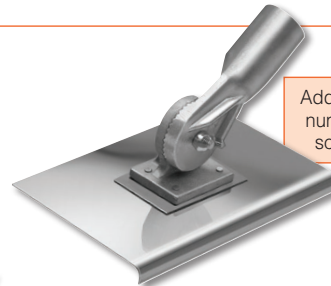


Add "BT" after part number for button socket (CC698)

Walking Groover With Handle Socket Bracket

- Made of heavy gauge stainless steel
- Reinforced with an electrically welded back plate to which the all-angle attachment is fastened, creating a rivet free design for a
- Use threaded bull float handles (sold separately, see page 22)

No.	Size	Radius	Depth
CC357	8"x5"	3/8"	1"
CC356	8"x6"	1/4"	3/4"
CC355	10"x3-1/2"	3/8"	1/2"



Add "BT" after part number for button socket (CC698)

Walking Edger with Handle Socket Bracket

Made of heavy gauge stainless steel. This tool is reinforced with electrically welded back plate to which the handle attachment is fastened. Handle socket can be tightened so you can move it from one side to the other. Handle socket accepts threaded bull float extension handles (sold separately, page 22).

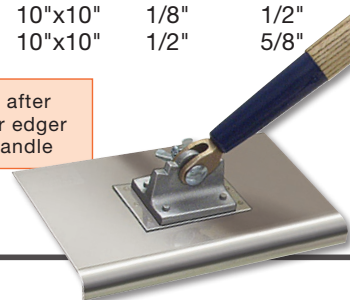
No.	Size	Radius	Lip
CC351	8"x5"	3/8"	1/2"
CC350	10"x6"	3/8"	1/2"

Single-Action Two-Way Walking Edger

Made of heavy gauge stainless steel, this tool is reinforced with electrically welded back plate to which the handle attachment is fastened. Handle can be tightened so it can be flipped from one side to the other. Includes 5' wood clevis handle (CC386).

No.	Size	Radius	Lip
CC244	8"x4"	1/2"	5/8"
CC241	10"x6"	3/8"	1/2"
CC242	10"x6"	1/2"	5/8"
CC245	10"x10"	1/8"	1/2"
CC243	10"x10"	1/2"	5/8"

Add "01" after part no. for edger without handle



Add "01" after part no. for groover without handle

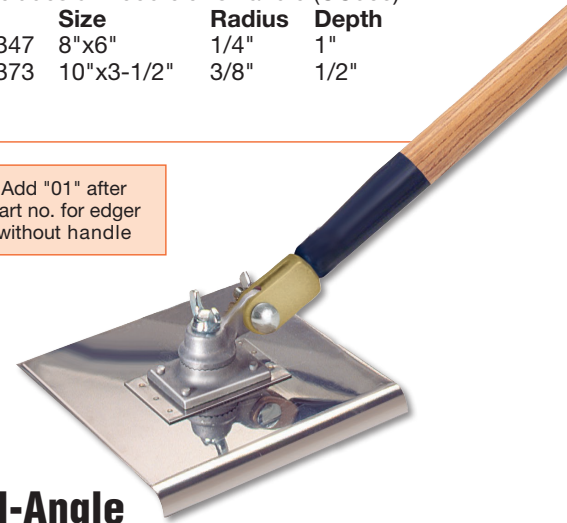


All-Angle Walking Groover

- Made of heavy gauge stainless steel
- Reinforced with an electrically welded back plate to which the all-angle attachment is fastened
- Rivet free design for a smooth face
- Includes 5' wood clevis handle (CC386)

No.	Size	Radius	Depth
CC347	8"x6"	1/4"	1"
CC373	10"x3-1/2"	3/8"	1/2"

Add "01" after part no. for edger without handle



All-Angle Walking Edgers

Made of heavy gauge stainless steel, this tool is reinforced with an electrically welded back plate to which the all-angle attachment is fastened. No rivets, completely smooth face. Includes 5' wood handle (CC386).

No.	Size	Radius	Lip
CC122	6"x2-3/4"	3/8"	1/2"
CC168	8"x4"	1/4"	3/8"
CC167	8"x4"	3/8"	1/2"
CC120	8"x4"	1/2"	5/8"
CC121	8"x4"	3/4"	7/8"
CC101	8"x6"	1/4"	3/8"
CC102	8"x6"	3/8"	1/2"
CC103	8"x6"	1/2"	5/8"
CC104	8"x6"	3/4"	7/8"
CC123	8"x8"	1/4"	3/8"
CC124	8"x8"	3/8"	1/2"
CC108	8"x8"	1/2"	5/8"
CC109	8"x8"	3/4"	7/8"
CC371	10"x3"	3/8"	3/4"
CC370	10"x6"	3/8"	1/2"
CC365	10"x6"	3/8"	3/4"
CC125	10"x6"	1/2"	5/8"
CC126	10"x6"	3/4"	7/8"
CC366	10"x10"	1/8"	3/4"
CC127	10"x10"	3/8"	1/2"
CC128	10"x10"	1/2"	5/8"
CC129	10"x10"	3/4"	7/8"

Walking Airplane Groovers With EZY-Tilt® II Bracket

Groovers are made of high quality cast aluminum with broken-in face. Bit size matches hand groovers (CF304 and CF314; page 49) in depth. Adjustable EZY-Tilt® II bracket (CC294) allows finisher to use tool at the perfect angle.

Single Bit Groovers

A) 8"x24" Groover

No.	Bit Depth	Bit Width
<i>Big Bit</i>		
CC304AS	3/4"	7/8"
<i>Deep Bit</i>		
CC314AS	1"	1/2"

Double Bit Groovers

B) 8"x24" Groover

No.	Bit Depth	Bit Width
<i>Big Bit</i>		
CC304A	3/4"	7/8"
<i>Deep Bit</i>		
CC314A	1"	1/2"

C) 8"x24" Round End Groover

No.	Bit Depth	Bit Width
<i>Big Bit</i>		
CC304ARE	3/4"	7/8"
<i>Deep Bit</i>		
CC314ARE	1"	1/2"

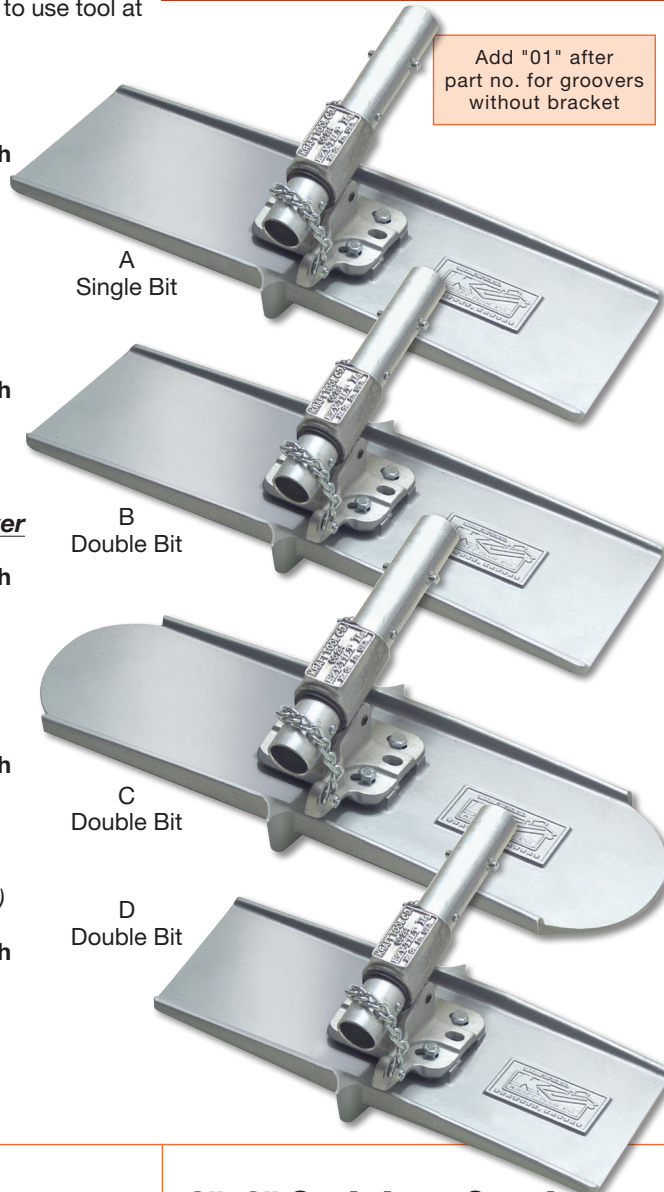
D) 8"x12" Groover

No.	Bit Depth	Bit Width
<i>Big Bit</i>		
CC304B	3/4"	7/8"
<i>Deep Bit</i>		
CC314B	1"	1/2"

E) 8"x8" Groover (not shown)

No.	Bit Depth	Bit Width
<i>Big Bit</i>		
CC304C	3/4"	7/8"
<i>Deep Bit</i>		
CC314C	1"	1/2"

WALKING GROOVERS



Add "01" after part no. for groovers without bracket

West Coast Style Airplane Groover

Made of high quality cast aluminum. Groover cuts clean sharp grooves. Tool measures 8"x24" with broken-in face. Fits clevis handles and all bull float handle adapters (sold separately page 22-24).

A) Square Ends

Double End Groover Bit

No.	Radius	Depth
CC320	3/8"	3/4"
CC322	1/4"	1"
CC324	1/4"	1-1/2"

Single End Groover Bit

No.	Radius	Depth
CC321	3/8"	3/4"
CC323	1/4"	1"
CC325	1/4"	1-1/2"

B) Round Ends

Double End Groover Bit

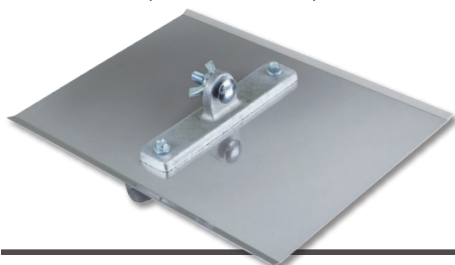
No.	Radius	Depth	Width
CC322RE	1/4"	1"	1"



Power Groover

- Blade has broken-in front and back
- Cuts sharp, clean grooves
- Cast aluminum bits are replaceable
- Bits are curved in front and back
- Use clevis handle (sold separately)

No.	Size	Radius	Depth	Width
CC380	9"x12"	1/4"	3/4"	5/8"
CC381	9"x12"	1/4"	1"	5/8"
CC382	9"x12"	1/4"	1-1/2"	5/8"
CC383	Set of (3) Different Size Replacement Bits (3/4", 1", 1-1/2")			

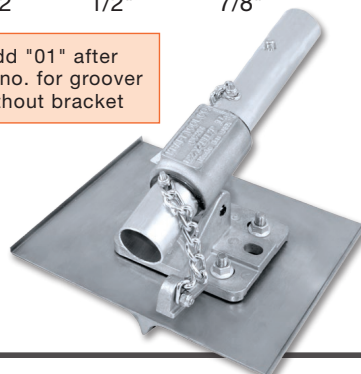


8"x8" Stainless Steel Walking Groover

Special brushed stainless steel blade. Includes EZY-Tilt® II bracket (CC294). Closed end bit for clean grooves.

No.	Radius	Depth
CC021	1/2"	3/4"
CC022	1/2"	7/8"

Add "01" after part no. for groover without bracket

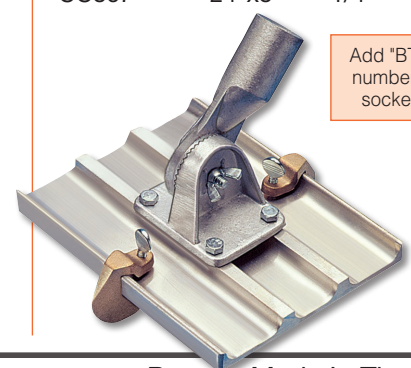


Magnesium Jumbo Paver's Groover

This popular groover includes choice of 1" or 1-1/2" bronze bit. Replaceable groover bit is adjustable. Add additional groovers for parallel lines (page 29). Includes adjustable bracket for threaded handles.

No.	Size	Radius	Depth
CC858	8"x8"	1/4"	1"
CC859	8"x8"	1/4"	1-1/2"
CC861	10"x8"	1/4"	1"
CC863	10"x8"	1/4"	1-1/2"
CC865	24"x8"	1/4"	1"
CC867	24"x8"	1/4"	1-1/2"

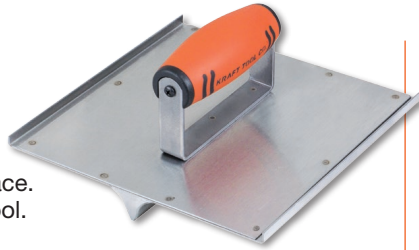
Add "BT" after part number for button socket (CC698)



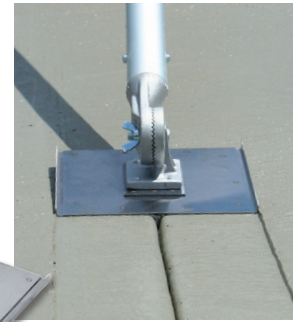
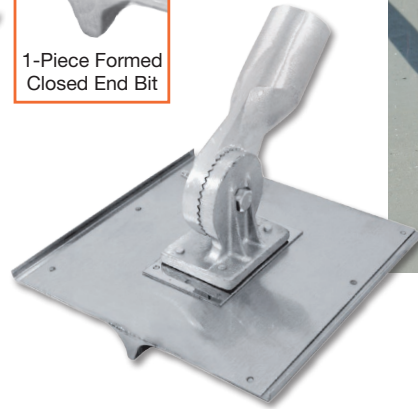
Hand Seamer/Groover Stainless Steel

Seamer makes smooth control joints. No rivet design and brushed stainless steel for an extra smooth working surface. Closed end bit eliminates build up in tool.

Wood	ProForm®			
No.	No.	Size	Radius	Depth
CF019	CF019PF	8"x5"	3/8"	5/8"
CF023	CF023PF	8"x5"	1/2"	3/4"
CF027	CF027PF	8"x5"	3/4"	7/8"
CF025	CF025PF	8"x8"	3/8"	1/2"
CF040	CF040PF	8"x8"	3/8"	5/8"
CF026	CF026PF	8"x8"	1/2"	3/4"
CF021	CF021PF	8"x8"	3/4"	7/8"
CF029	CF029PF	10"x10"	3/4"	7/8"



1-Piece Formed Closed End Bit



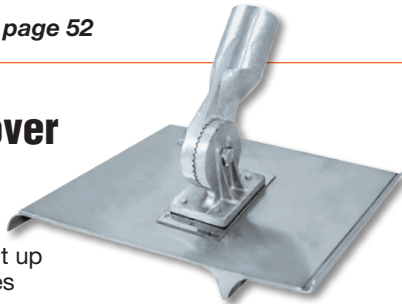
Add "BT" after part number for button socket (CC698)

See Elite Series™ Seamer/Groover, page 52

Single Edger with Groover Stainless Steel

Heavy-duty stainless steel groover makes smooth clean joints while edging. Closed end bit eliminated built up in tool. Use with threaded float handles (pages 22).

No.	Size	Radius	Bit	Shiner
CC663	6"x8"	1/2"	3/4"	2"
CC664	6"x8"	3/4"	7/8"	2"



1-Piece Formed Closed End Bit



1-Piece Formed Closed End Bit

Add "BT" after part number for button socket (CC698)

Walking Seamer/Groover Stainless Steel with Threaded Handle Bracket

Seamer makes smooth control joints. Rivet free design and brushed stainless steel for an extra smooth working surface. Closed end bit eliminates build up in tool. Use with threaded float handles (pages 22).

No.	Size	Radius	Depth
CC025	8"x8"	3/8"	1/2"
CC040	8"x8"	3/8"	5/8"
CC026	8"x8"	1/2"	3/4"
CC027	8"x8"	3/4"	7/8"
CC024	9"x7"	3/4"	7/8"
CC028	10"x10"	1/4"	1/2"
CC030	10"x10"	1/2"	3/4"
CC029	10"x10"	3/4"	7/8"

12"x5" Walking Edger with Adjustable Groover Stainless Steel

Heavy gauge stainless steel. Adjustable bronze groover locks in place. Accepts one or more fresno groover bits (page 33) for making parallel grooves. Fitted with 360 degree all-angle bracket. Includes 5' wood clevis handle (CC386).

No.	Radius	Bit Depth
CC609	3/8"	1/4"
CC607	3/8"	1/2"
CC600	3/8"	3/4"
CC601	3/8"	1"
CC613	1/2"	1/4"
CC611	1/2"	1/2"
CC602	1/2"	3/4"
CC603	1/2"	1"
CC617	3/4"	1/4"
CC615	3/4"	1/2"
CC604	3/4"	3/4"
CC605	3/4"	1"

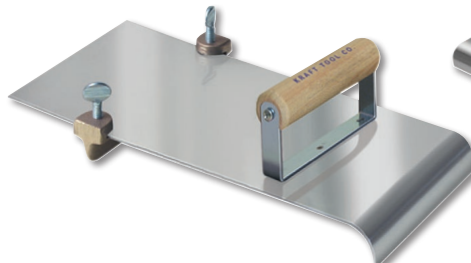


Add "01" after part no. for edger without handle

12"x5" Hand Edger with Adjustable Groover Stainless Steel

Heavy gauge stainless steel. Adjustable bronze groover locks in place. Accepts one or more fresno groover bits (page 33) for making parallel grooves. Fitted with comfortable wood handle.

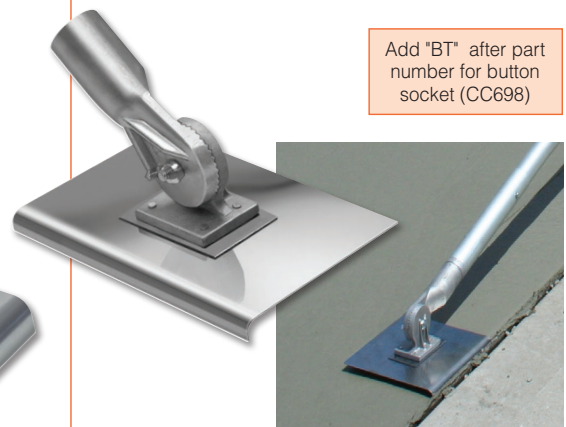
No.	Radius	Bit Depth
CF609	3/8"	1/4"
CF607	3/8"	1/2"
CF600	3/8"	3/4"
CF601	3/8"	1"
CF613	1/2"	1/4"
CF611	1/2"	1/2"
CF602	1/2"	3/4"
CF603	1/2"	1"
CF617	3/4"	1/4"
CF615	3/4"	1/2"
CF604	3/4"	3/4"
CF605	3/4"	1"



Walking Seamer/Edger Stainless Steel With Threaded Handle Bracket

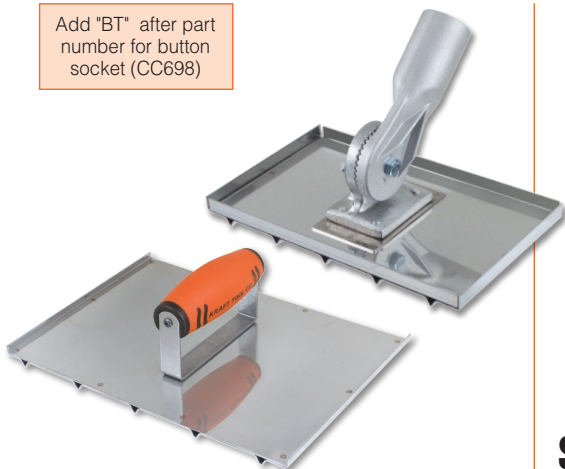
Walking edger with threaded handle socket bracket. Special brushed stainless steel for an extra smooth working surface.

No.	Size	Radius	Lip
CC031	8"x8"	1/4"	1/2"
CC039	8"x8"	3/8"	1/2"
CC023	8"x8"	3/8"	5/8"
CC035	8"x8"	1/2"	3/4"
CC038	8"x8"	3/4"	7/8"
CC032	9"x7"	3/8"	1/2"
CC033	9"x7"	1/2"	3/4"
CC036	9"x7"	3/4"	7/8"
CC037	10"x10"	1/2"	3/4"



Add "BT" after part number for button socket (CC698)

Add "BT" after part number for button socket (CC698)



Wheelchair Hand and Walking Groovers

Stainless Steel

- Cuts safety grooves for wheelchair ramps and non-skid areas
- Popular on commercial and government jobs
- Bit is 1/4" deep and 1/4" wide
- Walking groovers include threaded handle bracket

2-1/4" On Center

Wood No.	ProForm® No.	Size	No. of Grooves
CF093	CF093PF	8"x10-1/2"	5

Walking Groover

No.	Size
CC093	8"x10-1/2" 5

2" On Center

Wood No.	ProForm® No.	Size	No. of Grooves
CF918	CF918PF	6"x7-1/2"	4
CF919	CF919PF	6"x10"	5

Walking Groover

No.	Size	Grooves
CC918	6"x7-1/2"	4
CC919	6"x10"	5

View Extension Handles And Handle Adapters Pages 22-24



Left and Right Groover: 13"x6"

Straight Groover: 13-1/2"x6"



Safety Ramp Groovers

Stainless Steel

- Ideal for cutting grooves in sidewalk safety ramps where water drainage and traction are critical
- Use as a set of 3 (Left, Straight and Right)
- Order a line of part numbers for a complete set
- All safety ramp groover's groove depth and width is 1/4"x1/4"

Hand Groovers

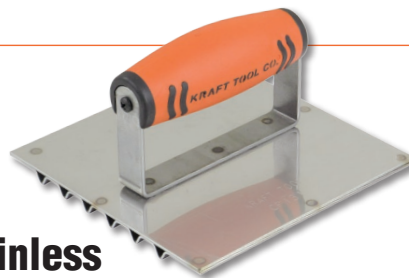
Left (45°)	Straight	Right (45°)	Groove Spacing
CF083	CF084	CF085	3/4"
CF086	CF087	CF088	1"
CF080	CF081	CF082	1-1/2"

Walking (All-Angle) Groovers

(not shown)

- Comes with 360 degree all-angle bracket
- Uses wood clevis handle (sold separately, page 58)
- Use adapters (page 24) for use with bull float handles

Left (45°)	Straight	Right (45°)	Groove Spacing
CC083	CC084	CC085	3/4"
CC086	CC087	CC088	1"
CC080	CC081	CC082	1-1/2"



Stainless Steel Driveway Safety Groover

- Heavy-duty stainless steel
- Guide lip on each side
- 6 Grooves 3/4" on center

Wood No.	ProForm® No.	Size	Bit Depth
CF131	CF131PF	6"x6"	1/4"

Curb Ramp Groover

Stainless Steel

- Cuts safety grooves in non-skid areas
- 2" wide on center groove spacing
- Bit is 1/4" deep and 3/4" wide



Hand Groover

Wood No.	ProForm® No.	Size	No. of Grooves
CF095	CF095PF	8"x10-3/8"	4



Stainless Steel Safety Step Edger/Groover

- Popular on commercial jobs
- Cuts four grooves while edging the step
- Grooves 3/4" on center
- 6"x4-1/2"

Wood No.	ProForm® No.	Bit Depth	Edger Radius
CF112	CF112PF	1/4"	1/2"

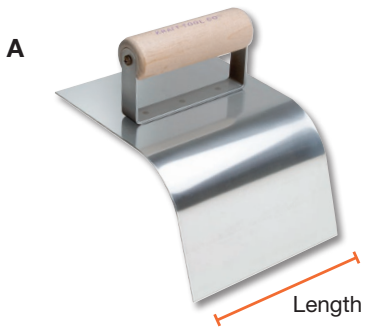
Add "BT" after part number for button socket (CC698)



Walking Groover

- Comes with threaded handle socket
- Use with threaded float handles (pages 22)

No.	Size	No. of Grooves
CC095	8"x10-3/8"	4

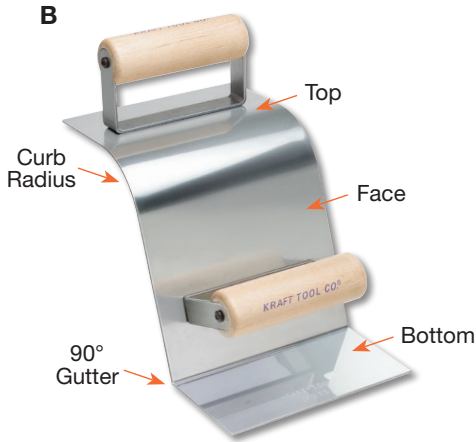


Curb and Gutter Tools

- Heavy gauge stainless steel
- Rivet free for a smooth finish
- Formed to fit the exact contour of the curbs and gutters
- Designed with batter to allow for proper drainage, while maintaining curb integrity

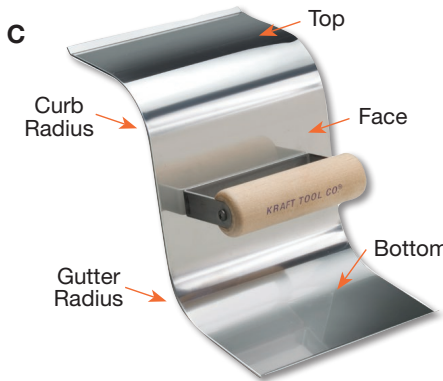
A) 6" Length (2" Batter at 6")

Wood No.	ProForm® No.	Size
CF514	CF514PF	4" Top, 6" Face, 2" Radius Curb



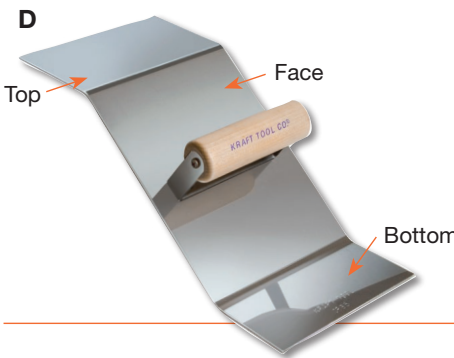
B) 6" Length (2" Batter at 6")

Wood No.	ProForm® No.	Size
CF513	CF513PF	4" Top, 6" Face, 3" Bottom, 2" Radius Curb, 90 Degree Gutter



C) 6" Length (1-1/2" Batter at 6")

Wood No.	ProForm® No.	Size
CF650	CF650PF	4-1/4" Top, 6" Face, 4" Bottom, 1-1/2" Radius Curb/Gutter



D) 6" Length (8" Batter at 6-1/2")

Wood No.	ProForm® No.	Size
CF651	CF651PF	4" Top, 8" Face, 2-3/4" Bottom, 3/4" Radius Curb/Gutter



Curb and Gutter Tools

- Stainless steel and rivet free
- Formed to fit the exact contour of edge
- Matching walking tool available

6" Length (2" Batter at 6")

Wood No.	ProForm® No.	Size
CF511	CF511PF	6" Top, 6" Face, 6" Bottom, 2" Radius Curb, 3" Radius Gutter
CF512	CF512PF	6" Top, 6" Face, 6" Bottom, 3" Radius Curb, 2" Radius Gutter



Hand Driveway Approach Tool

- Heavy-gauge stainless steel, 6" length

Wood Handle

No.	Top Width	Bottom Width	Radius	Drop
CF097	5"	4"	3/4"	1"
CF098	5"	4"	1/2"	1"
CF099	5"	4"	1"	1"

ProForm® Handle

No.	Top Width	Bottom Width	Radius	Drop
CF097PF	5"	4"	3/4"	1"
CF098PF	5"	4"	1/2"	1"
CF099PF	5"	4"	1"	1"

Curb and Gutter Tools

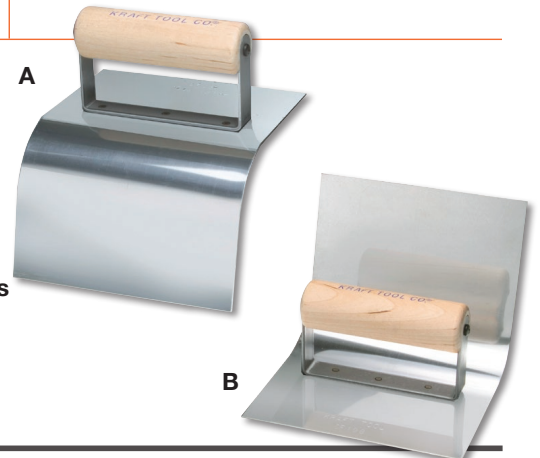
- Heavy-gauge stainless steel and rivet free
- Lip extends 3-1/2"

A) Curb Tool

Wood No.	ProForm® No.	Length	Width	Radius
CF197	CF197PF	6"	5"	1-1/2"
CF193	CF193PF	6"	5"	2"
CF195	CF195PF	6"	5"	3"

B) Gutter Tool

Wood No.	ProForm® No.	Length	Width	Radius
CF198	CF198PF	6"	4-1/2"	1-1/2"
CF196	CF196PF	6"	4-1/2"	2"
CF194	CF194PF	6"	4-1/2"	3"



Sidewalk and Curb Tools

Stainless Steel

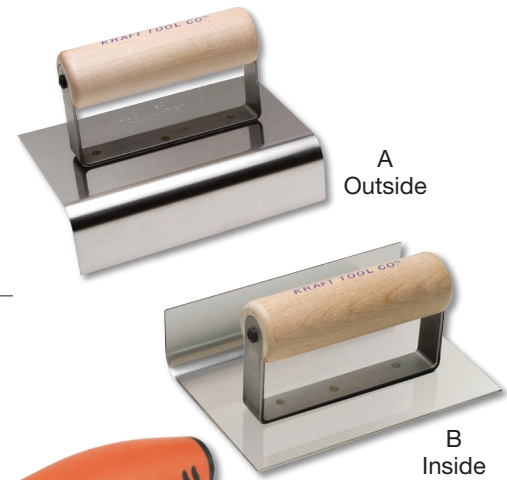
A) Outside Nose Tool

Wood No.	ProForm® No.	Size	Radius	Lip
CF146	CF146PF	6"x4"	1/2"	1-1/2"
CF147	CF147PF	6"x4"	3/4"	1-1/2"
CF148	CF148PF	6"x4"	1"	1-1/2"
CF243	CF243PF	6"x4"	1-1/2"	2"
CF244	CF244PF	6"x6"	1/2"	1-1/2"
CF245	CF245PF	6"x6"	3/4"	1-1/2"
CF247	CF247PF	6"x6"	1"	1-1/2"
CF242	CF242PF	6"x6"	1-1/2"	2"

B) Inside Cove Tool

Wood No.	ProForm® No.	Size	Radius	Lip
CF157	CF157PF	6"x4"	1/2"	1-1/2"
CF152	CF152PF	6"x4"	3/4"	1-1/2"
CF153	CF153PF	6"x4"	1"	1-1/2"
CF248	CF248PF	6"x6"	1/2"	1-1/2"
CF249	CF249PF	6"x6"	3/4"	1-1/2"
CF250	CF250PF	6"x6"	1"	1-1/2"

See Elite Series™ Sidewalk and Curb Tools on page 52



Step and Corner Tools

Stainless Steel

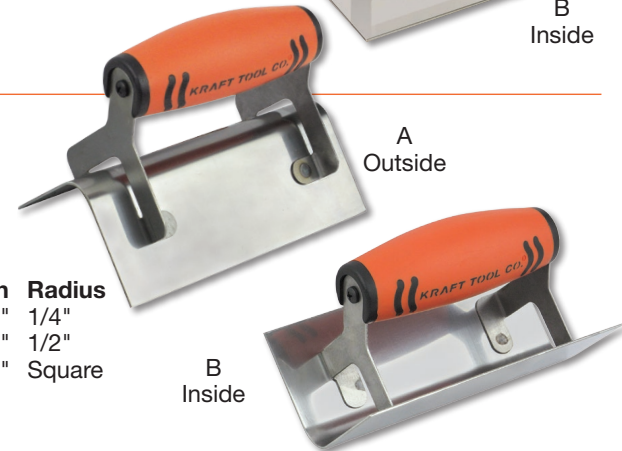
A) Outside Nose Tool

Wood No.	ProForm® No.	Length	Width	Radius
CF125	CF125PF	6"	2-1/2"	1/4"
CF123	CF123PF	6"	2-1/2"	1/2"
CF121	CF121PF	6"	2-1/2"	Square

B) Inside Cove Tool

Wood No.	ProForm® No.	Length	Width	Radius
CF126	CF126PF	6"	2-1/2"	1/4"
CF124	CF124PF	6"	2-1/2"	1/2"
CF122	CF122PF	6"	2-1/2"	Square

See Elite Series™ Step and Corner Tools on page 52

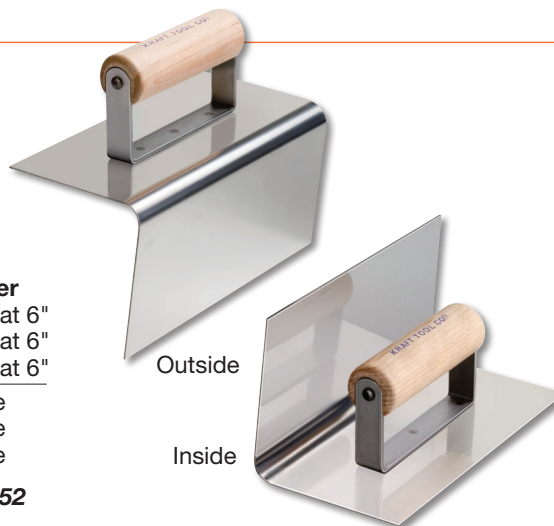


Step Tools

Stainless Steel

- Inside and outside step tools, available individually or as a matched pair
- 8"x4" with 1/2" radius and 4" lip

Wood No.	ProForm® No.	Description	Batter
CF177	CF177PF	Inside Tool	1/2" at 6"
CF178	CF178PF	Outside Tool	1/2" at 6"
CF179	CF179PF	Matched Pair	1/2" at 6"
CF180	CF180PF	Inside Tool	None
CF181	CF181PF	Outside Tool	None
CF182	CF182PF	Matched Pair	None



See Elite Series™ Step Tools on page 52

Two Radius Edger

- Stainless Steel 6"x6" edger with two radiuses (1-1/2" and 3/8" Radius)
- Fitted with our ProForm® handle

No. CF606PF



Curb and Gutter Walking Tool

- Heavy-gauge stainless steel is rivet free
- Fitted with 360 degree all-angle bracket
- Includes 5' wood clevis handle (CC386)
- Matching Hand Tool available

6" Length (1-1/2" Batter at 6")

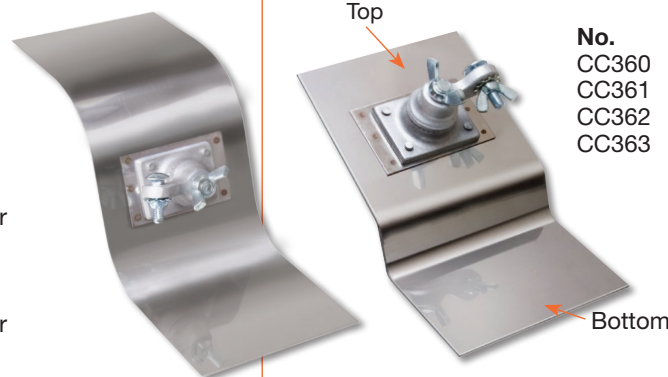
No.	Size
CC961	4-1/4" Top, 6" Face, 4" Bottom, 1-1/2" Radius Curb / Gutter

6" Length (2" Batter at 6")

No.	Size
CC962	6" Top, 6" Face, 6" Bottom, 2" Radius Curb, 3" Radius Gutter

6" Length (2" Batter at 6")

No.	Size
CC553	6" Top, 6" Face, 6" Bottom 3" Radius Curb, 2" Radius Gutter



Add "01" after part no. for tool without handle

Walking Driveway Approach Tool

- Heavy-gauge stainless steel is rivet free
- Fitted with 360 degree all-angle bracket
- Includes 5' wood clevis handle (CC386)

No.	Top Size	Bottom Width	Radius	Drop
CC360	6"x6"	4"	1/2"	1"
CC361	6"x6"	6"	1/2"	1"
CC362	6"x6"	4"	3/4"	1"
CC363	6"x6"	6"	3/4"	1"

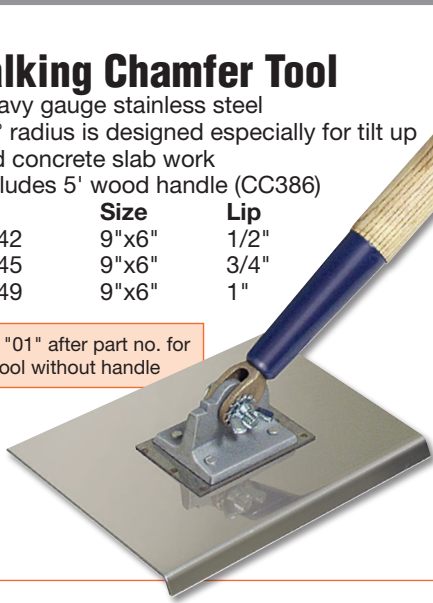
Add "01" after part no. for tool without handle

Walking Chamfer Tool

- Heavy gauge stainless steel
- 45° radius is designed especially for tilt up and concrete slab work
- Includes 5' wood handle (CC386)

No.	Size	Lip
CC342	9"x6"	1/2"
CC345	9"x6"	3/4"
CC349	9"x6"	1"

Add "01" after part no. for tool without handle

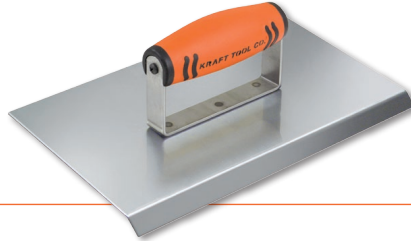


STAINLESS STEEL CHAMFER TOOLS

Single Lip Chamfer Tool

- Heavy gauge stainless steel
- Lip is placed at a 45° angle

Wood No.	ProForm® No.	Size	Lip
CF132	CF132PF	10"x6"	1/2"
CF134	CF134PF	10"x6"	3/4"



Stainless Steel Wall Edger

Wall edger fits between wall forms and smooths the surface. Ends turned up 45° to create cove. Heavy-gauge stainless steel and fitted with ProForm® handle. Blade measures 7-1/2"x8" with 1-1/8" lip.

No. CF661PF



Stainless Steel Edger With Float Handle

- Heavy gauge rivet-free stainless steel
- Designed to fit exact contour of edge

Wood No.	ProForm® No.	Size	Radius
CF900	CF900PF	10"x6"	1/4"
CF901	CF901PF	10"x6"	3/8"
CF902	CF902PF	10"x6"	1/2"
CF903	CF903PF	10"x6"	5/8"
CF904	CF904PF	10"x6"	3/4"
CF905	CF905PF	10"x6"	1"



Wall Capping Tool

- High quality rivet-free stainless steel
- Ideal for rounding concrete on top of walls

Wood No.	ProForm® No.	Size	
CF520	CF520PF	9"x6-3/4"	(6" Wall)
CF521	CF521PF	9"x9"	(8" Wall)



90° Carpet Edger

- Heavy gauge rivet-free stainless steel
- Designed to fit exact contour of edge
- Lip angle is 90 degrees

Wood No.	ProForm® No.	Size	Lip
CF528	CF528PF	6"x3"	1/4"



Narrow Edger

Chamfer Edger

Carpet Edger

- Heavy gauge rivet-free stainless steel
- Designed to fit exact contour of edge
- Lip angle is 45 degrees

Wood No.	ProForm® No.	Size	Lip
CF089	CF089PF	6"x3"	3/16"
CF090	CF090PF	6"x4"	3/16"
CF091	CF091PF	6"x6"	3/16"



Heavy-Duty Steel Edger #7

- Made of long lasting #12 gauge steel
- Designed to fit exact contour of edge
- A favorite of the professional edger in the Great Lakes Region

Wood No.	ProForm® No.	Size	Radius
CF527	CF527PF	8"x2"	3/8"



Stainless Steel Narrow Edger

- Heavy gauge rivet-free stainless steel
- Perfect for narrow or hard-to-get-at finishing jobs

Wood No.	ProForm® No.	Size	Radius
CF111	CF111PF	1"x6"	1/4"
CF113	CF113PF	1"x6"	3/8"
CF114	CF114PF	1"x6"	1/2"
CF120	CF120PF	1"x6"	3/4"

Stainless Steel Chamfer Edger

Wood No.	ProForm® No.	Size	Lip
CF199	CF199PF	1"x6"	3/4"

Tapered Hand Edger

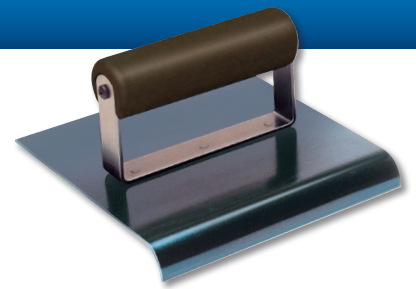
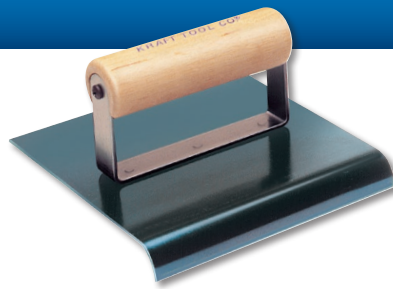
Made of heavy gauge stainless steel to work in all-angle corners. 4" wide edger is tapered for ease of movement and fitting odd angles.

Wood No.	ProForm® No.	Size	Radius	Lip
CF151	CF151PF	Tapered 8" to 3"	3/8"	1/2"
CF156	CF156PF	Tapered 8" to 3"	1/2"	5/8"



FLEXIBLE BLUE STEEL EDGERS

- Tempered blue crucible spring steel
- Flexible lightweight blade
- "Gives" for just the right feel when working
- 3 solid rivets



Blue Steel Edgers With ProForm® Handle

No.	Size	Radius
CF566PF	6"x3"	1/8"
CF568PF	6"x3"	1/4"
CF569PF	6"x3"	3/8"
CF570PF	6"x3"	1/2"
CF565PF	6"x3"	3/4"
CF567PF	6"x4"	1/8"
CF572PF	6"x4"	1/4"
CF573PF	6"x4"	3/8"
CF574PF	6"x4"	1/2"
CF562PF	6"x4"	5/8"
CF571PF	6"x4"	3/4"
CF675PF	6"x4"	1"
CF670PF	6"x5-1/2"	1/8"
CF671PF	6"x5-1/2"	1/4"
CF672PF	6"x5-1/2"	3/8"
CF673PF	6"x5-1/2"	1/2"
CF674PF	6"x5-1/2"	3/4"
CF579PF	6"x6"	1/8"
CF575PF	6"x6"	1/4"
CF576PF	6"x6"	3/8"
CF577PF	6"x6"	1/2"
CF563PF	6"x6"	5/8"
CF578PF	6"x6"	3/4"
CF564PF	6"x6"	1"
CF677PF	9"x4"	1/4"
CF595PF	9"x6"	1/4"
CF596PF	9"x6"	3/8"
CF597PF	9"x6"	1/2"
CF598PF	9"x6"	3/4"

Blue Steel Edgers With Wood Handle

No.	Size	Radius
CF566	6"x3"	1/8"
CF568	6"x3"	1/4"
CF569	6"x3"	3/8"
CF570	6"x3"	1/2"
CF565	6"x3"	3/4"
CF567	6"x4"	1/8"
CF572	6"x4"	1/4"
CF573	6"x4"	3/8"
CF574	6"x4"	1/2"
CF562	6"x4"	5/8"
CF571	6"x4"	3/4"
CF675	6"x4"	1"
CF670	6"x5-1/2"	1/8"
CF671	6"x5-1/2"	1/4"
CF672	6"x5-1/2"	3/8"
CF673	6"x5-1/2"	1/2"
CF674	6"x5-1/2"	3/4"
CF579	6"x6"	1/8"
CF575	6"x6"	1/4"
CF576	6"x6"	3/8"
CF577	6"x6"	1/2"
CF563	6"x6"	5/8"
CF578	6"x6"	3/4"
CF564	6"x6"	1"
CF677	9"x4"	1/4"
CF595	9"x6"	1/4"
CF596	9"x6"	3/8"
CF597	9"x6"	1/2"
CF598	9"x6"	3/4"

Blue Steel Edgers With Plastic Handle

No.	Size	Radius
CF566P	6"x3"	1/8"
CF568P	6"x3"	1/4"
CF569P	6"x3"	3/8"
CF570P	6"x3"	1/2"
CF565P	6"x3"	3/4"
CF567P	6"x4"	1/8"
CF572P	6"x4"	1/4"
CF573P	6"x4"	3/8"
CF574P	6"x4"	1/2"
CF562P	6"x4"	5/8"
CF571P	6"x4"	3/4"
CF675P	6"x4"	1"
CF670P	6"x5-1/2"	1/8"
CF671P	6"x5-1/2"	1/4"
CF672P	6"x5-1/2"	3/8"
CF673P	6"x5-1/2"	1/2"
CF674P	6"x5-1/2"	3/4"
CF579P	6"x6"	1/8"
CF575P	6"x6"	1/4"
CF576P	6"x6"	3/8"
CF577P	6"x6"	1/2"
CF563P	6"x6"	5/8"
CF578P	6"x6"	3/4"
CF564P	6"x6"	1"
CF677P	9"x4"	1/4"
CF595P	9"x6"	1/4"
CF596P	9"x6"	3/8"
CF597P	9"x6"	1/2"
CF598P	9"x6"	3/4"

Blue Crucible Steel Curb and Step Tools

- Made of blue crucible spring steel
- Provides just the right feel and flex for a professional finish

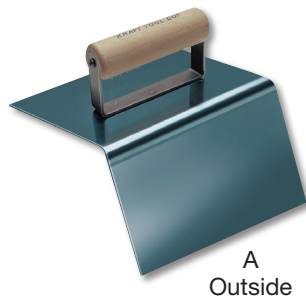
A) Curb Tool - Outside

- Measures 9"x5"

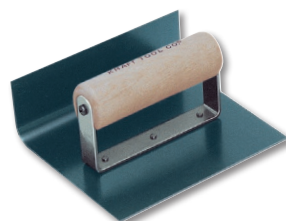
Wood	ProForm®	No.	Lip	Radius	Batter
		CF580	5"	1/2"	1-1/2" at 6"
		CF581	5"	3/4"	1-1/2" at 6"

B) Step Tool - Inside

Wood	ProForm®	No.	No.	Size	Lip	Radius
		CF515	CF515PF	6"x4"	3"	1"
		CF516	CF516PF	6"x6"	3"	1"



A
Outside

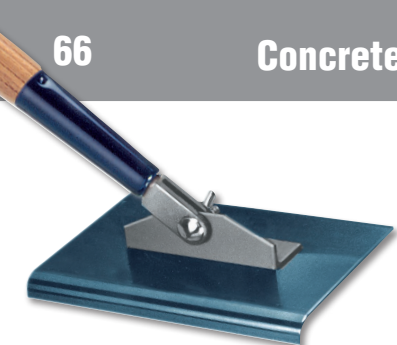


B
Inside

Blue Steel Pool Trowels and Finishing Trowels

Elite Series™ Trowels Page 5
Kraft Tool Signature Trowels Pages 8-12





Add "01" after part no. for edgers without handle

Two-Way Blue Steel Walking Edger

- The edger blade "gives" a little for just the right feel
- Bracket has special angle for increased tilt action
- Comes with 54" wood clevis handle (CC656)

No.	Size	Radius
CC390	9"x4"	1/4"
CC391	9"x4"	3/8"
CC392	9"x4"	1/2"
CC393	9"x6"	1/4"
CC394	9"x6"	3/8"
CC395	9"x6"	1/2"
CC396	9"x6"	3/4"
CC384	9"x8"	1/4"
CC385	9"x8"	3/8"
CC387	9"x8"	1/2"
CC388	9"x8"	3/4"

No.	Size	Radius
CC397	9"x10"	1/4"
CC398	9"x10"	3/8"
CC399	9"x10"	1/2"
CC400	9"x10"	3/4"
CC378	9"x12"	1/2"
CC401	9"x14"	1/4"
CC402	9"x14"	3/8"
CC403	9"x14"	1/2"
CC404	9"x14"	3/4"



Add "01" after part no. for edgers without handle

All-Angle Blue Steel Walking Edger With Swivel Bracket

- The edger blade "gives" a little for just the right feel
- Bracket rotates 360 degrees
- Comes with 54" wood clevis handle (CC656)

No.	Size	Radius
CC390A	9"x4"	1/4"
CC391A	9"x4"	3/8"
CC392A	9"x4"	1/2"
CC393A	9"x6"	1/4"
CC394A	9"x6"	3/8"
CC395A	9"x6"	1/2"
CC396A	9"x6"	3/4"
CC384A	9"x8"	1/4"
CC385A	9"x8"	3/8"
CC387A	9"x8"	1/2"
CC388A	9"x8"	3/4"

No.	Size	Radius
CC397A	9"x10"	1/4"
CC398A	9"x10"	3/8"
CC399A	9"x10"	1/2"
CC400A	9"x10"	3/4"
CC378A	9"x12"	1/2"
CC401A	9"x14"	1/4"
CC402A	9"x14"	3/8"
CC403A	9"x14"	1/2"
CC404A	9"x14"	3/4"



NEW

NEW

A
Cove Tool

B
Nose Tool

All-Angle Blue Steel Walking Cove and Nose Tools With Swivel Bracket

- Blade "gives" a little for just the right feel
- Swivel bracket rotates 360°
- Includes 54" wood clevis handle (CC656)
- Matching Cove and Nose Tools create steps and gutters

A) Walking Cove Tool

No.	Size	Lip	Radius
CC9080	6"x6"	6"	1/2"
CC9090	6"x6"	6"	3/4"

B) Walking Nose Tool

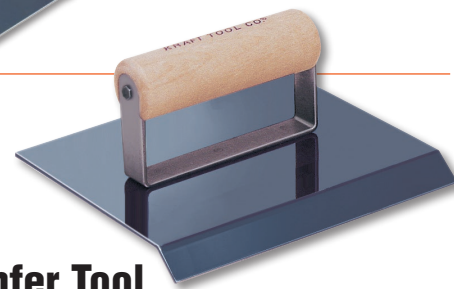
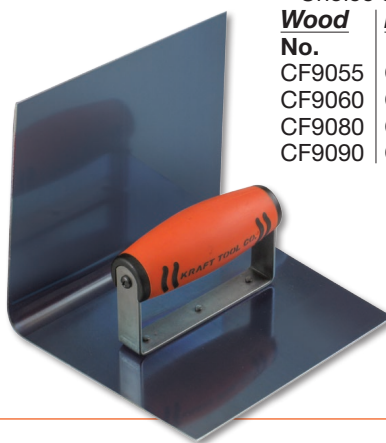
No.	Size	Lip	Radius
CC9040	6"x6"	6"	1/2"
CC9050	6"x6"	6"	3/4"

Add "01" after part no. for edgers without handle

Hand Cove Tool

- Blade "gives" a little for just the right feel
- Cove Tools for steps and gutters
- Choice of ProForm® or Wood Handles

Wood	ProForm®	No.	Size	Lip	Radius
		CF9055	6"x6"	6"	1/8"
		CF9060	6"x6"	6"	1/4"
		CF9080	6"x6"	6"	1/2"
		CF9090	6"x6"	6"	3/4"



Blue Steel Chamfer Tool

- Professional quality tool
- Formed to fit exact contour
- Lip is at a 45 degree angle

Wood	ProForm®	No.	Size	Lip
		CF773	6"x6"	3/4" NEW
		CF774	6"x6"	1" NEW
		CF523	6"x8"	3/4"
		CF594	9"x6"	3/4"
		CF775	9"x6"	1" NEW

Blue Crucible Steel Junior Step Tools

- Made of blue crucible spring steel
- Provides just the right feel and flex for a professional finish
- Purchase together or separately

A) Junior Step Tool - Outside

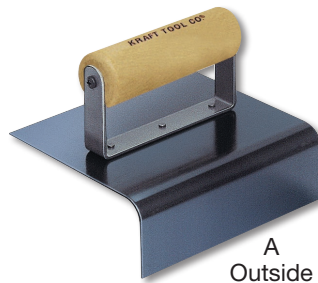
Wood No.	ProForm® No.	Size	Lip	Radius
CF517	CF517PF	6"x5"	2"	1/2"

B) Junior Step Tool - Inside

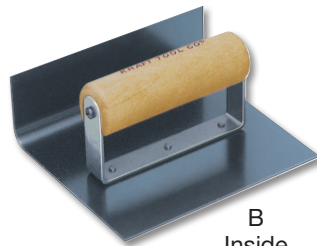
Wood No.	ProForm® No.	Size	Lip	Radius
CF518	CF518PF	6"x5"	2"	1/2"

Matched Pair

Wood No.	ProForm® No.	Size	Lip	Radius
CF519	CF519PF	6"x5"	2"	1/2"

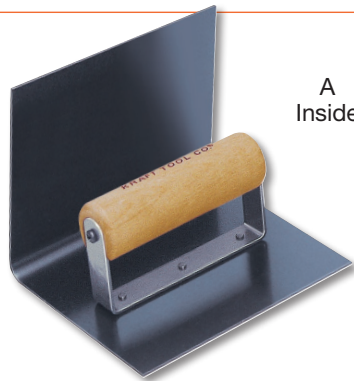


A
Outside

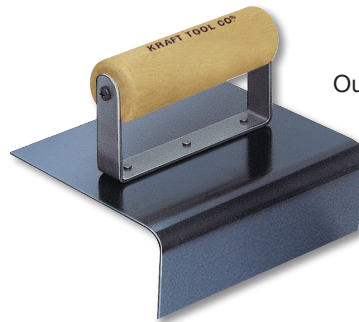


B
Inside

See Elite Series™ Blue Steel Junior Step Tools on page 54



A
Inside



B
Outside

Blue Crucible Steel Step Tools

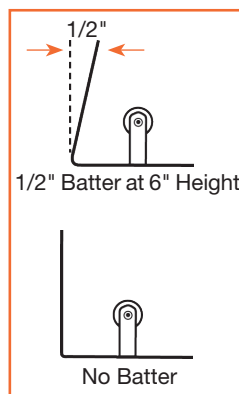
- Tempered blue crucible spring steel
- Tapered blade is very flexible and lightweight
- Available with or without batter

A) Inside Step Tool

Wood No.	ProForm® No.	Size	Lip	Radius	Batter
CF584	CF584PF	7"x6"	6"	1/4"	1/2" at 6"
CF760	CF760PF	7"x6"	6"	1/4"	None
CF585	CF585PF	7"x6"	6"	3/8"	1/2" at 6"
CF761	CF761PF	7"x6"	6"	3/8"	None
CF586	CF586PF	7"x6"	6"	1/2"	1/2" at 6"
CF762	CF762PF	7"x6"	6"	1/2"	None
CF587	CF587PF	7"x6"	6"	3/4"	1/2" at 6"
CF763	CF763PF	7"x6"	6"	3/4"	None
CF588	CF588PF	7"x6"	6"	1"	1/2" at 6"
CF764	CF764PF	7"x6"	6"	1"	None
CF766	CF766PF	7"x6"	6"	1-1/2"	None NEW

B) Outside Step Tool

Wood No.	ProForm® No.	Size	Lip	Radius	Batter
CF589	CF589PF	6"x6"	3-1/2"	1/4"	1/2" at 6"
CF767	CF767PF	6"x6"	3-1/2"	1/4"	None
CF590	CF590PF	6"x6"	3-1/2"	3/8"	1/2" at 6"
CF768	CF768PF	6"x6"	3-1/2"	3/8"	None
CF591	CF591PF	6"x6"	3-1/2"	1/2"	1/2" at 6"
CF769	CF769PF	6"x6"	3-1/2"	1/2"	None
CF592	CF592PF	6"x6"	3-1/2"	3/4"	1/2" at 6"
CF770	CF770PF	6"x6"	3-1/2"	3/4"	None
CF593	CF593PF	6"x6"	3-1/2"	1"	1/2" at 6"
CF771	CF771PF	6"x6"	3-1/2"	1"	None
CF772	CF772PF	6"x6"	3-1/2"	1-1/2"	None NEW



Narrow Clevis Handle

- Made to fit blue steel walking tools
- Narrow steel clevis

No.	Size
CC656	54"
CC656L	72"



Two-Way Blue Steel Walking Step Tools

- Tempered blue crucible spring steel
- Blade is very flexible and lightweight
- Includes heavy-duty 54" clevis handle (CC656)

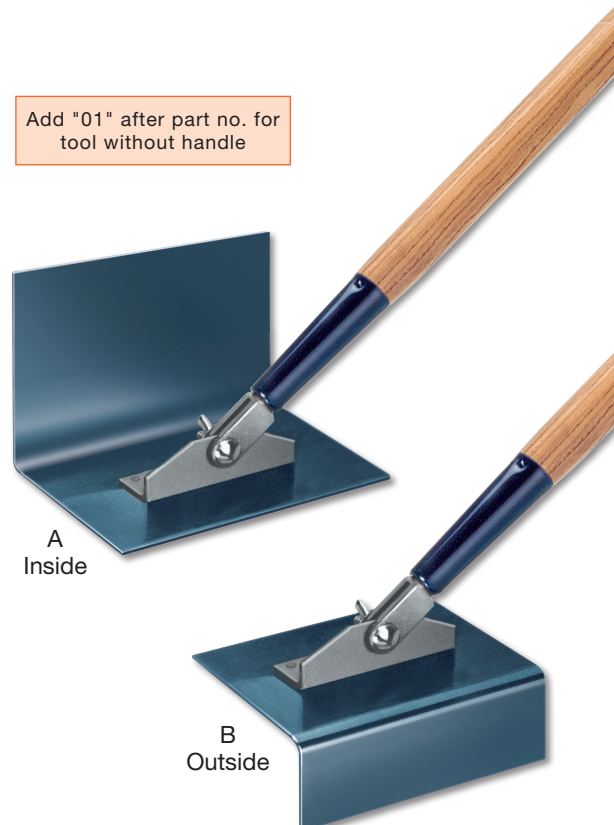
A) Inside Step Tool

No.	Size	Lip	Radius	Batter	
CC586	7"x6"	6"	1/2"	1/2" at 6"	NEW NEW NEW
CC762	7"x6"	6"	1/2"	None	
CC763	7"x6"	6"	3/4"	None	
CC764	7"x6"	6"	1"	None	

B) Outside Step Tool

No.	Size	Lip	Radius	Batter	
CC590	6"x6"	3-1/2"	3/8"	1/2" at 6"	NEW NEW NEW
CC591	6"x6"	3-1/2"	1/2"	1/2" at 6"	
CC770	6"x6"	3-1/2"	3/4"	None	
CC765	6"x6"	3-1/2"	1"	None	
CC772	6"x6"	3-1/2"	1-1/2"	None	

Add "01" after part no. for tool without handle



A
Inside

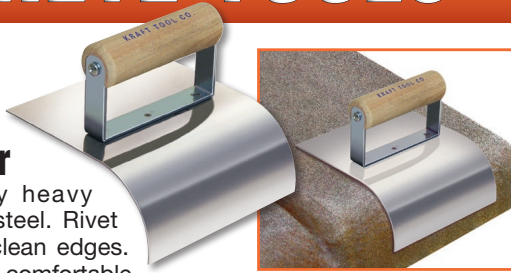
B
Outside

See Elite Series™ Blue Steel Step Tools on page 54

DECORATIVE CONCRETE TOOLS

Deco Hand Edger

Made of quality heavy gauge stainless steel. Rivet free for smooth clean edges. Fitted with smooth comfortable wood handle.



No.	Size	Radius	Lip
CF659	6"x6"	2"	2-1/2"

Deco Hand Groover

Made of quality heavy gauge stainless steel. Rivet free for smooth clean edges. Fitted with smooth comfortable wood handle.

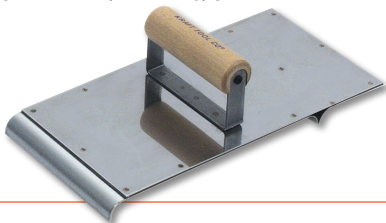


No.	Size	Radius	Bit Depth
CF660	6"x7-5/8"	1-1/2"	1-3/4"

Decorative Concrete Border Tool

An edger and groover in one! This high quality heavy gauge stainless steel tool creates a decorative border. Rivet free for clean grooves and edges. Fitted with comfortable wood handle.

No.	Spacing	Size	Radius	Bit
CF656	9"	6"x12"	1/2"	5/8"



Broadcast Gun

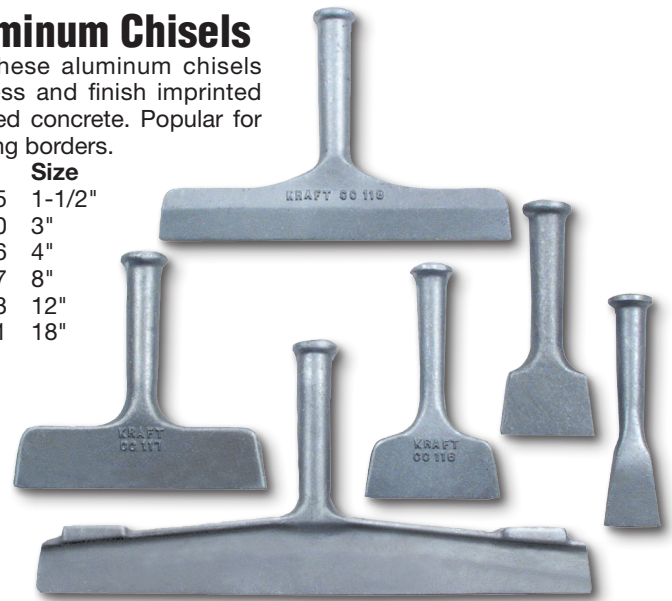
Easily broadcasts decorative vinyl color chips and fine materials. Use gun with compressor at approximately 15 P.S.I. Vinyl chips are distributed evenly on epoxy floor projects. Adjust compressor for desired spraying distance and vinyl chip density on floor.
No. PC801



Aluminum Chisels

Use these aluminum chisels to dress and finish imprinted textured concrete. Popular for creating borders.

No.	Size
CC115	1-1/2"
CC110	3"
CC116	4"
CC117	8"
CC118	12"
CC111	18"



Vibrating Screed

The vibrations on this tool levels and tamps at once to save time. The quick action of the screed vibrate allows the use of drier, stronger concrete. The Vibrating Screed is small and portable, easy to move from slab to slab and job site to job site. Wooden screeds up to 16' are recommended (sold separately, page 39). Can also be used with aluminum or magnesium screeds up to 20' (page 35). Includes a 20' electrical cord. Runs on 120v AC 50/60 HZ. 2.0 amps. Weighs 18 lb.
No. CC499



Plastic Step Tools

Special design for pool work. Clear plastic material will not mark or darken white coatings. Both sides are tapered for a smooth finish. Fitted with smooth comfortable wood handle.

A) Outside Nose Tool

No.	Size	Radius
PL653T	6"x5"	1/2"
PL652T	6"x5"	3/4"
PL650T	6"x5"	1"
PL654T	6"x5"	1-1/2"
PL651T	6"x5"	2"

B) Inside Cove Tool

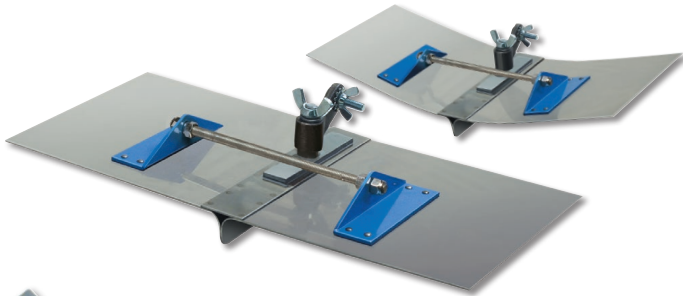
No.	Size	Radius
PL656T	6"x5"	1/2"
PL655T	6"x5"	3/4"
PL659T	6"x5"	1"
PL657T	6"x5"	1-1/2"
PL660T	6"x5"	2"



Adjustable Winged Groover

- Made of high quality heavy gauge stainless steel
- Professional quality tool designed to fit exact contours of edges
- Wings adjust up to fit contour of job
- Use with clevis handle (CC386) or adapter for bull float handles (pages 22-24). Handles and adapters ordered separately.

No.	Size	Bit Depth	Bit Width	Bit Radius
CC734	9"x20"	1-1/4"	1"	1/2"



Straight Arrow Hand Groover

Made of high grade aluminum. Hand groover is designed to cut straight control joints. Use in conjunction with walking groovers. Fitted with comfortable ProForm® float handle. Groover length 12" with a 4" wide top for greater stability.

No.	Radius	Bit Depth	Bit Width
CC012PF-125	1/4"	1-1/4"	1/4"
CC012PF-150	1/4"	1-1/2"	1/4"
CC012PF-175	1/4"	1-3/4"	1/4"



Double End Deco "V" Jointer

Jointer is made of high quality aluminum. Use in conjunction with texture mats for touch up or cutting of small grooves. Groover designed to cut 5/8" or 3/4" joints. A must tool for every finisher.

No.	Size	Description
CC112	12"	"V" Jointer (5/8" x 3/4")

Straight Arrow Groover for Control Joints

Ideal tool for cutting long straight control joints

These high-grade aluminum groovers are designed to cut long straight control joints. The design features a 4" wide top, providing greater stability. The bolted sight marker can move along the center channel to help cut perfectly long straight control joints. Serrated bit moves aggregate within the groove for stronger concrete. The adjustable bracket assembly slides on a center track for preferential placement. Use with clevis handle (page 58) or bull float handle with adapter (sold separately, page 22-24).

A) Straight Bit

No.	Size	Bit Depth	Bit Width
CC006W-125	24"	1-1/4"	1/4"
CC006W-150	24"	1-1/2"	1/4"
CC006W-175	24"	1-3/4"	1/4"
CC003W-125	36"	1-1/4"	1/4"
CC003W-150	36"	1-1/2"	1/4"
CC003W-175	36"	1-3/4"	1/4"
CC004W-125	48"	1-1/4"	1/4"
CC004W-150	48"	1-1/2"	1/4"
CC004W-175	48"	1-3/4"	1/4"
CC005W-125	60"	1-1/4"	1/4"
CC005W-150	60"	1-1/2"	1/4"
CC005W-175	60"	1-3/4"	1/4"

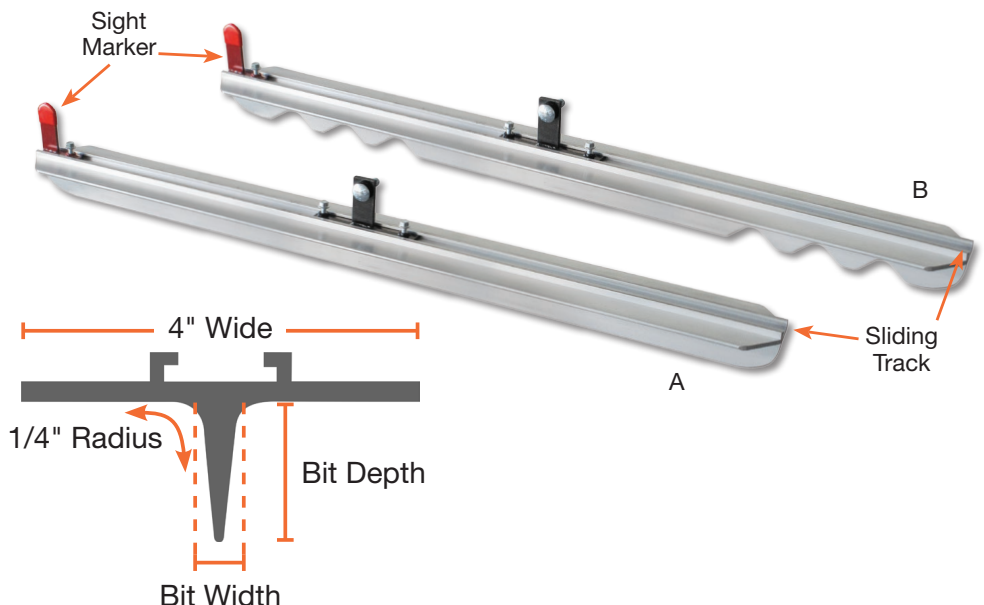
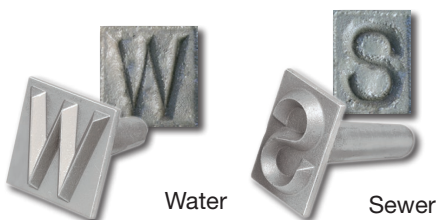
B) Serrated Bit

No.	Size	Bit Depth	Bit Width
CC006WS-125	24"	1-1/4"	1/4"
CC006WS-150	24"	1-1/2"	1/4"
CC006WS-175	24"	1-3/4"	1/4"
CC003WS-125	36"	1-1/4"	1/4"
CC003WS-150	36"	1-1/2"	1/4"
CC003WS-175	36"	1-3/4"	1/4"
CC004WS-125	48"	1-1/4"	1/4"
CC004WS-150	48"	1-1/2"	1/4"
CC004WS-175	48"	1-3/4"	1/4"
CC005WS-125	60"	1-1/4"	1/4"
CC005WS-150	60"	1-1/2"	1/4"
CC005WS-175	60"	1-3/4"	1/4"

Utility Stamps

Stamp concrete with locations of water and sewer lines. 3" tall letters made of long-wearing cast aluminum. Large 4-3/4" handle can be used by hand or with mallet.

No.	Description
CF405	Water Utility Stamp
CF403	Sewer Utility Stamp



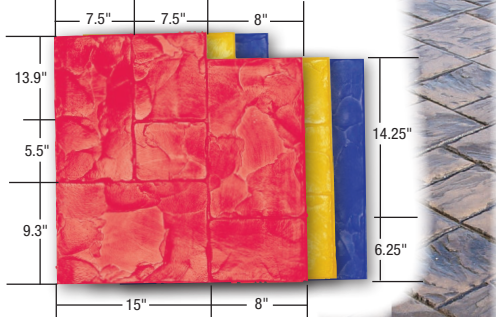
Wood and Canvas-Resin Bull Floats
Page 29

Wood and Canvas-Resin Hand Floats
Pages 15, 17, and 107

DECORATIVE TEXTURE MATS

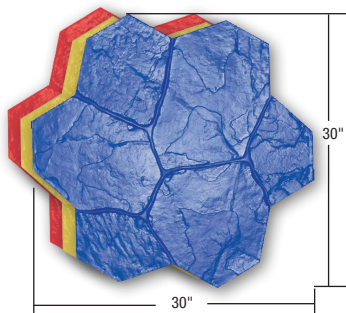
Decorative texture mats create a three dimensional impression on the concrete with all details of the shape, texture and feel of natural stone or brick. An excellent alternative to brick or tile for patios, driveways, walkways, poolside decking and many other applications. Mats are made of 3/4" thick polyurethane.

Ashlar Cut Slate



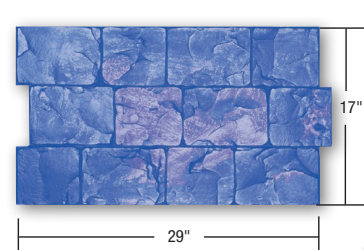
Ashlar Cut Slate
CC140 Weight: 13 lbs.
CC565 1/4" Round Face Roller

Random Stone



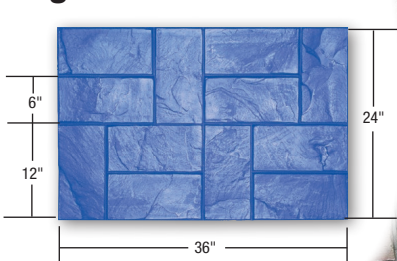
Random Stone
CC143 Weight: 16 lbs.
CC566 3/16" Flat Face Roller

London Cobble



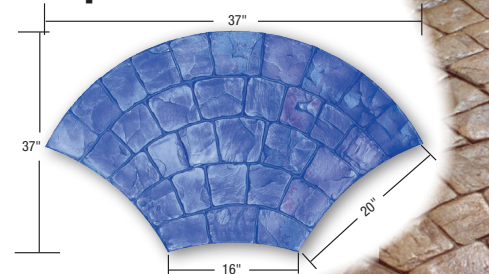
London Cobble
CC142 Weight: 13 lbs.
CC565 1/4" Round Face Roller

England Basket Weave



England Basket Weave
CC139 Weight: 20 lbs.
CC569 1/2" Wedge Roller

European Fan

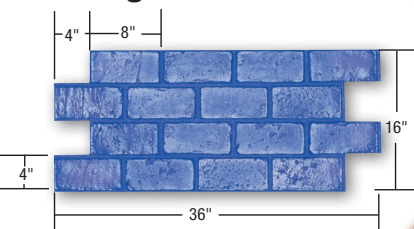


European Fan
CC141 Weight: 20 lbs.
CC566 3/16" Flat Face Roller

Red, Yellow and Blue Mats: Some texture mats are offered in Red, Yellow or Blue. These mats are the same texture but have different configurations to avoid seeing repeat patterns. Alternating Red, Yellow and Blue mats when available is recommended.

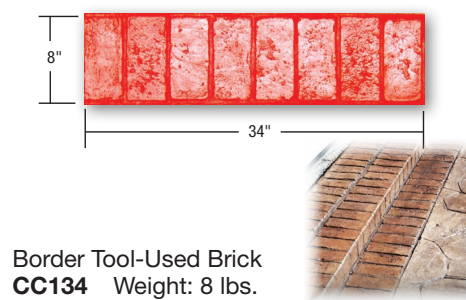
Floppy Texture Mats: All of the texture mats above are available in Floppy Texture Mats. Half the weight and half the thickness of regular texture mats. Very flexible, great for touch-ups, detail work and hard-to-reach areas such as walls and stairs. ADD "F" to Texture Mat part numbers for floppy mat.

Running Bond-Used Brick



Running Bond-Used Brick
CC147 Weight: 14 lbs.
CC568 3/8" Sanded Face Roller

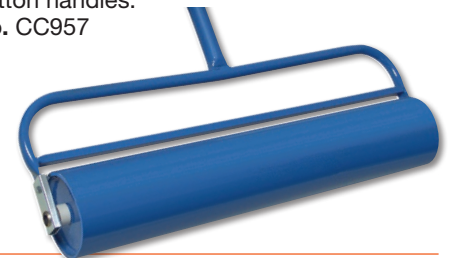
Border Tool-Used Brick



Border Tool-Used Brick
CC134 Weight: 8 lbs.
CC568 3/8" Sanded Face Roller

Salt Roller

30" long decorative salt roller. Make small decorative impressions in concrete using rock salt. Use with 1-3/8" diameter snap button handles.
No. CC957



Joint Touch-Up Rollers

Super Flexible

Joint roller used for touching up joints when using texture mats. Match texture and width of existing joints.

No.	Face Size	Face Type
CC566*	3/16"	Flat
CC565*	1/4"	Round
CC567*	3/8"	Flat
CC568*	3/8"	Sanded
CC569*	1/2"	Wedge
CC570*	1/2"	Flat
CC571*	1/2"	Sanded



Texture Guns / Hoppers and Compressor Unit

EZY Deck Pro

Gun and Hopper (shown)

- Sprays overlay and decking material
- Built-in downward hopper angle ideal for decks and floors with flexible neck
- Complete compressor unit available

See more on page 143



Kraft Texture Skins

Super Flexible

Kraft Texture Skins are used by overlapping and gives the concrete a stone or slate texture. Skins can also be used for touch-ups and in conjunction with other texture mats.

No.	Description	Approx. Size
A) CC001	Stone Texture	24"x36"
B) CC002	Slate Texture	24"x36"



Kraft Rough Stone Texture Skins

Super Flexible

Texture Skins are used by overlapping and gives the concrete a rough stone texture. Skins can also be used for touch-ups etc. The back side of texture skin is fitted with two handles. Feathered edges.

No.	Approx. Size
CC007	36"x36"
CC008	56"x56"

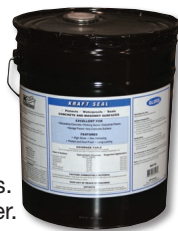


Concrete Sealer

Solvent-based sealer to protect and enhance concrete surfaces. Apply with sprayer. 5 Gallons.

No.	Finish
RR176**	High Gloss
RR178**	Satin

**Must ship via truck



Liquid Release

Easy to apply with sprayer. Forms lubricating barrier between concrete and mats. Use on colored or uncolored concrete. Alternative to powdered release agents. 5 Gallons.

No. RR175**

**Must ship via truck



Curing Compound Sprayer With Wand

Spray cement curing compound, release agents, cleaners, and more. Epoxy-coated inside and out resists corrosion from harsh chemicals. The ribbed container provides additional strength. The 2' wand includes 2 brass nozzles for thick or thin material. Top has a funnel top for quicker fills without spills. 4' heavy-duty solvent resistant Goodyear® hose. 3.5 gallon capacity.

No.	Description
RR164	Sprayer with Wand
RR164-02	Repl. Wand and Tip

Color Release Agents & Color Hardener For Kraft Texture Mats

Dry Powder Release Agent

These are recommended for use with texture mats. The release agents keep material from sticking to mat. The rate of coverage will vary depending upon the depth of the texture mat impressions desired and the degree to which the concrete has set.

- 3.5 lbs. per 100 sq. ft. or more may be required.
- Covers approximately 800 - 1,000 Sq. Ft. Available in five (5) gallon containers. (Shipping weight 33 lbs.)

Color Hardener

Hardener is used for coloring flatwork and is often used with antique release agents in the texturing of concrete. Use a wood float to float color hardener into the material before troweling.

- 60 lb. pail covers approximately 100 square feet. (Shipping weight 63 lbs.)



CAUTION: Always use safety goggles and dust mask, when using color release agents and color hardener.

Color Release & Hardener

Release No.	Hardener No.	Description	
RA100	CH100	Dark Gray	
RA200	CH200	Medium Gray	
RA300	CH300	Nutmeg Tan	
RA310	CH310	Cream Beige	
RA320	CH320	Golden Sandstone	
RA325	CH325	Sandstone	
RA350	CH350	Desert Tan	
RA375	CH375	Buff Tan	
RA400	CH400	Chestnut Brown	
RA425	CH425	Autumn Brown	
RA525	CH525	Dusty Rose	
RA550	CH550	Brick Red	
RA600	CH600	Light Gray	
RA700	CH700	Terra-cotta	
RA735	CH735	Cappuccino	
RA810	CH810	Walnut	
RA900	CH900	Jet Black	
RA1090	CH1090	Sun Buff	

Note: Colors shown above approximate the appearance of Color Hardener and Release Agent. Variations are to be expected due to jobsite conditions and finishing techniques. Contact your distributor for more information. Additional color charts available upon request.

Plastic Bucket and Pail

Durable 90 mil 5 gallon translucent bucket and 10 quart pail for general uses such as mixing or moving various materials. Lid for 5 gallon bucket sold separately.

5 Gal. Plastic Bucket

Liters, Quarts, Gallons measurements

No.	Description
GG468	5 Gal. Plastic Bucket
GG468-01	Plastic Lid (For GG468 5 Gal. Bucket)
GG468-02	Plastic Lid with Spout (For GG468 5 Gal. Bucket)

10 Qt. Plastic Pail

Ounces, Liters, Quarts measurements

No.	Description
GG470	10 Qt. Plastic Pail

Bucket Dolly

No. ST379

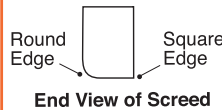


28" Countertop Darby

Smooth and level concrete countertops with this lightweight magnesium countertop darby. The base of the tool has a rounded edge for floating and a square edge for cutting or finishing. Wooden knob and rib handle give perfect control.

No.	Size
CC898	28"x1-3/8"x2"

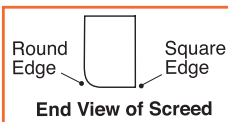
GENUINE EXTRU-LITE
MAGNESIUM



40" Buckaroo™ Straightedge

Small size makes this tool ideal for finishing concrete island countertops. The base of the tool has a rounded edge for floating and a square edge for cutting or finishing. Smooth 3-hole wooden handle includes adjustable top-reading level vial.

No.	Size
CC897	40"x1-3/8"x2"



GENUINE EXTRU-LITE
MAGNESIUM



Adjustable Level Vial



Dual Cartridge Epoxy Gun

Easy to pull and release trigger for dispensing two component materials through static mixers. Dispensing rods are hardened for long wear and strength.

No.	Size
GG469*	300 mL x 300 mL



Flexible Blue Steel Bent Blade Smoother

The 24" flexible blue steel blade is bent to provide maximum blade contact for surface coating materials. Ideal for overlays, underlays, and other cement based materials. A threaded bracket works with any broom thread handle. Includes 3-piece, 5 foot aluminum handle (CC263).

No.	Description
GG608	Smoother with 3-Piece Handle
GG608-01	Smoother without Handle

Blue Steel Smoother

Smoother's 24" blue steel flexible blade with aluminum mounting spreads material evenly. Use to smooth overlays, epoxies and coating materials when you need a thin consistent finish. Includes 3-piece, 5 foot aluminum handle (CC263).

No.	Description
GG607	Smoother with 3-Piece Handle
GG607-01	Smoother without Handle



Self Leveling Pins

A popular solution for measuring when surfaces are inconsistent. Cut down the plastic pin to desired height and place around the floor. Adhesive strip secures to substrate. When the material is poured to top of the pins will blend in the with material. Measures up to 4" deep with graduations in 1/8" and mm.

No.	Description
GG240*	Pack of 100