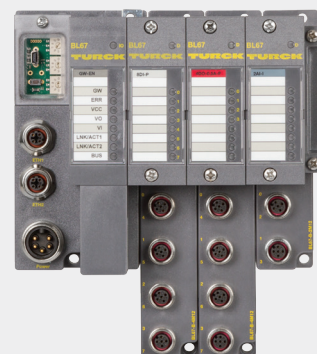


Your Global Automation Partner

TURCK

Readily Available In-Stock Program



A Global Leader in Industrial Automation

Turck's sensors, connectivity and fieldbus technology products are built to be the **best**. As one of the most **prominent** sensor manufacturers **in the world**, we even back our sensors with a **lifetime warranty**. Turck works by bringing **rugged engineering** solutions to your industrial automation applications.

85,000+
SOLUTIONS

50+
YEARS OF INNOVATION

2,000+
EXPERIENCED SALES REPRESENTATIVES

Pioneer in non-contact
sensing technology

Developed innovative **connectivity**
solutions in response to our customers' needs

Recognized the need for advanced **I/O solutions**
in harsh duty environments

**SUPPORT &
DEDICATED SERVICE**

EXTENSIVE WARRANTY



4,000+
APPLICATION EXPERTS

RESPOND
and SOLVE over **1,200** inquiries
per day



Strategically placed manufacturing facilities in the

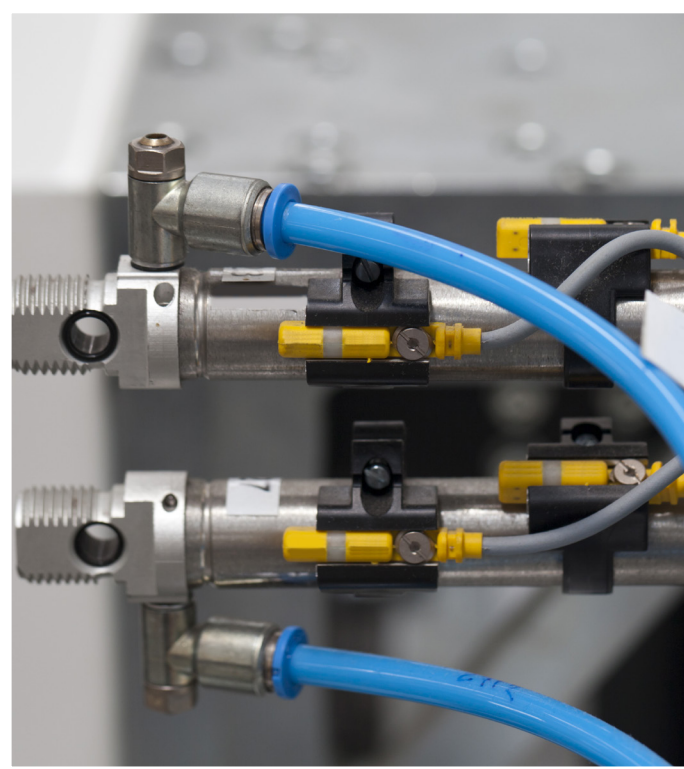
USA with **28** GLOBAL
SUBSIDIARIES

GLOBAL BUT LOCAL...

60 representations worldwide

Content

1. Sensors	
Inductive	5
Magnetic	10
Capacitive	11
Flow	14
Pressure	15
Temperature	17
Linear Position	19
Angular Position	20
Rotary Position	21
2. Connectivity	
M8 Picofast	25
M12 Eurofast	27
7/8" Minifast	33
M12 Eurofast Junction Boxes	36
M23 Multifast	37
Splitters	38
Ethernet	39
DeviceNet	41
Valve Plugs Type	42
A-size Powerfast	45
D-size Powerfast	46
3. Fieldbus Technology	
Block I/O	51
Modular I/O	52
Ethernet Switch	53
Power Supplies	53



Sensors

As one of the world's leading suppliers of proximity, measurement, monitoring and position sensors, Turck has the products and expertise to help you engineer customized solutions for the most challenging applications. Our robust product offering includes more than 5,000 proximity sensors based on inductive, capacitive, or magnetic principals of operation, along with ultrasonic, flow, linear and rotary position sensors designed for use in a wide variety of industries.

Our In-Stock product offering provides an easy and efficient way to acquire some of the most commonly used sensing solutions that Turck offers, allowing customers to get what they need, when they need it.

Turck's In-Stock Product offering includes:

- Inductive
- Magnetic
- Capacitive
- Flow
- Pressure
- Temperature
- Linear Position
- Angular Position
- Rotary Position

Sensors | Inductive

4 mm Smooth Barrel, 3-wire DC



Operating voltage: 10-30 VDC
 Short circuit protection
 Reverse polarity protection
 Stainless steel barrel
 Output: normally open

Product ID	Product Description	Special Feature	Switching Distance	Embeddable vs Non-embeddable	Connection	Output Function	Dimensions	Switching Freq.	Ambient Temp.
S4608540	BI 1-EH04-AN6X-V1331	-	1 mm	Embeddable	male, M8 x 1	NPN	4x42 mm	3 kHz	-25 °C to +70 °C
S4608440	BI 1-EH04-AP6X-V1331	-	1 mm	Embeddable	male, M8 x 1	PNP	4x42 mm	3 kHz	-25 °C to +70 °C
S4602115	BI 1U-EH04-AN6X-V1331	Uprox3	1 mm	Embeddable	male, M8 x 1	NPN	4x42 mm	2 kHz	-25 °C to +70 °C
S4602113	BI 1U-EH04-AP6X-V1331	Uprox3	1 mm	Embeddable	male, M8 x 1	PNP	4x42 mm	2 kHz	-25 °C to +70 °C

5 mm Barrel, 3-wire DC



Operating voltage: 10-30 VDC
 Short circuit protection
 Reverse polarity protection
 Stainless steel barrel
 Output: normally open

Product ID	Product Description	Special Feature	Switching Distance	Embeddable vs Non-embeddable	Connection	Output Function	Dimensions	Switching Freq.	Ambient Temp.
S4608740	BI 1-EG05-AN6X-V1331	-	1 mm	Embeddable	male, M8 x 1	NPN	5x42 mm	3 kHz	-25 °C to +70 °C
S4608640	BI 1-EG05-AP6X-V1331	-	1 mm	Embeddable	male, M8 x 1	PNP	5x42 mm	3 kHz	-25 °C to +70 °C
S4602119	BI 1U-EG05-AN6X-V1331	Uprox3	1 mm	Embeddable	male, M8 x 1	NPN	5x42 mm	2 kHz	-25 °C to +70 °C
S4602117	BI 1U-EG05-AP6X-V1331	Uprox3	1 mm	Embeddable	male, M8 x 1	PNP	5x42 mm	2 kHz	-25 °C to +70 °C

8 mm Barrel, 3-wire DC



Operating voltage: 10-30 VDC
 Short circuit protection
 Reverse polarity protection
 Stainless steel barrel
 Output: normally open

Product ID	Product Description	Special Feature	Switching Distance	Embeddable vs Non-embeddable	Connection	Output Function	Dimensions	Switching Freq.	Ambient Temp.
S4602140	BI 2-EG08-AN6X	-	2 mm	Embeddable	2 m cable	NPN	8x40 mm	3 kHz	-25 °C to +70 °C
S4602160	BI 2-EG08-AN6X-H1341	-	2 mm	Embeddable	male, M12 x 1	NPN	8x57 mm	3 kHz	-25 °C to +70 °C
S4602150	BI 2-EG08-AN6X-V1131	-	2 mm	Embeddable	male, M8 x 1	NPN	8x49 mm	3 kHz	-25 °C to +70 °C
S4602040	BI 2-EG08-AP6X	-	2 mm	Embeddable	2 m cable	PNP	8x40 mm	3 kHz	-25 °C to +70 °C
S4602060	BI 2-EG08-AP6X-H1341	-	2 mm	Embeddable	male, M12 x 1	PNP	8x57 mm	3 kHz	-25 °C to +70 °C
S4602050	BI 2-EG08-AP6X-V1131	-	2 mm	Embeddable	male, M8 x 1	PNP	8x49 mm	3 kHz	-25 °C to +70 °C
S4602037	BI 2U-EG08-AN6X-H1341	Uprox+	2 mm	Embeddable	male, M12 x 1	NPN	8x57 mm	2 kHz	-30 °C to +85 °C
S4602034	BI 2U-EG08-AP6X-H1341	Uprox+	2 mm	Embeddable	male, M12 x 1	PNP	8x57 mm	2 kHz	-30 °C to +85 °C
S4602033	BI 2U-EG08-AP6X-V1131	Uprox+	2 mm	Embeddable	male, M8 x 1	PNP	8x49 mm	2 kHz	-30 °C to +85 °C

Sensors | Inductive

8 mm Barrel, 3-wire DC (continued)

Product ID	Product Description	Special Feature	Switching Distance	Embeddable vs Non-embeddable	Connection	Output Function	Dimensions	Switching Freq.	Ambient Temp.
S4602422	BI 3U-EM08-AN6X-H1341	Uprox3	3 mm	Embeddable	male, M12 x 1	NPN	8x42 mm	1 kHz	0 °C to +60 °C
S4602423	BI 3U-EM08-AN6X-V1131	Uprox3	3 mm	Embeddable	male, M8 x 1	NPN	8x39 mm	1 kHz	0 °C to +60 °C
S4602412	BI 3U-EM08-AP6X-H1341	Uprox3	3 mm	Embeddable	male, M12 x 1	PNP	8x42 mm	1 kHz	0 °C to +60 °C
S4602413	BI 3U-EM08-AP6X-V1131	Uprox3	3 mm	Embeddable	male, M8 x 1	PNP	8x39 mm	1 kHz	0 °C to +60 °C
S4602850	NI 3-EG08-AN6X-V1131	-	3 mm	Non-embeddable	male, M8 x 1	NPN	8x49 mm	3 kHz	-25 °C to +70 °C
S4602760	NI 3-EG08-AP6X-H1341	-	3 mm	Non-embeddable	male, M12 x 1	PNP	8x57 mm	3 kHz	-25 °C to +70 °C
S4602750	NI 3-EG08-AP6X-V1131	-	3 mm	Non-embeddable	male, M8 x 1	PNP	8x49 mm	3 kHz	-25 °C to +70 °C
S4600650	NI 4U-EG08-AN6X-H1341	Uprox+	4 mm	Non-embeddable	male, M12 x 1	NPN	8x57 mm	2 kHz	-30 °C to +85 °C
S4600640	NI 4U-EG08-AP6X-H1341	Uprox+	4 mm	Non-embeddable	male, M12 x 1	PNP	8x57 mm	2 kHz	-30 °C to +85 °C
S4600620	NI 4U-EG08-AP6X-V1131	Uprox+	4 mm	Non-embeddable	male, M8 x 1	PNP	8x49 mm	2 kHz	-30 °C to +85 °C
S4635802	NI 6U-EG08-AP6X-H1341	Uprox+	6 mm	Non-embeddable	male, M12 x 1	PNP	8x57 mm	1 kHz	-25 °C to +70 °C
S4635801	NI 6U-EG08-AP6X-V1131	Uprox+	6 mm	Non-embeddable	male, M8 x 1	PNP	8x49 mm	1 kHz	-25 °C to +70 °C

12 mm Barrel, 3-wire DC



Operating voltage: 10-30 VDC

Short circuit protection

Reverse polarity protection

Chrome plated, brass barrel

Output: normally open

Product ID	Product Description	Special Feature	Switching Distance	Embeddable vs Non-embeddable	Connection	Output Function	Dimensions	Switching Freq.	Ambient Temp.
T4606600	BI 2-M12-AN6X-H1141	-	2 mm	Embeddable	male, M12 x 1	NPN	12x52 mm	2 kHz	-25 °C to +70 °C
T4606500	BI 2-M12-AP6X-H1141	-	2 mm	Embeddable	male, M12 x 1	PNP	12x52 mm	2 kHz	-25 °C to +70 °C
T4607100	BI 4-M12-AN6X-H1141	-	4 mm	Embeddable	male, M12 x 1	NPN	12x52 mm	2 kHz	-25 °C to +70 °C
T4607000	BI 4-M12-AP6X-H1141	-	4 mm	Embeddable	male, M12 x 1	PNP	12x52 mm	2 kHz	-25 °C to +70 °C
M1634824	BI 4U-M12-AN6X-H1141	Uprox+	4 mm	Embeddable	male, M12 x 1	NPN	12x52 mm	2 kHz	-30 °C to +85 °C
M1634804	BI 4U-M12-AP6X-H1141	Uprox+	4 mm	Embeddable	male, M12 x 1	PNP	12x52 mm	2 kHz	-30 °C to +85 °C
M1644808	BI 6U-M12-AN6X-H1141	Uprox3	6 mm	Embeddable	male, M12 x 1	NPN	12x52 mm	2 kHz	-25 °C to +70 °C
M1644810	BI 6U-M12-AP6X-H1141	Uprox3	6 mm	Embeddable	male, M12 x 1	PNP	12x52 mm	2 kHz	-25 °C to +70 °C
T4606800	NI 4-M12-AN6X-H1141	-	4 mm	Non-embeddable	male, M12 x 1	NPN	12x52 mm	2 kHz	-25 °C to +70 °C
T4606700	NI 4-M12-AP6X-H1141	-	4 mm	Non-embeddable	male, M12 x 1	PNP	12x52 mm	2 kHz	-25 °C to +70 °C
T4611310	NI 8-M12-AP6X-H1141	-	8 mm	Non-embeddable	male, M12 x 1	PNP	12x52 mm	2 kHz	-25 °C to +70 °C
M1644150	NI 8U-M12-AN6X-H1141	Uprox+	8 mm	Non-embeddable	male, M12 x 1	NPN	12x52 mm	2 kHz	-30 °C to +85 °C
M1644140	NI 8U-M12-AP6X-H1141	Uprox+	8 mm	Non-embeddable	male, M12 x 1	PNP	12x52 mm	2 kHz	-30 °C to +85 °C
M1644145	NI 8U-M12-AP6X2-H1141	Uprox+	8 mm	Non-embeddable	male, M12 x 1	PNP	8x52 mm	2 kHz	-30 °C to +85 °C

Sensors | Inductive

18 mm Barrel, 3-wire DC



Operating voltage: 10-30 VDC
 Short circuit protection
 Reverse polarity protection
 Chrome plated, brass barrel
 Output: normally open

Product ID	Product Description	Special Feature	Switching Distance	Embeddable vs Non-embeddable	Connection	Output Function	Dimensions	Switching Freq.	Ambient Temp.
T4614600	BI 5-M18-AN6X-H1141	-	5 mm	Embeddable	male, M12 x 1	NPN	8x52 mm	0.5 kHz	-25 °C to +70 °C
T4614500	BI 5-M18-AP6X-H1141	-	5 mm	Embeddable	male, M12 x 1	PNP	8x52 mm	0.5 kHz	-25 °C to +70 °C
M1635150	BI 5U-M18-AN6X-H1141	Uprox	5 mm	Embeddable	male, M12 x 1	NPN	8x52 mm	1.5 kHz	-30 °C to +85 °C
M1635140	BI 5U-M18-AP6X-H1141	Uprox	5 mm	Embeddable	male, M12 x 1	PNP	8x52 mm	1.5 kHz	-30 °C to +85 °C
T4615100	BI 8-M18-AN6X-H1141	-	8 mm	Embeddable	male, M12 x 1	NPN	8x52 mm	0.5 kHz	-25 °C to +70 °C
T4615000	BI 8-M18-AP6X-H1141	-	8 mm	Embeddable	male, M12 x 1	PNP	8x52 mm	0.5 kHz	-25 °C to +70 °C
M1644847	BI10U-M18-AN6X-H1141	Uprox3	10 mm	Embeddable	male, M12 x 1	NPN	8x52 mm	1.5 kHz	-25 °C to +70 °C
M1644830	BI10U-M18-AP6X-H1141	Uprox3	10 mm	Embeddable	male, M12 x 1	PNP	8x52 mm	1.5 kHz	-25 °C to +70 °C
T4614700	NI 8-M18-AP6X-H1141	-	8 mm	Non-embeddable	male, M12 x 1	PNP	8x52 mm	0.5 kHz	-25 °C to +70 °C
M1645150	NI12U-M18-AN6X-H1141	Uprox	12 mm	Non-embeddable	male, M12 x 1	NPN	8x52 mm	1.5 kHz	-30 °C to +85 °C
M1645140	NI12U-M18-AP6X-H1141	Uprox	12 mm	Non-embeddable	male, M12 x 1	PNP	8x52 mm	1.5 kHz	-30 °C to +85 °C
T4611400	NI14-M18-AP6X-H1141	-	14 mm	Non-embeddable	male, M12 x 1	PNP	8x52 mm	0.5 kHz	-25 °C to +70 °C

30 mm Barrel, 3-wire DC



Operating voltage: 10-30 VDC
 Short circuit protection
 Reverse polarity protection
 Chrome plated, brass barrel
 Output: normally open

Product ID	Product Description	Special Feature	Switching Distance	Embeddable vs Non-embeddable	Connection	Output Function	Dimensions	Switching Freq.	Ambient Temp.
M1636140	BI10U-M30-AP6X-H1141	Uprox	10 mm	Embeddable	male, M12 x 1	PNP	30x62 mm	1.5 kHz	-30 °C to +85 °C
T4618600	BI15-M30-AN6X-H1141	-	15 mm	Embeddable	male, M12 x 1	NPN	30x62 mm	0.3 kHz	-25 °C to +70 °C
T4618500	BI15-M30-AP6X-H1141	-	15 mm	Embeddable	male, M12 x 1	PNP	30x62 mm	0.3 kHz	-25 °C to +70 °C
M1636732	BI15U-M30-AP6X-H1141	Uprox+	15 mm	Embeddable	male, M12 x 1	PNP	30x62 mm	1 kHz	-30 °C to +85 °C
T4670510	NI20-M30-AP6X-H1141	-	20 mm	Non-embeddable	male, M12 x 1	PNP	30x62 mm	0.5 kHz	-25 °C to +70 °C
M1646140	NI20U-M30-AP6X-H1141	Uprox	20 mm	Non-embeddable	male, M12 x 1	PNP	30x62 mm	1 kHz	-30 °C to +85 °C
M1646631	NI30U-M30-AP6X-H1141	Uprox+	30 mm	Non-embeddable	male, M12 x 1	PNP	30x62 mm	1 kHz	-30 °C to +85 °C

Sensors | Inductive

2-wire AC/DC



Operating voltage: 20-250 VAC / 10-300 VDC
 Short circuit protection
 Output: normally open

Product ID	Product Description	Switching Distance	Embeddable vs Non-embeddable	Connection	Output Function	Dimensions	Switching Freq.	Ambient Temp.
T4205001	BI 2-G12-ADZ32X-B3131	2 mm	Embeddable	male, 1/2-20 UNF	AC/DC	12x71 mm	.02 kHz	-25 °C to +70 °C
T4209301	BI 8-G18-ADZ30X2-B3331	8 mm	Embeddable	male, 1/2-20 UNF	AC/DC	8x70 mm	.02 kHz	-25 °C to +70 °C
T4207202	BI15-G30-ADZ30X2-B1131	15 mm	Embeddable	male, 7/16-16 UN	AC/DC	30x80 mm	.02 kHz	-25 °C to +70 °C
M4230992	BI40-CP80-FDZ30X2-B3131	40 mm	Embeddable	male, 1/2-20 UNF	AC/DC	80x80x40 mm	.06 kHz	-25 °C to +70 °C
M4280991	NI75U-CP80-FDZ30X2-B1131	75 mm	Non-embeddable	male, 1/2-20 UNF	AC/DC	80x80x40 mm	.025 kHz	-30 °C to +85 °C

2-wire DC



Operating voltage: 10-65 VDC
 Short circuit protection
 Reverse polarity protection
 Output: normally open

Product ID	Product Description	Switching Distance	Embeddable vs Non-embeddable	Connection	Output Function	Dimensions	Switching Freq.	Ambient Temp.
S4600203	BI 1.5-EG08-AD6X-H1341	1.5 mm	Embeddable	male, M12 x 1	DC	8x57 mm	3 kHz	-25 °C to +70 °C
T4405041	BI 3-M12-AD4X-H1141	3 mm	Embeddable	male, M12 x 1	DC	12x52 mm	1 kHz	-25 °C to +70 °C
T4414541	BI 7-M18-AD4X-H1141	7 mm	Embeddable	male, M12 x 1	DC	18x52 mm	1 kHz	-25 °C to +70 °C
T4417500	BI10-M30-AD4X-H1141	10 mm	Embeddable	male, M12 x 1	DC	30x62 mm	0.5 kHz	-25 °C to +70 °C

Accessory



For use with barrel sensors

Product ID	Product Description	Barrel Size
A3130	MB-12	12 mm
A2523	MBSS-12	12 mm
A3135	MB-18	18 mm
A2524	MBSS-18	18 mm
A3140	MB-30	30 mm

Sensors | Inductive

Rectangular



Operating voltage: 10-30 VDC
 Short circuit protection
 Reverse polarity protection
 Output: normally open

Product ID	Product Description	Special Feature	Switching Distance	Embeddable vs Non-embeddable	Connection	Output Function	Dimensions	Switching Freq.
M1625689	BI15U-CK40-AP6X2-H1141 W/BS 2.1	Uprox	15 mm	Embeddable	male, M12 x 1	PNP	40x40x65 mm	0.25 kHz
M1625829	BI30U-CK40-AP6X2-H1141 W/BS 4	Uprox+	30 mm	Embeddable	male, M12 x 1	PNP	40x40x65 mm	0.25 kHz
M1625790	NI25U-CK40-AP6X2-H1141 W/BS 2.1	Uprox	25 mm	Non-embeddable	male, M12 x 1	PNP	40x40x65 mm	0.25 kHz
M1625800	NI35U-CK40-AP6X2-H1141 W/BS 4	Uprox+	35 mm	Non-embeddable	male, M12 x 1	PNP	40x40x65 mm	0.25 kHz
M1625868	NI50U-CK40-AP6X2-H1141 W/BS4	Uprox+	50 mm	Non-embeddable	male, M12 x 1	PNP	40x40x65 mm	0.25 kHz
M1608940	BI50U-Q80-AP6X2-H1141	Uprox+	50 mm	Embeddable	male, M12 x 1	PNP	80x80x40 mm	0.25 kHz
M1625855	NI75U-Q80-AP6X2-H1141	Uprox+	75 mm	Non-embeddable	male, M12 x 1	PNP	80x80x40 mm	0.25 kHz
M1623890	NI75U-CP80-AP6X2-H1141	Uprox+	75 mm	Non-embeddable	male, M12 x 1	PNP	80x80x40 mm	0.25 kHz

Rectangular, 3-wire DC

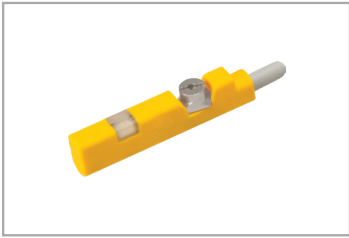


Operating voltage: 10-30 VDC
 Short circuit protection
 Reverse polarity protection
 Output: normally open

Product ID	Product Description	Special Feature	Switching Distance	Embeddable vs Non-embeddable	Connection	Output Function	Dimensions	Switching Freq.
S1614001	BI 2-Q4.7-AN6X	-	2 mm	Embeddable	2 m cable	NPN	16x8x4.7 mm	1 kHz
S1614000	BI 2-Q4.7-AP6X	-	2 mm	Embeddable	2 m cable	PNP	16x8x4.7 mm	1 kHz
S1613100	BI 2-Q5.5-AN6X	-	2 mm	Embeddable	2 m cable	NPN	28x8x5.5 mm	1 kHz
S1613000	BI 2-Q5.5-AP6X	-	2 mm	Embeddable	2 m cable	PNP	28x8x5.5 mm	1 kHz
S1600600	BI 5-Q08-AN6X2-V1131	-	5 mm	Embeddable	male, M8 x 1	NPN	32x20x8 mm	1 kHz
S1600500	BI 5-Q08-AP6X2-V1131	-	5 mm	Embeddable	male, M8 x 1	PNP	32x20x8 mm	1 kHz
S1608905	BI 5U-Q08-AP6X2-V2131	Uprox	5 mm	Embeddable	male, M8 x 1	PNP	32x20x8 mm	1 kHz
S1601620	BI 7-Q08-AN6X2	-	7 mm	Embeddable	2 m cable	NPN	32x20x8 mm	0.5 kHz
S1601600	BI 7-Q08-AP6X2	-	7 mm	Embeddable	2 m cable	PNP	32x20x8 mm	0.5 kHz
S1601602	BI 7-Q08-AP6X2-V1131	-	7 mm	Embeddable	male, M8 x 1	PNP	32x20x8 mm	0.5 kHz
S1662005	BI 8U-Q08-AP6X2-V1131	Uprox+	8 mm	Embeddable	male, M8 x 1	PNP	32x20x8 mm	0.25 kHz
S4613601	NI 3.5-Q5.5-AP6X	-	3.5 mm	Non-embeddable	2 m cable	PNP	28x8x5.5 mm	2 kHz

Sensors | Magnetic

Cylinder Sensor



Operating voltage: 10-30 VDC
 IP rating: IP67
 Output: normally open

Product ID	Product Description	Special Feature	Connection	Output Function	Dimension	Switching Freq.
S4685844	BIM-UNR-AP6X-0.3M-PSG 3M W/M	C Groove	male, M8 x 1	PNP	20x3x4 mm	0.3 kHz
S4685843	BIM-UNR-AP6X-0.3M-PSG 3S W/M	C Groove	male, M8 thread/snap	PNP	20x3x4 mm	0.3 kHz
S4685845	BIM-UNR-AP6X-0.3M-RS 4T W/M	C Groove	male, M12 x 1	PNP	20x3x4 mm	0.3 kHz
S4685891	BIM-UNT-2AP6X-0.2M-RSC 4.4T	Dual sensors	male, M12 x 1	PNP	31x5x6 mm	1 kHz
S4685720	BIM-UNT-AP6X	T Groove	2 m cable	PNP	31x5x6 mm	1 kHz
S4685723	BIM-UNT-AP6X-0.3M-PSG 3M	T Groove	male, M8 x 1	PNP	31x5x6 mm	1 kHz
S4685722	BIM-UNT-AP6X-0.3M-PSG 3S	T Groove	male, M8 thread/snap	PNP	31x5x6 mm	1 kHz
S46857260	BIM-UNT-AP6X-0.3M-RS 4T	T Groove	male, M12 x 1	PNP	31x5x6 mm	1 kHz

Accessory



For use with BIM-UNT sensors

Product ID	Product Description	Special Features	Cylinder Style
M6965102	ASB-2 STRAP	Round Cylinder, 11-19 mm Ø	Round
M6965103	ASB-3 STRAP	Round Cylinder, 18-29 mm Ø	Round
M6965104	ASB-4 STRAP	Round Cylinder, 28-39 mm Ø	Round
M6965105	ASB-5 STRAP	Round Cylinder, 38-49 mm Ø	Round
S6913351	KLDT-UNT2	Round or Dovetail Cylinder	Round/Dovetail
S6913352	KLDT-UNT3	Round or Dovetail Cylinder	Round/Dovetail
S6913353	KLDT-UNT4	Round or Dovetail Cylinder	Round/Dovetail
A9927	KLZ1M-UNT	Tie Rod Cylinder	Tie Rod
A9929	KLZ2M-UNT	Tie Rod Cylinder	Tie Rod
A9640	KLZ3M-UNT CLAMP	Tie Rod Cylinder	Tie Rod

Sensors | Capacitive

Rectangular - Capacitive sensor



Operating voltage: 10-30 VDC
Fluid and metal/non-metallic parts detection

Product ID	Product Description	Switching Distance	Connection	Output Function	Special Feature	Output - NO/NC	Dimensions
S2620120	BC 5-QF5.5-AN6X2/S250	5 mm	2 m cable	NPN	No Potentiometer	NO	50x20x5.5 mm
S2620116	BC 5-QF5.5-AP6X2/S250	5 mm	2 m cable	PNP	No Potentiometer	NO	50x20x5.5 mm
S2620121	BC10-QF5.5-AN6X2	10 mm	2 m cable	NPN	-	NO	50x20x5.5 mm
S2620137	BC10-QF5.5-AN6X2/S932	10 mm	2 m cable	NPN	Covered Potentiometer	NO	50x20x5.5 mm
S2620117	BC10-QF5.5-AP6X2	10 mm	2 m cable	PNP	-	NO	50x20x5.5 mm
S2620109	BC10-QF5.5-AP6X2/S932	10 mm	2 m cable	PNP	Covered Potentiometer	NO	50x20x5.5 mm
S2620197	BC10-QF5.5-AP6X2-0.2M-RS 4T	10 mm	cable, M12 x 1	PNP	-	NO	50x20x5.5 mm
S2620128	BC10-QF5.5-RN6X2	10 mm	2 m cable	NPN	-	NC	50x20x5.5 mm
S2620126	BC10-QF5.5-RP6X2	10 mm	2 m cable	PNP	-	NC	50x20x5.5 mm
S2620100	BC 5-Q08-AN6X2/S250	5 mm	2 m cable	NPN	No Potentiometer	NO	32x20x8 mm
S2620000	BC 5-Q08-AP6X2/S250	5 mm	2 m cable	PNP	No Potentiometer	NO	32x20x8 mm

12 mm Barrel, Capacitive, 3-wire DC

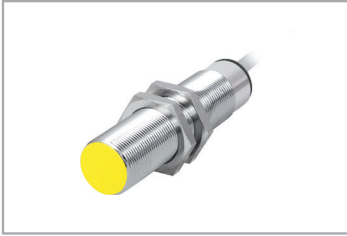


Operating voltage: 10-30 VDC
Fluid and metal/non-metallic parts detection
Adjustment via potentiometer

Product ID	Product Description	Switching Distance	Connection	Output Function	Output - NO/NC	Housing Material
M2601100	BC 3-M12-AN6X	3 mm	2 m cable	NPN	NO	Chrome Plated Brass
M2601190	BC 3-M12-AN6X-0.2M-RS 4T	3 mm	cable, M12 x 1	NPN	NO	Chrome Plated Brass
M2601000	BC 3-M12-AP6X	3 mm	2 m cable	PNP	NO	Chrome Plated Brass
M2601091	BC 3-M12-AP6X-0.2M-RS 4T	3 mm	cable, M12 x 1	PNP	NO	Chrome Plated Brass
M2601011	BC 3-M12-AP6X-H1141	3 mm	male, M12 x 1	PNP	NO	Chrome Plated Brass
M2601300	BC 3-S12-AN6X	3 mm	2 m cable	NPN	NO	Plastic Barrel
M2601200	BC 3-S12-AP6X	3 mm	2 m cable	PNP	NO	Plastic Barrel
M2601291	BC 3-S12-AP6X-0.2M-RS 4T	3 mm	cable, M12 x 1	PNP	NO	Plastic Barrel

Sensors | Capacitive

18 mm Barrel, Capacitive, 3-wire DC



Operating voltage: 10-65 VDC
 Fluid and metal/non-metallic parts detection
 Adjustment via potentiometer

Product ID	Product Description	Switching Distance	Connection	Output Function	Output - NO/NC	Special Feature	Housing Material
M2504001	BC 5-M18-AP4X	5 mm	2 m cable	PNP	NO	-	Chrome Plated Brass
M2504090	BC 5-M18-AP4X-0.2M-RS 4T	5 mm	cable, M12 x 1	PNP	NO	-	Chrome Plated Brass
M2503012	BCF 5-S18-AN4X	5 mm	2 m cable	NPN	NO	Noise Immune	Plastic Barrel
M2503089	BCF 5-S18-AN4X-0.2M-RS 4T	5 mm	cable, M12 x 1	NPN	NO	Noise Immune	Plastic Barrel
M2503011	BCF 5-S18-AP4X	5 mm	2 m cable	PNP	NO	Noise Immune	Plastic Barrel
M2503099	BCF 5-S18-AP4X-0.2M-RS 4T	5 mm	cable, M12 x 1	PNP	NO	Noise Immune	Plastic Barrel

18 mm Barrel, Capacitive, 2-wire AC



Operating voltage: 20-250 VAC
 Fluid and metal/non-metallic parts detection
 Adjustment via potentiometer

Product ID	Product Description	Switching Distance	Connection	Output Function	Output - NO/NC	Housing Material
M2305000	BC 5-M18-AZ3X	5 mm	2 m cable	AC	NO	Chrome Plated Brass
M2305500	BC 5-S18-AZ3X	5 mm	2 m cable	AC	NO	Plastic Barrel

30 mm Barrel, Capacitive, 3-wire DC



Operating voltage: 10-65 VDC
 Fluid and metal/non-metallic parts detection
 Adjustment via potentiometer

Product ID	Product Description	Switching Distance	Connection	Output Function	Output - NO/NC	Special Feature	Housing Material
M2503026	BC10-M30K-AP4X-H1141	10 mm	male, M12 x 1	PNP	NO	-	Chrome Plated Brass
M2503038	BCC10-S30-AP4X-H1141	10 mm	male, M12 x 1	PNP	NO	Low Dielectric Targets	Plastic Barrel

Sensors | Capacitive

30 mm Barrel, Capacitive, 4-wire DC



Operating voltage: 10-65 VDC
 Fluid and metal/non-metallic parts detection
 Complementary outputs
 Adjustment via potentiometer

Product ID	Product Description	Switching Distance	Connection	Output Function	Output - NO/NC	Special Feature
M2505000	BC10-P30SR-VP4X2 W/M16X1.5	10 mm	Terminal Chamber	PNP	Complementary	-
M2506100	BC10-S30-VP4X-H1141	10 mm	male, M12 x 1	PNP	Complementary	-
M2506011	BCF10-S30-VN4X	10 mm	2 m cable	NPN	Complementary	Noise Immune
M2506016	BCF10-S30-VN4X-H1141	10 mm	male, M12 x 1	NPN	Complementary	Noise Immune
M2506111	BCF10-S30-VP4X	10 mm	2 m cable	PNP	Complementary	Noise Immune
M2506117	BCF10-S30-VP4X-H1141	10 mm	male, M12 x 1	PNP	Complementary	Noise Immune

30 mm Barrel, Capacitive, 2-wire AC



Operating voltage: 20-250 VAC
 Fluid and metal/non-metallic parts detection
 Adjustment via potentiometer

Product ID	Product Description	Switching Distance	Connection	Output Function	Output - NO/NC	Special Feature	Housing Material
M2503031	BC10-M30K-AZ3X	10 mm	2 m cable	AC	NO	-	Chrome Plated Brass
M2310400	BC10-P30SR-FZ3X2 W/M16X1.5	10 mm	Terminal Chamber	AC	Programmable	-	Plastic Barrel
M2506015	BCF10-S30-AZ3X	10 mm	2 m cable	AC	NO	Noise Immune	Plastic Barrel
M2506012	BCF10-S30-AZ3X-B3131	10 mm	male, 1/2-20 UNF	AC	NO	Noise Immune	Plastic Barrel
M2506013	BCF10-S30-RZ3X	10 mm	2 m cable	AC	NC	Noise Immune	Plastic Barrel
M2506014	BCF10-S30-RZ3X-B3131	10 mm	male, 1/2-20 UNF	AC	NC	Noise Immune	Plastic Barrel

Capacitive, 2-wire NAMUR



Requires switching amplifier
 Fluid and metal/non-metallic parts detection
 Intrinsically safe

Product ID	Product Description	Switching Distance	Connection	Output Function	Output - NO/NC	Housing Material
S2030000	BC 5-QF5.5-Y1X/S250	5 mm	2 m cable	Namur	Namur	Plastic Housing
M2006000	BC 5-S18-Y1X	5 mm	2 m cable	Namur	Namur	Plastic Barrel
M2010000	BC10-S30-Y1X	10 mm	2 m cable	Namur	Namur	Plastic Barrel

Sensors | Flow

Airflow Flow Monitor



Operating voltage: 24 VDC +/- 10%
 Calorimetric flow principle
 No moving parts

Product ID	Product Description	Measuring Span	Process Connection	Output Function	Output - NO/NC	Connection
M6870704	FCS-M18-AP8X	0.5-15 m/s	M18x1	3-wire DC, PNP	NO	2 m cable

Flow Monitor, Insertion Probe



Operating voltage: 24 VDC +/- 10%
 Calorimetric flow principle
 No moving parts

Product ID	Product Description	Measuring Span	Process Connection	Output Function	Output - NO/NC	Connection
M6871004	FCS-N1/2A4-AP8X-H1141	1-150 cm/s	1/2" Male NPT	3-wire DC, PNP	NO	male, M12 x 1
M6871032	FCS-N1/2A4P-AP8X-H1141	5-150 cm/s	1/2" Male NPT	3-wire DC, PNP	NO	male, M12 x 1
M6870082	FCS-G1/4A4P-AP8X-H1141	1-150 cm/s	G1/2 Male	3-wire DC, PNP	NO	male, M12 x 1
M6871025	FCS-N1/2A4P-ARX-B1151 115VAC	1-150 cm/s	1/2" Male NPT	Relay	NO	male, 7/8"
M6871037	FCS-N1/2A4P-ARX-B3141 115VAC	1-150 cm/s	1/2" Male NPT	Relay	NO	male, 1/2"

Inline Flow Monitor



Operating voltage: 24 VDC +/- 10%
 Calorimetric flow principle
 No moving parts

Product ID	Product Description	Measuring Span	Process Connection	Output Function	Output - NO/NC	Connection
M6870640	FCI-D04A4P-AP8X-H1141	0.015-1 lpm	G1/4 Male	3-wire DC, PNP	NO	male, M12 x 1
M6870642	FCI-D10A4P-AP8X-H1141	1-6 lpm	G1/4 Male	3-wire DC, PNP	NO	male, M12 x 1

Sensors | Pressure

Pressure Sensor with Display



Fully programmable
Digital pressure display

Product ID	Product Description	Measuring Span	Output Function	Operating Voltage	Connection	Process Connection	Special Feature
M6833012	PK010R-N14AL-2UP8X-V1141	0 to 10 Bar	PNP	10.8-30 VDC	male, M8 x 1	1/8" Male NPT	Pneumatic
M6833007	PK010R-P14-2UP8X-V1141	0 to 10 Bar	PNP	10.8-30 VDC	male, M8 x 1	1/8" Male NPT	Pneumatic
M6832626	PS001V-501-2UPN8X-H1141	-1 to 1 Bar	PNP/NPN	15-30 VDC	male, M12 x 1	G1/4 Female	Rotatable Display
M6832627	PS003V-501-2UPN8X-H1141	-1 to 3 Bar	PNP/NPN	15-30 VDC	male, M12 x 1	G1/4 Female	Rotatable Display
M6833418	PS010V-303-2UPN8X-H1141	-1 to 10 Bar	PNP/NPN	15-30 VDC	male, M12 x 1	1/4" Male NPT	-
M6833406	PS010V-303-LI2UPN8X-H1141	-1 to 10 Bar	PNP/NPN/4-20 mA	18-30 VDC	male, M12 x 1	1/4" Male NPT	-
M6832628	PS010V-501-2UPN8X-H1141	-1 to 10 Bar	PNP/NPN	15-30 VDC	male, M12 x 1	G1/4 Female	Rotatable Display
M6832662	PS010V-503-2UPN8X-H1141	-1 to 10 Bar	PNP/NPN	15-30 VDC	male, M12 x 1	1/4" Male NPT	Rotatable Display
M6832829	PS010V-503-LI2UPN8X-H1141	-1 to 10 Bar	PNP/NPN/4-20 mA	18-30 VDC	male, M12 x 1	1/4" Male NPT	Rotatable Display
M6832663	PS016V-503-2UPN8X-H1141	-1 to 16 Bar	PNP/NPN	15-30 VDC	male, M12 x 1	1/4" Male NPT	Rotatable Display
M6832830	PS016V-503-LI2UPN8X-H1141	-1 to 16 Bar	PNP/NPN/4-20 mA	18-30 VDC	male, M12 x 1	1/4" Male NPT	Rotatable Display
M6832630	PS025V-501-2UPN8X-H1141	-1 to 25 Bar	PNP/NPN	15-30 VDC	male, M12 x 1	G1/4 Female	Rotatable Display
M6832665	PS040V-503-2UPN8X-H1141	-1 to 40 Bar	PNP/NPN	15-30 VDC	male, M12 x 1	1/4" Male NPT	Rotatable Display
M6832832	PS040V-503-LI2UPN8X-H1141	-1 to 40 Bar	PNP/NPN/4-20 mA	18-30 VDC	male, M12 x 1	1/4" Male NPT	Rotatable Display
M6832632	PS100R-501-2UPN8X-H1141	0 to 100 Bar	PNP/NPN	15-30 VDC	male, M12 x 1	G1/4 Female	Rotatable Display
M6832666	PS100R-503-2UPN8X-H1141	0 to 100 Bar	PNP/NPN	15-30 VDC	male, M12 x 1	1/4" Male NPT	Rotatable Display
M6832287	PS100R-503-LI2UPN8X-H1141	0 to 100 Bar	PNP/NPN/4-20 mA	18-30 VDC	male, M12 x 1	1/4" Male NPT	Rotatable Display
M6832633	PS250R-501-2UPN8X-H1141	0 to 250 Bar	PNP/NPN	15-30 VDC	male, M12 x 1	G1/4 Female	Rotatable Display
M6832667	PS250R-503-2UPN8X-H1141	0 to 250 Bar	PNP/NPN	15-30 VDC	male, M12 x 1	1/4" Male NPT	Rotatable Display
M6832288	PS250R-503-LI2UPN8X-H1141	0 to 250 Bar	PNP/NPN/4-20 mA	18-30 VDC	male, M12 x 1	1/4" Male NPT	Rotatable Display
M6832634	PS400R-501-2UPN8X-H1141	0 to 400 Bar	PNP/NPN	15-30 VDC	male, M12 x 1	G1/4 Female	Rotatable Display

Sensors | Pressure

Pressure Transmitter



PSI and bar ranges
Output: 4-20 mA and 0-10 VDC

Product ID	Product Description	Measuring Span	Output Function	Operating Voltage	Connection	Process Connection
H6831432	PT010R-11-LI3-H1131	0 to 10 Bar	4-20 mA, 2-wire	8-33 VDC	male, M12 x 1	G1/4 Female
H6831440	PT025R-11-LI3-H1131	0 to 25 Bar	4-20 mA, 2-wire	8-33 VDC	male, M12 x 1	G1/4 Female
H6831464	PT1000PSIG-13-LI3-H1131	0 to 1000 PSIG	4-20 mA, 2-wire	8-33 VDC	male, M12 x 1	1/4" Male NPT
H6831459	PT100PSIG-13-LI3-H1131	0 to 100 PSIG	4-20 mA, 2-wire	8-33 VDC	male, M12 x 1	1/4" Male NPT
H6831443	PT100R-11-LI3-H1131	0 to 100 Bar	4-20 mA, 2-wire	8-33 VDC	male, M12 x 1	G1/4 Female
H6833597	PT150PSIG-13-LI3-H1131	0 to 150 PSIG	4-20 mA, 2-wire	8-33 VDC	male, M12 x 1	1/4" Male NPT
H6831456	PT15PSIG-13-LI3-H1131	0 to 15 PSIG	4-20 mA, 2-wire	8-33 VDC	male, M12 x 1	1/4" Male NPT
H6831465	PT2000PSIG-13-LI3-H1131	0 to 2000 PSIG	4-20 mA, 2-wire	8-33 VDC	male, M12 x 1	1/4" Male NPT
H6831460	PT200PSIG-13-LI3-H1131	0 to 200 PSIG	4-20 mA, 2-wire	8-33 VDC	male, M12 x 1	1/4" Male NPT
H6831445	PT250R-11-LI3-H1131	0 to 250 Bar	4-20 mA, 2-wire	8-33 VDC	male, M12 x 1	G1/4 Female
H6831466	PT3000PSIG-13-LI3-H1131	0 to 3000 PSIG	4-20 mA, 2-wire	8-33 VDC	male, M12 x 1	1/4" Male NPT
H6831461	PT300PSIG-13-LI3-H1131	0 to 300 PSIG	4-20 mA, 2-wire	8-33 VDC	male, M12 x 1	1/4" Male NPT
H6831455	PT-30HG-13-LI3-H1131	-30 to 0 in Hg	4-20 mA, 2-wire	8-33 VDC	male, M12 x 1	1/4" Male NPT
H6831457	PT30PSIG-13-LI3-H1131	0 to 30 PSIG	4-20 mA, 2-wire	8-33 VDC	male, M12 x 1	1/4" Male NPT
H6831467	PT5000PSIG-13-LI3-H1131	0 to 5000 PSIG	4-20 mA, 2-wire	8-33 VDC	male, M12 x 1	1/4" Male NPT
H6831462	PT500PSIG-13-LI3-H1131	0 to 500 PSIG	4-20 mA, 2-wire	8-33 VDC	male, M12 x 1	1/4" Male NPT
H6831458	PT60PSIG-13-LI3-H1131	0 to 60 PSIG	4-20 mA, 2-wire	8-33 VDC	male, M12 x 1	1/4" Male NPT

Accessory



Mounting and protection for pressure sensors and transmitters

Product ID	Product Description	Function	Fitting A	Fitting B
M6835012	PCV-G1/2A4	Adapter Fitting	G1/4 Male	G1/2 Male
M6835011	PCV-G1/4A4	Adapter Fitting	G1/4 Male	G1/4 Male
M6835013	PCV-N1/2A4	Adapter Fitting	G1/4 Male	1/2" Male NPT
A9867	PCV-N1/4A4	Adapter Fitting	G1/4 Male	1/4" Male NPT
M6835021	PCV-N1/8A4	Adapter Fitting	G1/4 Male	1/8" Male NPT
A9136	PCV-S7/16A4	Adapter Fitting	G1/4 Male	7/16" Male SAE
A9350	PTS-COVER	PS Pressure Sensor Cover	-	-
A9422	PTS-MB	PS Sensor Mounting Bracket	-	-

Sensors | Temperature

Temperature Sensor with Display



Operating voltage: 10-30 VDC
 Fully programmable
 Digital temperature display
 Selectable units: °C, °F and °K
 For use with 4-wire RTD probes

Product ID	Product Description	Measuring Span	Output Function	Output - NO/NC	Connection
M6840018	TS-500-2UPN8X-H1141	-50 to +500 °C	PNP/NPN	Programmable	male, M12 x 1

Remote Temperature Transmitter



Operating voltage: 15-30 VDC
 Fully programmable using IO-Link
 Programmable output: analog current or switch points
 For use with 4-wire RTD probes

Product ID	Product Description	Measuring Span	Output Function	Output - NO/NC	Connection
M9910632	TTM-100-LIUPN-H1140	0 to +150 °C (default)	PNP/NPN/4-20 mA	Programmable	male, M12 x 1

Temperature Transmitter with Probe

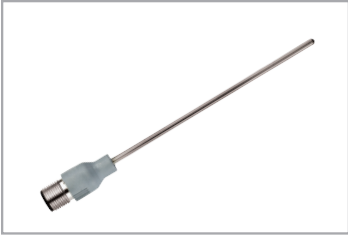


Operating voltage: 15-30 VDC
 Fully programmable using IO-Link
 Programmable output: analog current or switch points
 Integral RTD temperature probe

Product ID	Product Description	Process Connection	Output Function	Output - NO/NC	Connection	Insertion Length
M9910620	TTM-203A-CF-LIUPN-H1140-L100	3 mm Compression Fitting	PNP/NPN/4-20 mA	Programmable	male, M12 x 1	100 mm
M9910622	TTM-203A-CF-LIUPN-H1140-L150	3 mm Compression Fitting	PNP/NPN/4-20 mA	Programmable	male, M12 x 1	150 mm
M9910624	TTM-206A-CF-LIUPN-H1140-L100	6 mm Compression Fitting	PNP/NPN/4-20 mA	Programmable	male, M12 x 1	100 mm
M9910626	TTM-206A-CF-LIUPN-H1140-L150	6 mm Compression Fitting	PNP/NPN/4-20 mA	Programmable	male, M12 x 1	150 mm

Sensors | Temperature

Temperature Probe, PT100 RTD



4-wire class A RTD
 100 Ω platinum element
 M12 connector
 IP rating: IP67

Product ID	Product Description	Connection	Process Connection	Insertion Length
M9910402	TP-203A-CF-H1141-L100	male, M12 x 1	3 mm Compression Fitting	100 mm
M9910403	TP-203A-CF-H1141-L150	male, M12 x 1	3 mm Compression Fitting	150 mm
M9910646	TP-206A-CF-H1141-L050	male, M12 x 1	6 mm Compression Fitting	50 mm
M9910475	TP-206A-CF-H1141-L100	male, M12 x 1	6 mm Compression Fitting	100 mm
M9910476	TP-206A-CF-H1141-L150	male, M12 x 1	6 mm Compression Fitting	150 mm
M9910608	TP-206A-CF-H1141-L250	male, M12 x 1	6 mm Compression Fitting	250 mm
M9910478	TP-206A-CF-H1141-L300	male, M12 x 1	6 mm Compression Fitting	300 mm
M9910491	TP-206A-CF-H1141-L500	male, M12 x 1	6 mm Compression Fitting	500 mm

Compression Fittings



For use with temperature transmitter with probe and temperature probes

Product ID	Product Description	Process Connection	Function
M9910408	CF-M-3-N1/4-A4	1/4" Male NPT	3 mm Compression Fitting
M9910530	CF-M-6-G1/2-A4	G1/2 Male	6 mm Compression Fitting
M9910483	CF-M-6-G1/4-A4	G1/4 Male	6 mm Compression Fitting
A0950	CF-M-6-N1/2-A4	1/2" Male NPT	6 mm Compression Fitting
M9910484	CF-M-6-N1/4-A4	1/4" Male NPT	6 mm Compression Fitting

Thermowells



For use with temperature transmitter with probe and temperature probes

Product ID	Product Description	Process Connection	Function	Insertion Length
M9910447	THW-3-N1/2-A4-L050	1/2" Male NPT	3 mm Thermowell	50 mm
M9910448	THW-3-N1/2-A4-L100	1/2" Male NPT	3 mm Thermowell	100 mm
M9910460	THW-6-G1/2-A4-L100	G1/2 Male	6 mm Thermowell	100 mm
M9910462	THW-6-G1/2-A4-L250	G1/2 Male	6 mm Thermowell	250 mm
M9910463	THW-6-N1/2-A4-L050	1/2" Male NPT	6 mm Thermowell	50 mm
M9910464	THW-6-N1/2-A4-L100	1/2" Male NPT	6 mm Thermowell	100 mm

Sensors | Linear Position

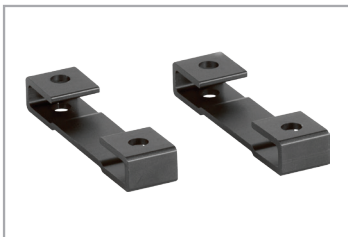
Qtrack - Linear



Inductive technology
12-bit resolution
0-10 V plus 4-20 mA analog output signals in the same sensor (5-wire, 15-30 VDC)
IP rating: IP67
Programmable measuring span
M12 Eurofast connector

Product ID	Product Description	Measuring Span	Housing Type	Accessories Included
M1590001	LI100P0-Q25LM0-LIU5X3-H1151	100 mm	Q25	Purchased separately
M1590002	LI200P0-Q25LM0-LIU5X3-H1151	200 mm	Q25	Purchased separately
M1590003	LI300P0-Q25LM0-LIU5X3-H1151	300 mm	Q25	Purchased separately
M1590004	LI400P0-Q25LM0-LIU5X3-H1151	400 mm	Q25	Purchased separately
M1590005	LI500P0-Q25LM0-LIU5X3-H1151	500 mm	Q25	Purchased separately
M1590006	LI600P0-Q25LM0-LIU5X3-H1151	600 mm	Q25	Purchased separately
M1590600	LI700P0-Q25LM0-LIU5X3-H1151	700 mm	Q25	Purchased separately
M1590601	LI900P0-Q25LM0-LIU5X3-H1151	900 mm	Q25	Purchased separately
M1590008	LI1000P0-Q25LM0-LIU5X3-H1151	1000 mm	Q25	Purchased separately
M1590725	LI50P1-Q17LM1-LIU5X2-0.3M-RS 5	50 mm	Q17	Position element and mounting feet included
M1590726	LI100P1-Q17LM1-LIU5X2-0.3M-RS 5	100 mm	Q17	Position element and mounting feet included
M1590727	LI150P1-Q17LM1-LIU5X2-0.3M-RS 5	150 mm	Q17	Position element and mounting feet included

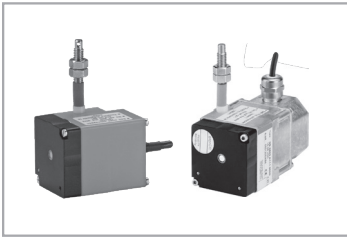
Qtrack - Linear Accessory



Product ID	Product Description	Details
M6901045	M1-Q25L	Q25 sensor mounting feet, 50 mm mounting holes (2/bag)
M6901046	M2-Q25L	Q25 sensor mounting feet, 42.5 mm mounting holes (2/bag)
M6901041	P1-LI-Q25L	Q25 position element, captive
M6901042	P2-LI-Q25L	Q25 position element, floating
M6901044	P3-LI-Q25L	Q25 position element, floating, right angle

Sensors | Linear Position

Draw wire

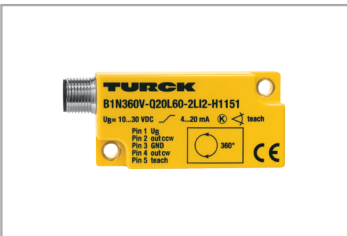


- Stainless steel cable
- Reinforced plastic housing (1 m versions)
- Zinc die cast housing (2 m versions)
- Compact housings

Product ID	Product Description	Measuring Span	Output Function	Connection
1546541	DW1000-55-7F-CA	1 m	4-20 mA	Axial cable (2 m PVC)
1546542	DW1000-55-8D-CA	1 m	0-10 V	Axial cable (2 m PVC)
1545614	DW2000-55-7F-C	2 m	4-20 mA	Radial cable (2 m PVC)
1545615	DW2000-55-PB-C	2 m	10 kOhm, Pot.	Radial cable (2 m PVC)

Sensors | Angular Position

Inclinometer



- Programmable measuring range
- Compact housings
- Q20L60 package approved for FM Class I Div 2 areas when applied with GUARD-Q20L60 and approved cordset

Product ID	Product Description	# of Axis	Measuring Span	Output Function	Temperature
M1534068	B1N360V-Q20L60-2LI2-H1151	1	0-360°	4-20 mA	-30 °C to +70 °C
M1534069	B1N360V-Q20L60-2LU3-H1151	1	0-360°	0.1-4.9 V	-30 °C to +70 °C
M1534051	B1N360V-Q20L60-2UP6X3-H1151	1	0-360°	2 x PNP	-30 °C to +70 °C
M1534065	B1N360V-Q42-CNX2-2H1150	1	0-360°	CANopen	-40 °C to +80 °C
M1534012	B2N10H-Q20L60-2LI2-H1151	2	+/- 10°	4-20 mA	-30 °C to +70 °C
M1534006	B2N10H-Q20L60-2LU3-H1151	2	+/- 10°	0.1-4.9 V	-30 °C to +70 °C
M1534061	B2N10H-Q42-CNX2-2H1150	2	+/- 10°	CANopen	-40 °C to +80 °C
M1534013	B2N45H-Q20L60-2LI2-H1151	2	+/- 45°	4-20 mA	-30 °C to +70 °C
M1534037	B2N45H-Q20L60-2LI2-H1151/S97	2	+/- 45°	4-20 mA	-40 °C to +70 °C
M1534007	B2N45H-Q20L60-2LU3-H1151	2	+/- 45°	0.1-4.9 V	-30 °C to +70 °C
M1534039	B2N45H-Q20L60-2LU3-H1151/S97	2	+/- 45°	0.1-4.9 V	-40 °C to +70 °C
M1534062	B2N45H-Q42-CNX2-2H1150	2	+/- 45°	CANopen	-40 °C to +80 °C
M1534014	B2N60H-Q20L60-2LI2-H1151	2	+/- 60°	4-20 mA	-30 °C to +70 °C
M1534060	B2N60H-Q20L60-2LU3/S97	2	+/- 60°	0.1-4.9 V	-40 °C to +70 °C
M1534008	B2N60H-Q20L60-2LU3-H1151	2	+/- 60°	0.1-4.9 V	-30 °C to +70 °C
M1534032	B2N85H-Q20L60-2LI2-H1151	2	+/- 85°	4-20 mA	-30 °C to +70 °C
M1534040	B2N85H-Q20L60-2LU3/S97	2	+/- 85°	0.1-4.9 V	-40 °C to +70 °C
M1534027	B2N85H-Q20L60-2LU3-H1151	2	+/- 85°	0.1-4.9 V	-30 °C to +70 °C

Sensors | Rotary Position

Qtrack - Rotary

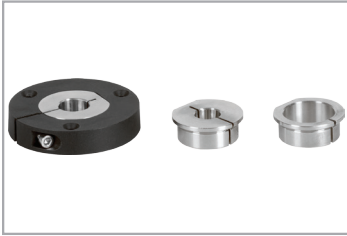


Inductive technology
High noise immunity
Robust housing
Analog or digital outputs

Product ID	Product Description	Output Function	Operating Voltage	Housing Type	Accessories Included
M1590853	RI360P1-QR14-ELIU5X2	0-10 V, 4-20 mA	15-30 VDC	QR14	Position element, 6 mm bore
M1590854	RI360P1-QR14-ELIU5X2-0.3M-RS 5	0-10 V, 4-20 mA	15-30 VDC	QR14	Position element, 6 mm bore
M1590808	RI360P1-QR14-ESG25X2-0.3M-RS 8	SSI	15-30 VDC	QR14	Position element, 6 mm bore
M1590857	RI360P2-QR14-ELIU5X2	0-10 V, 4-20 mA	15-30 VDC	QR14	Position element, 1/4" bore
M1590859	RI360P2-QR14-ELIU5X2-0.3M-RS 5	0-10 V, 4-20 mA	15-30 VDC	QR14	Position element, 1/4" bore
M1590858	RI360P2-QR14-ELU4X2/S97	0.5-4.5 V	8-30 VDC	QR14	Position element, 1/4" bore
M1590827	RI360P2-QR14-ESG25X2	SSI	15-30 VDC	QR14	Position element, 1/4" bore
M1590826	RI360P2-QR14-ESG25X2-0.3M-RS 8	SSI	15-30 VDC	QR14	Position element, 1/4" bore
M1590908	RI360P0-QR24M0-ELIU5X2-H1151	0-10 V, 4-20 mA	15-30 VDC	QR24	Purchased separately
M1590909	RI360P0-QR24M0-ELU4X2-H1151/S97	0.5-4.5 V	8-30 VDC	QR24	Purchased separately
M1590905	RI360P0-QR24M0-HESG25X3-H1181	SSI	15-30 VDC	QR24	Purchased separately
M1590910	RI360P0-QR24M0-INCRX2-H1181	Push-Pull/HTL	15-30 VDC	QR24	Purchased separately
M1590866	RI360P1-DSU35-ELIU5X2-H1151	0-10 V, 4-20 mA	15-30 VDC	DSU35	Position element, DSU Namur mount

Sensors | Rotary Position

Qtrack - Rotary Accessory



Product ID	Product Description	Details
M1590812	P1-RI-QR14	QR14 position element, 6 mm bore
M1590819	P2-RI-QR14	QR14 position element, 1/4" bore
M1590920	M1-QR24	Mounting ring, 74 mm diameter, aluminum
M1590917	M2-QR24	M1-QR24 + SP1-QR24
M1590918	M3-QR24	M1-QR24 + SP2-QR24
M1593013	P10-RI-QR24(5/8INCHES)	QR24 position element with 5/8" bore
M1593014	P11-RI-QR24(3/4INCHES)	QR24 position element with 3/4" bore
M1590921	P1-RI-QR24(20MM)	QR24 position element with 20 mm bore
M1590922	P2-RI-QR24(14MM)	QR24 position element with 14 mm bore
M1590923	P3-RI-QR24(12MM)	QR24 position element with 12 mm bore
M1590924	P4-RI-QR24(10MM)	QR24 position element with 10 mm bore
M1590925	P5-RI-QR24(6MM)	QR24 position element with 6 mm bore
M1590926	P6-RI-QR24(3/8INCHES)	QR24 position element with 3/8" bore
M1590927	P7-RI-QR24(1/4INCHES)	QR24 position element with 1/4" bore
M1590916	P8-RI-QR24(BP)	QR24 position element with blanking plug
M1593012	P9-RI-QR24(1/2INCHES)	QR24 position element with 3/4" bore
M1590937	PE1-QR24	QR24 position element with no reducing bushing
M1590961	RA10-QR24(5/8INCHES)	QR24 reducing bushing with 5/8" bore
M1590962	RA11-QR24(3/4INCHES)	QR24 reducing bushing with 3/4" bore
M1590928	RA1-QR24(20MM)	QR24 reducing bushing with 20 mm bore
M1590929	RA2-QR24(14MM)	QR24 reducing bushing with 14 mm bore
M1590930	RA3-QR24(12MM)	QR24 reducing bushing with 12 mm bore
M1590931	RA4-QR24(10MM)	QR24 reducing bushing with 10 mm bore
M1590932	RA5-QR24(6MM)	QR24 reducing bushing with 6 mm bore
M1590933	RA6-QR24(3/8INCHES)	QR24 reducing bushing with 3/8" bore
M1590934	RA7-QR24(1/4INCHES)	QR24 reducing bushing with 1/4" bore
M1590959	RA8-QR24(BP)	QR24 blanking plug
M1590960	RA9-QR24(1/2INCHES)	QR24 reducing bushing with 1/2" bore
M1590938	SP1-QR24	Shield, 74 mm diameter, aluminum
M1590939	SP2-QR24	Shield, 74 mm diameter with bore for shaft, aluminum

Sensors | Rotary Position

Optical Encoder



Rugged double bearing lock design

Wide temperature range: -40 °C to +85 °C (RI-10/12 series), -40 °C to +80 °C (RI-43 series)

Environmentally protected designs: ratings up to IP67

Product ID	Product Description	IP Rating	Pulse Rate	Shaft Size	Hollow Shaft Size	Operating Voltage	Output Function	Connection
1546140	RI-10SA1Z4-2K2500-H1181	IP67	2500	3/8"	-	5-30 VDC	Line Driver (7272)	male, M12 x 1
1545509	RI-10TA1C-2K2048-H1181	IP65	2048	3/8"	-	5-30 VDC	Line Driver (7272)	male, M12 x 1
1544898	RI-12H12S1-2K1000-H1181	IP67	1000	-	12 mm	5-30 VDC	Line Driver (7272)	male, M12 x 1
1544239	RI-12H12T-2B1024-H1181	IP67	1024	-	12 mm	10-30 VDC	Line Driver (IC-DL)	male, M12 x 1
1545443	RI-12HA0E2-2K100-H1181/N24/N61	IP67	100	-	1/4"	5-30 VDC	Line Driver (7272)	male, M12 x 1
1545510	RI-12HA0T-2B1000-H1181	IP67	1000	-	1/4"	10-30 VDC	Line Driver (IC-DL)	male, M12 x 1
1545511	RI-12HA3S1-2B256-H1181	IP67	256	-	1/2"	10-30 VDC	Line Driver (IC-DL)	male, M12 x 1
1545512	RI-12HA3S1-2K1024-H1181	IP67	1024	-	1/2"	5-30 VDC	Line Driver (7272)	male, M12 x 1
1545513	RI-12HA4E1-2B100-H1181	IP67	100	-	5/8"	10-30 VDC	Line Driver (IC-DL)	male, M12 x 1
1545514	RI-12HA4T-4A1000-12M23	IP67	1000	-	5/8"	5 VDC	TTL (26C31)	male, M23
1545515	RI-12I12T-2K1000-C1M	IP65	1000	-	12 mm	5-30 VDC	Line Driver (7272)	1 m cable
1545301	RI-12I14E-4B4096-H1181	IP65	4096	-	14 mm	5-30 VDC	TTL (26C31)	male, M12 x 1
1545516	RI-12I15S1-2K1024-H1181	IP65	1024	-	15 mm	5-30 VDC	Line Driver (7272)	male, M12 x 1
1546502	RI-43HA4E2-2F1024-H1181/N33/N42	IP65	1024	-	5/8" with isolation insert	5-30 VDC	Line Driver (7272)	male, M12 x 1
1546488	RI-43HA6E2-2F1024-H1181/N33/N42	IP65	1024	-	1" with isolation insert	5-30 VDC	Line Driver (7272)	male, M12 x 1
1546487	RI-43HA6E2-2F1024-H1181/N42	IP65	1024	-	1" with isolation insert	5-30 VDC	Line Driver (7272)	male, M12 x 1



Connectivity

Connectivity is an essential part of any automation solution, seamlessly tying together even the most complicated applications. Turck offers an unparalleled breadth of connectivity solutions, combining high standards of quality and competitive pricing with a fast, flexible approach.

Turck's connectivity In-Stock program includes a variety of signal and power offerings along with DeviceNet and Ethernet options, ensuring we have the correct solution on hand for all of your connectivity needs.

Turck's In-Stock Connectivity offering includes:

- M8 Picofast
- M12 Eurofast
- 7/8" Minifast
- M23 Multifast
- Ethernet connectivity
- DeviceNet connectivity
- Valve plugs
- A-Size Powerfast
- D-Size Powerfast

Connectivity

M8 Picofast Single Ended Cordsets



3 or 4-pin
 PVC or TPU cable jacket
 Nickel plated brass or stainless steel coupling nut
 Rated for up to 125 V, 4 A
 NEMA 1, 3, 4, 6P and IEC IP67

Item ID	Product Description	Pin Count	Gender	Plug Body	Cable Type	Coupling Nut Material	Cable Length
U2515-29	PKG 3M-2	3-pin	Female	Straight	PVC	Nickel Plated Brass	2 m
U2515-71	PKG 3M-5	3-pin	Female	Straight	PVC	Nickel Plated Brass	5 m
U2515-22	PKG 3M-10	3-pin	Female	Straight	PVC	Nickel Plated Brass	10 m
U0891-05	PKG 3M-2	3-pin	Female	Straight	PVC	Stainless Steel	2 m
U-06270	PKG 3M-5	3-pin	Female	Straight	PVC	Stainless Steel	5 m
U-09562	PKG 3M-10	3-pin	Female	Straight	PVC	Stainless Steel	10 m
U2515-3	PKG 3M-2/S90	3-pin	Female	Straight	TPU	Nickel Plated Brass	2 m
U2515-70	PKG 3M-5/S90	3-pin	Female	Straight	TPU	Nickel Plated Brass	5 m
U2515-81	PKG 3M-10/S90	3-pin	Female	Straight	TPU	Nickel Plated Brass	10 m
U-86844	PKG 3M-2/S90	3-pin	Female	Straight	TPU	Stainless Steel	2 m
U-53675	PKG 3M-5/S90	3-pin	Female	Straight	TPU	Stainless Steel	5 m
U2-05826	PKG 3M-10/S90	3-pin	Female	Straight	TPU	Stainless Steel	10 m
U0071-0	PKW 3M-2	3-pin	Female	Right Angle	PVC	Nickel Plated Brass	2 m
U0071-4	PKW 3M-5	3-pin	Female	Right Angle	PVC	Nickel Plated Brass	5 m
U0074-10	PKW 3M-10	3-pin	Female	Right Angle	PVC	Nickel Plated Brass	10 m
U0071	PKW 3M-2/S90	3-pin	Female	Right Angle	TPU	Nickel Plated Brass	2 m
U0071-3	PKW 3M-5/S90	3-pin	Female	Right Angle	TPU	Nickel Plated Brass	5 m
U0074-1	PKW 3M-10/S90	3-pin	Female	Right Angle	TPU	Nickel Plated Brass	10 m
U0135-6	PSG 3M-2	3-pin	Male	Straight	PVC	Nickel Plated Brass	2 m
U0135-66	PSG 3M-5	3-pin	Male	Straight	PVC	Nickel Plated Brass	5 m
U0135-5	PSG 3M-10	3-pin	Male	Straight	PVC	Nickel Plated Brass	10 m
U0891-07	PSG 3M-2	3-pin	Male	Straight	PVC	Stainless Steel	2 m
U-22756	PSG 3M-5	3-pin	Male	Straight	PVC	Stainless Steel	5 m
U2-08272	PSG 3M-10	3-pin	Male	Straight	PVC	Stainless Steel	10 m
U2503-14	PKG 4M-2	4-pin	Female	Straight	PVC	Nickel Plated Brass	2 m
U0058-10	PKG 4M-5	4-pin	Female	Straight	PVC	Nickel Plated Brass	5 m
U99-10780	PKG 4M-10	4-pin	Female	Straight	PVC	Nickel Plated Brass	10 m
U2503-1	PKG 4M-2/S90	4-pin	Female	Straight	TPU	Nickel Plated Brass	2 m
U0058-1	PKG 4M-5/S90	4-pin	Female	Straight	TPU	Nickel Plated Brass	5 m
U0063	PKG 4M-10/S90	4-pin	Female	Straight	TPU	Nickel Plated Brass	10 m
U2512-33	PKW 4M-2	4-pin	Female	Right Angle	PVC	Nickel Plated Brass	2 m
U3501-52	PKW 4M-5	4-pin	Female	Right Angle	PVC	Nickel Plated Brass	5 m
U99-11072	PKW 4M-10	4-pin	Female	Right Angle	PVC	Nickel Plated Brass	10 m
U2511-1	PKW 4M-2/S90	4-pin	Female	Right Angle	TPU	Nickel Plated Brass	2 m
U0959-50	PKW 4M-5/S90	4-pin	Female	Right Angle	TPU	Nickel Plated Brass	5 m
U2512-7	PKW 4M-10/S90	4-pin	Female	Right Angle	TPU	Nickel Plated Brass	10 m
U0136-00	PSG 4M-2	4-pin	Male	Straight	PVC	Nickel Plated Brass	2 m
U2-05064	PSG 4M-5	4-pin	Male	Straight	PVC	Nickel Plated Brass	5 m

Connectivity

M8 Picofast Single Ended Cordsets (continued)

Item ID	Product Description	Pin Count	Gender	Plug Body	Cable Type	Coupling Nut Material	Cable Length
U99-11342	PSG 4M-10	4-pin	Male	Straight	PVC	Nickel Plated Brass	10 m

M8 Picofast Extension Cordsets



3 or 4-pin
PVC or TPU cable jacket
Nickel plated brass or stainless steel coupling nut
Rated for up to 125 V, 4 A
NEMA 1, 3, 4, 6P and IEC IP67

Item ID	Product Description	Pin Count	Gender	Plug Body	Cable Type	Coupling Nut Material	Cable Length
U2515-20	PKG 3M-2-PSG 3M	3-pin	Male/Female	Straight	PVC	Nickel Plated Brass	2 m
U2516-35	PKG 3M-5-PSG 3M	3-pin	Male/Female	Straight	PVC	Nickel Plated Brass	5 m
U-14681	PKG 3M-2-PSGV 3M	3-pin	Male/Female	Straight	PVC	Stainless Steel	2 m
U-57989	PKG 3M-5-PSGV 3M	3-pin	Male/Female	Straight	PVC	Stainless Steel	5 m
U2515-28	PKG 3M-2-PSG 3M/S90	3-pin	Male/Female	Straight	TPU	Nickel Plated Brass	2 m
U0901-27	PKG 3M-5-PSG 3M/S90	3-pin	Male/Female	Straight	TPU	Nickel Plated Brass	5 m
U-86845	PKG 3M-2-PSGV 3M/S90	3-pin	Male/Female	Straight	TPU	Stainless Steel	2 m
U-86846	PKG 3M-5-PSGV 3M/S90	3-pin	Male/Female	Straight	TPU	Stainless Steel	5 m
U99-10815	PKG 4M-2-PSG 4M	4-pin	Male/Female	Straight	PVC	Nickel Plated Brass	2 m
U0881-44	PKG 4M-5-PSG 4M	4-pin	Male/Female	Straight	PVC	Nickel Plated Brass	5 m
U99-10816	PKG 4M-2-PSG 4M/S90	4-pin	Male/Female	Straight	TPU	Nickel Plated Brass	2 m
U0912-58	PKG 4M-5-PSG 4M/S90	4-pin	Male/Female	Straight	TPU	Nickel Plated Brass	5 m

M8 Picofast Receptacles



3 or 4-pin
Nickel plated brass or stainless steel housing material
Front or rear mounting options
Rated for up to 125 V, 4 A
NEMA 1, 3, 4, 6P and IEC IP67

Item ID	Product Description	Pin Count	Gender	Mounting Style	Housing Material	Wire Length
U1014	MFKS 3-0.2	3-pin	Female	Front	Nickel Plated Brass	0.2 m
U0967-42	MFKSV 3-0.2	3-pin	Female	Front	Stainless Steel	0.2 m
U0591	MFS 3F-0.2	3-pin	Male	Rear	Nickel Plated Brass	0.2 m
U7800	MFSS 3-0.2	3-pin	Male	Front	Nickel Plated Brass	0.2 m
U0967-48	MFSV 3F-0.2	3-pin	Male	Rear	Stainless Steel	0.2 m
U0967-45	MFSSV 3-0.2	3-pin	Male	Front	Stainless Steel	0.2 m
U1012	MFKS 4-0.2	4-pin	Female	Front	Nickel Plated Brass	0.2 m
U0611	MFS 4F-0.2	4-pin	Male	Rear	Nickel Plated Brass	0.2 m
U7801	MFSS 4-0.2	4-pin	Male	Front	Nickel Plated Brass	0.2 m

Connectivity

M8 Picofast Field Wireable



3 or 4-pin
Screw terminal termination style up to 22 AWG
3-5 mm cable diameter range
Rated for 60 VAC/75 VDC, 4 A
IEC IP67

Item ID	Product Description	Pin Count	Gender	Plug Body	Coupling Nut Material
U0879-54	B 5133-0	3-pin	Female	Straight	Nickel Plated Brass
U6512	BS 5133-0	3-pin	Male	Straight	Nickel Plated Brass
U0879-55	B 5143-0	4-pin	Female	Straight	Nickel Plated Brass
U6513	BS 5143-0	4-pin	Male	Straight	Nickel Plated Brass

M12 Eurofast Single Ended Cordsets



3, 4, 5, or 8-pin
Nickel plated brass or stainless steel coupling nut
PVC or TPU cable jacket
Yellow or black overmold options
LEDs available
Rated for up to 250 V, 4 A
NEMA 1, 3, 4, 6P and IEC IP68

Item ID	Product Description	Pin Count	Gender	Plug Body	Plug Body Color	Cable Type	Cable Color	Coupling Nut Material	Cable Length
U2151	RK 4T-2	3-pin	Female	Straight	Yellow	PVC	Gray	Nickel Plated Brass	2 m
U2158-1	RK 4T-5	3-pin	Female	Straight	Yellow	PVC	Gray	Nickel Plated Brass	5 m
U2160	RK 4T-10	3-pin	Female	Straight	Yellow	PVC	Gray	Nickel Plated Brass	10 m
U5161-19	RKV 4T-2	3-pin	Female	Straight	Yellow	PVC	Gray	Stainless Steel	2 m
U-02558	RKV 4T-5	3-pin	Female	Straight	Yellow	PVC	Gray	Stainless Steel	5 m
U5165-0	RKV 4T-10	3-pin	Female	Straight	Yellow	PVC	Gray	Stainless Steel	10 m
U2154-1	RK 4T-2/S90	3-pin	Female	Straight	Yellow	TPU	Gray	Nickel Plated Brass	2 m
U2158-0	RK 4T-5/S90	3-pin	Female	Straight	Yellow	TPU	Gray	Nickel Plated Brass	5 m
U2160-01	RK 4T-10/S90	3-pin	Female	Straight	Yellow	TPU	Gray	Nickel Plated Brass	10 m
U5161-21	RKV 4T-2/S90	3-pin	Female	Straight	Yellow	TPU	Gray	Stainless Steel	2 m
U-04823	RKV 4T-5/S90	3-pin	Female	Straight	Yellow	TPU	Gray	Stainless Steel	5 m
U5165	RKV 4T-10/S90	3-pin	Female	Straight	Yellow	TPU	Gray	Stainless Steel	10 m
U2210	WK 4T-2	3-pin	Female	Right Angle	Yellow	PVC	Gray	Nickel Plated Brass	2 m
U2216	WK 4T-5	3-pin	Female	Right Angle	Yellow	PVC	Gray	Nickel Plated Brass	5 m
U2218-03	WK 4T-10	3-pin	Female	Right Angle	Yellow	PVC	Gray	Nickel Plated Brass	10 m
U2512	WKV 4T-2	3-pin	Female	Right Angle	Yellow	PVC	Gray	Stainless Steel	2 m
U0885-54	WKV 4T-5	3-pin	Female	Right Angle	Yellow	PVC	Gray	Stainless Steel	5 m
U0891-33	WKV 4T-10	3-pin	Female	Right Angle	Yellow	PVC	Gray	Stainless Steel	10 m
U2215	WK 4T-2/S90	3-pin	Female	Right Angle	Yellow	TPU	Gray	Nickel Plated Brass	2 m
U2216-1	WK 4T-5/S90	3-pin	Female	Right Angle	Yellow	TPU	Gray	Nickel Plated Brass	5 m
U2218-04	WK 4T-10/S90	3-pin	Female	Right Angle	Yellow	TPU	Gray	Nickel Plated Brass	10 m
U-40136	WKV 4T-2/S90	3-pin	Female	Right Angle	Yellow	TPU	Gray	Stainless Steel	2 m
U-67129	WKV 4T-5/S90	3-pin	Female	Right Angle	Yellow	TPU	Gray	Stainless Steel	5 m
U2512-11	WKV 4T-10/S90	3-pin	Female	Right Angle	Yellow	TPU	Gray	Stainless Steel	10 m

Connectivity

M12 Eurofast Single Ended Cordsets (continued)

Item ID	Product Description	Pin Count	Gender	Plug Body	Plug Body Color	Cable Type	Cable Color	Coupling Nut Material	Cable Length
U2210-12	WK 4T-2-P7X2	3-pin	Female	Right Angle	LED/Clear	PVC	Gray	Nickel Plated Brass	2 m
U2216-30	WK 4T-5-P7X2	3-pin	Female	Right Angle	LED/Clear	PVC	Gray	Nickel Plated Brass	5 m
U2218-06	WK 4T-10-P7X2	3-pin	Female	Right Angle	LED/Clear	PVC	Gray	Nickel Plated Brass	10 m
U2512-01	WKV 4T-2-P7X2	3-pin	Female	Right Angle	LED/Clear	PVC	Gray	Stainless Steel	2 m
U-40321	WKV 4T-5-P7X2	3-pin	Female	Right Angle	LED/Clear	PVC	Gray	Stainless Steel	5 m
U2512-20	WKV 4T-10-P7X2	3-pin	Female	Right Angle	LED/Clear	PVC	Gray	Stainless Steel	10 m
U2088-0	RS 4T-2	3-pin	Male	Straight	Yellow	PVC	Gray	Nickel Plated Brass	2 m
U2089-09	RS 4T-5	3-pin	Male	Straight	Yellow	PVC	Gray	Nickel Plated Brass	5 m
U2088-5	RS 4T-10	3-pin	Male	Straight	Yellow	PVC	Gray	Nickel Plated Brass	10 m
U2385	RSV 4T-2	3-pin	Male	Straight	Yellow	PVC	Gray	Stainless Steel	2 m
U2387	RSV 4T-5	3-pin	Male	Straight	Yellow	PVC	Gray	Stainless Steel	5 m
U-91240	RSV 4T-10	3-pin	Male	Straight	Yellow	PVC	Gray	Stainless Steel	10 m
U2172	RK 4.4T-2	4-pin	Female	Straight	Yellow	PVC	Gray	Nickel Plated Brass	2 m
U2167-2	RK 4.4T-5	4-pin	Female	Straight	Yellow	PVC	Gray	Nickel Plated Brass	5 m
U2173-10	RK 4.4T-10	4-pin	Female	Straight	Yellow	PVC	Gray	Nickel Plated Brass	10 m
U5125-29	RKV 4.4T-2	4-pin	Female	Straight	Yellow	PVC	Gray	Stainless Steel	2 m
U2389-08	RKV 4.4T-5	4-pin	Female	Straight	Yellow	PVC	Gray	Stainless Steel	5 m
U2388-17	RKV 4.4T-10	4-pin	Female	Straight	Yellow	PVC	Gray	Stainless Steel	10 m
U2199	RK 4.4T-2/S90	4-pin	Female	Straight	Yellow	TPU	Gray	Nickel Plated Brass	2 m
U2167-31	RK 4.4T-5/S90	4-pin	Female	Straight	Yellow	TPU	Gray	Nickel Plated Brass	5 m
U2173-11	RK 4.4T-10/S90	4-pin	Female	Straight	Yellow	TPU	Gray	Nickel Plated Brass	10 m
U5125-36	RKV 4.4T-2/S90	4-pin	Female	Straight	Yellow	TPU	Gray	Stainless Steel	2 m
U-12330	RKV 4.4T-5/S90	4-pin	Female	Straight	Yellow	TPU	Gray	Stainless Steel	5 m
U2388-20	RKV 4.4T-10/S90	4-pin	Female	Straight	Yellow	TPU	Gray	Stainless Steel	10 m
U-29271	RK 4.4T-2/S760/S771	4-pin	Female	Straight	Black	PVC	Black	Nickel Plated Brass	2 m
U0930-80	RK 4.4T-5/S760/S771	4-pin	Female	Straight	Black	PVC	Black	Nickel Plated Brass	5 m
U-05651	RK 4.4T-10/S760/S771	4-pin	Female	Straight	Black	PVC	Black	Nickel Plated Brass	10 m
U2432	WK 4.4T-2	4-pin	Female	Right Angle	Yellow	PVC	Gray	Nickel Plated Brass	2 m
U2436	WK 4.4T-5	4-pin	Female	Right Angle	Yellow	PVC	Gray	Nickel Plated Brass	5 m
U2435	WK 4.4T-10	4-pin	Female	Right Angle	Yellow	PVC	Gray	Nickel Plated Brass	10 m
U2475-10	WKV 4.4T-2	4-pin	Female	Right Angle	Yellow	PVC	Gray	Stainless Steel	2 m
U0878-33	WKV 4.4T-5	4-pin	Female	Right Angle	Yellow	PVC	Gray	Stainless Steel	5 m
U2475-14	WKV 4.4T-10	4-pin	Female	Right Angle	Yellow	PVC	Gray	Stainless Steel	10 m
U2432-1	WK 4.4T-2/S90	4-pin	Female	Right Angle	Yellow	TPU	Gray	Nickel Plated Brass	2 m
U2436-81	WK 4.4T-5/S90	4-pin	Female	Right Angle	Yellow	TPU	Gray	Nickel Plated Brass	5 m
U2435-0	WK 4.4T-10/S90	4-pin	Female	Right Angle	Yellow	TPU	Gray	Nickel Plated Brass	10 m
U2475-1	WKV 4.4T-2/S90	4-pin	Female	Right Angle	Yellow	TPU	Gray	Stainless Steel	2 m
U-54327	WKV 4.4T-5/S90	4-pin	Female	Right Angle	Yellow	TPU	Gray	Stainless Steel	5 m
U2512-08	WKV 4.4T-10/S90	4-pin	Female	Right Angle	Yellow	TPU	Gray	Stainless Steel	10 m
U-34265	WK 4.4T-2/S760/S771	4-pin	Female	Right Angle	Black	PVC	Black	Nickel Plated Brass	2 m
U0987-18	WK 4.4T-5/S760/S771	4-pin	Female	Right Angle	Black	PVC	Black	Nickel Plated Brass	5 m
U-11622	WK 4.4T-10/S760/S771	4-pin	Female	Right Angle	Black	PVC	Black	Nickel Plated Brass	10 m
U2097	RS 4.4T-2	4-pin	Male	Straight	Yellow	PVC	Gray	Nickel Plated Brass	2 m
U2102-2	RS 4.4T-5	4-pin	Male	Straight	Yellow	PVC	Gray	Nickel Plated Brass	5 m

Connectivity

M12 Eurofast Single Ended Cordsets (continued)

Item ID	Product Description	Pin Count	Gender	Plug Body	Plug Body Color	Cable Type	Cable Color	Coupling Nut Material	Cable Length
U2127-0	RS 4.4T-10	4-pin	Male	Straight	Yellow	PVC	Gray	Nickel Plated Brass	10 m
U2388-2	RSV 4.4T-2	4-pin	Male	Straight	Yellow	PVC	Gray	Stainless Steel	2 m
U2388-5	RSV 4.4T-5	4-pin	Male	Straight	Yellow	PVC	Gray	Stainless Steel	5 m
U2388-92	RSV 4.4T-10	4-pin	Male	Straight	Yellow	PVC	Gray	Stainless Steel	10 m
U-68435	RS 4.4T-2/S760/S771	4-pin	Male	Straight	Black	PVC	Black	Nickel Plated Brass	2 m
U-88140	RS 4.4T-5/S760/S771	4-pin	Male	Straight	Black	PVC	Black	Nickel Plated Brass	5 m
U-82562	RS 4.4T-10/S760/S771	4-pin	Male	Straight	Black	PVC	Black	Nickel Plated Brass	10 m
U2187	RK 4.5T-2	5-pin	Female	Straight	Yellow	PVC	Gray	Nickel Plated Brass	2 m
U2188-94	RK 4.5T-5	5-pin	Female	Straight	Yellow	PVC	Gray	Nickel Plated Brass	5 m
U5238	RK 4.5T-10	5-pin	Female	Straight	Yellow	PVC	Gray	Nickel Plated Brass	10 m
U2388-15	RKV 4.5T-2	5-pin	Female	Straight	Yellow	PVC	Gray	Stainless Steel	2 m
U5143-23	RKV 4.5T-5	5-pin	Female	Straight	Yellow	PVC	Gray	Stainless Steel	5 m
U5143-22	RKV 4.5T-10	5-pin	Female	Straight	Yellow	PVC	Gray	Stainless Steel	10 m
U0969-33	RK 4.5T-2/S760/S771	5-pin	Female	Straight	Black	PVC	Black	Nickel Plated Brass	2 m
U-09403	RK 4.5T-5/S760/S771	5-pin	Female	Straight	Black	PVC	Black	Nickel Plated Brass	5 m
U-11621	RK 4.5T-10/S760/S771	5-pin	Female	Straight	Black	PVC	Black	Nickel Plated Brass	10 m
U2436-4	WK 4.5T-2	5-pin	Female	Right Angle	Yellow	PVC	Gray	Nickel Plated Brass	2 m
U2436-08	WK 4.5T-5	5-pin	Female	Right Angle	Yellow	PVC	Gray	Nickel Plated Brass	5 m
U2436-50	WK 4.5T-10	5-pin	Female	Right Angle	Yellow	PVC	Gray	Nickel Plated Brass	10 m
U2476-6	WKV 4.5T-2	5-pin	Female	Right Angle	Yellow	PVC	Gray	Stainless Steel	2 m
U-20411	WKV 4.5T-5	5-pin	Female	Right Angle	Yellow	PVC	Gray	Stainless Steel	5 m
U0960-16	WKV 4.5T-10	5-pin	Female	Right Angle	Yellow	PVC	Gray	Stainless Steel	10 m
U2-07765	WK 4.5T-2/S760/S771	5-pin	Female	Right Angle	Black	PVC	Black	Nickel Plated Brass	2 m
U-09404	WK 4.5T-5/S760/S771	5-pin	Female	Right Angle	Black	PVC	Black	Nickel Plated Brass	5 m
U-11623	WK 4.5T-10/S760/S771	5-pin	Female	Right Angle	Black	PVC	Black	Nickel Plated Brass	10 m
U2186	RS 4.5T-2	5-pin	Male	Straight	Yellow	PVC	Gray	Nickel Plated Brass	2 m
U2186-30	RS 4.5T-5	5-pin	Male	Straight	Yellow	PVC	Gray	Nickel Plated Brass	5 m
U2186-20	RS 4.5T-10	5-pin	Male	Straight	Yellow	PVC	Gray	Nickel Plated Brass	10 m
U2388-96	RSV 4.5T-2	5-pin	Male	Straight	Yellow	PVC	Gray	Stainless Steel	2 m
U-31823	RSV 4.5T-5	5-pin	Male	Straight	Yellow	PVC	Gray	Stainless Steel	5 m
U2388-93	RSV 4.5T-10	5-pin	Male	Straight	Yellow	PVC	Gray	Stainless Steel	10 m
U2-06189	RS 4.5T-2/S760/S771	5-pin	Male	Straight	Black	PVC	Black	Nickel Plated Brass	2 m
U-88141	RS 4.5T-5/S760/S771	5-pin	Male	Straight	Black	PVC	Black	Nickel Plated Brass	5 m
U-75461	RS 4.5T-10/S760/S771	5-pin	Male	Straight	Black	PVC	Black	Nickel Plated Brass	10 m
U5311-50	RKC 8T-2	8-pin	Female	Straight	Yellow	PVC	Gray	Nickel Plated Brass	2 m
U5311-52	RKC 8T-5	8-pin	Female	Straight	Yellow	PVC	Gray	Nickel Plated Brass	5 m
U5311-73	RKC 8T-10	8-pin	Female	Straight	Yellow	PVC	Gray	Nickel Plated Brass	10 m
U2143-66	RSC 8T-2	8-pin	Male	Straight	Yellow	PVC	Gray	Nickel Plated Brass	2 m
U0894-04	RSC 8T-5	8-pin	Male	Straight	Yellow	PVC	Gray	Nickel Plated Brass	5 m
U99-12502	RSC 8T-10	8-pin	Male	Straight	Yellow	PVC	Gray	Nickel Plated Brass	10 m

Connectivity

M12 Eurofast Extension Cordsets



3, 4, 5, or 8-pin
 Nickel plated brass or stainless steel coupling nut
 Yellow or black overmold options
 LEDs available
 Rated for up to 250 V, 4 A
 NEMA 1, 3, 4, 6P and IEC IP68

Item ID	Product Description	Pin Count	Gender	Plug Body	Plug Body Color	Cable Type	Coupling Nut Material	Cable Length
U2151-2	RK 4T-1-RS 4T	3-pin	Male/Female	Straight	Yellow	PVC	Nickel Plated Brass	1 m
U2151-3	RK 4T-2-RS 4T	3-pin	Male/Female	Straight	Yellow	PVC	Nickel Plated Brass	2 m
U2158-15	RK 4T-5-RS 4T	3-pin	Male/Female	Straight	Yellow	PVC	Nickel Plated Brass	5 m
U2151-20	RK 4T-1-RS 4T/S90	3-pin	Male/Female	Straight	Yellow	TPU	Nickel Plated Brass	1 m
U2151-39	RK 4T-2-RS 4T/S90	3-pin	Male/Female	Straight	Yellow	TPU	Nickel Plated Brass	2 m
U0873-90	RK 4T-5-RS 4T/S90	3-pin	Male/Female	Straight	Yellow	TPU	Nickel Plated Brass	5 m
U2444-1	RK 4.4T-1-RS 4.4T	4-pin	Male/Female	Straight	Yellow	PVC	Nickel Plated Brass	1 m
U2445	RK 4.4T-2-RS 4.4T	4-pin	Male/Female	Straight	Yellow	PVC	Nickel Plated Brass	2 m
U2167-3	RK 4.4T-5-RS 4.4T	4-pin	Male/Female	Straight	Yellow	PVC	Nickel Plated Brass	5 m
U5125-3	RKV 4.4T-2-RSV 4.4T	4-pin	Male/Female	Straight	Yellow	PVC	Stainless Steel	2 m
U5125-10	RKV 4.4T-5-RSV 4.4T	4-pin	Male/Female	Straight	Yellow	PVC	Stainless Steel	5 m
U2444	RK 4.4T-1-RS 4.4T/S90	4-pin	Male/Female	Straight	Yellow	TPU	Nickel Plated Brass	1 m
U2445-0	RK 4.4T-2-RS 4.4T/S90	4-pin	Male/Female	Straight	Yellow	TPU	Nickel Plated Brass	2 m
U2167-5	RK 4.4T-5-RS 4.4T/S90	4-pin	Male/Female	Straight	Yellow	TPU	Nickel Plated Brass	5 m
U-16009	RK 4.4T-1-RS 4.4T/S760/S771	4-pin	Male/Female	Straight	Black	PVC	Nickel Plated Brass	1 m
U2-09882	RK 4.4T-2-RS 4.4T/S760/S771	4-pin	Male/Female	Straight	Black	PVC	Nickel Plated Brass	2 m
U-08473	RK 4.4T-5-RS 4.4T/S760/S771	4-pin	Male/Female	Straight	Black	PVC	Nickel Plated Brass	5 m
U2297-7	RK 4.5T-1-RS 4.5T	5-pin	Male/Female	Straight	Yellow	PVC	Nickel Plated Brass	1 m
U2187-1	RK 4.5T-2-RS 4.5T	5-pin	Male/Female	Straight	Yellow	PVC	Nickel Plated Brass	2 m
U2188-9	RK 4.5T-5-RS 4.5T	5-pin	Male/Female	Straight	Yellow	PVC	Nickel Plated Brass	5 m
U2388-28	RKV 4.5T-2-RSV 4.5T	5-pin	Male/Female	Straight	Yellow	PVC	Stainless Steel	2 m
U-06315	RKV 4.5T-5-RSV 4.5T	5-pin	Male/Female	Straight	Yellow	PVC	Stainless Steel	5 m
U-79229	RK 4.5T-1-RS 4.5T/S760/S771	5-pin	Male/Female	Straight	Black	PVC	Nickel Plated Brass	1 m
U0967-27	RK 4.5T-2-RS 4.5T/S760/S771	5-pin	Male/Female	Straight	Black	PVC	Nickel Plated Brass	2 m
U-79001	RK 4.5T-5-RS 4.5T/S760/S771	5-pin	Male/Female	Straight	Black	PVC	Nickel Plated Brass	5 m
U5311-561	RKC 8T-1-RSC 8T	8-pin	Male/Female	Straight	Yellow	PVC	Nickel Plated Brass	1 m
U5311-56	RKC 8T-2-RSC 8T	8-pin	Male/Female	Straight	Yellow	PVC	Nickel Plated Brass	2 m
U0932-32	RKC 8T-5-RSC 8T	8-pin	Male/Female	Straight	Yellow	PVC	Nickel Plated Brass	5 m

Connectivity

M12 Eurofast Receptacles



3, 4, 5, or 8-pin
 Nickel plated brass or stainless steel housing material
 Front, rear, or feed-thru mounting options
 Rated for up to 250 V, 4 A
 NEMA 1, 3, 4, 6P and IEC IP68

Item ID	Product Description	Pin Count	Gender	Mounting Style	Housing Material	Wire Length
U9510	FK 4.4-0.5	4-pin	Female	Front	Nickel Plated Brass	0.5 m
U9505-0	FK 4.4-0.5/18.25	4-pin	Female	Front	Nickel Plated Brass	0.5 m
U-01658	FK 4.4-0.5/14.5/NPT	4-pin	Female	Front	Nickel Plated Brass	0.5 m
U4490-0	FKFD 4.4-0.5	4-pin	Female	Rear	Nickel Plated Brass	0.5 m
U9522	FKV 4.4-0.5	4-pin	Female	Front	Stainless Steel	0.5 m
U9522-1	FKV 4.4-0.5/18.25	4-pin	Female	Front	Stainless Steel	0.5 m
U0965-27	FKV 4.4-0.5/14.5/NPT	4-pin	Female	Front	Stainless Steel	0.5 m
U-14518	FKFDV 4.4-0.5	4-pin	Female	Rear	Stainless Steel	0.5 m
U1109	FS 4.4-0.5	4-pin	Male	Front	Nickel Plated Brass	0.5 m
U9507	FS 4.4-0.5/18.25	4-pin	Male	Front	Nickel Plated Brass	0.5 m
U0890-18	FS 4.4-0.5/14.5/NPT	4-pin	Male	Front	Nickel Plated Brass	0.5 m
U5118-5	FSFD 4.4-0.5	4-pin	Male	Rear	Nickel Plated Brass	0.5 m
U9521	FSV 4.4-0.5	4-pin	Male	Front	Stainless Steel	0.5 m
U9502-1	FSV 4.4-0.5/18.25	4-pin	Male	Front	Stainless Steel	0.5 m
U9521-0	FSV 4.4-0.5/14.5/NPT	4-pin	Male	Front	Stainless Steel	0.5 m
U0968-31	FSFDV 4.4-0.5	4-pin	Male	Rear	Stainless Steel	0.5 m
U1135-1	FK FS 4.4/M12	4-pin	Male to Female	Feed-Thru	Nickel Plated Brass	-
U0912-74	FKV FSV 4.4/M12	4-pin	Male to Female	Feed-Thru	Stainless Steel	-
U1117	FK 4.5-0.5	5-pin	Female	Front	Nickel Plated Brass	0.5 m
U1117-1	FK 4.5-0.5/18.25	5-pin	Female	Front	Nickel Plated Brass	0.5 m
U-03644	FK 4.5-0.5/14.5/NPT	5-pin	Female	Front	Nickel Plated Brass	0.5 m
U4501	FKFD 4.5-0.5	5-pin	Female	Rear	Nickel Plated Brass	0.5 m
U2395-0	FKV 4.5-0.5	5-pin	Female	Front	Stainless Steel	0.5 m
U2395	FKV 4.5-0.5/18.25	5-pin	Female	Front	Stainless Steel	0.5 m
U0918-64	FKV 4.5-0.5/14.5/NPT	5-pin	Female	Front	Stainless Steel	0.5 m
U0985-44	FKFDV 4.5-0.5	5-pin	Female	Rear	Stainless Steel	0.5 m
U1110	FS 4.5-0.5	5-pin	Male	Front	Nickel Plated Brass	0.5 m
U1115	FS 4.5-0.5/18.25	5-pin	Male	Front	Nickel Plated Brass	0.5 m
U0912-35	FS 4.5-0.5/14.5/NPT	5-pin	Male	Front	Nickel Plated Brass	0.5 m
U5118-50	FSFD 4.5-0.5	5-pin	Male	Rear	Nickel Plated Brass	0.5 m
U9523-51	FSV 4.5-0.5	5-pin	Male	Front	Stainless Steel	0.5 m
U9523-52	FSV 4.5-0.5/18.25	5-pin	Male	Front	Stainless Steel	0.5 m
U0912-34	FSV 4.5-0.5/14.5/NPT	5-pin	Male	Front	Stainless Steel	0.5 m
U0941-73	FSFDV 4.5-0.5	5-pin	Male	Rear	Stainless Steel	0.5 m
U1135	FK FS 4.5/M12	5-pin	Male to Female	Feed-Thru	Nickel Plated Brass	-
U2-05377	FKV FSV 4.5/M12	5-pin	Male to Female	Feed-Thru	Stainless Steel	-
U1132-02	FK 8-0.5	8-pin	Female	Front	Nickel Plated Brass	0.5 m
U1132-04	FK 8-0.5/18.25	8-pin	Female	Front	Nickel Plated Brass	0.5 m

Connectivity

M12 Eurofast Receptacles (continued)

Item ID	Product Description	Pin Count	Gender	Mounting Style	Housing Material	Wire Length
U2-08347	FK 8-0.5/14.5/NPT	8-pin	Female	Front	Nickel Plated Brass	0.5 m
U4501-2	FKFD 8-0.5	8-pin	Female	Rear	Nickel Plated Brass	0.5 m
U1130-2	FS 8-0.5	8-pin	Male	Front	Nickel Plated Brass	0.5 m
U1130-23	FS 8-0.5/18.25	8-pin	Male	Front	Nickel Plated Brass	0.5 m
U0958-74	FS 8-0.5/14.5/NPT	8-pin	Male	Front	Nickel Plated Brass	0.5 m
U1130-60	FSFD 8-0.5	8-pin	Male	Rear	Nickel Plated Brass	0.5 m
U1135-3	FK FS 8/M12	8-pin	Male to Female	Feed-Thru	Nickel Plated Brass	-

M12 Eurofast PCB Pin Receptacles



4, 5, or 8-pin
 Nickel plated brass housing material
 Rear mount
 Rated for up to 250 V, 4 A
 NEMA 1, 3, 4, 6P and IEC IP68

Item ID	Product Description	Pin Count	Gender	Mounting Style	Housing Material	Pin Style
U4490	FKFD 4.4	4-pin	Female	Rear	Nickel Plated Brass	Long Pin
U0884-53	FSFDK 4.4	4-pin	Male	Rear	Nickel Plated Brass	Short Pin
U5118-4	FSFD 4.4	4-pin	Male	Rear	Nickel Plated Brass	Long Pin
U4506-1	FKFDK 4.5	5-pin	Female	Rear	Nickel Plated Brass	Short Pin
U4500	FKFD 4.5	5-pin	Female	Rear	Nickel Plated Brass	Long Pin
U0884-52	FSFDK 4.5	5-pin	Male	Rear	Nickel Plated Brass	Short Pin
U5118-51	FSFD 4.5	5-pin	Male	Rear	Nickel Plated Brass	Long Pin
U2-11606	FKFDK 8-PCB	8-pin	Female	Rear	Nickel Plated Brass	Short Pin
U4501-3	FKFD 8	8-pin	Female	Rear	Nickel Plated Brass	Long Pin
U2-09449	FSFDK 8-PCB	8-pin	Male	Rear	Nickel Plated Brass	Short Pin
U4501-4	FSFD 8	8-pin	Male	Rear	Nickel Plated Brass	Long Pin

Connectivity

M12 Eurofast Field Wireable



4 or 5-pin
 Straight and right angle
 Screw terminal termination style up to 22 AWG
 4-6 mm and 6-8 mm cable diameter range
 Rated for 250 V, 4 A
 IEC IP67

Item ID	Product Description	Pin Count	Gender	Plug Body	Coupling Nut Material
U6545	B 8141-0	4-pin	Female	Straight	Nylon
U6547	B 8141-0/PG 9	4-pin	Female	Straight	Nylon
U6555	B 8241-0	4-pin	Female	Right Angle	Nylon
U6550	BS 8141-0	4-pin	Male	Straight	Nickel Plated Brass
U6551	BS 8141-0/PG 9	4-pin	Male	Straight	Nickel Plated Brass
U6560	BS 8241-0	4-pin	Male	Right Angle	Nickel Plated Brass
U6565	B 8151-0/PG9	5-pin	Female	Straight	Nylon
U6575	B 8251-0/PG9	5-pin	Female	Right Angle	Nylon
U6570	BS 8151-0/PG9	5-pin	Male	Straight	Nickel Plated Brass
U6580	BS 8251-0/PG9	5-pin	Male	Right Angle	Nickel Plated Brass

7/8" Minifast Single Ended Cordsets



3, 4, or 5-pin
 Nickel plated brass coupling nut
 Yellow PVC cable jacket
 16 AWG or 18 AWG wire options
 Rated for up to 10 A, 600 V
 NEMA 1, 3, 4, 6P and IEC IP67

Item ID	Product Description	Pin Count	Gender	Plug Body	Cable Type	Coupling Nut Material	Cable Length
U2027	RKM 30-2M	3-pin	Female	Straight	PVC	Nickel Plated Brass	2 m
U5001	RKM 36-2M	3-pin	Female	Straight	PVC	Nickel Plated Brass	2 m
U2029-0	RKM 30-5M	3-pin	Female	Straight	PVC	Nickel Plated Brass	5 m
U5002-2	RKM 36-5M	3-pin	Female	Straight	PVC	Nickel Plated Brass	5 m
U2032-0	RKM 30-10M	3-pin	Female	Straight	PVC	Nickel Plated Brass	10 m
U5014-7	RKM 36-10M	3-pin	Female	Straight	PVC	Nickel Plated Brass	10 m
U5145-15	RKV 30-5M	3-pin	Female	Straight	PVC	Stainless Steel	5 m
U2075-2	RSM 30-2M	3-pin	Male	Straight	PVC	Nickel Plated Brass	2 m
U2081-1	RSM 36-2M	3-pin	Male	Straight	PVC	Nickel Plated Brass	2 m
U0880-77	RSM 30-5M	3-pin	Male	Straight	PVC	Nickel Plated Brass	5 m
U2103-4	RSM 36-5M	3-pin	Male	Straight	PVC	Nickel Plated Brass	5 m
U99-12584	RSM 30-10M	3-pin	Male	Straight	PVC	Nickel Plated Brass	10 m
U2103-5	RSM 36-10M	3-pin	Male	Straight	PVC	Nickel Plated Brass	10 m
U-04878	RSV 30-5M	3-pin	Male	Straight	PVC	Stainless Steel	5 m
U2043	RKM 40-2M	4-pin	Female	Straight	PVC	Nickel Plated Brass	2 m
U5078	RKM 46-2M	4-pin	Female	Straight	PVC	Nickel Plated Brass	2 m
U2045-05	RKM 40-5M	4-pin	Female	Straight	PVC	Nickel Plated Brass	5 m
U5081	RKM 46-5M	4-pin	Female	Straight	PVC	Nickel Plated Brass	5 m

Connectivity

7/8" Minifast Single Ended Cordsets (continued)

Item ID	Product Description	Pin Count	Gender	Plug Body	Cable Type	Coupling Nut Material	Cable Length
U2048	RKM 40-10M	4-pin	Female	Straight	PVC	Nickel Plated Brass	10 m
U5082-1	RKM 46-10M	4-pin	Female	Straight	PVC	Nickel Plated Brass	10 m
U-70291	RKV 40-5M	4-pin	Female	Straight	PVC	Stainless Steel	5 m
U2084-1	RSM 40-2M	4-pin	Male	Straight	PVC	Nickel Plated Brass	2 m
U2118	RSM 46-2M	4-pin	Male	Straight	PVC	Nickel Plated Brass	2 m
U2087-11	RSM 40-5M	4-pin	Male	Straight	PVC	Nickel Plated Brass	5 m
U2133-3	RSM 46-5M	4-pin	Male	Straight	PVC	Nickel Plated Brass	5 m
U2084-31	RSM 40-10M	4-pin	Male	Straight	PVC	Nickel Plated Brass	10 m
U2133-7	RSM 46-10M	4-pin	Male	Straight	PVC	Nickel Plated Brass	10 m
U-08466	RSV 40-5M	4-pin	Male	Straight	PVC	Stainless Steel	5 m
U2056	RKM 50-2M	5-pin	Female	Straight	PVC	Nickel Plated Brass	2 m
U5122	RKM 56-2M	5-pin	Female	Straight	PVC	Nickel Plated Brass	2 m
U2059	RKM 50-5M	5-pin	Female	Straight	PVC	Nickel Plated Brass	5 m
U5124-0	RKM 56-5M	5-pin	Female	Straight	PVC	Nickel Plated Brass	5 m
U2060	RKM 50-10M	5-pin	Female	Straight	PVC	Nickel Plated Brass	10 m
U5137	RKM 56-10M	5-pin	Female	Straight	PVC	Nickel Plated Brass	10 m
U5157-11	RKV 50-5M	5-pin	Female	Straight	PVC	Stainless Steel	5 m
U2091	RSM 50-2M	5-pin	Male	Straight	PVC	Nickel Plated Brass	2 m
U2093-2	RSM 56-2M	5-pin	Male	Straight	PVC	Nickel Plated Brass	2 m
U2083-50	RSM 50-5M	5-pin	Male	Straight	PVC	Nickel Plated Brass	5 m
U2093-55	RSM 56-5M	5-pin	Male	Straight	PVC	Nickel Plated Brass	5 m
U2083	RSM 50-10M	5-pin	Male	Straight	PVC	Nickel Plated Brass	10 m
U99-12732	RSM 56-10M	5-pin	Male	Straight	PVC	Nickel Plated Brass	10 m
U-04879	RSV 50-5M	5-pin	Male	Straight	PVC	Stainless Steel	5 m

7/8" Minifast Extension Cordsets



3, 4, or 5-pin
 Nickel plated brass coupling nut
 Yellow PVC cable jacket
 16 AWG or 18 AWG wire options
 Rated for up to 10 A, 600 V
 NEMA 1, 3, 4, 6P and IEC IP67

Item ID	Product Description	Pin Count	Gender	Plug Body	Cable Type	Coupling Nut Material	Cable Length
U2255	RSM RKM 30-2M	3-pin	Male/Female	Straight	PVC	Nickel Plated Brass	2 m
U2260-2	RSM RKM 36-2M	3-pin	Male/Female	Straight	PVC	Nickel Plated Brass	2 m
U2257	RSM RKM 30-5M	3-pin	Male/Female	Straight	PVC	Nickel Plated Brass	5 m
U2260-00	RSM RKM 36-5M	3-pin	Male/Female	Straight	PVC	Nickel Plated Brass	5 m
U2280-0	RSM RKM 40-2M	4-pin	Male/Female	Straight	PVC	Nickel Plated Brass	2 m
U2283-2	RSM RKM 46-2M	4-pin	Male/Female	Straight	PVC	Nickel Plated Brass	2 m
U2281	RSM RKM 40-5M	4-pin	Male/Female	Straight	PVC	Nickel Plated Brass	5 m
U2281-30	RSM RKM 46-5M	4-pin	Male/Female	Straight	PVC	Nickel Plated Brass	5 m
U2282-0	RSM RKM 50-2M	5-pin	Male/Female	Straight	PVC	Nickel Plated Brass	2 m
U2293	RSM RKM 56-2M	5-pin	Male/Female	Straight	PVC	Nickel Plated Brass	2 m
U2282	RSM RKM 50-5M	5-pin	Male/Female	Straight	PVC	Nickel Plated Brass	5 m

Connectivity

7/8" Minifast Extension Cordsets (continued)

Item ID	Product Description	Pin Count	Gender	Plug Body	Cable Type	Coupling Nut Material	Cable Length
U2283-34	RSM RKM 56-5M	5-pin	Male/Female	Straight	PVC	Nickel Plated Brass	5 m

7/8" Minifast Receptacles



3, 4, or 5-pin
 Nickel plated brass housing material
 16 AWG or 18 AWG wire options
 Front or feed-thru mounting options
 Rated for up to 10 A, 600 V
 NEMA 1, 3, 4, 6P and IEC IP67

Item ID	Product Description	Pin Count	Gender	Mounting Style	Housing Material	Wire Length
U2456	RKF 30-1M	3-pin	Female	18 AWG	Front	1 m
U0931-04	RKF 30-1M/NPT	3-pin	Female	18 AWG	Front	1 m
U5502	RKF 36-1M	3-pin	Female	16 AWG	Front	1 m
U5502-01	RKF 36-1M/NPT	3-pin	Female	16 AWG	Front	1 m
U2306-2	RSF 30-1M	3-pin	Male	18 AWG	Front	1 m
U-01080	RSF 30-1M/NPT	3-pin	Male	18 AWG	Front	1 m
U5202	RSF 36-1M	3-pin	Male	16 AWG	Front	1 m
U5202-02	RSF 36-1M/NPT	3-pin	Male	16 AWG	Front	1 m
U2309-46	RSF RKF 30/22	3-pin	Male to Female	18 AWG	Feed-Thru	-
U2303-1	RKF 40-1M	4-pin	Female	18 AWG	Front	1 m
U0884-85	RKF 40-1M/NPT	4-pin	Female	18 AWG	Front	1 m
U5504	RKF 46-1M	4-pin	Female	16 AWG	Front	1 m
U5504-05	RKF 46-1M/NPT	4-pin	Female	16 AWG	Front	1 m
U2347	RSF 40-1M	4-pin	Male	18 AWG	Front	1 m
U0909-79	RSF 40-1M/NPT	4-pin	Male	18 AWG	Front	1 m
U5204	RSF 46-1M	4-pin	Male	16 AWG	Front	1 m
U5204-05	RSF 46-1M/NPT	4-pin	Male	16 AWG	Front	1 m
U2309-47	RSF RKF 40/22	4-pin	Male to Female	18 AWG	Feed-Thru	-
U2335	RKF 50-1M	5-pin	Female	18 AWG	Front	1 m
U0893-90	RKF 50-1M/NPT	5-pin	Female	18 AWG	Front	1 m
U5508	RKF 56-1M	5-pin	Female	16 AWG	Front	1 m
U5508-02	RKF 56-1M/NPT	5-pin	Female	16 AWG	Front	1 m
U2309-39	RSF 50-1M	5-pin	Male	18 AWG	Front	1 m
U0902-55	RSF 50-1M/NPT	5-pin	Male	18 AWG	Front	1 m
U5208	RSF 56-1M	5-pin	Male	16 AWG	Front	1 m
U5208-04	RSF 56-1M/NPT	5-pin	Male	16 AWG	Front	1 m
U2309-5	RSF RKF 50/22	5-pin	Male to Female	18 AWG	Feed-Thru	-

Connectivity

7/8" Minifast Field Wireable



3, 4, or 5-pin
Screw terminal termination style up to 22 AWG
6-8 mm and 10-12 mm cable diameter range
Rated for up to 12 A, 250 V
IEC IP67

Item ID	Product Description	Pin Count	Gender	Plug Body	Coupling Nut Material
U6310	B 4131-0/9	3-pin	Female	Straight	Nickel Plated Diecast Zinc
U6310-1	B 4131-0/13.5	3-pin	Female	Straight	Nickel Plated Diecast Zinc
U6315	BS 4131-0/9	3-pin	Male	Straight	Nickel Plated Diecast Zinc
U6315-1	BS 4131-0/13.5	3-pin	Male	Straight	Nickel Plated Diecast Zinc
U6410	B 4141-0/9	4-pin	Female	Straight	Nickel Plated Diecast Zinc
U6413	B 4141-0/13.5	4-pin	Female	Straight	Nickel Plated Diecast Zinc
U6415	BS 4141-0/9	4-pin	Male	Straight	Nickel Plated Diecast Zinc
U6415-0	BS 4141-0/13.5	4-pin	Male	Straight	Nickel Plated Diecast Zinc
U6417	B 4151-0/9	5-pin	Female	Straight	Nickel Plated Diecast Zinc
U6420	B 4151-0/13.5	5-pin	Female	Straight	Nickel Plated Diecast Zinc
U6419	BS 4151-0/9	5-pin	Male	Straight	Nickel Plated Diecast Zinc
U6422	BS 4151-0/13.5	5-pin	Male	Straight	Nickel Plated Diecast Zinc

M12 Eurofast Junction Box



4, 6, and 8-port M12 boxes
Consolidate up to 16 I/O signals
Option for one or two signals per port; with or without LEDs
M23 home-run connector, 12-pin or 19-pin
Nickel plated brass threaded inserts
Rated for 10-30 VDC; 2 A per signal and 9 A total
IEC IP67, IP69K (when all ports are connected or covered with caps)

Item ID	Product Description	# of Ports	Signals Per Port	Homerun Connector
E8028575	4MB12Z-4-CS12	4-Port	1 Signal Per Port	Top Exit 12-Pin Multifast
E8033444	4MB12Z-4-CS12H	4-Port	1 Signal Per Port	Side Exit 12-Pin Multifast
E8026487	4MB12Z-4P2-CS12	4-Port	1 Signal Per Port/PNP LED	Top Exit 12-Pin Multifast
E8026488	4MB12Z-4P2-CS12H	4-Port	1 Signal Per Port/PNP LED	Side Exit 12-Pin Multifast
E8028574	4MB12Z-5-CS19	4-Port	2 Signals Per Port	Top Exit 19-Pin Multifast
E8033446	4MB12Z-5-CS19H	4-Port	2 Signals Per Port	Side Exit 19-Pin Multifast
E8026485	4MB12Z-5P3-CS19	4-Port	2 Signals Per Port/PNP LED	Top Exit 19-Pin Multifast
E8026486	4MB12Z-5P3-CS19H	4-Port	2 Signals Per Port/PNP LED	Side Exit 19-Pin Multifast
U2-19912	6MB12Z-4-CS12	6-Port	1 Signal Per Port	Top Exit 12-Pin Multifast
U2-19918	6MB12Z-4-CS12H	6-Port	1 Signal Per Port	Side Exit 12-Pin Multifast
U2-19913	6MB12Z-4P2-CS12	6-Port	1 Signal Per Port/PNP LED	Top Exit 12-Pin Multifast
U2-19919	6MB12Z-4P2-CS12H	6-Port	1 Signal Per Port/PNP LED	Side Exit 12-Pin Multifast
U2-19915	6MB12Z-5-CS19	6-Port	2 Signals Per Port	Top Exit 19-Pin Multifast
U2-19921	6MB12Z-5-CS19H	6-Port	2 Signals Per Port	Side Exit 19-Pin Multifast
U2-19916	6MB12Z-5P3-CS19	6-Port	2 Signals Per Port/PNP LED	Top Exit 19-Pin Multifast
U2-19922	6MB12Z-5P3-CS19H	6-Port	2 Signals Per Port/PNP LED	Side Exit 19-Pin Multifast

Connectivity

M12 Eurofast Junction Box (continued)

Item ID	Product Description	# of Ports	Signals Per Port	Homerun Connector
E8028573	8MB12Z-4-CS12	8-Port	1 Signal Per Port	Top Exit 12-Pin Multifast
E8033447	8MB12Z-4-CS12H	8-Port	1 Signal Per Port	Side Exit 12-Pin Multifast
E8026483	8MB12Z-4P2-CS12	8-Port	1 Signal Per Port/PNP LED	Top Exit 12-Pin Multifast
E8026484	8MB12Z-4P2-CS12H	8-Port	1 Signal Per Port/PNP LED	Side Exit 12-Pin Multifast
E8028572	8MB12Z-5-CS19	8-Port	2 Signals Per Port	Top Exit 19-Pin Multifast
E8033448	8MB12Z-5-CS19H	8-Port	2 Signals Per Port	Side Exit 19-Pin Multifast
E8026481	8MB12Z-5P3-CS19	8-Port	2 Signals Per Port/PNP LED	Top Exit 19-Pin Multifast
E8026482	8MB12Z-5P3-CS19H	8-Port	2 Signals Per Port/PNP LED	Side Exit 19-Pin Multifast

M23 Multifast Single Ended Cordsets



12 or 19-pin
 Nickel plated brass coupling nut
 Suitable for use with M12 Eurofast junction boxes
 Yellow PVC cable jacket
 12-pin rated for 300 V, 6 A; 19-pin rated for 150 V, 9 A (18 AWG), 2 A (22 AWG)
 IEC IP67

Item ID	Product Description	Pin Count	Gender	Plug Body	Cable Type	Coupling Nut Material	Cable Length
U4708-29	CKCM 12-7-5	12-pin	Female	Straight	PVC	Nickel Plated Brass	5 m
U-62426	CKCM 12-9-5	12-pin	Female	Straight	PVC	Nickel Plated Brass	5 m
U4708-28	CKCM 12-11-5	12-pin	Female	Straight	PVC	Nickel Plated Brass	5 m
U0951-44	CKCM 12-7-10	12-pin	Female	Straight	PVC	Nickel Plated Brass	10 m
U-69057	CKCM 12-9-10	12-pin	Female	Straight	PVC	Nickel Plated Brass	10 m
U0904-40	CKCM 12-11-10	12-pin	Female	Straight	PVC	Nickel Plated Brass	10 m
U4701-54	CKM 19-11-5	19-pin	Female	Straight	PVC	Nickel Plated Brass	5 m
U4701-6	CKM 19-15-5	19-pin	Female	Straight	PVC	Nickel Plated Brass	5 m
U4701-03	CKM 19-19-5	19-pin	Female	Straight	PVC	Nickel Plated Brass	5 m
U4704-33	CKM 19-11-10	19-pin	Female	Straight	PVC	Nickel Plated Brass	10 m
U4705-11	CKM 19-15-10	19-pin	Female	Straight	PVC	Nickel Plated Brass	10 m
U4704-10	CKM 19-19-10	19-pin	Female	Straight	PVC	Nickel Plated Brass	10 m

M23 Multifast Extension Cordsets



12 or 19-pin
 Nickel plated brass coupling nut
 Suitable for use with M12 Eurofast junction boxes
 Yellow PVC cable jacket
 12-pin rated for 300 V, 6 A; 19-pin rated for 150 V, 9 A (18 AWG), 2 A (22 AWG)
 IEC IP67

Item ID	Product Description	Pin Count	Gender	Plug Body	Cable Type	Coupling Nut Material	Cable Length
U0902-50	CSCM CKCM 12-11-5	12-pin	Male/Female	Straight	PVC	Nickel Plated Brass	5 m
U4703-79	CSM CKM 19-19-5	19-pin	Male/Female	Straight	PVC	Nickel Plated Brass	5 m

Connectivity

M23 Multifast Receptacles



12 or 19-pin
 Nickel plated brass housing material
 Front mount
 12-pin rated for 300 V, 6 A; 19-pin rated for 150 V, 9 A (18 AWG), 2 A (22 AWG)
 IEC IP67

Item ID	Product Description	Pin Count	Gender	Mounting Style	Housing Material	Wire Length
U0902-35	CKCF 12-11-1	12-pin	Female	Front	Nickel Plated Brass	1
U4664	CKF 19-19-1	19-pin	Female	Front	Nickel Plated Brass	1

M12 Eurofast VB2 Splitters



M12 connectors, either integral to splitter body or with cable
 Standard, parallel, or series wiring options (4 or 5-wires)
 Rated for 250 V, 4 A
 IEC IP67

Item ID	Product Description	Homerun Connector	Port Connectors	Wiring
U0098	VB2-FSM 4.4/2FKM 4	Integral M12	Integral M12	Standard
U0098-1	VB2-FSM 4.4/2FKM 4.4/S651	Integral M12	Integral M12	Parallel
U0100-1	VB2-FSM 4.4/2FKM 4/S719	Integral M12	Integral M12	Series
U0098-2	VB2-FSM 4.5/2FKM 4.5/S651	Integral M12	Integral M12	Parallel

M12 Eurofast YB2 Splitters



M12 and M8 connector options, integral to splitter body
 Standard wiring
 Rated for up to 30 V, 4 A
 IEC IP67

Item ID	Product Description	Homerun Connector	Port Connectors	Wiring
U0977-78	YB2-FSM 4.4/2PKG 3M	Integral M12	Integral M8	Standard
U0875-78	YB2-FSM 4.5-2FKM 4.5	Integral M12	Integral M12	Standard
U0918-61	YB2-FSM 4.5-2FKM 4.5/S1063	Integral M12	Integral M12	Standard

Connectivity

M12 Eurofast VBRS Splitters



M12 and M8 connector options, either integral to splitter body or with cable
 Standard wiring
 Rated for up to 250 V, 4 A
 IEC IP67

Item ID	Product Description	Homerun Connector	Port Connectors	Wiring
U0117	VBRS 4.4-2RK 4T-0.3/0.3	Integral M12	M12 Cables	Standard
U0117-3	VBRS 4.4-2PKG 3M-0.3/0.3	Integral M12	M8 Cables	Standard
U0117-1	VBRS 4.4-2SKM 3	Integral M12	Integral M8	Standard

Ethernet Patch Cords



Teal TPE industrial ethernet cable jacket (types 440, 441, 840, 841)
 High flexing, up to 10 million cycles for stranded cable
 600 V rated cable (types 440, 441, 840, 841)
 Ruggedized overmolded RJ45
 PoE compliant cable, per IEEE 802.3af
 UL approved
 Full CAT 5e performance, for stranded cables, up to 80-85 m (types 440, 441, 840, 841)
 IEC IP67 rated M12, M8; IEC IP20 rated RJ45

Item ID	Product Description	Cable Type	Termination Type	Cable Length
U-04973	RJ45 RJ45 440-1M	440 - Stranded Unshielded/2UTPx24awg	RJ45/RJ45	1 m
U3-00042	RSCD RSCD 440-1M	440 - Stranded Unshielded/2UTPx24awg	M12/M12	1 m
U-04974	RJ45 RJ45 440-2M	440 - Stranded Unshielded/2UTPx24awg	RJ45/RJ45	2 m
U-04468	RSCD RSCD 440-2M	440 - Stranded Unshielded/2UTPx24awg	M12/M12	2 m
U-04393	RSCD RJ45 440-2M	440 - Stranded Unshielded/2UTPx24awg	M12/RJ45	2 m
U-18013	RJ45 RJ45 440-5M	440 - Stranded Unshielded/2UTPx24awg	RJ45/RJ45	5 m
U-04465	RSCD RSCD 440-5M	440 - Stranded Unshielded/2UTPx24awg	M12/M12	5 m
U-16027	RSCD RJ45 440-5M	440 - Stranded Unshielded/2UTPx24awg	M12/RJ45	5 m
U-04466	RSCD RSCD 440-10M	440 - Stranded Unshielded/2UTPx24awg	M12/M12	10 m
U3-00892	RSCD RJ45 440-10M	440 - Stranded Unshielded/2UTPx24awg	M12/RJ45	10 m
U-09261	RSCD RSCD 440-20M	440 - Stranded Unshielded/2UTPx24awg	M12/M12	20 m
U-06865	RJ45S RJ45S 441-1M	441 - Stranded Shielded/2UTPx24awg	RJ45/RJ45	1 m
U3-00372	RSSD RSSD 441-1M	441 - Stranded Shielded/2UTPx24awg	M12/M12	1 m
U3-00504	RSSD RJ45S 441-1M	441 - Stranded Shielded/2UTPx24awg	M12/RJ45	1 m
U-06842	RJ45S RJ45S 441-2M	441 - Stranded Shielded/2UTPx24awg	RJ45/RJ45	2 m
U-02482	RSSD RSSD 441-2M	441 - Stranded Shielded/2UTPx24awg	M12/M12	2 m
U3-00525	RSSD RJ45S 441-2M	441 - Stranded Shielded/2UTPx24awg	M12/RJ45	2 m
U3-00689	RJ45S RJ45S 441-5M	441 - Stranded Shielded/2UTPx24awg	RJ45/RJ45	5 m
U-06867	RSSD RSSD 441-5M	441 - Stranded Shielded/2UTPx24awg	M12/M12	5 m
U3-00588	RSSD RJ45S 441-5M	441 - Stranded Shielded/2UTPx24awg	M12/RJ45	5 m
U-09405	RJ45S RJ45S 441-10M	441 - Stranded Shielded/2UTPx24awg	RJ45/RJ45	10 m
U-06712	RSSD RSSD 441-10M	441 - Stranded Shielded/2UTPx24awg	M12/M12	10 m
U-02557	RSSD RJ45S 441-10M	441 - Stranded Shielded/2UTPx24awg	M12/RJ45	10 m
U-03619	RSSD RSSD 441-20M	441 - Stranded Shielded/2UTPx24awg	M12/M12	20 m
U-60180	PSGS 4M PSGS 4M 4413-0.2M	4413 - Stranded Shielded/2UTPx26awg	M8/M8	0.2 m

Connectivity

Ethernet Patch Cords (continued)

Item ID	Product Description	Cable Type	Termination Type	Cable Length
U2-24250	PSGS 4M PSGS 4M 4413-0.3M	4413 - Stranded Shielded/2UTPx26awg	M8/M8	0.3 m
U2-23009	PSGS 4M PSGS 4M 4413-0.5M	4413 - Stranded Shielded/2UTPx26awg	M8/M8	0.5 m
U-58839	RSSD PSGS 4M 4413-0.5M	4413 - Stranded Shielded/2UTPx26awg	M12/M8	0.5 m
U-86583	PSGS 4M RJ45S 4413-0.5M	4413 - Stranded Shielded/2UTPx26awg	M8/RJ45	0.5 m
U-86582	PSGS 4M PSGS 4M 4413-0.6M	4413 - Stranded Shielded/2UTPx26awg	M8/M8	0.6 m
U-55718	PSGS 4M PSGS 4M 4413-1M	4413 - Stranded Shielded/2UTPx26awg	M8/M8	1 m
U-55725	PSGS 4M RJ45S 4413-1M	4413 - Stranded Shielded/2UTPx26awg	M8/RJ45	1 m
U-59336	PSGS 4M PSGS 4M 4413-2M	4413 - Stranded Shielded/2UTPx26awg	M8/M8	2 m
U2-24205	PSGS 4M RJ45S 4413-2M	4413 - Stranded Shielded/2UTPx26awg	M8/RJ45	2 m
U-59340	PSGS 4M PSGS 4M 4413-5M	4413 - Stranded Shielded/2UTPx26awg	M8/M8	5 m
U7374-1	RJ45 RJ45 840-1M	840- Stranded Unshielded/4UTPx24awg	RJ45/RJ45	1 m
U7819-1	RSC RJ45 840-1M	840- Stranded Unshielded/4UTPx24awg	M12/RJ45	1 m
U7374-2	RJ45 RJ45 840-2M	840- Stranded Unshielded/4UTPx24awg	RJ45/RJ45	2 m
U7819-2	RSC RJ45 840-2M	840- Stranded Unshielded/4UTPx24awg	M12/RJ45	2 m
U3-00763	RJ45 RJ45 840-5M	840- Stranded Unshielded/4UTPx24awg	RJ45/RJ45	5 m
U7819-5	RSC RJ45 840-5M	840- Stranded Unshielded/4UTPx24awg	M12/RJ45	5 m
U7819-10	RSC RJ45 840-10M	840- Stranded Unshielded/4UTPx24awg	M12/RJ45	10 m
U8636-1	RJ45S RJ45S 841-1M	841 - Stranded Shielded/4UTPx24awg	RJ45/RJ45	1 m
U8626-1	RSS RJ45S 841-1M	841 - Stranded Shielded/4UTPx24awg	M12/RJ45	1 m
U8636-2	RJ45S RJ45S 841-2M	841 - Stranded Shielded/4UTPx24awg	RJ45/RJ45	2 m
U7901-2	RSS RSS 841-2M	841 - Stranded Shielded/4UTPx24awg	M12/M12	2 m
U8626-2	RSS RJ45S 841-2M	841 - Stranded Shielded/4UTPx24awg	M12/RJ45	2 m
U8636-5	RJ45S RJ45S 841-5M	841 - Stranded Shielded/4UTPx24awg	RJ45/RJ45	5 m
U7901-5	RSS RSS 841-5M	841 - Stranded Shielded/4UTPx24awg	M12/M12	5 m
U8626-5	RSS RJ45S 841-5M	841 - Stranded Shielded/4UTPx24awg	M12/RJ45	5 m
U8636-10	RJ45S RJ45S 841-10M	841 - Stranded Shielded/4UTPx24awg	RJ45/RJ45	10 m
U7901-10	RSS RSS 841-10M	841 - Stranded Shielded/4UTPx24awg	M12/M12	10 m
U8626-10	RSS RJ45S 841-10M	841 - Stranded Shielded/4UTPx24awg	M12/RJ45	10 m

Ethernet Panel & Field Wireable Accessories

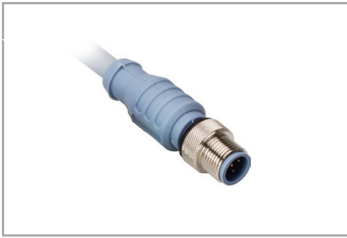


Convert RJ45 to M12 to transition out of the panel
Field wireables for both M12 and RJ45
Receptacles for PCB applications

Item ID	Product Description	Pin Count	Termination Type	Mounting Style
U3-00647	FKSDD RJ45SF 44	4-pin	M12 to RJ45 receptacle	Feed-Thru
U3-00815	FKFDD 44-PCB	4-pin	M12 receptacle	PCB Mount
U2-03887	CMBSD 8141-0/PG9	4-pin	M12 field wireable	-
U3-00777	CONNECTOR, RJ45S IDC	4-pin	RJ45 field wireable	-
U8611	FKFD 84-PCB	8-pin	M12 receptacle	PCB Mount
U8611-1	FKFD 84-PCB/S	8-pin	M12 receptacle	Short PCB Mount
U2-18467	CONNECTOR, FW,RJ45S 84 IDC	8-pin	RJ45 field wireable	-

Connectivity

DeviceNet Single Ended Cordsets: M12



Gray PVC cable jacket, foil shield
 UL PLTC and CSA cable approvals
 Meets requirements of ODVA THIN cable type
 Rated for 250 V, 4 A
 NEMA 1, 3, 4, 6P and IEC IP68, IP69K

Item ID	Product Description	Termination Type	Gender	Plug Body	Cable Type	Cable Length
U0303-2	RSC 572-0.5M	M12	Male	Straight	PVC / Thin	0.5 m
U0303	RSC 572-1M	M12	Male	Straight	PVC / Thin	1 m
U0303-0	RSC 572-2M	M12	Male	Straight	PVC / Thin	2 m

DeviceNet Extension Cordsets: M12 and 7/8" Minifast



Gray PVC cable jacket, foil shield (cable 572), braided shield (cable 579)
 UL PLTC and CSA cable approvals
 Meets requirements of ODVA THIN cable type (cable 572) and THICK cable type (cable 579)
 M12 rated to 4 A, 250 V; 7/8" Minifast rated to 9 A, 600 V
 NEMA 1, 3, 4, 6P and IEC IP67

Item ID	Product Description	Termination Type	Gender	Plug Body	Cable Type	Cable Length
U5450-52	RSM RKM 579-1M	7/8"	Male/Female	Straight	PVC / Thick	1 m
U5450-51	RSM RKM 579-2M	7/8"	Male/Female	Straight	PVC / Thick	2 m
U5450-60	RSM RKM 579-5M	7/8"	Male/Female	Straight	PVC / Thick	5 m
U5450-61	RSM RKM 579-10M	7/8"	Male/Female	Straight	PVC / Thick	10 m
U0321	RSC RKC 572-1M	M12	Male/Female	Straight	PVC / Thin	1 m
U5447-11	RSM RKM 572-1M	7/8"	Male/Female	Straight	PVC / Thin	1 m
U0323	RSC RKC 572-2M	M12	Male/Female	Straight	PVC / Thin	2 m
U5447-13	RSM RKM 572-2M	7/8"	Male/Female	Straight	PVC / Thin	2 m
U0326	RSC RKC 572-5M	M12	Male/Female	Straight	PVC / Thin	5 m
U0326-14	RSC RKC 572-10M	M12	Male/Female	Straight	PVC / Thin	10 m

Connectivity

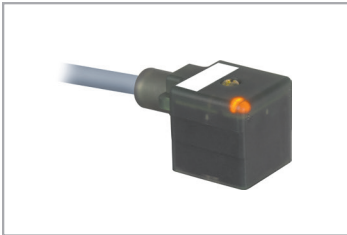
DeviceNet Accessories



M12 rated to 4 A, 250 V; 7/8" Minifast rated to 9 A, 600 V
NEMA 1, 3, 4, 6P and IEC IP67

Item ID	Product Description	Product Type	Termination Type
U0142	RSM FKM RKM 57	Bus Drop Tee	7/8" with M12 Drop
U0141	RSM-2RKM 57	Bus Drop Tee	7/8"
E9003	RSC 2RKC 57	Bus Drop Tee	M12
U2-15764	RSC WKC 57	Gender Changer	M12
U2251-1	RSE 57-TR2	Terminating Resistor	M12
U2251-5	RKE 57-TR2	Terminating Resistor	M12
U0102	RSM 57-TR2	Terminating Resistor	7/8"
U0102-1	RKM 57-TR2	Terminating Resistor	7/8"

Valve Plugs Type A - 18 mm



Environmentally protected electrical junction for use with hydraulic and pneumatic solenoid valves
Available in A, B, I and C designs
Options for wiring with LED, MOV, or diode
PVC or TPU cable jacket
Available with flying leads or with M12 connector termination
Rated for up to 220 V, 4 A
NEMA 1, 3, 4, 6P and IEC IP67

Item ID	Product Description	Pin Count	Wiring	Voltage	Cable Type	Cable Length
U1200-33	VAS 22-A653-2M	2 Conductors + 1 Ground, Ground Contacts Parallel Wired	Straight	0-220 V	PVC	2 m
U1203-01	VAS 22-C653-2M	2 Conductors + 1 Ground, Ground Contacts Parallel Wired	LED	110-220 V	PVC	2 m
U1202-41	VAS 22-D653-2M	2 Conductors + 1 Ground, Ground Contacts Parallel Wired	LED/MOV	24-48 V	PVC	2 m
U1204-05	VAS 22-E653-2M	2 Conductors + 1 Ground, Ground Contacts Parallel Wired	LED/MOV	110-220 V	PVC	2 m
U7106-17	VAS 22-F653-2M	2 Conductors + 1 Ground, Ground Contacts Parallel Wired	LED/DIODE	24-48 VDC	PVC	2 m
U1200-00	VAS 22-A653-5M	2 Conductors + 1 Ground, Ground Contacts Parallel Wired	Straight	0-220 V	PVC	5 m
U1203-0	VAS 22-C653-5M	2 Conductors + 1 Ground, Ground Contacts Parallel Wired	LED	110-220 V	PVC	5 m
U1202-04	VAS 22-D653-5M	2 Conductors + 1 Ground, Ground Contacts Parallel Wired	LED/MOV	24-48 V	PVC	5 m
U1204-02	VAS 22-E653-5M	2 Conductors + 1 Ground, Ground Contacts Parallel Wired	LED/MOV	110-220 V	PVC	5 m
U7106-18	VAS 22-F653-5M	2 Conductors + 1 Ground, Ground Contacts Parallel Wired	LED/DIODE	24-48 VDC	PVC	5 m
U1200-40	VAS 22-A669-2M	2 Conductors + 1 Ground, Ground Contacts Parallel Wired	Straight	0-220 V	TPU	2 m
U7153-03	VAS 22-C669-2M	2 Conductors + 1 Ground, Ground Contacts Parallel Wired	LED	110-220 V	TPU	2 m
U1202-26	VAS 22-D669-2M	2 Conductors + 1 Ground, Ground Contacts Parallel Wired	LED/MOV	24-48 V	TPU	2 m
U7102-1	VAS 22-E669-2M	2 Conductors + 1 Ground, Ground Contacts Parallel Wired	LED/MOV	110-220 V	TPU	2 m
U99-14259	VAS 22-F669-2M	2 Conductors + 1 Ground, Ground Contacts Parallel Wired	LED/DIODE	24-48 VDC	TPU	2 m
U1200-01	VAS 22-A669-5M	2 Conductors + 1 Ground, Ground Contacts Parallel Wired	Straight	0-220 V	TPU	5 m
U1203-2	VAS 22-C669-5M	2 Conductors + 1 Ground, Ground Contacts Parallel Wired	LED	110-220 V	TPU	5 m
U1202-05	VAS 22-D669-5M	2 Conductors + 1 Ground, Ground Contacts Parallel Wired	LED/MOV	24-48 V	TPU	5 m
U7103	VAS 22-E669-5M	2 Conductors + 1 Ground, Ground Contacts Parallel Wired	LED/MOV	110-220 V	TPU	5 m
U7106-05	VAS 22-F669-5M	2 Conductors + 1 Ground, Ground Contacts Parallel Wired	LED/DIODE	24-48 VDC	TPU	5 m

Connectivity

Valve Plugs Type A - 18 mm (continued)

Item ID	Product Description	Pin Count	Wiring	Voltage	Cable Type	Cable Length
U99-14333	VAS 3-A580-2M	3 Conductors + Ground	Straight	0-220 V	PVC	2 m
U1204-71	VAS 3-A580-5M	3 Conductors + Ground	Straight	0-220 V	PVC	5 m

Valve Plugs Type I - 11 mm



Item ID	Product Description	Pin Count	Wiring	Voltage	Cable Type	Cable Length
U-62607	VIS 2-A653-5M	2 Conductors + 1 Ground	Straight	0-220 V	PVC	5 m
U-62629	VIS 2-B653-5M	2 Conductors + 1 Ground	LED	24-48 V	PVC	5 m
U-62657	VIS 2-D653-5M	2 Conductors + 1 Ground	LED/MOV	24-48 V	PVC	5 m
U-62670	VIS 2-E653-5M	2 Conductors + 1 Ground	LED/MOV	110-220 V	PVC	5 m
U-62690	VIS 2-F653-5M	2 Conductors + 1 Ground	LED/DIODE	24-48 VDC	PVC	5 m
U-62619	VIS 2-A669-5M	2 Conductors + 1 Ground	Straight	0-220 V	TPU	5 m
U-62636	VIS 2-B669-5M	2 Conductors + 1 Ground	LED	24-48 V	TPU	5 m
U-62663	VIS 2-D669-5M	2 Conductors + 1 Ground	LED/MOV	24-48 V	TPU	5 m
U-62678	VIS 2-E669-5M	2 Conductors + 1 Ground	LED/MOV	110-220 V	TPU	5 m
U-62696	VIS 2-F669-5M	2 Conductors + 1 Ground	LED/DIODE	24-48 VDC	TPU	5 m

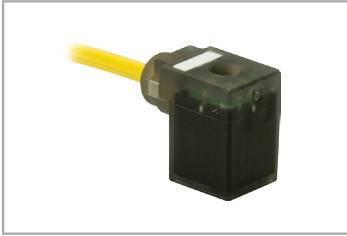
Valve Plugs Type B - 10 mm



Item ID	Product Description	Pin Count	Wiring	Voltage	Cable Type	Cable Length
U-62542	VBS 2-A653-5M	2 Conductors + 1 Ground	Straight	0-220 V	PVC	5 m
U-62549	VBS 2-B653-5M	2 Conductors + 1 Ground	LED	24-48 V	PVC	5 m
U-62561	VBS 2-D653-5M	2 Conductors + 1 Ground	LED/MOV	24-48 V	PVC	5 m
U-62572	VBS 2-F653-5M	2 Conductors + 1 Ground	LED/DIODE	24-48 VDC	PVC	5 m
U-62544	VBS 2-A669-5M	2 Conductors + 1 Ground	Straight	0-220 V	TPU	5 m
U-62552	VBS 2-B669-5M	2 Conductors + 1 Ground	LED	24-48 V	TPU	5 m
U-62564	VBS 2-D669-5M	2 Conductors + 1 Ground	LED/MOV	24-48 V	TPU	5 m
U99-14905	VBS 2-F669-5M	2 Conductors + 1 Ground	LED/DIODE	24-48 VDC	TPU	5 m

Connectivity

Valve Plugs Type C - 9.4 mm



Item ID	Product Description	Pin Count	Wiring	Voltage	Cable Type	Cable Length
U-63730	TC9S 2-A653-5M	2 Conductors + 1 Ground	Straight	0-220 V	PVC	5 m
U-63733	TC9S 2-L653-5M	2 Conductors + 1 Ground	LED	24 V	PVC	5 m
U-63737	TC9S 2-P653-5M	2 Conductors + 1 Ground	LED/DIODE	24 V	PVC	5 m
U-63702	TC9S 2-A669-5M	2 Conductors + 1 Ground	Straight	0-220 V	TPU	5 m
U-63707	TC9S 2-L669-5M	2 Conductors + 1 Ground	LED	24 V	TPU	5 m
U-63712	TC9S 2-P669-5M	2 Conductors + 1 Ground	LED/DIODE	24 V	TPU	5 m

Valve Plugs Type C - 8 mm



Item ID	Product Description	Pin Count	Wiring	Voltage	Cable Type	Cable Length
U-63715	TC8S 2-A653-5M	2 Conductors + 1 Ground	Straight	0-220 V	PVC	5 m
U-63719	TC8S 2-L653-5M	2 Conductors + 1 Ground	LED	24 V	PVC	5 m
U-63724	TC8S 2-N653-5M	2 Conductors + 1 Ground	LED	110 V	PVC	5 m
U-63727	TC8S 2-P653-5M	2 Conductors + 1 Ground	LED/DIODE	24 V	PVC	5 m
U-63694	TC8S 2-A669-5M	2 Conductors + 1 Ground	Straight	0-220 V	TPU	5 m
U-63696	TC8S 2-L669-5M	2 Conductors + 1 Ground	LED	24 V	TPU	5 m
U-63697	TC8S 2-N669-5M	2 Conductors + 1 Ground	LED	110 V	TPU	5 m
U-63700	TC8S 2-P669-5M	2 Conductors + 1 Ground	LED/DIODE	24 V	TPU	5 m

Valve Plugs Extension Cordsets - Valve to M12



Item ID	Product Description	Termination Type	Pin Count	Wiring	Voltage	Cable Type	Cable Length
U-62835	VIS 2-A653-2M-RS 5.3T	Type I/M12	2 Conductors + 1 Ground	Straight	0-220 V	PVC	2 m
U-62928	VIS 2-F653-2M-RS 5.3T	Type I/M12	2 Conductors + 1 Ground	LED/DIODE	24-48 VDC	PVC	2 m
U1200-32	VAS 22-A653-2M-RS 5.3T	Type A/M12	2 Conductors + 1 Ground, Ground Contacts Parallel Wired	Straight	0-220 V	PVC	2 m
U99-14240	VAS 22-F653-2M-RS 5.3T	Type A/M12	2 Conductors + 1 Ground, Ground Contacts Parallel Wired	LED/DIODE	24-48 VDC	PVC	2 m

Connectivity

A-Size Powerfast Single Ended Cordsets



3 or 4-pin
 7/8-16 UN threaded connectors
 Black TPE or PVC cable jacket
 Nickel plated brass coupling nut
 TC-ER cable approval
 UL 2237 approved
 Rated for 15 A, 600 V
 NEMA 1, 3, 4, 6P and IEC IP67

Item ID	Product Description	Pin Count	Gender	Plug Body	Cable Type	Conductor Size	Coupling Nut Material	Cable Length
U-30532	RKM 34-2M/S4000	4-pin	Female	Straight	TPE TC-ER	14 AWG	Nickel Plated Brass	2 m
U-32563	RKM 34-5M/S4000	3-pin	Female	Straight	TPE TC-ER	14 AWG	Nickel Plated Brass	5 m
U-32566	RKM 34-10M/S4000	3-pin	Female	Straight	TPE TC-ER	14 AWG	Nickel Plated Brass	10 m
U-30531	RSM 34-2M/S4000	3-pin	Male	Straight	TPE TC-ER	14 AWG	Nickel Plated Brass	2 m
U-32557	RSM 34-5M/S4000	3-pin	Male	Straight	TPE TC-ER	14 AWG	Nickel Plated Brass	5 m
U-32560	RSM 34-10M/S4000	3-pin	Male	Straight	TPE TC-ER	14 AWG	Nickel Plated Brass	10 m
U2-15307	RKM 44-2M/S4000	4-pin	Female	Straight	PVC TC-ER	14 AWG	Nickel Plated Brass	2 m
U-32575	RKM 44-5M/S4000	4-pin	Female	Straight	PVC TC-ER	14 AWG	Nickel Plated Brass	5 m
U-32578	RKM 44-10M/S4000	4-pin	Female	Straight	PVC TC-ER	14 AWG	Nickel Plated Brass	10 m
U2-15306	RSM 44-2M/S4000	4-pin	Male	Straight	PVC TC-ER	14 AWG	Nickel Plated Brass	2 m
U-32569	RSM 44-5M/S4000	4-pin	Male	Straight	PVC TC-ER	14 AWG	Nickel Plated Brass	5 m
U-32572	RSM 44-10M/S4000	4-pin	Male	Straight	PVC TC-ER	14 AWG	Nickel Plated Brass	10 m

A-Size Powerfast Extension Cordsets

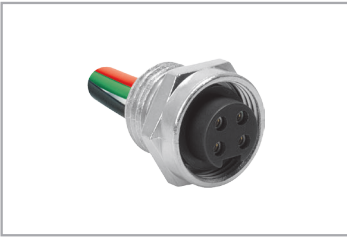


3 or 4-pin
 7/8-16 UN threaded connectors
 Black TPE or PVC cable jacket
 Nickel plated brass coupling nut
 TC-ER cable approval
 UL 2237 approved
 Rated for 15 A, 600 V
 NEMA 1, 3, 4, 6P and IEC IP67

Item ID	Product Description	Pin Count	Gender	Plug Body	Cable Type	Conductor Size	Coupling Nut Material	Cable Length
U-30828	RSM RKM 34-2M/S4000	3-pin	Male/Female	Straight	TPE TC-ER	14 AWG	Nickel Plated Brass	2 m
U-34438	RSM RKM 34-5M/S4000	3-pin	Male/Female	Straight	TPE TC-ER	14 AWG	Nickel Plated Brass	5 m
U-36821	RSM RKM 34-10M/S4000	3-pin	Male/Female	Straight	TPE TC-ER	14 AWG	Nickel Plated Brass	10 m
U2-15308	RSM RKM 44-2M/S4000	4-pin	Male/Female	Straight	PVC TC-ER	14 AWG	Nickel Plated Brass	2 m
U-33709	RSM RKM 44-5M/S4000	4-pin	Male/Female	Straight	PVC TC-ER	14 AWG	Nickel Plated Brass	5 m
U-33708	RSM RKM 44-10M/S4000	4-pin	Male/Female	Straight	PVC TC-ER	14 AWG	Nickel Plated Brass	10 m

Connectivity

A-Size Powerfast Receptacles



3 or 4-pin
 7/8-16 UN threaded connectors
 Nickel plated brass housing material
 Front mount
 UL 2237 approved
 Rated for 15 A, 600 V
 NEMA 1, 3, 4, 6P and IEC IP67

Item ID	Product Description	Pin Count	Gender	Conductor Size	Mounting Style	Housing Material	Wire Length
U2-15010	RKF 34-0.5M/NPT	3-pin	Female	14 AWG	1/2" NPT	Nickel Plated Brass	0.5 m
U-32478	RKF 34-2M/NPT	3-pin	Female	14 AWG	1/2" NPT	Nickel Plated Brass	2 m
U2-15013	RSF 34-0.5M/NPT	3-pin	Male	14 AWG	1/2" NPT	Nickel Plated Brass	0.5 m
U-32476	RSF 34-2M/NPT	3-pin	Male	14 AWG	1/2" NPT	Nickel Plated Brass	2 m
U2-15011	RKF 44-0.5M/NPT	4-pin	Female	14 AWG	1/2" NPT	Nickel Plated Brass	0.5 m
U-32481	RKF 44-2M/NPT	4-pin	Female	14 AWG	1/2" NPT	Nickel Plated Brass	2 m
U2-15014	RSF 44-0.5M/NPT	4-pin	Male	14 AWG	1/2" NPT	Nickel Plated Brass	0.5 m
U-32474	RSF 44-2M/NPT	4-pin	Male	14 AWG	1/2" NPT	Nickel Plated Brass	2 m

D-Size Powerfast Single Ended Cordsets



3 or 4-pin
 1 3/8-16 UN threaded connectors
 Black PVC cable jacket
 Anodized aluminum coupling nut
 TC-ER cable approval
 UL 2237 approved
 Rated for up to 30 A, 600 V
 NEMA 1, 3, 4, 6P and IEC IP67, IP68, IP69K

Item ID	Product Description	Pin Count	Gender	Plug Body	Cable Type	Conductor Size	Coupling Nut Material	Cable Length
U2-15353	GKDA 30-2M/S4000	3-pin	Female	Straight	PVC TC-ER	10 AWG	Anodized Aluminum	2 m
U-37052	GKDA 30-5M/S4000	3-pin	Female	Straight	PVC TC-ER	10 AWG	Anodized Aluminum	5 m
U-37053	GKDA 30-10M/S4000	3-pin	Female	Straight	PVC TC-ER	10 AWG	Anodized Aluminum	10 m
U2-15352	GSDA 30-2M/S4000	3-pin	Male	Straight	PVC TC-ER	10 AWG	Anodized Aluminum	2 m
U-37055	GSDA 30-5M/S4000	3-pin	Male	Straight	PVC TC-ER	10 AWG	Anodized Aluminum	5 m
U-37056	GSDA 30-10M/S4000	3-pin	Male	Straight	PVC TC-ER	10 AWG	Anodized Aluminum	10 m
U2-15368	GKDA 40-2M/S4000	4-pin	Female	Straight	PVC TC-ER	10 AWG	Anodized Aluminum	2 m
U-37054	GKDA 40-5M/S4000	4-pin	Female	Straight	PVC TC-ER	10 AWG	Anodized Aluminum	5 m
U-35535	GKDA 40-10M/S4000	4-pin	Female	Straight	PVC TC-ER	10 AWG	Anodized Aluminum	10 m
U2-15367	GSDA 40-2M/S4000	4-pin	Male	Straight	PVC TC-ER	10 AWG	Anodized Aluminum	2 m
U-37057	GSDA 40-5M/S4000	4-pin	Male	Straight	PVC TC-ER	10 AWG	Anodized Aluminum	5 m
U-35540	GSDA 40-10M/S4000	4-pin	Male	Straight	PVC TC-ER	10 AWG	Anodized Aluminum	10 m

Connectivity

D-Size Powerfast Extension Cordsets



3 or 4-pin
 1 3/8-16 UN threaded connectors
 Black PVC cable jacket
 Anodized aluminum coupling nut
 TC-ER cable approval
 UL 2237 approved
 Rated for up to 30 A, 600 V
 NEMA 1, 3, 4, 6P and IEC IP67, IP68, IP69K

Item ID	Product Description	Pin Count	Gender	Plug Body	Cable Type	Conductor Size	Coupling Nut Material	Cable Length
U2-15356	GSDA GKDA 30-2M/S4000	3-pin	Male/Female	Straight	PVC TC-ER	10 AWG	Anodized Aluminum	2 m
U-33207	GSDA GKDA 30-5M/S4000	3-pin	Male/Female	Straight	PVC TC-ER	10 AWG	Anodized Aluminum	5 m
U-34434	GSDA GKDA 30-10M/S4000	3-pin	Male/Female	Straight	PVC TC-ER	10 AWG	Anodized Aluminum	10 m
U2-15371	GSDA GKDA 40-2M/S4000	4-pin	Male/Female	Straight	PVC TC-ER	10 AWG	Anodized Aluminum	2 m
U-37058	GSDA GKDA 40-5M/S4000	4-pin	Male/Female	Straight	PVC TC-ER	10 AWG	Anodized Aluminum	5 m
U-35500	GSDA GKDA 40-10M/S4000	4-pin	Male/Female	Straight	PVC TC-ER	10 AWG	Anodized Aluminum	10 m

D-Size Powerfast Receptacles



3 or 4-pin
 1 3/8-16 UN threaded connectors
 Anodized aluminum housing material
 Front mount
 UL 2237 approved
 Rated for up to 30 A, 600 V
 NEMA 1, 3, 4, 6P and IEC IP67, IP68, IP69K

Item ID	Product Description	Pin Count	Gender	Conductor Size	Mounting Style	Housing Material	Wire Length
U2-15016	GK DFA 30-0.5M/14.5/NPT	3-pin	Female	10 AWG	1/2" NPT	Anodized Aluminum	0.5 m
U2-15028	GK DFA 30-0.5M/14.75/NPT	3-pin	Female	10 AWG	3/4" NPT	Anodized Aluminum	0.5 m
U-32749	GK DFA 30-2M/14.5/NPT	3-pin	Female	10 AWG	1/2" NPT	Anodized Aluminum	2 m
U-32736	GK DFA 30-2M/14.75/NPT	3-pin	Female	10 AWG	3/4" NPT	Anodized Aluminum	2 m
U2-15015	GSDFA 30-0.5M/14.5/NPT	3-pin	Male	10 AWG	1/2" NPT	Anodized Aluminum	0.5 m
U2-15027	GSDFA 30-0.5M/14.75/NPT	3-pin	Male	10 AWG	3/4" NPT	Anodized Aluminum	0.5 m
U-37059	GSDFA 30-2M/14.5/NPT	3-pin	Male	10 AWG	1/2" NPT	Anodized Aluminum	2 m
U-51604	GSDFA 30-2M/14.75/NPT	3-pin	Male	10 AWG	3/4" NPT	Anodized Aluminum	2 m
U2-15018	GK DFA 40-0.5M/14.5/NPT	4-pin	Female	10 AWG	1/2" NPT	Anodized Aluminum	0.5 m
U2-15030	GK DFA 40-0.5M/14.75/NPT	4-pin	Female	10 AWG	3/4" NPT	Anodized Aluminum	0.5 m
U-35613	GK DFA 40-2M/14.5/NPT	4-pin	Female	10 AWG	1/2" NPT	Anodized Aluminum	2 m
U-37062	GK DFA 40-2M/14.75/NPT	4-pin	Female	10 AWG	3/4" NPT	Anodized Aluminum	2 m
U2-15017	GSDFA 40-0.5M/14.5/NPT	4-pin	Male	10 AWG	1/2" NPT	Anodized Aluminum	0.5 m
U2-15029	GSDFA 40-0.5M/14.75/NPT	4-pin	Male	10 AWG	3/4" NPT	Anodized Aluminum	0.5 m
U-37060	GSDFA 40-2M/14.5/NPT	4-pin	Male	10 AWG	1/2" NPT	Anodized Aluminum	2 m
U-37061	GSDFA 40-2M/14.75/NPT	4-pin	Male	10 AWG	3/4" NPT	Anodized Aluminum	2 m

Connectivity

D-Size Powerfast Tees



3 or 4-pin
 Standard tees and reducer tees
 1 3/8-16 UN & 7/8-16 UN threaded connectors
 UL 2237 approved
 Rated for 25-30 A (trunk) & 15-30 A (drop), 600 V
 Up to NEMA 1, 3, 4, 6P and IEC IP67, IP68, IP69K

Item ID	Product Description	Pin Count	Termination Type	Coupling Nut Material
U2-15535	GSDA/GKDA/RKM 34	3-pin	D-Size Power with A-Size Power Drop	Anodized Aluminum (Trunk)/ Nickel Plated Brass (Drop)
U2-15108	GSDA/2GKDA 30	3-pin	D-Size Power	Anodized Aluminum
U2-15537	GSDA/GKDA/RKM 44	4-pin	D-Size Power with A-Size Power Drop	Anodized Aluminum (Trunk)/ Nickel Plated Brass (Drop)
U2-15106	GSDA/2GKDA 40	4-pin	D-Size Power	Anodized Aluminum

D-Size Powerfast Field Wireable



3 or 4-pin
 Screw terminal termination style 8-14 AWG
 9-26 mm cable diameter range
 Rated for up to 30 A, 600 V
 NEMA 6P and IEC IP67

Item ID	Product Description	Pin Count	Gender	Plug Body	Coupling Nut Material
U2-16369	GKDA 30-0	3-pin	Female	Straight	Anodized Aluminum
U2-16365	GSDA 30-0	3-pin	Male	Straight	Anodized Aluminum
U2-16371	GKDA 40-0	4-pin	Female	Straight	Anodized Aluminum
U2-16367	GSDA 40-0	4-pin	Male	Straight	Anodized Aluminum



Fieldbus Technology

Expand your communication capabilities while consolidating your wiring using Turck's fieldbus technology. Our in-depth understanding of industrial networking products – along with a broad product offering – positions Turck as a leader within the industry. Products range from junction boxes and Ethernet switches to distributed I/O and RFID – compatible with most major network protocols – including EtherNet/IP™, EtherCAT®, Modbus® TCP, PROFINET®, AS-interface®, CANopen, DeviceNet™, PROFIBUS®-DP, PROFIBUS®-PA and FOUNDATION™ fieldbus.

Our distributed I/O enables you to put control right where you want it, either on the machine or in a panel.

Turck's In-Stock Fieldbus Technology offering includes:

- Block I/O (In-Cabinet)
- Block I/O (On-Machine)
- Modular I/O (BL67)
- Modular I/O (BL20)
- Ethernet Switches
- Power Supplies

Fieldbus Technology

Block I/O: In Cabinet



Item ID	Product Description	Number of Inputs	Number of Outputs	Signal Type/Function	Operating Voltage	Operating Temp.
F6931089	FEN20-16DXP	16	16	Discrete (PNP)	12-30 VDC	-40 °C to +70 °C
F6931090	FEN20-4DIP-4DXP	8	4	Discrete (PNP)	12-30 VDC	-40 °C to +70 °C

Block I/O: On Machine



Item ID	Product Description	# of Inputs	# of Outputs	Signal Type/Function	Operating Voltage	Operating Temp.
M6814021	TBEN-S1-4DIP-4DOP	4	4	Discrete (PNP)	18-30 VDC	-40 °C to +70 °C
M6814020	TBEN-S1-8DIP	8	-	Discrete (PNP)	18-30 VDC	-40 °C to +70 °C
M6814022	TBEN-S1-8DOP	-	8	Discrete (PNP)	18-30 VDC	-40 °C to +70 °C
M6814023	TBEN-S1-8DXP	8	8	Discrete (PNP)	18-30 VDC	-40 °C to +70 °C
M6814006	TBEN-L1-8DIP-8DOP	8	8	Discrete (PNP)	18-30 VDC	-40 °C to +70 °C
M6814010	TBEN-L4-8DIP-8DOP	8	8	Discrete (PNP)	18-30 VDC	-40 °C to +70 °C
M6814005	TBEN-L1-16DIP	16	-	Discrete (PNP)	18-30 VDC	-40 °C to +70 °C
M6814009	TBEN-L4-16DIP	16	-	Discrete (PNP)	18-30 VDC	-40 °C to +70 °C
M6814007	TBEN-L1-16DOP	-	16	Discrete (PNP)	18-30 VDC	-40 °C to +70 °C
M6814011	TBEN-L4-16DOP	-	16	Discrete (PNP)	18-30 VDC	-40 °C to +70 °C
M6814008	TBEN-L1-16DXP	16	16	Discrete (PNP)	18-30 VDC	-40 °C to +70 °C
M6814012	TBEN-L4-16DXP	16	16	Discrete (PNP)	18-30 VDC	-40 °C to +70 °C
M6814025	TBEN-S2-4AI	4	-	Configurable Voltage, Current, RTD or Thermocouple	18-30 VDC	-40 °C to +70 °C
M6814028	TBEN-S2-4AO	-	4	Current (0/4 to 20 mA) and Voltage (-10/0 to +10 VDC)	18-30 VDC	-40 °C to +70 °C
M6814024	TBEN-S2-4IOL	-	-	4 IO-Link channels	18-30 VDC	-40 °C to +70 °C

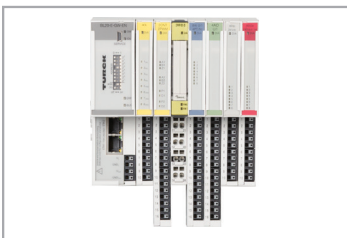
Fieldbus Technology

Modular I/O: BL67 Series



Item ID	Product Description	Type	# of Inputs	# of Outputs	Signal Type/Function	Base Compatibility	Operating Temp.
M6827214	BL67-GW-EN	On Machine	-	-	Ethernet Gateway (Modbus TCP/IP, EtherNet/IP, PROFINET)	-	-40 °C to +70 °C
M6827170	BL67-8DI-P	On Machine	8	-	Discrete (PNP)	BL67-B-4M12 or BL67-B-8M8	-40 °C to +70 °C
M6827172	BL67-8DO-0.5A-P	On Machine	-	8	Discrete (0.5 A/output)	BL67-B-4M12 or BL67-B-8M8-	-40 °C to +70 °C
M6827310	BL67-8XSG-P	On Machine	8	8	Per point configurable as discrete input/output	BL67-B-4M12 or BL67-B-8M8-	-40 °C to +70 °C
M6827222	BL67-4AI-V/I	On Machine	4	-	Current (0/4 to 20 mA) and Voltage (-10/0 to +10 VDC)	BL67-B-4M12-	-40 °C to +70 °C
M6827305	BL67-2RFID-S	On Machine	-	-	2 RFID channels (simple interface)	BL67-B-2M12-	-40 °C to +70 °C
M6827386	BL67-4IOL	On Machine	-	-	4 IO-Link channels	BL67-B-4M12	-40 °C to +70 °C
M6827186	BL67-B-2M12	On Machine	-	-	Base Module: 2 connectors (5-pin M12x1)	-	-40 °C to +70 °C
M6827187	BL67-B-4M12	On Machine	-	-	Base Module: 4 connectors (5-pin M12x1)	-	-40 °C to +70 °C
M6827188	BL67-B-8M8	On Machine	-	-	Base Module: 8 connectors (3-pin M8x1)	-	-40 °C to +70 °C

Modular I/O: BL20 Series



Item ID	Product Description	Type	# of Inputs	# of Outputs	Signal Type/Function	Operating Temp.
M6827329	BL20-E-GW-EN	In Cabinet	-	-	Ethernet Gateway (Modbus TCP/IP, EtherNet/IP, PROFINET)	0 °C to +55 °C
M6827227	BL20-E-8DI-24VDC-P	In Cabinet	8	-	Discrete (PNP)	0 °C to +55 °C
M6827231	BL20-E-16DI-24VDC-P	In Cabinet	16	-	Discrete (PNP)	0 °C to +55 °C
M6827226	BL20-E-8DO-24VDC-0.5A-P	In Cabinet	-	8	Discrete (0.5 A/output)	0 °C to +55 °C
M6827230	BL20-E-16DO-24VDC-0.5A-P	In Cabinet	-	16	Discrete (0.5 A/output)	0 °C to +55 °C
M6827325	BL20-E-8AI-U/I-4PT/NI	In Cabinet	8	-	0/4 to 20 mA, -10/0 to +10 VDC, RTD (uses 2 analog inputs)	0 °C to +55 °C
M6827367	BL20-E-4AI-TC	In Cabinet	4	-	Thermocouples (Type B,C,E,G,J,K,N,R,S,T)	0 °C to +55 °C
M6827328	BL20-E-4AO-U/I	In Cabinet	-	4	Current (0/4 to 20 mA) and Voltage (-10/0 to +10 VDC)	0 °C to +55 °C
M6827341	BL20-E-2CNT-2PWM	In Cabinet	2	2	Counter inputs; PWM outputs	0 °C to +55 °C
M6827385	BL20-E-4IOL	In Cabinet	-	-	4 IO-Link channels	0 °C to +55 °C

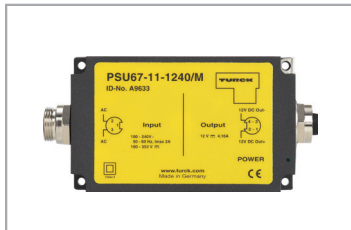
Fieldbus Technology

Ethernet Switch



Item ID	Product Description	Type	Operating Temp.	Number of Ethernet Ports	Power Connectivity	Managed vs Unmanaged	Connectivity Media
U3-10873	SE20-84XT-RJ422-FO	In Cabinet	-40 °C to +60 °C	4	Screw Terminal	Unmanaged	RJ45
U3-10852	SE20-84X-RJ522	In Cabinet	-40 °C to +60 °C	5	Screw Terminal	Unmanaged	RJ45
U3-10866	SE20-84XT-RJ822	In Cabinet	-40 °C to +60 °C	8	Screw Terminal	Unmanaged	RJ45
U3-10865	SE20-84MT-RJ822	In Cabinet	-40 °C to +60 °C	8	Screw Terminal	Managed	RJ45
U9450	SE-44X4-E524	On Machine	-40 °C to +75 °C	5	4-pin Mini	Unmanaged	Ethernet M12
U3-00041	SE-44X-E524	On Machine	-40 °C to +75 °C	5	5-pin Mini	Unmanaged	Ethernet M12
U9449	SE-44X4-E924	On Machine	-40 °C to +75 °C	9	4-pin Mini	Unmanaged	Ethernet M12
U3-00040	SE-44X-E924	On Machine	-40 °C to +75 °C	9	5-pin Mini	Unmanaged	Ethernet M12
U3-00775	SE-44M-E924	On Machine	-40 °C to +60 °C	9	5-pin Mini	Unmanaged	Ethernet M12

Power Supplies



Item ID	Product Description	Type	Operating Voltage	Power Output	Operating Temp.
M7545041	IM82-24-2.5	In Cabinet	85-264 VAC	24 VDC, 2.5 A	-25 °C to +70 °C
M7545042	IM82-24-5.0	In Cabinet	90-264 VAC	24 VDC, 5.0 A	-25 °C to +70 °C
M7545043	IM82-24-10	In Cabinet	90-264 VAC	24 VDC, 10 A	-25 °C to +70 °C
M7545044	IM82-24-20	In Cabinet	90-264 VAC	24 VDC, 20 A	-25 °C to +70 °C
M7545045	IM82-24-5,0-3P	In Cabinet	340-575 VAC	24 VDC, 5.0 A	-40 °C to +70 °C
M7545046	IM82-24-10-3P	In Cabinet	340-575 VAC	24 VDC, 10 A	-40 °C to +70 °C
A9633	PSU67-11-1240/M	On Machine	120-240 VAC	12 VDC, 4.0 A	-25 °C to +60 °C
M6884140	PSU67-11-2420/M	On Machine	90-264 VAC	24 VDC, 2.0 A	-25 °C to +60 °C
M6884141	PSU67-11-2440/M	On Machine	100-240 VAC	24 VDC, 4.0 A	-25 °C to +60 °C
M6884147	PSU67-11-2480/M	On Machine	90-264 VAC	24 VDC, 8.0 A	-25 °C to +60 °C
M6884148	PSU67-12-2480/M	On Machine	100-240 VAC	24 VDC, 8.0 A	-25 °C to +60 °C



Turck Inc. sells its products through Authorized Distributors. These distributors provide our customers with technical support, service and local stock. Turck distributors are located nationwide - including all major metropolitan marketing areas.

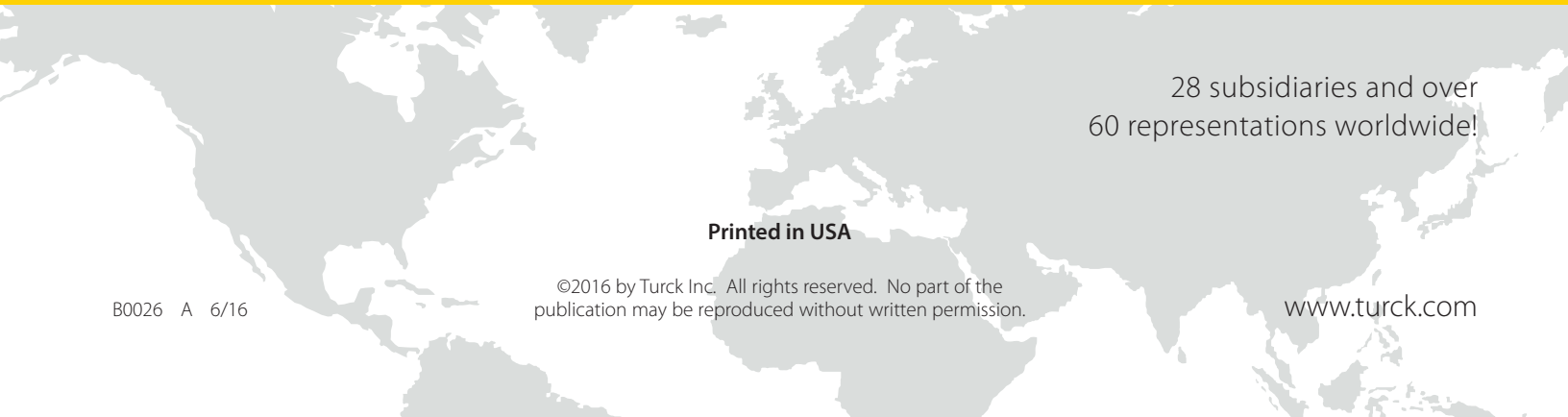
For Application Support or for the location of your nearest Turck distributor, call:

1-800-544-7769

Specifications in this manual are subject to change without notice. Turck also reserves the right to make modifications and makes no guarantee of the accuracy of the information contained herein.

Literature and Media questions or concerns?
Contact Marketing Services Turck USA: tusa.marketing@turck.com

TURCK



28 subsidiaries and over
60 representations worldwide!

Printed in USA

©2016 by Turck Inc. All rights reserved. No part of the
publication may be reproduced without written permission.

B0026 A 6/16

www.turck.com