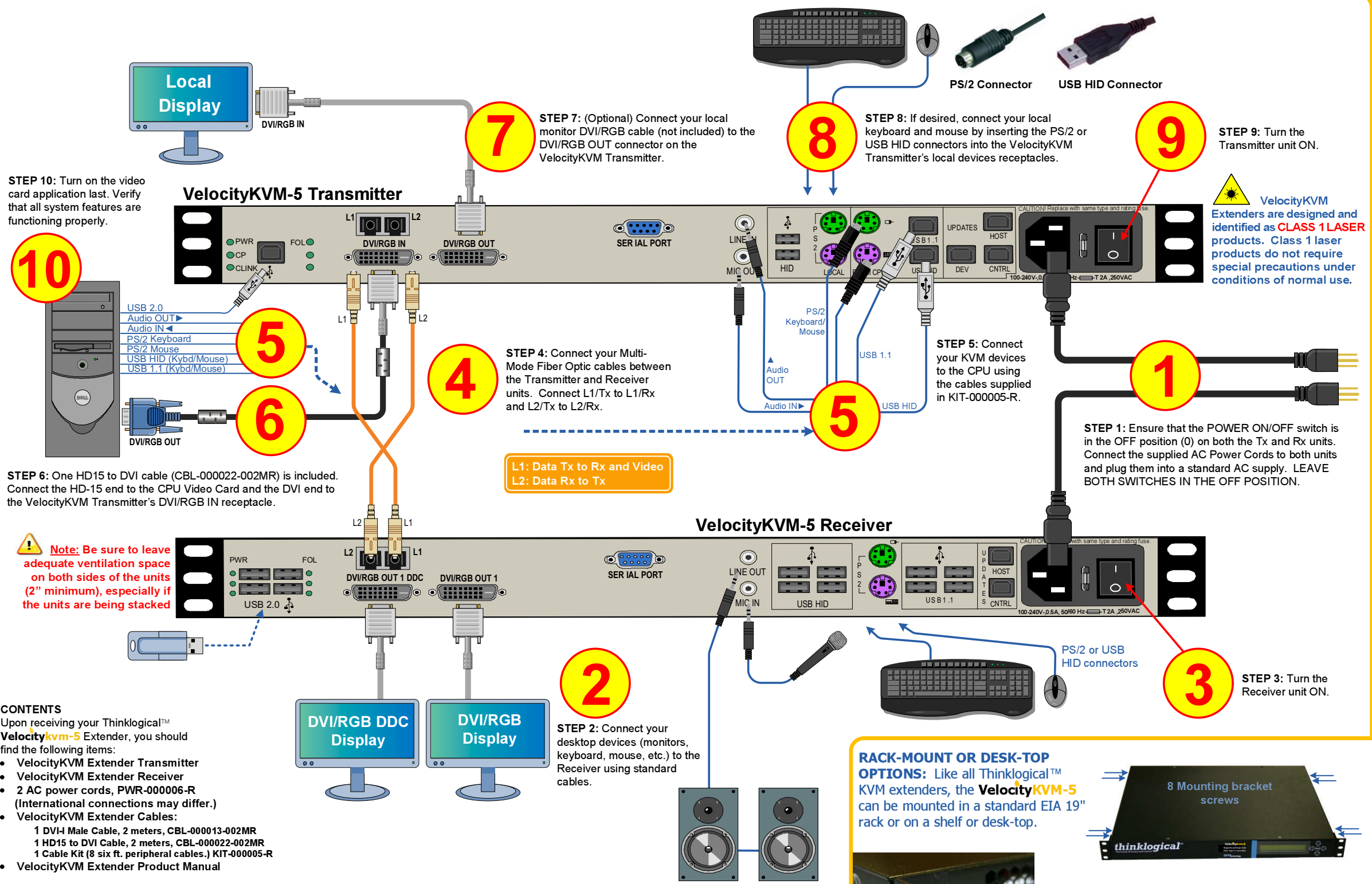


# Velocitykvm-5

## Multi-Mode Fiber Extension – RGB/DVI Display

### QUICK START GUIDE

Each Thinklogical™ **Velocitykvm-5** Multi-Mode Fiber Optic System consists of a transmitter unit and a receiver unit connected by two multi-mode fiber optic cables (or by one optional single-mode fiber). The transmitter unit connects to the computer with standard cables and the receiver unit provides connections to the user interface devices. The **Velocitykvm-5** supports PS/2, full duplex stereo audio, serial (RS-232), USB 1.0 (HID) device ports and USB 1.1. Available options include USB 2.0 (high speed up to 480Mbps).



**STEP 10:** Turn on the video card application last. Verify that all system features are functioning properly.

**10**

**STEP 6:** One HD15 to DVI cable (CBL-000022-002MR) is included. Connect the HD-15 end to the CPU Video Card and the DVI end to the VelocityKVM Transmitter's DVI/RGB IN receptacle.

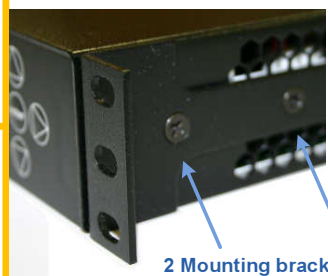
**Note:** Be sure to leave adequate ventilation space on both sides of the units (2" minimum), especially if the units are being stacked

- CONTENTS**  
Upon receiving your Thinklogical™ **Velocitykvm-5** Extender, you should find the following items:
- VelocityKVM Extender Transmitter
  - VelocityKVM Extender Receiver
  - 2 AC power cords, PWR-000006-R (International connections may differ.)
  - VelocityKVM Extender Cables:
    - 1 DVI-I Male Cable, 2 meters, CBL-000013-002MR
    - 1 HD15 to DVI Cable, 2 meters, CBL-000022-002MR
    - 1 Cable Kit (8 six ft. peripheral cables.) KIT-000005-R
  - VelocityKVM Extender Product Manual

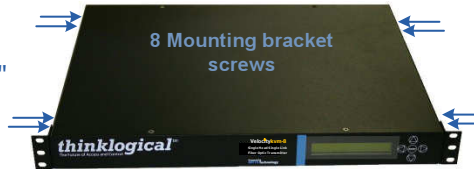
All physical connections to the product use industry-standard connectors.

VELOCITY-5\_Quick\_Start\_Rev\_B

**RACK-MOUNT OR DESK-TOP OPTIONS:** Like all Thinklogical™ KVM extenders, the **VelocityKVM-5** can be mounted in a standard EIA 19" rack or on a shelf or desk-top.



2 Mounting bracket screws in four places.



Each mounting bracket is secured by four screws and can be safely removed from the transmitter or receiver unit for desk-top mounting.

**thinklogical™**

PHONE: (800) 291-3211  
WEBSITE: www.thinklogical.com  
EMAIL: support@thinklogical.com

Visit us online at [www.thinklogical.com](http://www.thinklogical.com) for more product information, current updates and the complete line of Thinklogical™ products.

# Velocitykvm-35

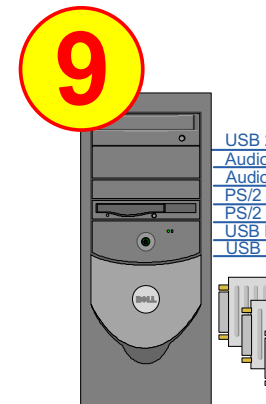
Multi-Mode Fiber Extension – Three DVI Displays

Each Thinklogical™ Velocitykvm-35 Multi-Mode Fiber Optic System consists of a transmitter unit and a receiver unit connected by four multi-mode fiber optic cables. The transmitter unit connects to the computer with standard cables and the receiver unit provides connections to the user interface devices. The Velocitykvm-35 supports PS/2, full duplex stereo audio, serial (RS-232), USB 1.0 (HID) device ports and USB 1.1. USB 2.0 (high speed up to 480Mbps) is optional.

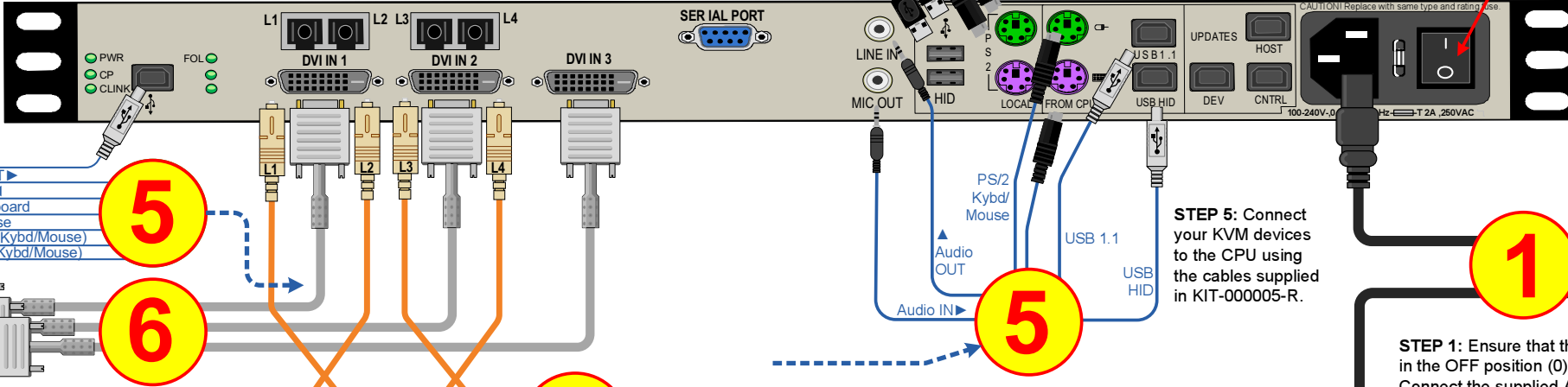
## QUICK START GUIDE

**Multi-Mode Fiber-Optic Cable Guide:**  
 L1: Data Tx to Rx and Video 1  
 L2: Data Rx to Tx  
 L3: Video 2  
 L4: Video 3

**STEP 9:** Turn on the Source (CPU) last. Verify that all system features are functioning properly.

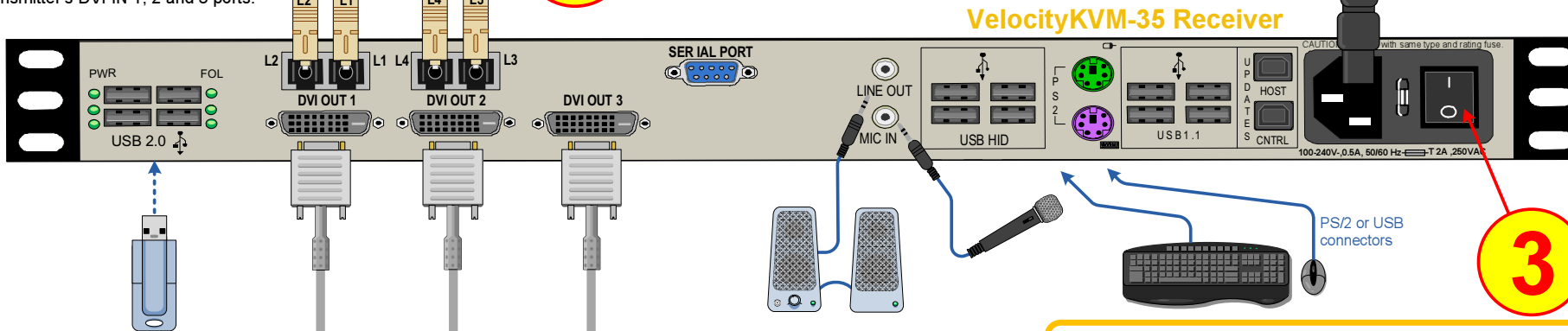


### VelocityKVM-35 Transmitter

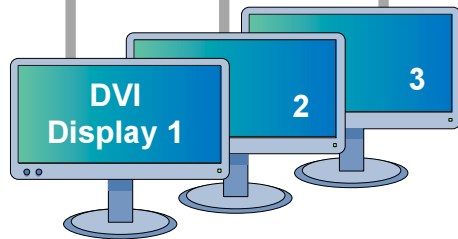


**STEP 6:** Three DVI-D cables (CBL-000009-002MR) are included. Connect one each to the CPU's DVI 1, 2 and 3 Video Cards and the other ends to the VelocityKVM Transmitter's DVI IN 1, 2 and 3 ports.

**Note:** Be sure to leave adequate ventilation space on both sides of the units (2" minimum), especially if the units are being stacked.



**STEP 2:** Connect your desktop devices (monitors, keyboard, mouse, etc.) to the Receiver using standard cables.



**STEP 7:** If desired, connect your local keyboard and mouse by inserting the PS/2 or USB HID connectors into the VelocityKVM Transmitter's local devices receptacles.

**STEP 8:** Turn the Transmitter unit ON (1).

**VelocityKVM Extenders are designed and identified as CLASS 1 LASER products. Class 1 laser products do not require special precautions under conditions of normal use.**

**STEP 5:** Connect your KVM devices to the CPU using the cables supplied in KIT-000005-R.

**STEP 1:** Ensure that the POWER ON/OFF switch is in the OFF position (0) on both the Tx and Rx units. Connect the supplied AC Power Cords to both units and plug them into a standard AC supply. LEAVE BOTH SWITCHES IN THE OFF POSITION.

**STEP 3:** Turn the Receiver unit ON (1).

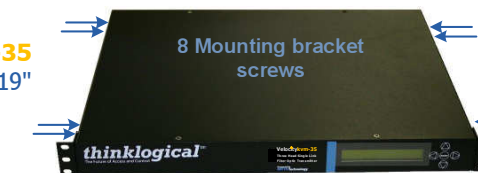
### CONTENTS

Upon receiving your Thinklogical™ Velocitykvm-35 Extender, you should find the following items:

- VelocityKVM Extender Transmitter
- VelocityKVM Extender Receiver
- 2 AC power cords, PWR-000006-R (International connections may differ.)
- VelocityKVM Extender Cables:
  - 3 DVI-D Male Cables, 2 meters, CBL-000009-002MR
  - 1 Cable Kit (8 six ft. peripheral cables.) KIT-000005-R
- VelocityKVM Extender Product Manual

All physical connections to the product use industry-standard connectors.

**RACK-MOUNT OR DESK-TOP OPTIONS:** Like all Thinklogical™ KVM extenders, the Velocitykvm-35 can be mounted in a standard EIA 19" rack or on a shelf or desk-top.



Each mounting bracket is secured by four screws and can be safely removed from the transmitter or receiver unit for desk-top mounting after power has been removed from the unit.

All screws should be reinstalled after the brackets have been removed.



2 Mounting bracket screws in four places.

**thinklogical™**

PHONE: (800) 291-3211  
 WEBSITE: www.thinklogical.com  
 EMAIL: support@thinklogical.com

Visit us online at [www.thinklogical.com](http://www.thinklogical.com) for more product information, current updates and the complete line of Thinklogical™ products.